

U-Pb and trace elements for Bootbhy Mylonite Monazite from

16BM3-1 Wallrock
16BM2B Transition close to SZ
16BM1-2 Mylonite @edge of SZ

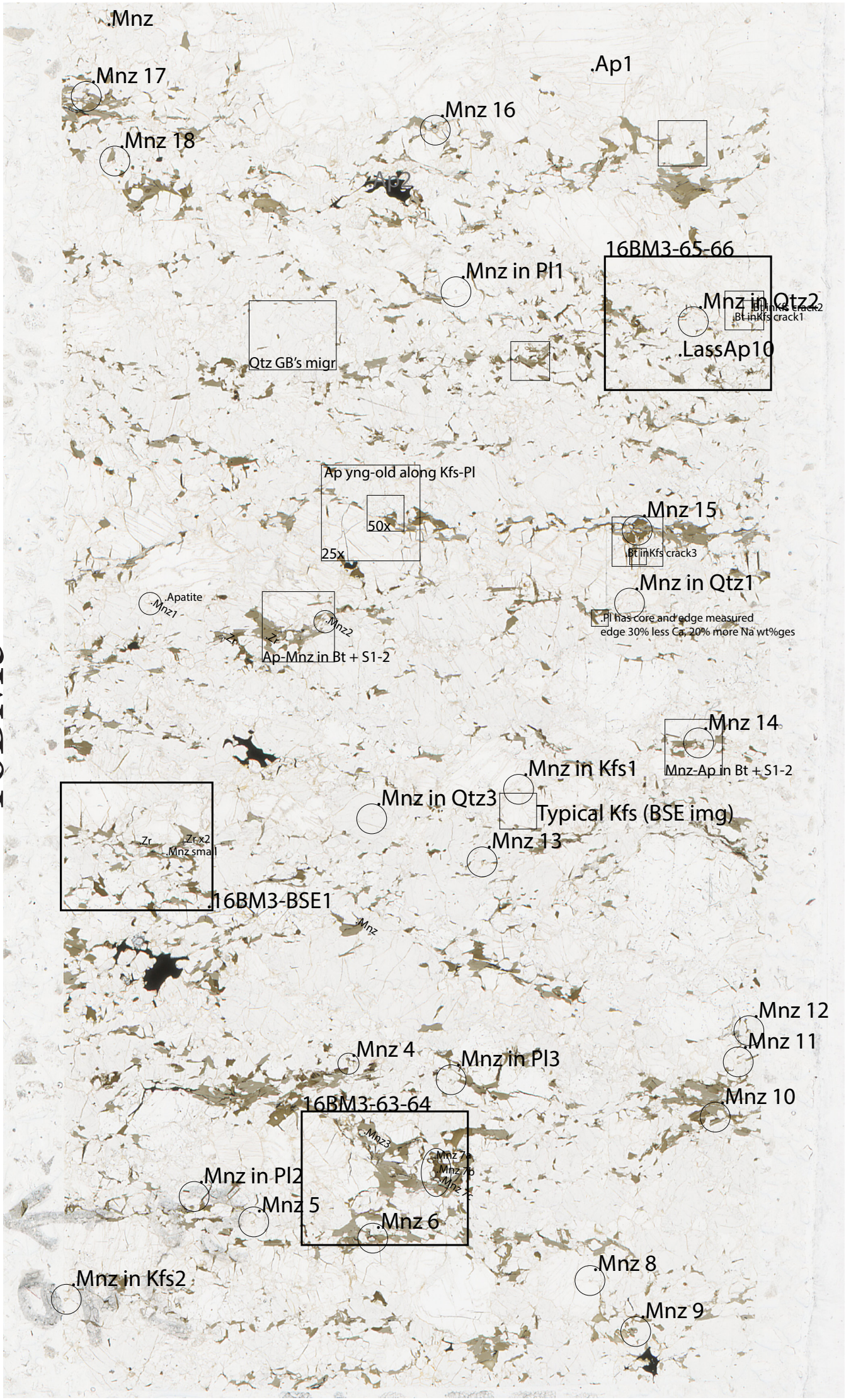
RESULTS:

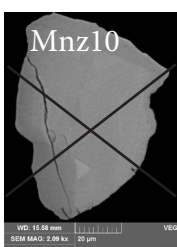
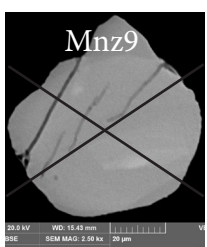
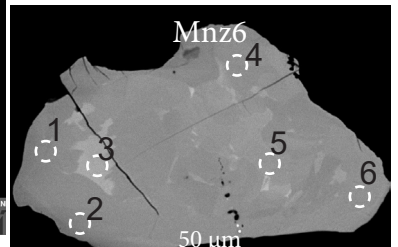
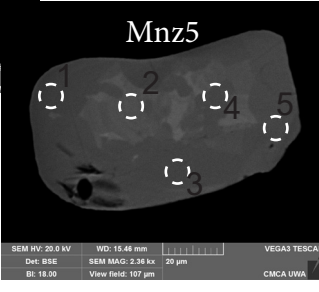
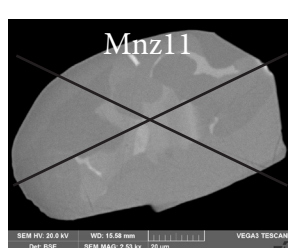
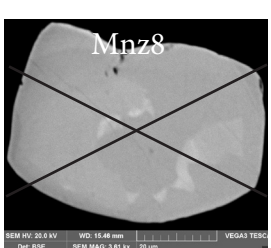
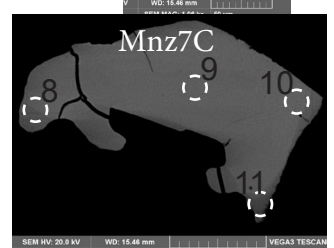
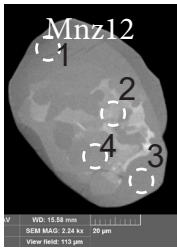
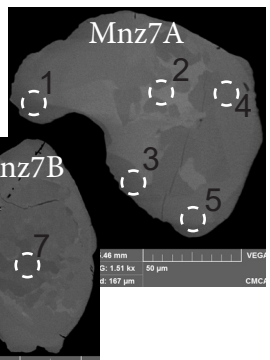
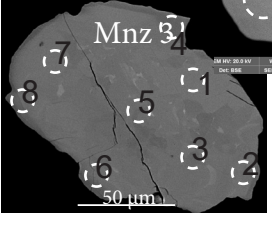
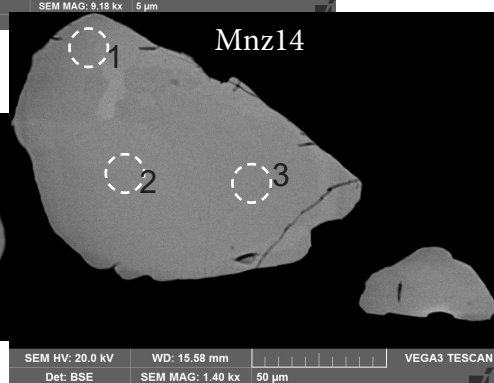
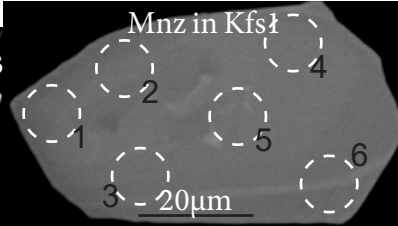
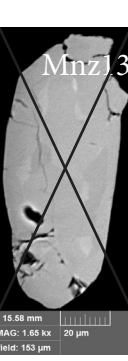
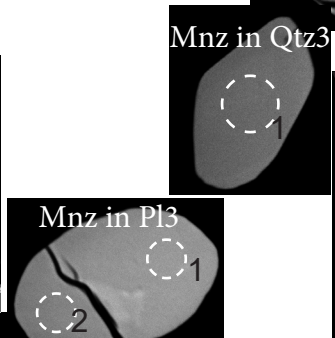
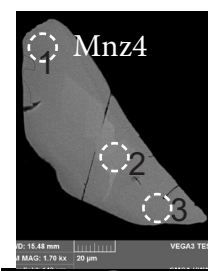
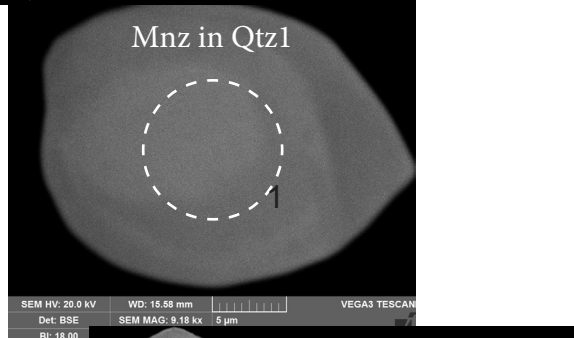
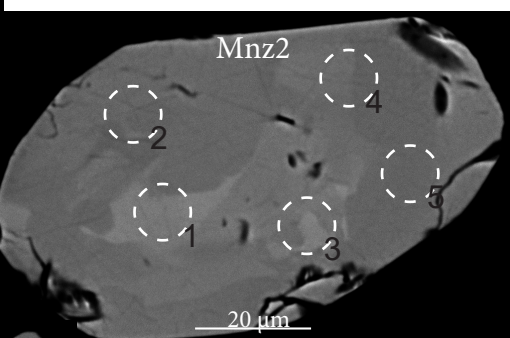
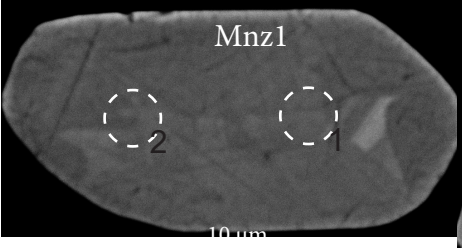
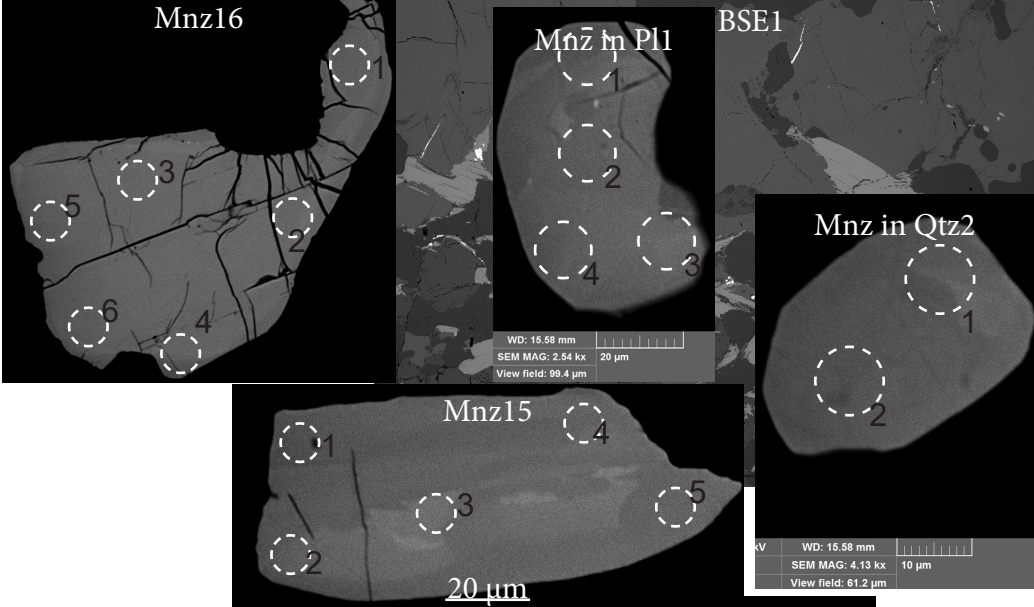
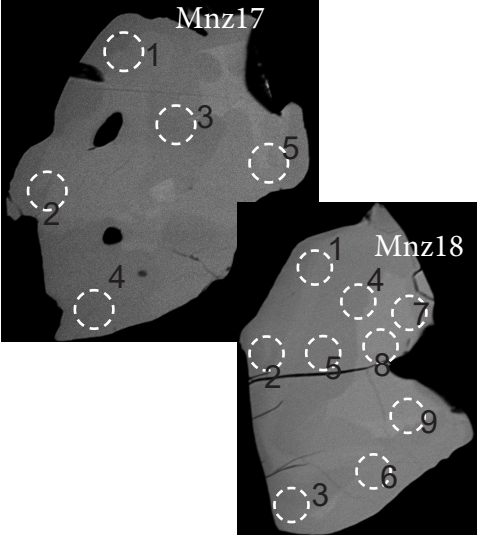
Ages: a propagated error of 1.5% based on reference material 44069 and secondary RM Stern is calculated.

Table 1; Analyses per sample.

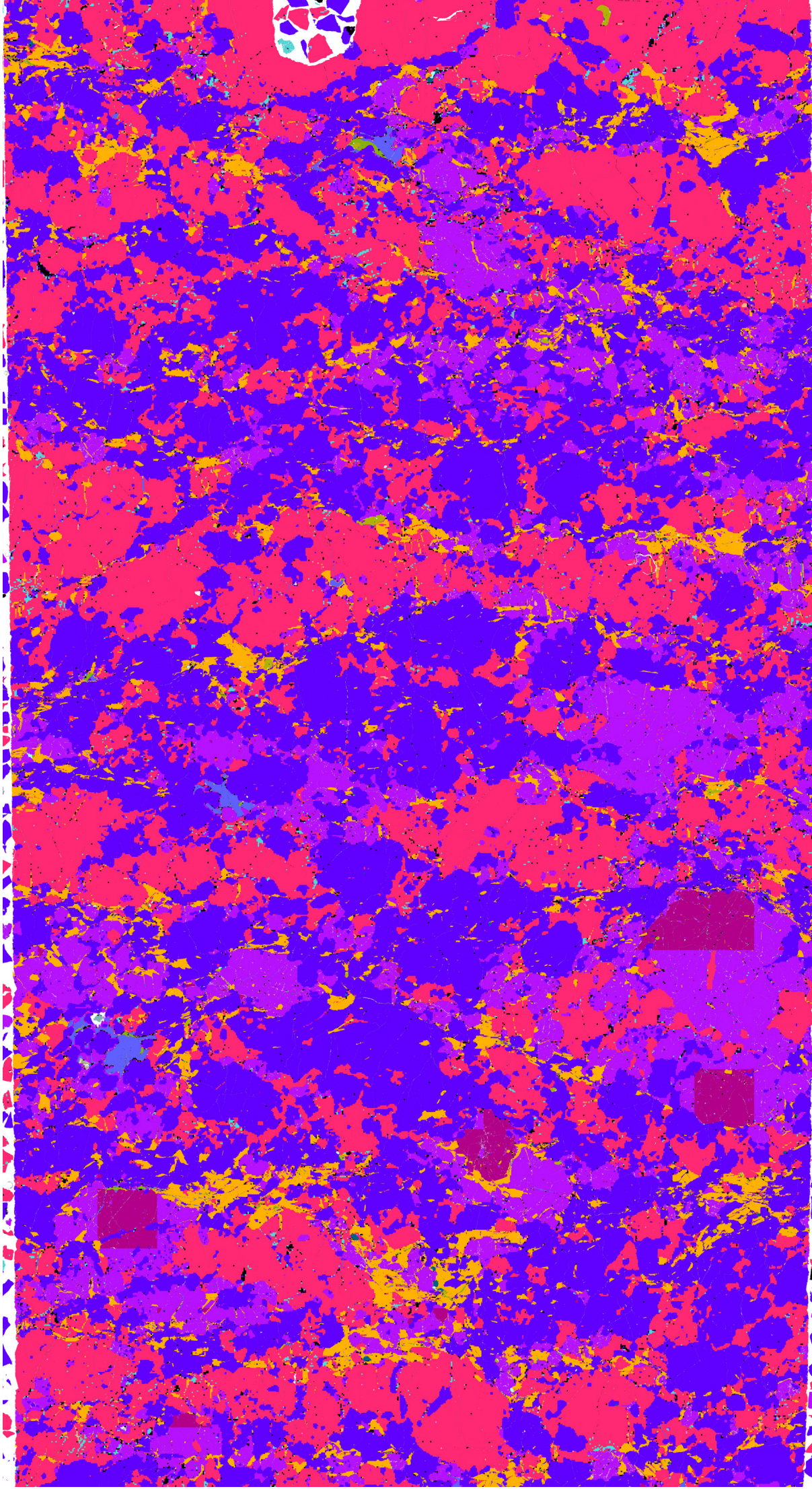
SAMPLE	AGE(s) in Ma	Th/U	Eu*	Ce*	LREE	HREE
Protomylonite BM3	1526-1773 ± 25-52	5-25	0.03-0.004	1.03-1.14	0.21-0.13	0.081-0.029
Mylonite BM2B	1526-1660 ± 25-50	5-34	0.034-0.008	1.06-1.17	0.19-0.13	0.069-0.017
Mylonite BM1-2	No ages	-	-	-	-	-

16BM3



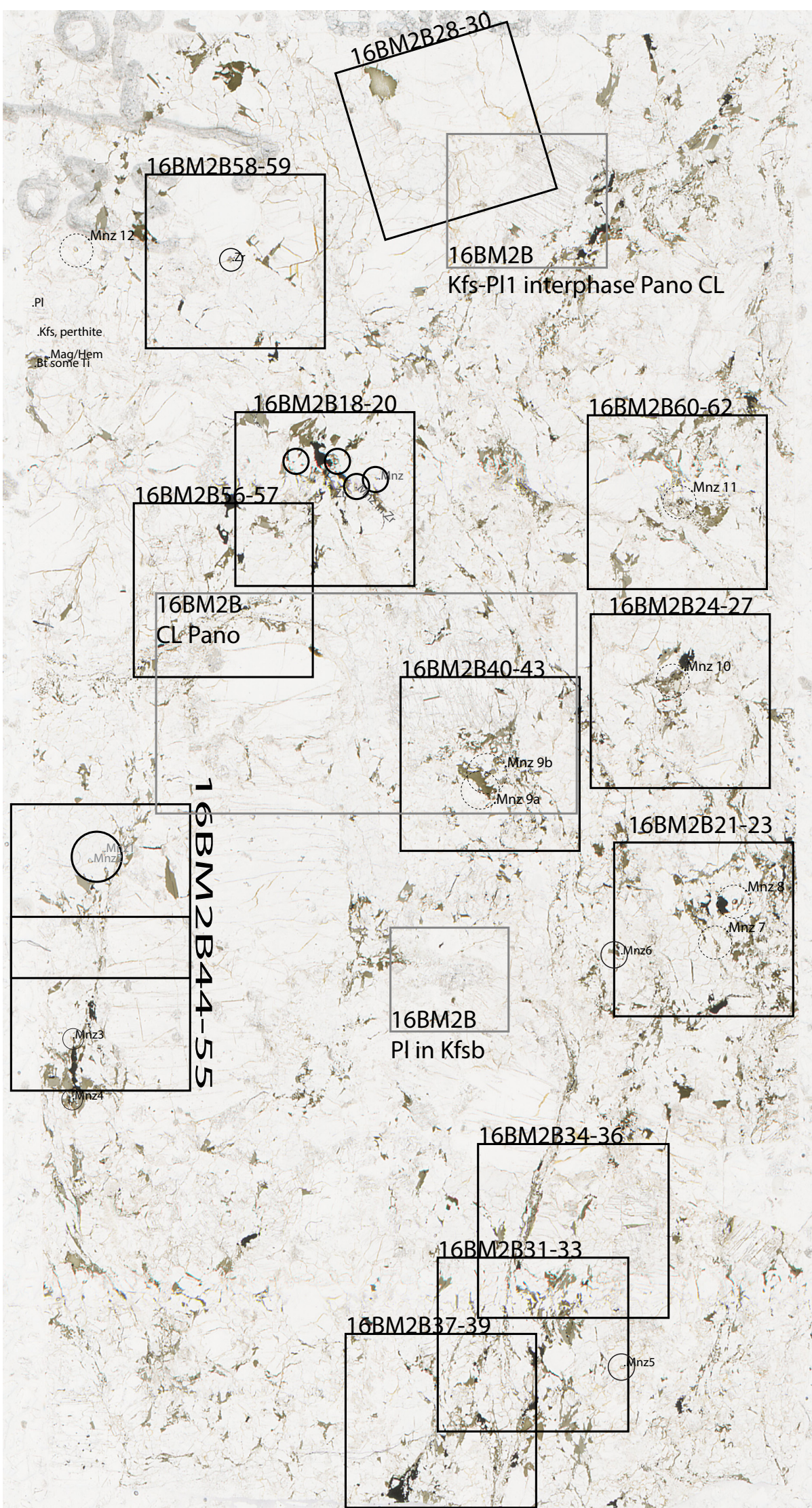


16BM3





16BM2B



16BM2B44-55

Mnz 12
.PI
Kfs, perthite
Mag/Hem
Bt some Ti

16BM2B58-59

16BM2B28-30

16BM2B
Kfs-PI1 interphase Pano CL

16BM2B18-20

16BM2B60-62

16BM2B56-57

16BM2B
CL Pano

16BM2B24-27

16BM2B40-43

Mnz 1
Mnz 2
Mnz 3
Mnz 4

16BM2B21-23

16BM2B
PI in Kfsb

16BM2B34-36

16BM2B31-33

16BM2B37-39

Mnz 8
Mnz 7
Mnz 6

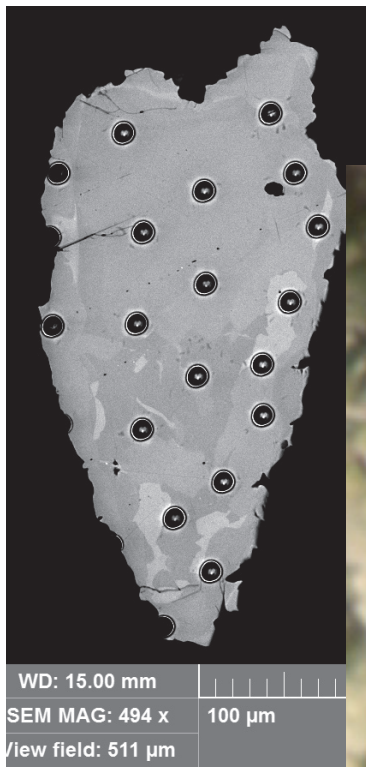
Mnz 9b
Mnz 9a

Mnz 10

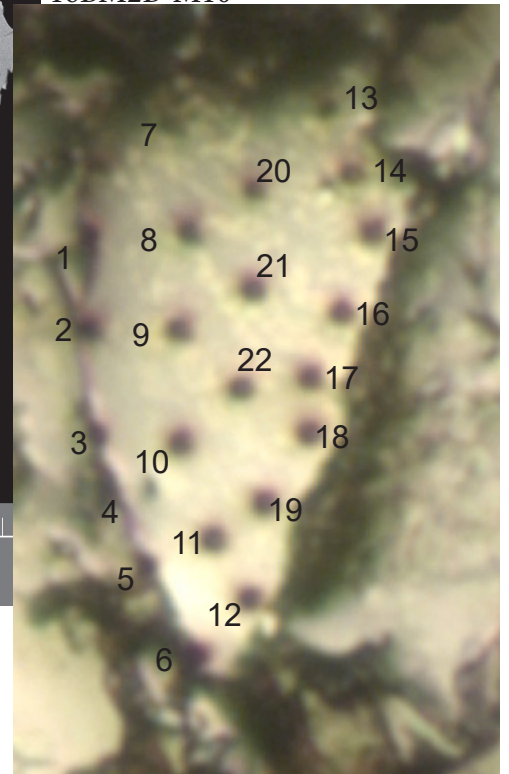
Mnz 11

Mnz 5

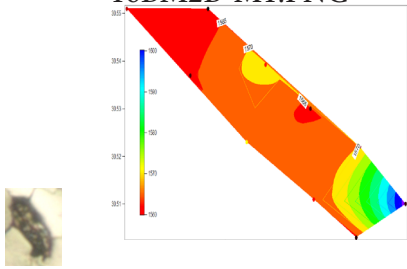
16BM2B Mnz 10



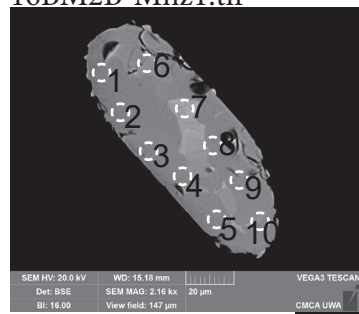
16BM2B-M10



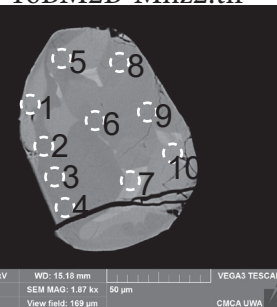
16BM2B-M1.PNG



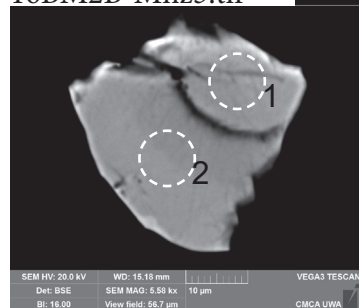
16BM2B-Mnz1.tif



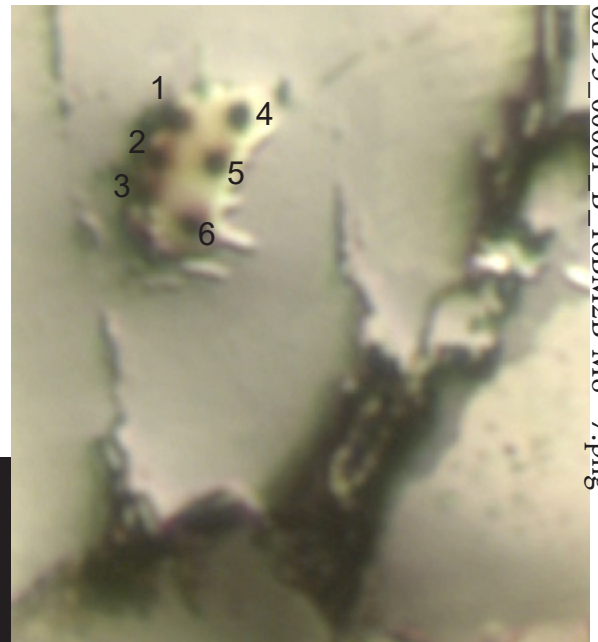
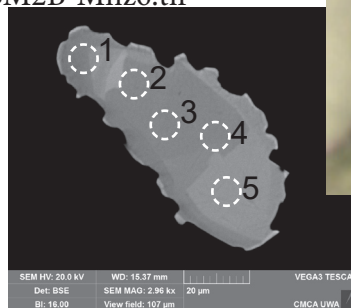
16BM2B-Mnz2.tif



16BM2B-Mnz3.tif

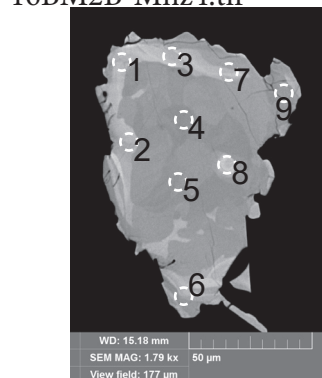


16BM2B-Mnz6.tif

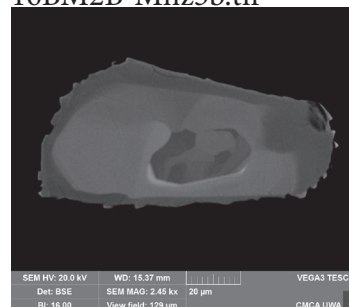


00193_00001_B_16BM2B-M8 - 7.png

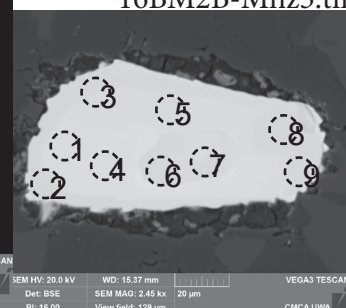
16BM2B-Mnz4.tif



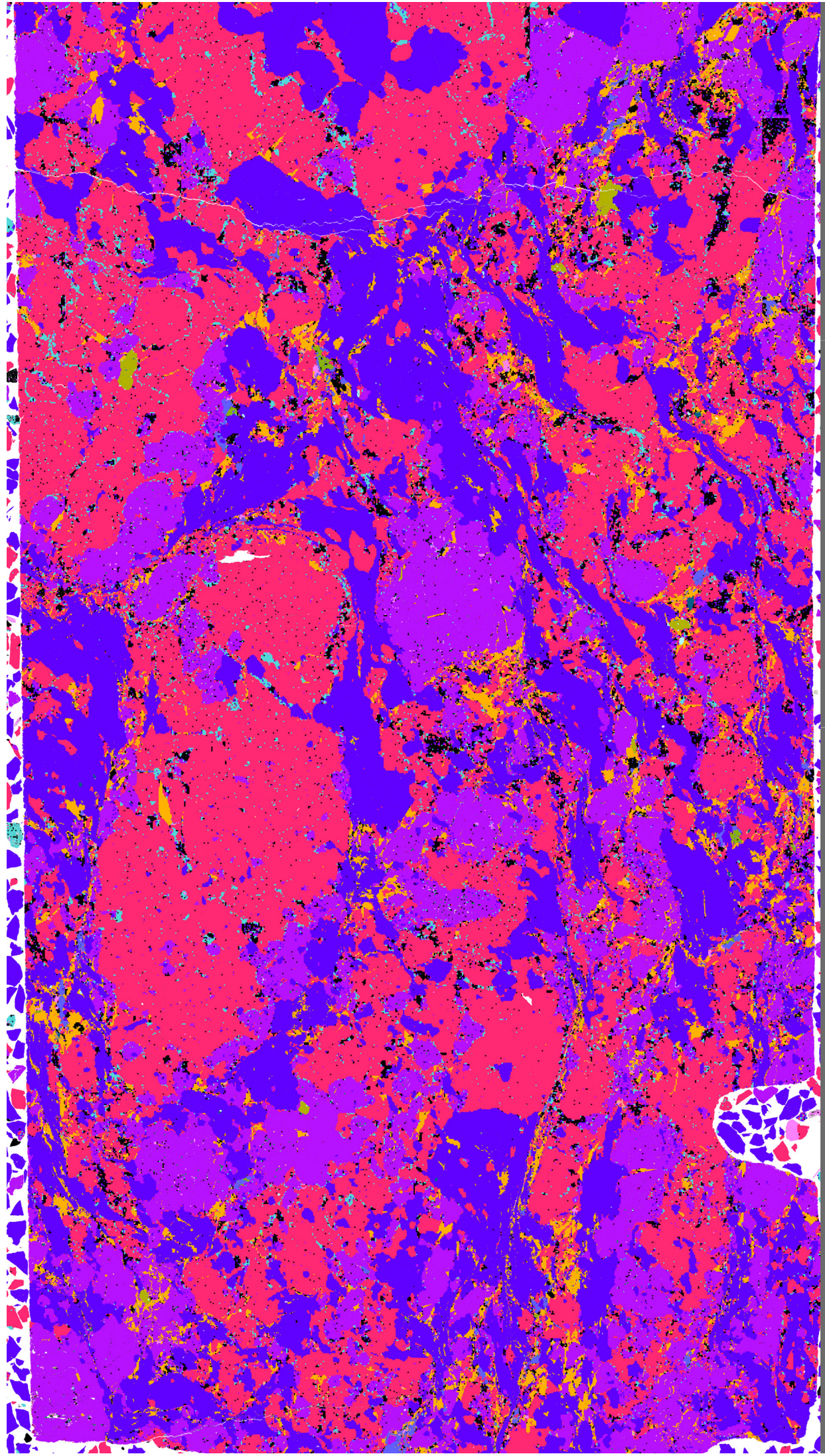
16BM2B-Mnz5b.tif



16BM2B-Mnz5.tif



16BM2B

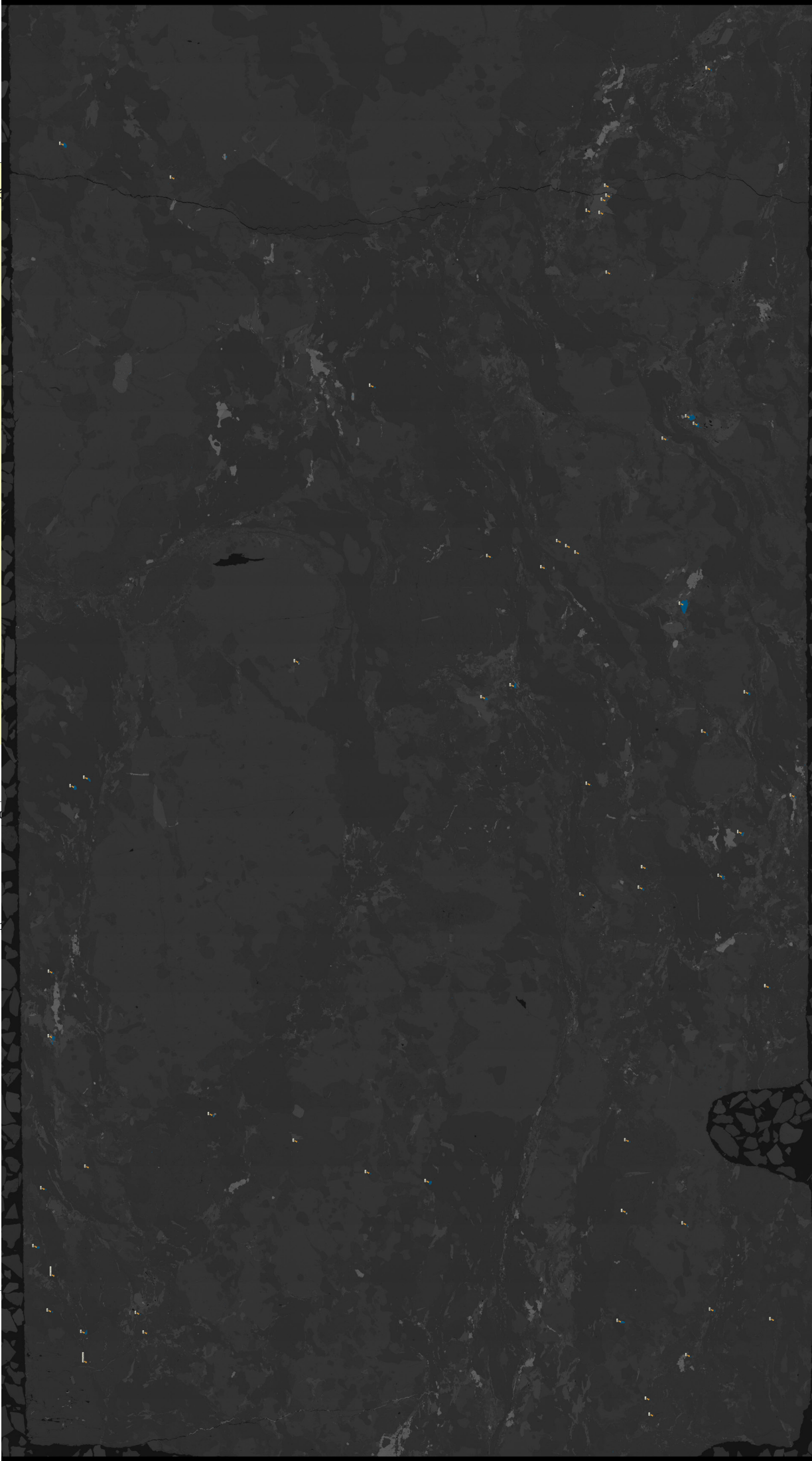


16

10

J

u



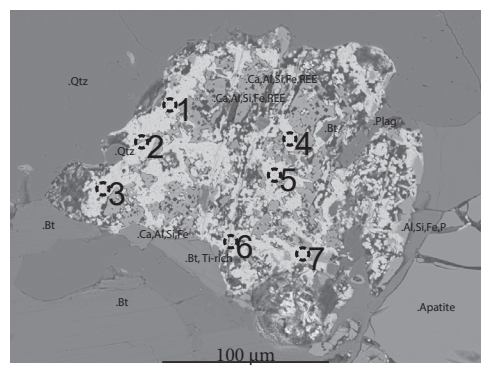
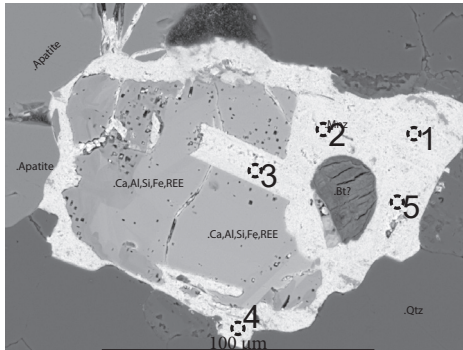
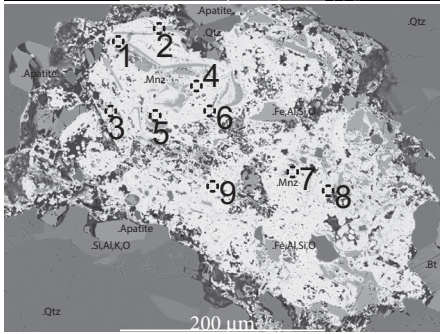
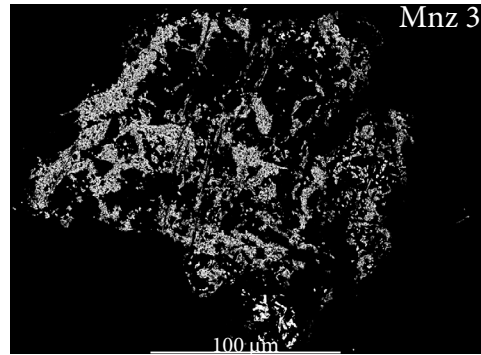
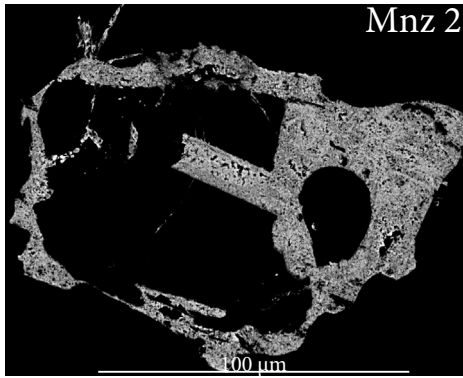
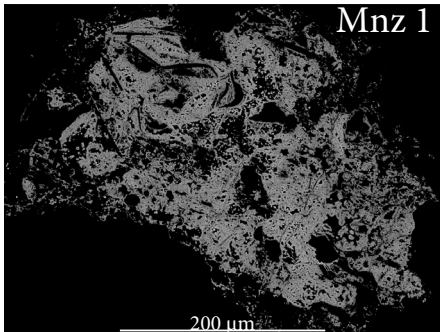
16BM1-2



Mnz 1

Mnz 2

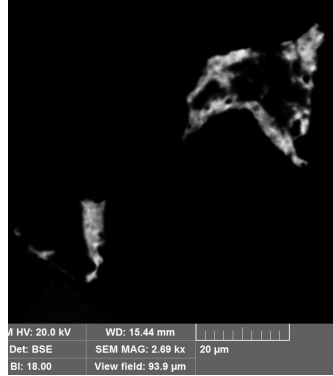
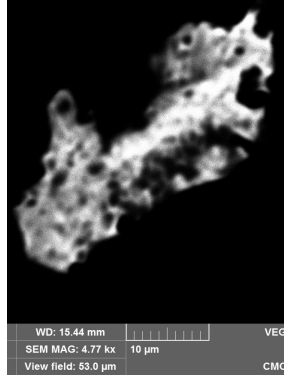
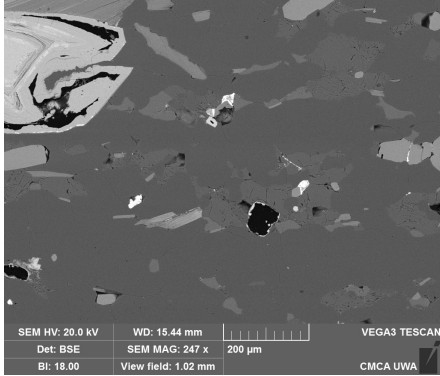
Mnz 3



16BM1-2Mnz4ABC.tif

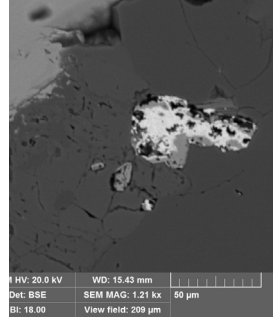
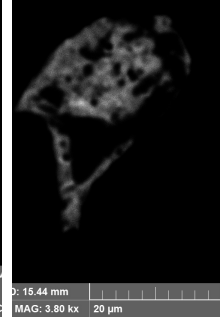
16BM1-2Mnz4A.tif

16BM1-2Mnz4B.tif



16BM1-2Mnz4C.tif

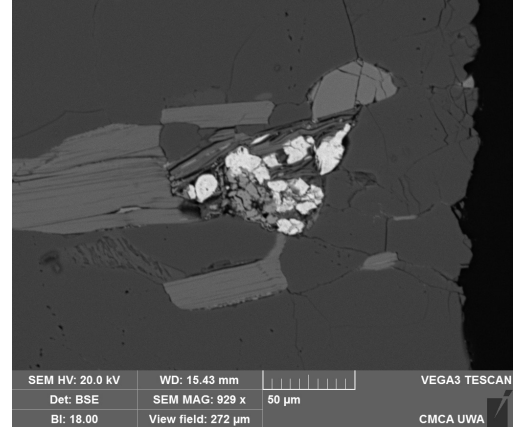
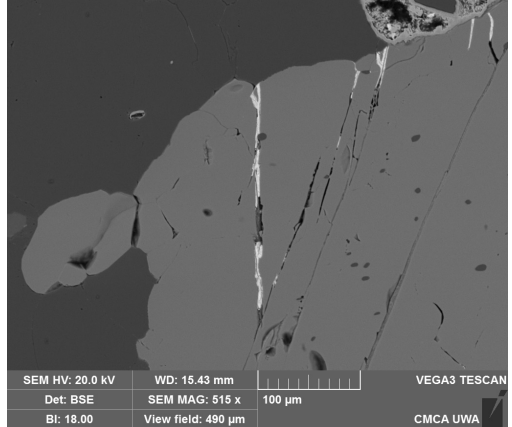
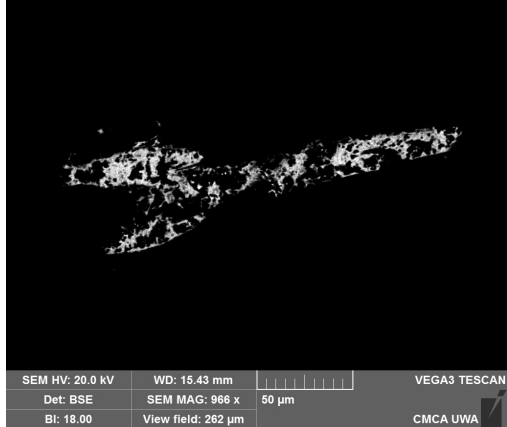
16BM1-2Mnz5.tif



16BM1-2Mnz7.tif

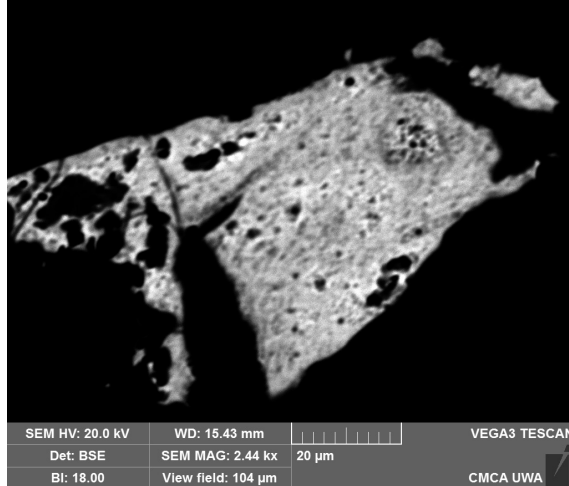
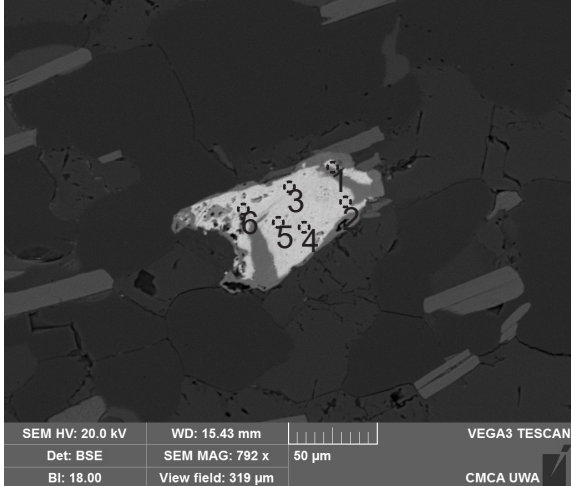
16BM1-2Mnz in Apatite1.tif

16BM1-2Mnz6.tif

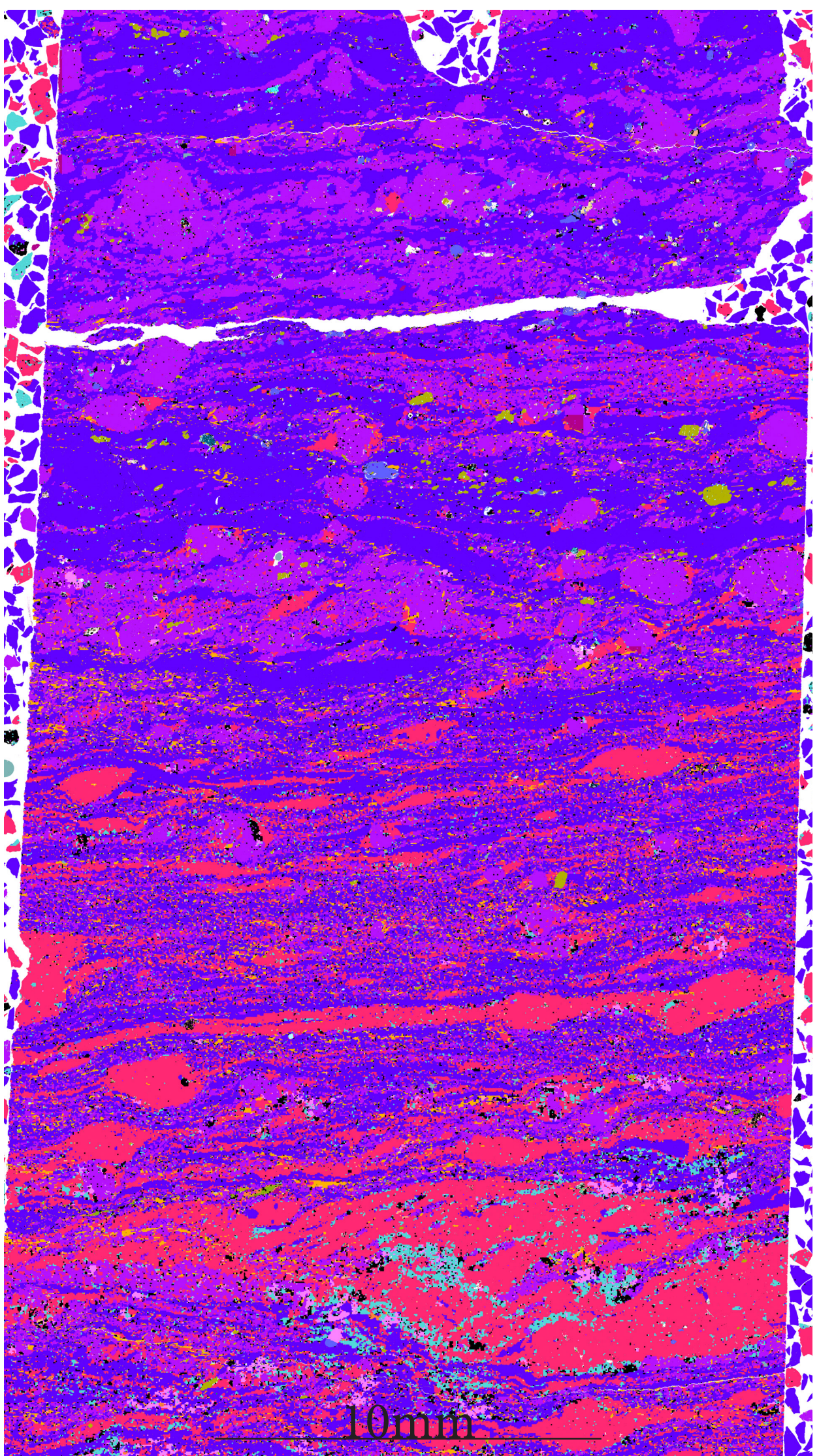


16BM1-2Mnz8.tif

16BM1-2Mnz8b.tif



16BM1-2



10mm

