

Apatite dating

U (238) & Pb (207+206);

16BM3-1 Wallrock granulite

16BM4-1 Mylonite

16BM4-2 Mylonite

Mount Boothby Mylonites

- Microstructural images from SCAN and TIMA side by side
 - Micrographs and BSE images with references to the Thin Sections
 - Apatite from these BSE to analyze in LA-MC-ICP-MS

Results summary / comments

16BM3 Protomylonite:

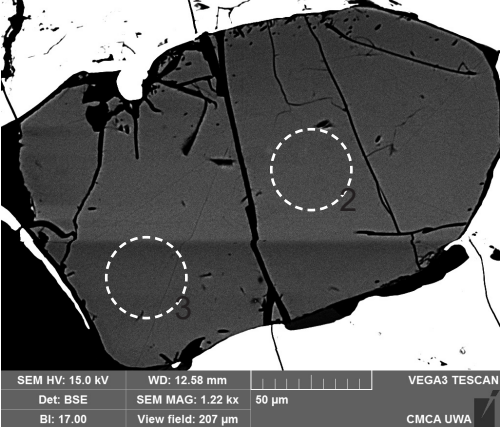
16BM4-1 Mylonite:

16BM4-2 Mylonite:

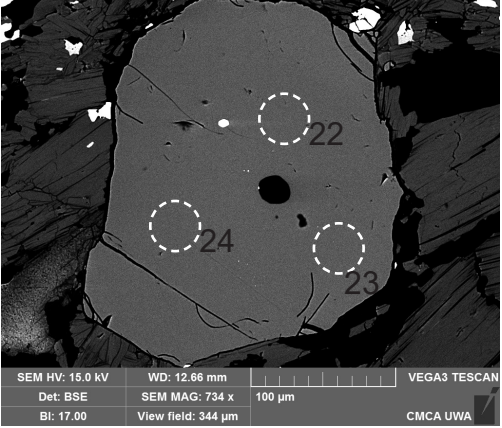
16BM3



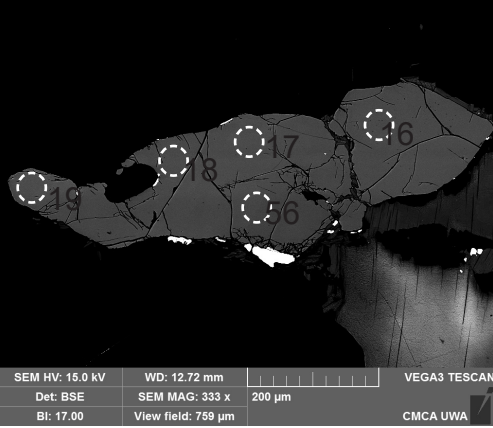
16BM3-Lass-Ap2.tif



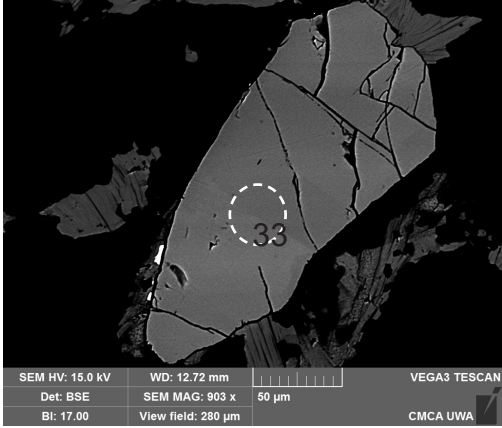
16BM3-Lass-Ap3a.tif



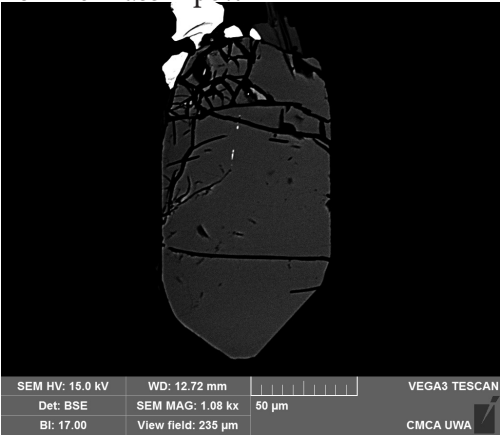
16BM3-Lass-Ap3b-2.tif



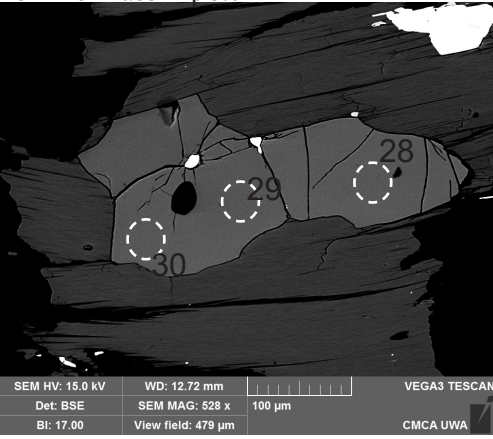
16BM3-Lass-Ap4.tif



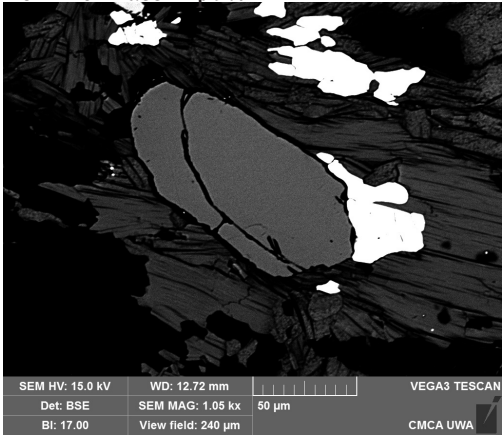
16BM3-Lass-Ap5.tif



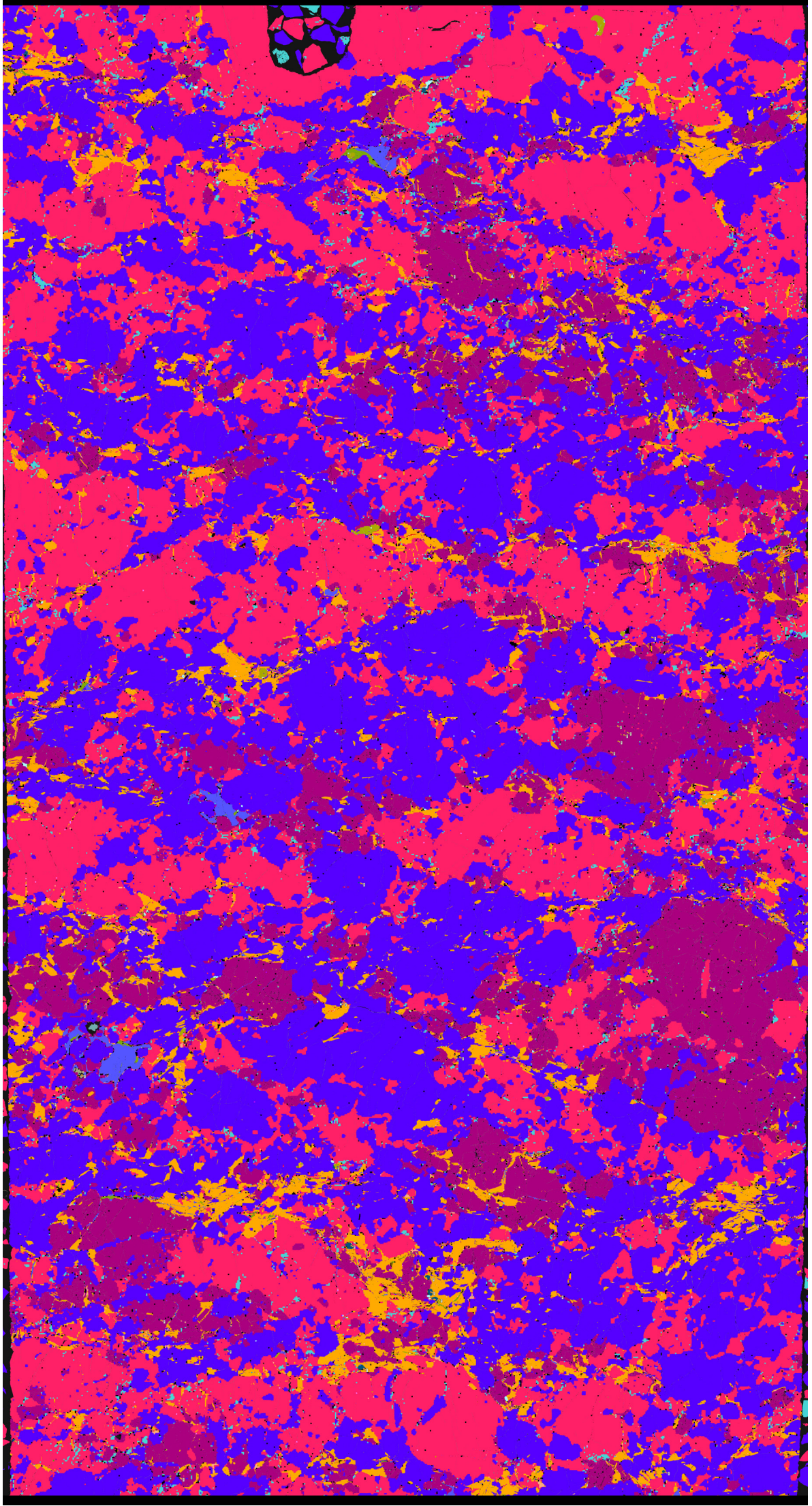
16BM3-Lass-Ap6.tif



16BM3-Lass-Ap7.tif



16BM3



47-52 Xtra
TOR 4-9

2:
3:

14:
14, 15

10:
10

16:
17:
18:

11, 12
12:

19-19
53-58 top2bottom
54:
55:
56:
57:
58:

25:
26:
25, 26, 27

20:
20

23:
24:
22-24

28:
29:
30:
28-30

34:
34

33:
33

38:
38-39

35:
35
36

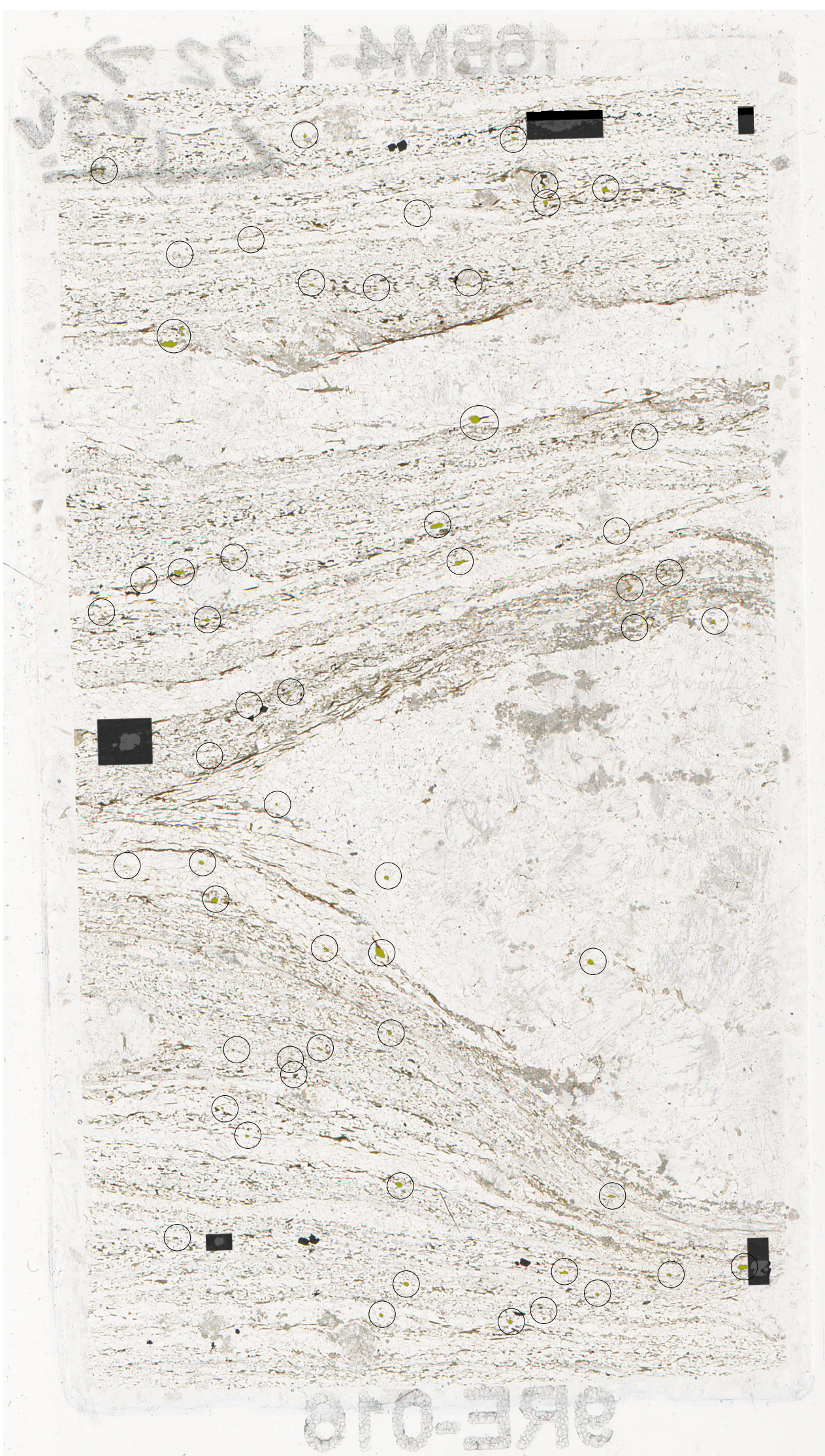
40:
41:
42:
40-42

43:
44:
43

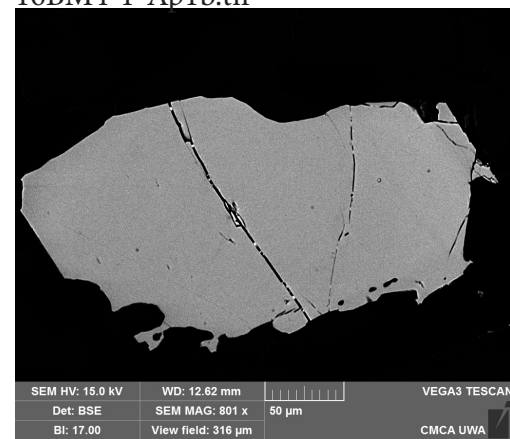
45:
45

46:
46

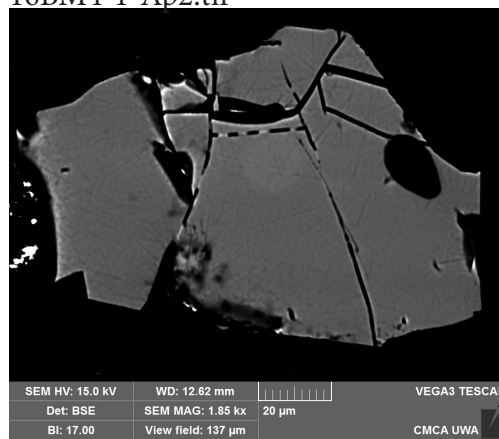
16BM4-1



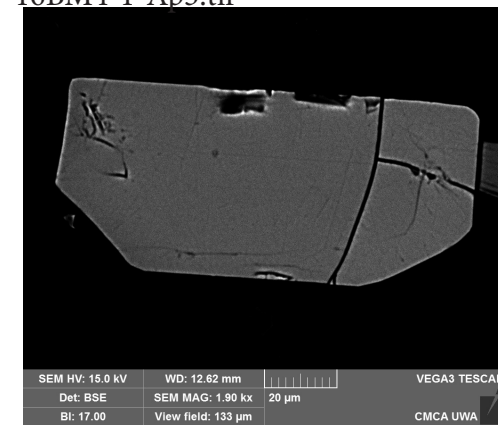
16BM4-1-Ap1b.tif



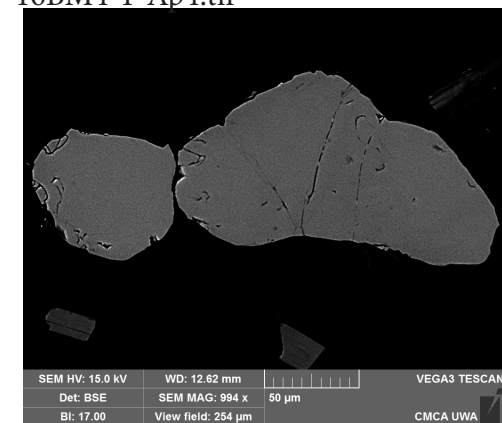
16BM4-1-Ap2.tif



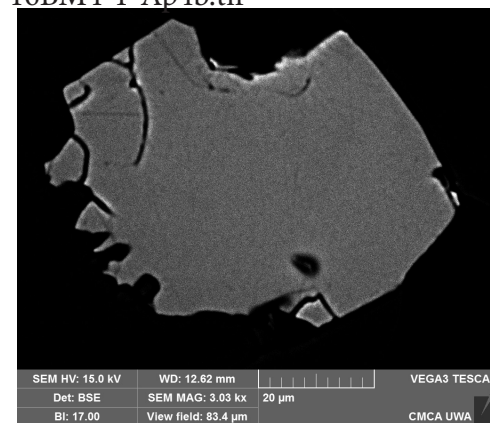
16BM4-1-Ap3.tif



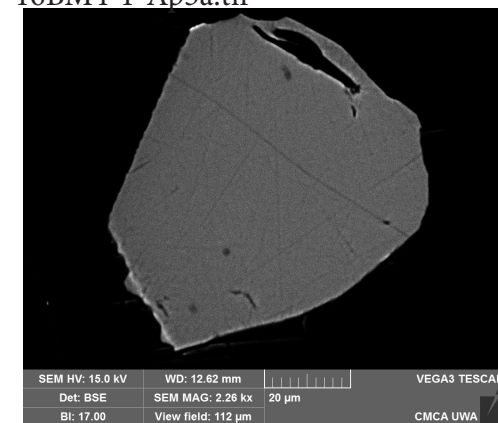
16BM4-1-Ap4.tif



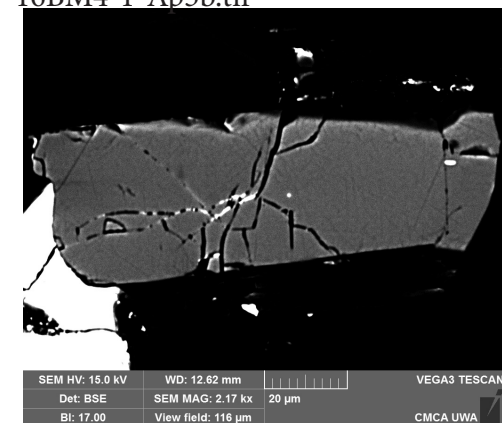
16BM4-1-Ap4b.tif



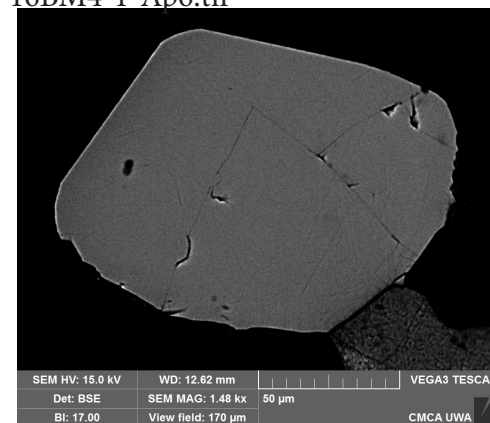
16BM4-1-Ap5a.tif



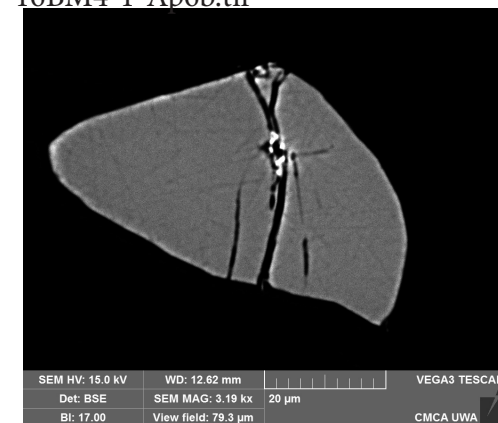
16BM4-1-Ap5b.tif



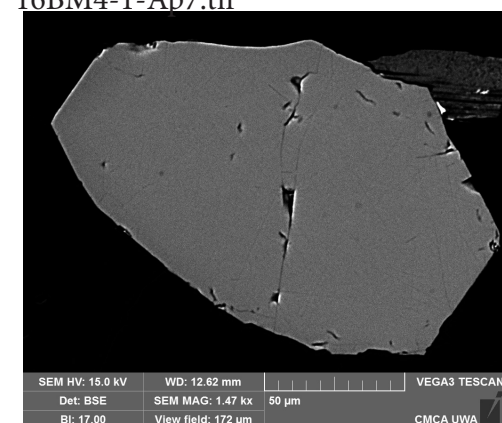
16BM4-1-Ap6.tif



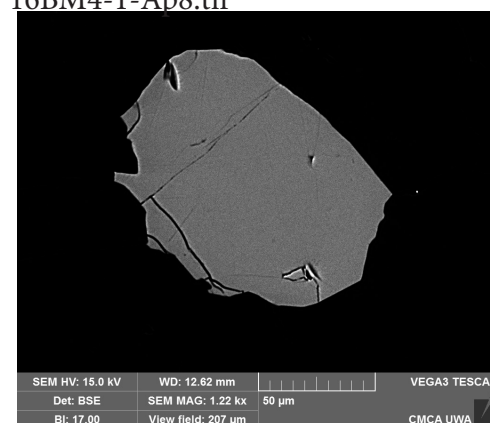
16BM4-1-Ap6b.tif



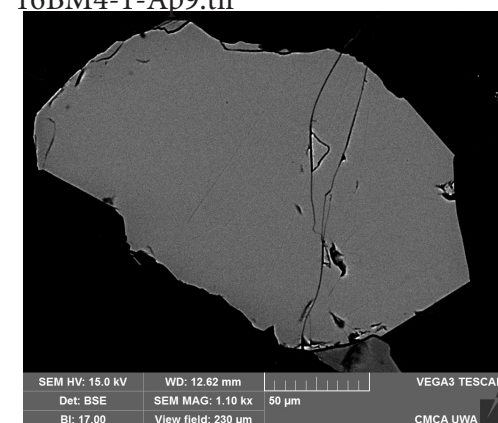
16BM4-1-Ap7.tif



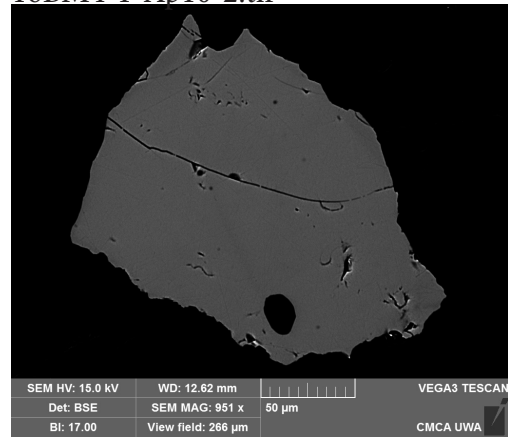
16BM4-1-Ap8.tif



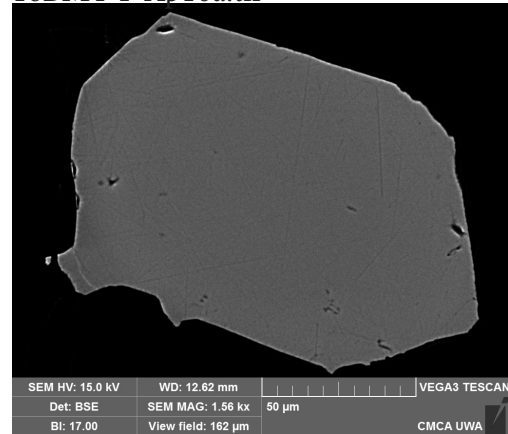
16BM4-1-Ap9.tif



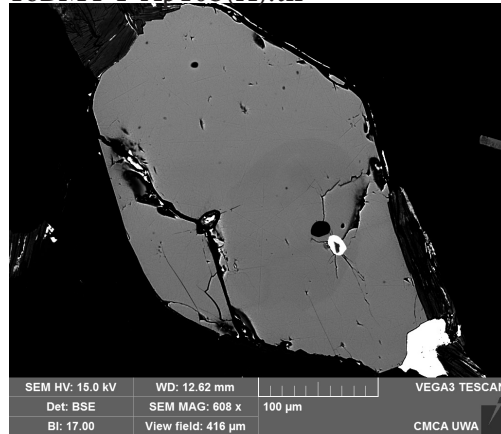
16BM4-1-Ap10-2.tif



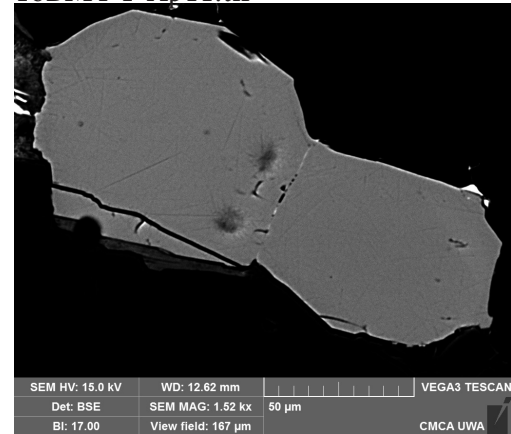
16BM4-1-Ap10a.tif



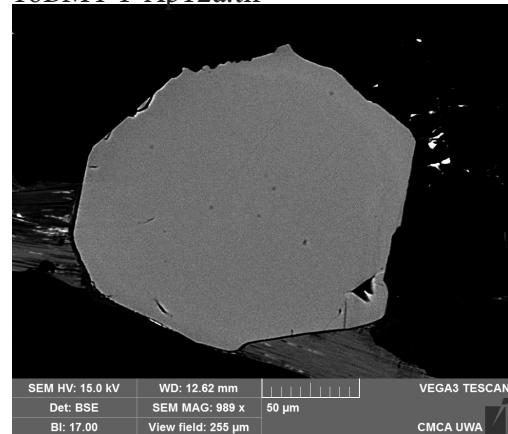
16BM4-1-Ap10b(X).tif



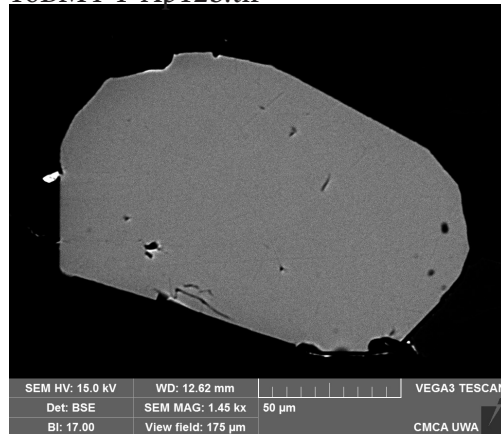
16BM4-1-Ap11.tif



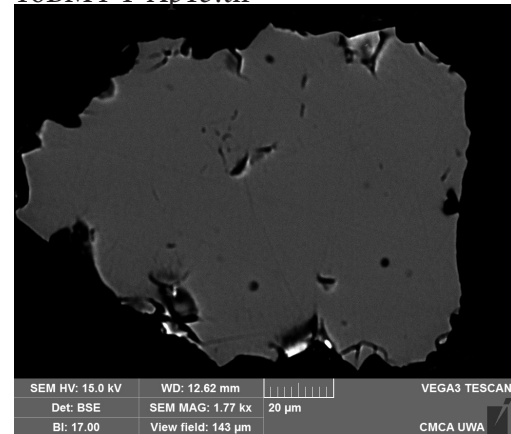
16BM4-1-Ap12a.tif



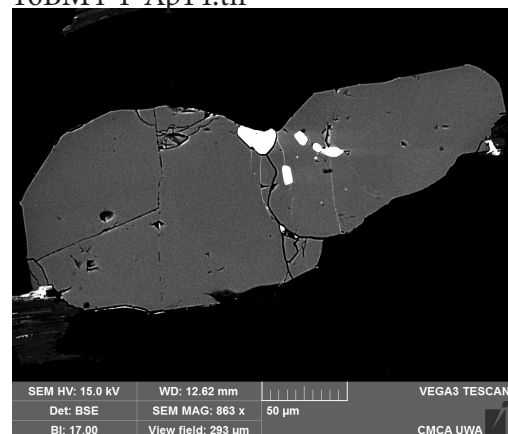
16BM4-1-Ap12b.tif



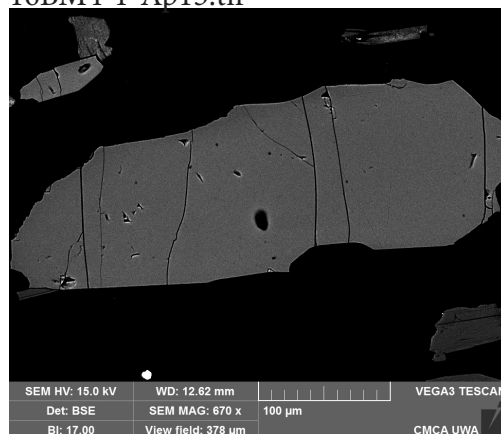
16BM4-1-Ap13.tif



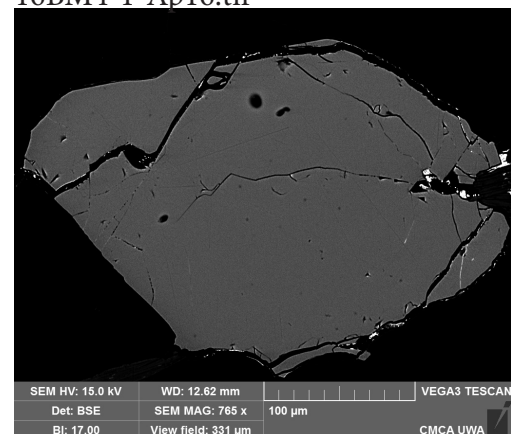
16BM4-1-Ap14.tif



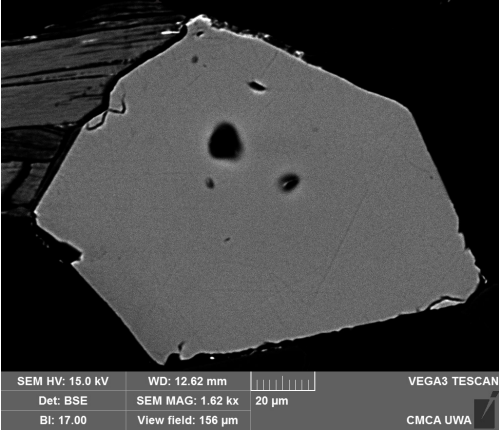
16BM4-1-Ap15.tif



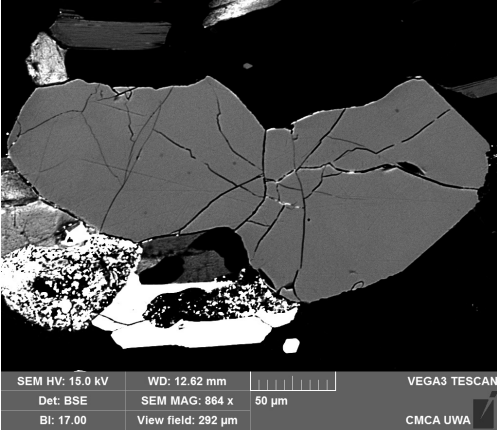
16BM4-1-Ap16.tif



16BM4-1-Ap17.tif



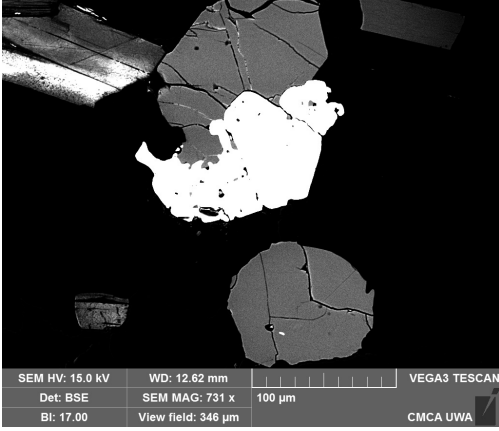
16BM4-1-Ap18.tif



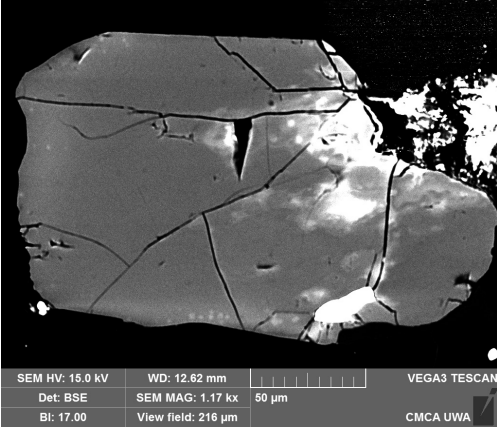
16BM4-1-Ap19a.tif



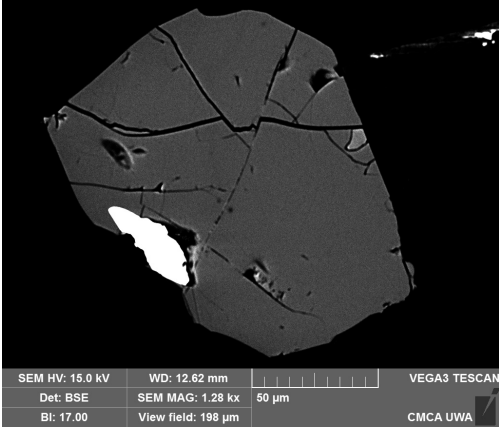
16BM4-1-Ap19bc.tif



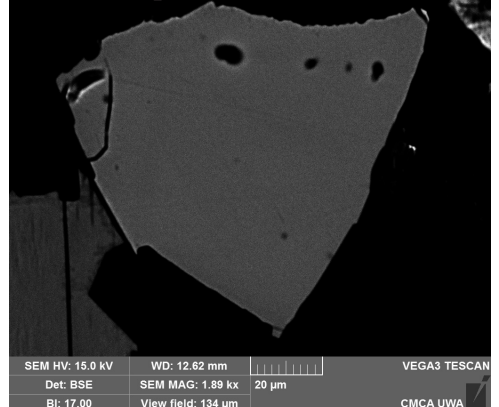
16BM4-1-Ap20.tif



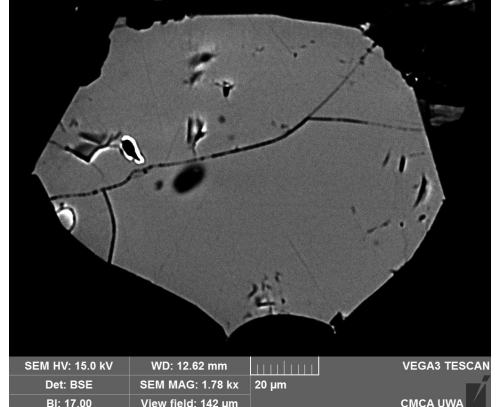
16BM4-1-Ap21.tif



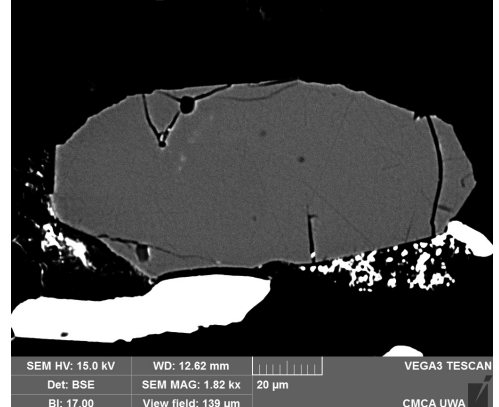
16BM4-1-Ap21b.tif



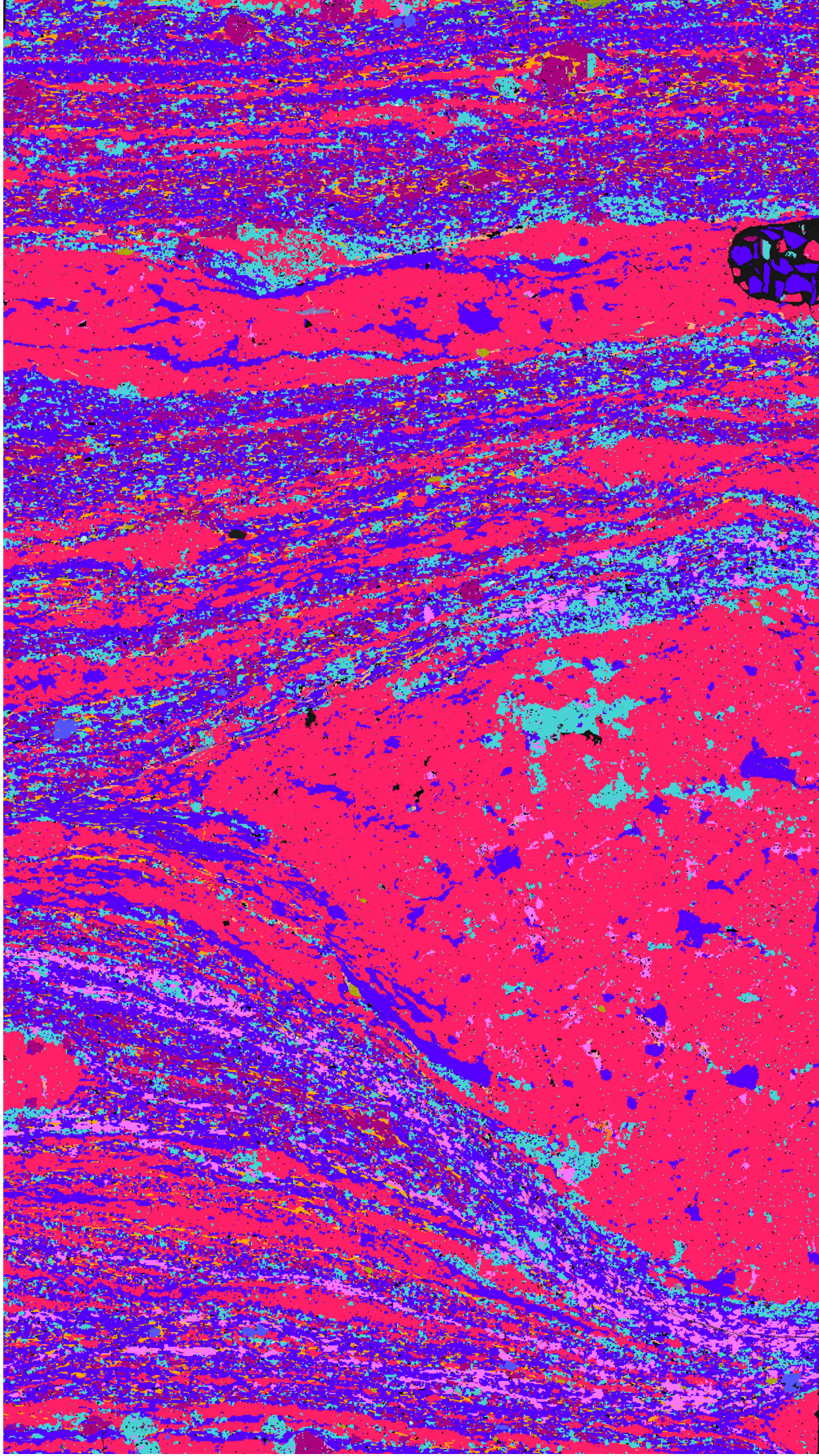
16BM4-1-Ap22.tif

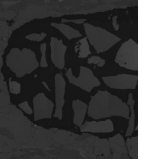
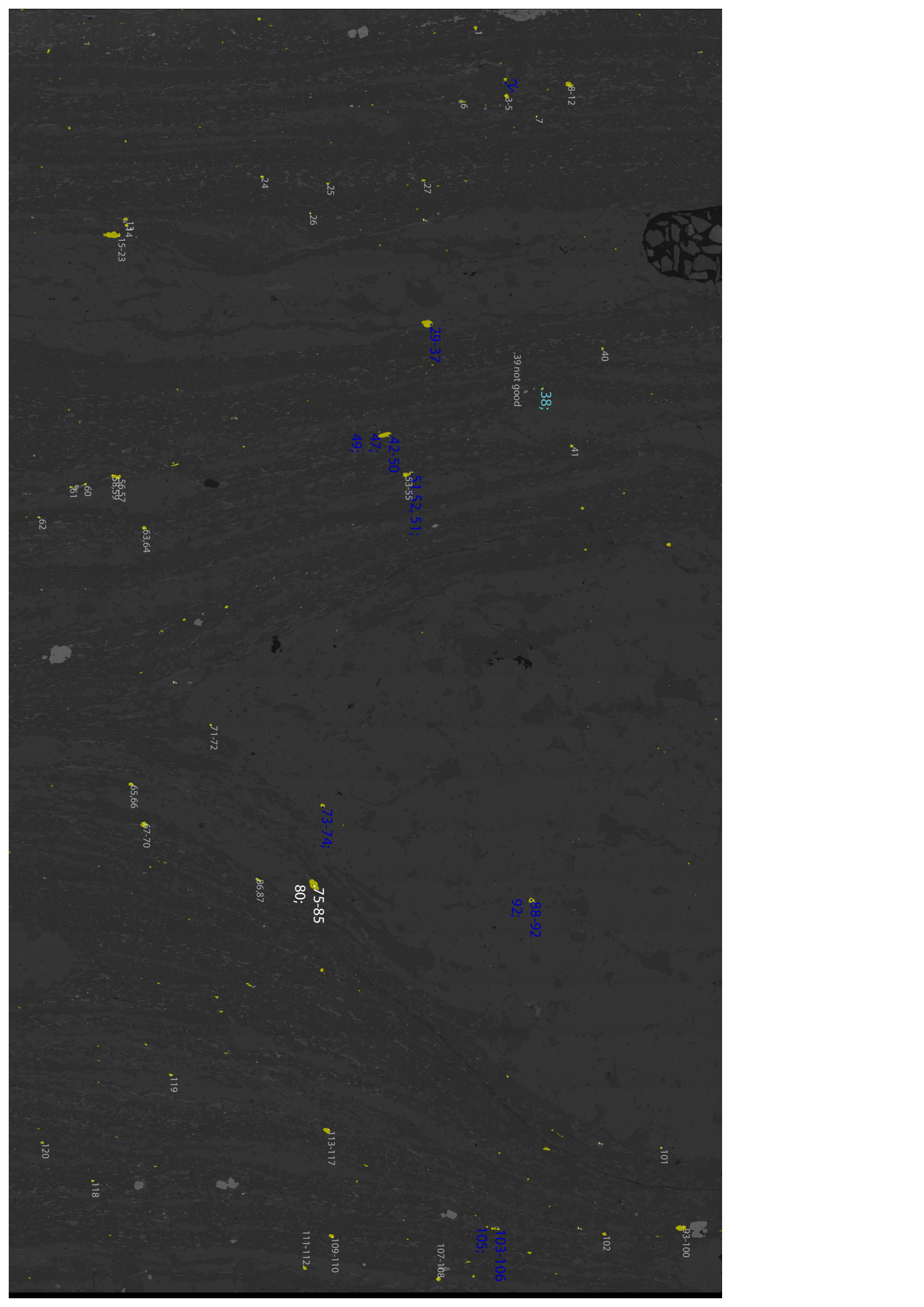


16BM4-1-Ap23.tif



16BM4-1





8-12

3-5

6

7

24

25

26

27

134
15-23

29-37

40

.39 not good

38

41

42-50

47

49

51-52, 51

53-55

56-57

60

61

62

63-64

71-72

65-66

67-70

73-74

75-85

80

86-87

88-92
92

119

101

120

118

113-117

111-112

109-110

107-108

103-105
105

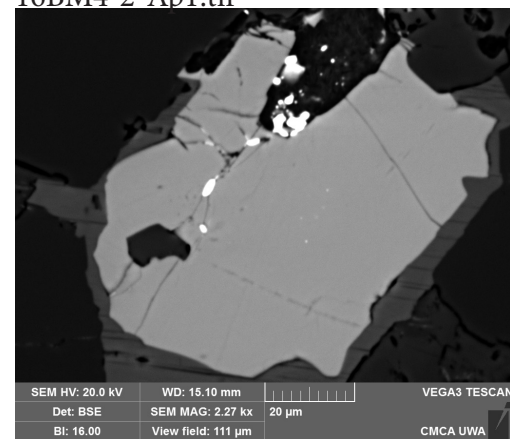
102

93-100

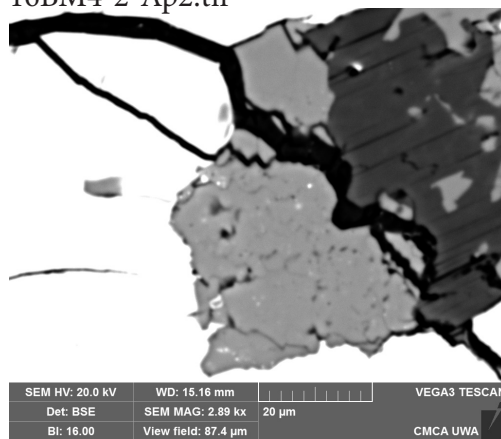
16BM4-2



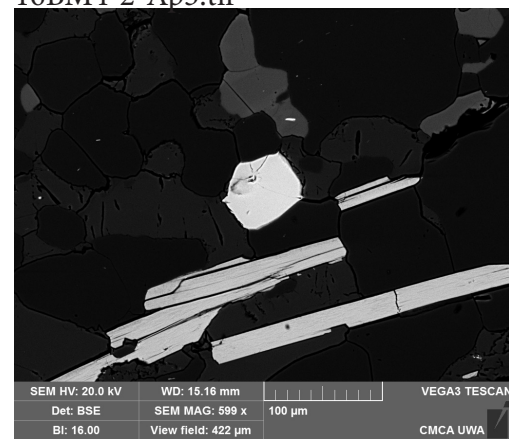
16BM4-2-Ap1.tif



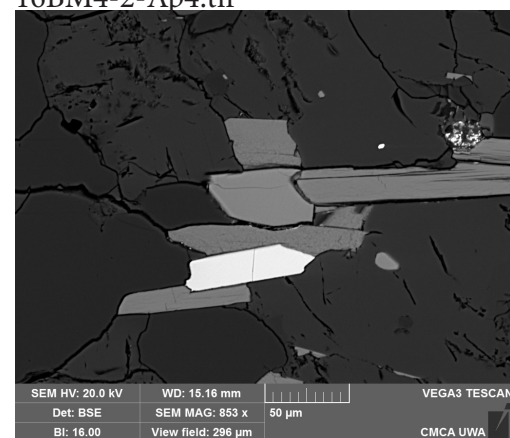
16BM4-2-Ap2.tif



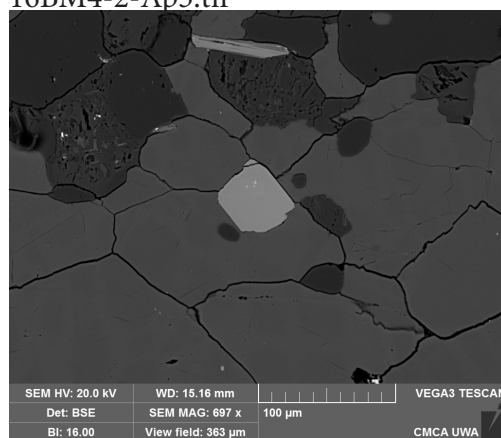
16BM4-2-Ap3.tif



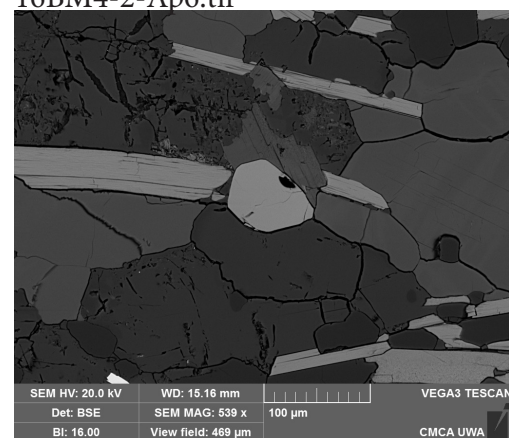
16BM4-2-Ap4.tif



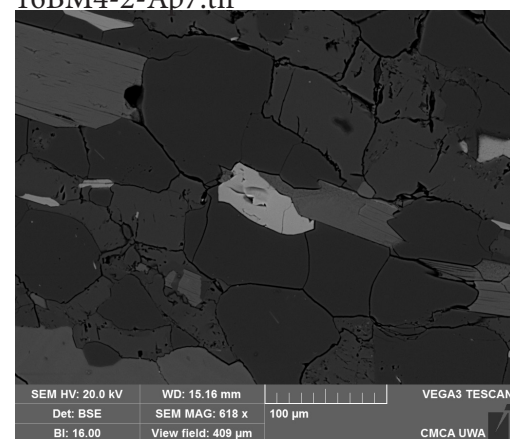
16BM4-2-Ap5.tif



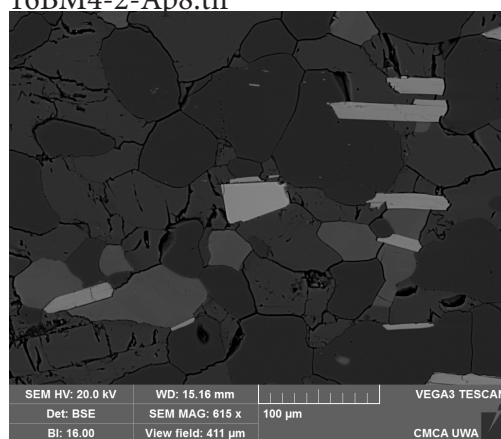
16BM4-2-Ap6.tif



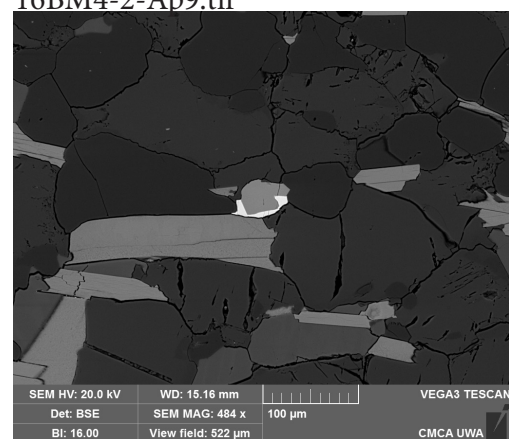
16BM4-2-Ap7.tif



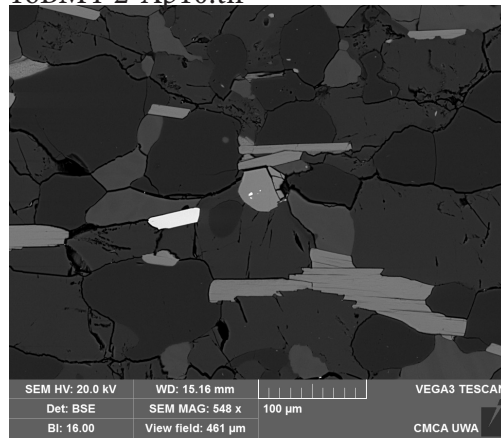
16BM4-2-Ap8.tif



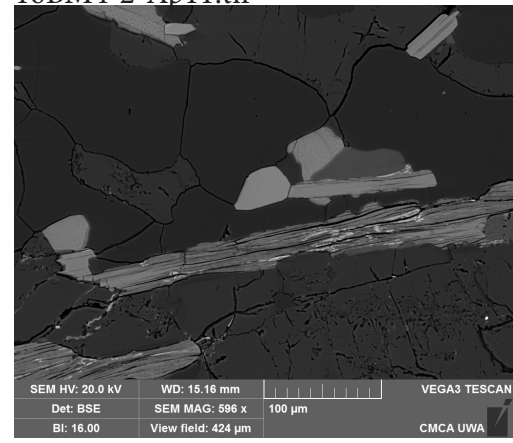
16BM4-2-Ap9.tif



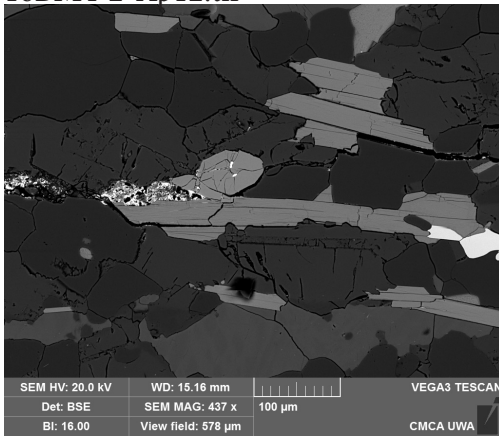
16BM4-2-Ap10.tif



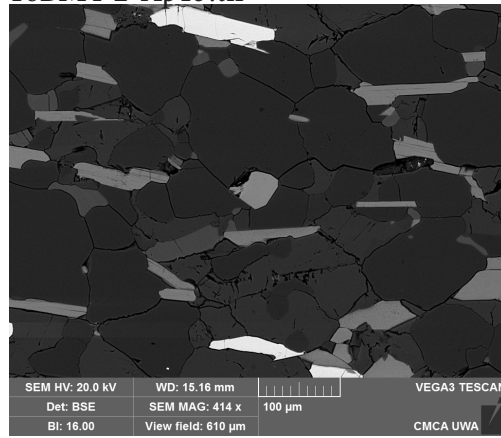
16BM4-2-Ap11.tif



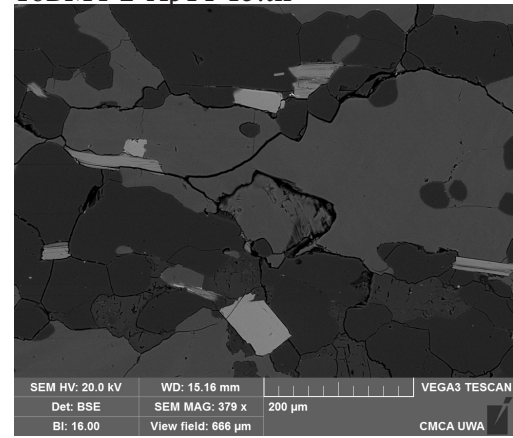
16BM4-2-Ap12.tif



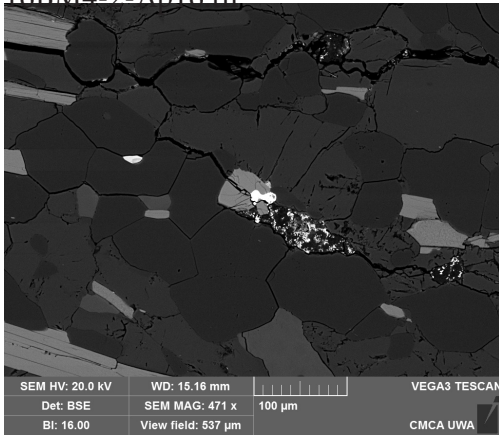
16BM4-2-Ap13.tif



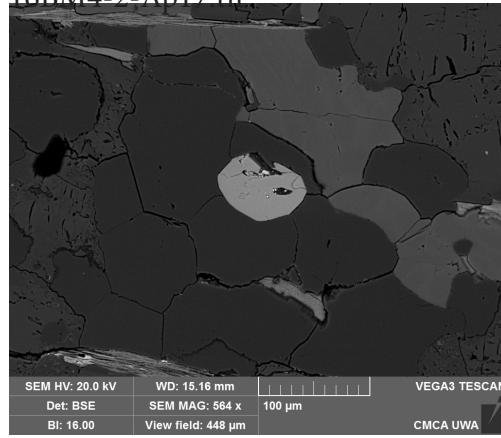
16BM4-2-Ap14-15.tif



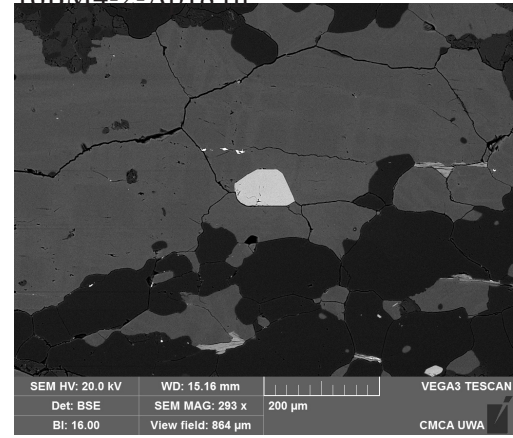
16BM4-2-Ap16.tif



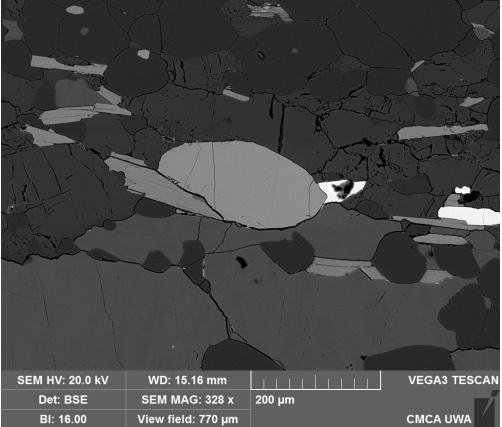
16BM4-2-Ap17.tif



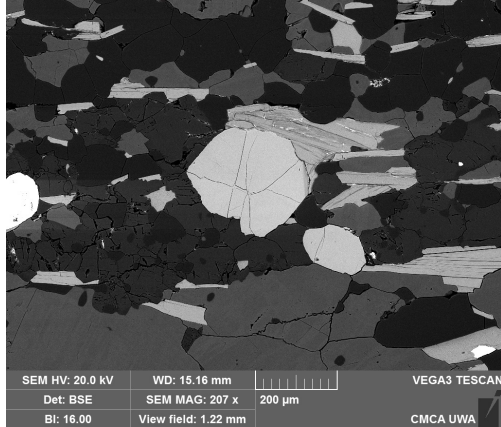
16BM4-2-Ap18.tif



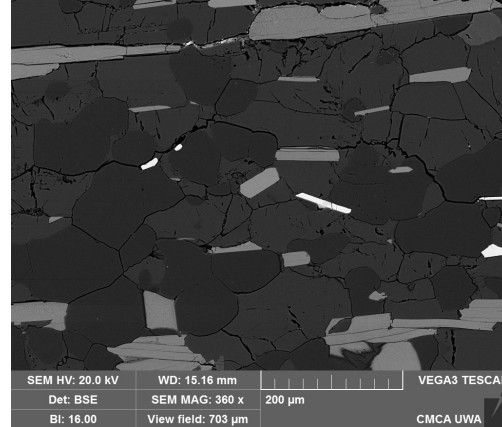
16BM4-2-Ap18a.tif



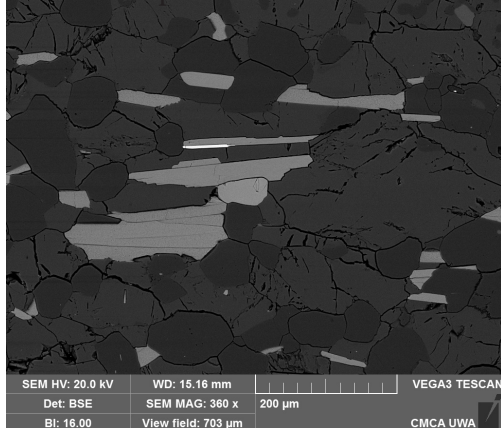
16BM4-2-Ap18bc.tif



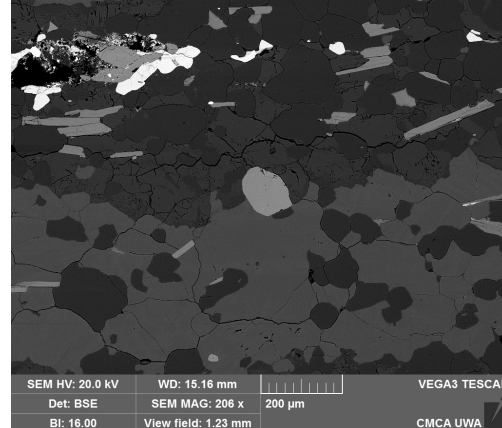
16BM4-2-Ap19.tif



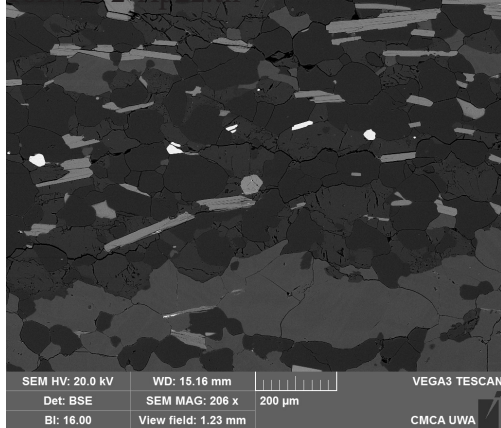
16BM4-2-Ap20.tif



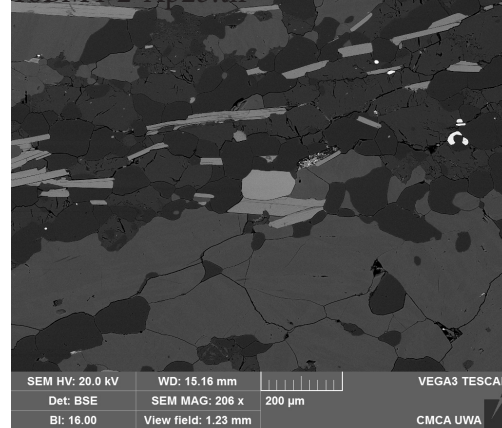
16BM4-2-Ap21.tif



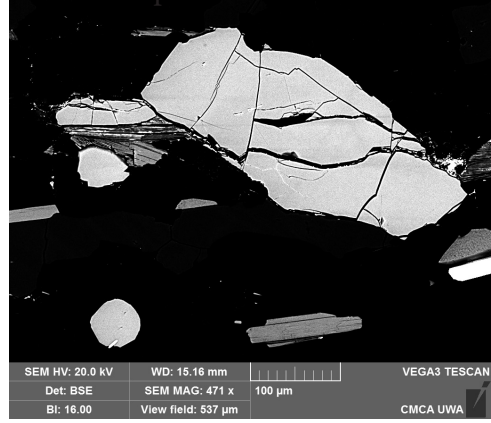
16BM4-2-Ap22.tif



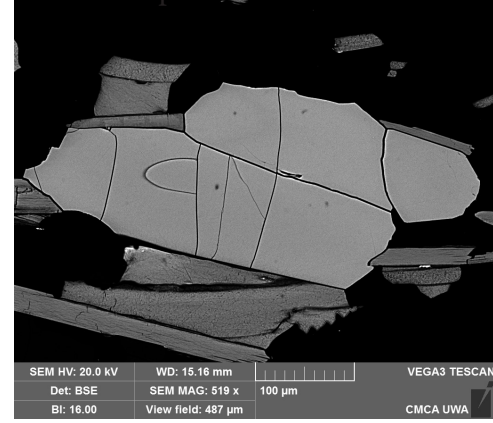
16BM4-2-Ap23.tif



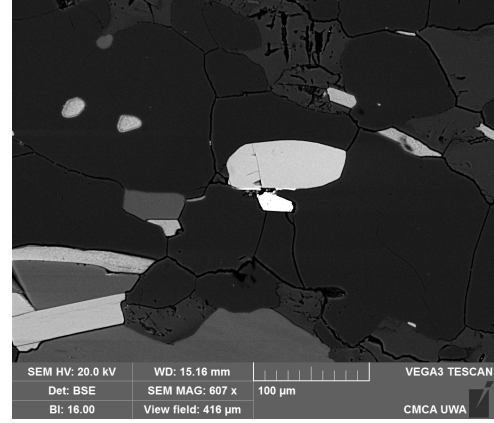
16BM4-2-Ap24b.tif



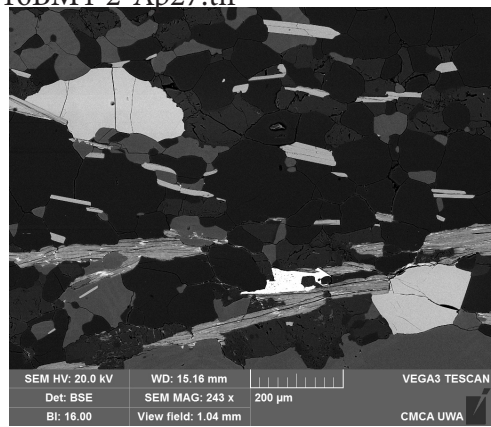
16BM4-2-Ap25.tif



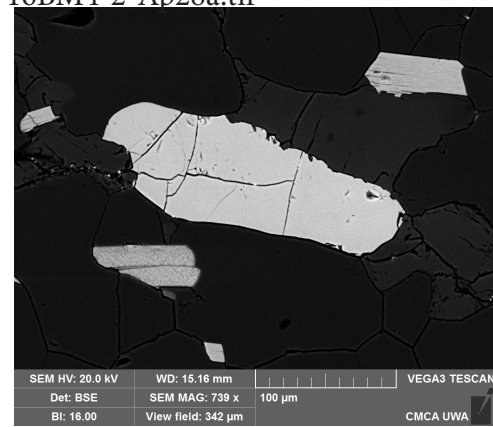
16BM4-2-Ap26.tif



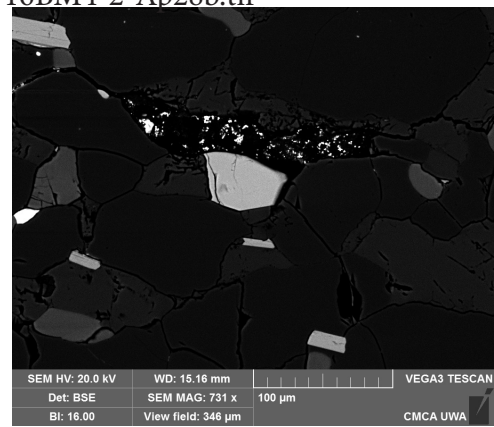
16BM4-2-Ap27.tif



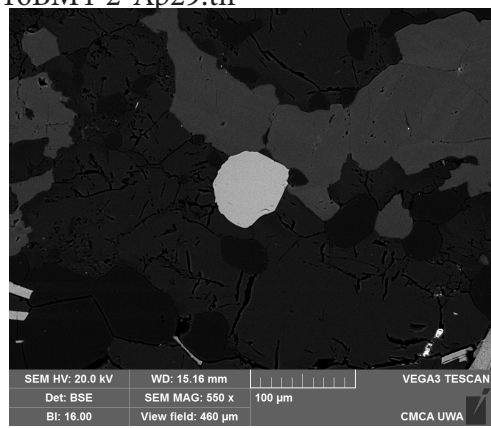
16BM4-2-Ap28a.tif



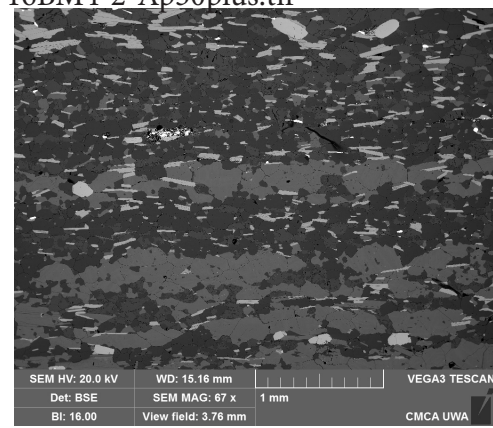
16BM4-2-Ap28b.tif



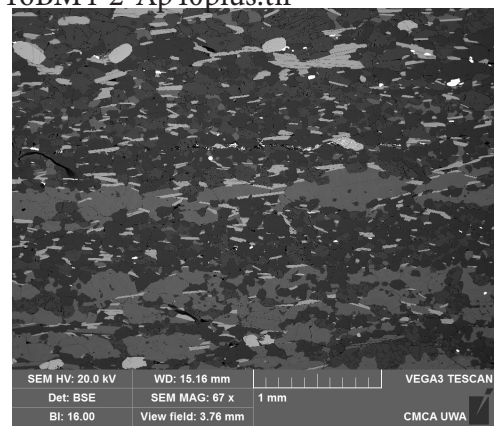
16BM4-2-Ap29.tif



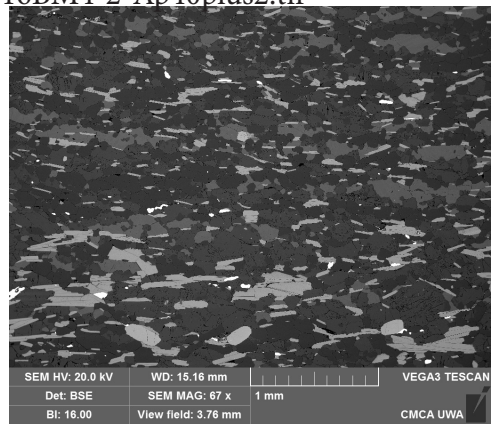
16BM4-2-Ap30plus.tif



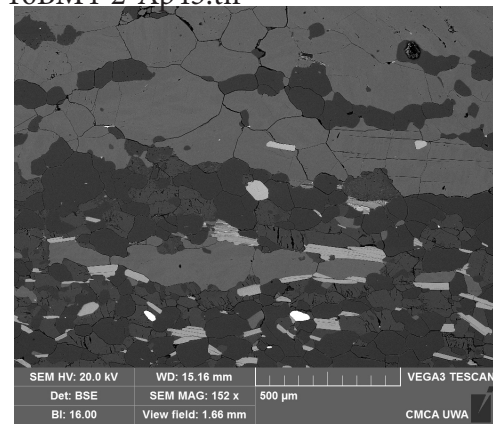
16BM4-2-Ap40plus.tif



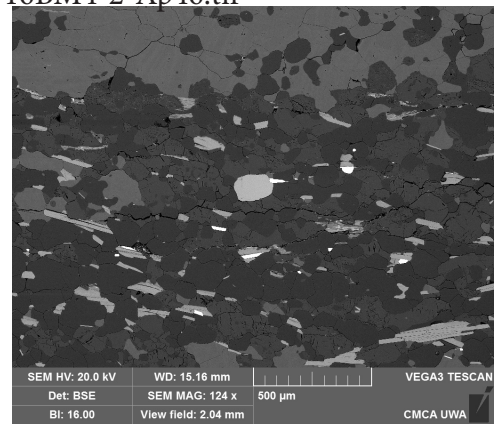
16BM4-2-Ap40plus2.tif



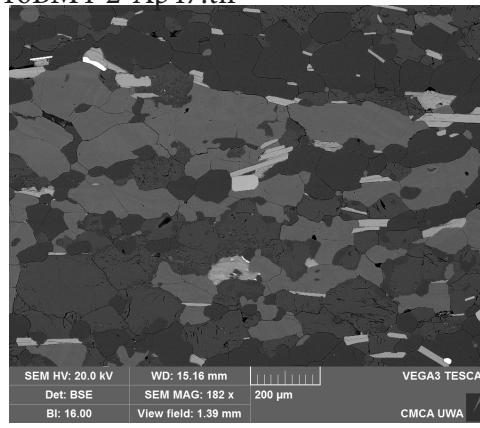
16BM4-2-Ap45.tif



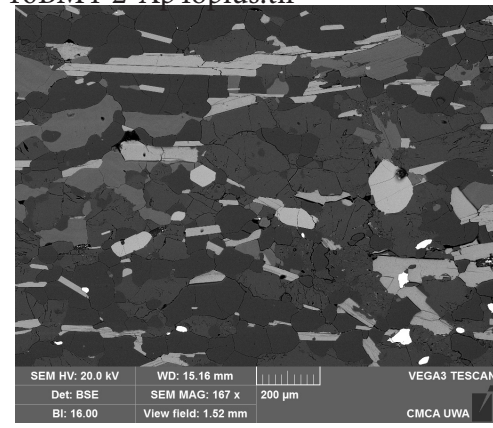
16BM4-2-Ap46.tif



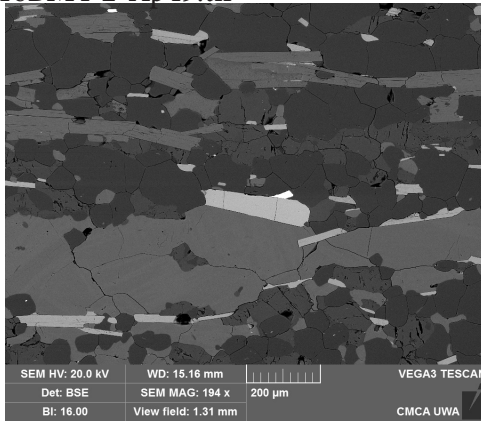
16BM4-2-Ap47.tif



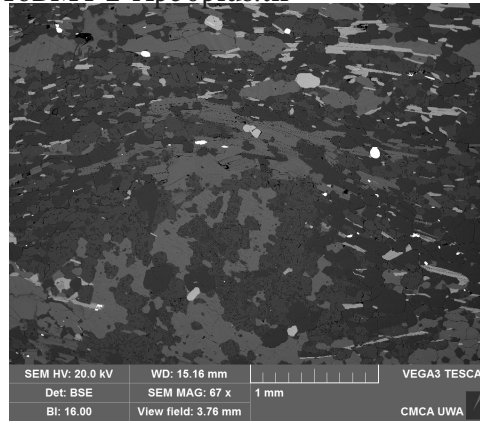
16BM4-2-Ap48plus.tif



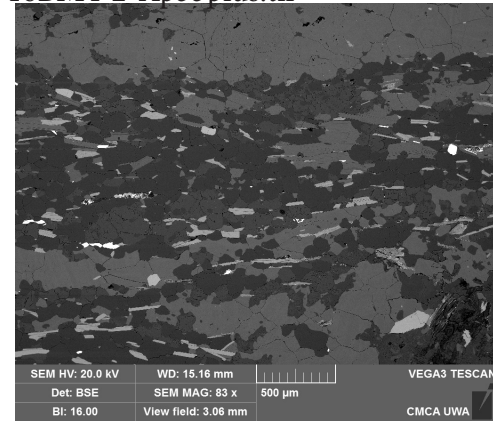
16BM4-2-Ap49.tif



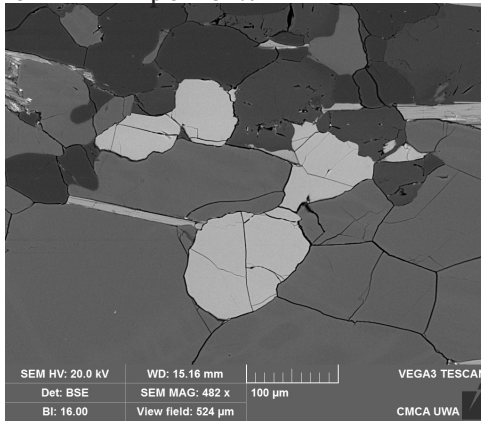
16BM4-2-Ap50plus.tif



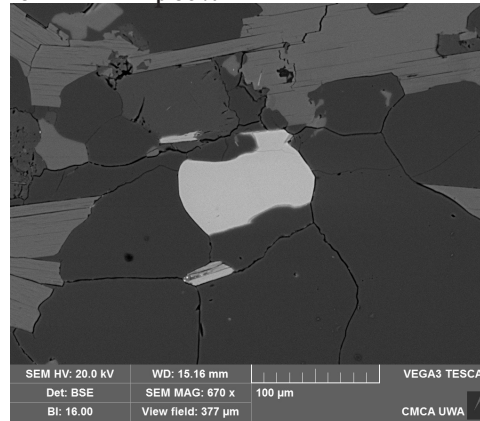
16BM4-2-Ap55plus.tif



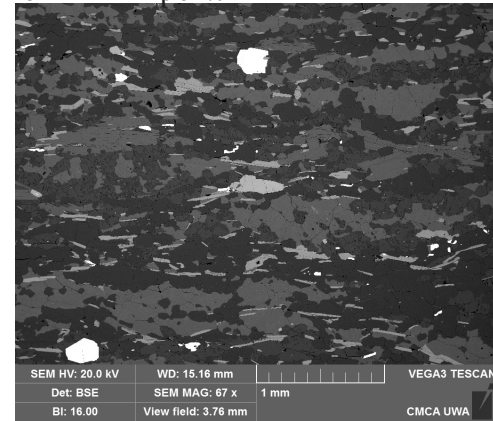
16BM4-2-Ap61-62.tif



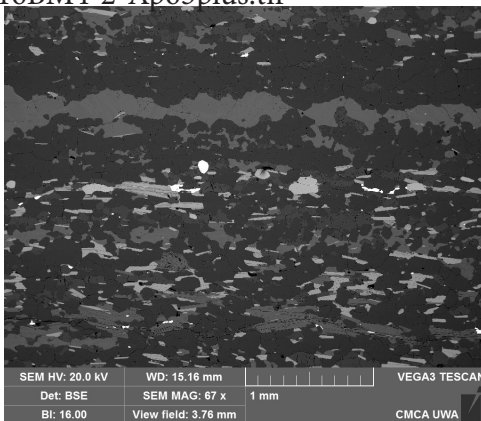
16BM4-2-Ap63.tif



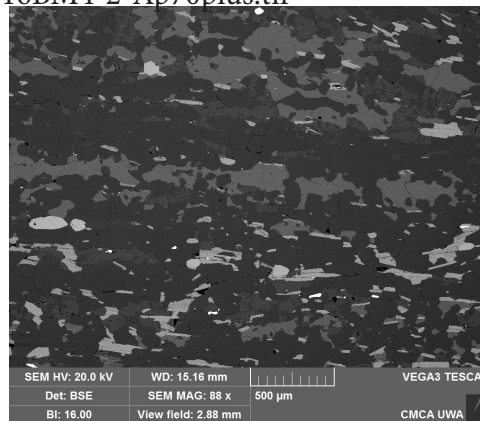
16BM4-2-Ap64.tif



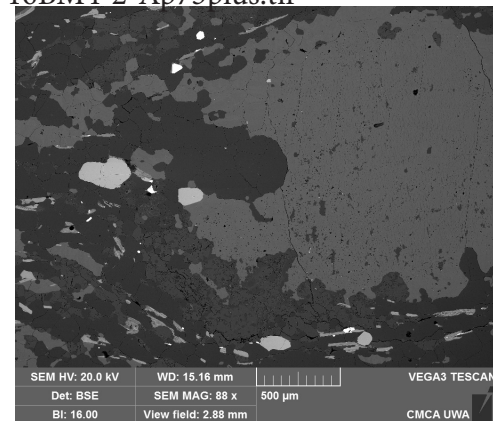
16BM4-2-Ap65plus.tif



16BM4-2-Ap70plus.tif



16BM4-2-Ap75plus.tif



16BM4-2

