

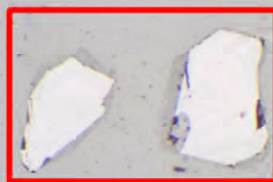


***Baddeleyite mount***

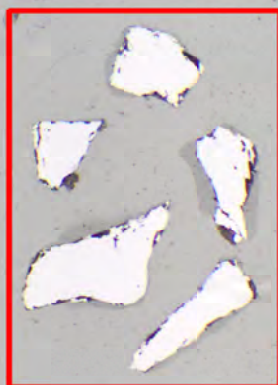
**G15-31**



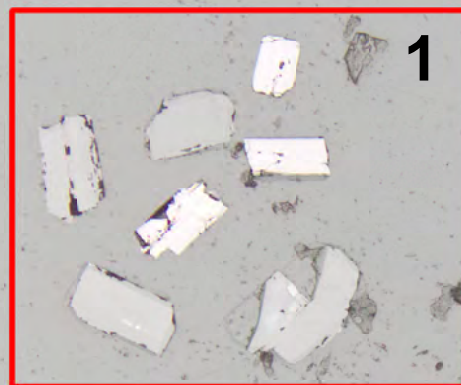
**SET038**



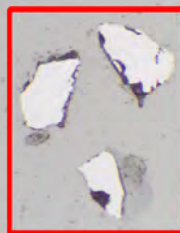
**TEM-A**



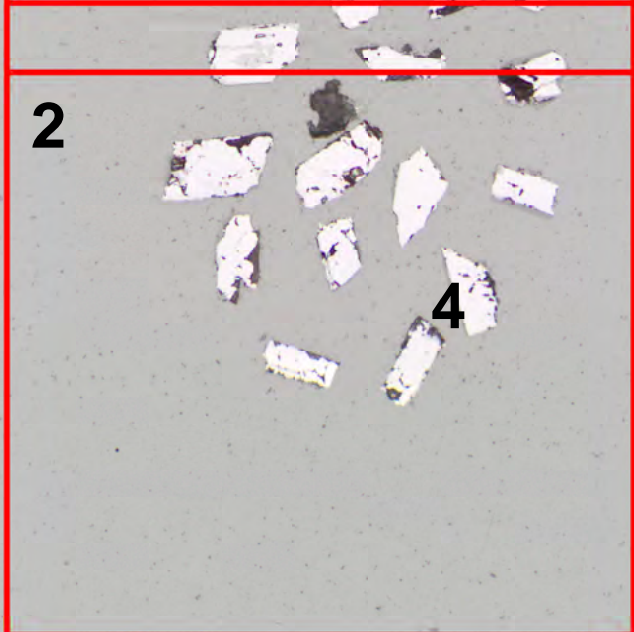
**PBR2-A**



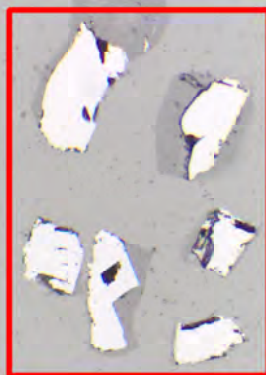
**206949**



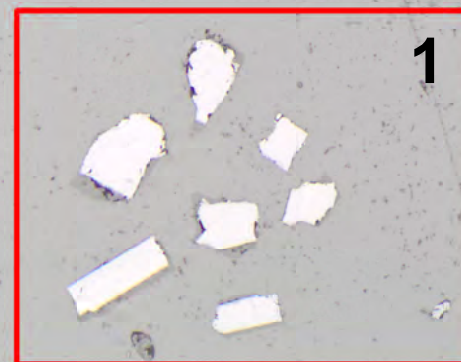
**CZ3**



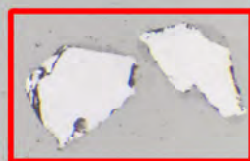
**205904**



**PBR2-B**



**207259**



**TEM-B**

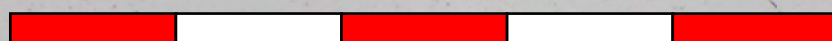
GS54, Wingate: leucogabbro, ROCKLEA - magmatic, 2800 Ma?

GS53, Johnson: gabbro, WYLOO - magmatic, 755, 1070, or 1500 Ma?

GS49, Blay: dolerite, THREE RIVERS - magmatic, 1465 Ma?

**G15-31**

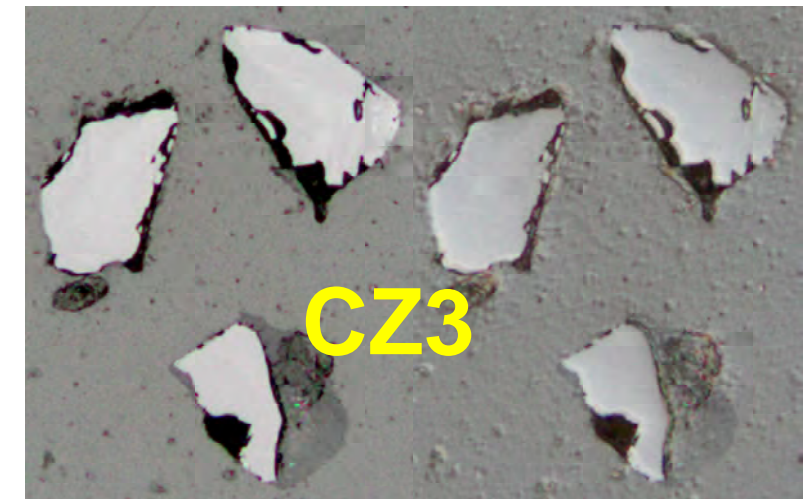
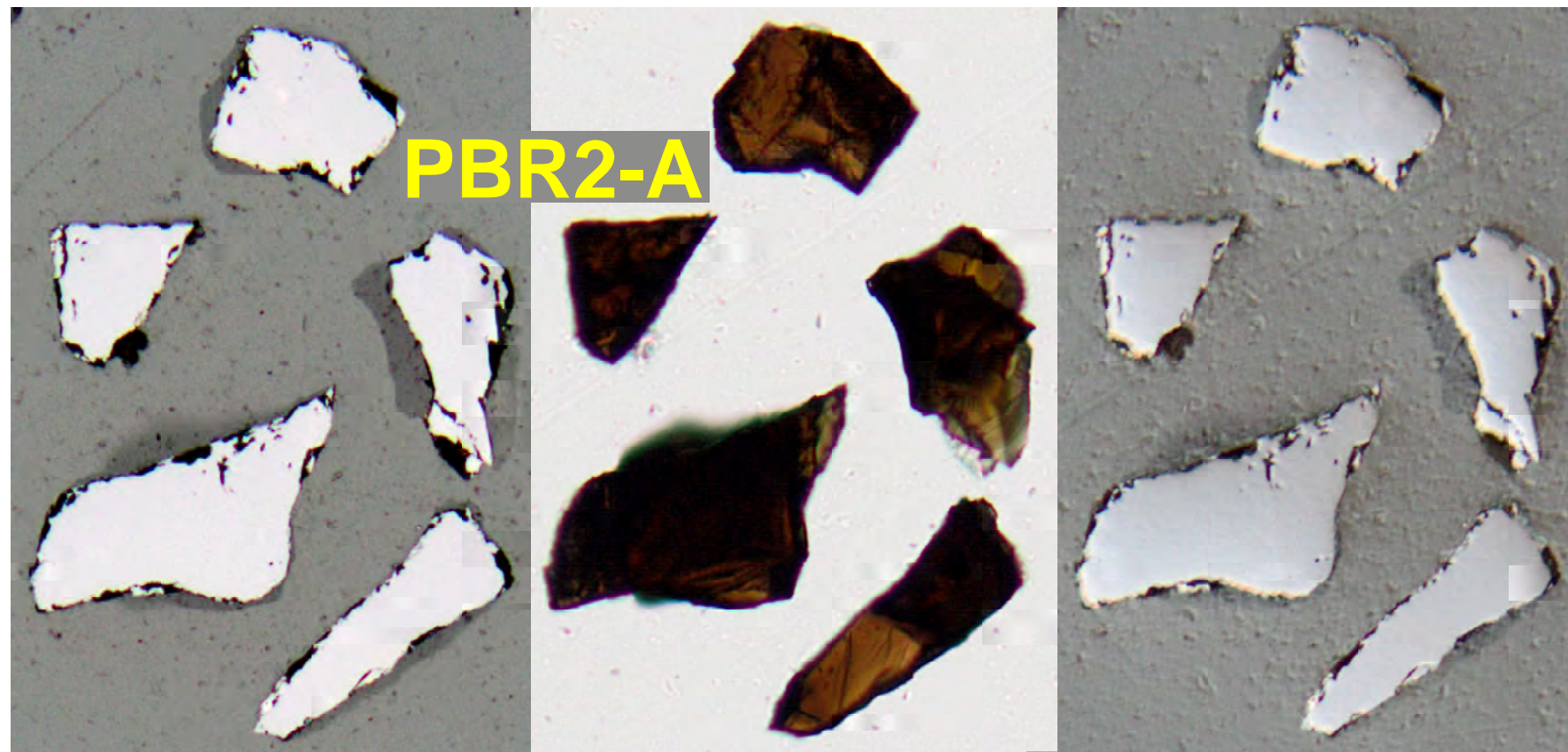
1 mm



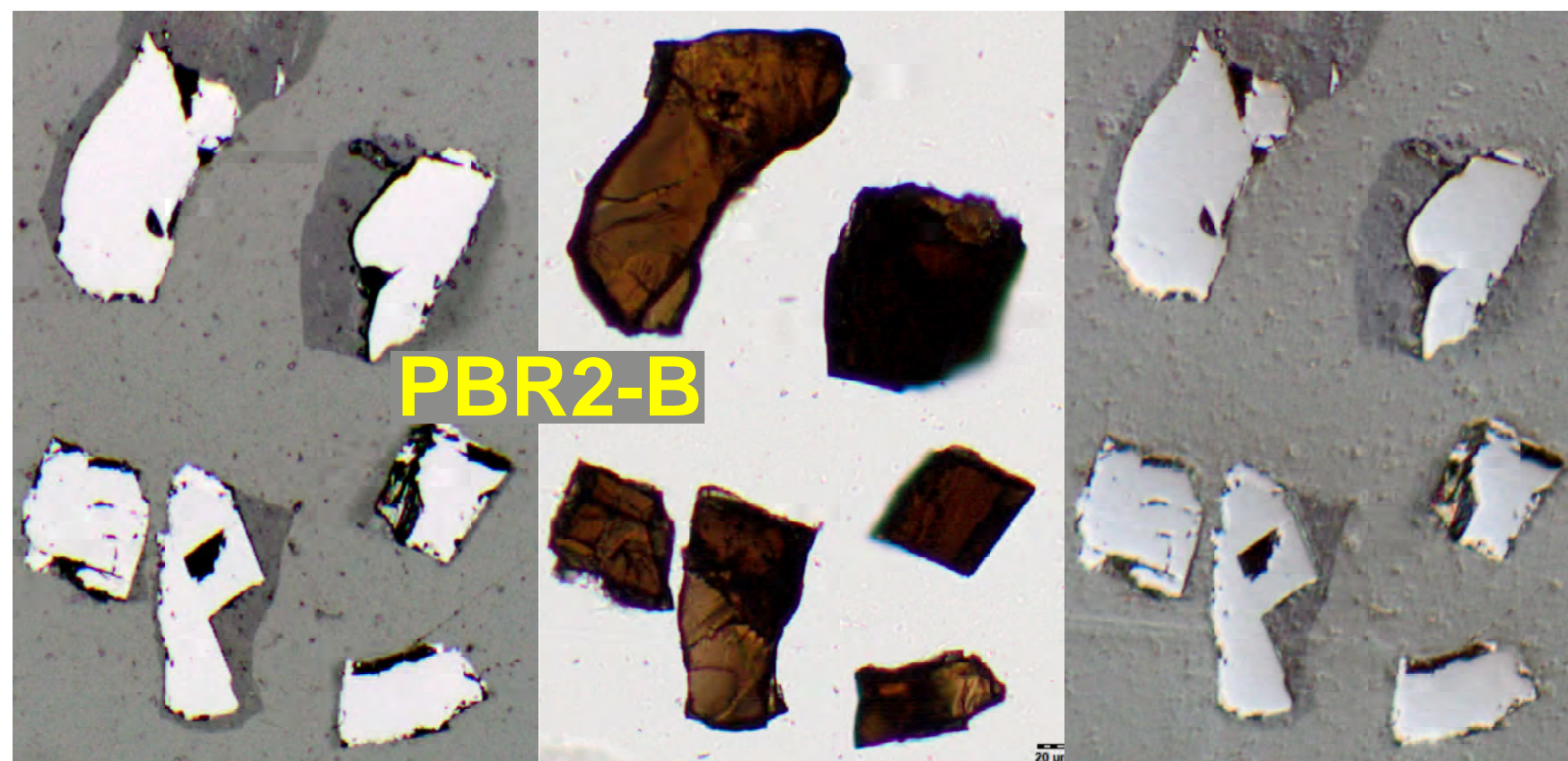
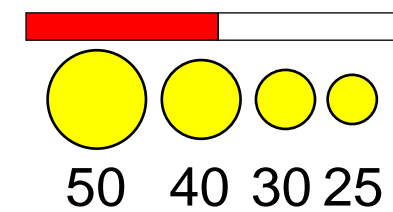
200  $\mu$ m



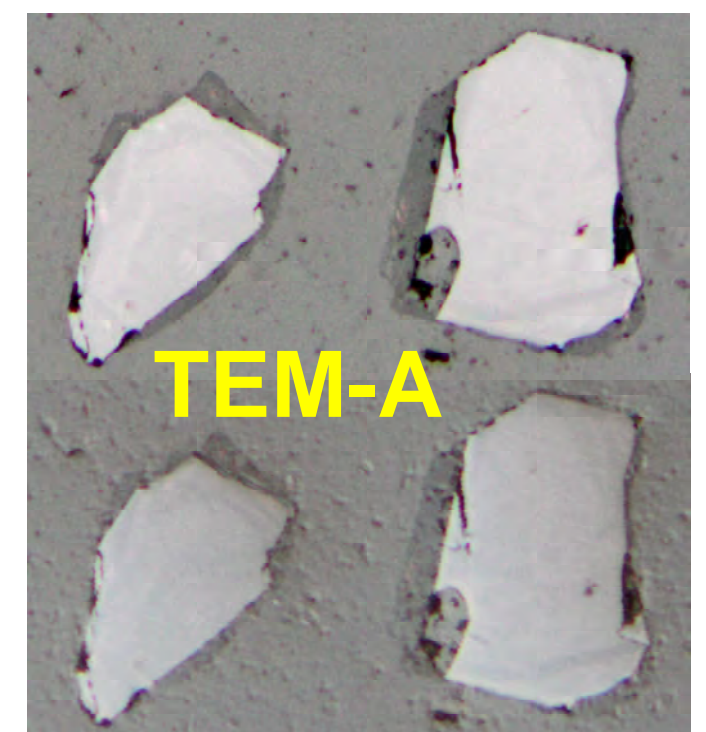
[G15-31] 205904BADD\_206949BADD\_207259BADD



200  $\mu\text{m}$



SETUP-038



[G15-31] 205904BADD\_206949BADD\_207259BADD