

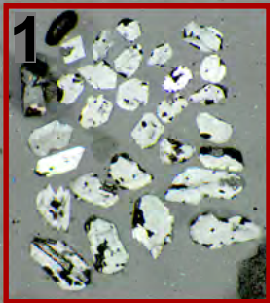
G14-39



SET038

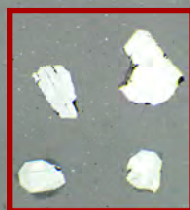


BRA

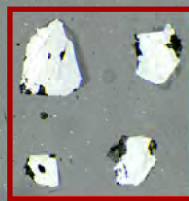


206949

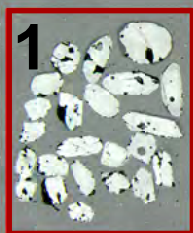
GS53, Blay: gabbro, WYLOO - magmatic, 755, 1070, or 1500 Ma?



TEM



CZ3

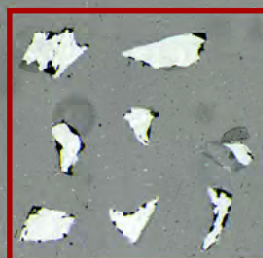


210699

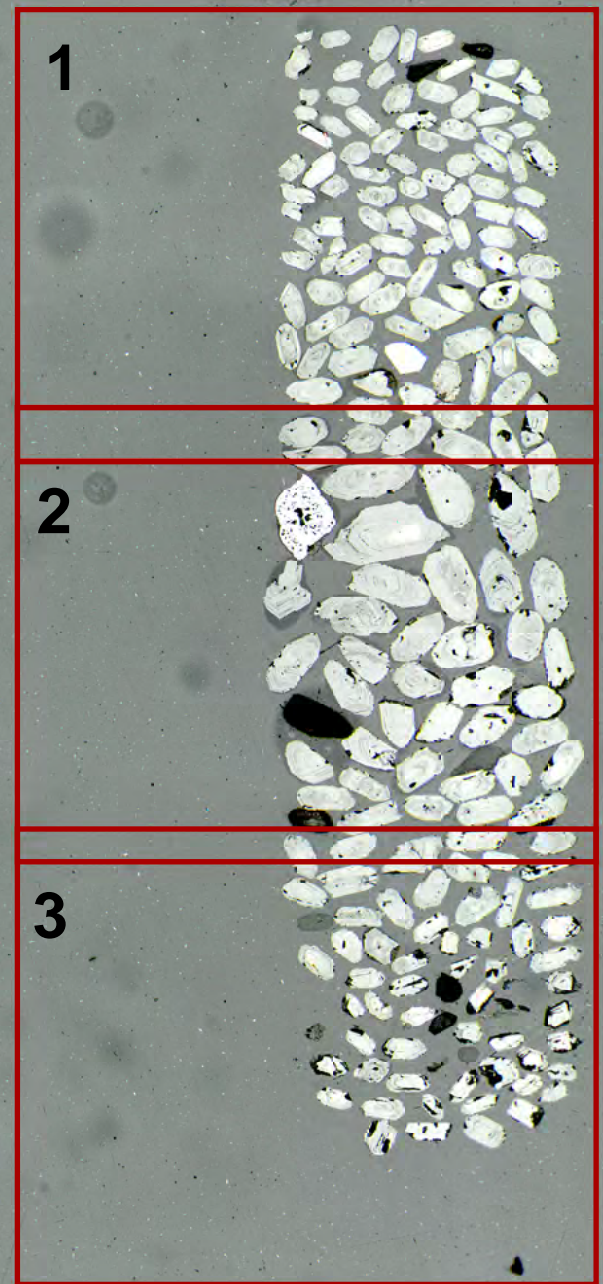
GS56, Hollis: schist, RICHENDA - detrital & metamorphic, c. 1850 & 535 Ma? Ma?



OGC



BRB

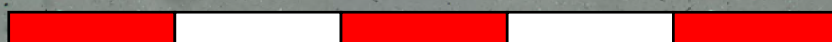


211101

GS58, Ivatic: volcanic siltstone, YALGOO - detrital, ~2735 Ma?

G14-39

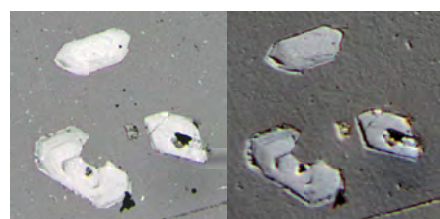
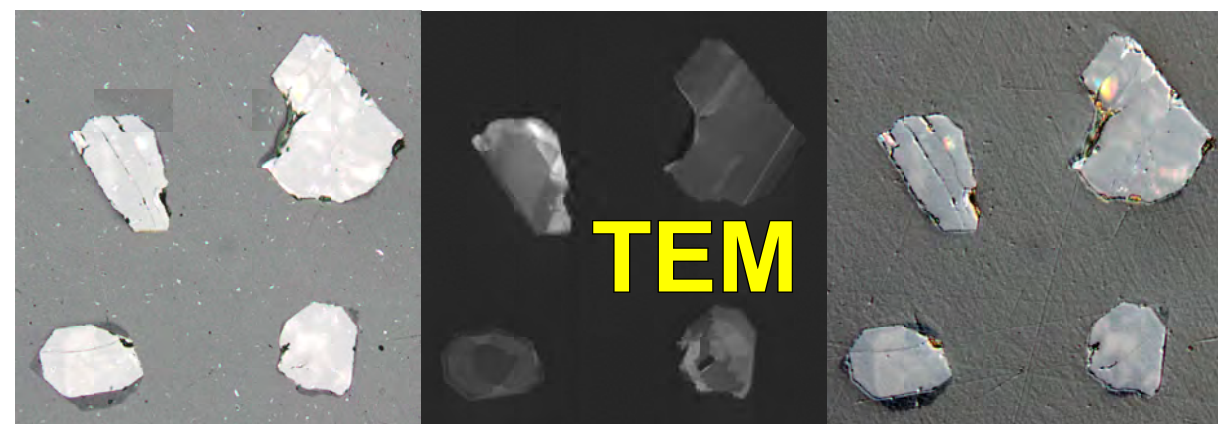
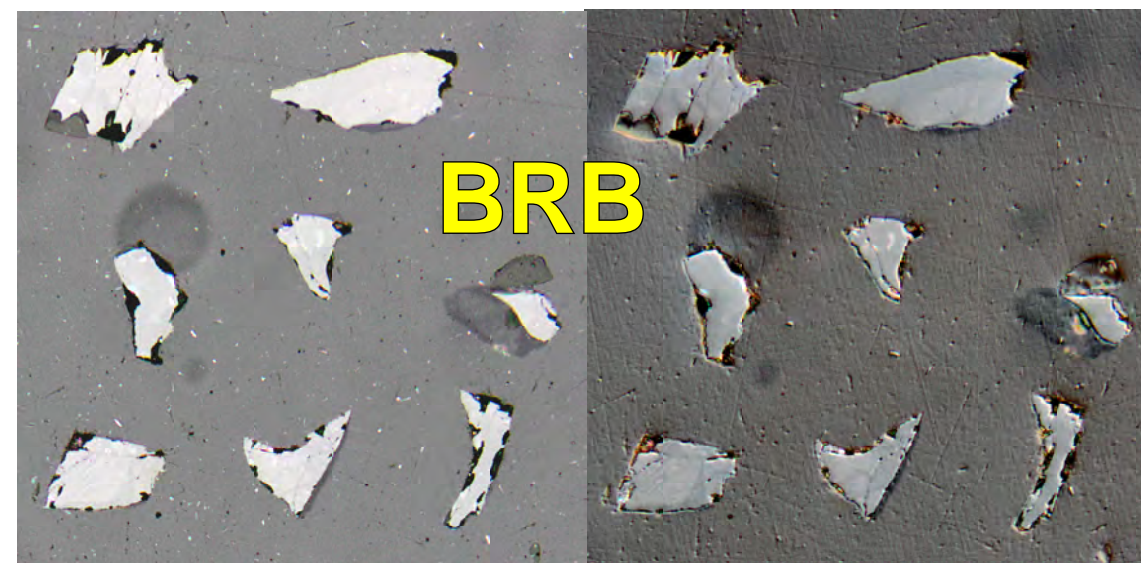
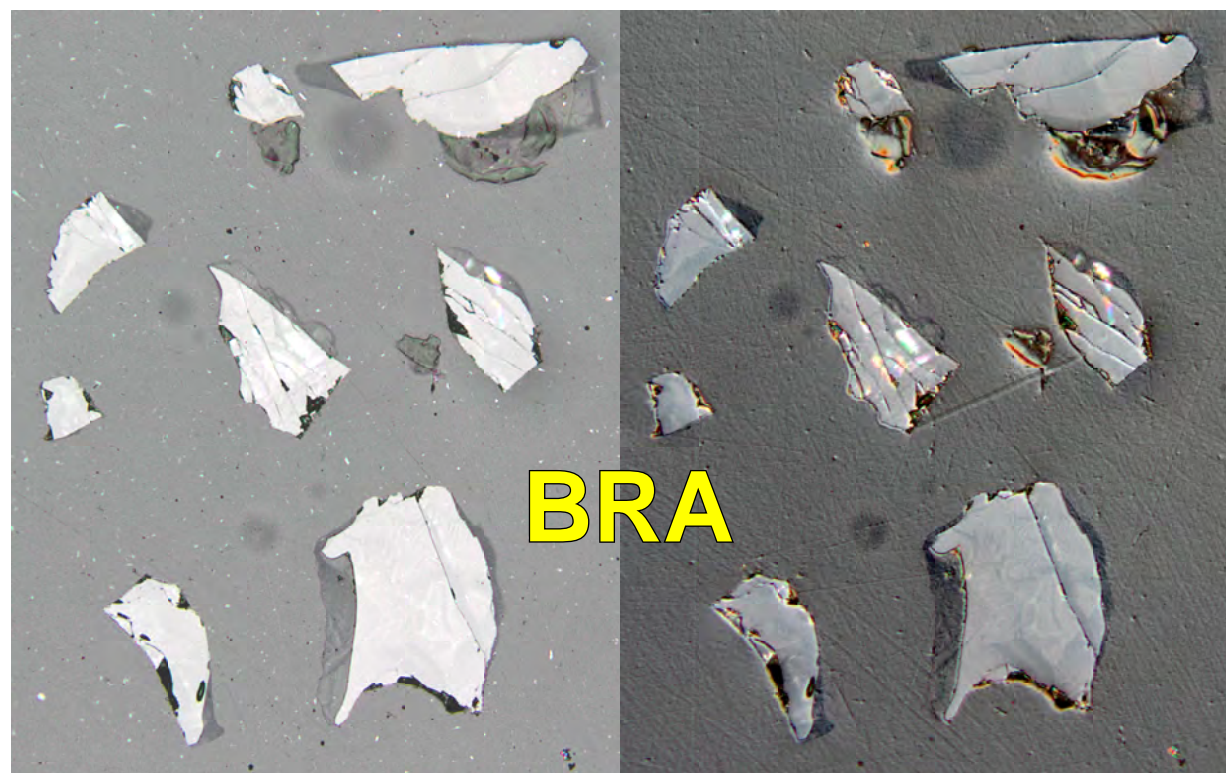
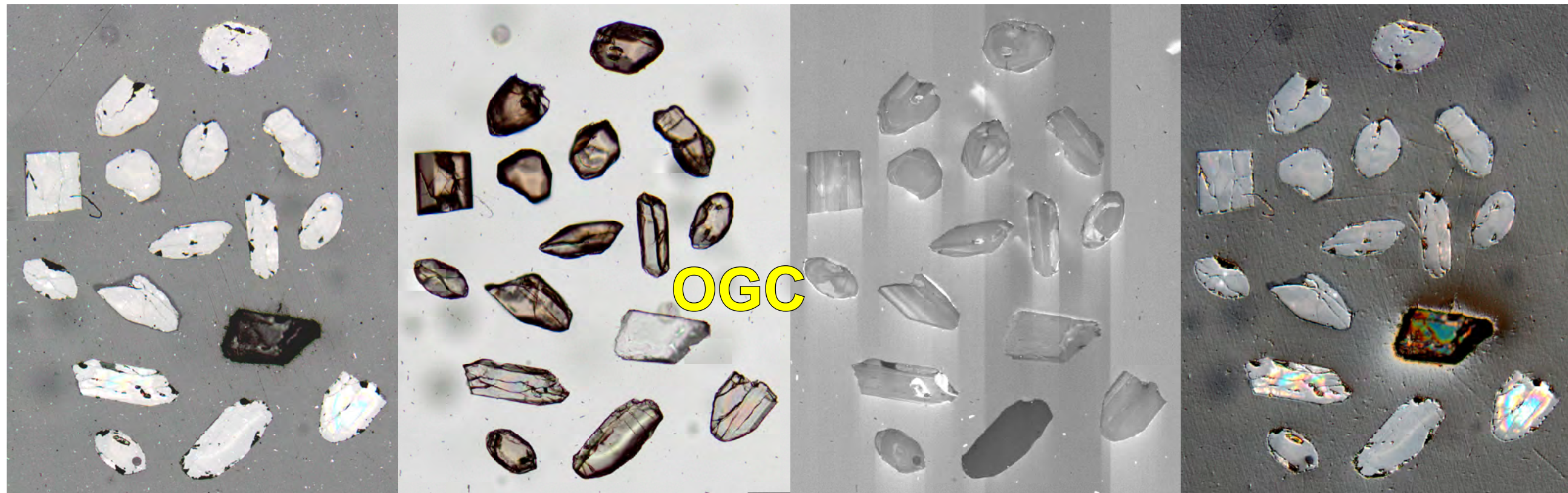
2 mm



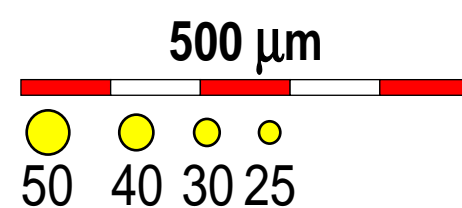
500 μ m



[G14-39] 206949_210699_211101



SETUP 038



[G14-39] 206949_210699_211101