

G08-3

Thorne: Flow banded; porphyritic; felsic volcanic rock; lower West Creek (Kiangi Creek) Formation (CALYIE)

149020



TEM-B



SETUP-A



TEM-A



CZ3



SETUP-B

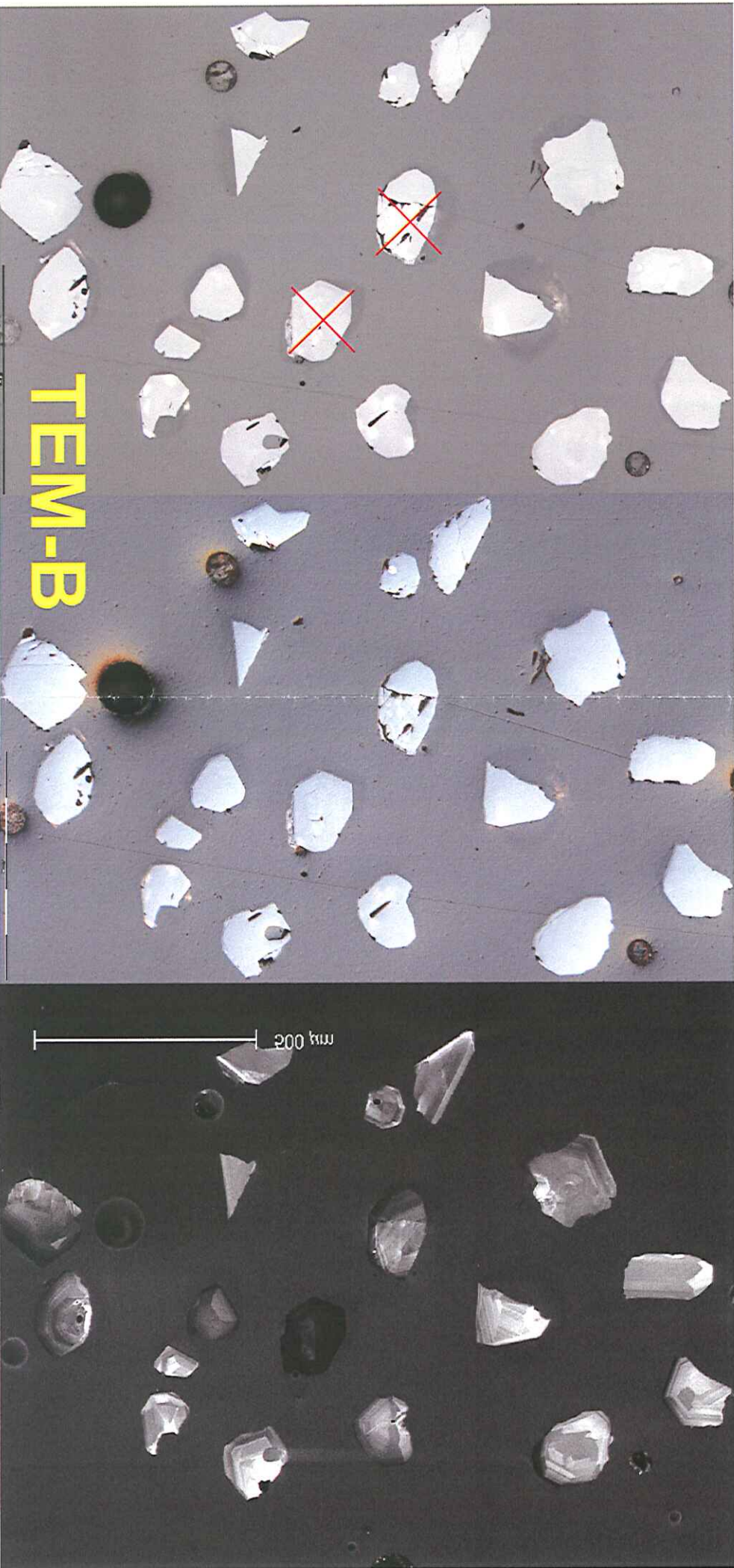
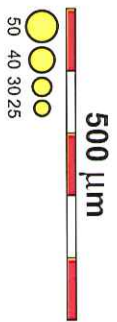
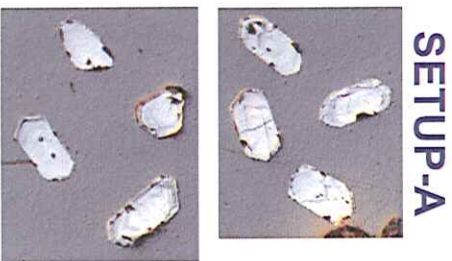
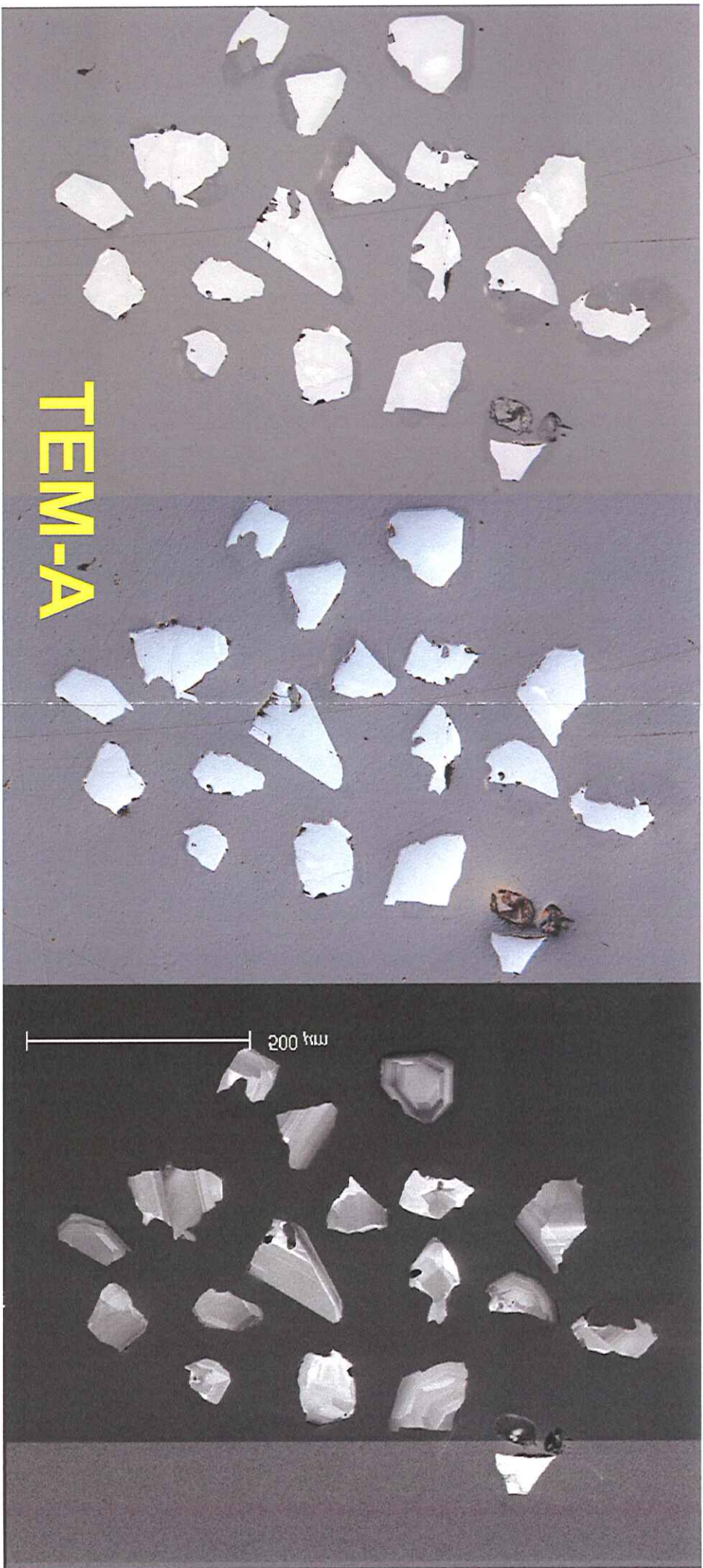
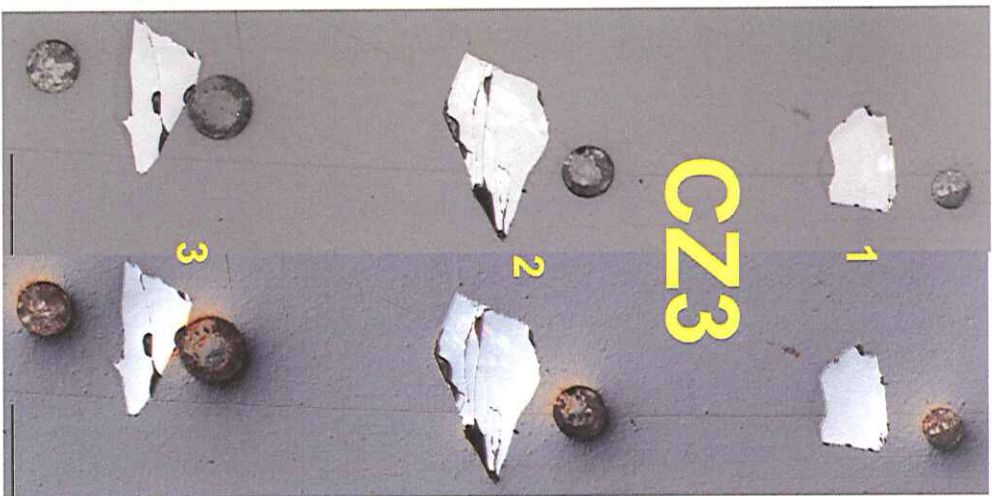


177278



Bagas: wacke - detrital zircon - provenance spectrum (WATTS)



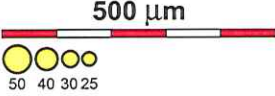
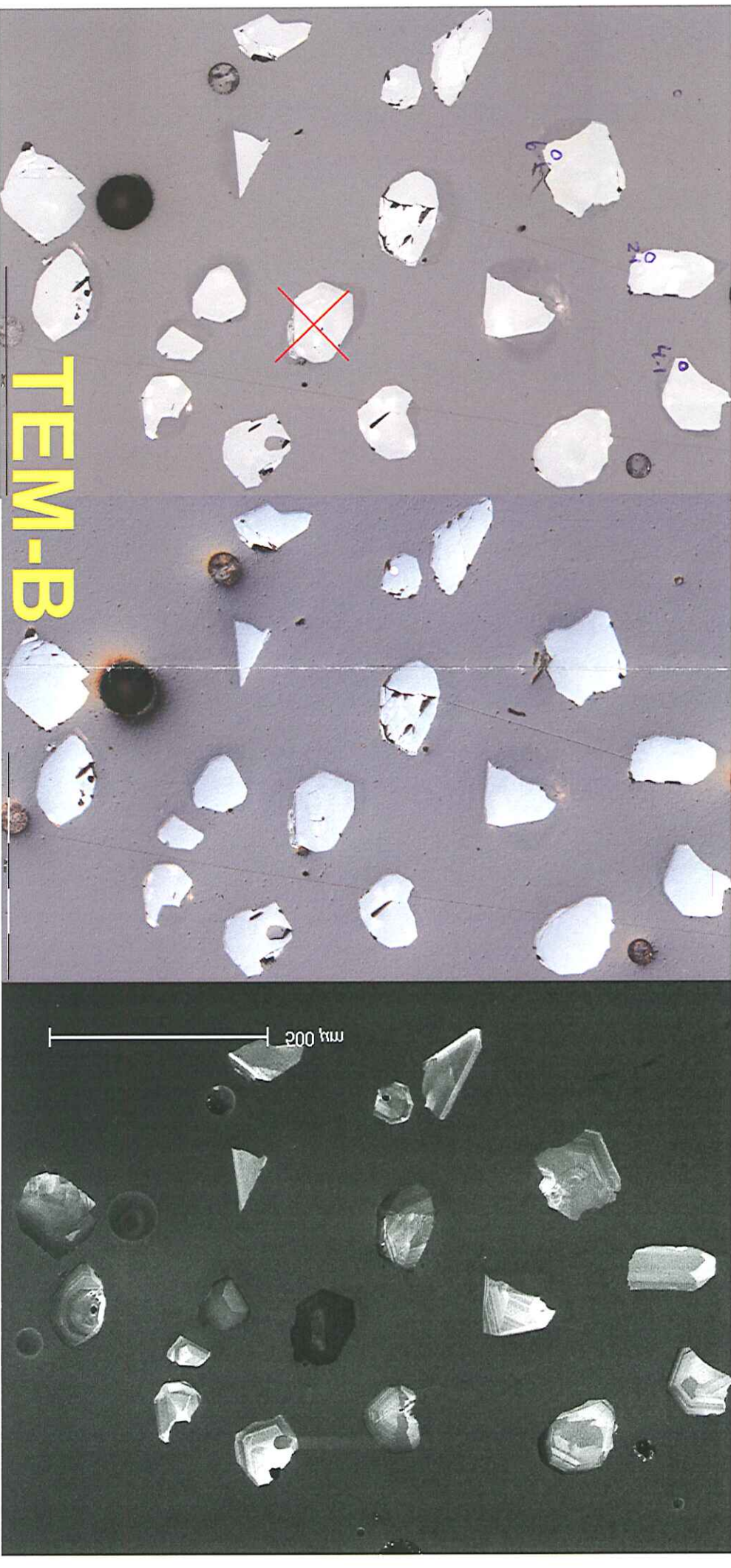
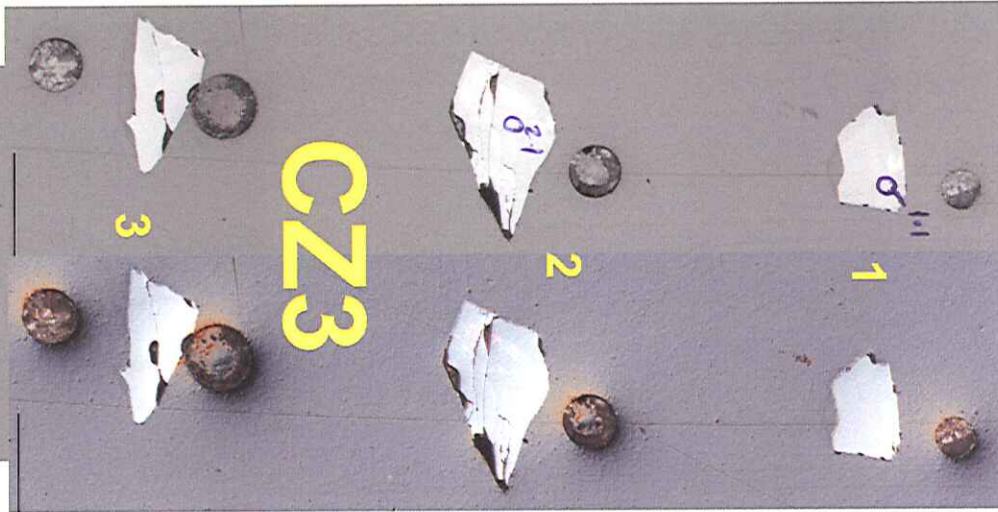
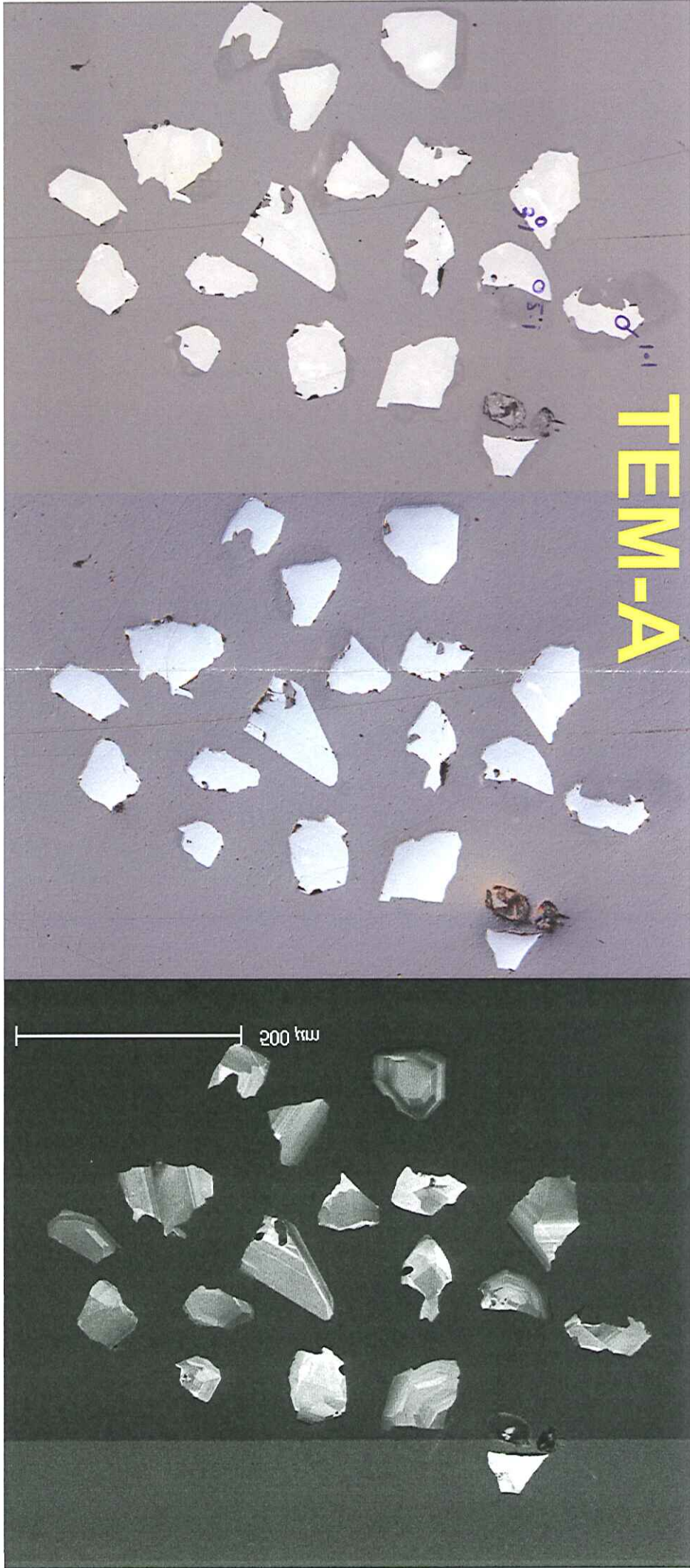


[G08-3] 149020_177278

↑ [G08-3] 149020_177278



[G08-3] 149020_177278



[G08-3] 149020_177278

G08-3

Thorne: Flow banded; porphyritic; felsic volcanic rock; lower West Creek (Kiangi Creek) Formation (CALYIE)

149020



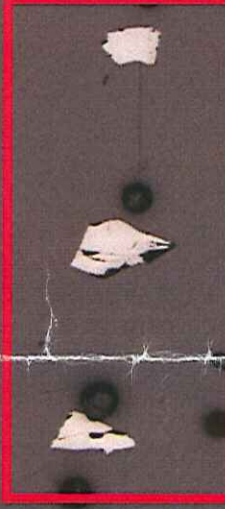
SETUP-A



TEM-B



CZ3



TEM-A



SETUP-B



177278



Bagas: wacke - detrital zircon - provenance spectrum (WATTS)



150x

70x

130x

CL 14/1/08