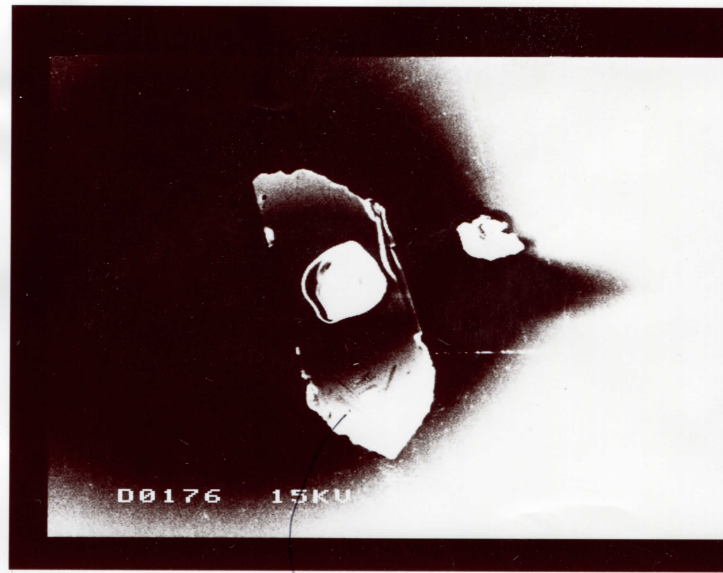
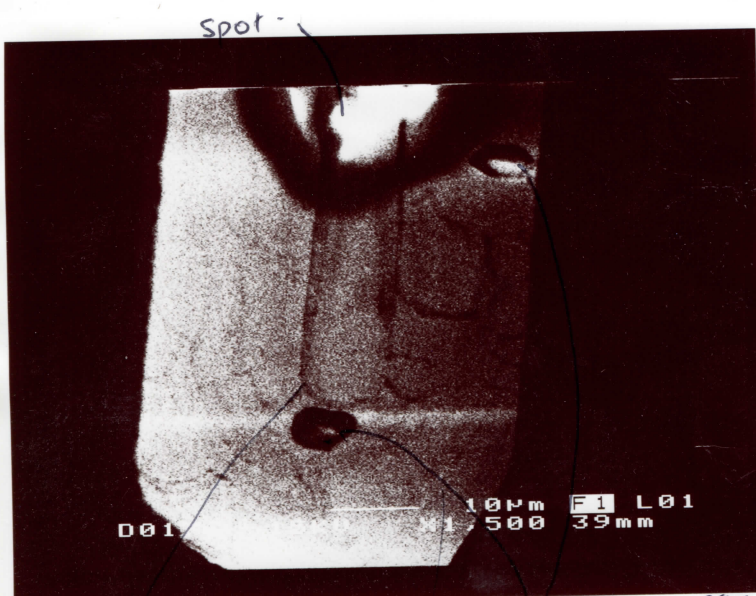


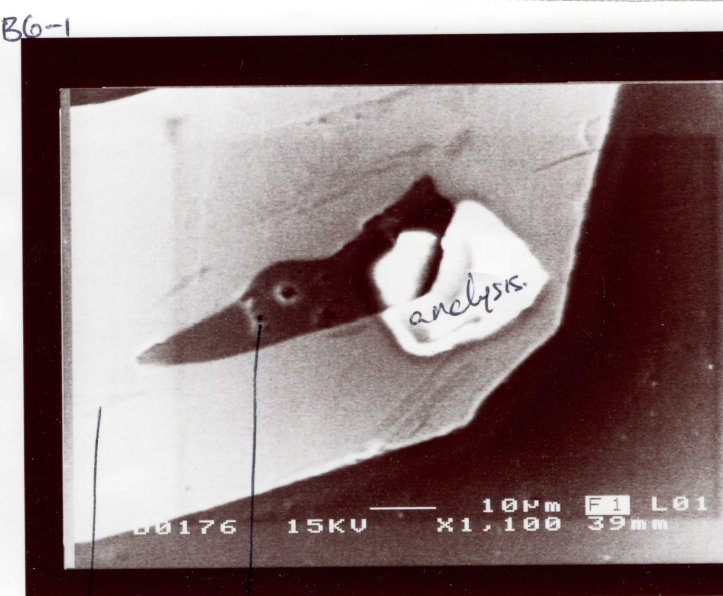
A1-1. BCE  
*spot* *inclusion*  
*metamict growths?*



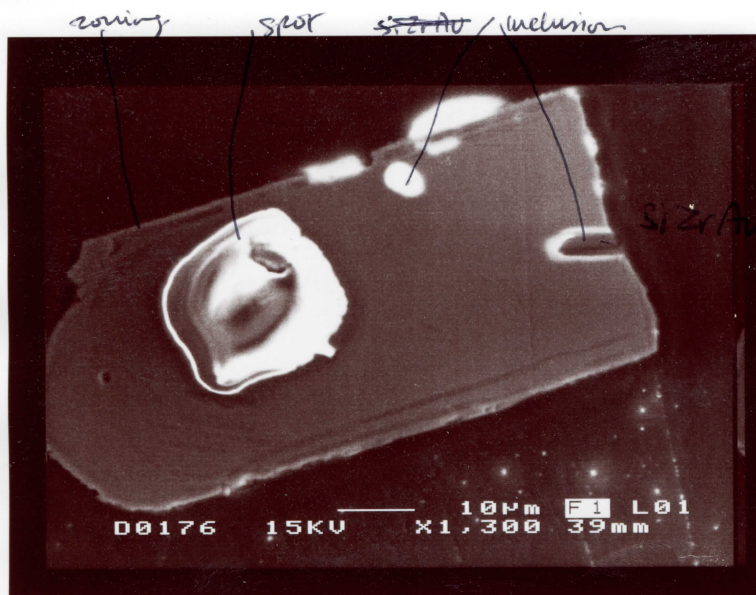
A1-1 SEI  
*zones.*



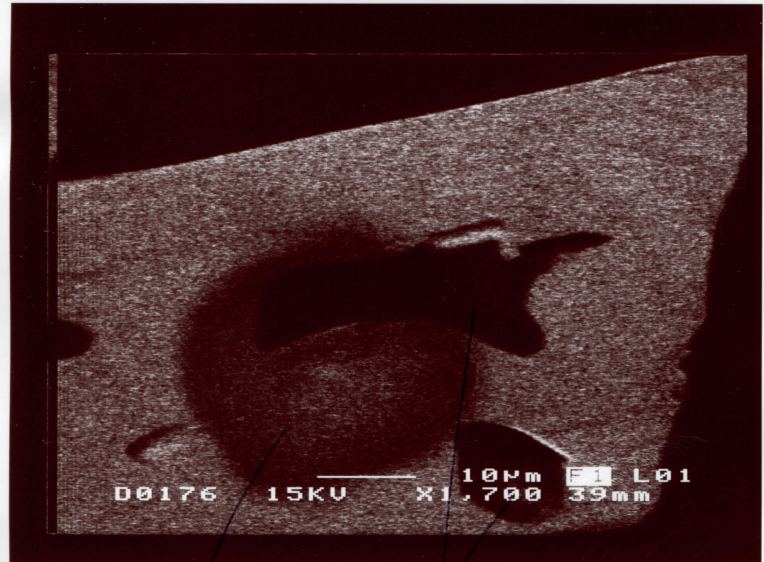
A2-1 BSE  
*spot*  
*lateral fracture* *spot zoning?* *inclusion - s. apatite? Si, P, Zr*



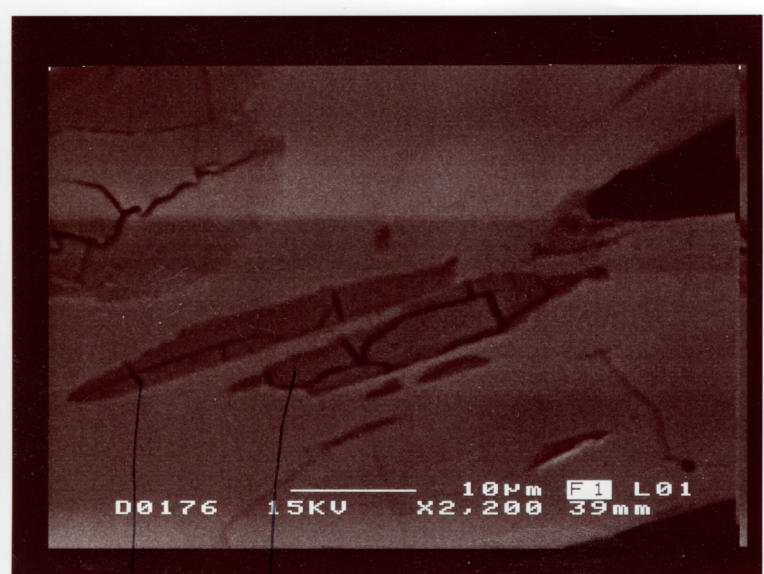
B6-1  
*metamict growths? incl?* *inclusion with sulphide. Si, Zn, Al, Zr.*



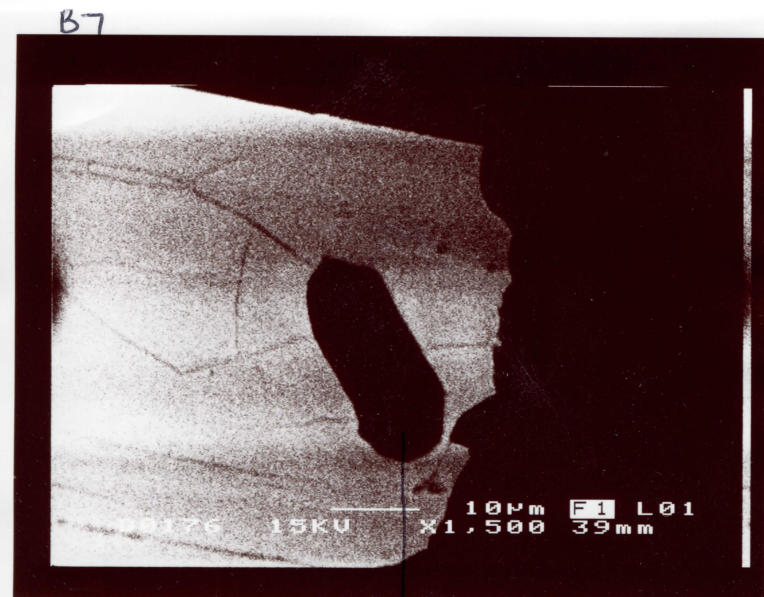
A1-1. SEI.  
*zoning* *spot* *inclusion* *Si, Zr, Al*



A3-1  
spot  
inclusion  
BSE



B6  
cracks; comp Zr, Si ± Pb, Pd  
BSE



B7  
inclusion  
along fractures: Al, K, Si? Zr, ~~...~~  
BSE