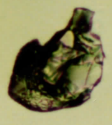
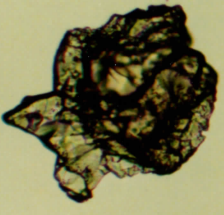
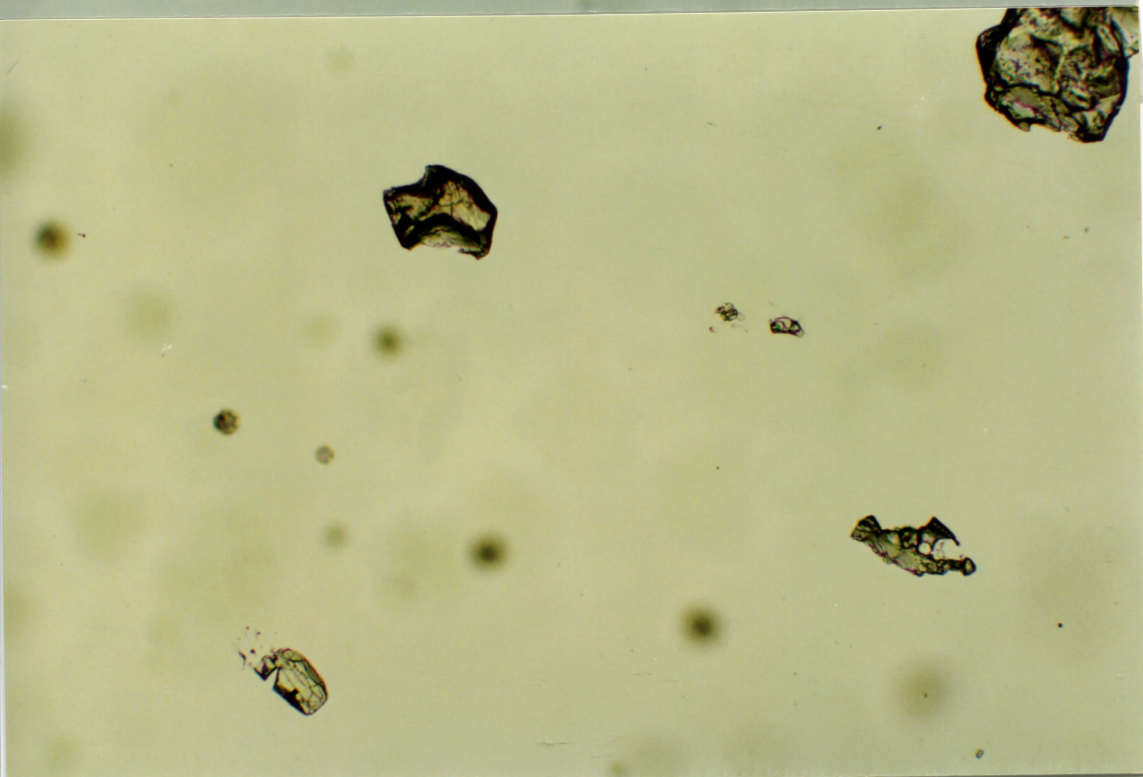
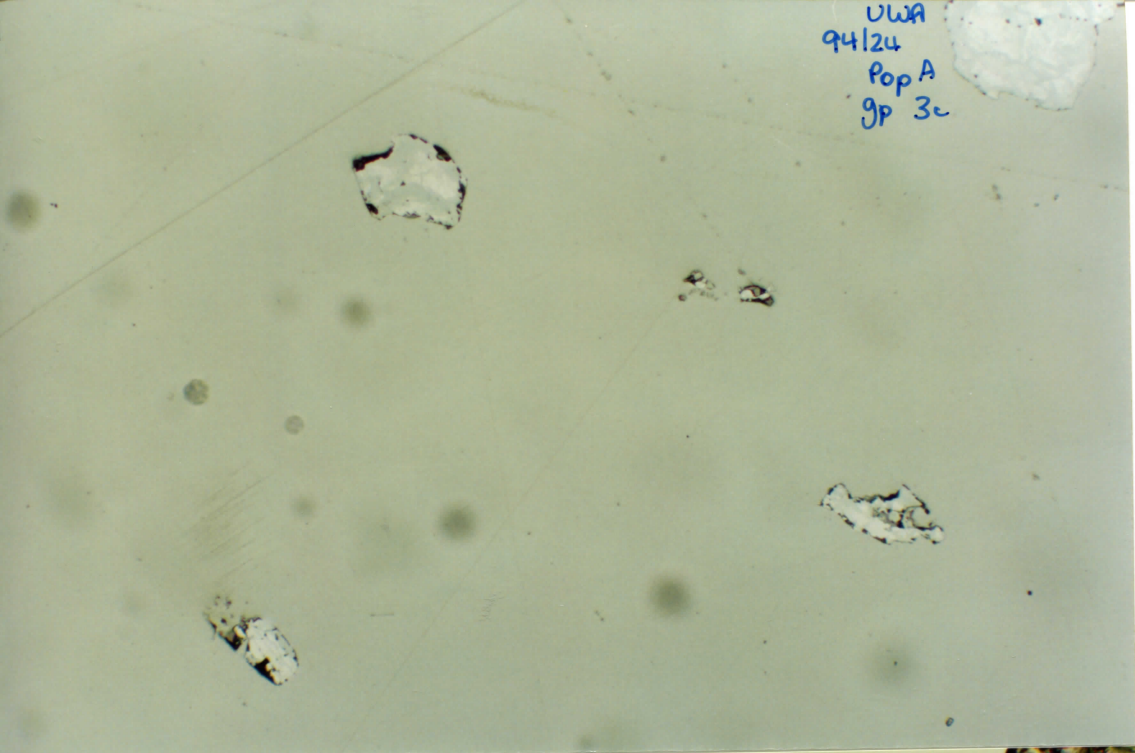


UWA 94/24
Pop A
9P 2c



DWA
94124
Pop A
9P 3c



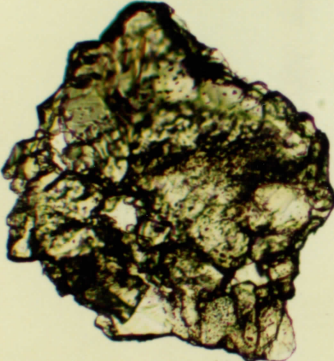
OWA 94/24

Pop A

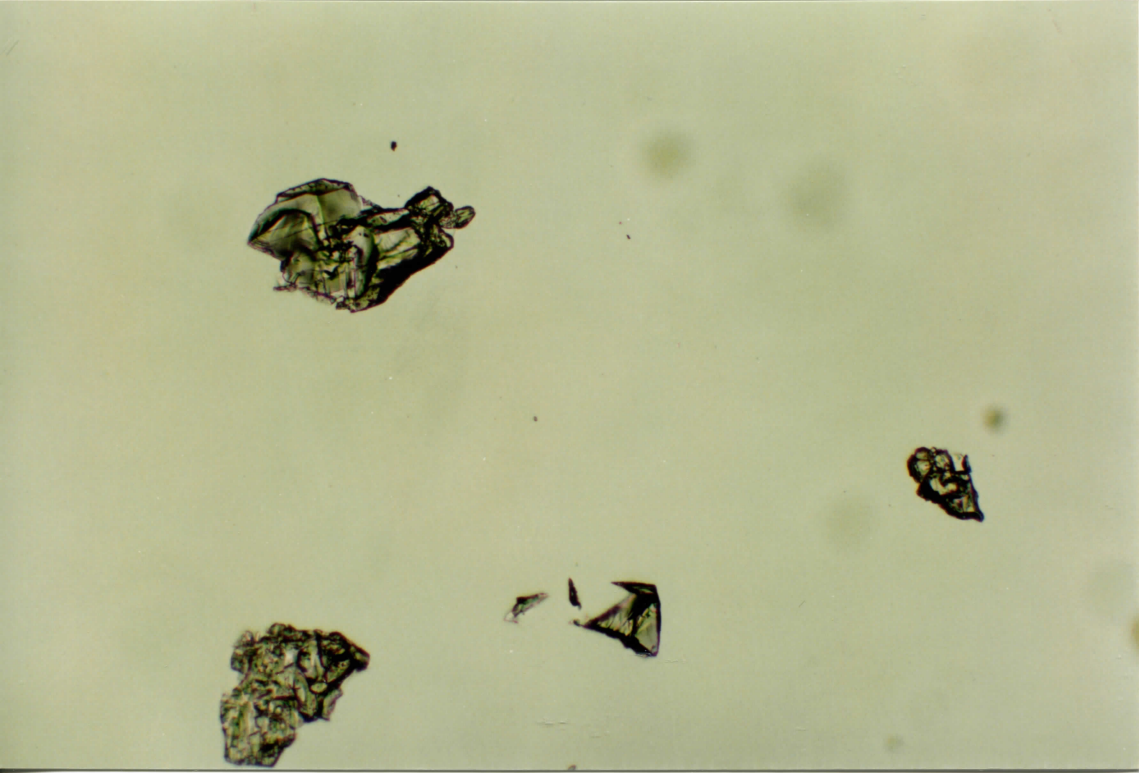
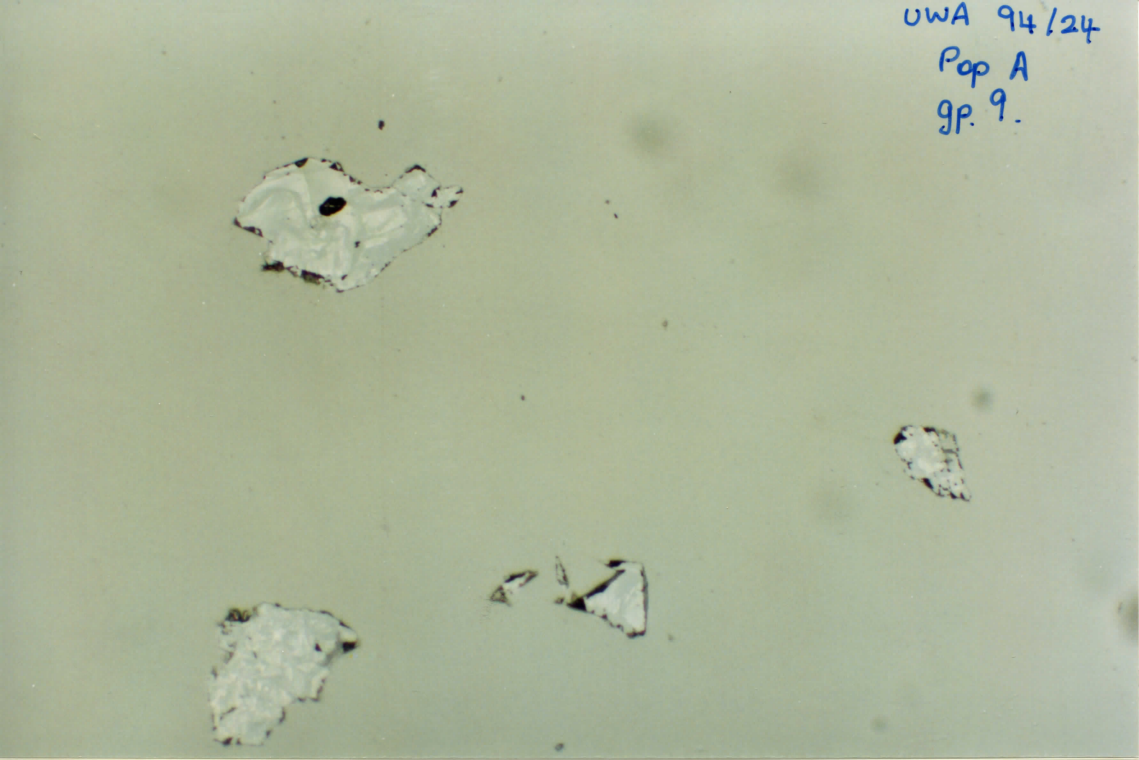
gp 4c

test
2/3/95

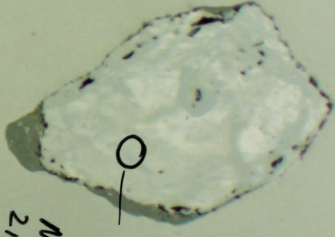
test
12/3/95



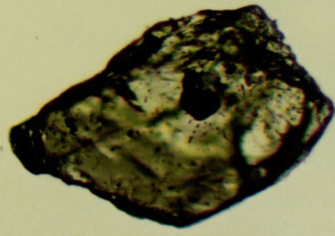
UWA 94/24
Pop A
gp. 9.



UWA 94/24
Pop A
gp 5c



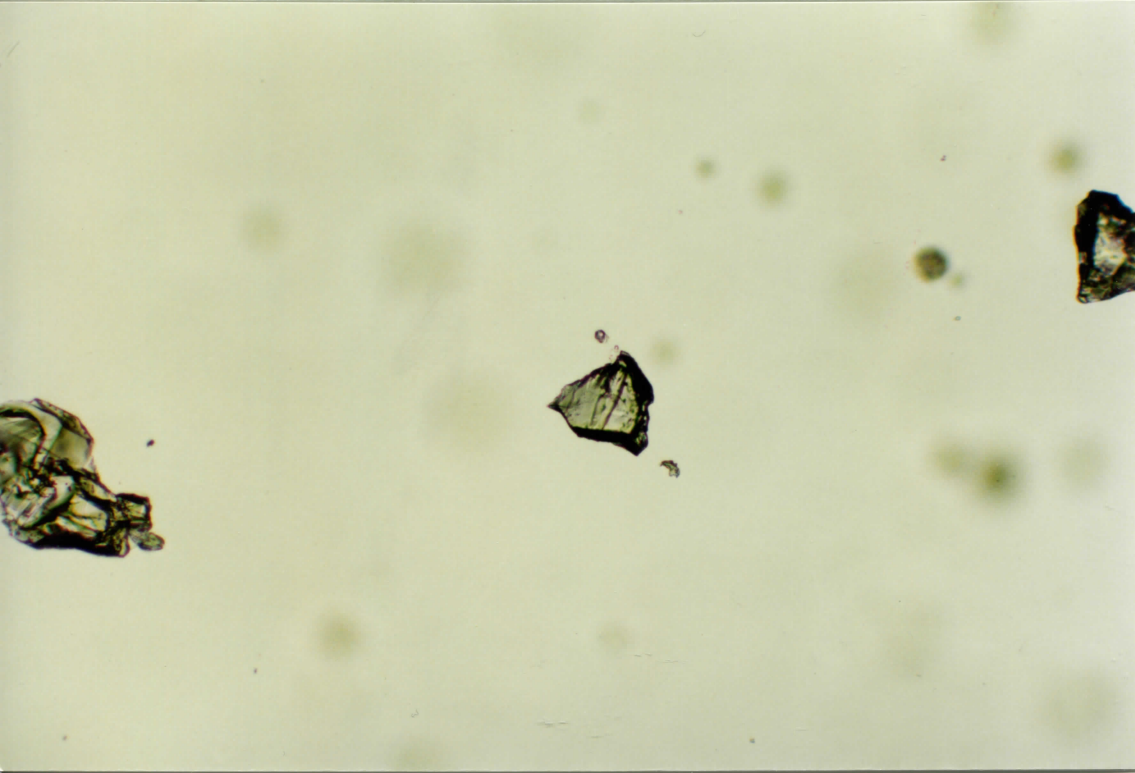
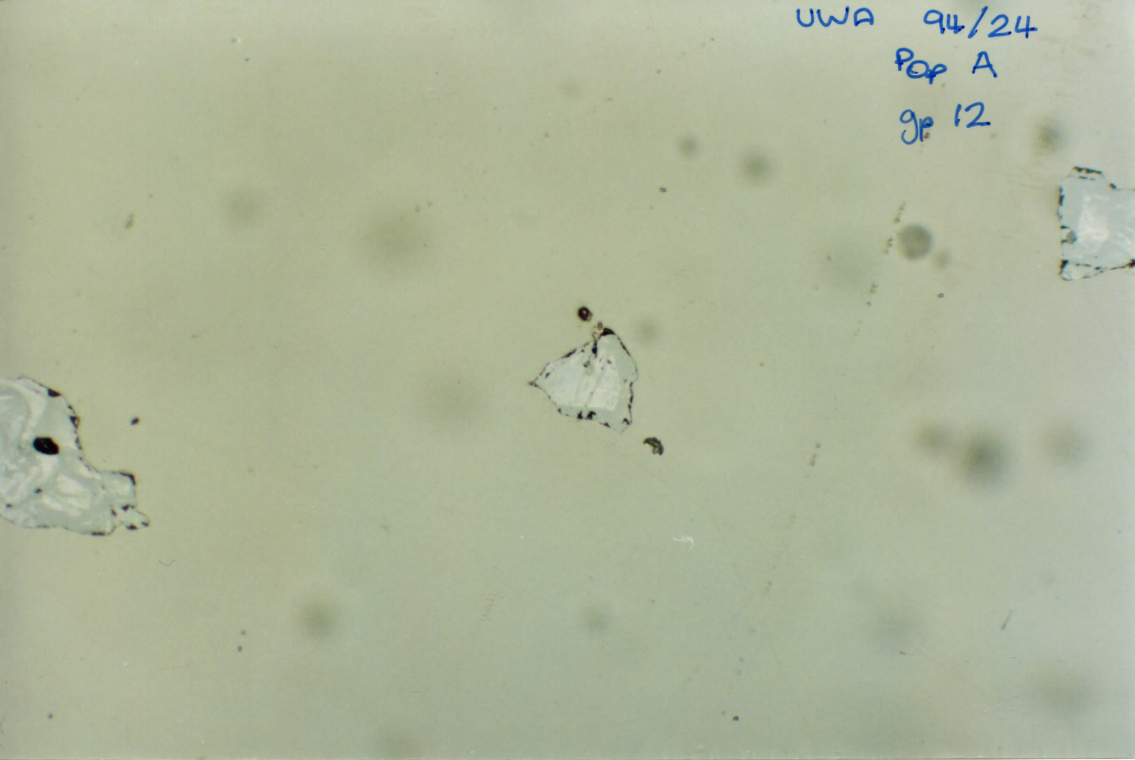
2-1
NOT
ZIRCON
↓
no
196
cts



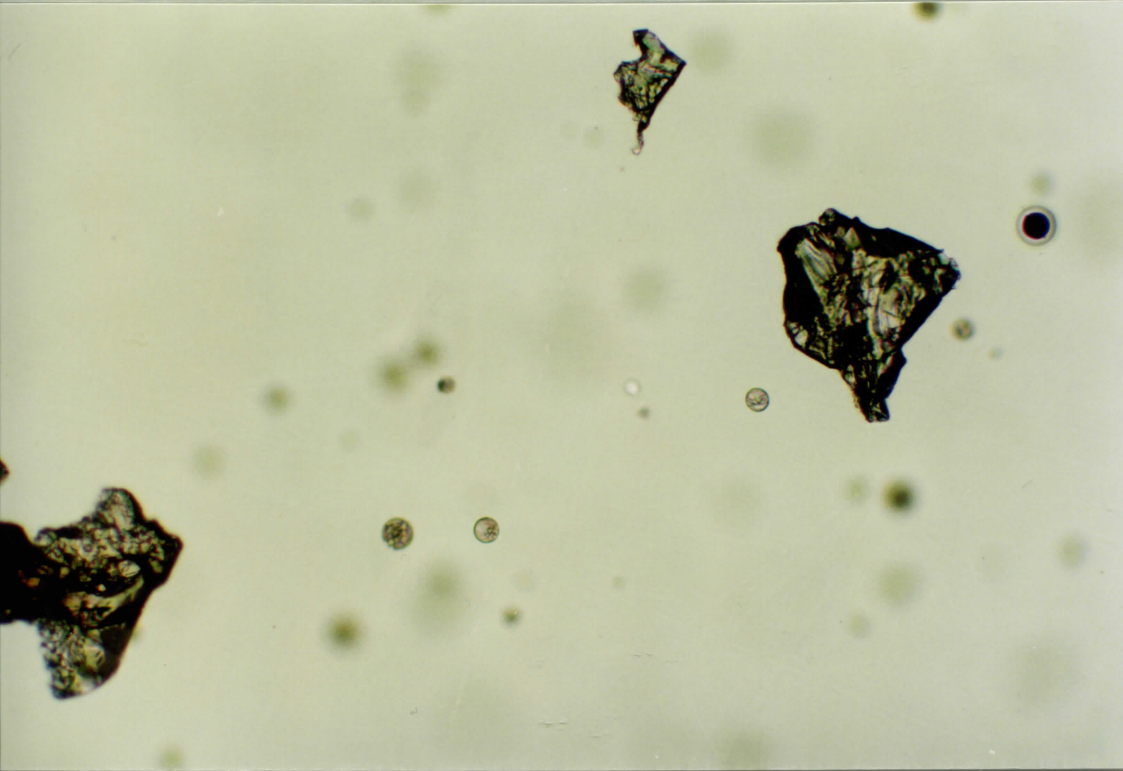
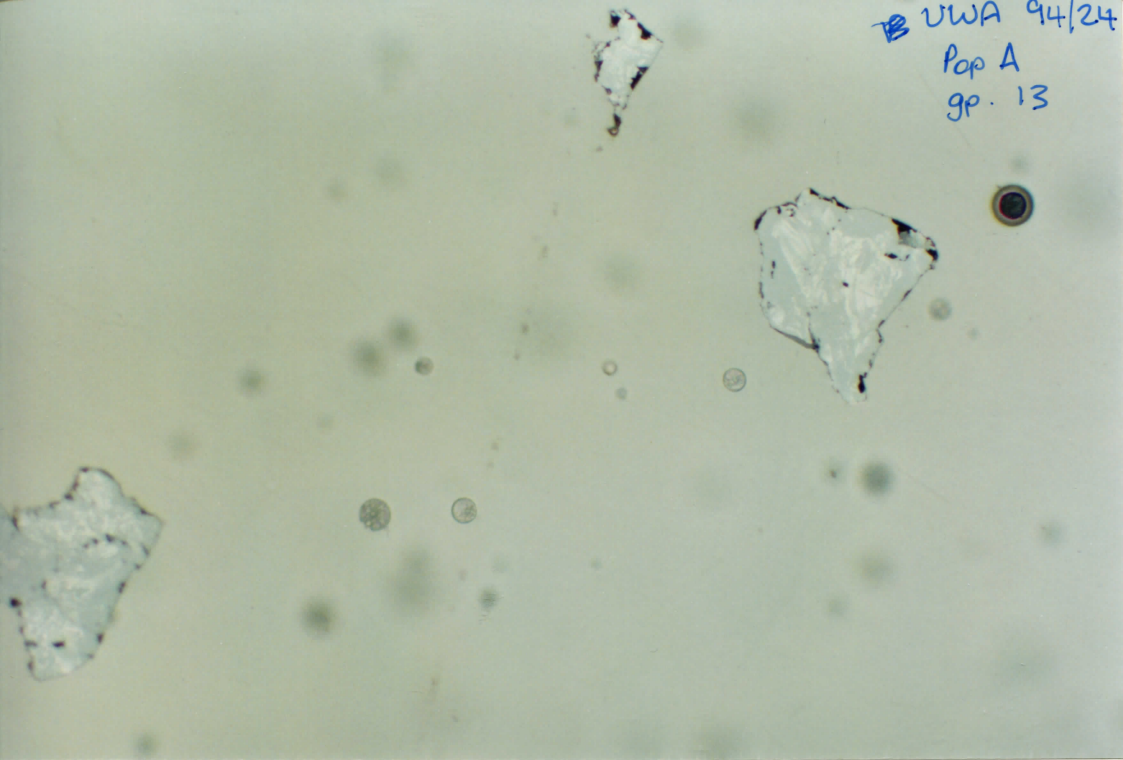
UWA 94/24

Pop A

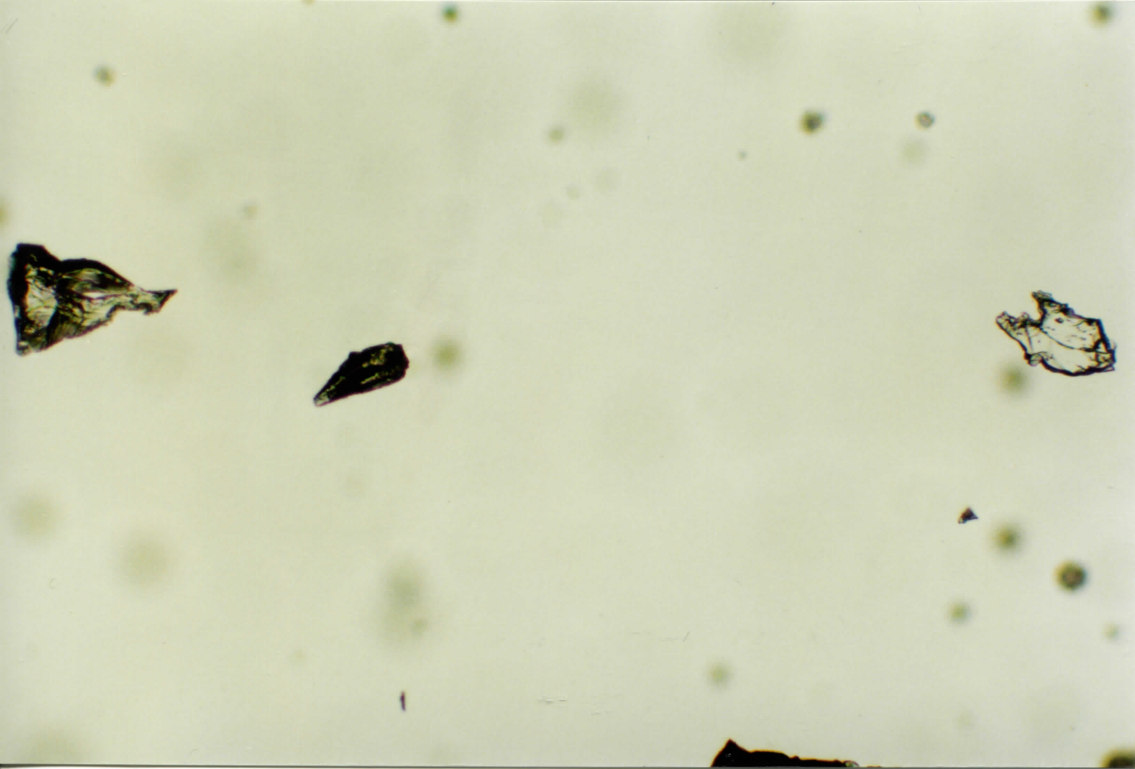
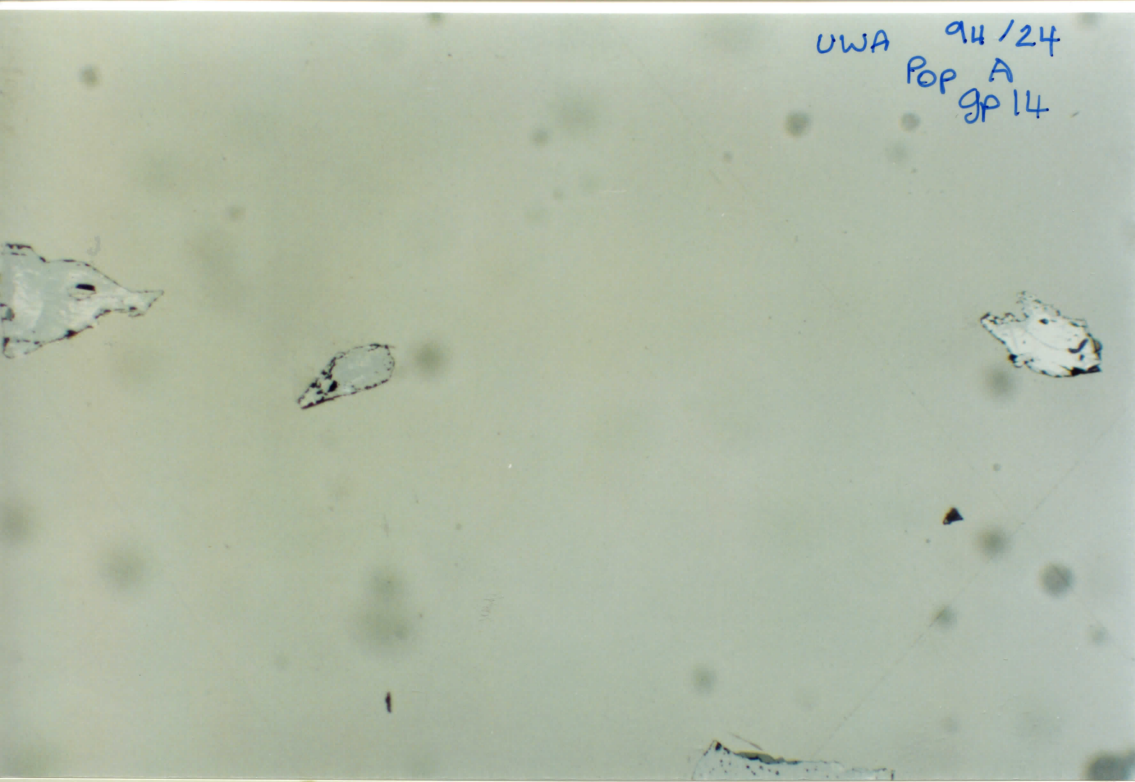
gp 12



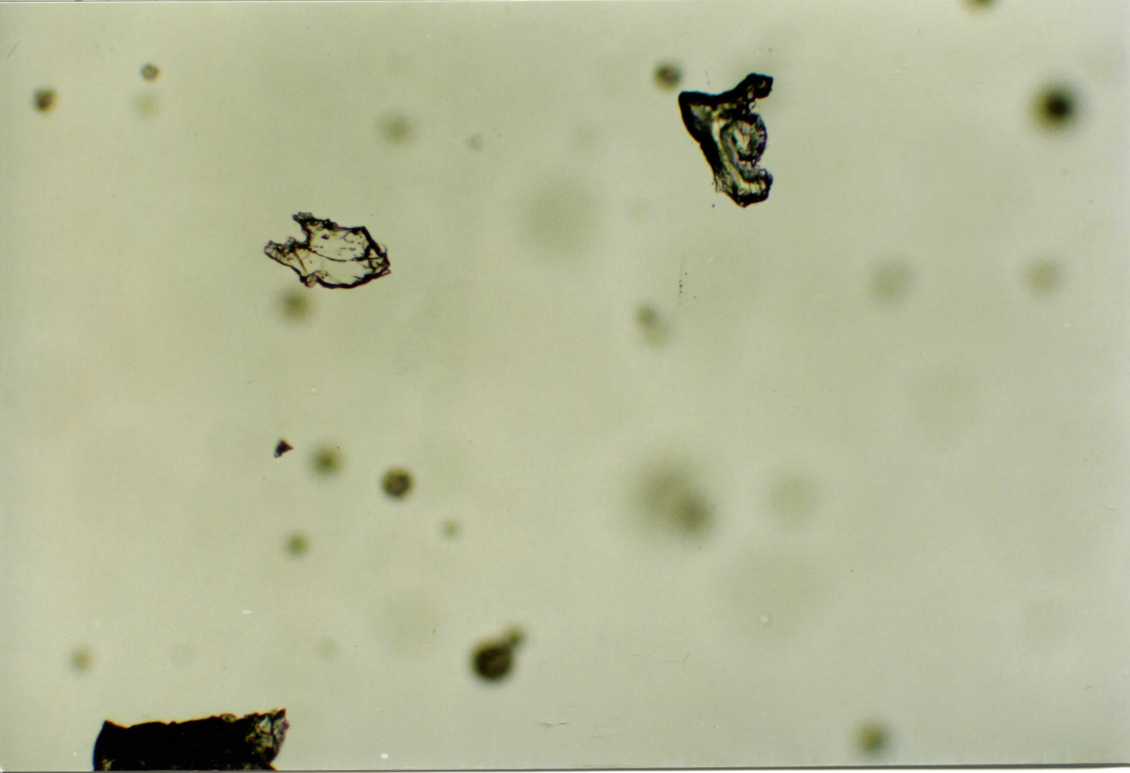
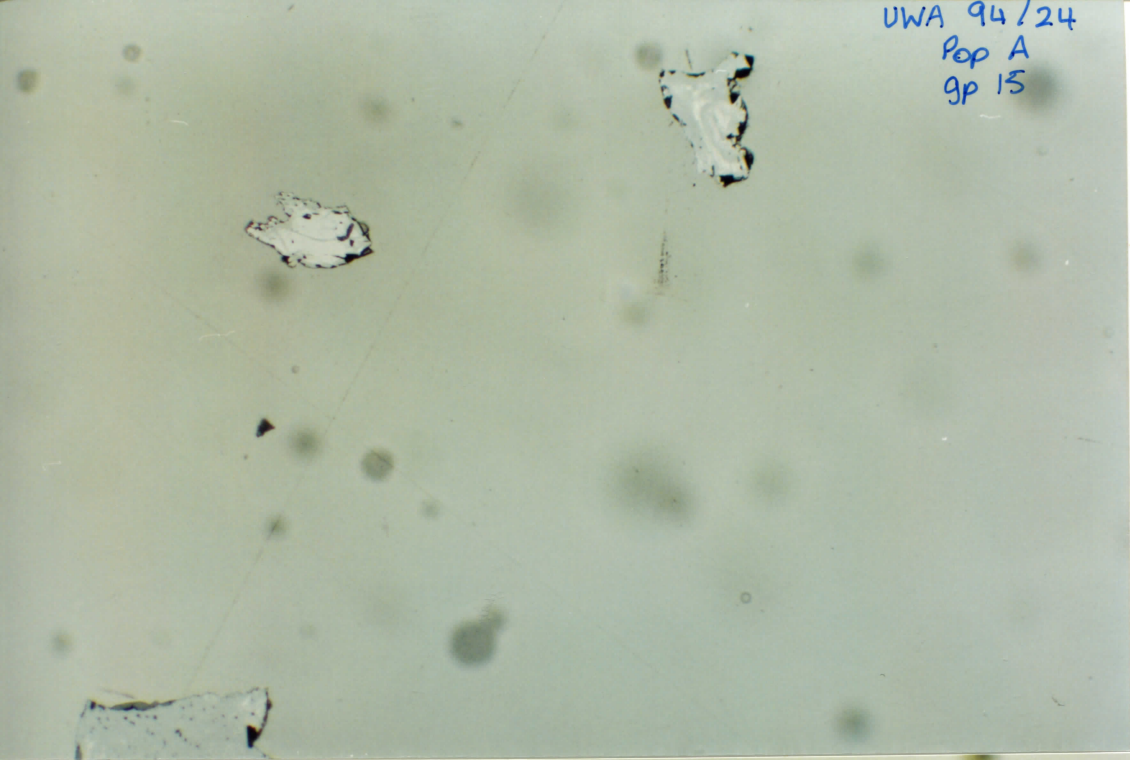
UWA 94/24
Pop A
gp. 13



UWA 94/24
Pop A
gp 14



UWA 94/24
Pop A
gp 15



UWA 94/24
Pop A
gp 17

