

UWA 94/29

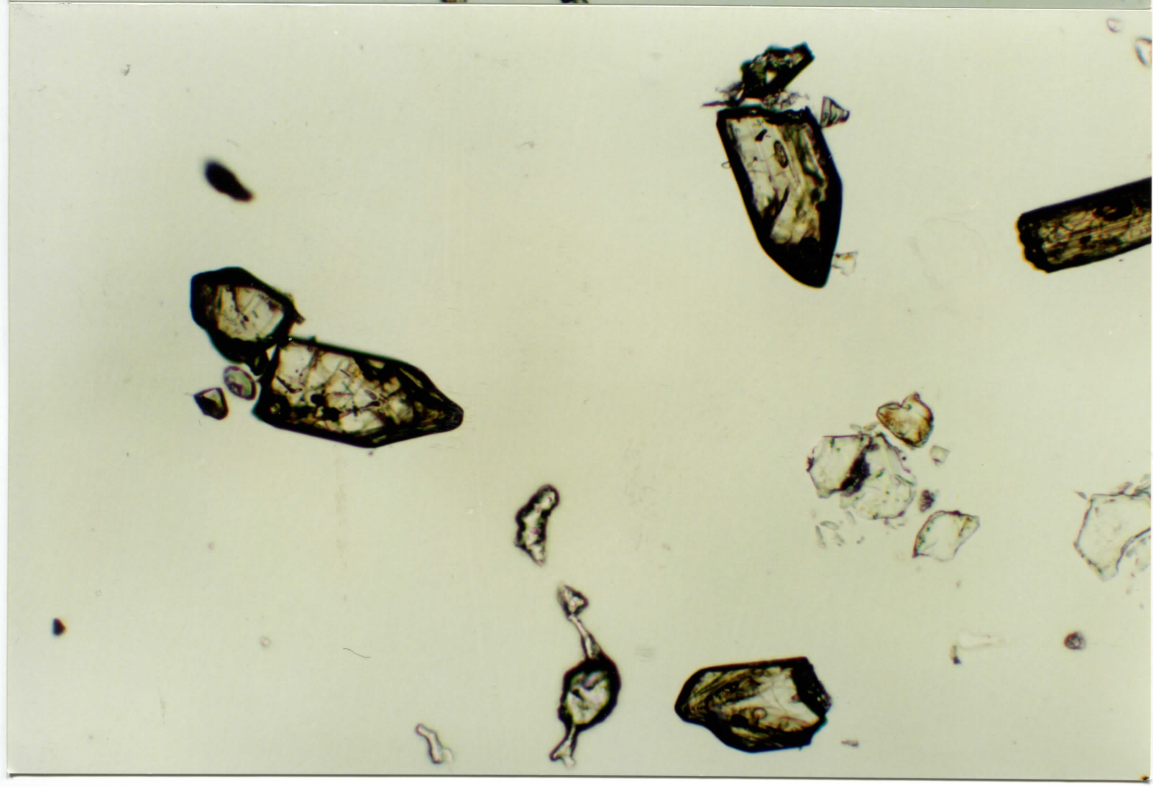
Pop A

gp 5

9-1
1-8
Ascribed
with
count
904

6-1
9-1

7-1
71

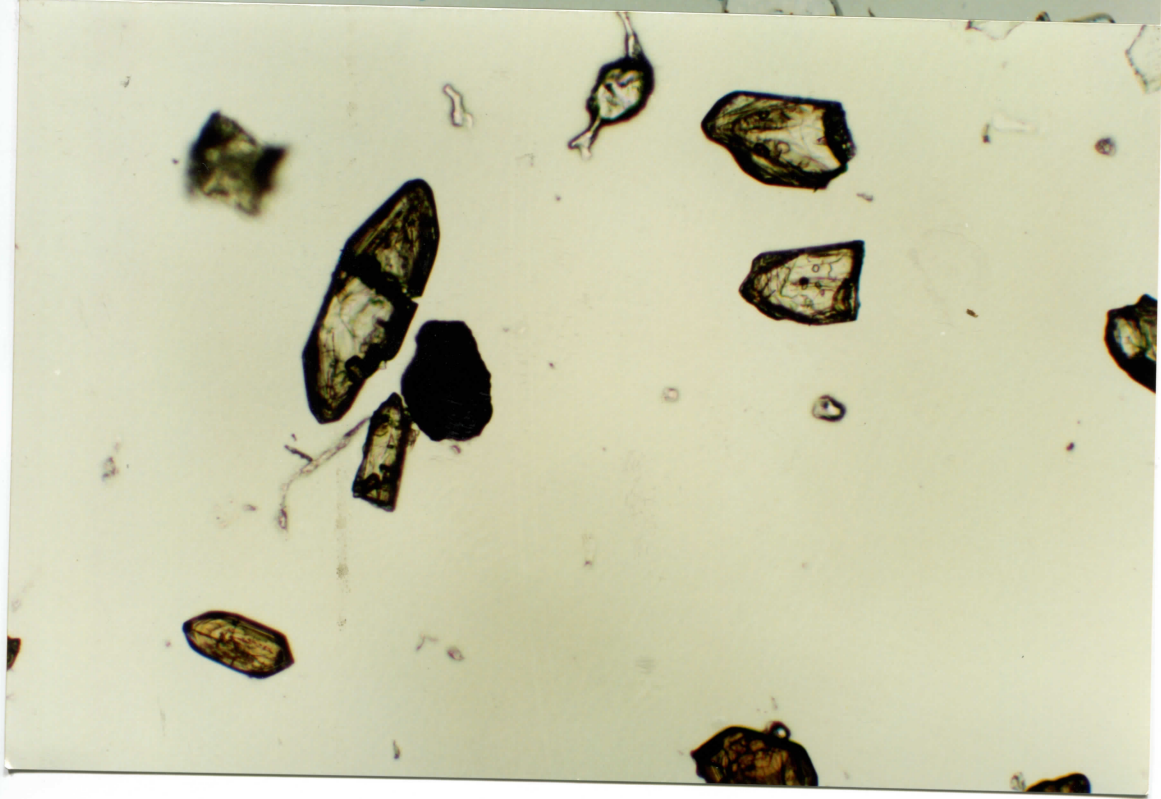
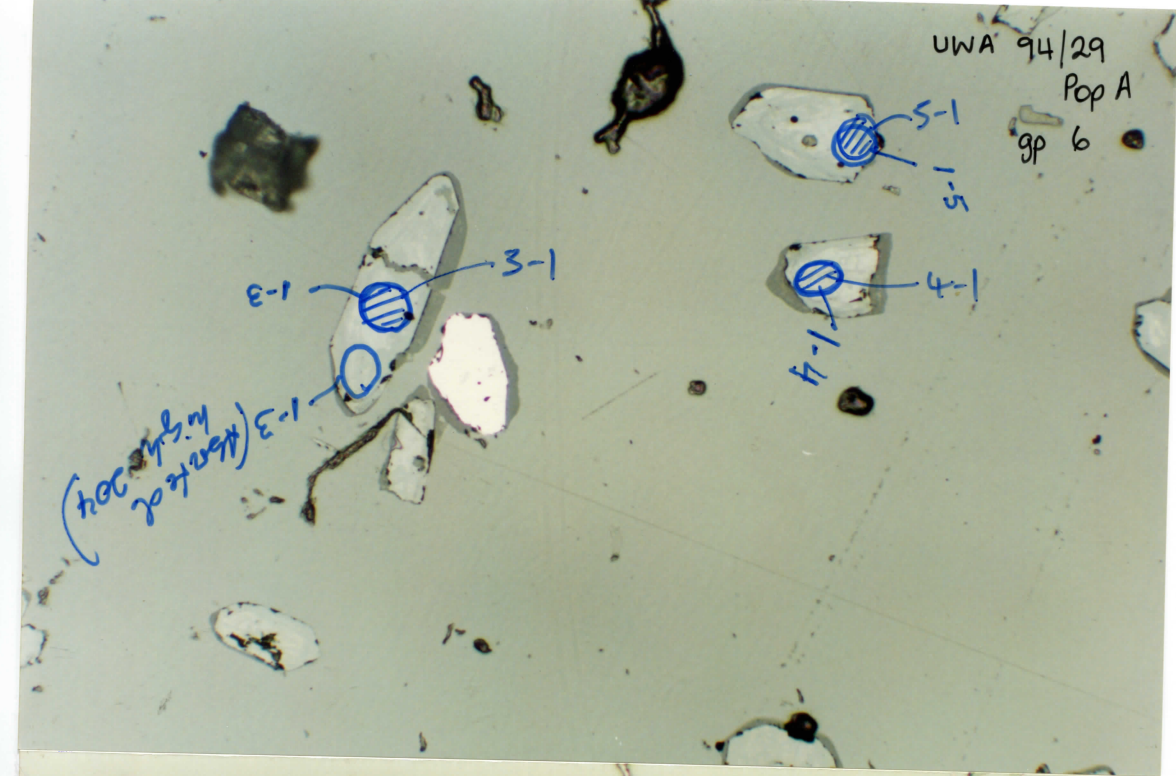


UWA 94/29
Pop A
gp 6

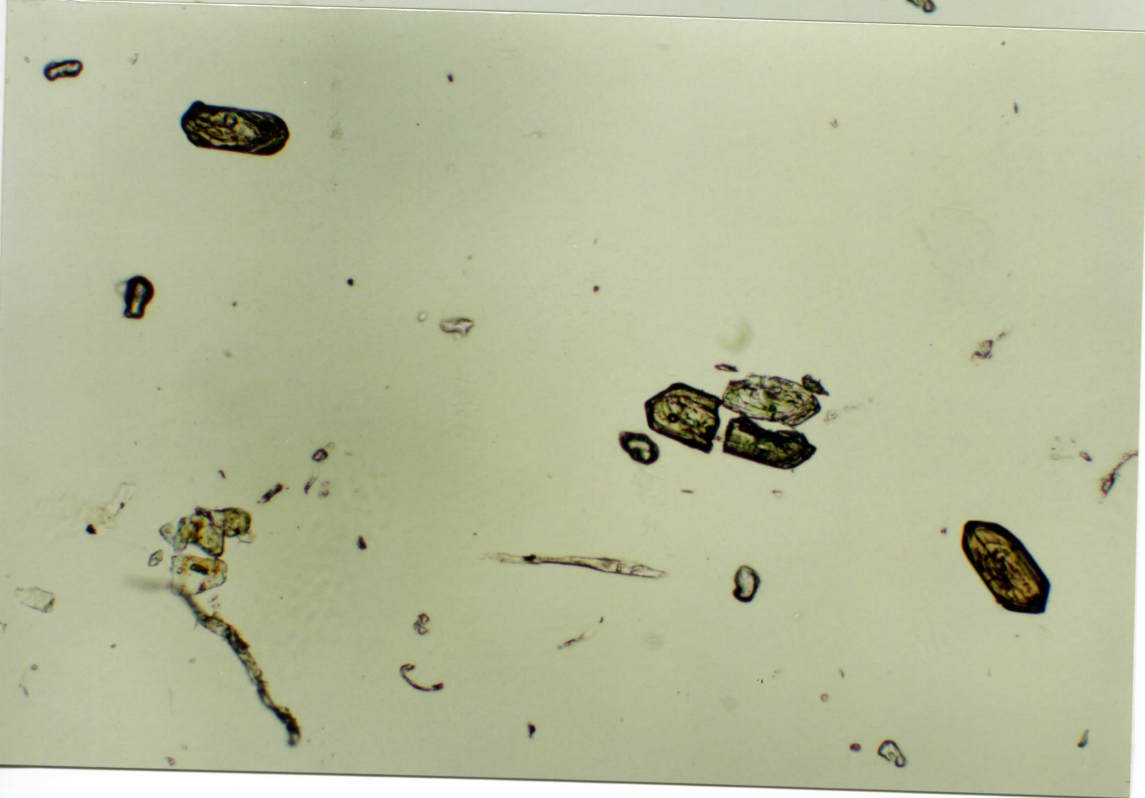
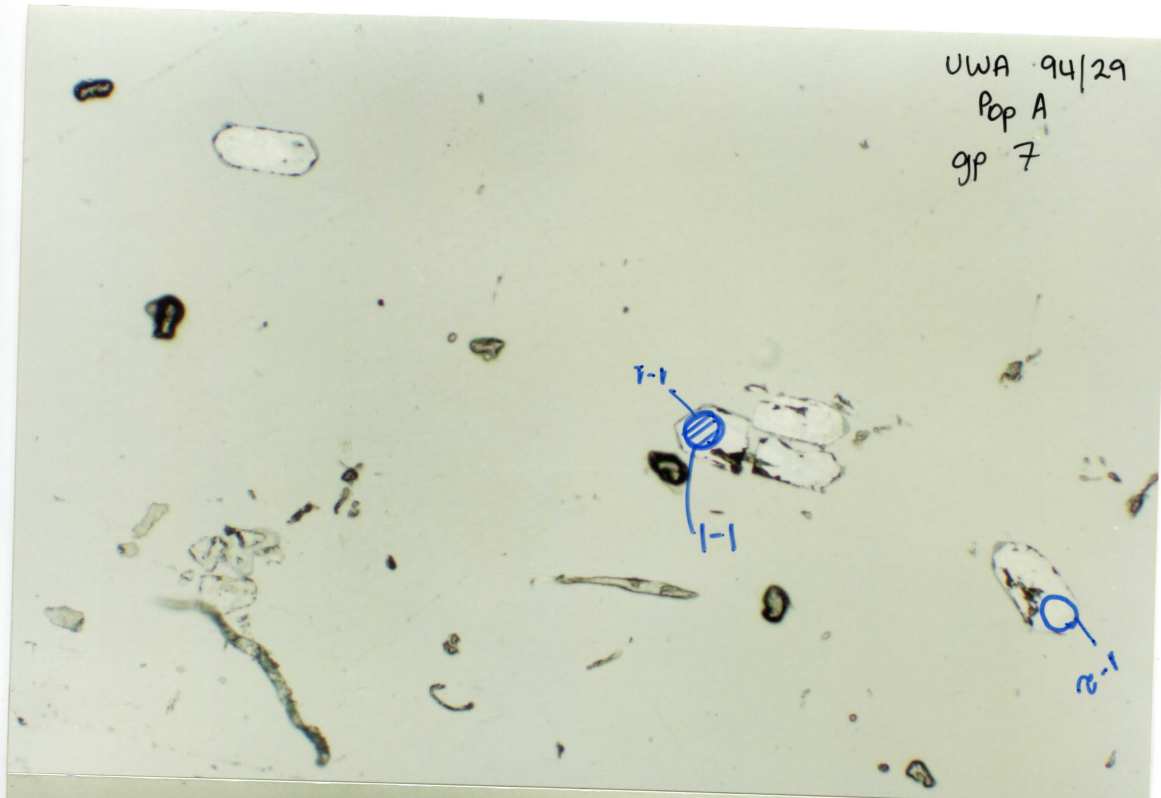
1-3
3-1

4-1
1-4

(1-3) (marked
in 2/24/04)



UWA 94/29
Pop A
gp 7

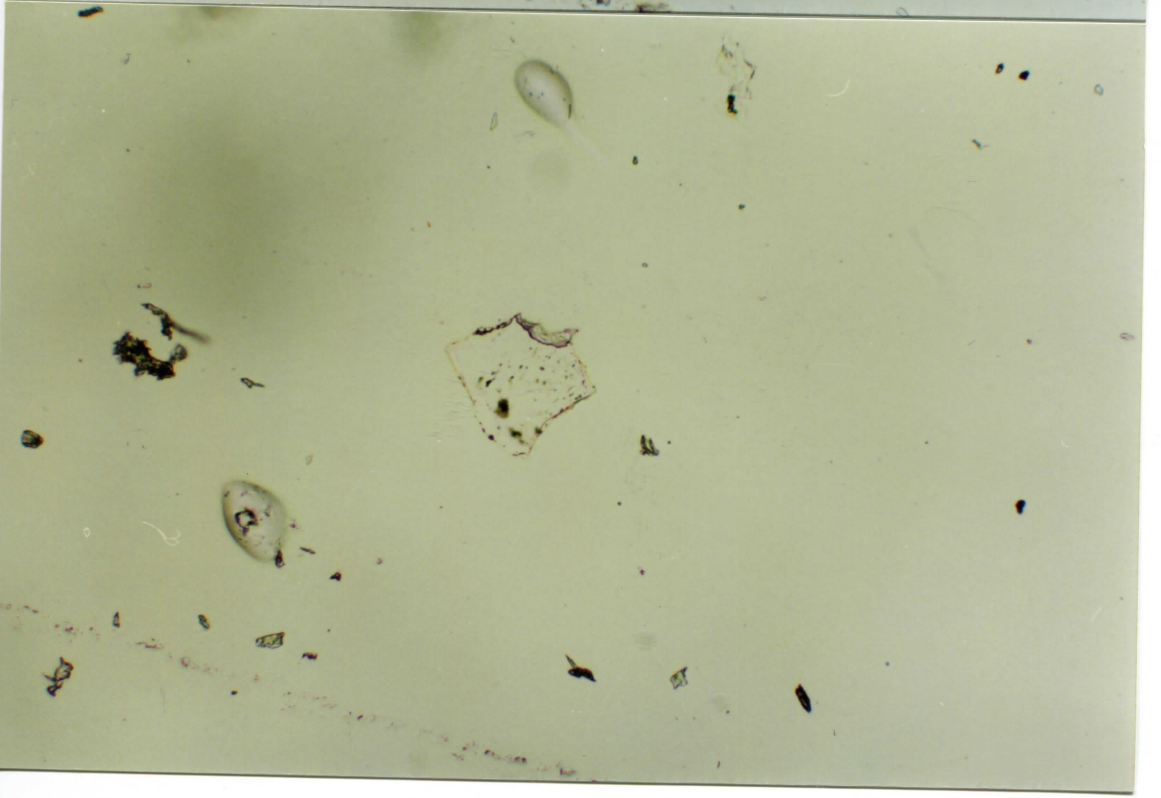
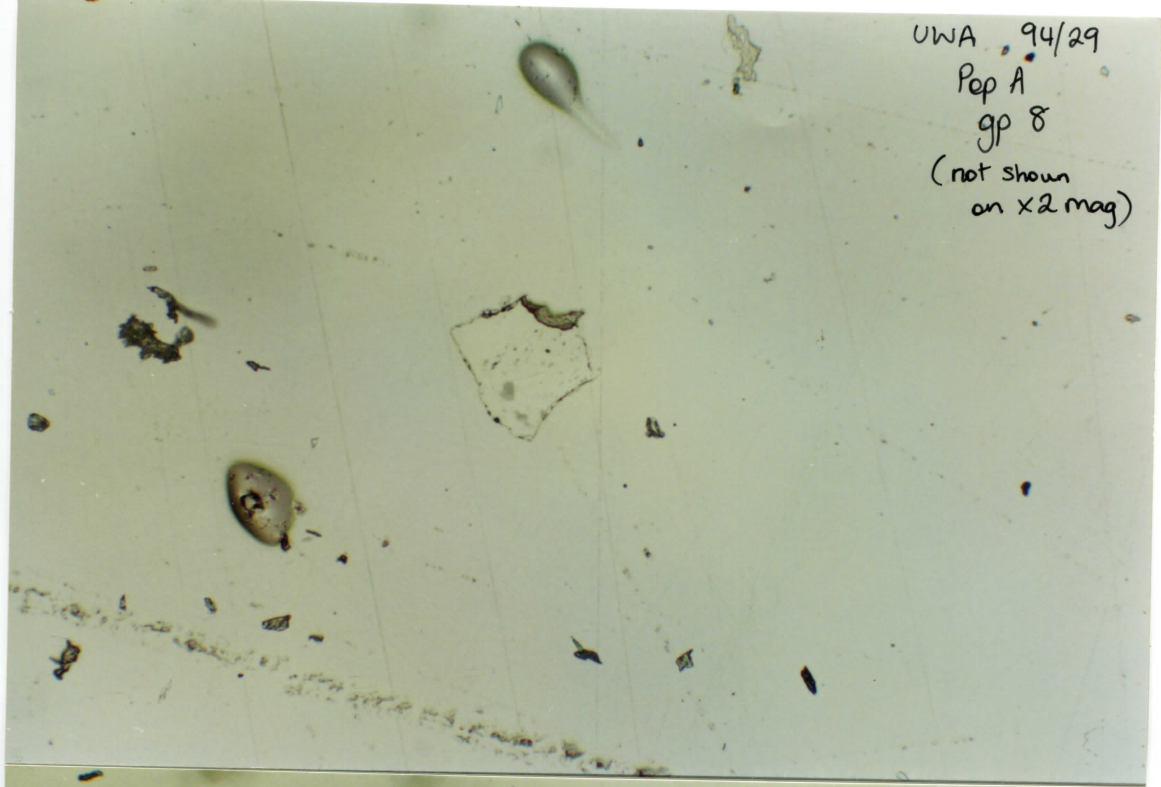


UWA 94/29

Pep A

gp 8

(not shown
on x2 mag)



UWA 94/29

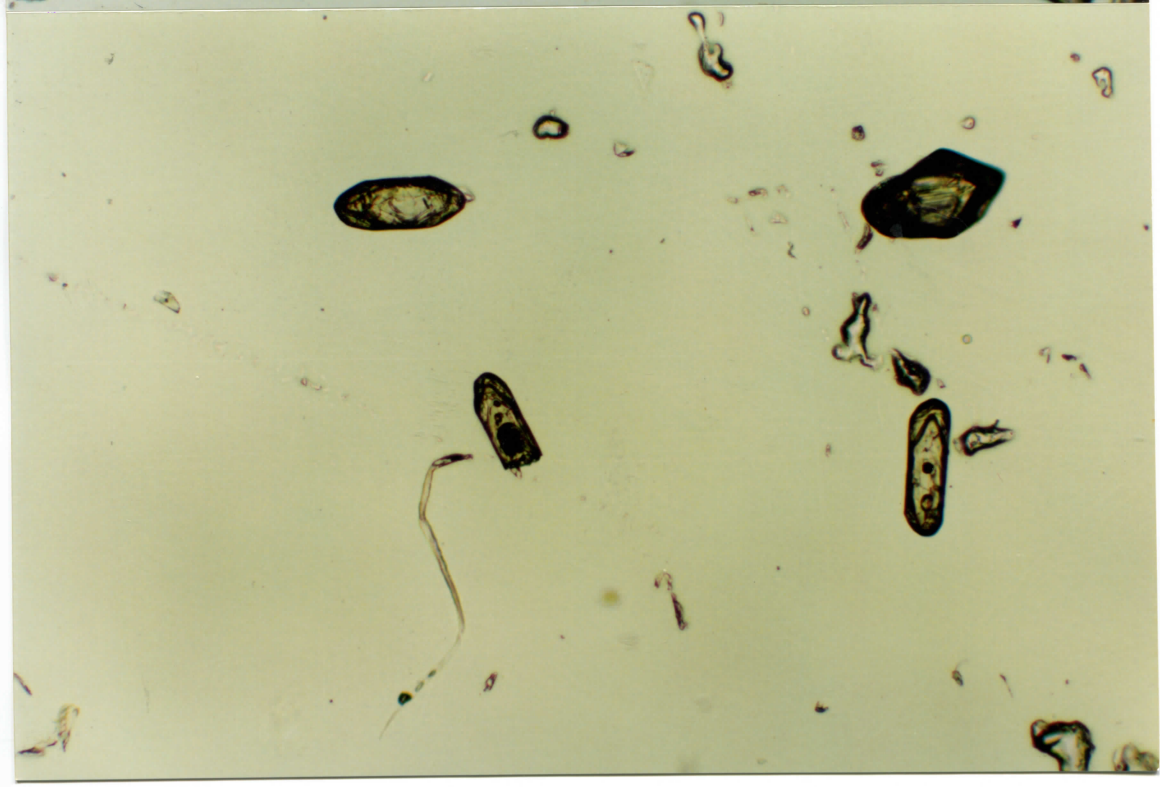
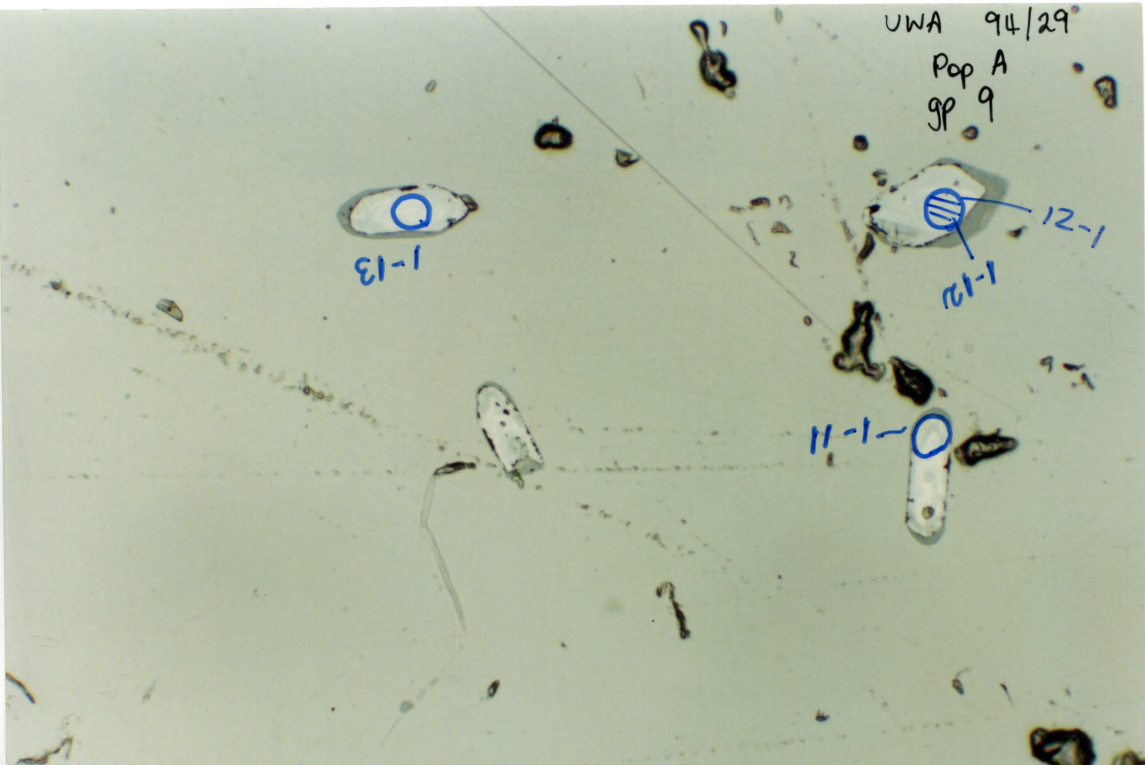
Pop A

gp 9

1-13

12-1

11-1-0



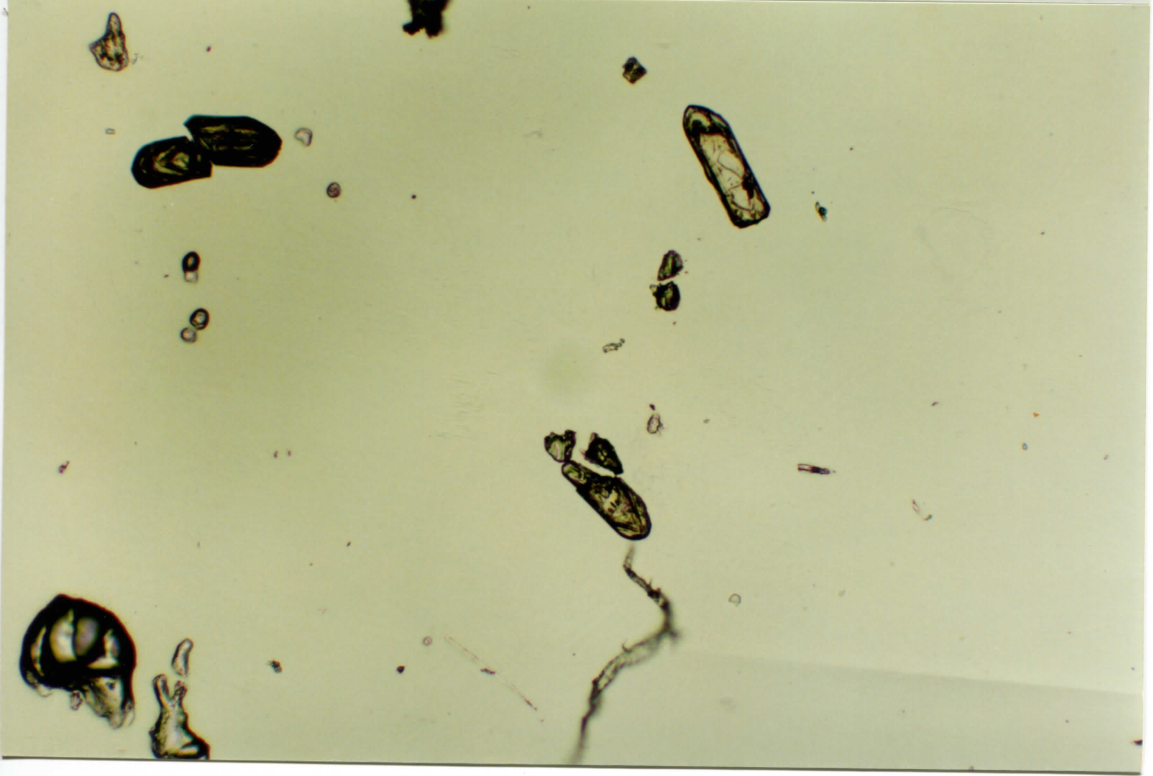
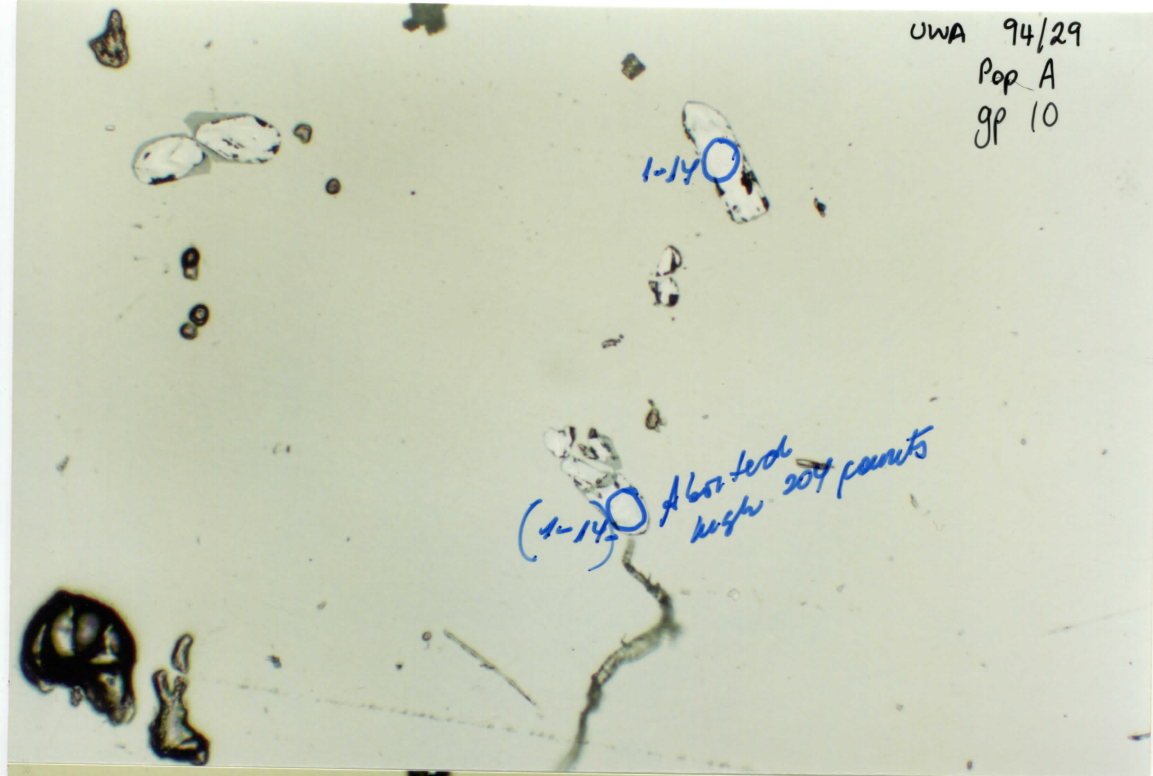
UWA 94/29

Pop A

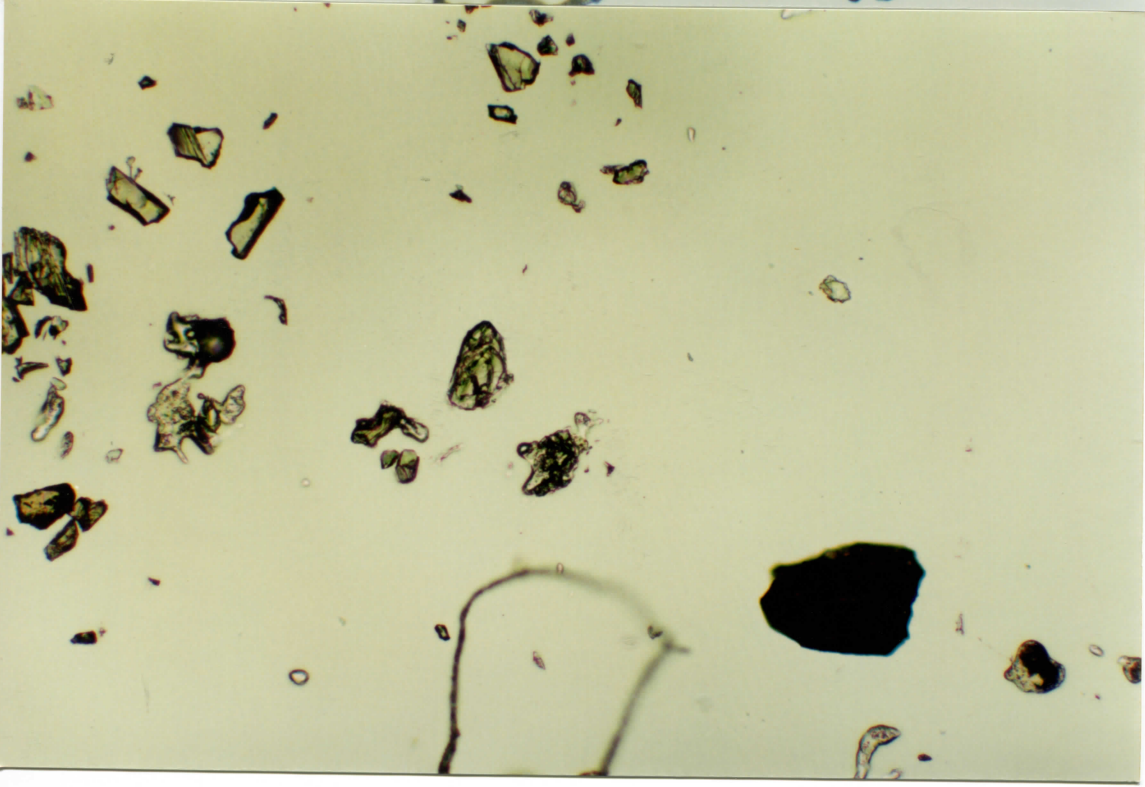
gp 10

1-14

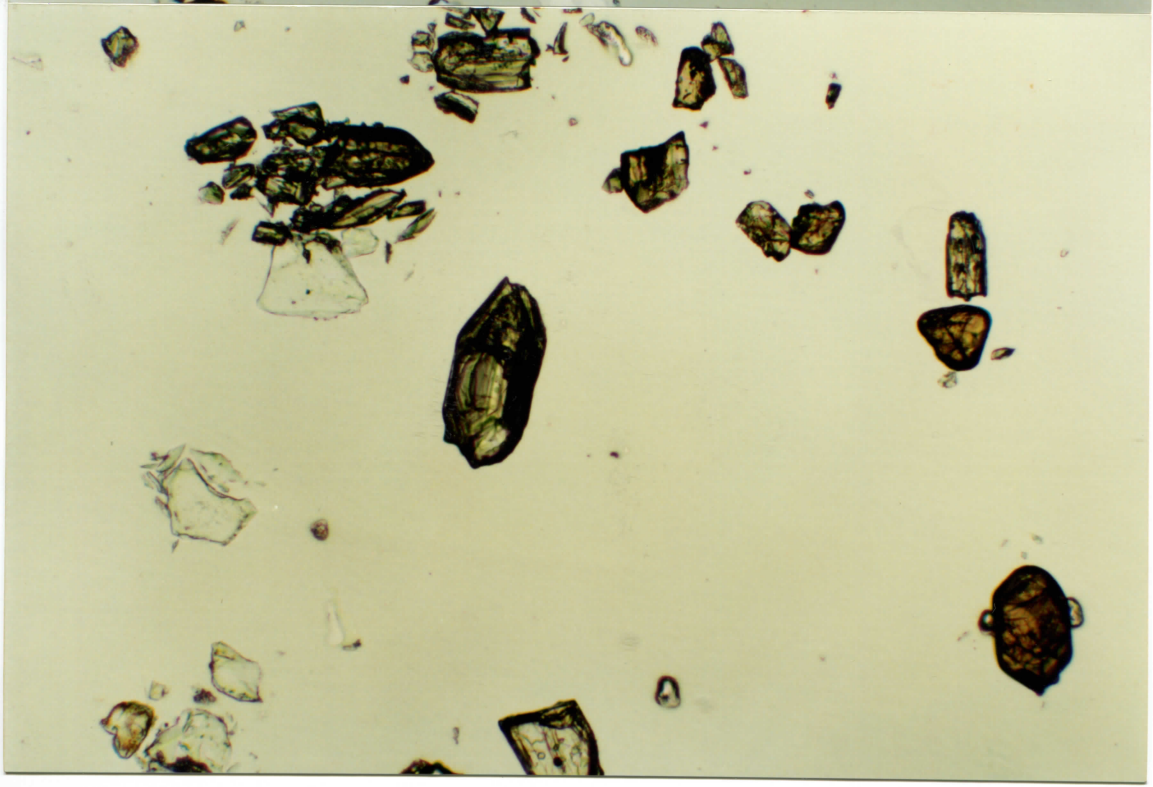
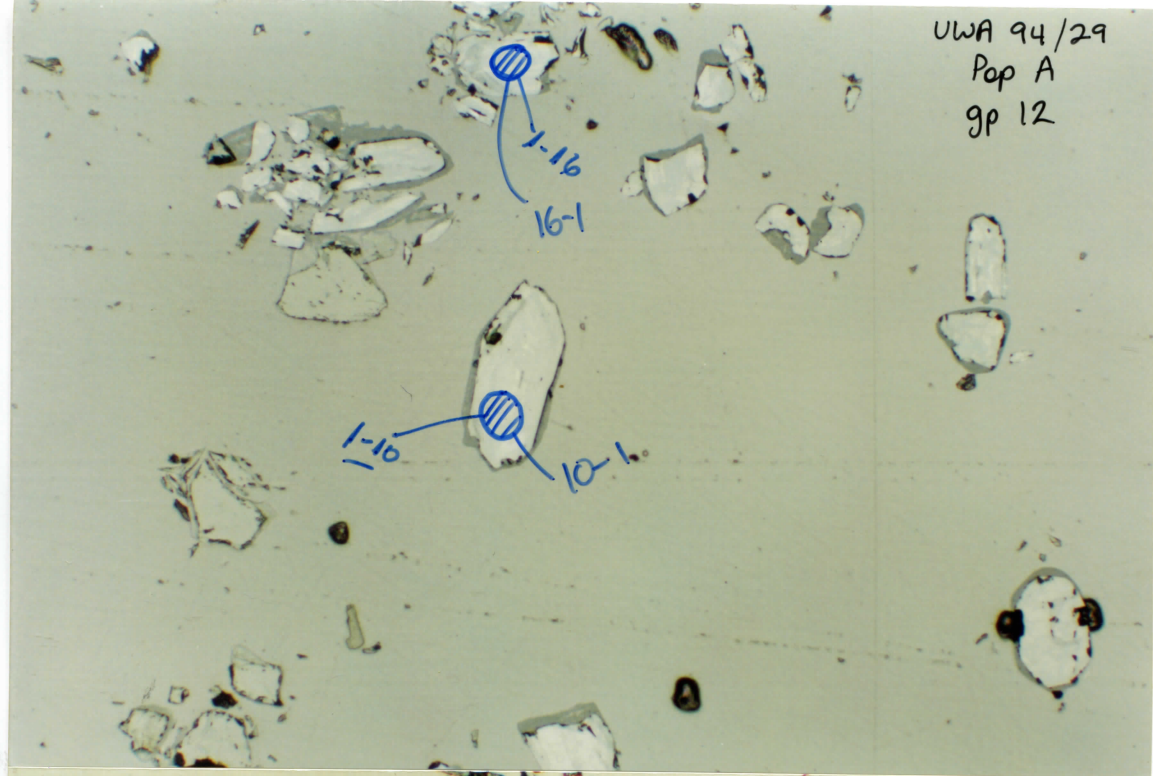
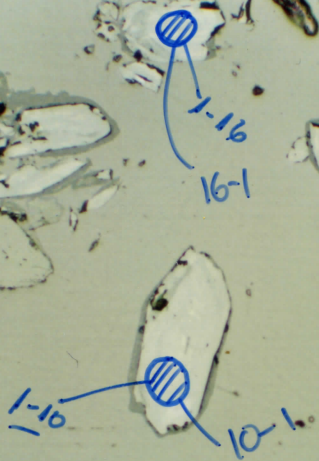
(1-14) Also took
high 204 parents



UWA 94 / 29
Pop A
gp 11



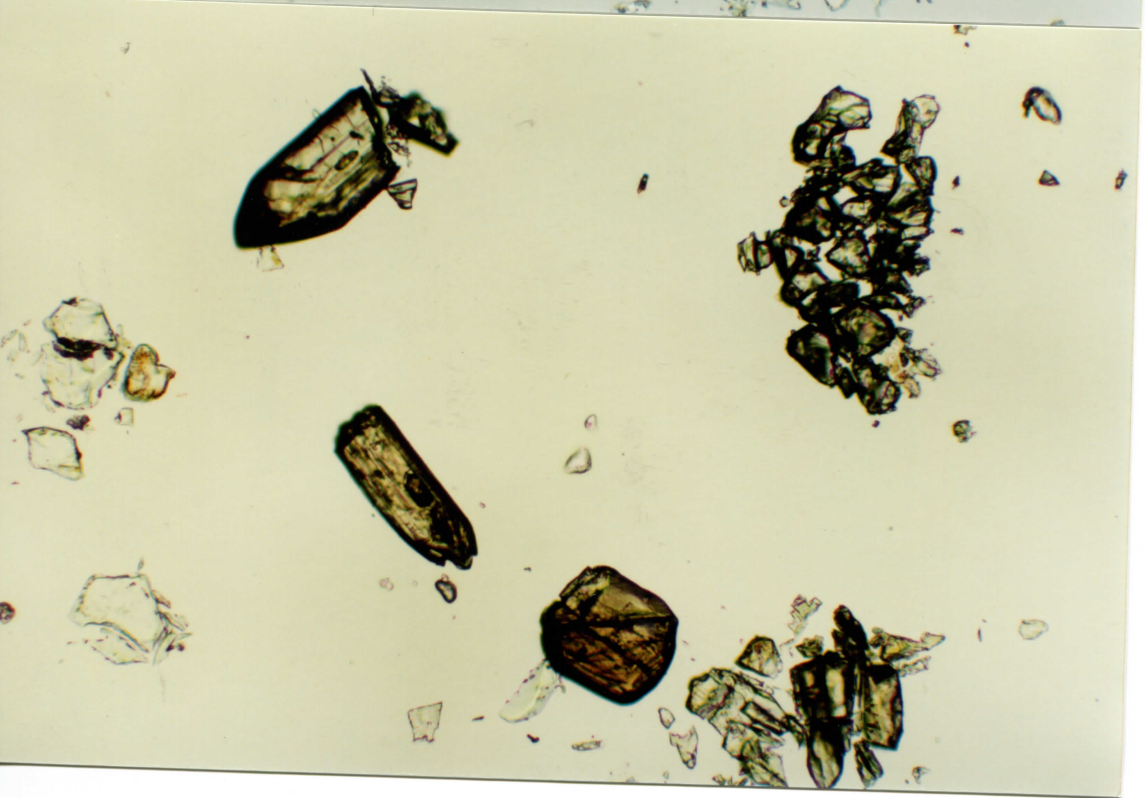
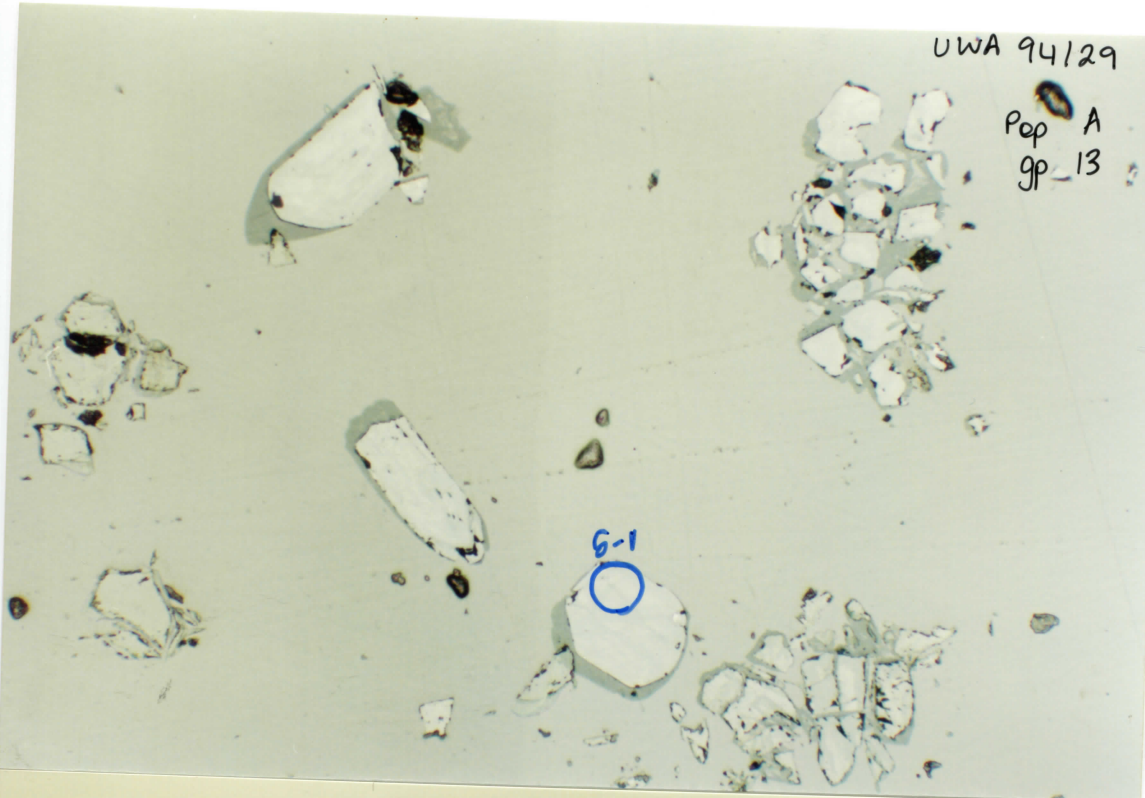
UWA 94/29
Pop A
gp 12



UWA 94129

Pop A
gp 13

6-1



UWA 94/29
Pop A
gp 14

