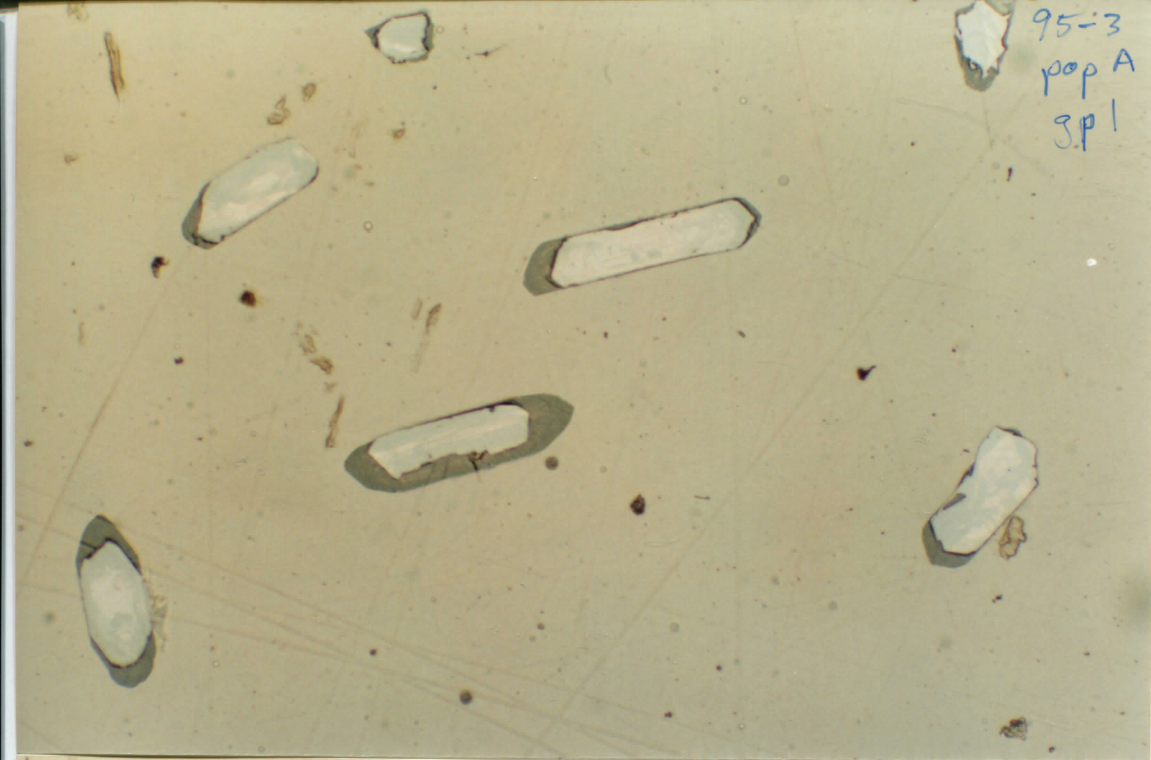
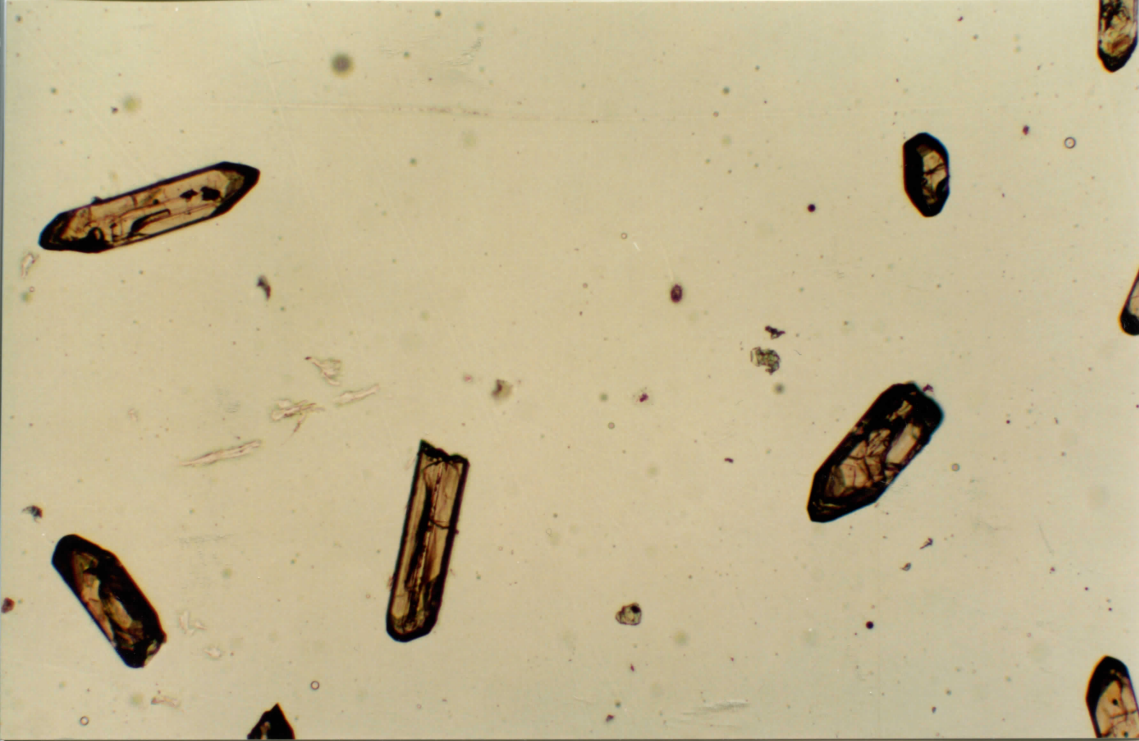
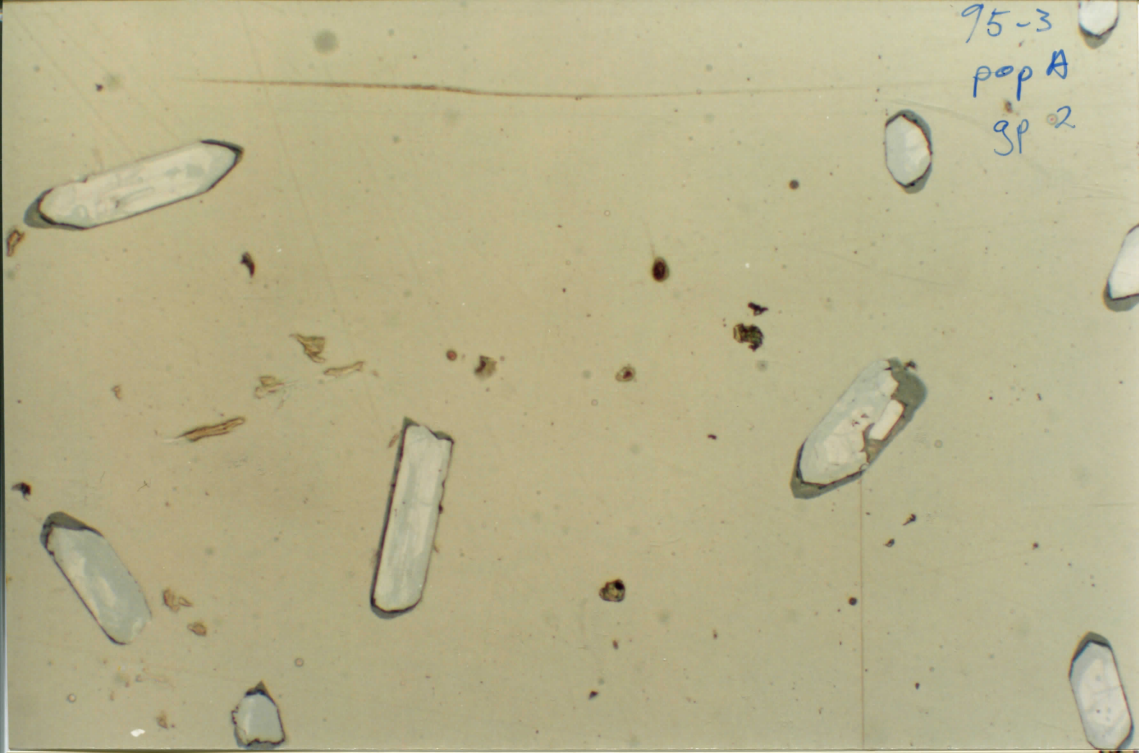


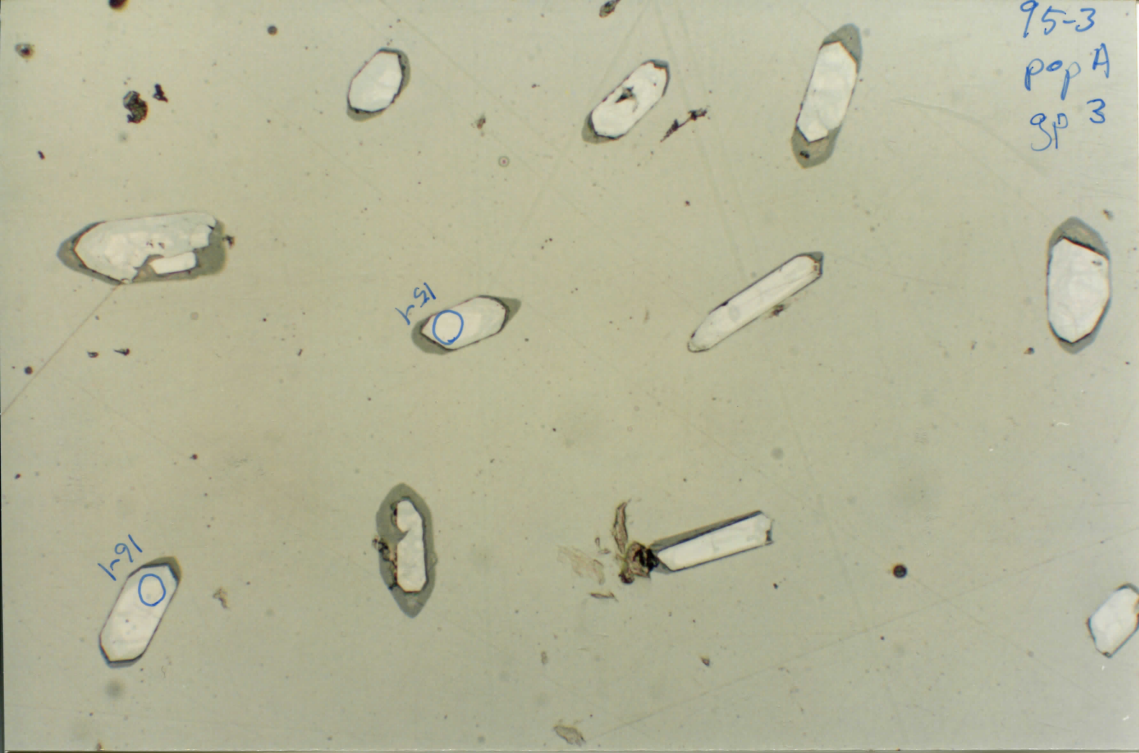
95-3  
pop A  
3.p1



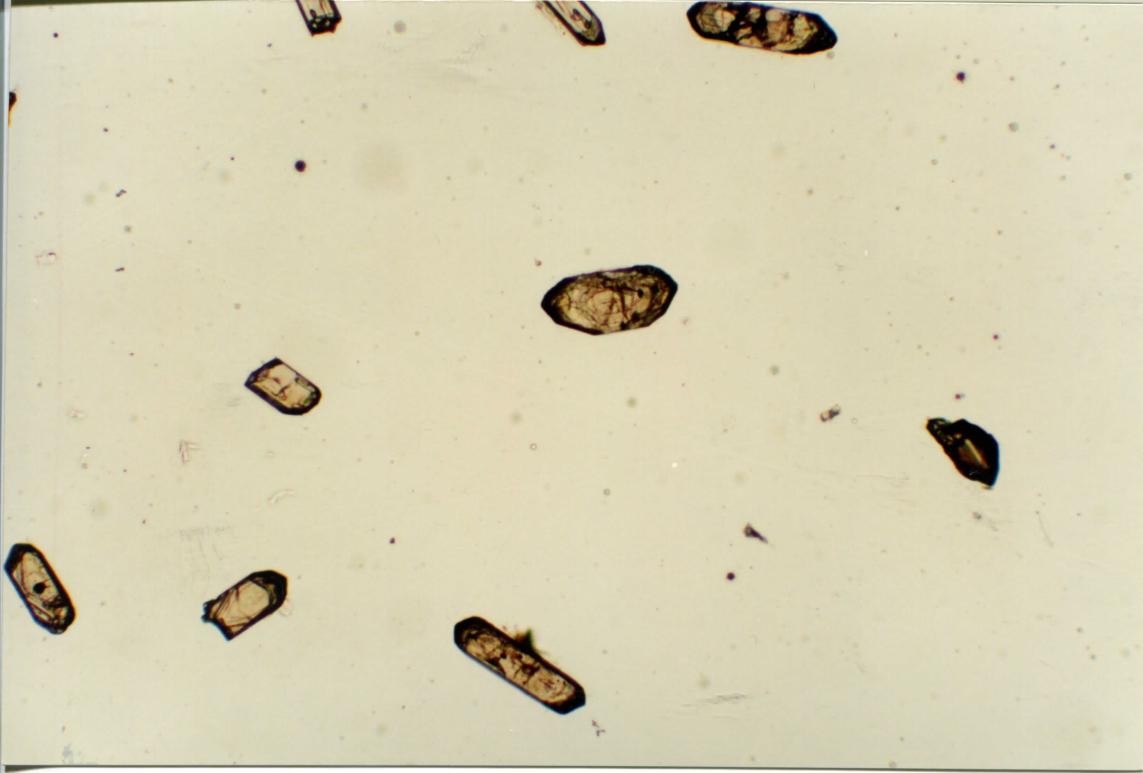
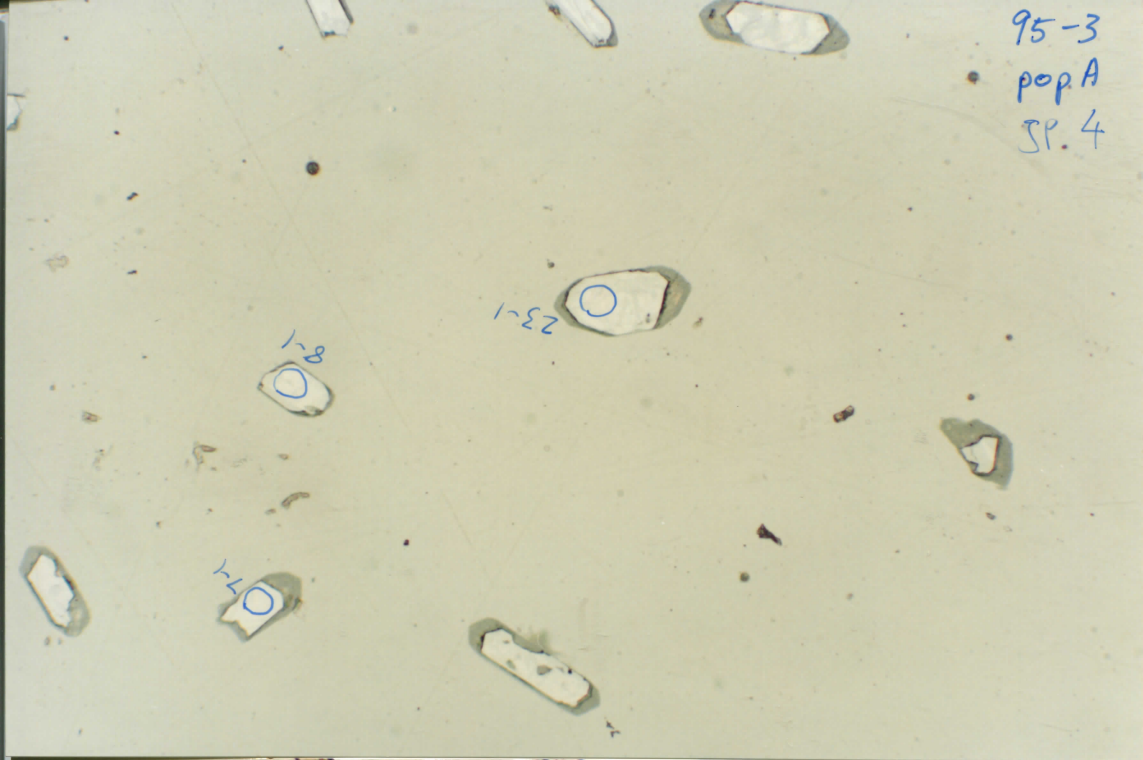
95-3  
pop A  
SP 2



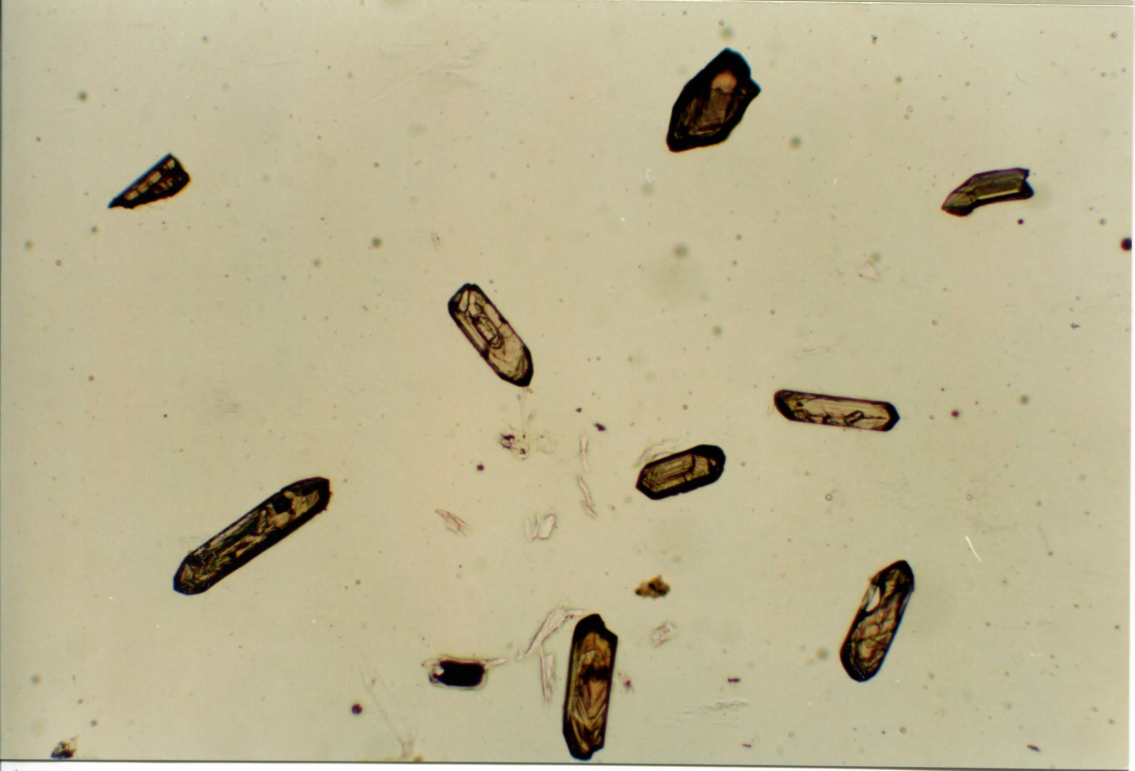
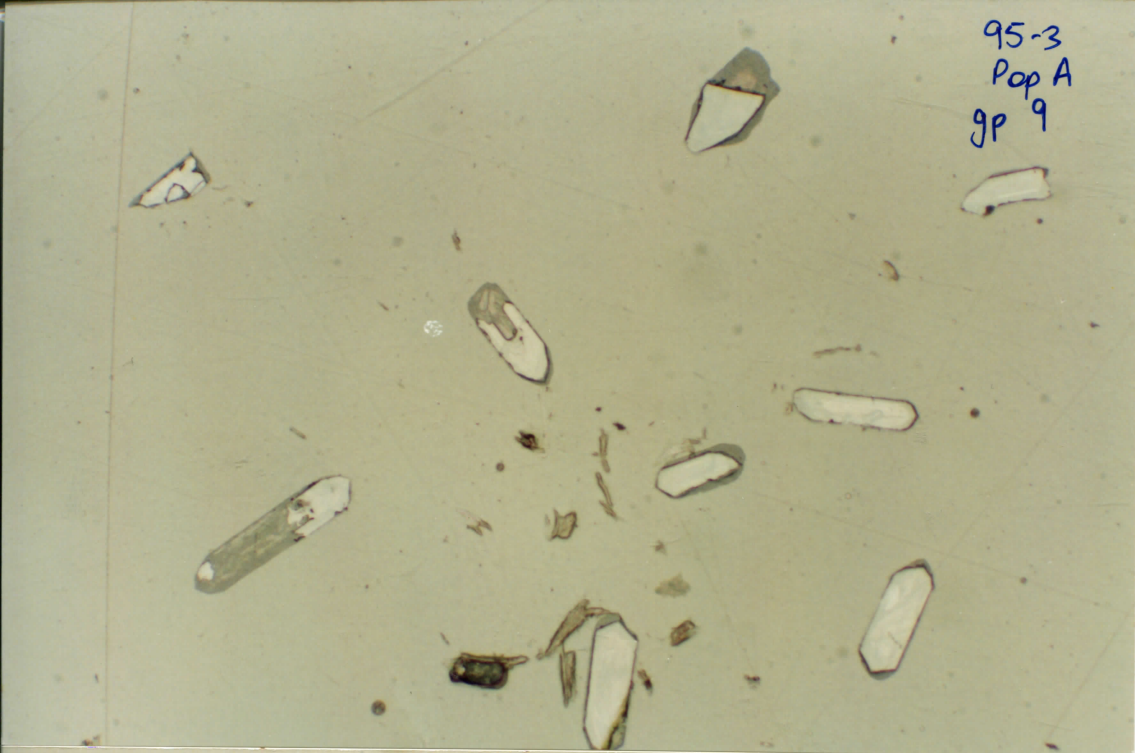
95-3  
pop A  
sp 3



95-3  
pop A  
SP. 4



95-3  
Pop A  
gp 9



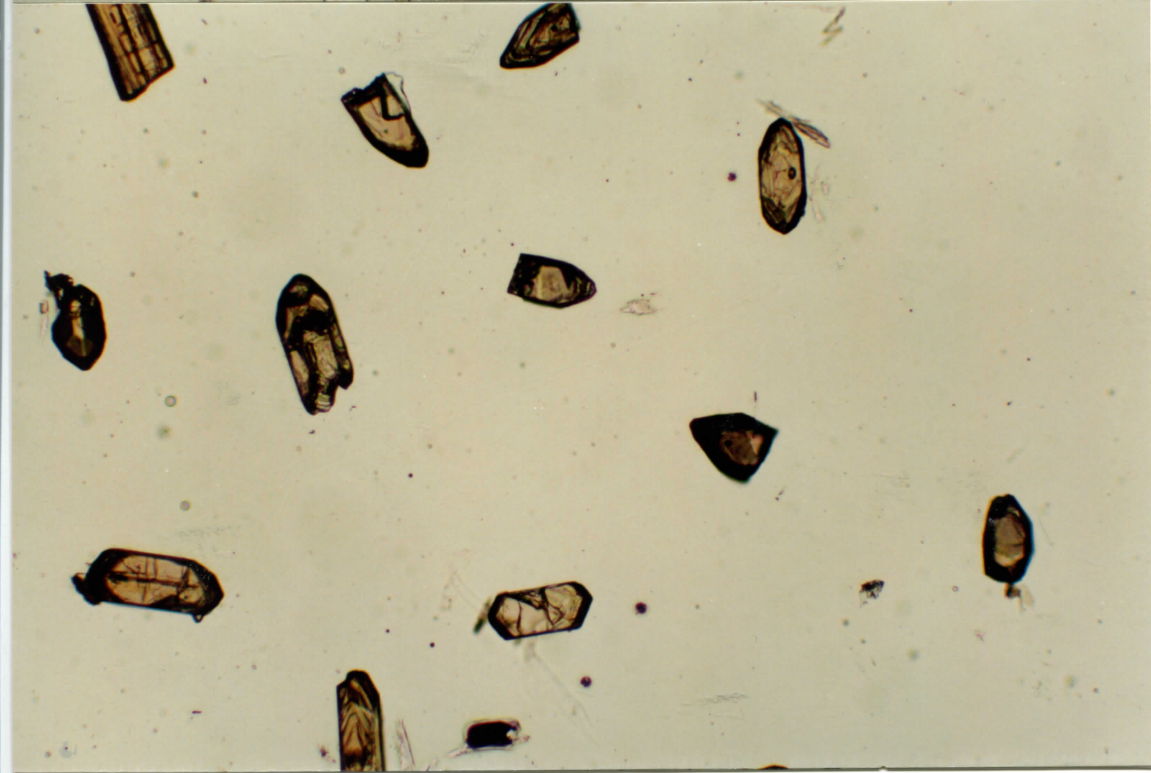
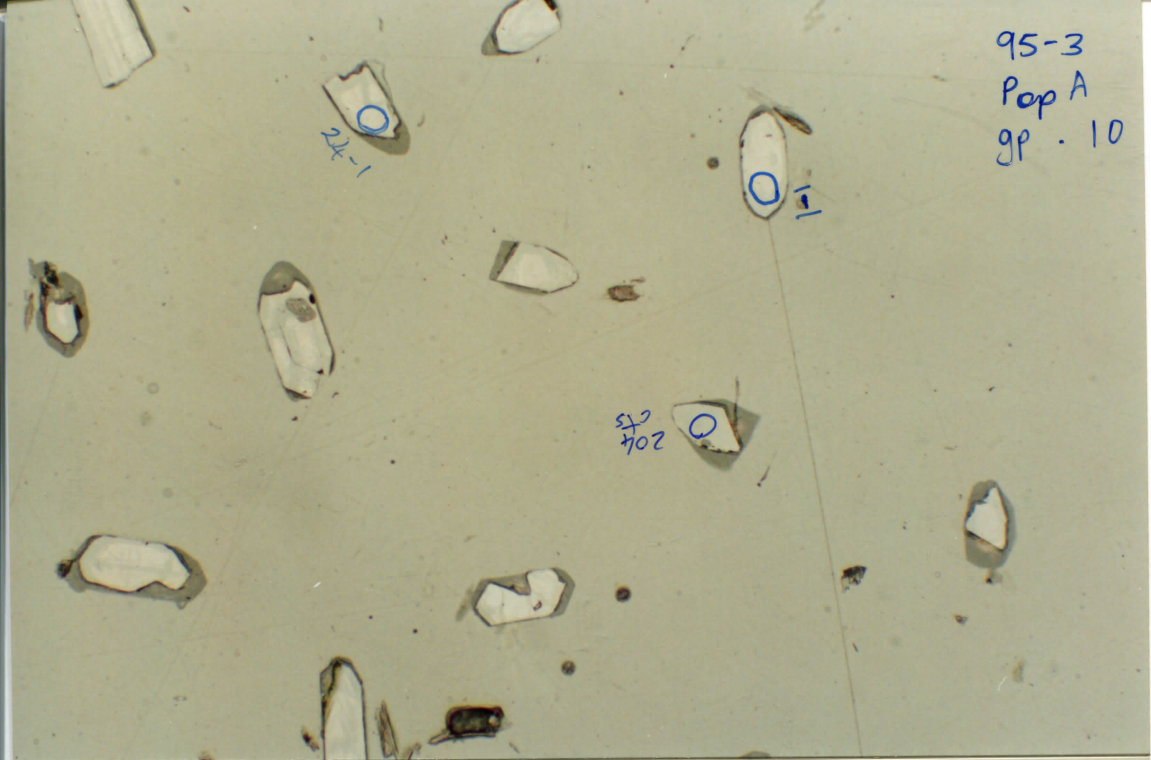
95-3  
Pop A  
gp . 10

24-1

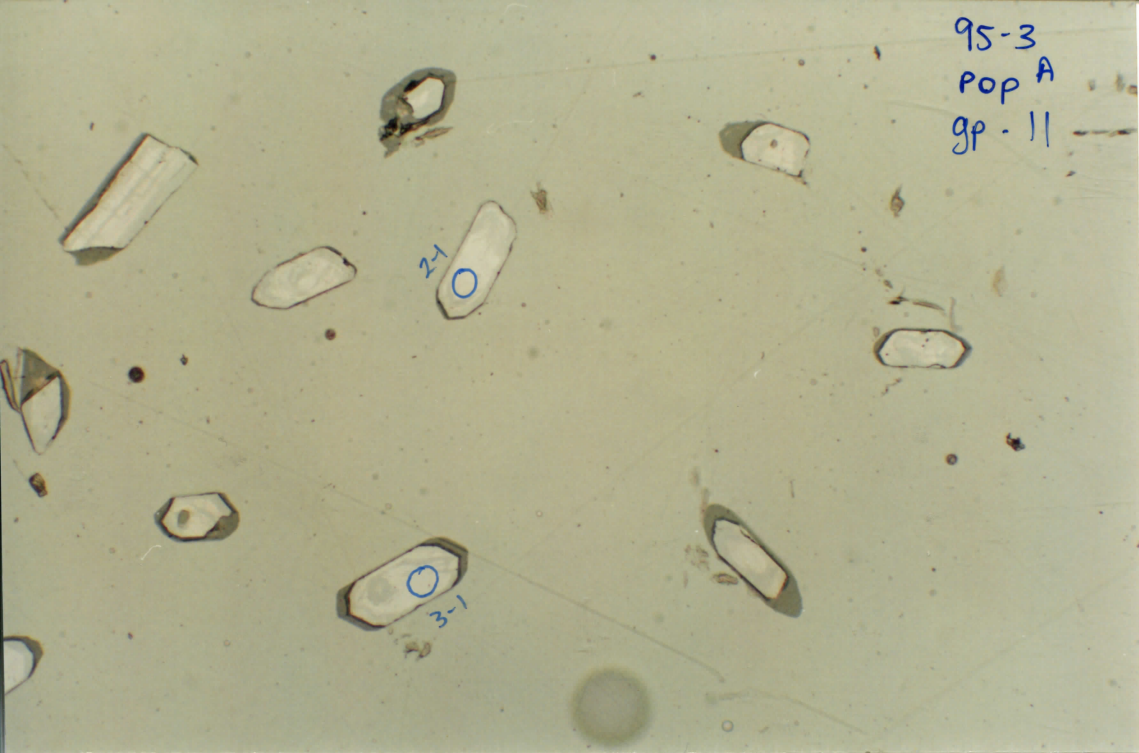
0

204  
CS

0



95-3  
Pop A  
gp - 11

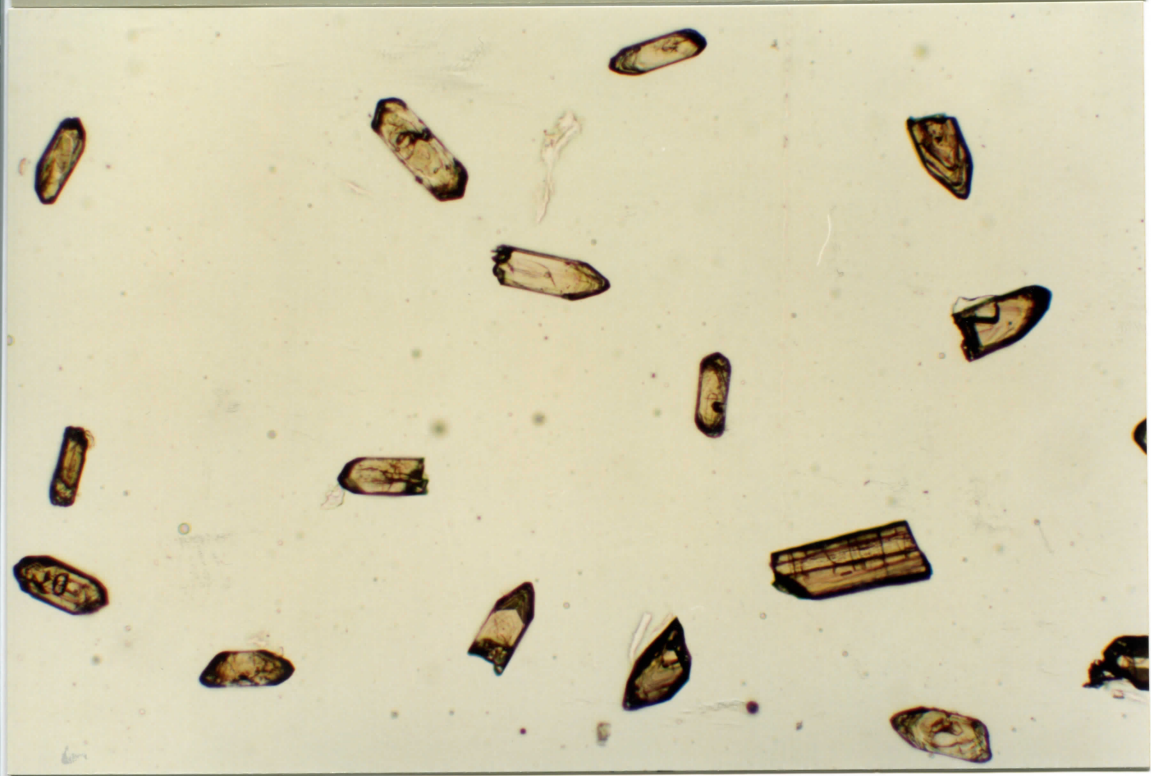
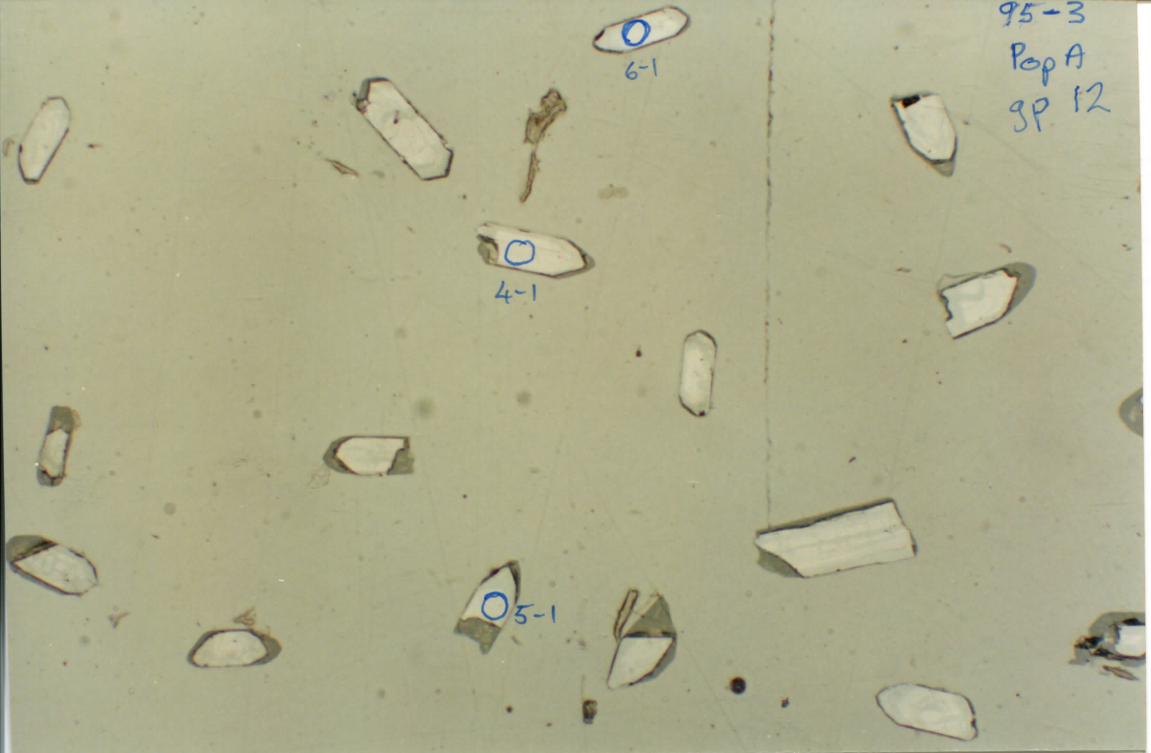


95-3  
Pop A  
SP 12

6-1

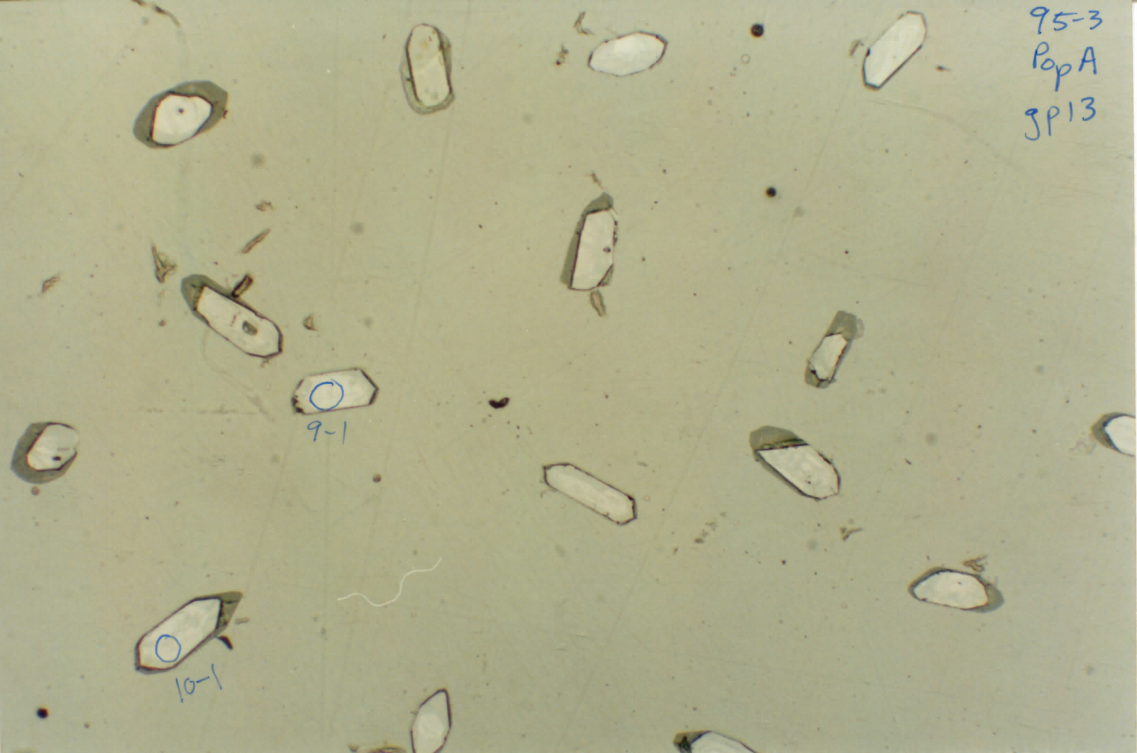
4-1

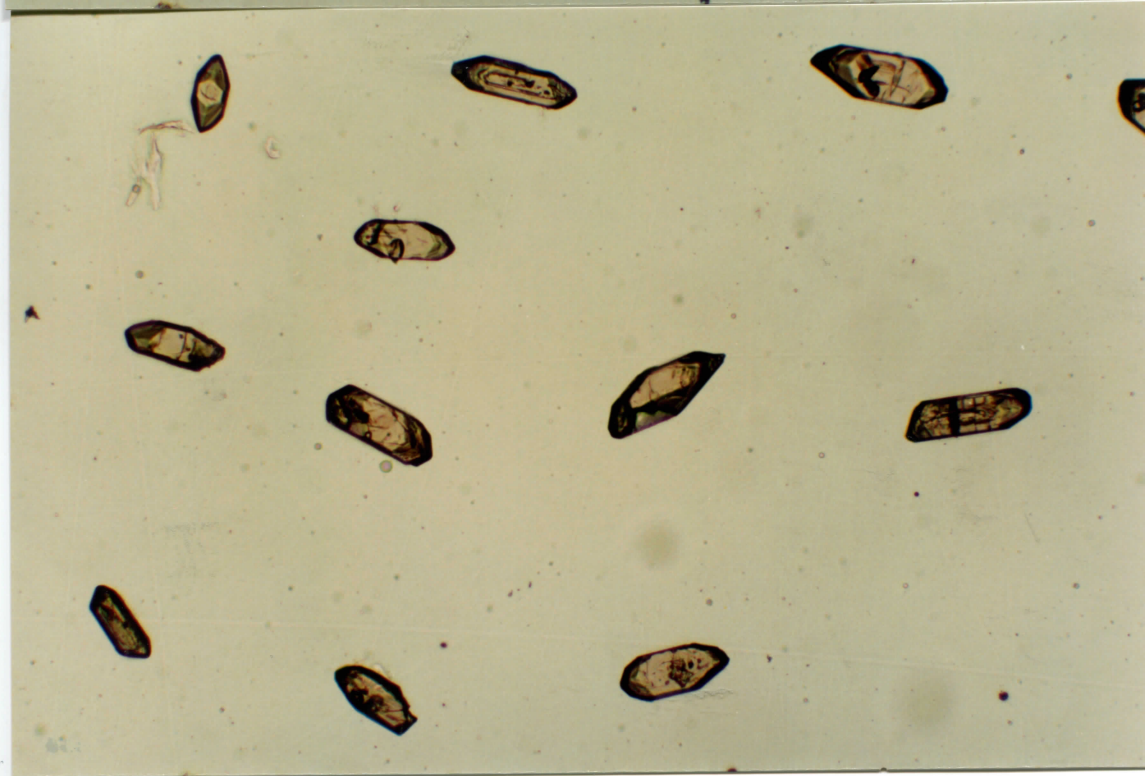
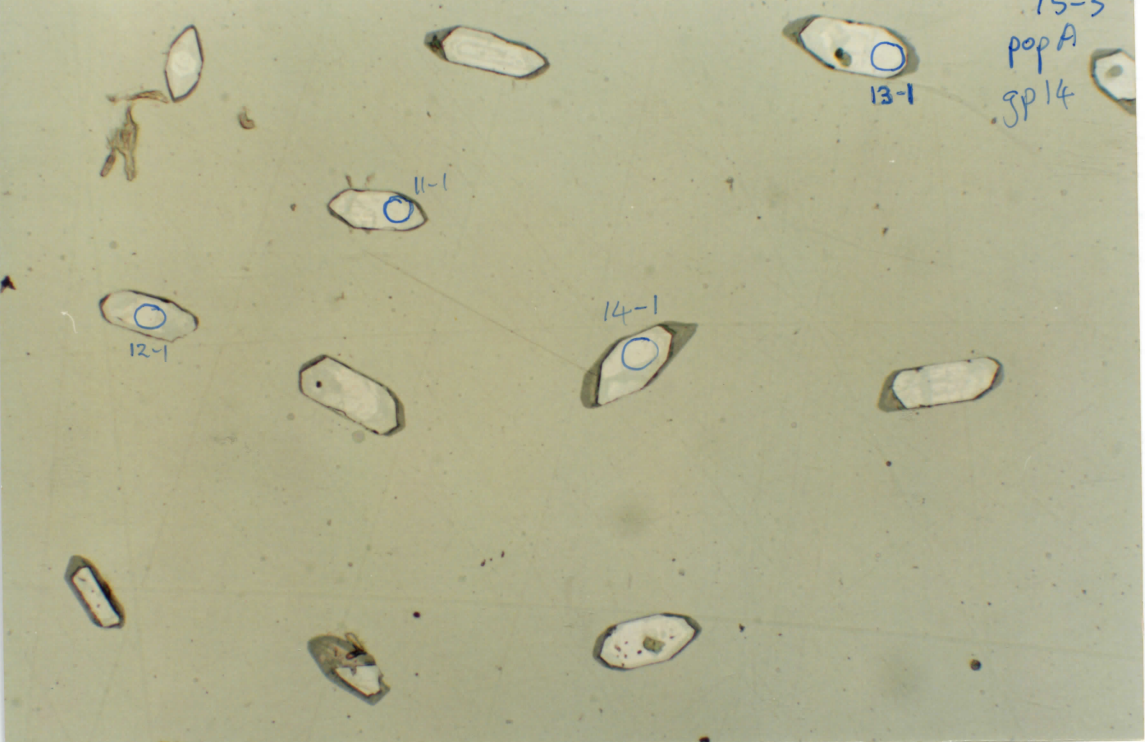
5-1



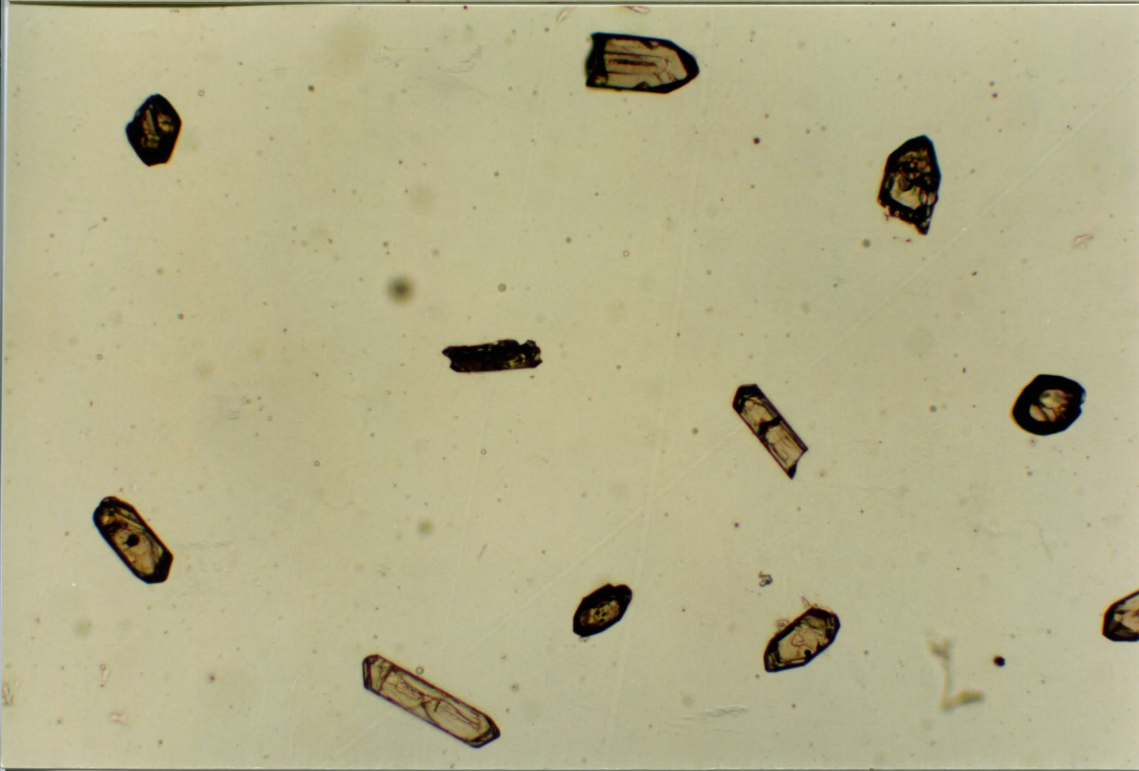
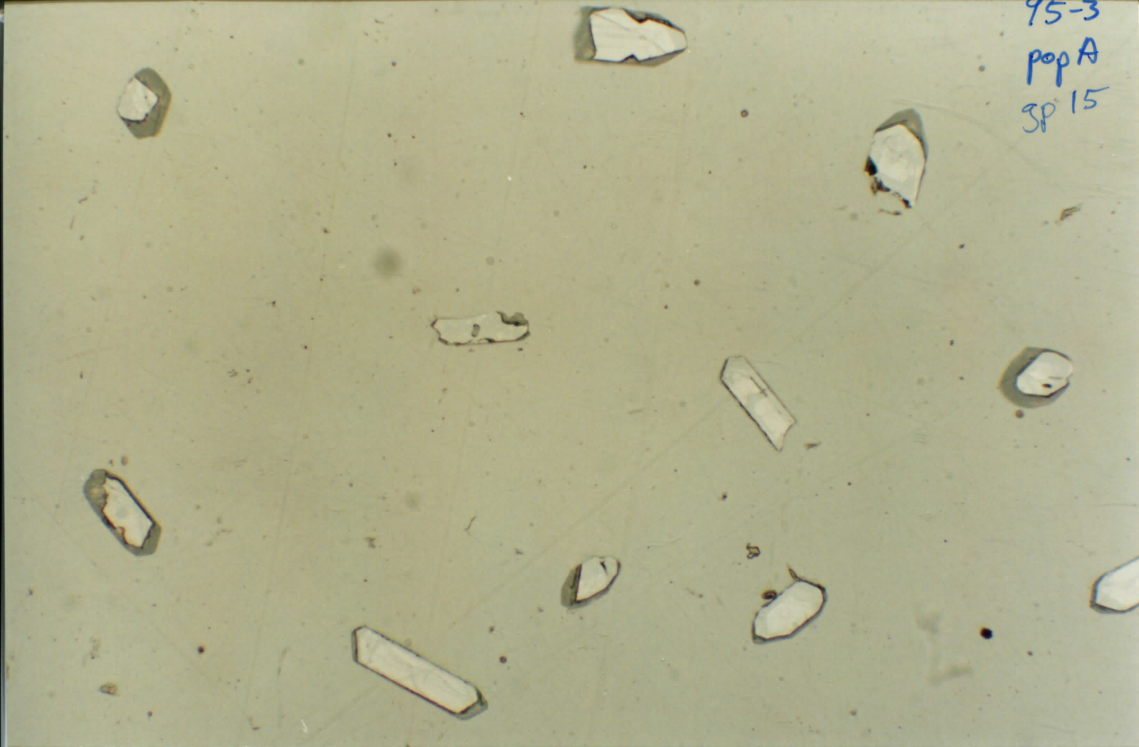


95-3  
Pop A  
JP13





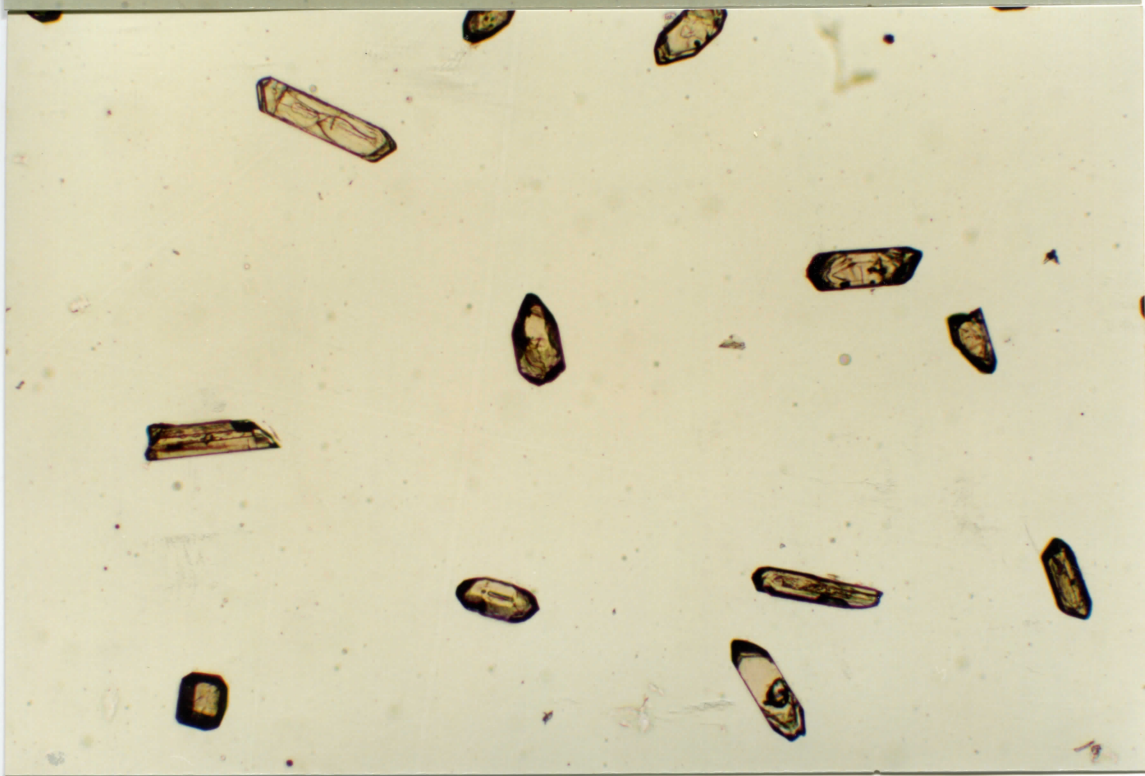
95-3  
pop A  
SP 15



95-3  
pop A  
SP 16

19-1

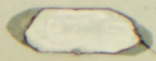
17-1



95-3

pop A

3p 17

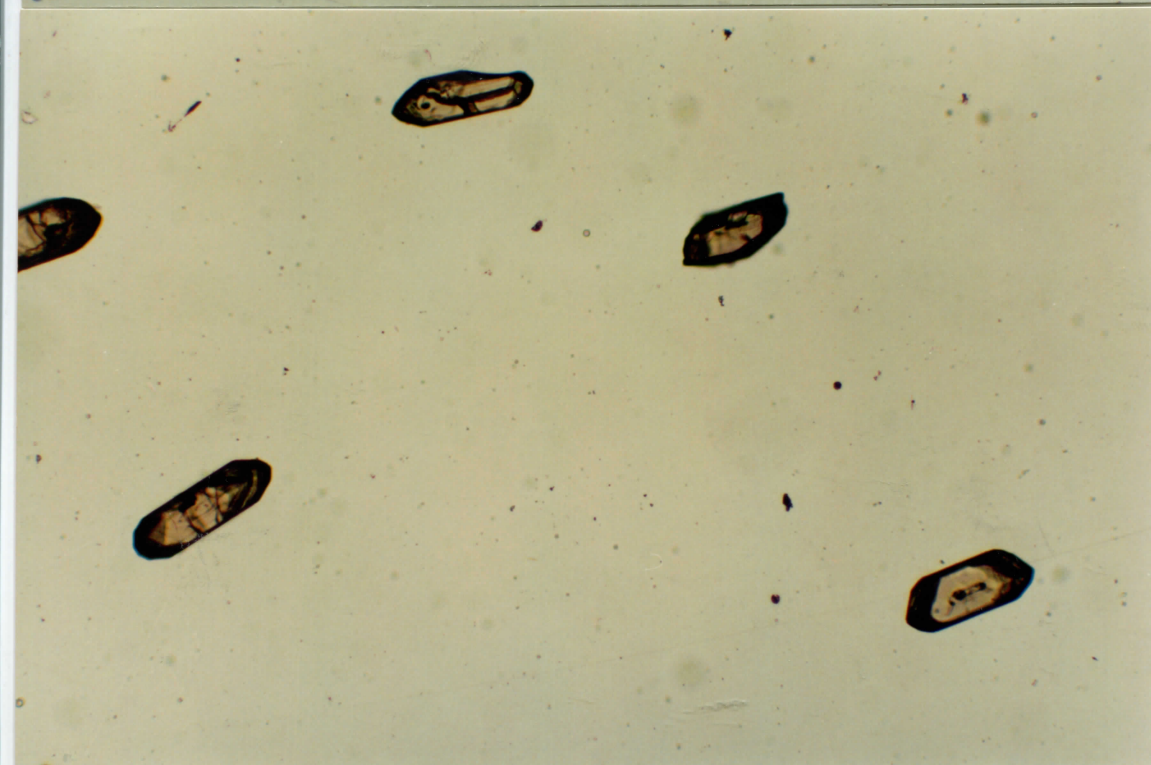
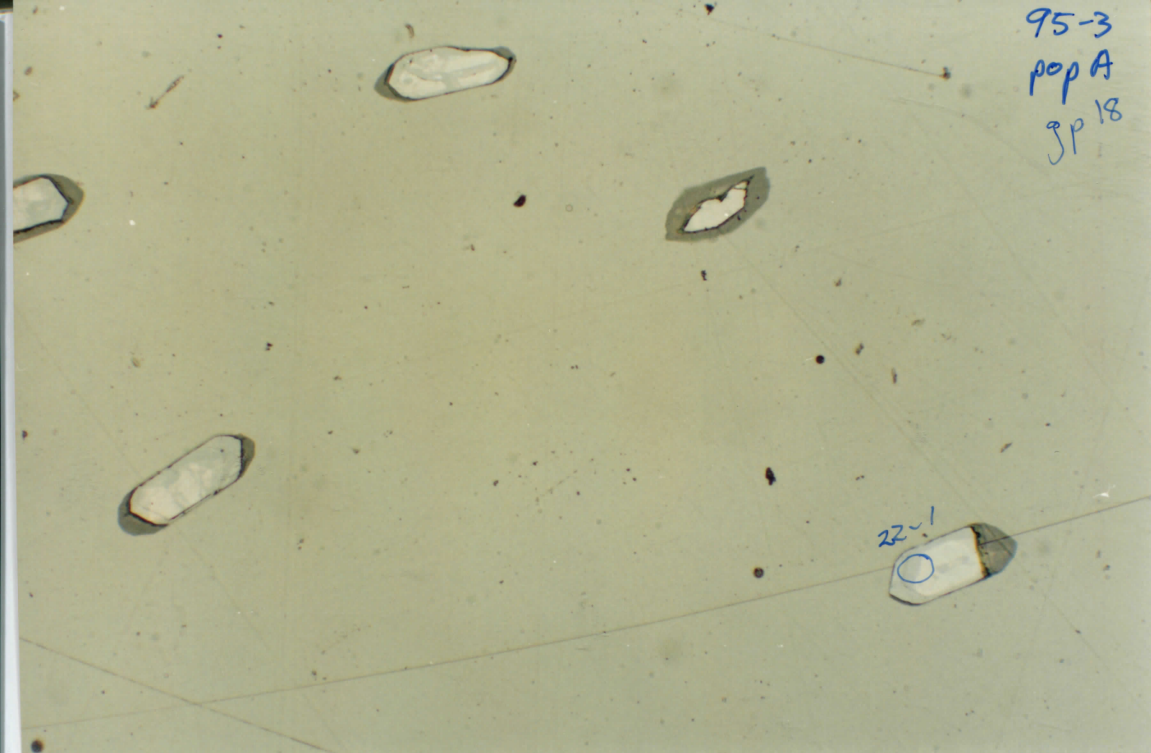


1-81

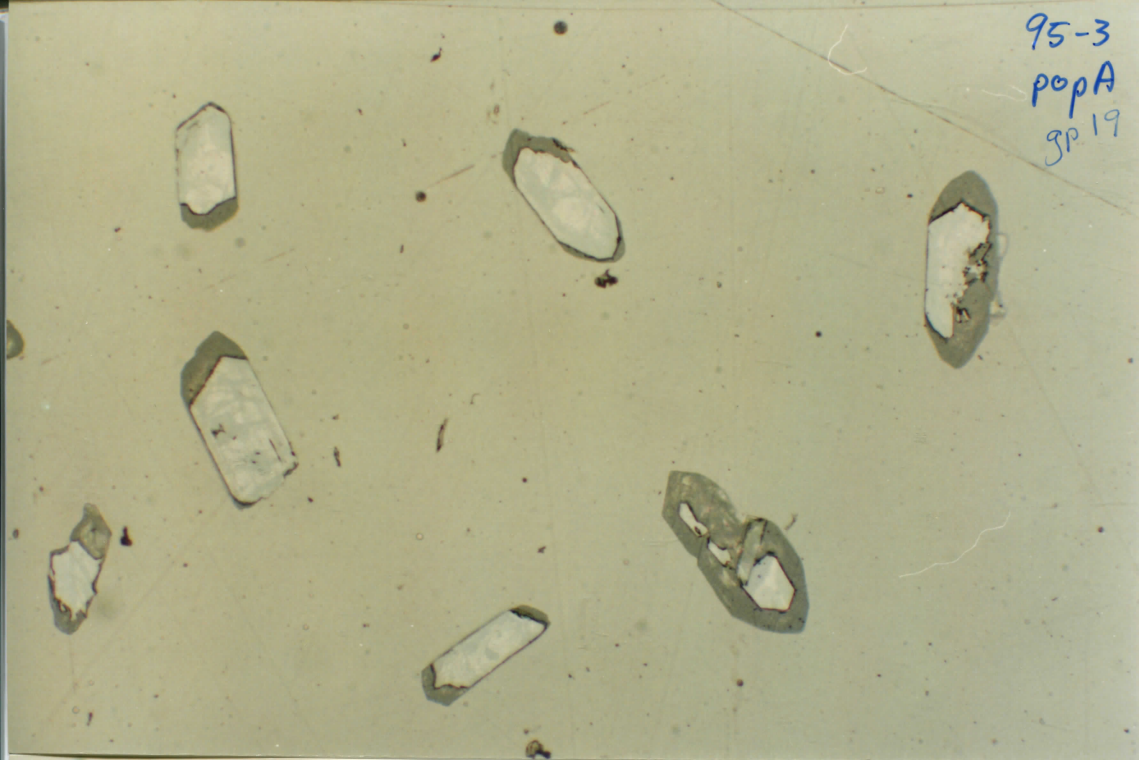


95-3  
pop A  
JP 18

22-1



95-3  
popA  
3P19



95-3  
popA  
sp20

20-1

21-1

