

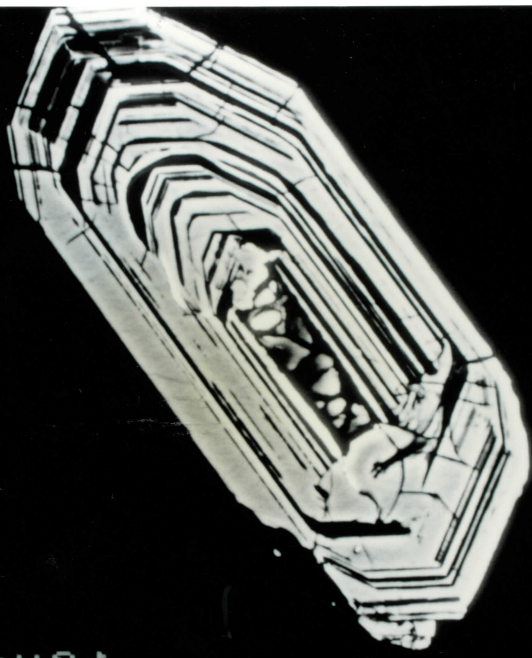
UWA 95-12, Pop A
Group 45



000444 SKN 10050 12 m

98-12, Rep A
Gp 47

-415-Photo



000412 S2K2 X 100 12mm



Q5-12. Pop A. Gp 48
417 photo

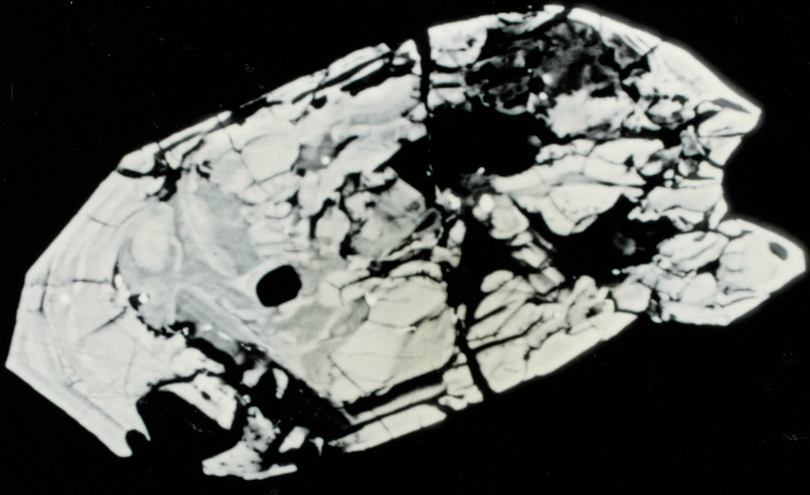
000417 52KN — XE00 105m 12mm

95-12. Pop A
Gp 43. Grain 20
Photos 449, 206, 207



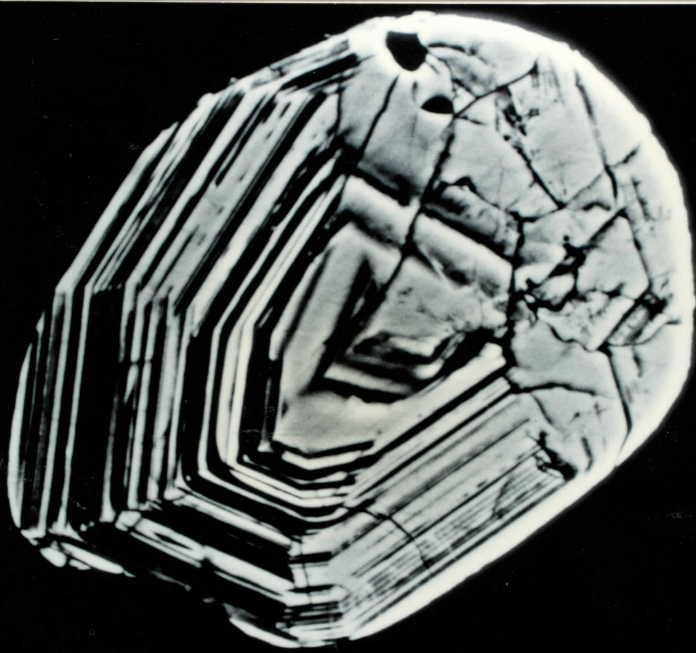
X 04 50 1
mm 1 00

000440



000485 S2KN — X100 105m 12mm

95-12,
Pop A
Gp 44
Photo.
440

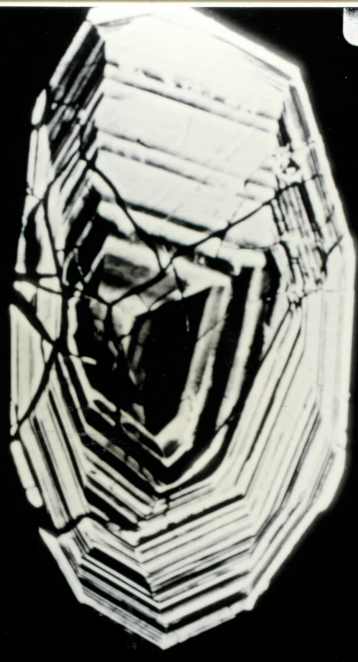


000440 S2K1 X1.10 105m
mm 1 001.1X

95-12, Pop A
Photo 468, Gp 41

Try new spot
towards top of
photo. - abandon
157204.

Note: this =
covered area
in reflected life,

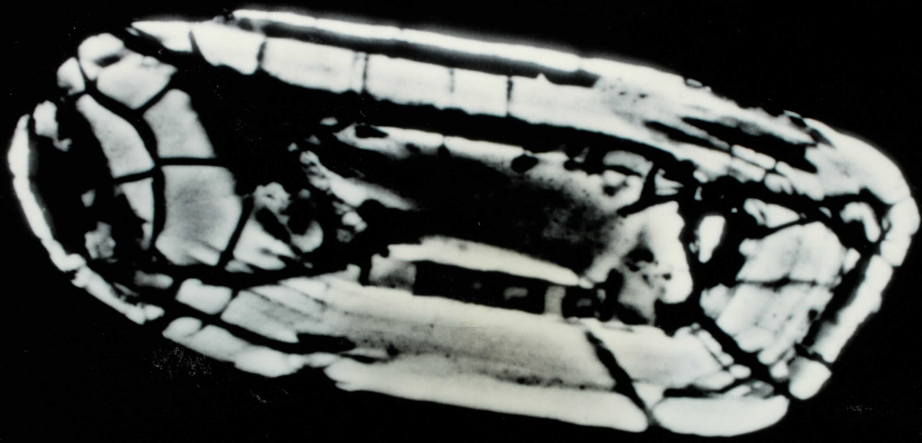


000468 S2K1 X100 12mm

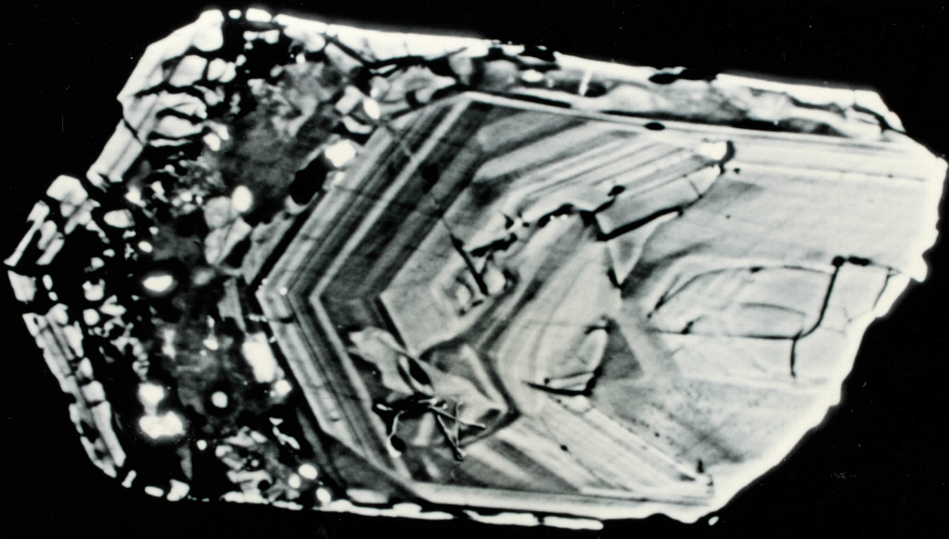
95-12, Rep A
Photo No
465
Group 41



000462 SKN — X100 12mm
1053



000489 52KX 104m
X1.700 12mm



000423

SKN

X 100
520 E

mm 12

95-12, Rep A
CP 54

475



000452 SKN 1050 12mm

95-12, Pop A, Cp 48

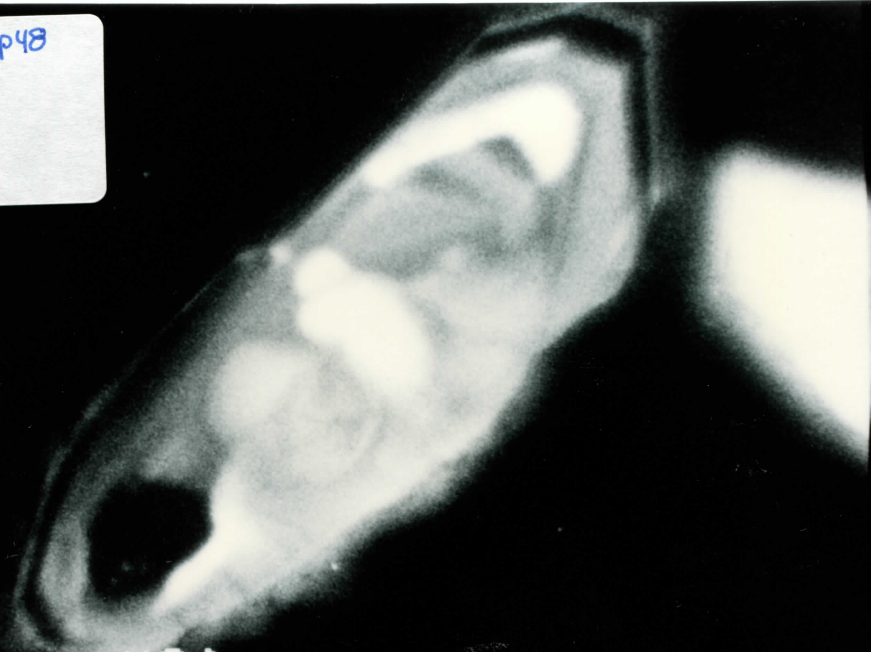
418.419



000418 S2K1 X1000 12mm 105m

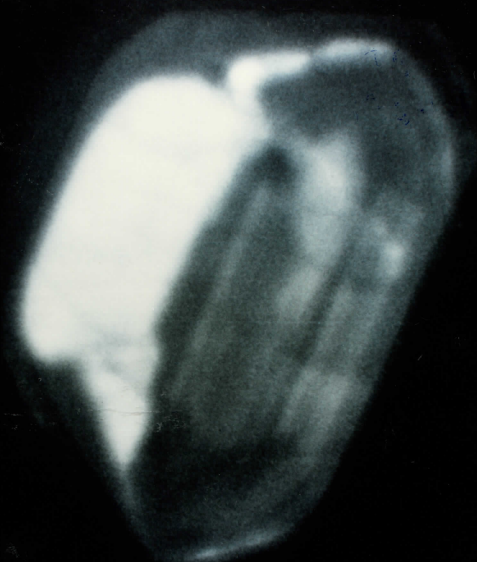
95-12, Pop A, Cp 48

418.419

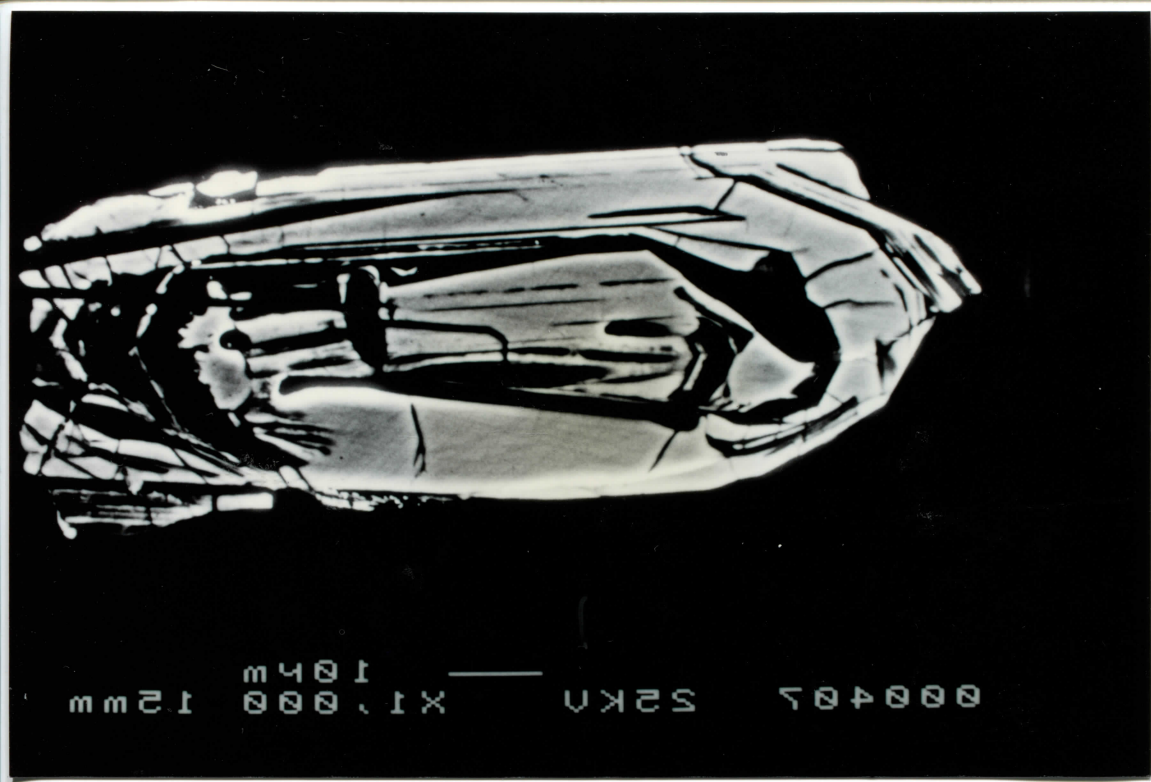


000418 S2K1 X1000 12mm 105m

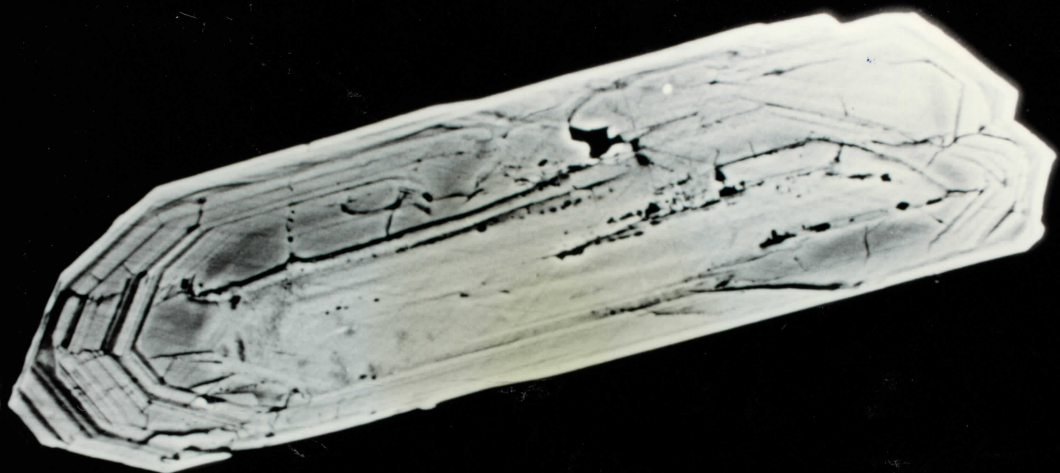
UWA 95-12
Gp 51, Cron 7



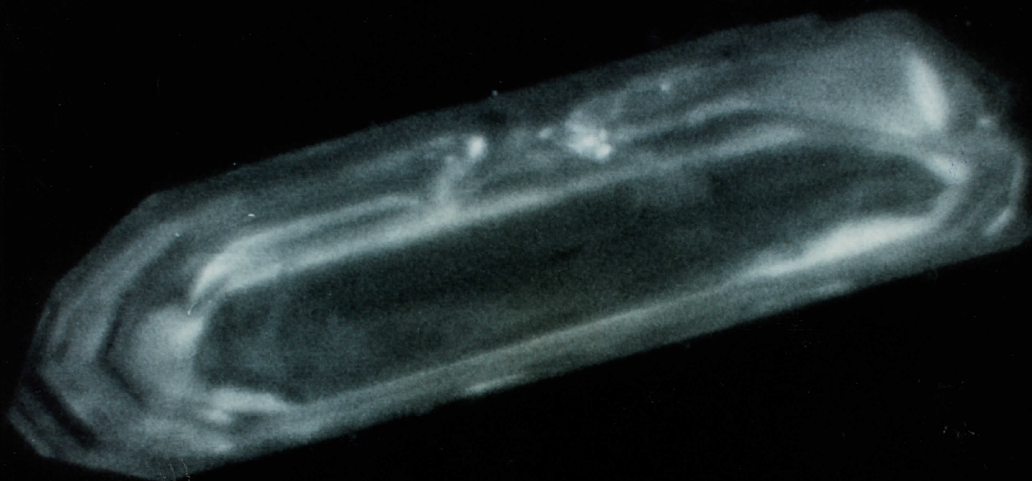
000488 52KN 10820 X 12mm
105m



000405 SKN X1 1000 12mm
105m



000484 S2KN | X020 105m 12mm



000482 S2KN | X050 105m 12mm

95-12. Pap A
Gp 53

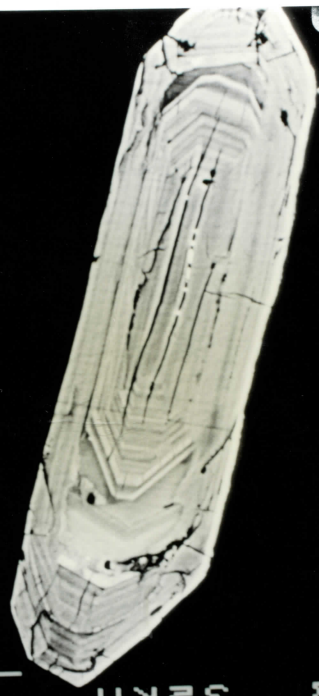
479



000479 52KN 105m
X800 12mm

95-12, Rep A
Gp 54

473/474

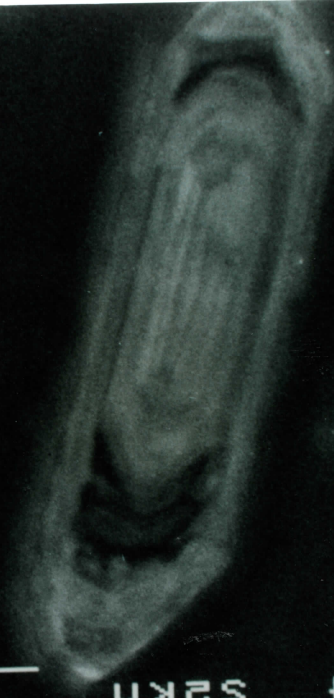


12mm 1040E 1X

000453 52KN

95-12, Rep A
Gp 54

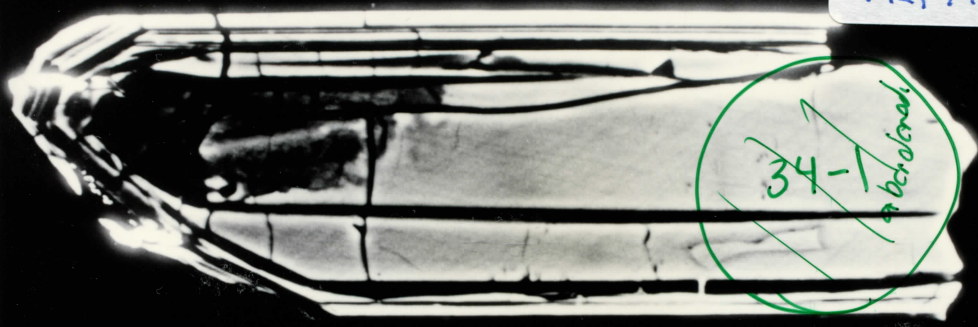
473/474



12mm 1040E 1X

000454 52KN

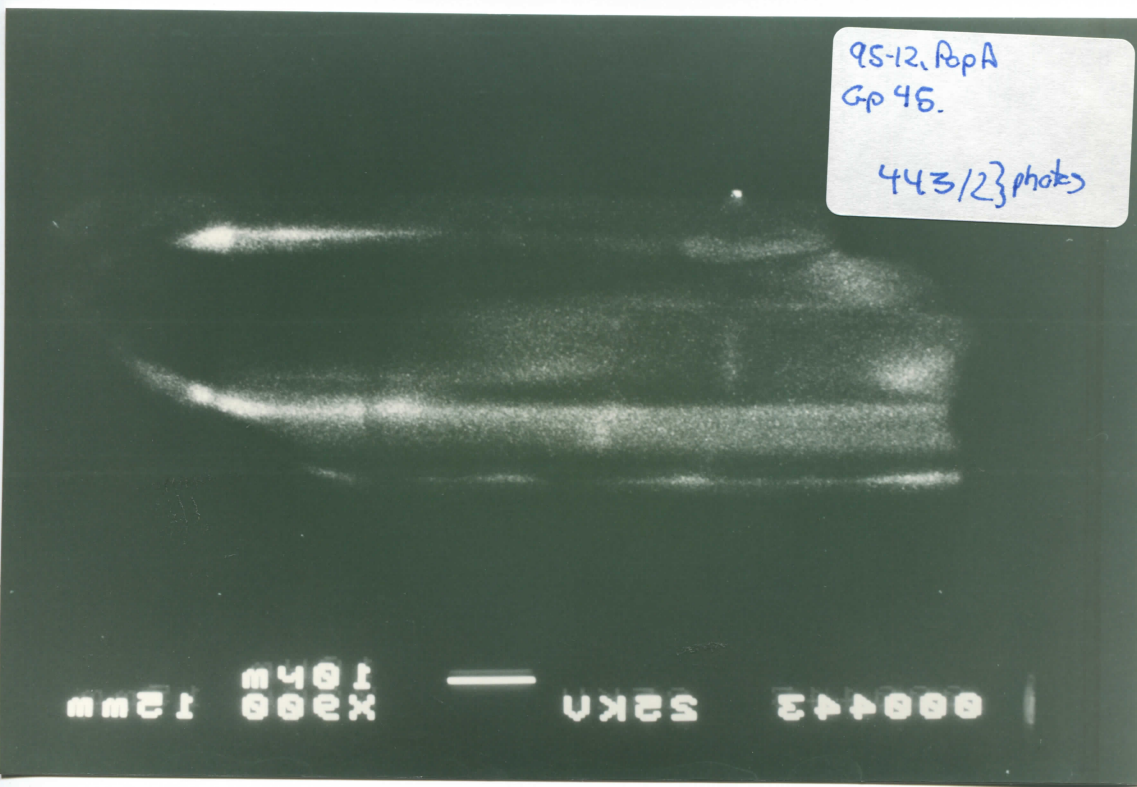
95-12, Pop A
Gp 45. New spot
core.
442, 443 } photos



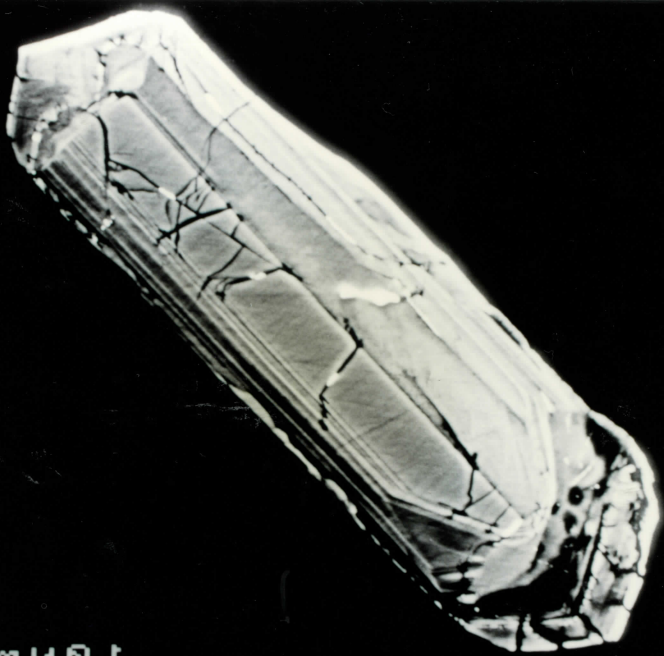
34-1
abandoned

000445 SKN — X000 12mm

95-12, Pop A
Gp 46.
443/2 } photos



000443 SKN — X000 12mm

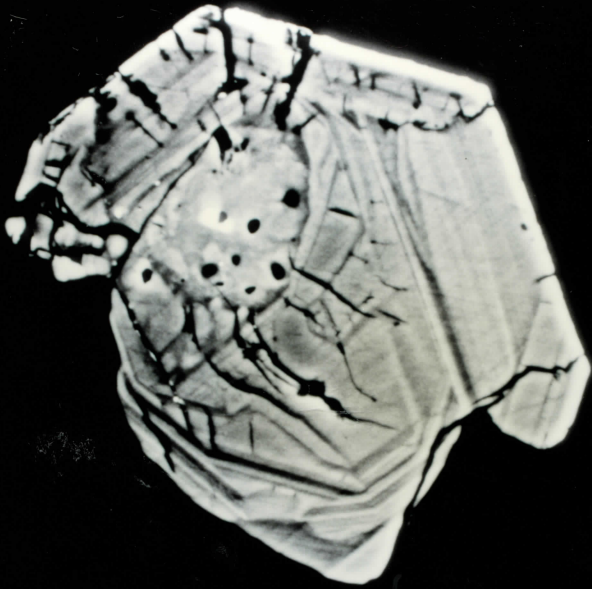


000480 S2K2

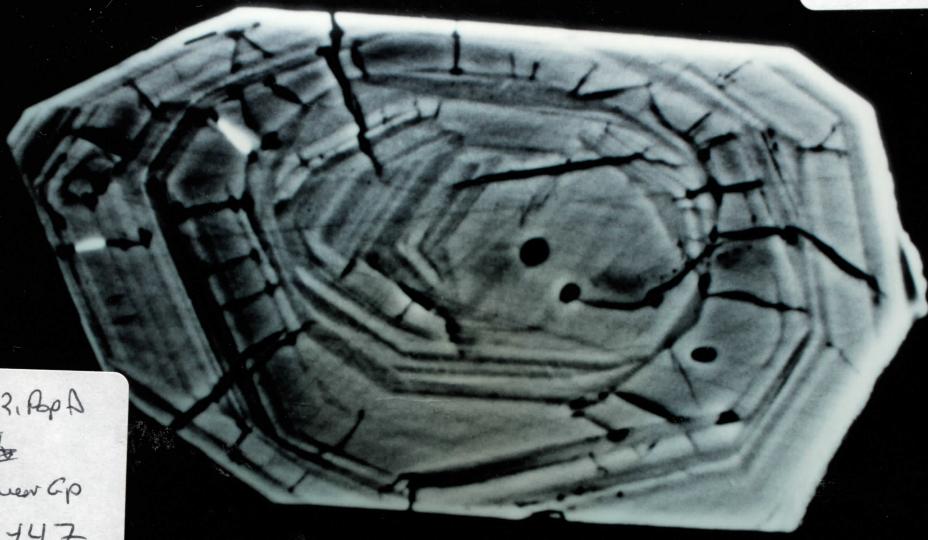
1X
500
3

mm 1 12 m

95-12, PopA
Gp 41



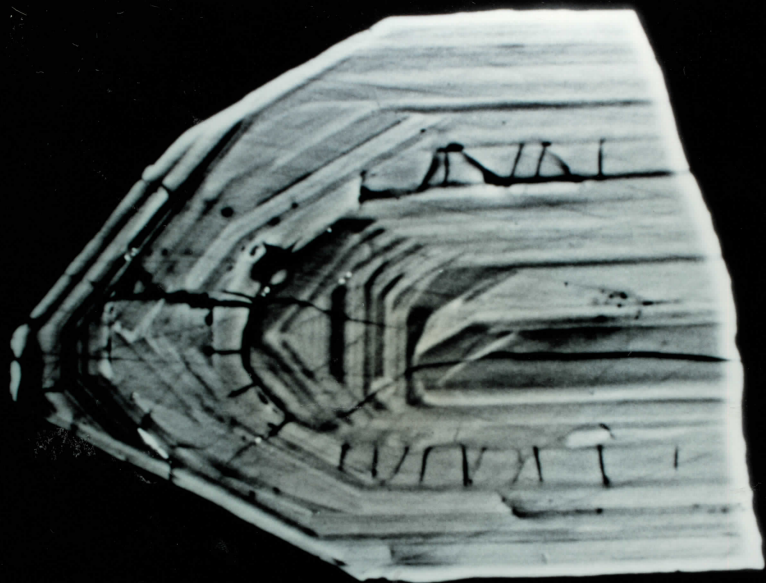
000450 S2KN X1.000 105m mm21



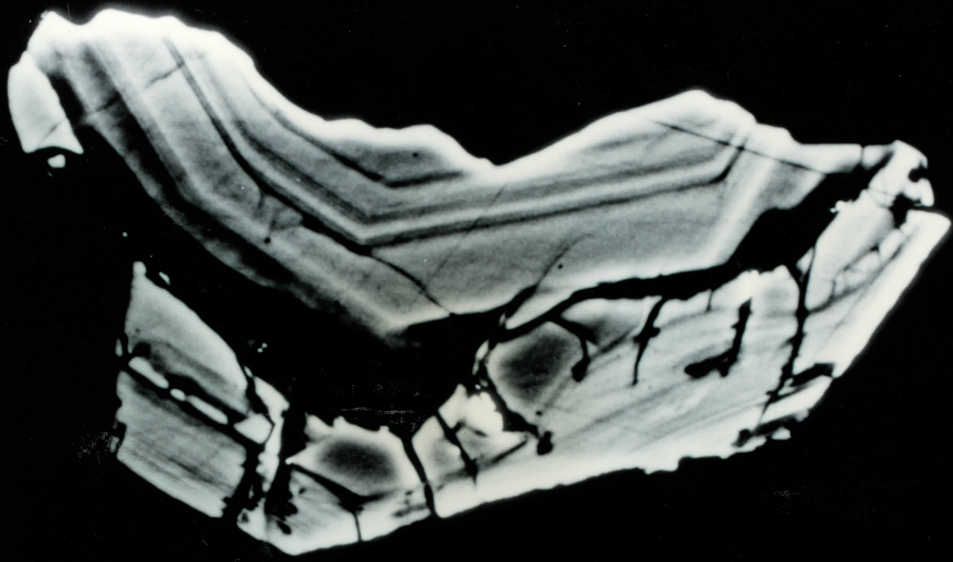
95-12. App A
~~Sp~~
Between Cp
49447

#405

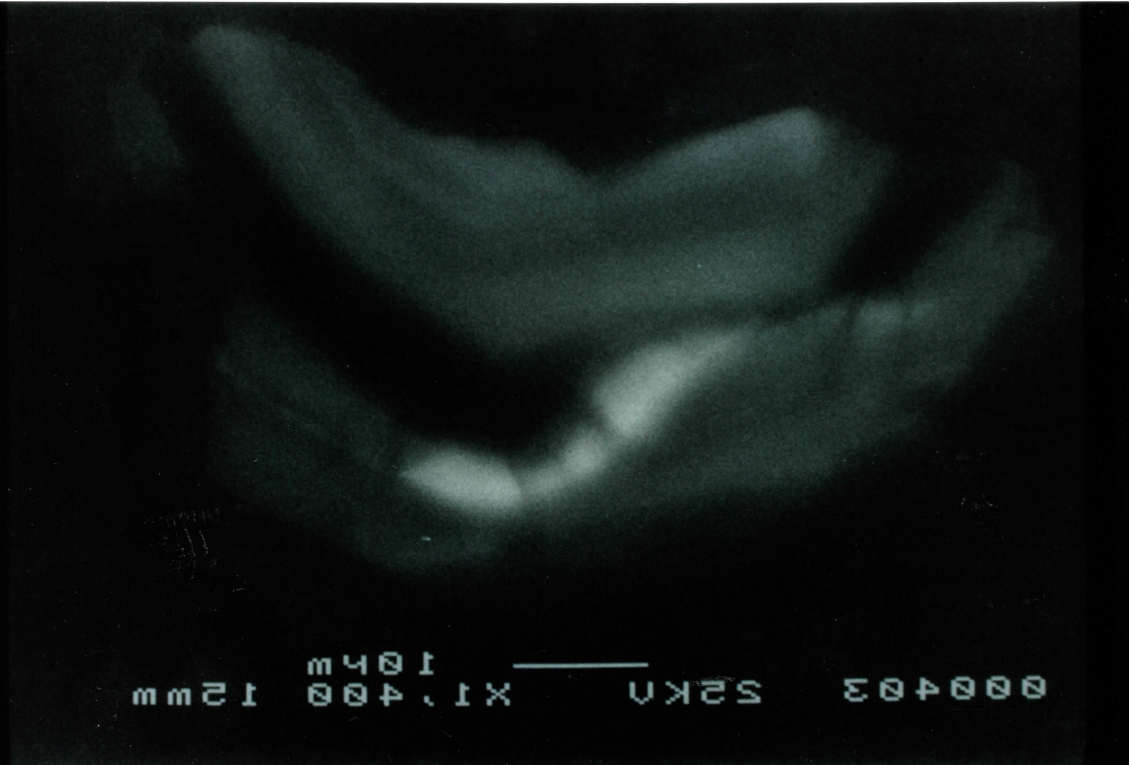
000402 52KV X1300 12mm 104m



000404 SKN XI 500 105E 12mm



000405 52KV X1,400 12mm 105m



000403 52KV X1,400 12mm 105m

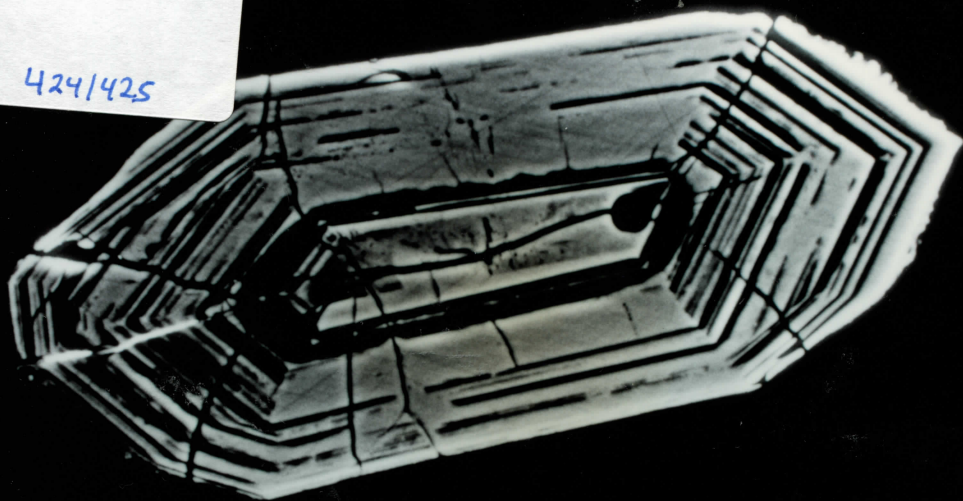
95-12. Pop A, Gp47



000411 SKN — 1005 X 12mm

95-12. Pop A, Gp 48

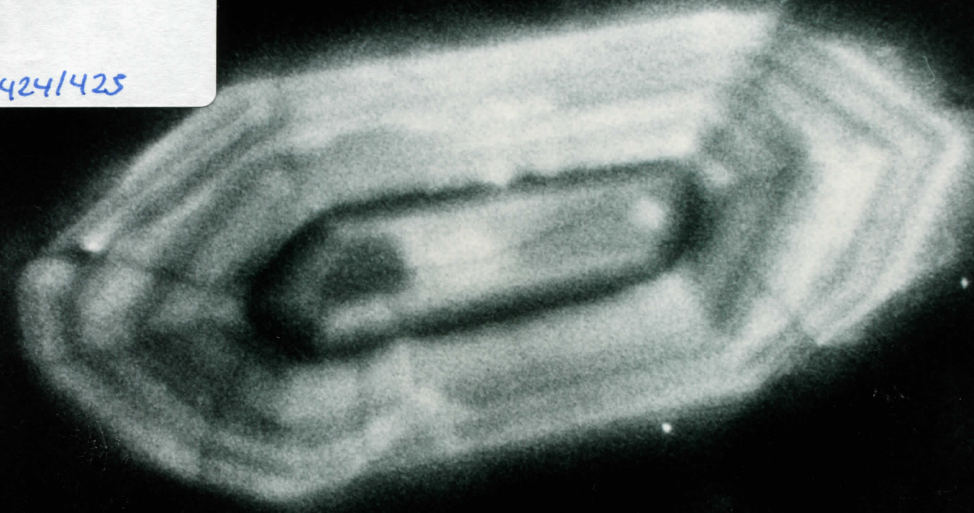
424/425



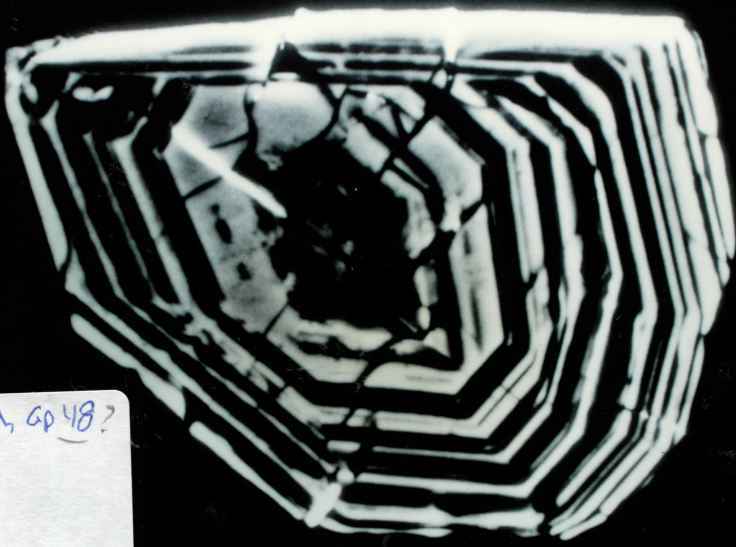
000454 52KN X820 105m 12mm

95-12. Pop A, Gp 48

424/425



000452 52KN X1000 105m 12mm



95-12. Pop A, GP 48?

Pop 48 ?

00045E 52KN X1.500 12mm 105m

98-12. Pop A, Gp 48

416

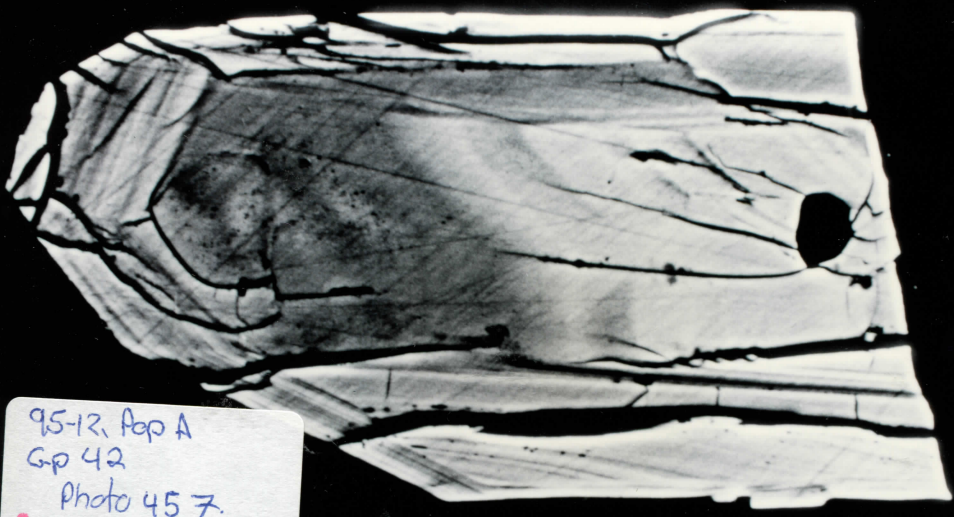


000416 52KN — 105m X820 12mm

95-12, Pop A
Grain 28
Gp. 48.




000451 SKN — X 1020 E 12mm



95-12, Pop A
Gp 42
Photo 457.

000425 52KN 105m 12mm



9542, PpA
Gp 42

may be
radiogenic
because causs
almost

00042E 52KN — X020 105m 12mm