

UWA 95-12
Pp A
Sp 41

30-1
469

abandoned
common Pb

4-1
4-2
4-3
97h

468

59h5

462, 464

470

467

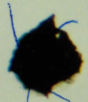
471
5-1
5-2
5-3, abandoned
common Pb

467
23-1

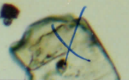
42 + 204 abcd



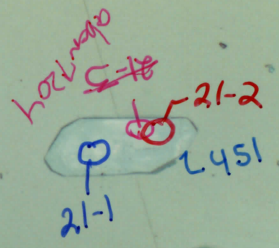
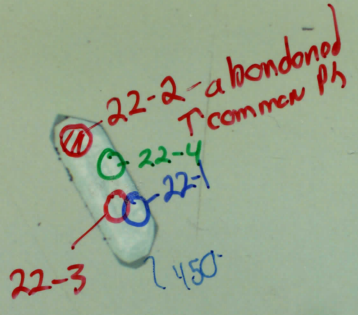
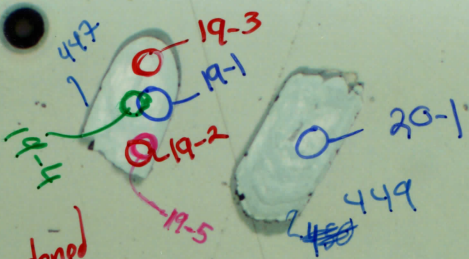
Grain #42



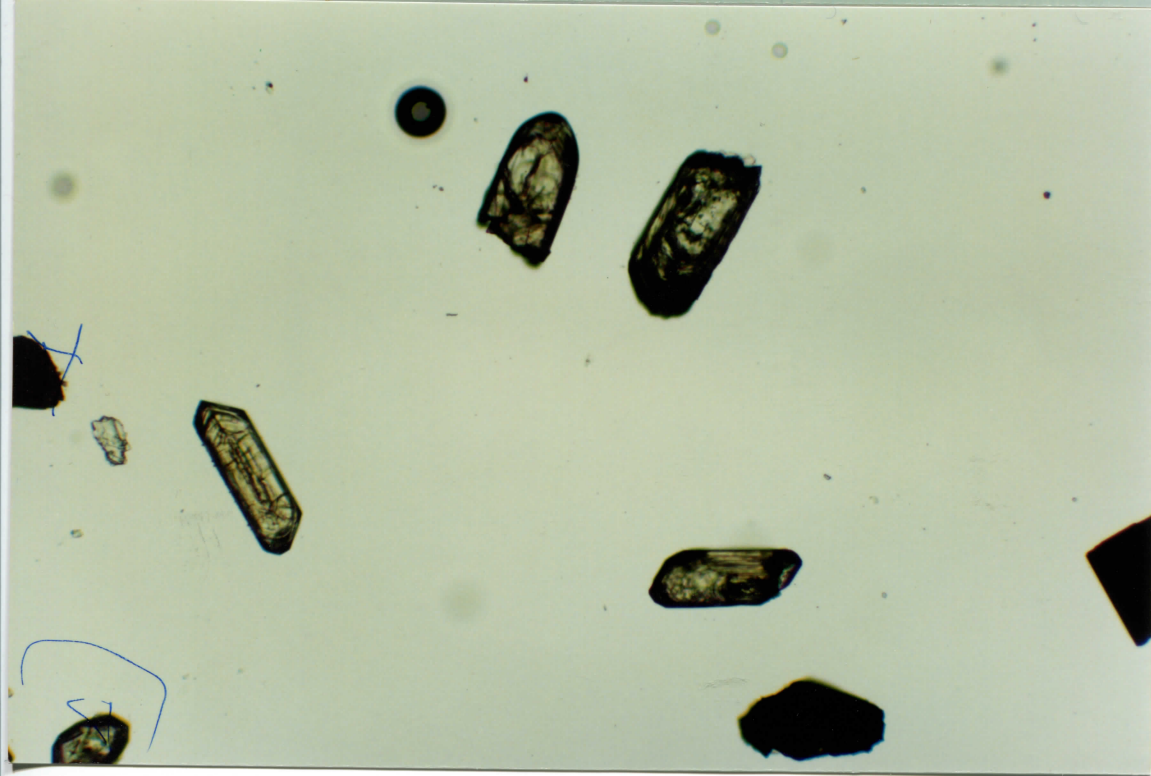
Grain #42



LWA 95-12
Pop A
gp 43

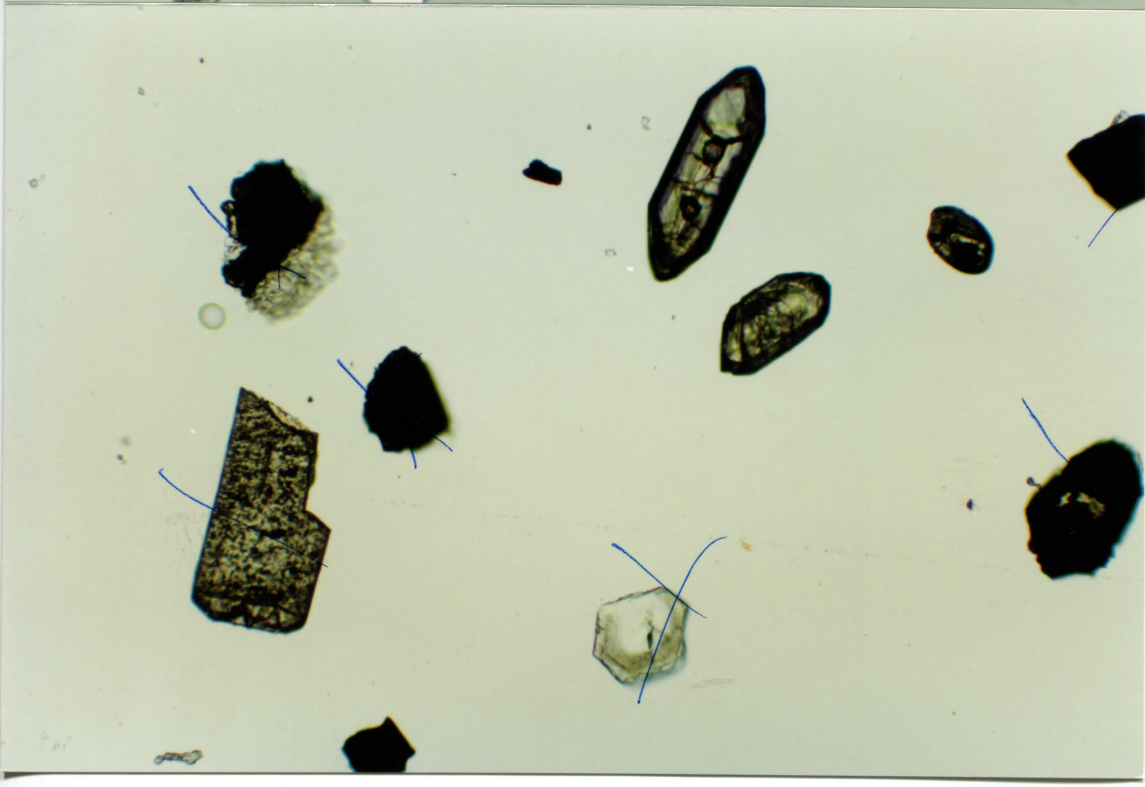
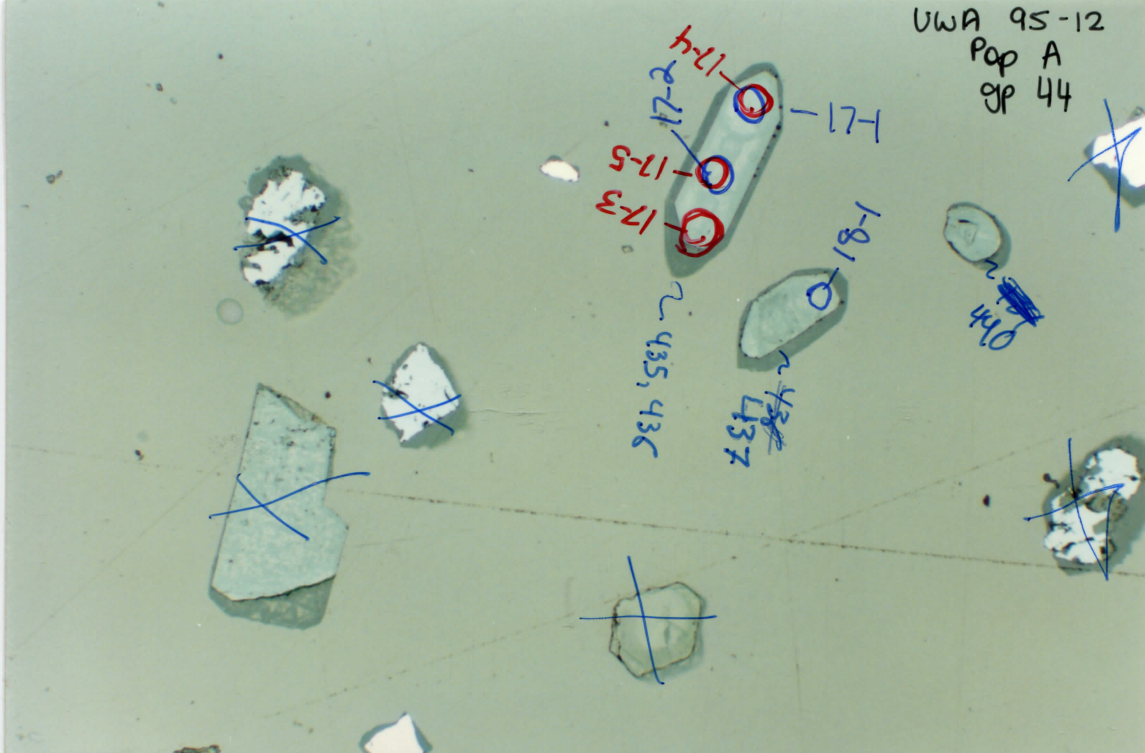


on GP 42



UWA 95-12
Pop A
gp 44

17-1
17-4
17-5
17-3
17-1
18-1
435, 436
437



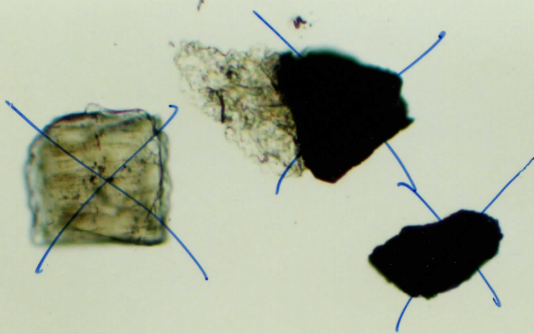
VWA 95-12
Pop A
gp 46

35-1
432
-Excellent
35-2

36-1
429
429

6-2
abandoned
6-1
6-3
6-5
6-6
430

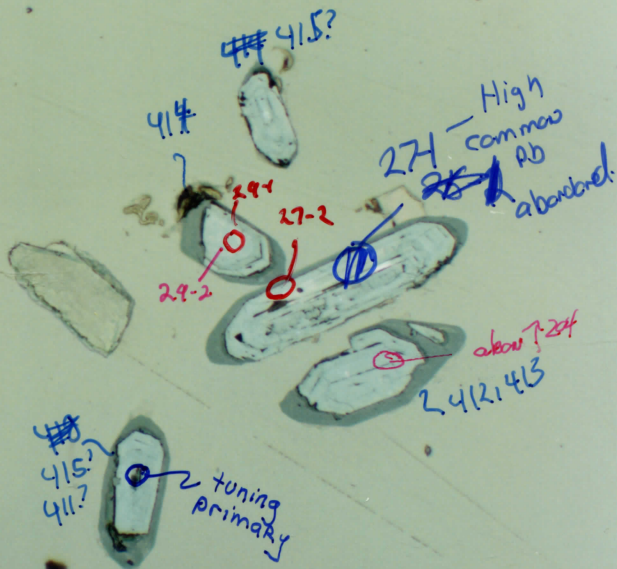
on gp 44



on photo
Cp44



UWA 95-12
Pop A
gp 47



UWA 95-12
Pop A
gp 49

-395

10-7

390, 391

10-3

10-1

10-4-1 No result.

10-2

10-5

10-0

80

-397.8

398
396
397

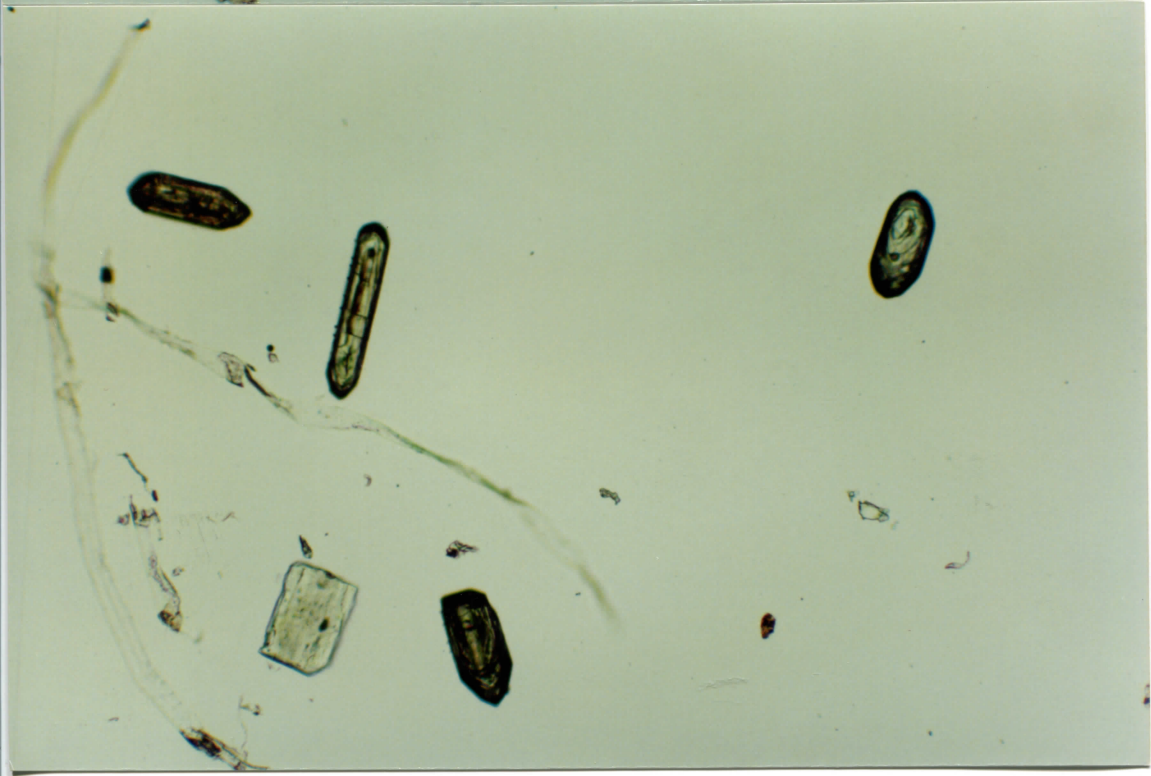
11-3

11-1

11-2

1° sign drop during analysis

11-4 → a band
TPB



UWA 95-12

Pop A

gp 50

407
-16-1
abundant
T common Ab

408

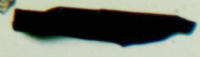
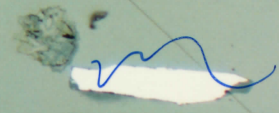
401, 402
399, 398

3-1
e-s
abundant
↑ 200-1

400, 401

~ 403, 404

39-1



UWA 95-12

Pop A

gp 51

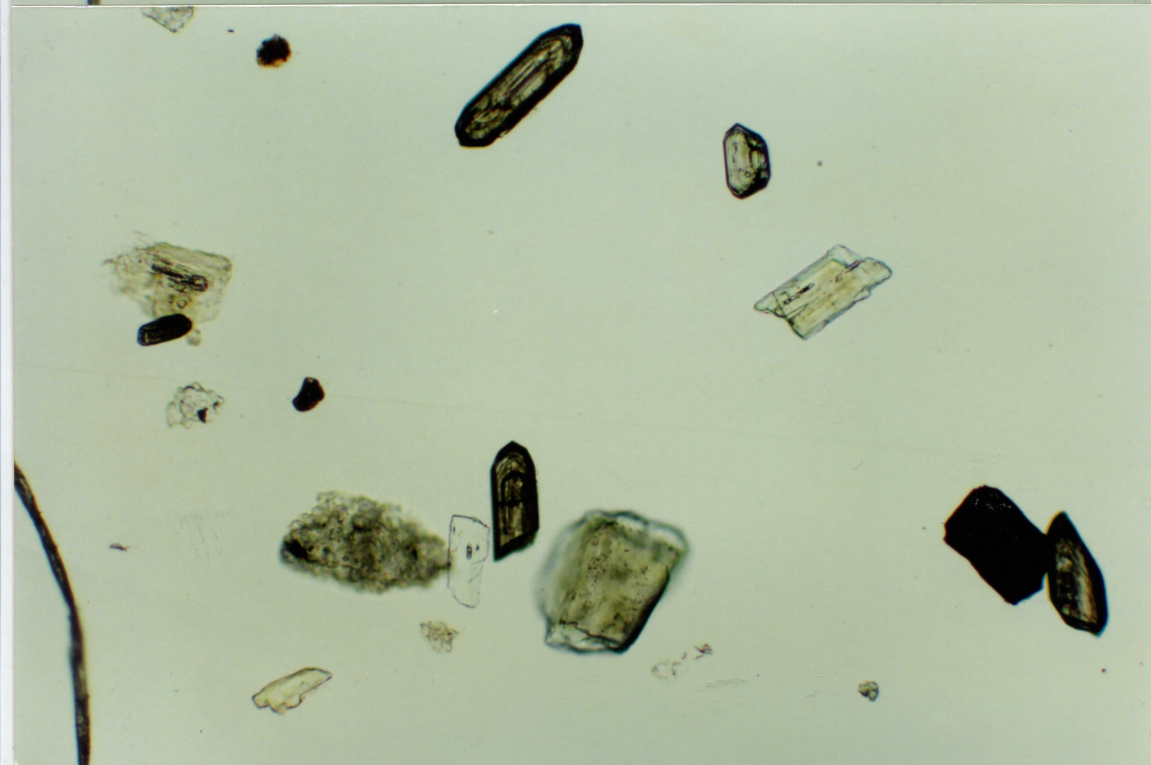
484
485
487
7-1

7-2
7-1
Abandoned. ↑ Comm. Pb
487
7-3

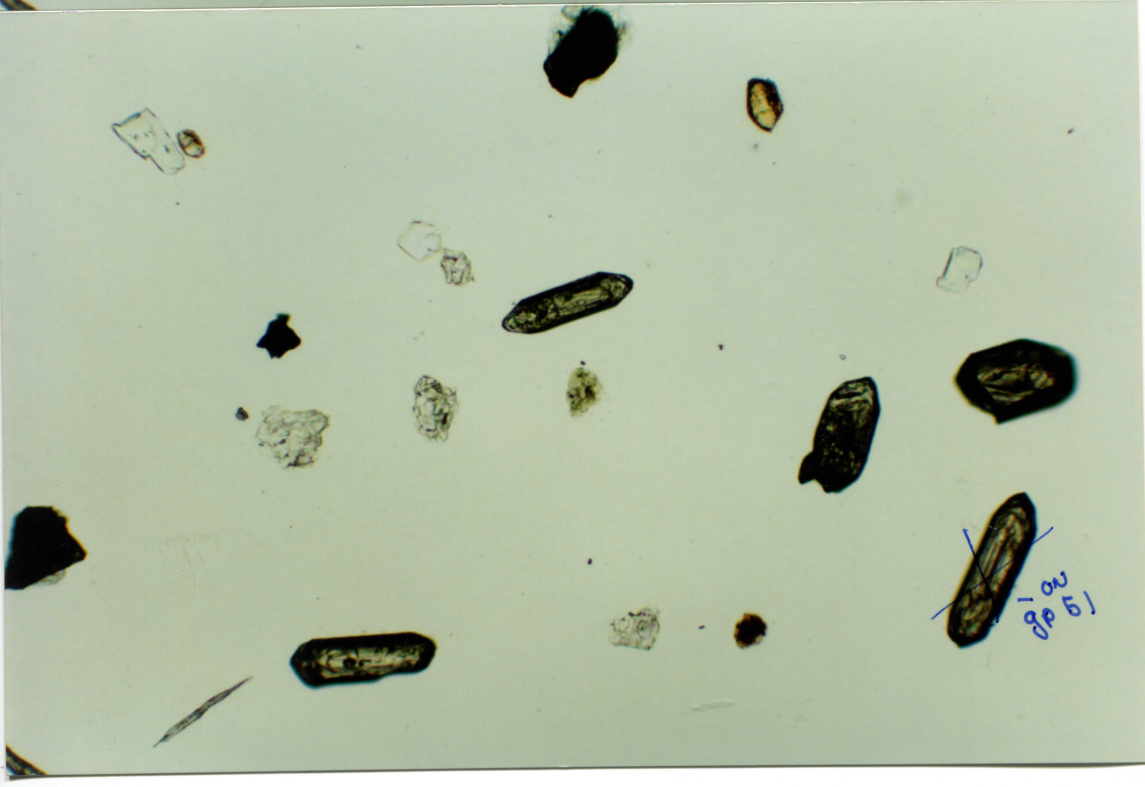
489

490
387
13-2
13-1
Abandoned ↑ Comm. Pb

491
12-5
12-1
12-4



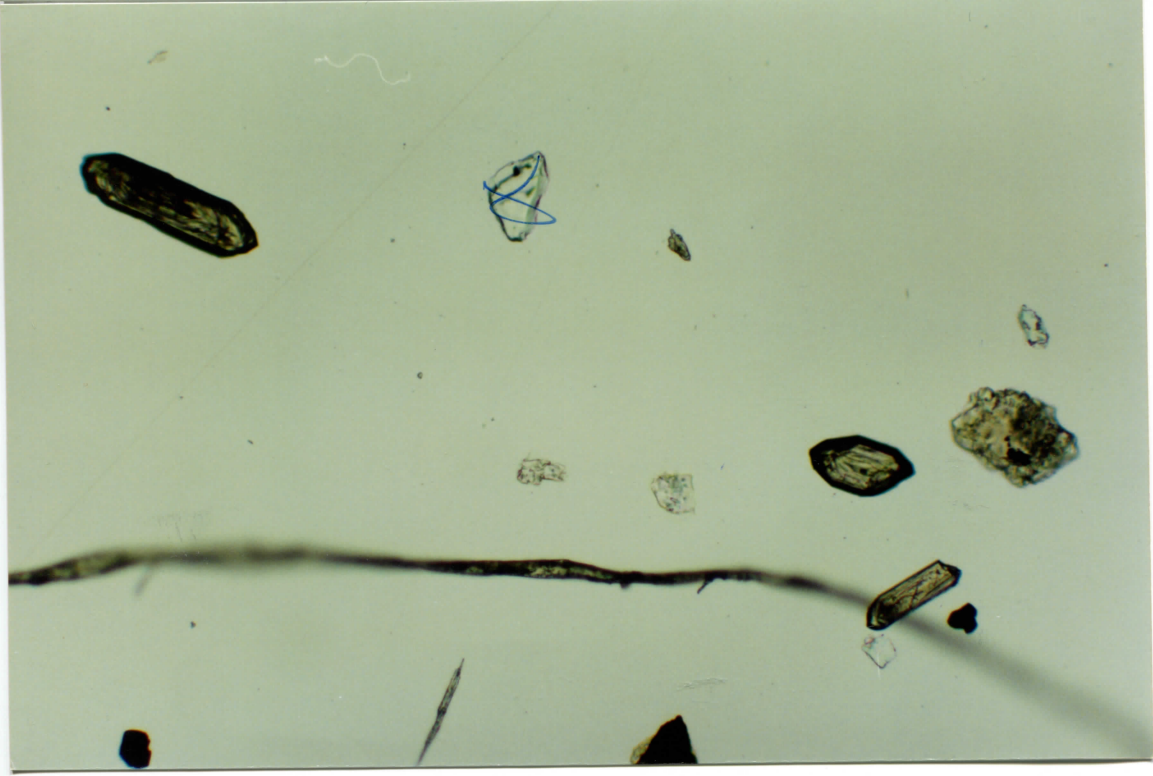
UWA 95-12
Pop A
gp 52



UWA 95-12
Pop A
gp 53

0254

477
9-1
Abandoned. ↑ Common
Pb
479
9-2



UWA 95-12

Pop A
gp 54

475

40-1
40-2

476

517

