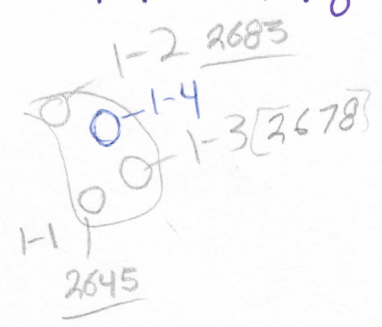
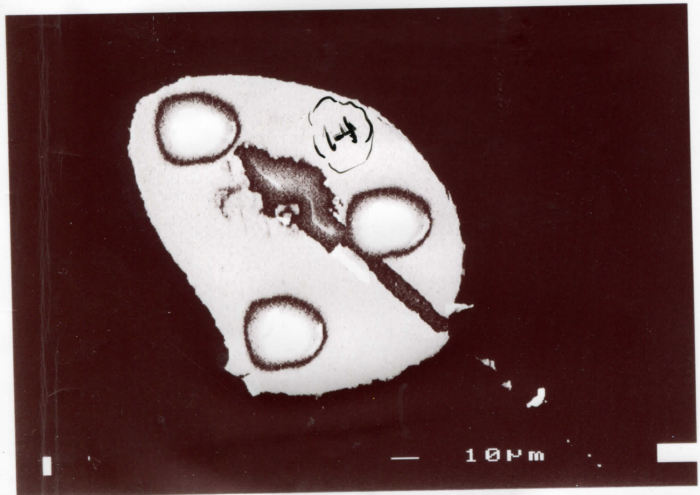


95-30: 429121z "Aphyric Porphyry"



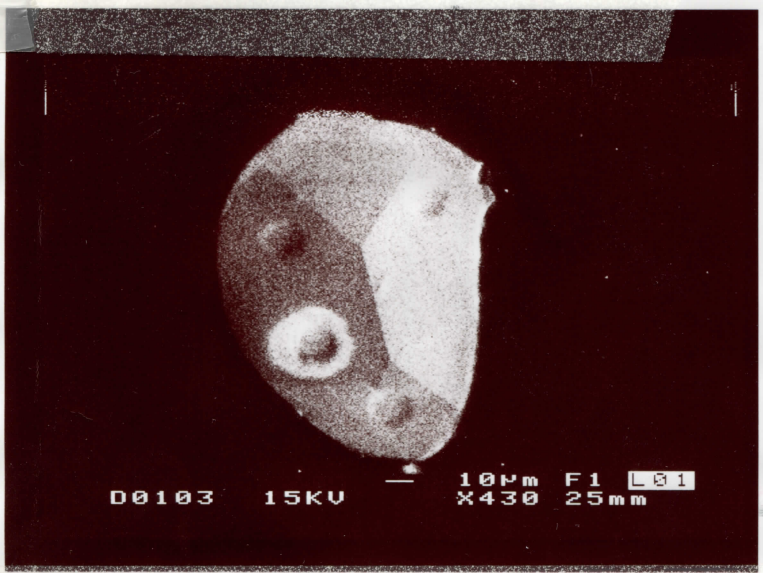
1:4: 2673ma

100um



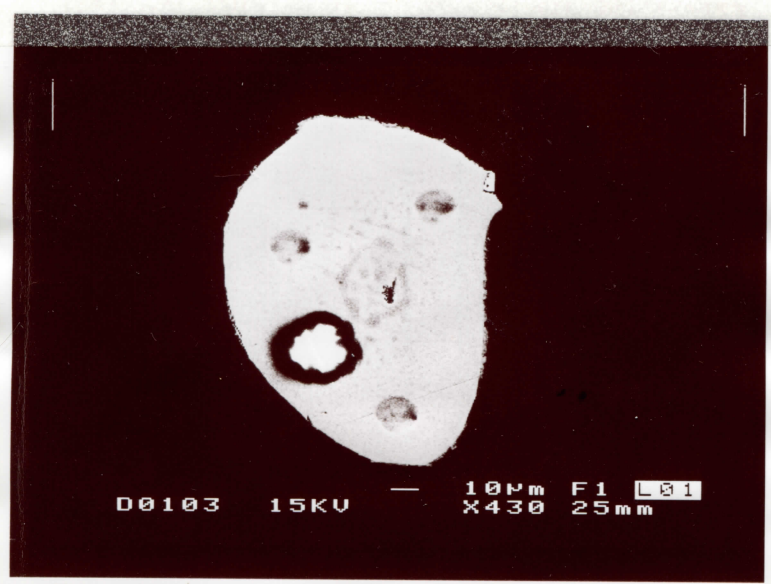
95-30, Grain #1, Cp 23. → BSE
Hard to see on SE. Bad Au coat?

39um



95-30, CL, Grain #1.

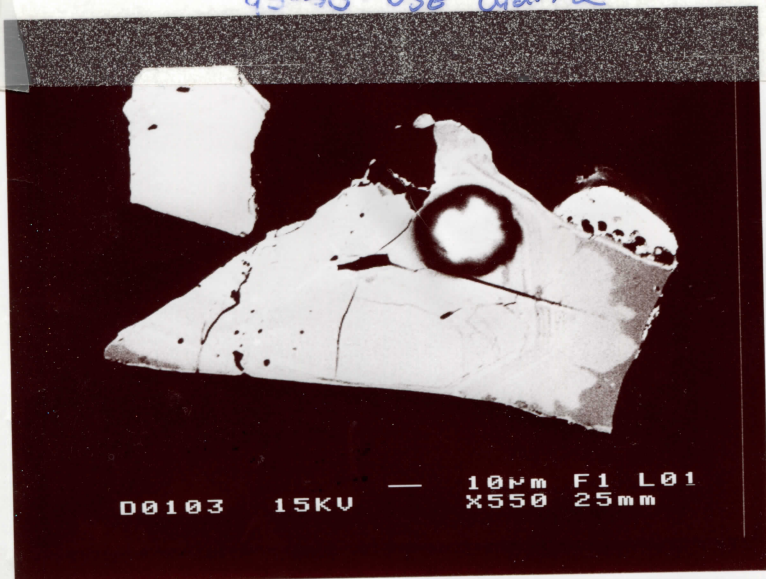
841



95-30, BSE, Grain #1,

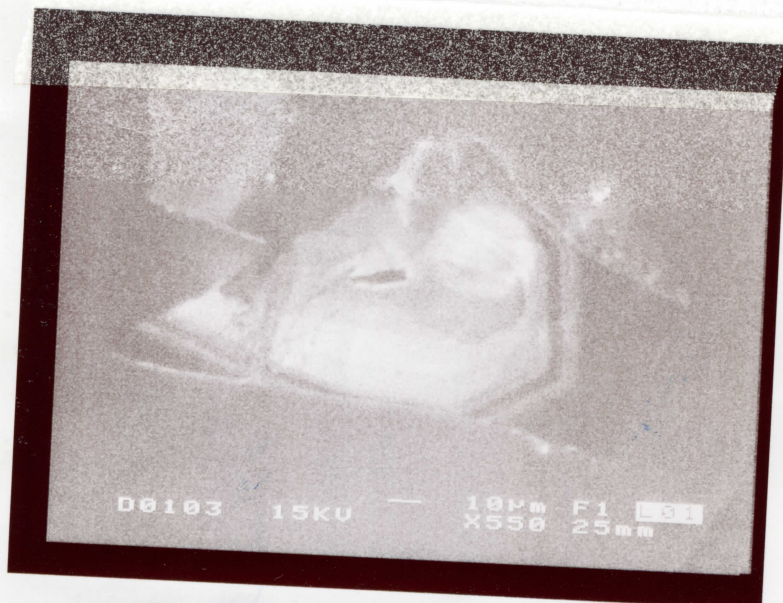
840

95-30-BSE Grain #2

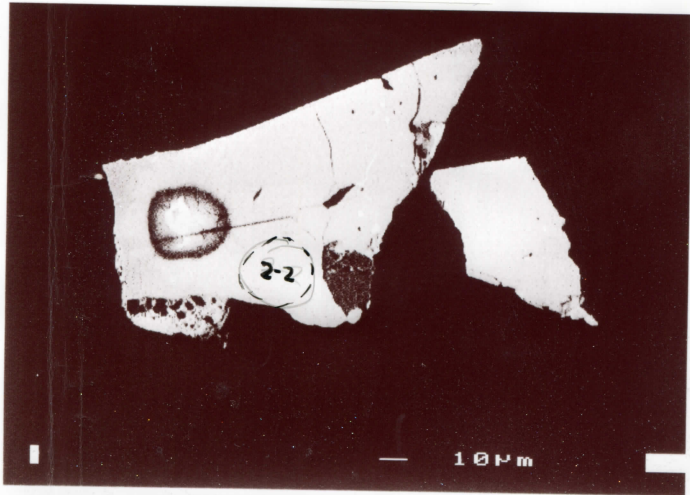


Day 2

95-30, BSE, Grain #2



95-30, Grain #2, Cp 23 CL 838



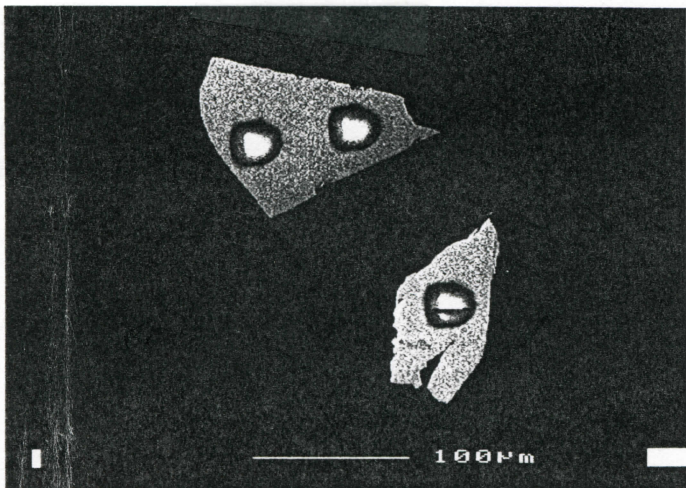
95-30, GP 23, Grain #2 BSE

39mm

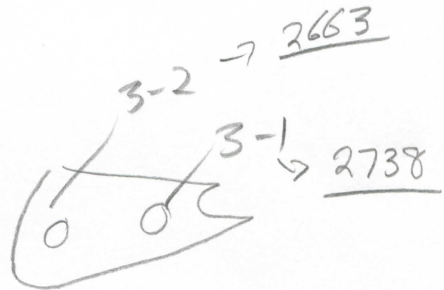
- abandoned \uparrow common Pb

- Spot 2-2: abandoned \uparrow Pb \downarrow U.

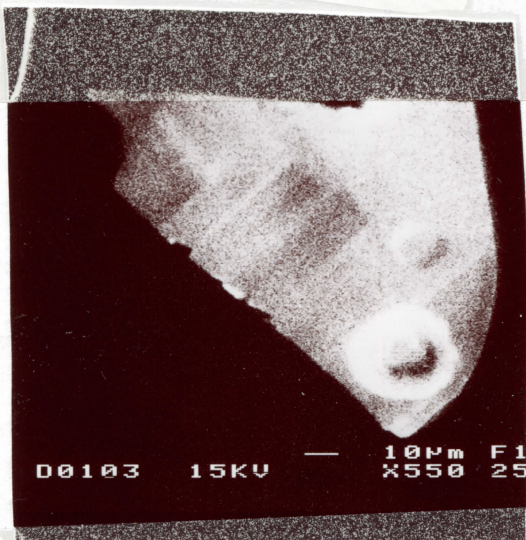
120u



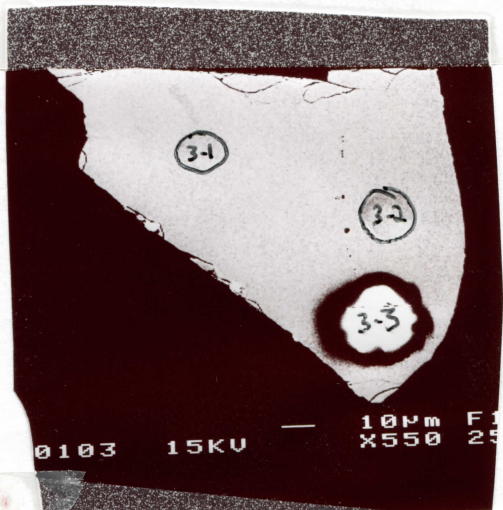
95-30, Grain 3, 16. GP 24 BSE



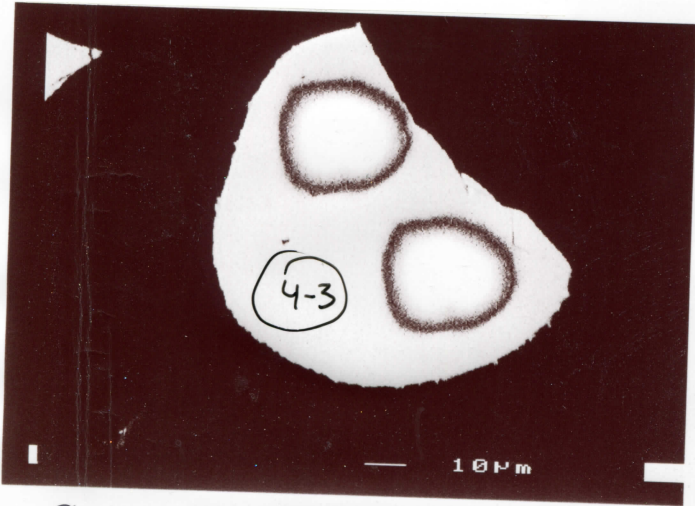
See Grain 16 for original print.



95-30, Grain #3 iCL



Grain #3, BSE, 95-30

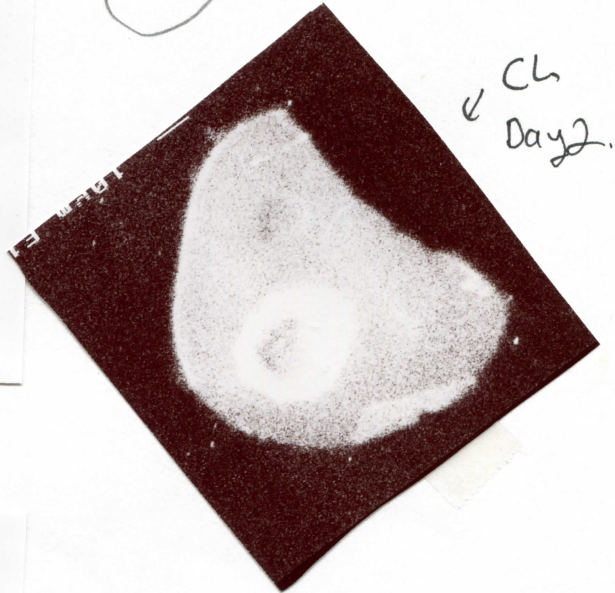


9530, Grain 4, Gp 20, BSE

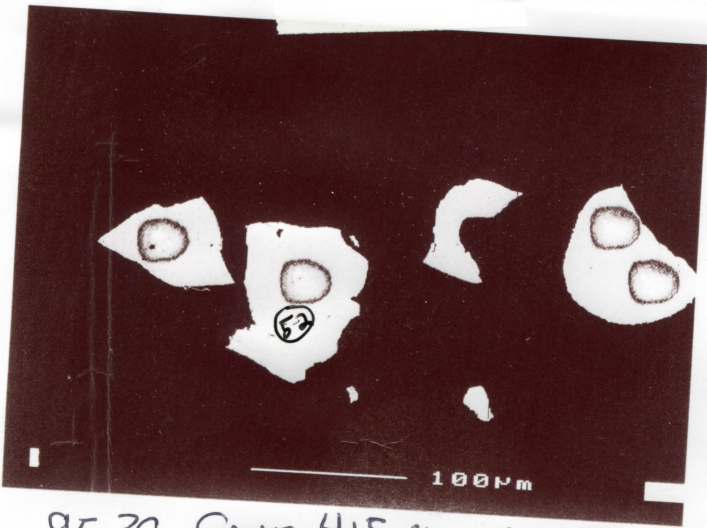
39mm

Grain 4:

O-4-2 2663
 O-4-1 2654



CL Day 2



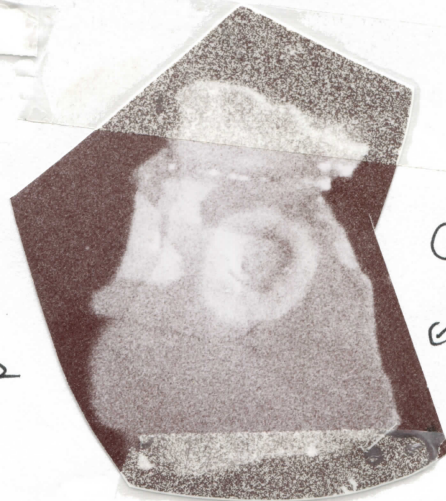
95-30, Grains 4, 5, 14, Gp 30 BSE

39mm

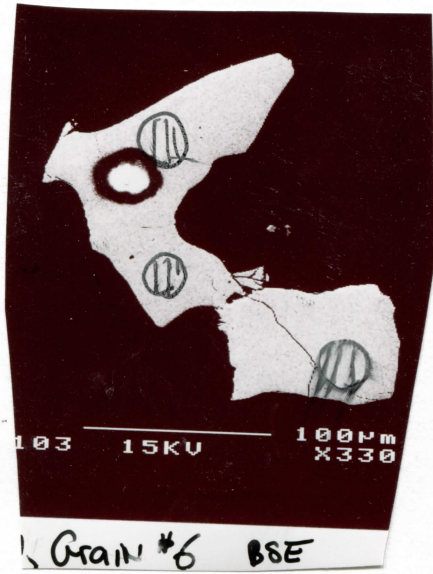
14 → 5 — 2673



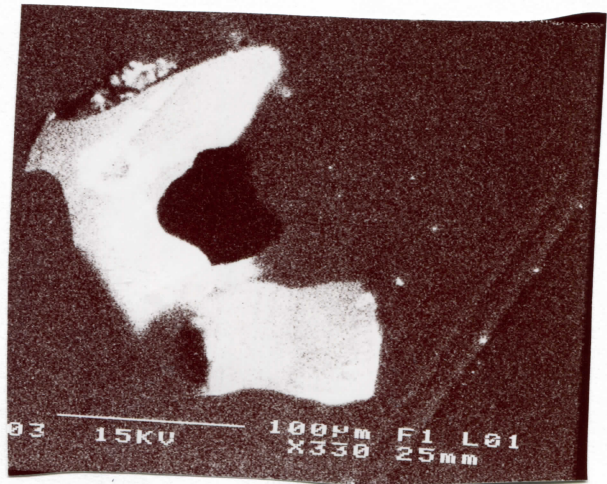
Grain 5 BSE Day 2



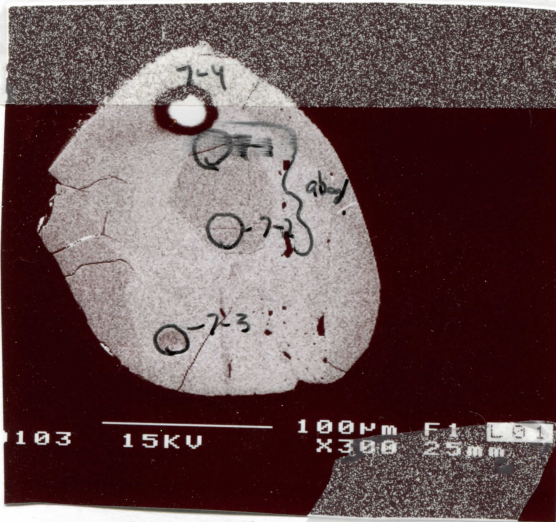
Grain 5 CL Day 2



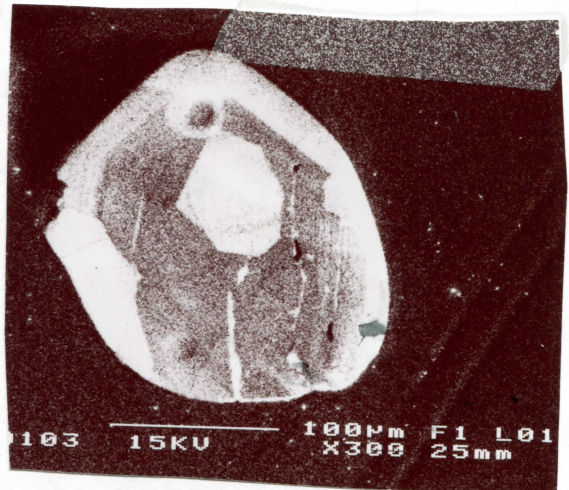
Grain #6 BSE



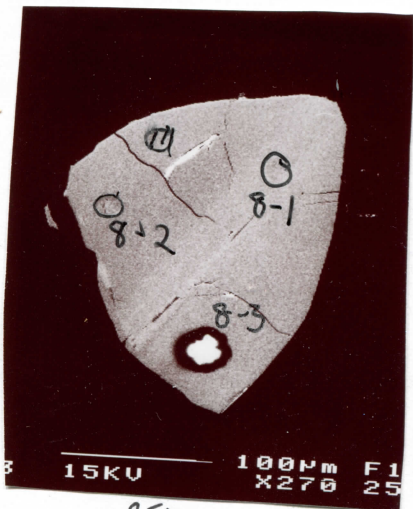
Grain #6 CL



Grain #7 BSE

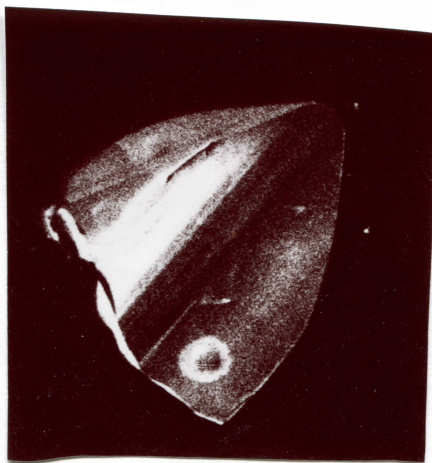


Grain #7 CL, Day 2.



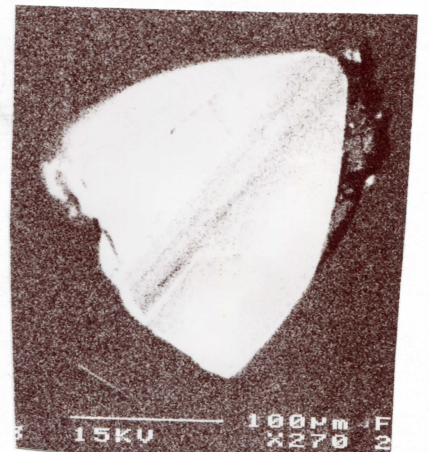
BSE

Grain #8

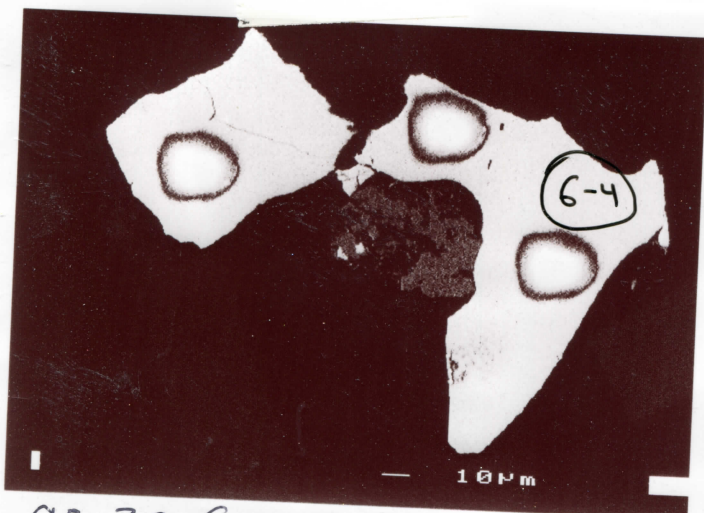


CL

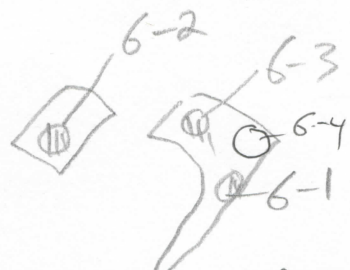
Day 2



CL

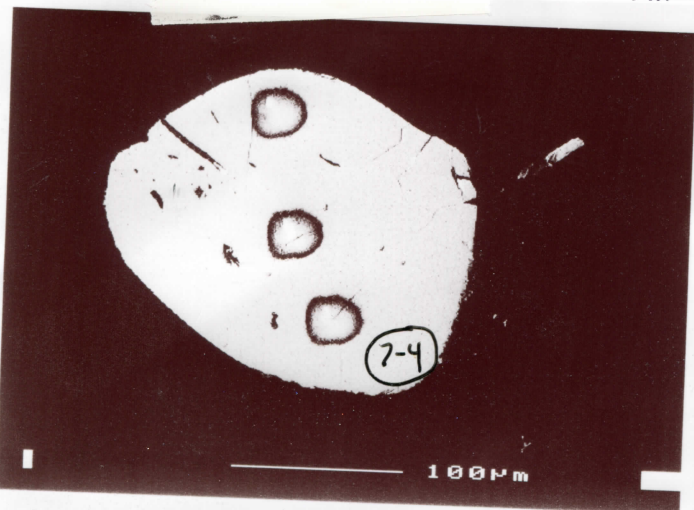


95-30, Grain 6, Gp 28 BSE 39mm

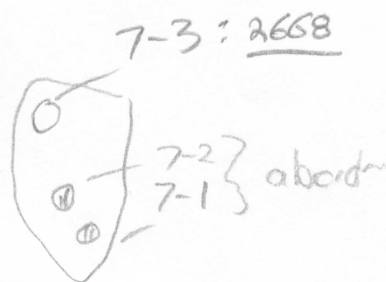


6-4: 2676 + conc, f206 = 1.67.

All abandoned
Due to π common
pb! Can't see
reason for this!



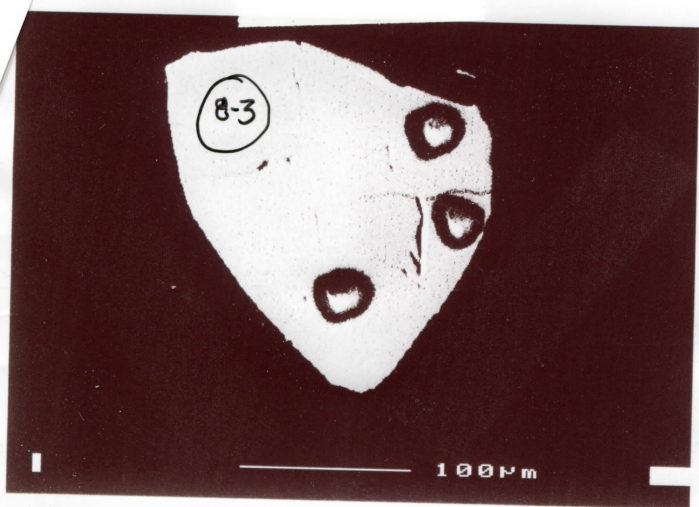
39mm 95-30, Gp 21, Grain 7, BSE



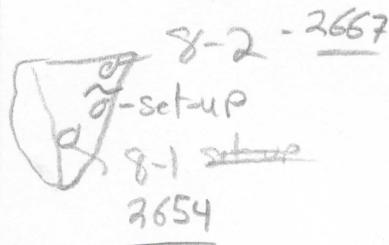
Can get new spots
on here.

7-4:

~~1890u~~
1880u

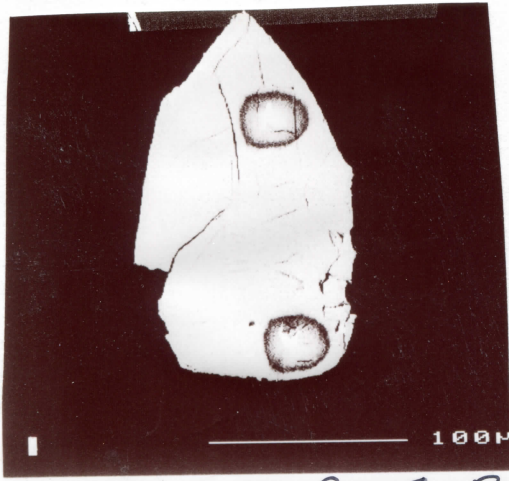


95-30, Gp 19, Grain #8 BSE
15mm



2654

1800u

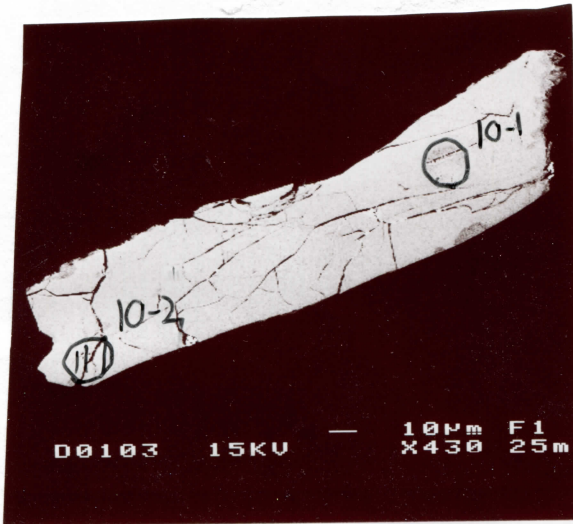


95-30, Gp 19, Grain 9, BSE



Both spots abandoned TPb.

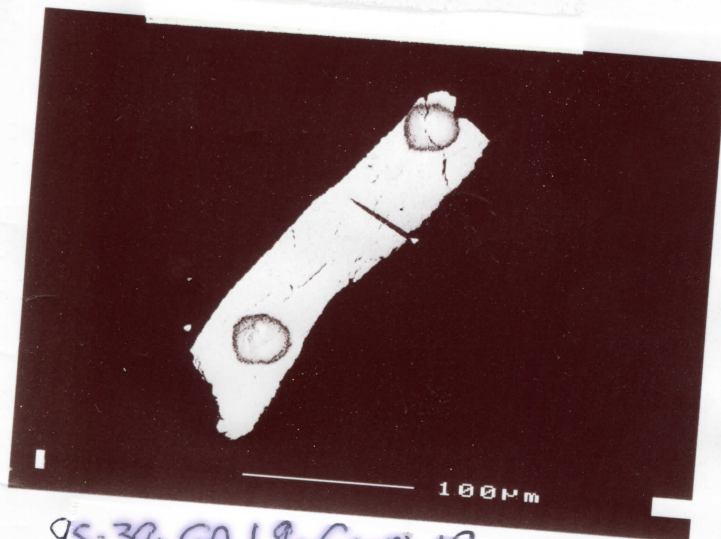
Grain #9, Day 1 + Day ↑ 2.



95-30, BSE 80, Grain #10



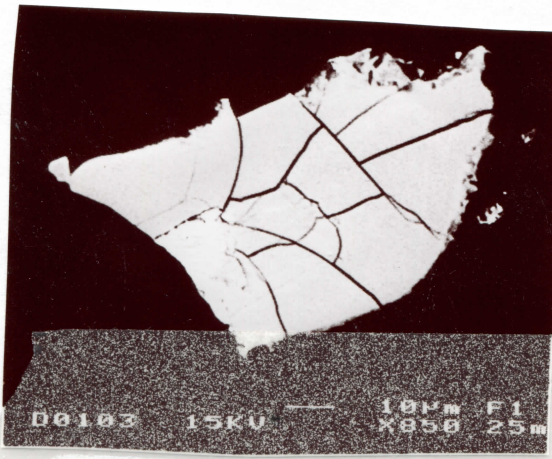
Ch, Grain #10



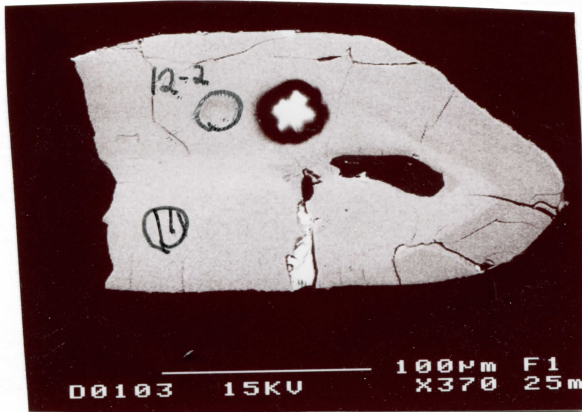
95-30, Gp 19, Grain 10, BSE 29mm

10-2 abandoned
10-1 - 2650, but f = 2.3%

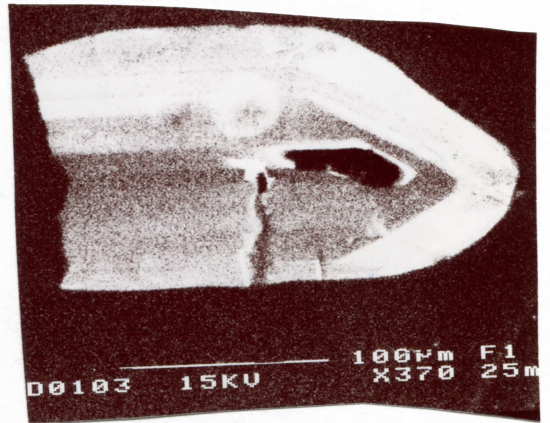
185µm



Grain #11
abandoned TPb

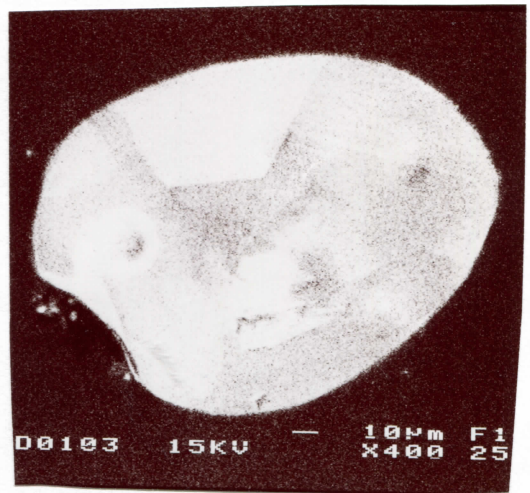
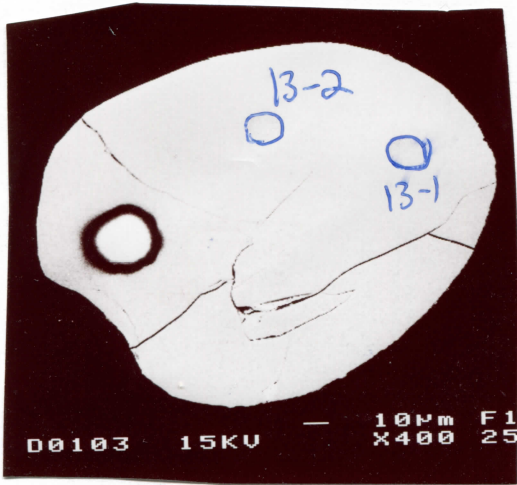


BSE

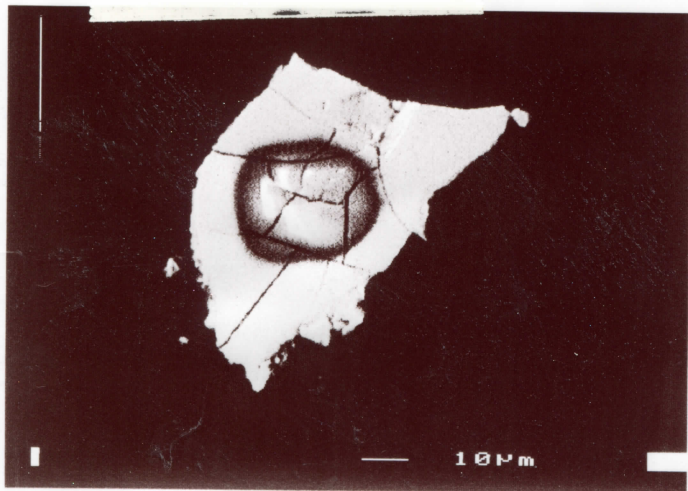


CL

Grain #12. Day 2.



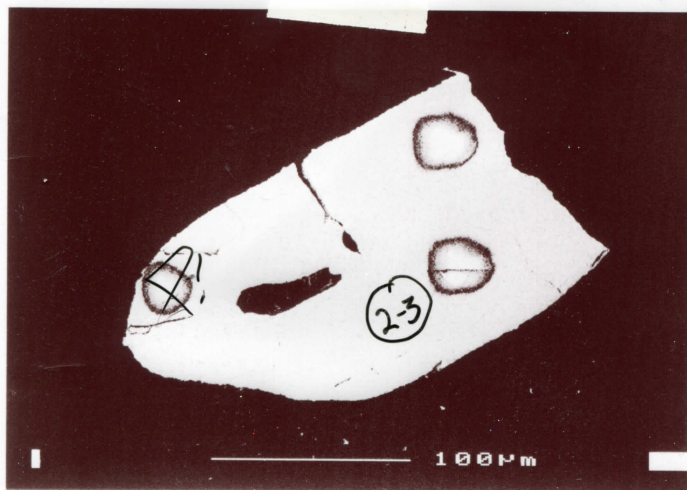
Grain #13, Day 2 photos



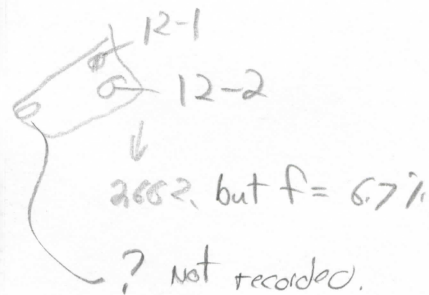
95-30, Grain 11, Gp 18 BSE 39mm

abandoned T 204

60µ

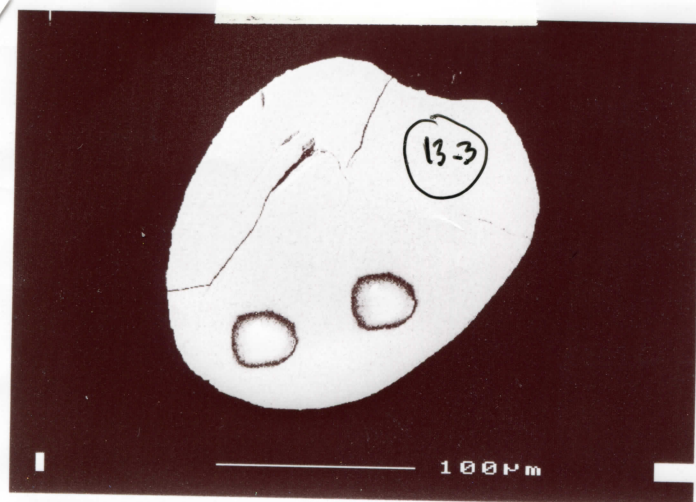


95-30, Gp 17, Grain 12, BSE, 39mm

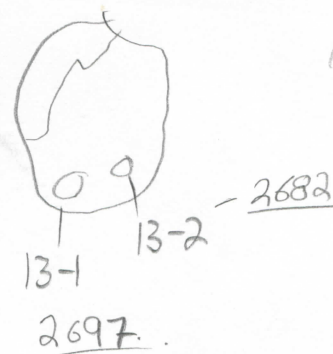


Don't know why bad grain to analyse. Like Grain #6!

200µ

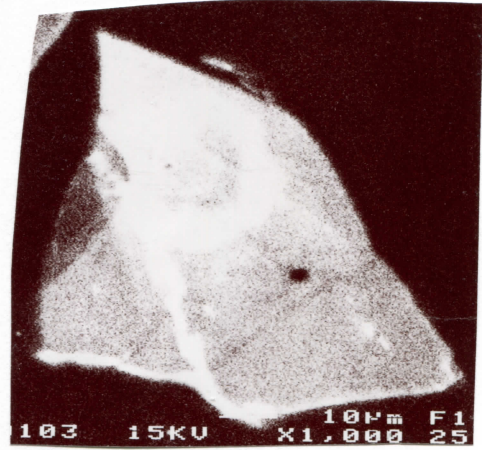
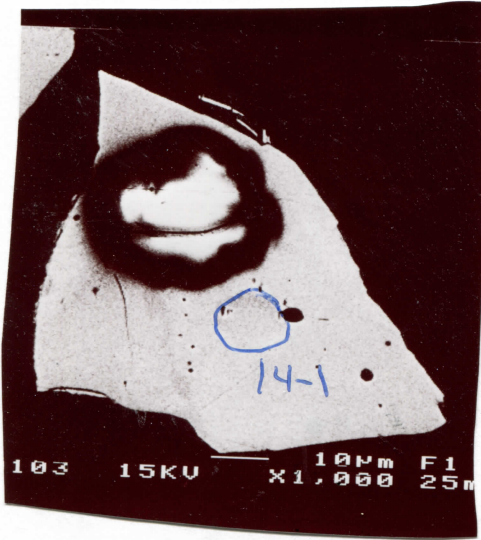


95-30, Gp 17, Grain 13, BSE 39mm

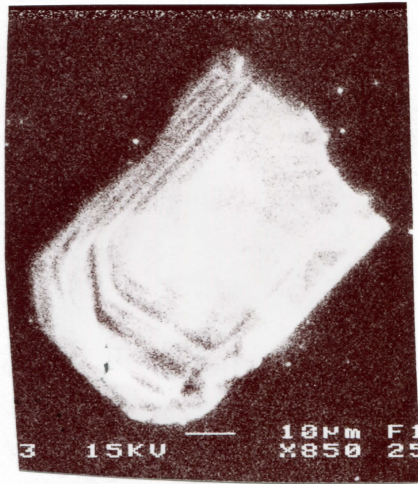
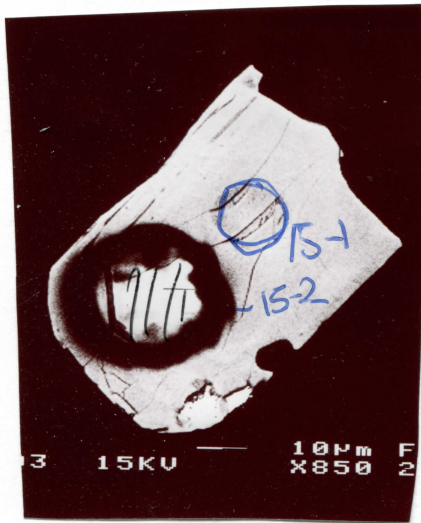


180µm

Note old age and well rounded!



Grain #14.

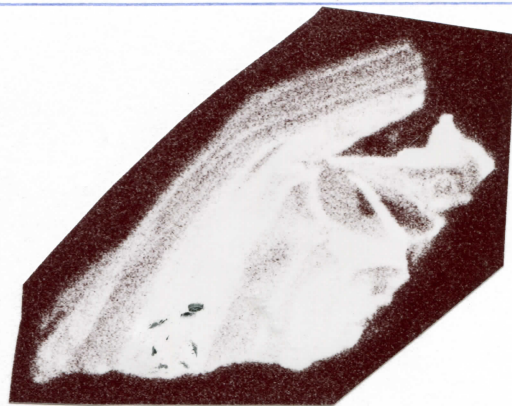
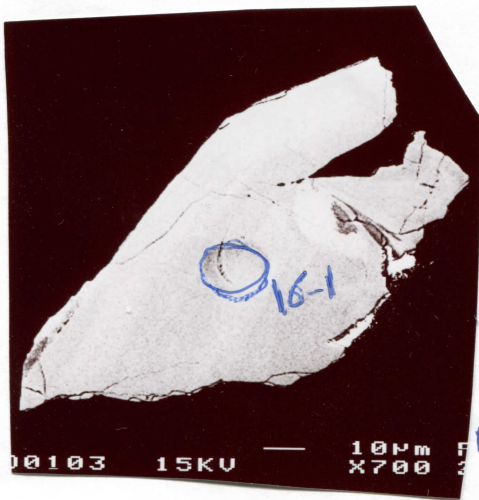


BSE

Grain #15

cc

15-2 abundant T.Pb.

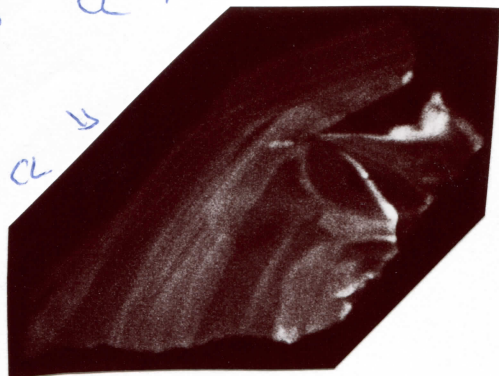


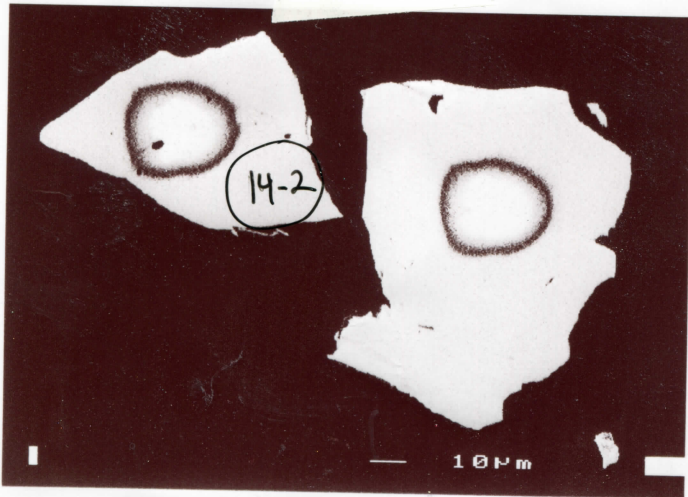
Grain #16-1

BSE

α →

α ↓

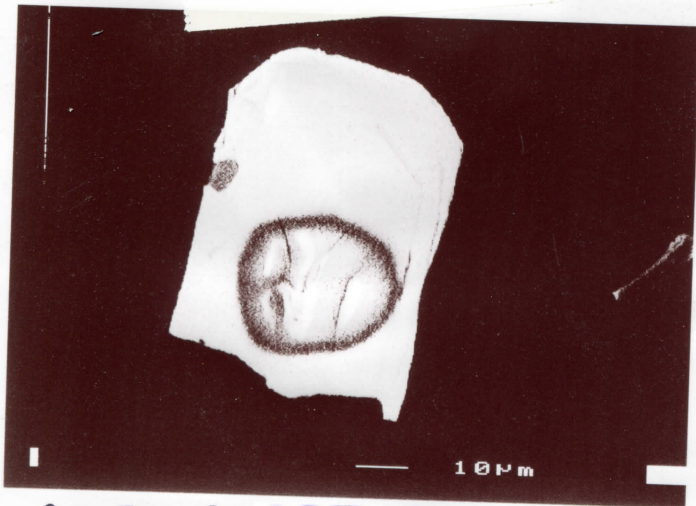




2662

90µm

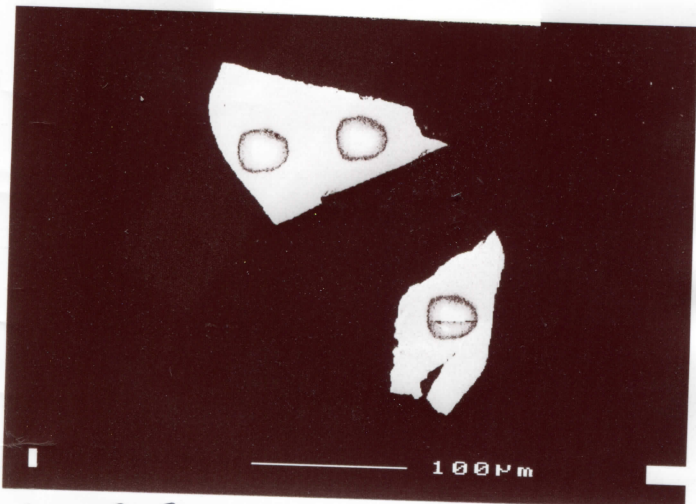
95-30, Grain #14, GP 26 BSE, 39µm



2580 → note
 fractures, may
 went to through out,
 redo near top!

75µm

95-30, Grain #15, GP 24, BSE, 39µm



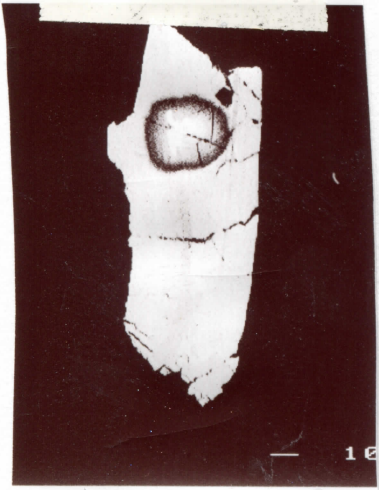
150µm



16-1

2767

95-30, Grain 3.16. GP 24 BSE 39µm



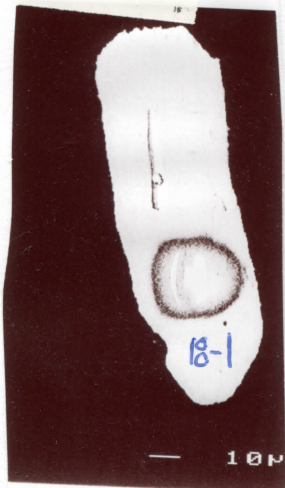
30, Gp 28, Grain 1



Grain 17
Abandoned T Pb

← Day 2, BSA Photo

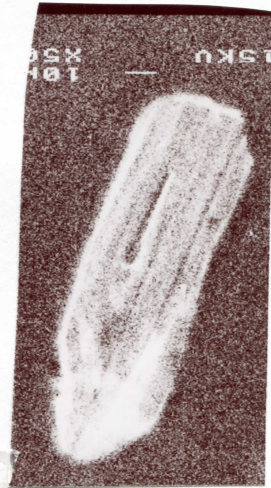
110µm



18-1 Gp 33

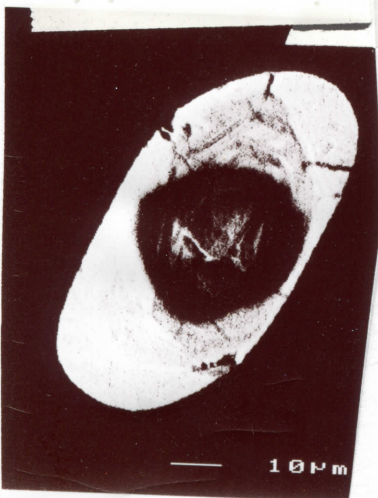


18-2

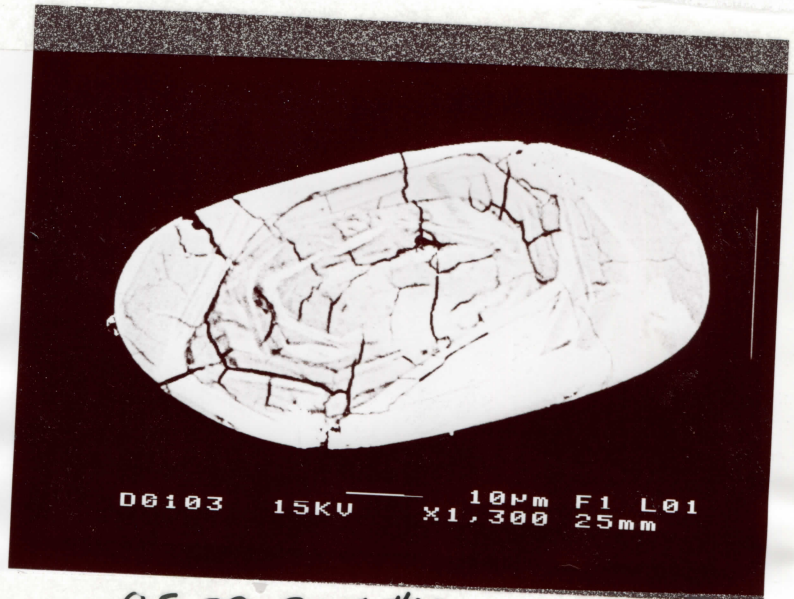


CL

50µm



Grain #19, Gp 35



95-30, BSE #19

867

72µm

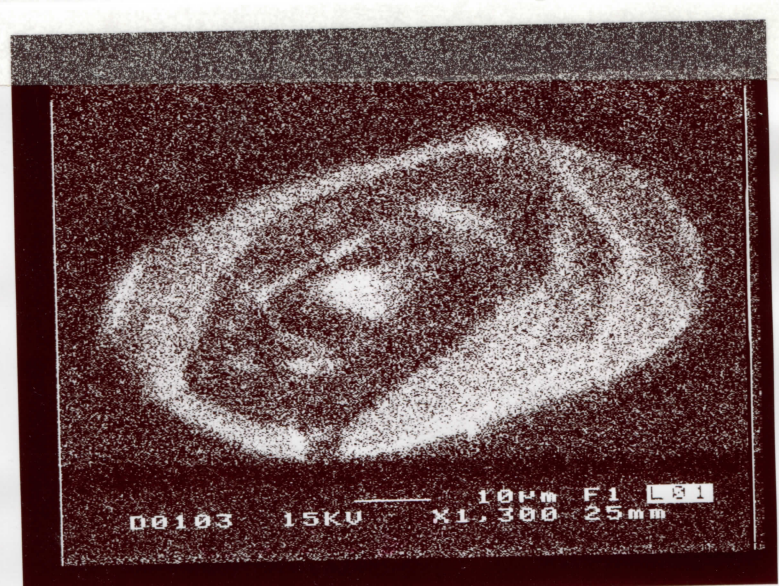
Abandoned T Pb

Hand

Hand

Hand

Hand



00103 15KV 10µm F1 L31
X1,300 25mm

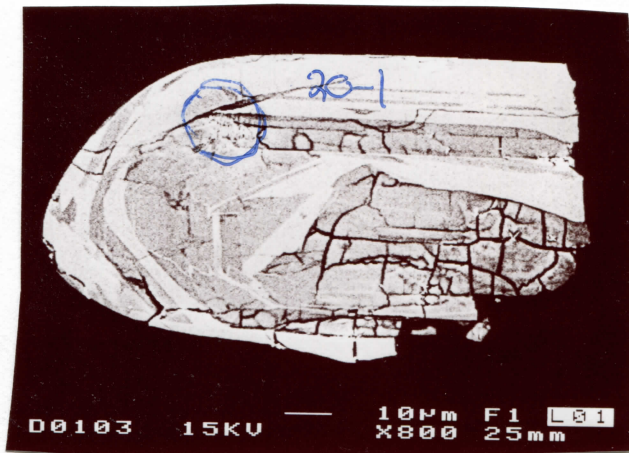
95-30, CL 419

Hand

Hand



30, Gp ~~40~~ Grain # 20, 40



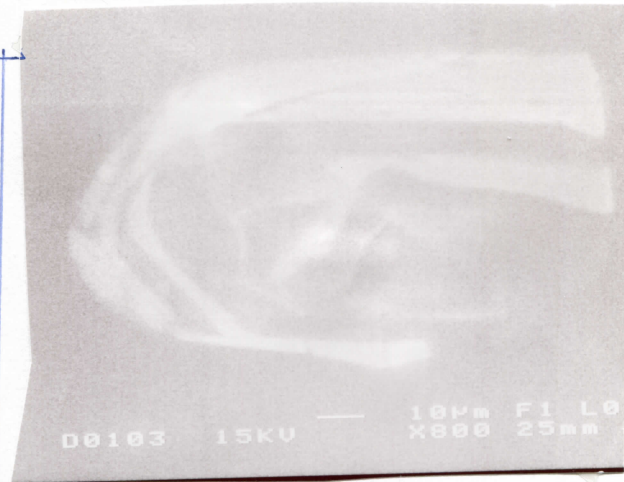
Grain #20, BSE

90µm



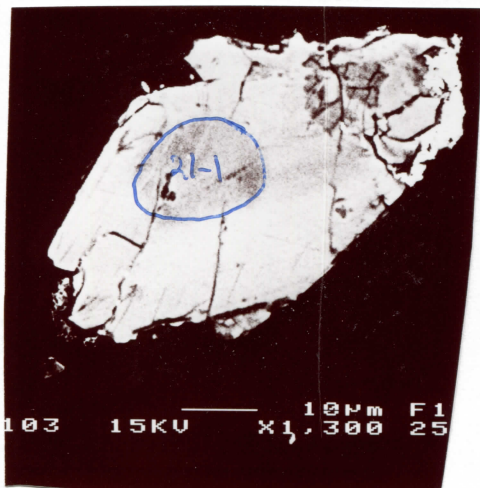
15-30, Gp ~~39~~ Grain

50µm

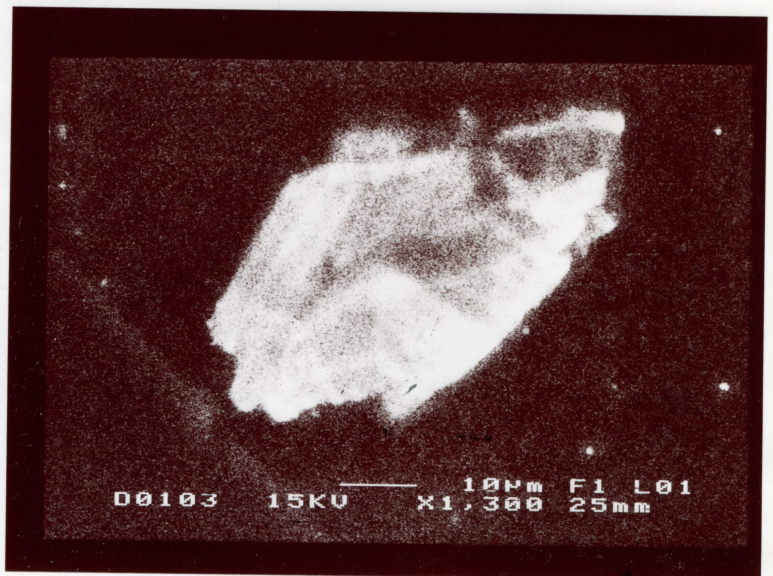


Grain #20, CL

Grain #21



BSE, Grain #21



35-30, Grain #21, CL

871

#21

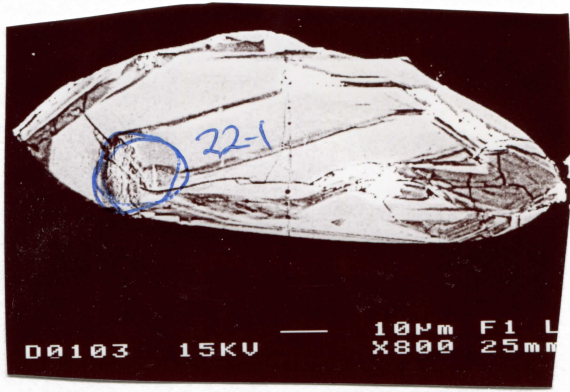
95-30

4291212



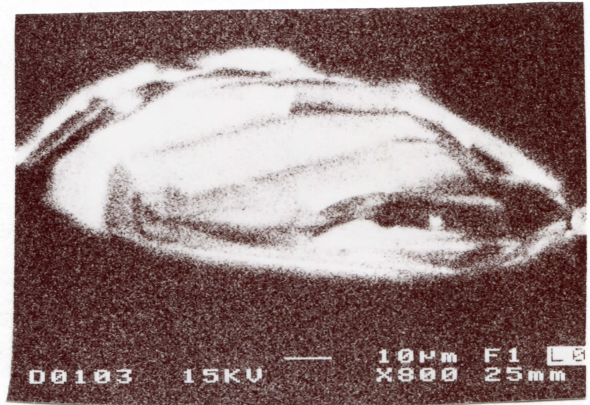
0, Gp 31, Grain #22

110um



BSE

Grain #22



BSE

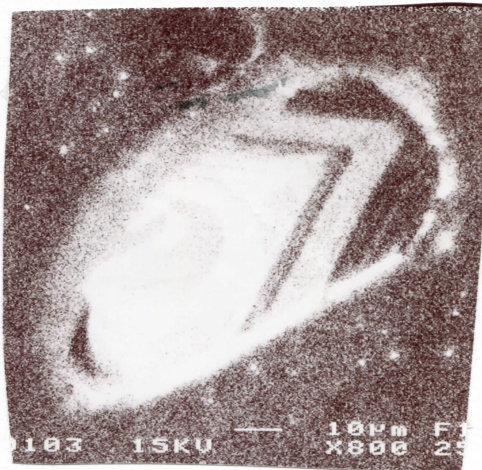
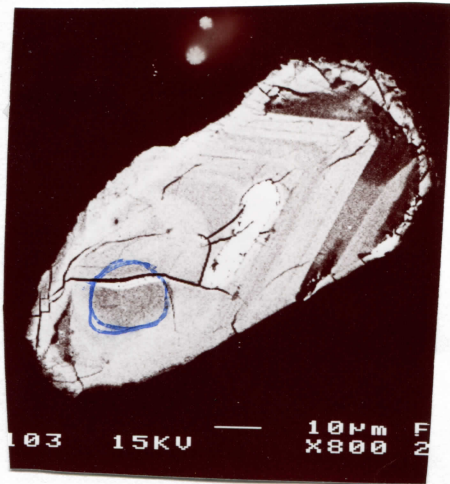
Grain #22

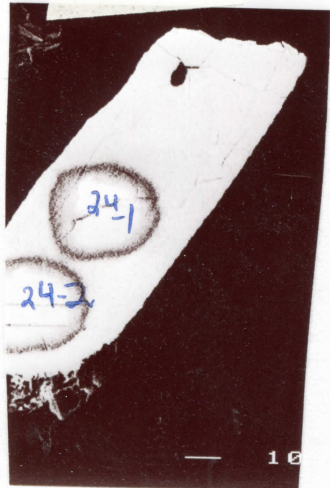


-30, Gp 29, Gr

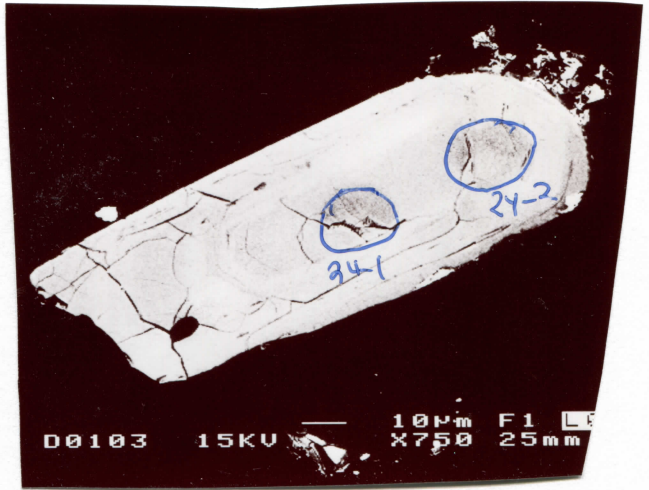
Grain #23

100um



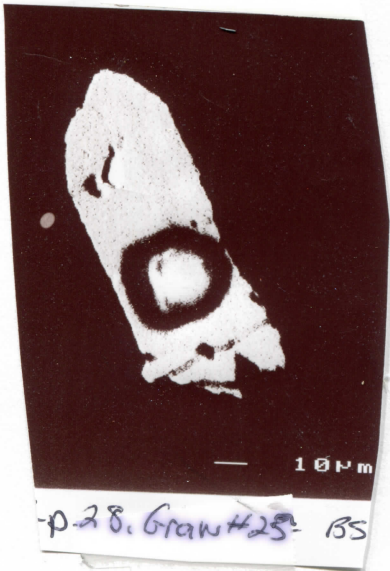


O, Ap 29, Gro



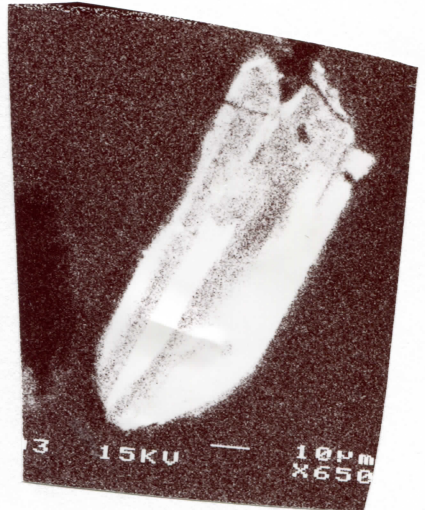
110µm

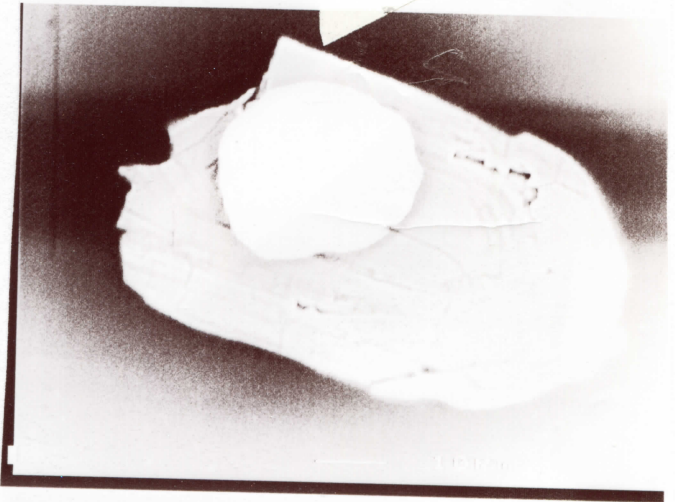
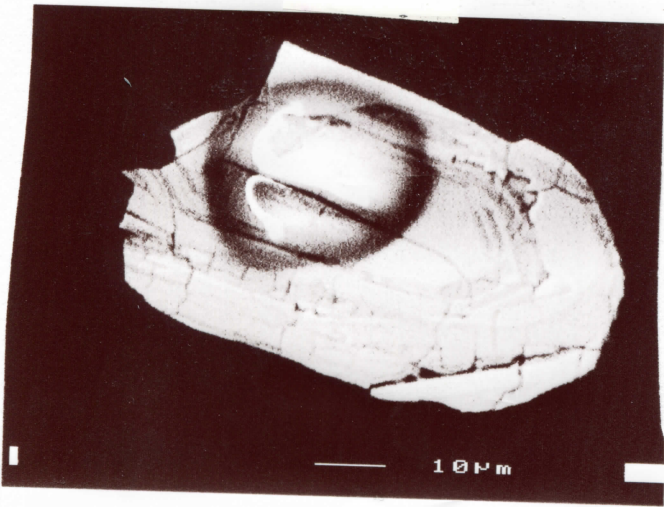
Grain #24



p. 28. Grain #25 BS

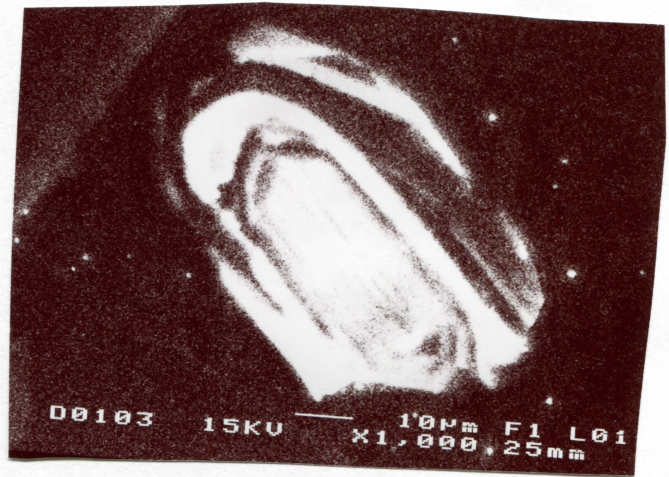
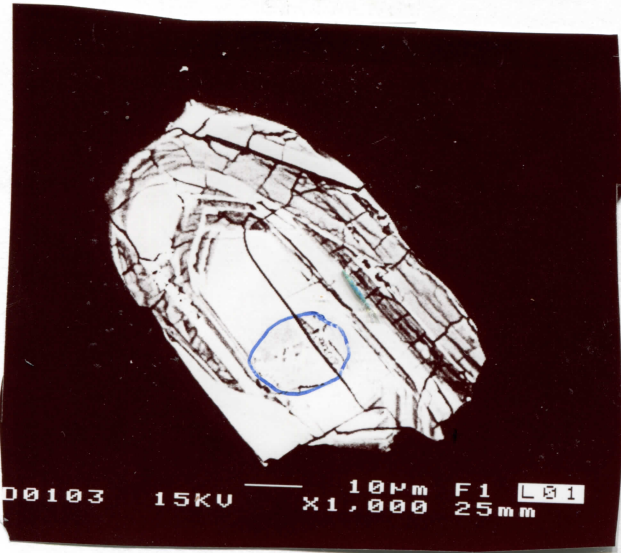
100µm





95-30, Gp30, Grain 20, BSE 39mm

95-30, Gp30, Grain 20 - SE 39mm

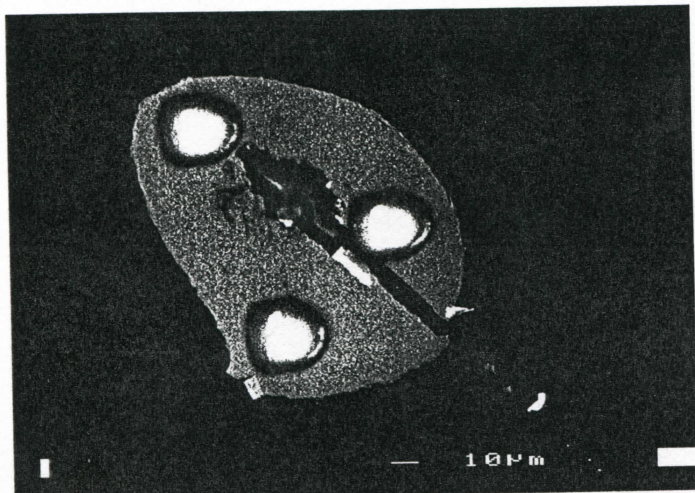
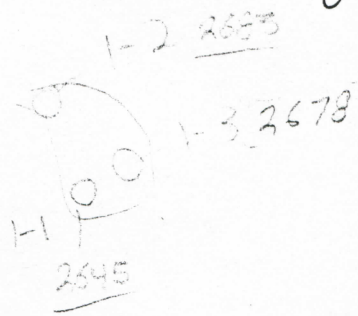


Grain #20

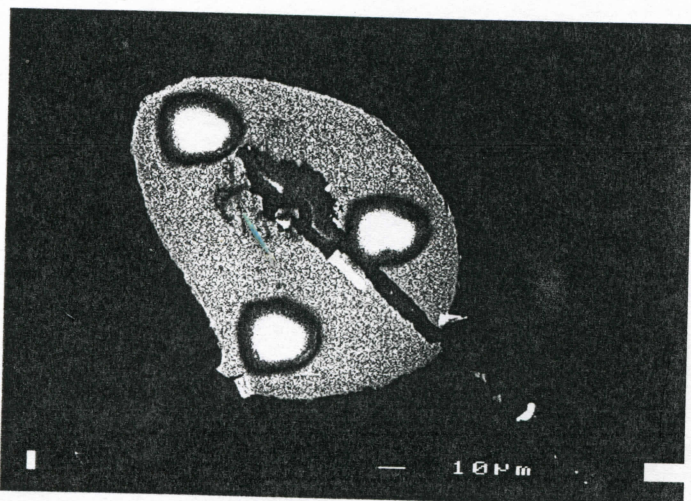
CL

65µm

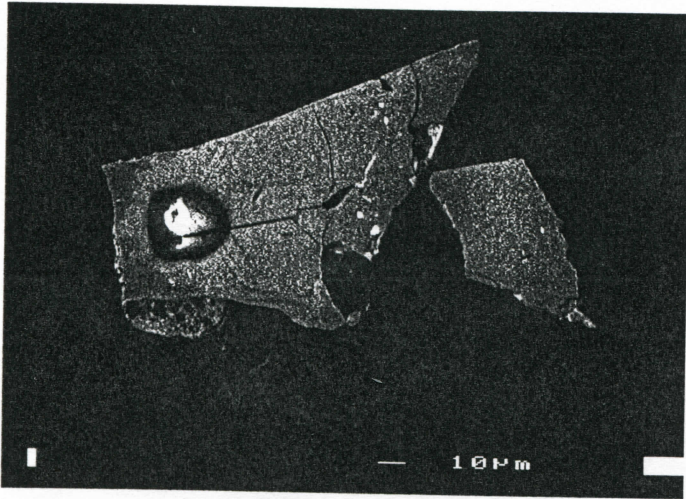
95-30: 429121z "Aphyric Porphyry"



95-30, Grain #1, Gp 23. → BSE
 Hard to see on SE. Bad Au coat?
 39mm

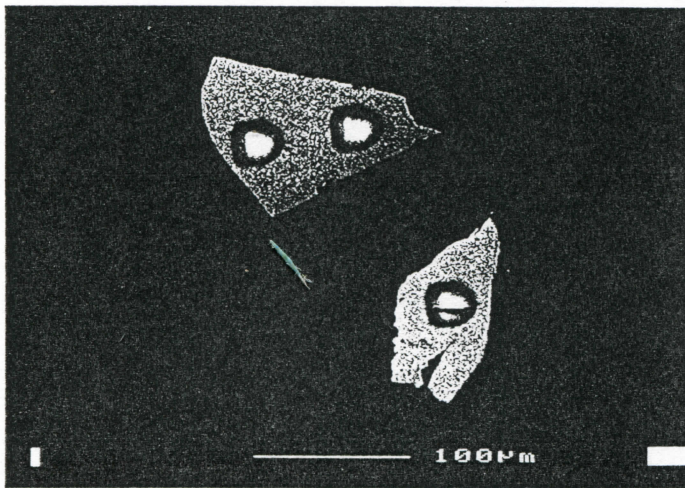


95-30, Grain #1, Gp 23, BSE
 See note on other photo
 39mm



95-30, GP 23, Grain #2 BSE

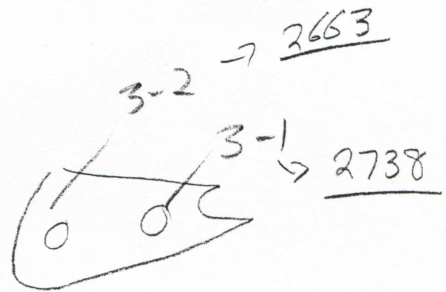
39mm

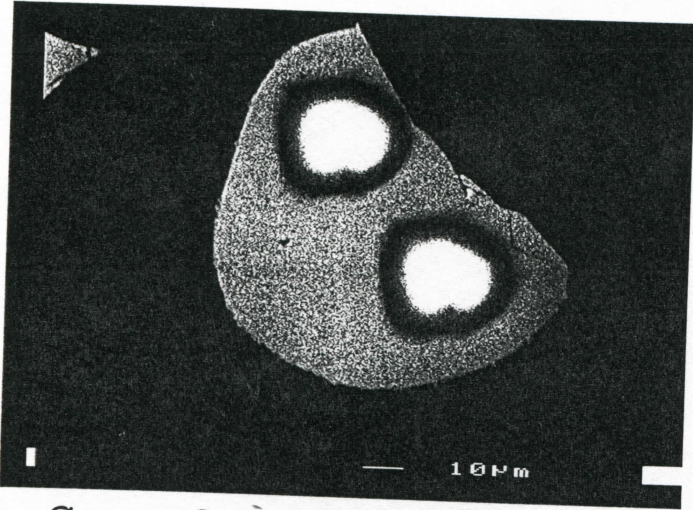


95-30, Grain 3.16. GP 24 BSE

- a bonded ↑ common Pb

↳ Con mode!



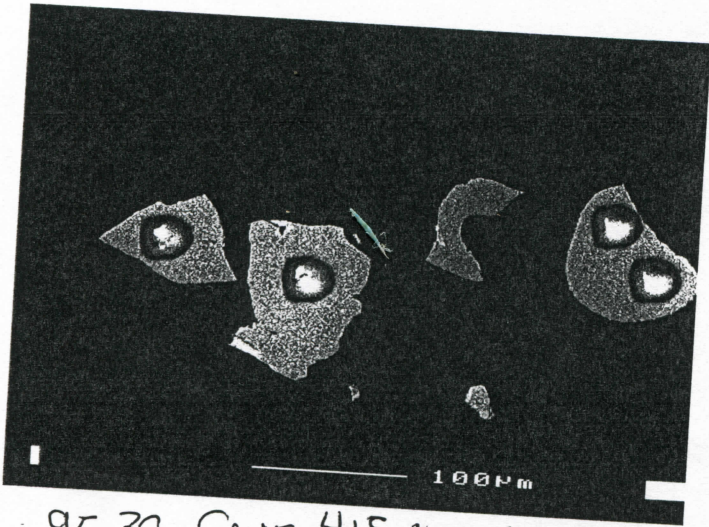


95-30, Grain 4, GP 20, BSE

39mm

Grain 4:

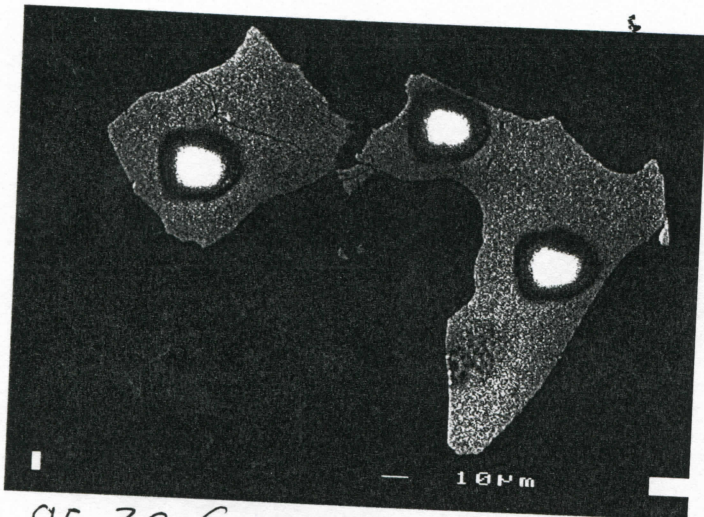
O-4-2 2653
 O-4-1 2654



95-30, Grains 4, 5, 14, GP 30
BSE

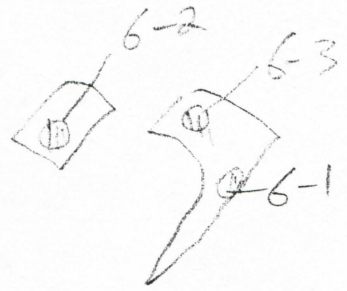
39mm

14-5 2673

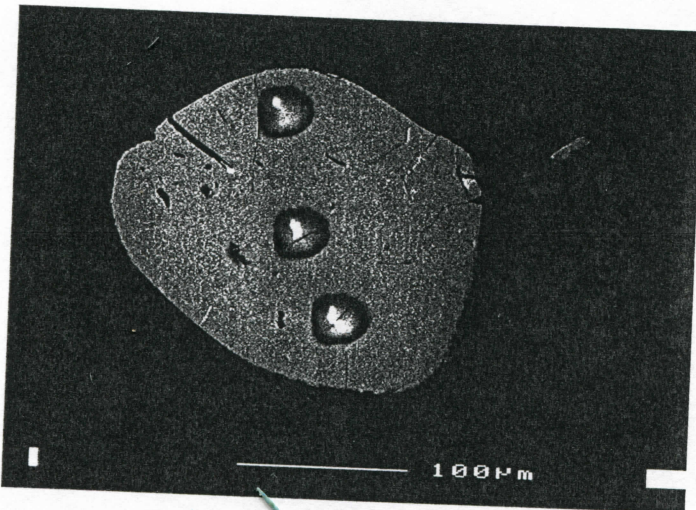


95-30, Grain 6, Gp 28 BSE 39mm

39mm

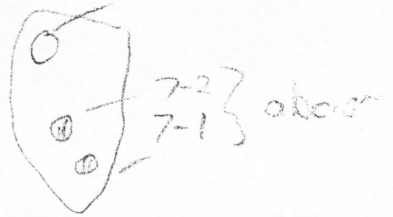


All abandoned
DUE to P common
PB! Can't see
reason for this!

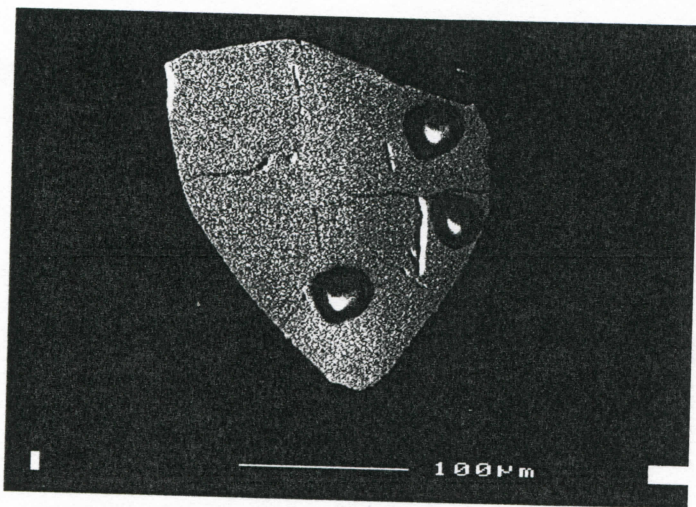


39mm 95-30, Gp 21, Grain 7, BSE

7-3: 2668

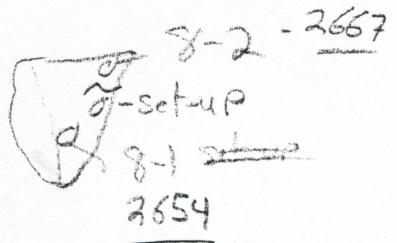


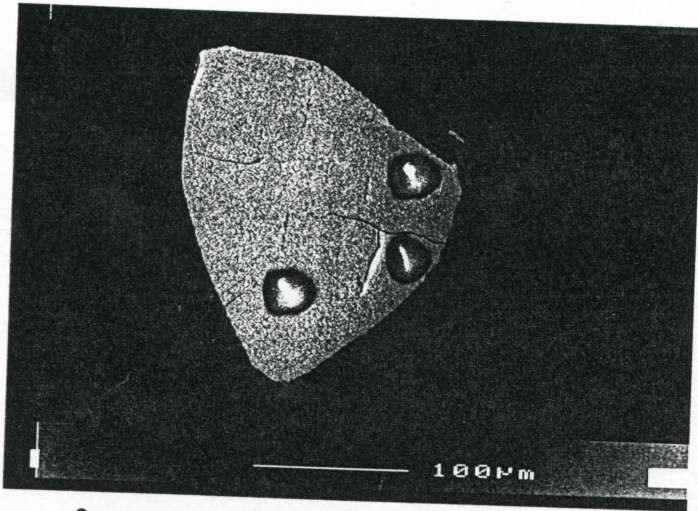
Can get new spots
on here.



95-30, Gp 19, Grain #8 BSE

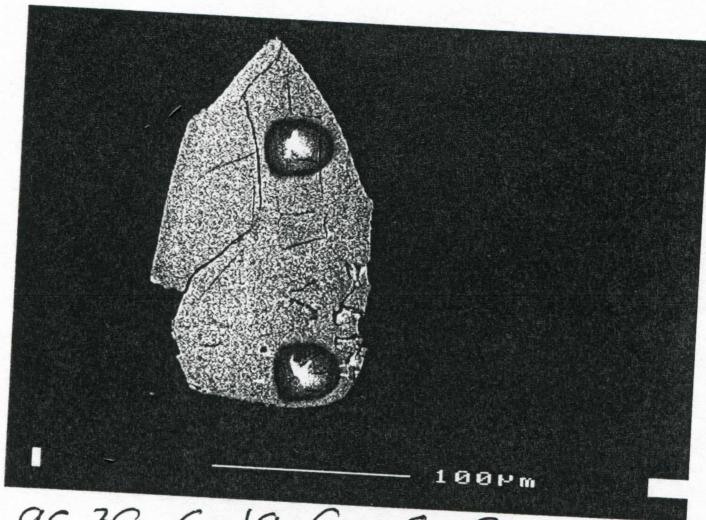
15mm



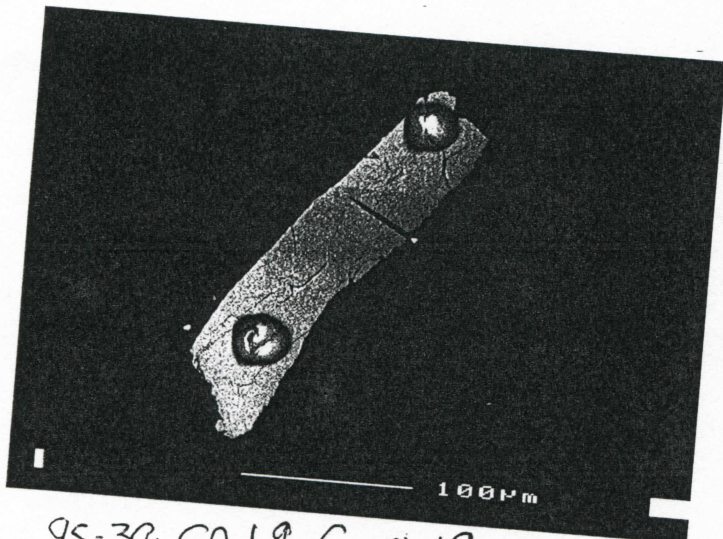
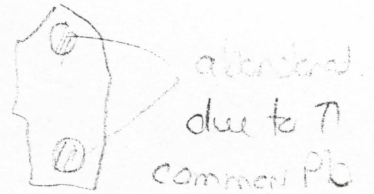


39mm 95-30, Gp 19, grain 8 BSE

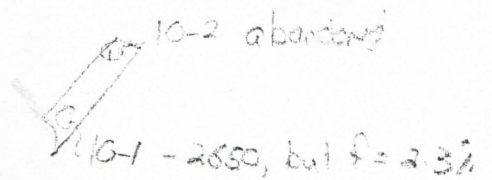
See previous
Page

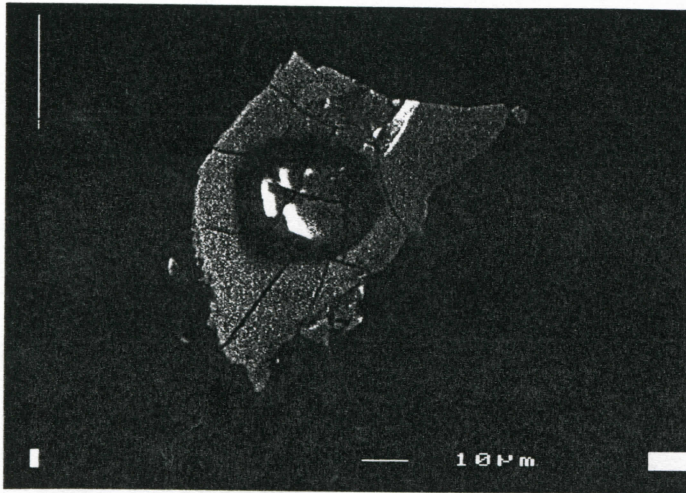


95-30, Gp 19, Grain 9, BSE 39mm



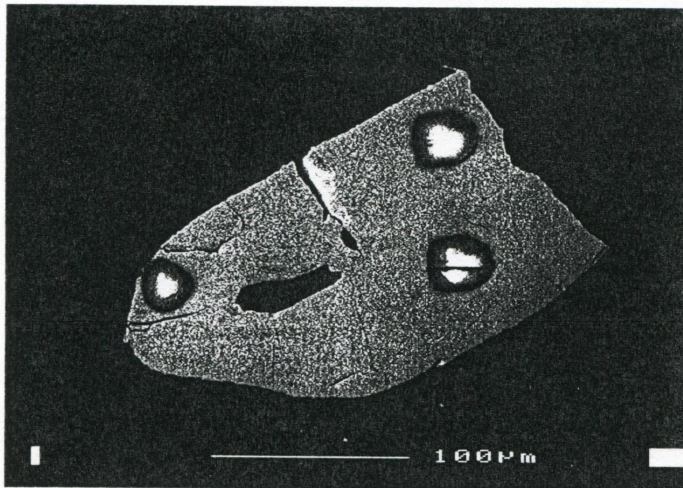
95-30, Gp 19, Grain 10, BSE 39mm





95-30, Grain 11, Gp 18 BSE 39mm

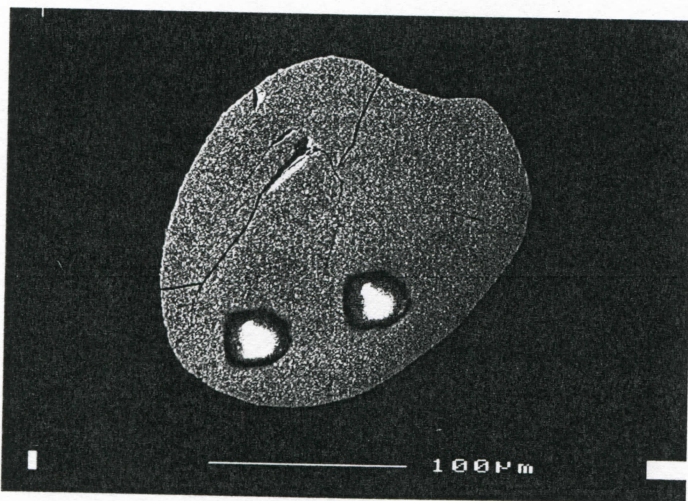
abandoned T 204



95-30, Gp 17, Grain 12, BSE, 39mm

12-1
 12-2
 ↓
 2882, but f = 6.7%
 ? not recorded.

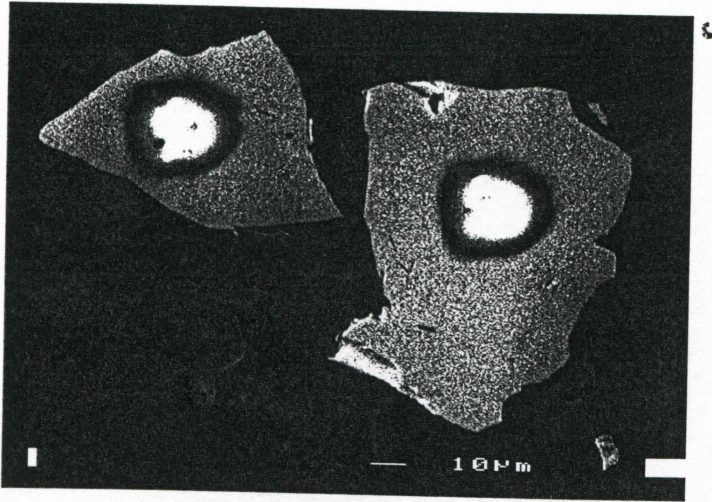
Don't know why bad grain to analyse. Like Grain #6!



95-30, Gp 17, Grain 13, BSE 39mm

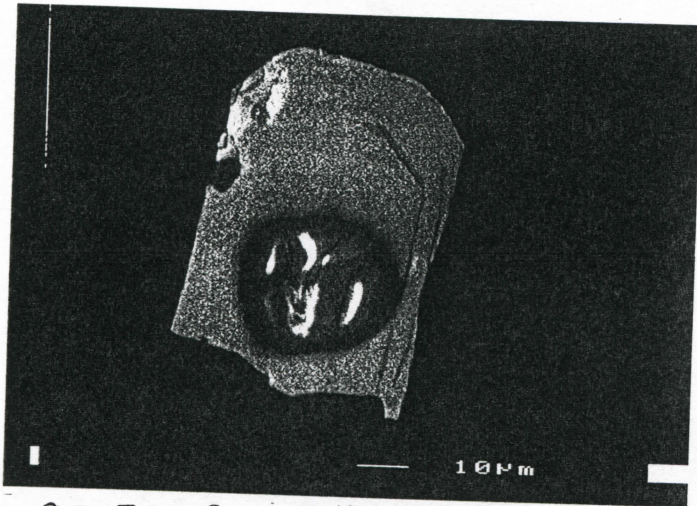
13-1
 13-2 - 2682
 2697.

Note old age and well rounded!



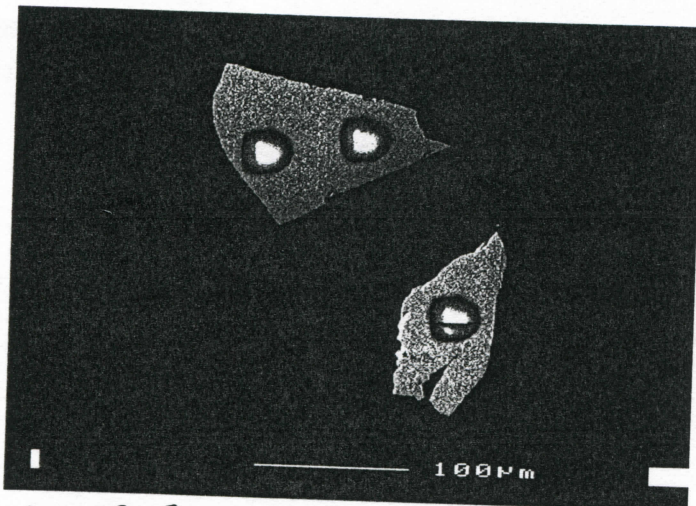
2662

95-30, Grain #14, GP 26 BSE, 39nm



2580 → note
 fractures, may
 want to through out,
 redo near top!

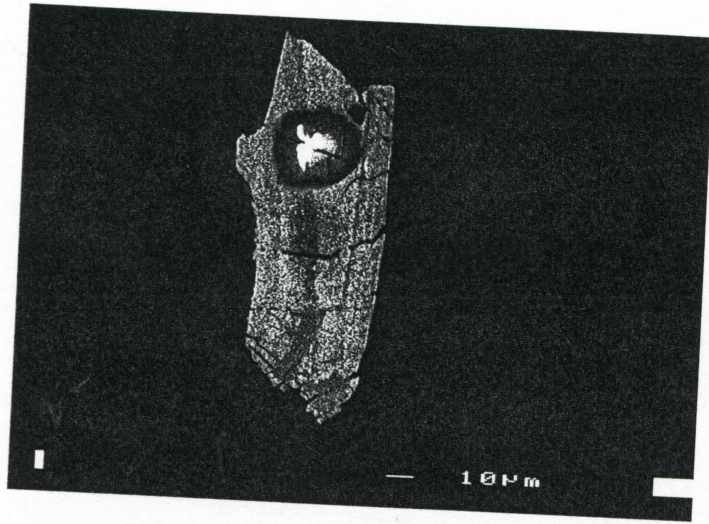
95-30, Grain #15, GP 24, BSE, 39nm



16-1

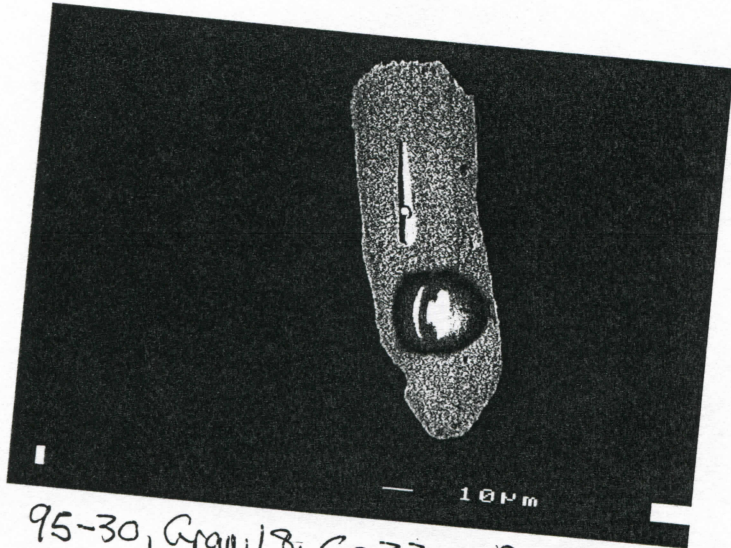
2767

95-30, Grain 3, 16. GP 24 BSE 39nm



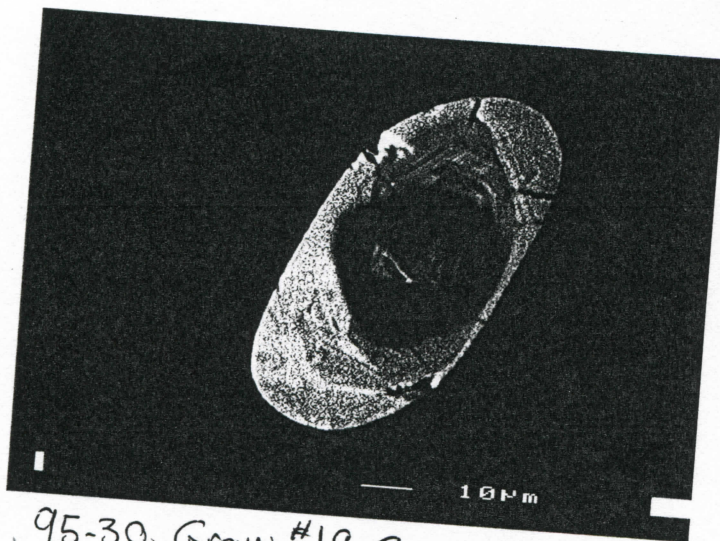
95-30, Gp 22, Grain 17 BSE 39mm

- abundant Ti
 common Pb
NB can
 re-do!



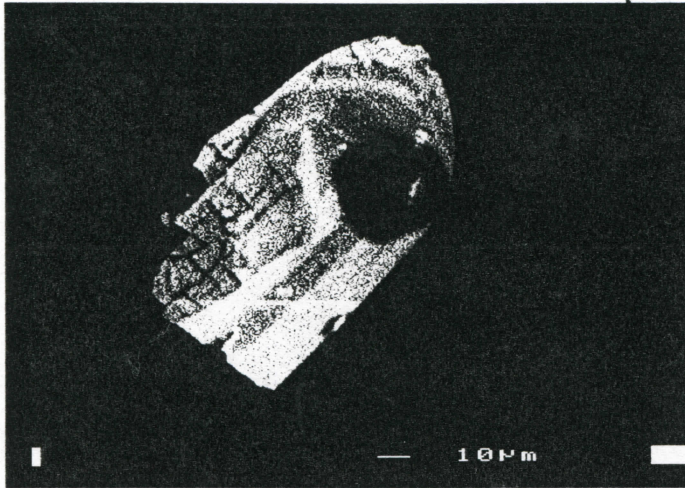
95-30, Grain 18, Gp 33 BSE 39mm

18-1
 2661,
 Can do spot
 on other end.



95-30, Grain #19, Gp 35 BSE, 15mm

→ abundant Ti
 common, Pb
 Can try spot on
 end of grain

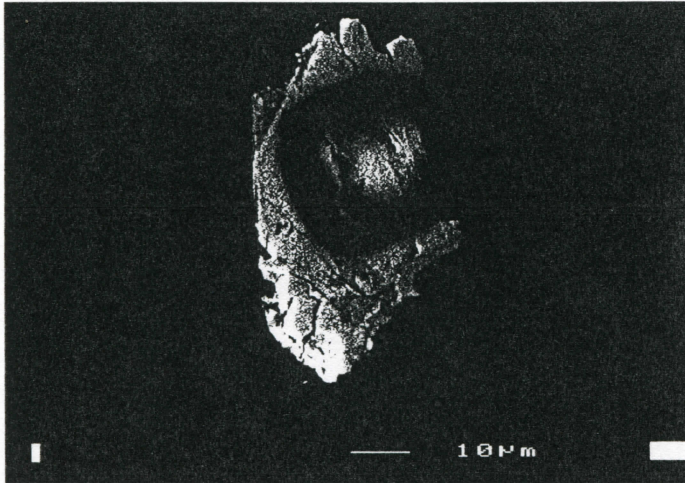


95-30, Gp ~~40~~ 40 Grain # 20, BSE 15mm

8G1:

2790, but $f_{\text{Fe}} = 9.2\%$

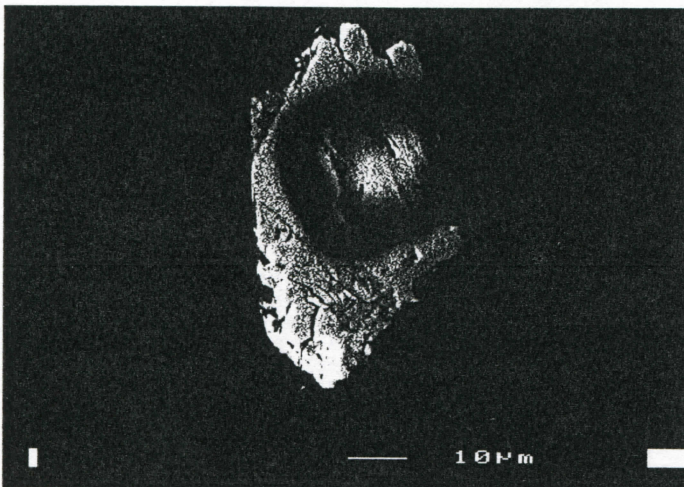
Redd!



15mm ~~95~~ 95-30, Gp 39, Grain # 21, BSE

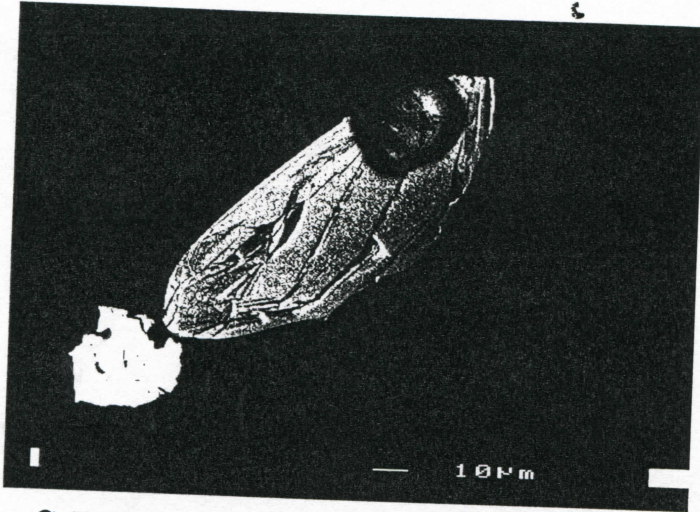
21-1: 2419mg

→ disordered because of fractures + cracks?



95-30, Gp. 39, Grain #21, BSE

15mm

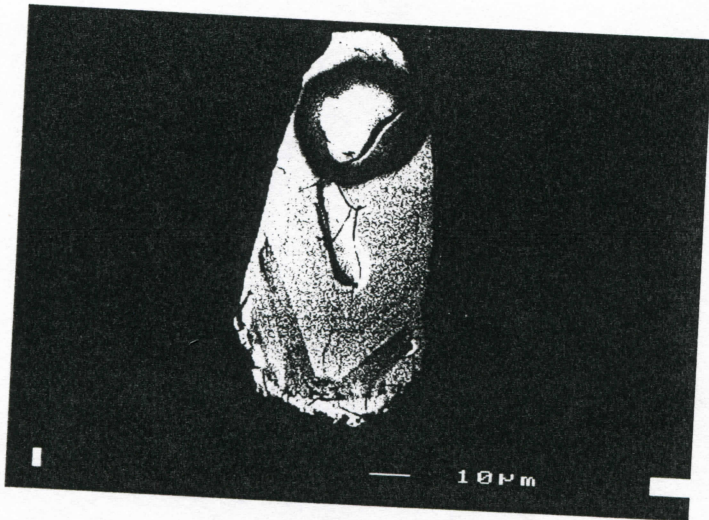


95-30, Cp 31, Grain #22, BSE, 15mm

22-1:

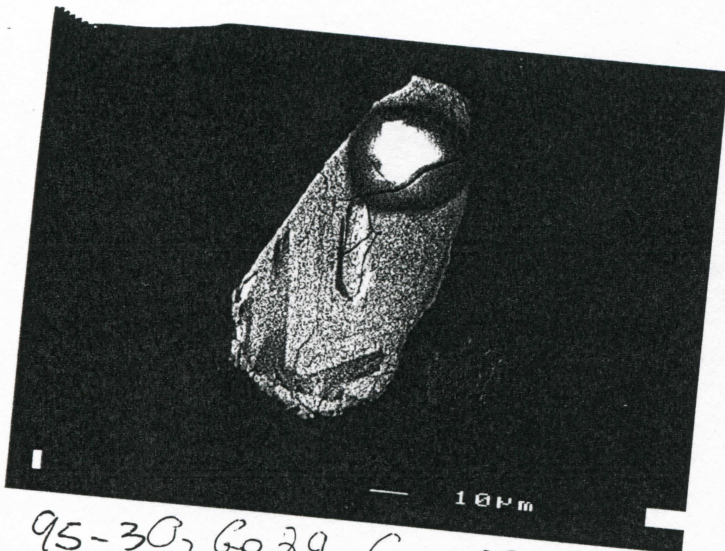
2584ma

→disregard
F208 = 5.27 +
fractures

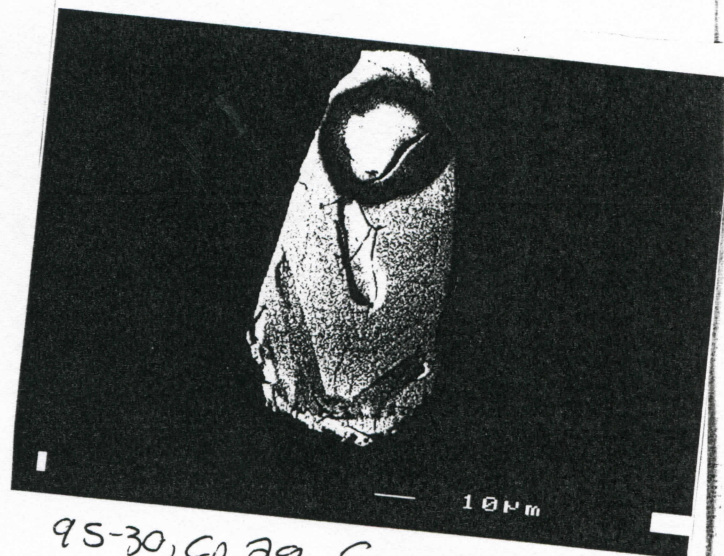


15mm, 95-30, Cp 29, Grain 23, BSE

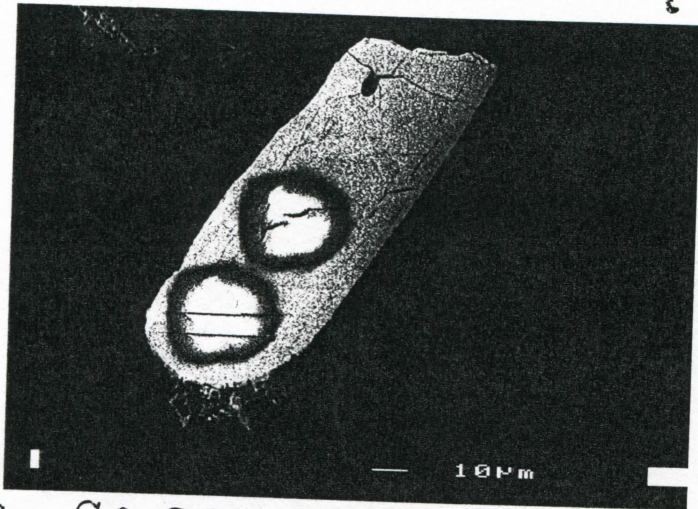
23-1: 2684



95-30, Cp 29, Grain 23 BSE, 15mm



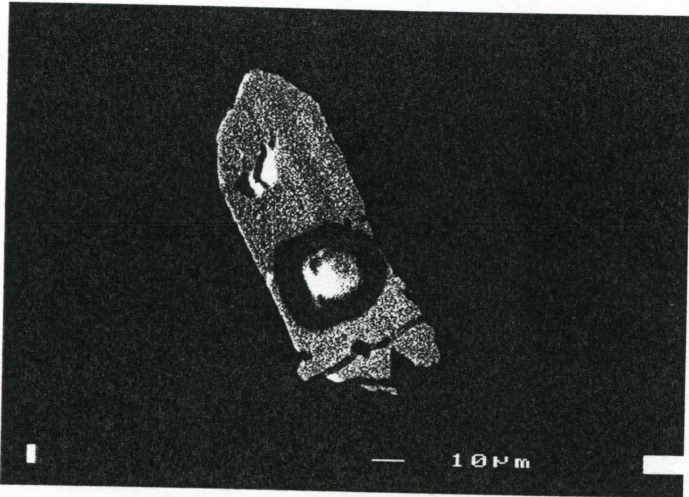
95-30, Cp 29, Grain 23, BSE, 15mm



24-1: ²⁶⁴²
 of 24-1
 24-2
3692

Disregard 24-1 because
 of fracture crack.

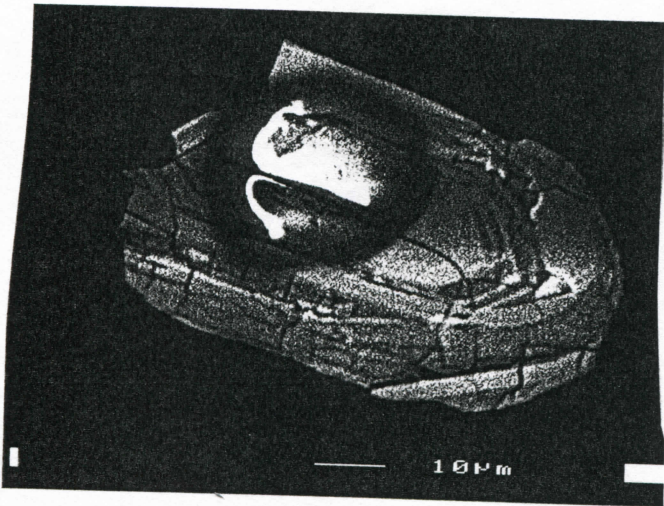
39mm 95-30, Gp 29, Grain #24 BSE



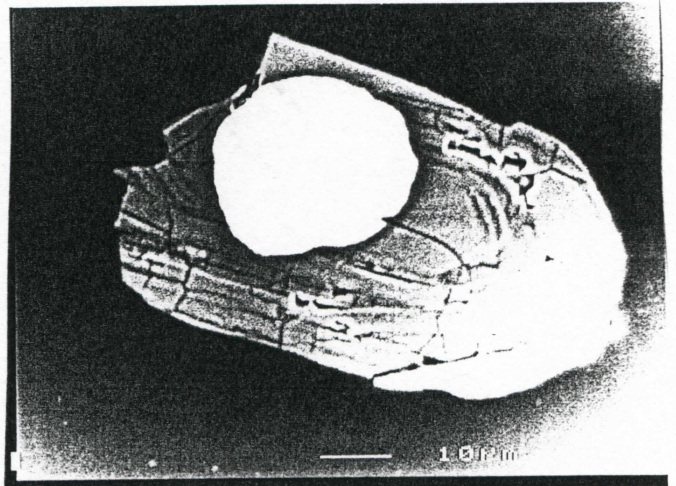
25-1: 2652 ma.

95-30, Gp 28, Grain #25- BSE, 15mm

26-1: 2746 core?



95-30, Gp 30, Grain 27, BSE 39mm



95-30, Gp 30, Grain 28- SE 39mm