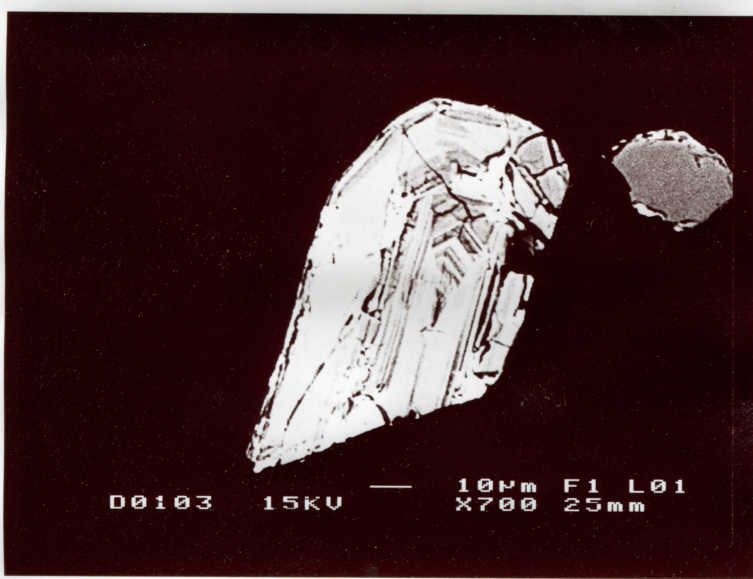


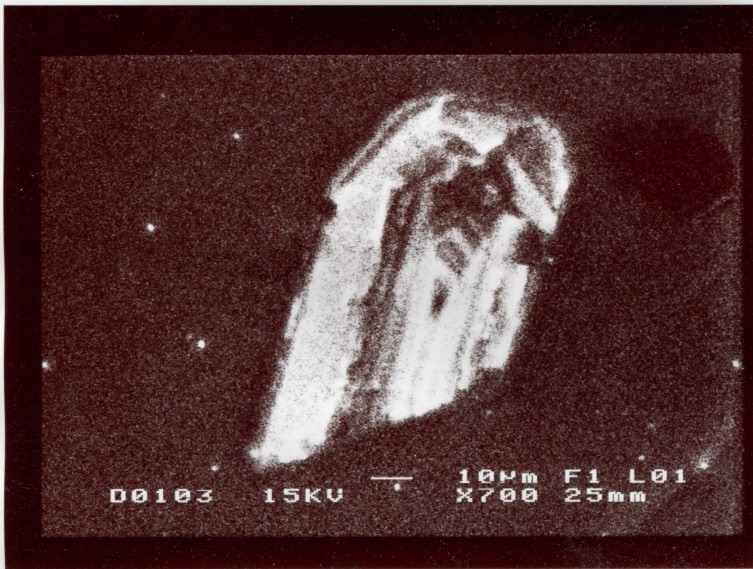
95-30 A, Grain #1, TRA - 878
1385



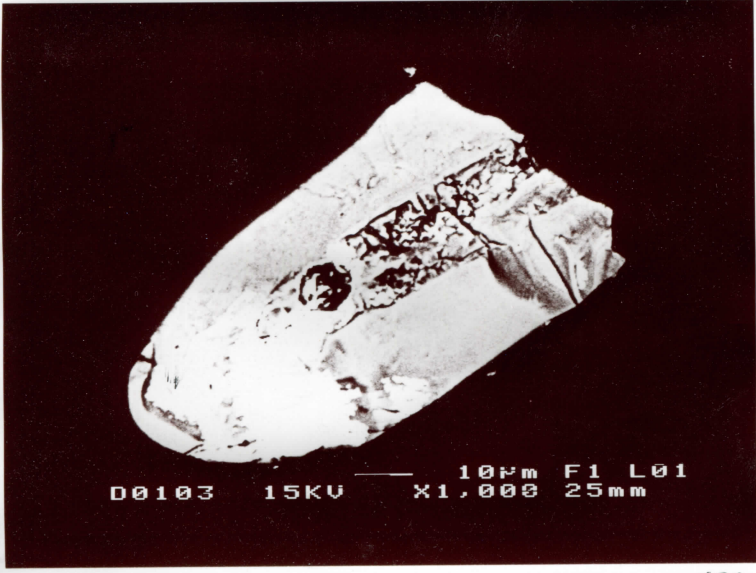
95-30, Chy Grain #1, TRA 879



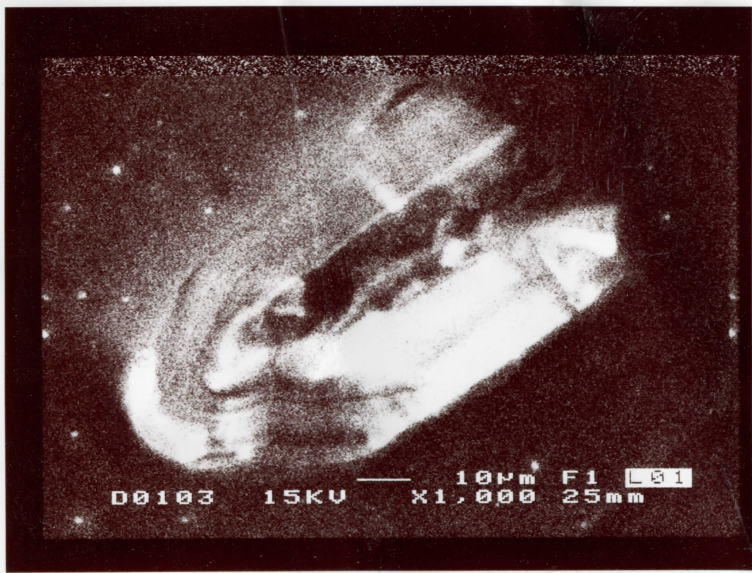
95-30^A, BSE, Grain #2 881
ITR



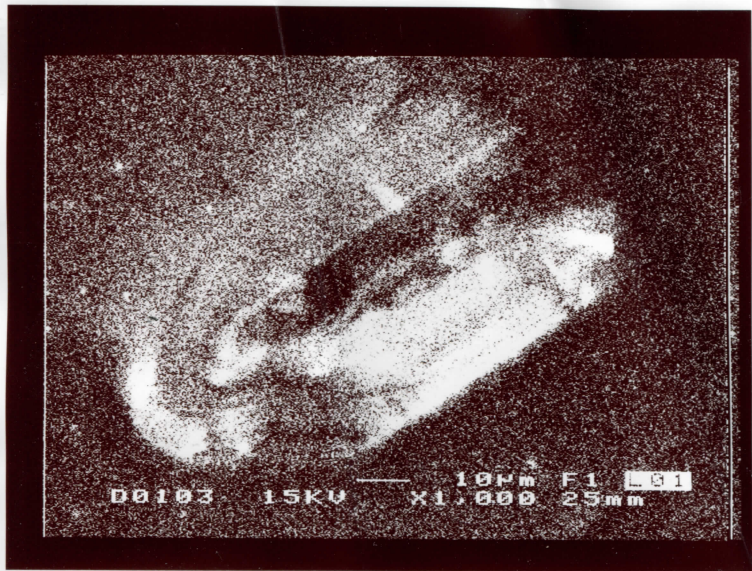
95-30A, ch Grain #2 ITR 880



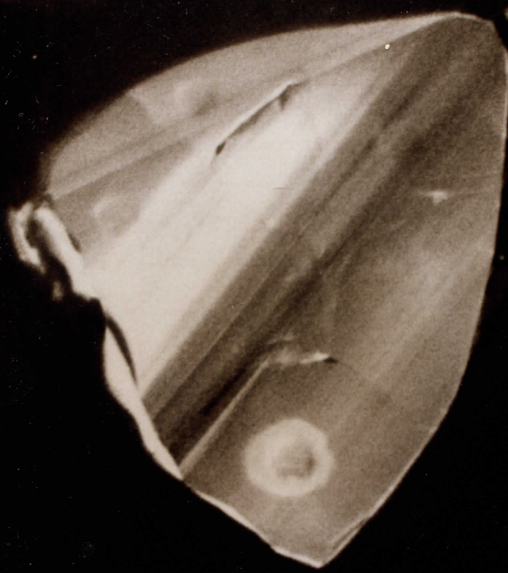
95-30A, BSE, Gratu 3 TRA 802



95-30A, BSE, Grain 3, TRA 883

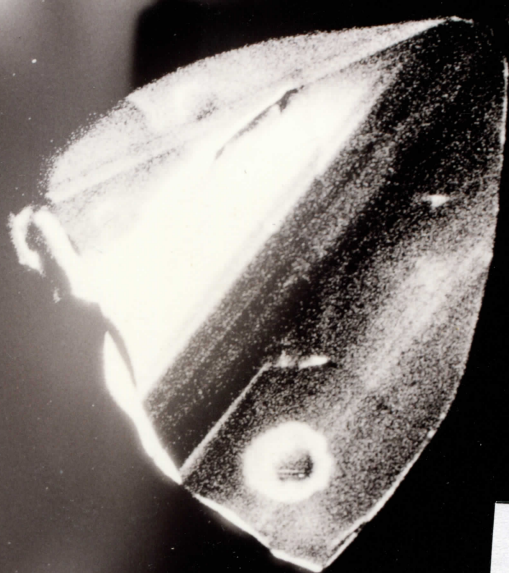


95-30
Grain #8
CL

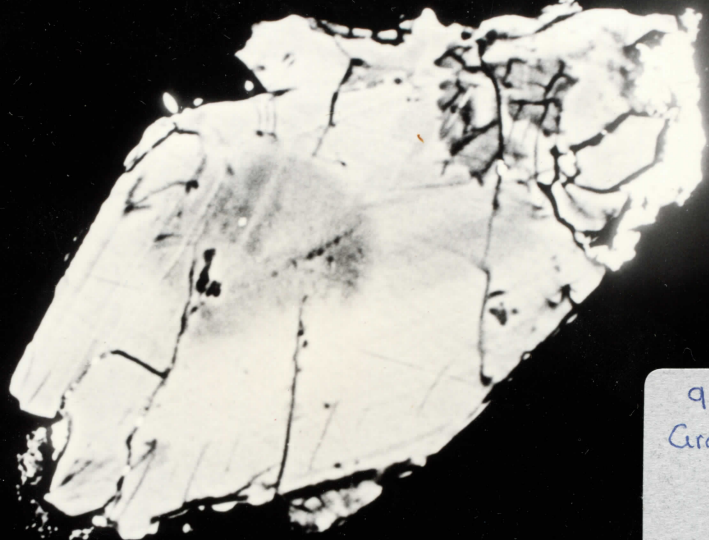


000825 15KV 100µm X270 25mm

95-30
Grain #8
CL



000823 15KV 100µm X270 25mm



95-30
Grain #21
BSE

000870 15KV 10µm
X1,300 25mm



95-30 CL
Grain #21
21-1: 2403±6
f=0.007.
10/7.CENC

000871 15KV 10µm
X1,300 25mm