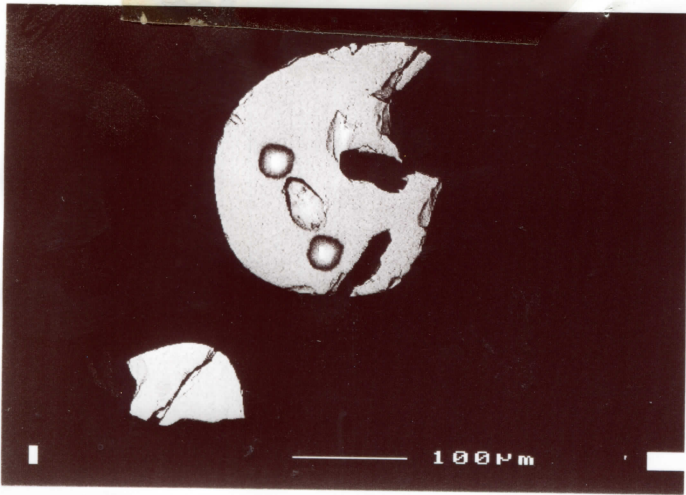


UWA Mount
95-33

Pit 633

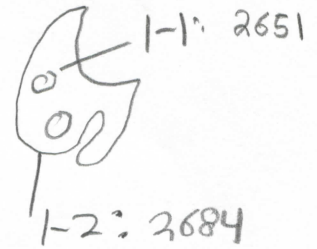
Thermal Photographs
ON

Analysed Grains Day 1.



95-33, Gp 4, Grain #1, BSE, 39mm

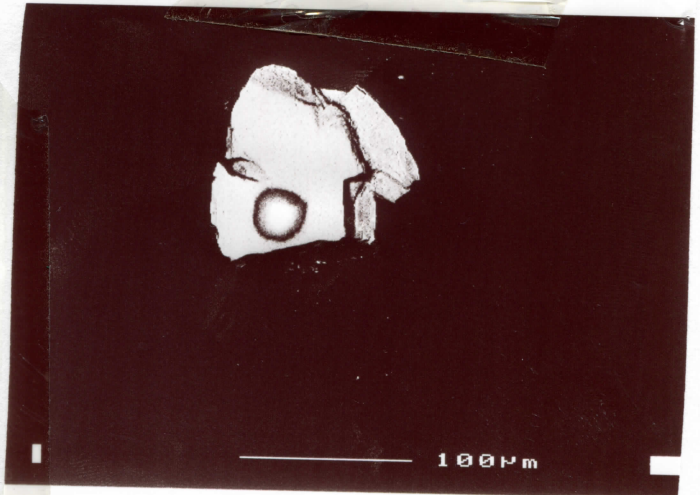
Grain #1



Grain #2
2674

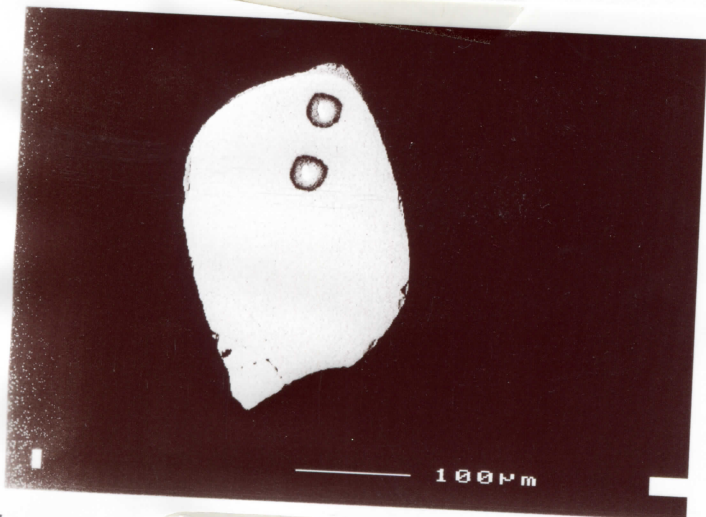
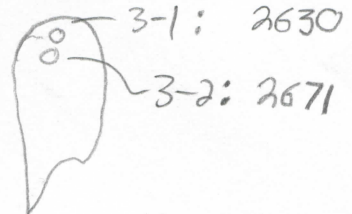


95-33, Gp 5, grain 2, SE, 39mm

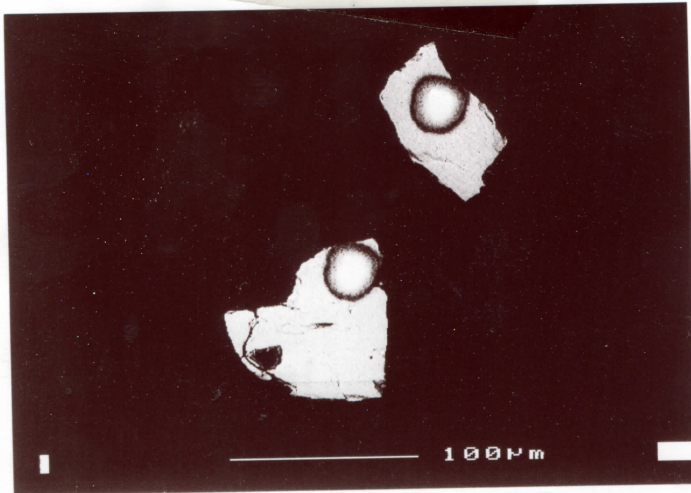


95-33, Gp 5, Grain #2, BSE 39mm


Grain #3




39mm, 95-33, Grain #3, BSE, No Gp



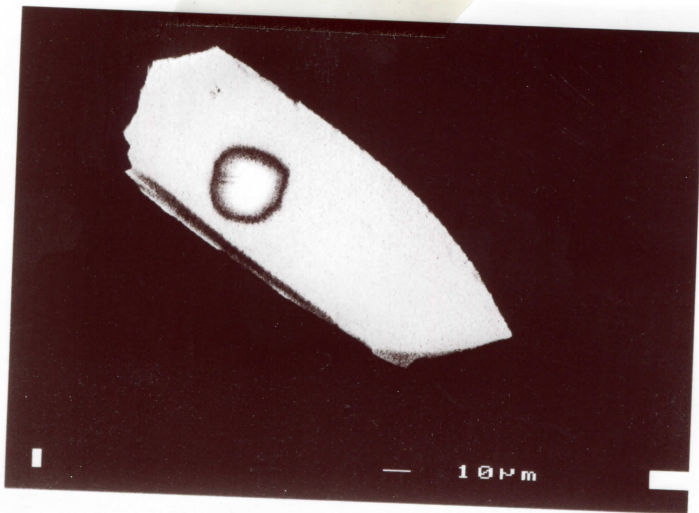
4-1: 2689



5-1: 2593



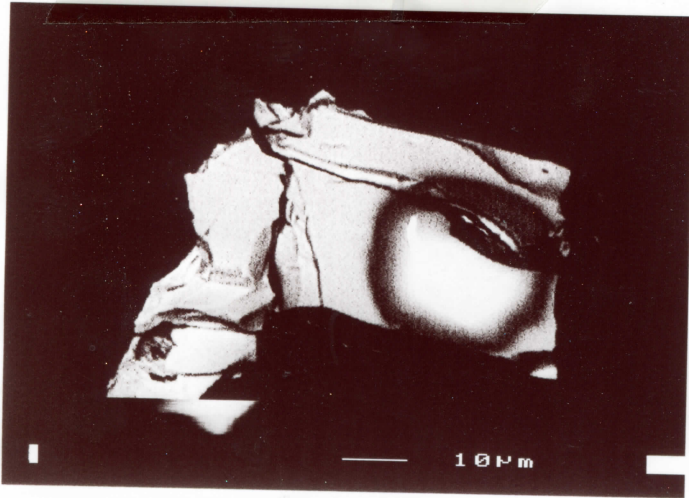
QMA 95-33, GP 18, Grains 4, 5, BSE
 39mm / → third non zircon grain adjacent to
 these, not visible in photograph



Grain #6

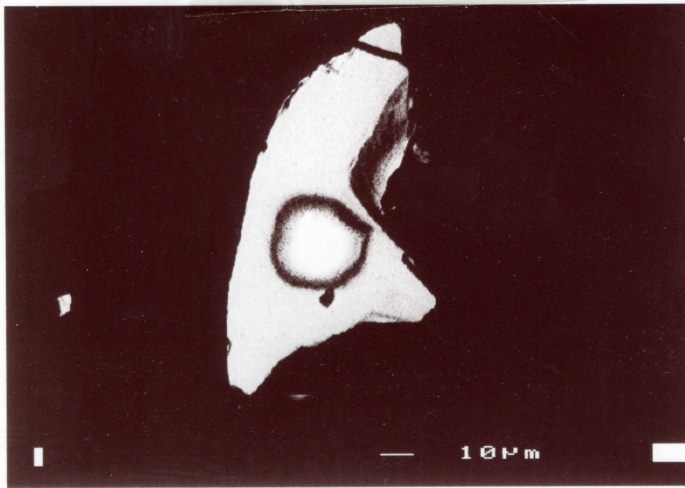
: 2671

39mm, 95-33, GP 12, Grain #6
 BSE!



Grain 7:
2679

95-33, GP 23, Grain #7, BSE
39mm



Grain #8:

2699
↑
mixed age!

95-33, GP 8, Grain #8 BSE
39mm

Grain #9 → no photo

Grain #9.
2687.