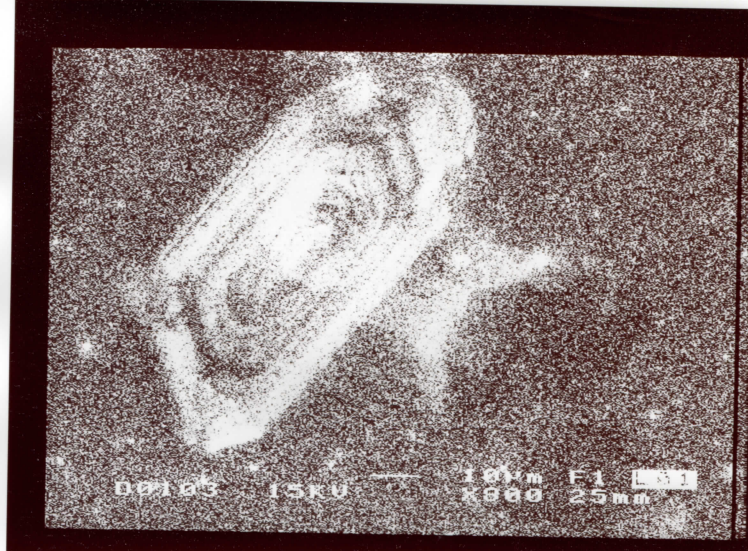
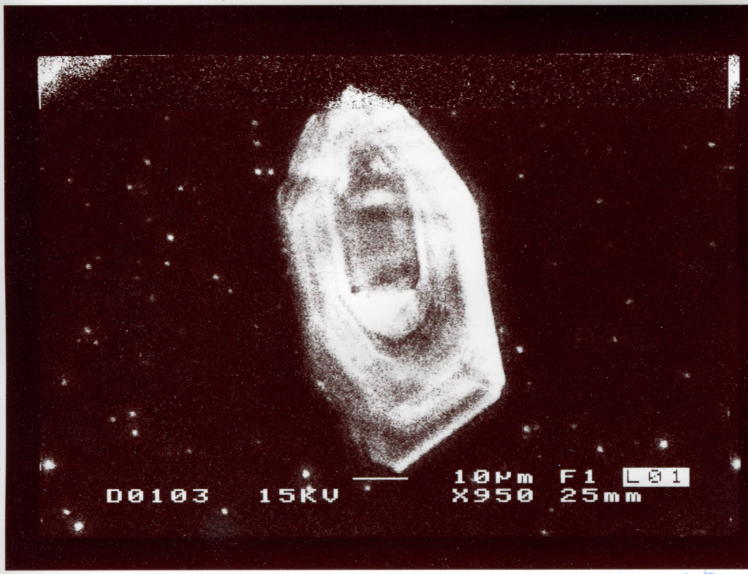


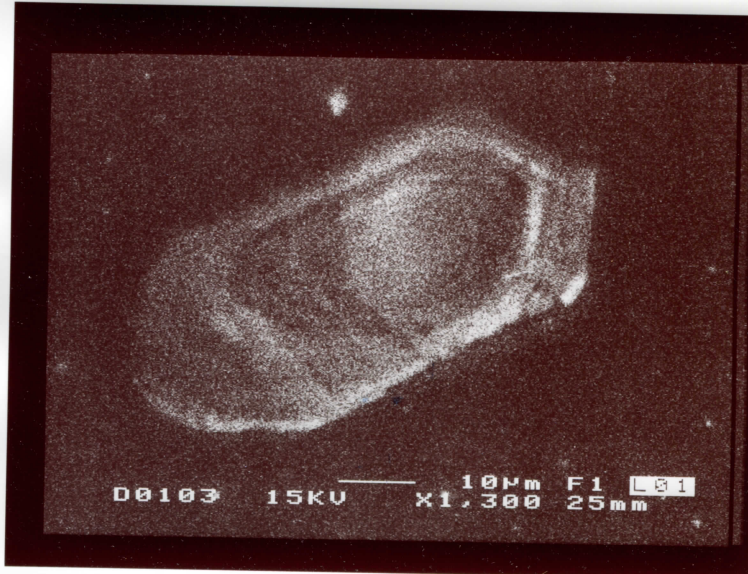
95-34, Grain #1, CL 818



95-34, CL Grain #4 No photo



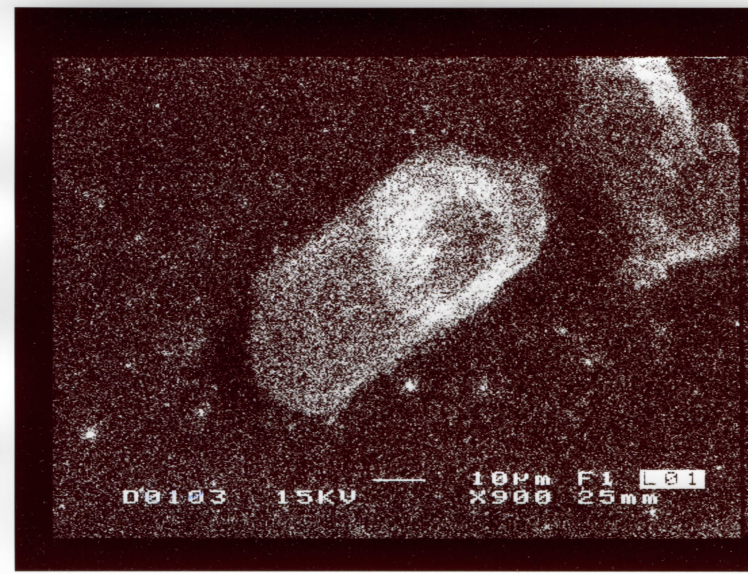
95-34, Grain #2 CL GALT 818



95-34, CL #5 782

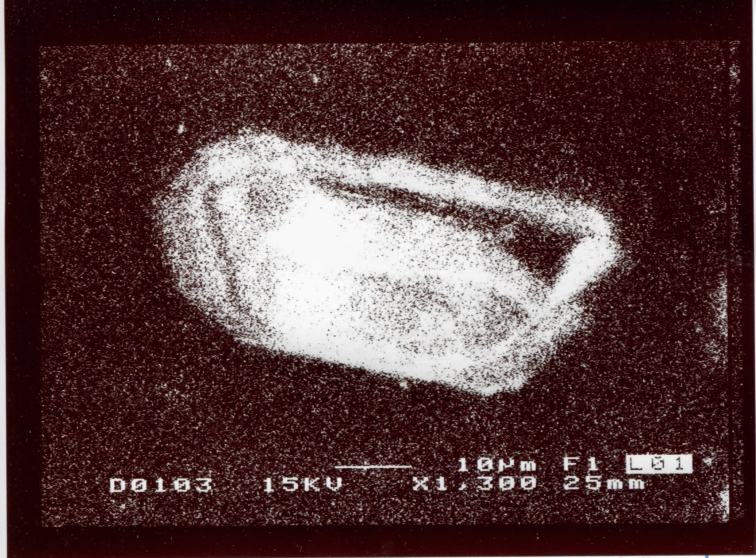


95-34, CL #3 787



95-34 CL 6-1 779

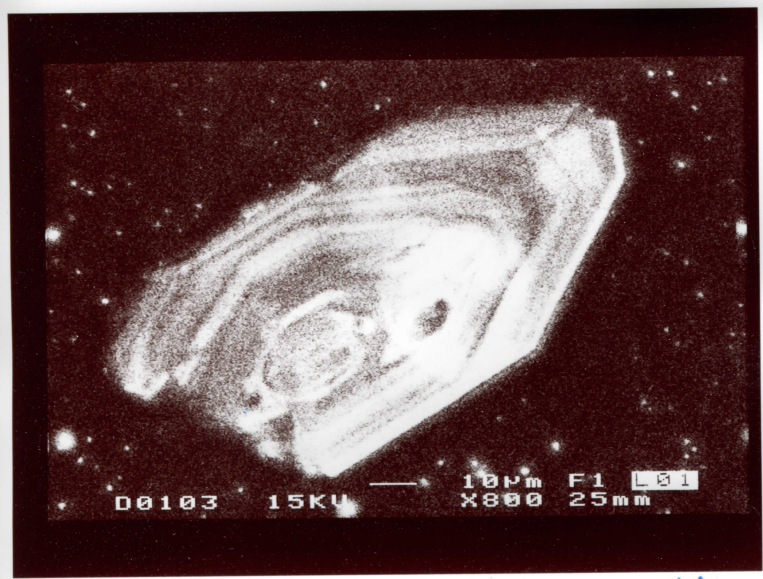




95-34 Grain 7, CL *Naphate*



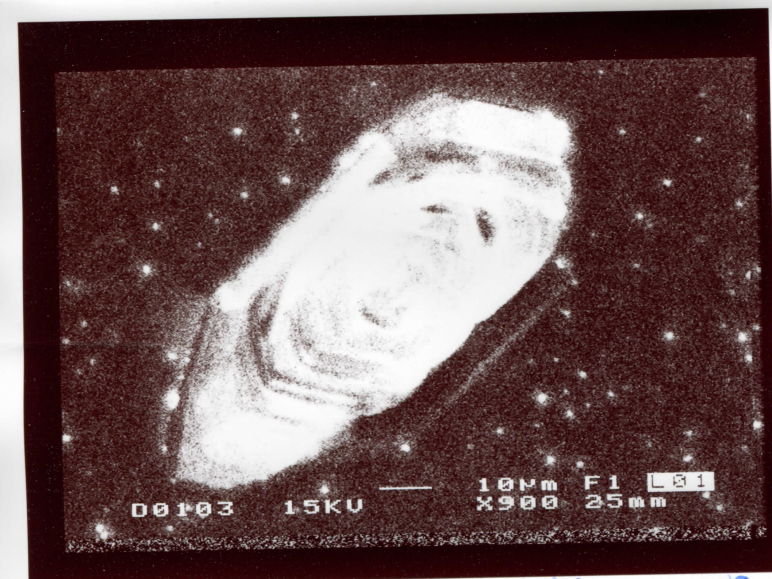
95-34, Grain #10, CL



95-34, Grain #8, Cp 14 CL 864



95-34, Grain #10, CL 804

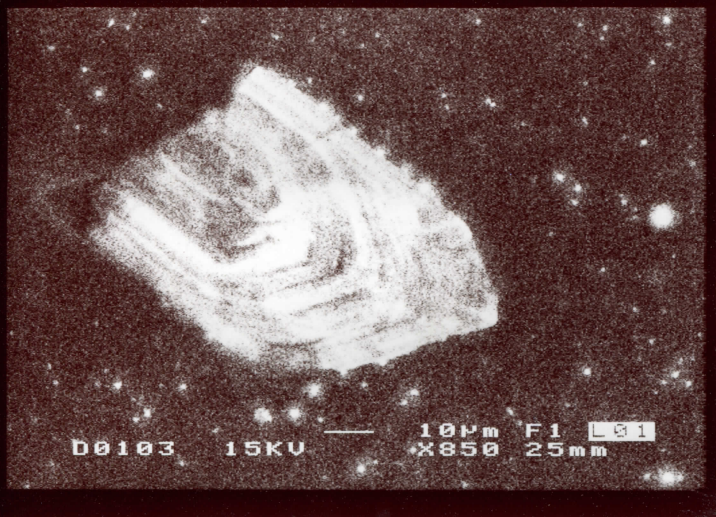


95-34, CL Grain #9, Cp 18 ~~812~~ 862

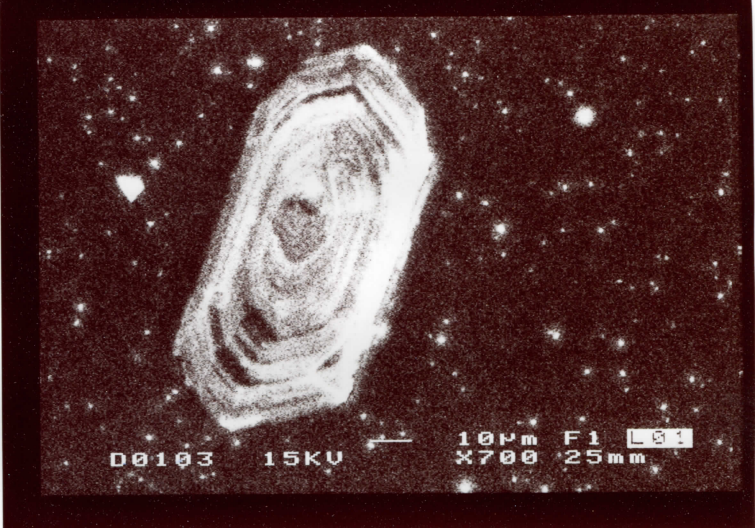


95-34, Grain #10, CL 82

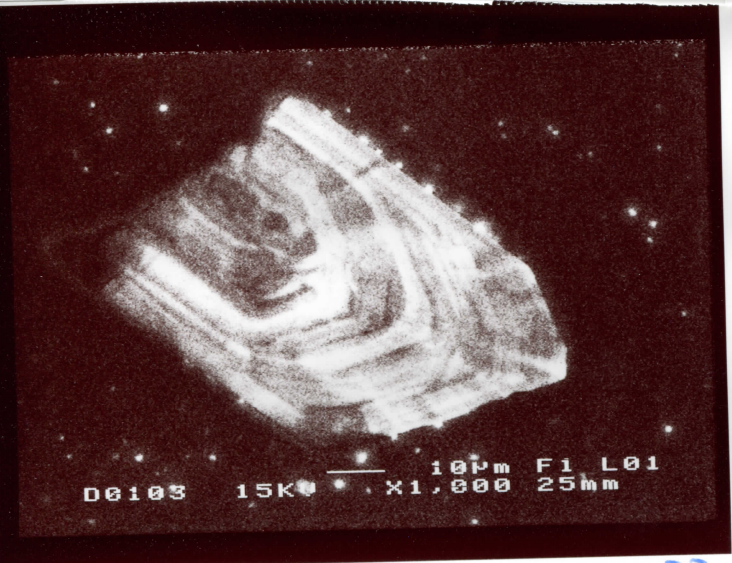




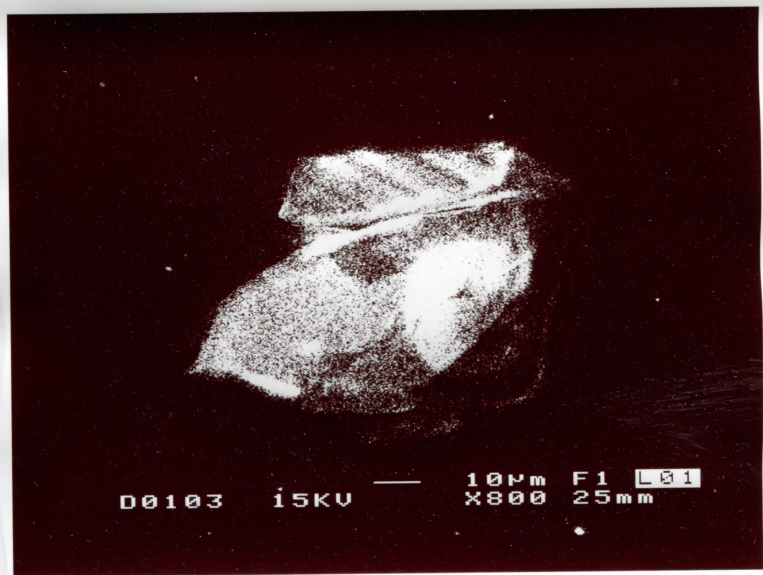
Grain # 11, 95-34 CL 808



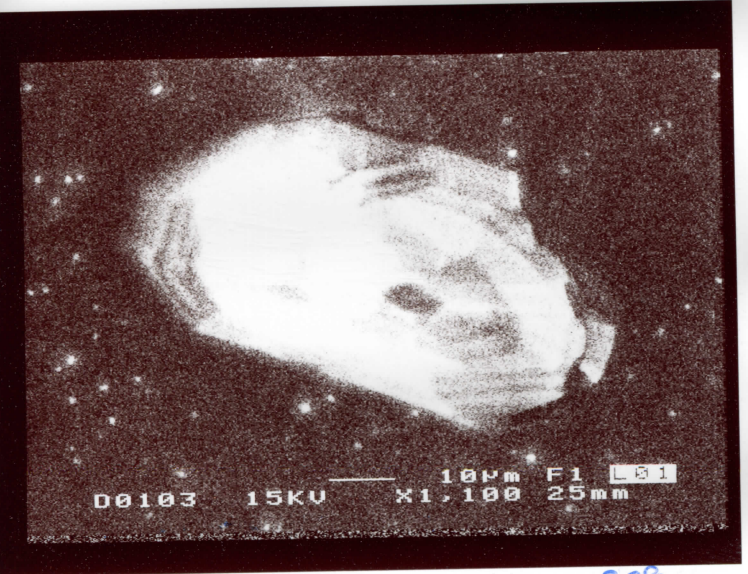
95-34, Grain # 13, CL 810



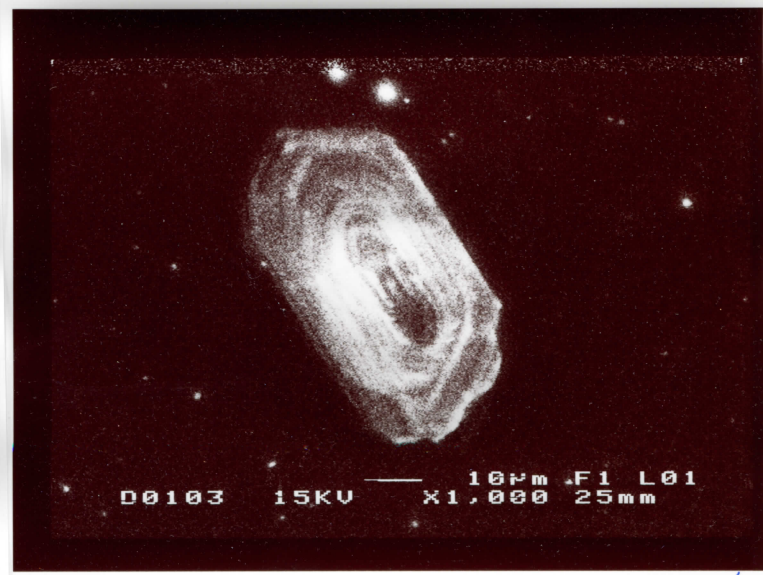
95-34, Grain # 12, CL 822



95-34, # 14, CL, Cp43 N9 photo

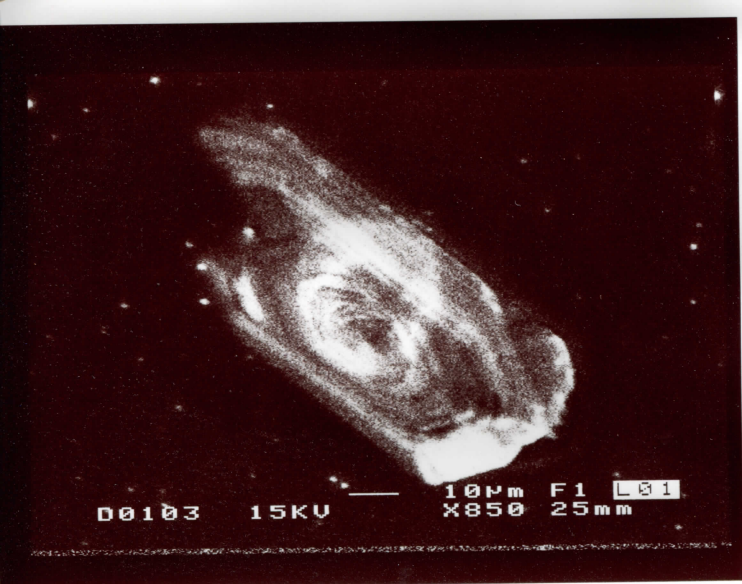


95-34, Grain # 12, CL, Cp9 808

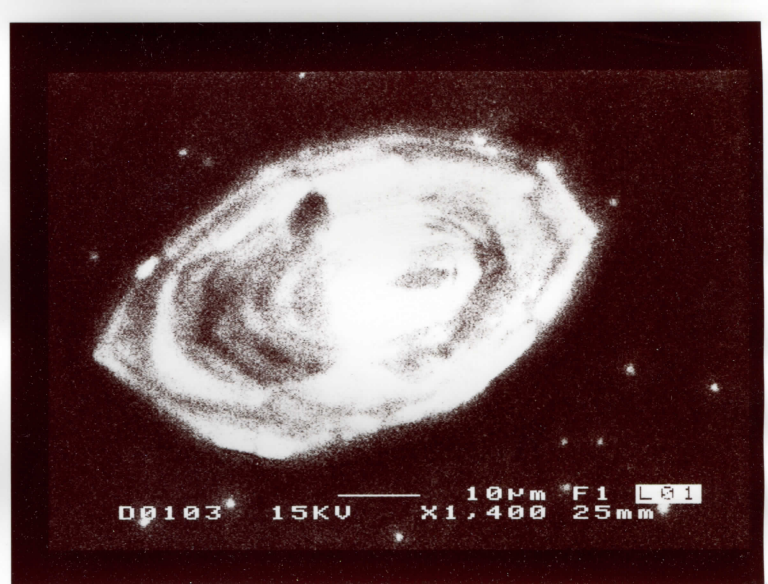


95-34 CL, grain # 15, Cp58 794

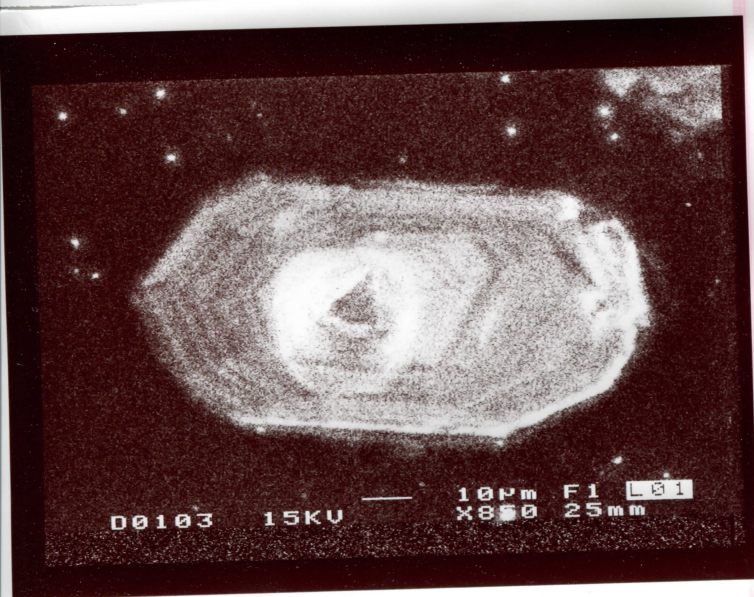




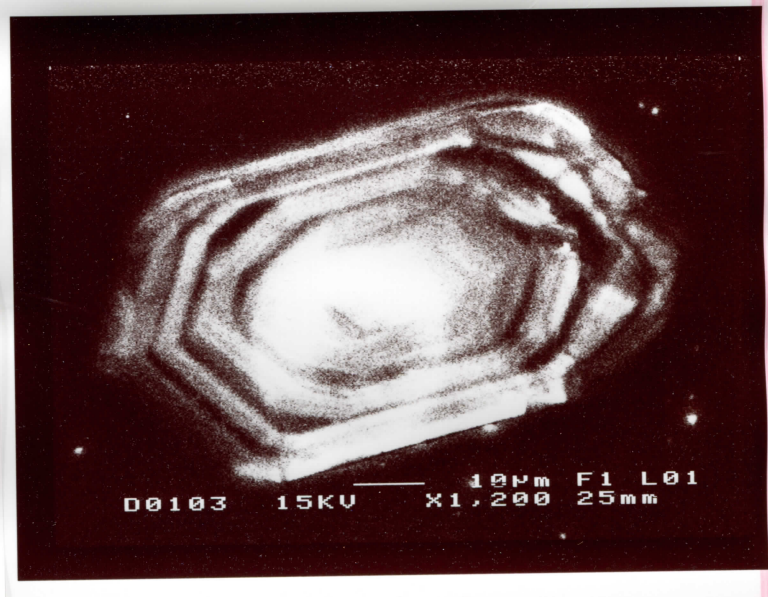
Grain #17, CL, 95-34 819



95-34, Grain #20, CL 803, but end of film



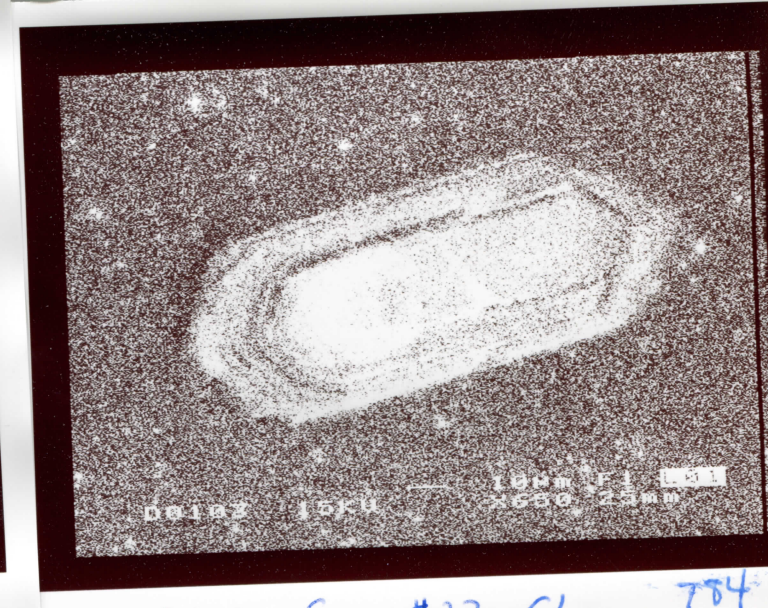
95-34 - CL #18 798



95-34, CL, Grain #21, Cp62 798

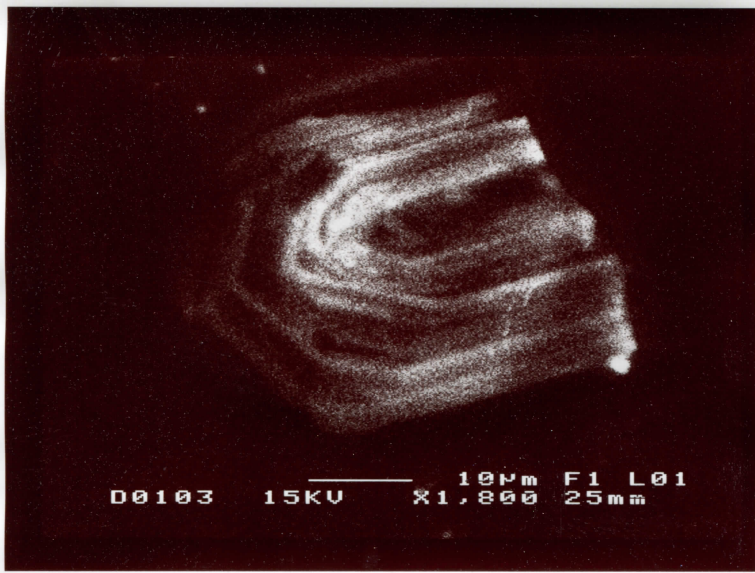


95-34, Grain #19, CL 800



95-34, Grain #22, CL 784





Grain #23, CL, Cp 45,

95-34

290