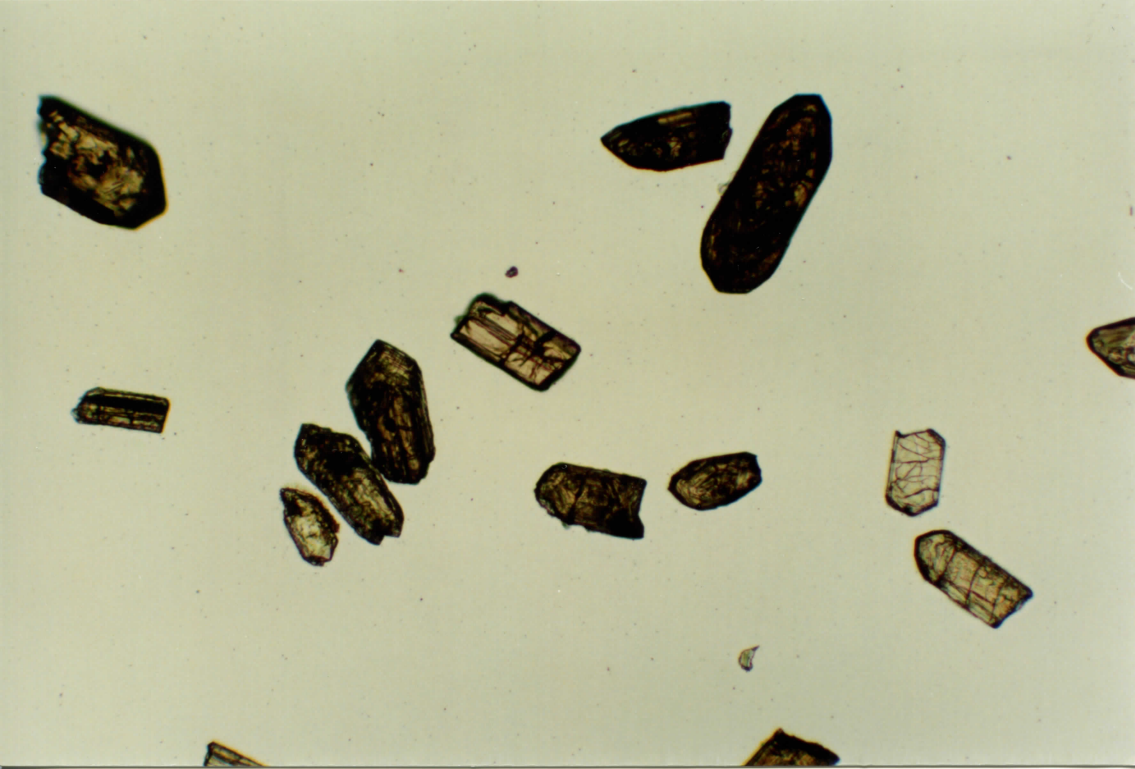
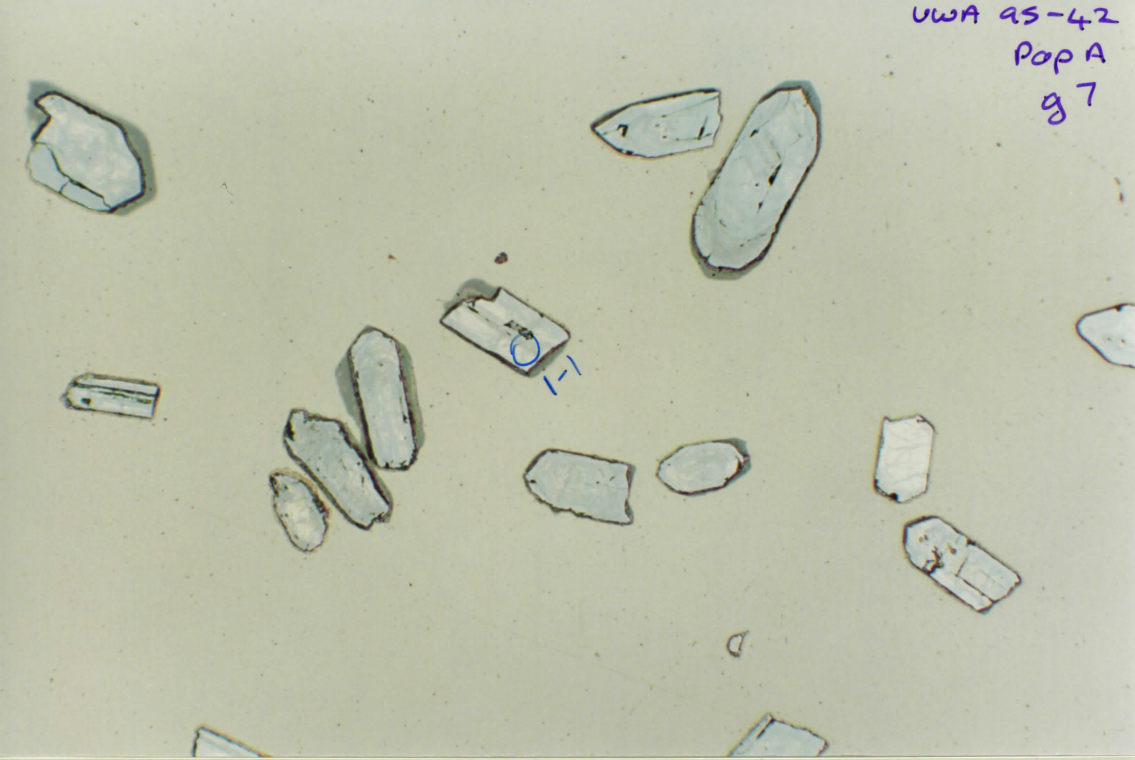
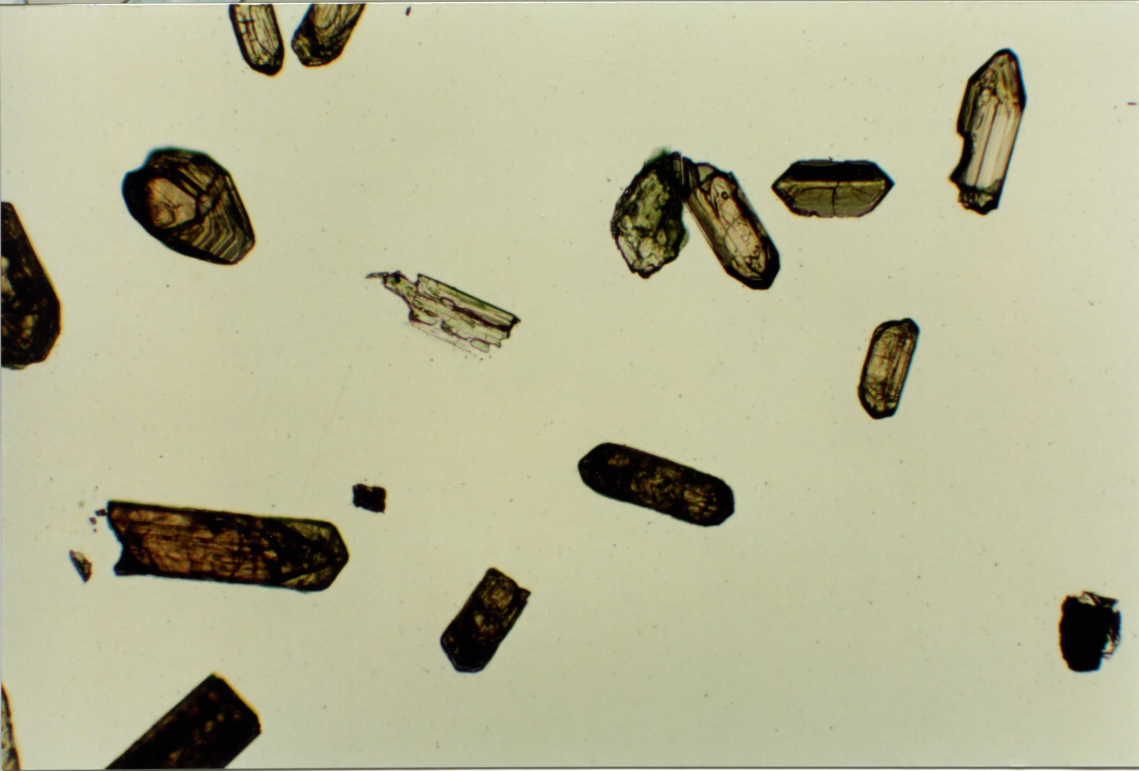
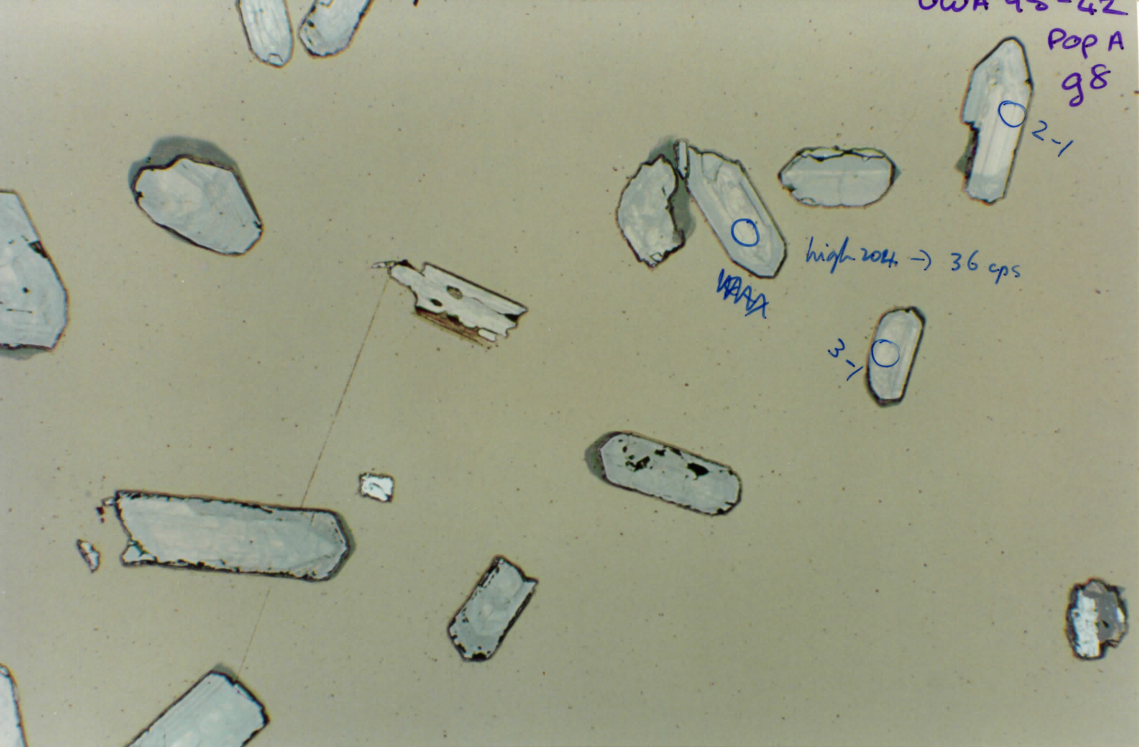
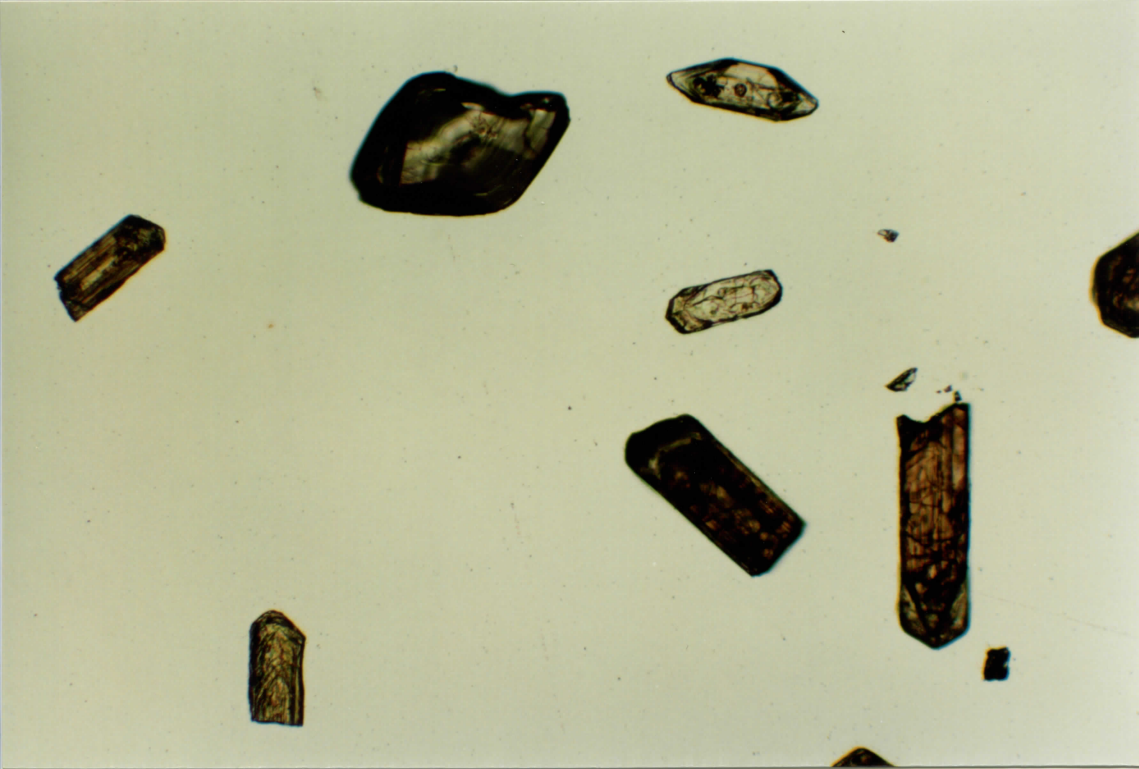
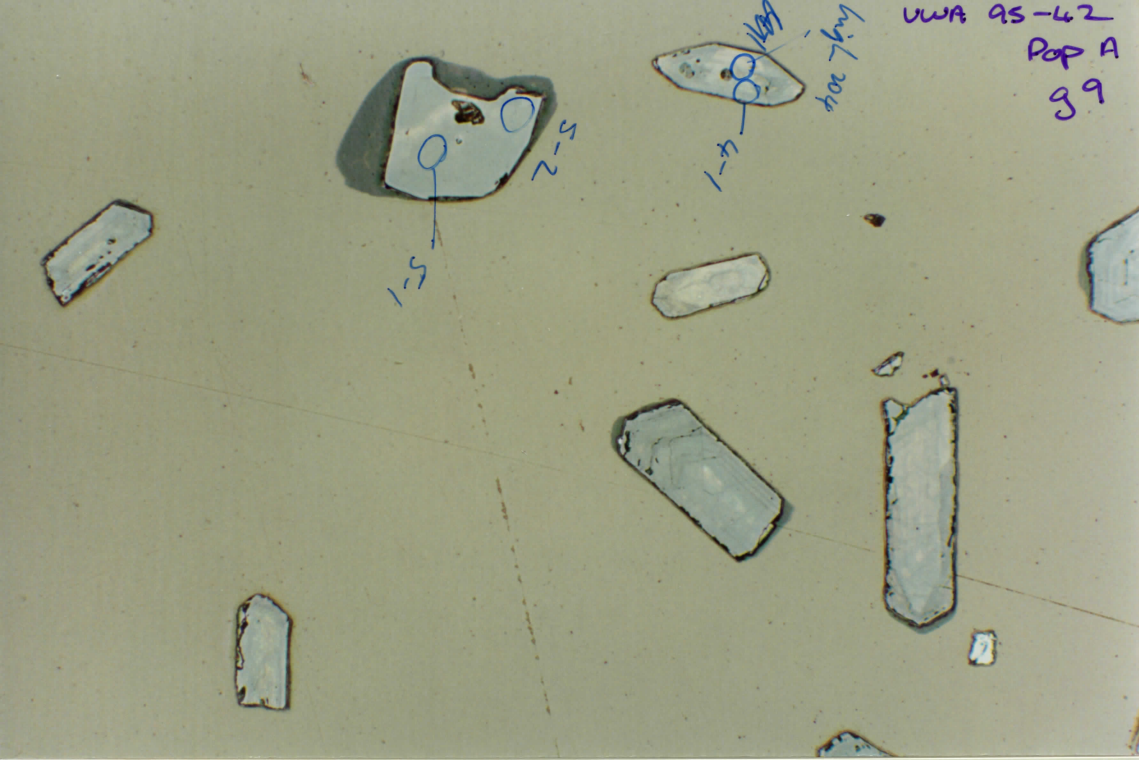


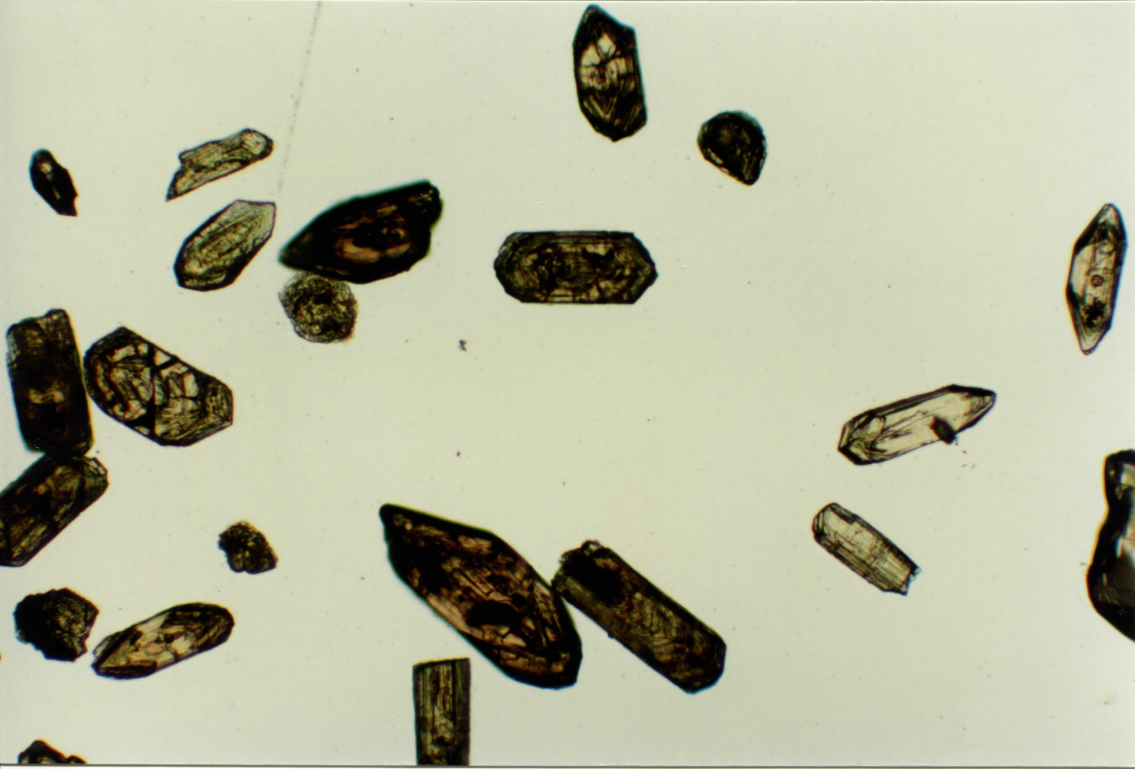
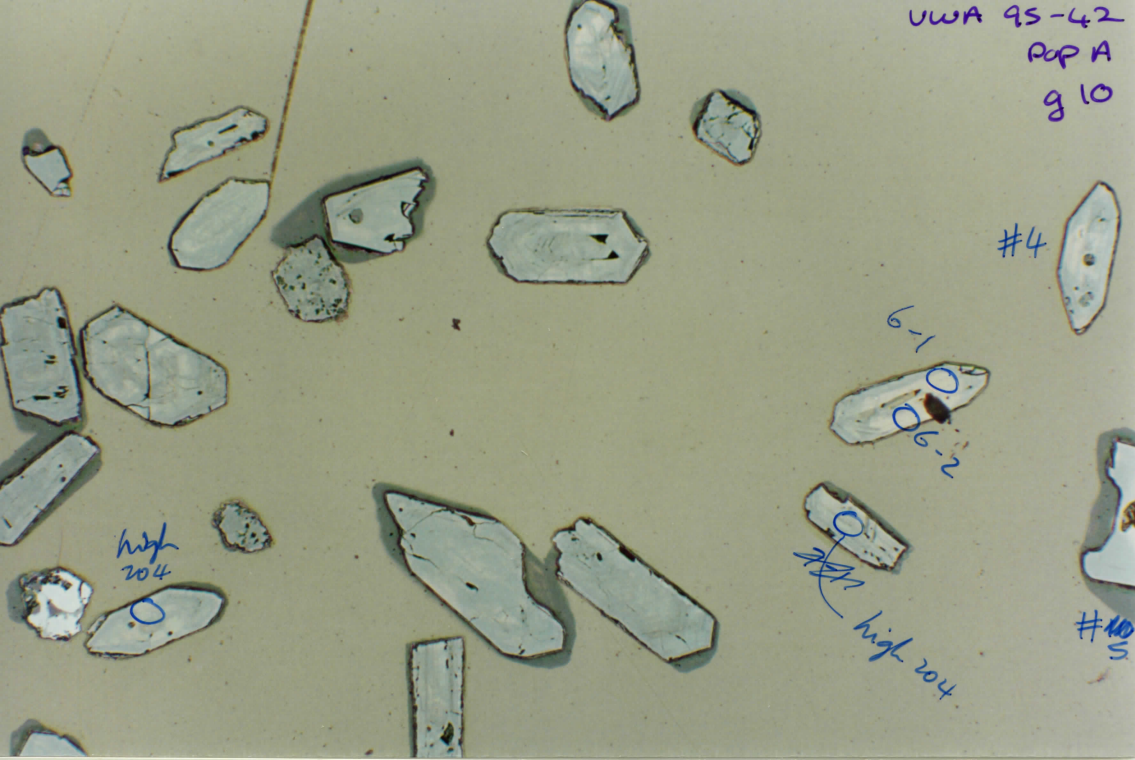
UWA 95-42
Pop A
g 7







UWA 95-42
POP A
g 10



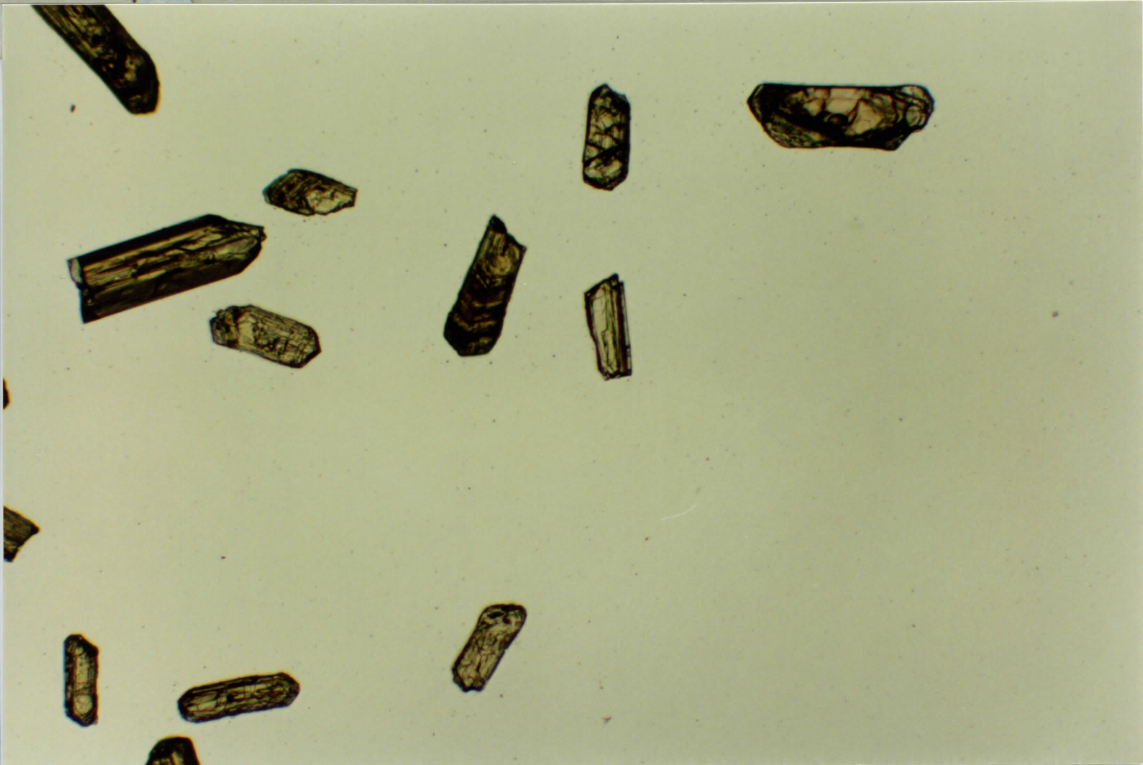
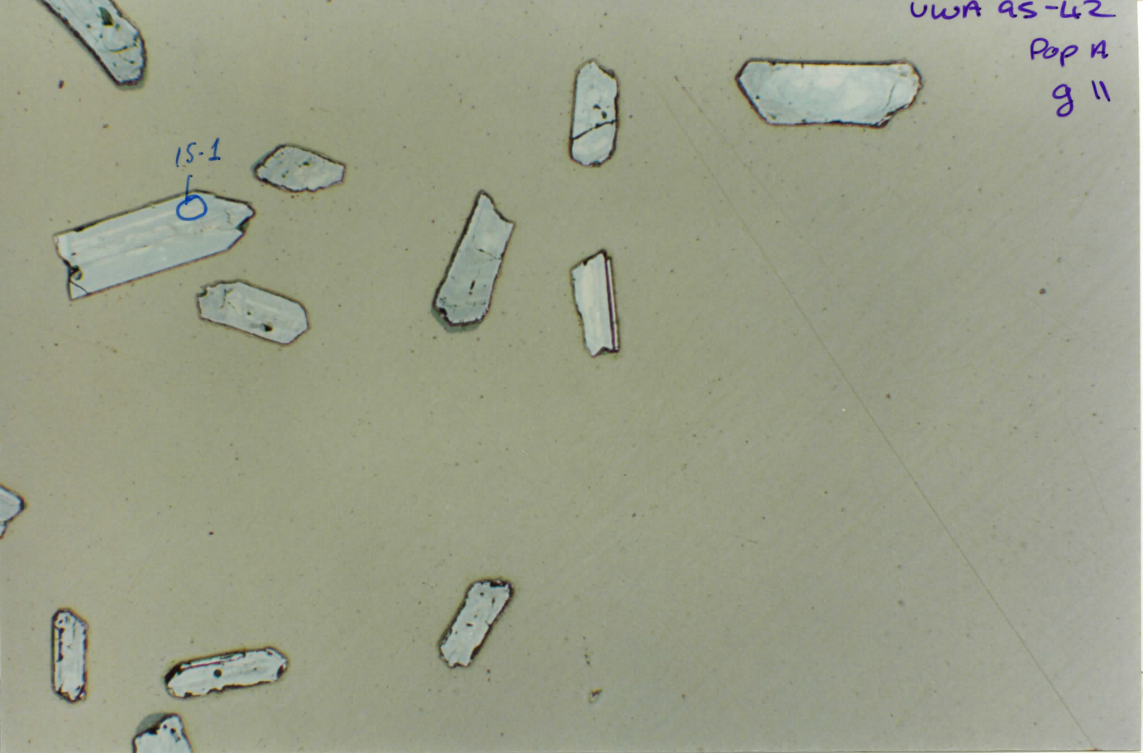
UWA 95-42

Pop A

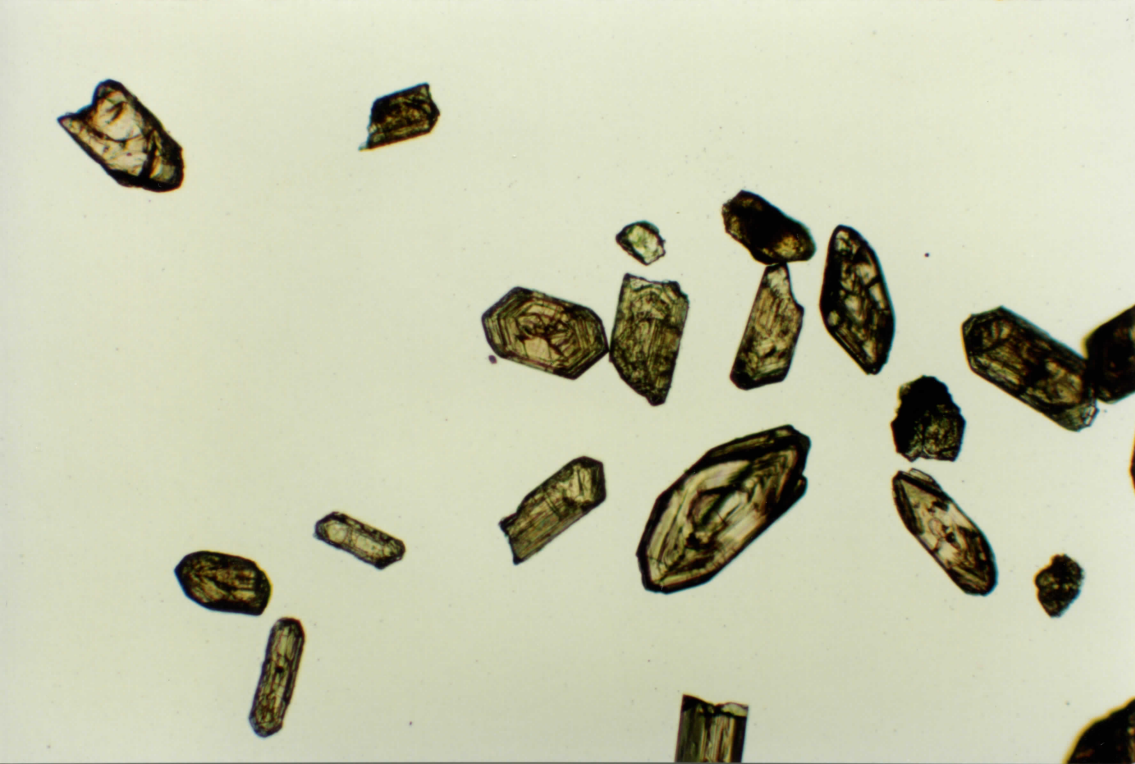
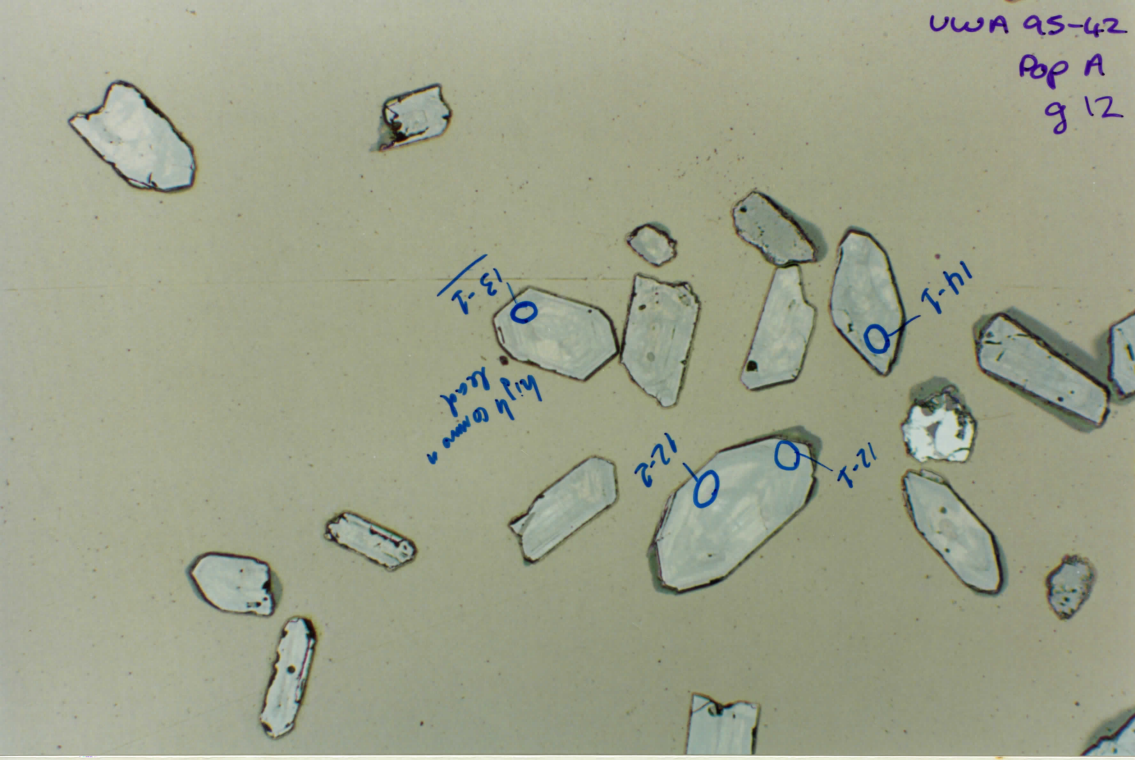
g 11

15-1

6

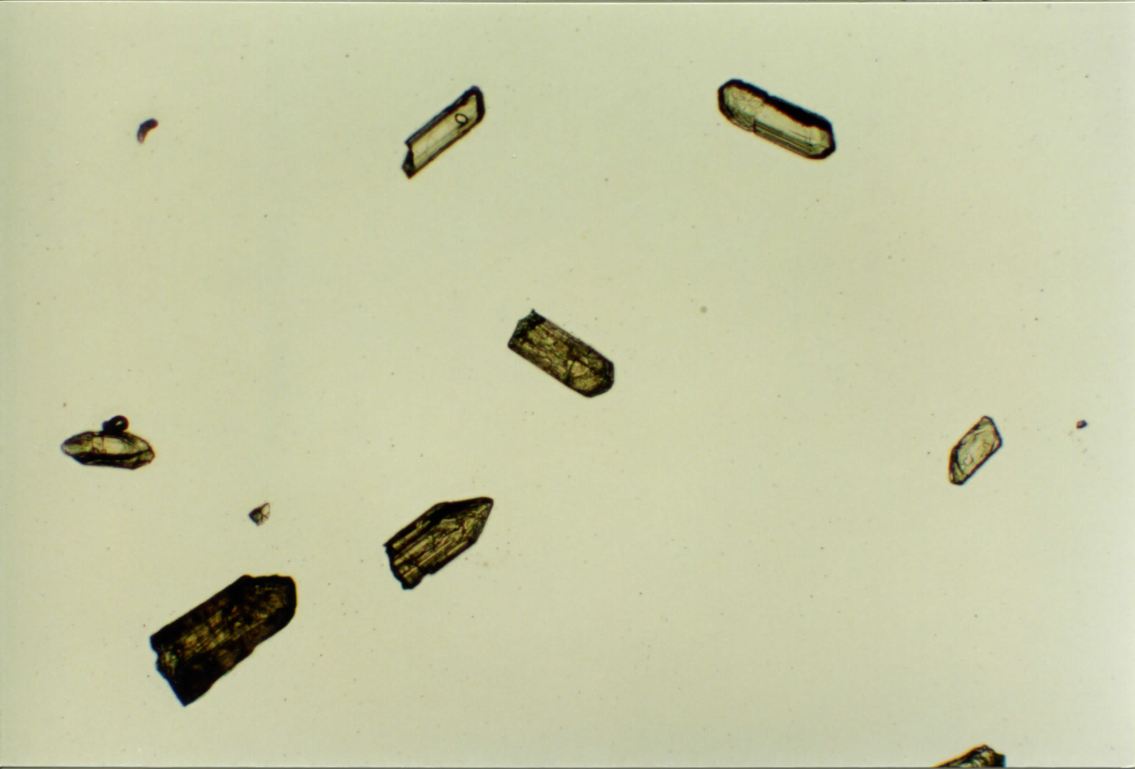
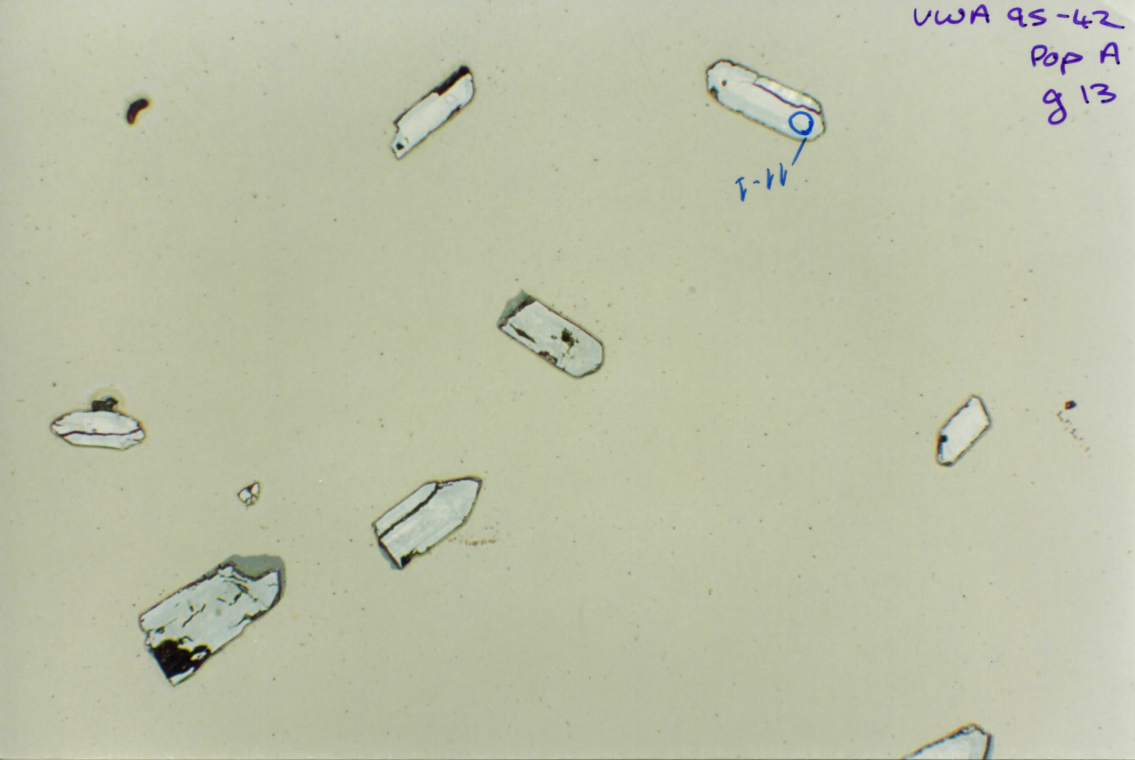


UWA 95-42
Pop A
g 12

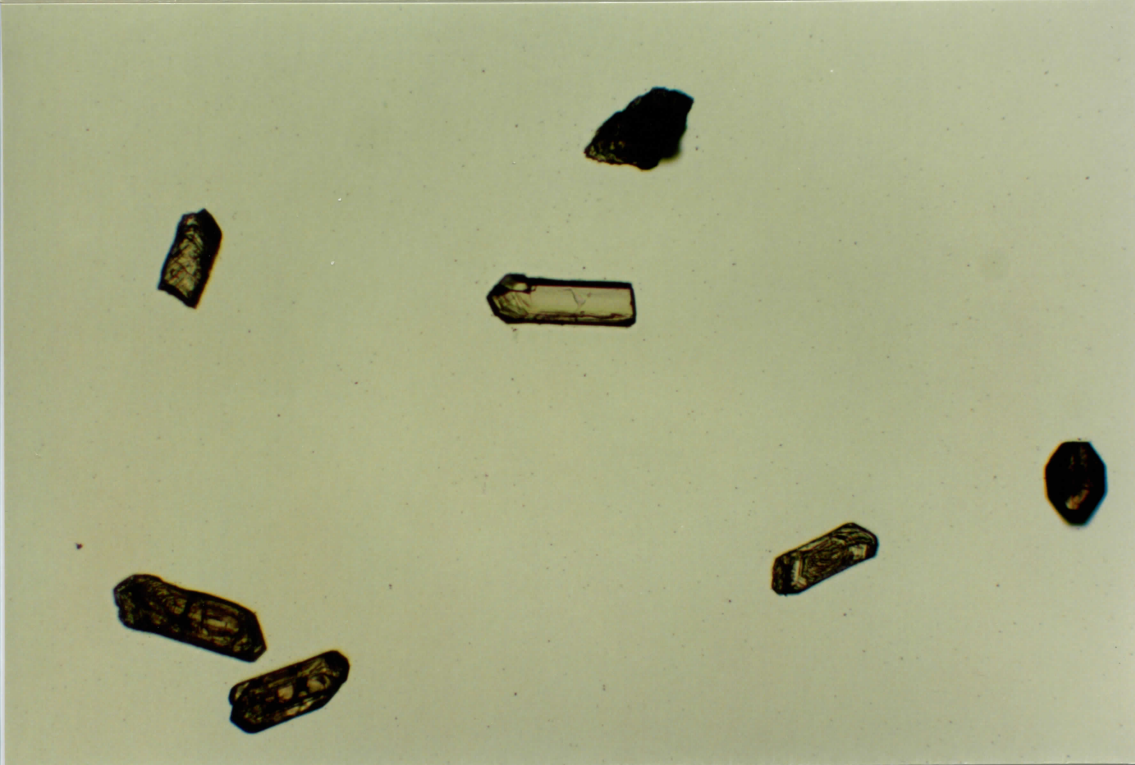
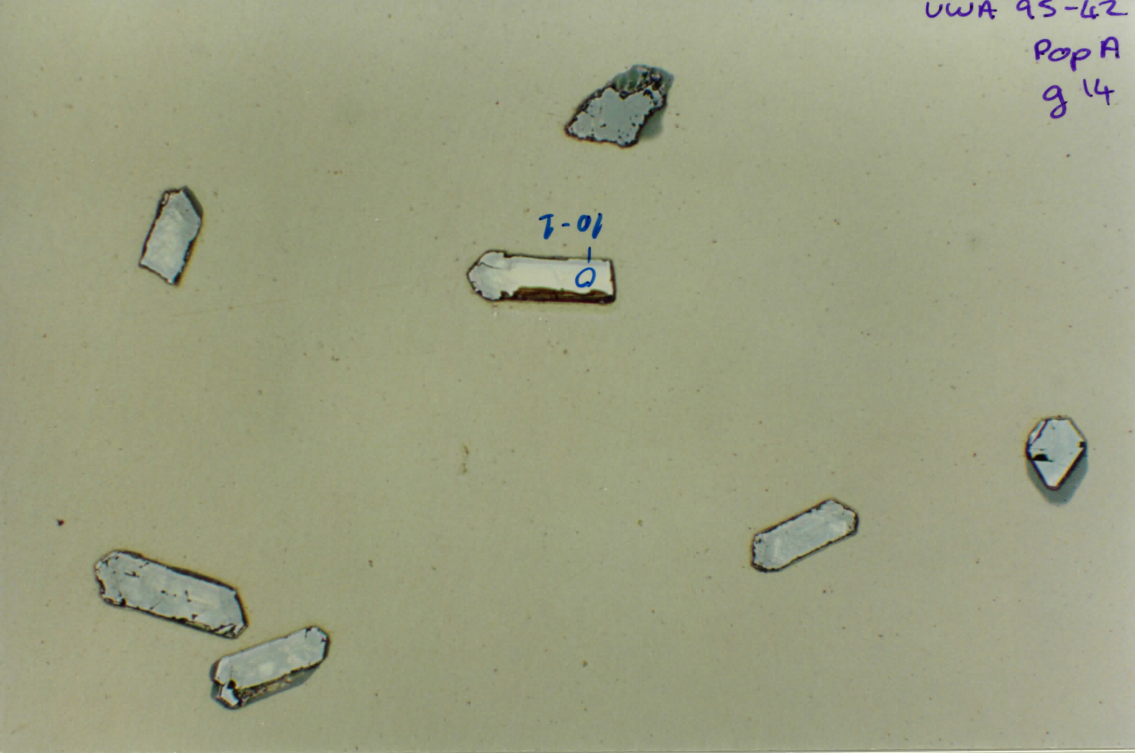


VWA 95-42
Pop A
g 13

F-11



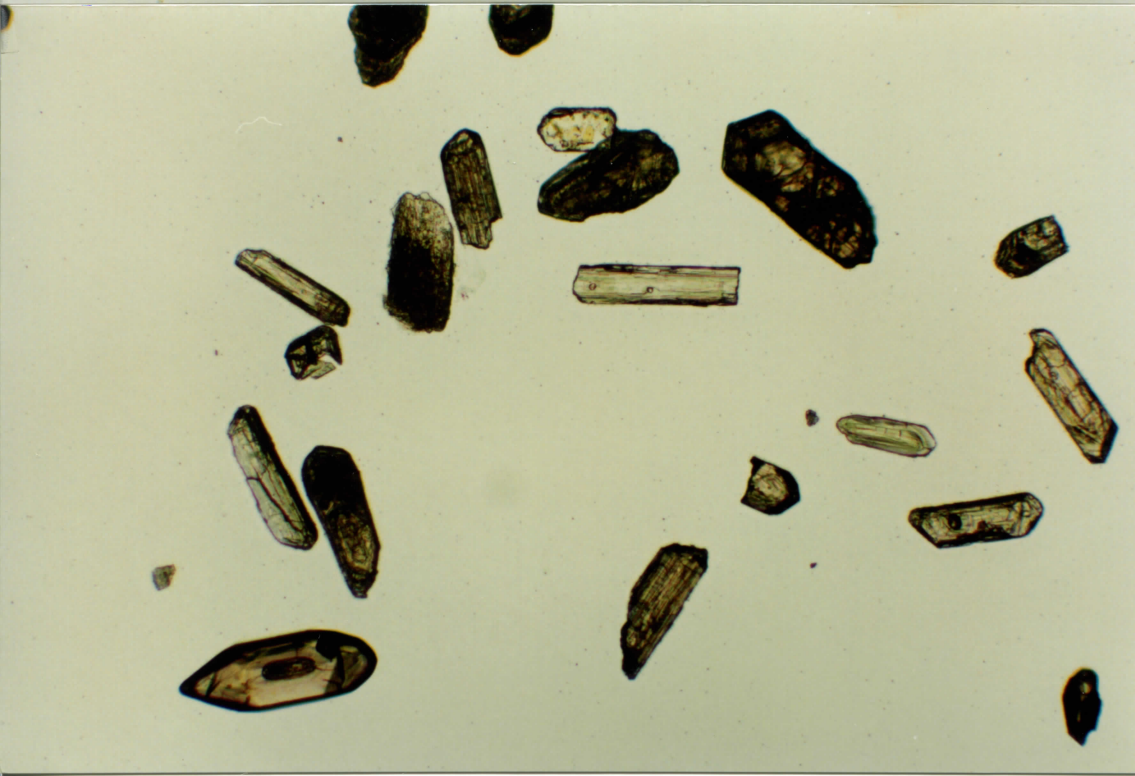
UWA 95-62
Pop A
g 14



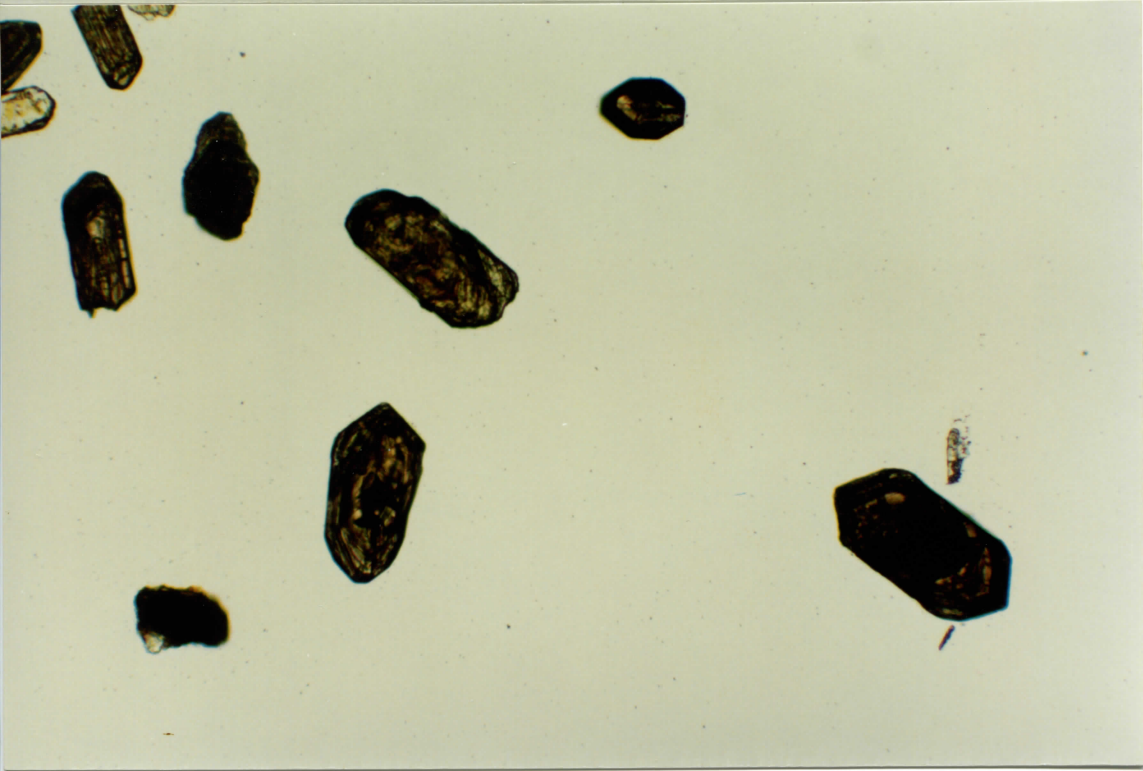
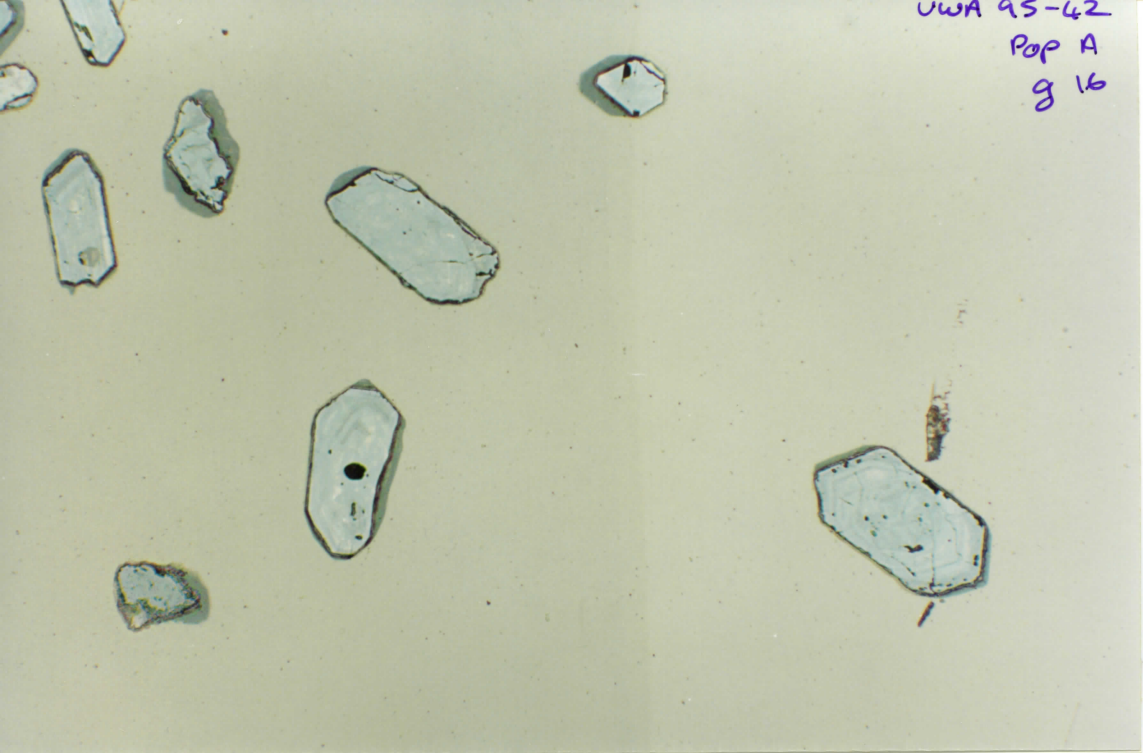
UWA 95-42
Pop A
g 15

Midway
aberrant
g-16

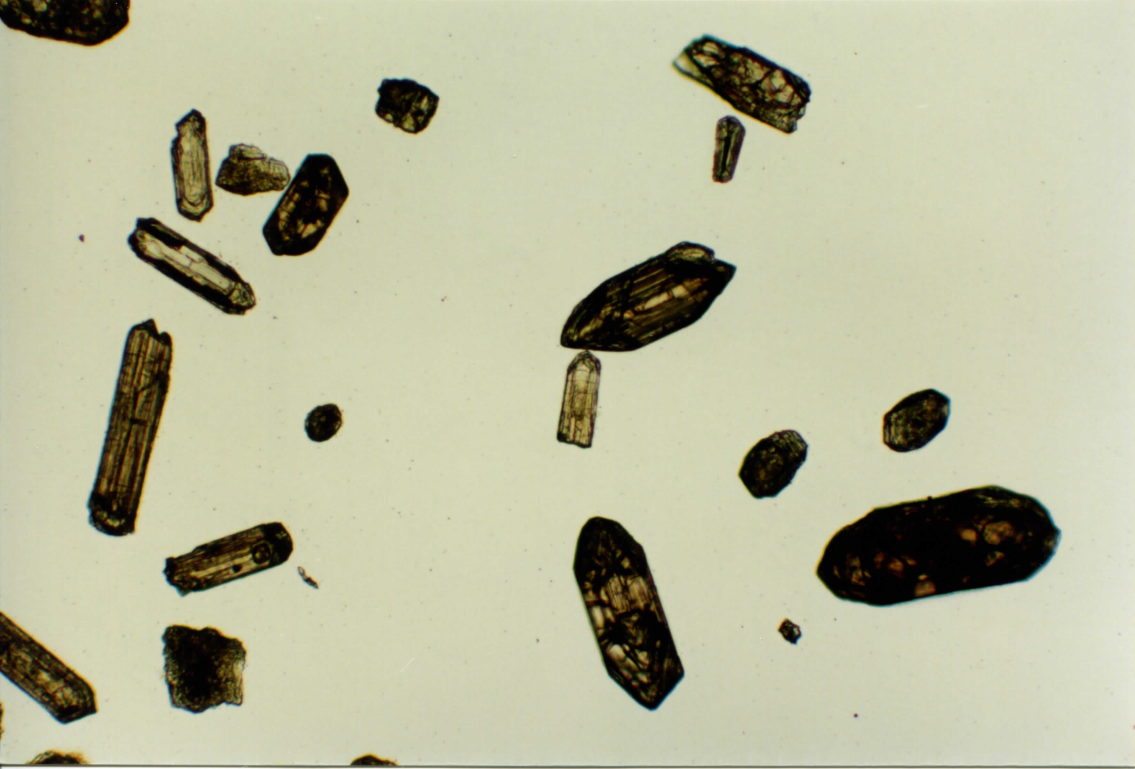
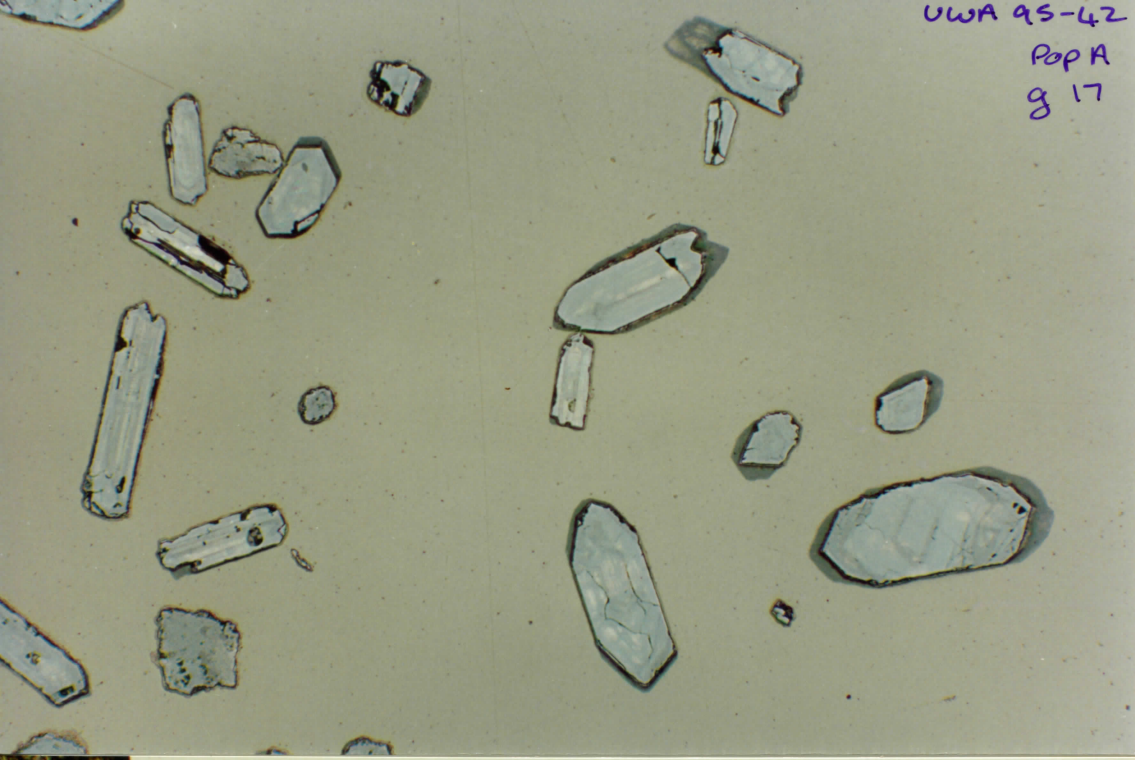
8-2
1-8



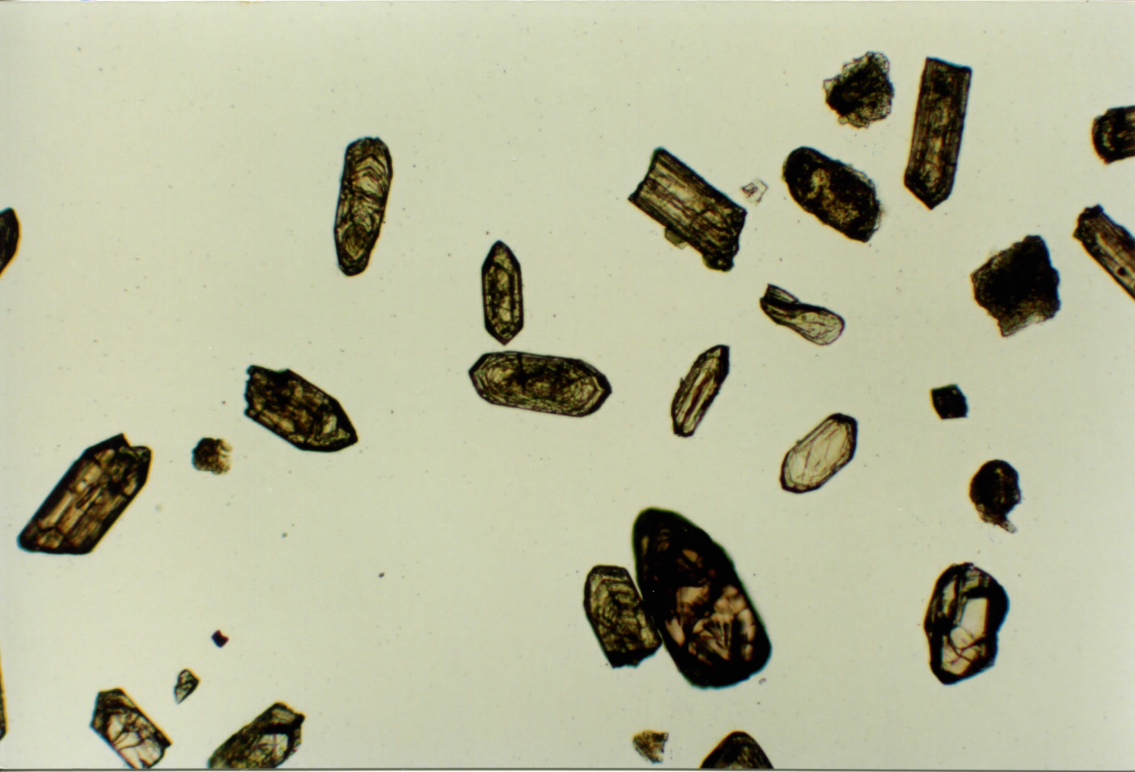
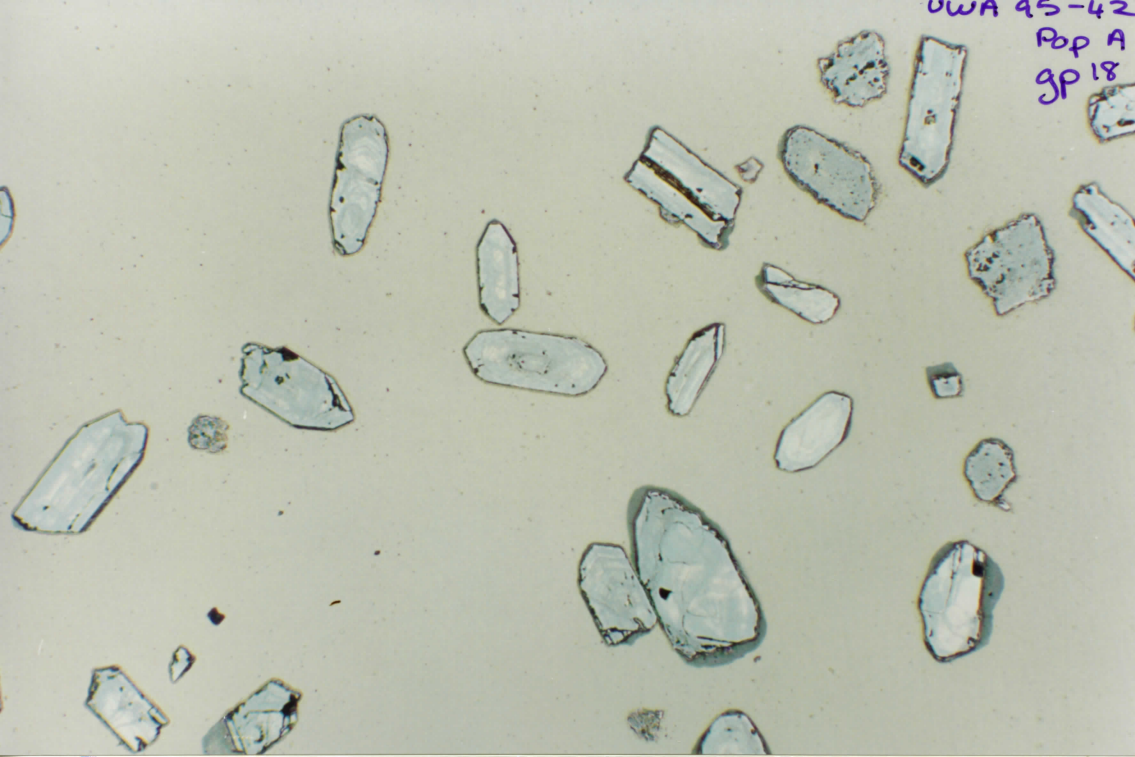
UWA 95-42
Pop A
g 16



UWA 95-42
Pop A
g 17



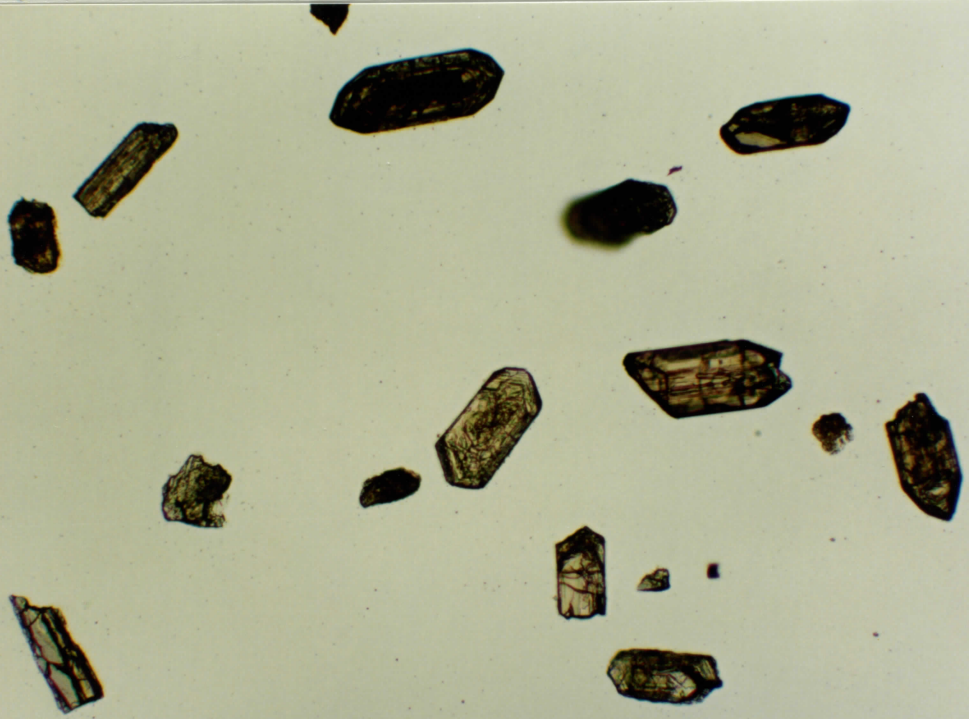
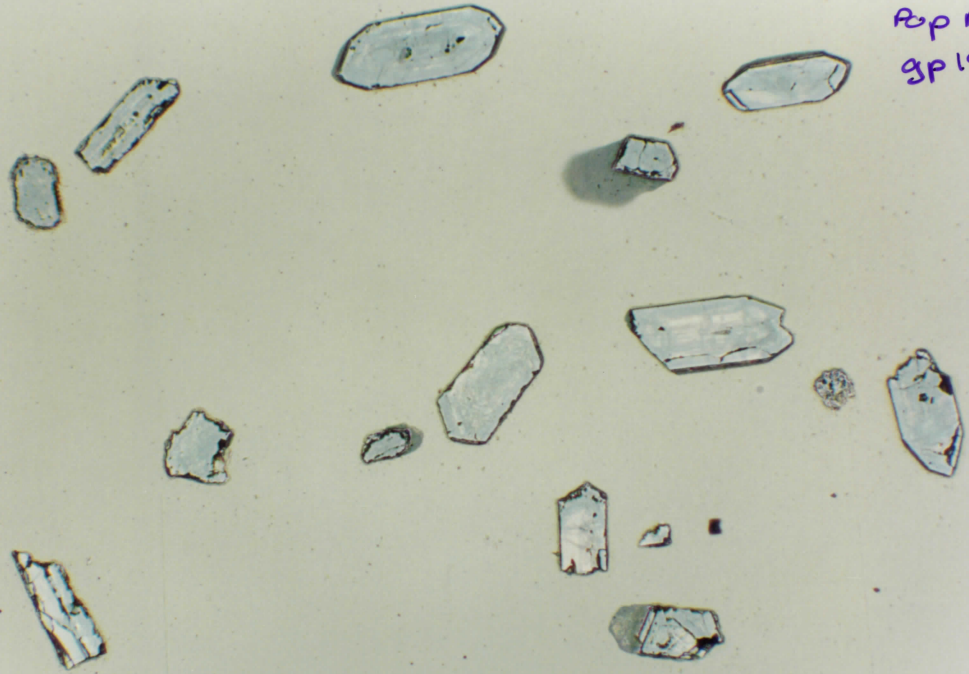
OWA 95-42
Pop A
gp 18



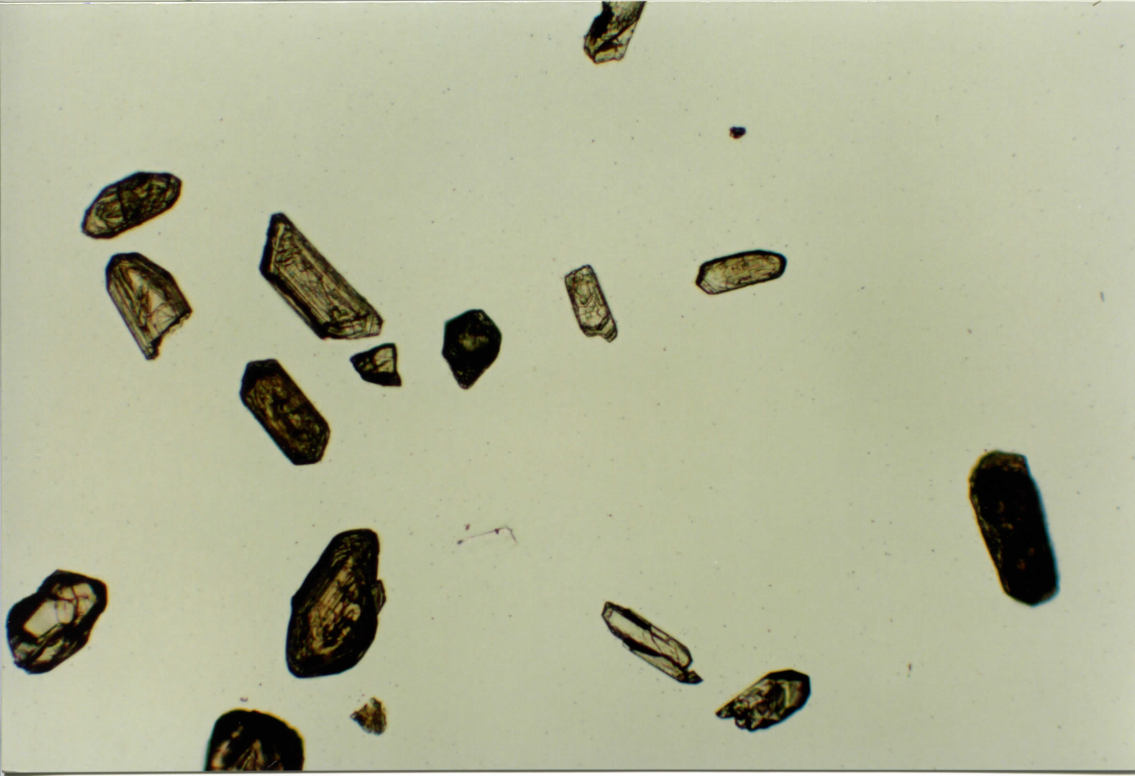
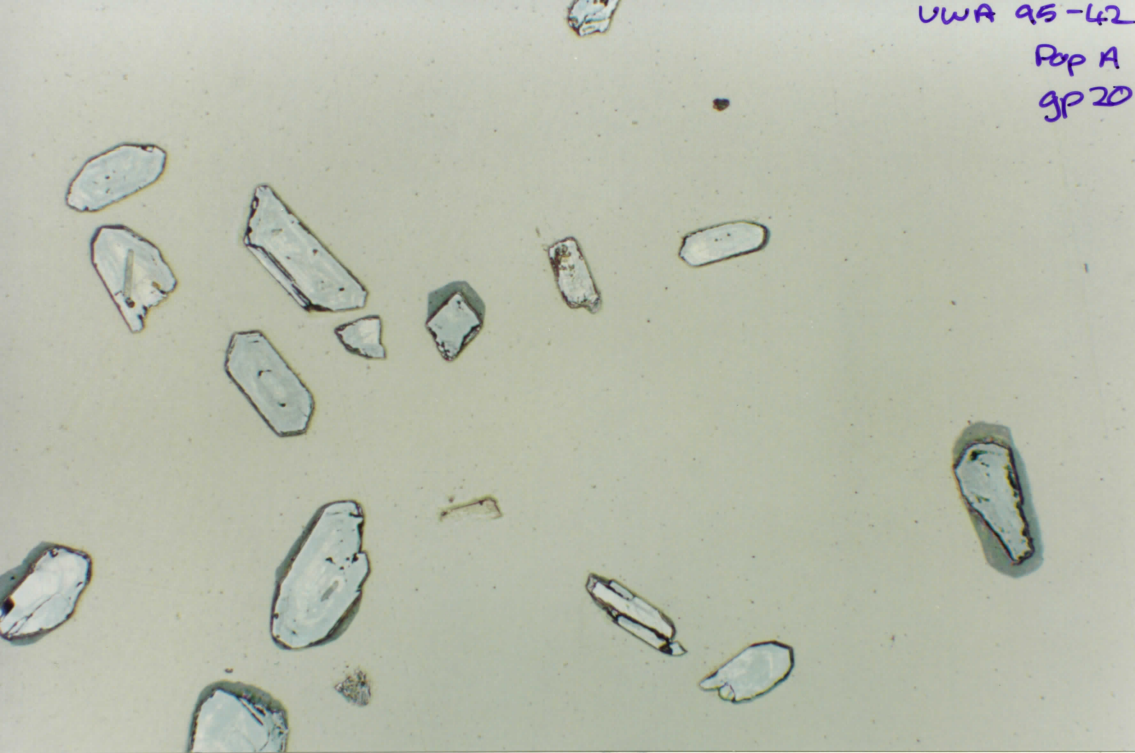
UWA 95-42

Pop A

gp 19



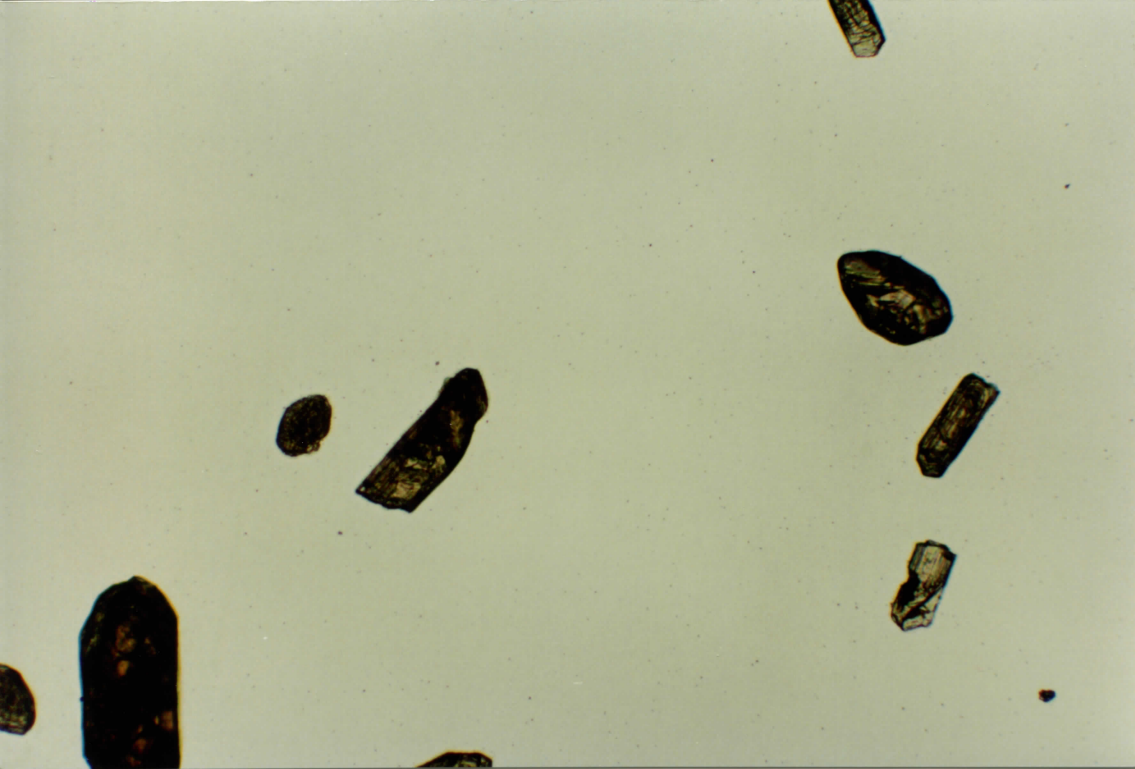
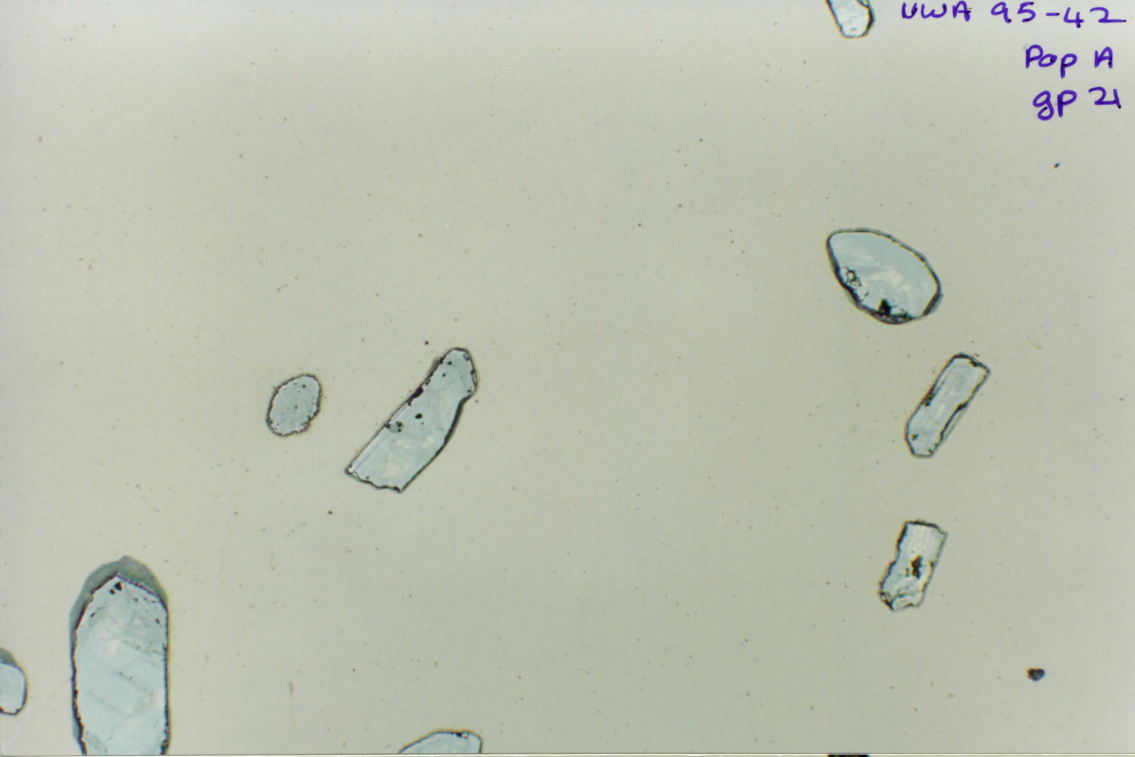
UWA 95-42
Pop A
gp 20



UWA 95-42

Pop A

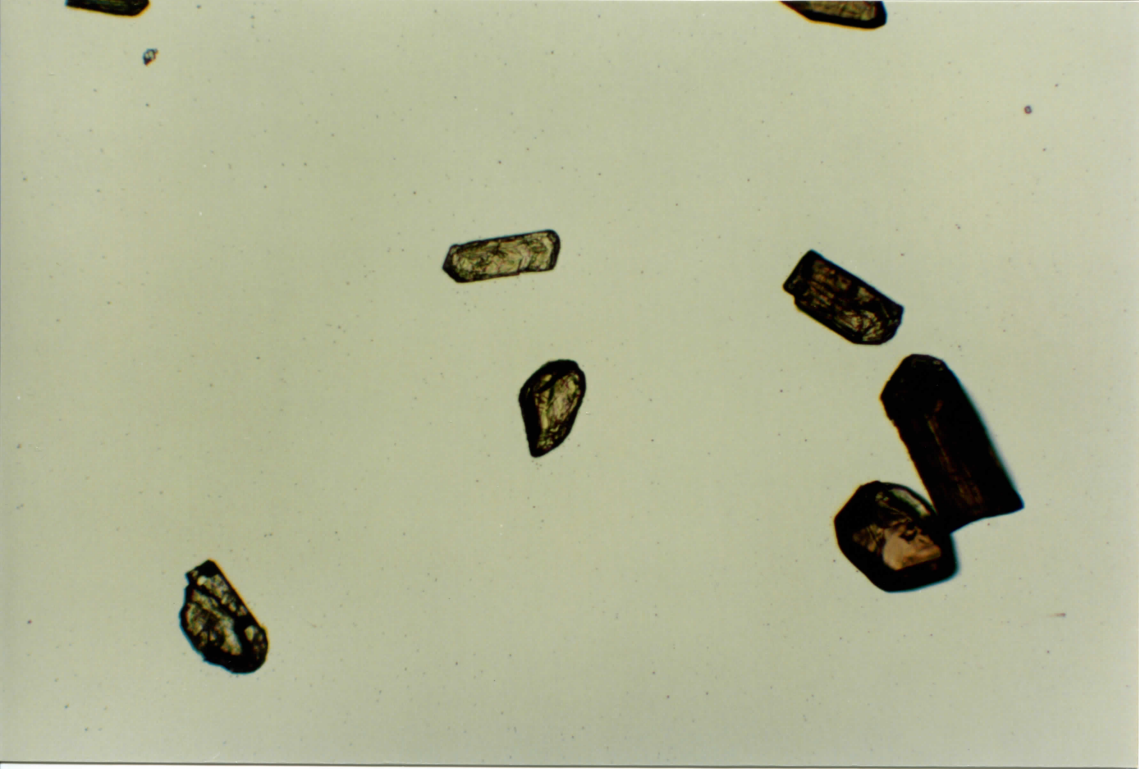
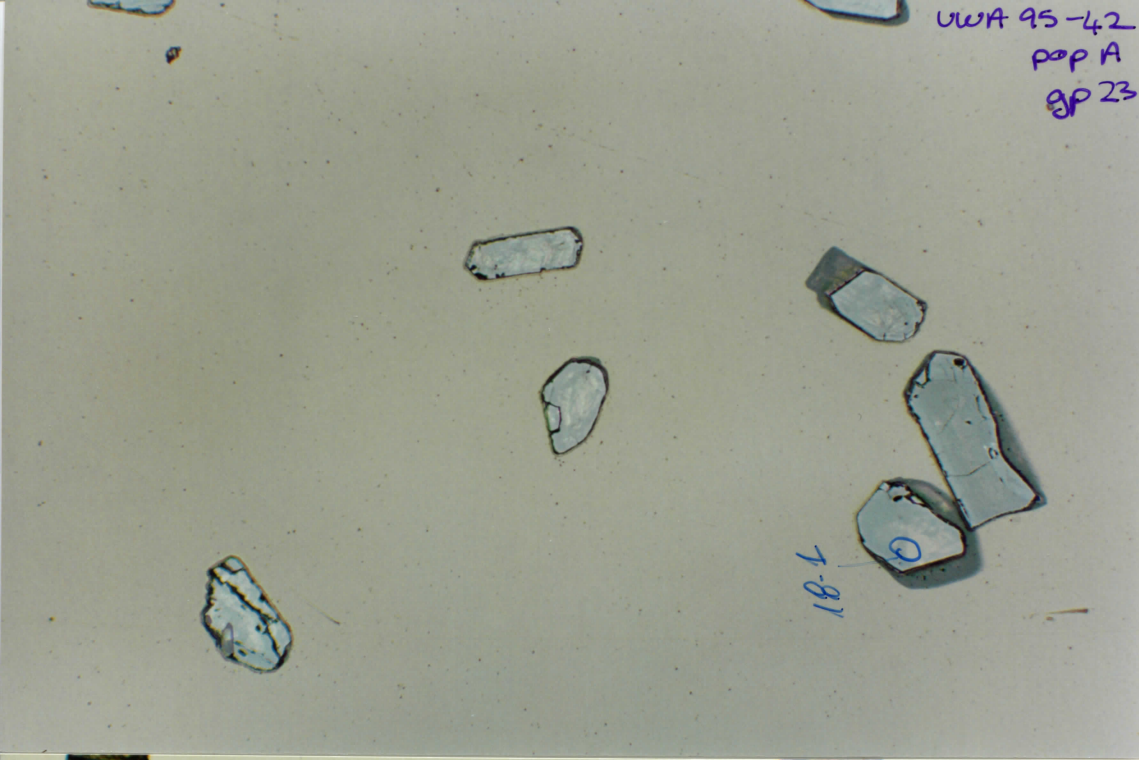
GP 21



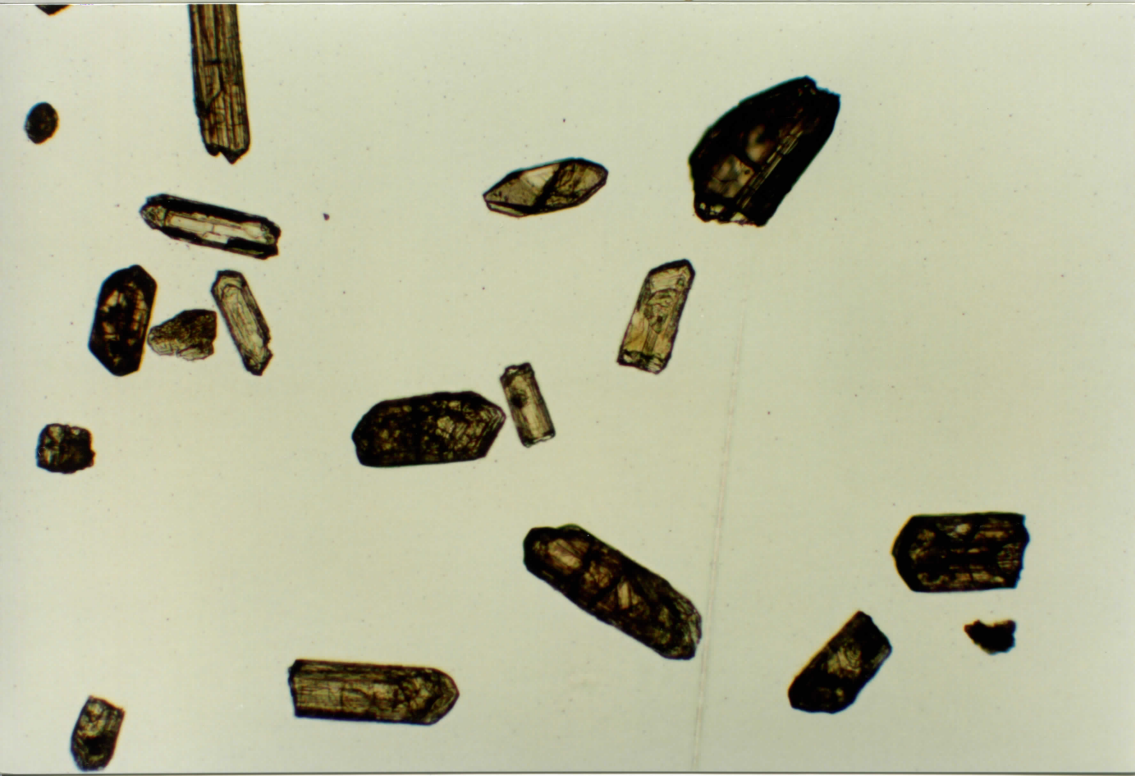
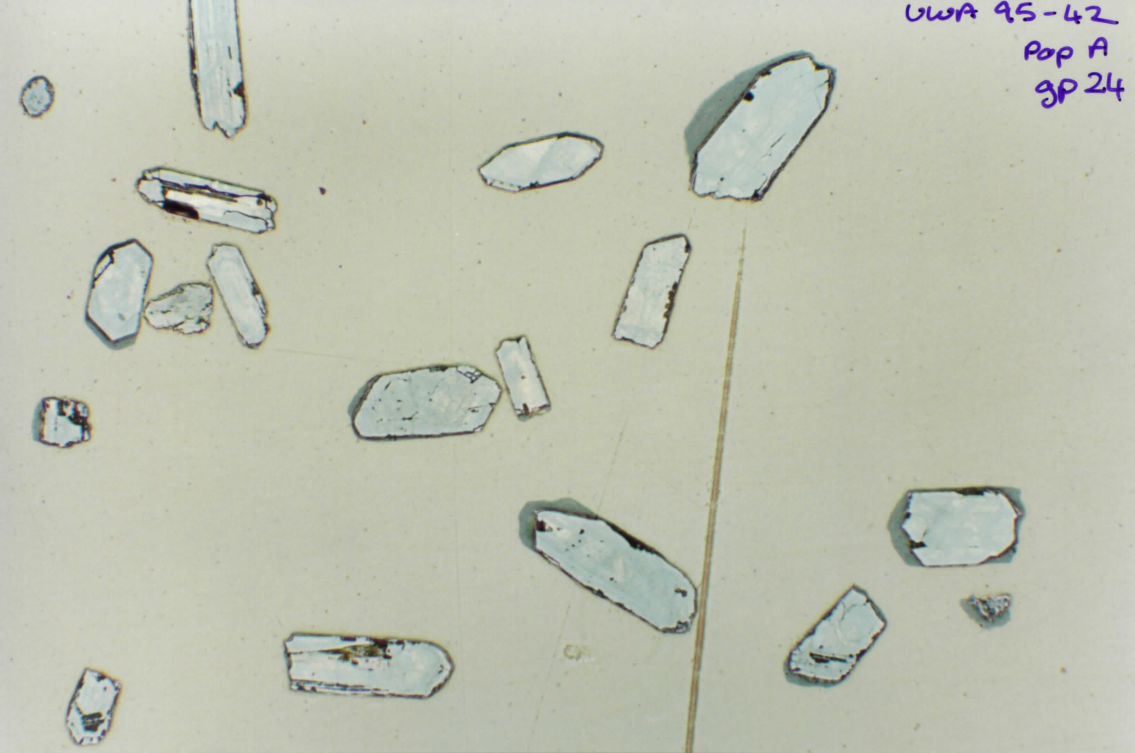
UWA 45-42
Pop A
gp 22



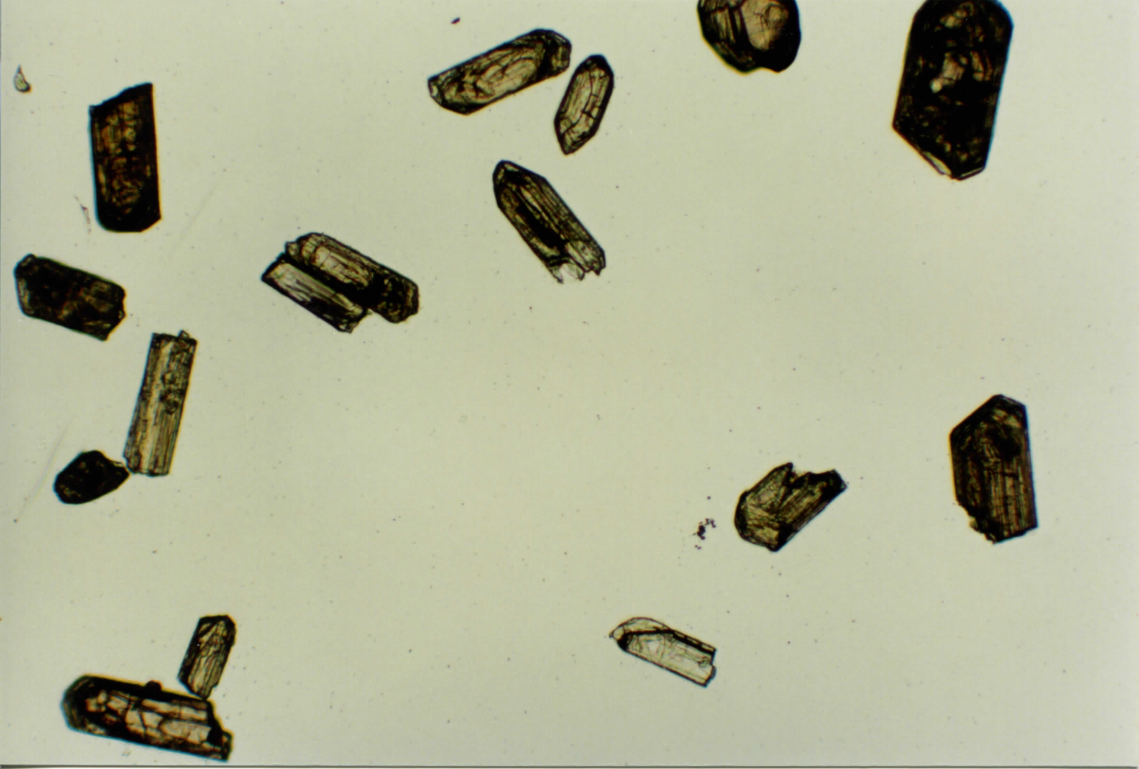
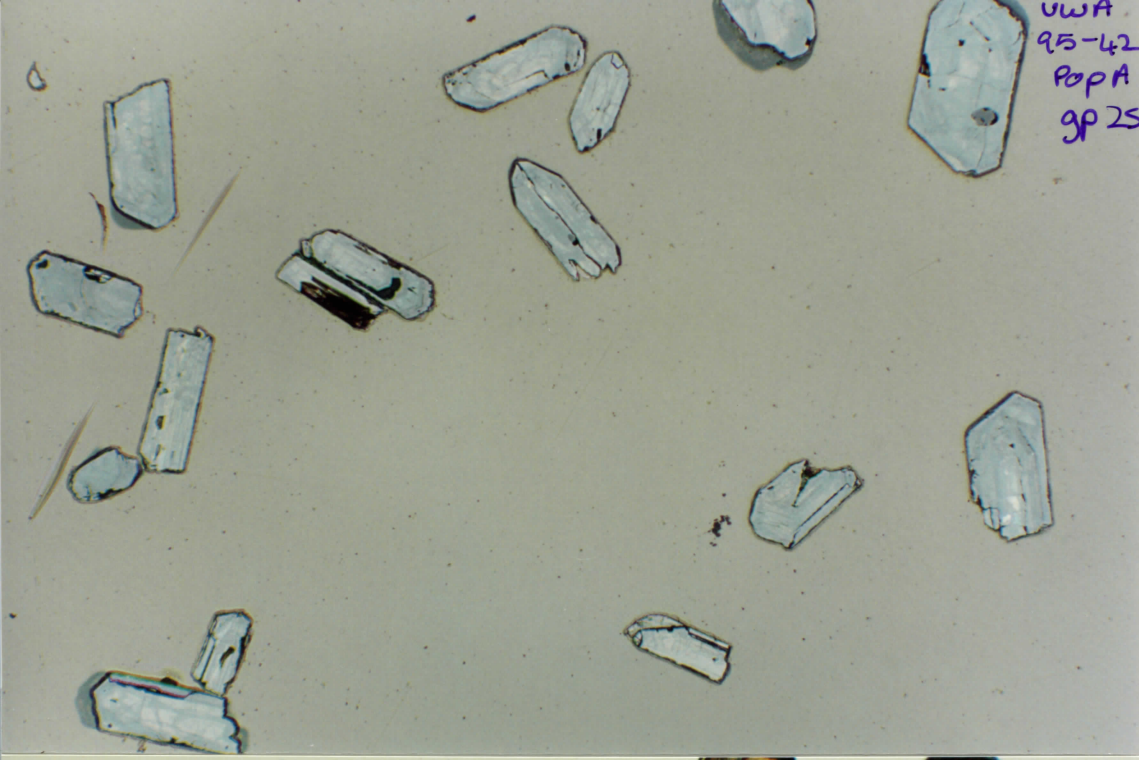
UWA 95-42
POP A
SP 23



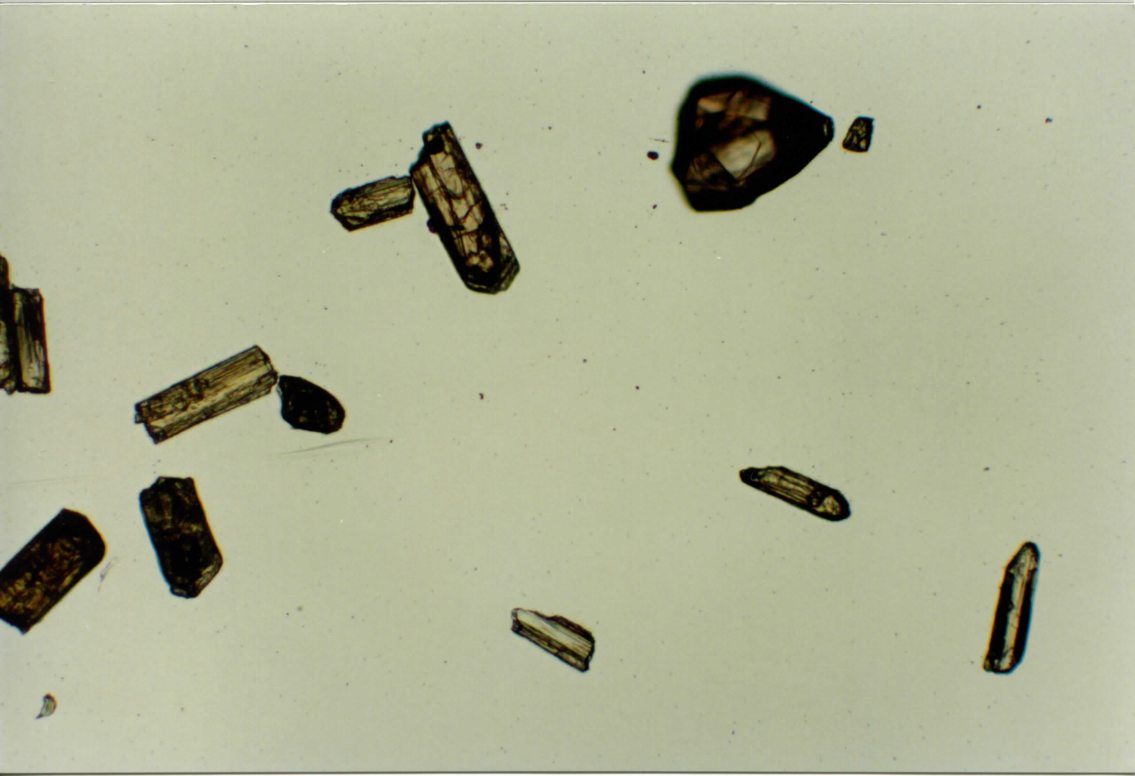
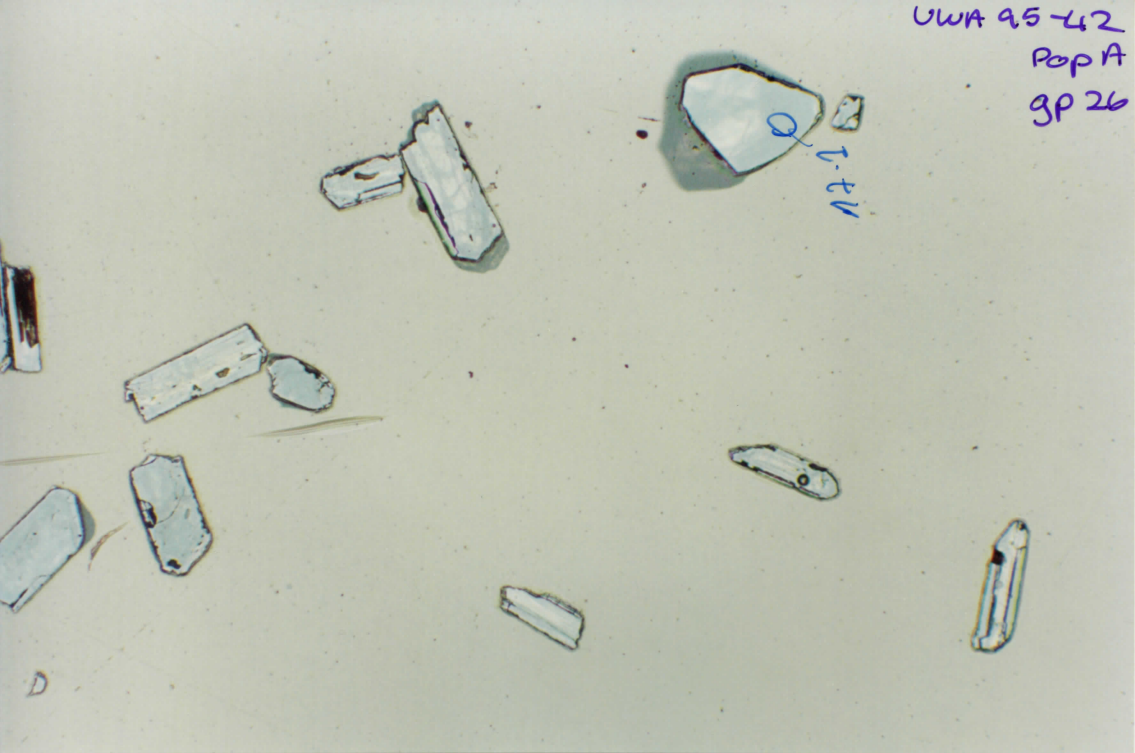
UWA 95-42
Pop A
gp 24



UWA
95-42
PopA
gp 25



UWA 95-42
Pop A
gp 26



UWA 95-42
Pop A
gp 27

