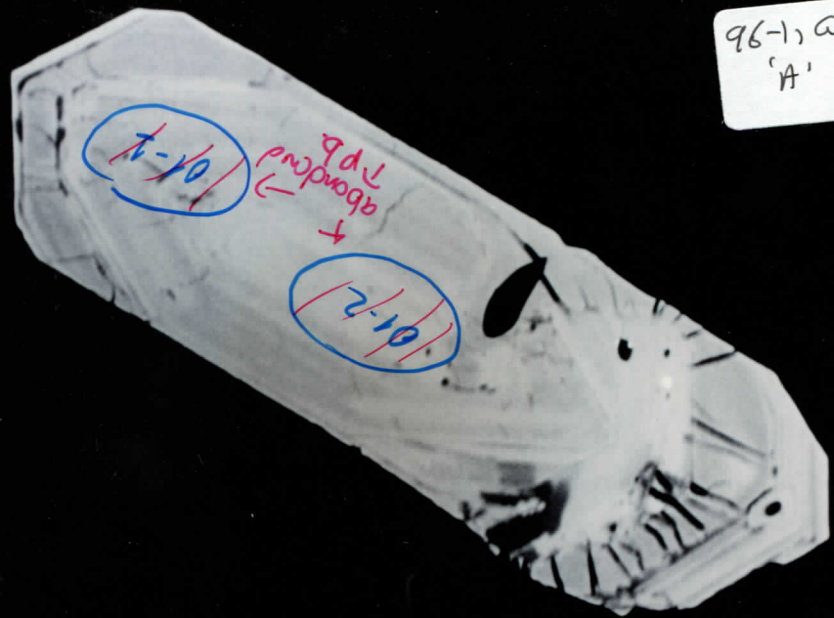
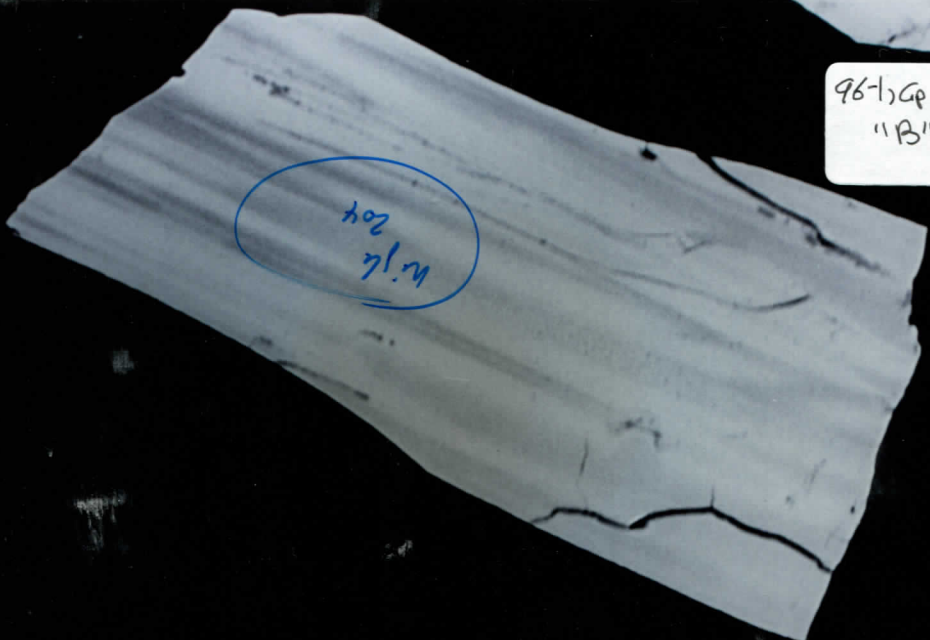


96-1, GP12
'A'



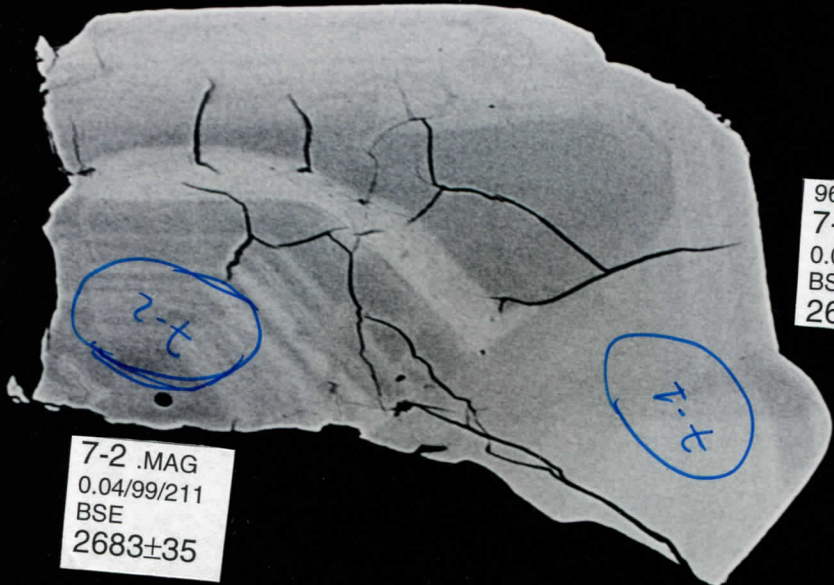
000225 12KN — X720 105m 52mm

96-1, GP12
"B"



000223 12KN — X200 105m 52mm

96-1, GP
"C" 13



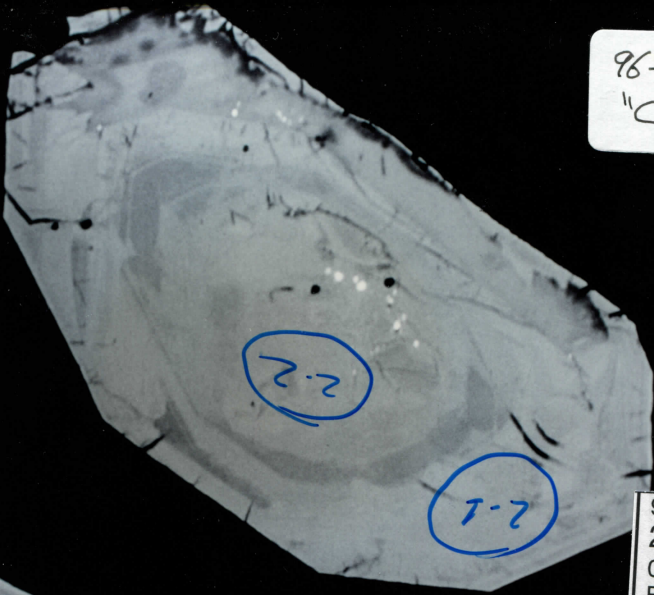
96-1B KB588:
7-1
0.08/97/186
BSE
2687±6

7-2 .MAG
0.04/99/211
BSE
2683±35

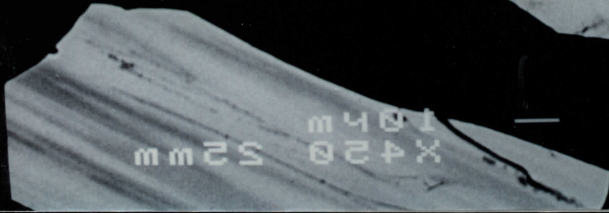
000222 12KN — X200 105m 52mm

96-1, Gp12
"C"

2-2
0.17/138/2962
BSE
2436±1

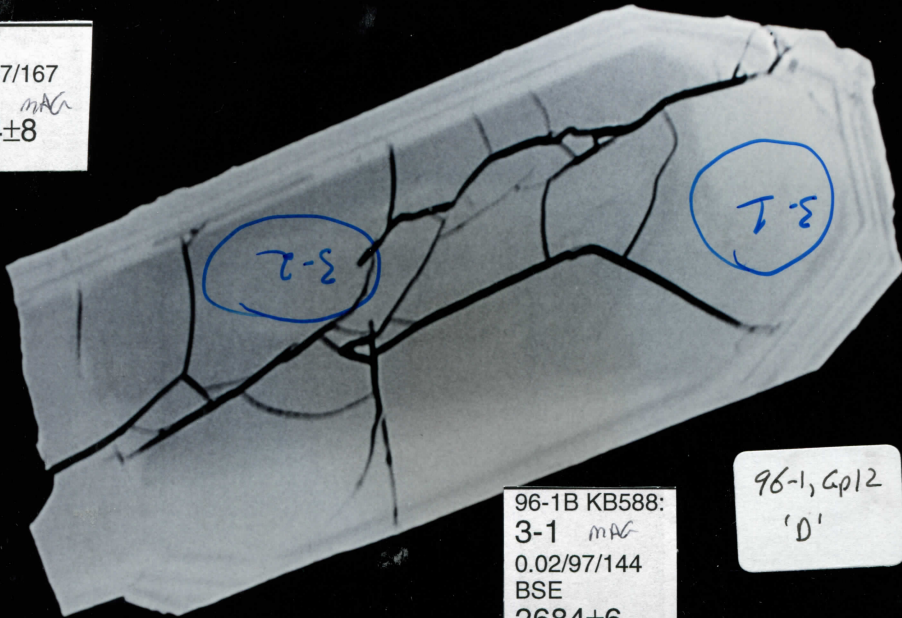


96-1B KB588:
2-1
0.15/95/667
BSE
2629±4



000224 12KN

3-2
0.81/97/167
BSE *MAC*
2674±8

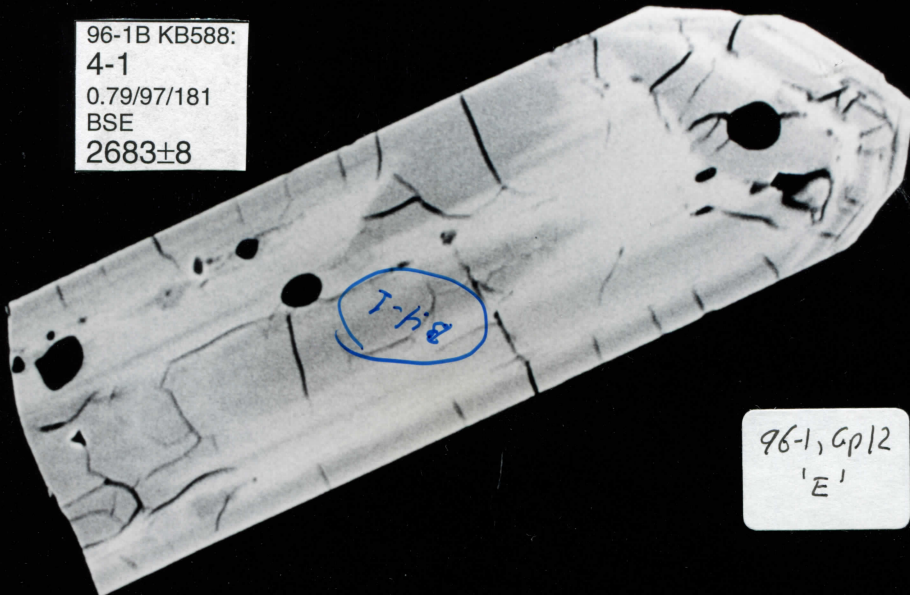


96-1, Gp12
'D'

96-1B KB588:
3-1 *MAC*
0.02/97/144
BSE
2684±6

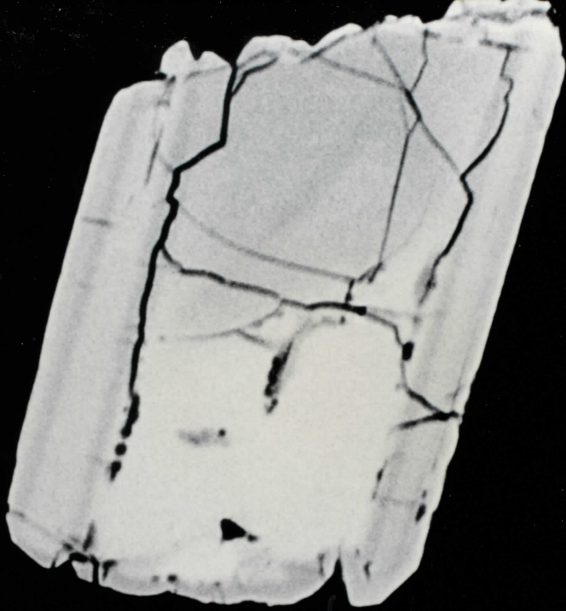
000222 12KN X220 105um 52mm

96-1B KB588:
4-1
0.79/97/181
BSE
2683±8



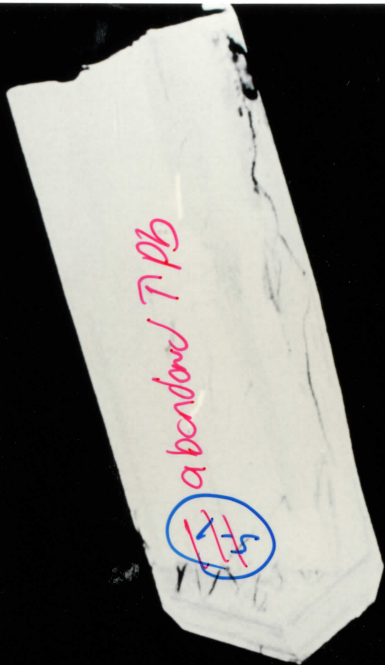
96-1, Gp12
'E'

000222 12KN X220 105um 52mm



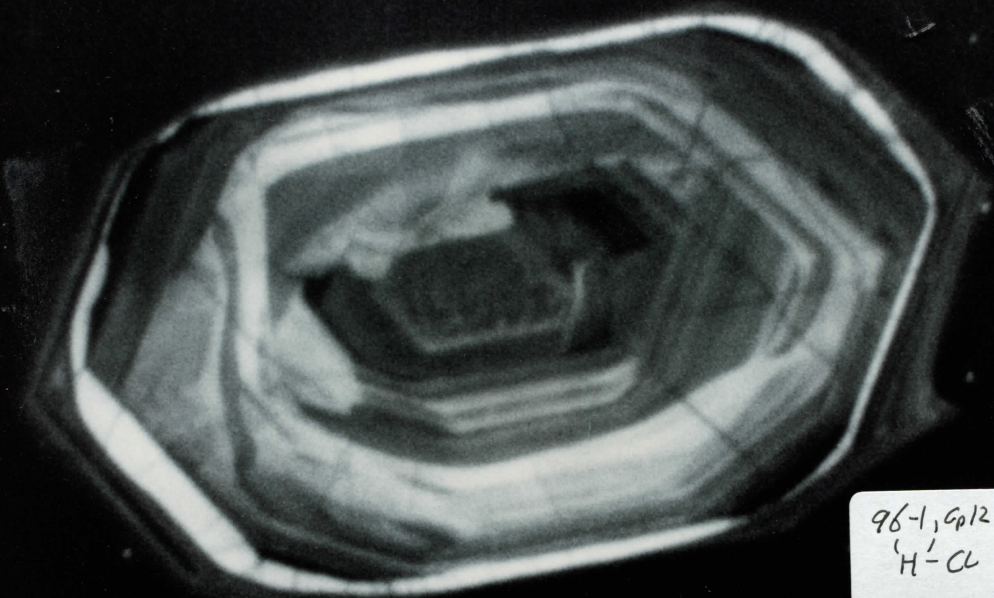
96-1, Cp12
'F'

000225 12KN — 1050 X 52mm



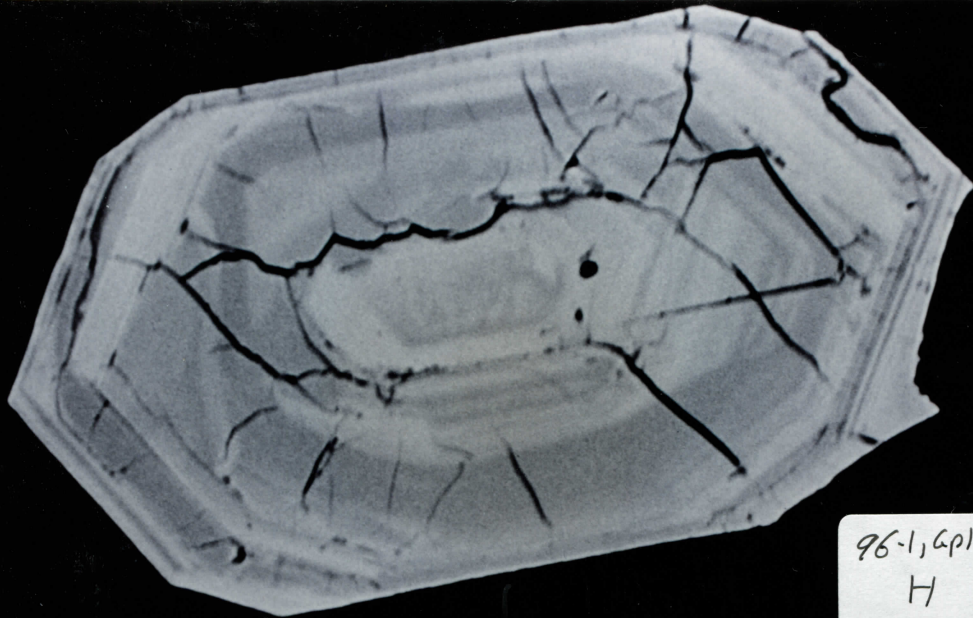
96-1, Cp12
'G''

000228 12KN — 1050 X 52mm



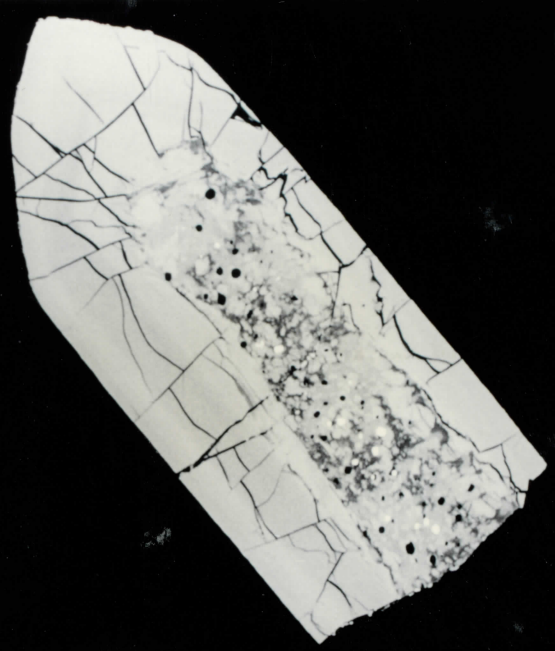
96-1, Cp12
'H'-CL

000229 12KN — 1050 X 52mm



96-1, Cp12
H

000323 12KN — X200 104m 32mm



96-1, Cp12
I

000321 12KN — 32mm



96-1, Cp12
J

96-1, 4p13
'B'



000004 12KN
10X 100µm
mm

96-1, 4p13
'D'



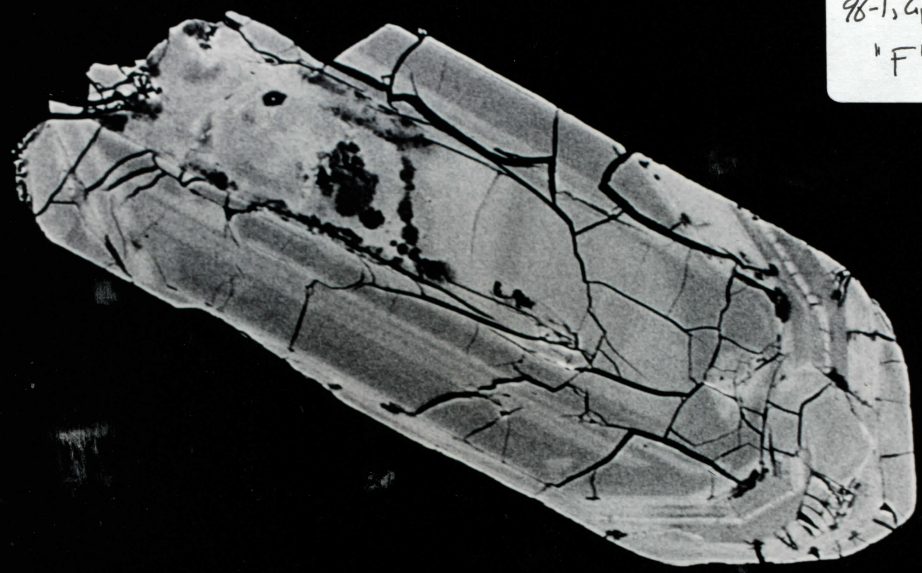
000000 12KN
10X 100µm
mm

96-1, Gp 13
'E'



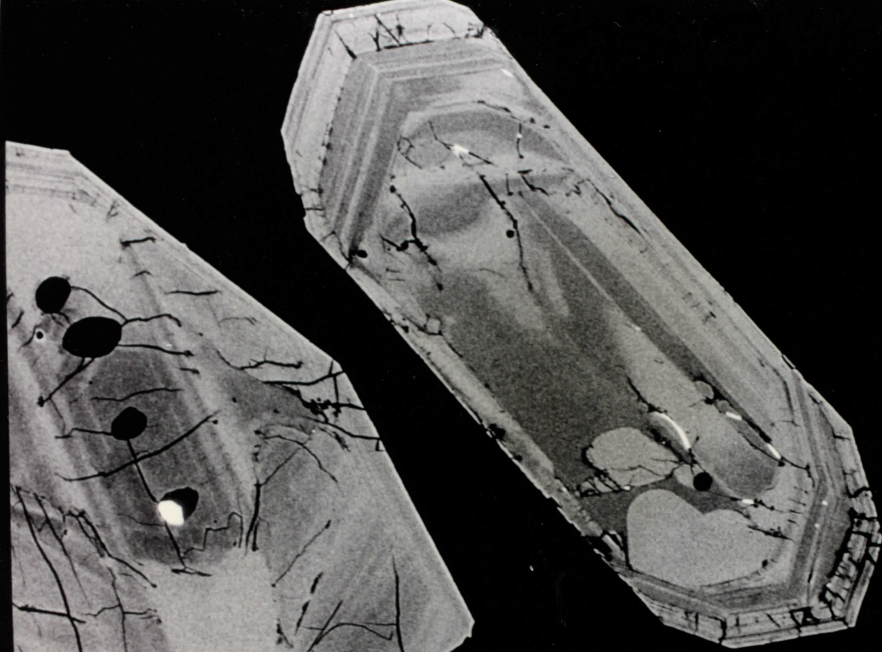
000000 12KN — 10000 X 5000 mm

96-1, Gp 13
'F'



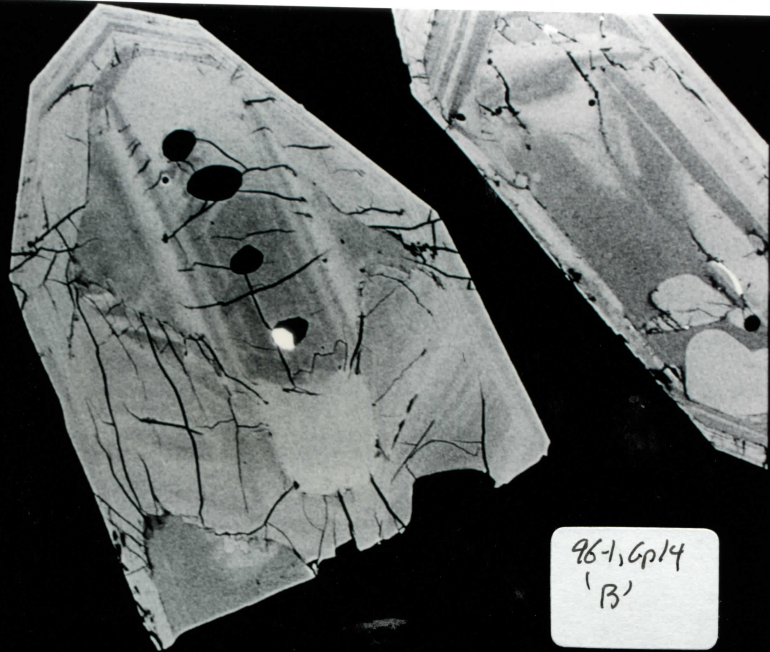
000000 12KN — 10000 X 5000 mm

96-1, Gp14
A



000353 12KN — X400 105m 52mm

96-1, Gp14
'B'



000350 12KN — X320 105m 52mm

96-1, Gp 14
'c'



00021 12KN — 1X 1050 52mm

96-1, Gp 14
'd'



00025 12KN — 1X 1040 52mm

96-1, Cp 14

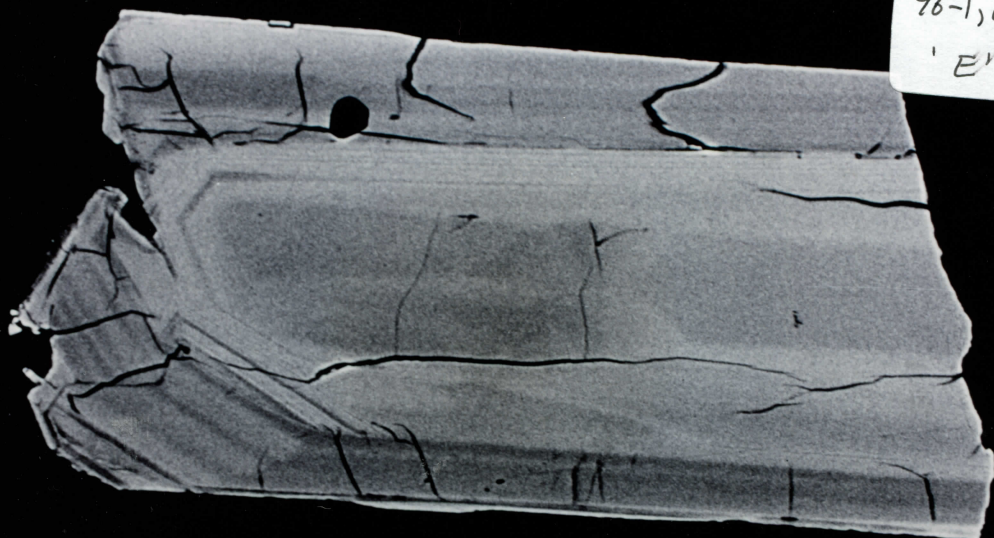
D-CL



000273 12KV — X480 104m 32mm

96-1, Cp 14

'E'



000274 12KV — X620 104m 32mm

96-1, Gp 14
'F'

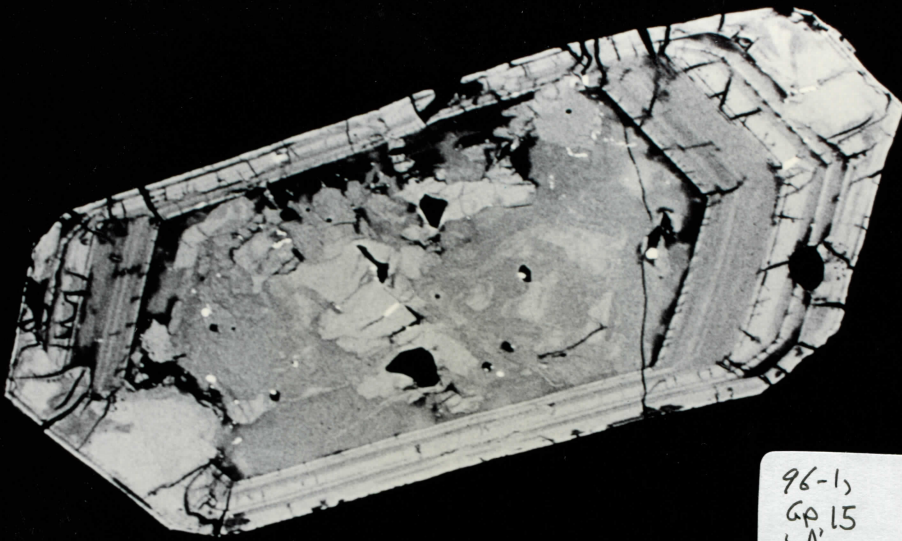


000252 12KN
100510 X 52mm

96-1, Gp 14
'G'



000252 12KN
104510 X 52mm



96-1,
Gp 15
'A'

000255 12KN — X420 105E 3mm



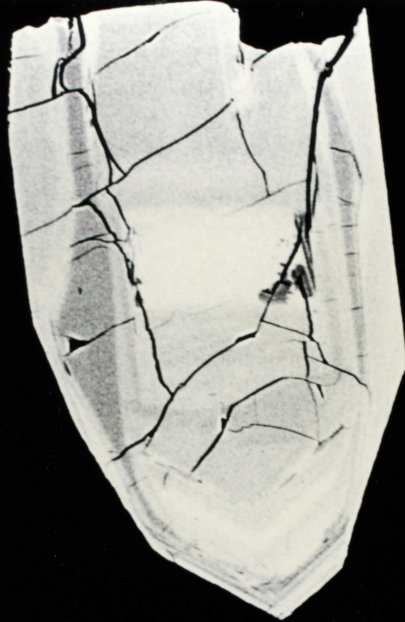
96-1,
Gp 15, B'

000258 12KN — X420 105E 3mm



96-1, Gp15
'C'

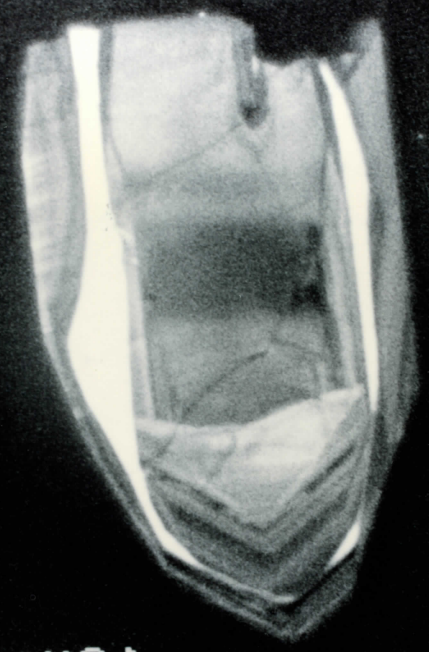
000252 12KN — X 100 500 mm



96-1, Gp15
'D'

000280 12KN — X 100 500 mm

96-1, Cp15
'D'-CL

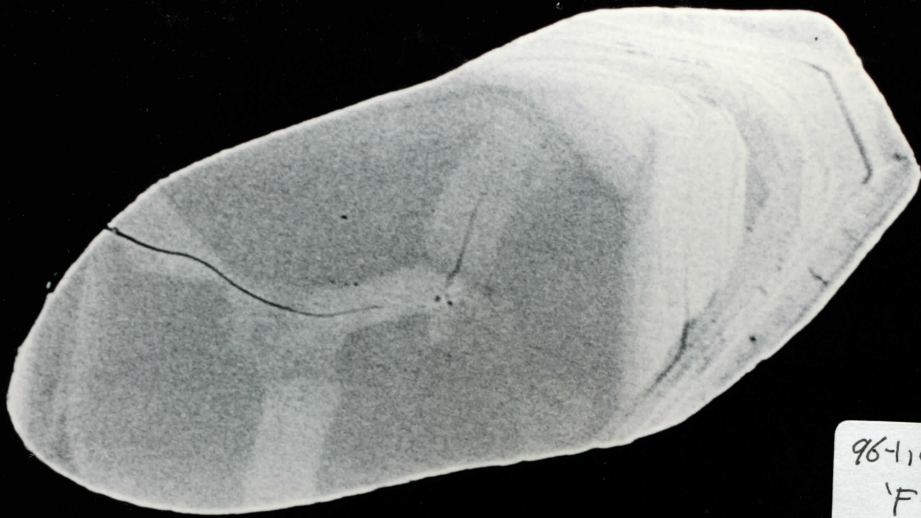


000281 12K2 10050 X 52mm

96-1, Cp15
'E' -

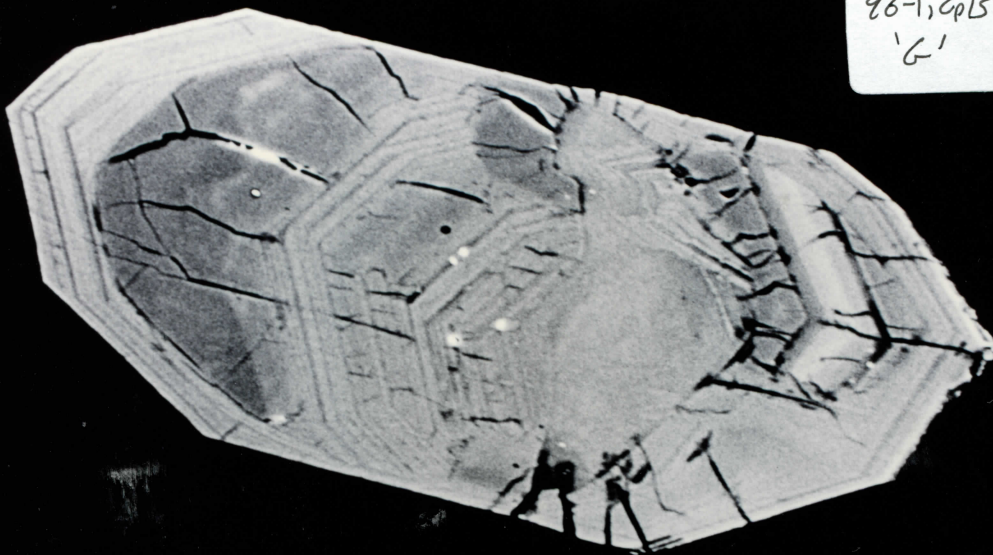


000285 12K2 10050 X 52mm



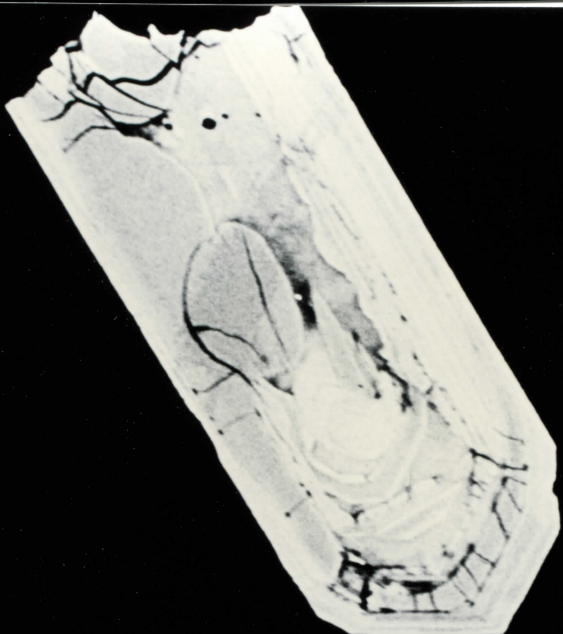
96-1, Gp 15
'F'

000083 12KN — X 1000 500 52mm



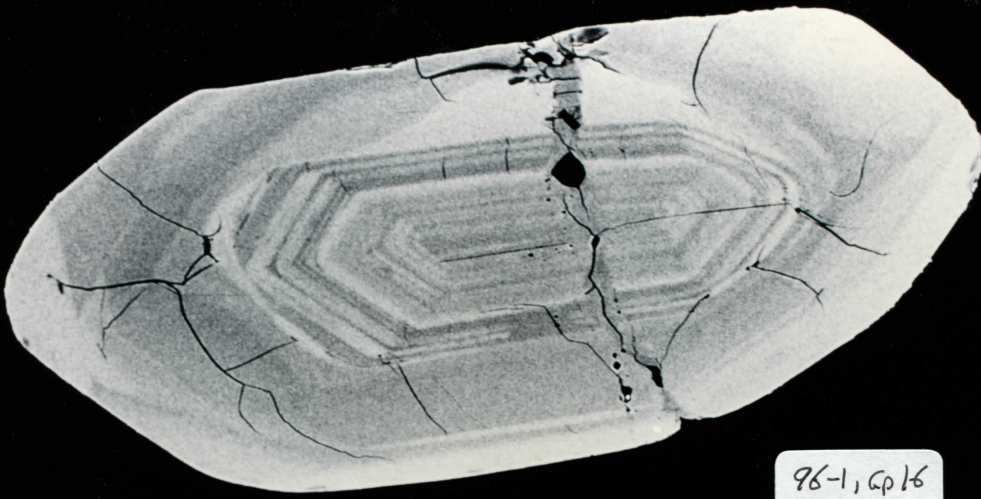
96-1, Gp 15
'G'

000084 12KN — X 1000 500 52mm



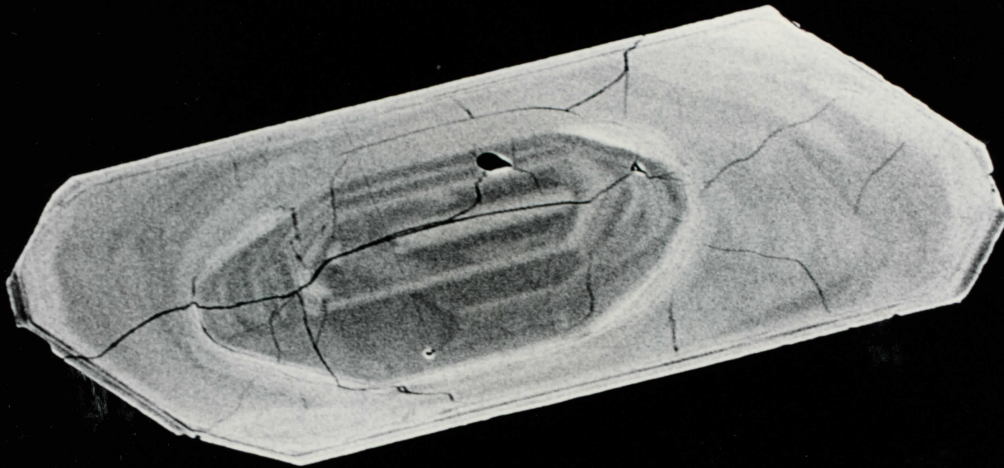
96-1, Gp 15
'H'

000085 12KN — X 1000 500 52mm



96-1, Cp 16
'A'

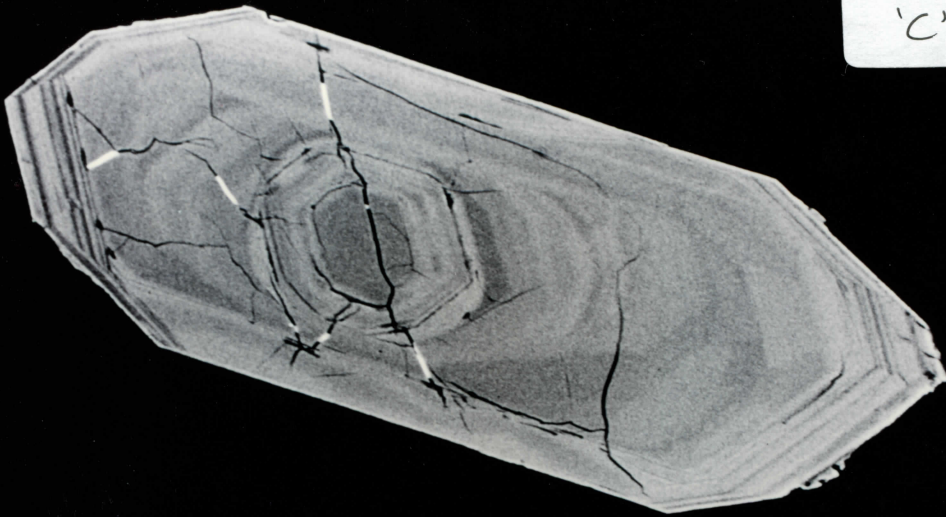
000388 12KV — 10320 X 52mm



96-1, Cp 16
'B'

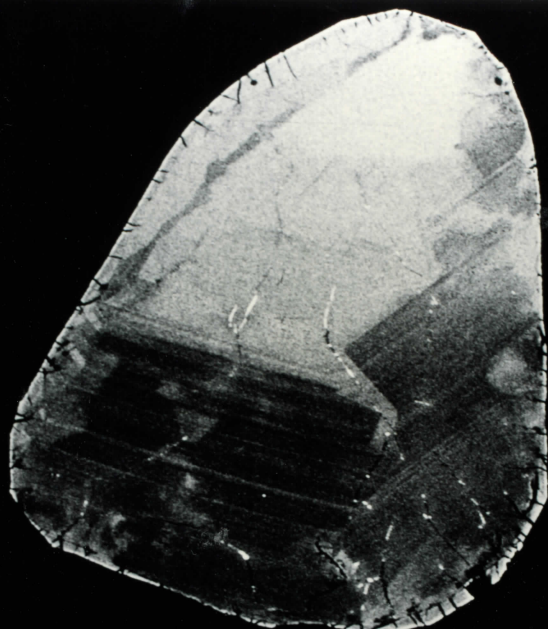
000387 12KV — 10500 X 52mm

96-1, cp 16
'C'



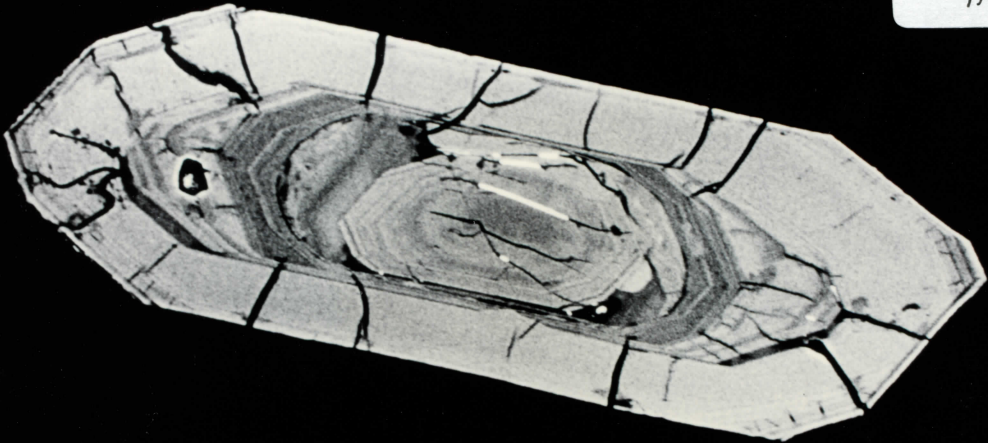
000888 12KV X220 105m 52mm

96-1, cp 16
'D'



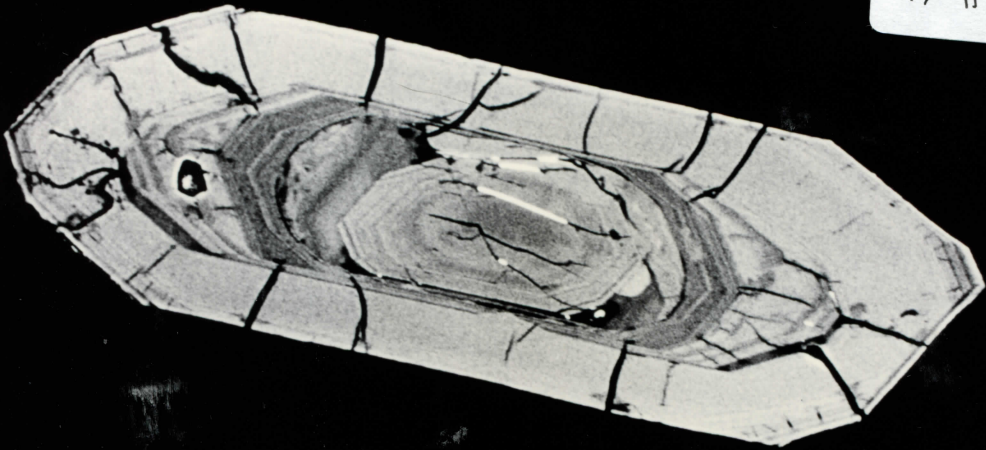
000888 12KV X220 105m 52mm

96-1, Cap 17
'A'

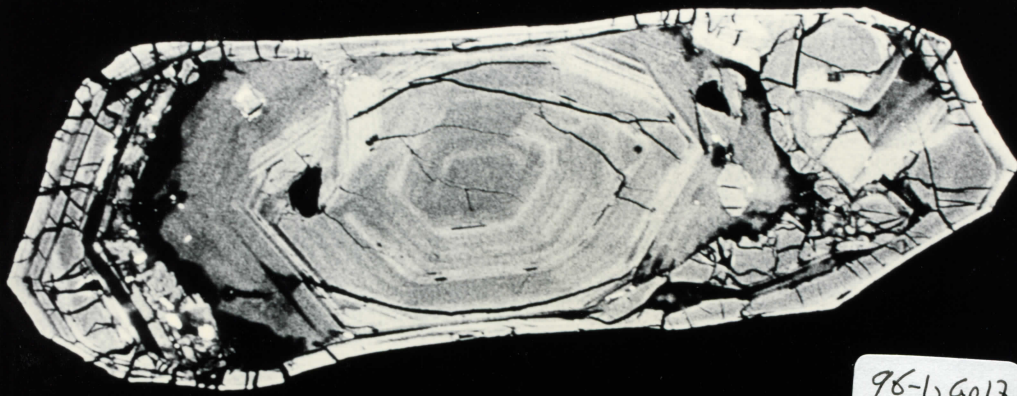


000000 12KN — X 100 500 32mm

96-1, Cap
17-'A'

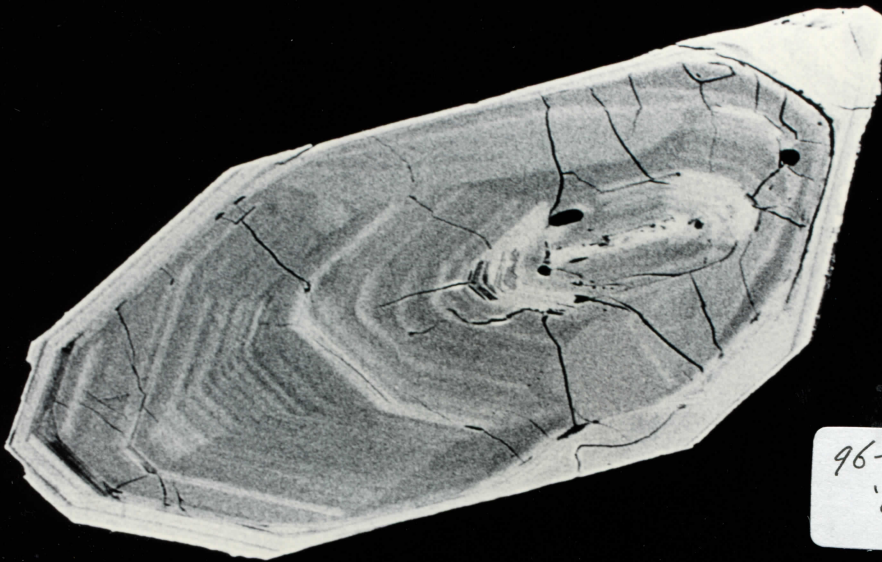


000000 12KN — X 100 500 32mm



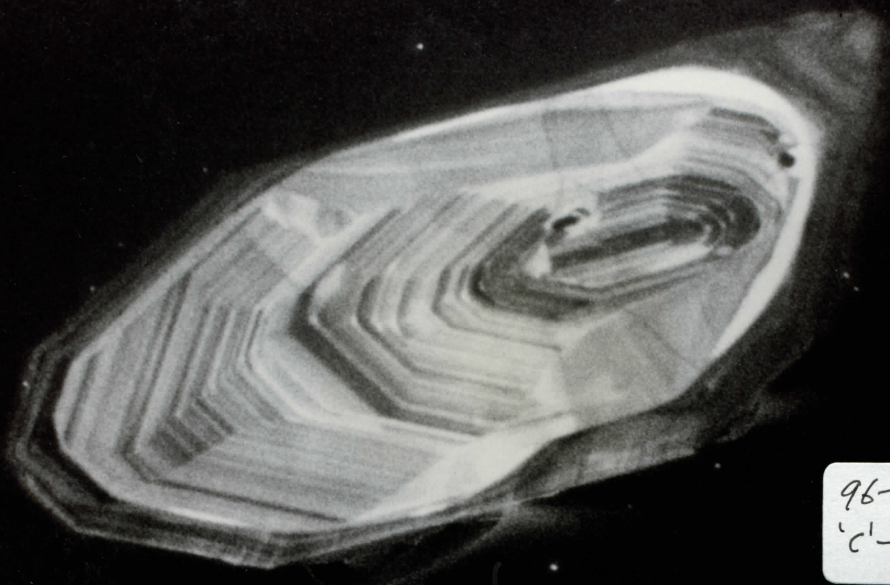
96-1, Gp 17
'B'

000001 12KN — X 100 500 32mm



96-1, Gp 17
'C'

000005 12KN — X 100 500 32mm



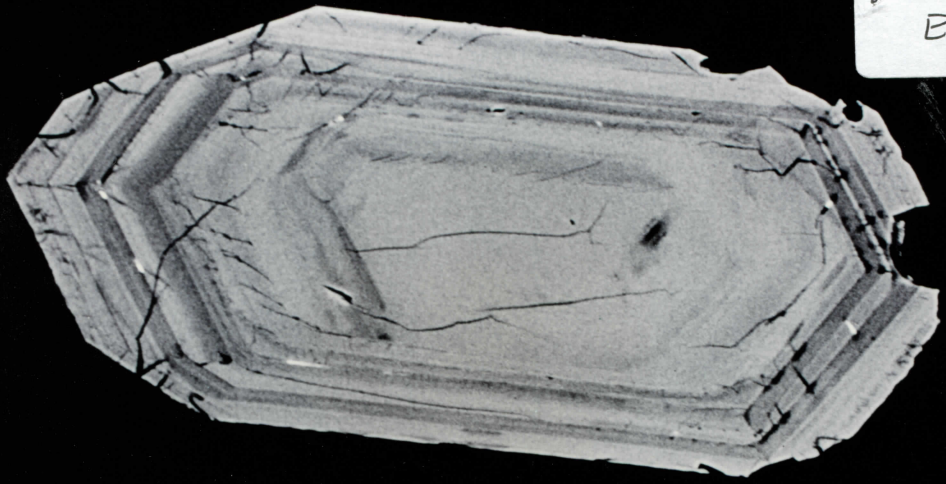
96-1, Gp 17
'c'-CL

000000 12KN 10000 X 0.5mm



96-1, Gp 17
'd'

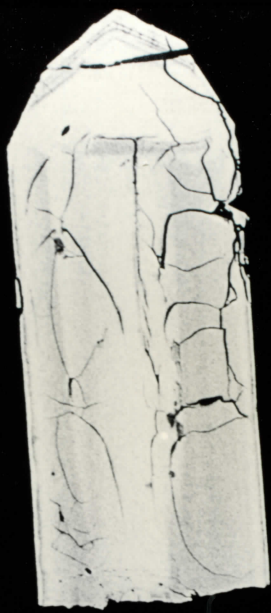
000004 12KN 10000 X 0.5mm



96-1, Gp 17
E

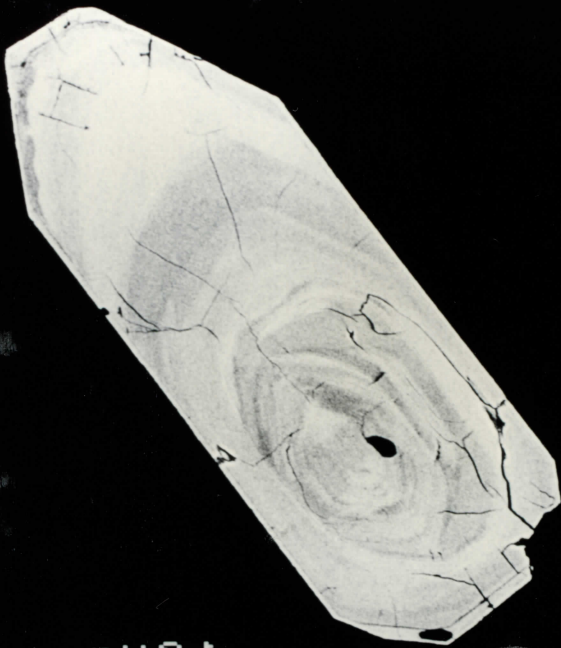
000000 12KN 10000 X 0.5mm

96-13 GP 18
'A'



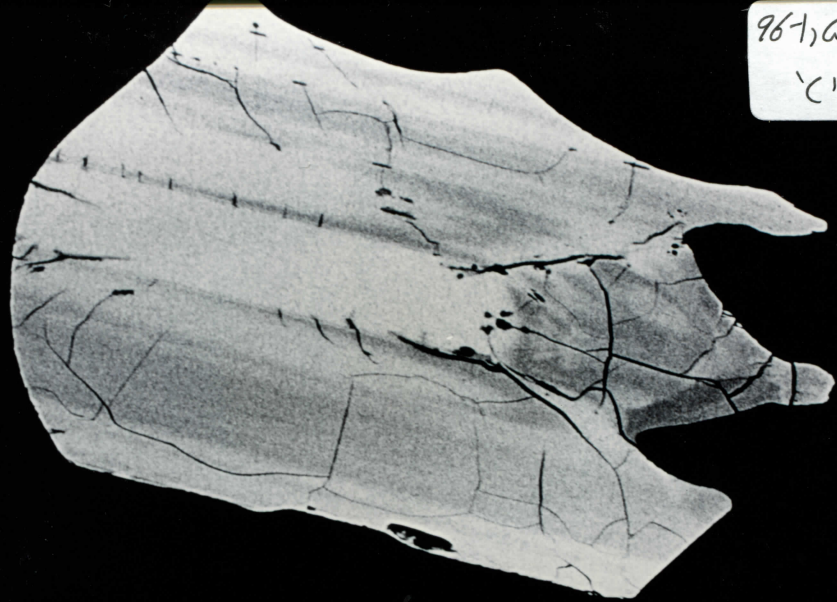
000000 12KN
100250 X 50
mm 52mm

96-13 GP 18
'B'



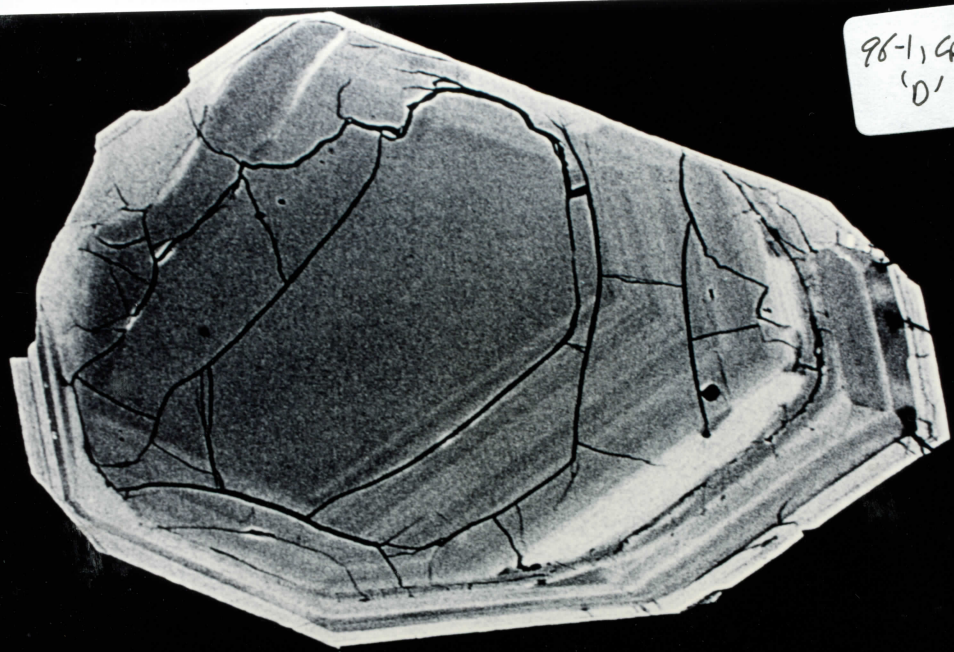
000000 12KN
10400 X 50
mm 52mm

96-1, Cp18
'C'



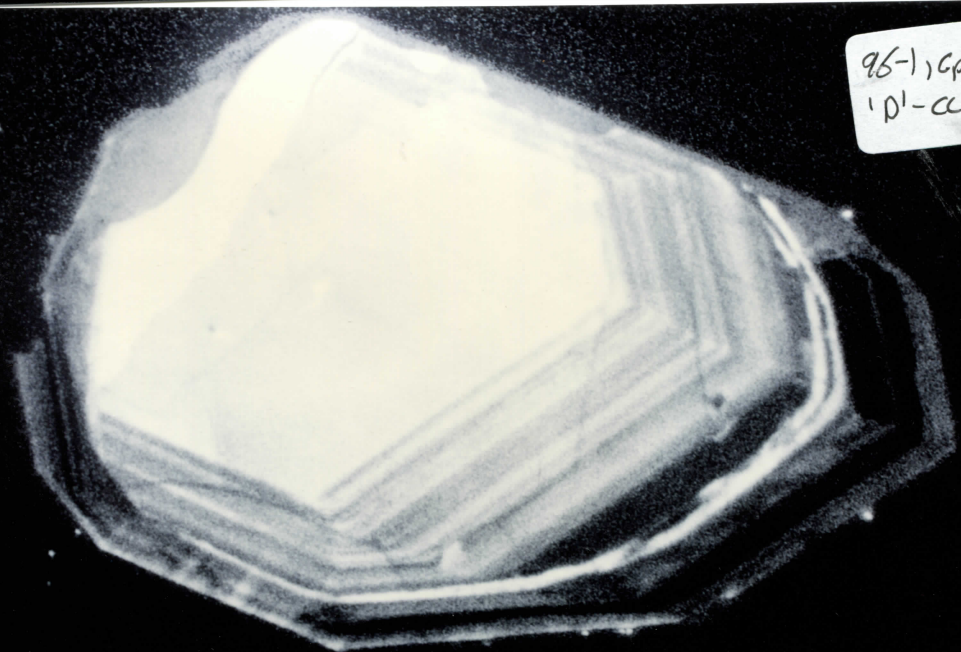
000000 12KN — 1000 505m 32mm

96-1, Cp18
'D'



000000 12KN — 1000 505m 32mm

96-1, Cp18
'D'-a.



001000 12KN — 1000 505m 32mm