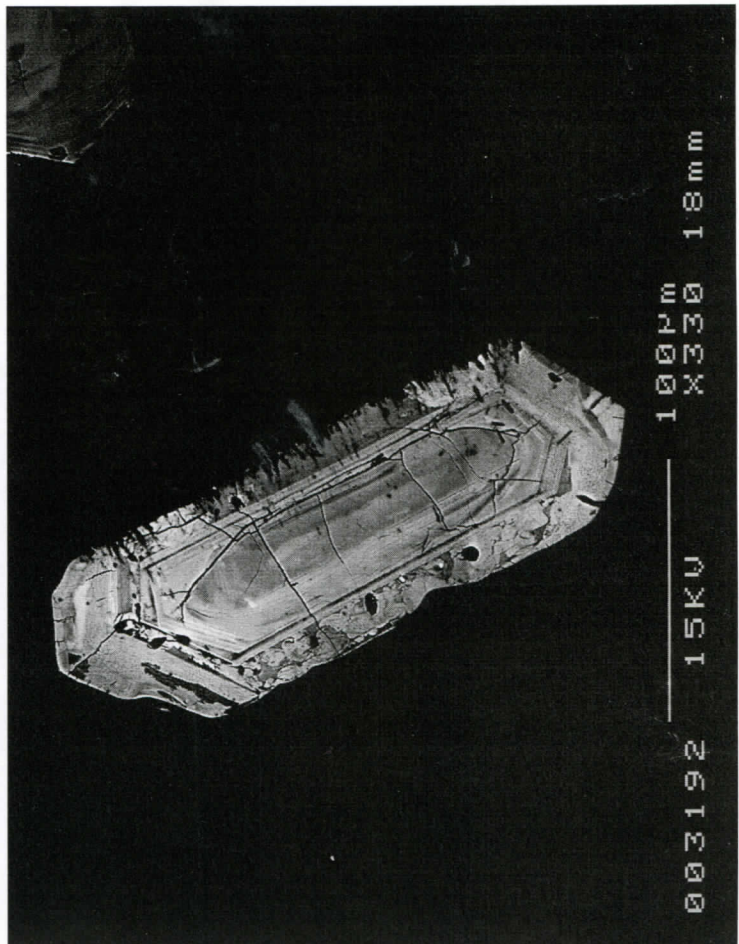
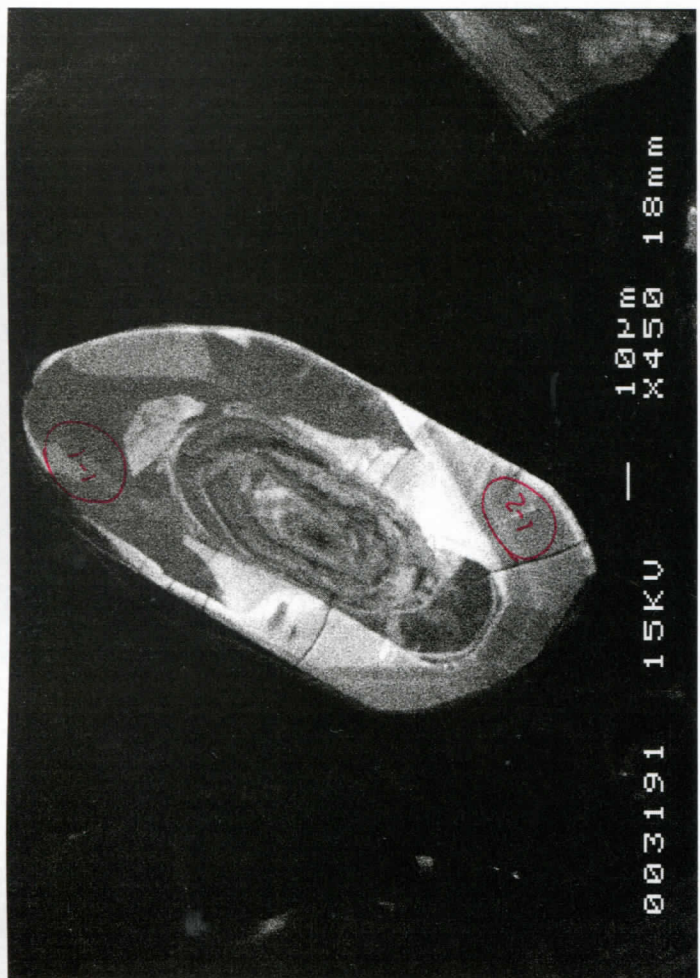
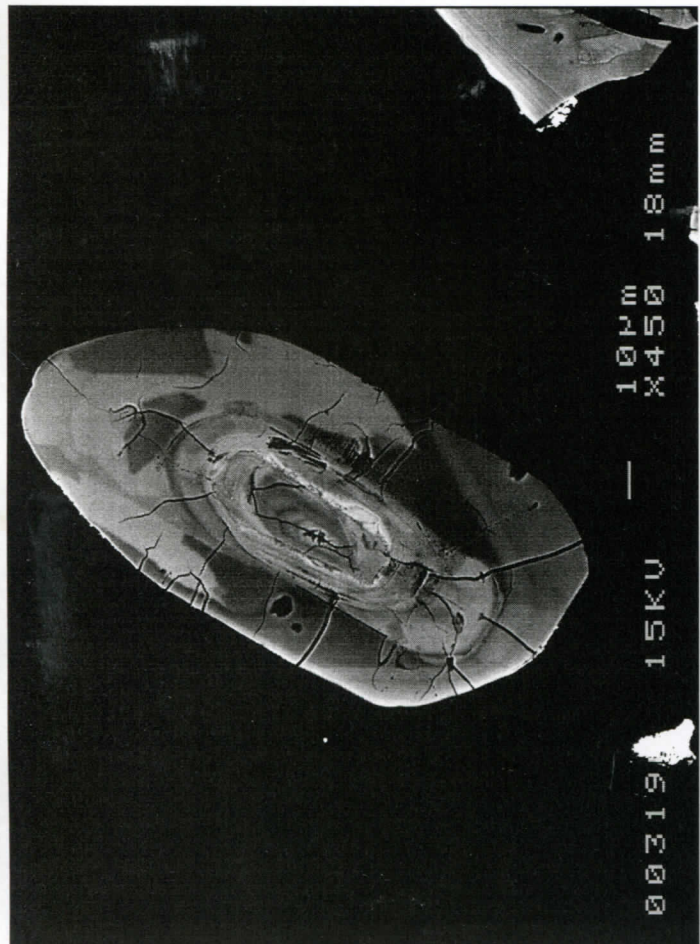
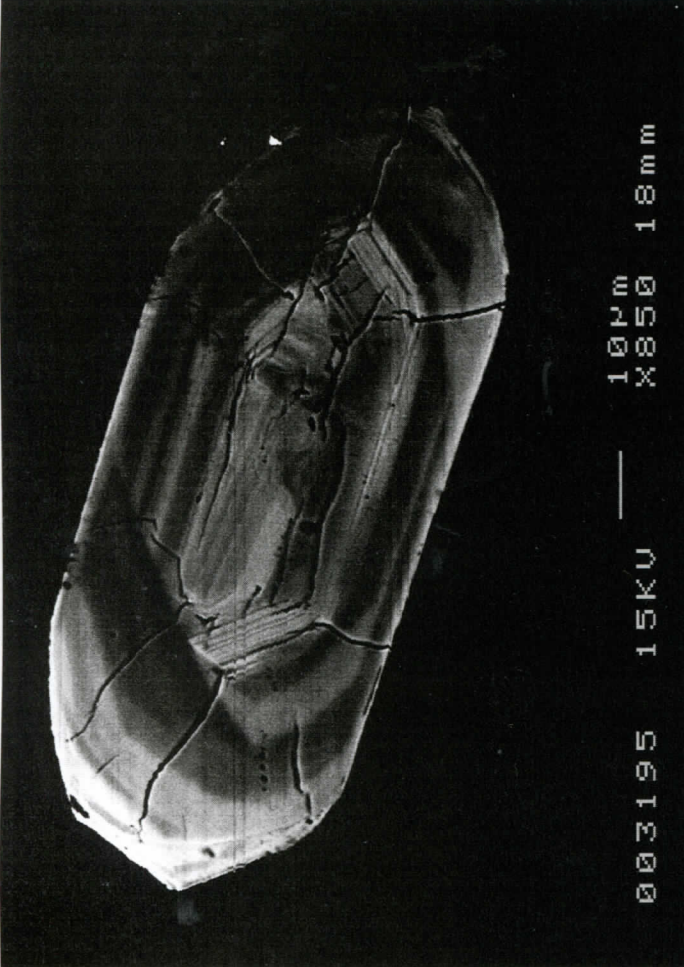


VEU44.391  
gr. 1  
b.s. + c.l.  
1-1 = 2922  
1-2 = 2800



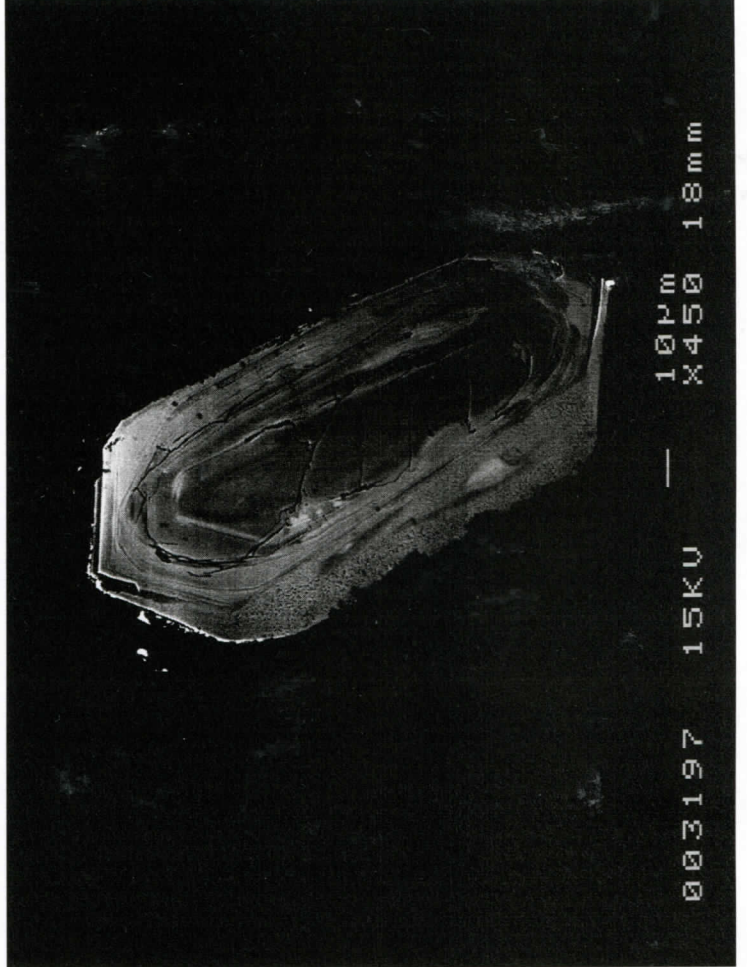
gr. 2  
b.s. + d.

00004301  
gr. 6  
c.l. + b.s.  
344 5 ± 5

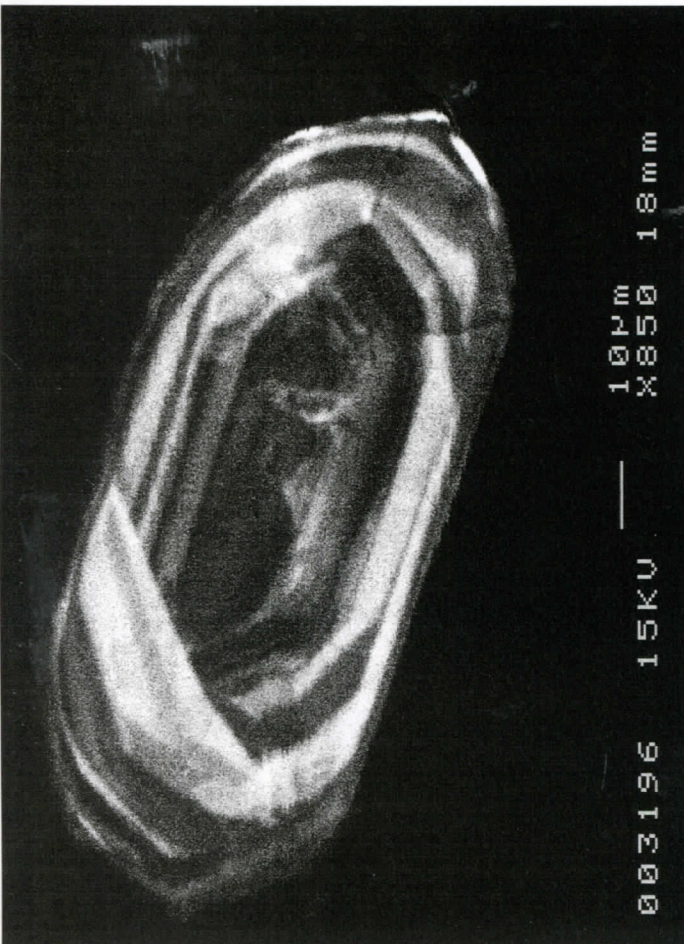


003195 15KV — 10µm X850 18mm

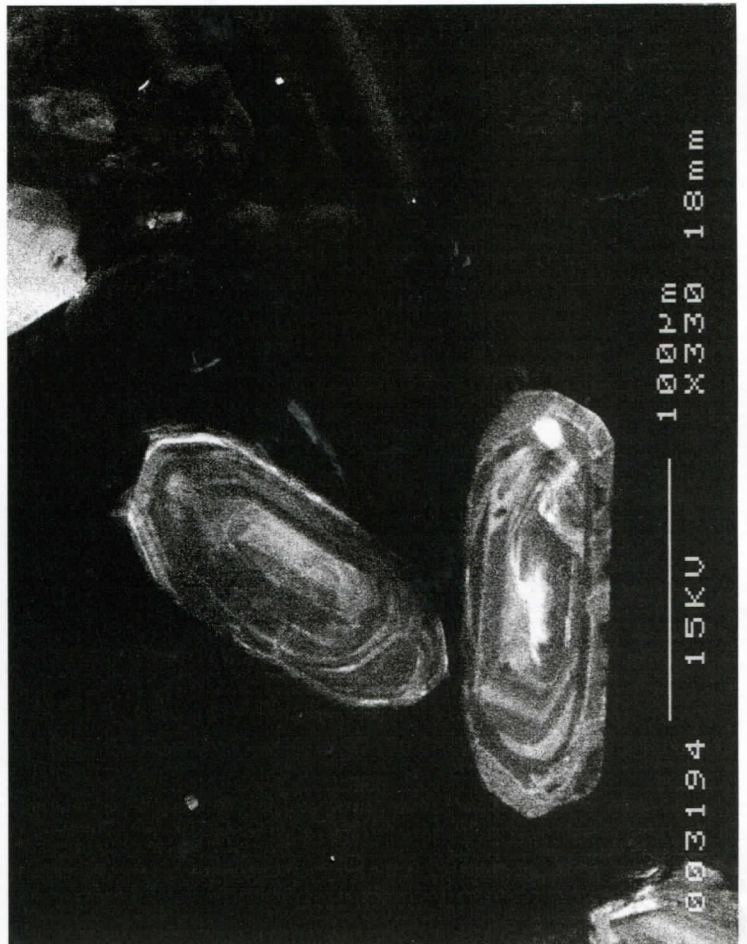
gr. 3 / gr. 5



003197 15KV — 10µm X450 18mm



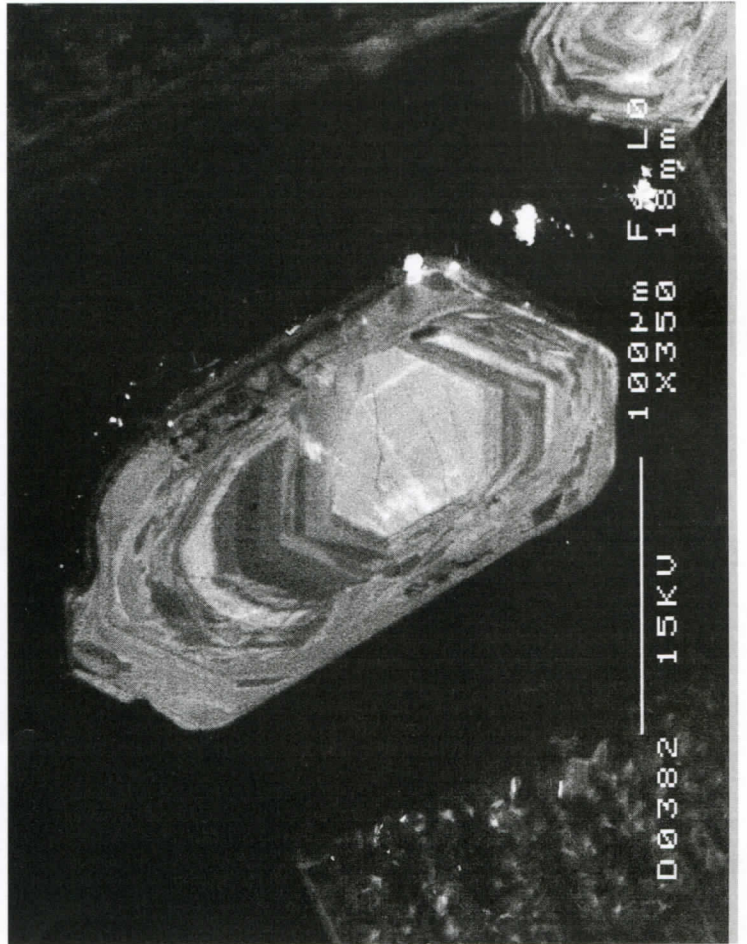
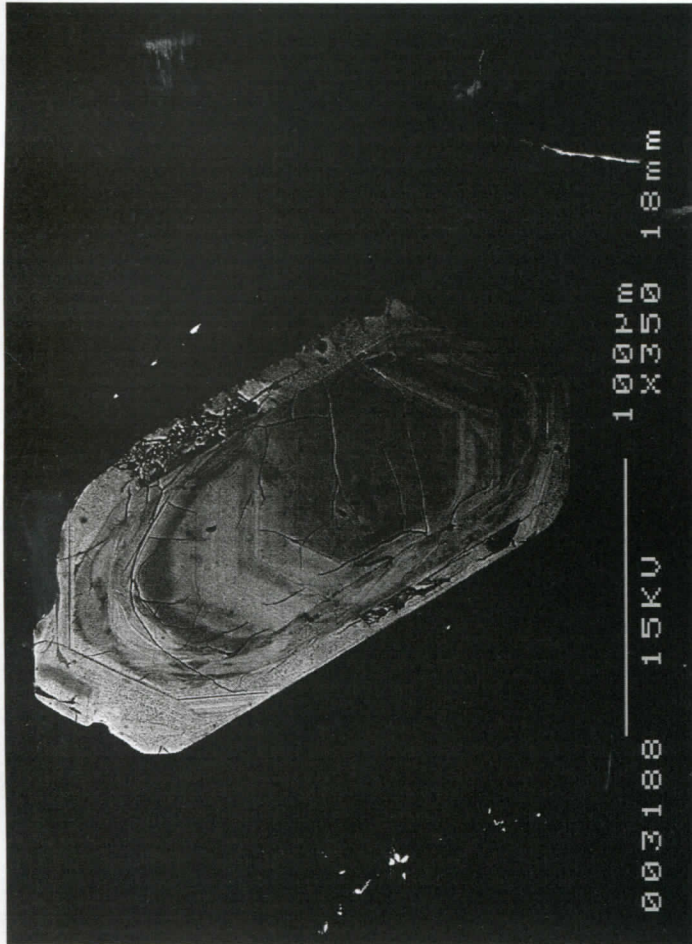
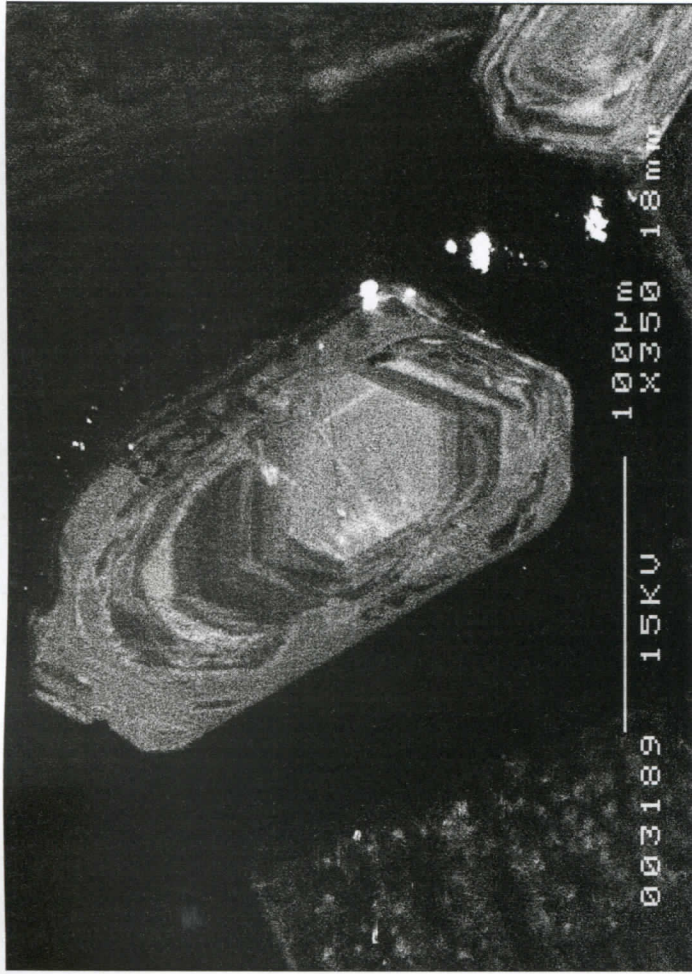
003196 15KV — 10µm X850 18mm



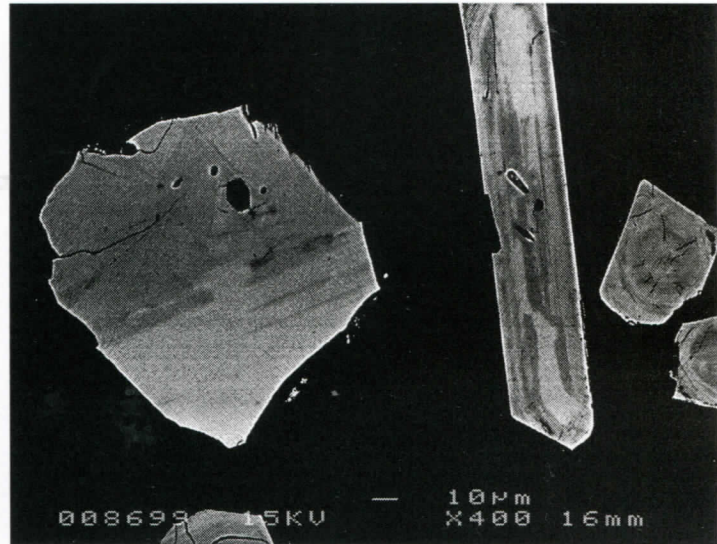
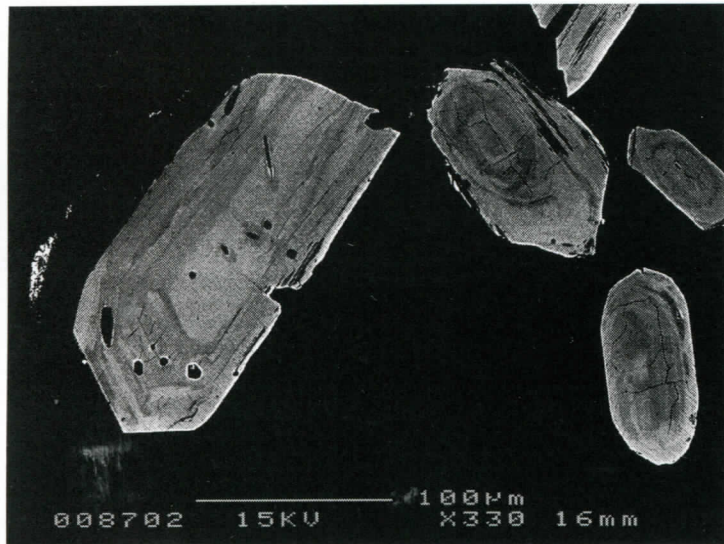
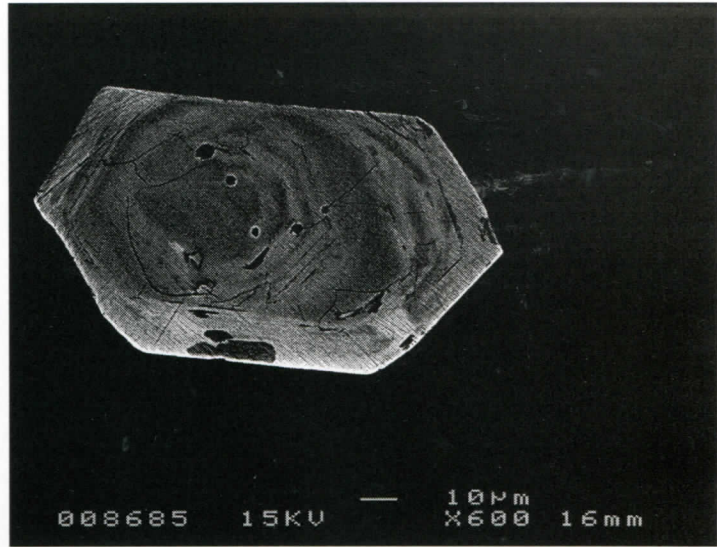
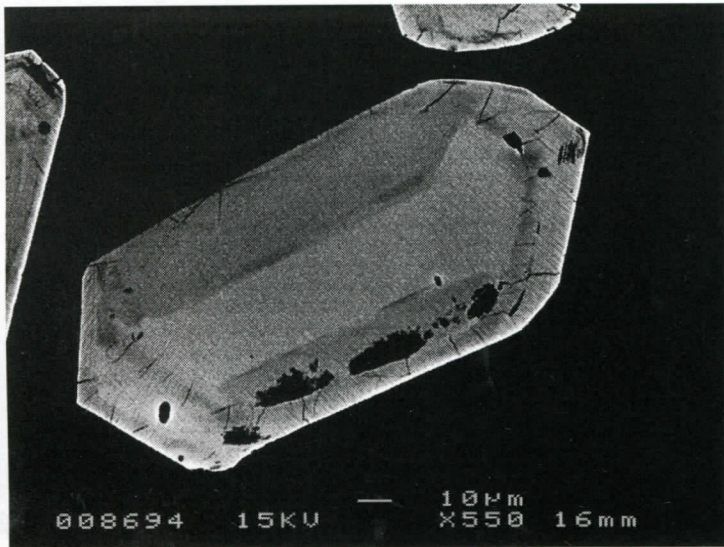
003194 15KV — 10µm X330 18mm

V00094-301  
gr. 7  
mem 01 - mem 05.tif

gr. 7  
mem 05.tif



V00094-301  
gr. 7.



gr. 4 = 3242±3

gr. 9 lower right = 3436

gr. 67 needle = 2914±5

194-301

4, 8

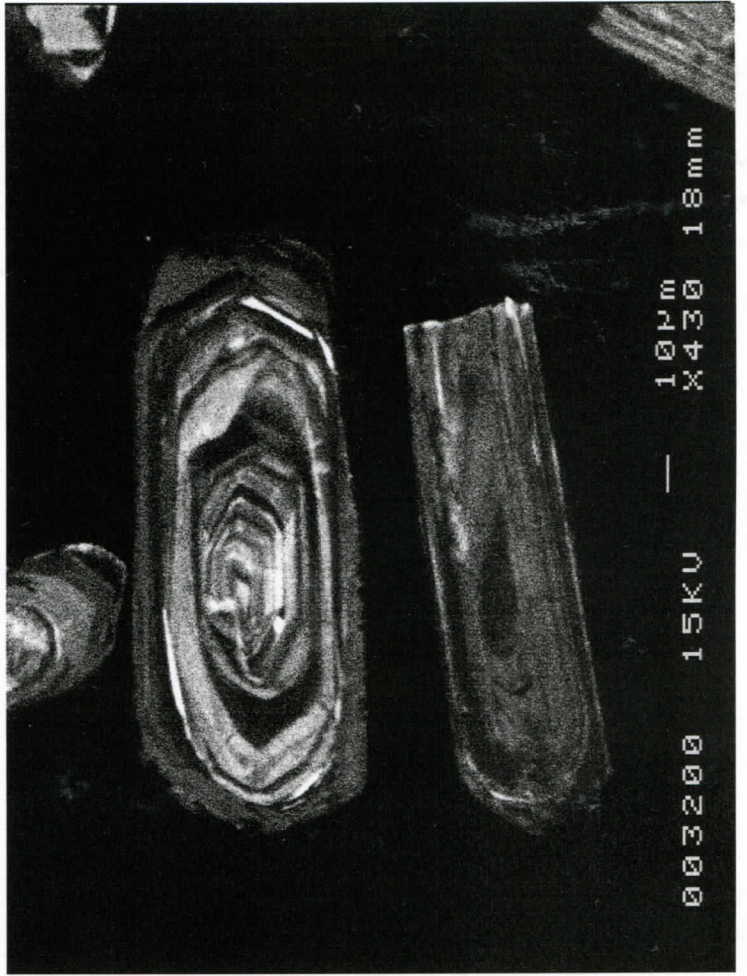
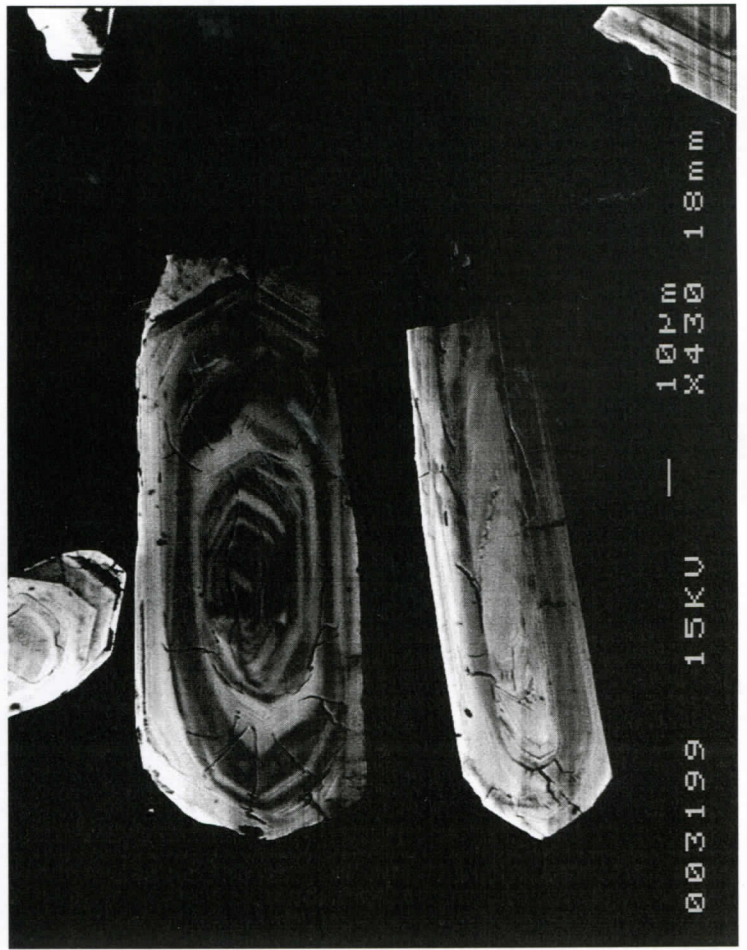
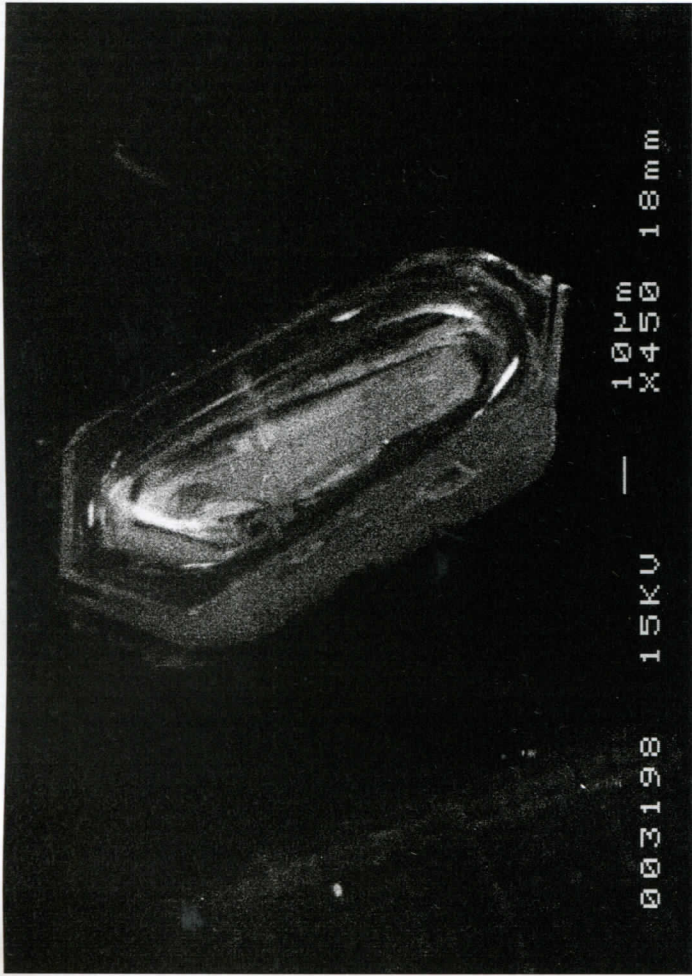
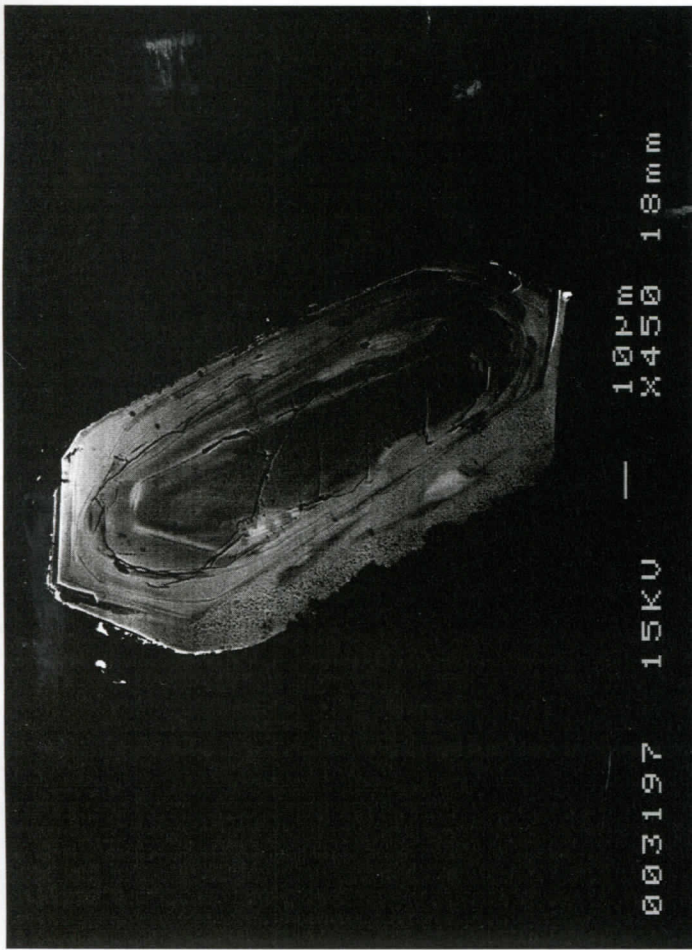
9, 67

U000074-301

gr. 65

b.s.+c.l.

104. hb w



gr. 11

b.s.+c.l.

con. = 3461±9

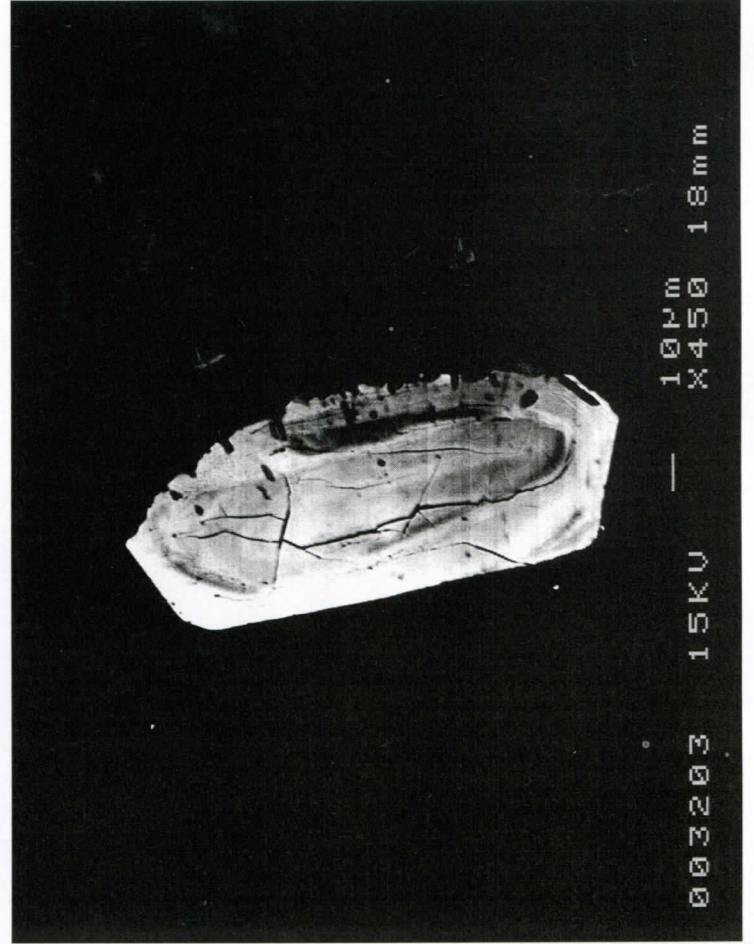
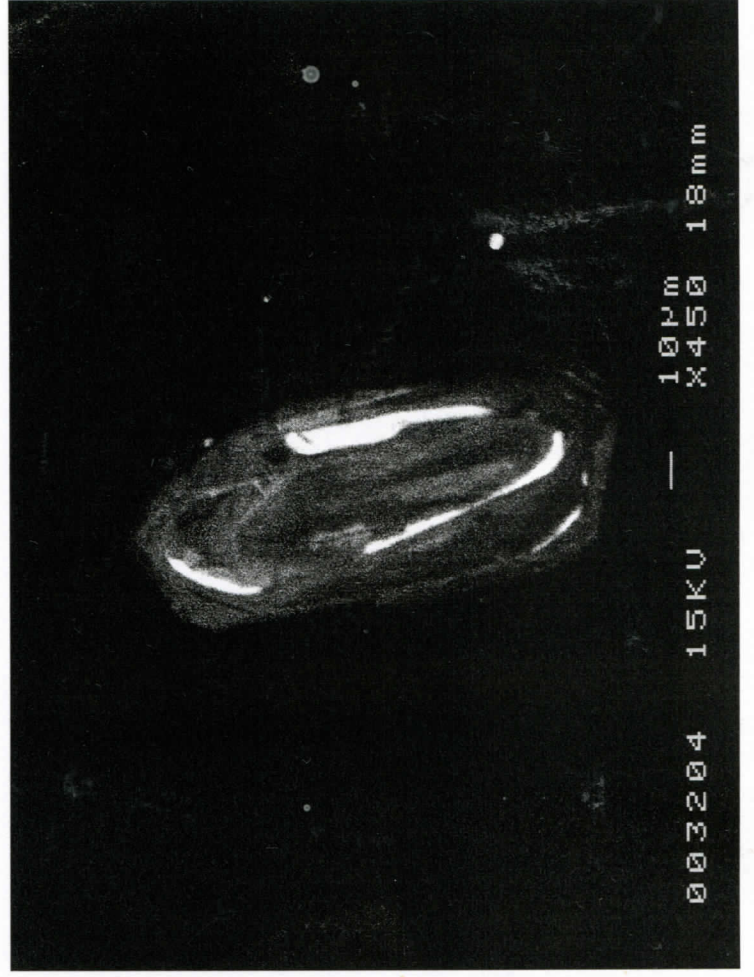
3368±3

Vonck 14-301

gr. 12

b.s. + c.l.

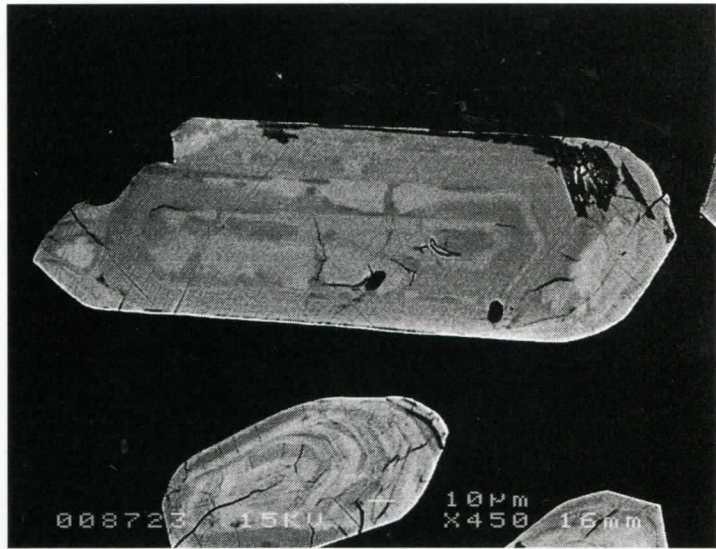
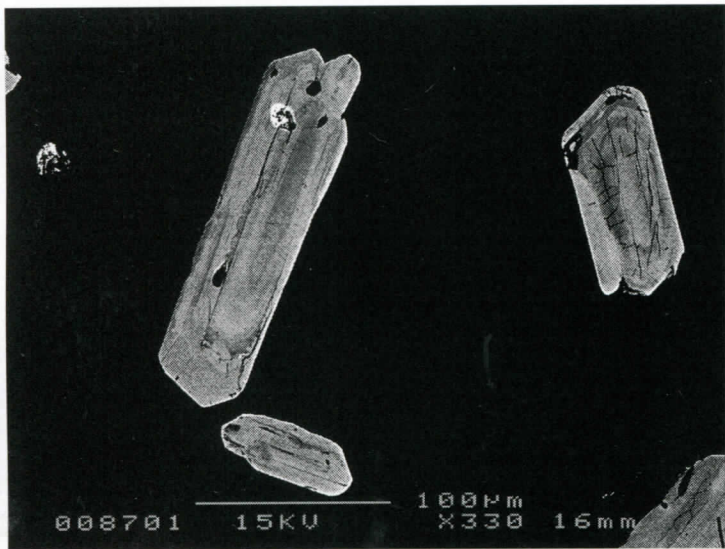
long = 3376 ± 9



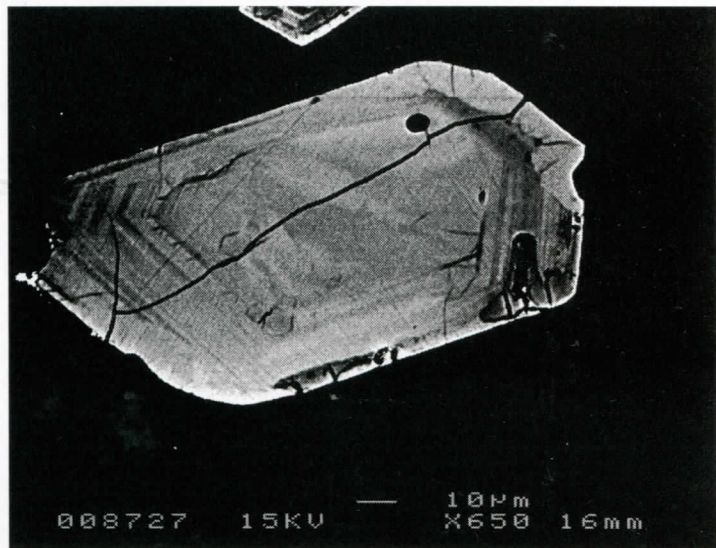
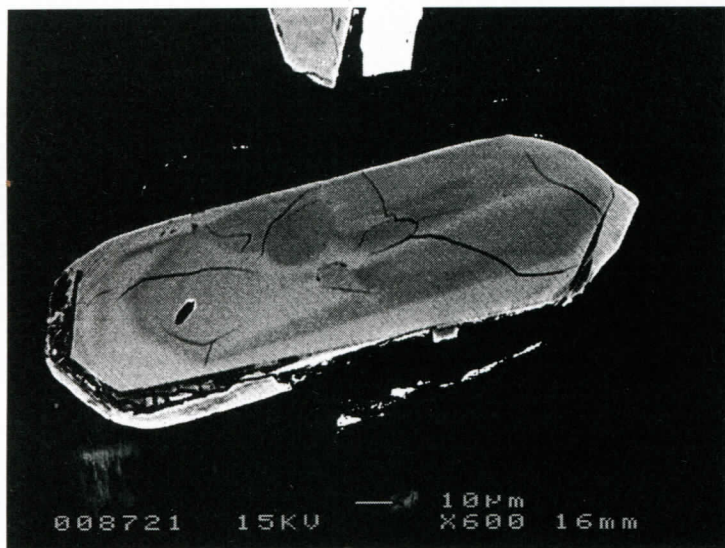
gr. 14

b.s. + c.l.

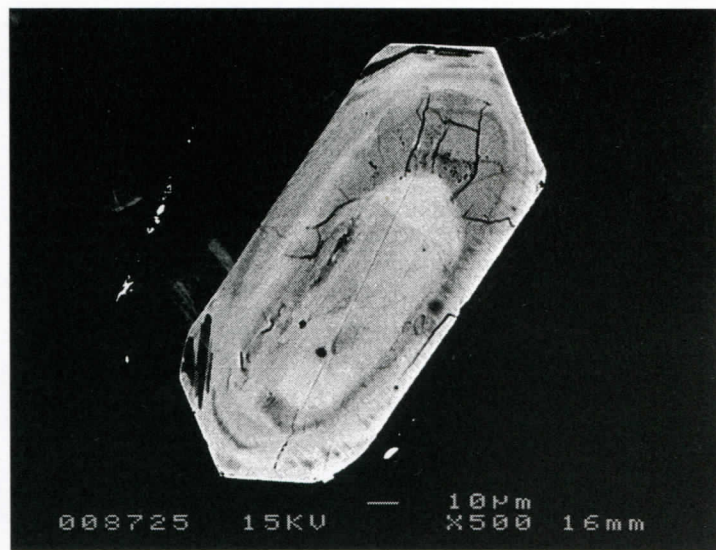
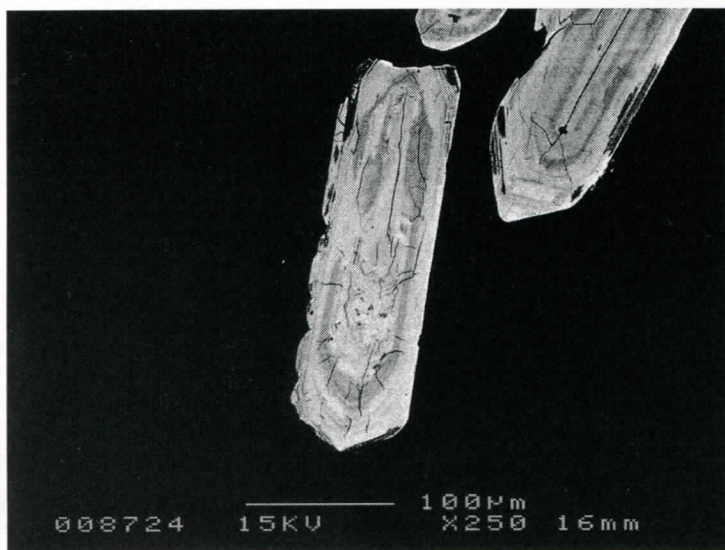
10+13



15+16



17+18

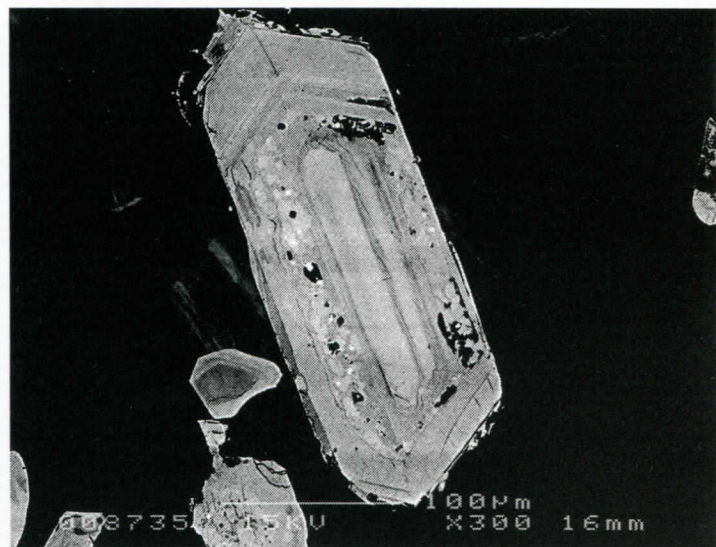
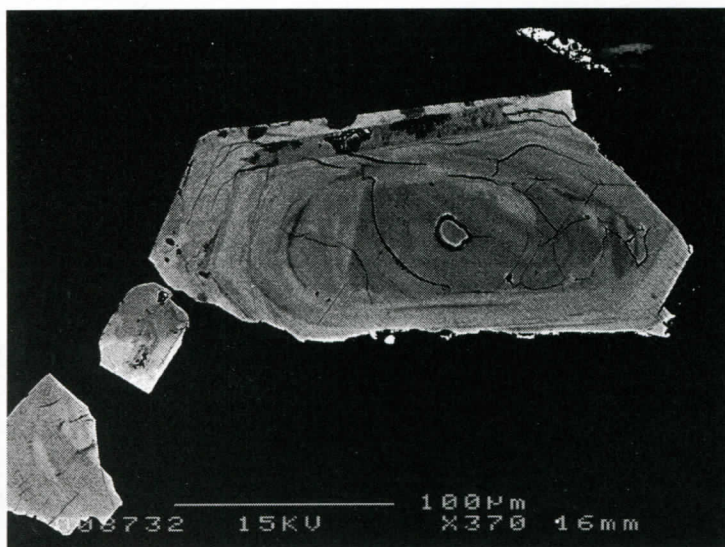
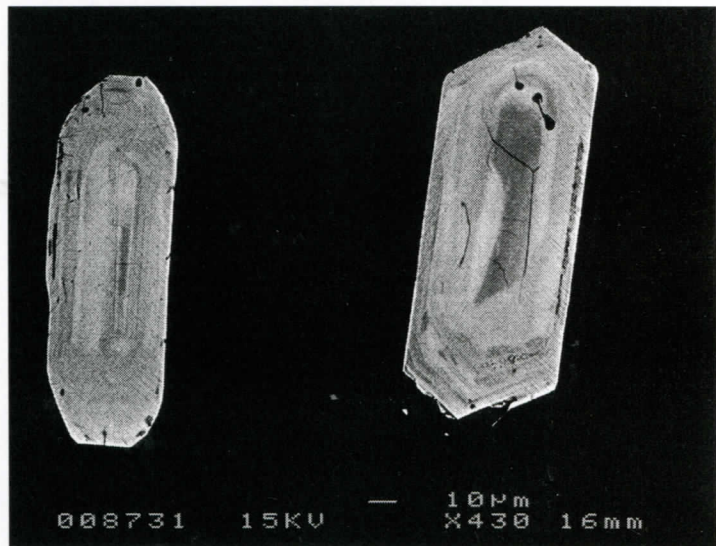
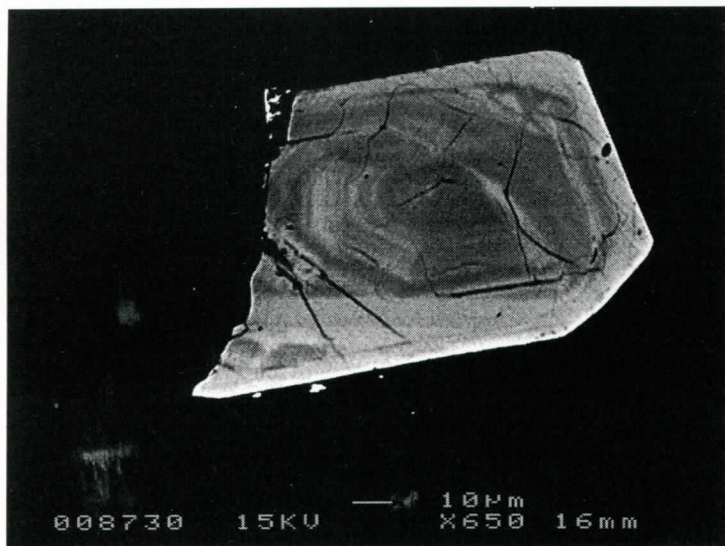
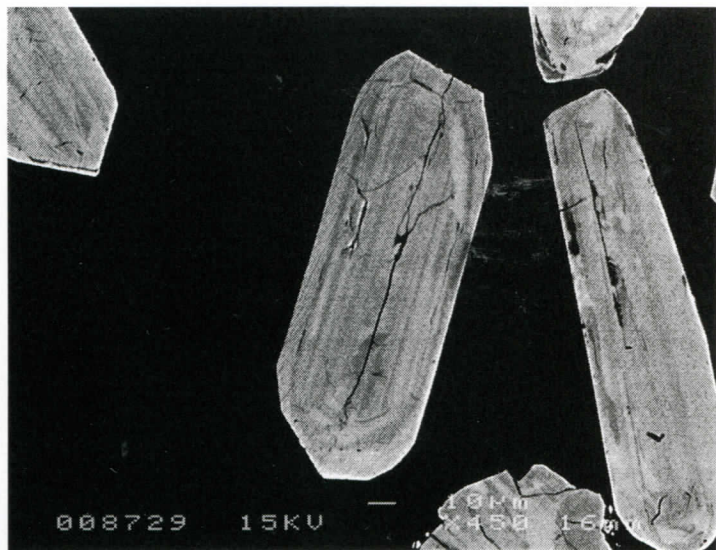
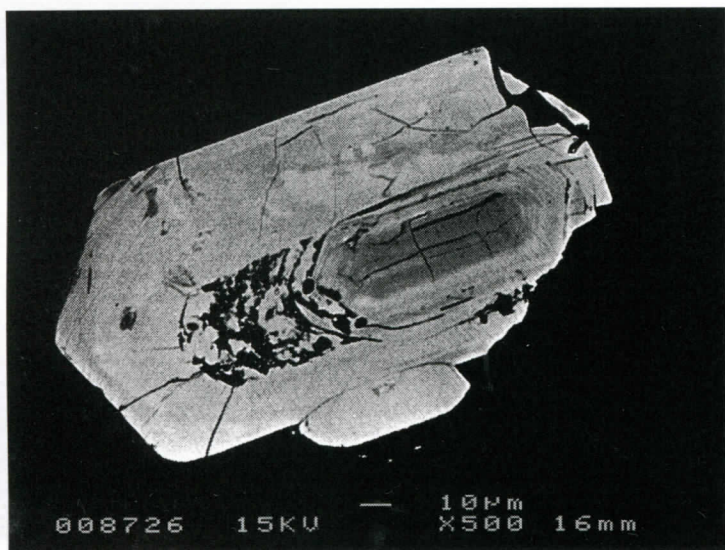


MA4-301

gr. 10 = 2589±3

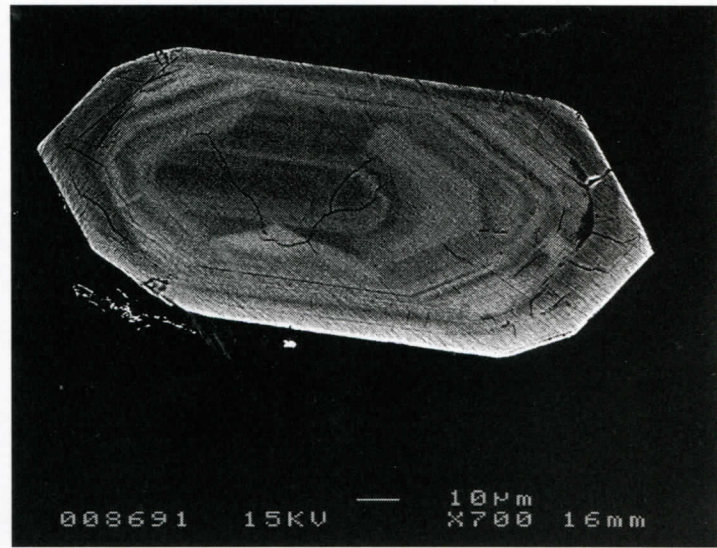
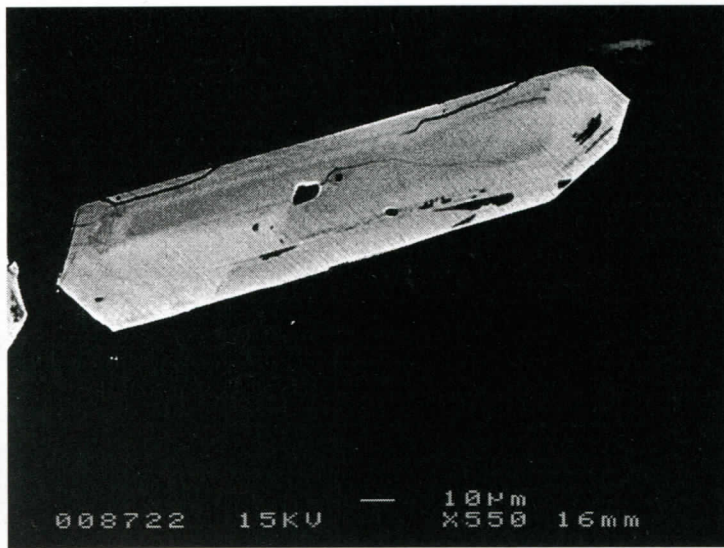
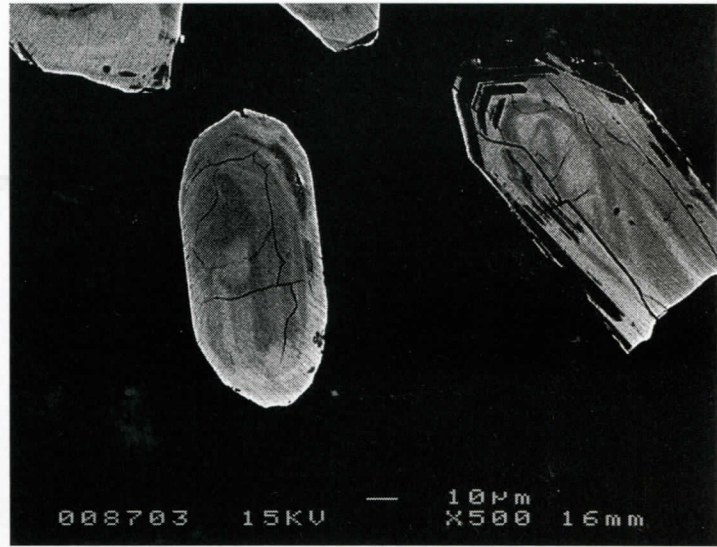
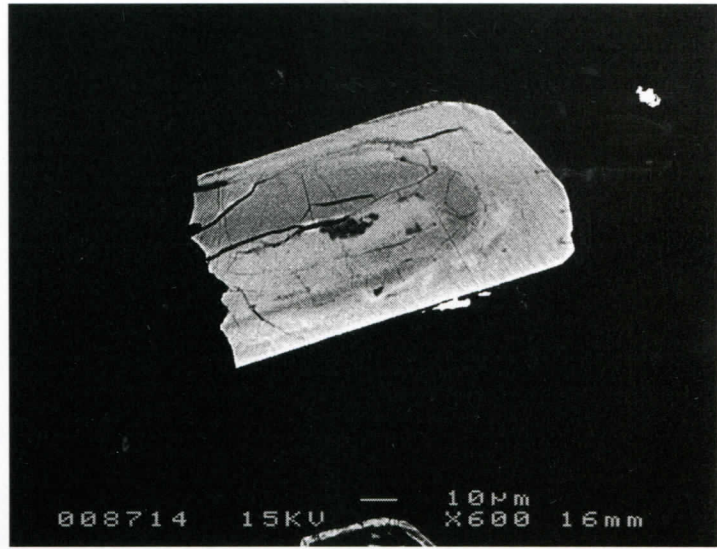
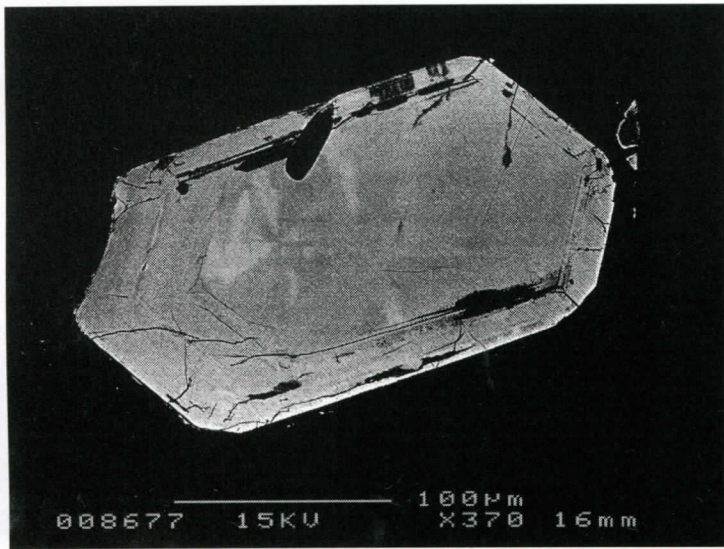
10, 13  
15, 16  
17, 18

15-1 = 3248



M94-301  
 gr. 19, 20  
 21, 22  
 23, 24

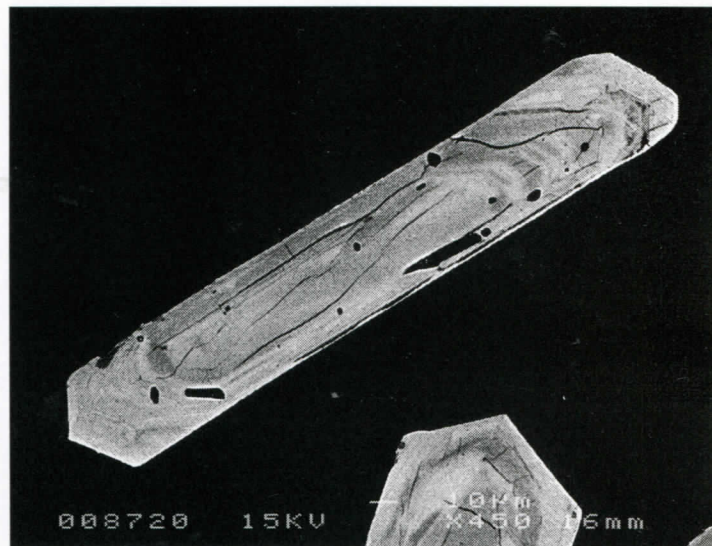
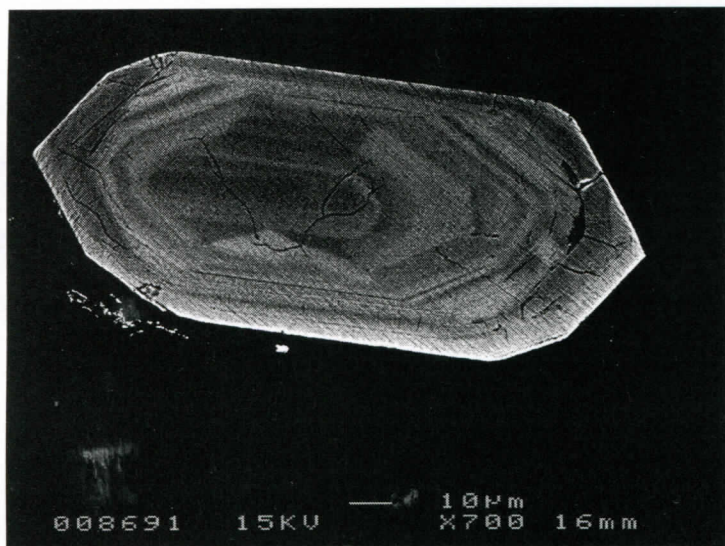
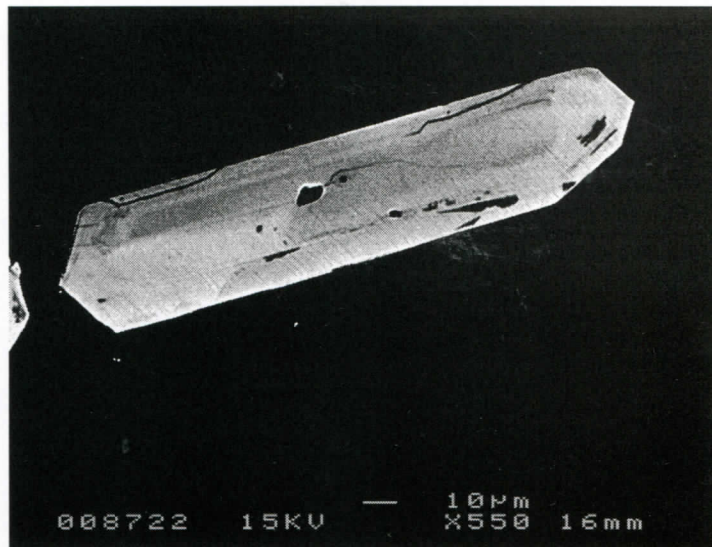
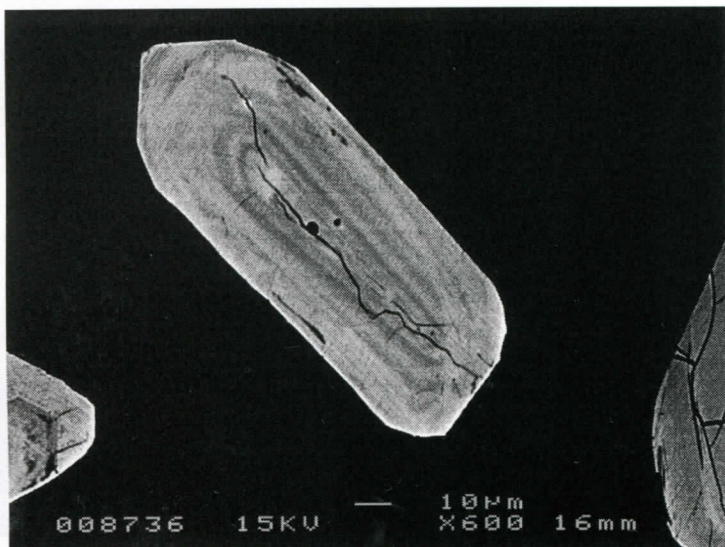




gr 34 = 293333

Ma4-301  
gr. 25, 28  
29, 30  
34, 35

gr 35 = 3477:5  
gr 25 = 2670 drc  
gr 30 attempted #104 = 3436  
(4+)



gr 35 = 3477 ± 5

gr. 33 = 3422 ± 12

M94-301

33, 34

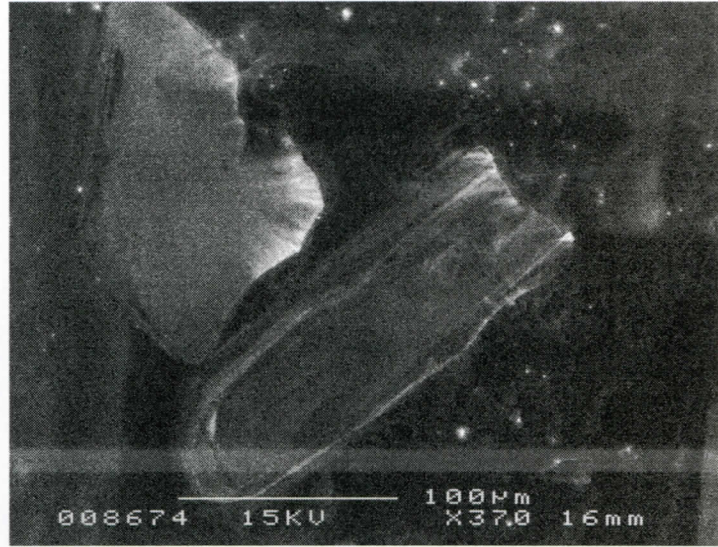
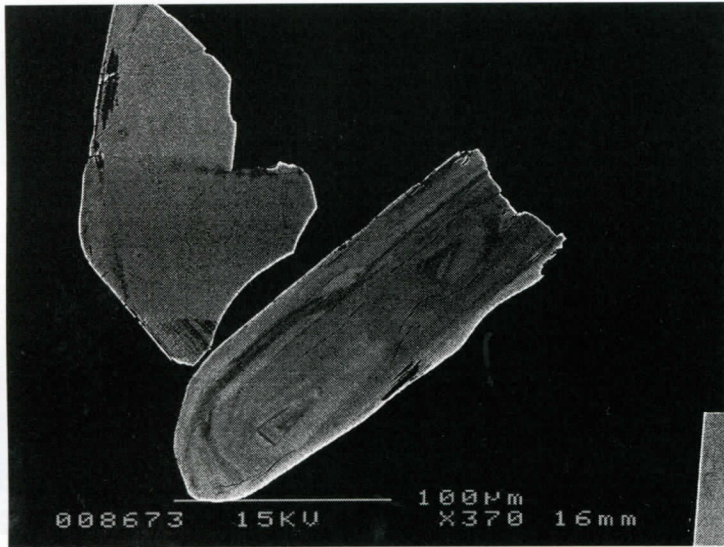
35, 38 = 32, dated by NSM @ 2901 ± 13

33, 34

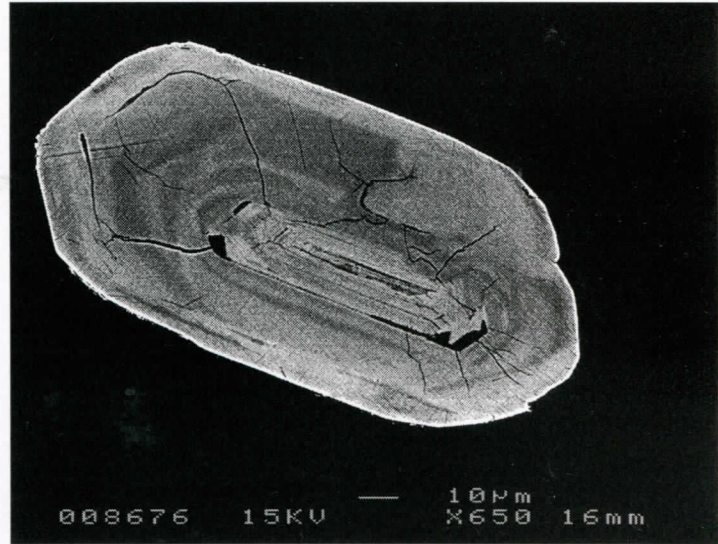
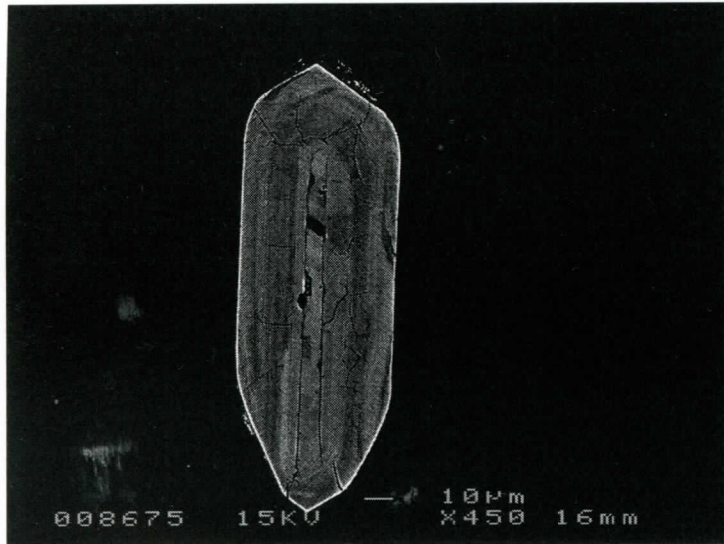
35, 38

044-301

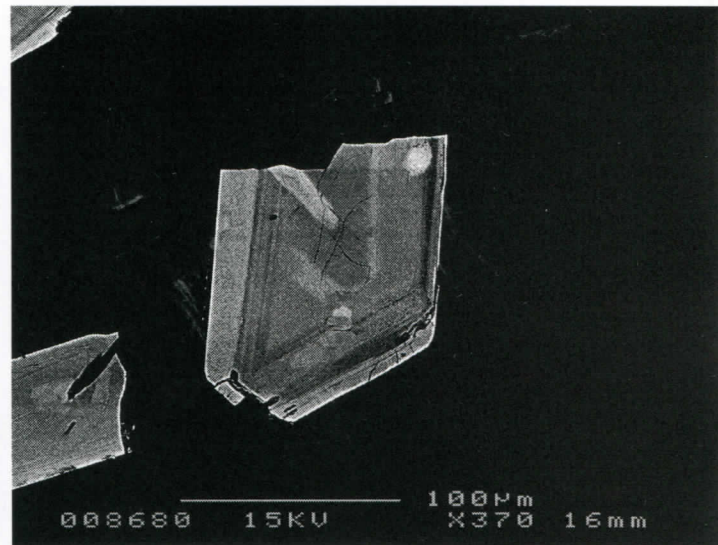
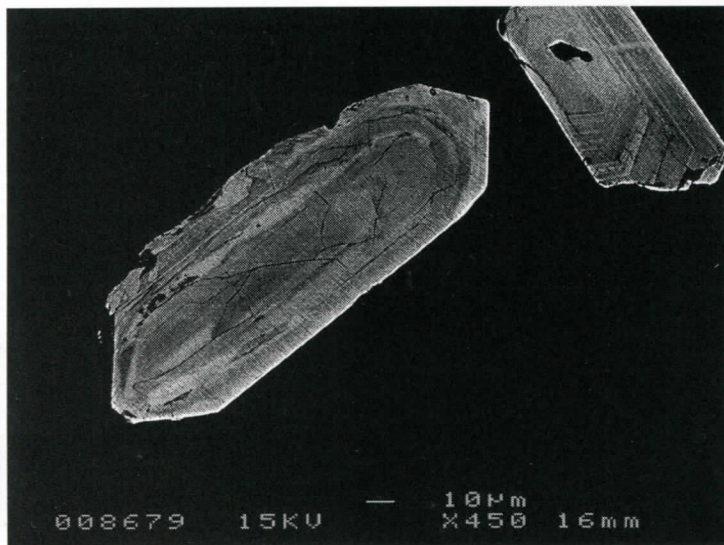
gr. 50



51+52



53+54

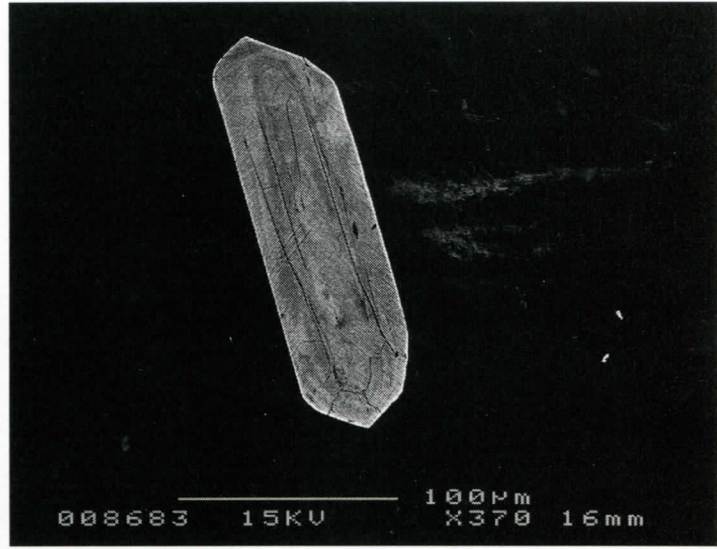
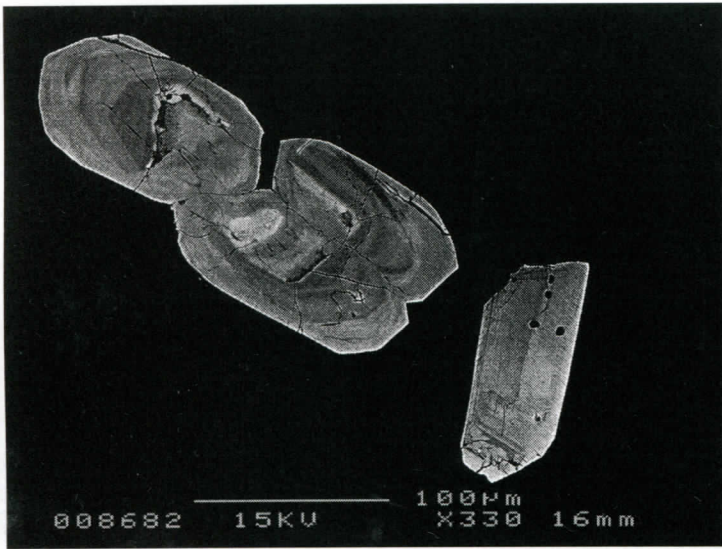


50B, CL  
 51, 52  
 53, 54

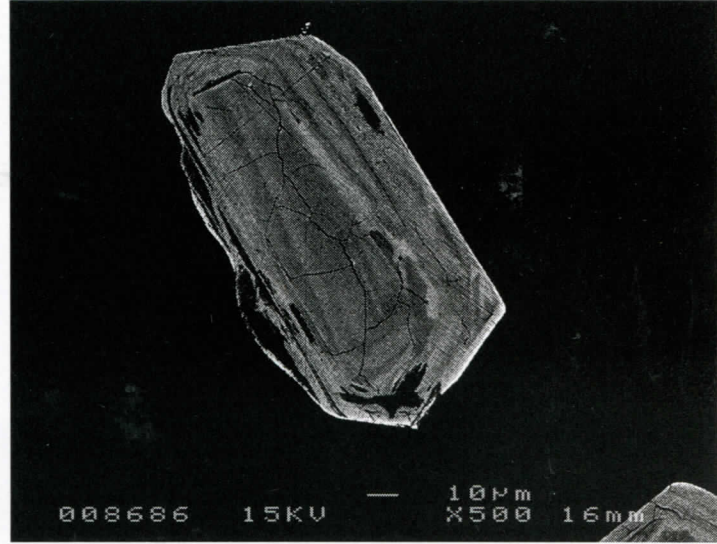
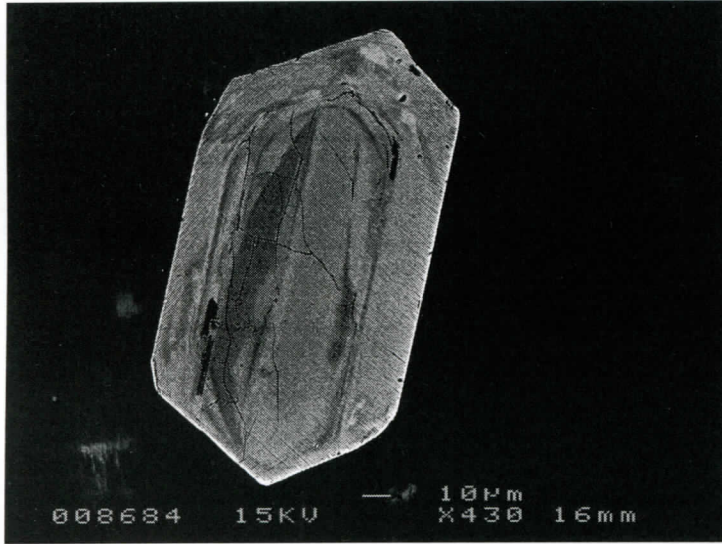
50-1 = 3458  
 52-1 = 3476  
 54-1 = 2468 disc.

M94-301

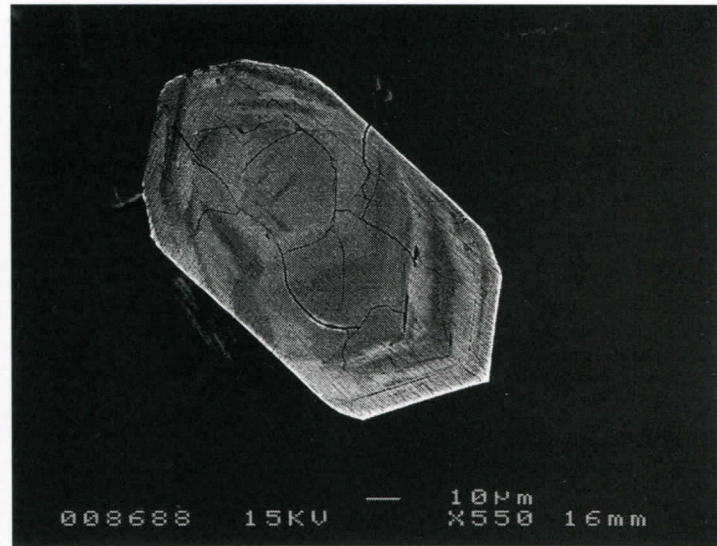
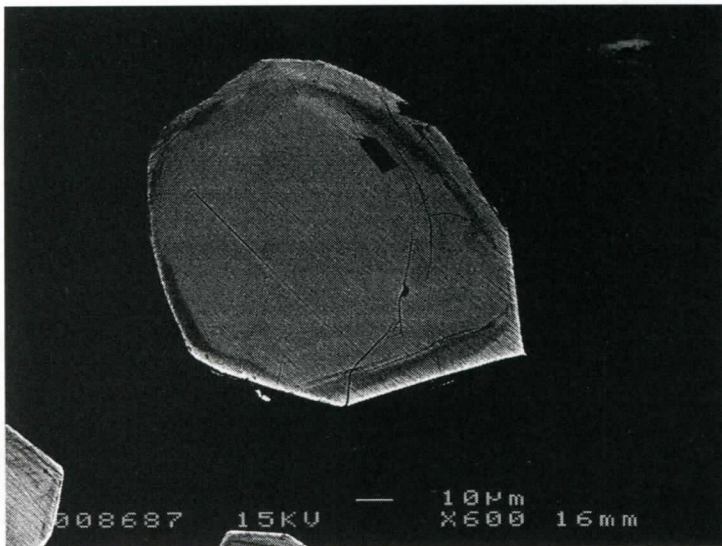
55+56



57+58



59+60



M94-301

55, 56

57, 58

59, 60

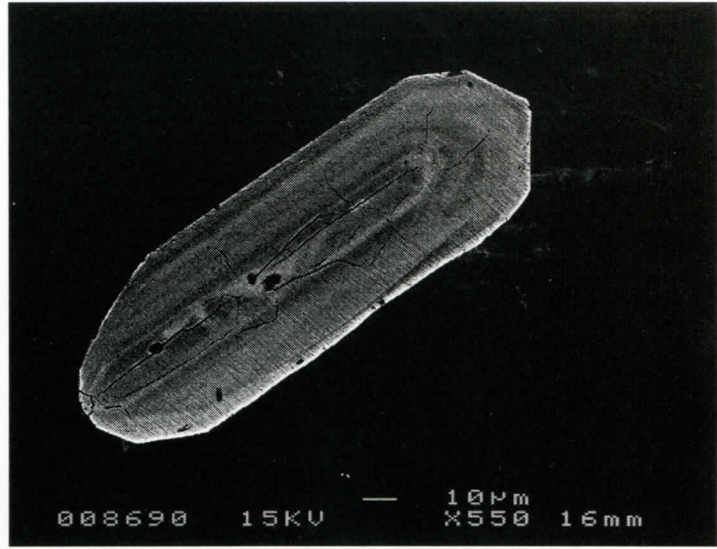
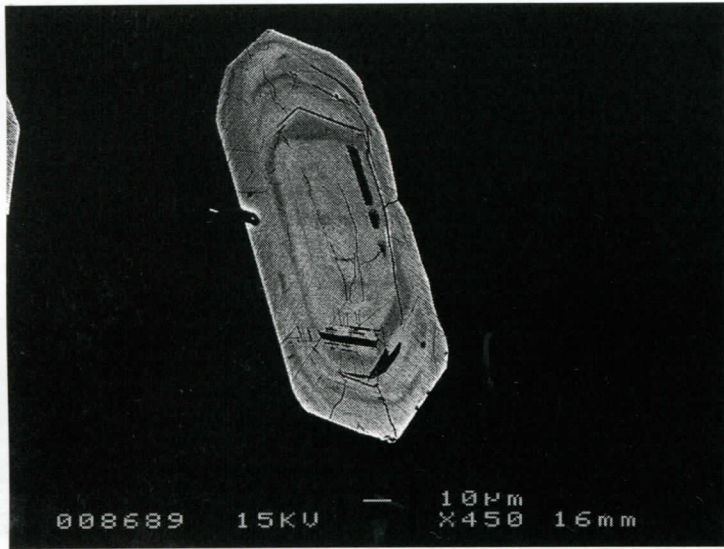
56-1 = disc. @ 2862

57-1 = 3213 (c)

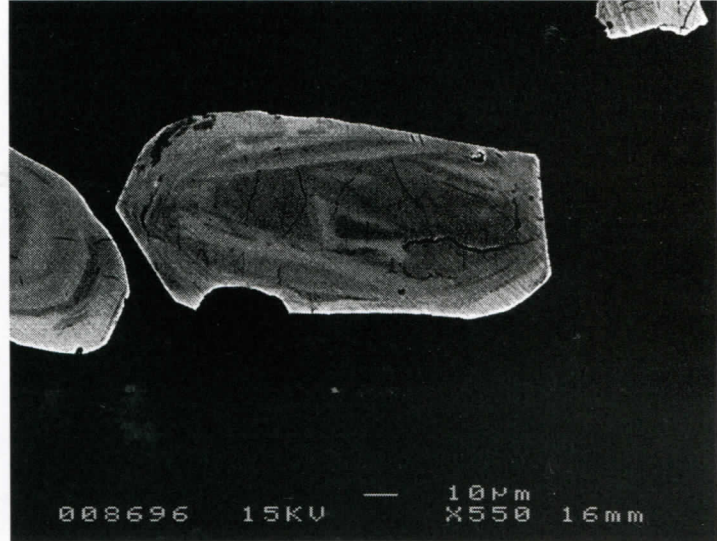
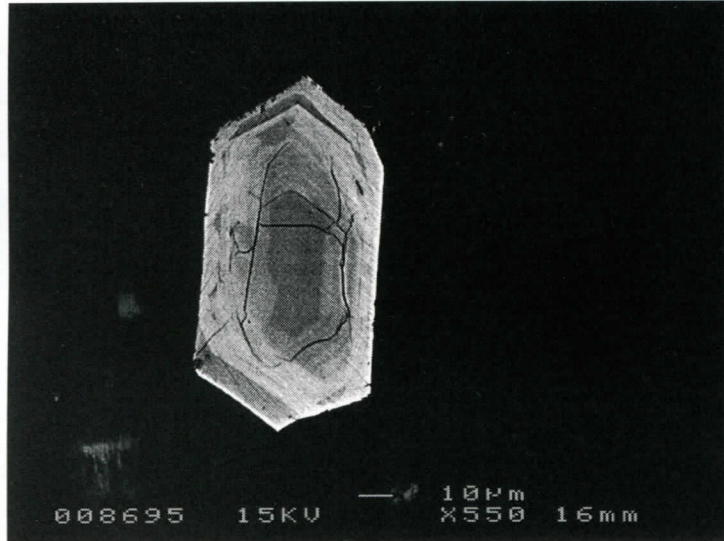
60-1 = 3447

M94-301

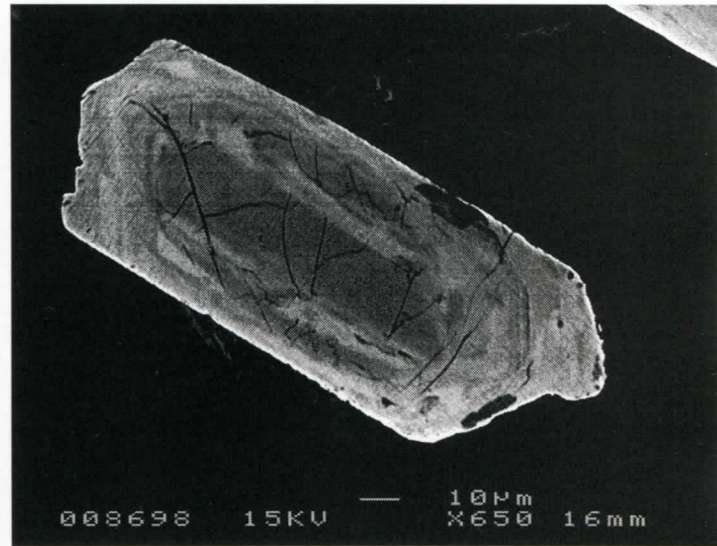
61+62



63+64



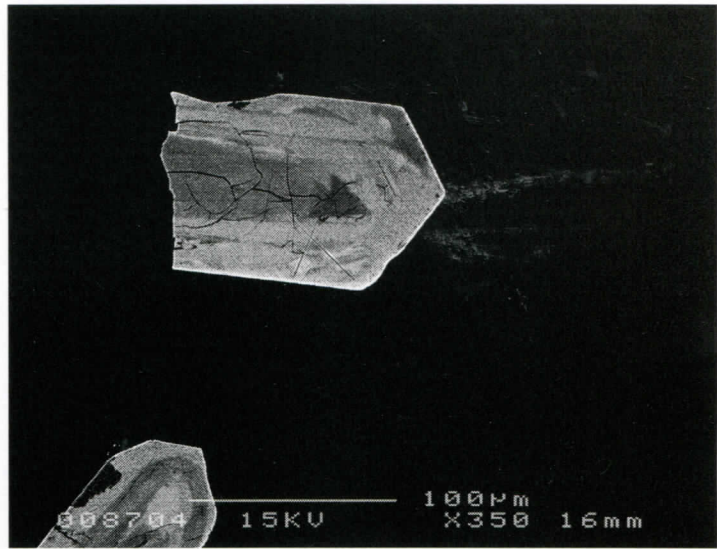
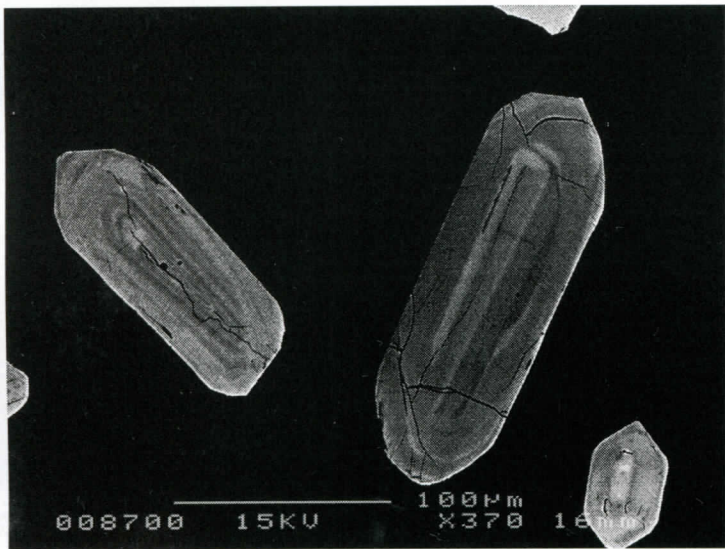
65+66



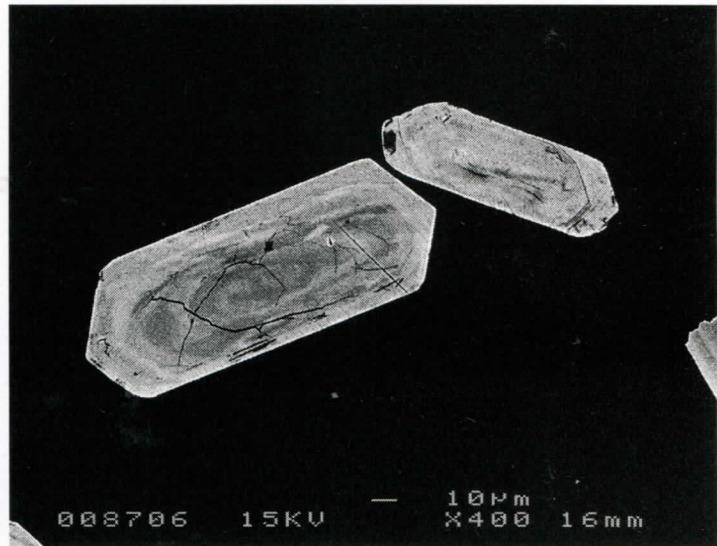
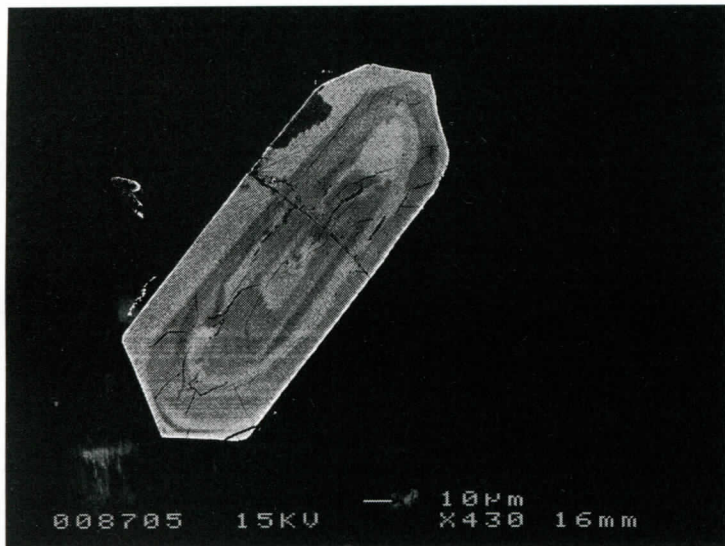
M94-301  
gr 61-66

62-1 = 3495

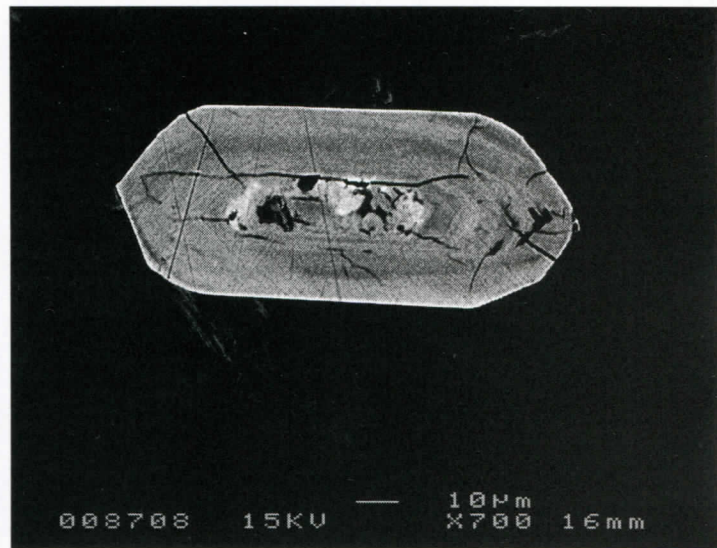
68+69



70+71

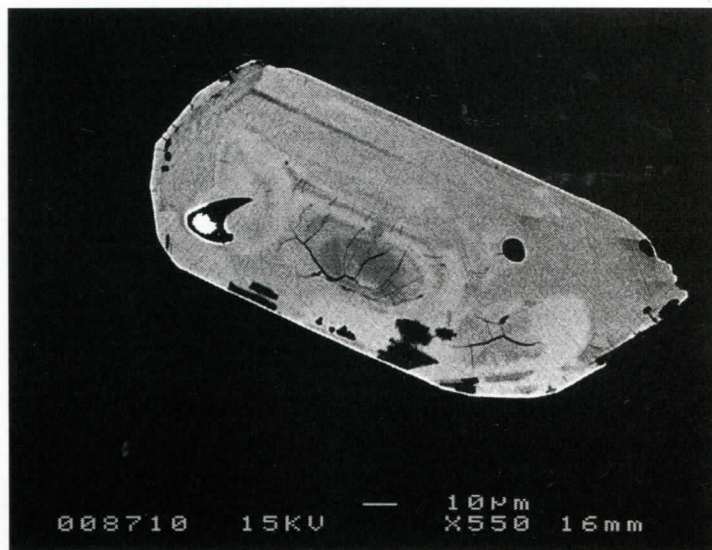
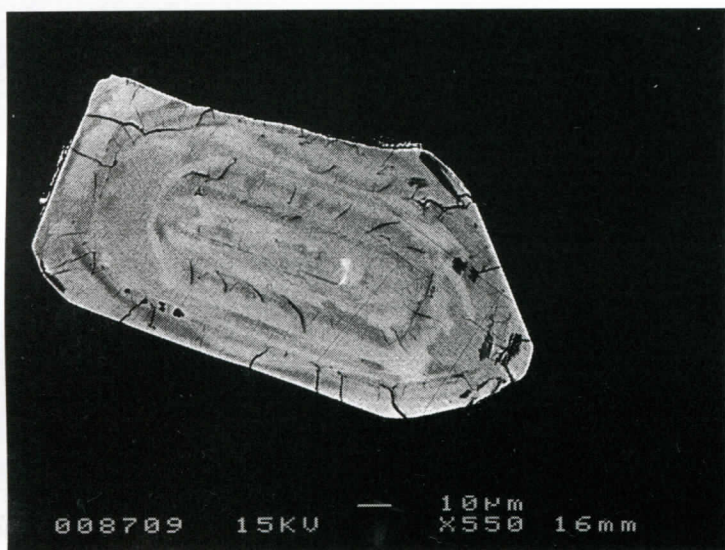


72+73

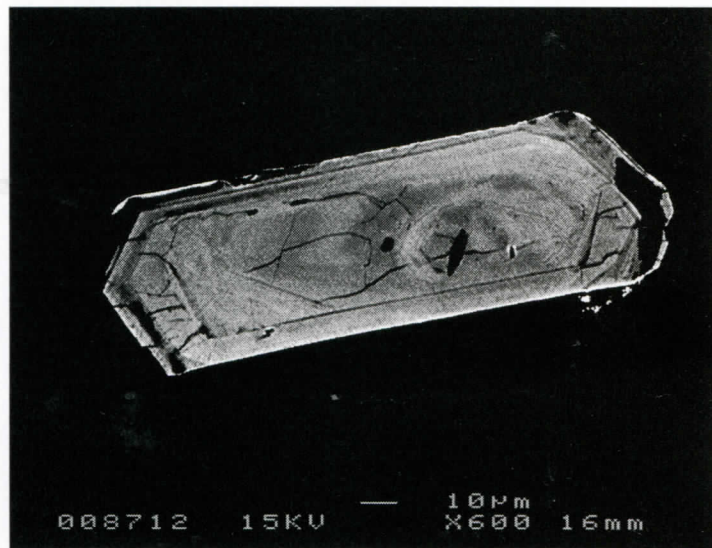
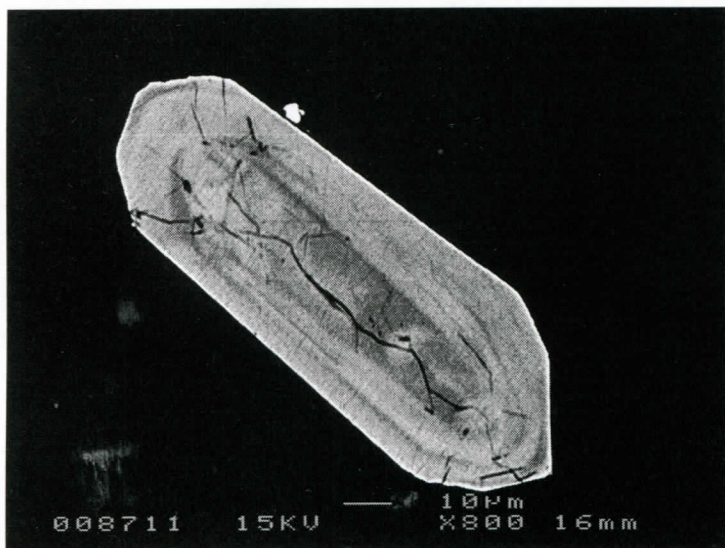


M94-301  
gr 68-73

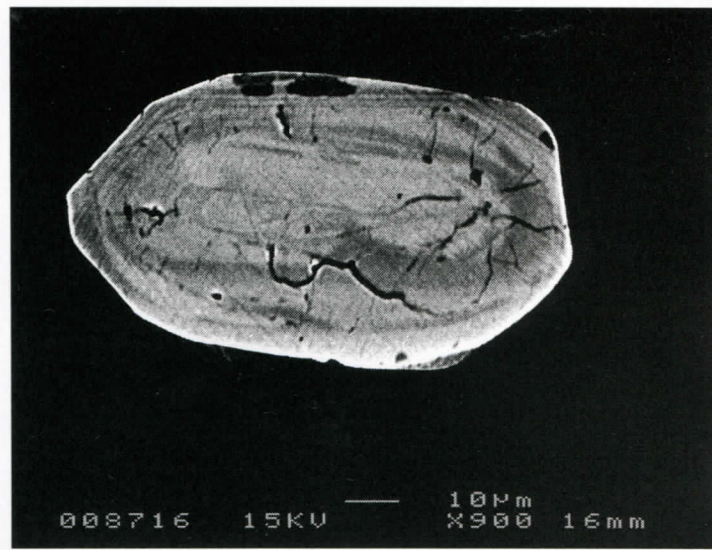
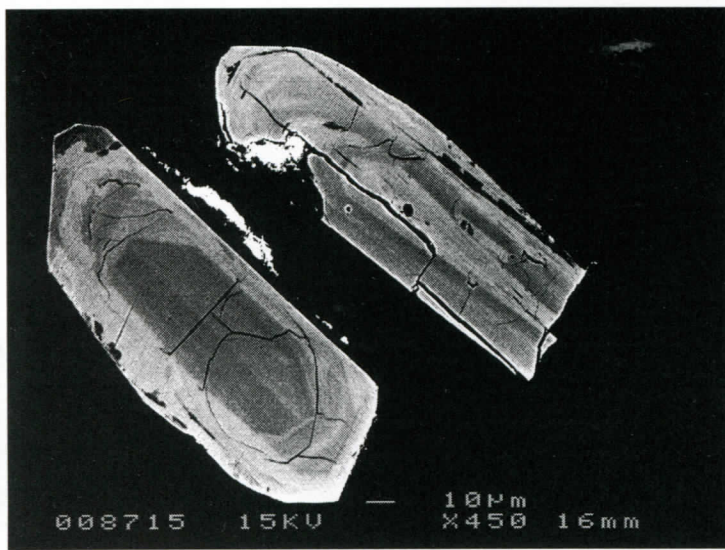
74-75



76-77

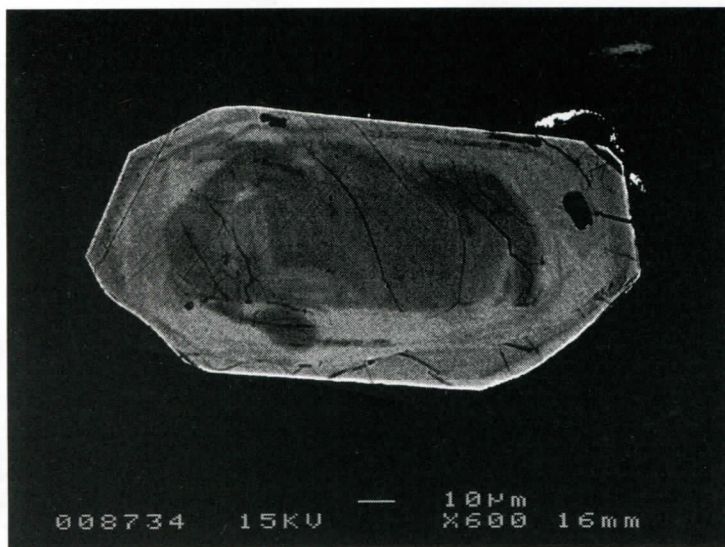
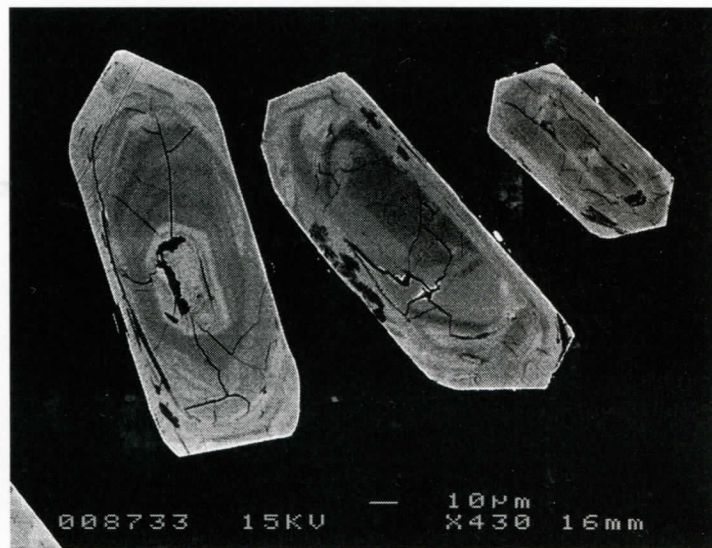
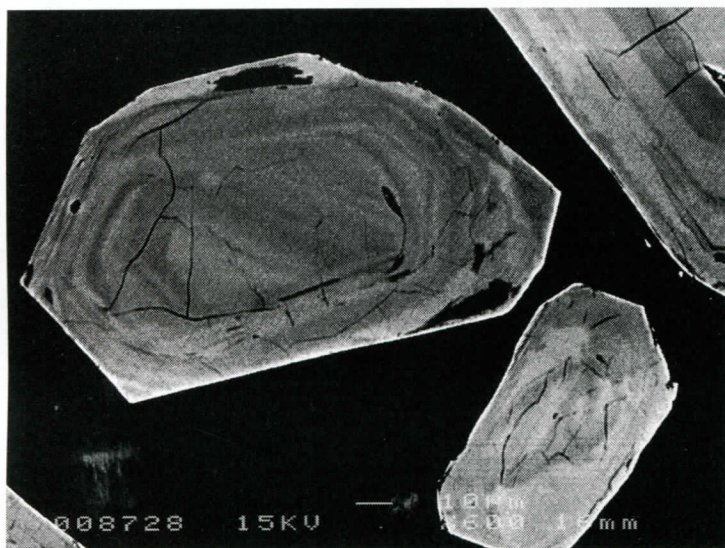
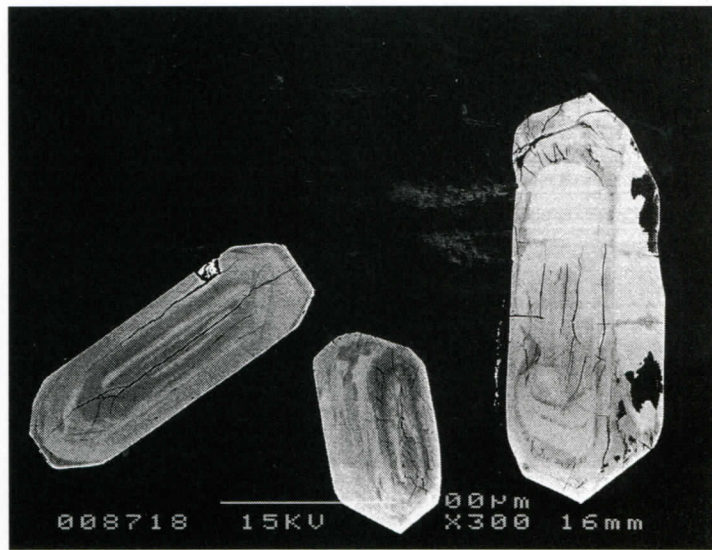
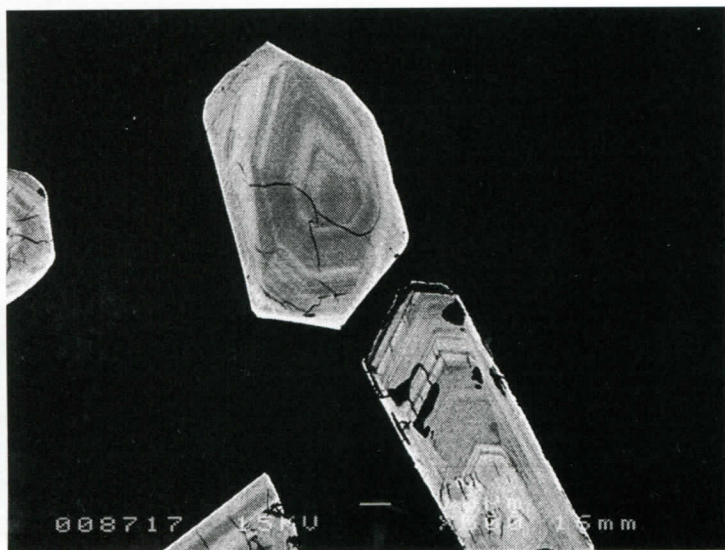


78-79



M94-301  
gr. 74-79

80+81



82 83

- 84

82-1 = 3426  
84-1 = 3470

M44-301  
gr. 80-84