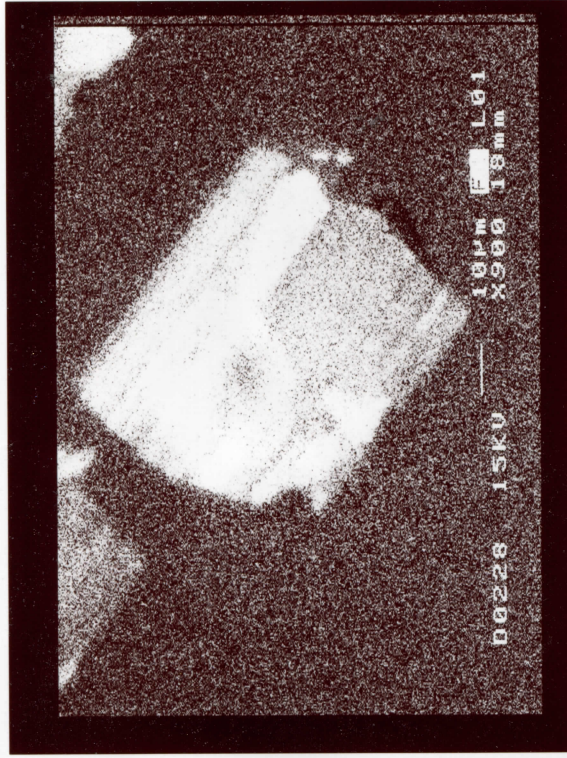


BSE

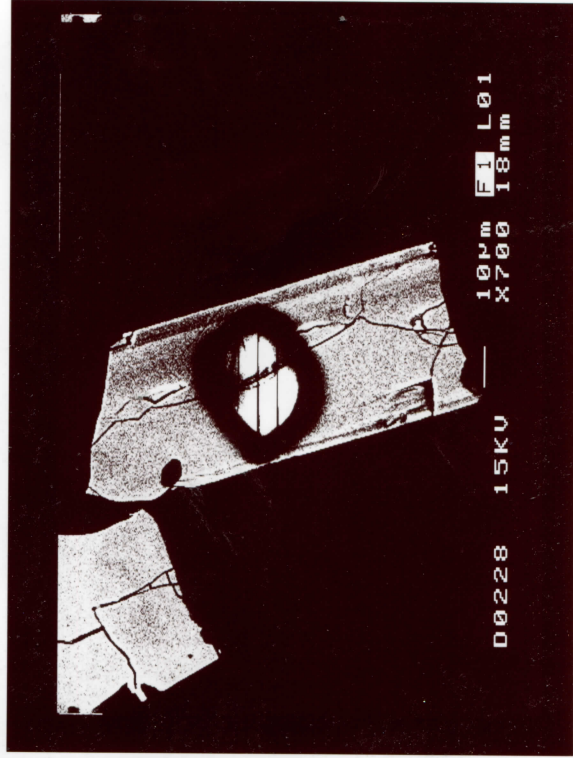


Mount: UWA 96-8 C  
 Grain: 1  
 $^{207}\text{Pb}/^{206}\text{Pb}$  Age:  $2682 \pm 10$  Ma  
 $f_{206}$  (%): 0.18

CL



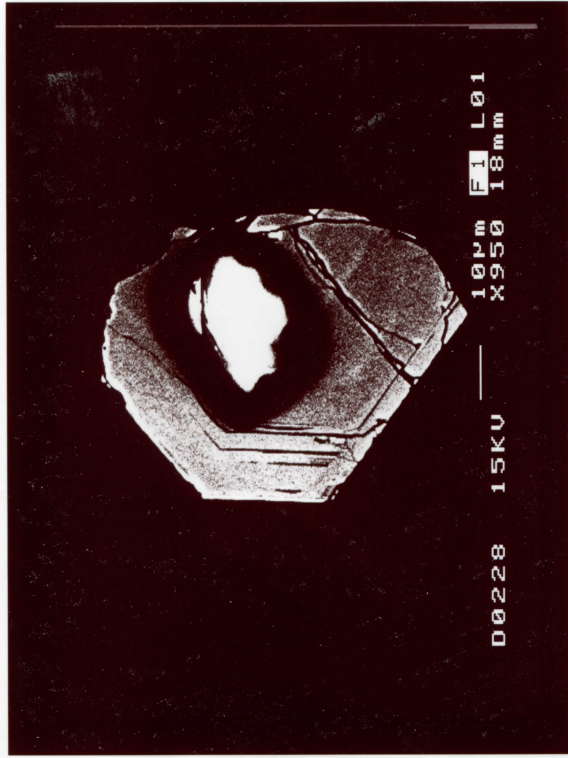
Mount: UWA 96-8 C  
 Grain: 1  
 $^{207}\text{Pb}/^{206}\text{Pb}$  Age:  $2682 \pm 10$  Ma  
 $f_{206}$  (%): 0.18



Mount: UWA 96-8 C  
 Grain: 2  
 $^{207}\text{Pb}/^{206}\text{Pb}$  Age:  $2692 \pm 31$  Ma  
 $f_{206}$  (%): 7.07

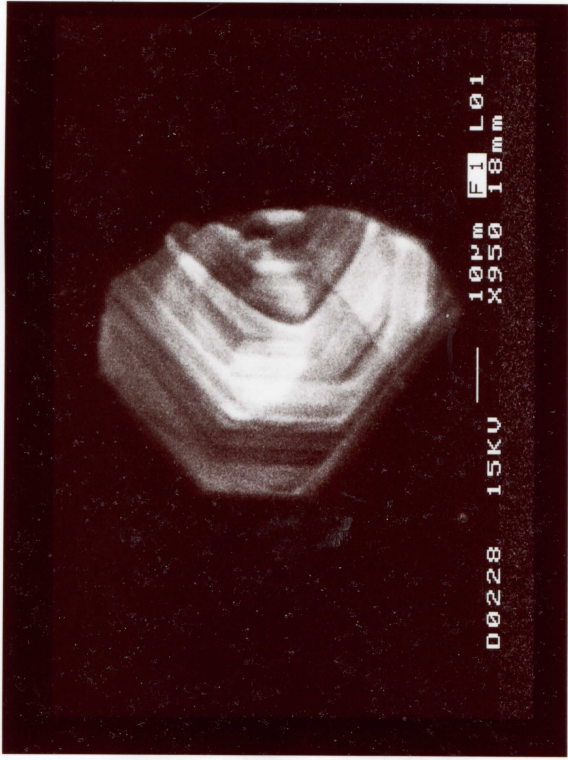
Mount: UWA 96-8 C  
 Grain: 2  
 $^{207}\text{Pb}/^{206}\text{Pb}$  Age:  $2692 \pm 31$  Ma  
 $f_{206}$  (%): 7.07

BSE

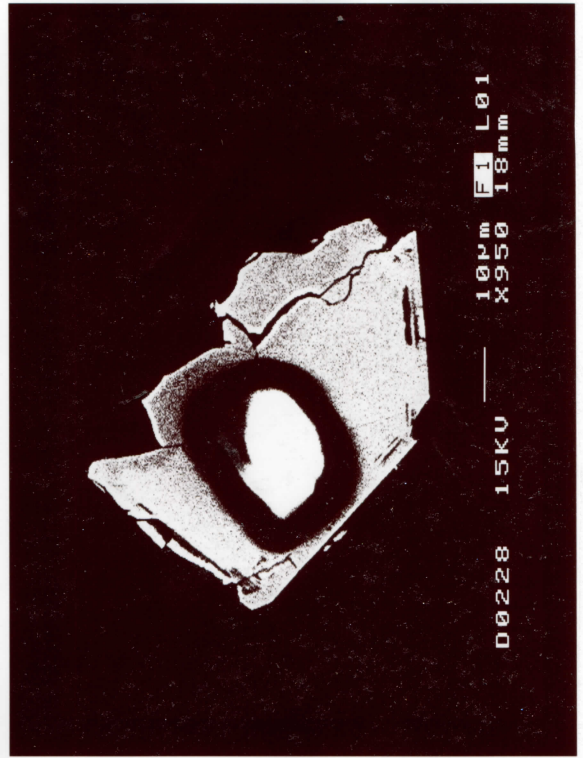


Mount: UWA 96-8 C  $^{207}\text{Pb}/^{206}\text{Pb}$  Age:  $2673 \pm 12$  Ma  
 Grain: 5 f206 (%): 0.07

CL



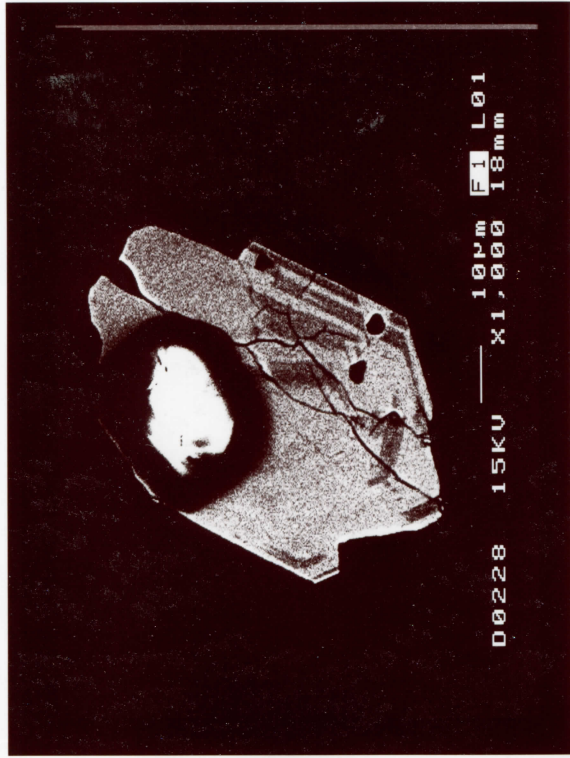
Mount: UWA 96-8 C  $^{207}\text{Pb}/^{206}\text{Pb}$  Age:  $2673 \pm 12$  Ma  
 Grain: 5 f206 (%): 0.07



Mount: UWA 96-8 C  $^{207}\text{Pb}/^{206}\text{Pb}$  Age:  $2676 \pm 6$  Ma  
 Grain: 6 f206 (%): 0.01

Mount: UWA 96-8 C  $^{207}\text{Pb}/^{206}\text{Pb}$  Age:  $2676 \pm 6$  Ma  
 Grain: 6 f206 (%): 0.01

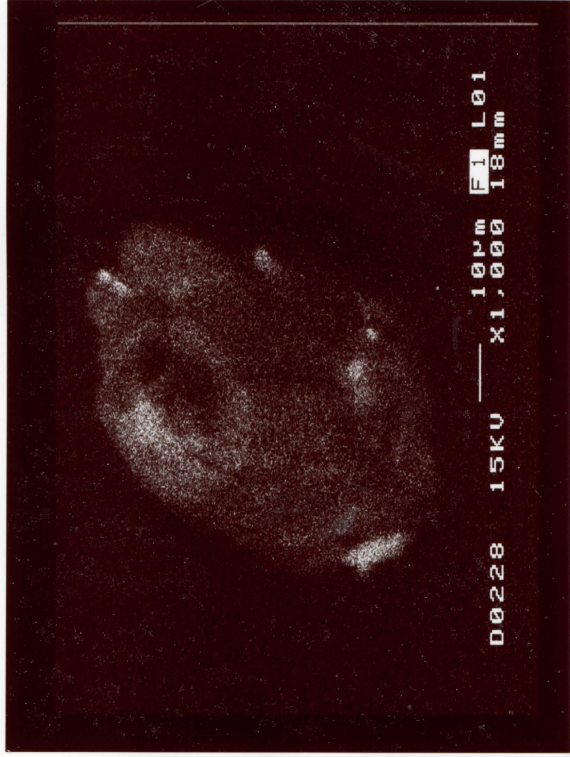
BSE



D0228 15KV 10µm FI L01  
 X1,000 18mm

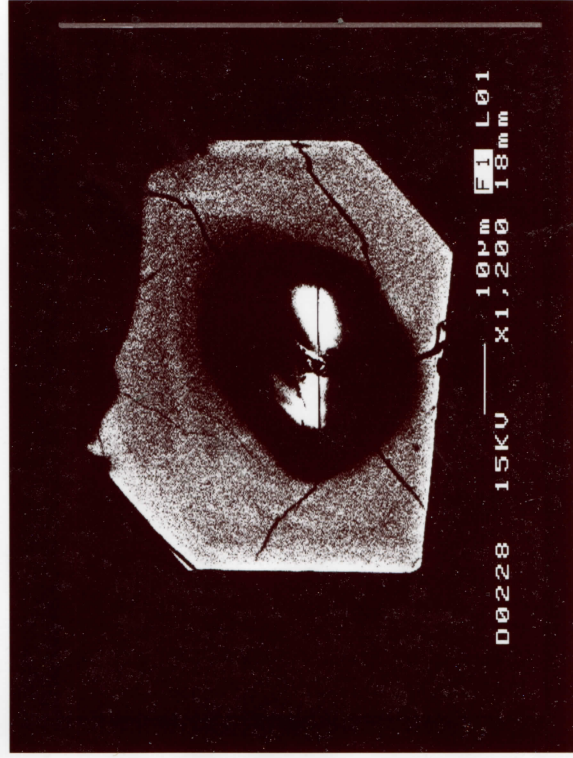
Mount:UWA 96-8 C  $^{207}\text{Pb}/^{206}\text{Pb}$  Age: 2673 ± 15 Ma  
 Grain: 9 f206 (%): 1.92

CL



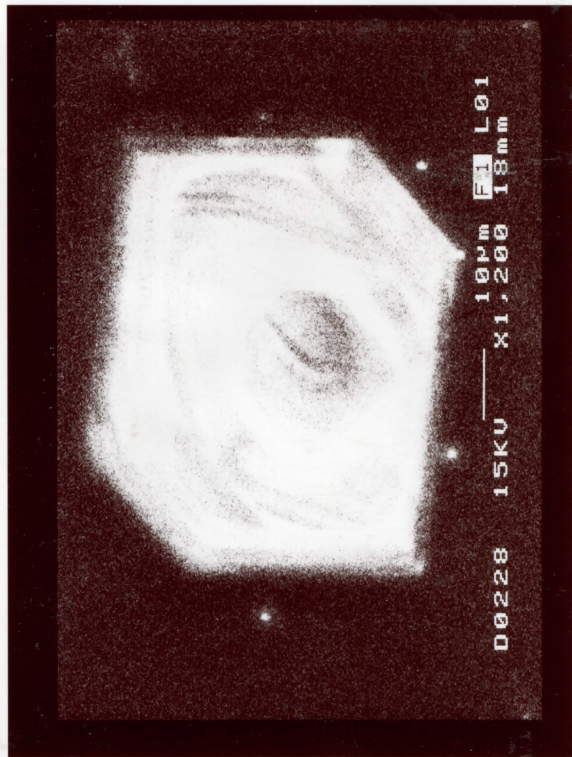
D0228 15KV 10µm FI L01  
 X1,000 18mm

Mount:UWA 96-8 C  $^{207}\text{Pb}/^{206}\text{Pb}$  Age: 2673 ± 15 Ma  
 Grain: 9 f206 (%): 1.92



D0228 15KV 10µm FI L01  
 X1,200 18mm

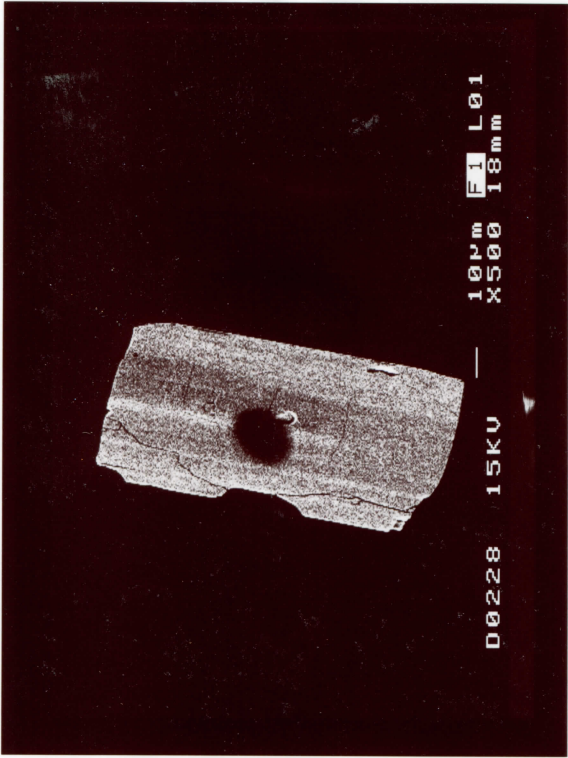
Mount: UWA 96-8 C  $^{207}\text{Pb}/^{206}\text{Pb}$  Age: 2678 ± 8 Ma  
 Grain: 10 f206 (%): 0.21



D0228 15KV 10µm FI L01  
 X1,200 18mm

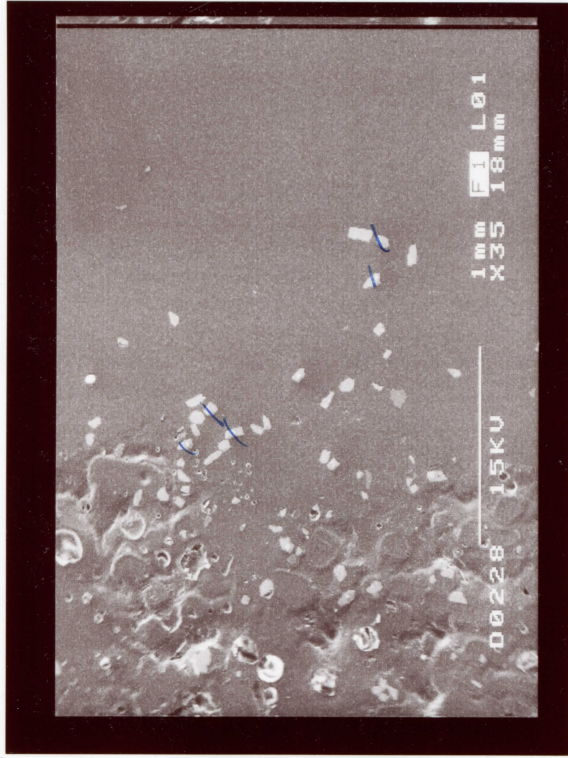
Mount: UWA 96-8 C  $^{207}\text{Pb}/^{206}\text{Pb}$  Age: 2678 ± 8 Ma  
 Grain: 10 f206 (%): 0.21

BSE



Mount: UWA 96-8 C  
Grain: Next to grain #9

SEI



Mount: UWA 96-8 C  
Grain: Melita zircons

Veg No 7123  
198

SHEET NO .....

User Code

- JEOL 6400R SEM

CENTRE FOR MICROSCOPY & MICROANALYSIS

Please enter New US106

	date	operator	user no.	film number	kV	magn.	Stuart Brown specimen/ conditions/ comments
1	MAR 25/96	A Ross	19	1577	15	1,100	Grain #7 - <del>BSE</del> CL 2688 ± 5 md. 96-8A Black Flag
2	MAR 25/96	A Ross	19	1578	15	900	Grain #9 - CL 2694 ± 4 md. "
3	"	"	"	1579	15	900	Grain #9 - BSE " "
4	MAR 25/96	A Ross	19	1580	15	700	Grain #8 - BSE 2658 ± 5 md. "
5	"	"	"	1581	15	700	Grain #8 - CL " 96-8A Black Flag
6	MAR 25/96	A Ross	19	1582	15	900	Grain #14 - CL 2661 ± 4 md. "
7	"	"	"	1583	15	900	Grain #14 - BSE (320s) "
8	MAR 23/96	A Ross	19	1584	15	800	Grain #3 BSE 2701 ± 6 md. 96-8C Melitta 68
9	"	"	19	1585	15	800	Grain #3 CL " "
10	MAR 23/96	A Ross	19	1586	15	900	Grain #4 BSE 2670 ± 10 md. 96-8C Melitta 68
11	"	"	19	1587	15	900	Grain #4 CL " "
12	MAR 23/96	A Ross	19	1588	15	650	Grain #14 BSE 2676 ± 7 " "

Neg# 111b

## CENTRE FOR MICROSCOPY &amp; MICROANALYSIS - JEOL 6400R SEM SHEET NO .....199.....

	date	operator	user no.	film number	kV	magn.	Stuart Brown specimen/ conditions/ comments
1	MAR 25/96	A. Ross	19	1589	15	650	Grain #14-CL 2676±7 96-8 Melita 68
2	"	"	19	1590	15	750	Grain #8-CL 2669±7 "
3	MAR 25/96	A. Ross	19	1590	15	750	Grain #8-BSE "
4	MAR 25/96	A. Ross	19	1591	15	1,100	Grain #9-BSE 2673±15 "
5	MAR "	A. Ross	19	1592	15	1,200	Grain #10-BSE 2678±8 96-8 Melita 68
6	"	A. Ross	19	1593	15	1,1200	Grain #10-CL "
7	March 25/96	A. Ross	19	1594	15	700	Grain #11-CL 2685±5 "
8	"	"	19	1595	15	700	Grain #11-BSE " 96-8 Melita 68
9	MAR 25/96	A. Ross	19	1596	15	950	Grain #12-BSE 2687±20 96-8 Melita 68
10	"	"	19	1597	15	1300	Grain #13-CL 2677±9 96-8 Melita 68
11	"	"	19	1598	15	950	Grain #5 BSE 2673±12 96-8 Melita 68
12	MAR 23/96	"	19	1599	15	950	Grain #5 CL "

#7118

SHEET NO ..... 196

## CENTRE FOR MICROSCOPY &amp; MICROANALYSIS - JEOL 6400R SEM

	date	operator	user no.	film number	kV	magn.	Stuart Brew N.	specimen/ conditions/ comments
1	Mar 25/96	A Ross	19	1554	15	450	Grain #13, BSE	2633±4 96-8 Pop A: Black Flag
2	"	"	"	1555	15	450	Grain # 13, CL.	"
3	Mar 25/96	A Ross	19	1556	15	430	Grain # 5, BSE - 320s exp -	2675±19 96-8 Pop A: Black Flag
4	"	"	"	1557	15	430	Grain # 5, CL.	"
5	Mar 25/96	A Ross	19	1558	15	1,100	Grain # 6, <del>CL</del>	2680±5 96-8 Pop A Black Flag
6	"	"	"	1559	15	1,100	Grain # 6 BSE	"
7	Mar 25/96	A Ross	19	1560	15	550	Grain # 4 BSE	2681±6 96-8, Pop A Black Flag -
8	"	"	"	1561	15	550	Grain # 4 CL	"
9	Mar 25/96	A Ross	19	1562	15	900	Grain # 15 CL	2686±4 96-8, Pop A Black Flag
10	"	"	"	1563	15	900	Grain # 15 BSE	"
11	Mar 25/96	A Ross	19	1564	15	800	Grain # 3 BSE	2671±8 96-8, Pop A Black Flag
12	"	"	"	1565	15	800	Grain # 3 CL	"

Neg# 7091

CENTRE FOR MICROSCOPY & MICROANALYSIS - JEOL 6400R SEM SHEET NO .....197.....

	date	operator	user no.	film number	kV	magn.	Sheet Brand	specimen/ conditions/ comments
1	MAR 25/96	A. Ross	19	1566	15	650	Grain #1 - CL	2685 ± 8 96-8A Black Flag
2	"	"	"	1567	15	650	Grain #1 - BSE	"
3	MAR 25/96	A. Ross	19	1568	15	750	Grain #10 - BSE	2685 ± 4 96-8A Black Flag
4	"	"	"	1569	15	750	Grain #10 - CL	"
5	MAR 25/96	A. Ross	19	1570	15	700	Grain #11 - CL	2705 ± 9 96-8A Black Flag
6	"	"	"	1571	15	700	Grain #11 - BSE	"
7	MAR 25/96	A. Ross	19	1572	15	900	Grain #12 - BSE	2666 ± 6 96-8A Black Flag
8	"	"	"	1573	15	900	Grain #12 - CL	"
9	MAR 25/96	A. Ross	19	1574	15	600	Grain #2 - CL	2660 ± 4 96-8A Black Flag
10	"	"	19	1575	15	600	Grain #2 - BSE	"
11				1576	15	1,100	Grain #7 - BSE	
12				1577	15	800	Grain #9 - BSE	

Contrast Y10

TOO DARK!