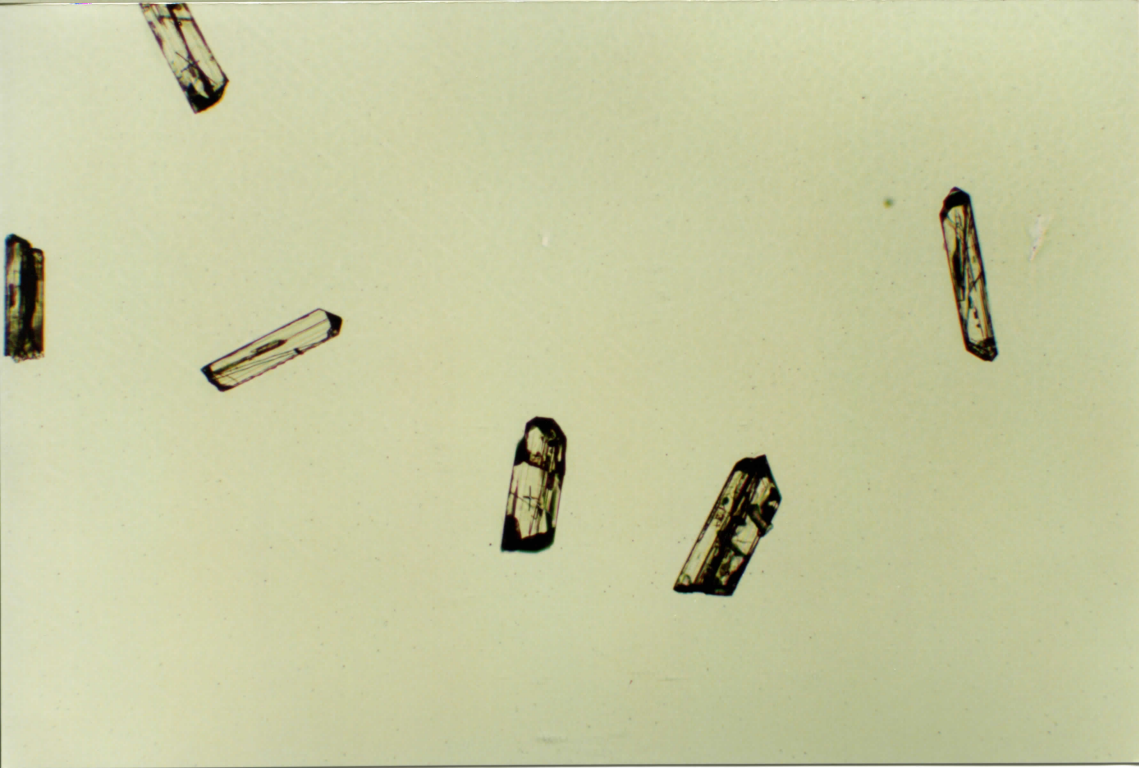
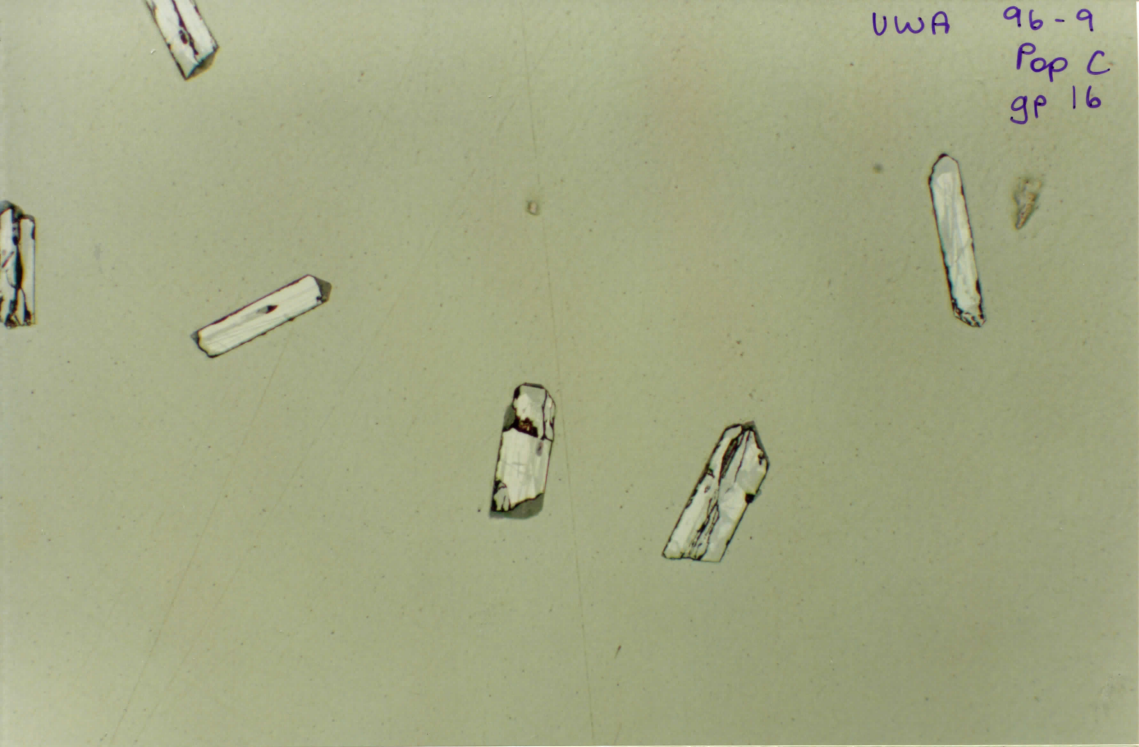
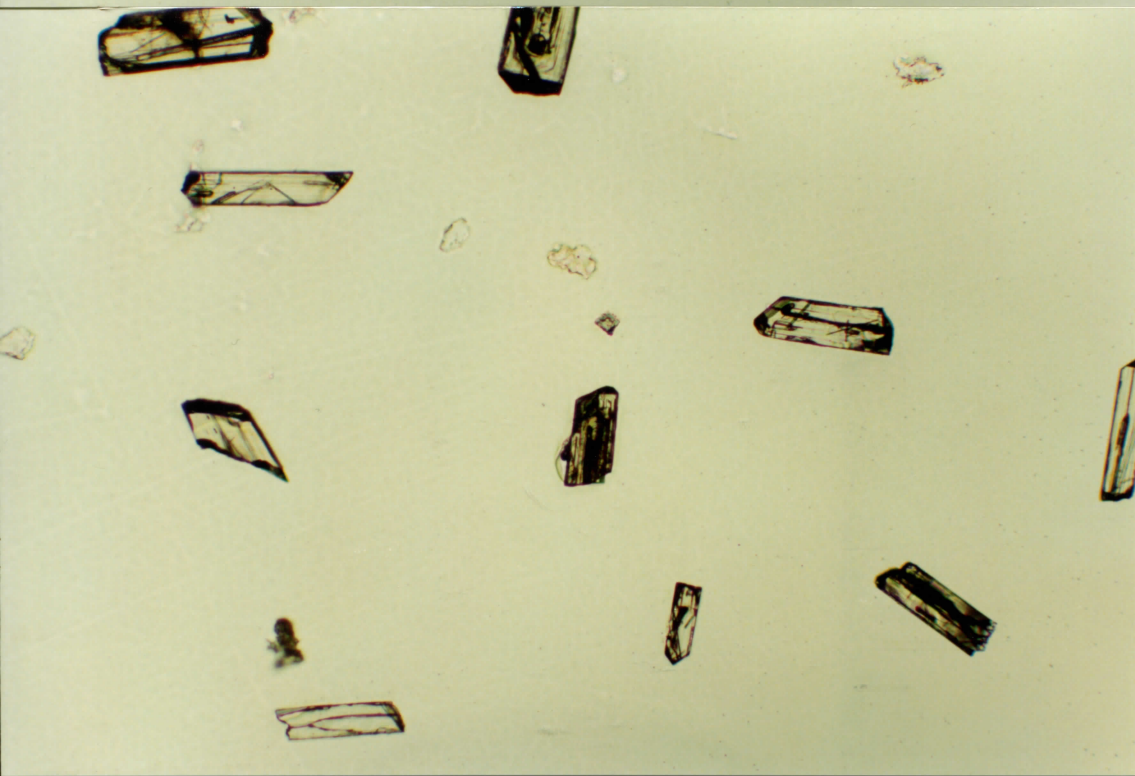
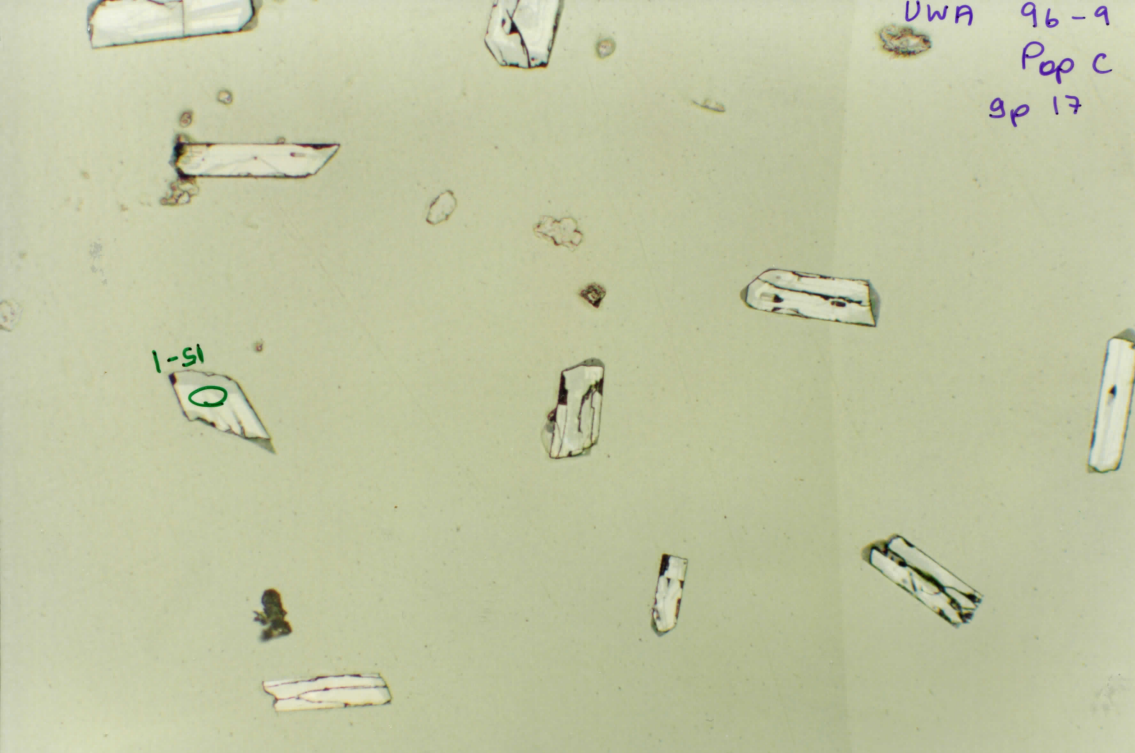


UWA 96-9  
Pop C  
gp 16

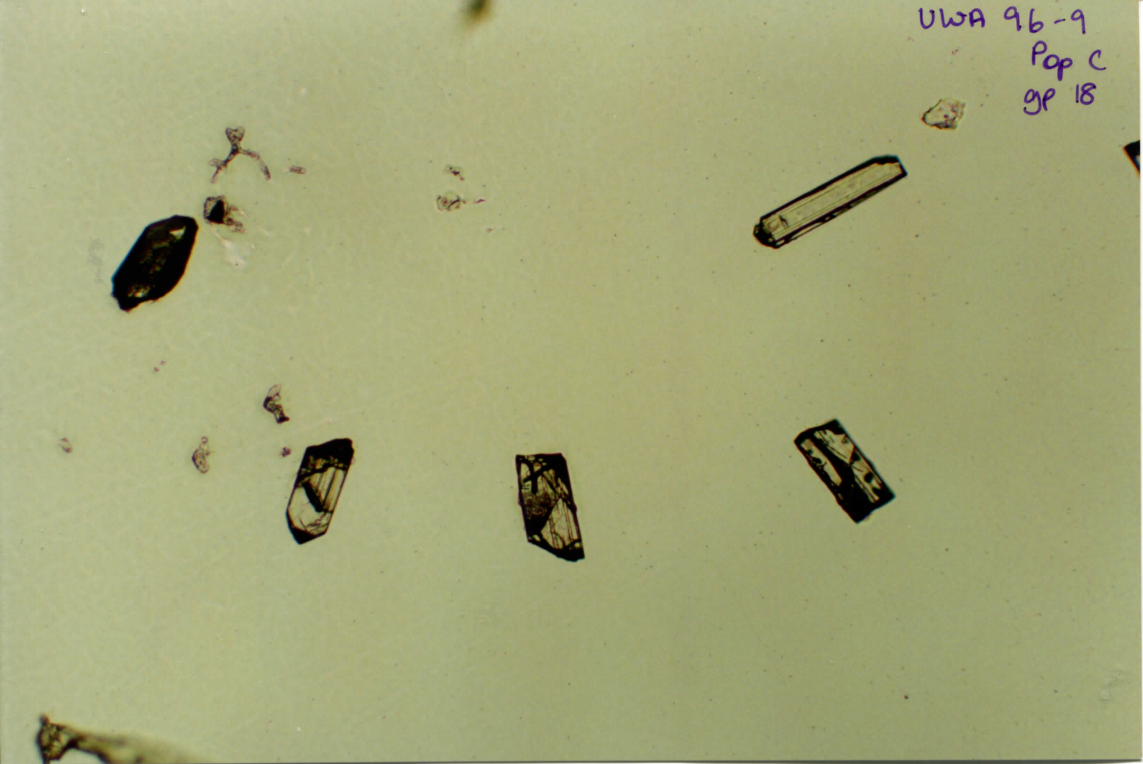


DWA 96-9  
Pop C  
gp 17

1-51  
0



UWA 96-9  
Pop C  
gp 18



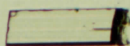
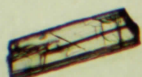
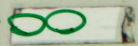
UWA 96-9

Pop C

gp 19

1-81

2-81

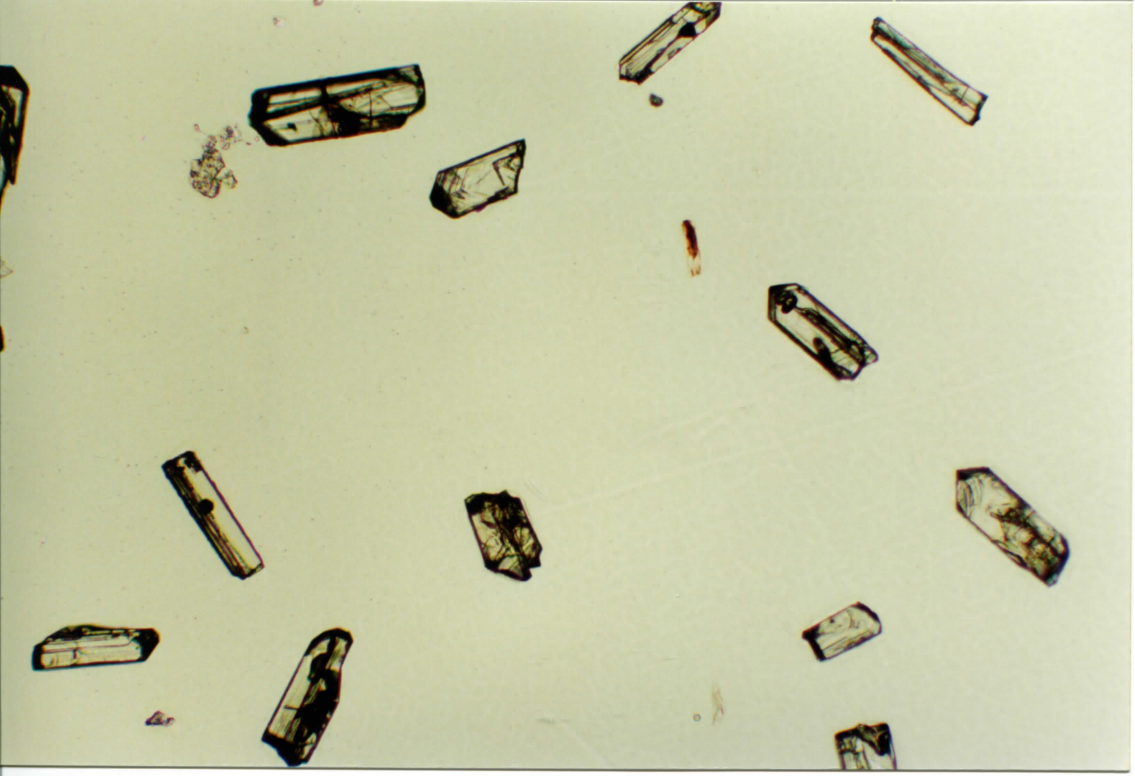
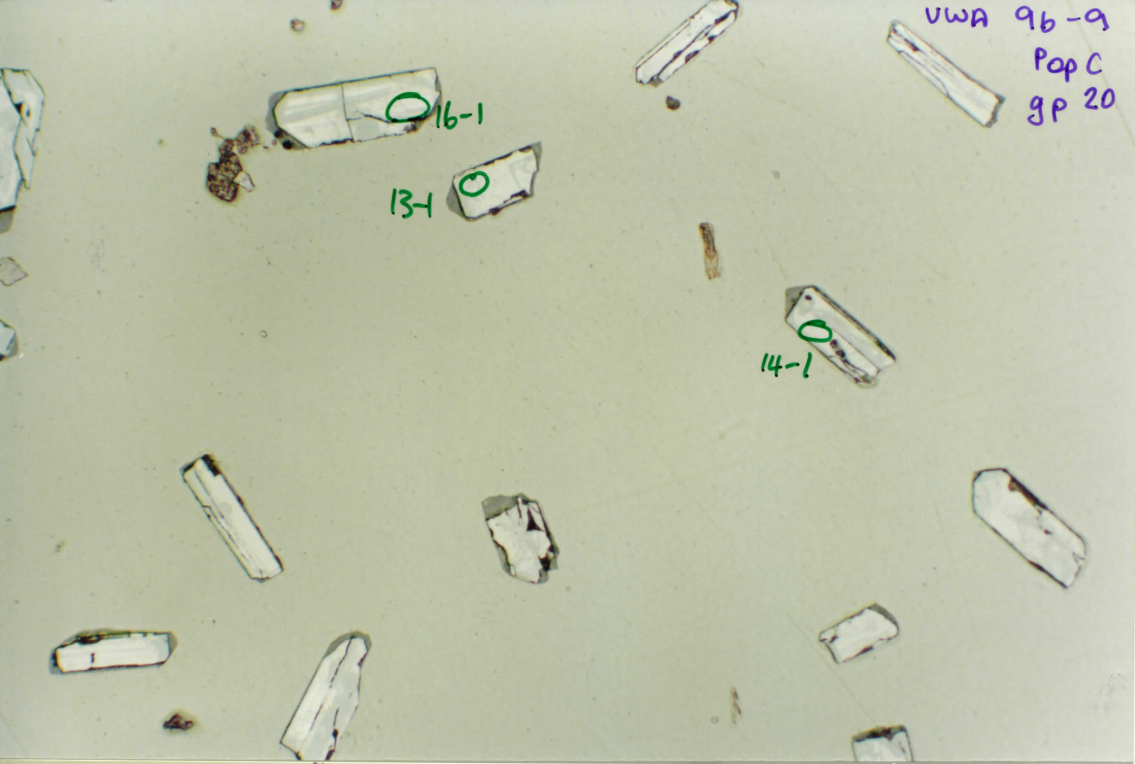


vwa 9b-9  
Pop C  
gp 20

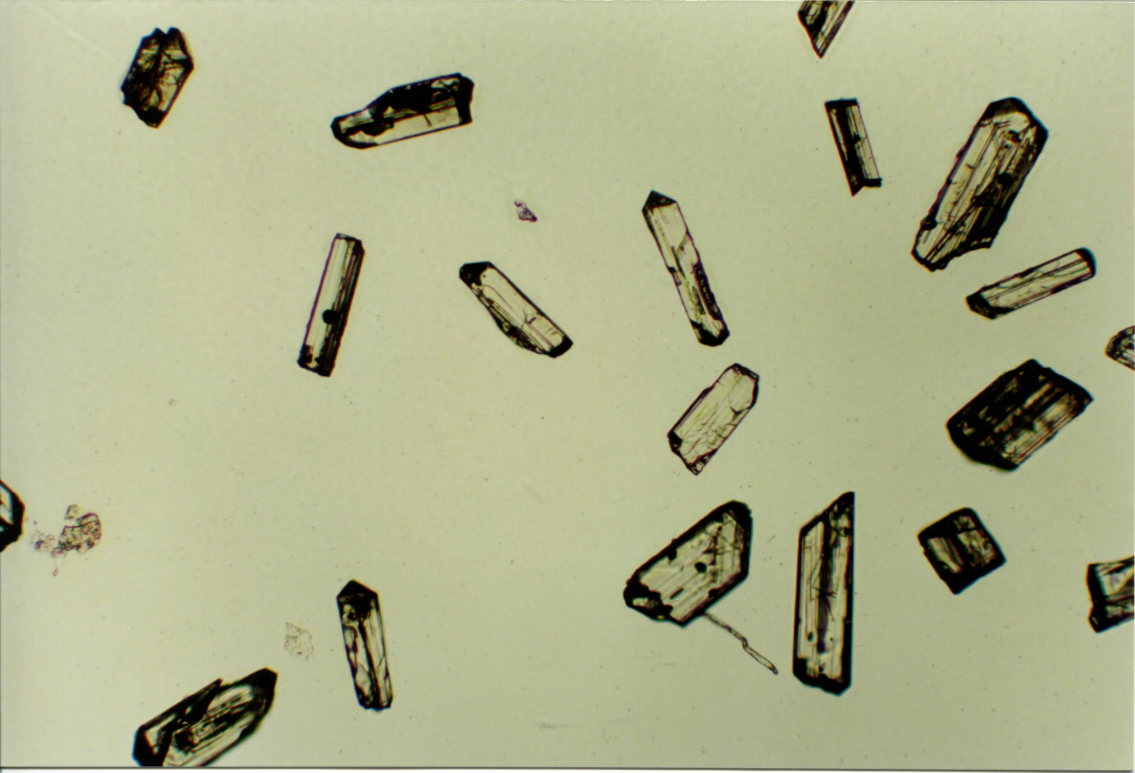
16-1

13-1

14-1



UWA 96-9  
Pop C  
gp 21



UWA 96-9  
Pap C  
gp 22

2-b  
Q

1-b

1-8  
Q

SOL  
1-2

1-4

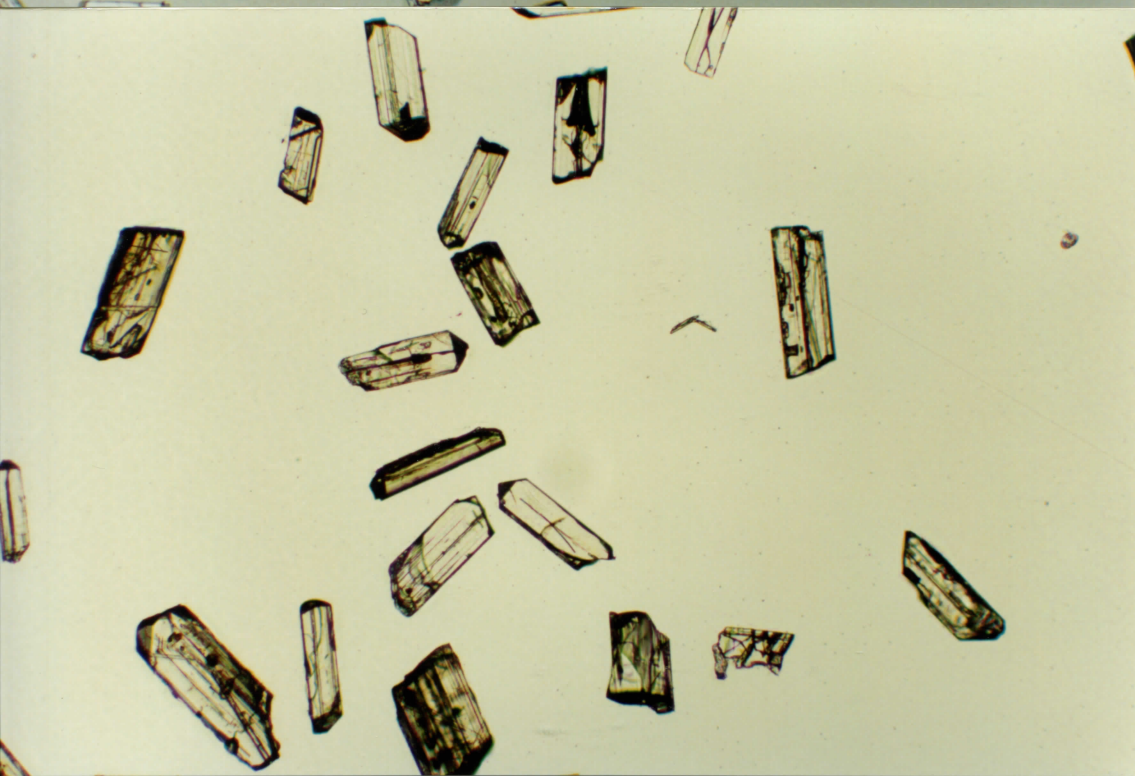
1-9

1-2

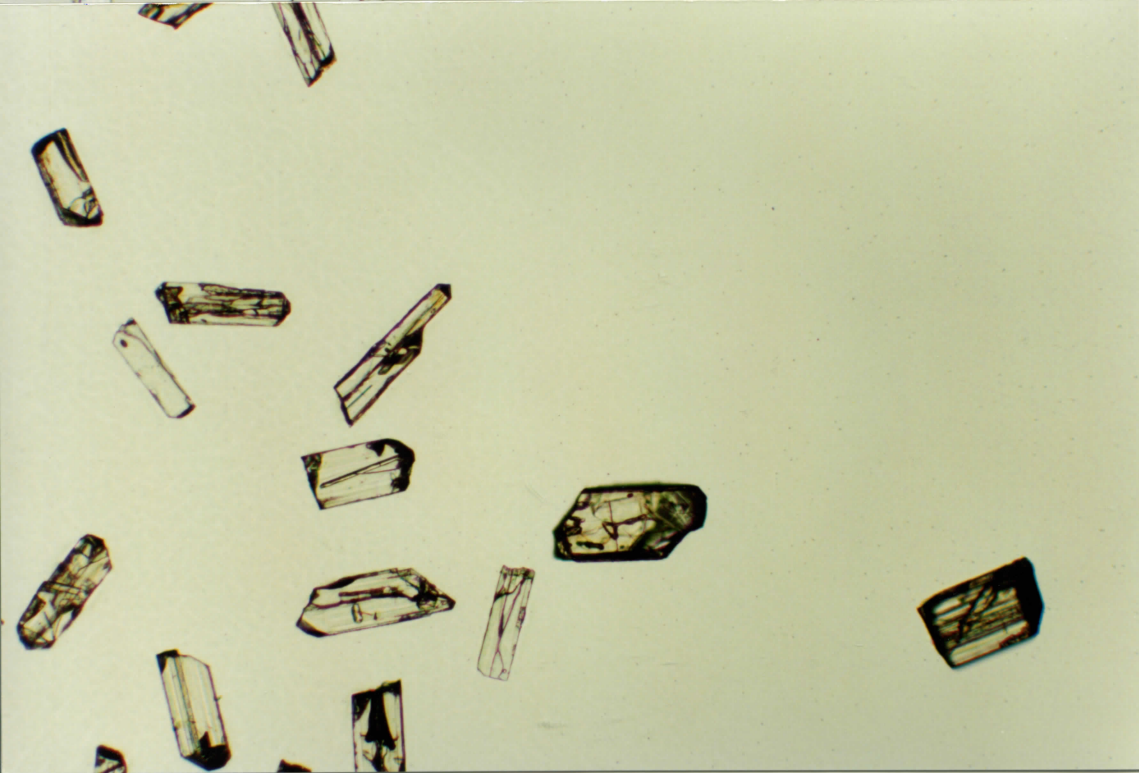
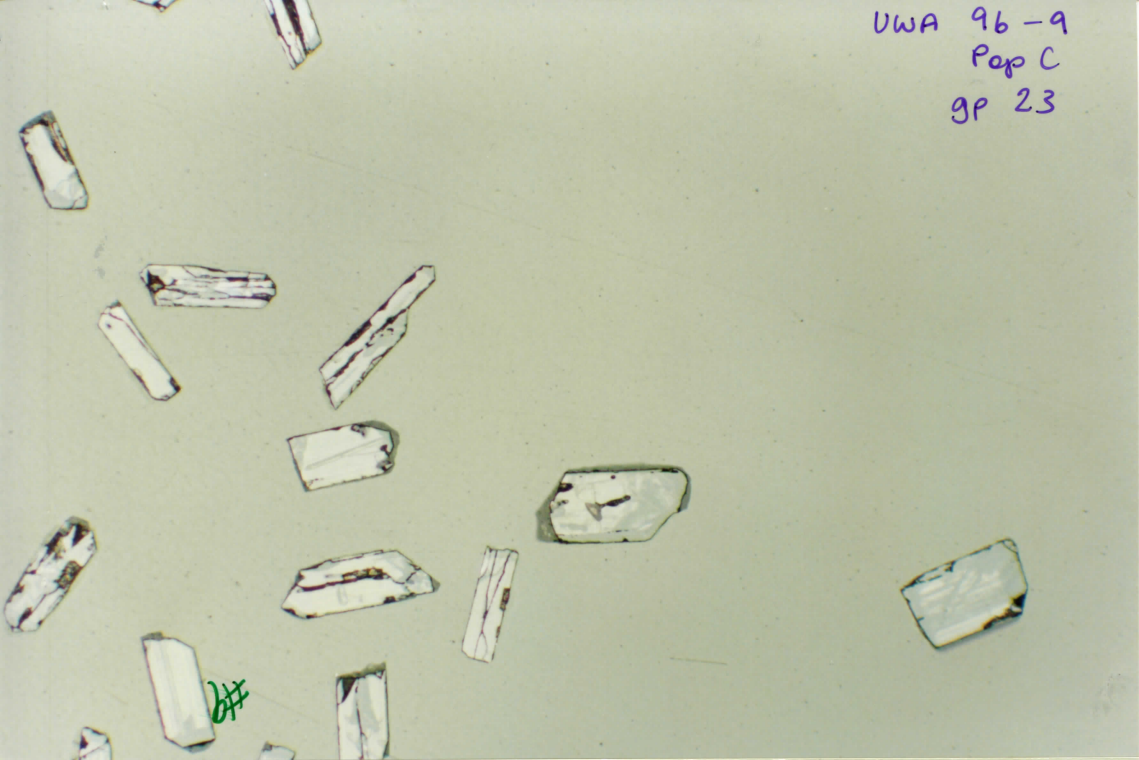
1-5

1-1

1-7

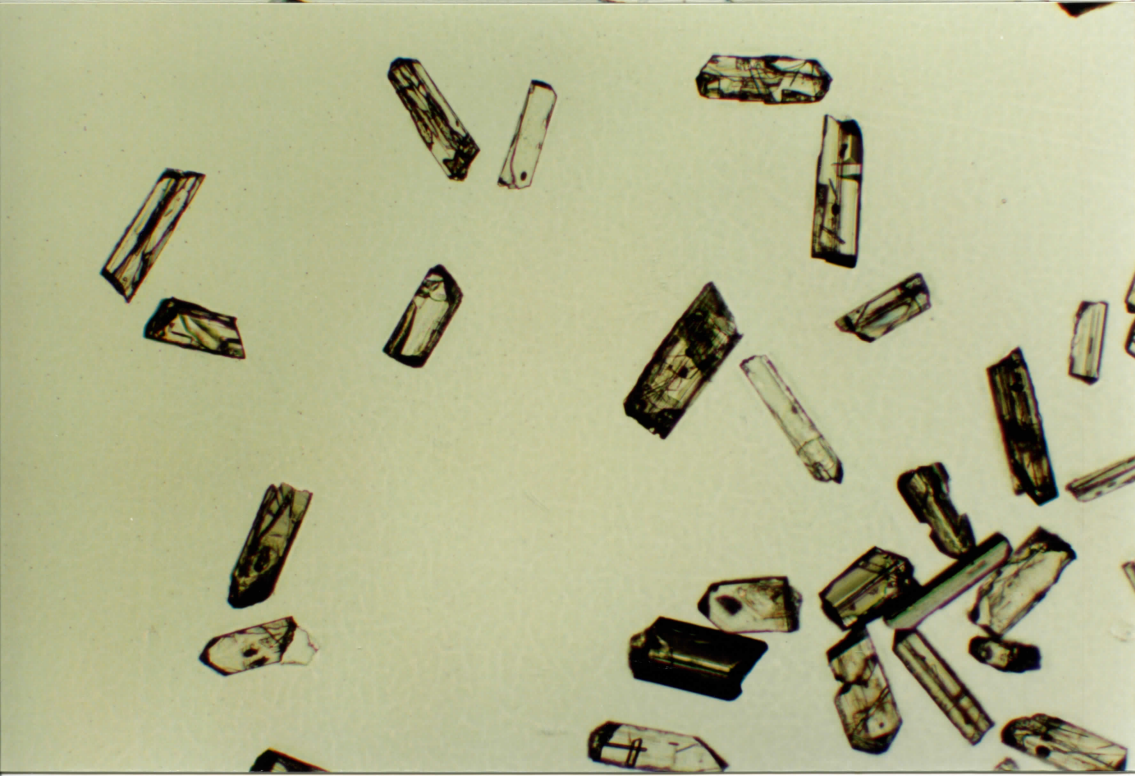


UWA 96-9  
Pop C  
gp 23

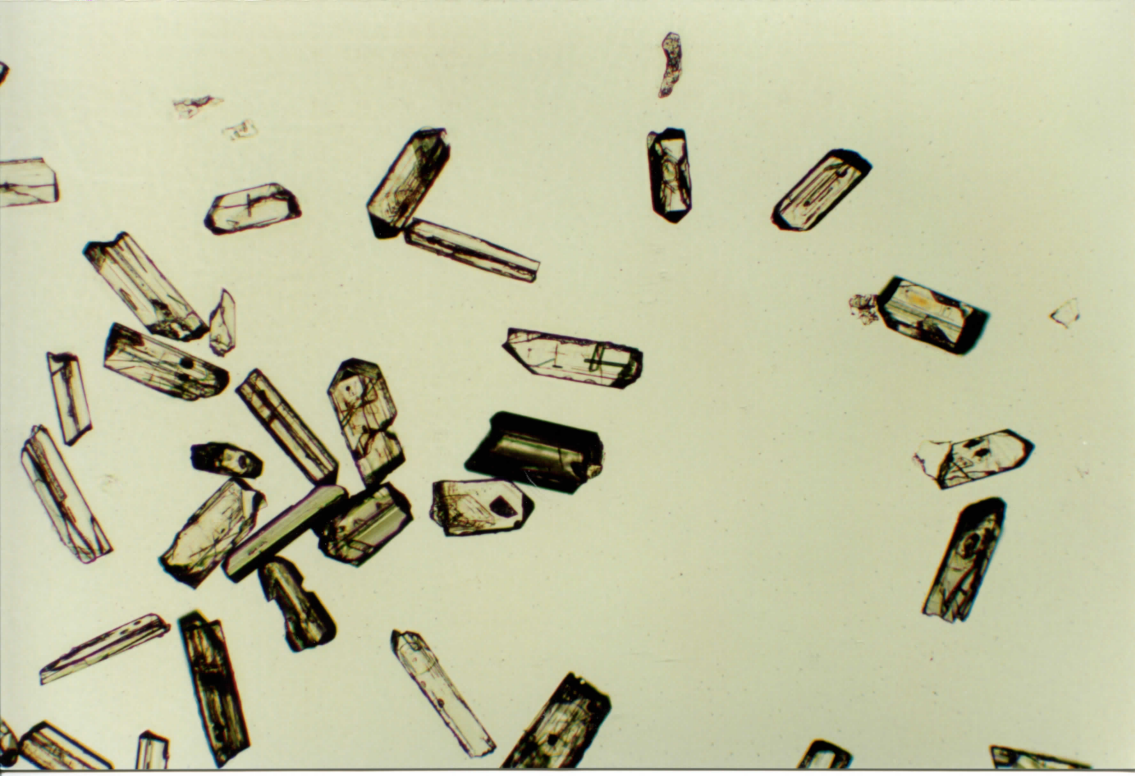
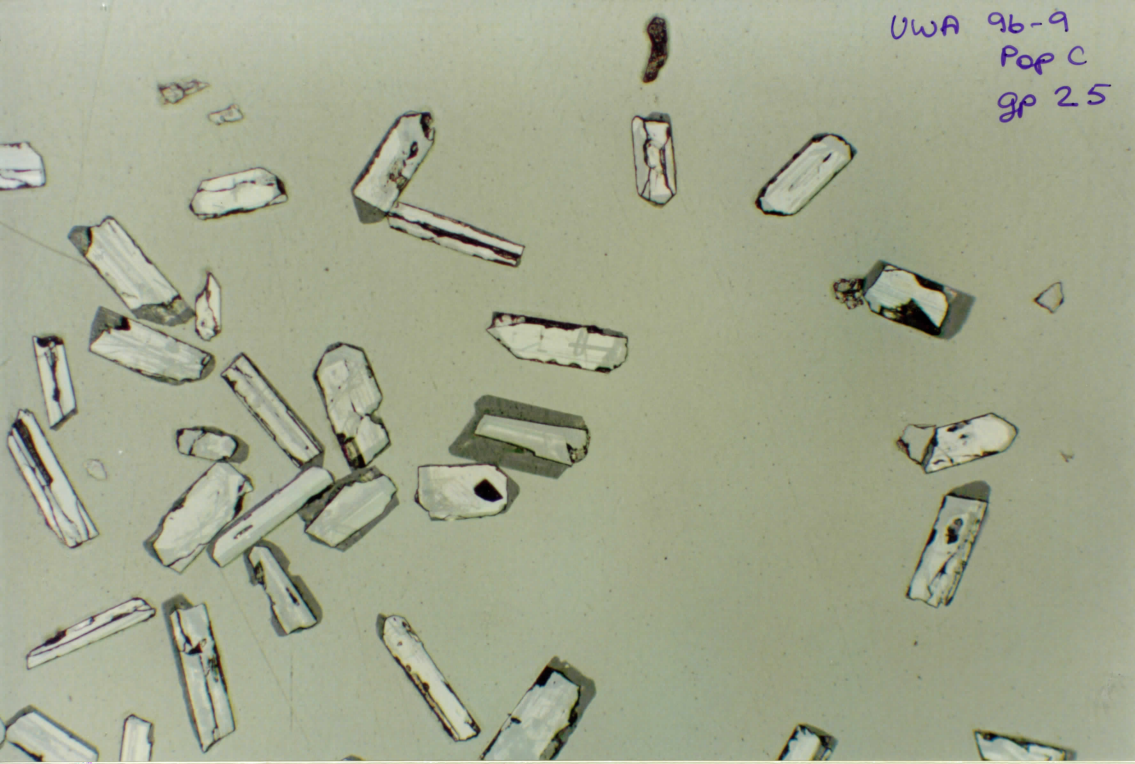




UWA 96-9  
Pop C  
gp 24

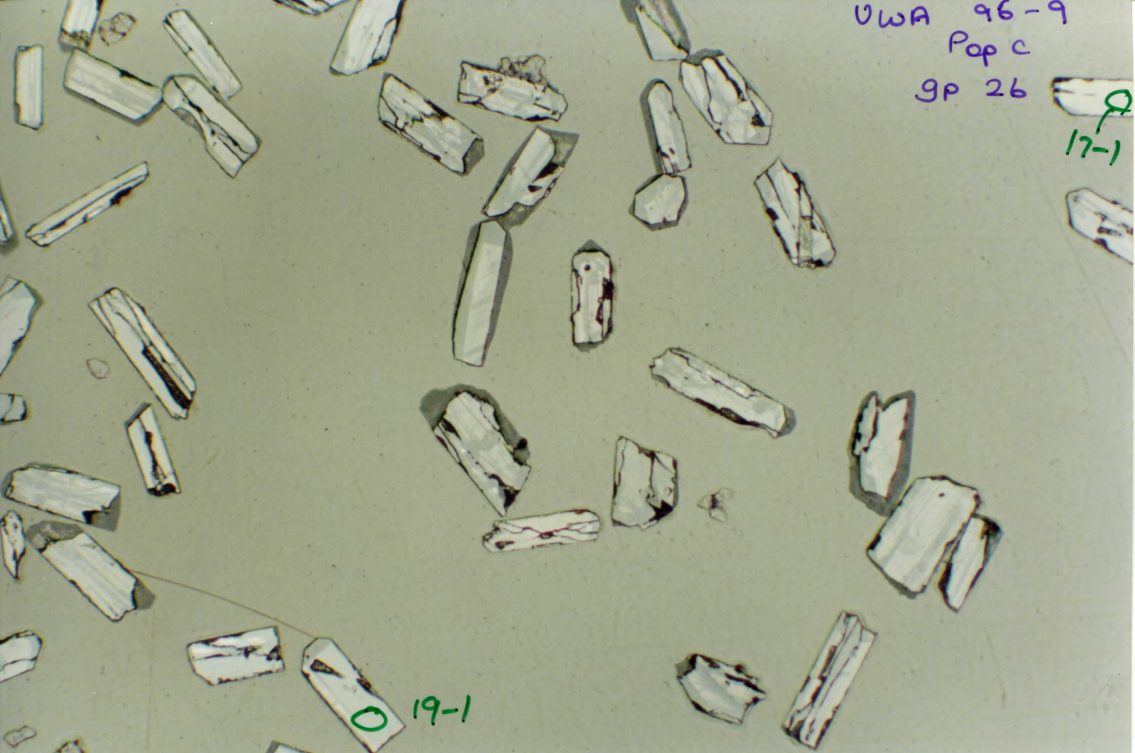


UWA 9b-9  
Pop C  
gp 25

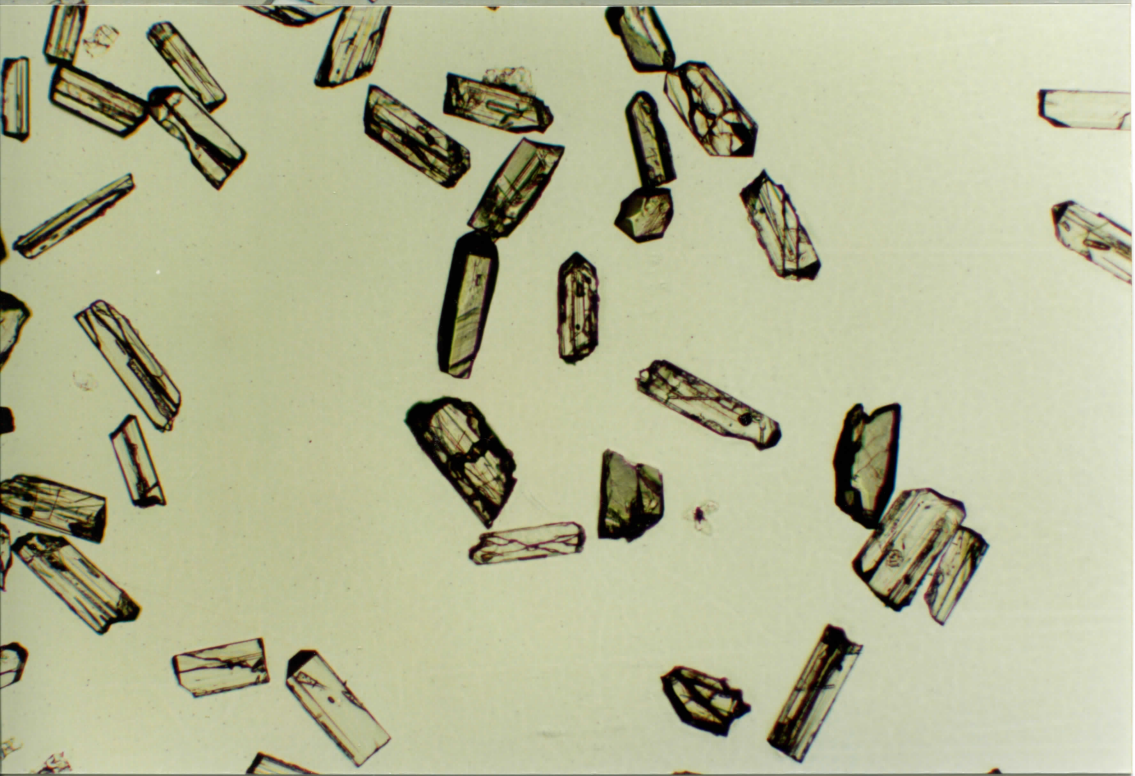


UWA 96-9  
Pop c  
gp 26

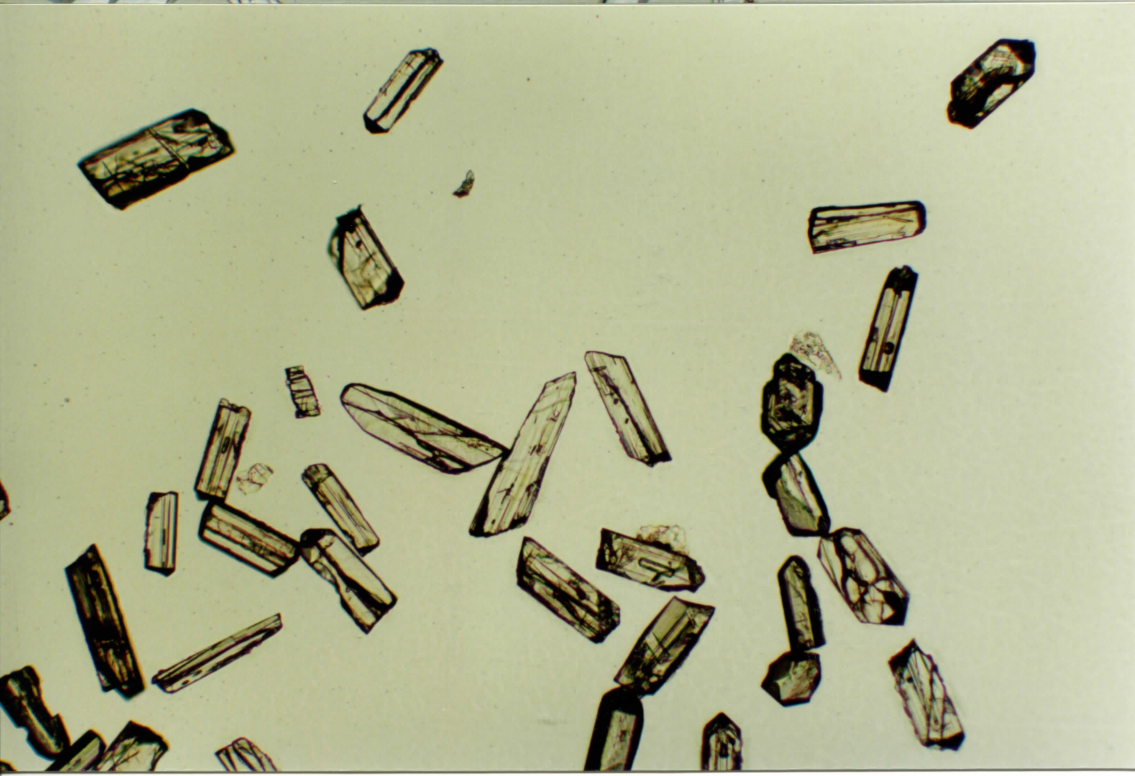
♀  
17-1

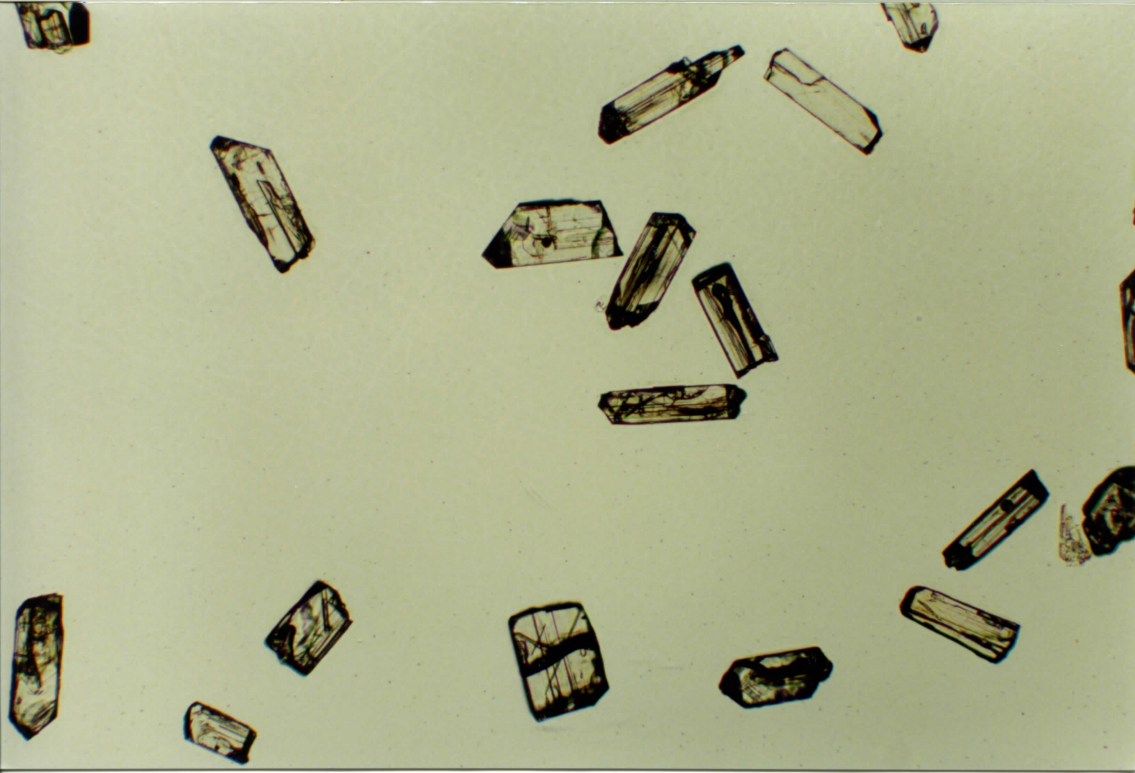
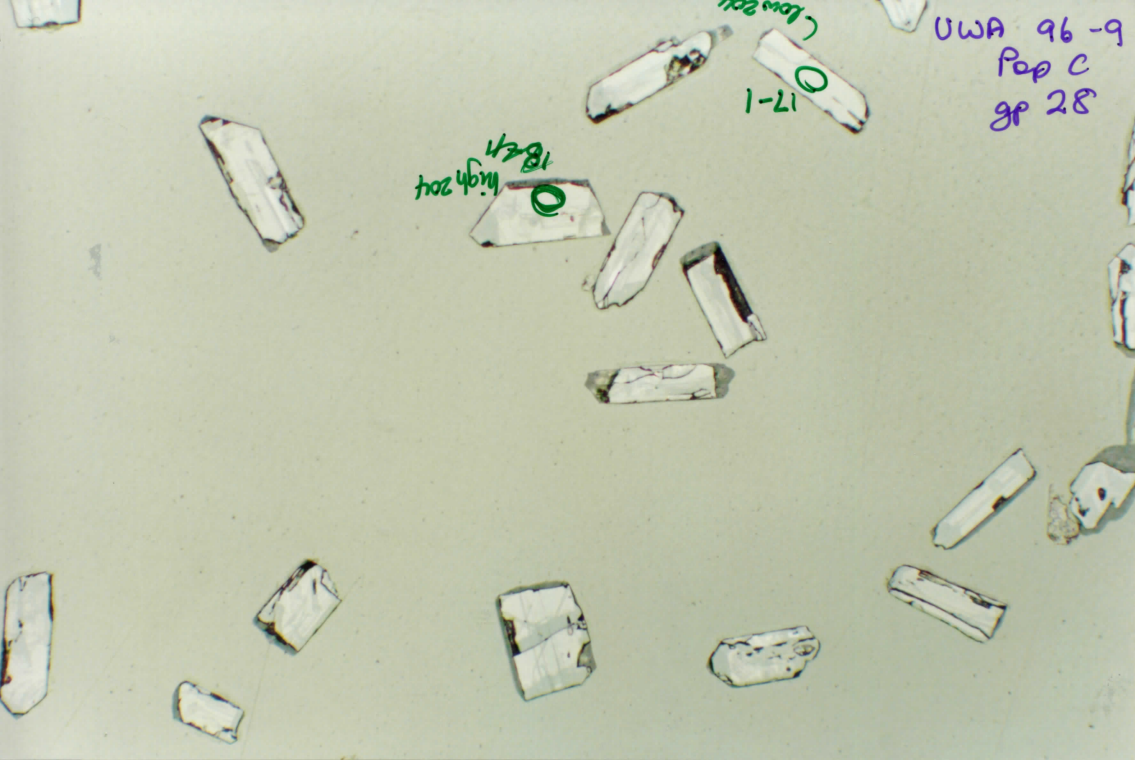


0 19-1



UWA 96-9  
PopC  
9P27

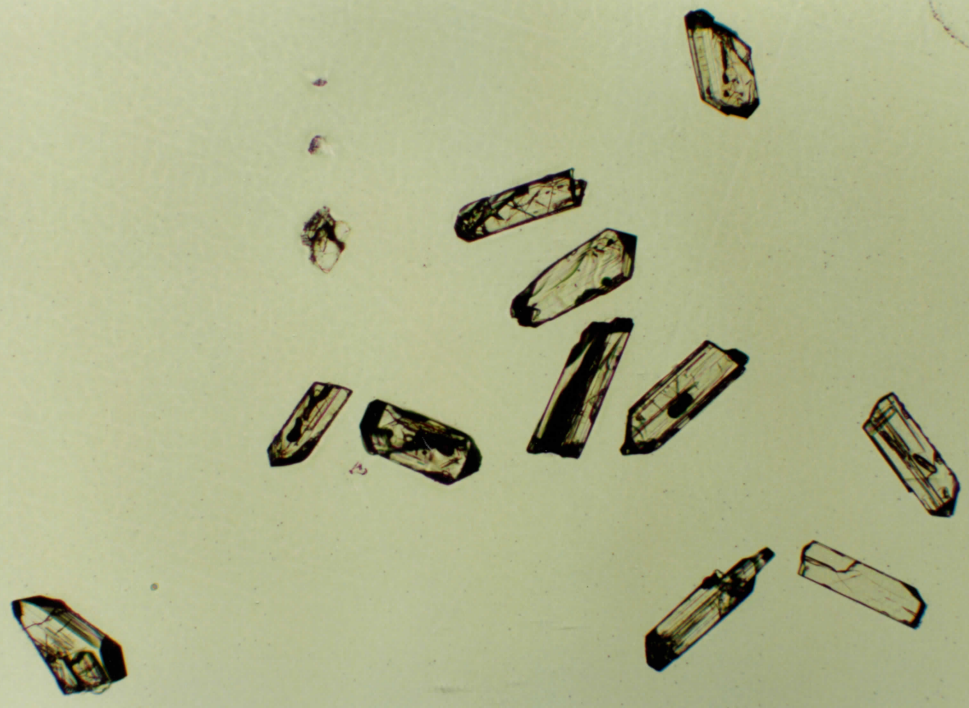
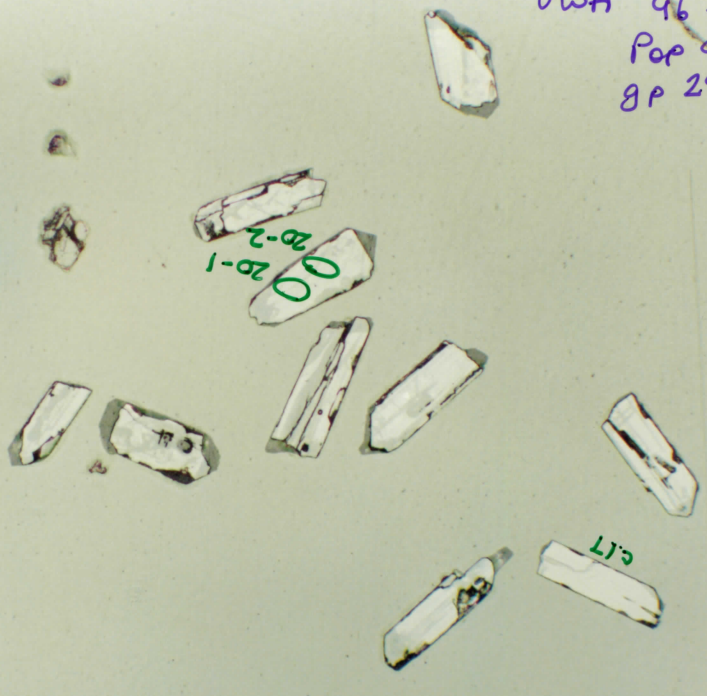




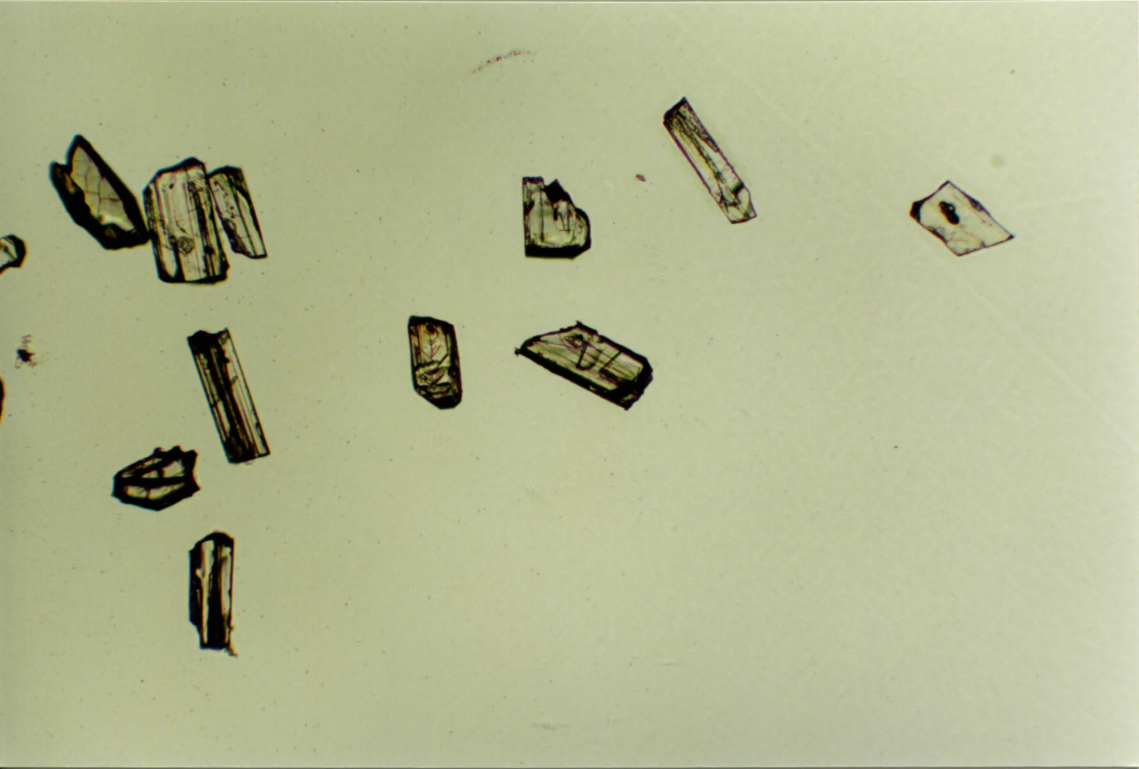
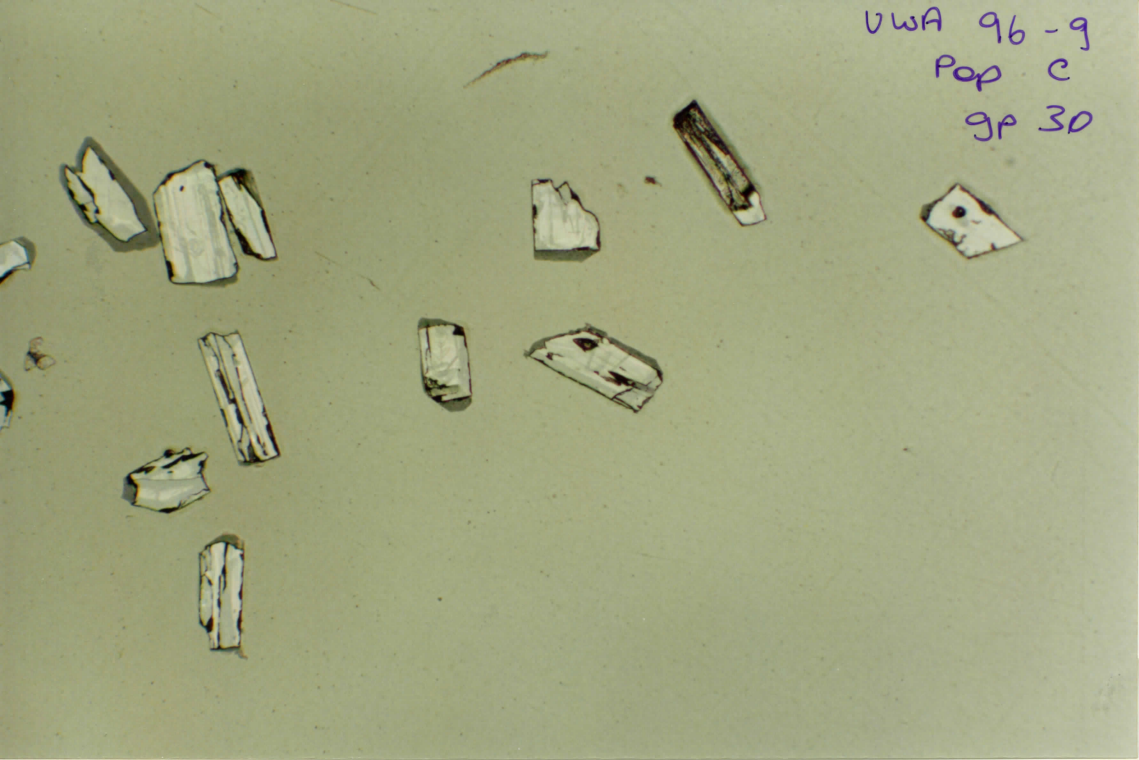
UWA 96-9  
Pop C  
8P 29

20-1  
20-2

175



UWA 96-9  
Pop C  
gp 30



UWA 96-9  
Pap C  
gp 31

19-1

