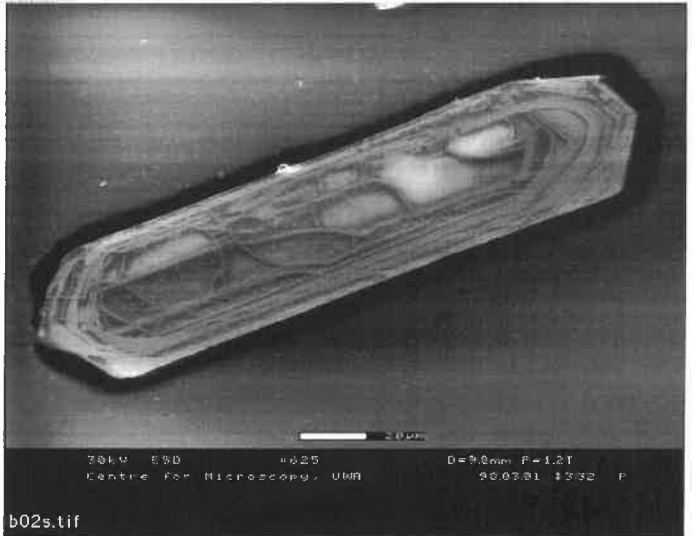
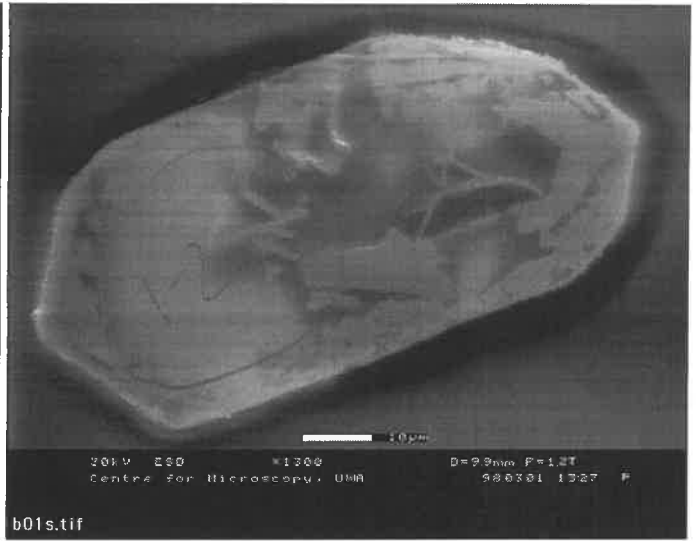
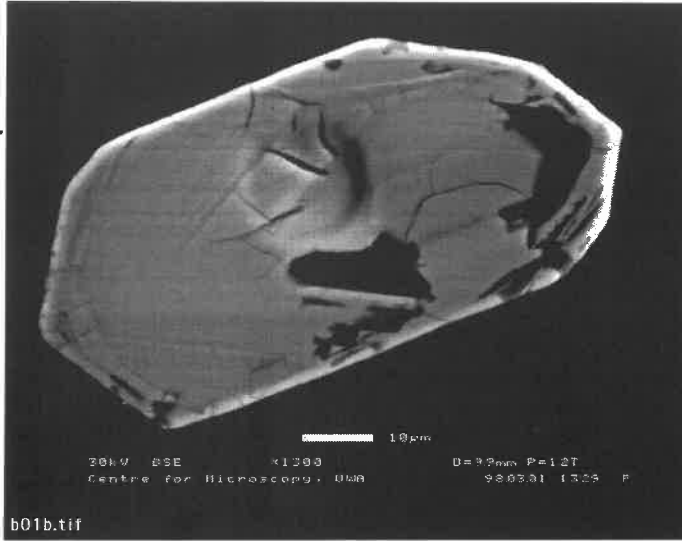


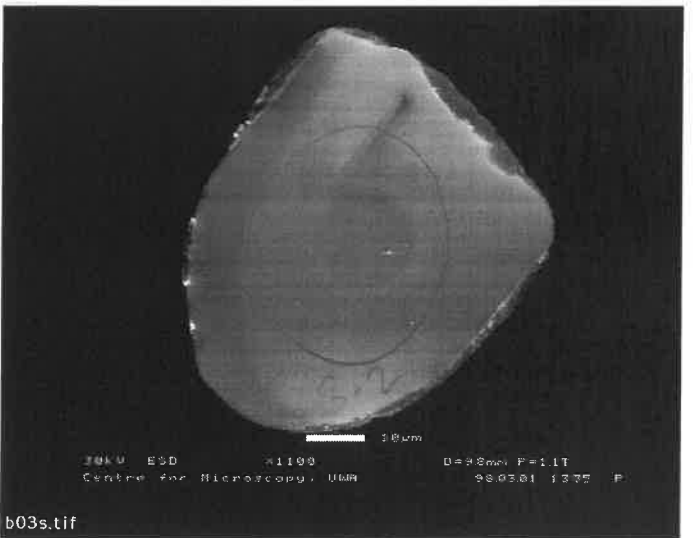
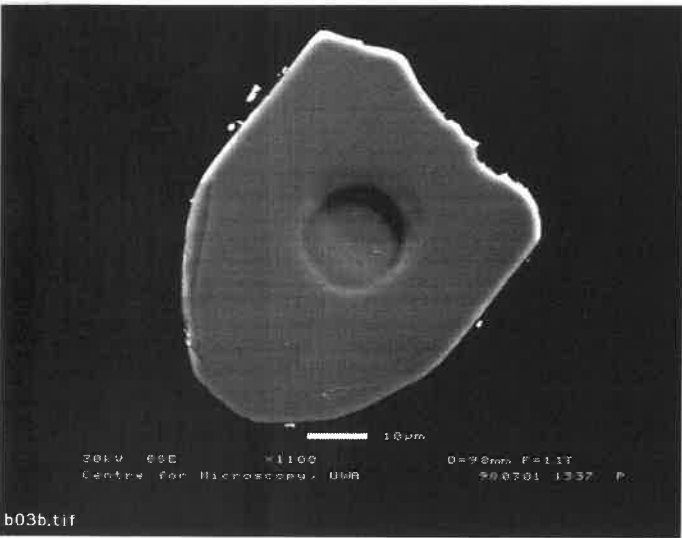
Mount 96-12, Population B ( 1 ) 2. 3.98

2757±5  
85%

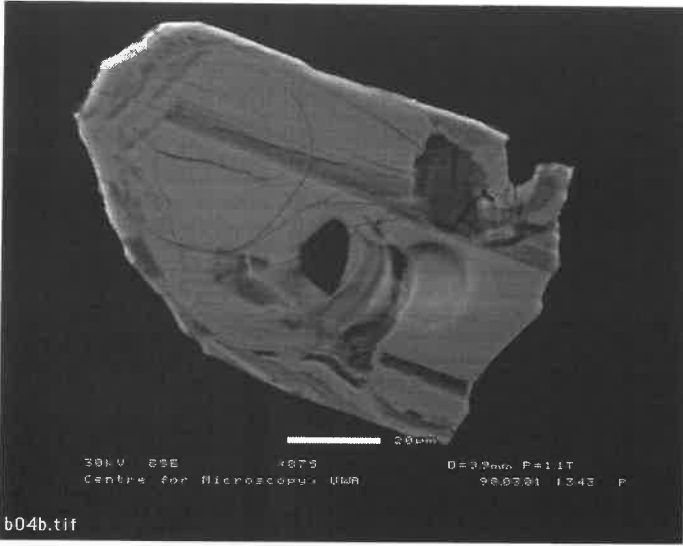
2774±6  
66%



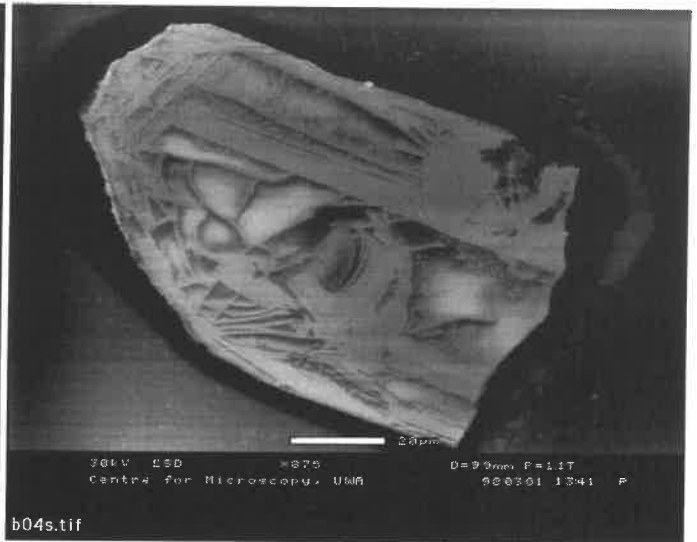
2615±7  
100%  
2629±7  
98%



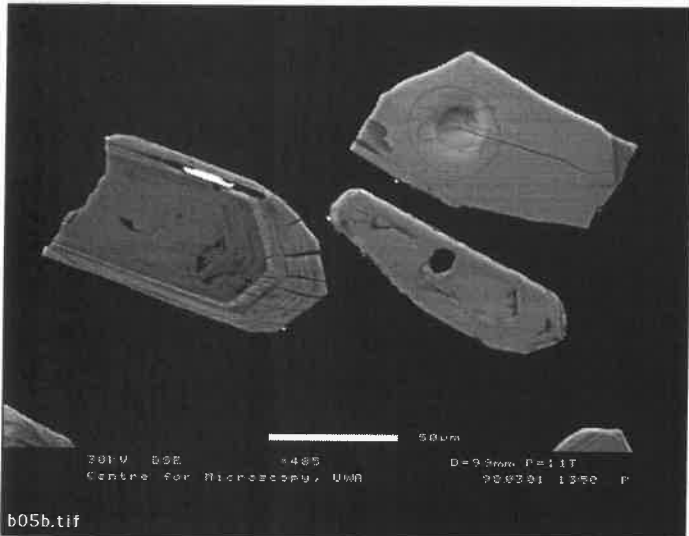
Mount 96-12, Population B ( 2 ) 2. 3.98



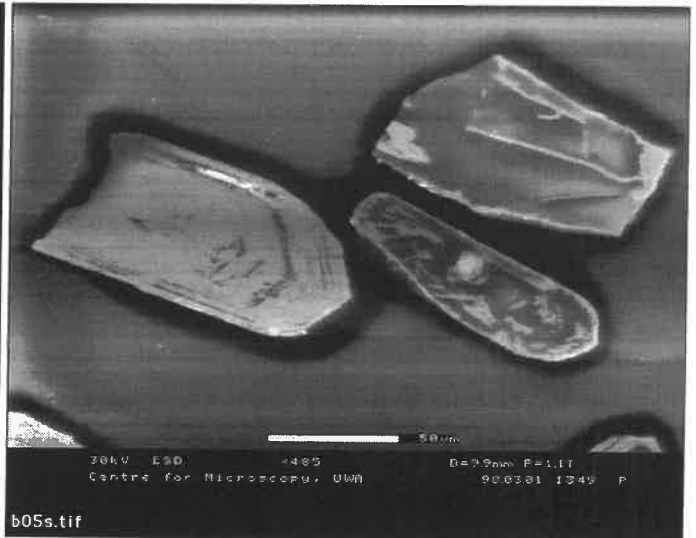
b04b.tif



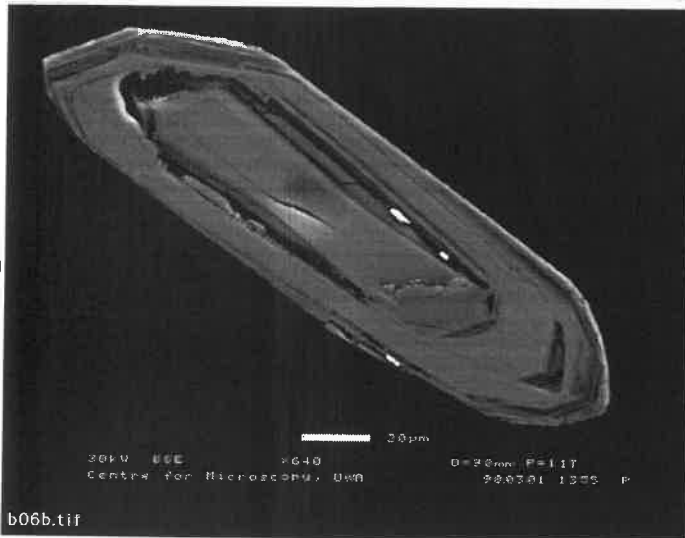
b04s.tif



b05b.tif



b05s.tif



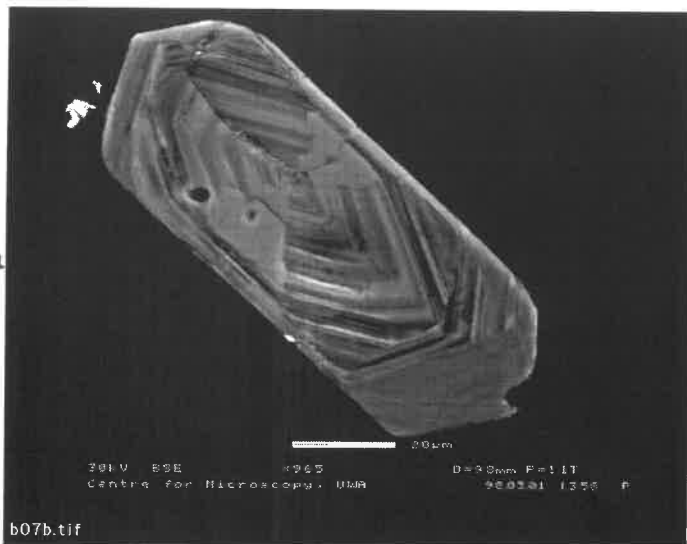
b06b.tif



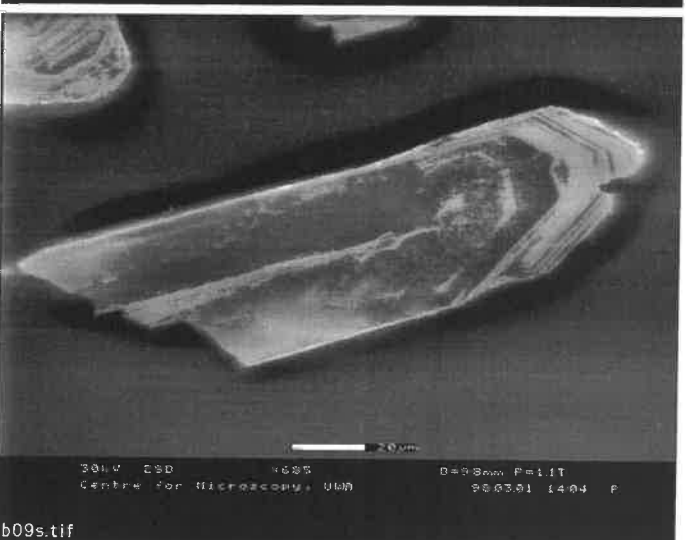
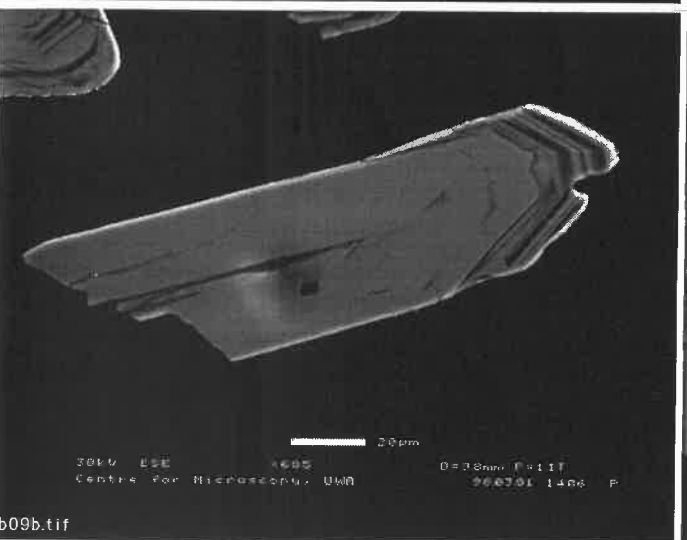
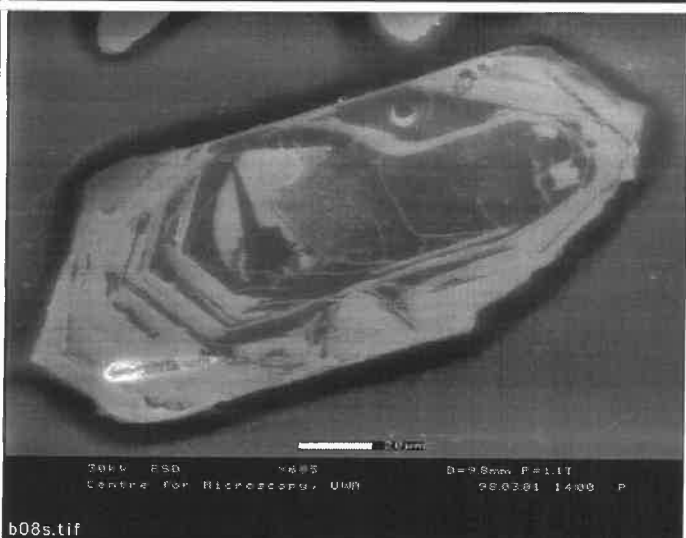
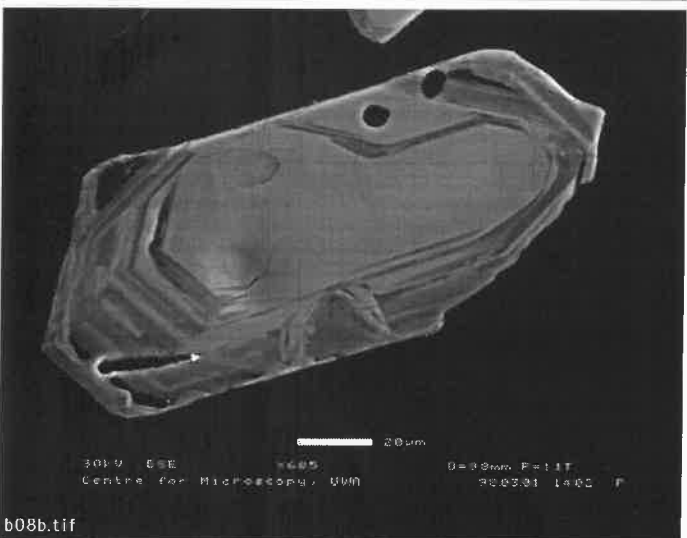
b06s.tif

Mount 96-12, Population B ( 3 ) 2. 3.98

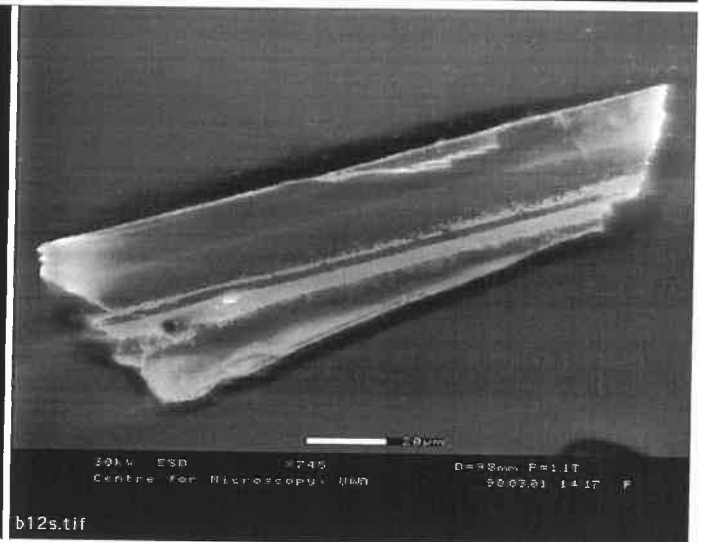
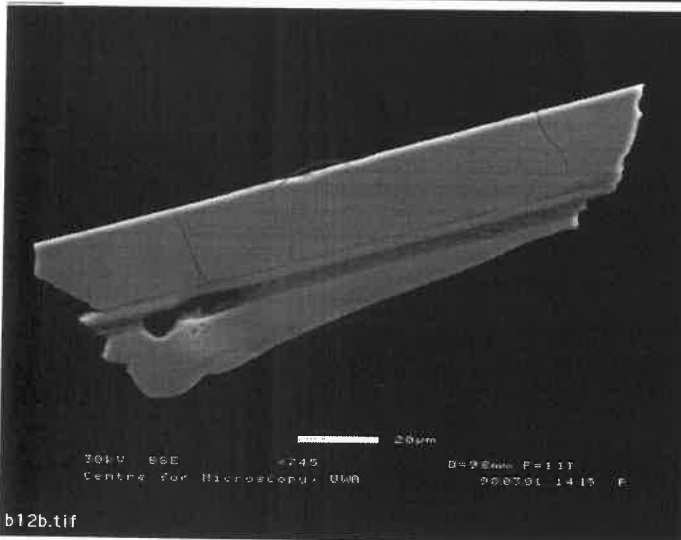
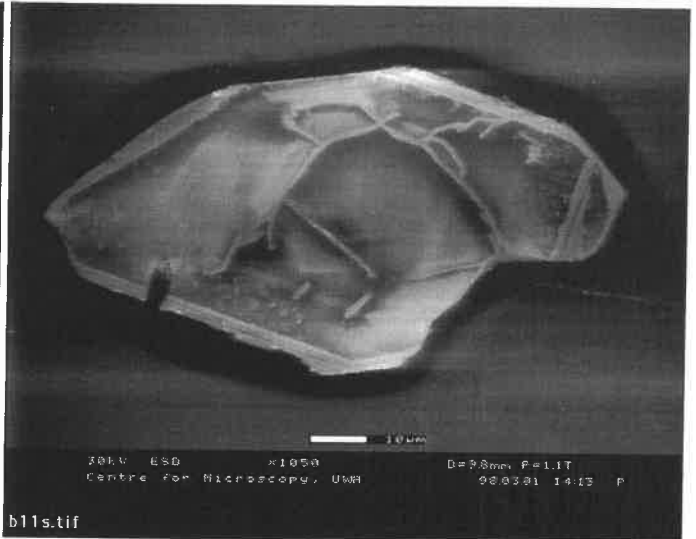
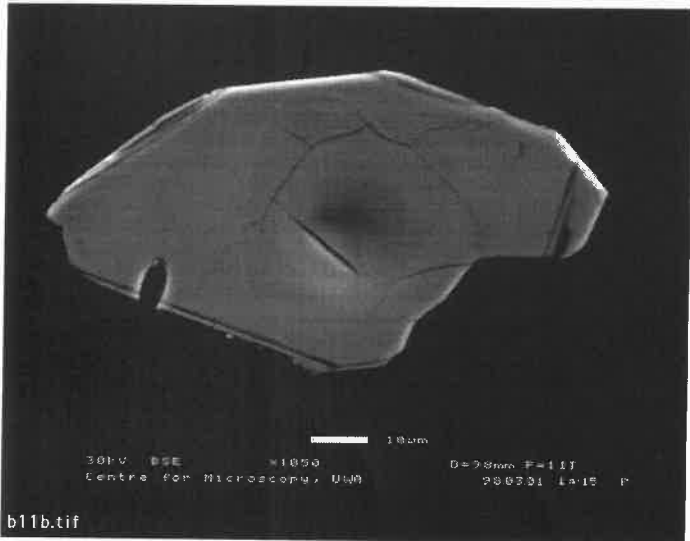
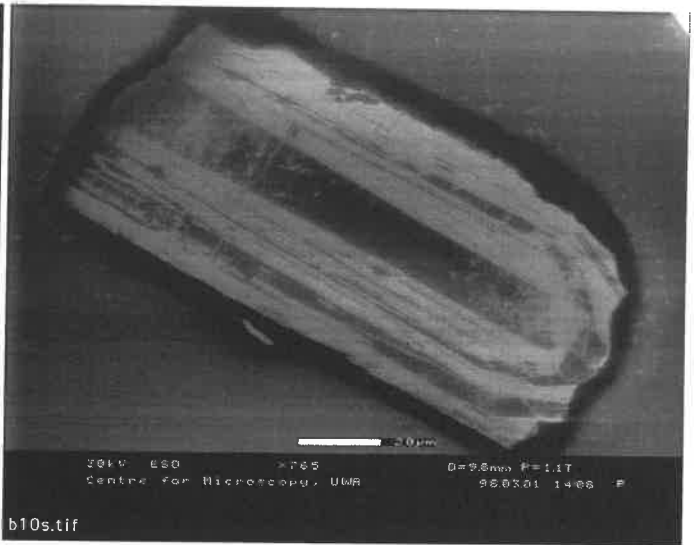
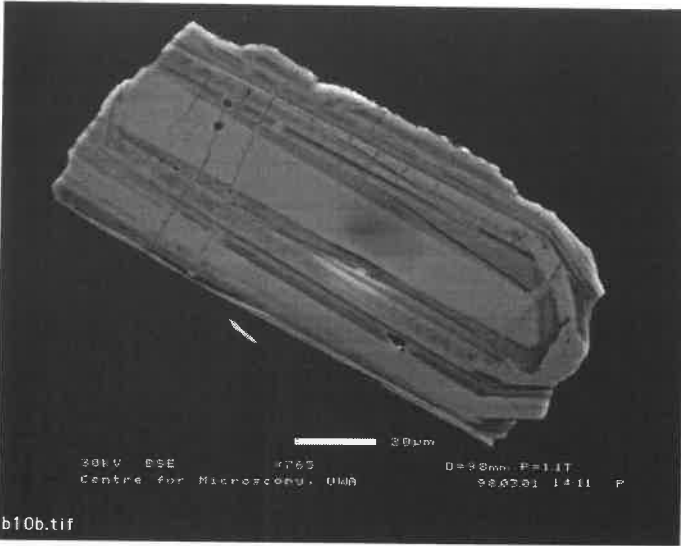
2727±21  
57%



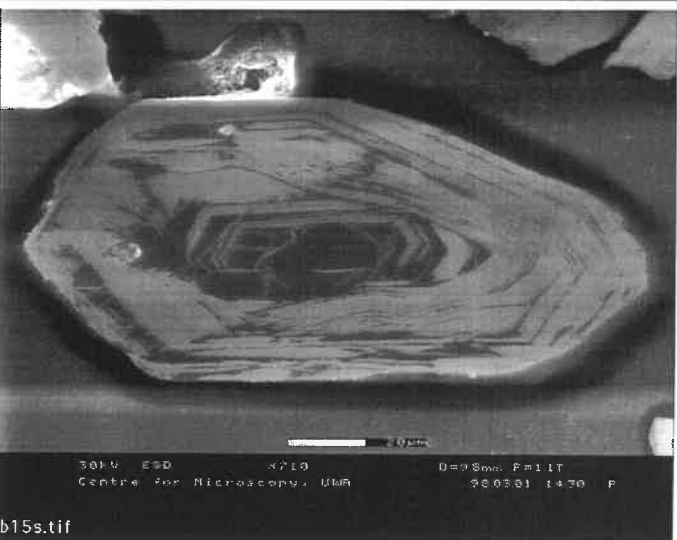
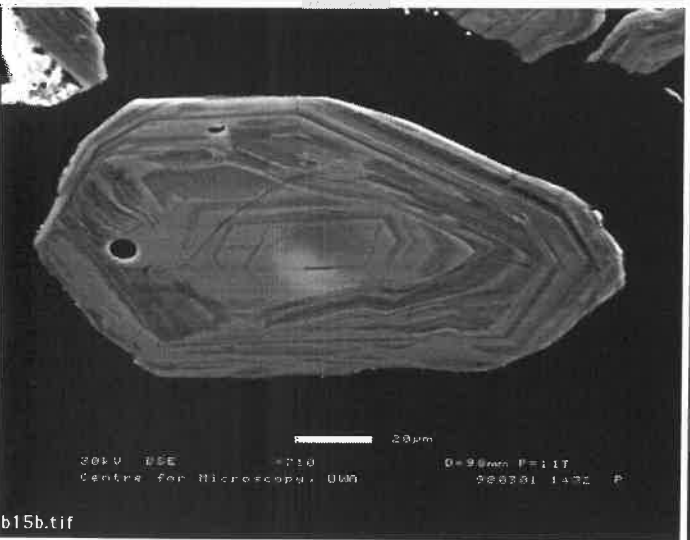
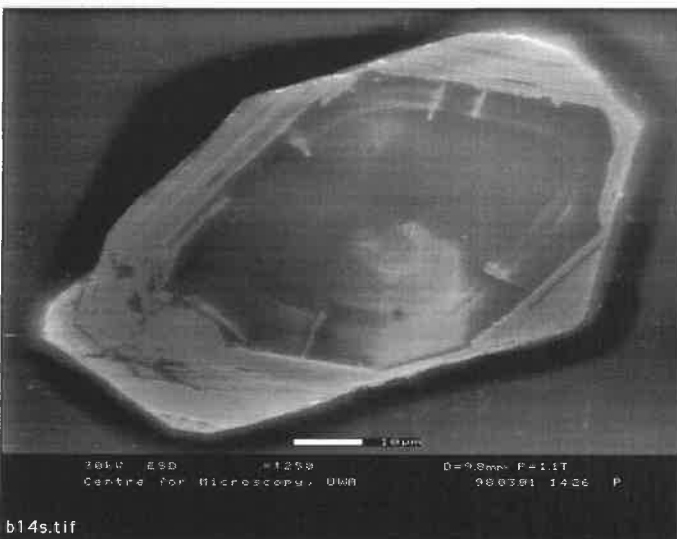
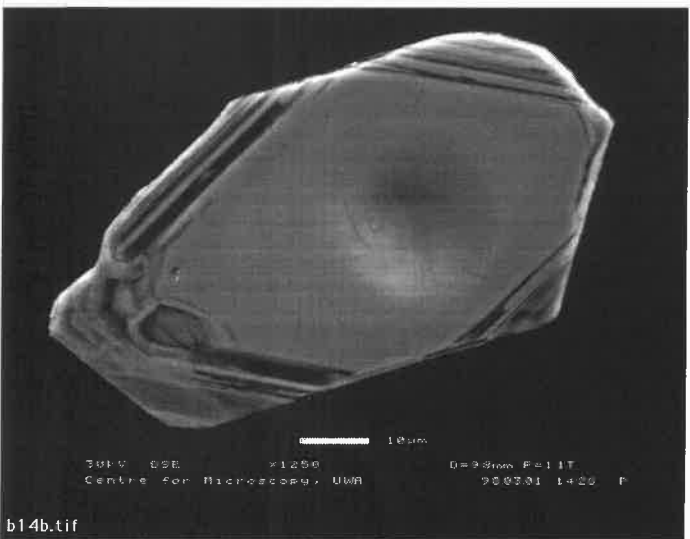
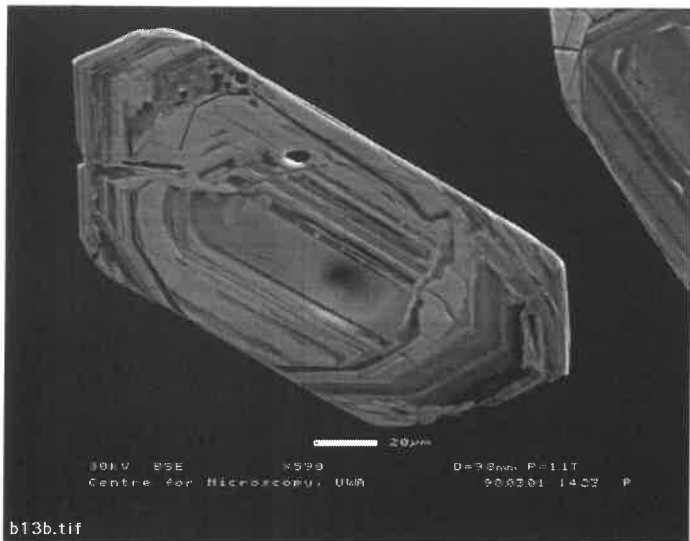
2973±8  
59%



Mount 96-12, Population B ( 4 ) 2. 3.98

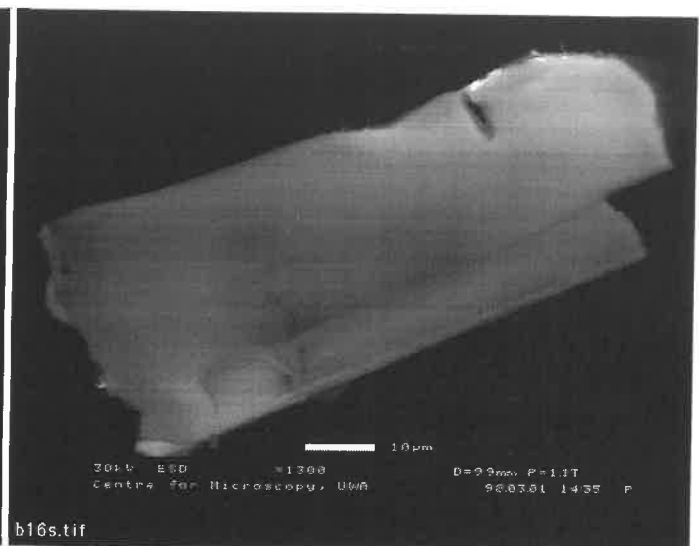
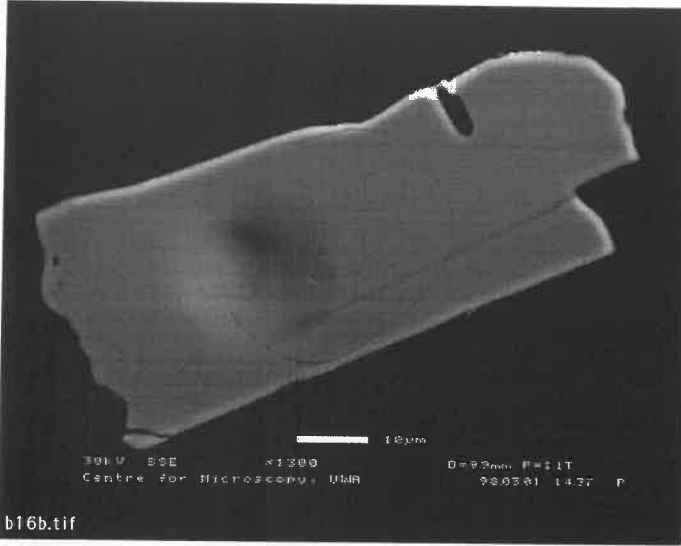


Mount 96-12, Population B ( 5 ) 2. 3.98



Mount 96-12, Population B ( 6 ) 2. 3.98

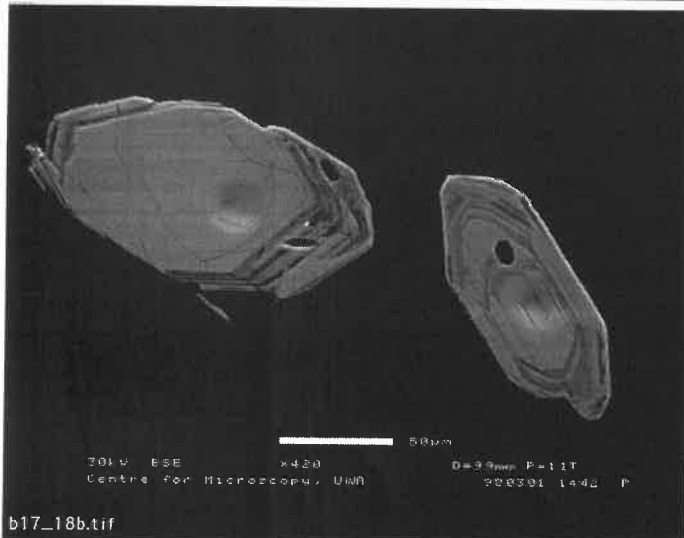
2723±10  
80%  
2715±13  
63%



b16b.tif

b16s.tif

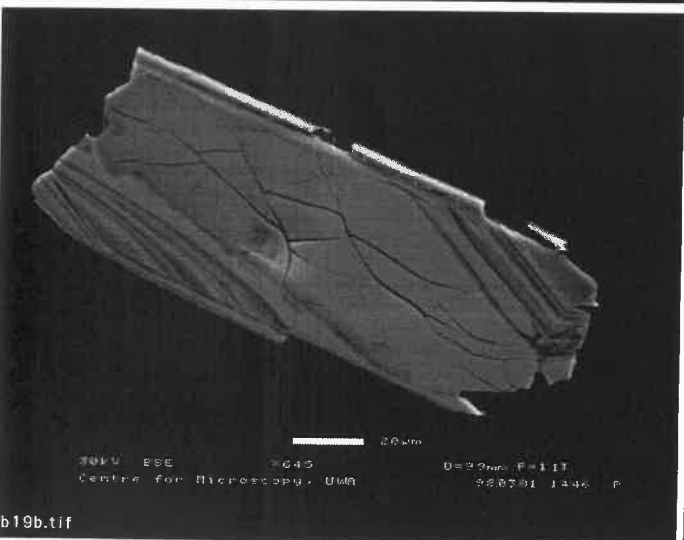
2727±9  
98%  
2741±8  
98%



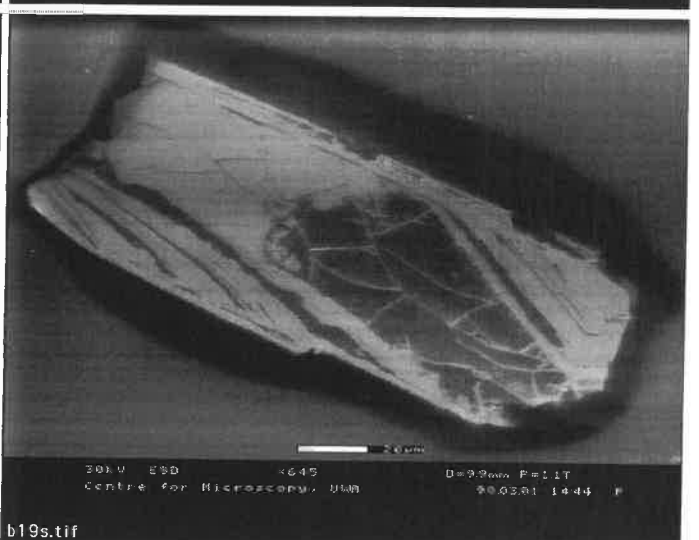
b17\_18b.tif



b17\_18s.tif



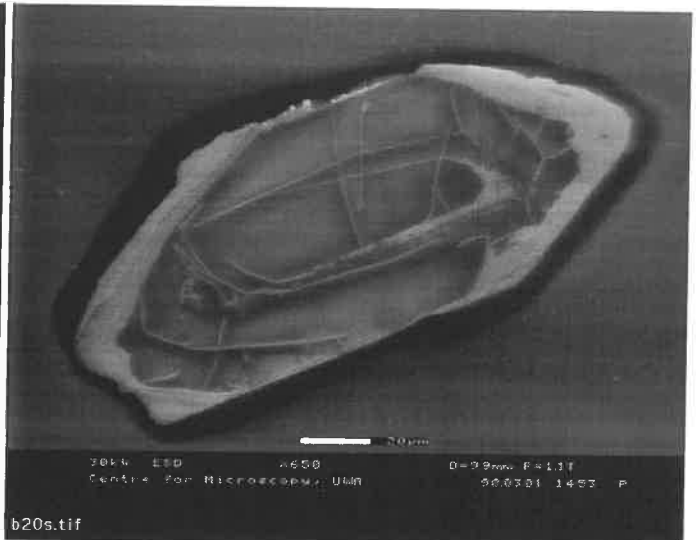
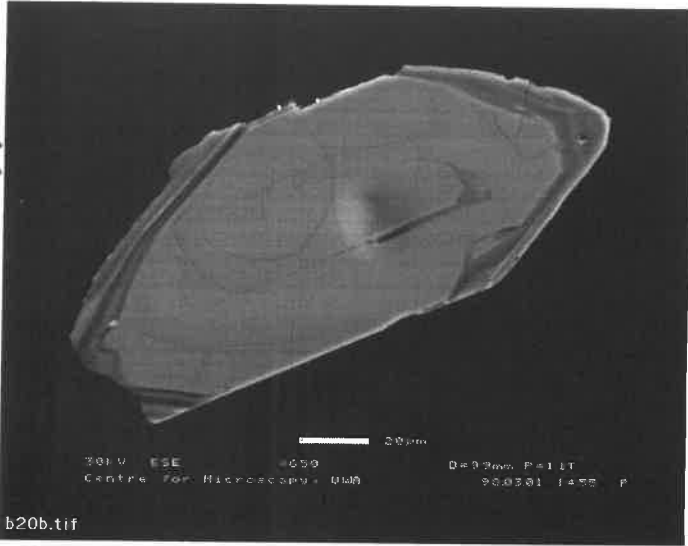
b19b.tif



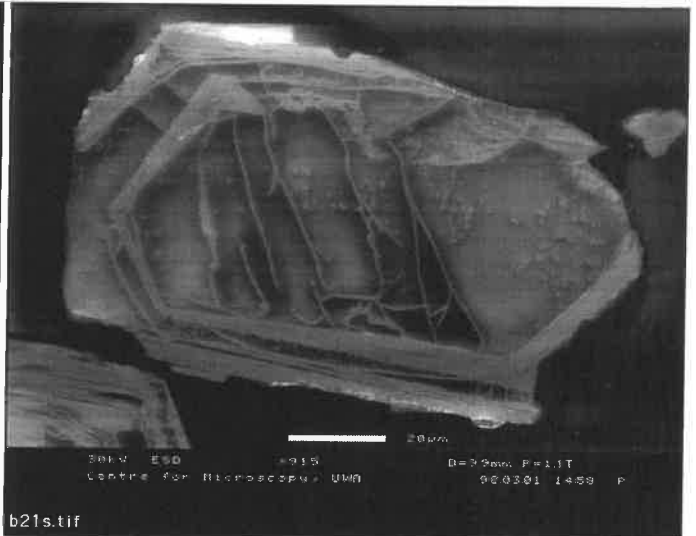
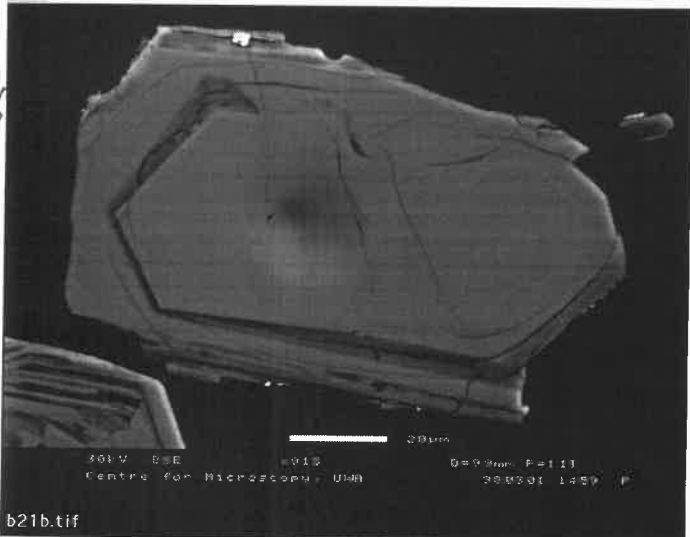
b19s.tif

Mount 96-12, Population B ( 7 ) 2. 3.98

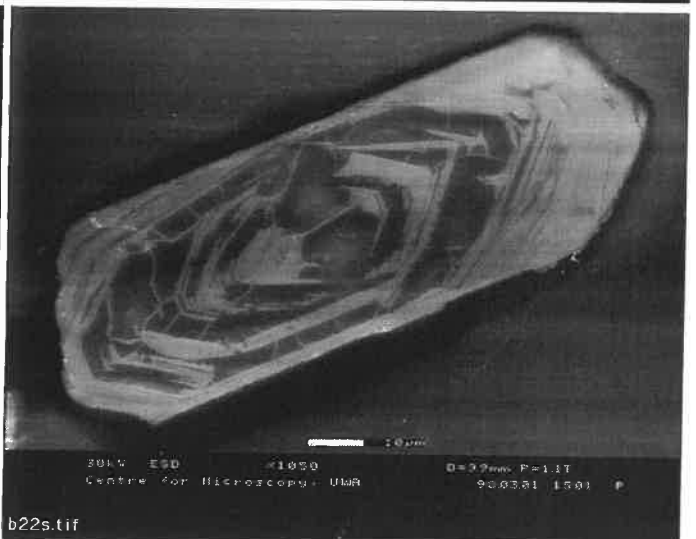
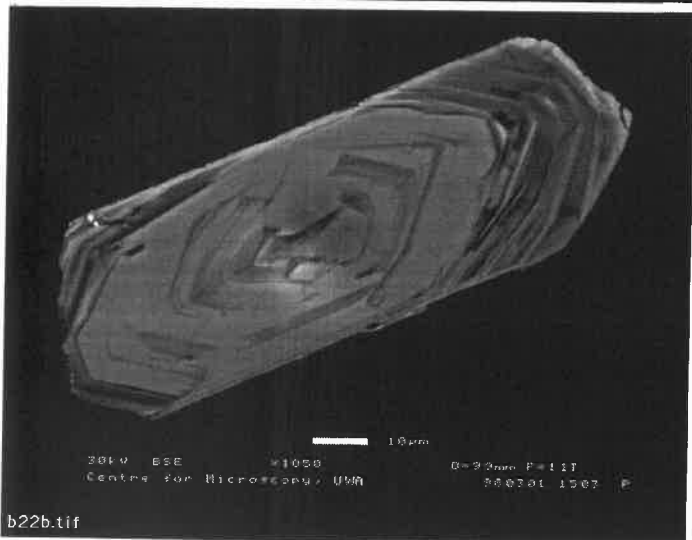
2727±9  
7%  
2735±9  
98%



2979±6  
87%  
2997±8  
96%

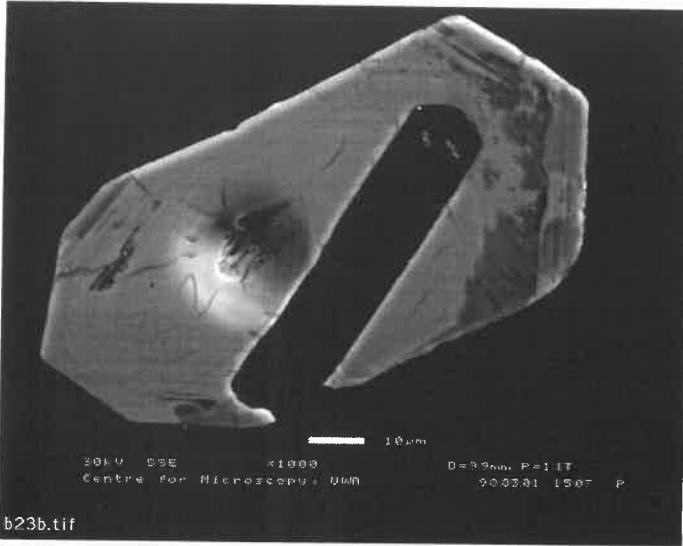


2720±11  
78%

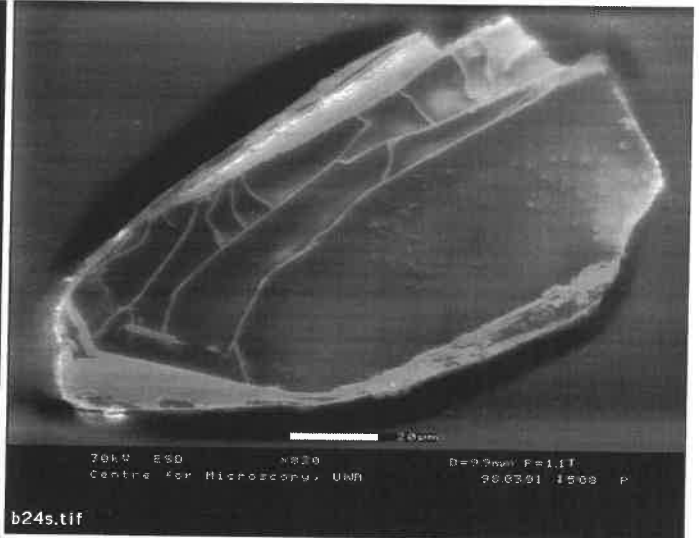
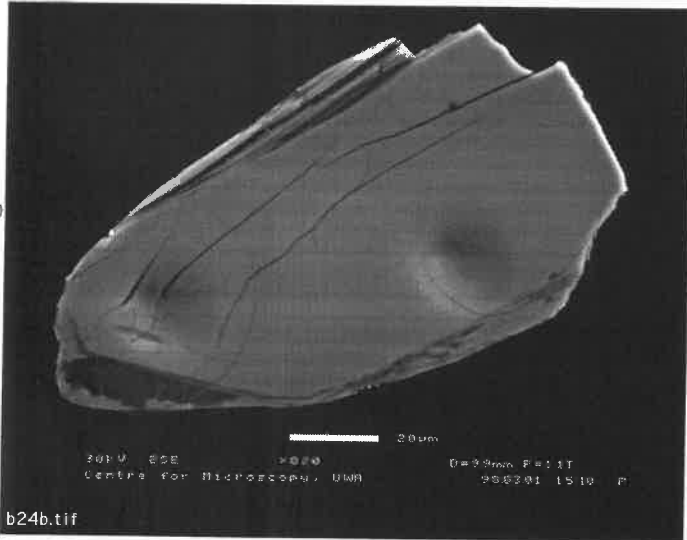


Mount 96-12, Population B ( 8 ) 2. 3.98

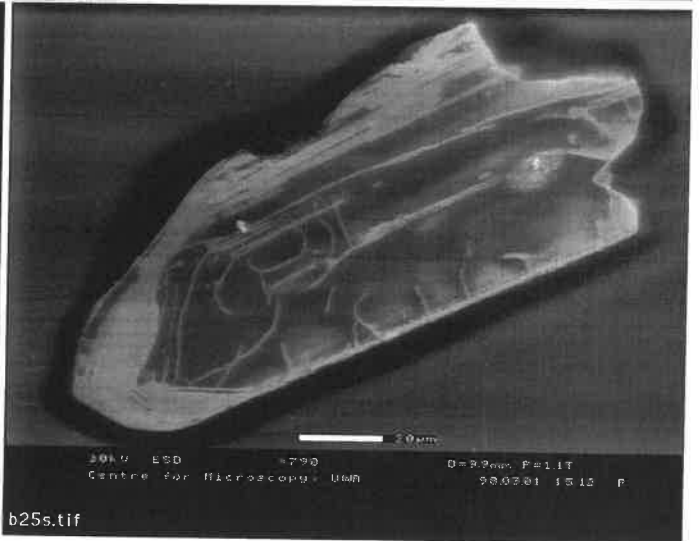
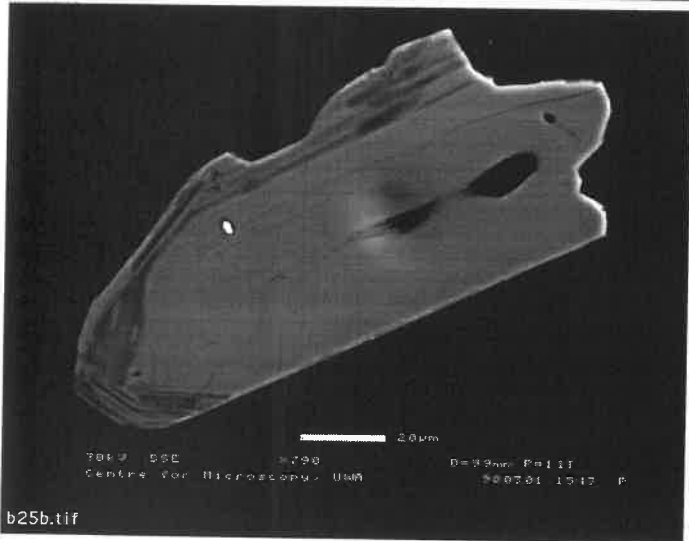
27854  
96%  
27874  
98%



278438  
276858  
95%  
278077  
97%  
278938  
97%



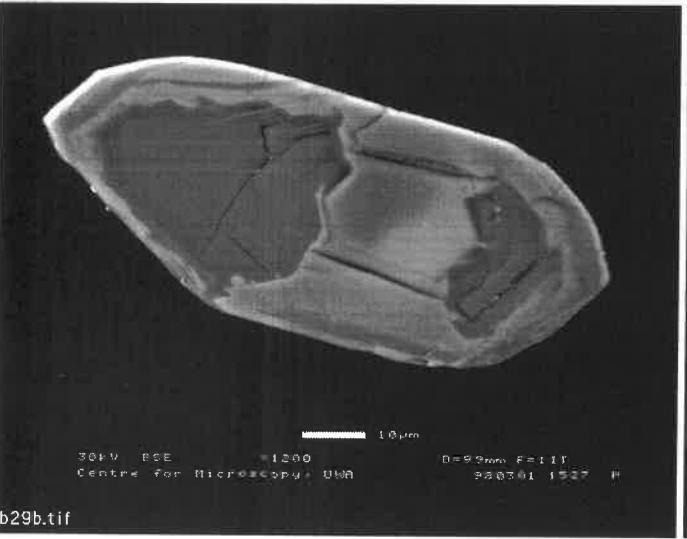
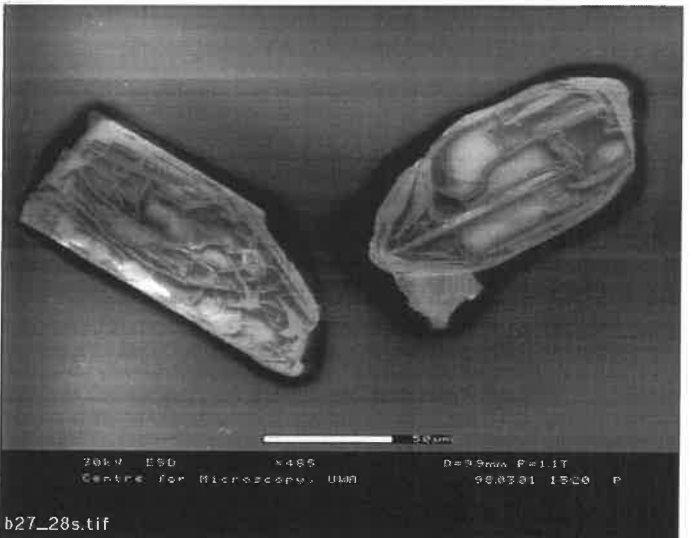
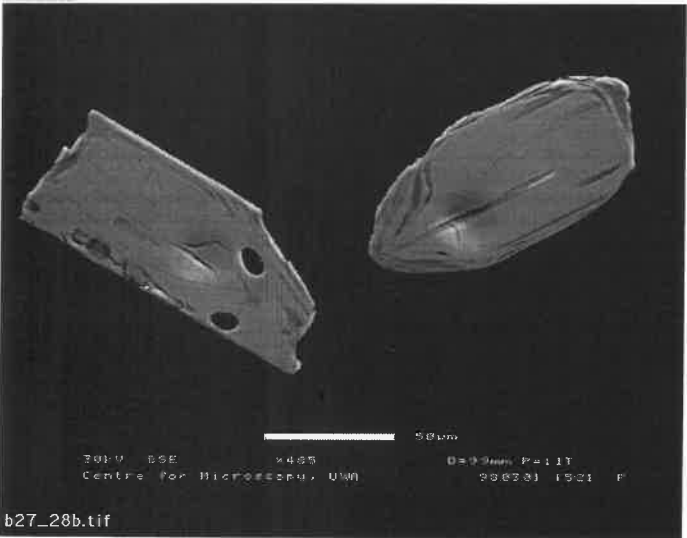
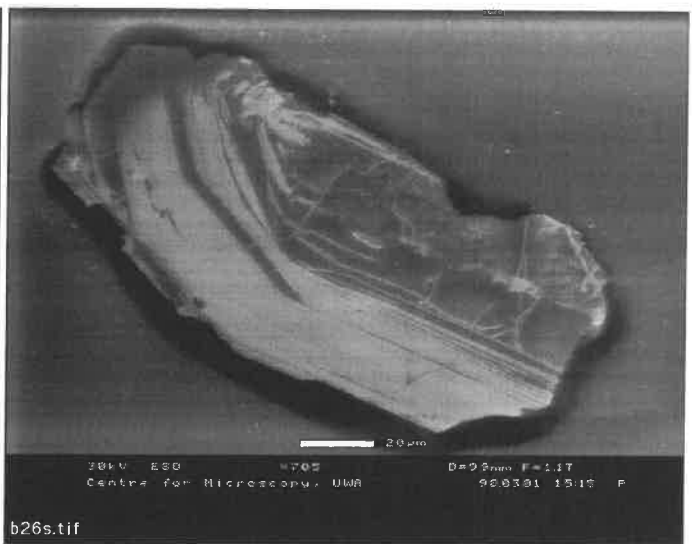
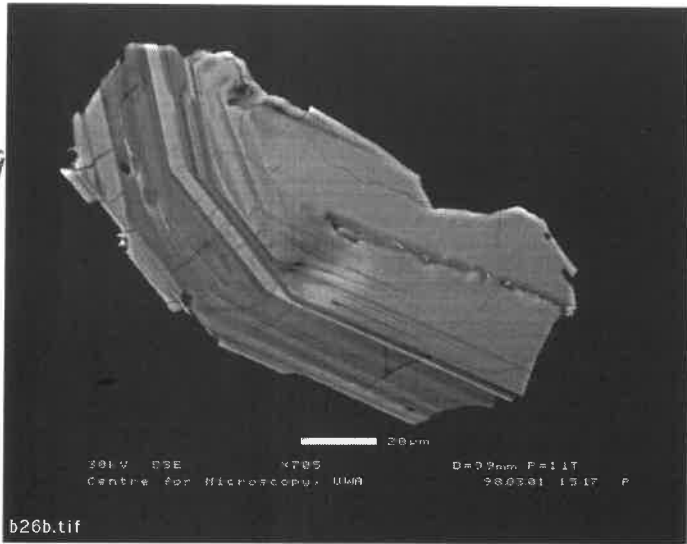
279213  
77%  
279211  
70%





Mount 96-12, Population B ( 9 ) 2. 3.98

2838±19  
47%  
2976±12  
72%



# 29 NO GOOD  
V. HIGH 204