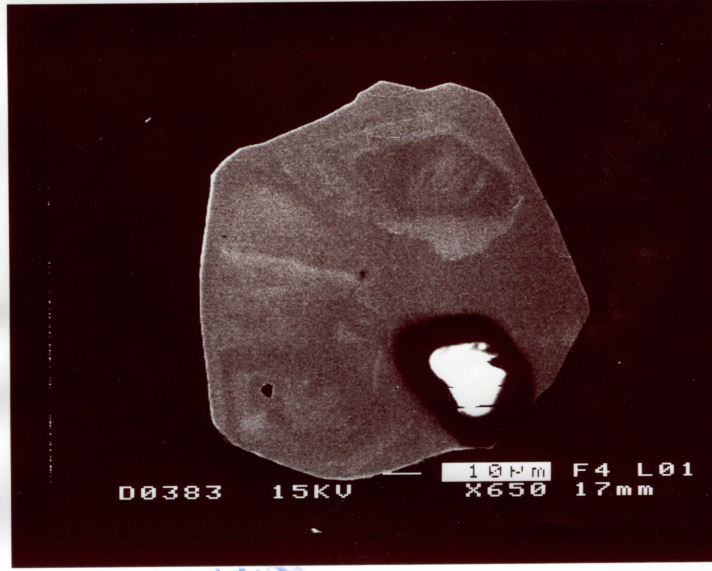


D0383 15KV — 10µm F4 L01
X600 17mm

ap001 (CL)

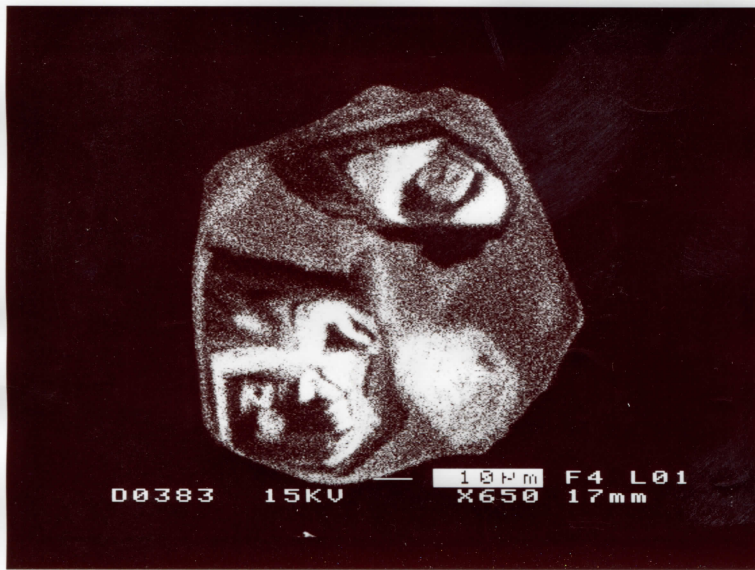
96-24A:1



D0383 15KV — 10µm F4 L01
X650 17mm

ap.003 (BSEL)

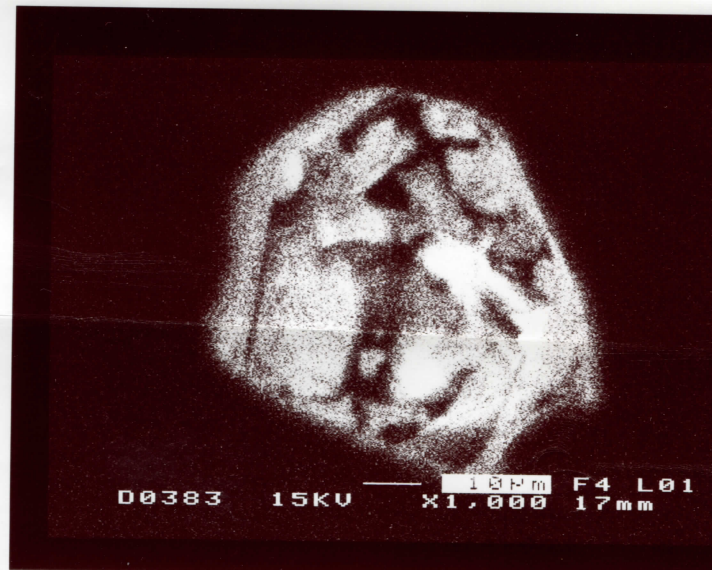
96-24A:2



D0383 15KV — 10µm F4 L01
X650 17mm

ap 004 (CL)

96-24A:2



D0383 15KV — 10µm F4 L01
X1,000 17mm

ap002

96-24:6.