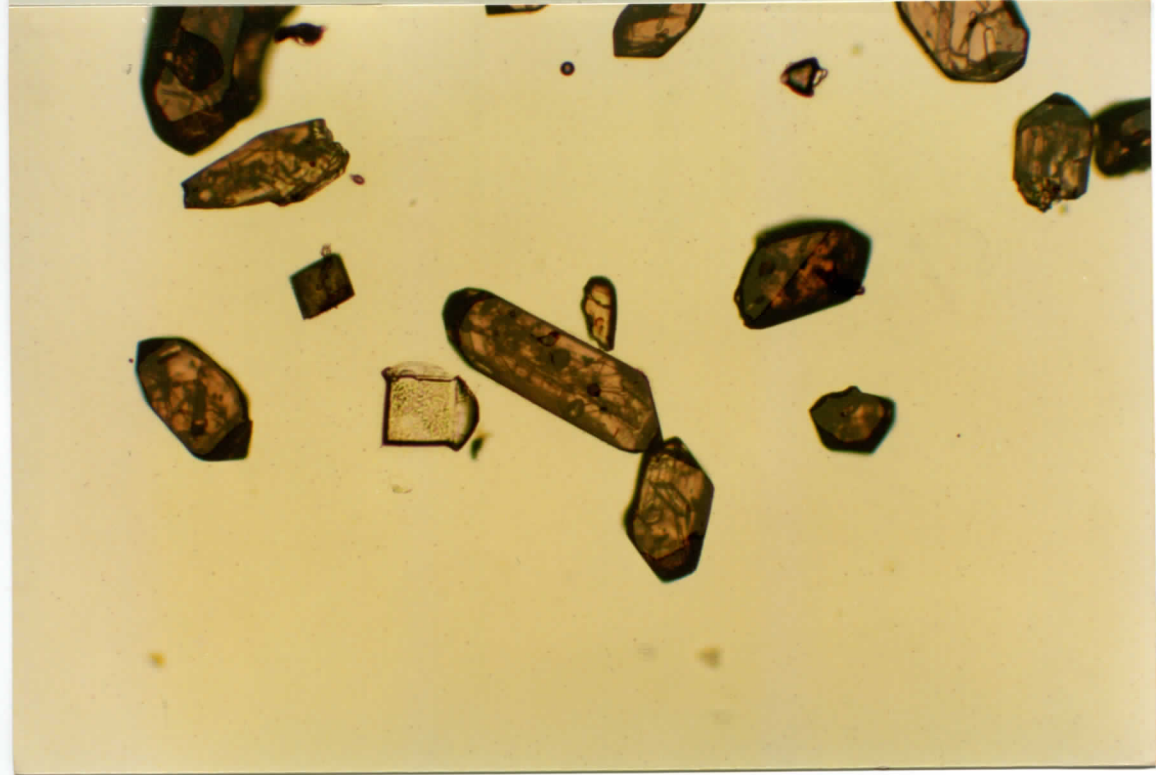
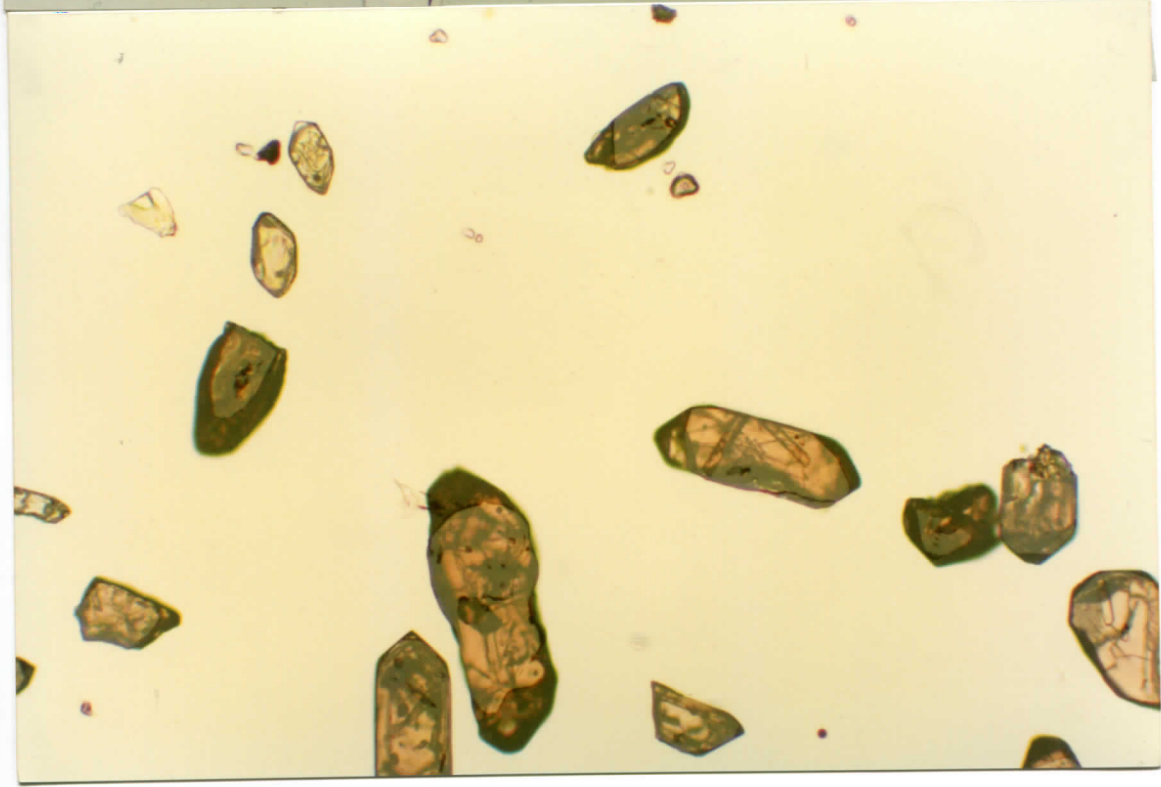
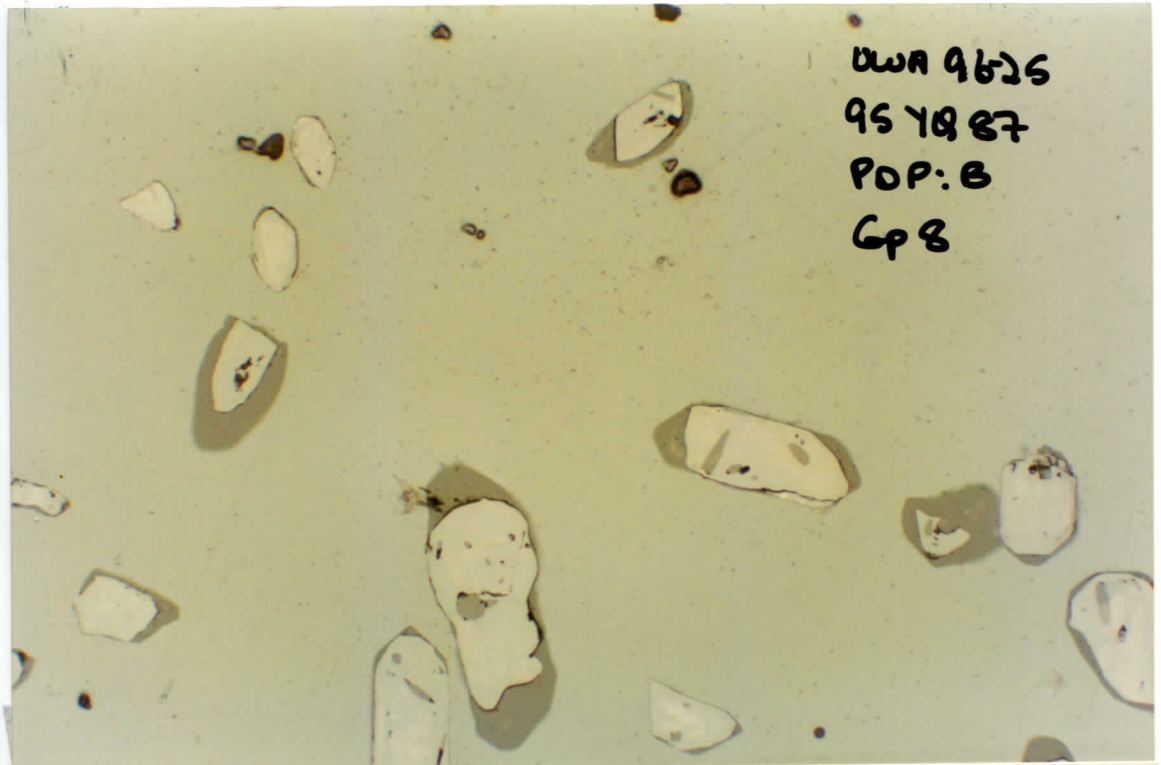


WNA96-25
9548-87
POP. B
6p7



UWA 9626
95 70 87
POP: B
Gp 8

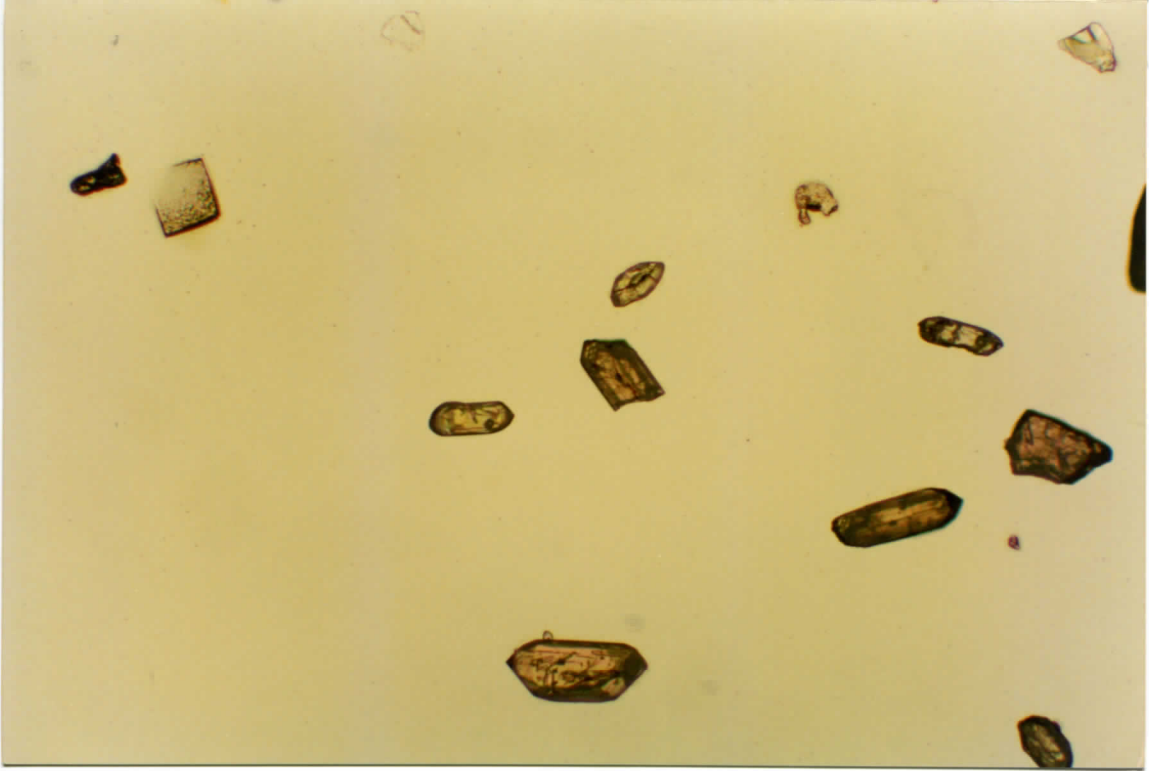
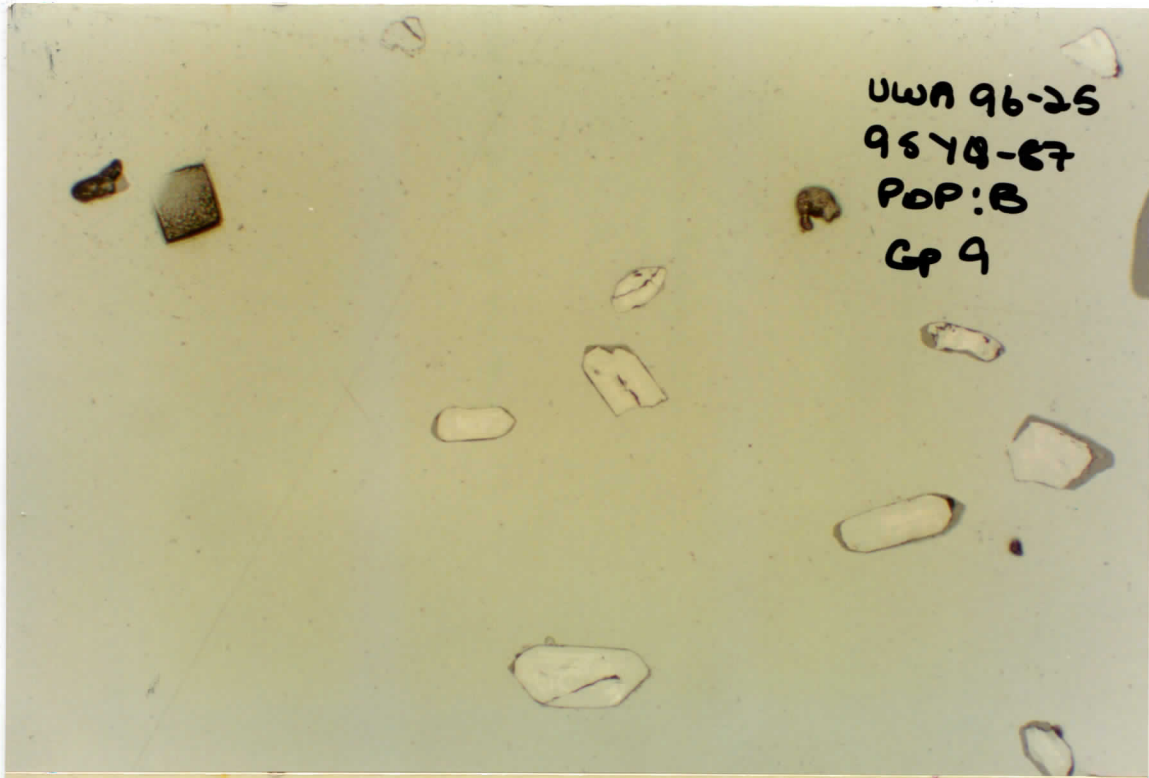


UWA 96-25

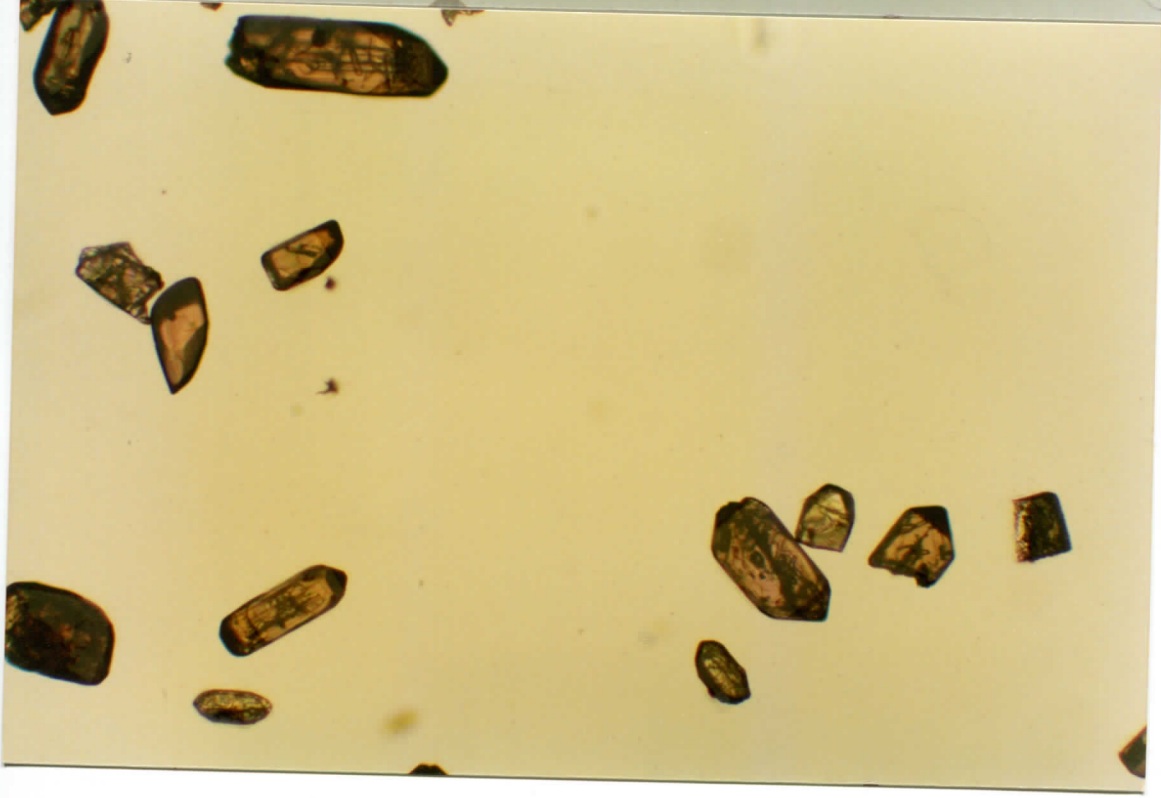
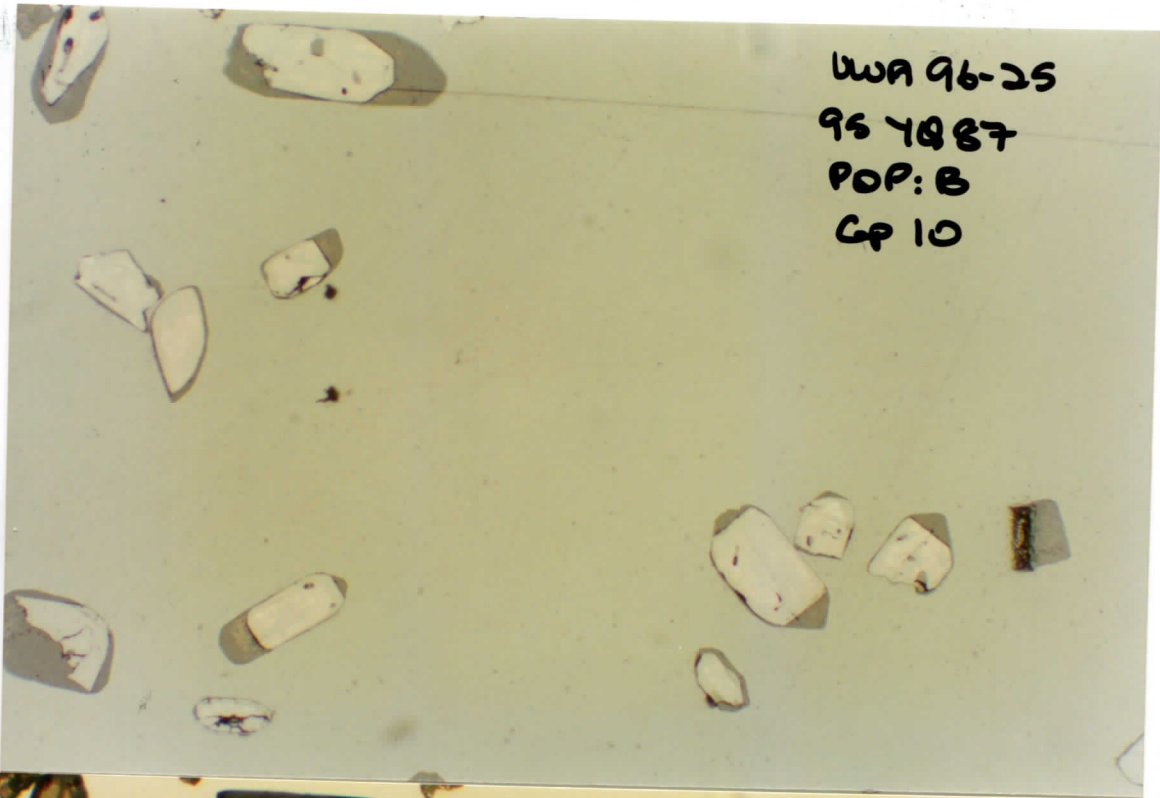
9578-67

POP: B

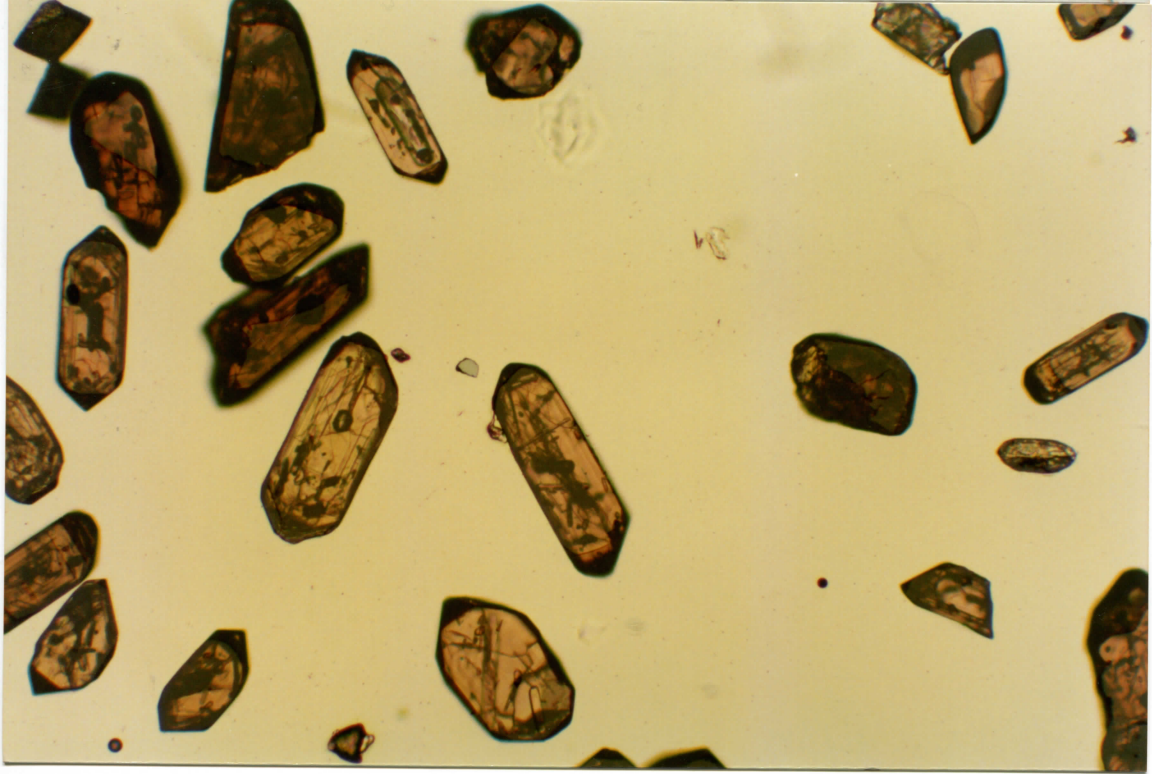
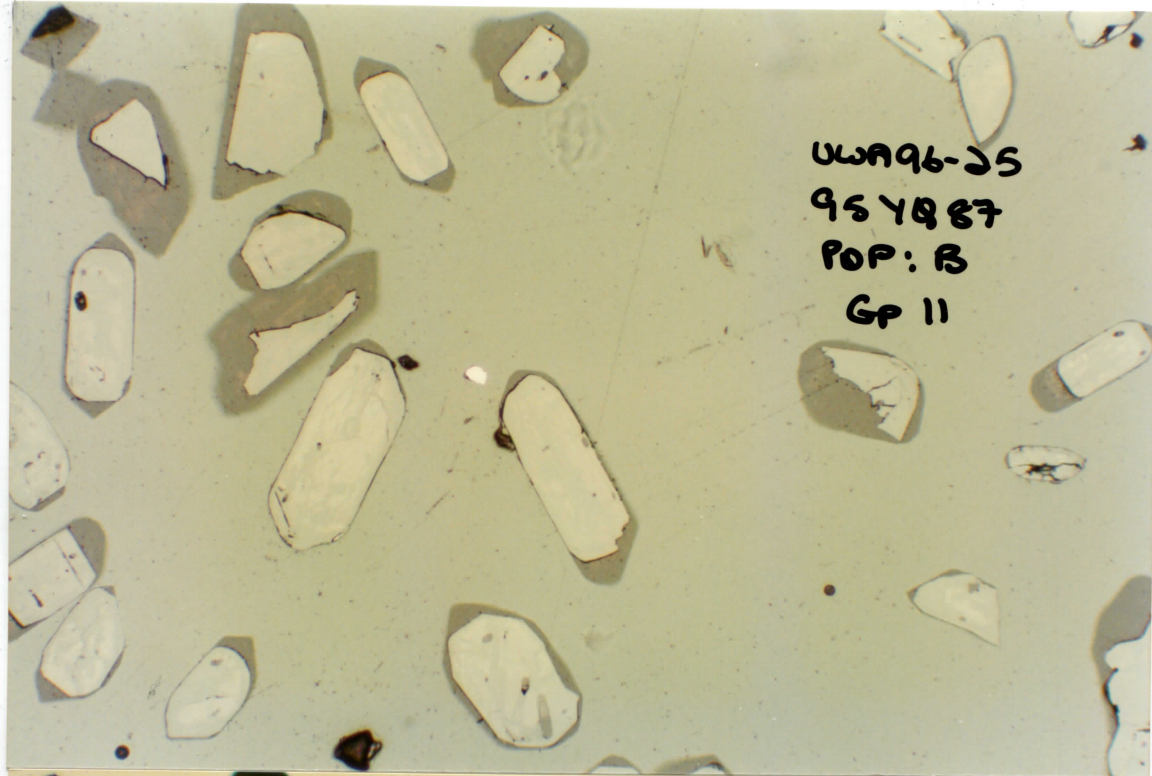
Gr 9



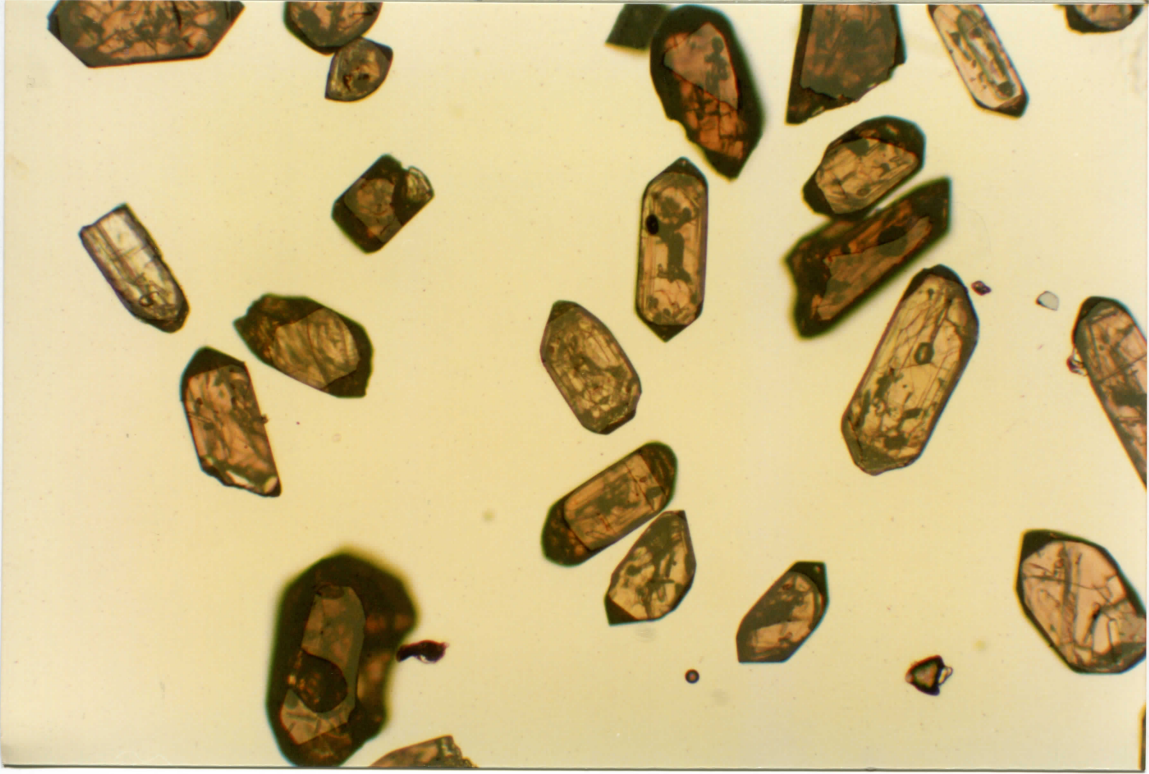
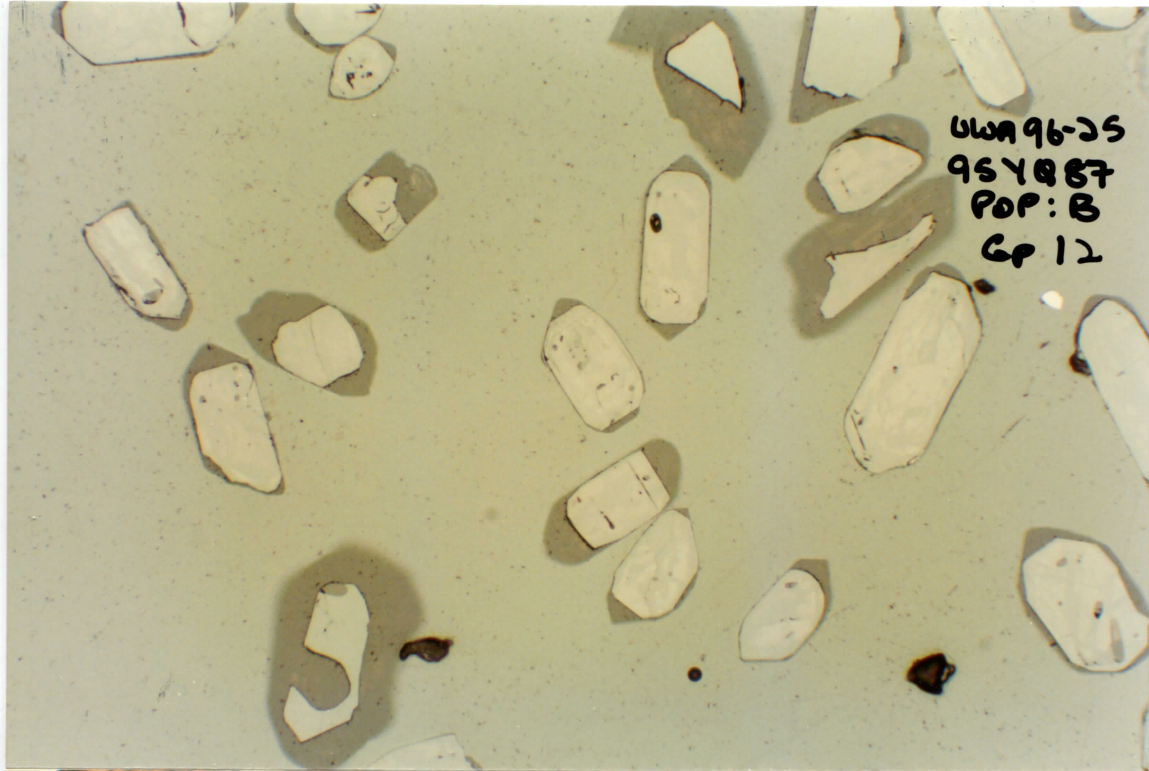
UWA 96-25
95 YQBT
POP: B
CP 10



UWA96-25
95 YQ 87
POP: B
GP 11



UWA 96-25
954887
POP: B
CP 12



UWA 96-25
95 Y8 87

POP: B
CP 13

1-91

16-1

H

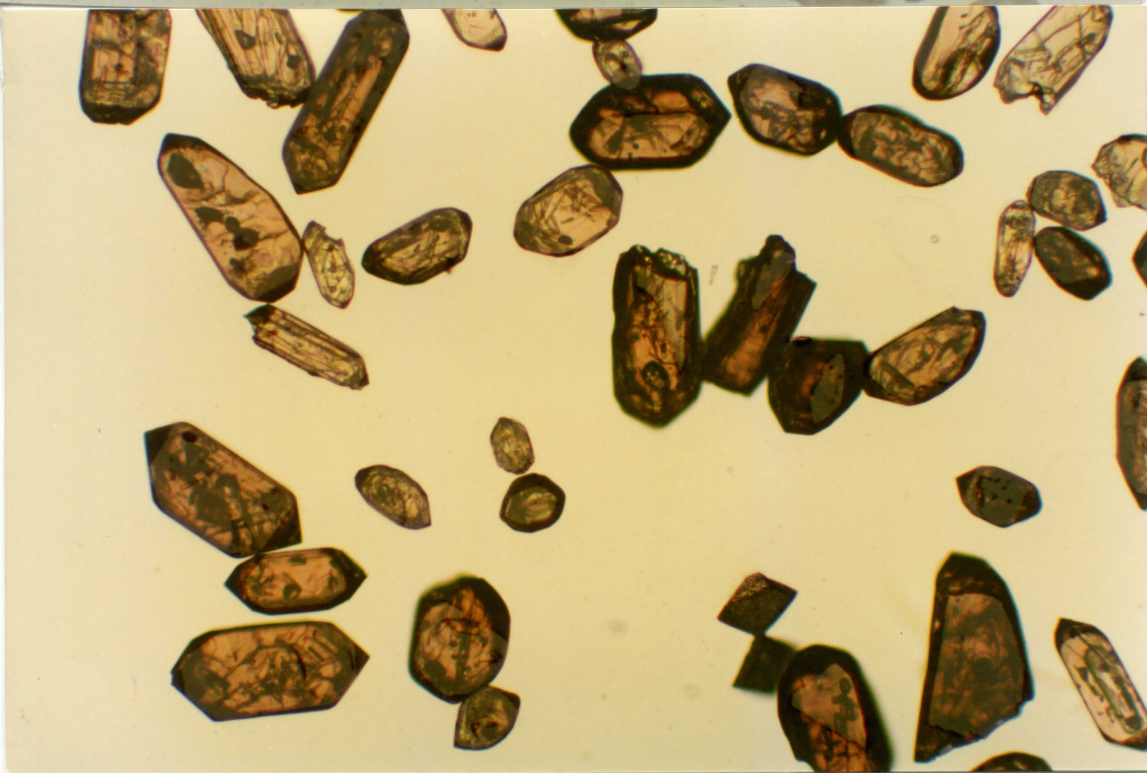
1-2

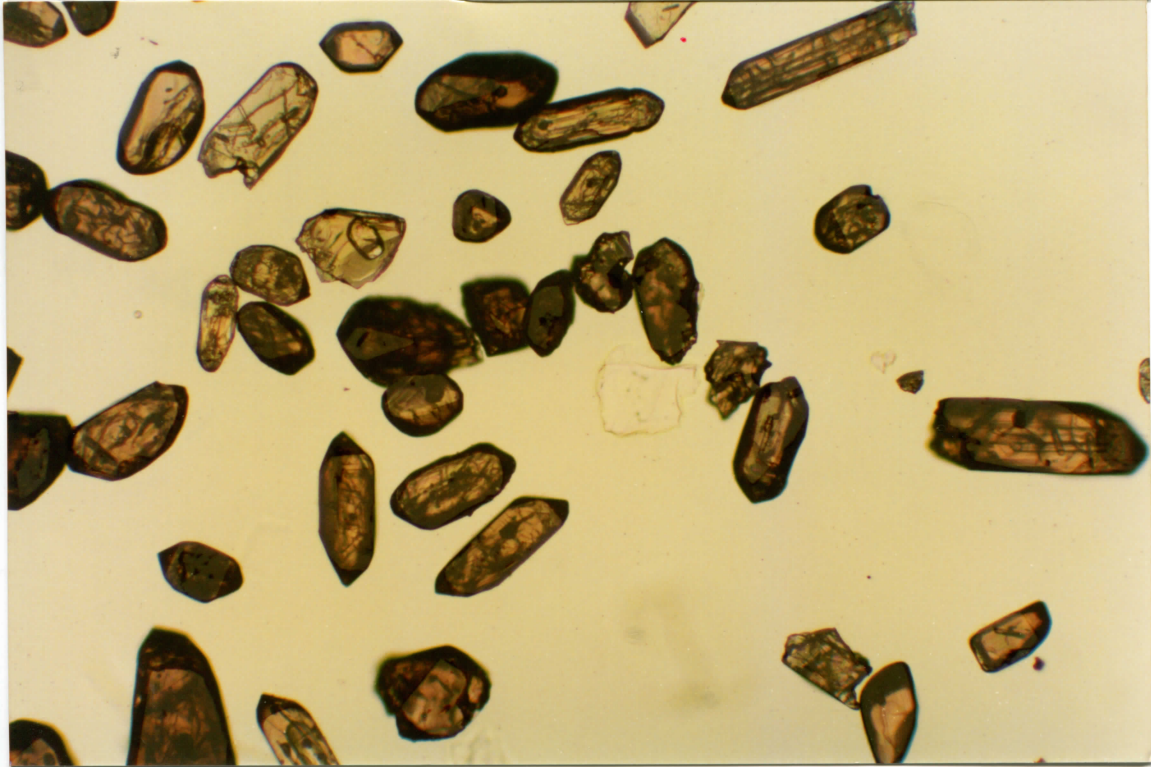
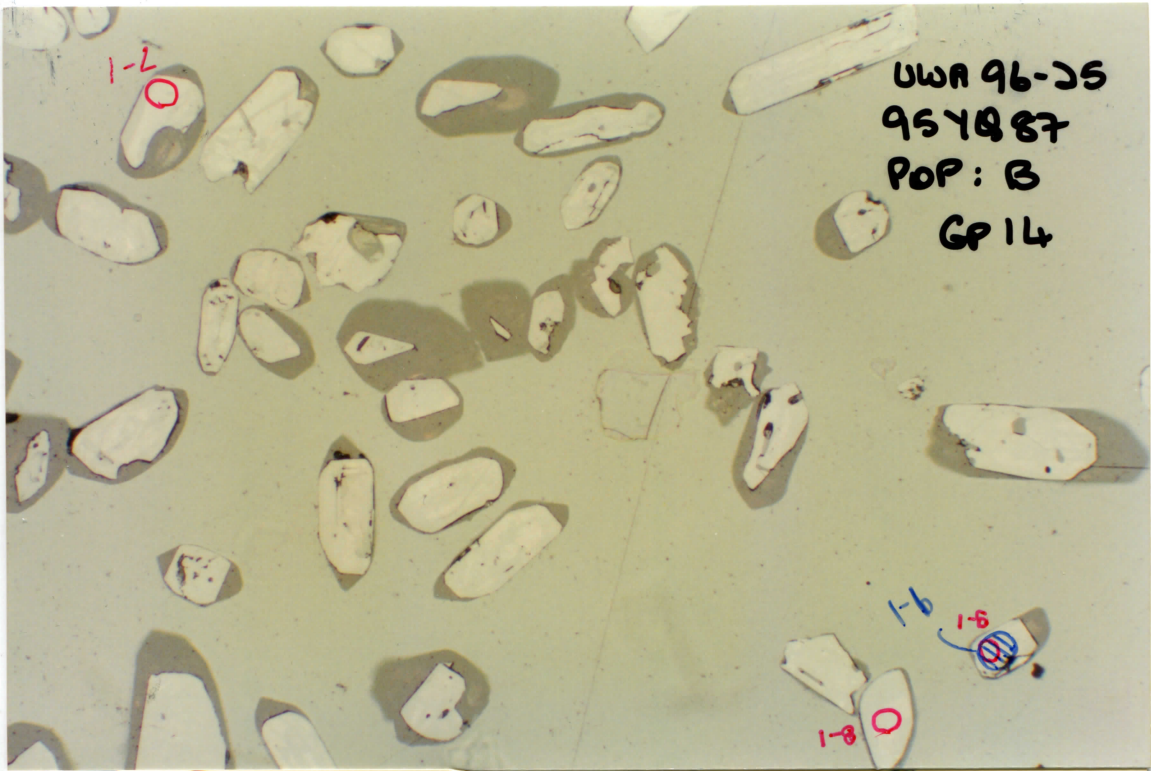
2-1

1-41

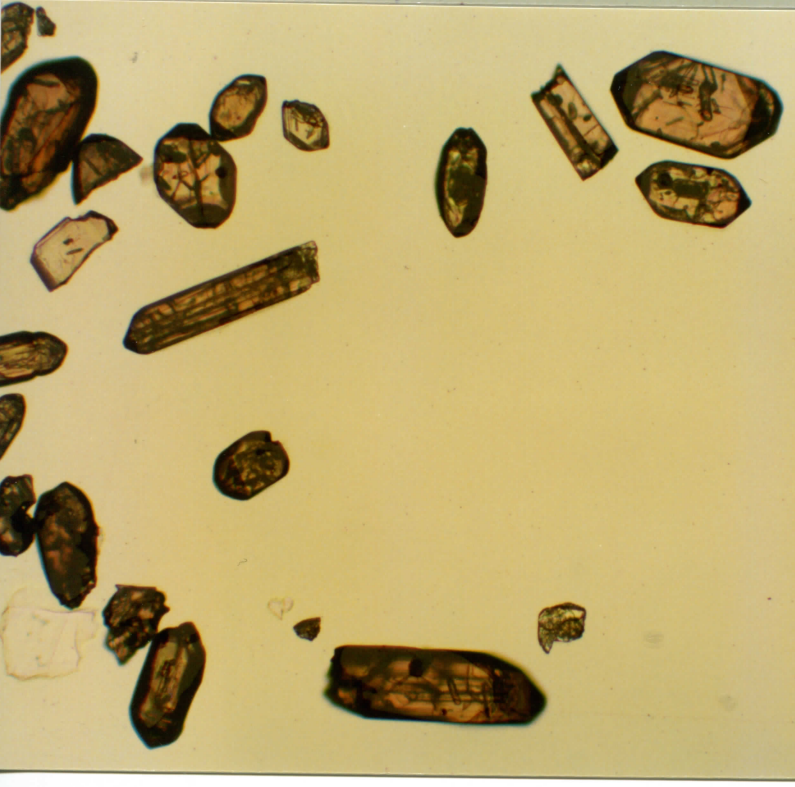
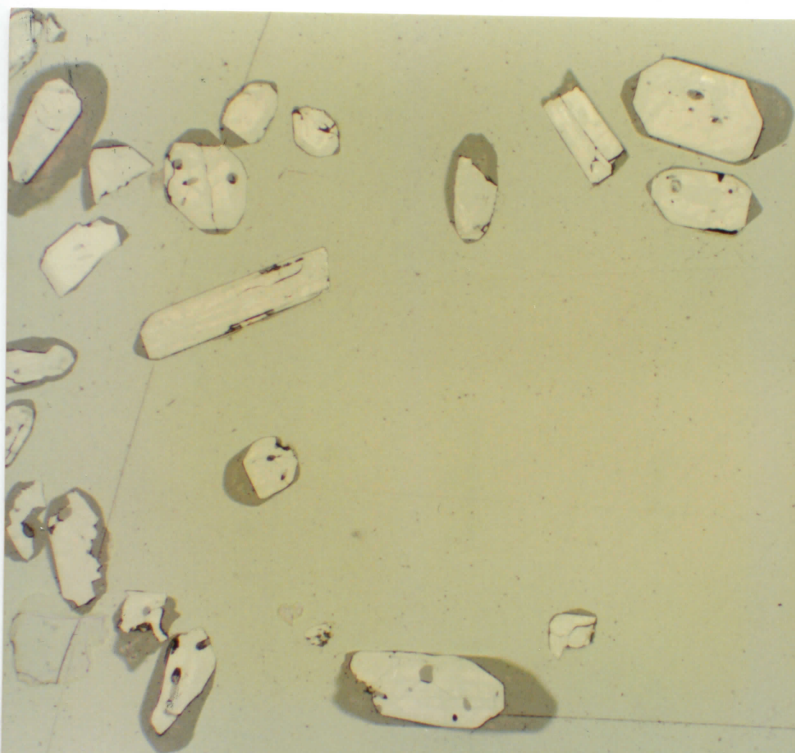
1-81

Q

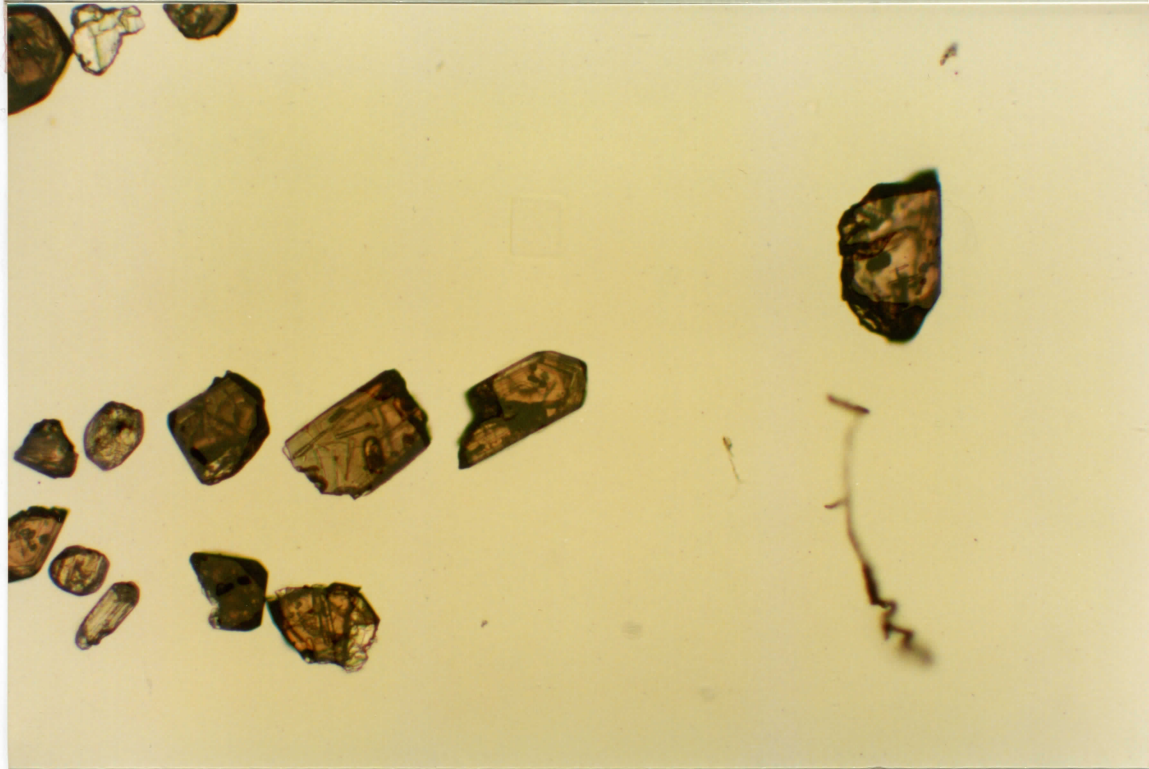
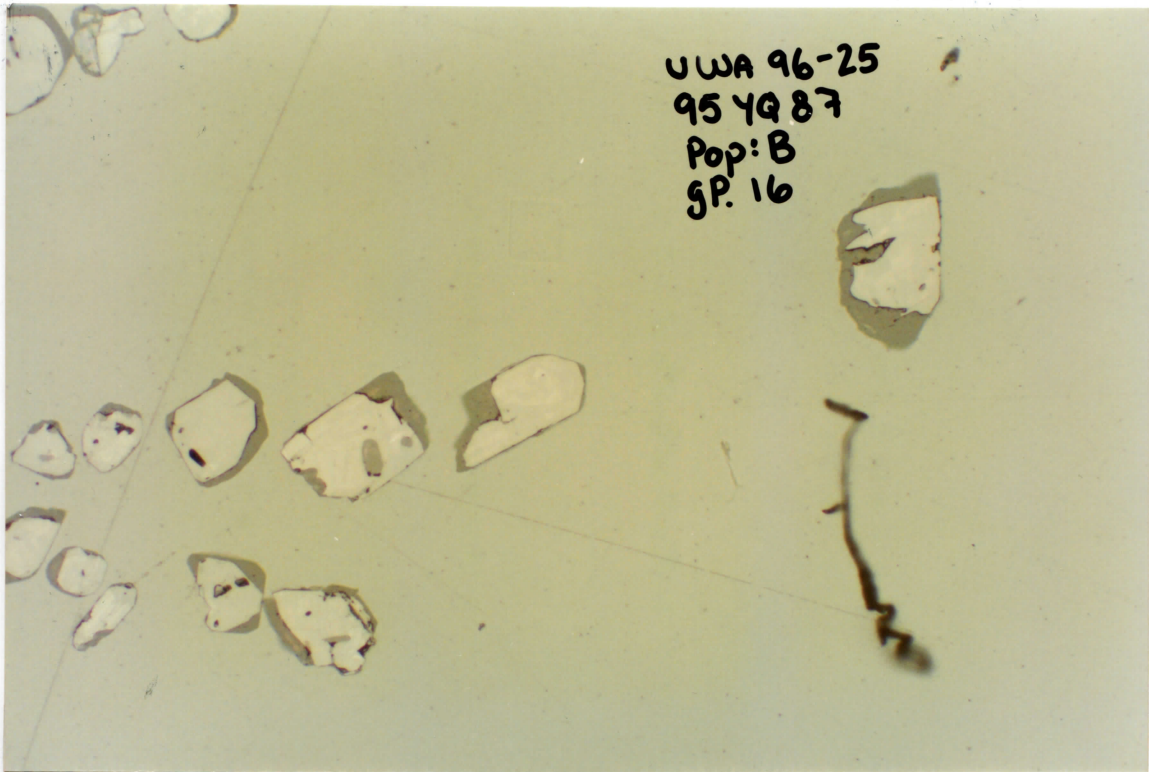


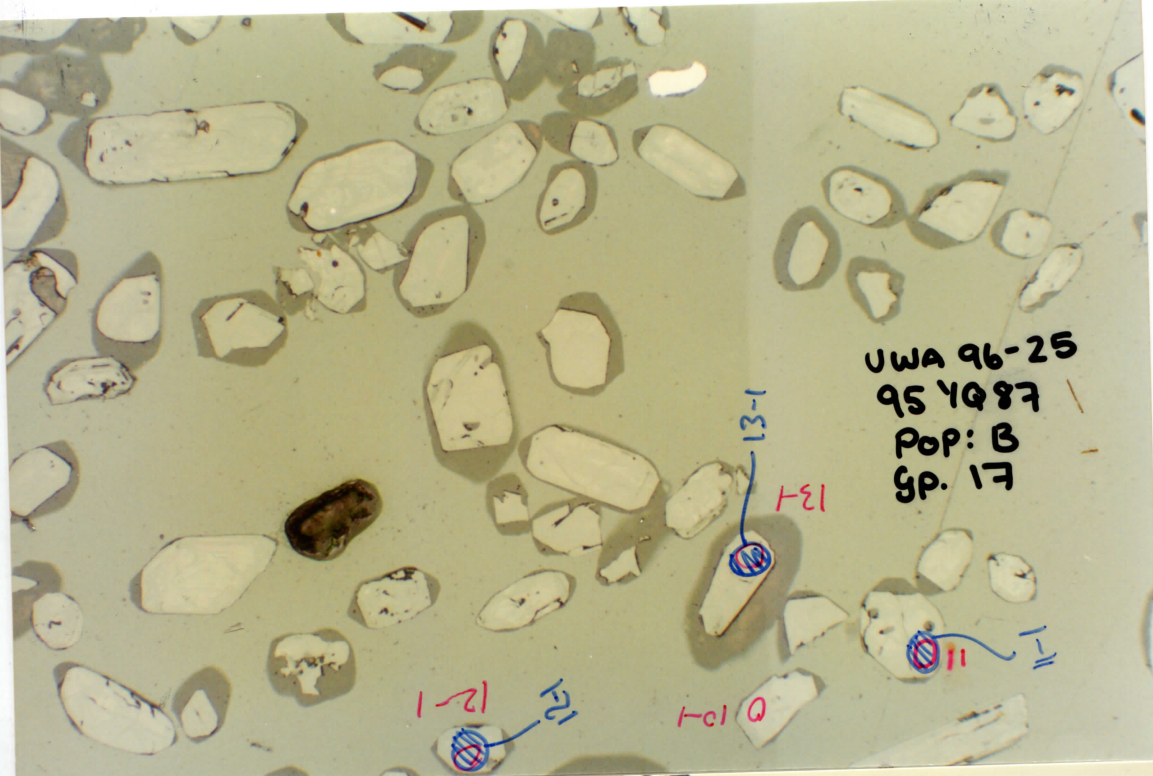


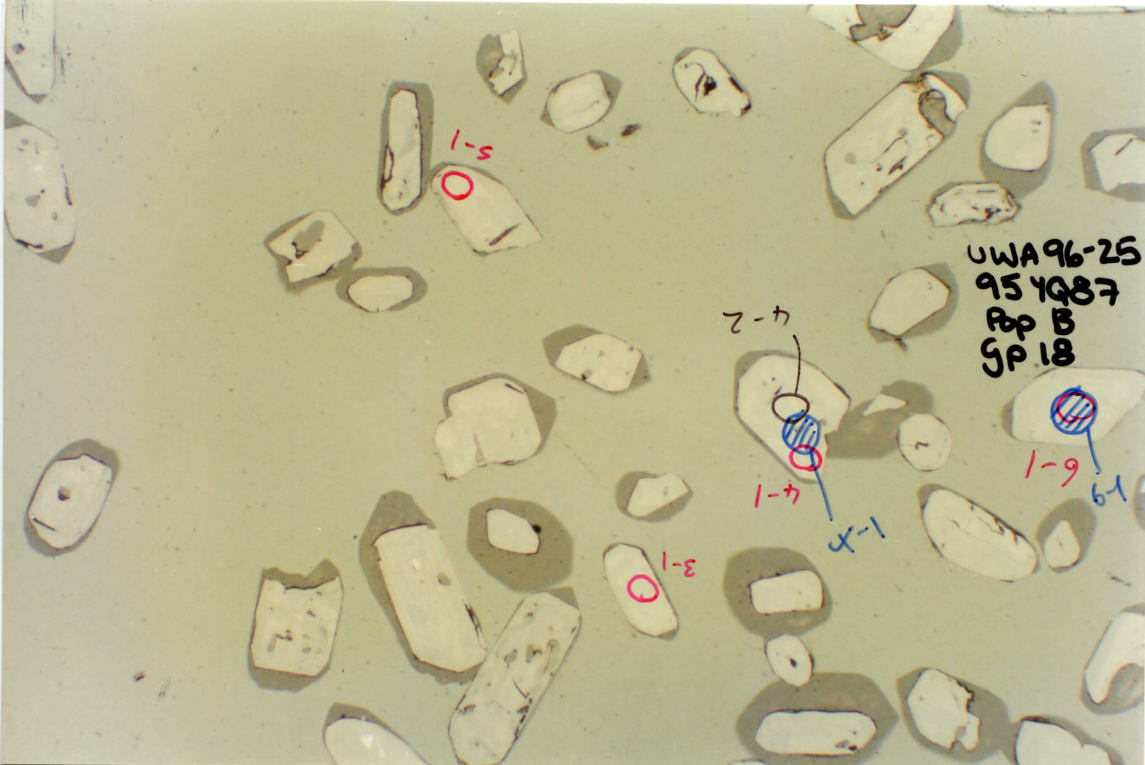
UWA 95-25
954987
POP: B
Gr. 15

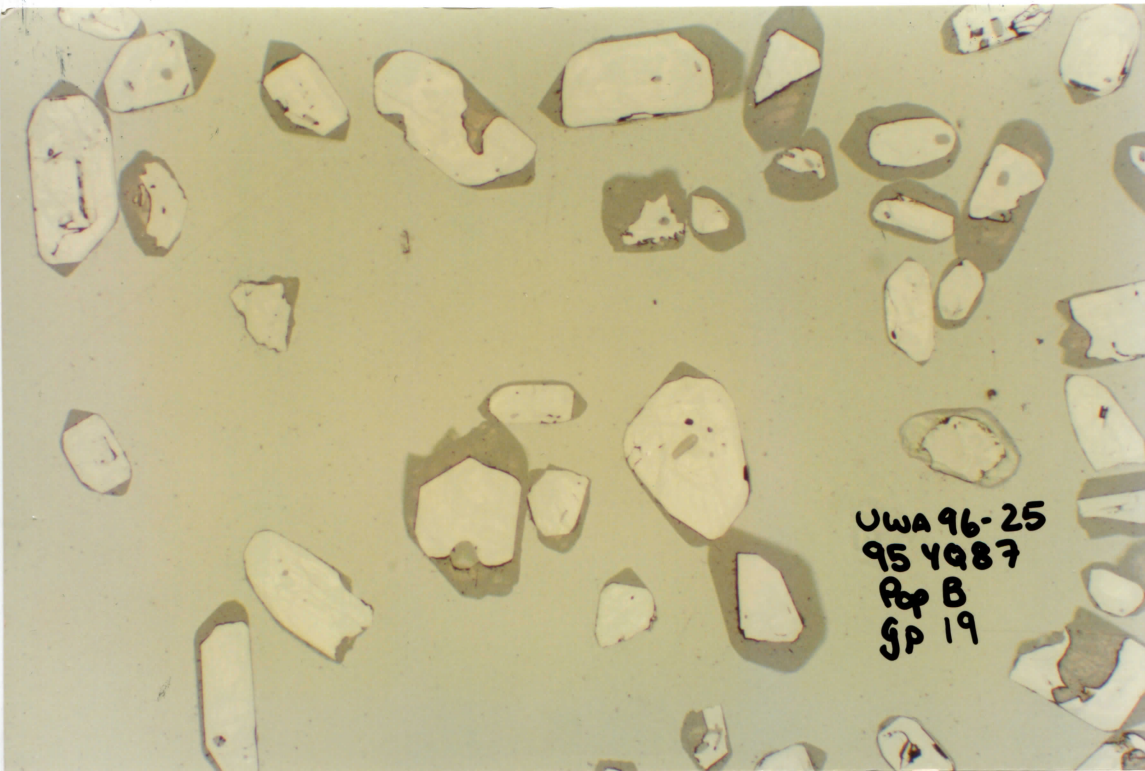


UWA 96-25
95 YQ 87
Pop: B
gp. 16

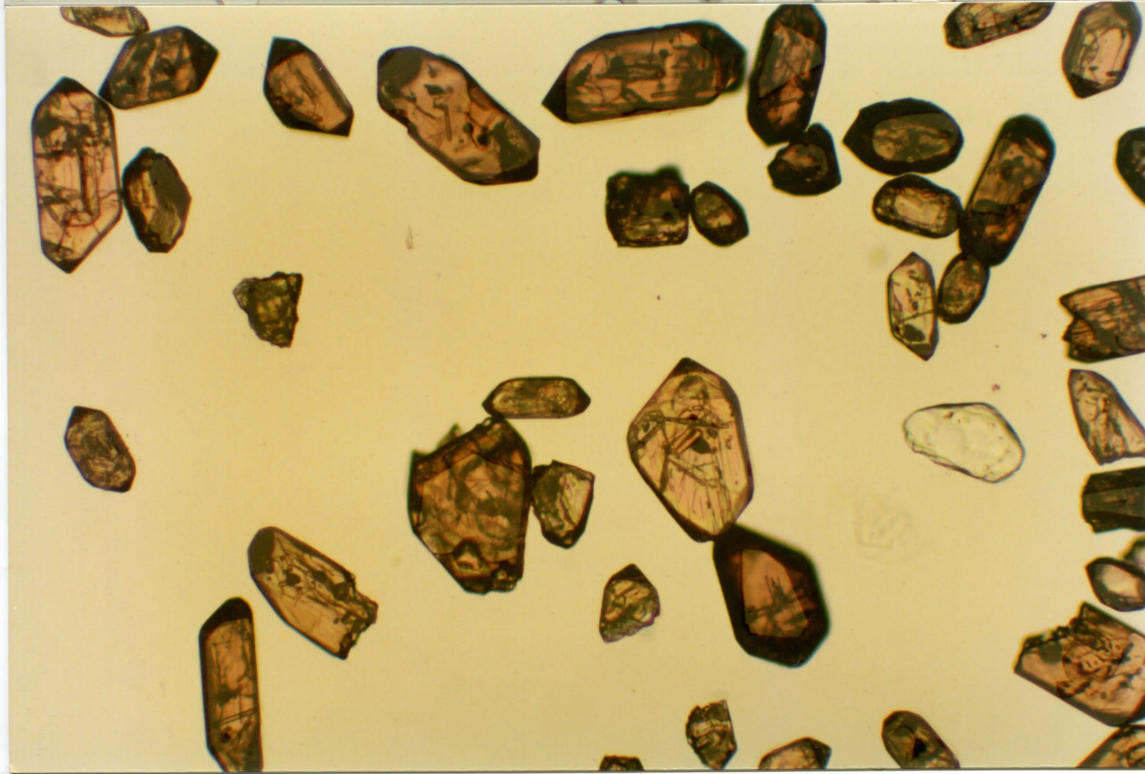


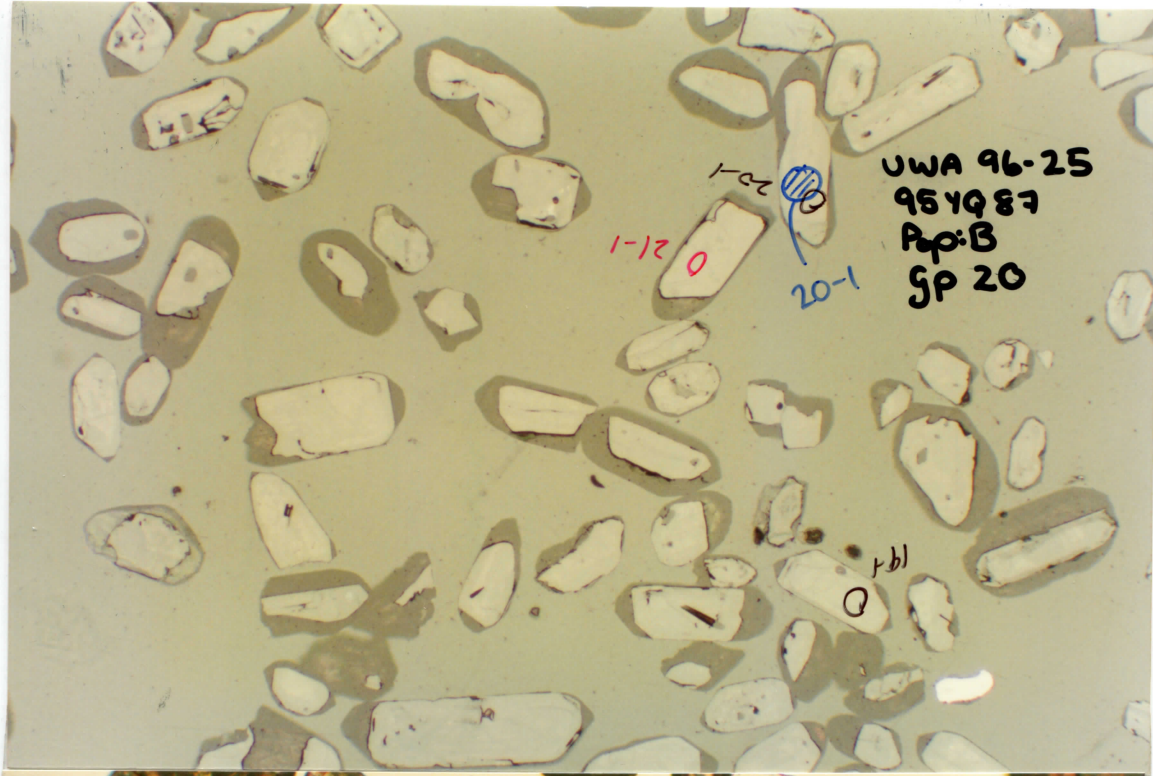






UWA 96-25
95 YQ87
Pop B
SP 19



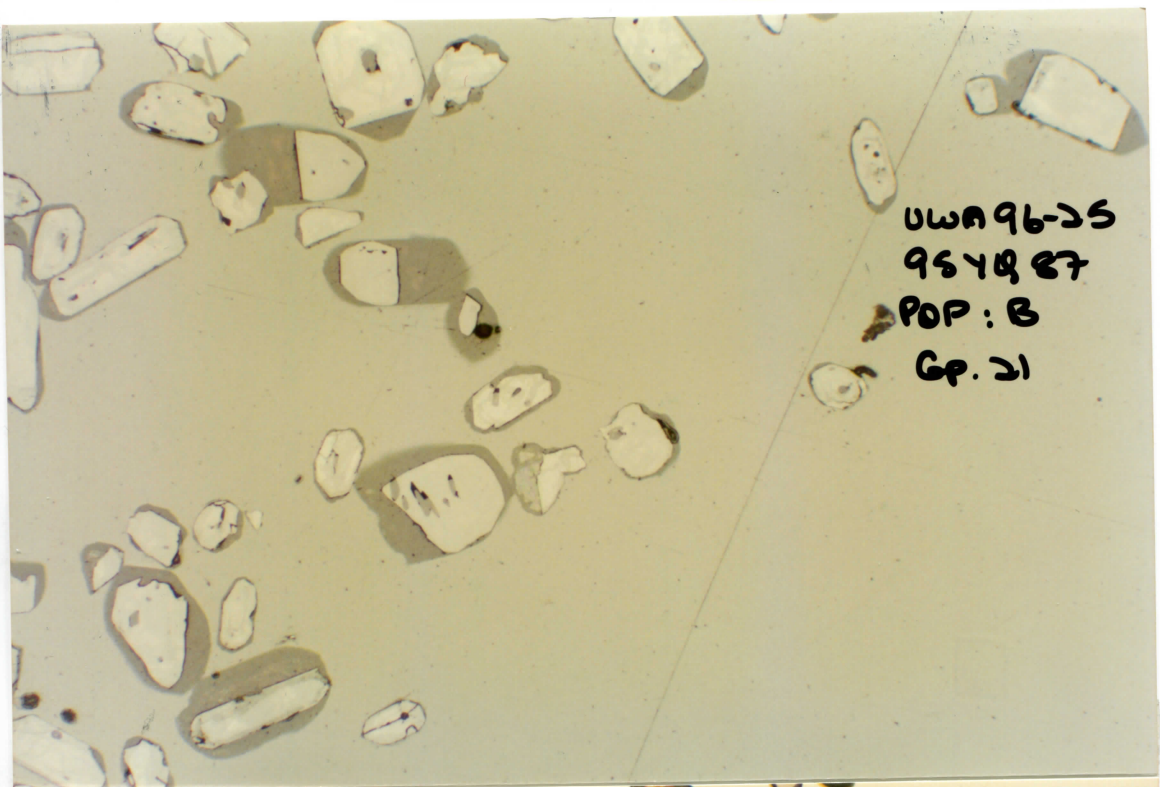


1-22
21-1
0
20-1

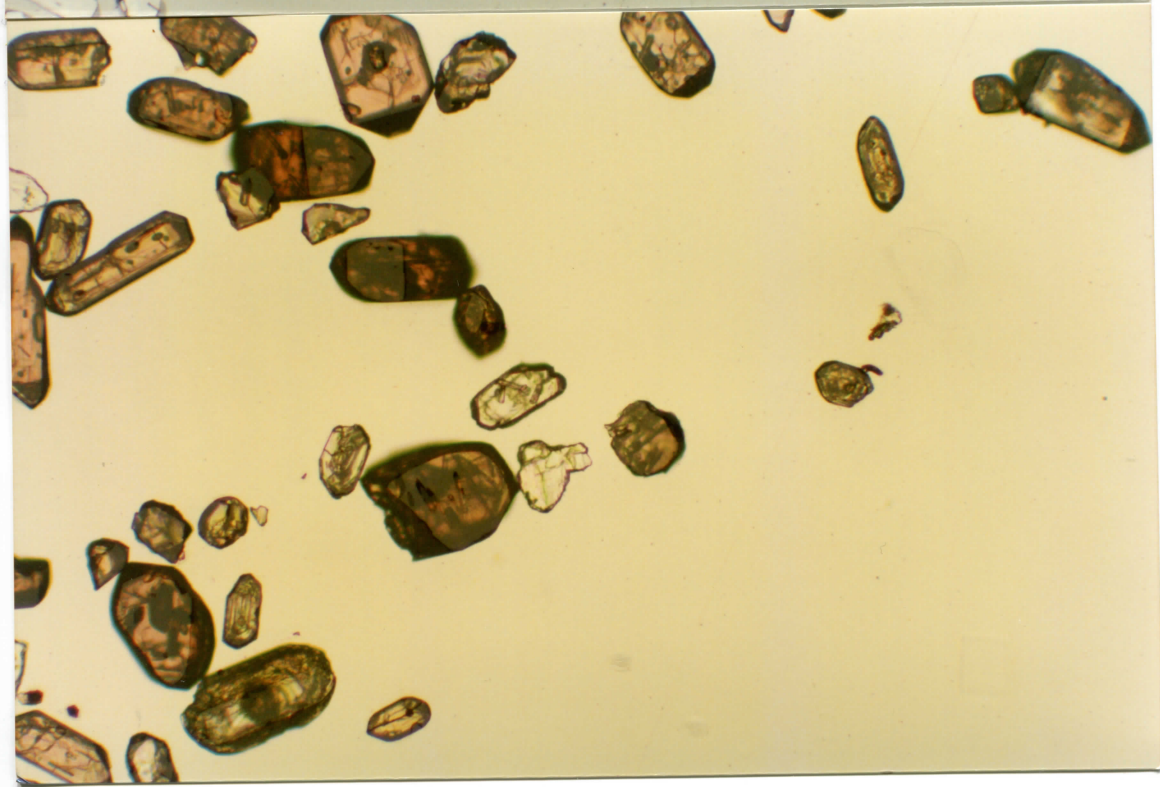
UWA 96-25
954987
Pap: B
SP 20

1-21
0

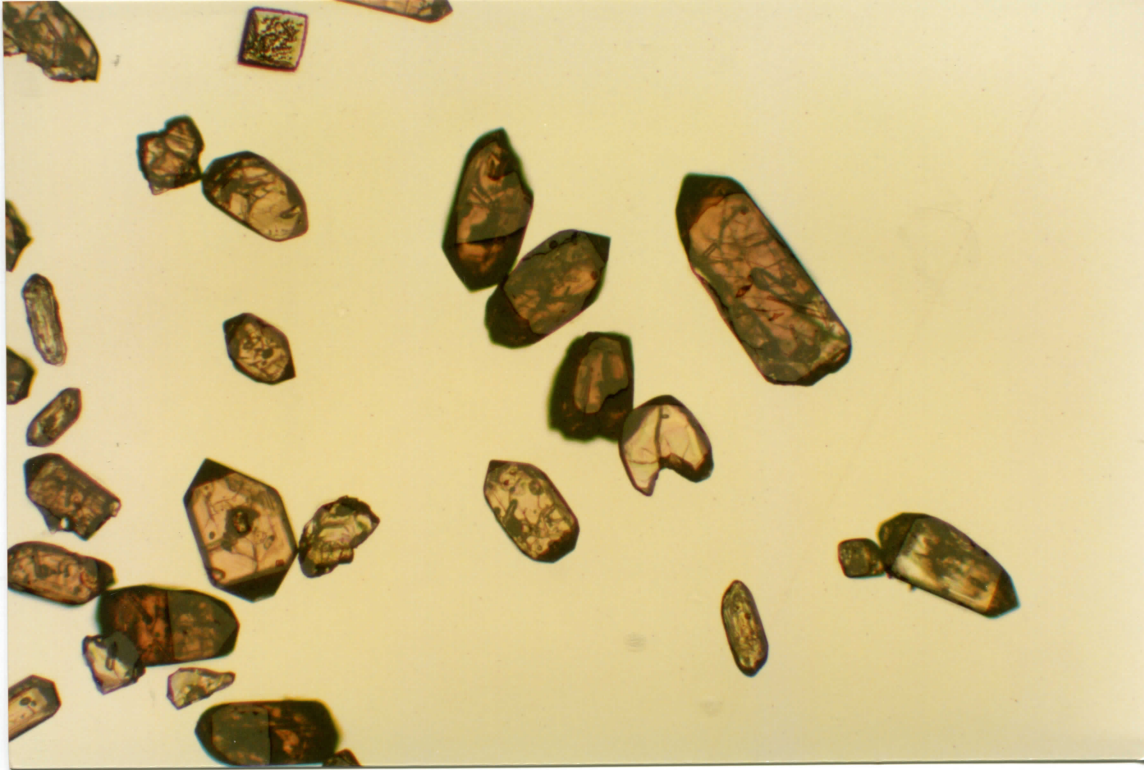
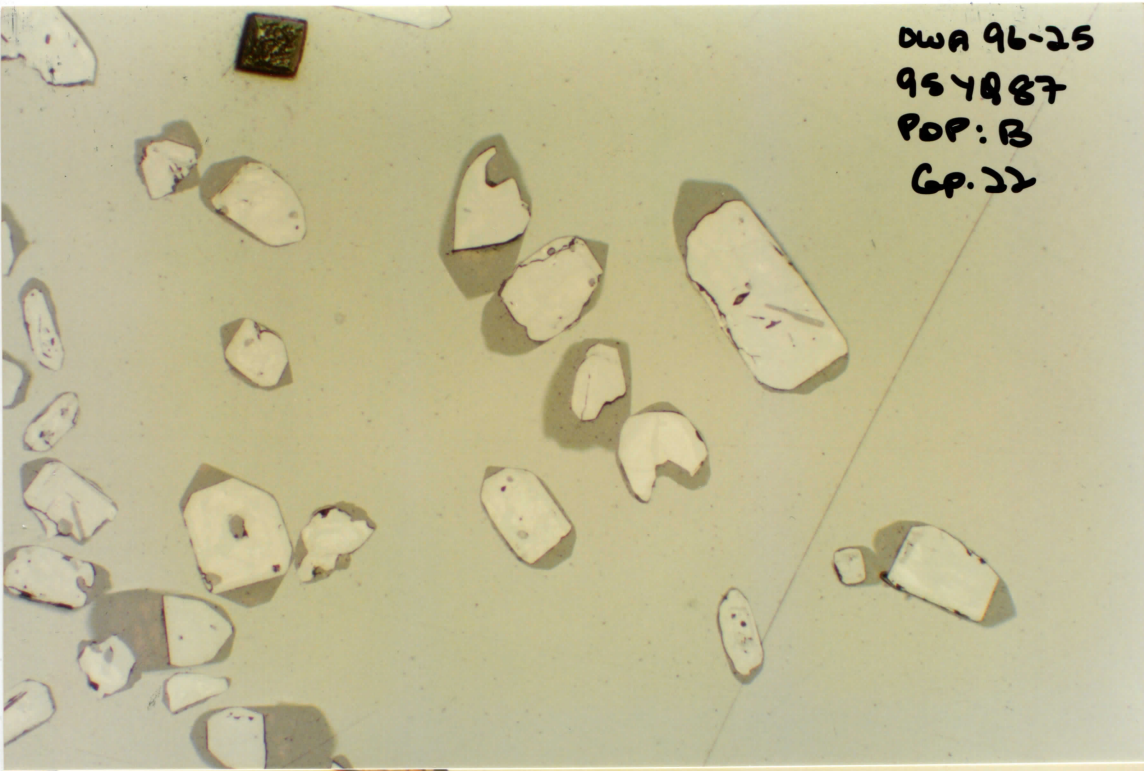




UWA96-25
954887
POP: B
Gr. 21

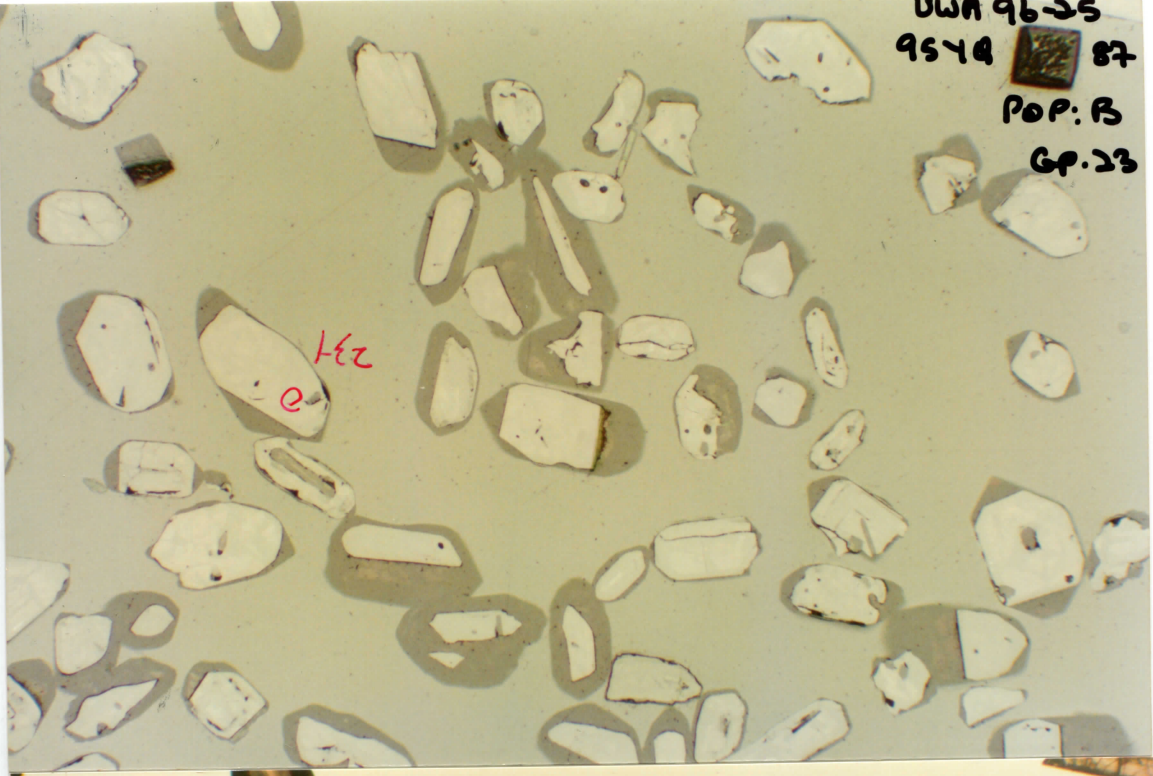


DWA 96-25
95487
POP: B
GP. 22



UWA 96-25
9574 87
POP: B
GP. 23

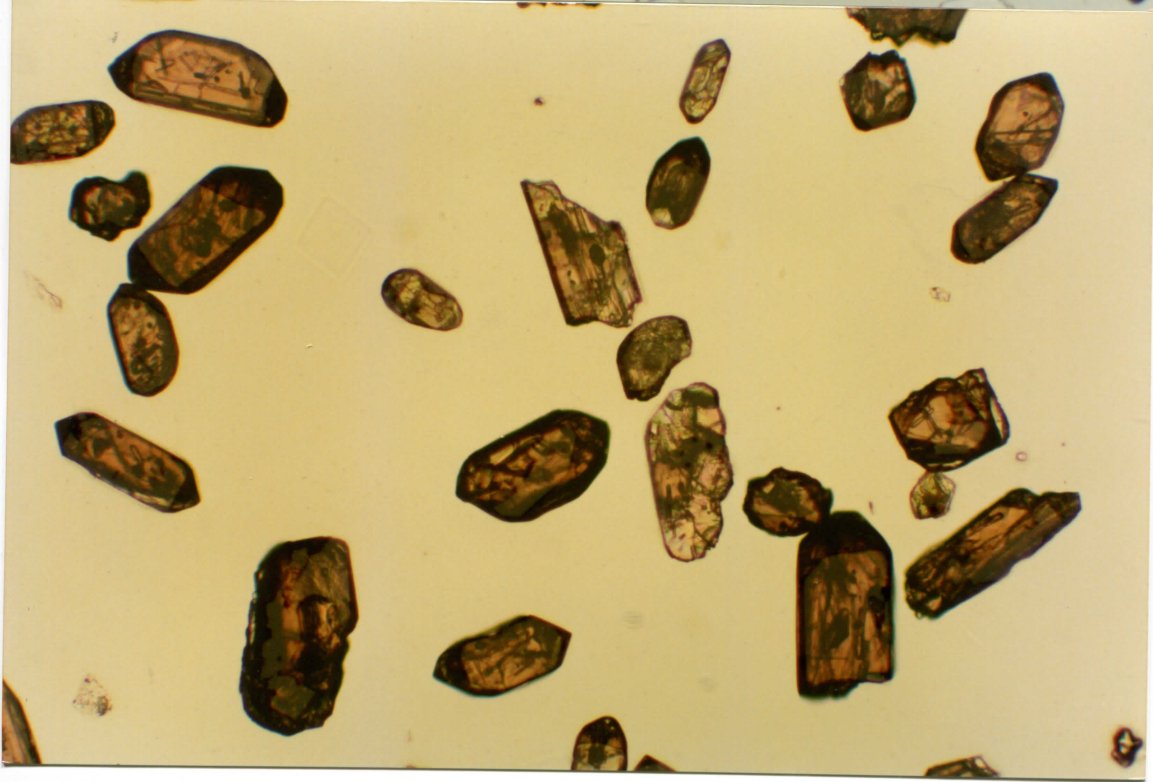
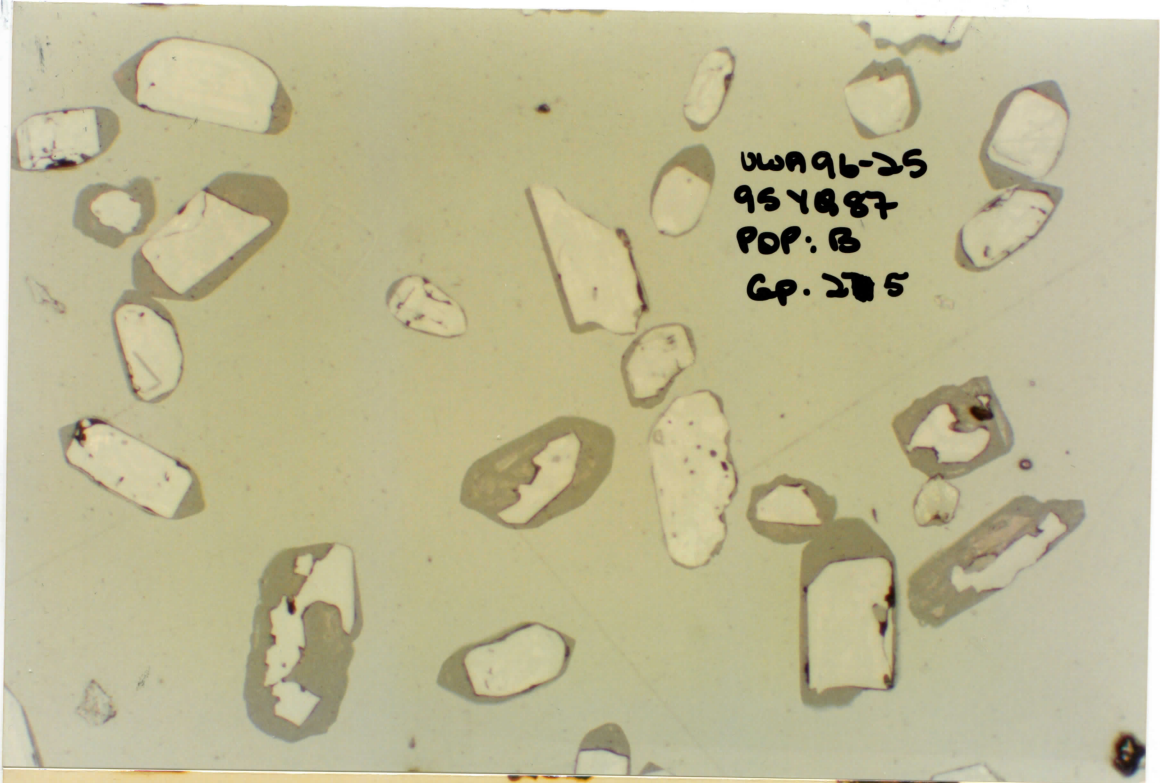
Hz
e



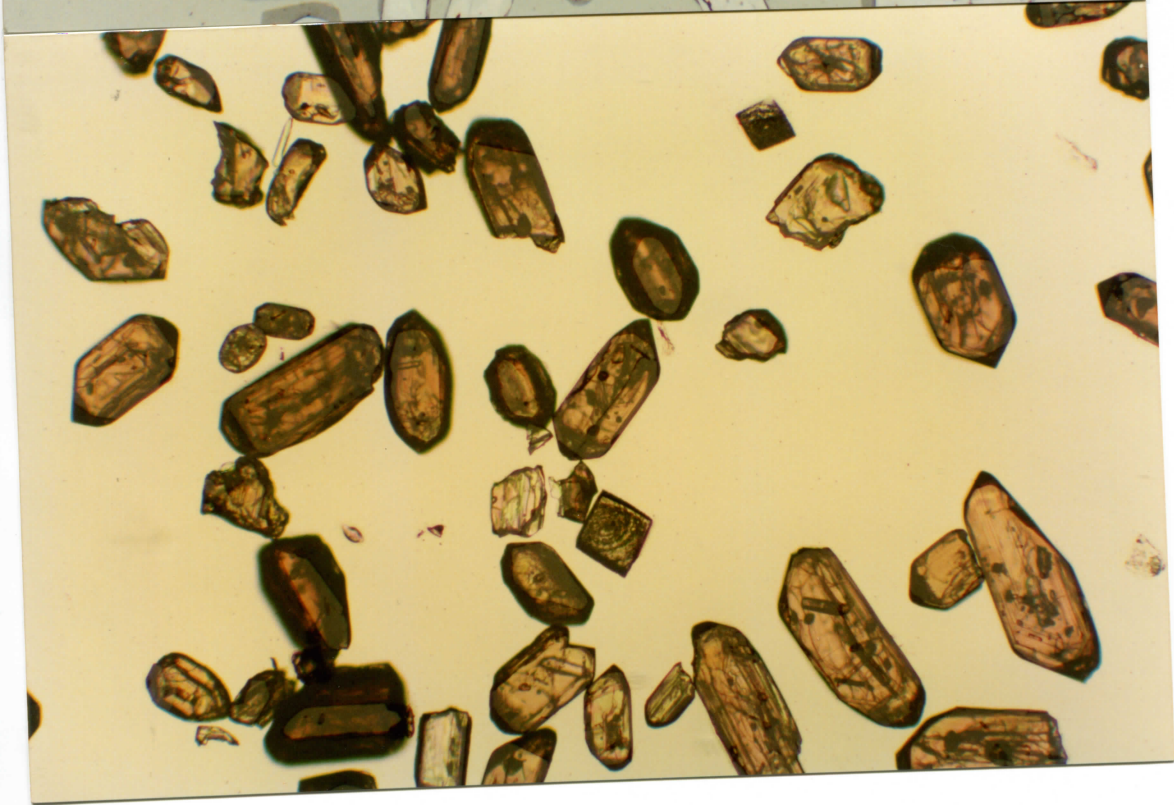
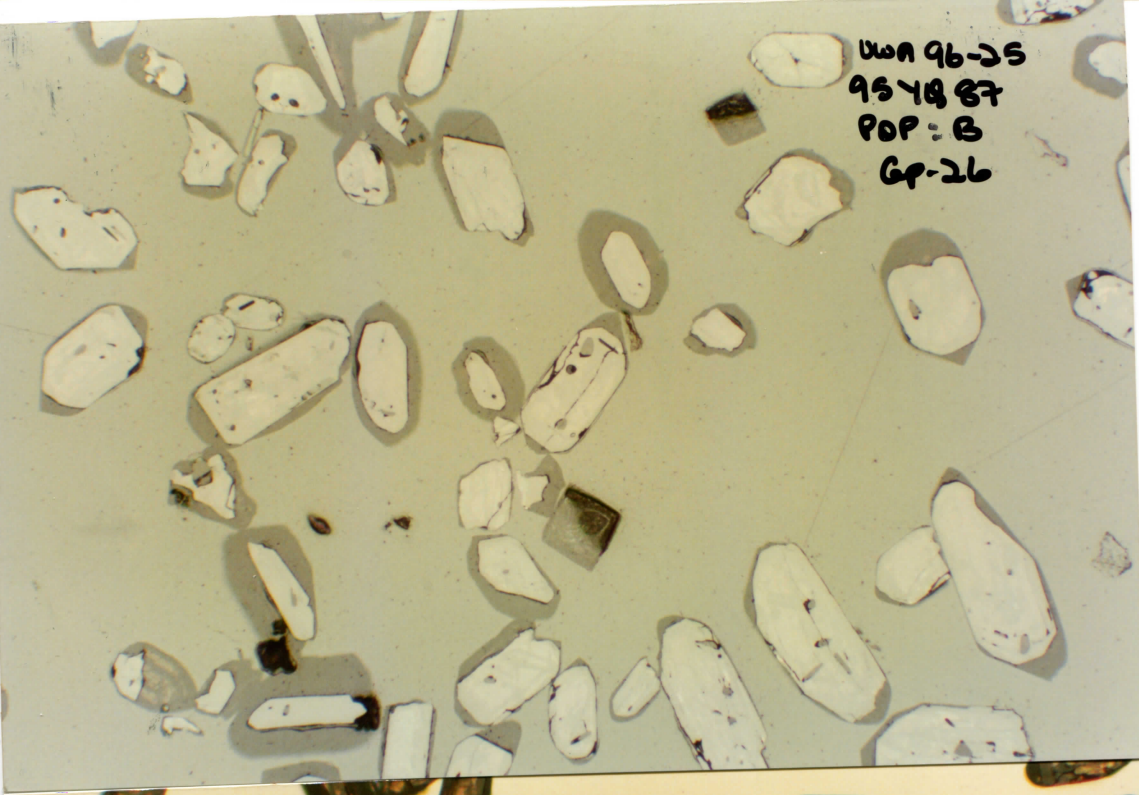
UWA96-25
9548-87
POP: B
Gr. 24

0 23-1

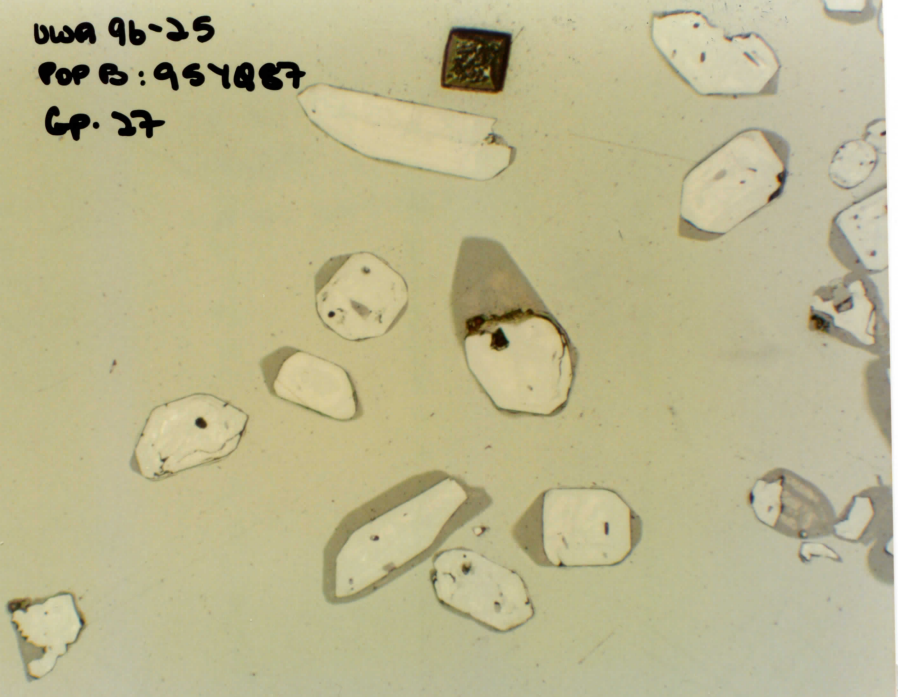
0 23-1



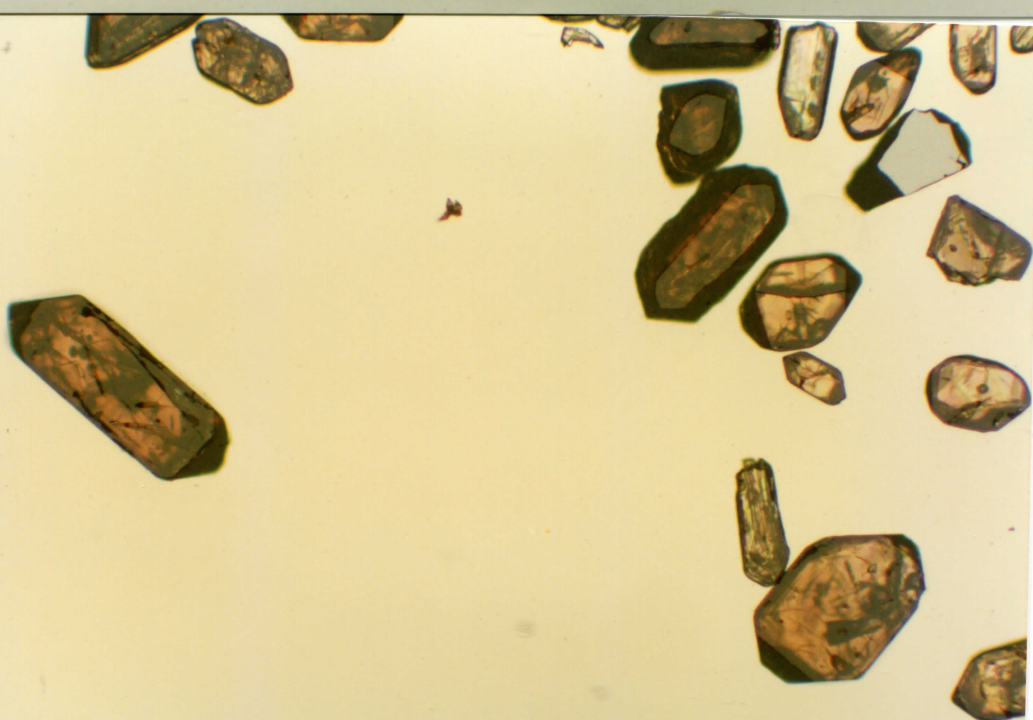
UWA 96-25
954887
POP: B
GP-26



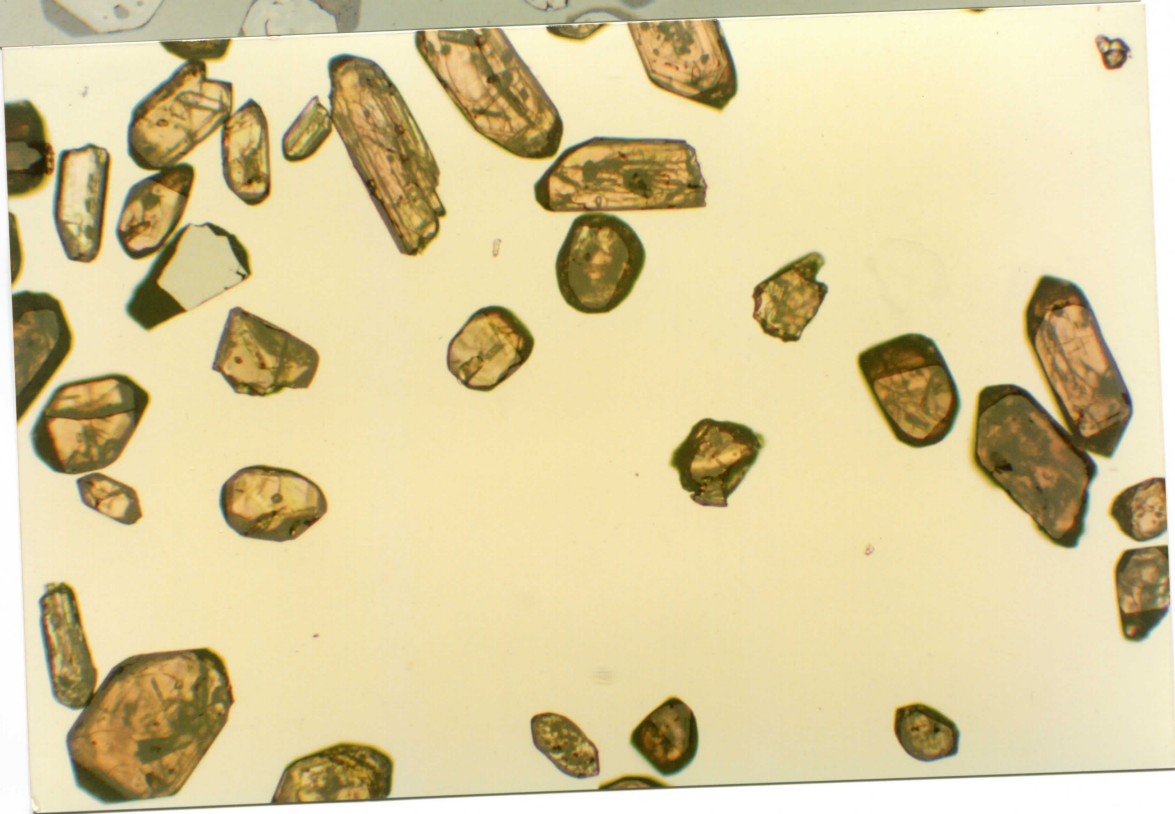
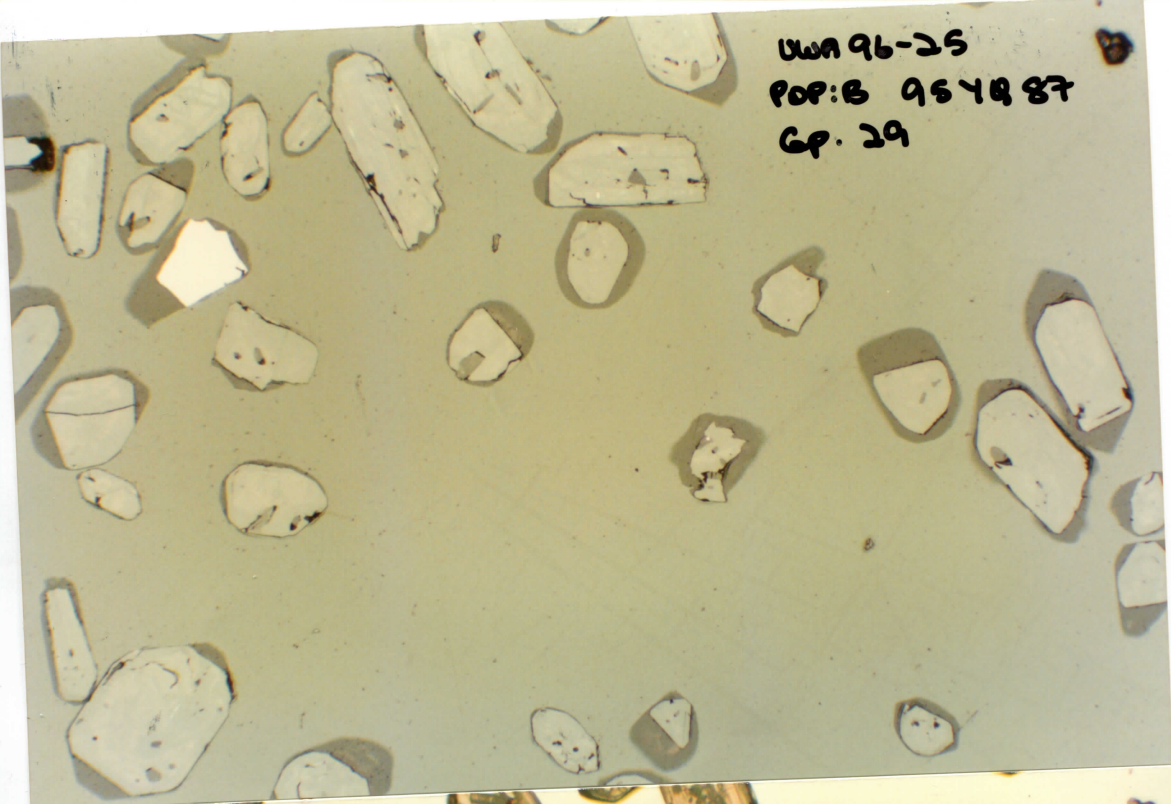
DWA 96-25
POP B: 954887
Gr. 27



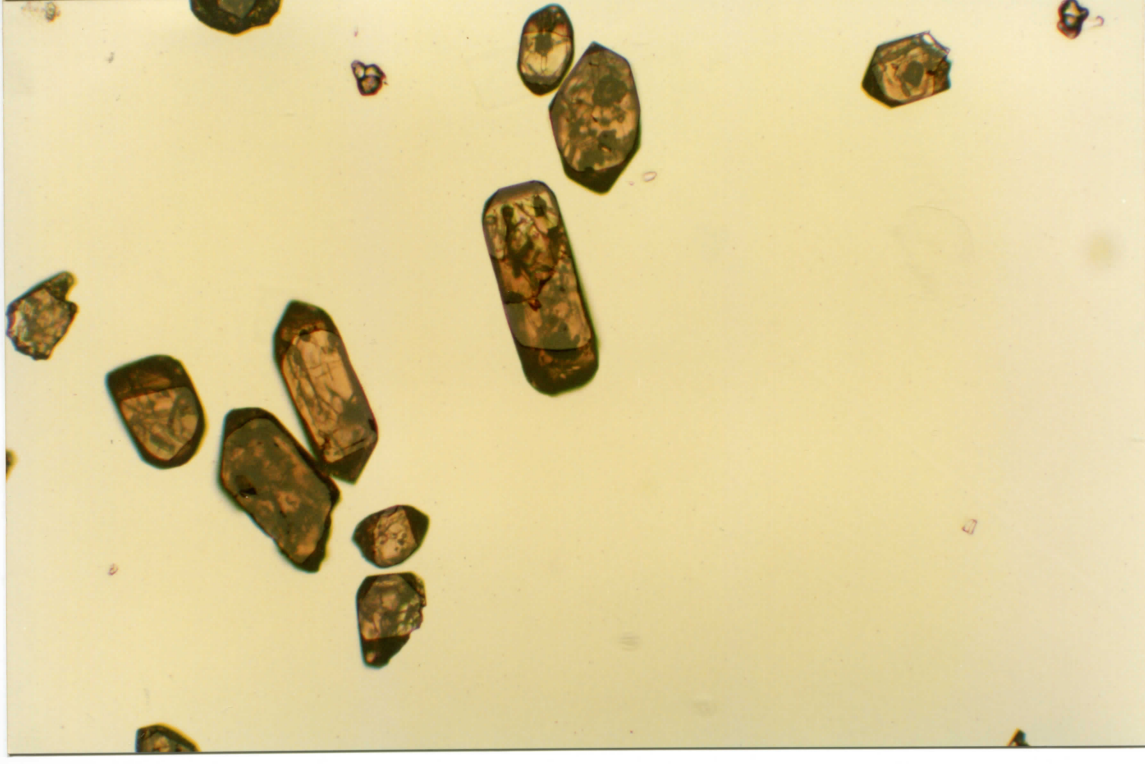
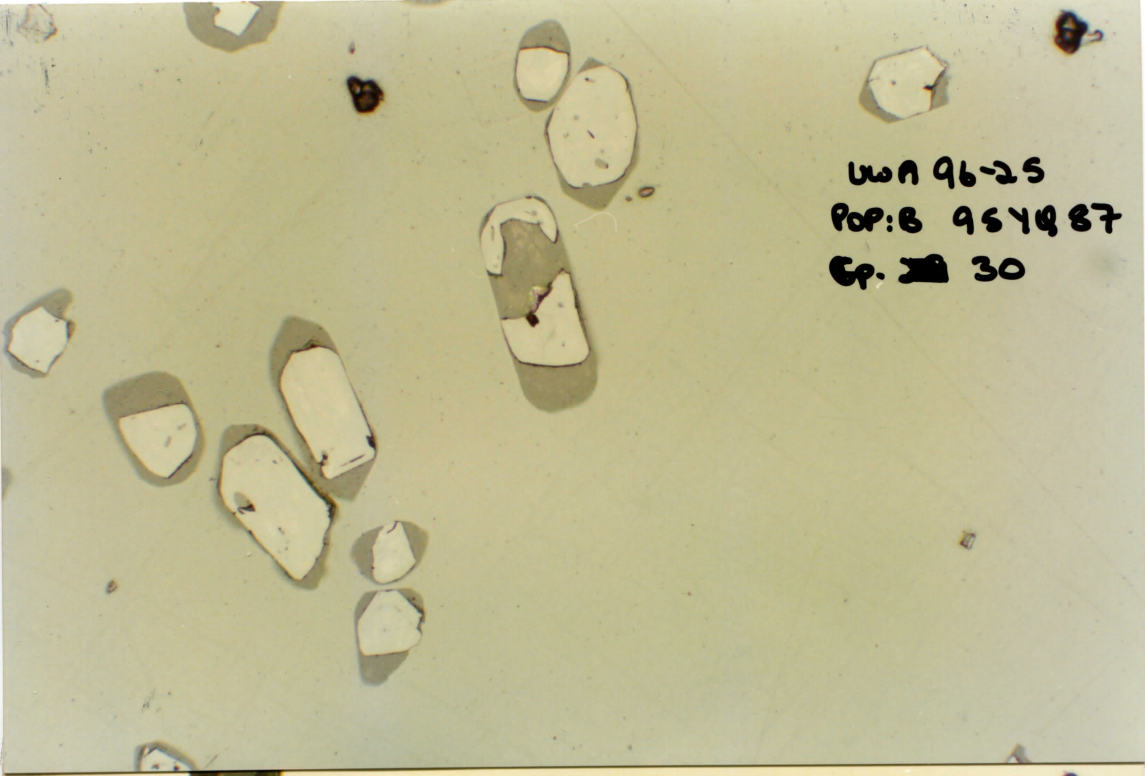
DWA 96-25
FORM: 964987
6P.25



UWA 96-25
POP: B 954887
GP. 29



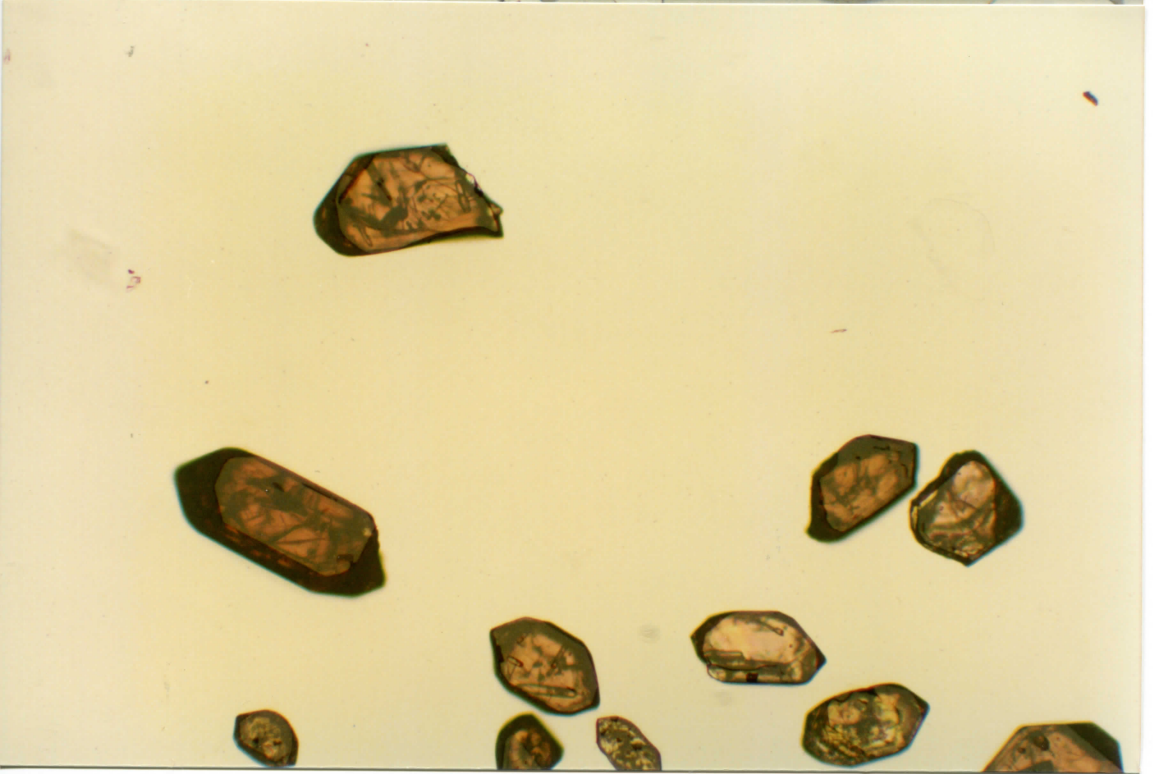
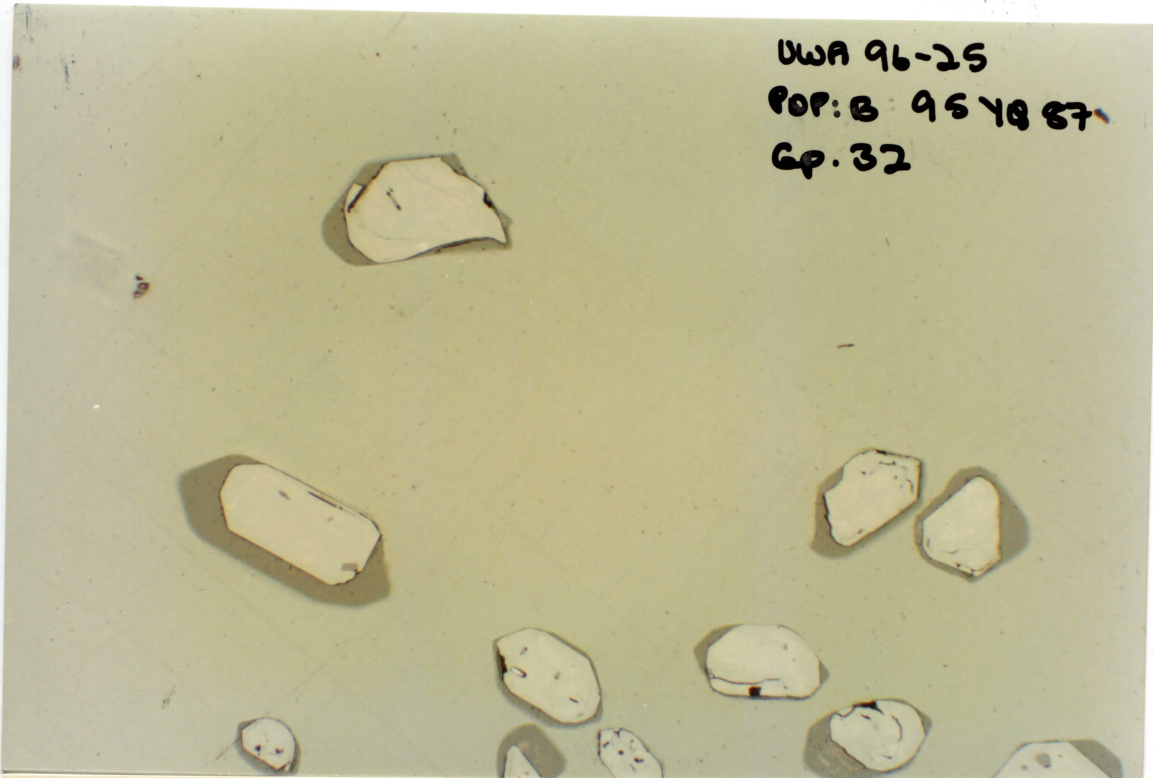
UWA 96-25
POP: B 954887
Ep. 30



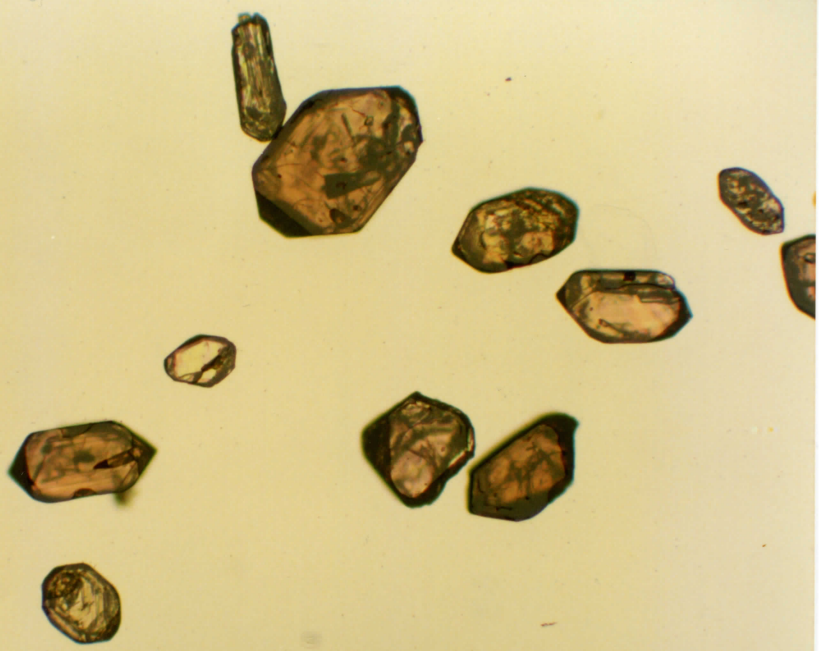
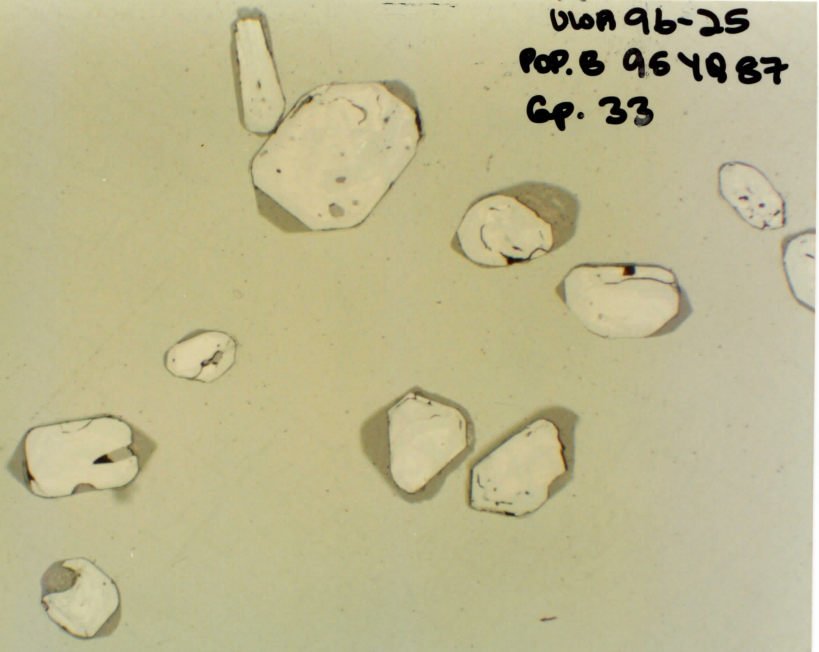
UWA 96-25
POP: B 96 YQ 87
GP. 31



UWA 96-25
POP: B 9548 87
Gp. 32



UWA 96-25
POP. B 964987
GP. 33



UWA 96-25
POP: B 96 40 87
CP. 34

