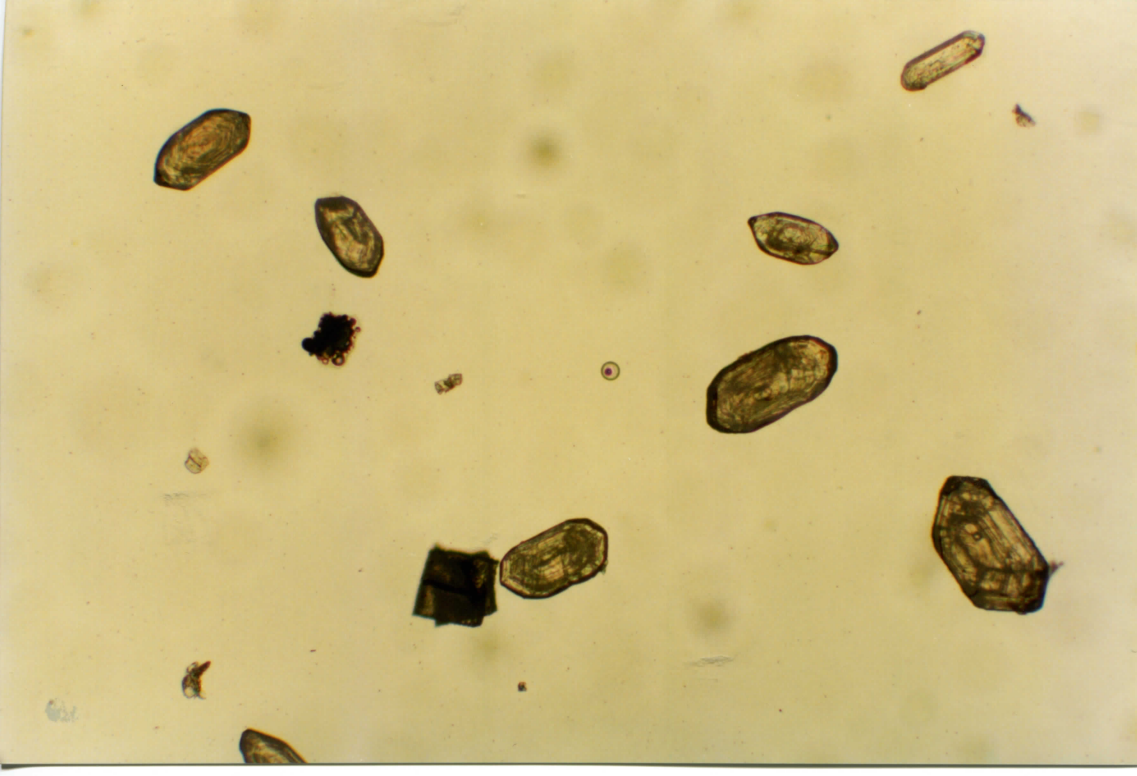
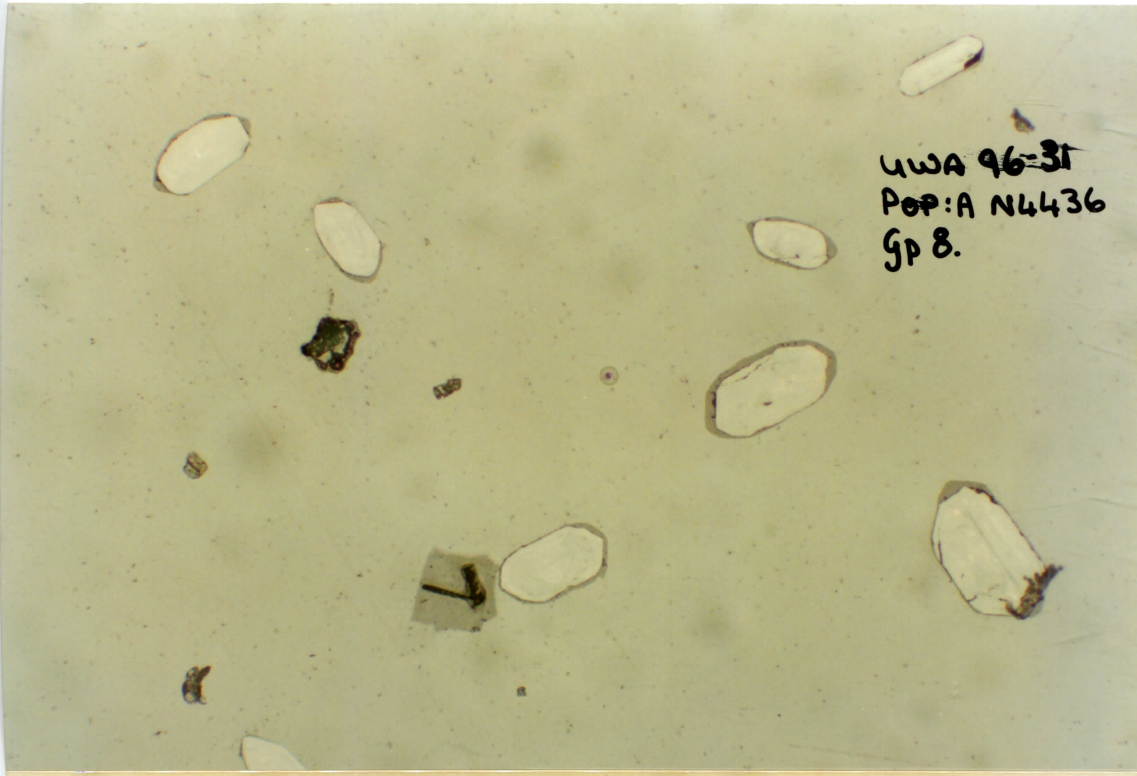
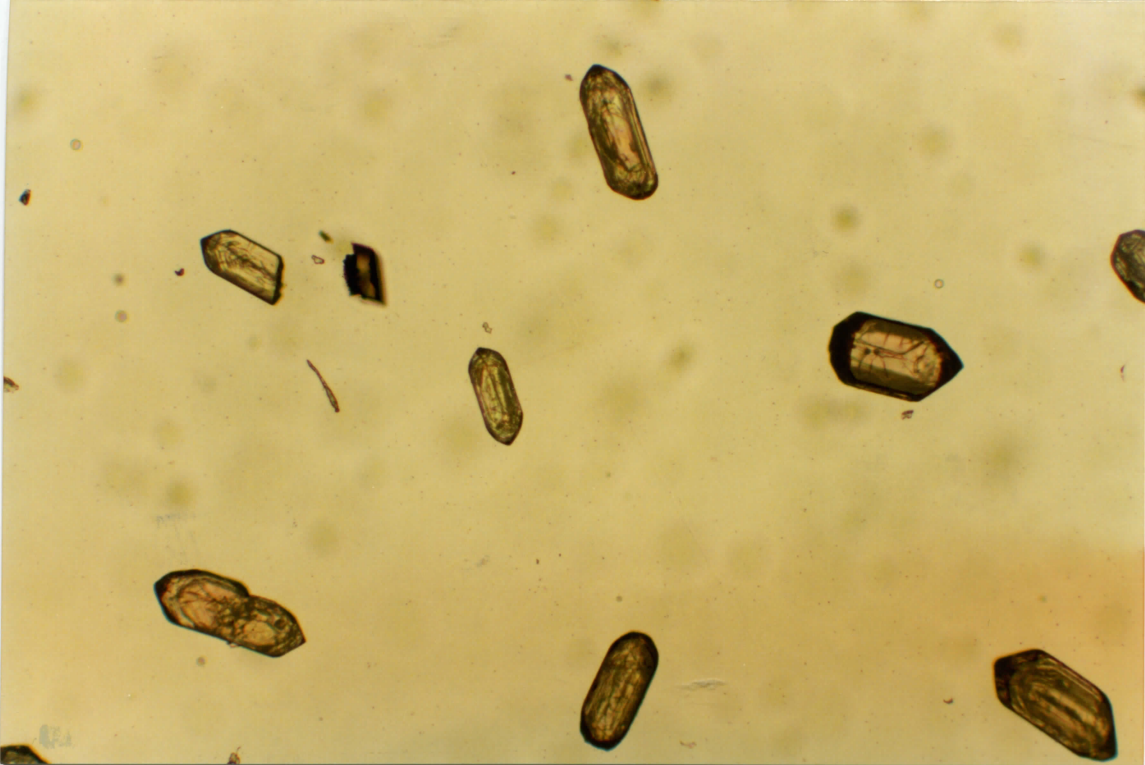
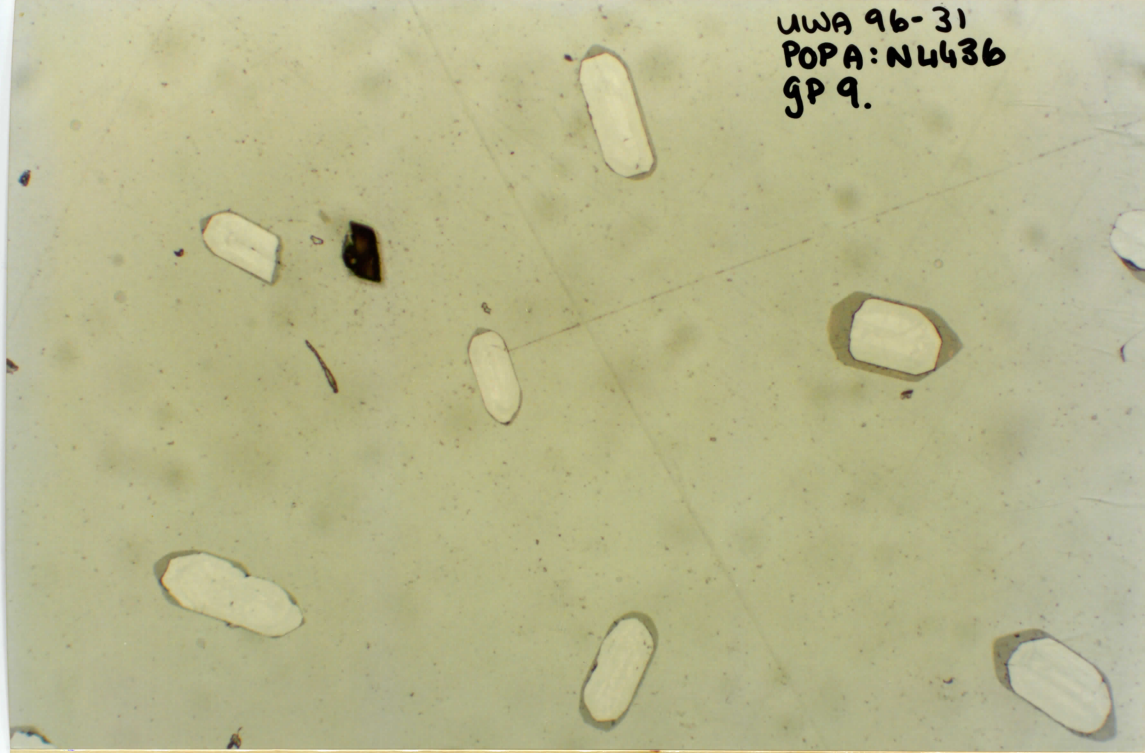


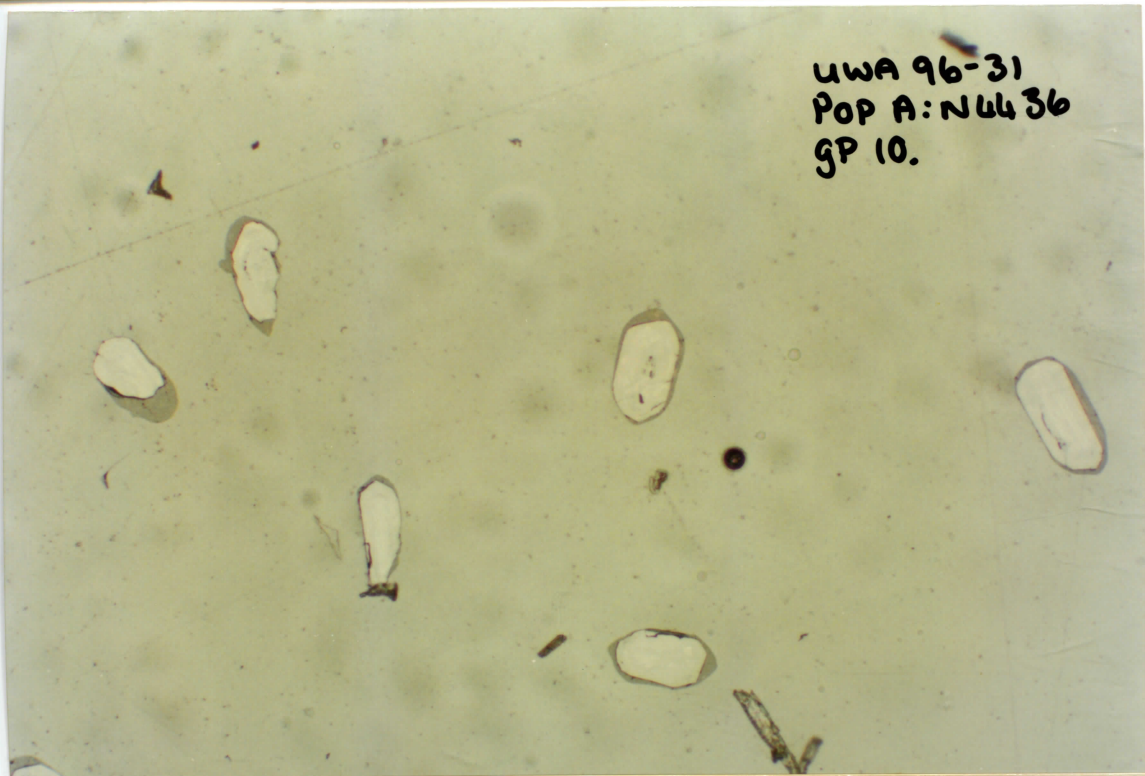
UWA 96-31  
POP: A N4436  
gp 8.



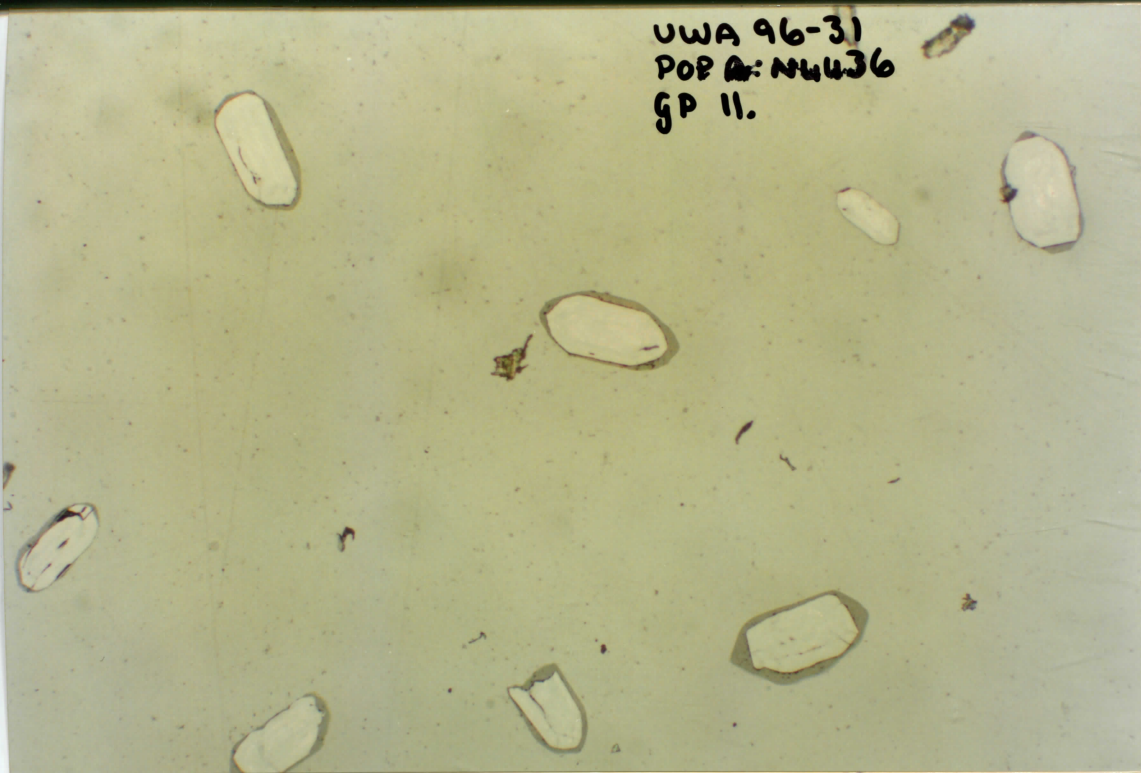
UWA 96-31  
POPA: NU436  
GP 9.



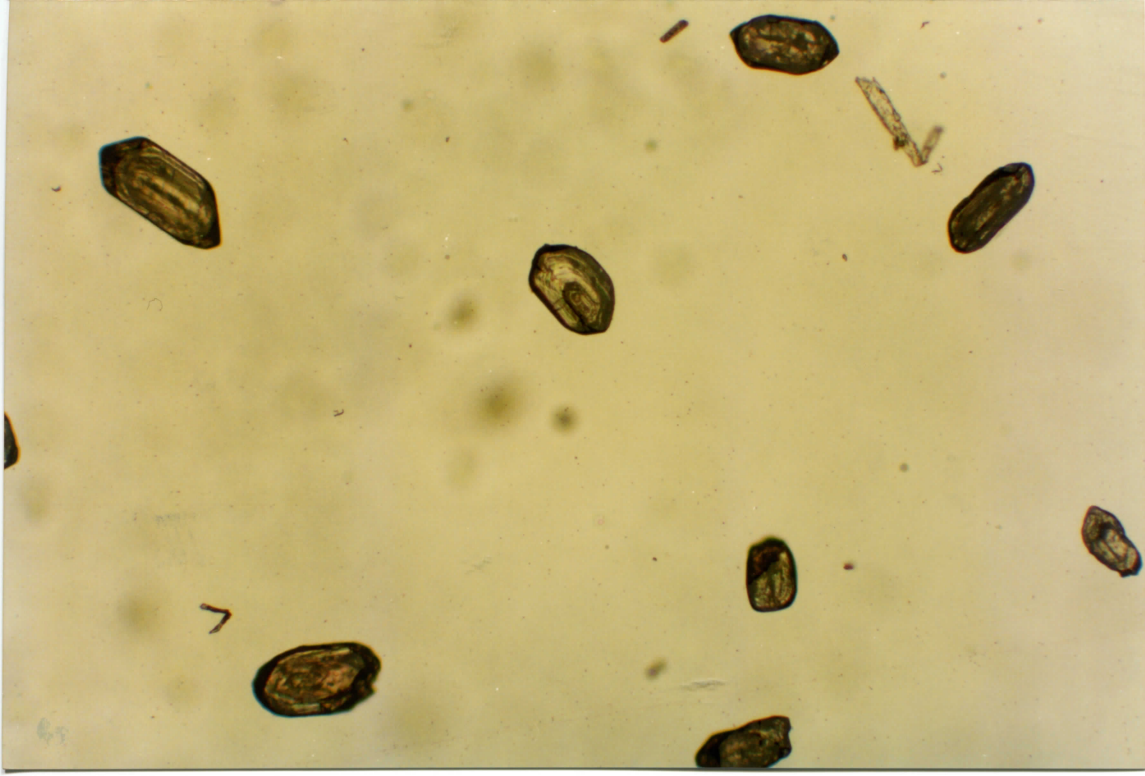
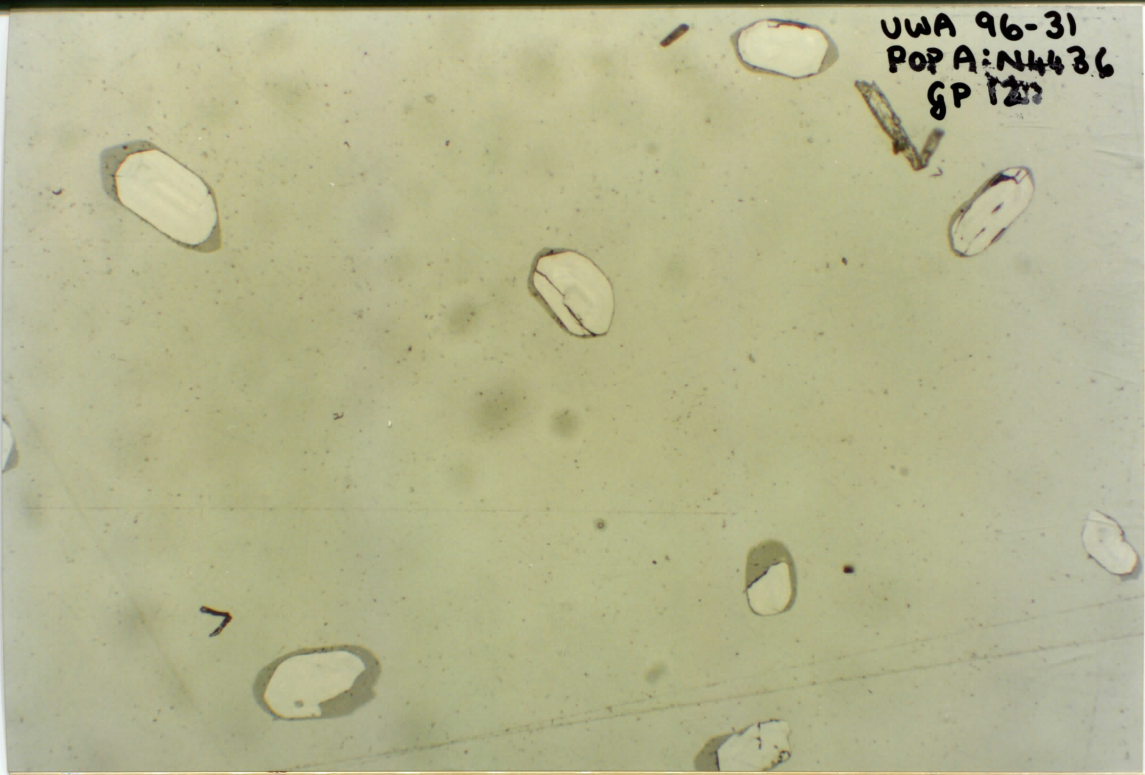
UWA 96-31  
POP A: N4436  
GP 10.



UWA 96-31  
POPA: NH436  
GP II.

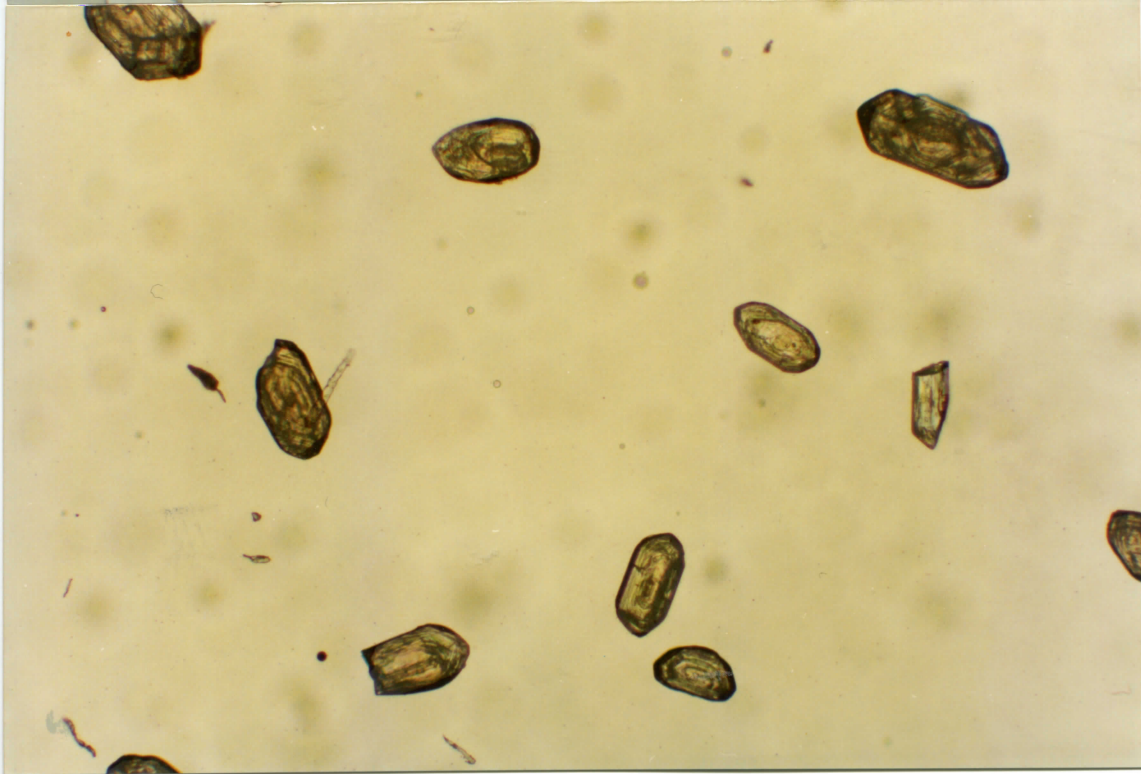
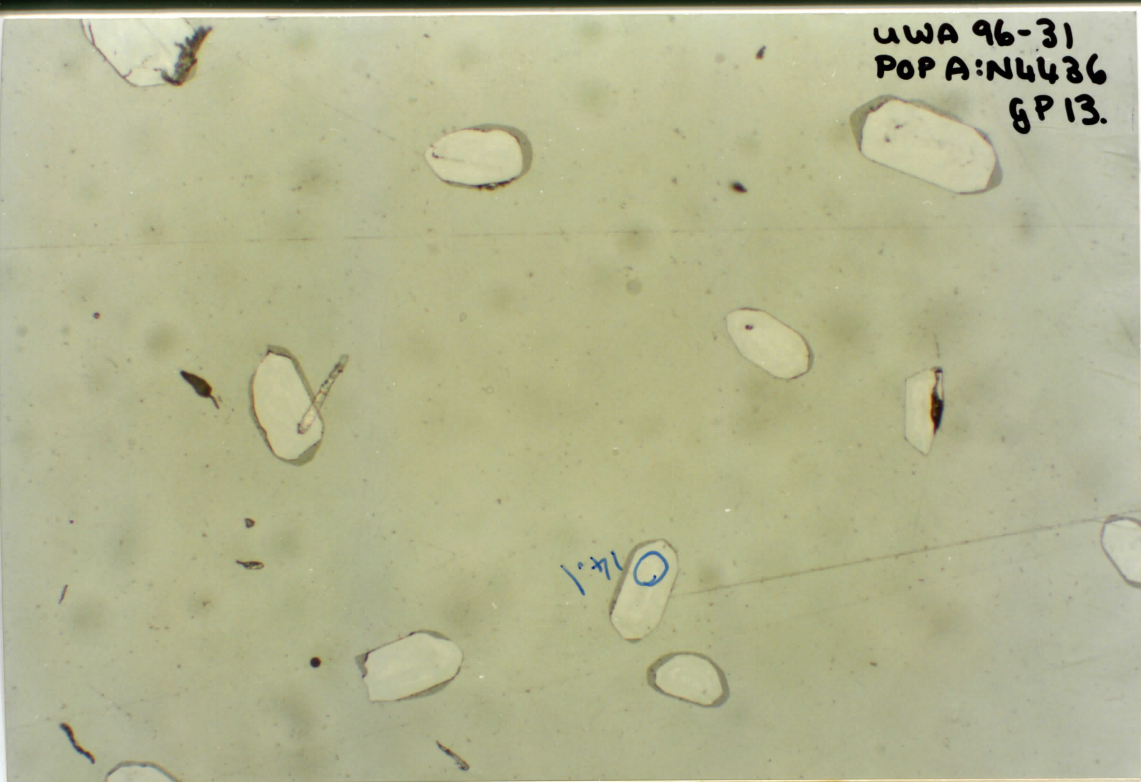


UWA 96-31  
POP A: N4436  
GP 121

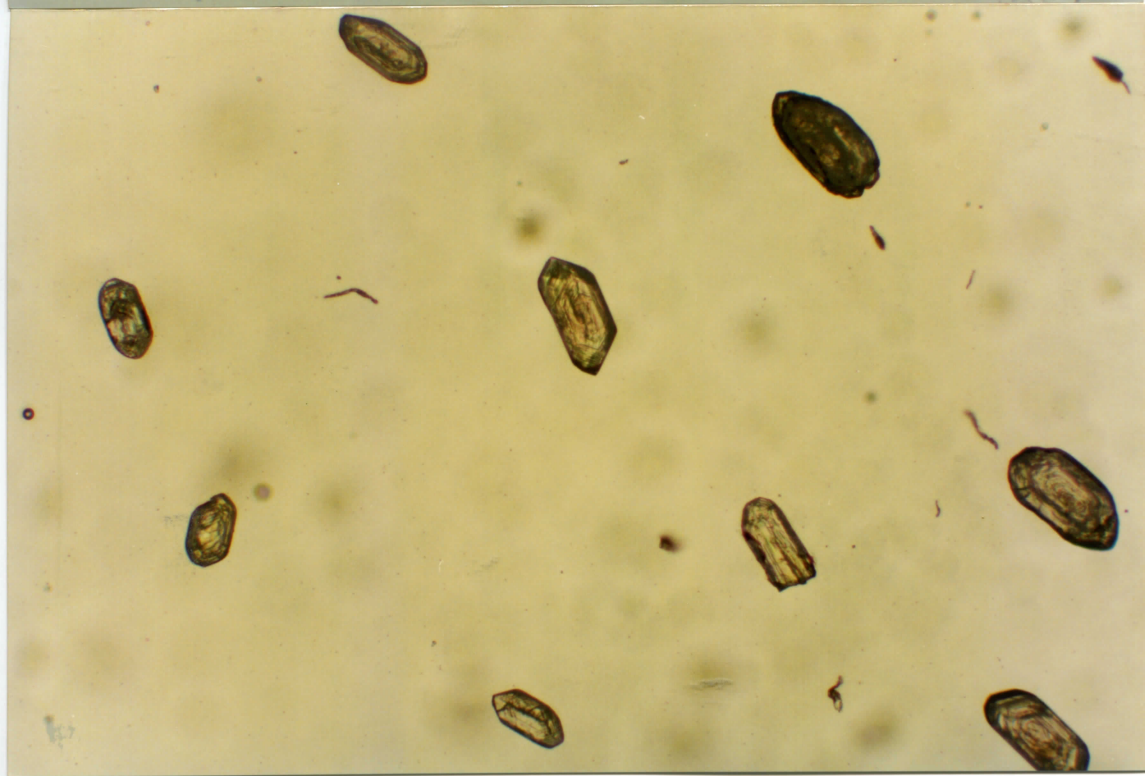
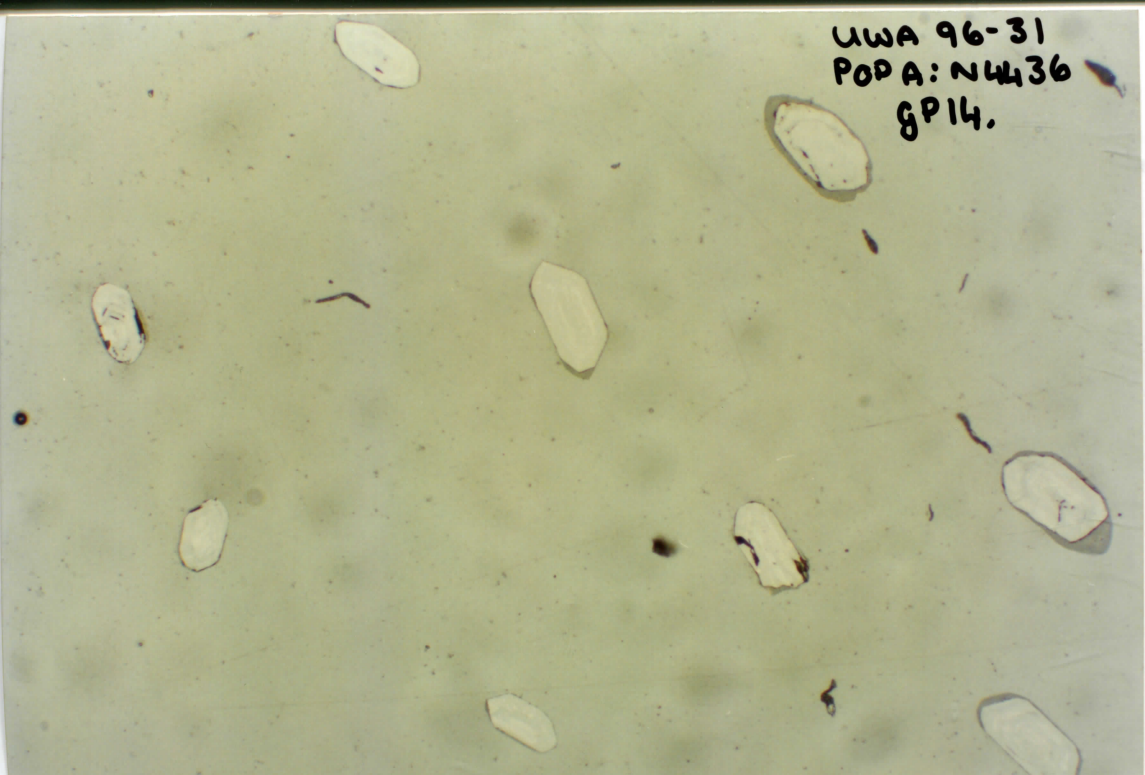


UWA 96-31  
POP A: N4436  
GP 13.

1.41



UWA 96-31  
POPA: N4436  
gp14.



UWA 96-31  
POP ANN 4436  
GP 15

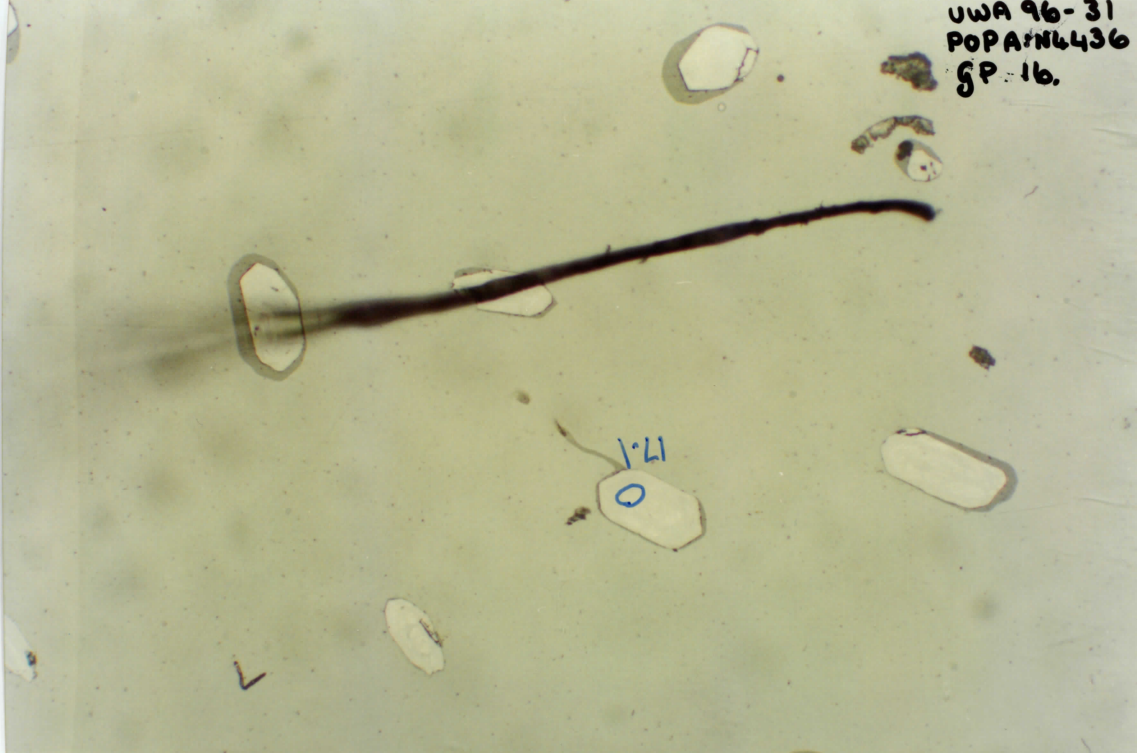
1.11.0

012.1

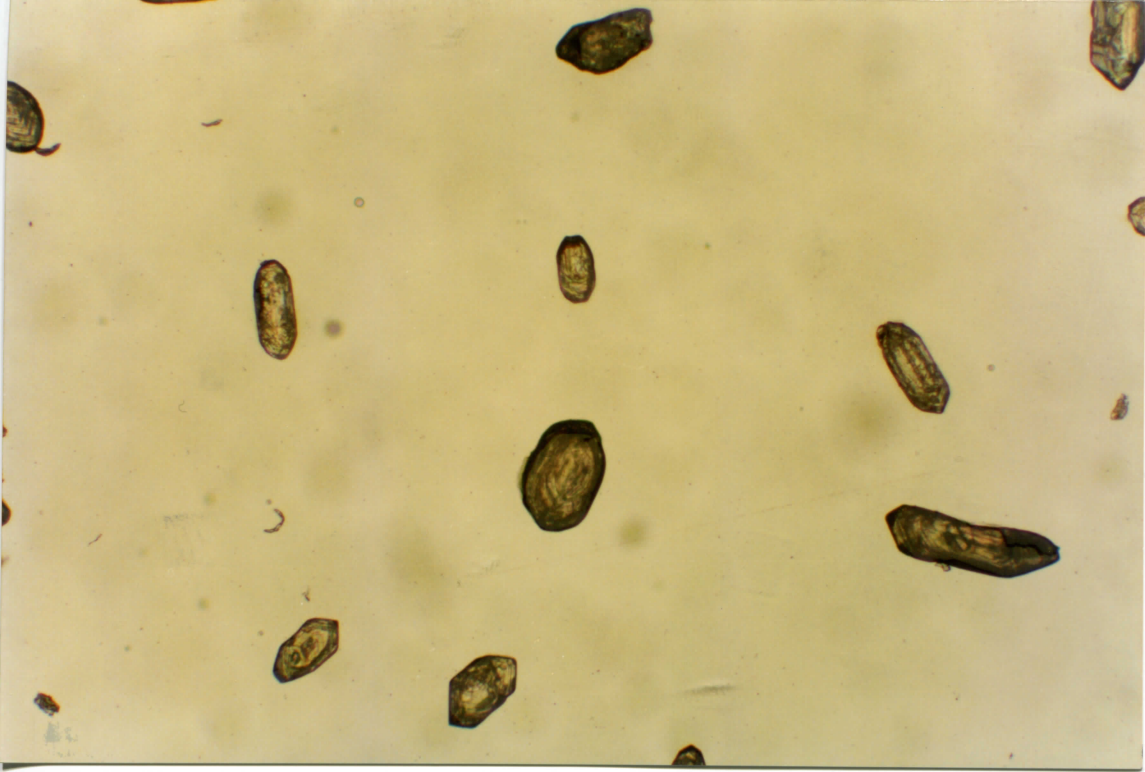
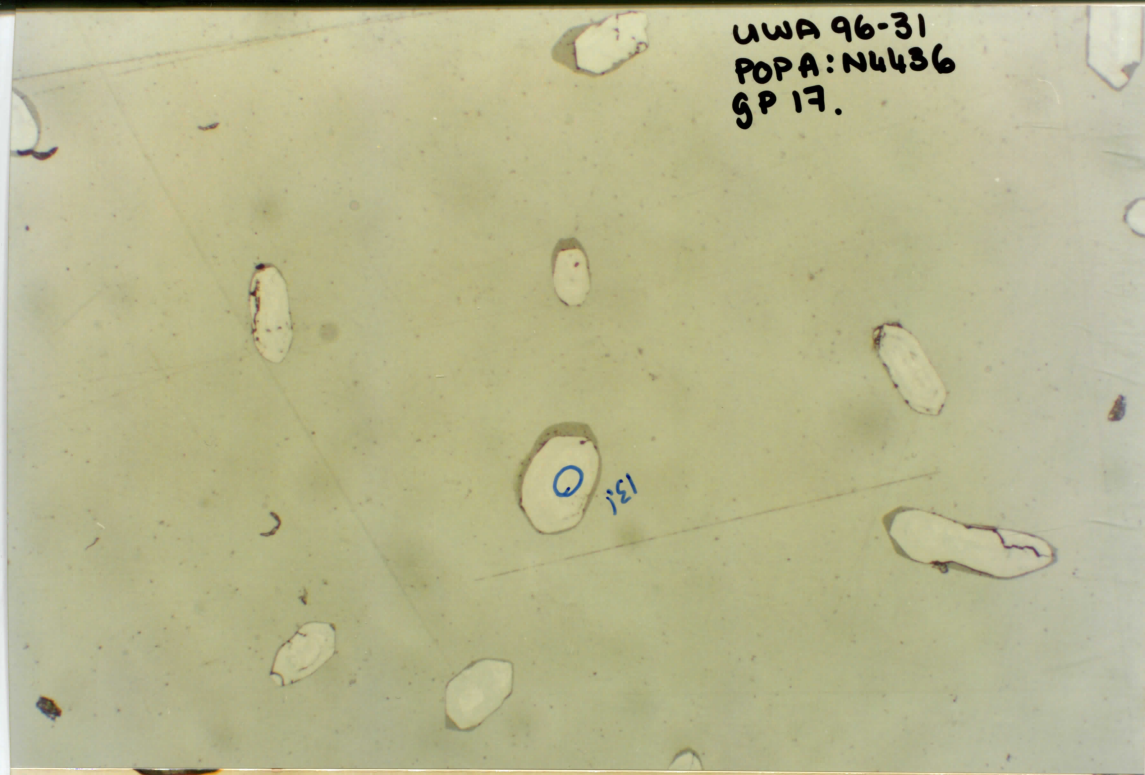




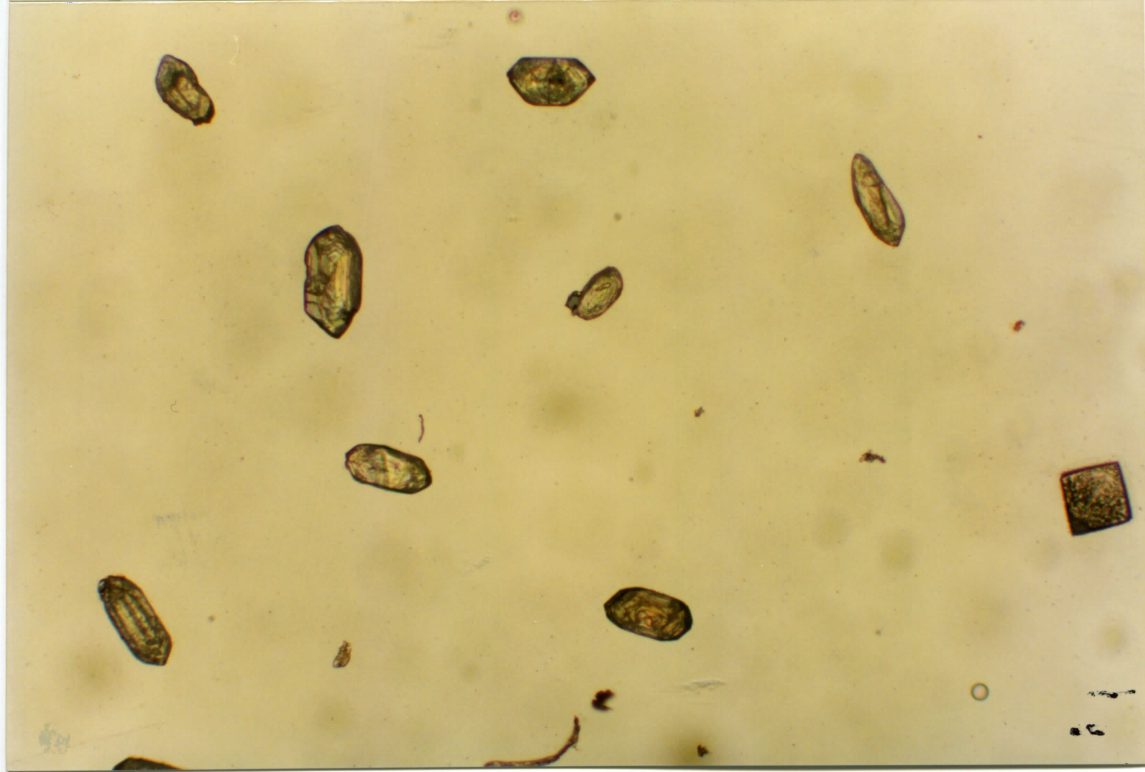
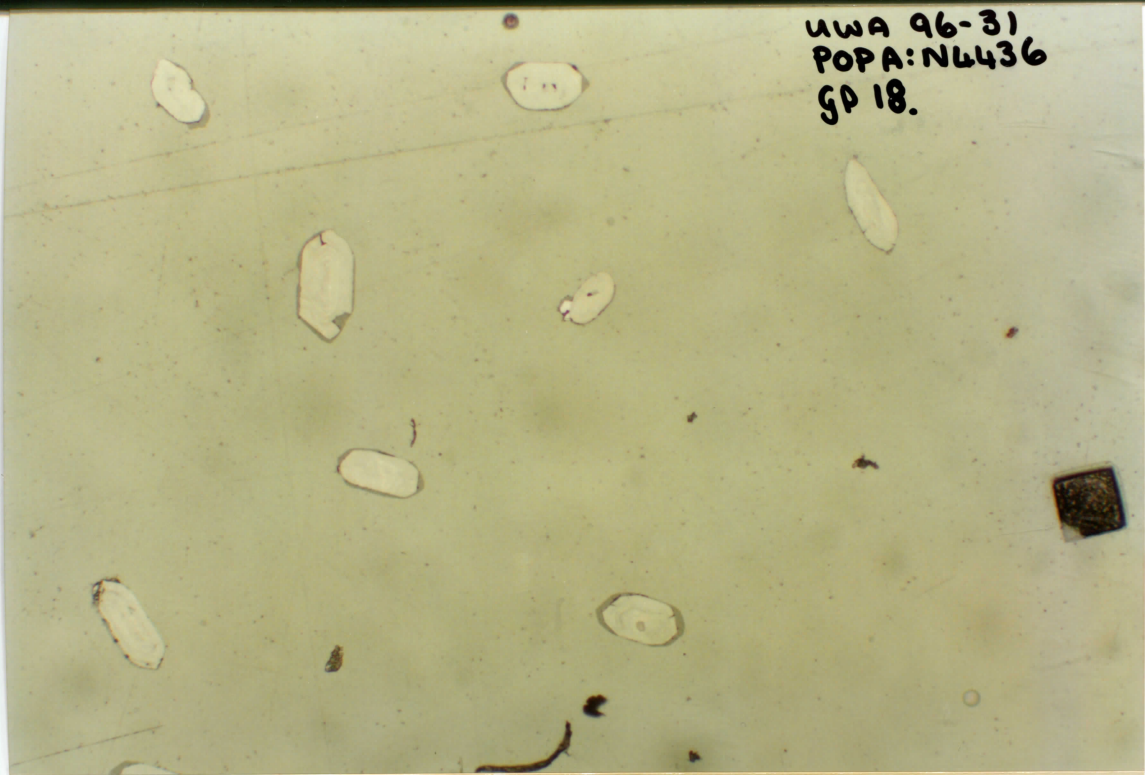
UWA 96-31  
POPARN 436  
GP-16.



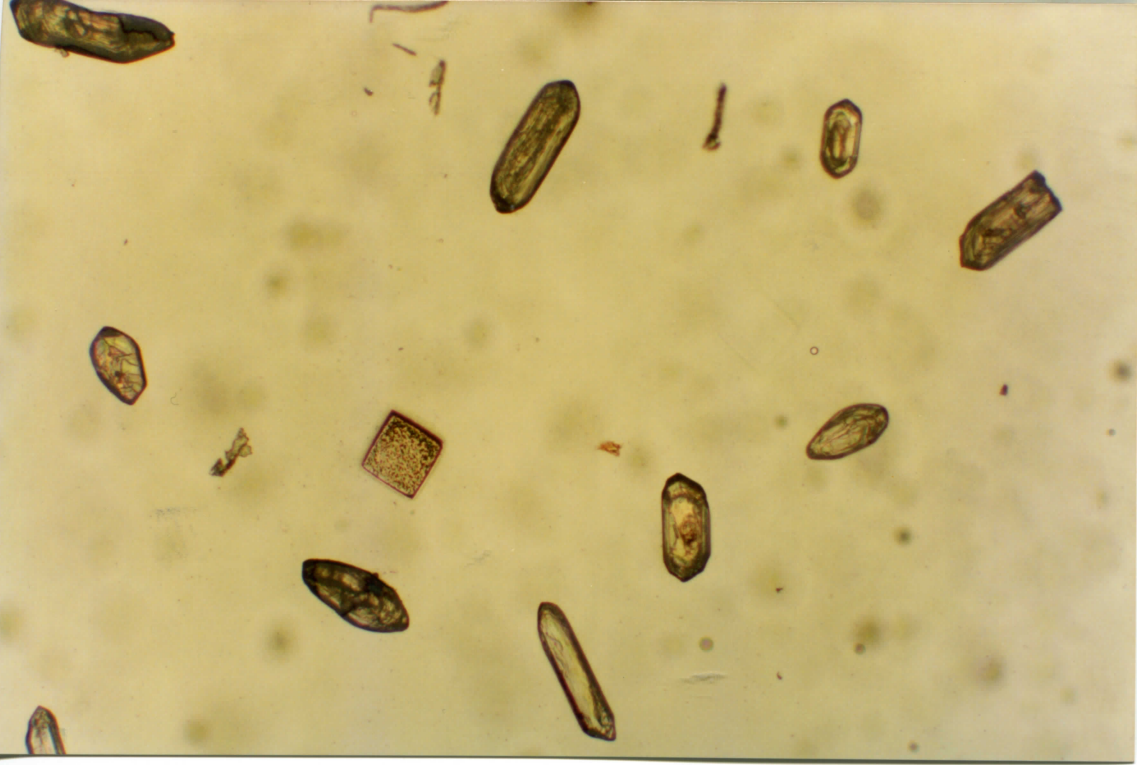
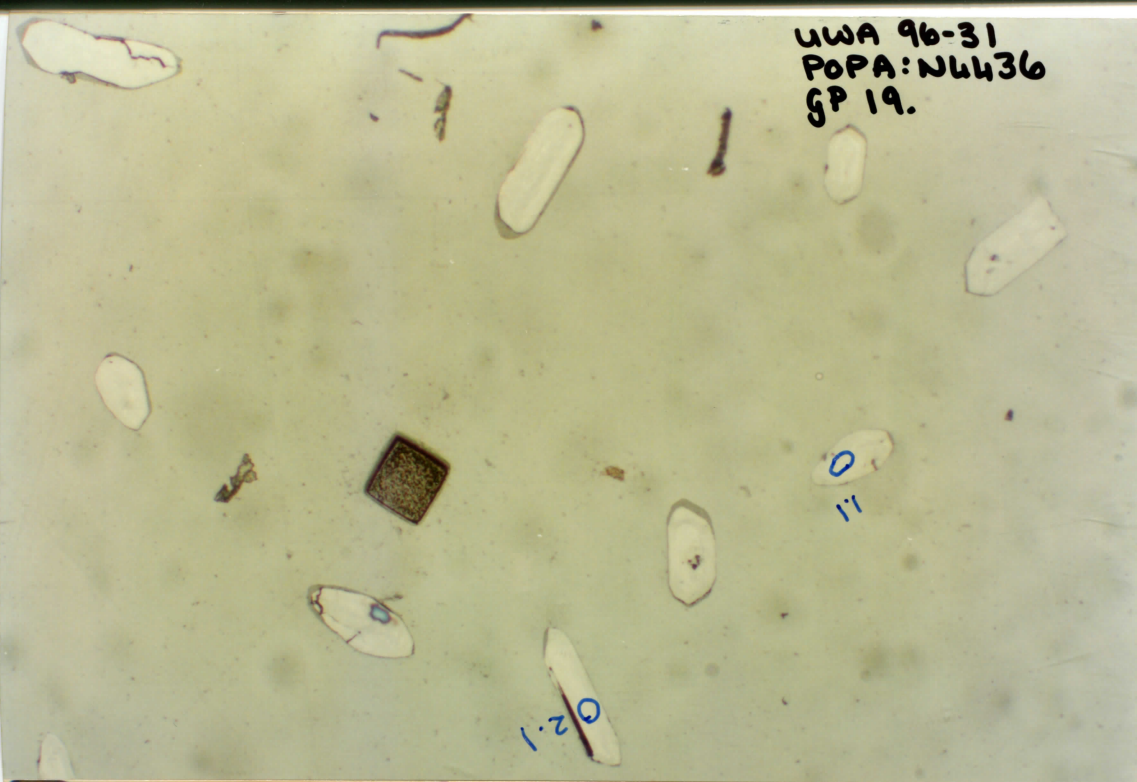
UWA 96-31  
POPA: N4436  
GP 17.



UWA 96-31  
POPA: N4436  
GP 18.



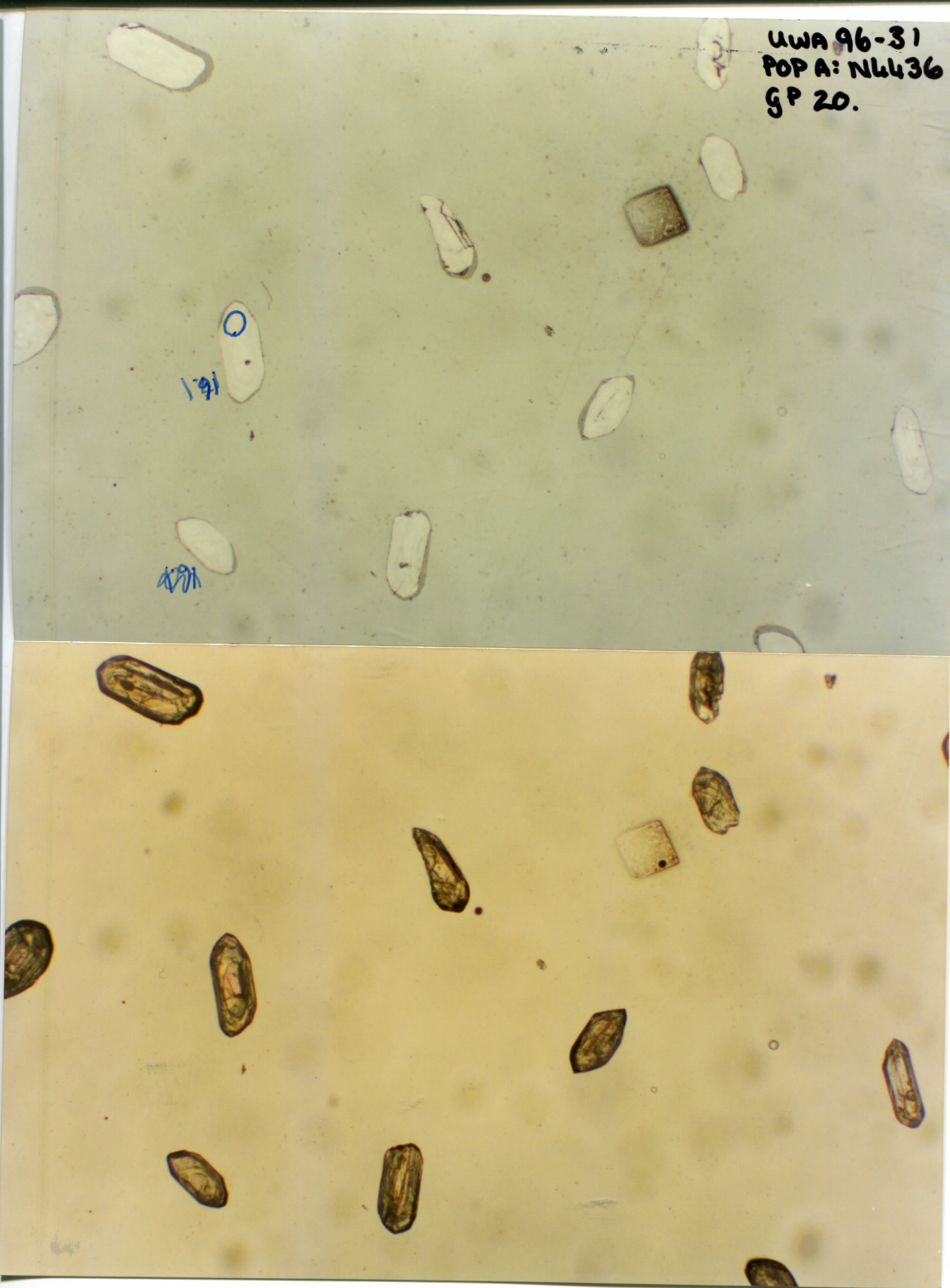
UWA 96-31  
POPA: N4436  
GP 19.



UWA 96-31  
POPA: NL436  
GP 20.

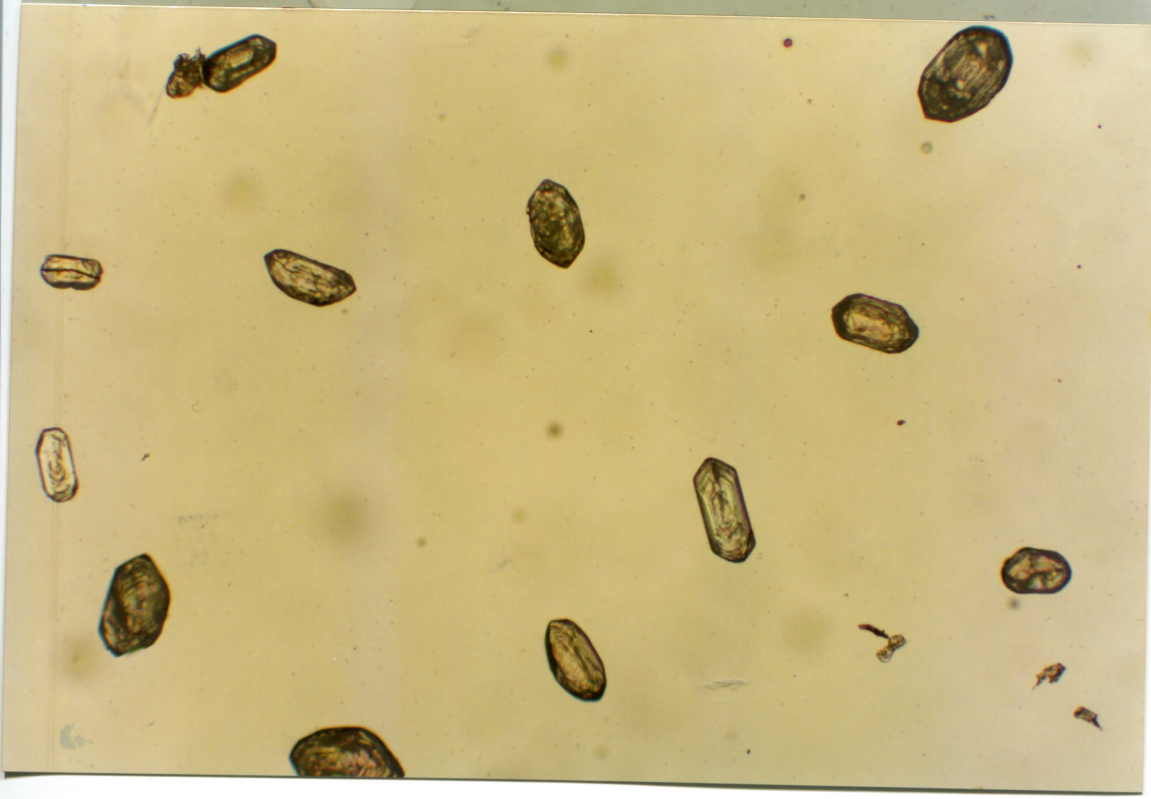
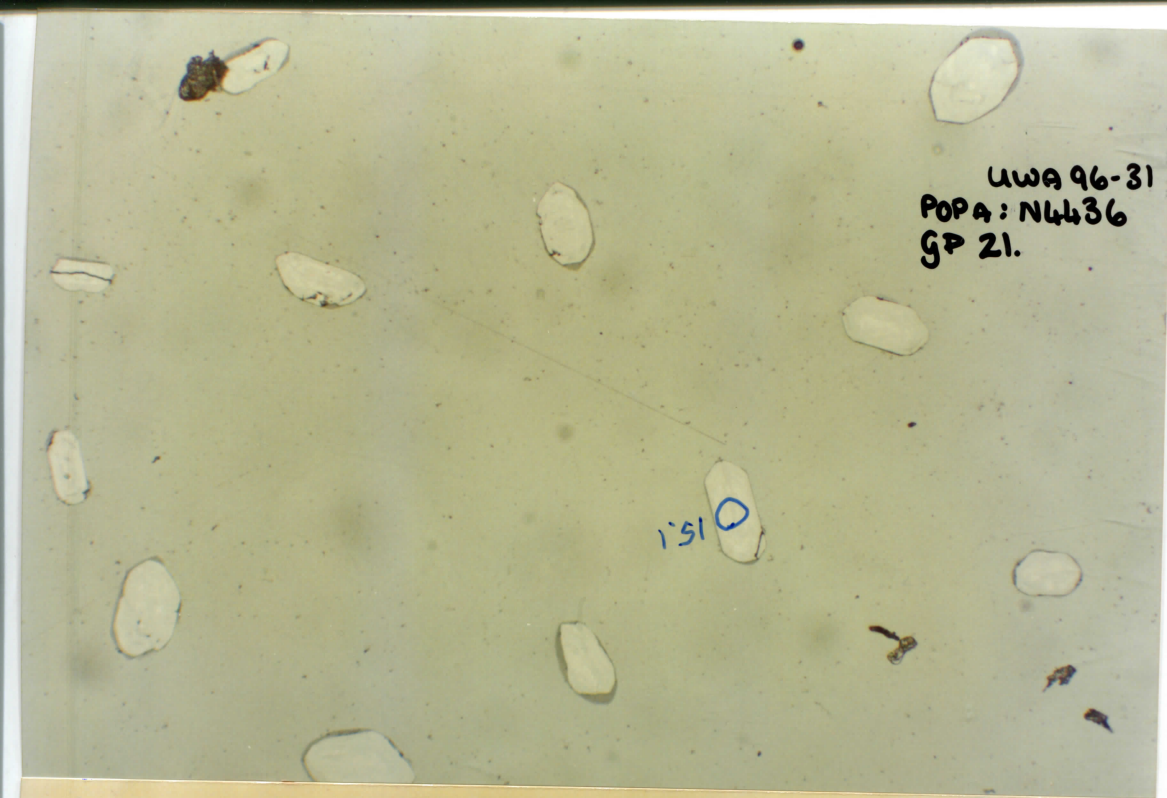
191

191

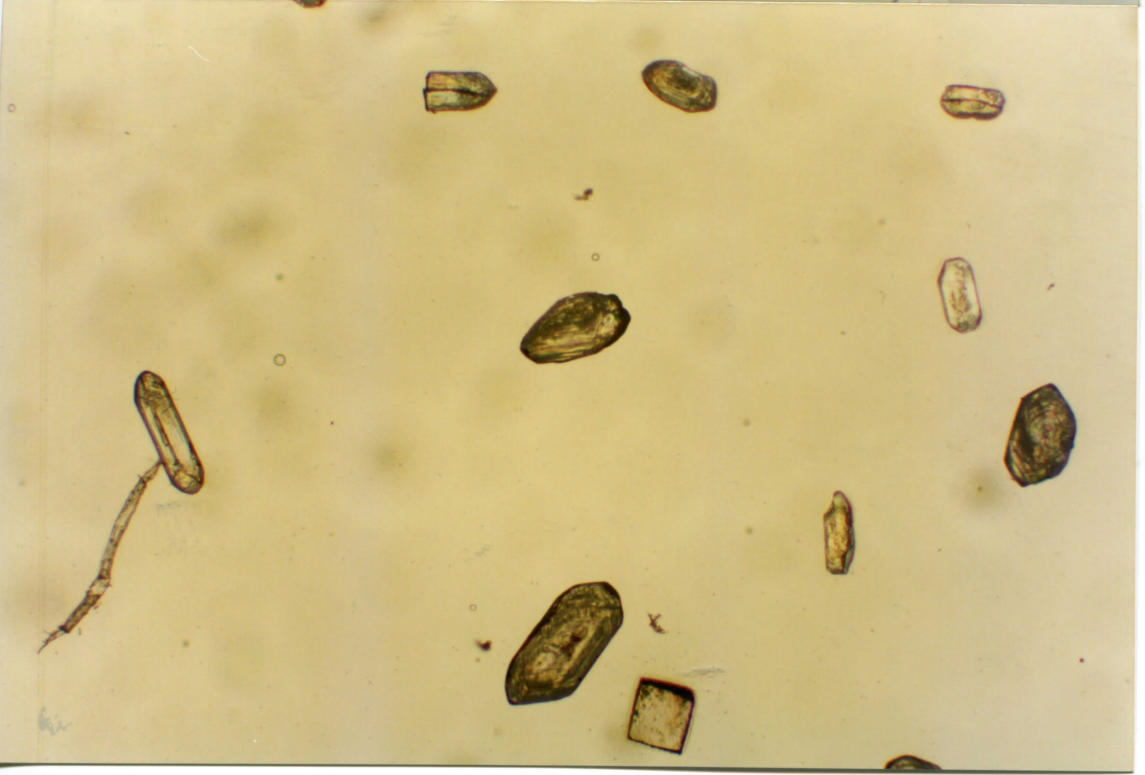
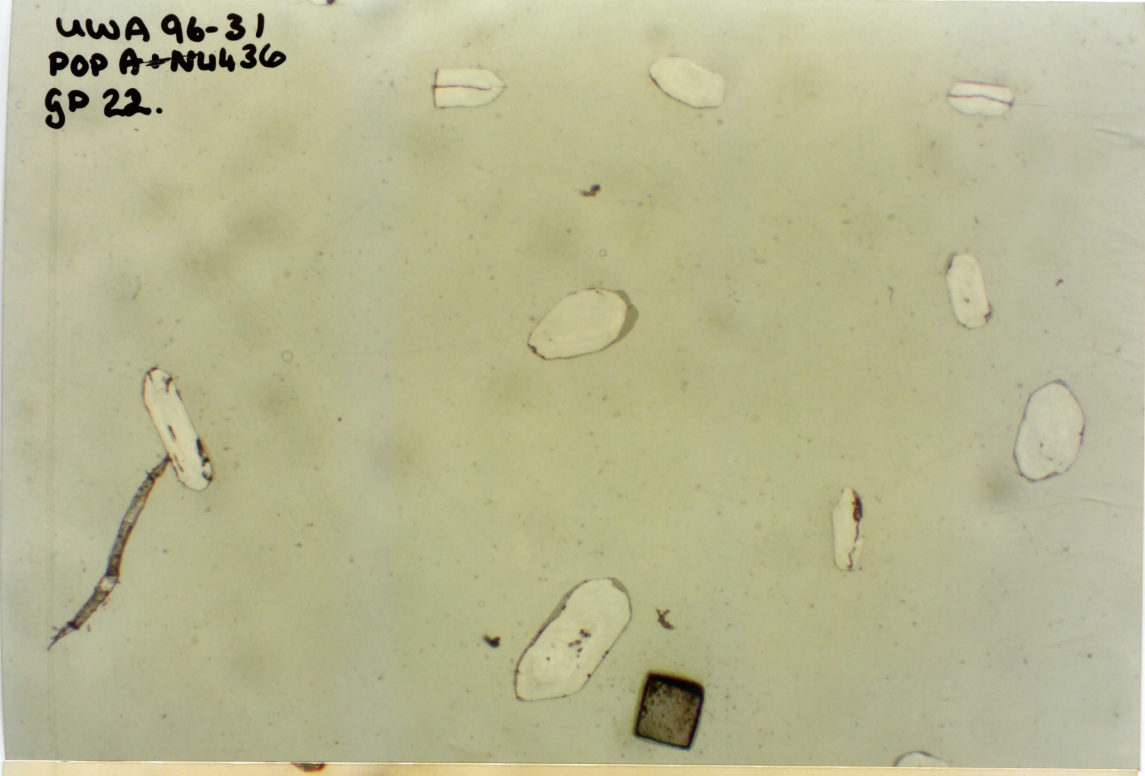


UWA 96-31  
POPA: N4436  
GP 21.

1510

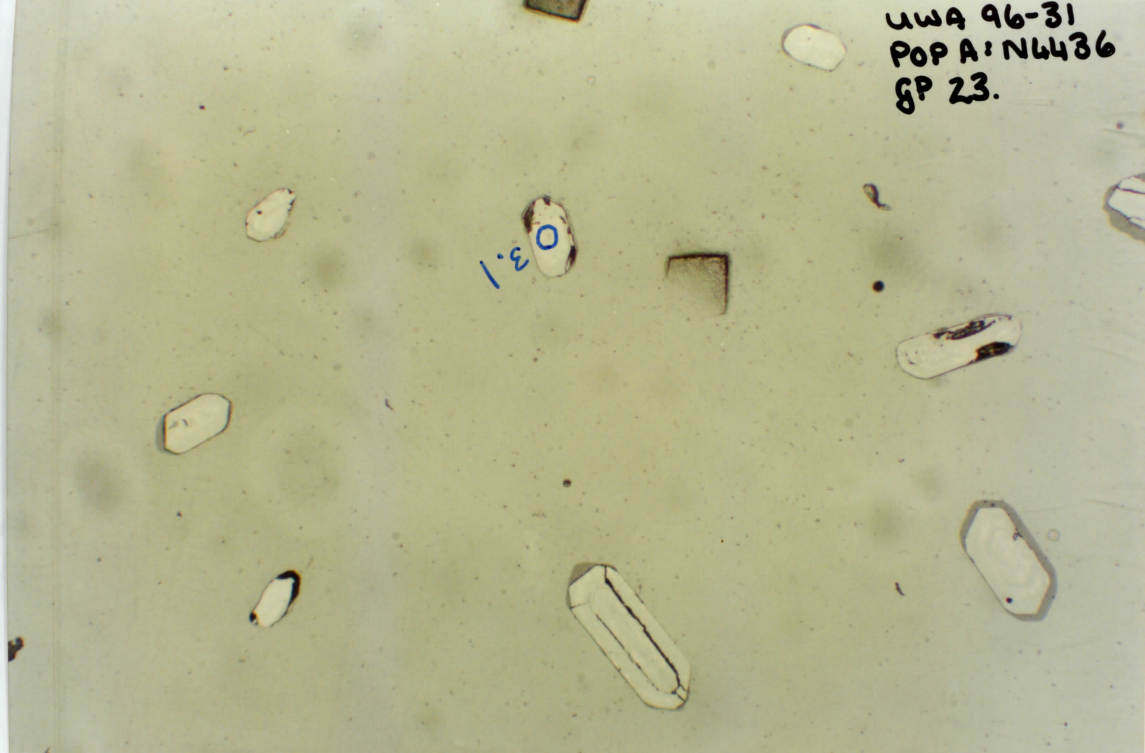


UWA 96-31  
POP A+NU436  
SP 22.



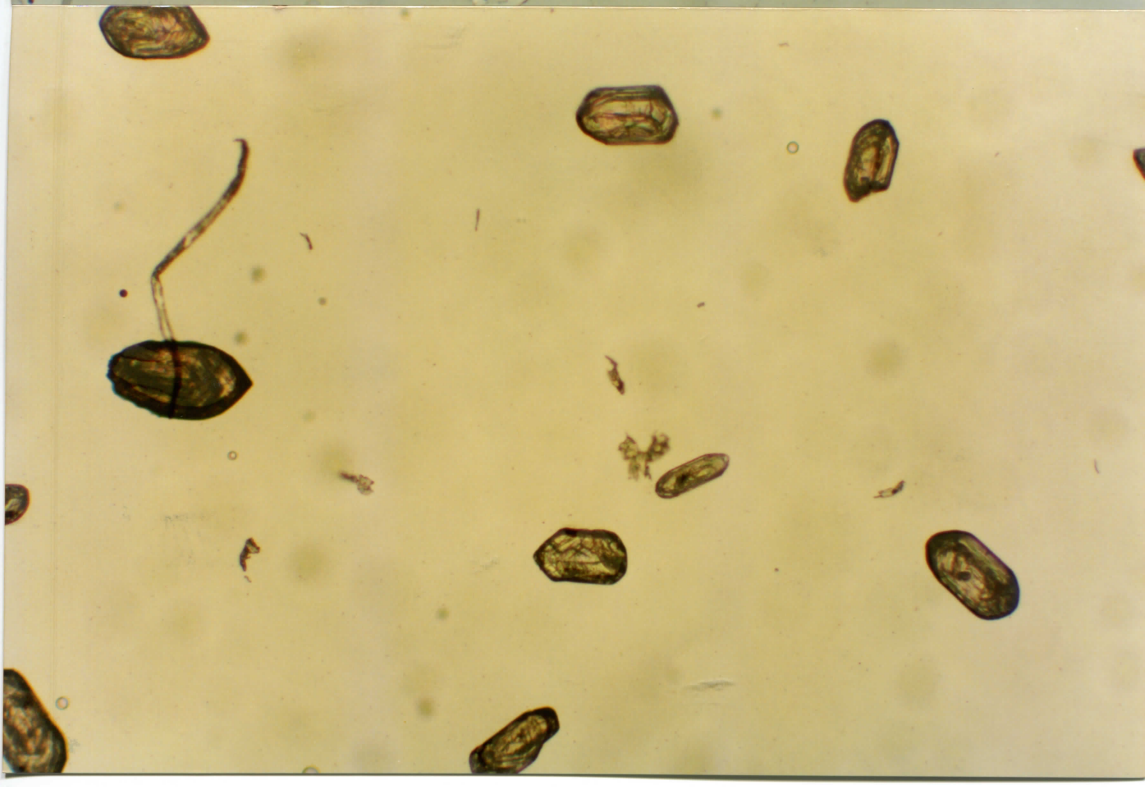
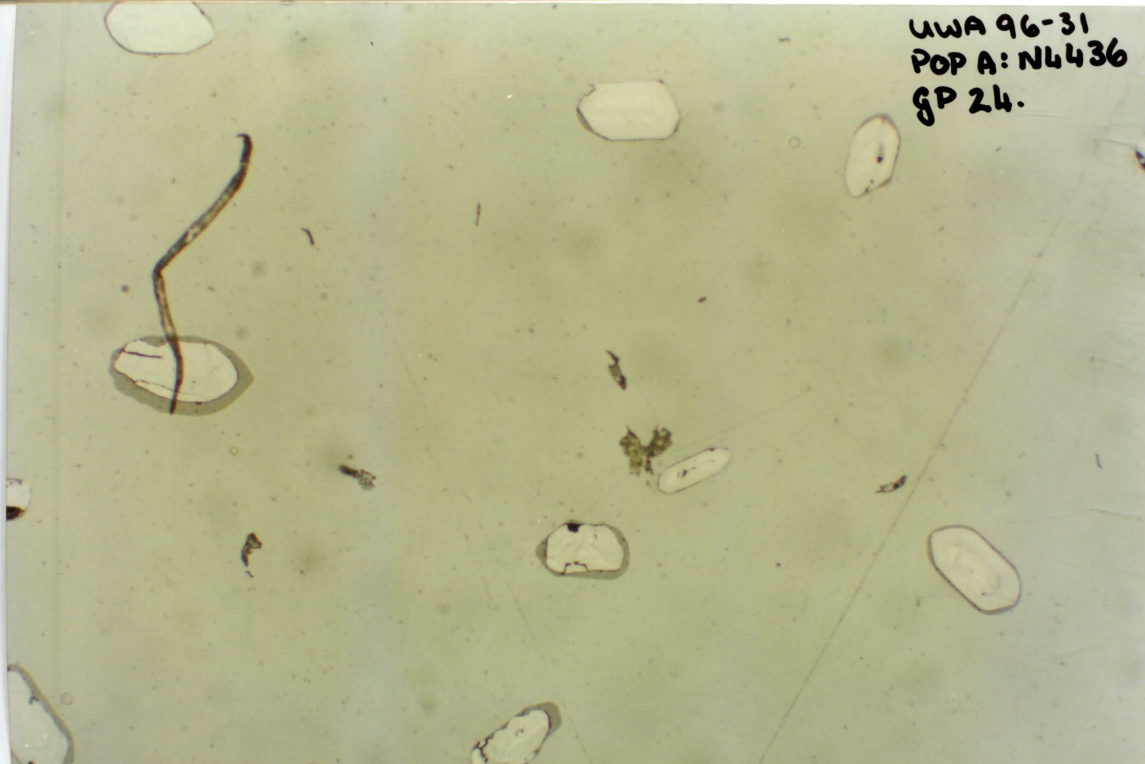
UWA 96-31  
POP A: N6436  
GP 23.

03.1

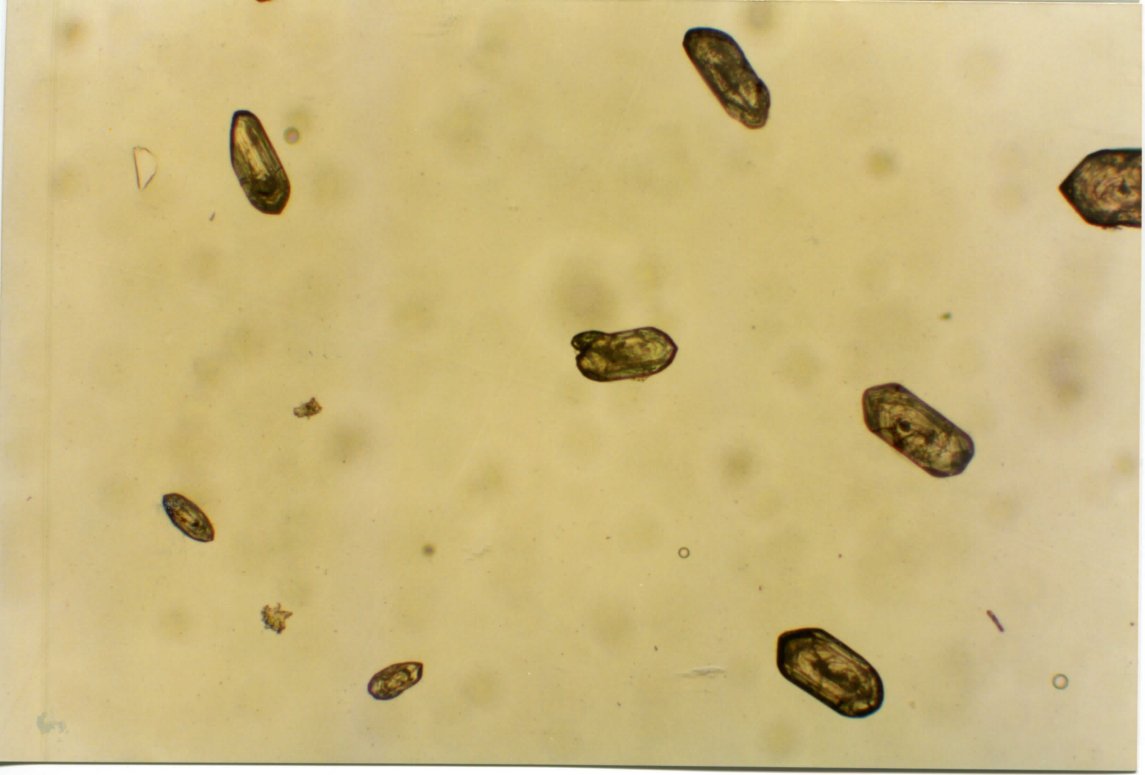
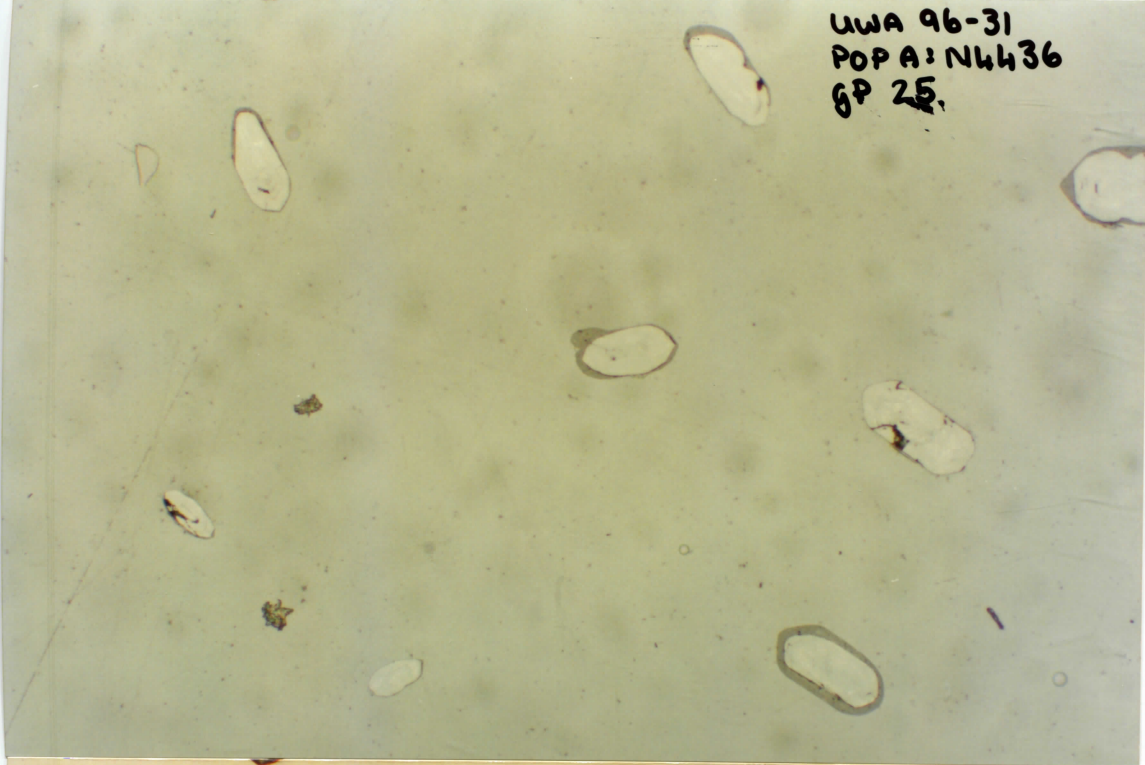




UWA 96-31  
POP A: N4436  
GP 24.



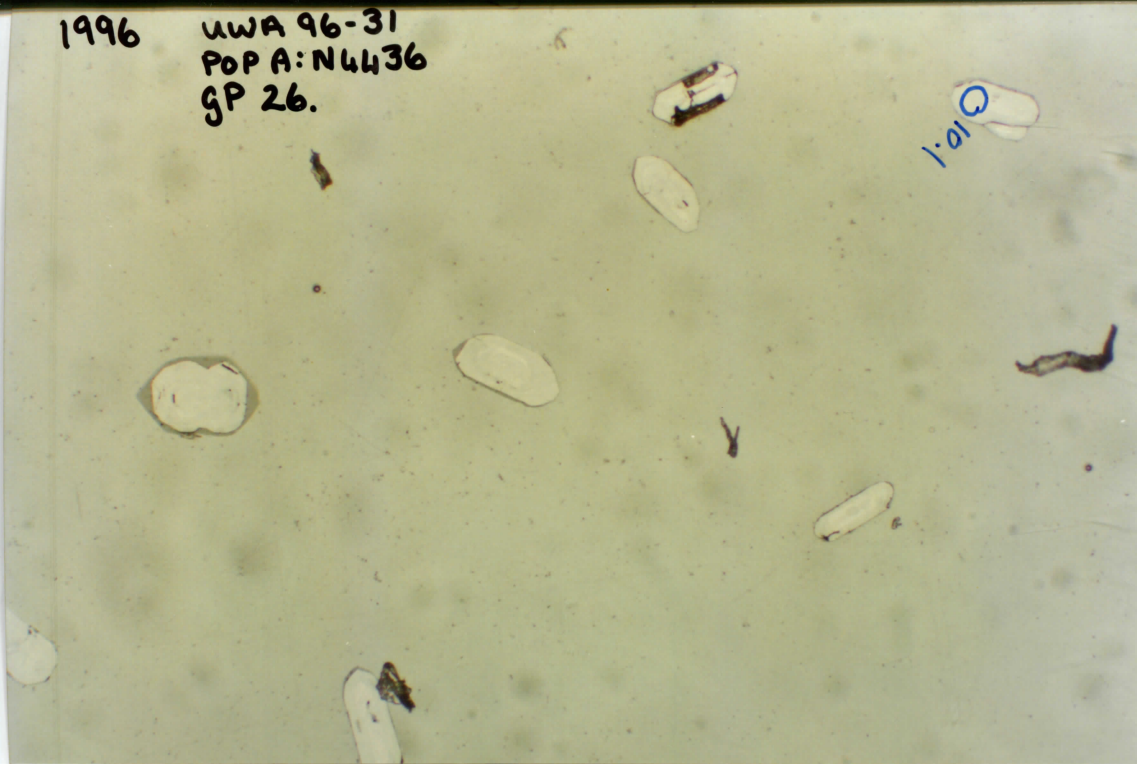
UWA 96-31  
POPA: NH436  
GP 25.



1996

UWA 96-31  
POP A: N4436  
GP 26.

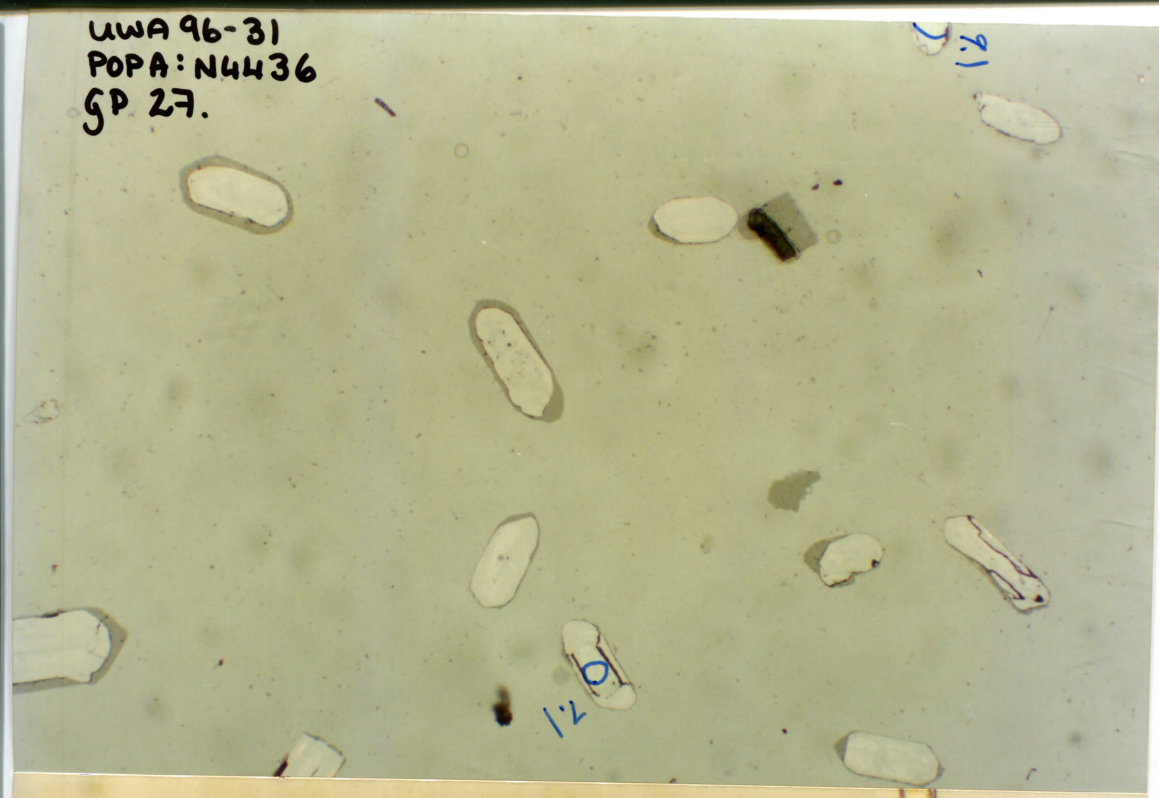
Q101



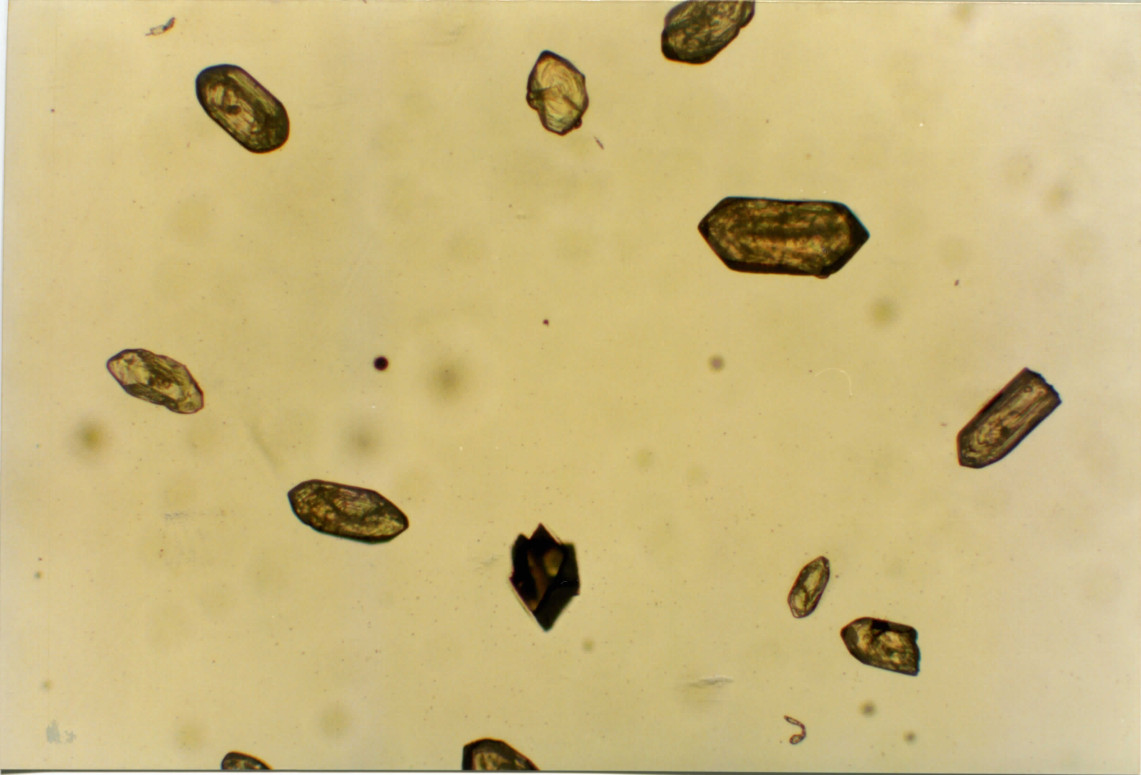
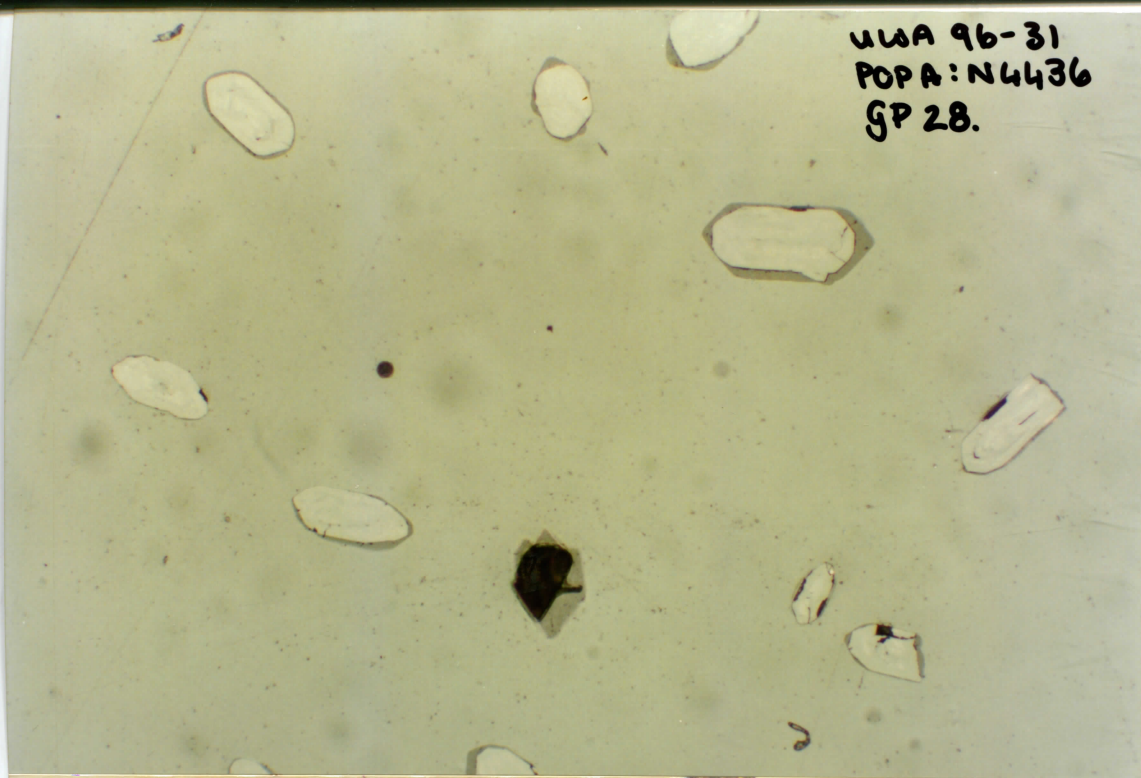
UWA 96-31  
POPA: N4436  
SP 27.

9.1

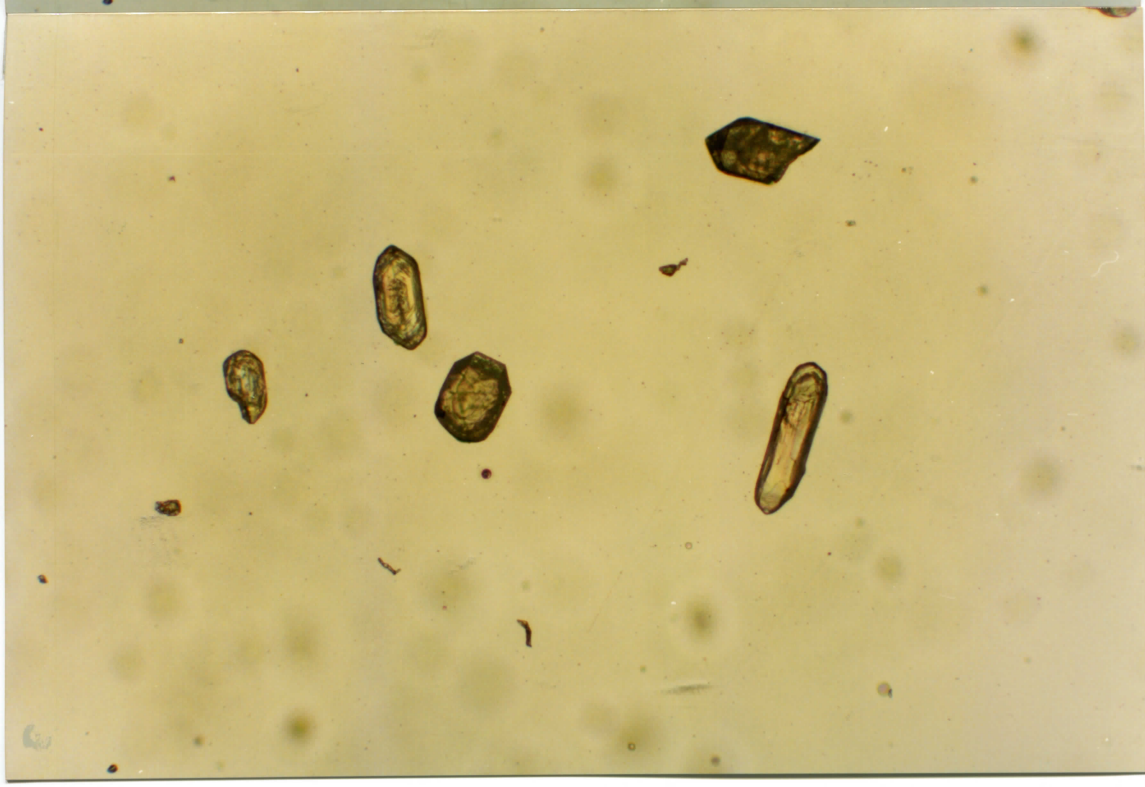
120



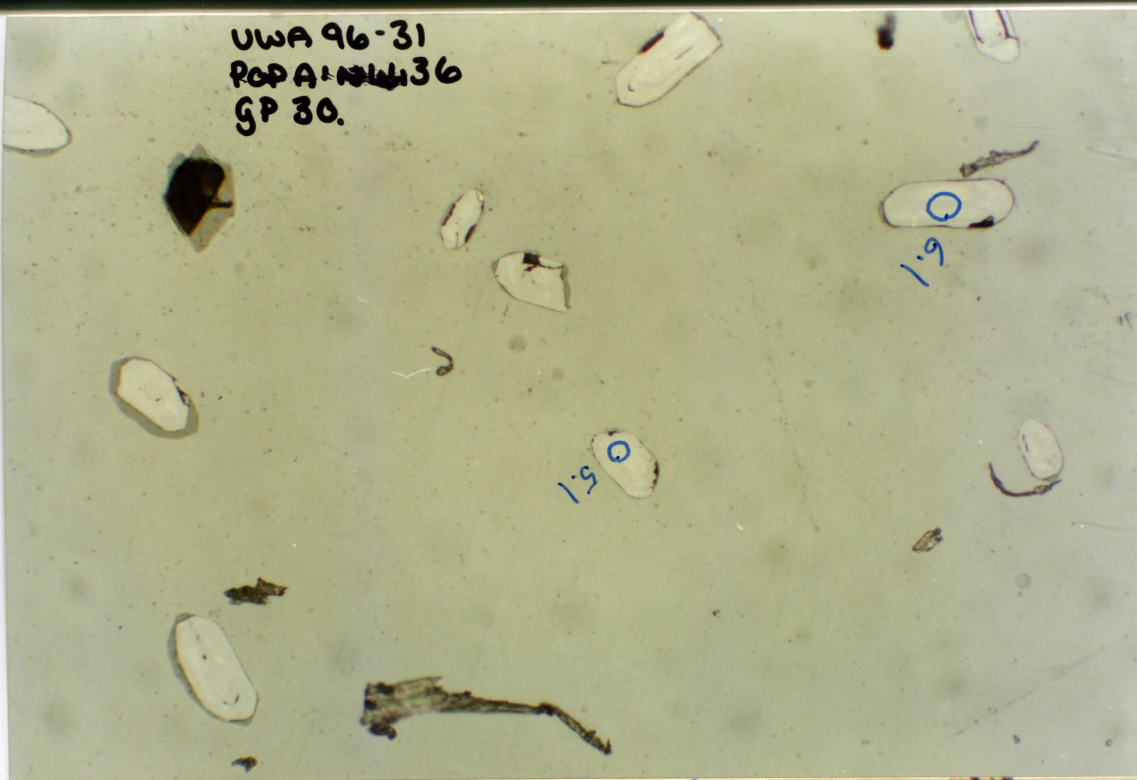
UWA 96-31  
POPA: N4436  
GP 28.



UWA 96-31  
POPA: N4486  
GP 29



UWA 96-31  
POP A: NW 36  
GP 30.



UWA 96-31  
POPA: N4436  
GP 31.

081

