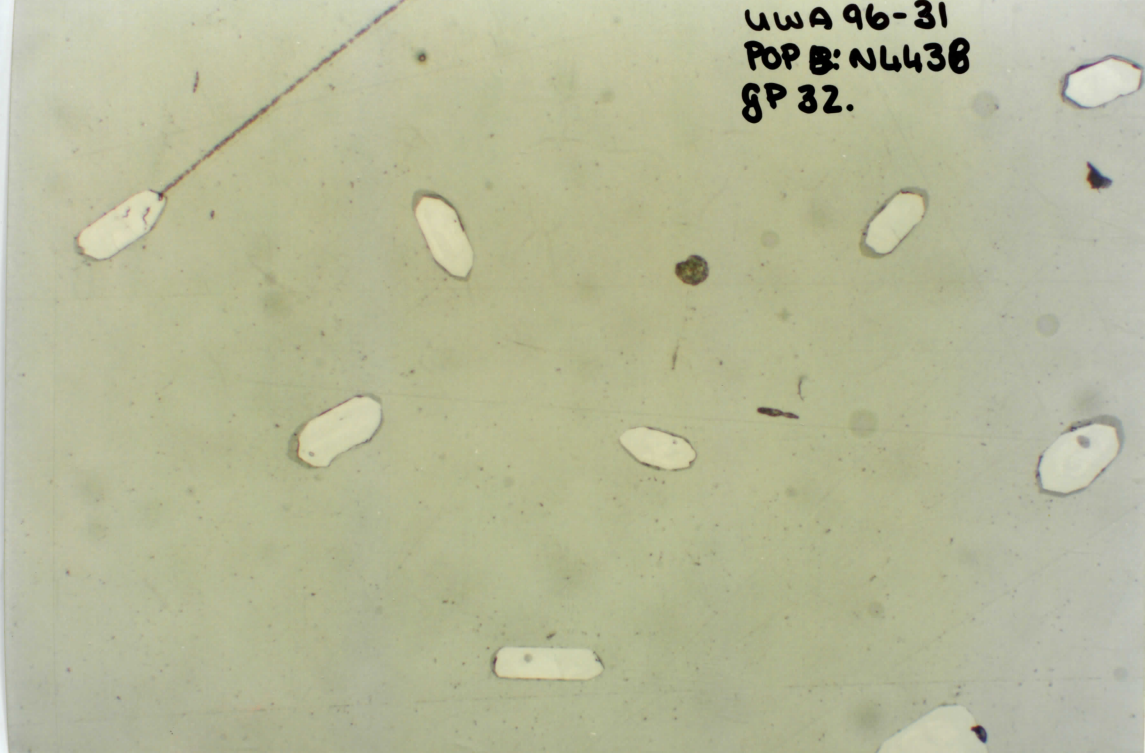
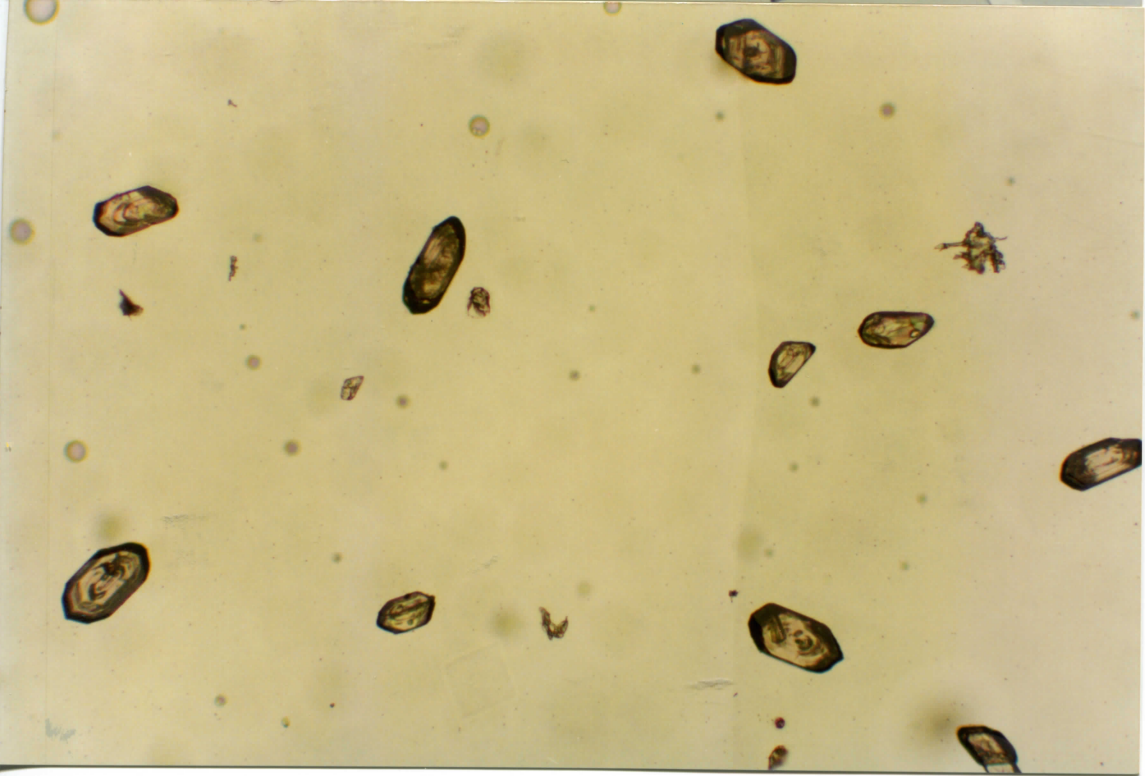
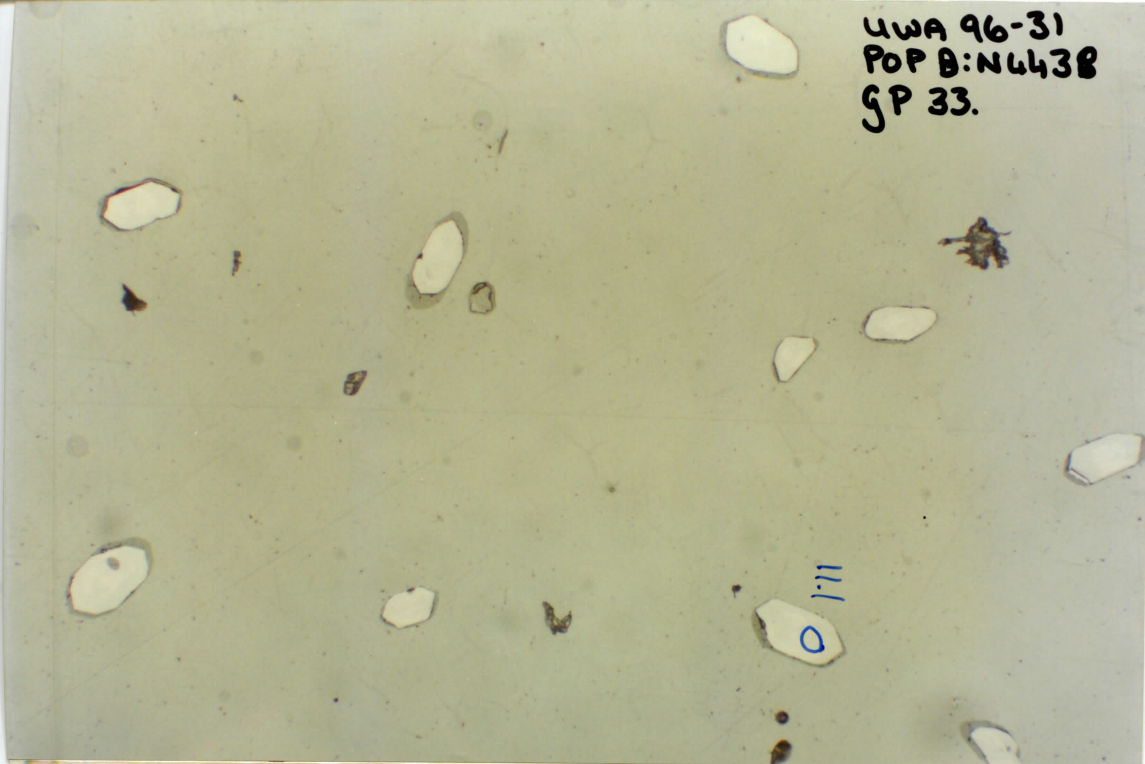


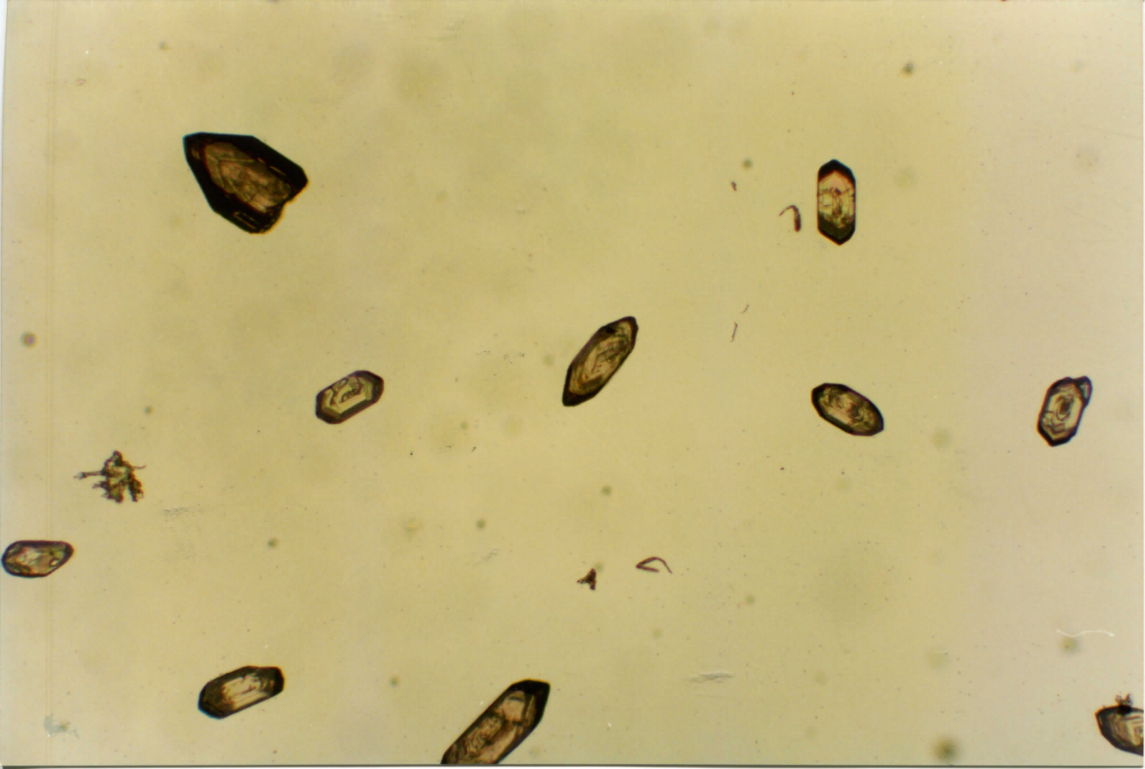
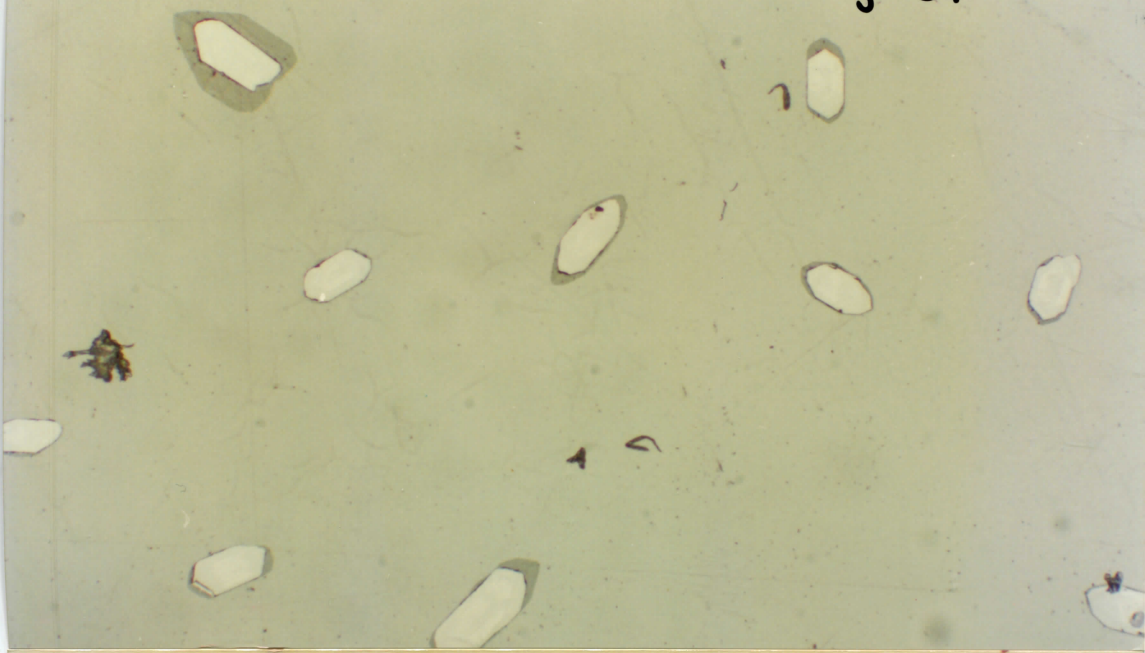
UWA 96-31  
POP B: NL438  
GP 32.



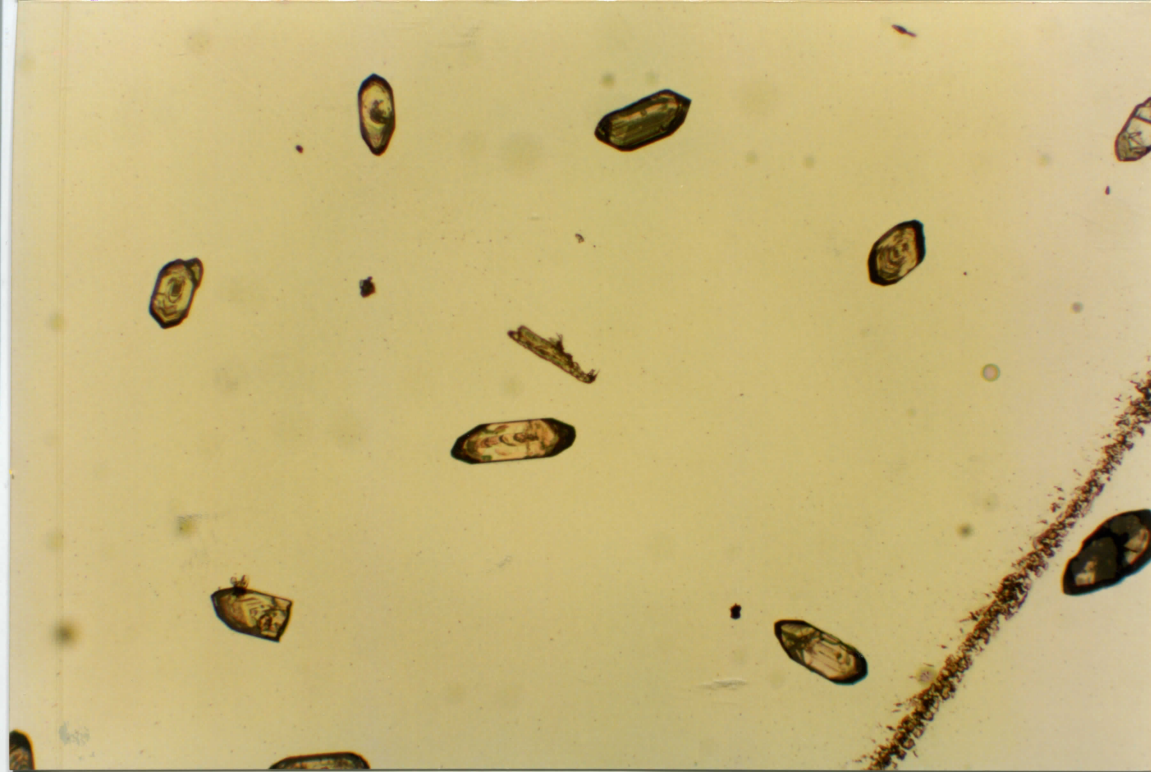
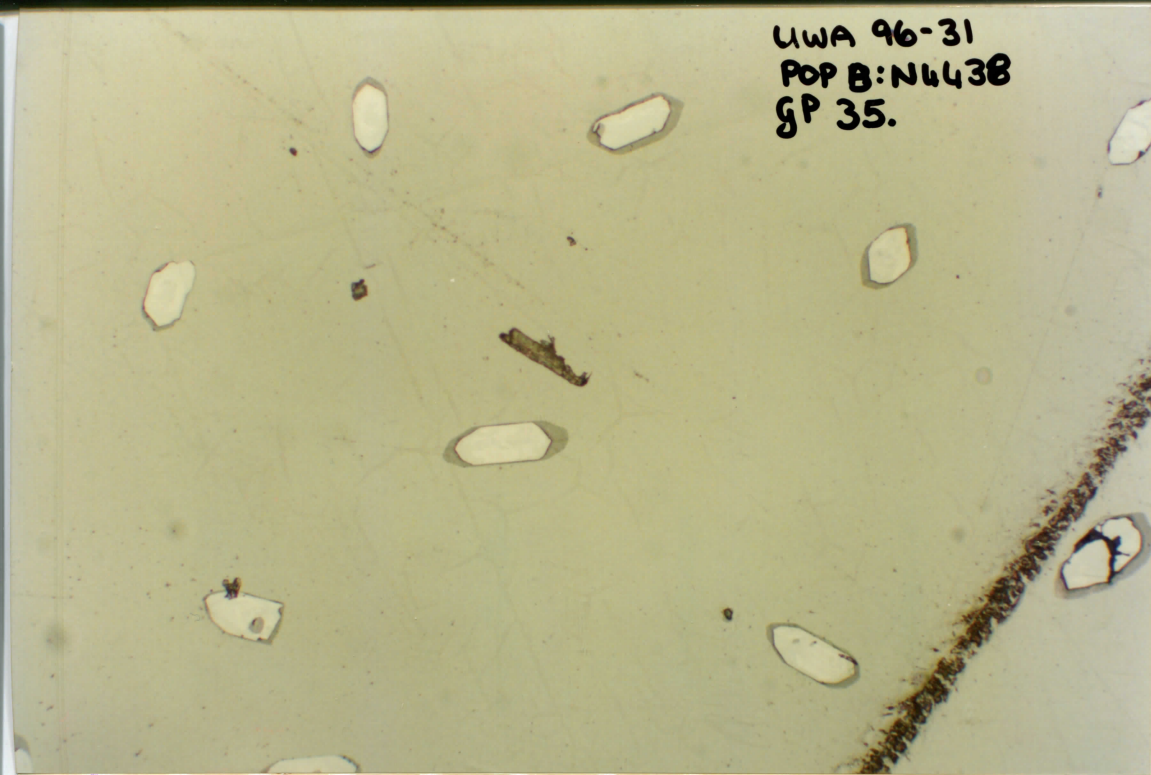
UWA 96-31  
POP B: N4438  
GP 33.



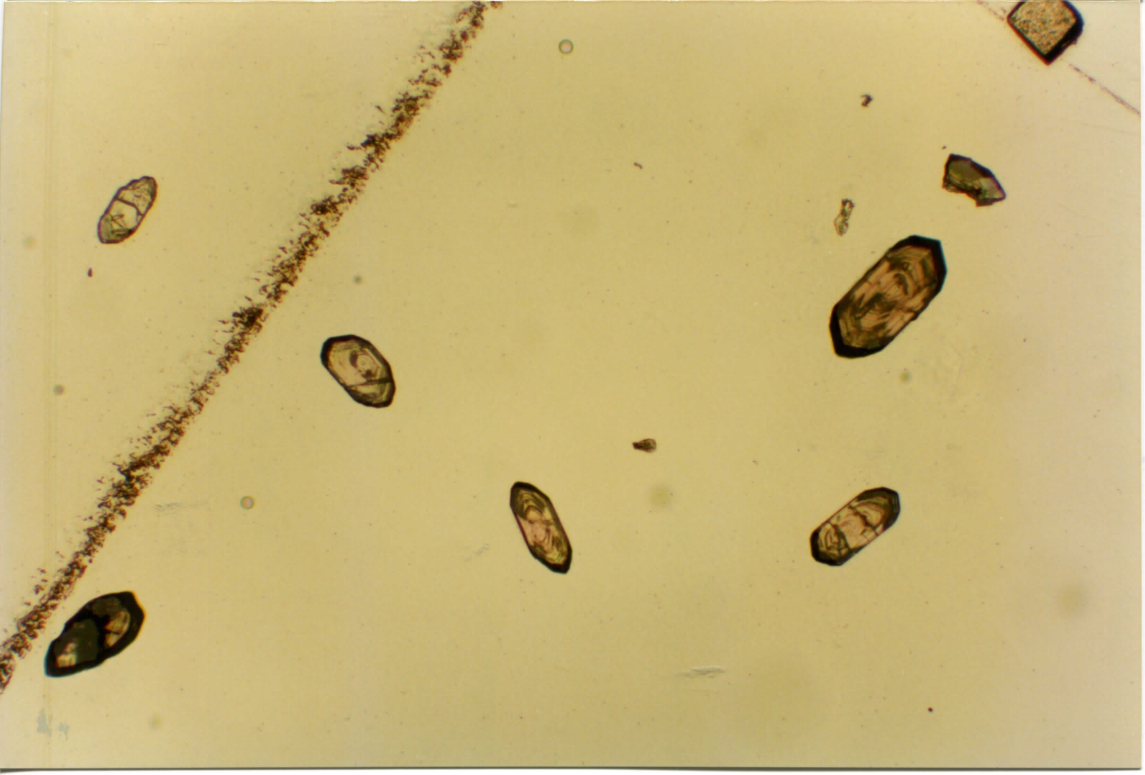
UWA 96-31  
POP 0: N4438  
GP 34.



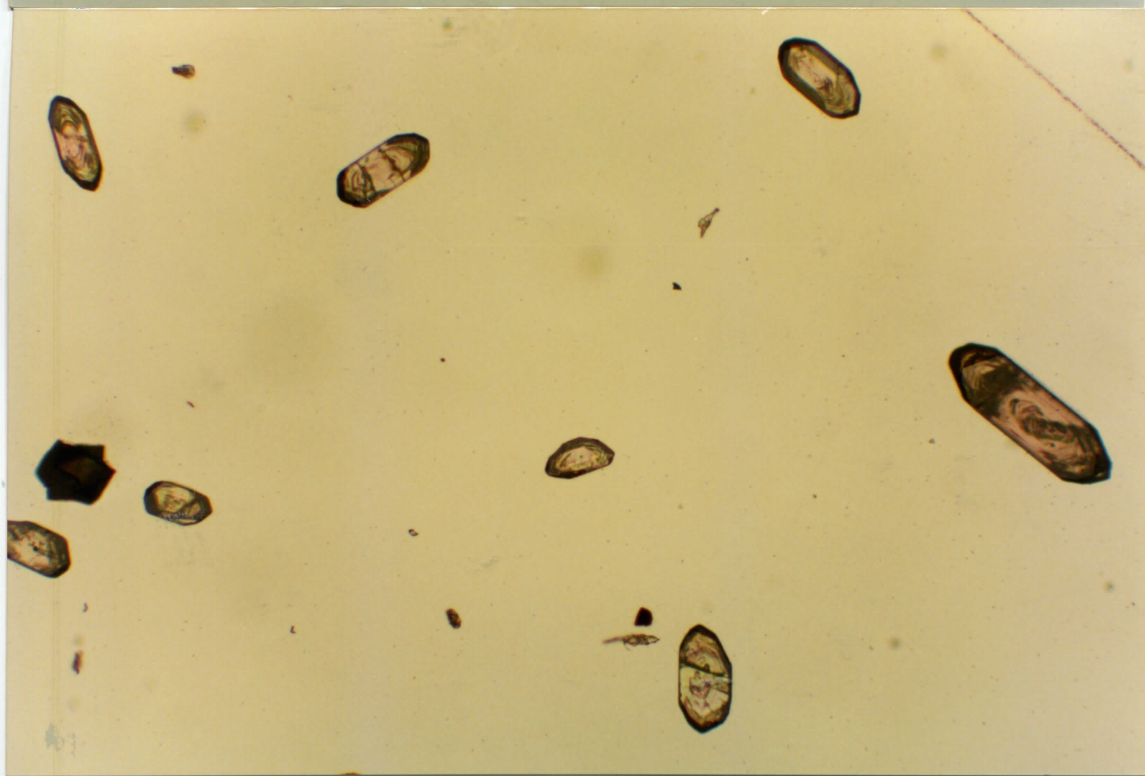
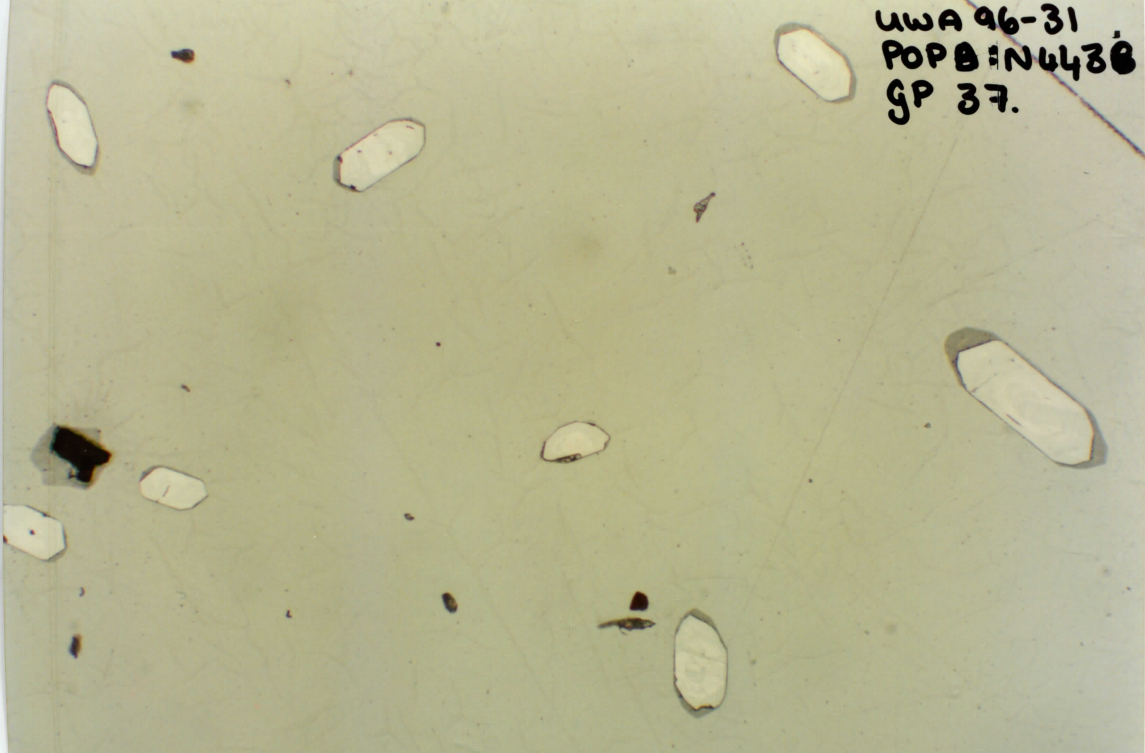
UWA 96-31  
POP B: N4438  
GP 35.



UWA 96-31  
POP8: N6438  
GP 36.

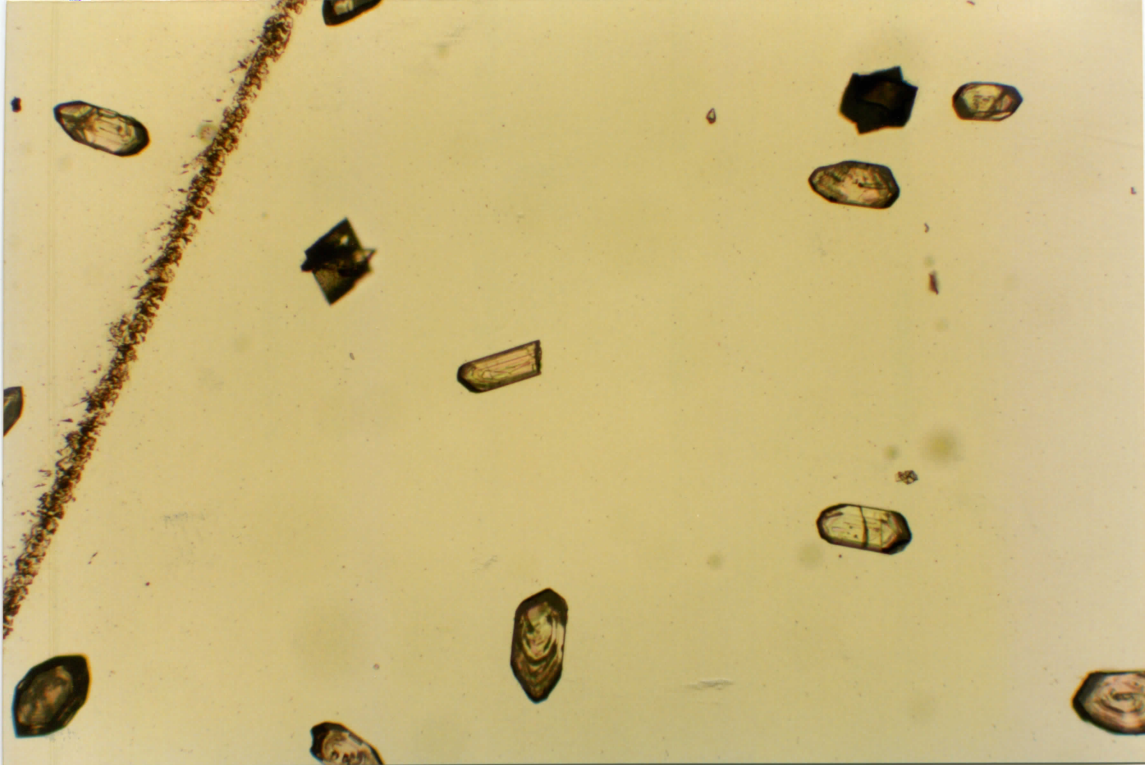
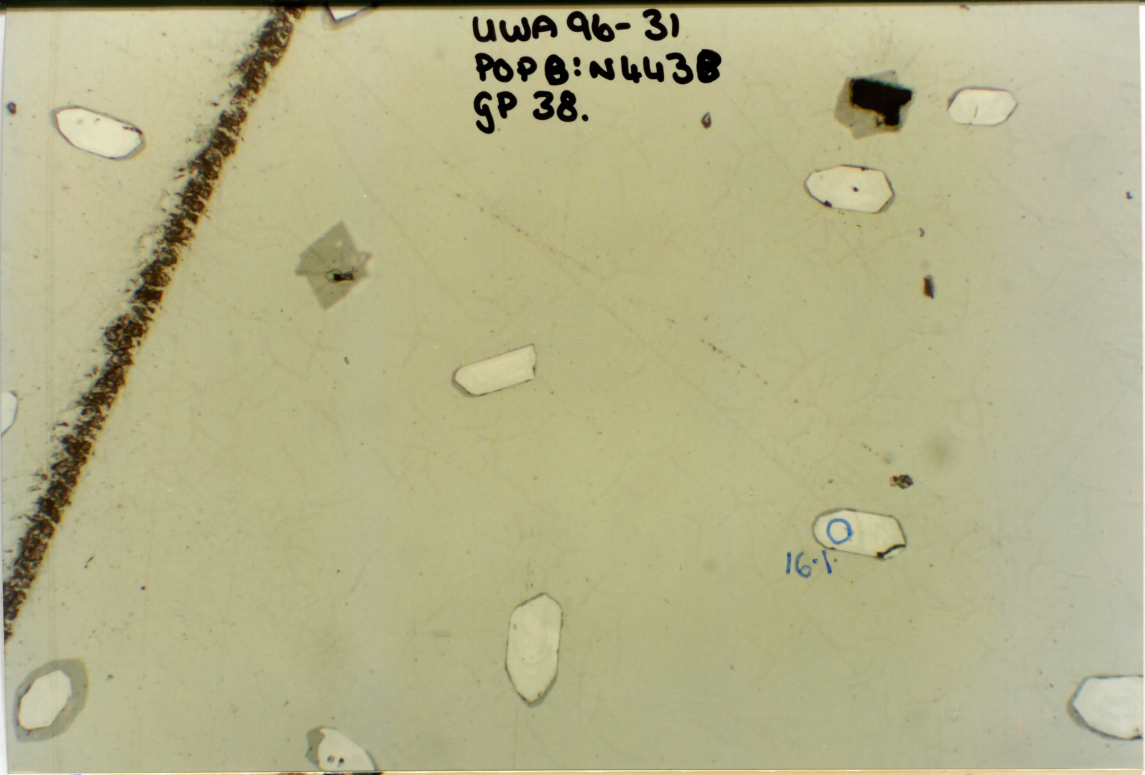


UWA 96-31  
POP B: N4438  
GP 37.

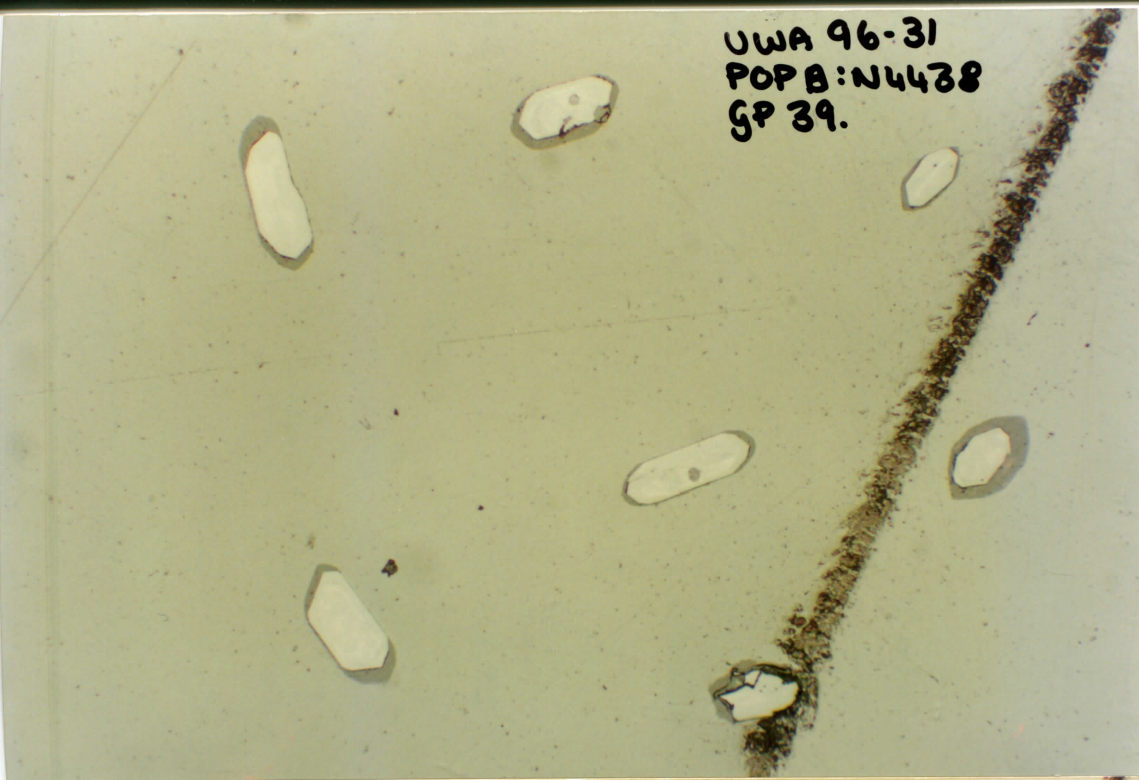


UWA 96-31  
POPB: N443B  
GP 38.

16-V



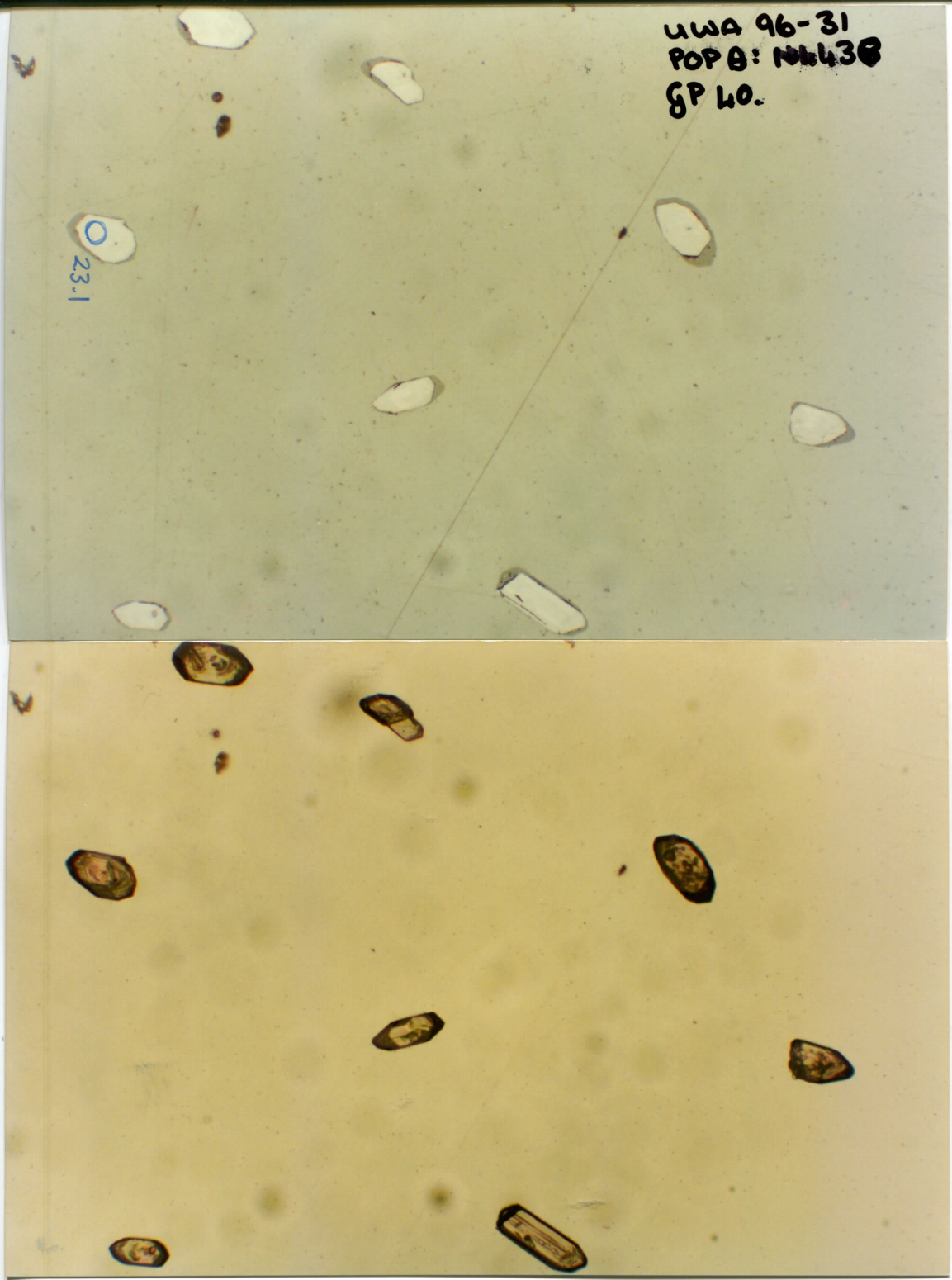
UWA 96-31  
POP B: N4438  
GP 39.





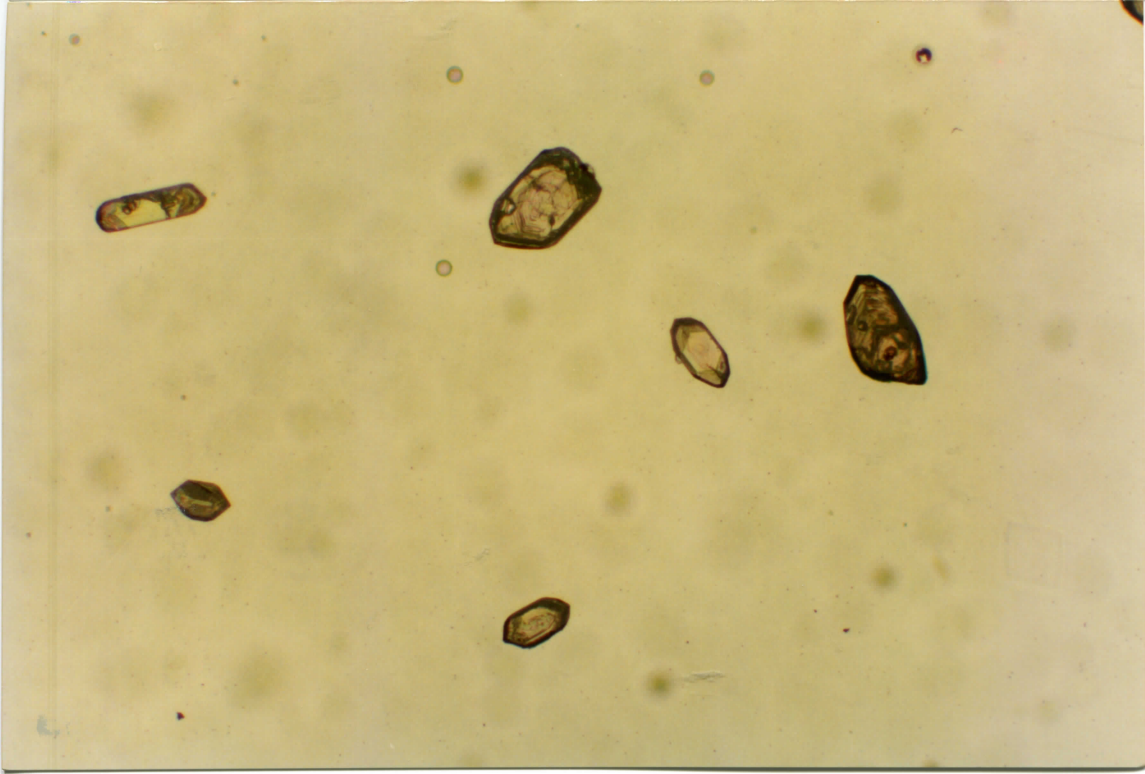
UWA 96-31  
POP B: N438  
GP 40.

23.1



UWA 96-31  
POP B: N4438  
GP 41.

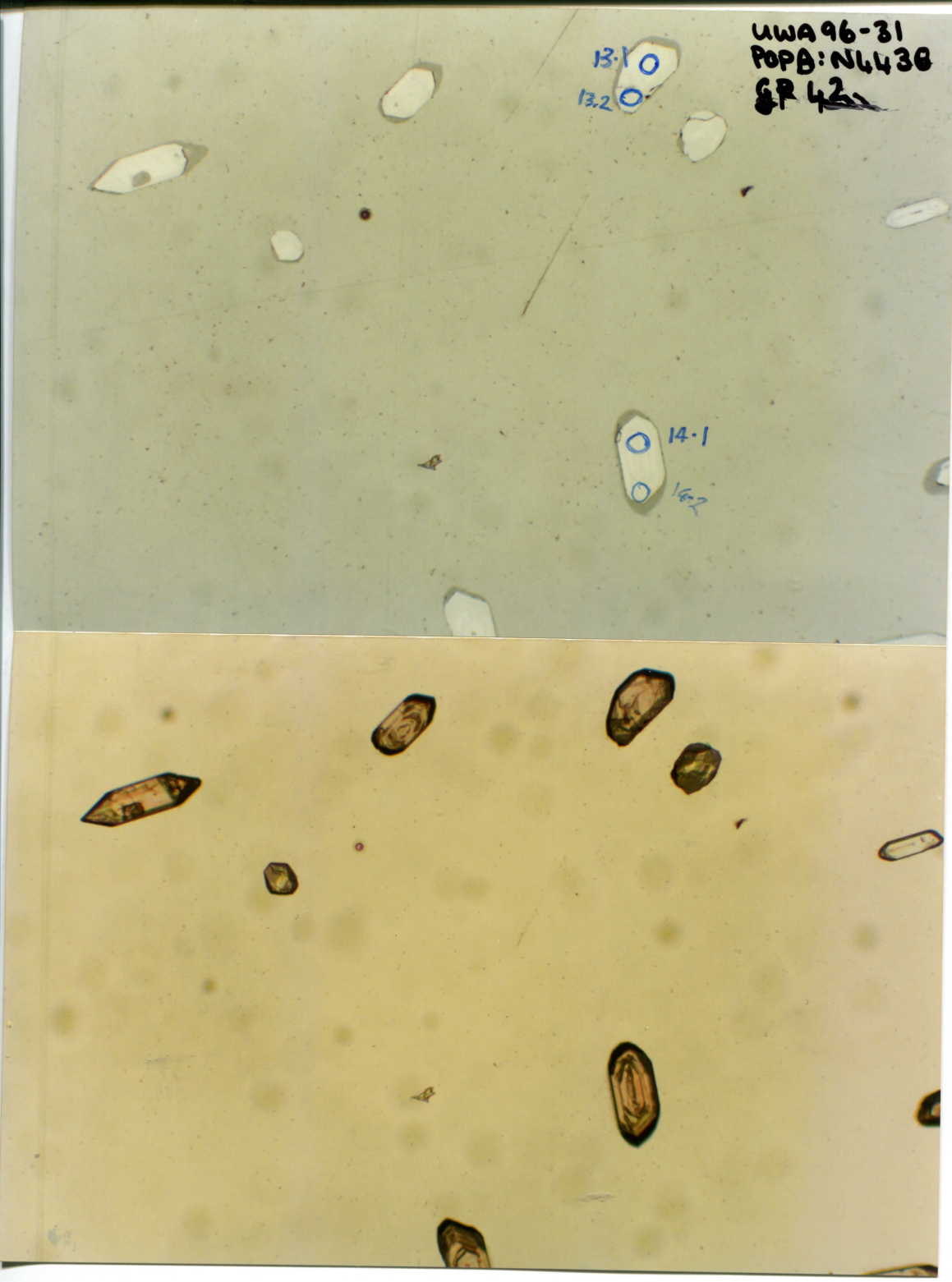
12-10  
O



UWA 96-31  
POPB: NL438  
GR 42

13.1 O  
13.2 O

14.1  
14.2



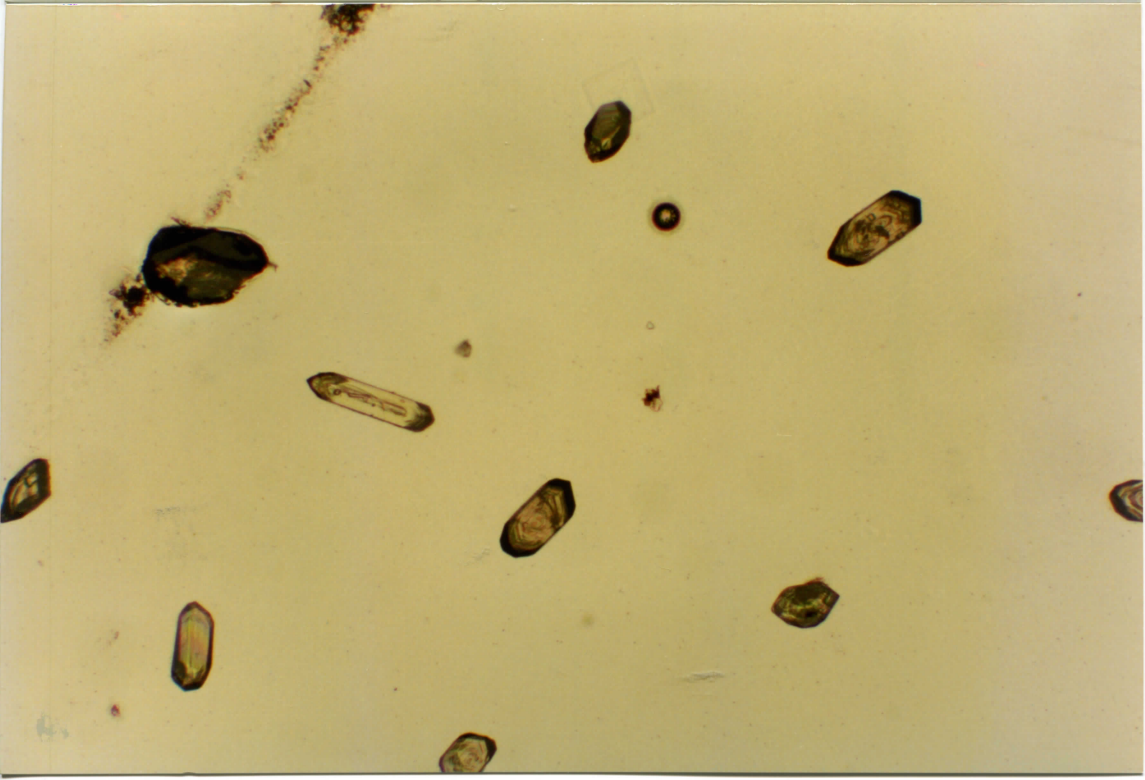
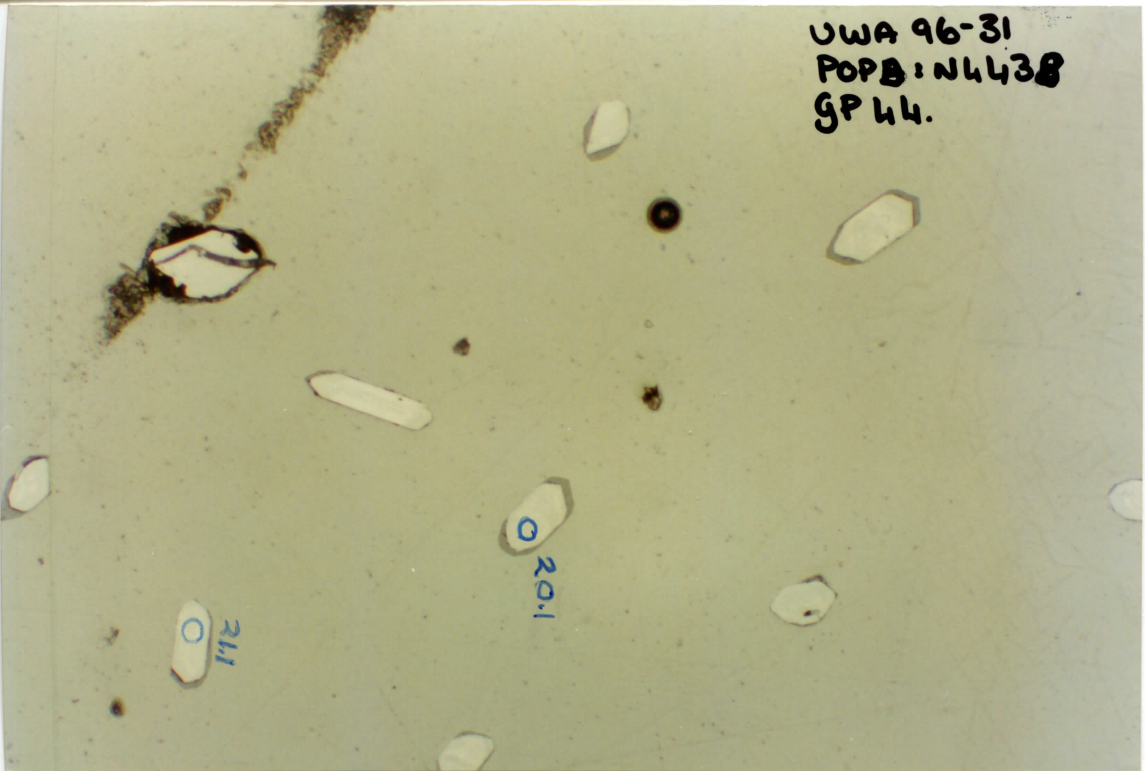
UWA 96-31  
POP B: N443B  
GP 43

19-2 00  
19-1

18-1  
~~18-1~~ 00 18-2



UWA 96-31  
POPB: N4438  
GP 44.

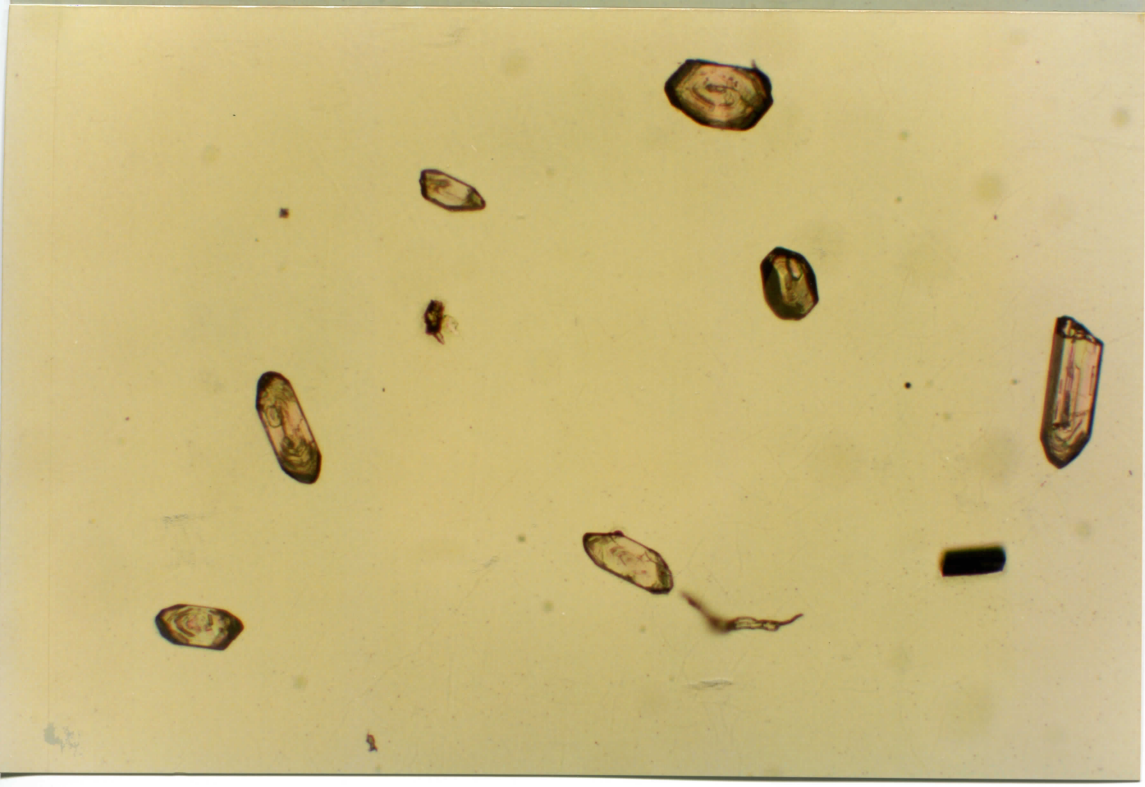
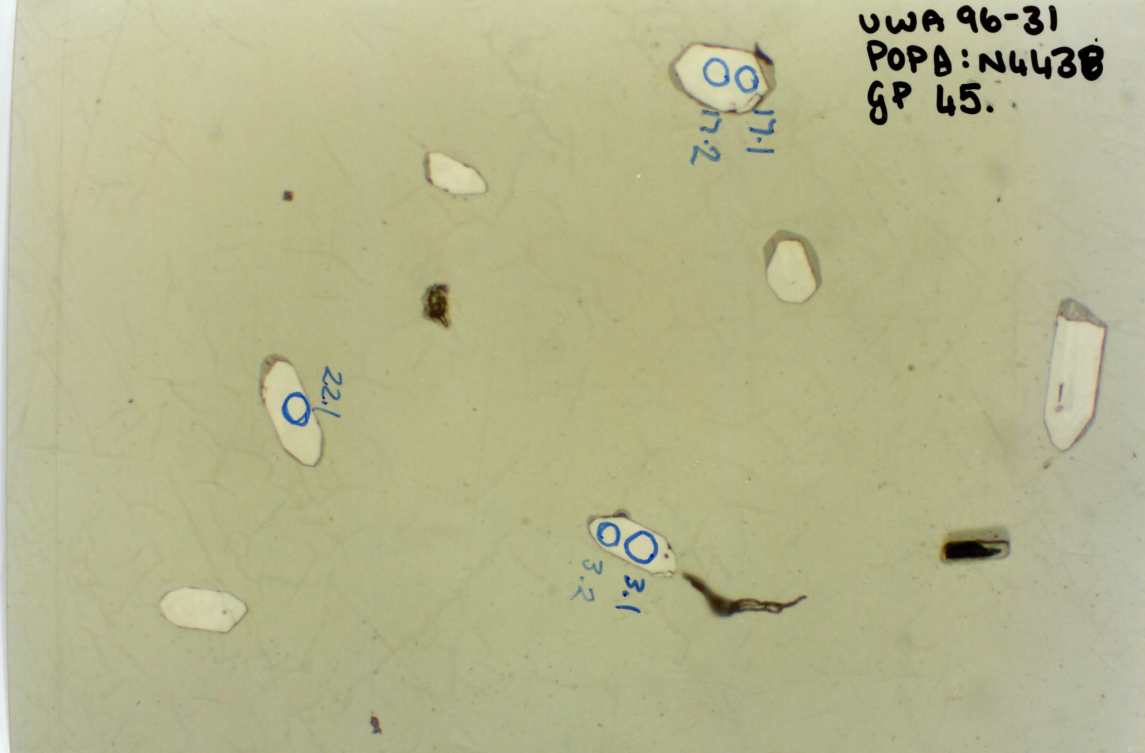


UWA 96-31  
POPB: N4438  
GP 45.

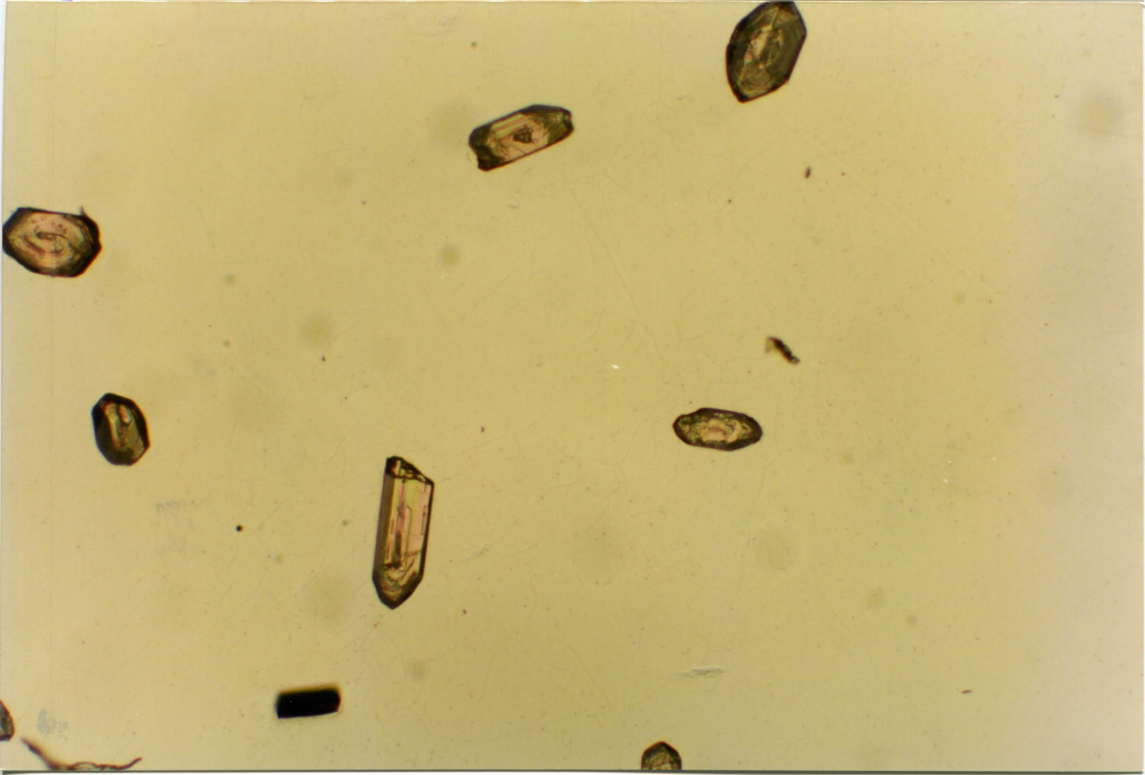
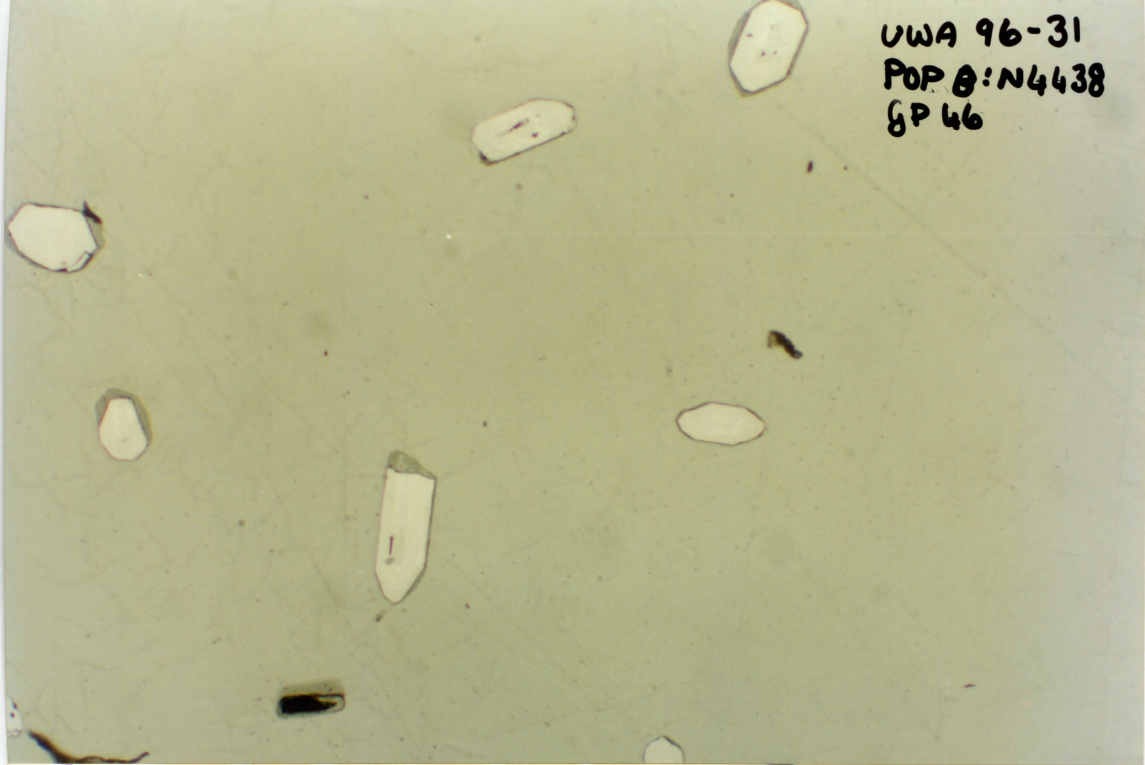
00  
17.1  
17.2

22.1  
0

00  
3.1  
3.2

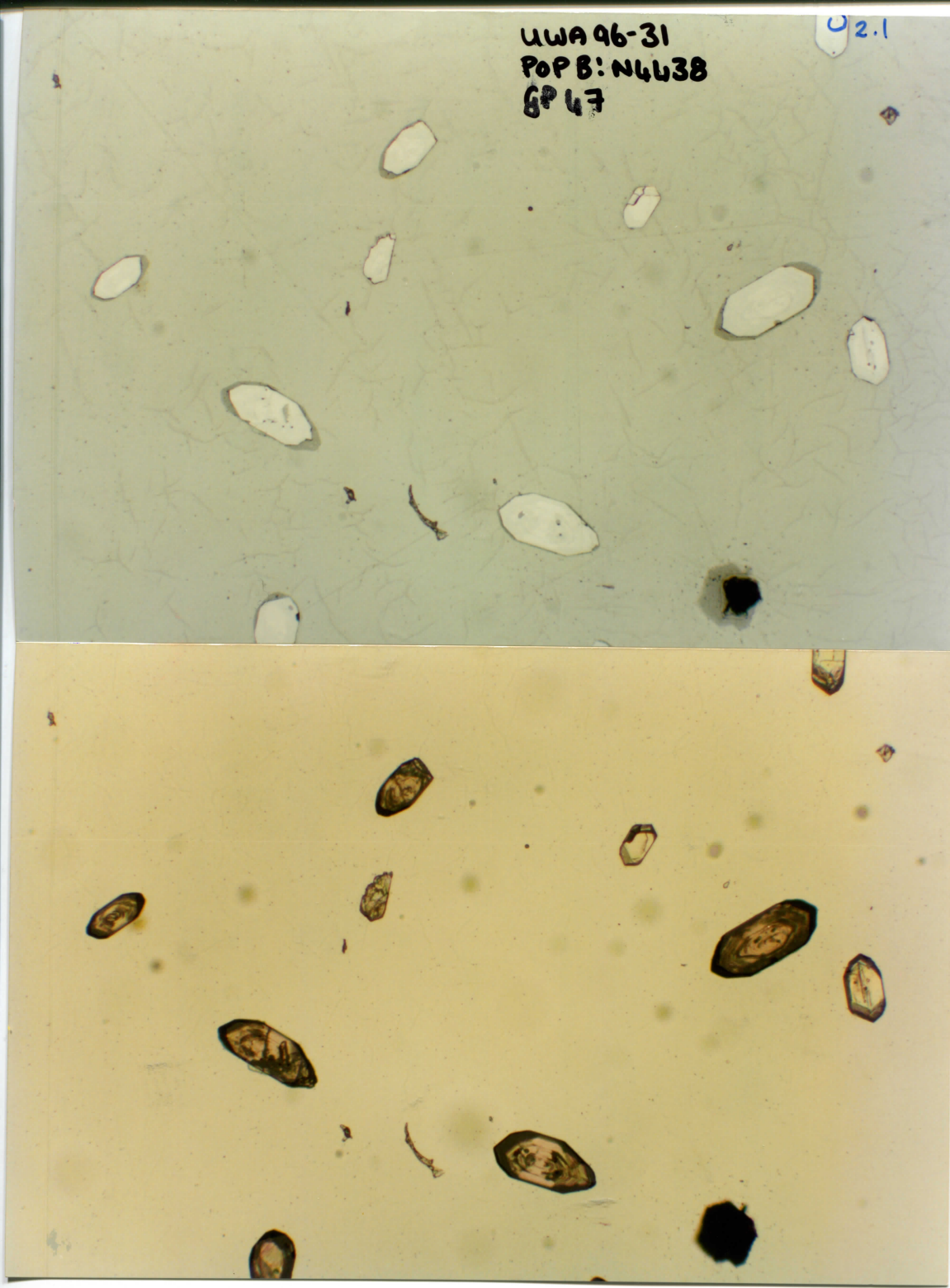


UWA 96-31  
POP 8: N4438  
GP 46



UWA 96-31  
POP B: N4638  
GP 47

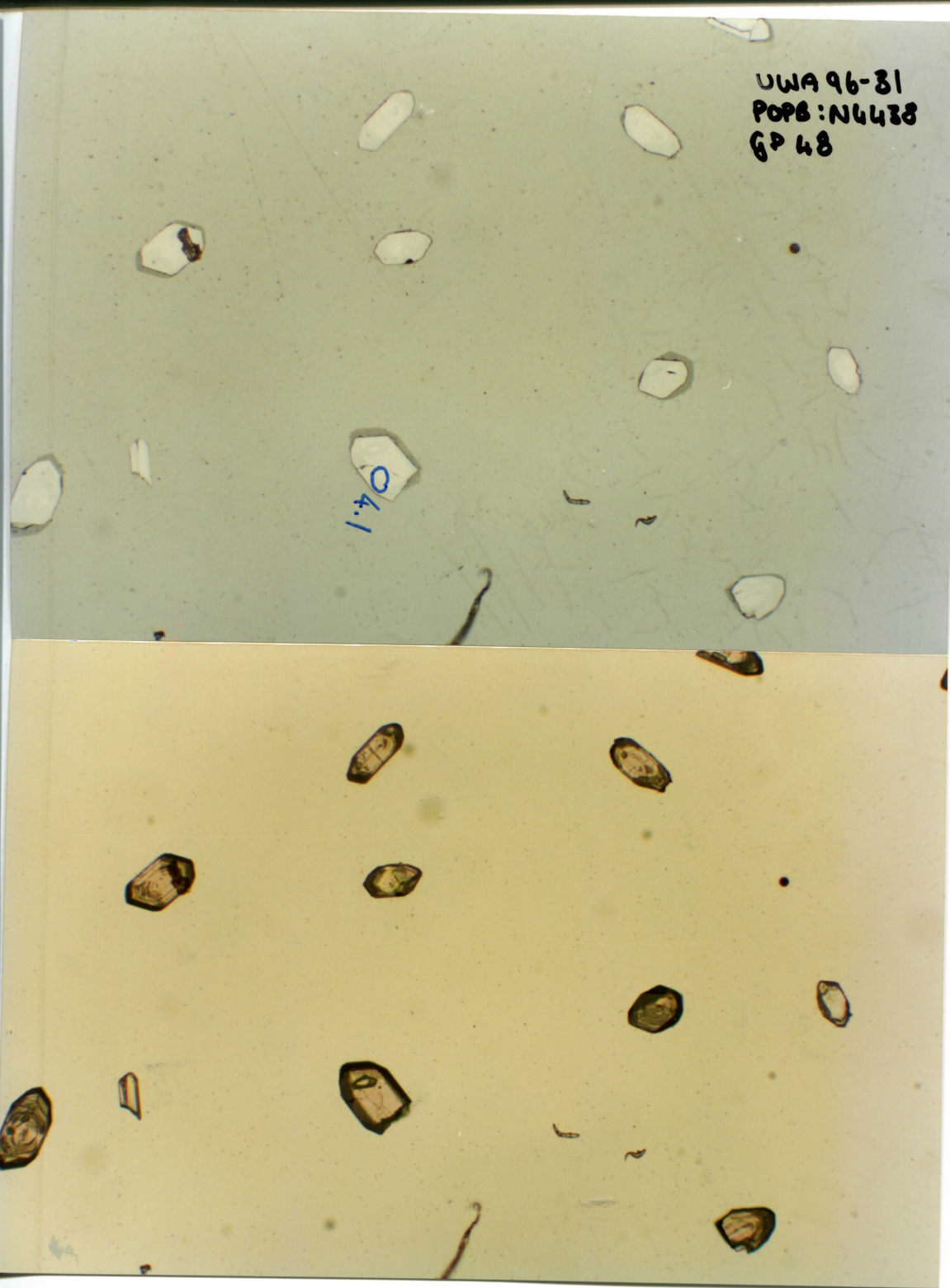
2.1



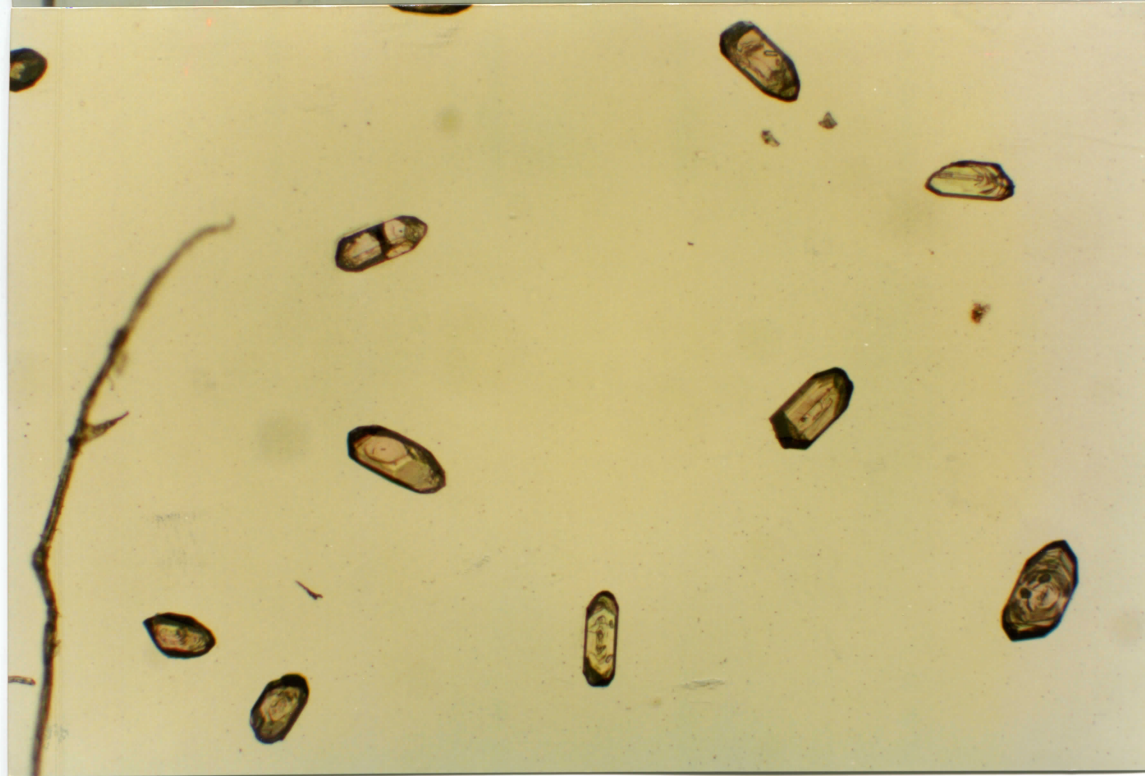
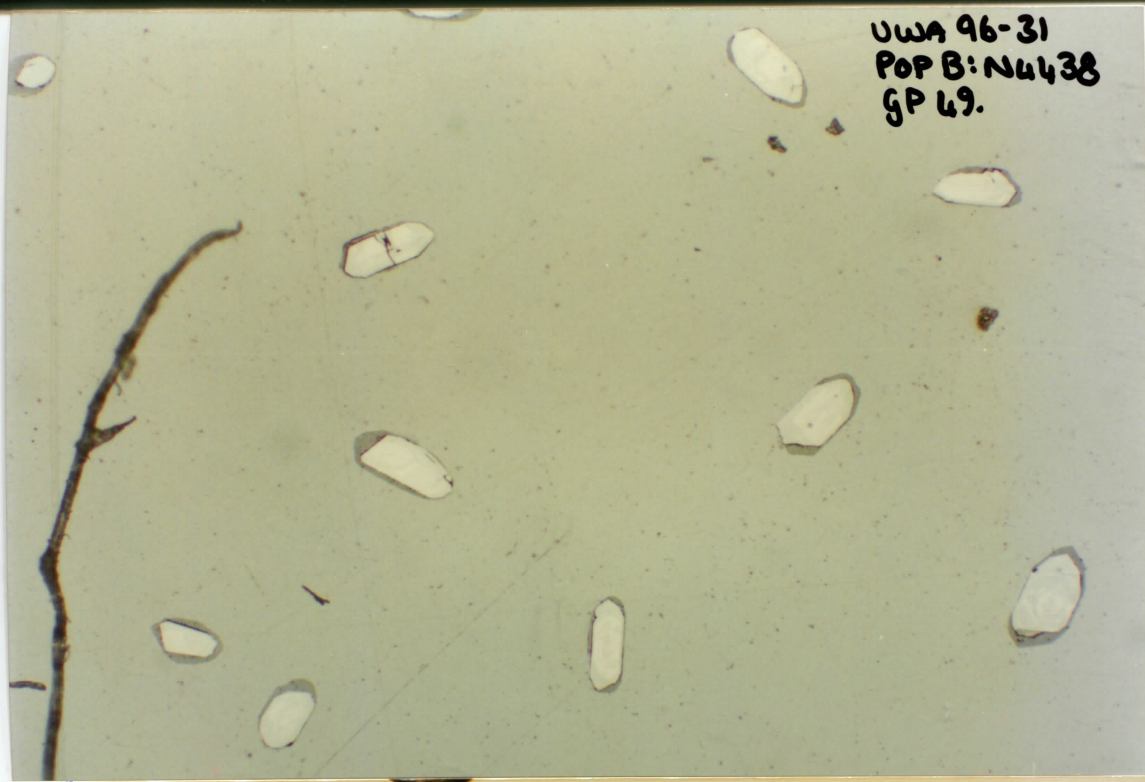


UWA 96-81  
POPB: N4438  
GP 48

04.1

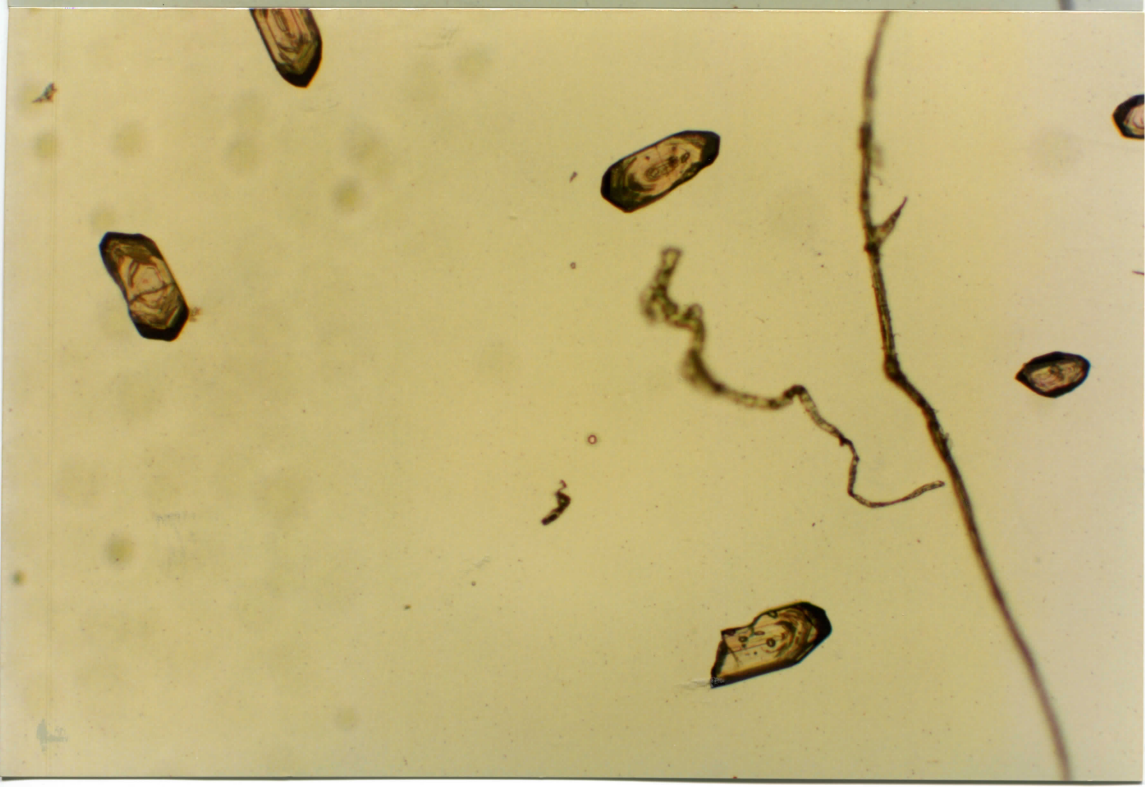
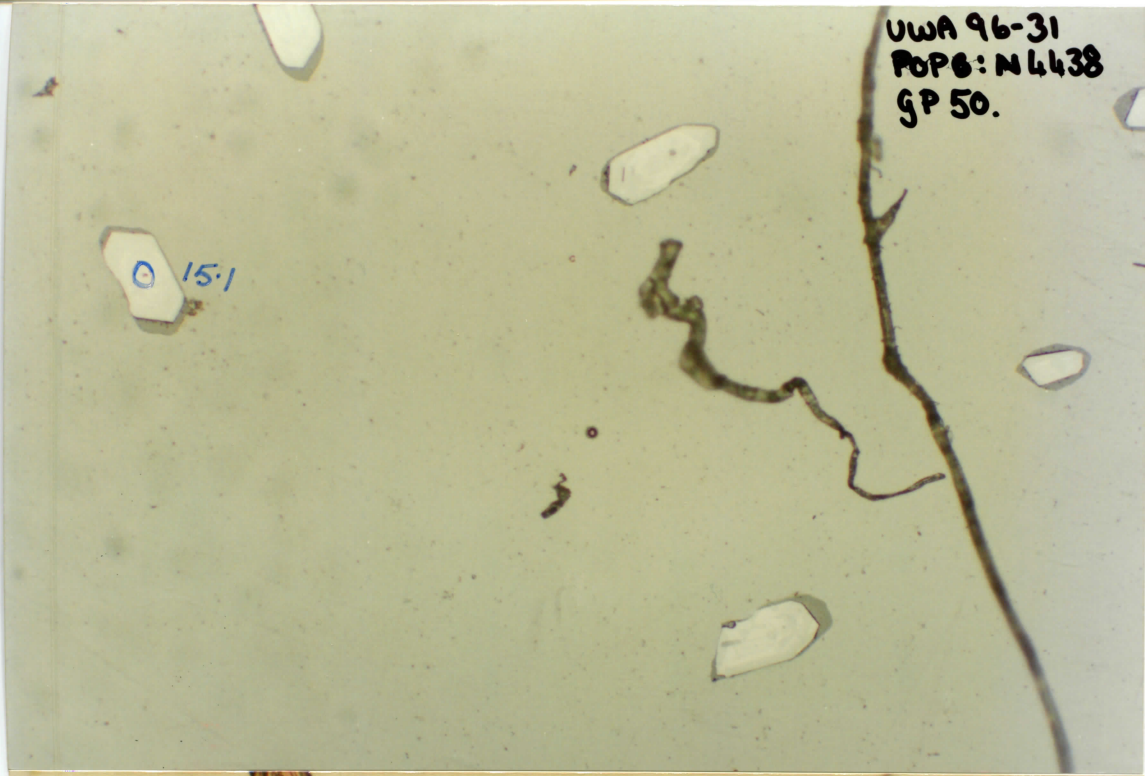


UWA 96-31  
POP B: N4438  
GP 49.

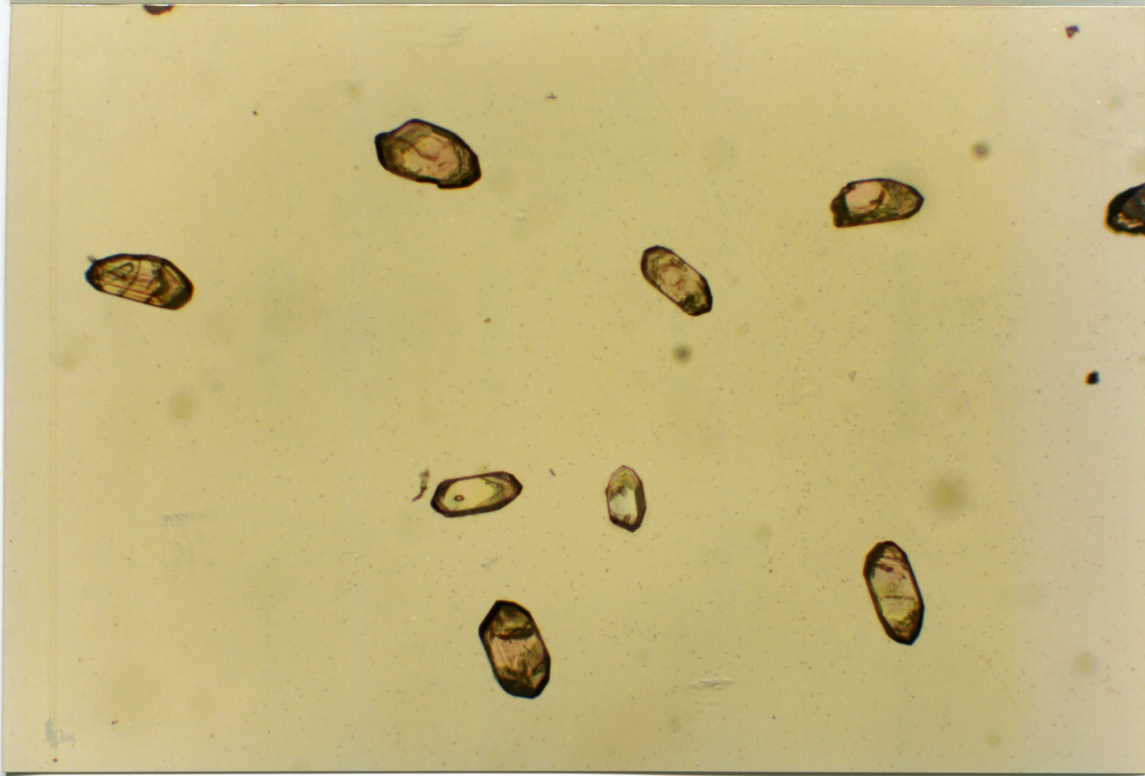
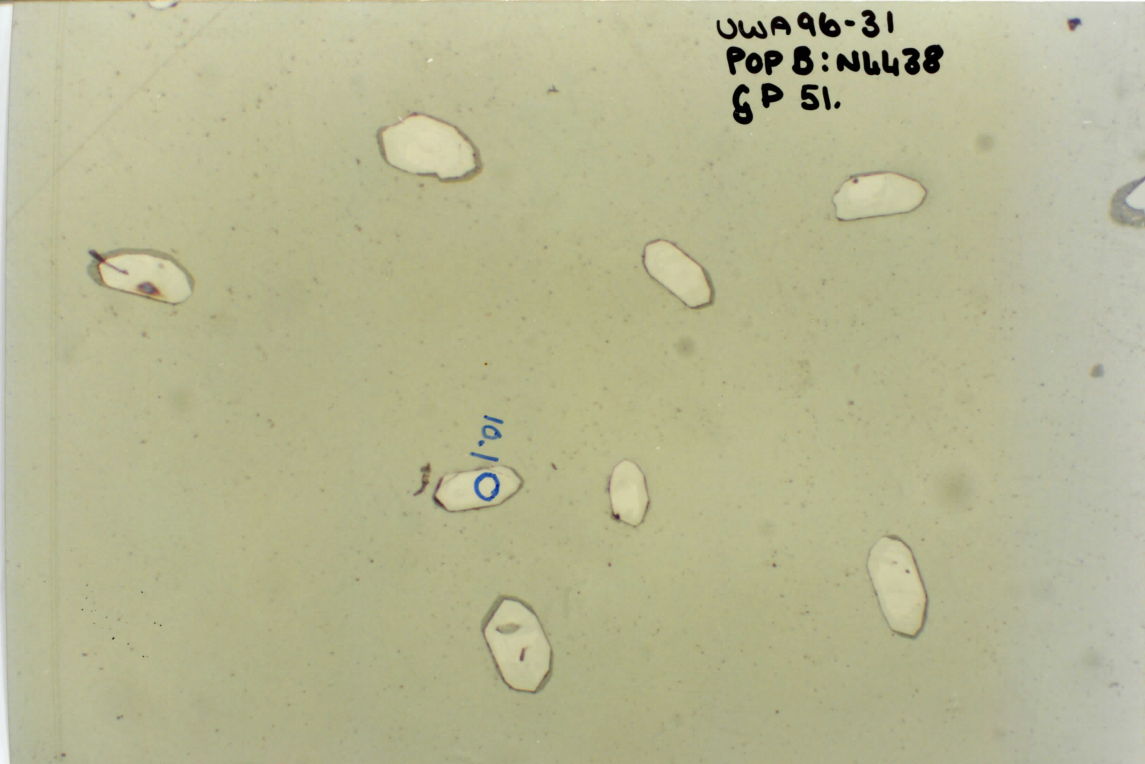


UWA 96-31  
POPS: N4438  
GP 50.

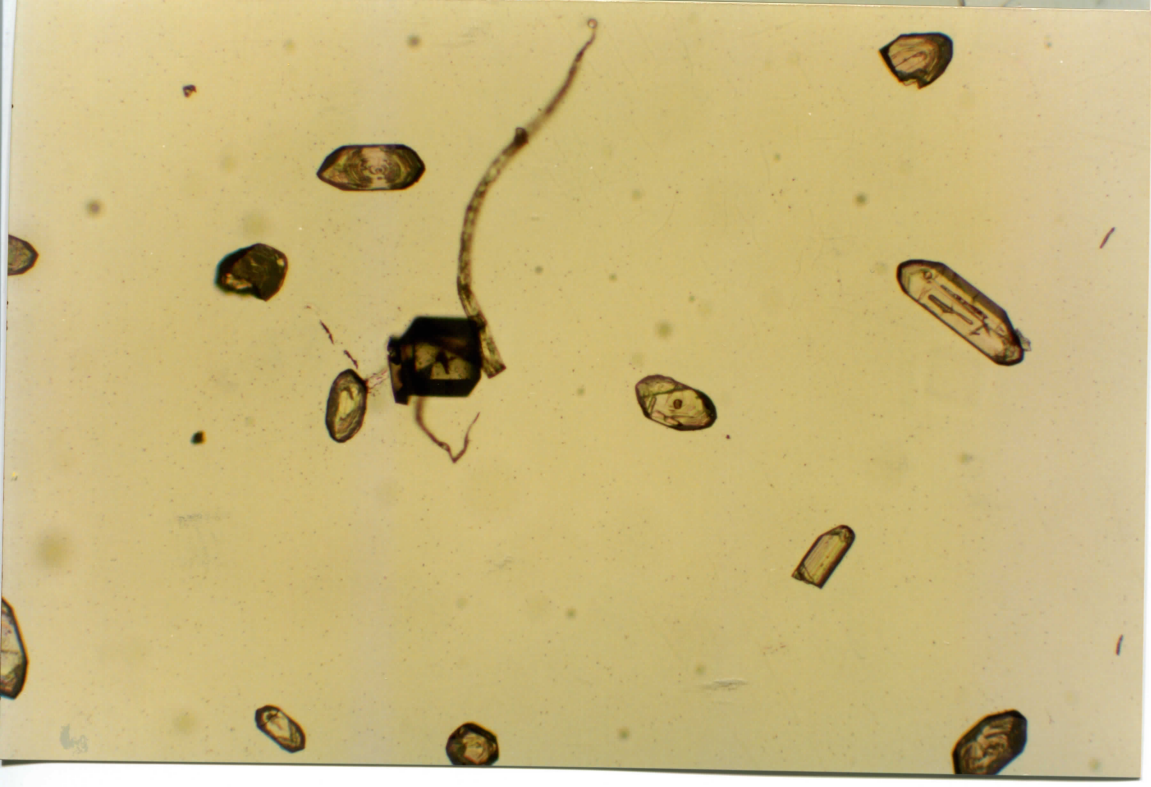
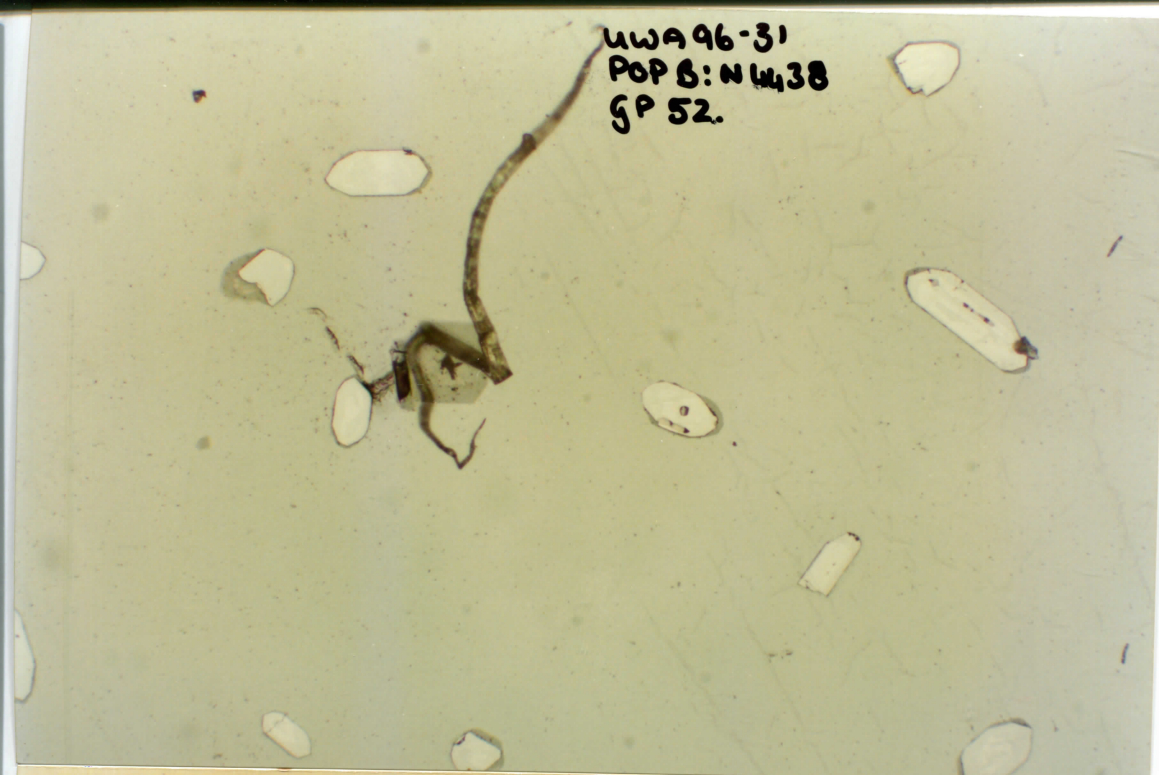
0 15.1



UWA96-31  
POP B: N6438  
GP 51.

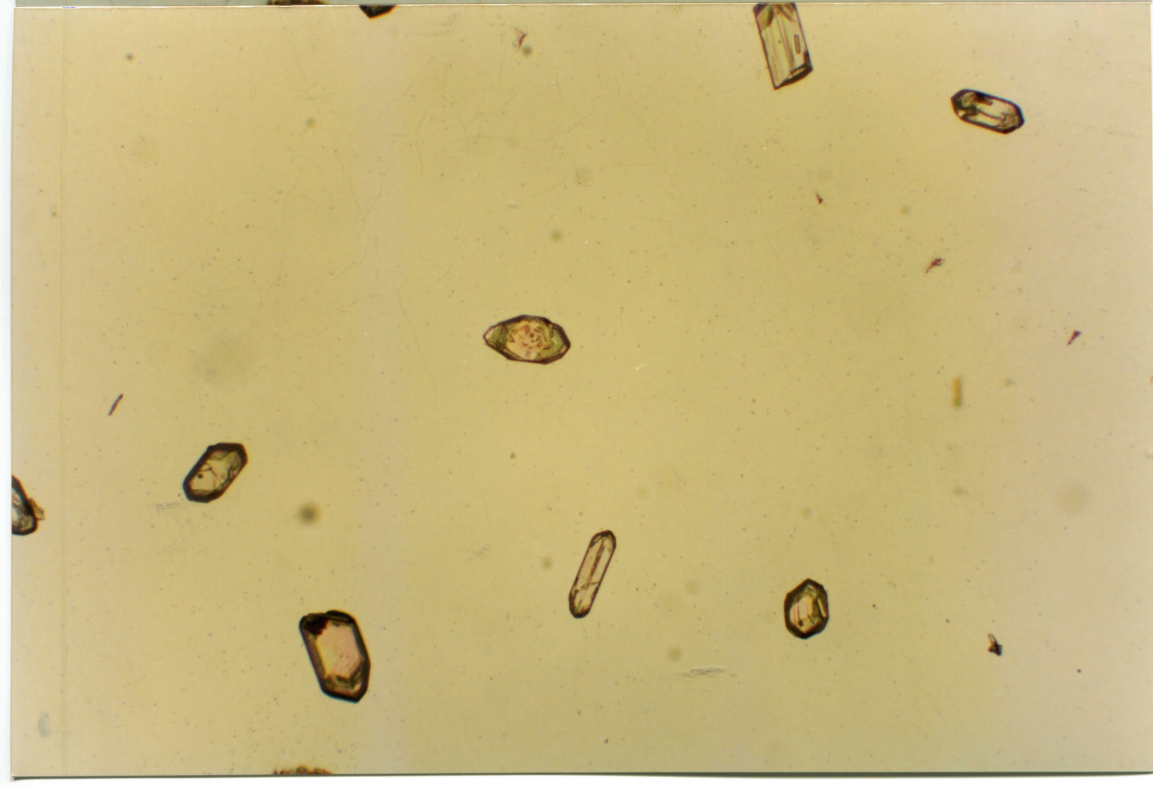
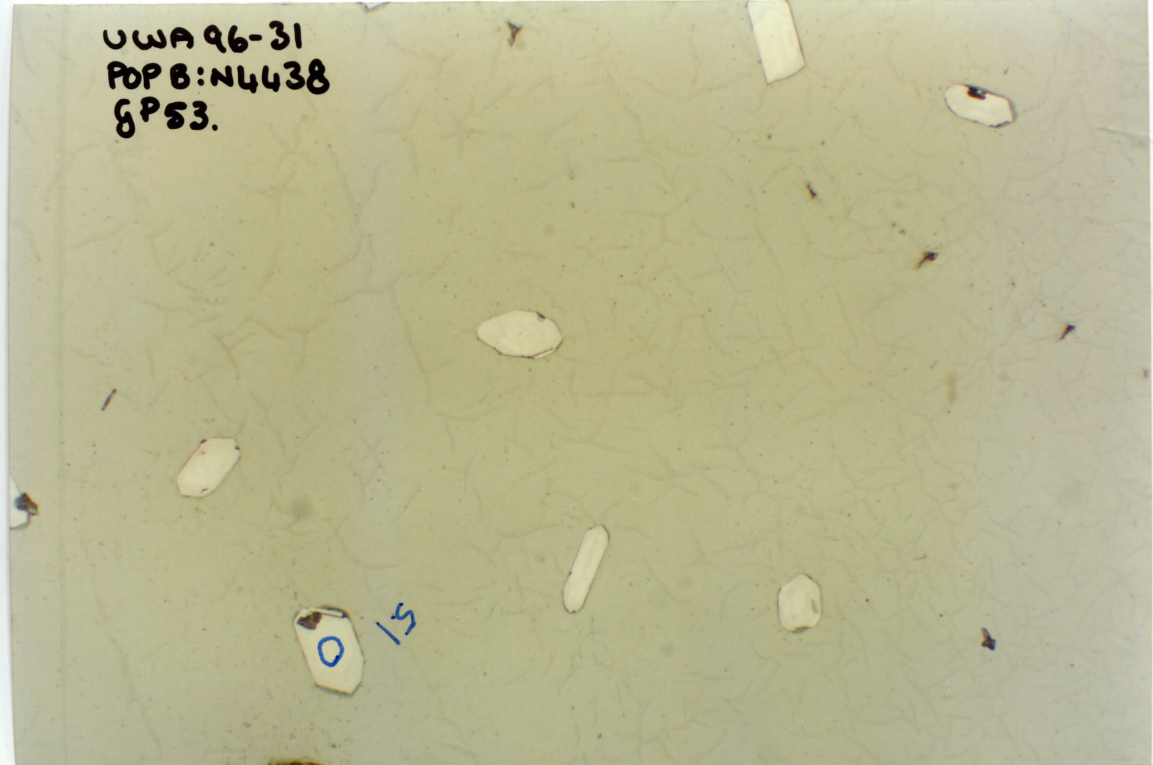


UWA 96-31  
POP 8: NW 38  
GP 52.



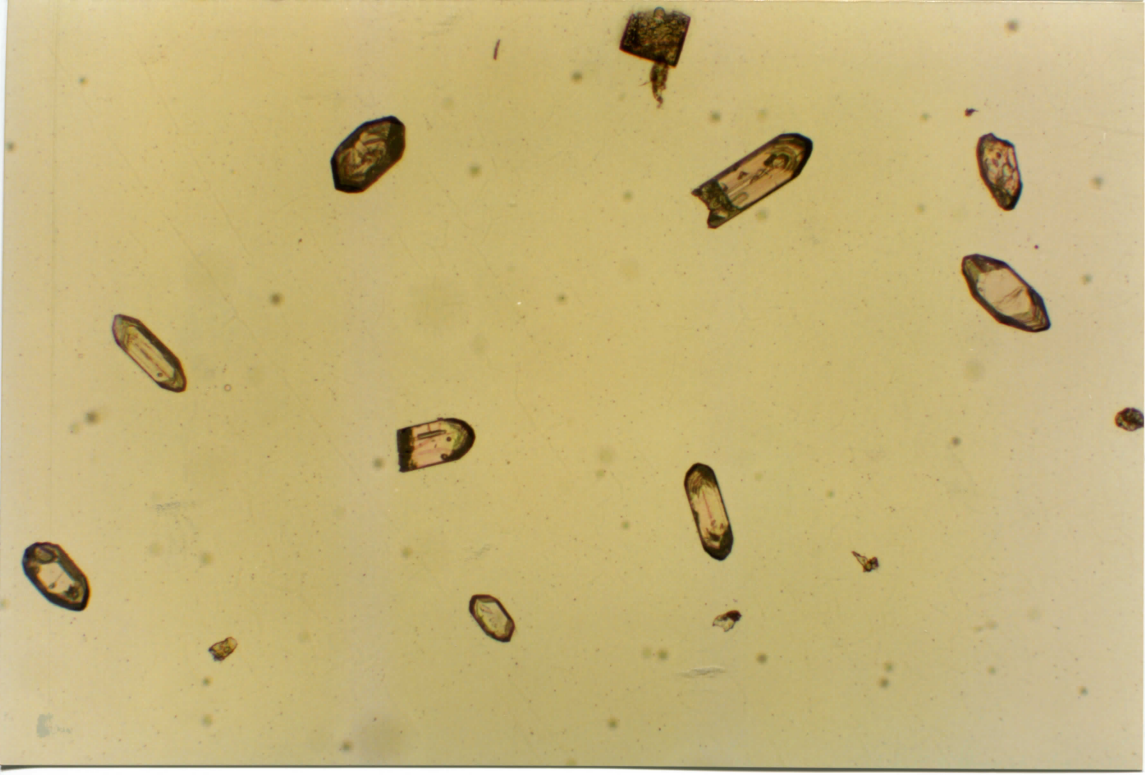
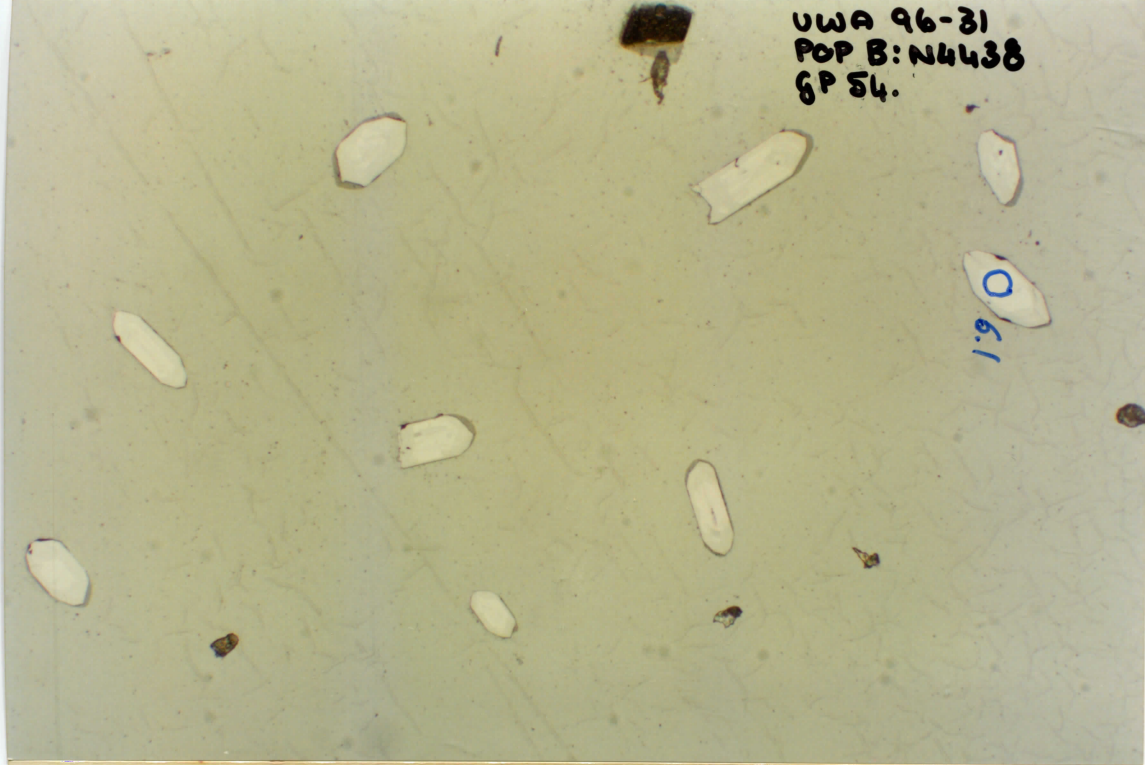
UWA 96-31  
POP B: N4438  
GPS3.

0/5



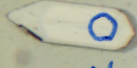
UWA 96-31  
POP B: N4438  
GP 54.

0  
6.1



UWA 96-31  
POP 8:N4438  
SP 55.

0.7.1





UWA 96-31  
POP0: N4438  
GP 56.

120

8.1  
0

