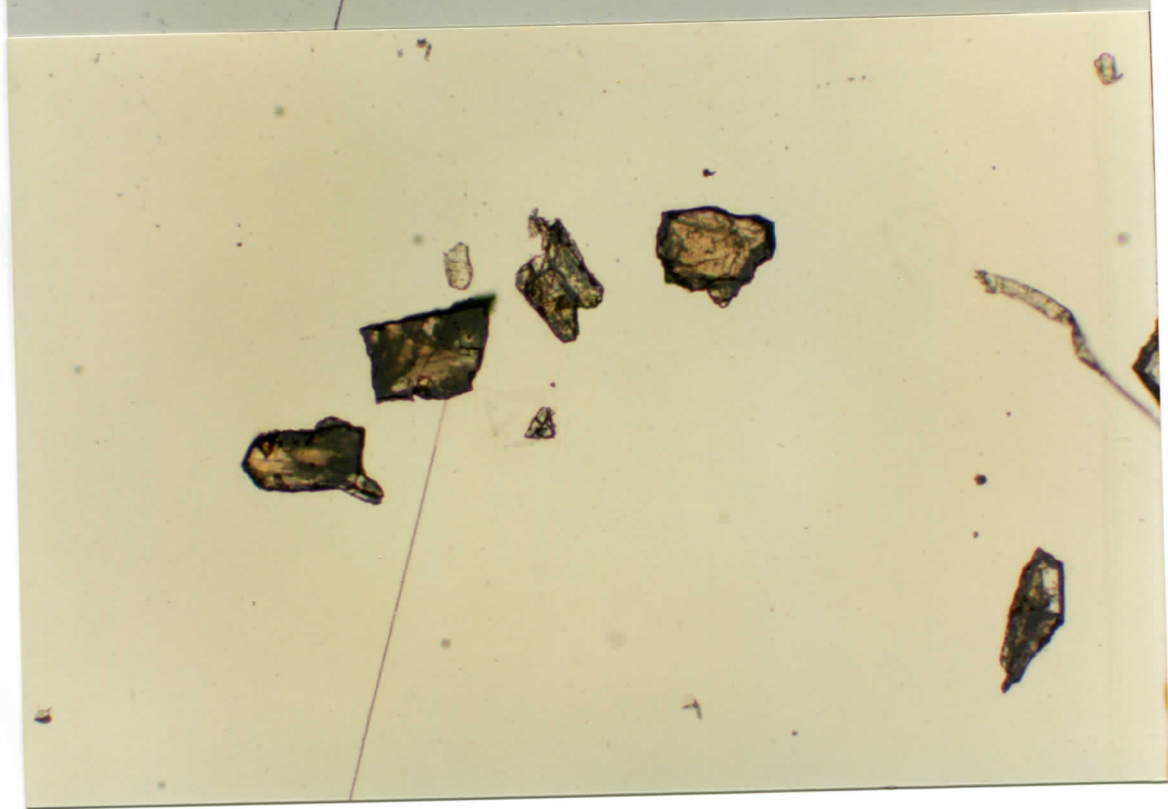
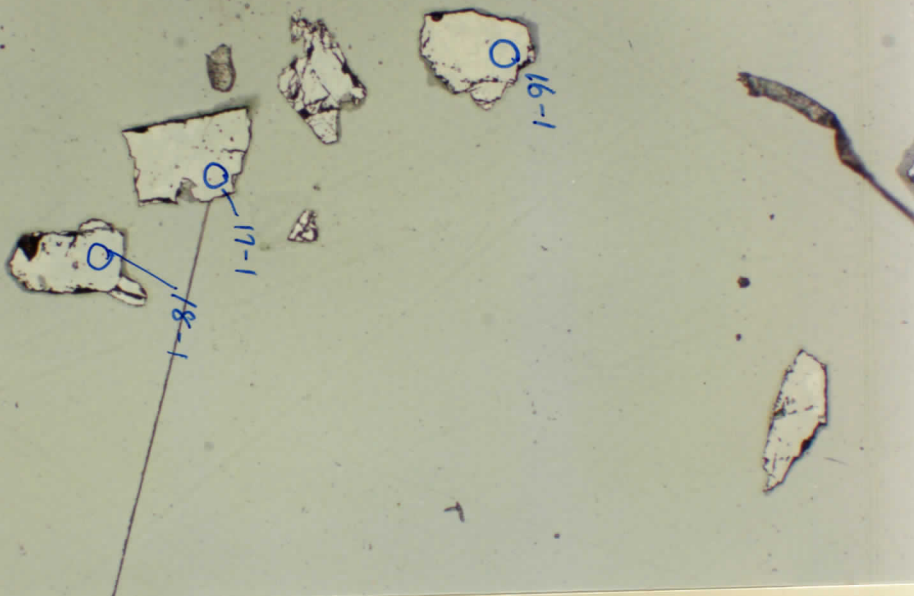
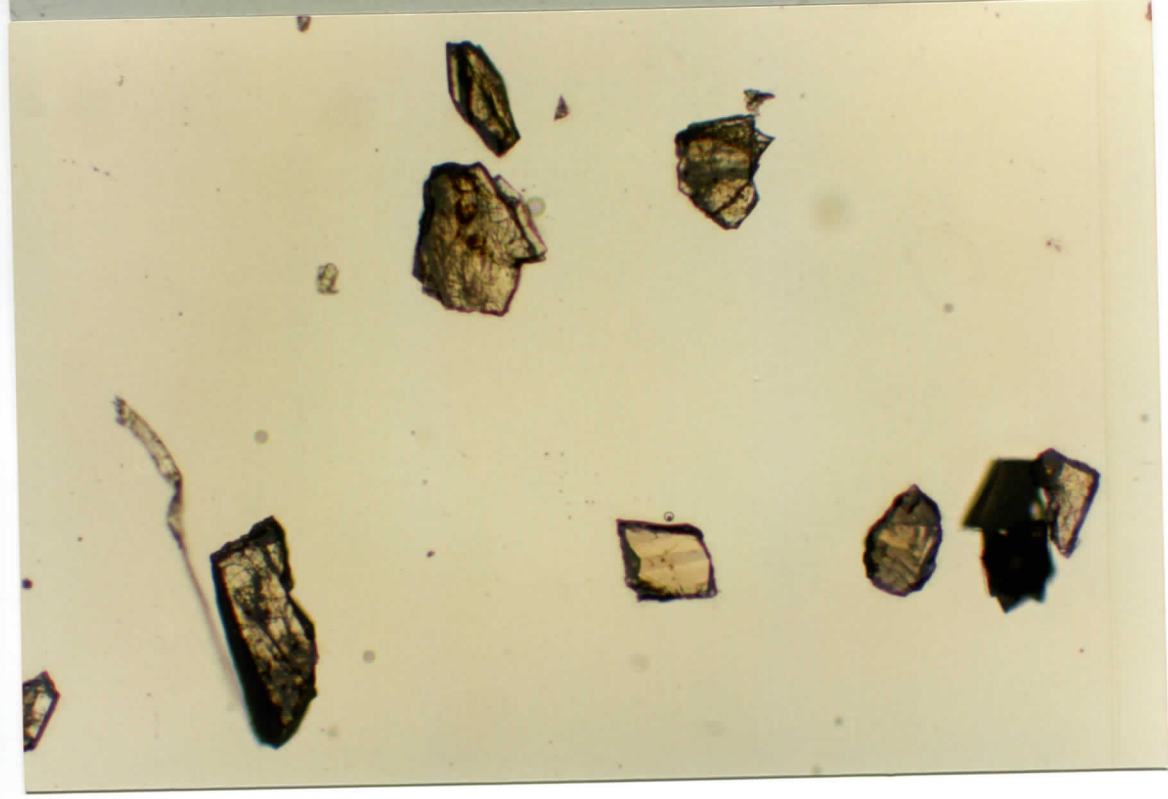
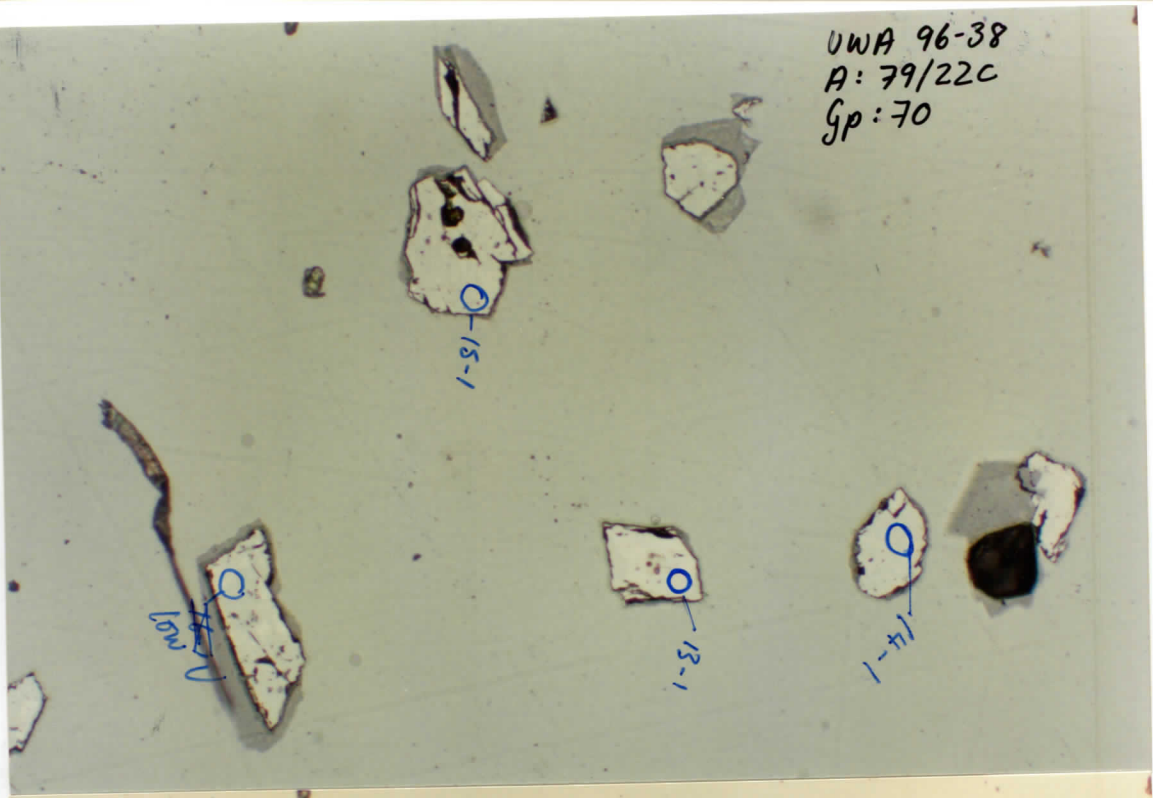


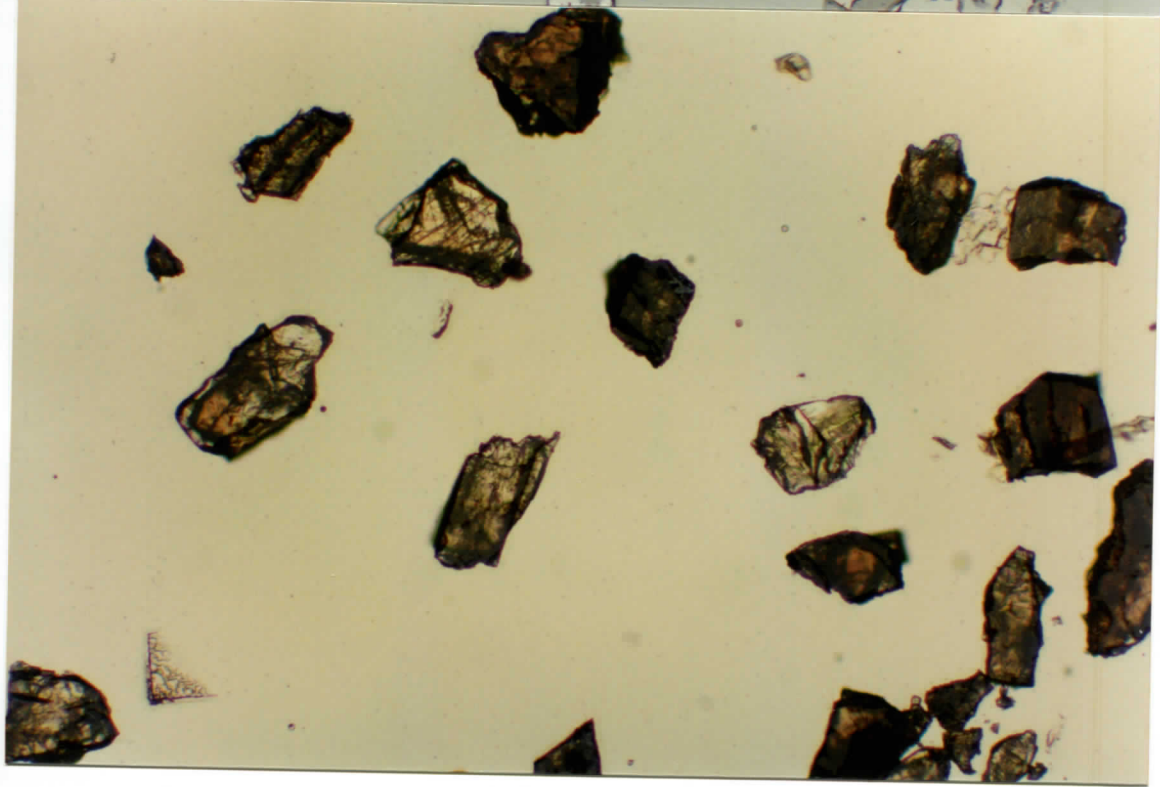
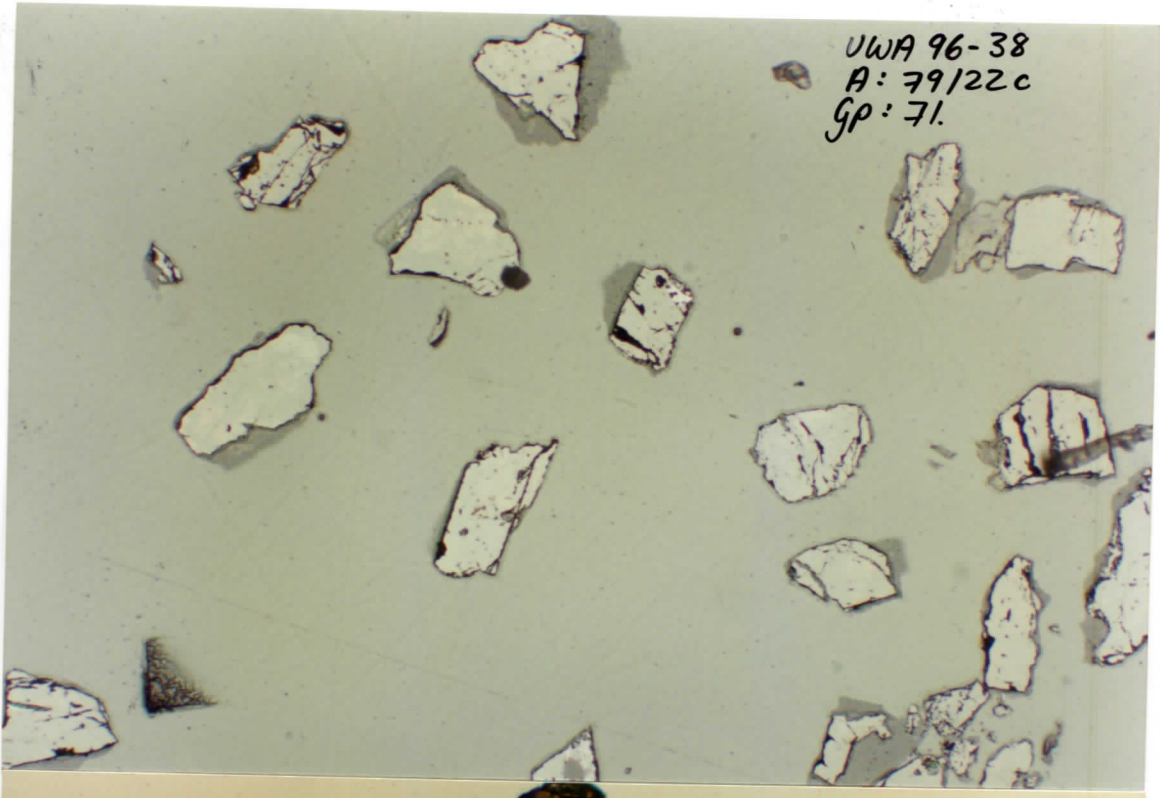
UWA9638
A: 79122c
GP: 69.



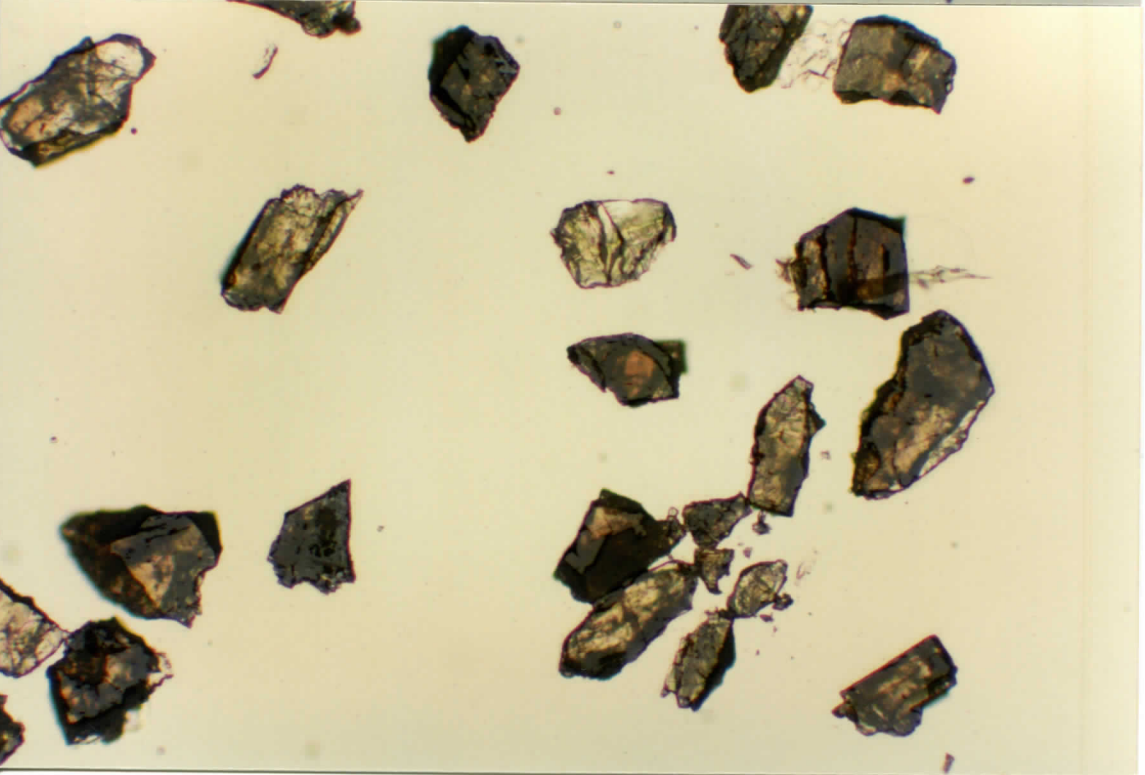
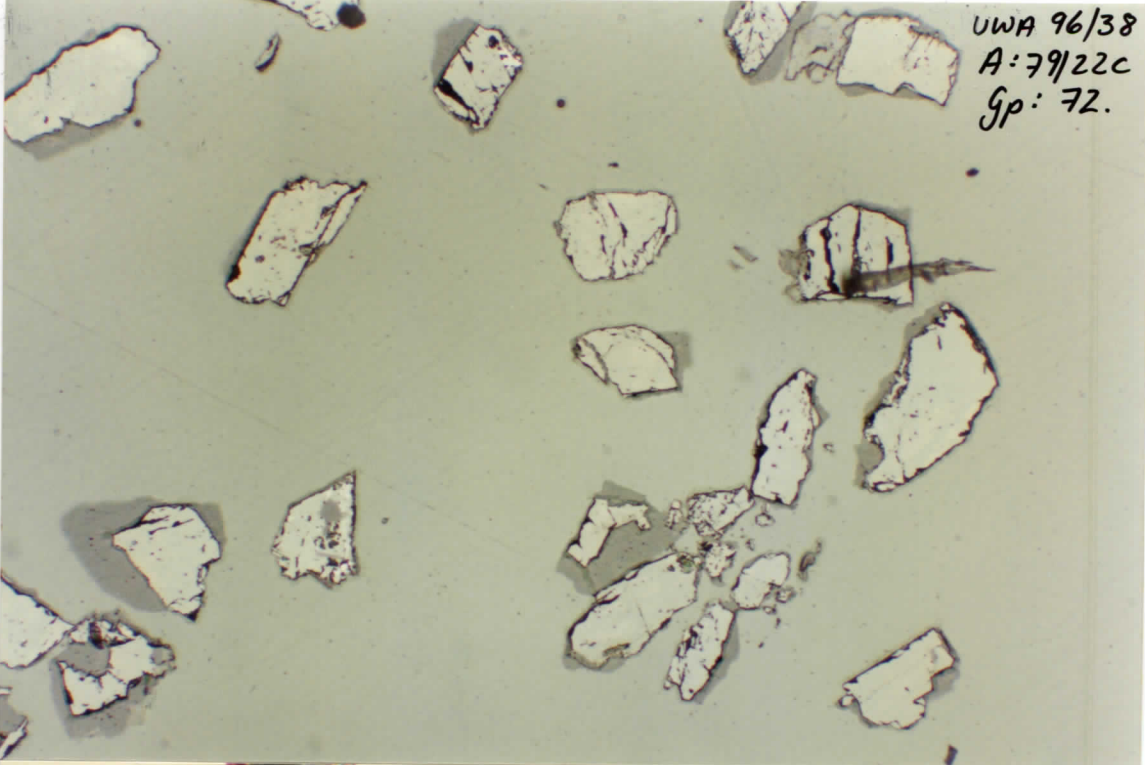
UWA 96-38
A: 79/22C
Gp: 70



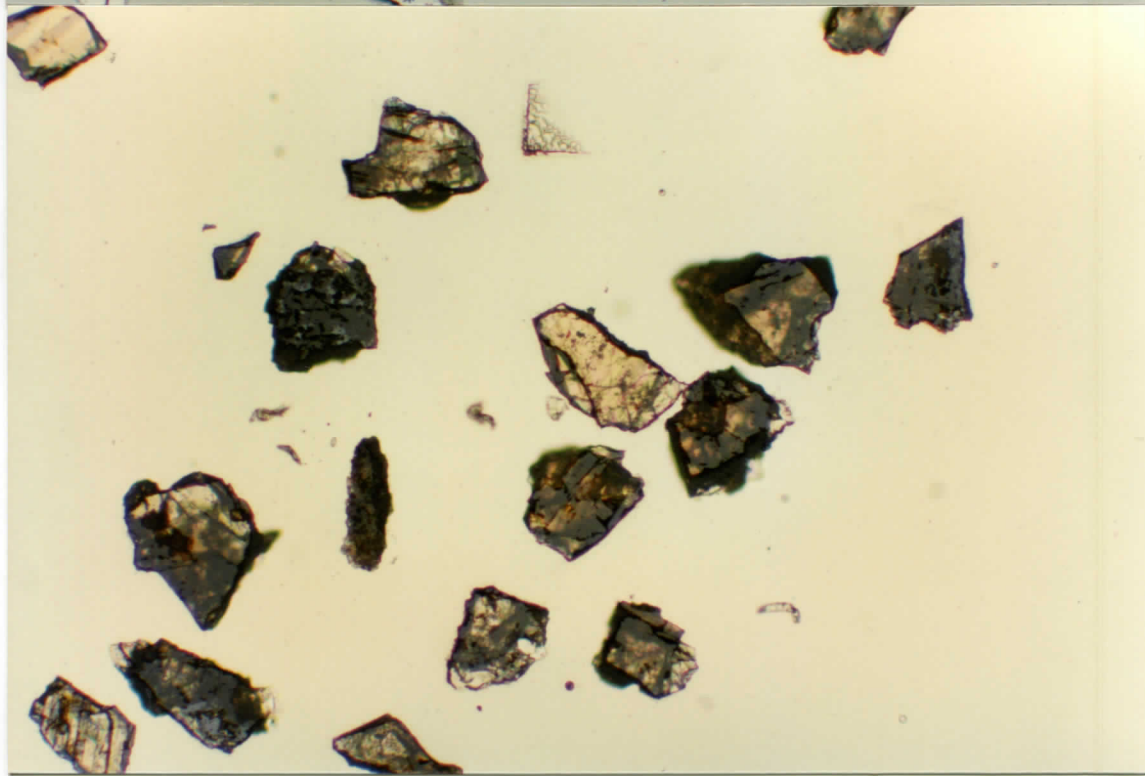
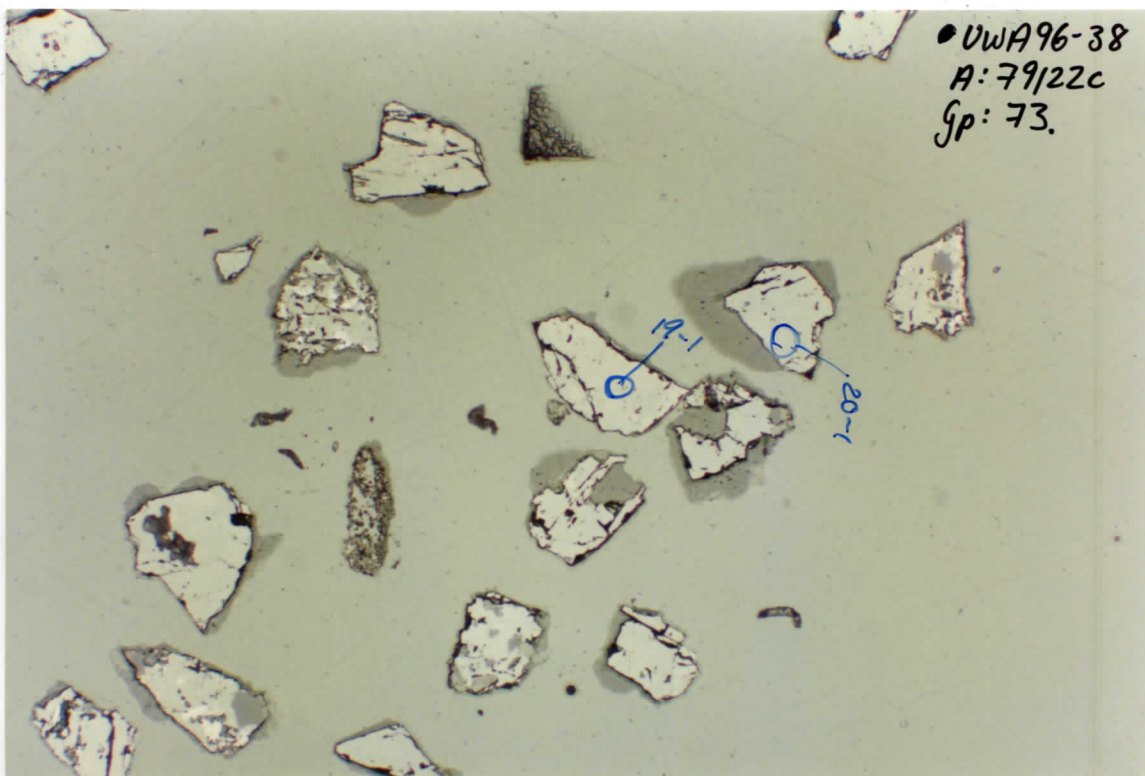
UWA 96-38
A: 79122c
gp: 71.



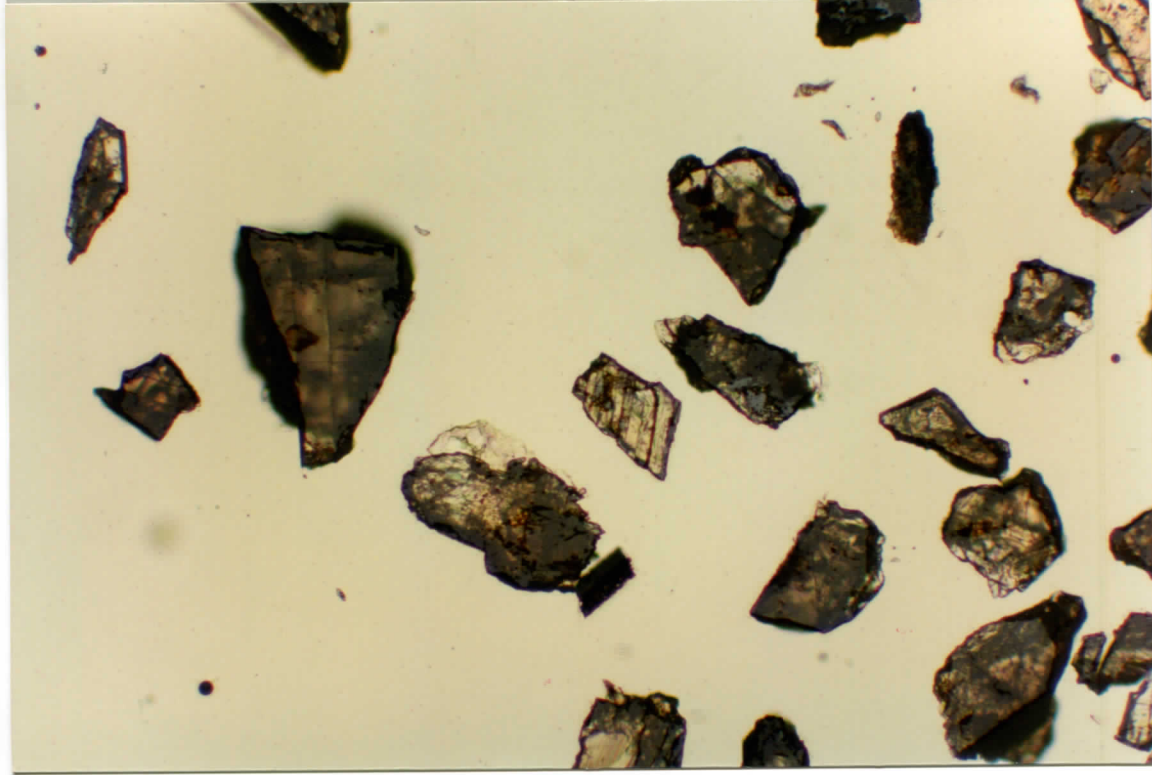
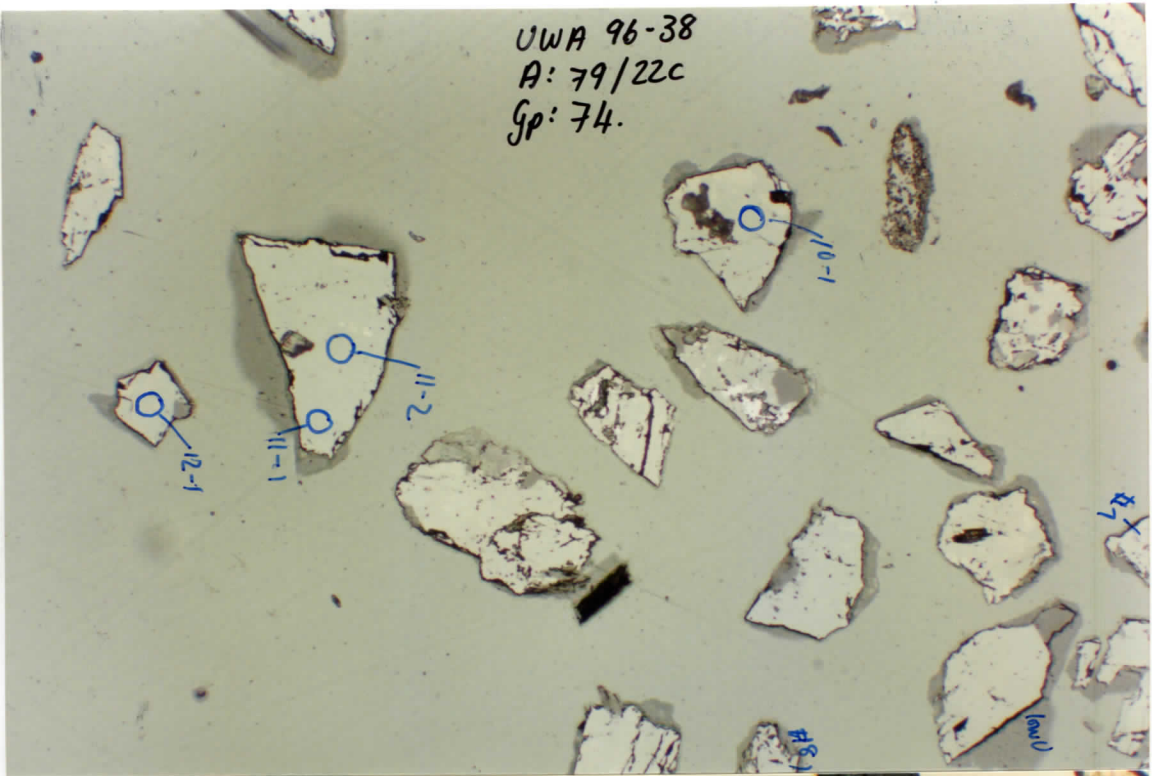
UWA 96/38
A: 79/22C
Sp: 72.



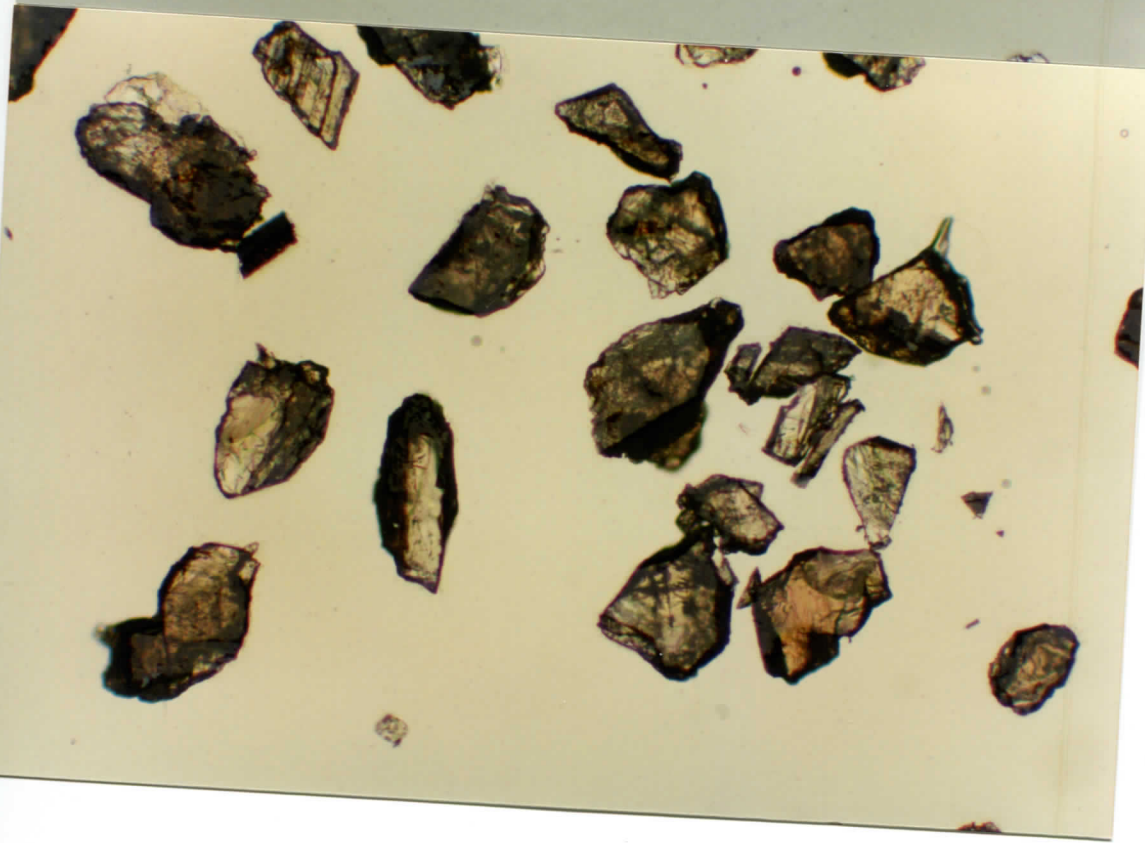
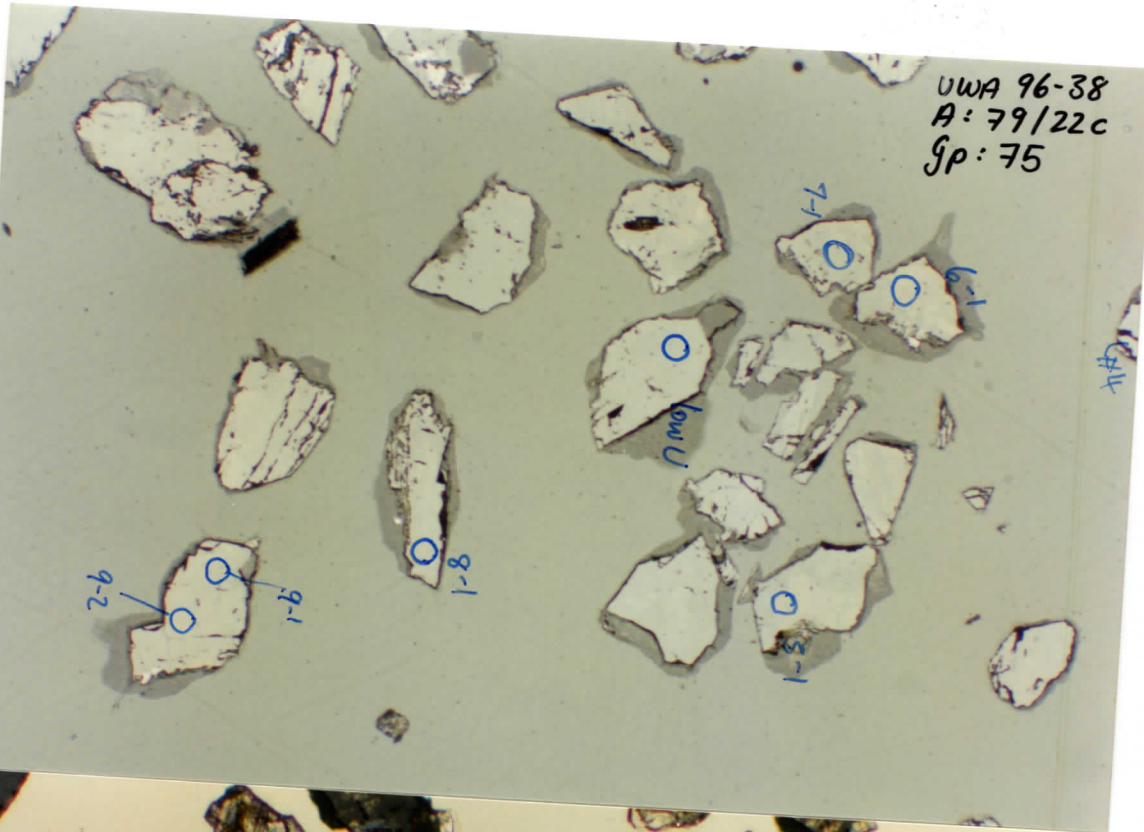
• UWA96-38
A: 79/22c
Gp: 73.



UWA 96-38
A: 79/22c
Gp: 74.

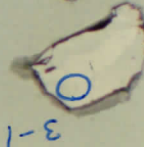


UWA 96-38
A: 79/22c
gp: 75



UWA 96-38
A: 79/22c
gp: 76.

4-1



3/8 low vi

1-1

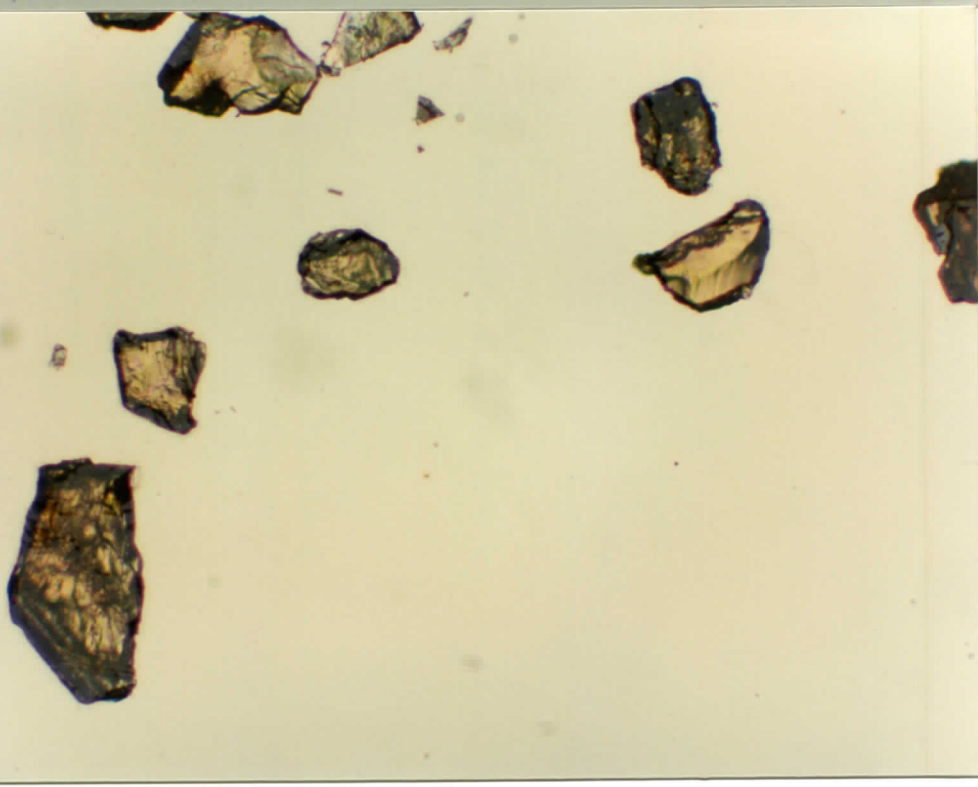


2-2



1-2

2-3



VWA 96 - 38
A: 79/22C
gp: 77

