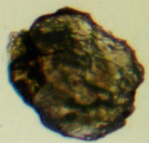
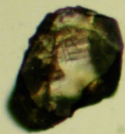
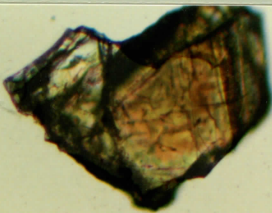
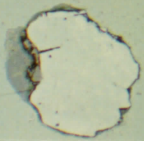
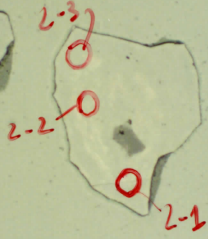
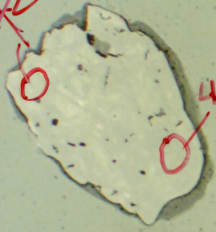
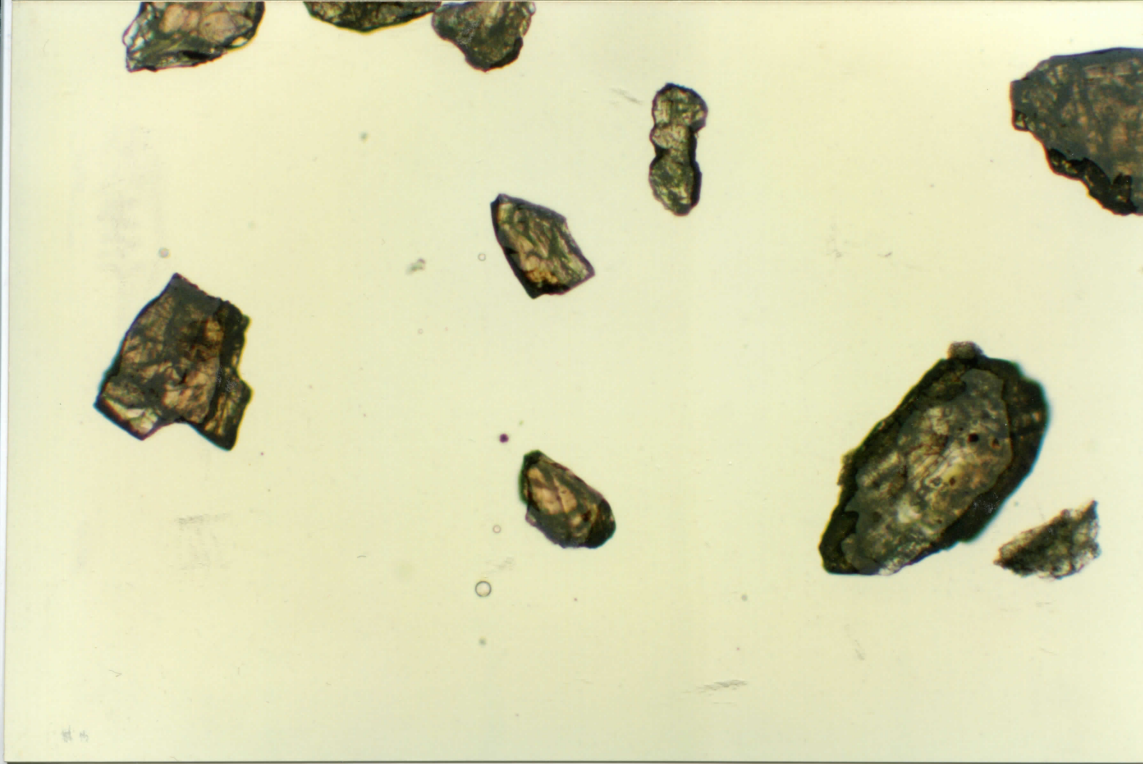
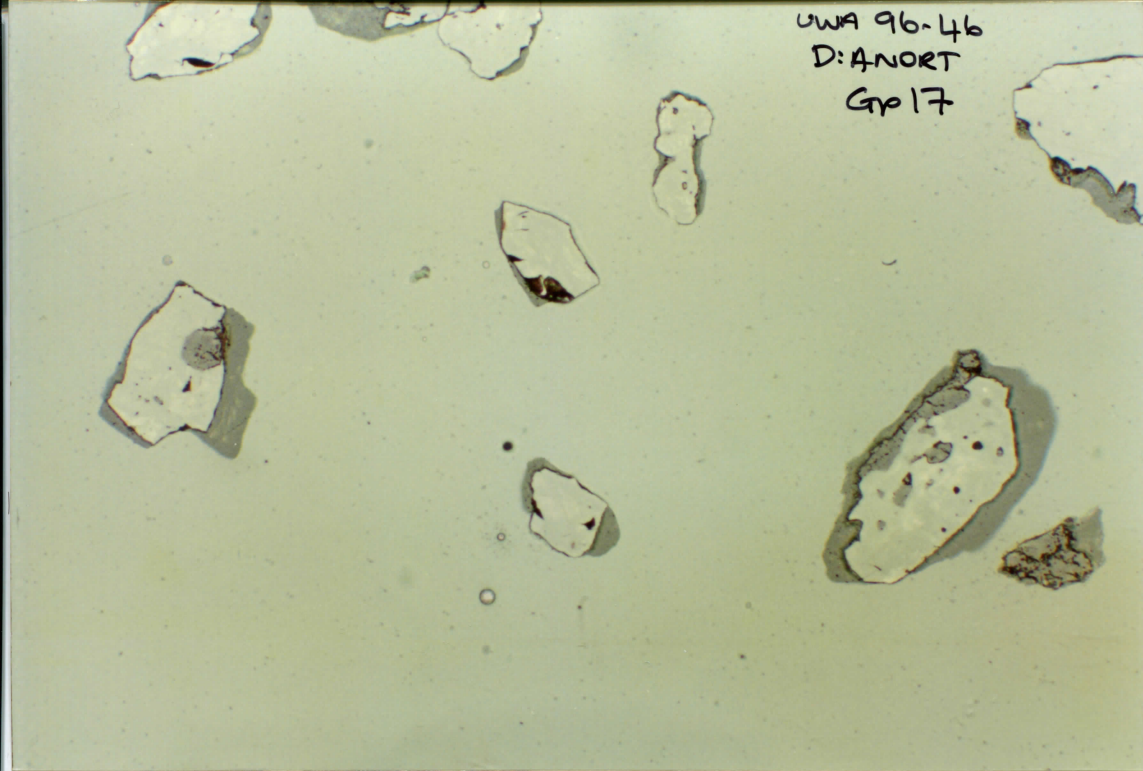


UWA 96-46
O: ANORT
Gp 1b

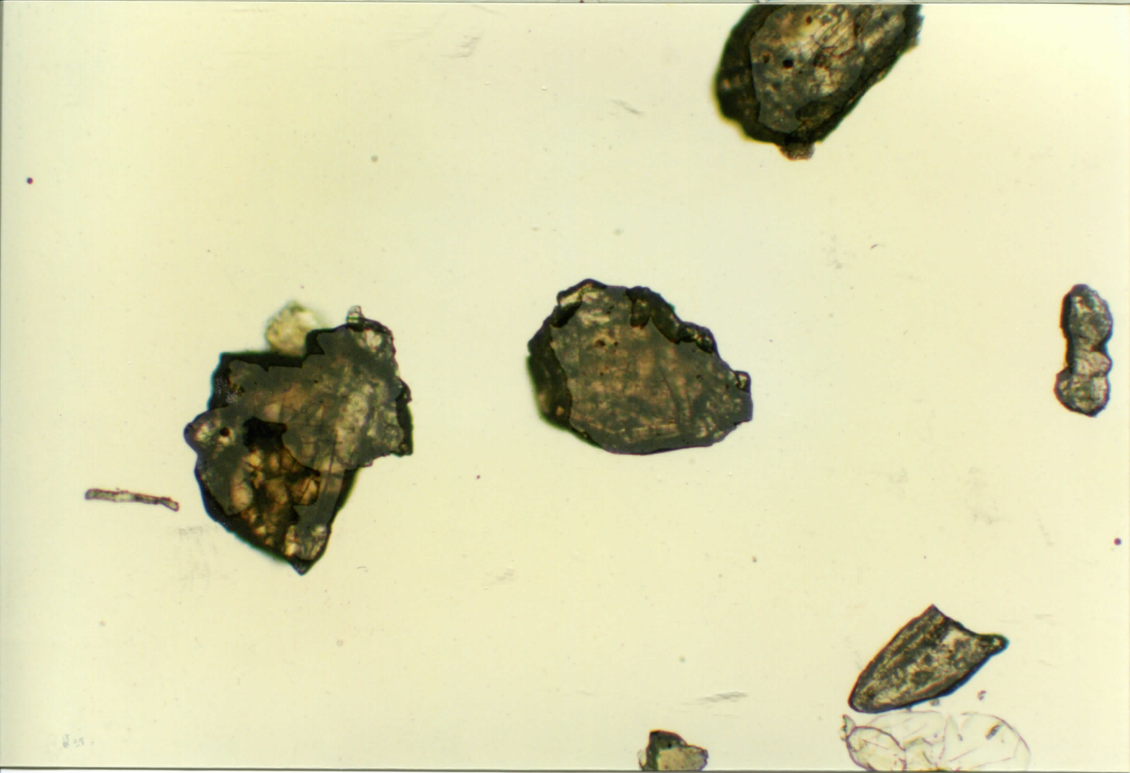
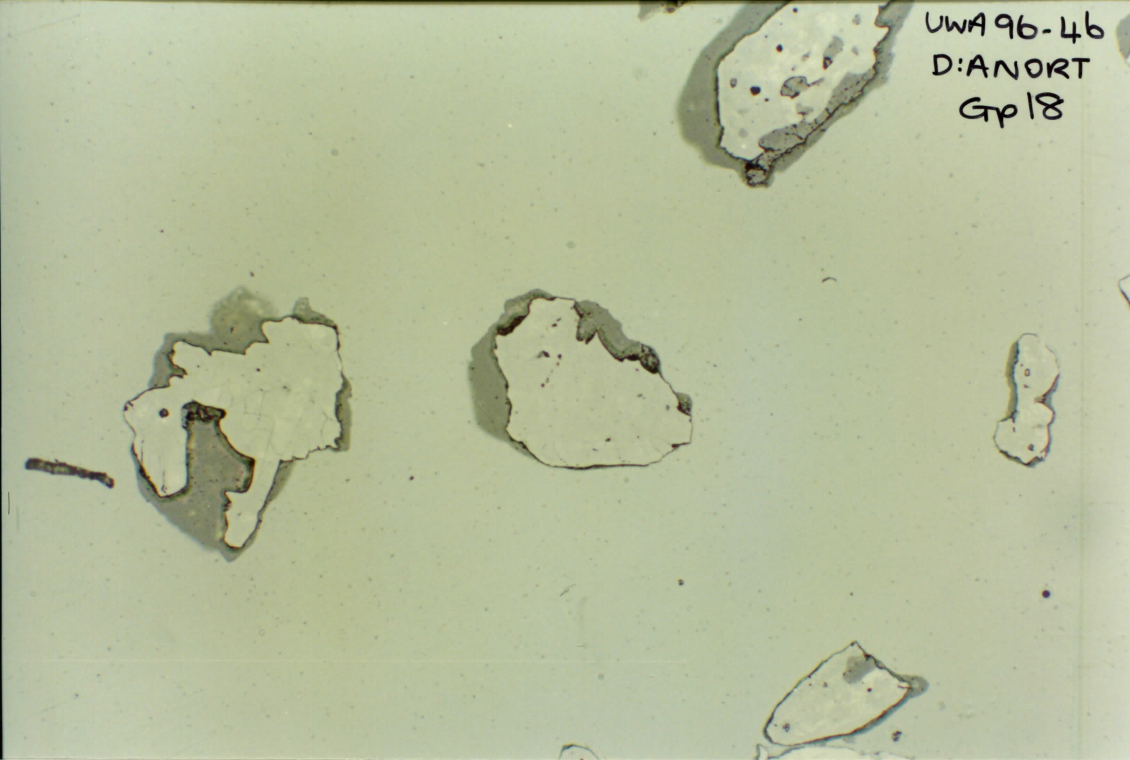
~~4-2~~ abundant high Ab204



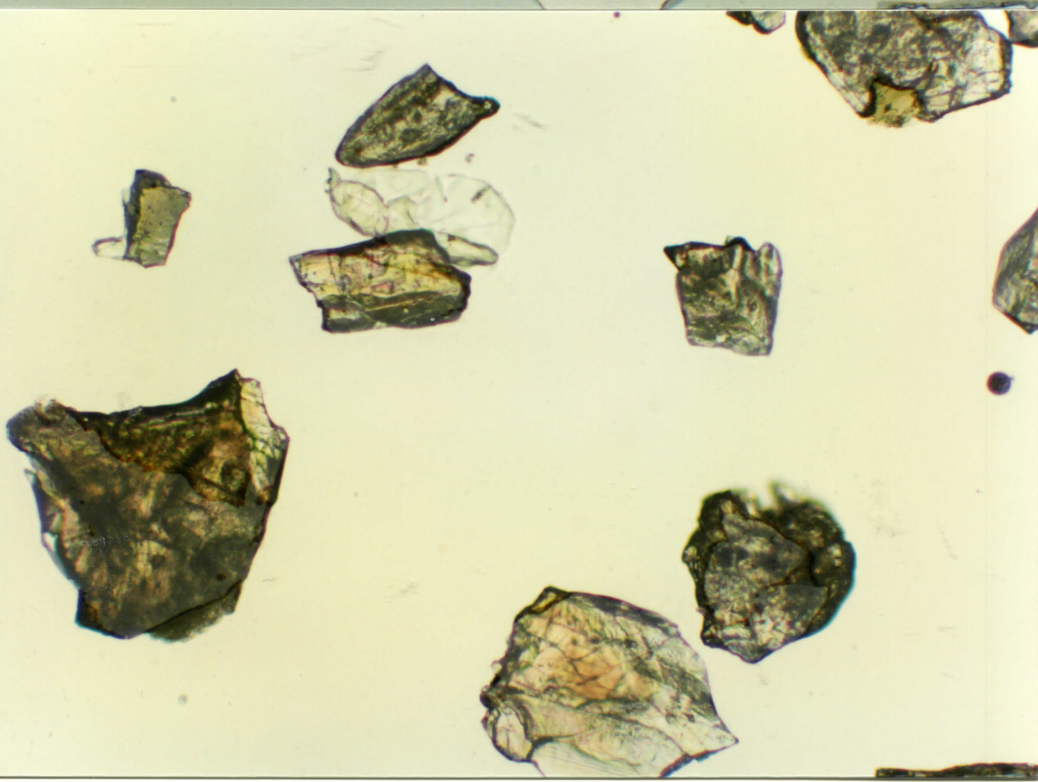
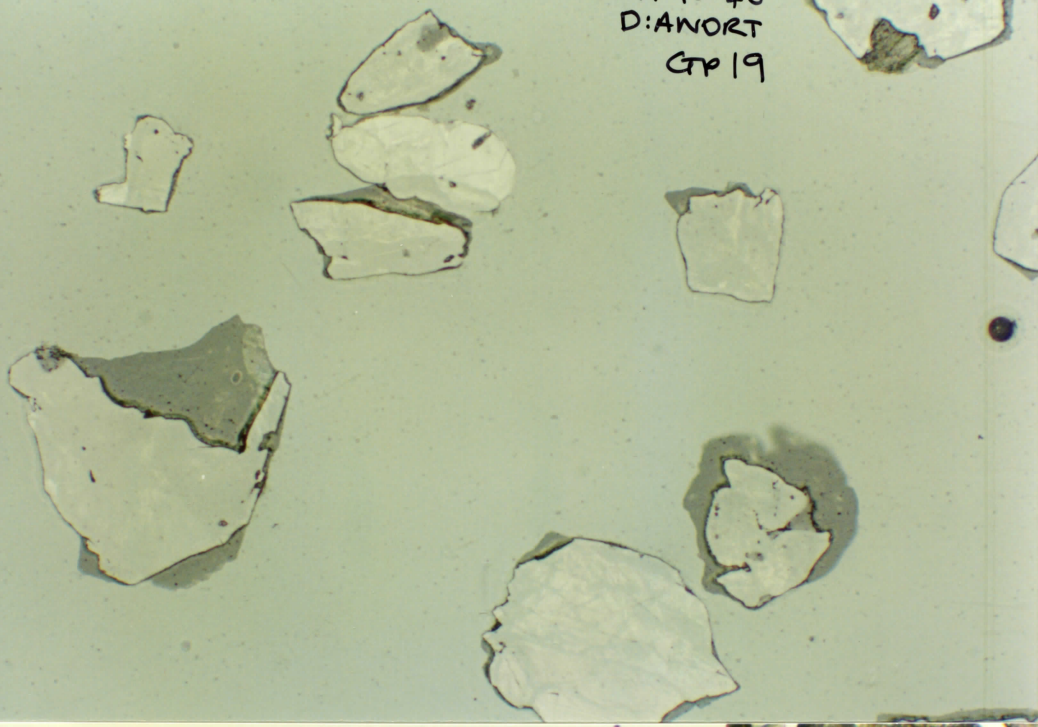
UWA 96-46
D: ANORT
Grp 17



UWA 96-46
D:ANORT
Gp 18

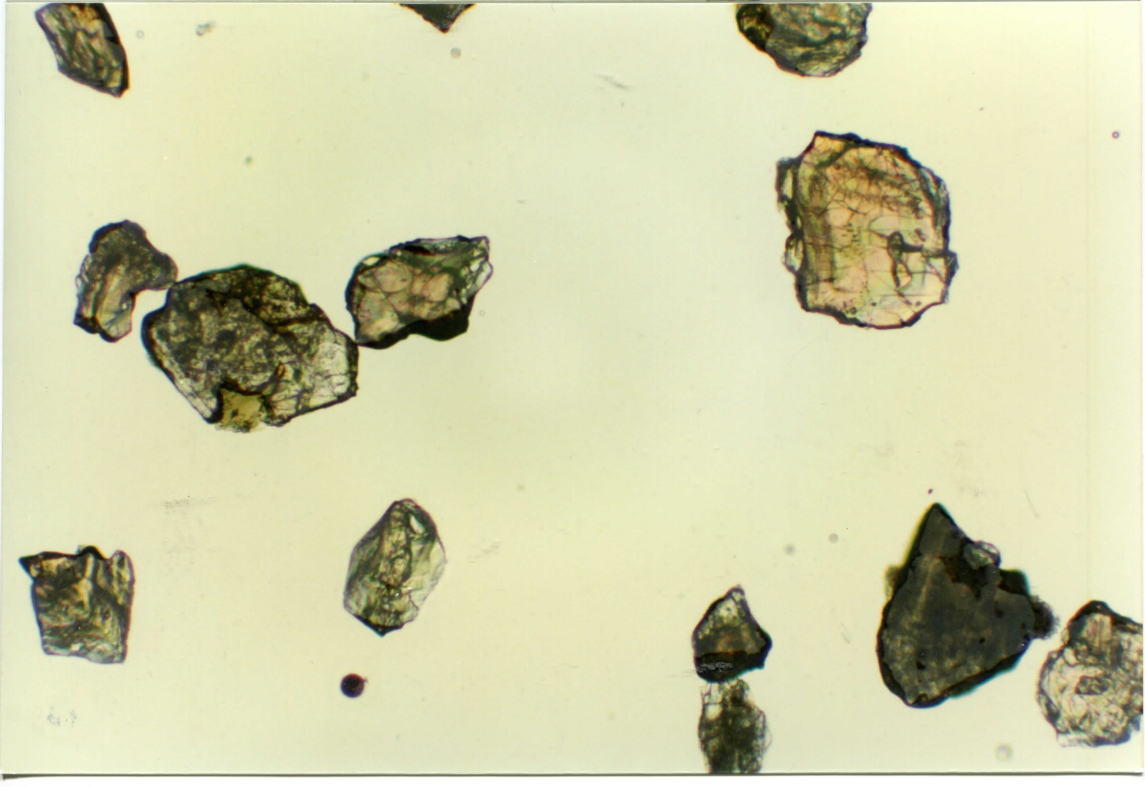
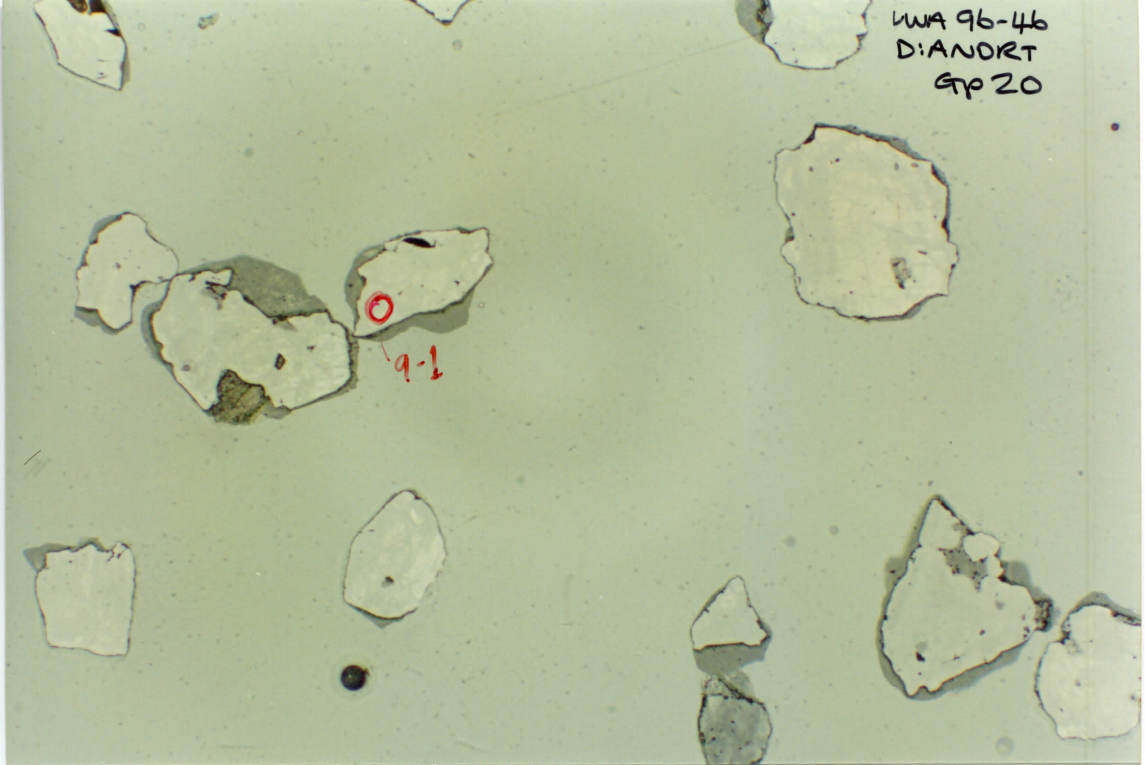


UWA 96-46
D:ANORT
CTP 19

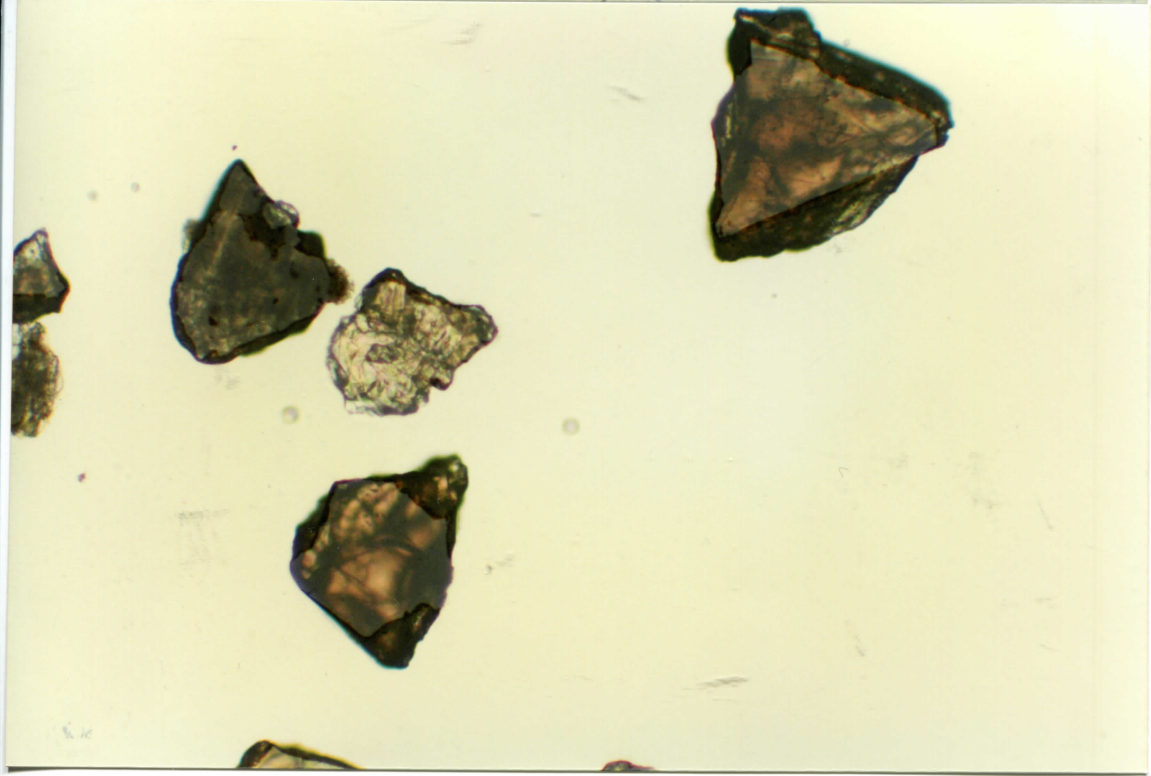
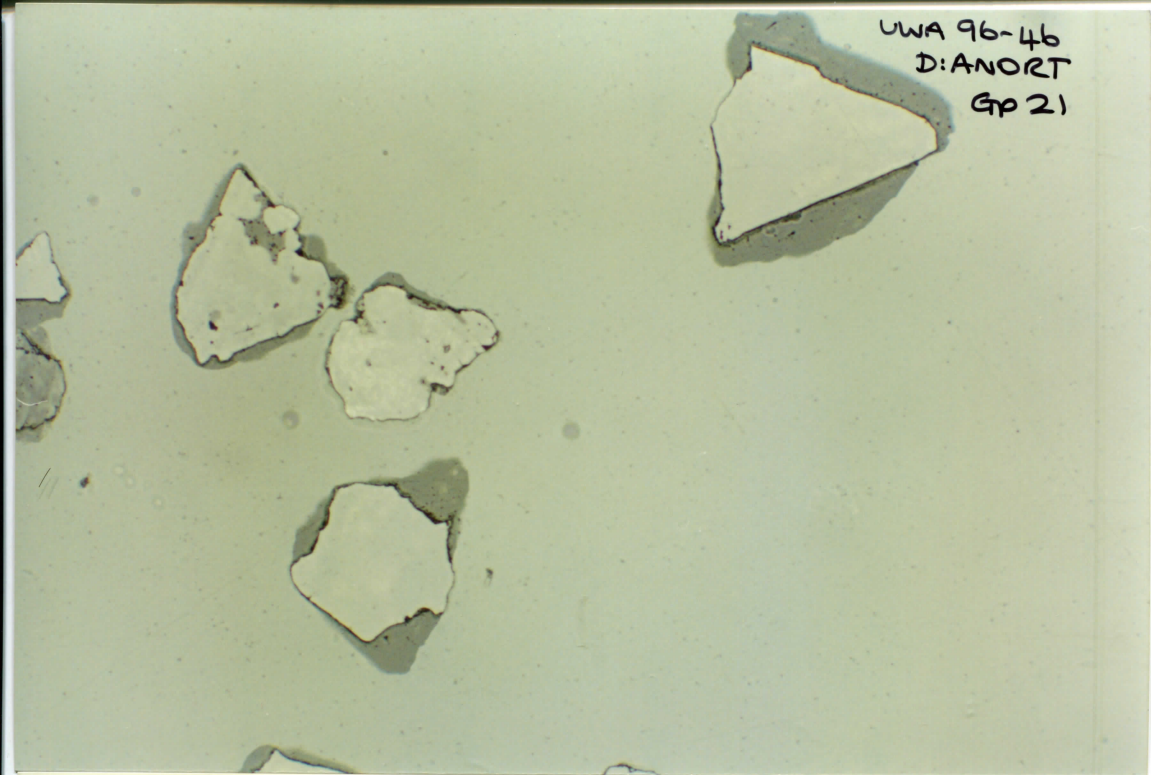


WA 96-46
D:ANDRT
SP 20

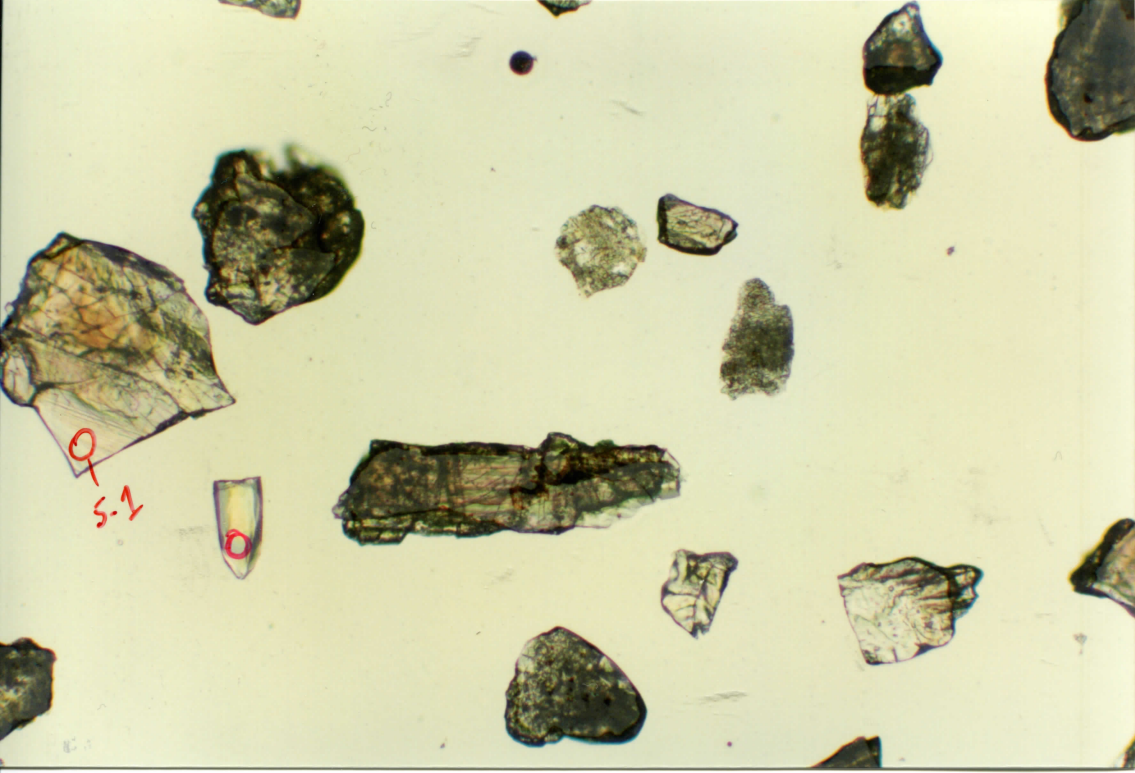
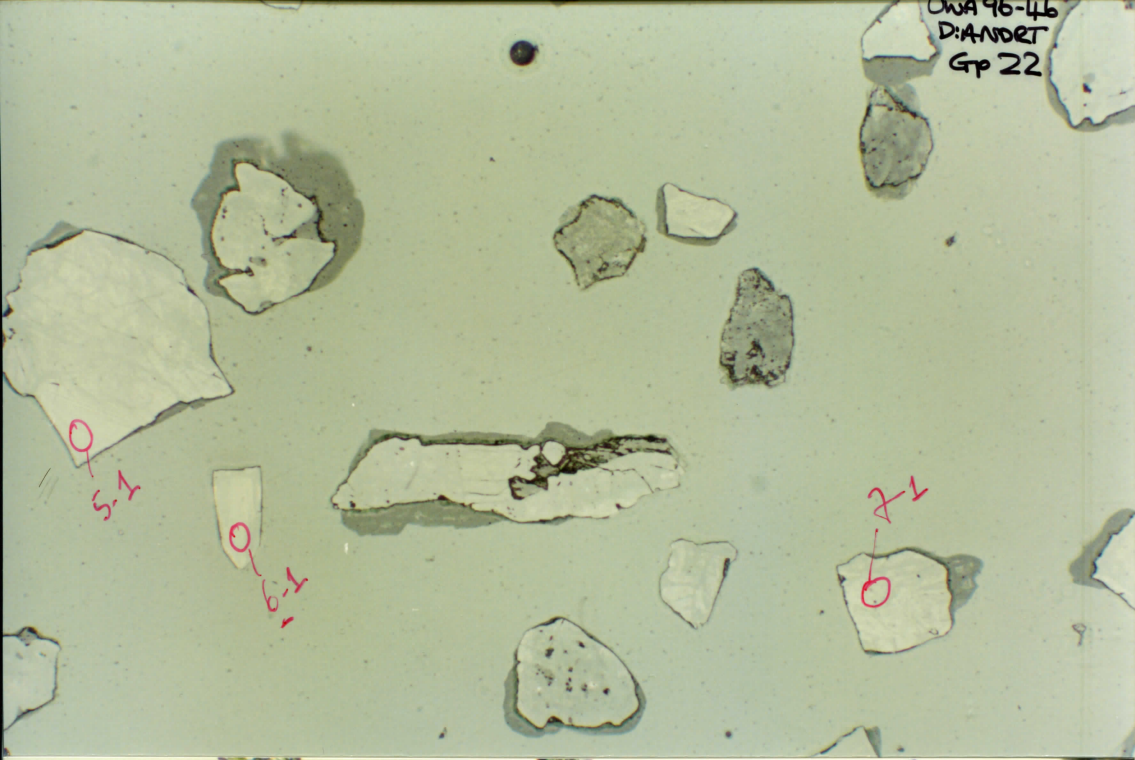
9-1



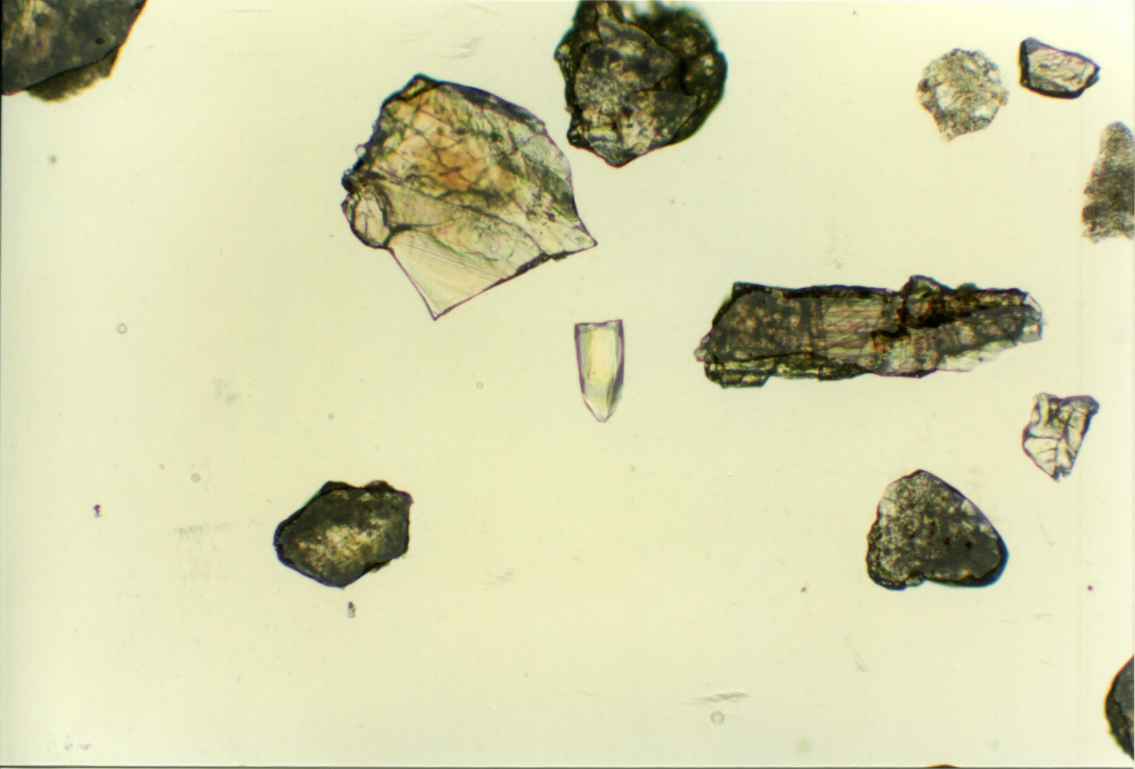
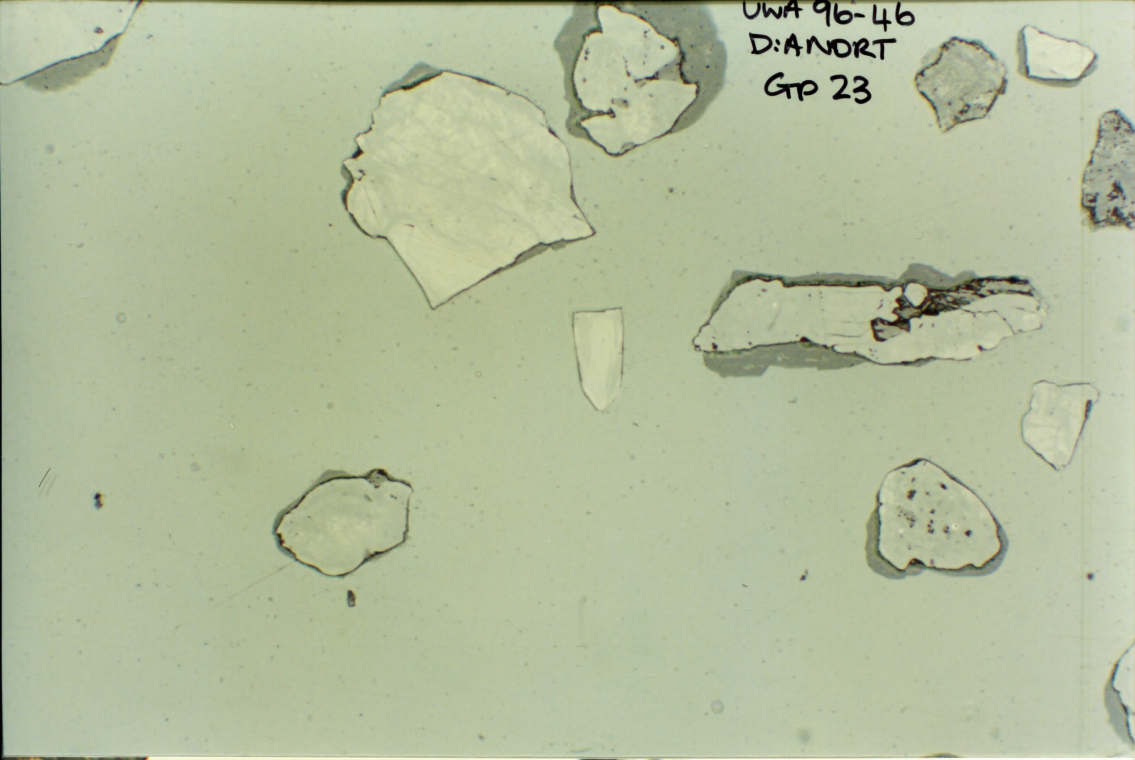
UWA 96-46
D:ANORT
Gp 21



CWA 96-46
D:ANDRE
Gp 22

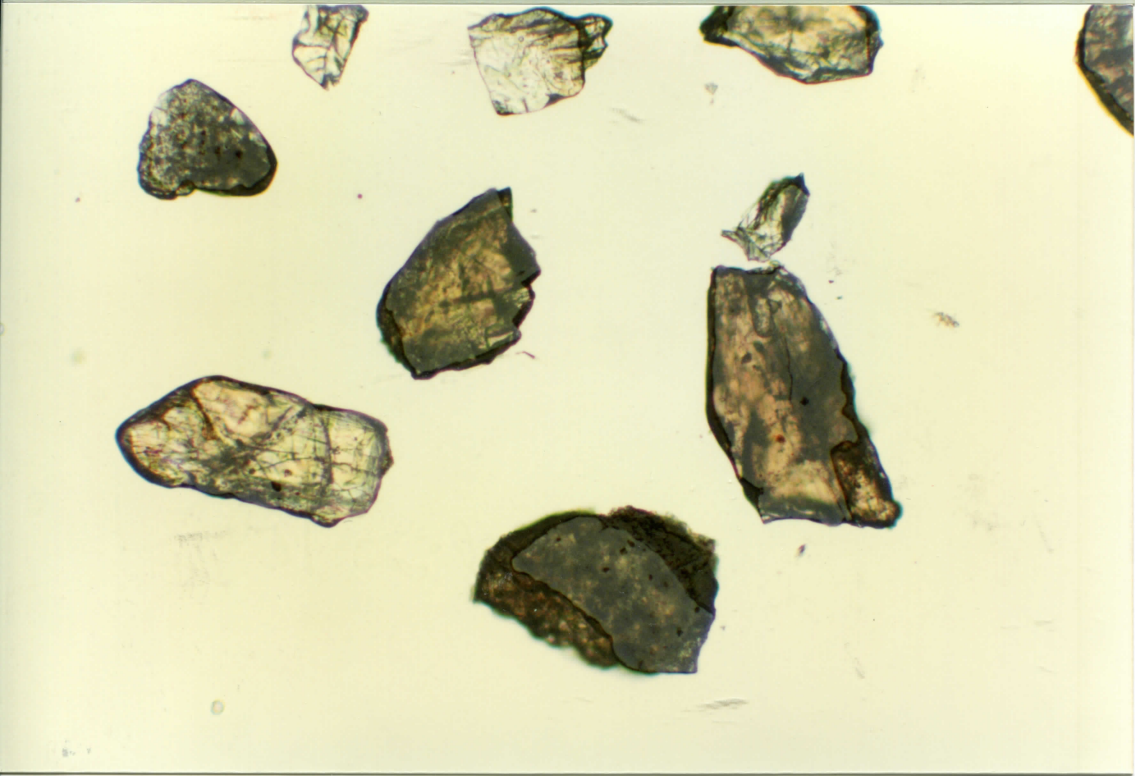


UWA 96-46
D:ANDORT
GP 23



OWA 96-46
DIANORT
GP 24

0-8-1



OWA 96-46
D:ANORT
GTP 25

