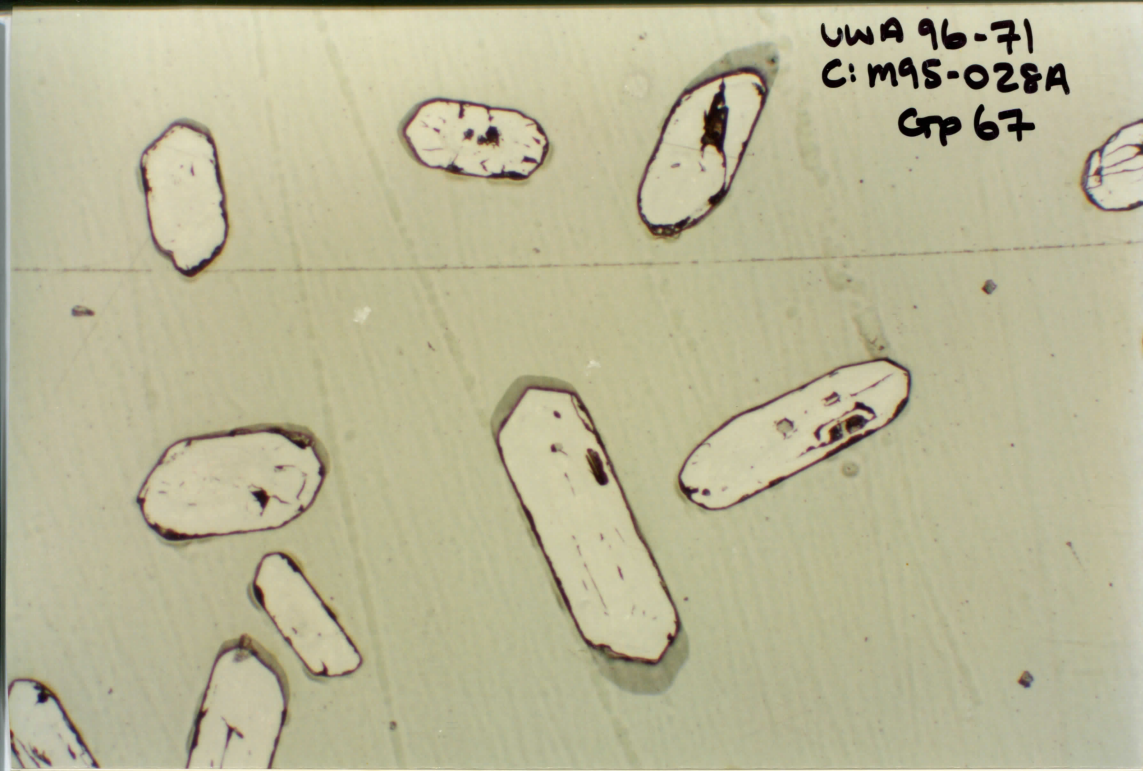


UWA 96-71
C: M95-028A
GTP 66



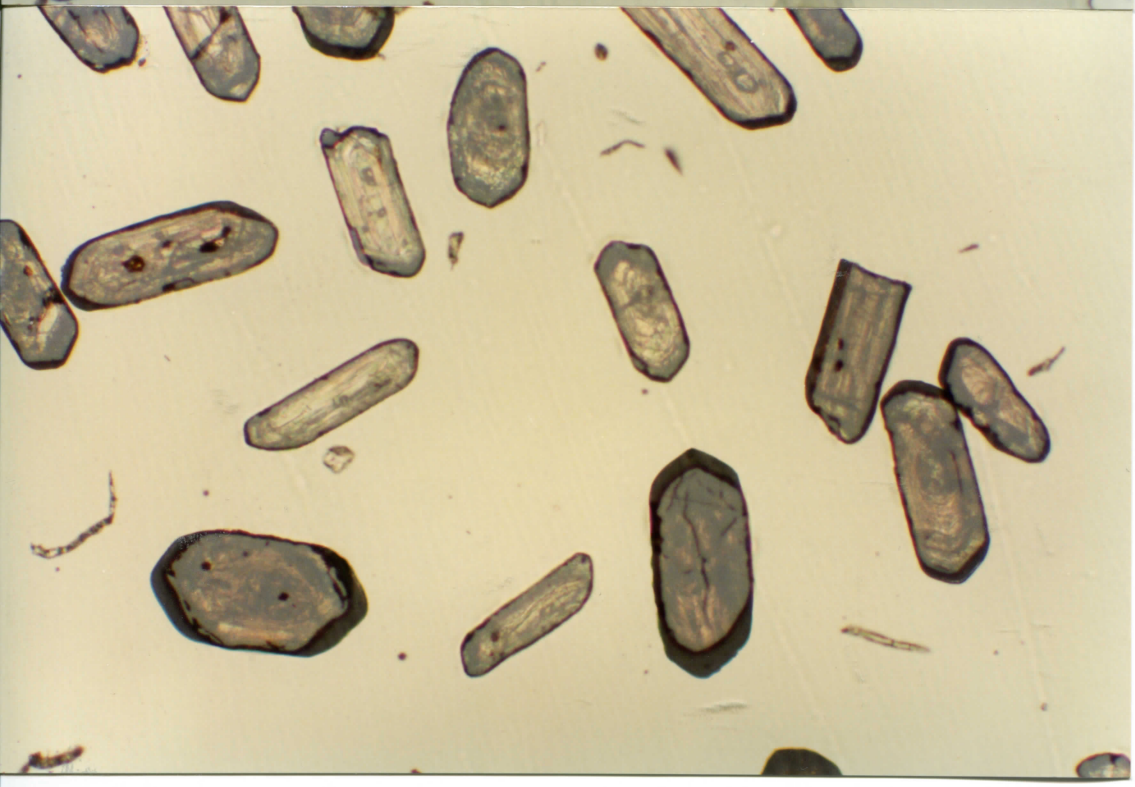
UWA 96-71
C: M95-028A
CTP 67



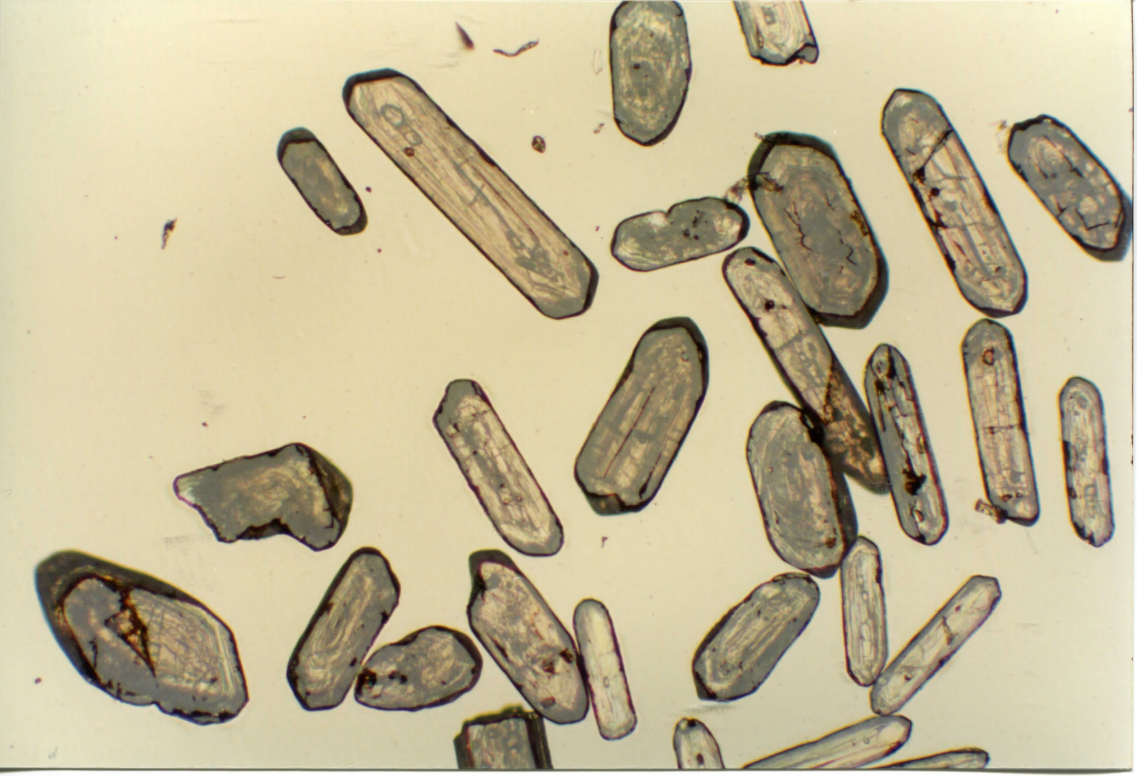
SW 10-71
C: M95-028A
CTP 68



UWA 96-71
C:MQS-028A
GTP 69



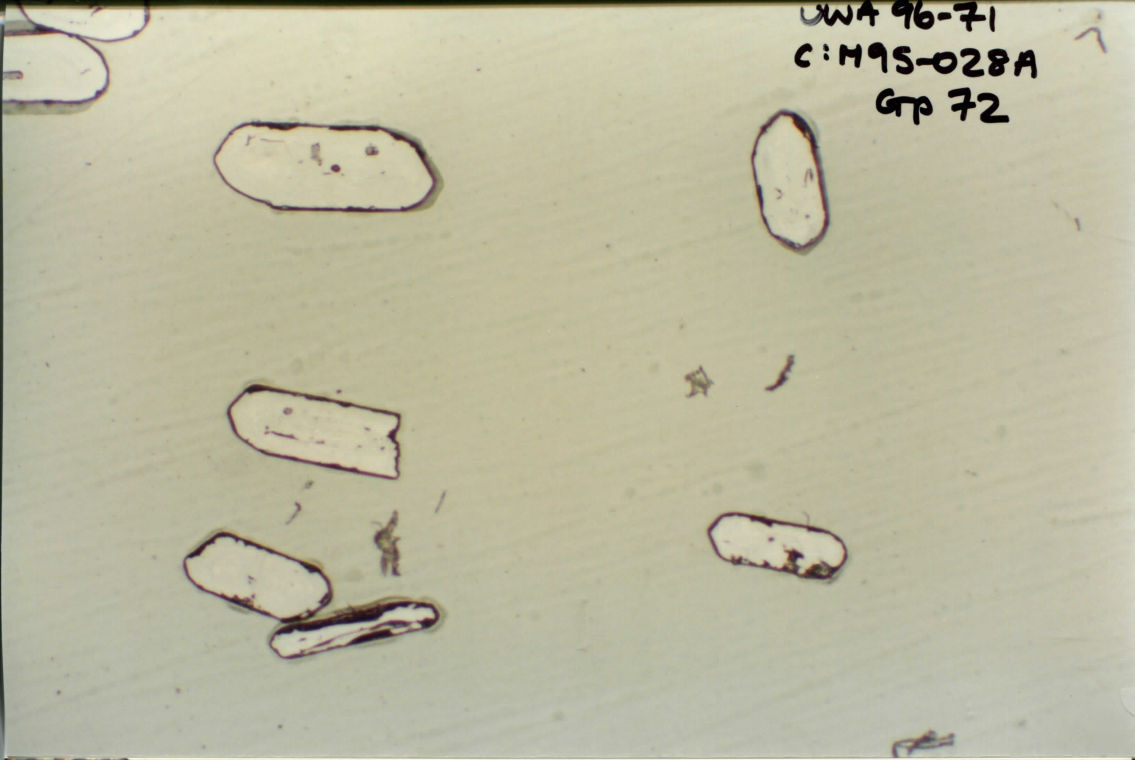
OWA 96-71
C: M95-028A
Gp 70



SW 40-71
C: M95-028A
Cup 71



UWA 96-71
C: M95-028A
GTP 72



OWA 96-71
C: MAS-028A
Gp 73

SEM 15

SEM 1

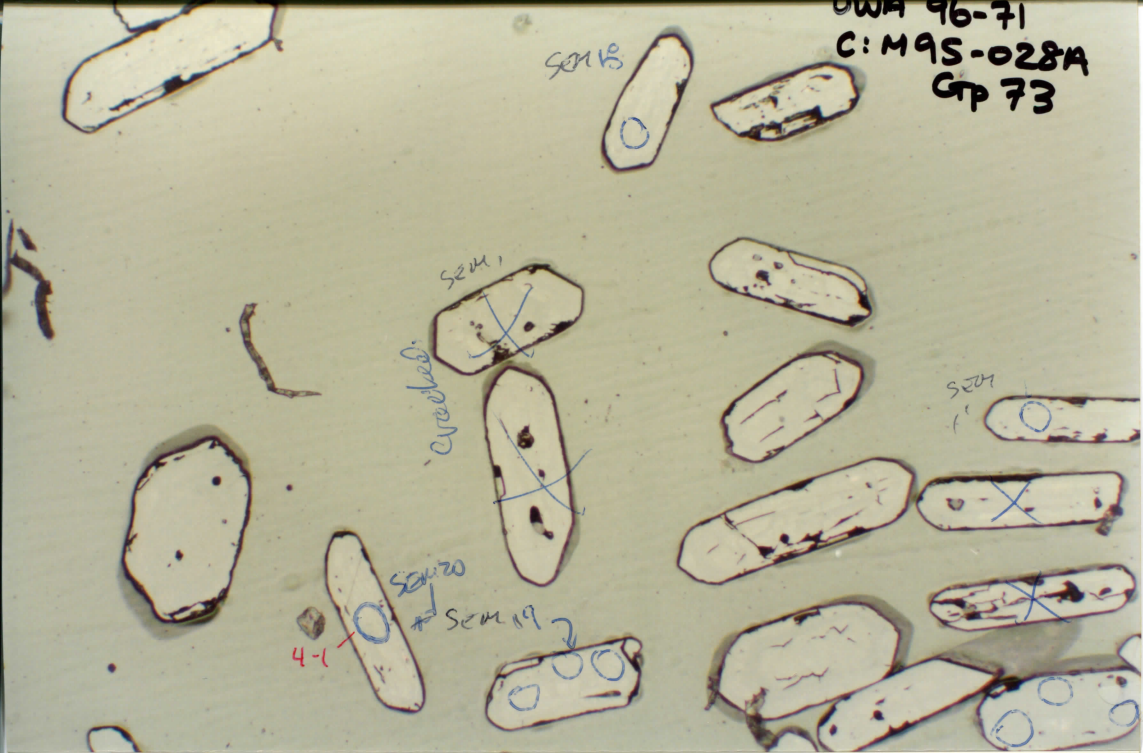
C. trichoides

SEM 1

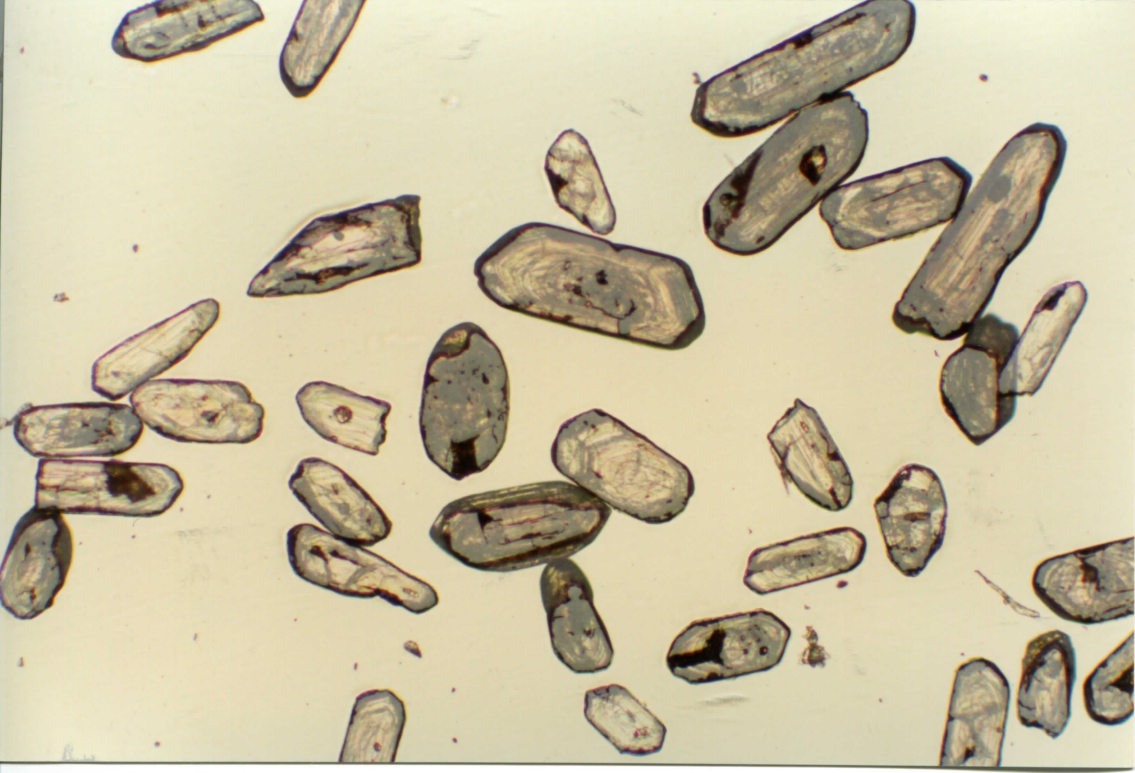
SEM 20

SEM 19

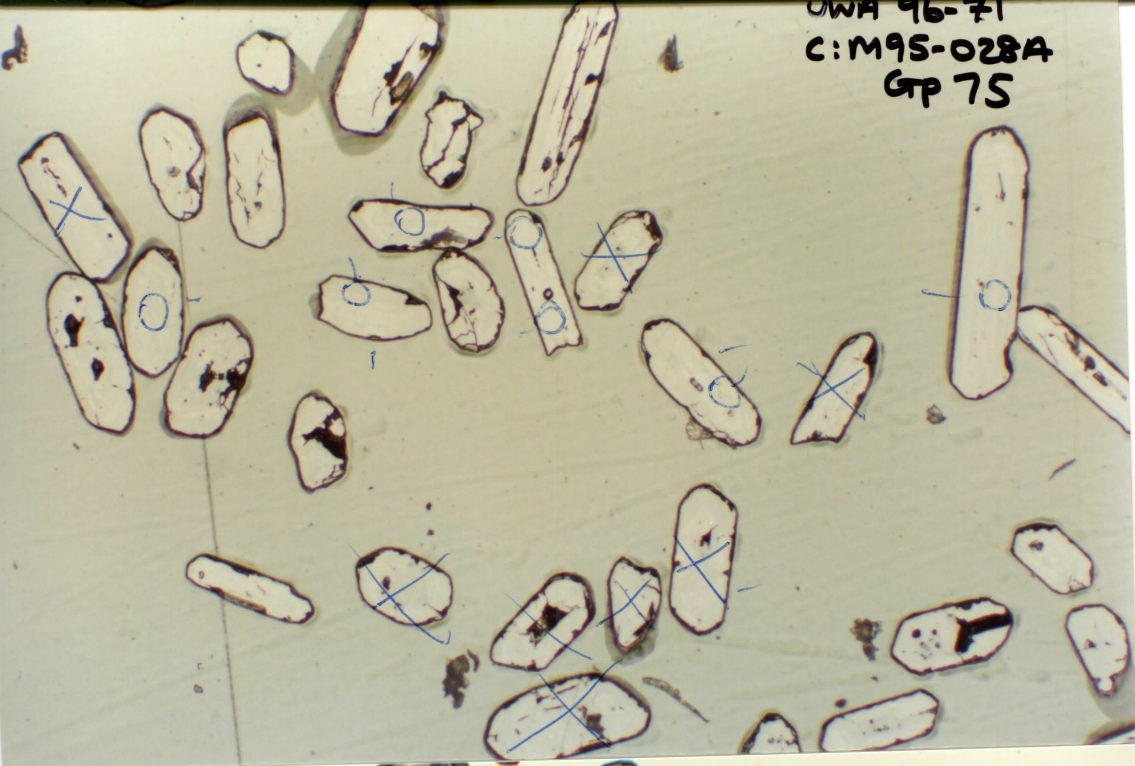
4-1



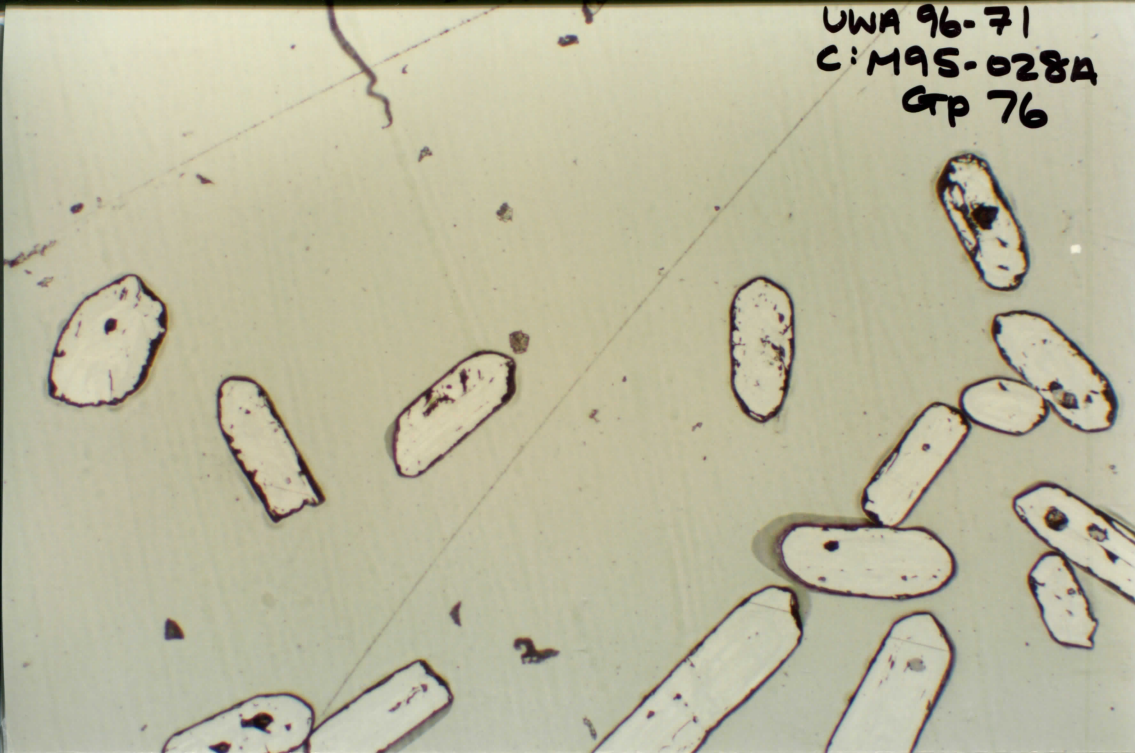
VWA 96-71
C: M95-028A
GTP 74



OWA 96-71
C: M95-028A
GTP 75



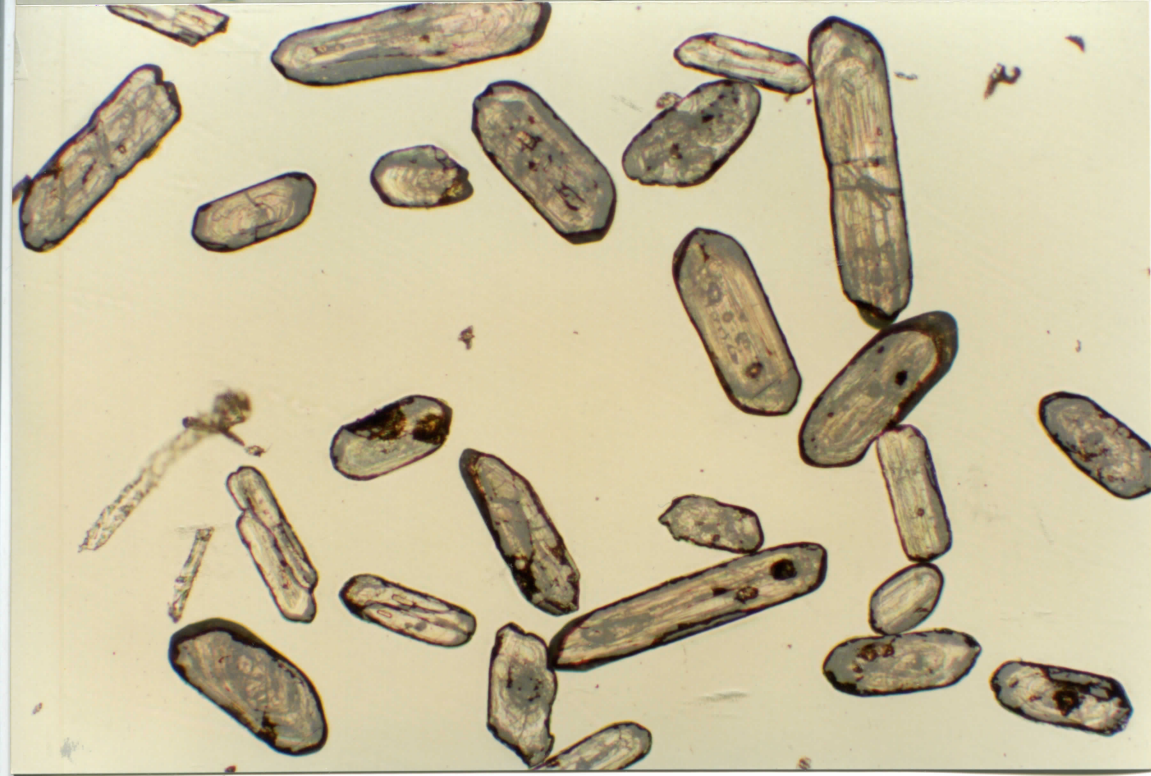
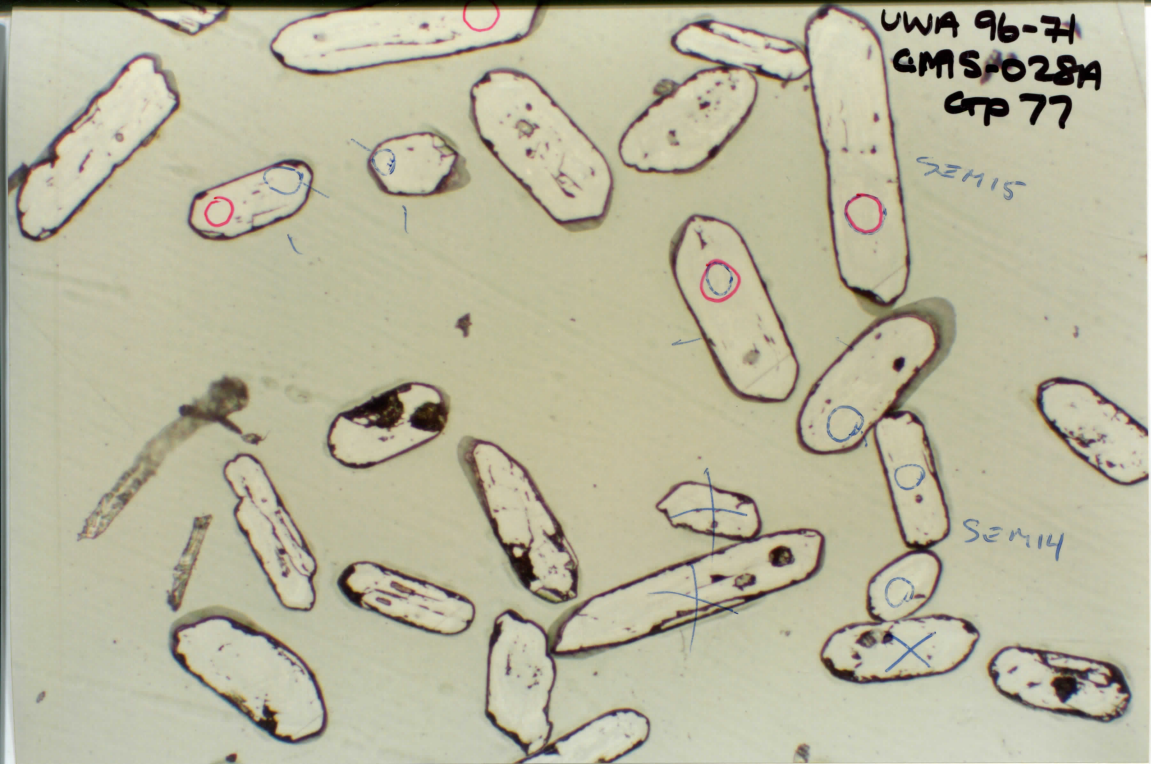
UWA 96-71
C:MAS-028A
GTP 76



UWA 96-71
GMS-028A
CTP 77

SEM15

SEM14



UWA 96-71
C: M95-028A
Gp 78



UWA 96-71
C:MAS-028A
Cp 79



UWA 96-71
C: M95-028A
GTP 80

good

B-1
SEM 9



UWA 96-71
C: MAS-028
GP81

SEM12

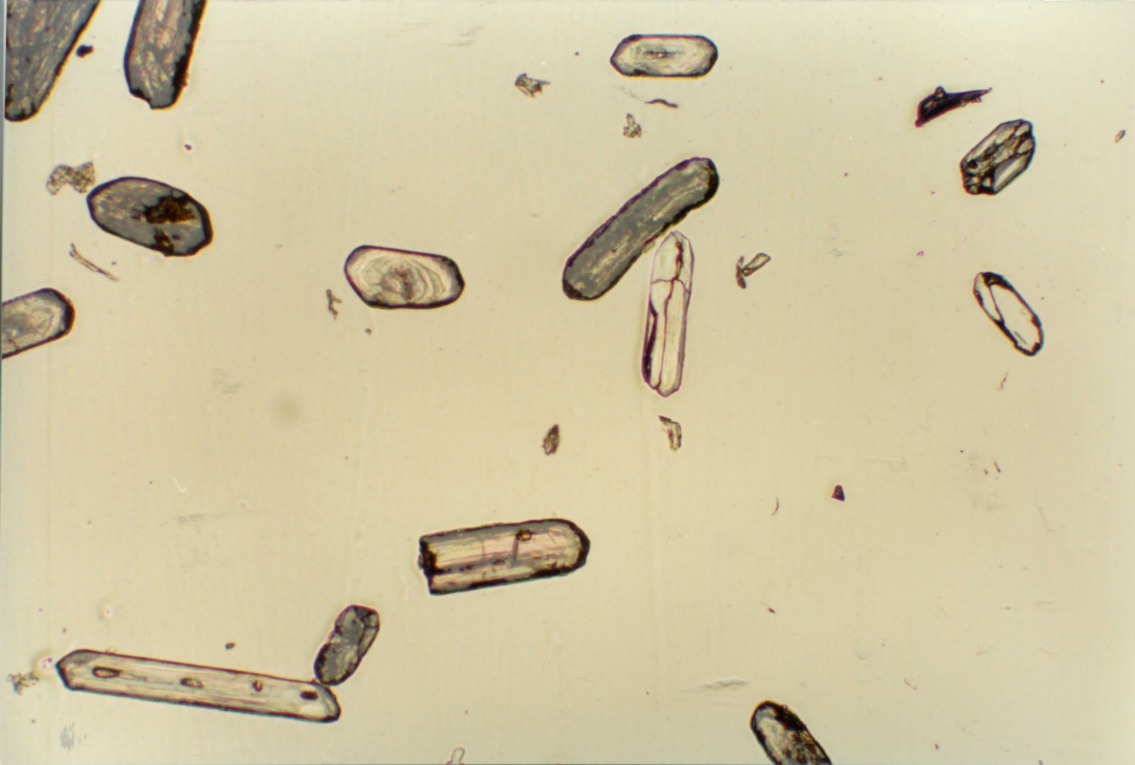
SEM10

12-1

SEM11



UWA 96-71
C: M95-028A 14
Gp 82

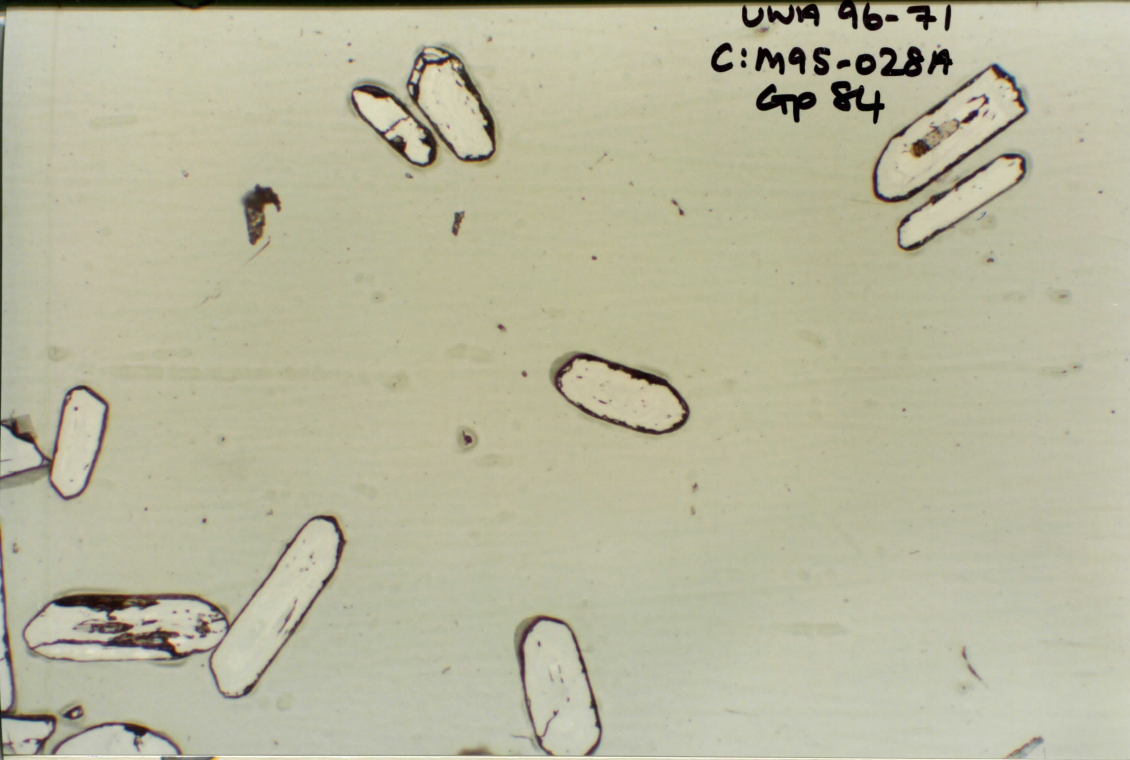


UWA 96-71
C: M95-028A
GTP 83

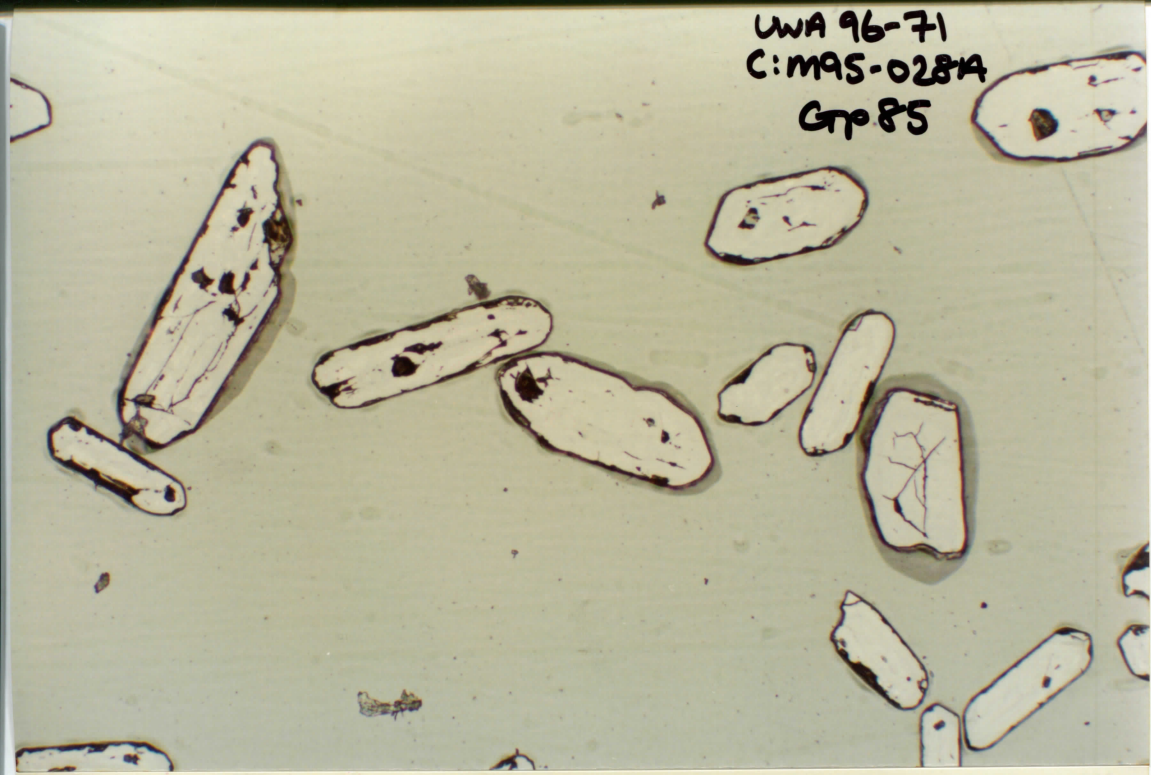
SEM13



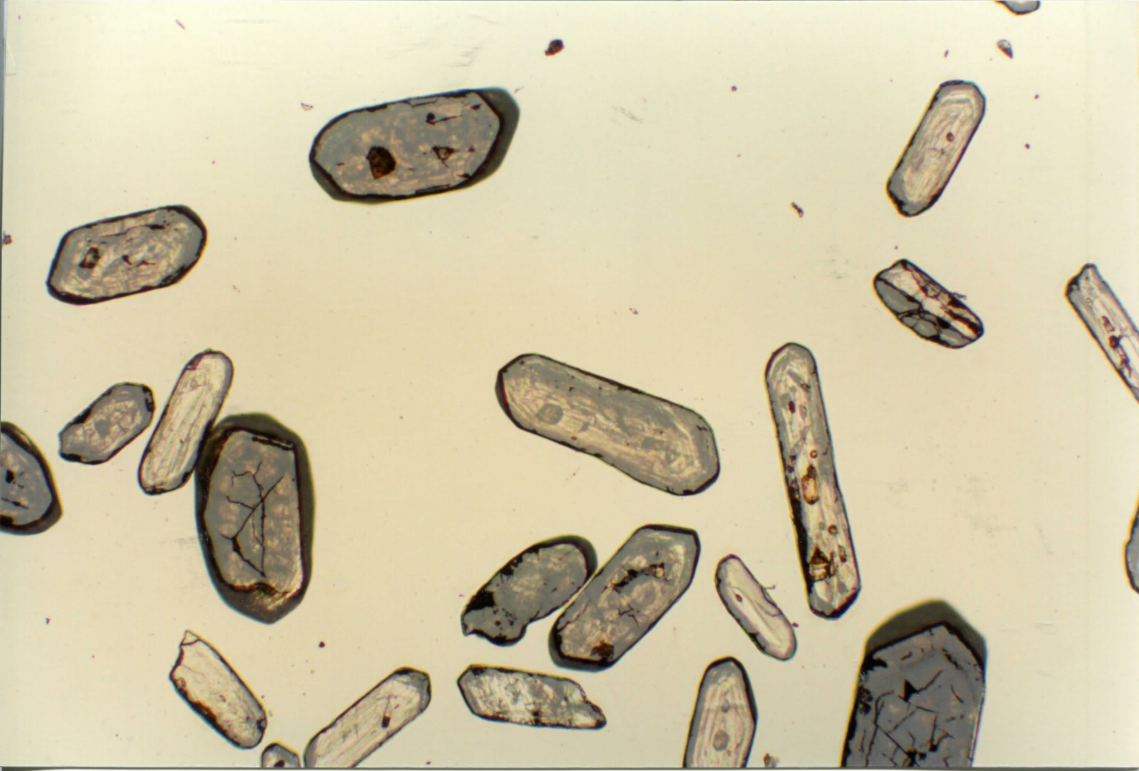
UWA 96-71
C:MAS-028A
GTP 84



LWA 96-71
C:MAS-0281A
GTP 85



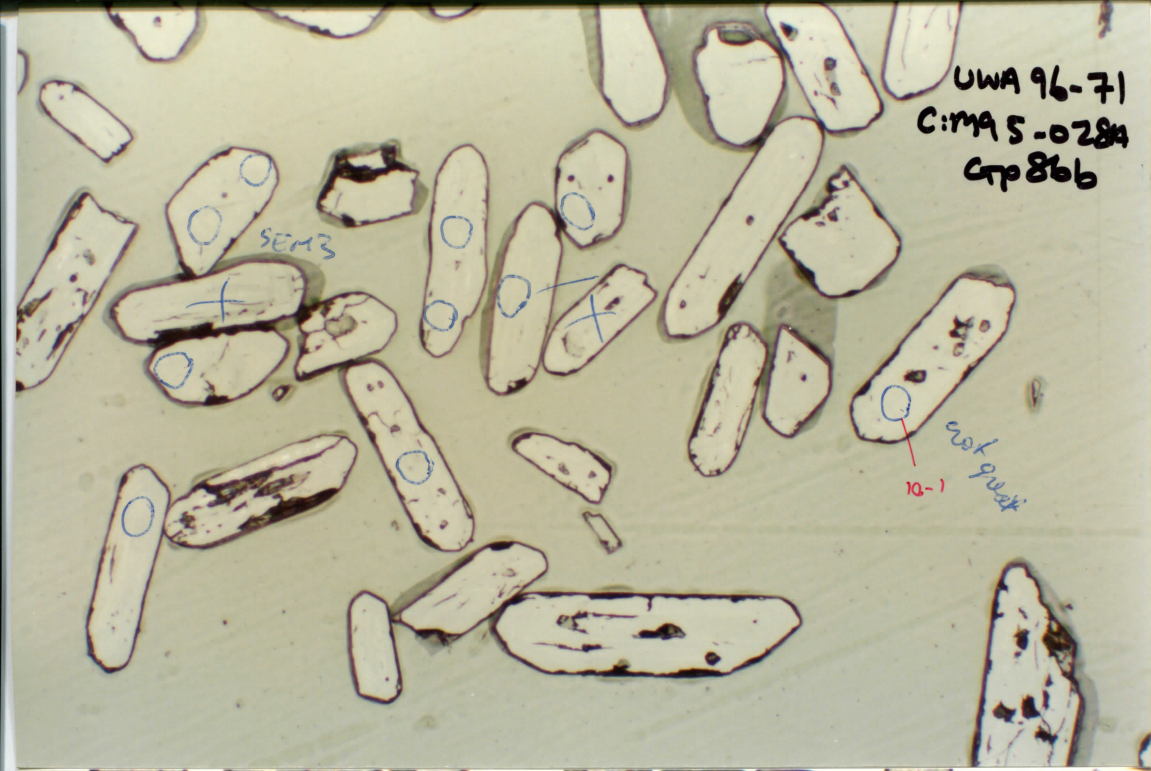
UWA 96-72
C: M95-028A
GTP 869



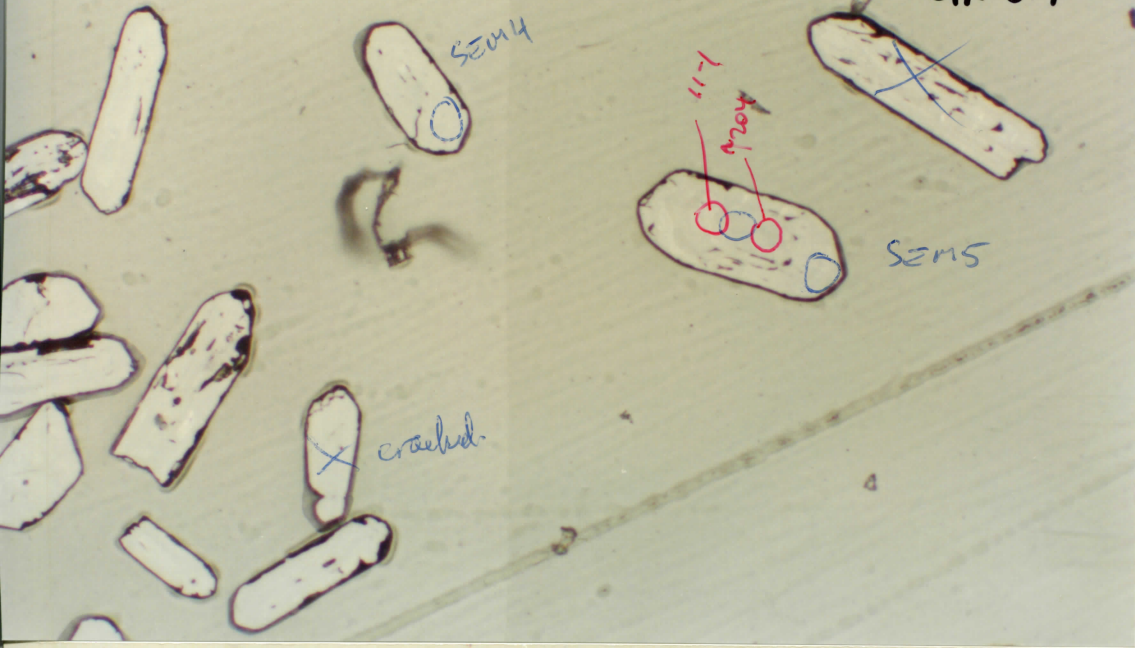
UWA 96-71
C:MA 5-0284
CTP 866

SEM3

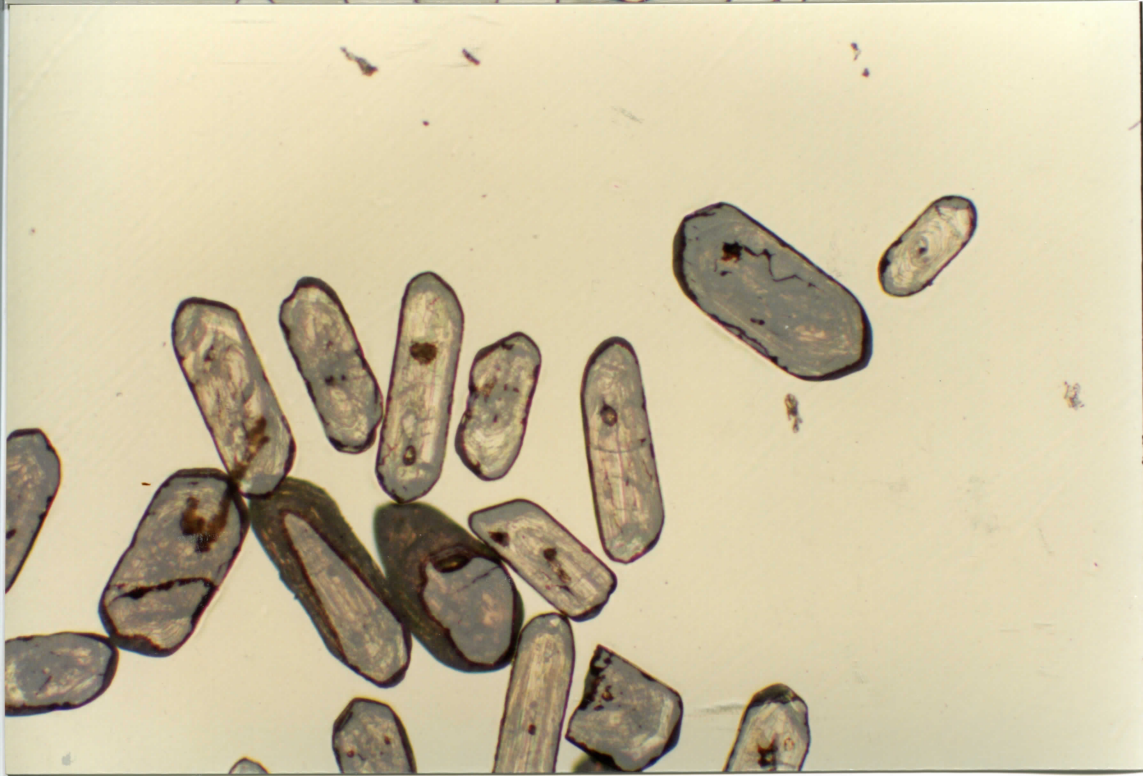
cut part
10-1



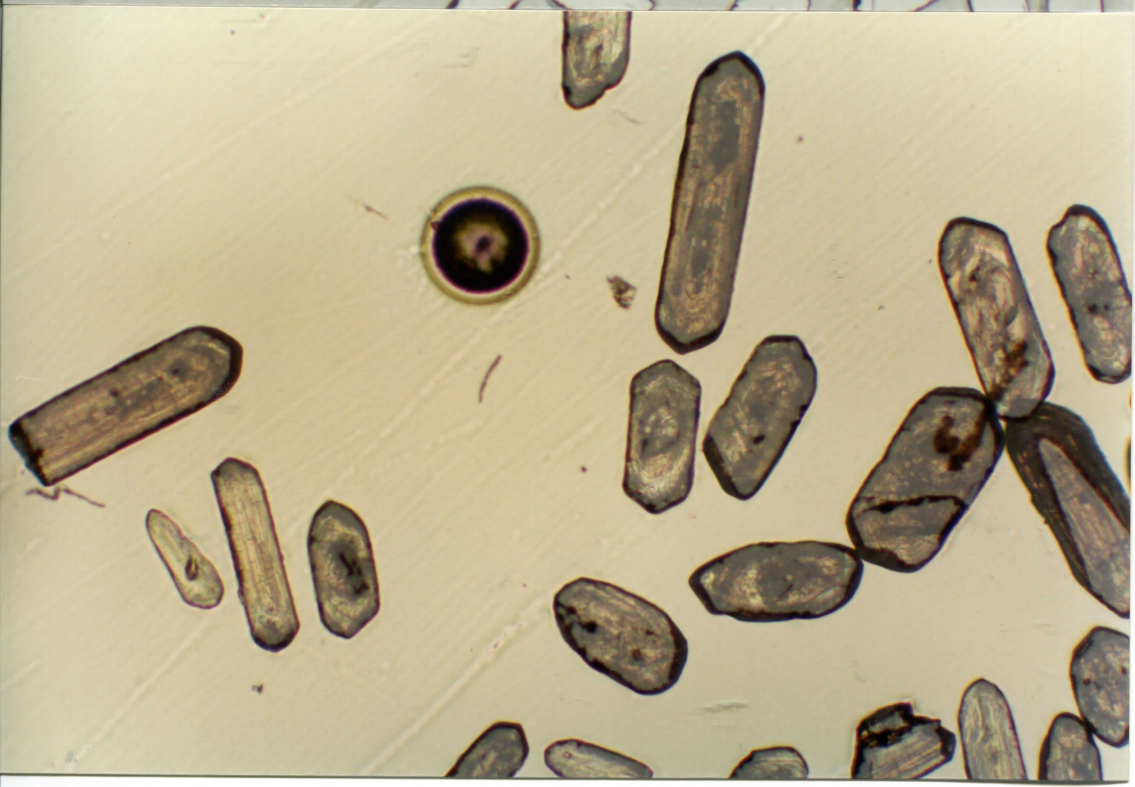
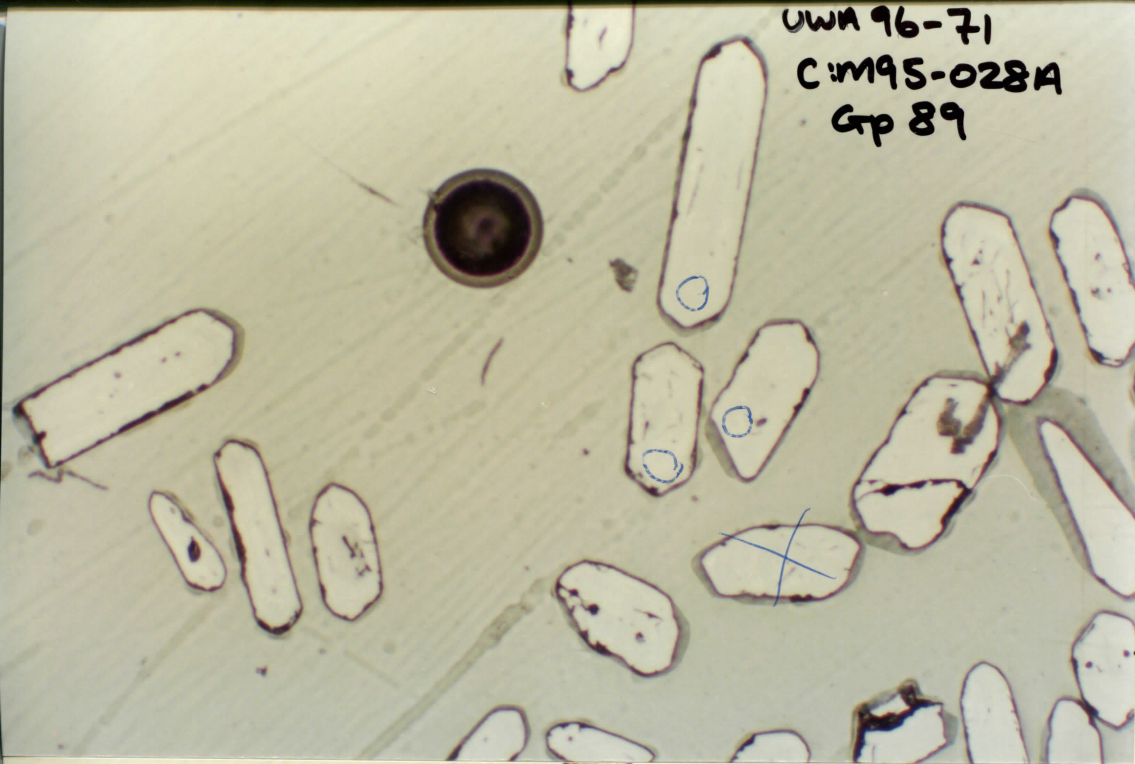
UWA 96-71
C: M95-02814
Ctp 87



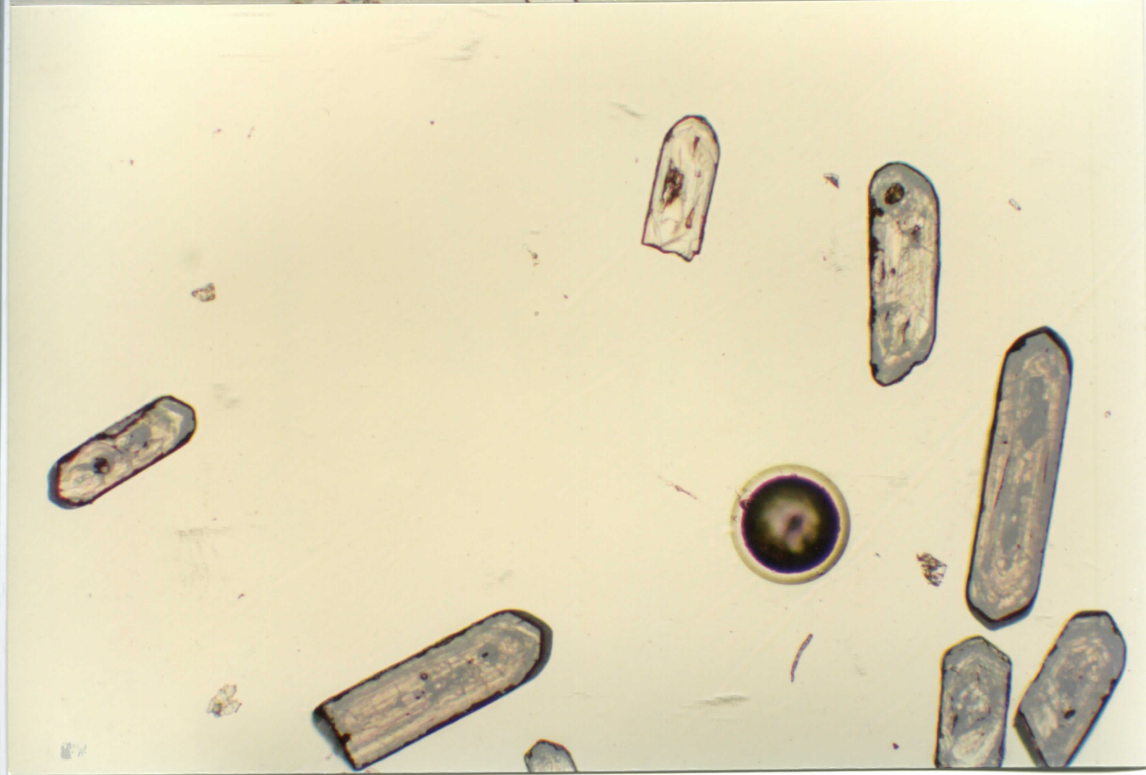
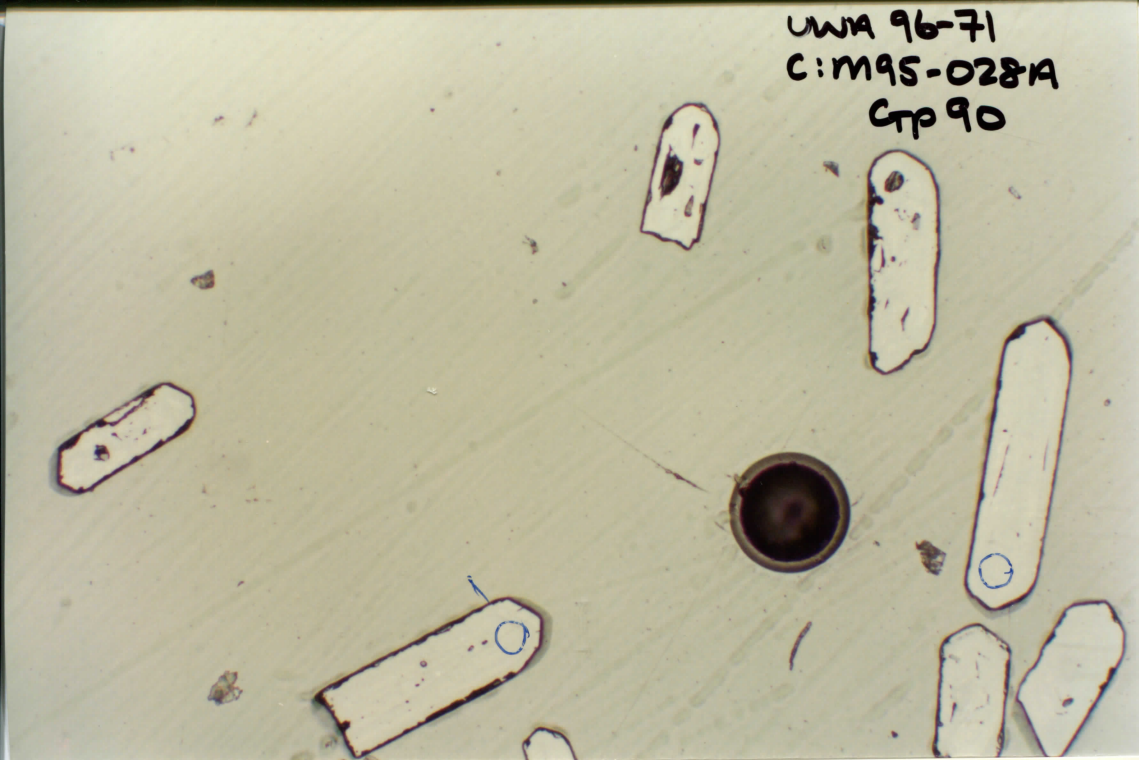
UWA 96-71
CIM95-028A
Gp 88



UWA 96-71
C:M95-028A
Gp 89

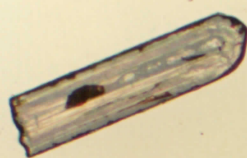
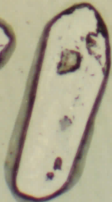


UWA 96-71
C: M95-028A
CTP 90

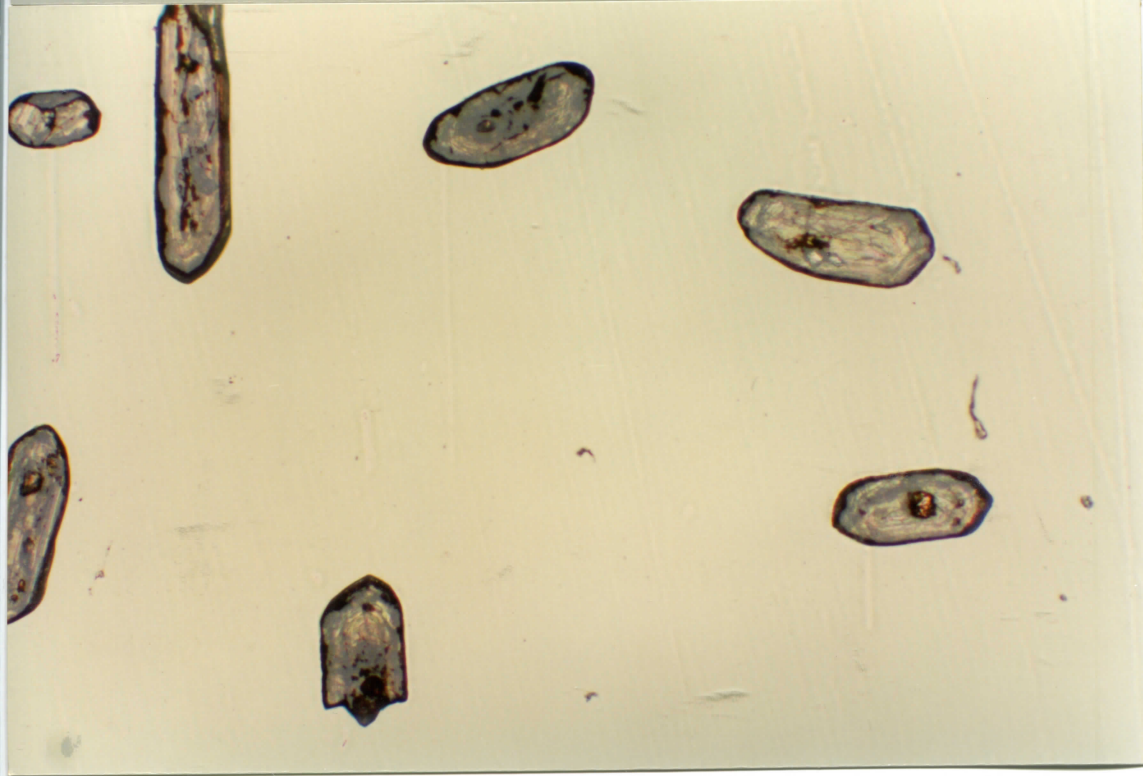
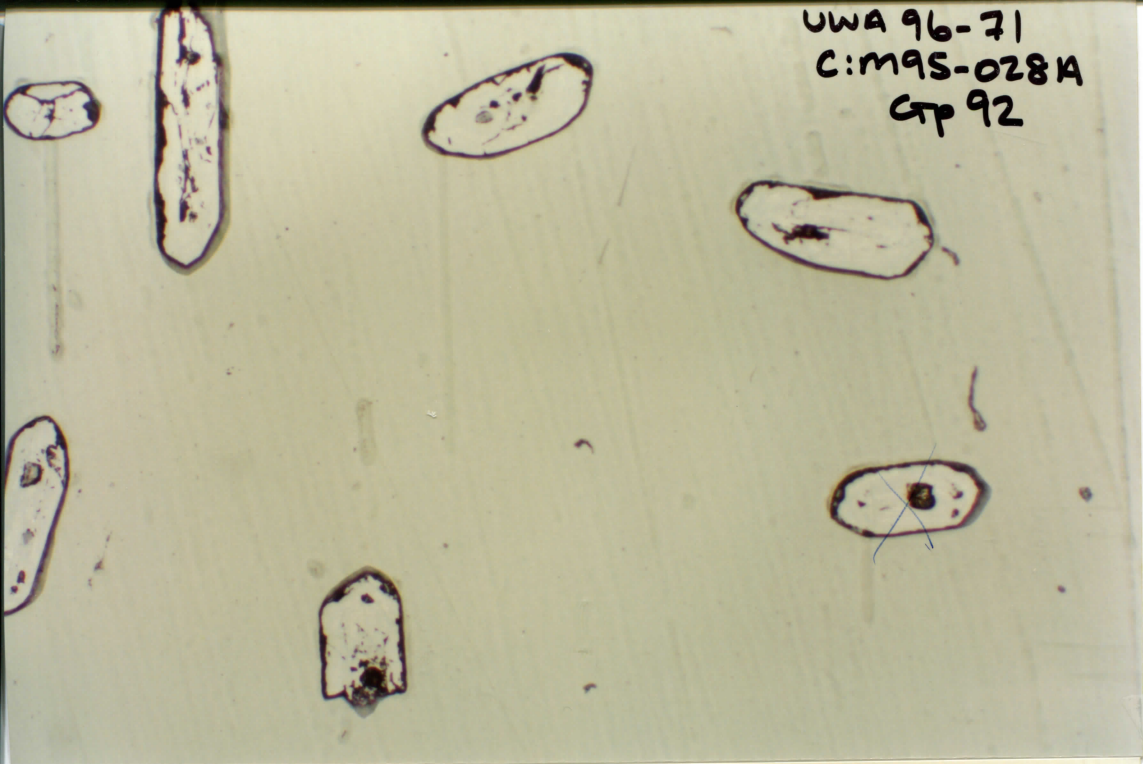


UWA 96-71
C: M95-028A
GTP 91

OK



UWA 96-71
C:MAS-028A
CTP 92



UWA 96-71
C:MAS-028A
Gp 93

