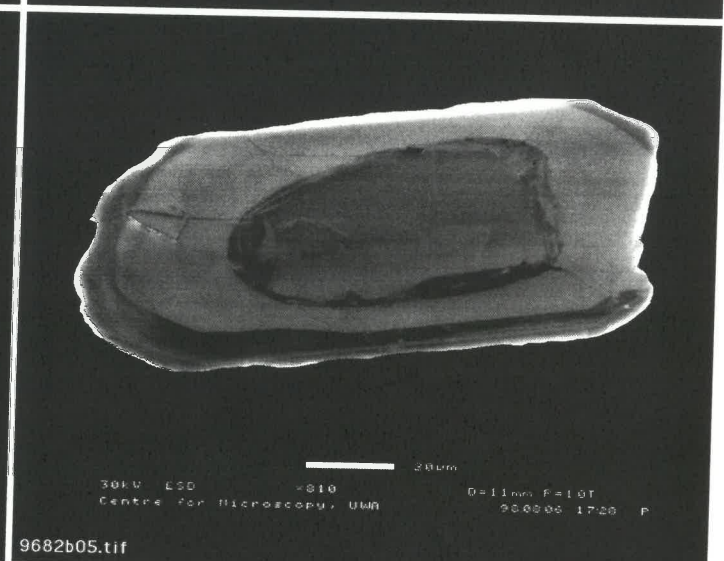
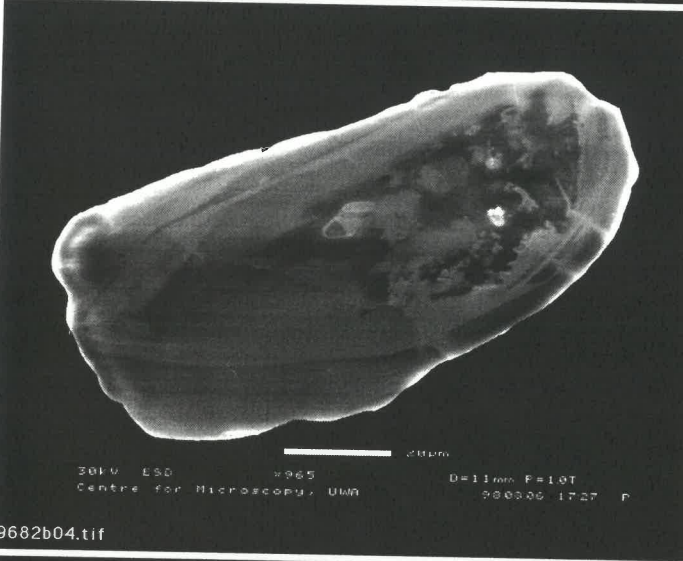
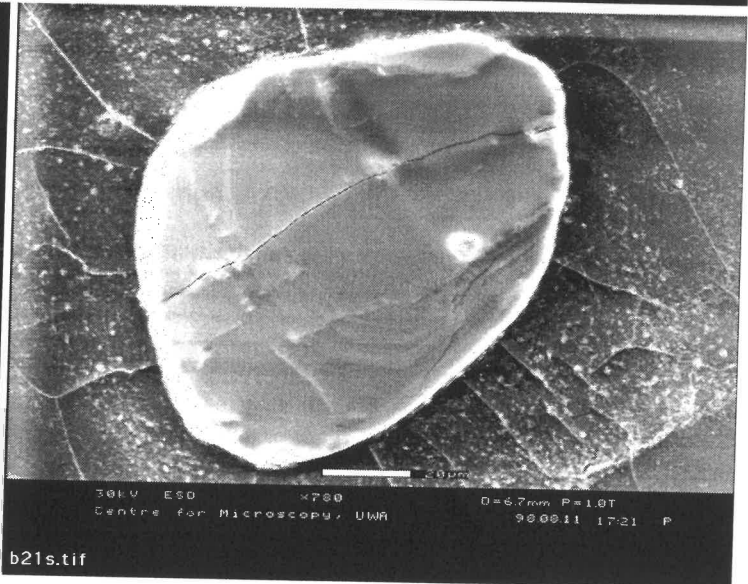
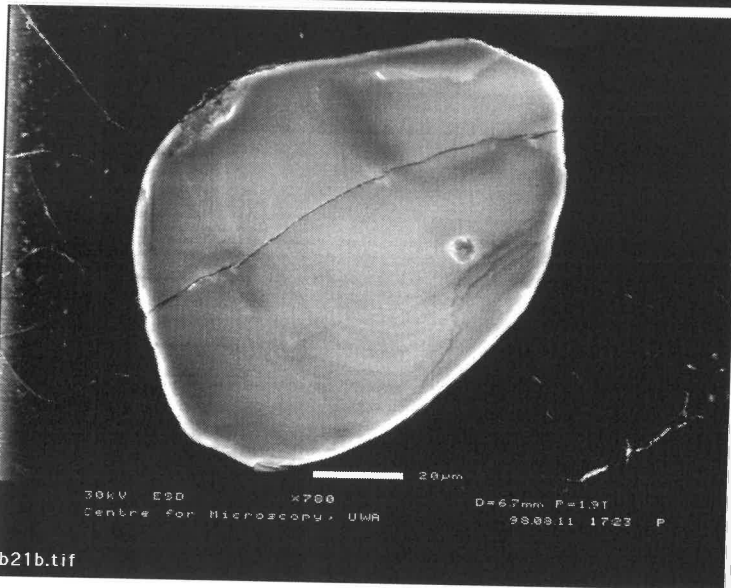
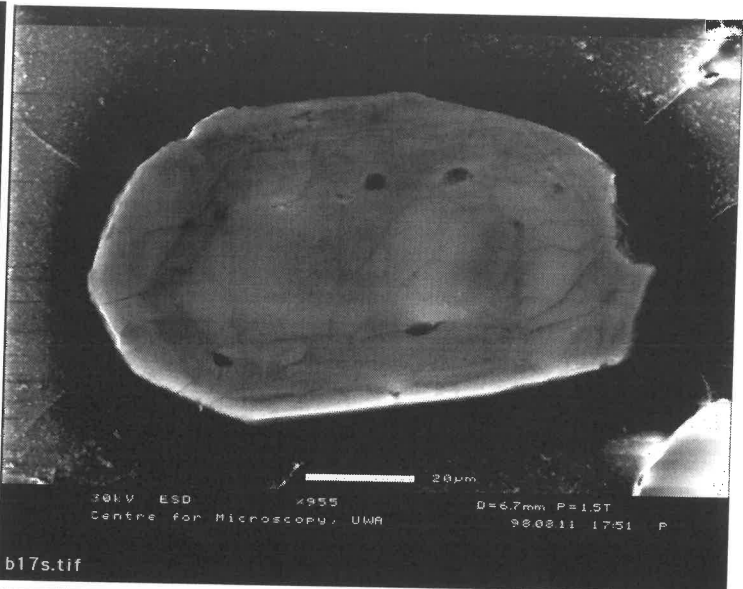
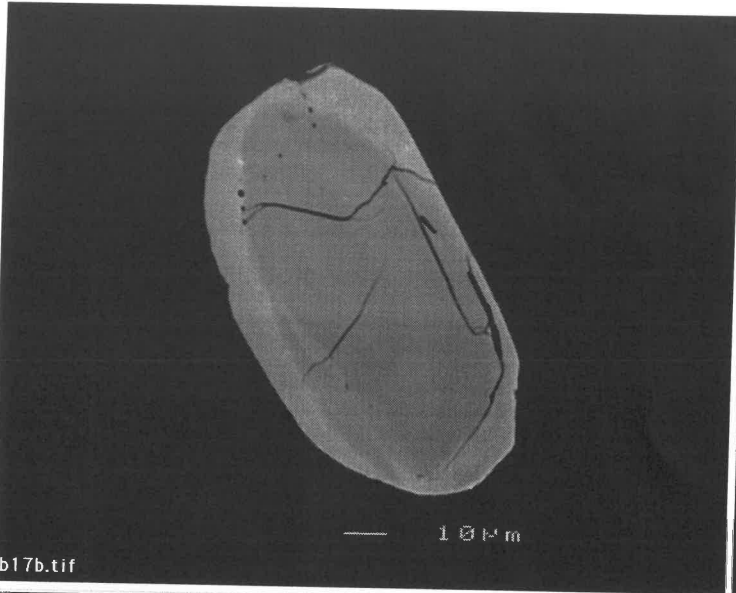
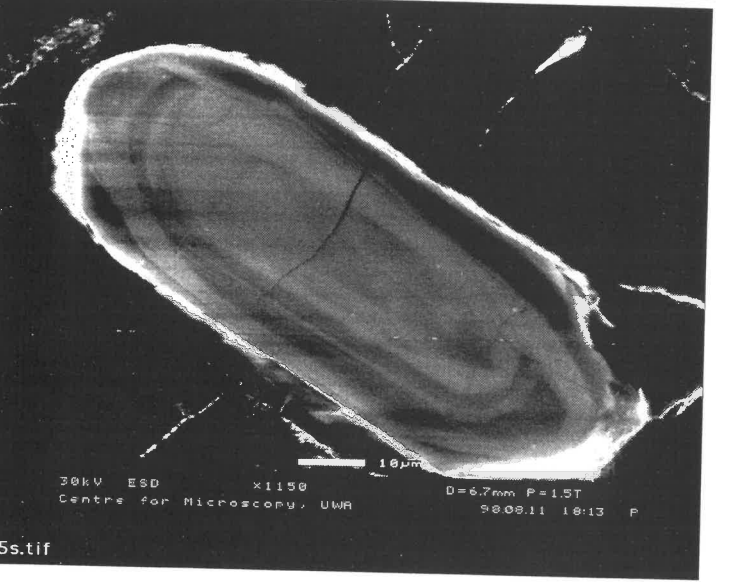
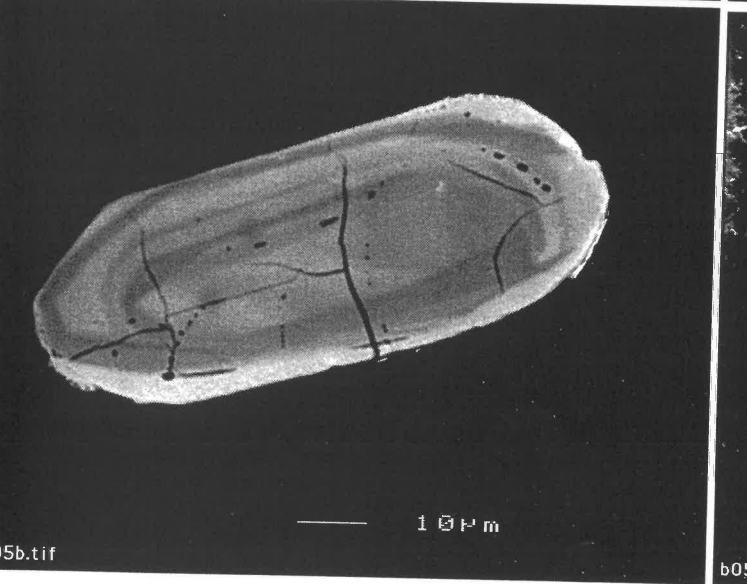
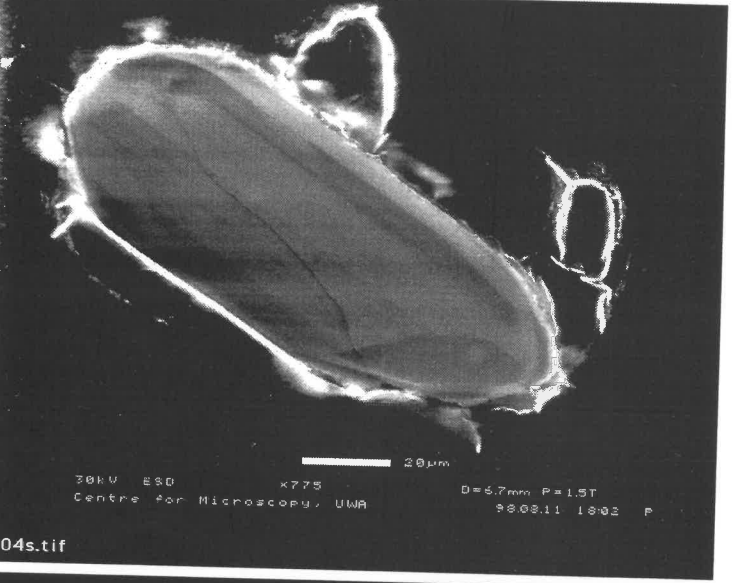
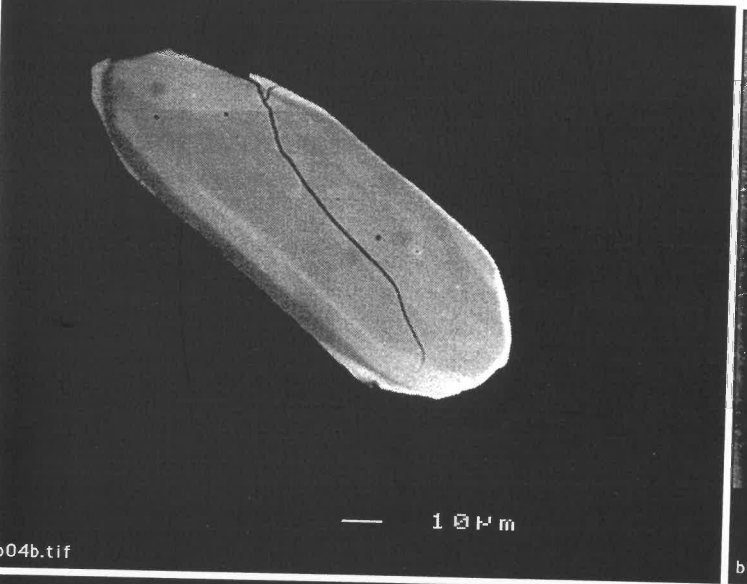
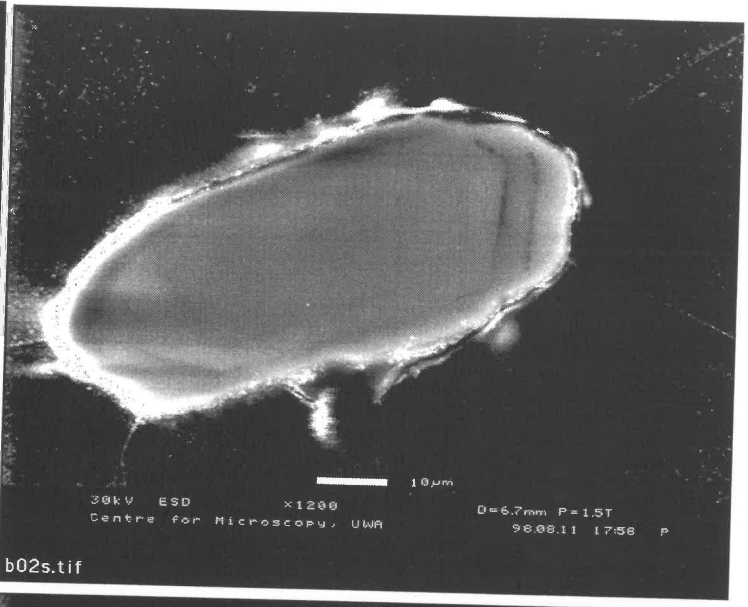
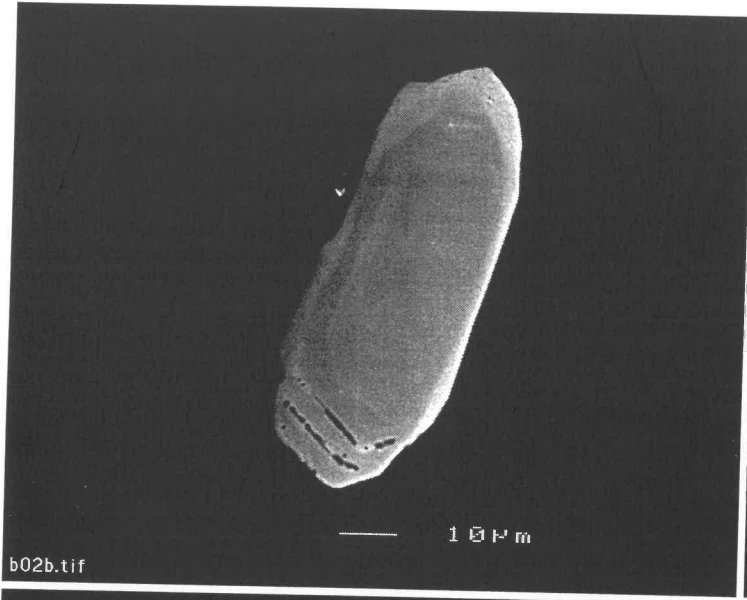
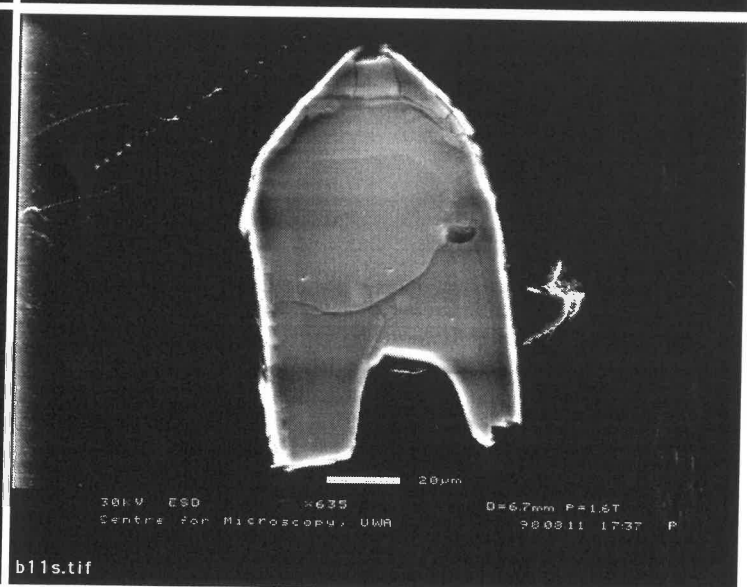
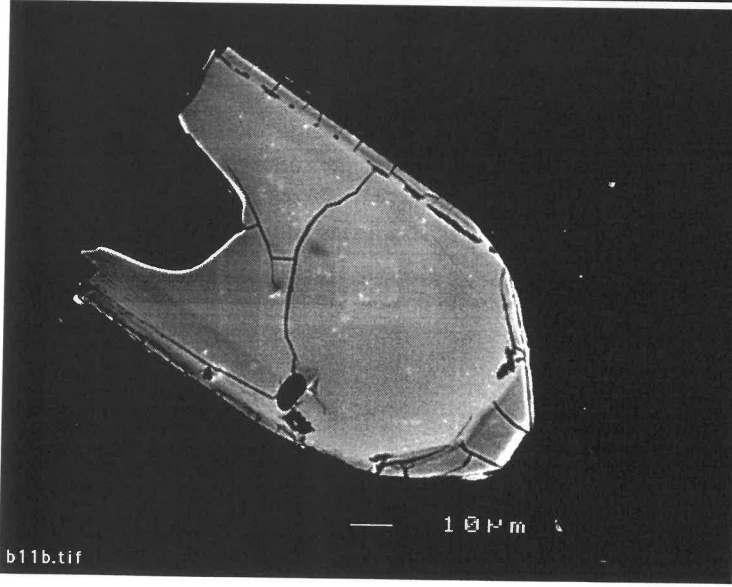
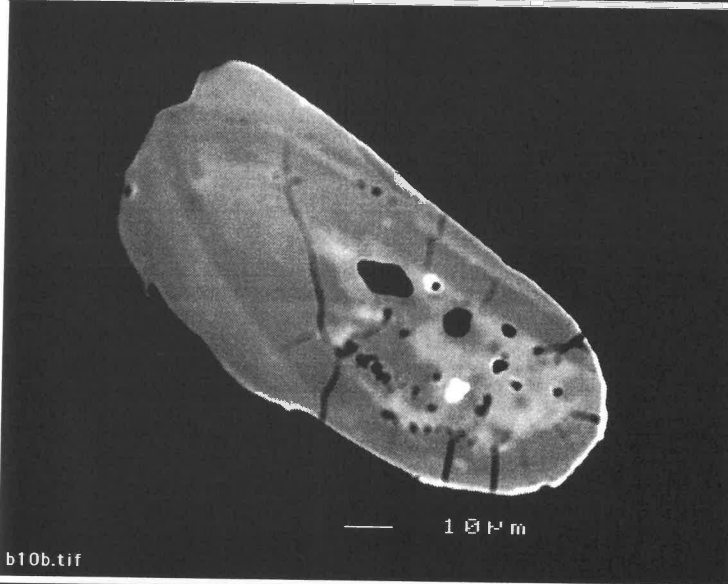
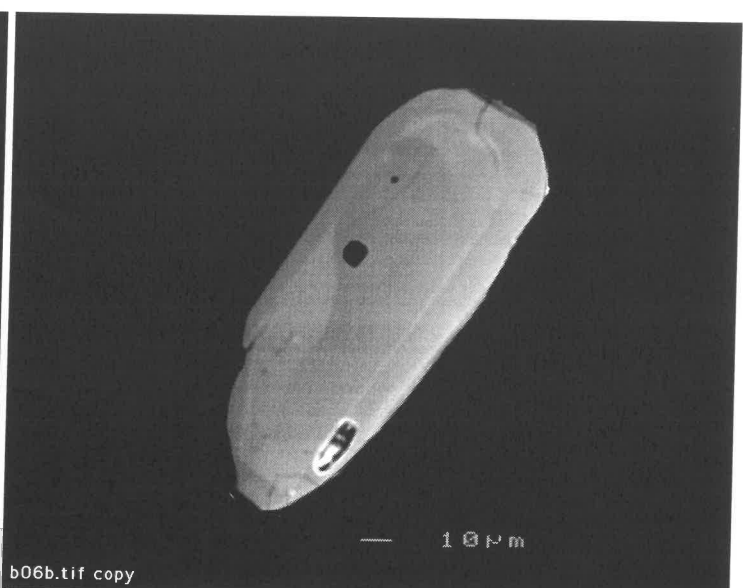
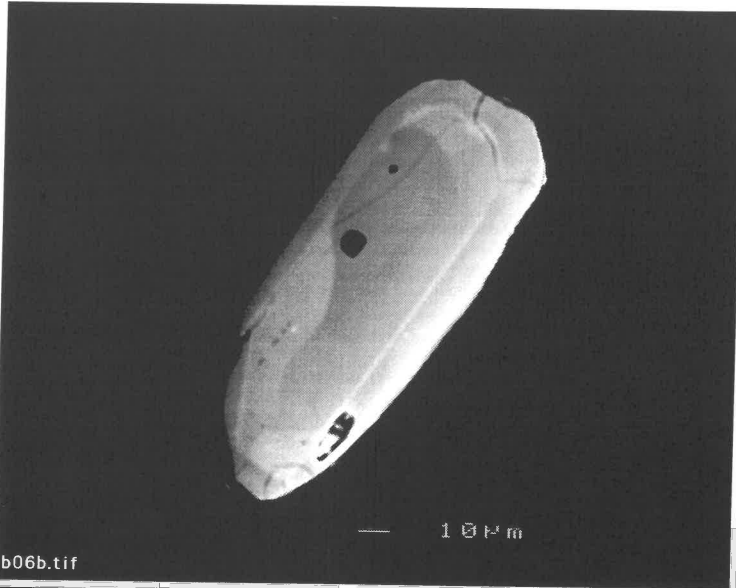


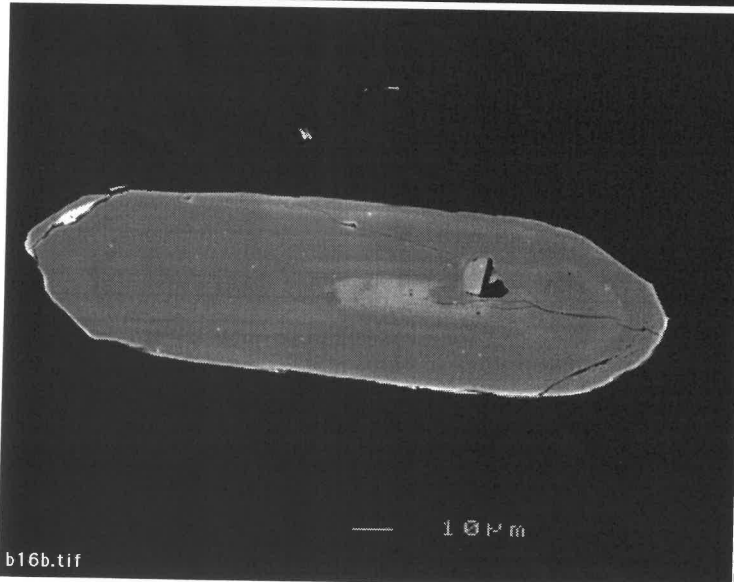
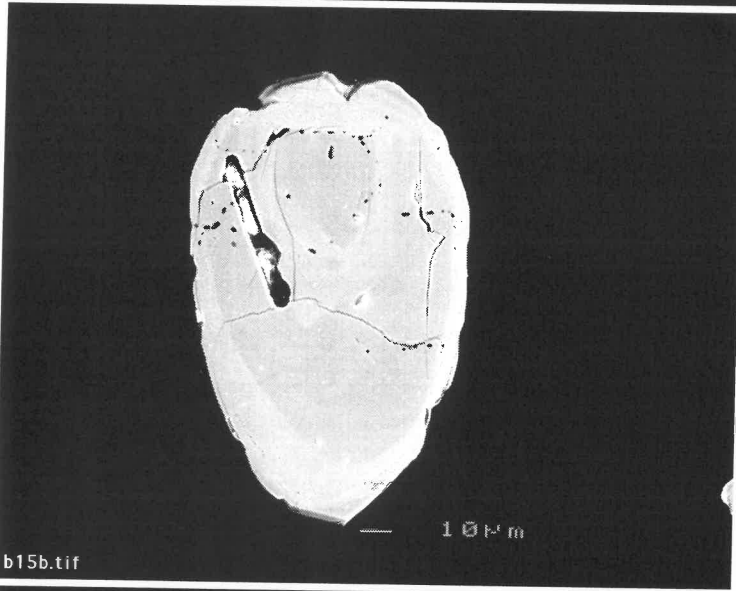
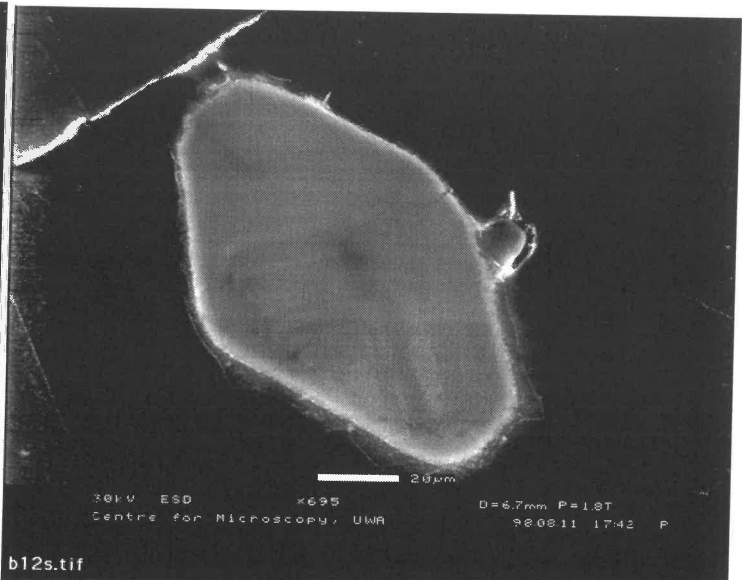
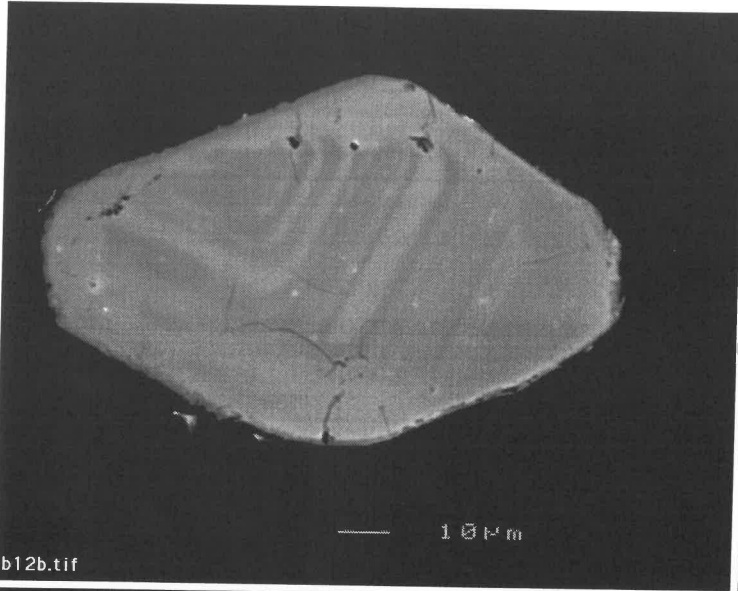
10



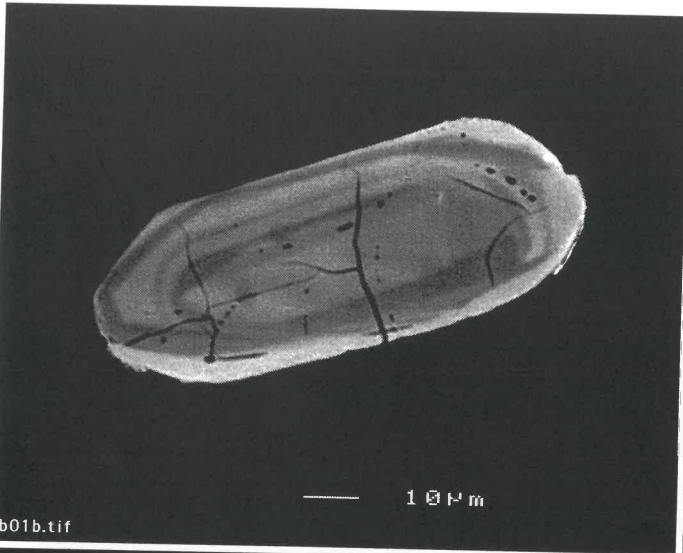




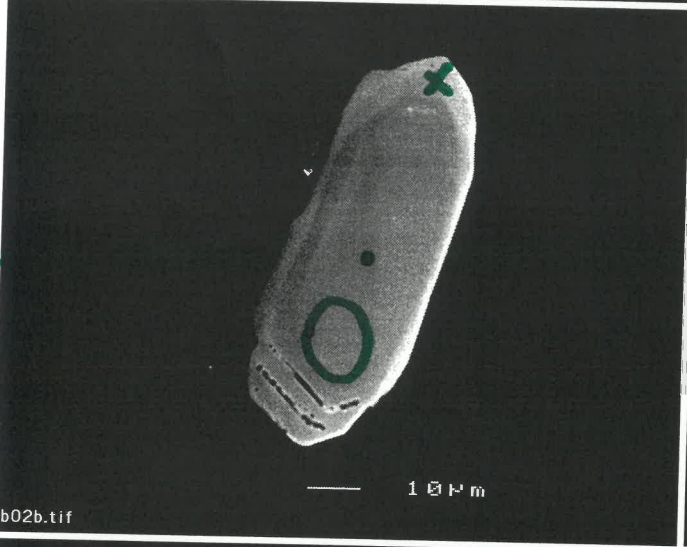




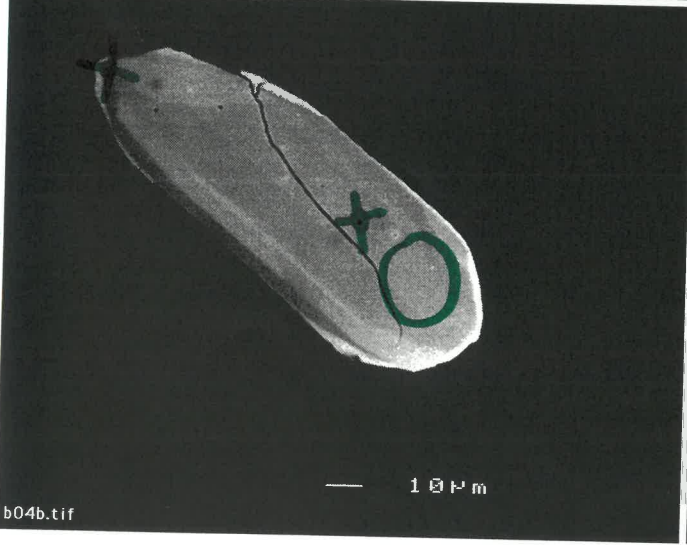
43.



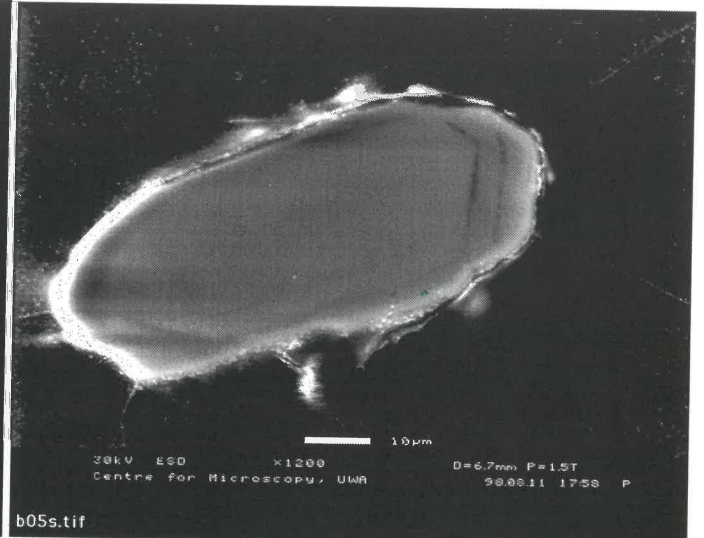
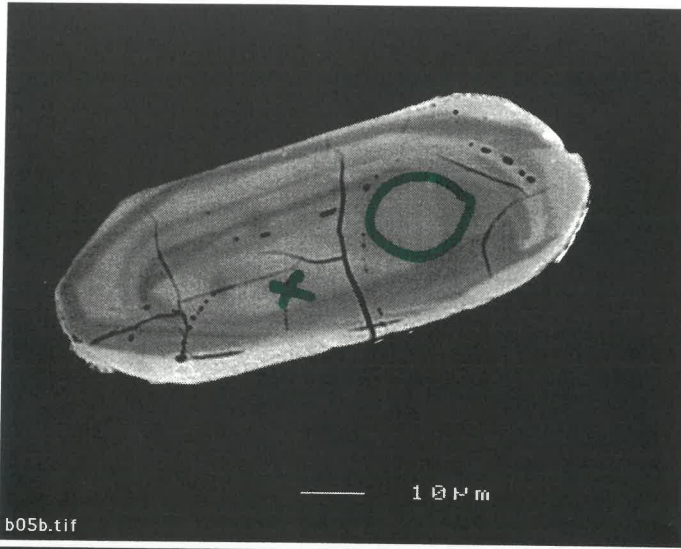
2124



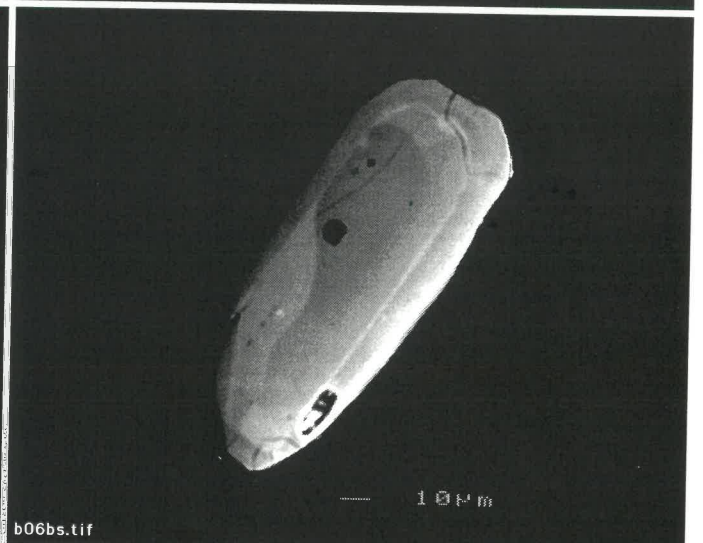
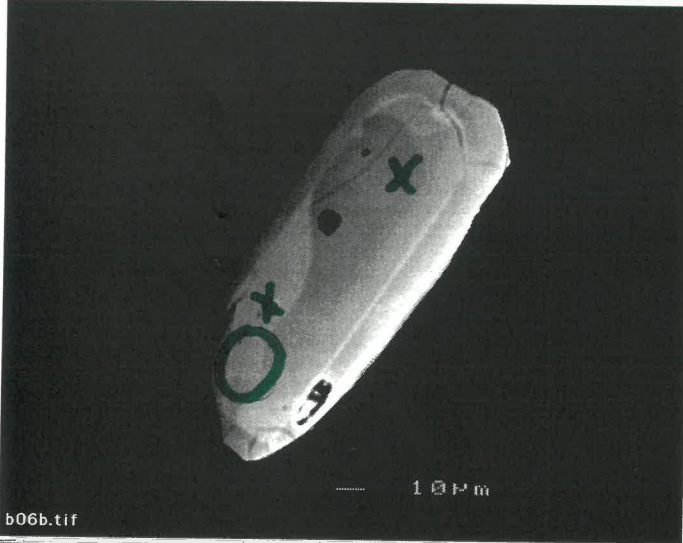
2179



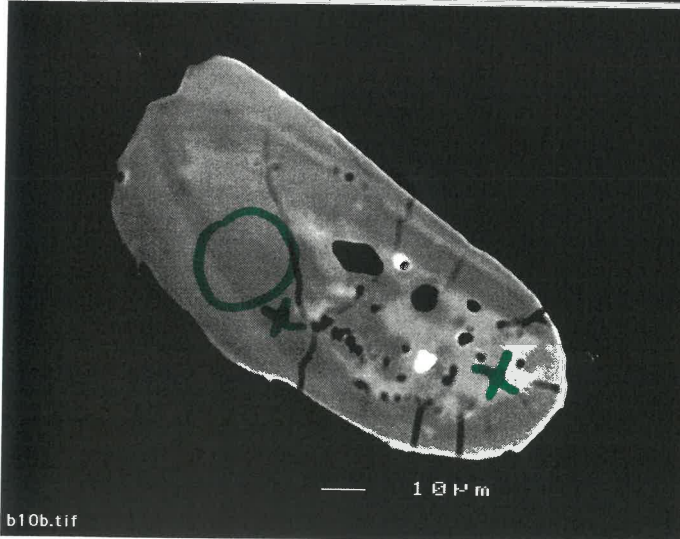
2362



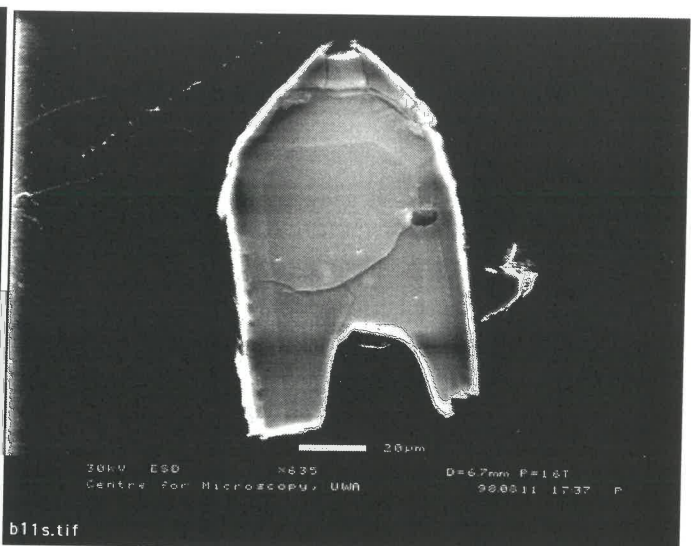
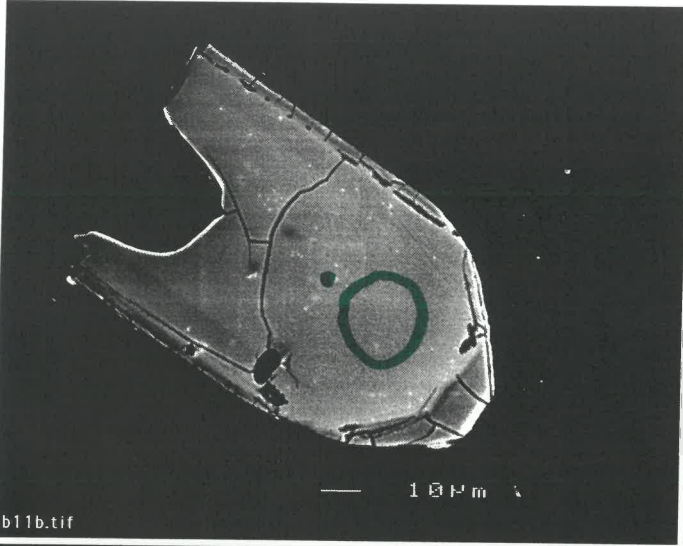
1581



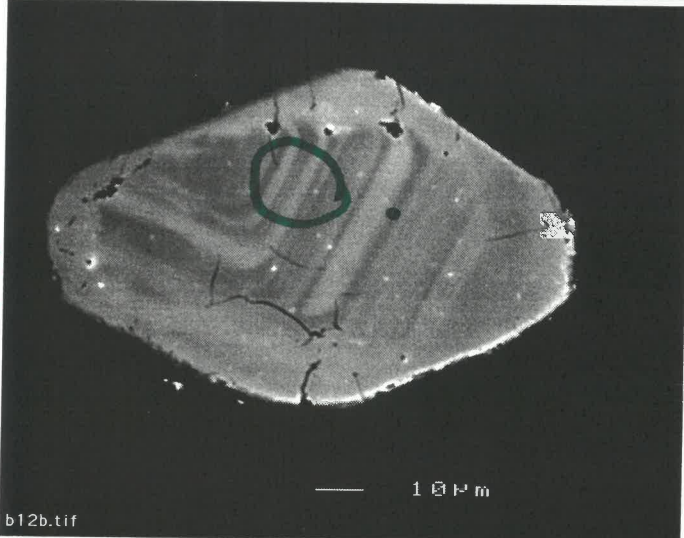
2091



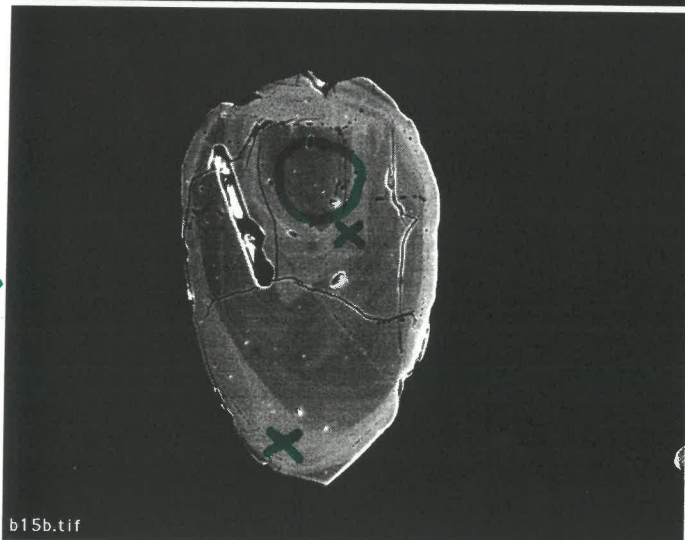
1105



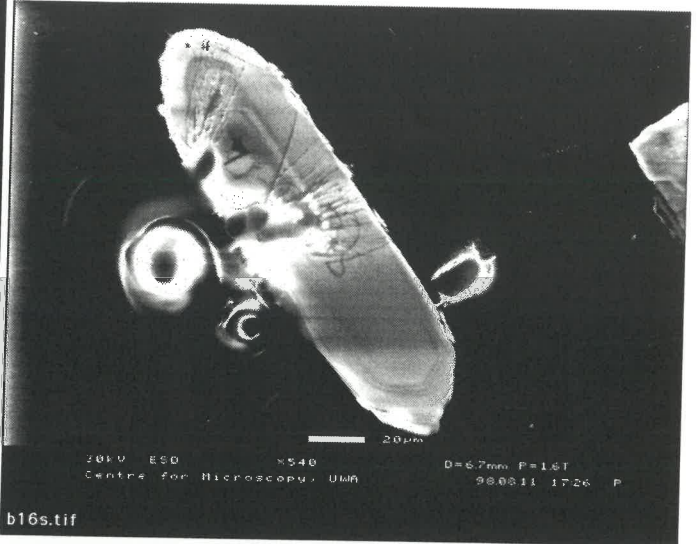
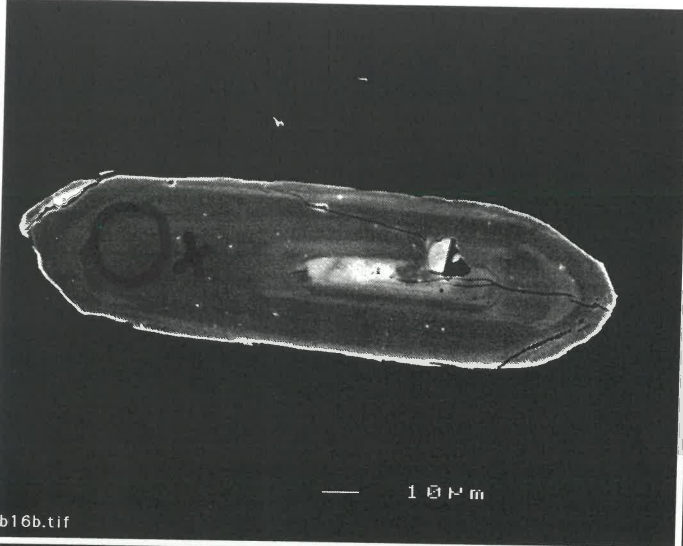
1491



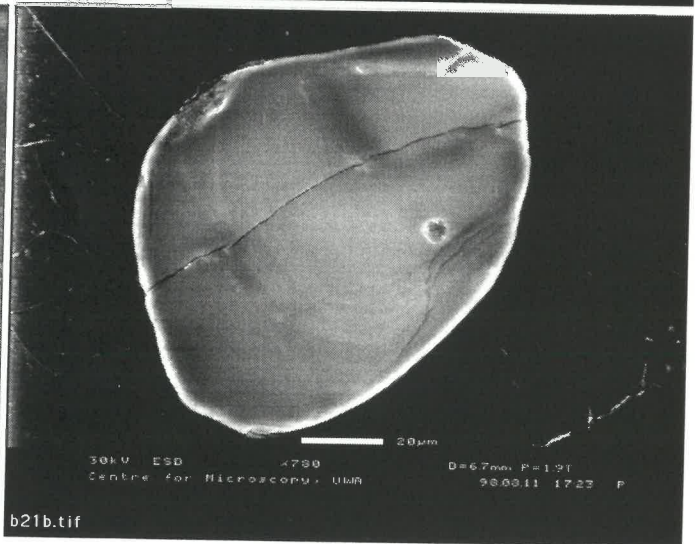
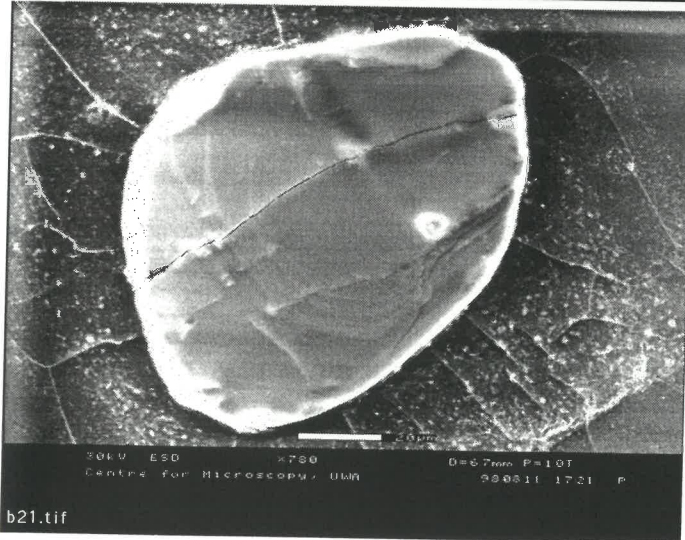
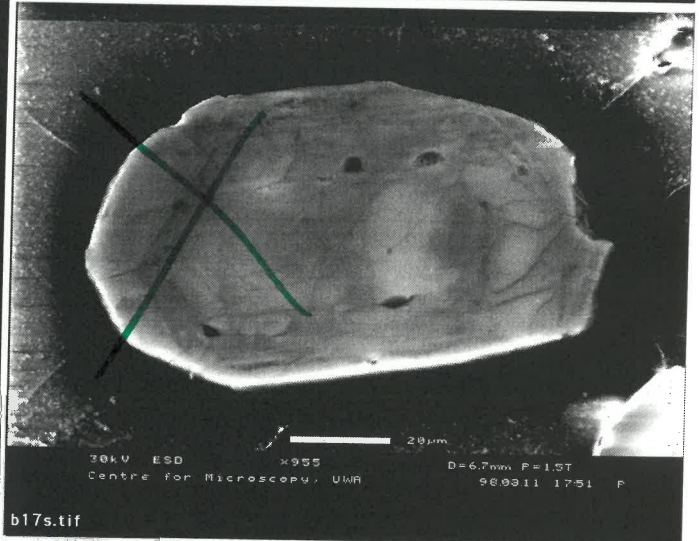
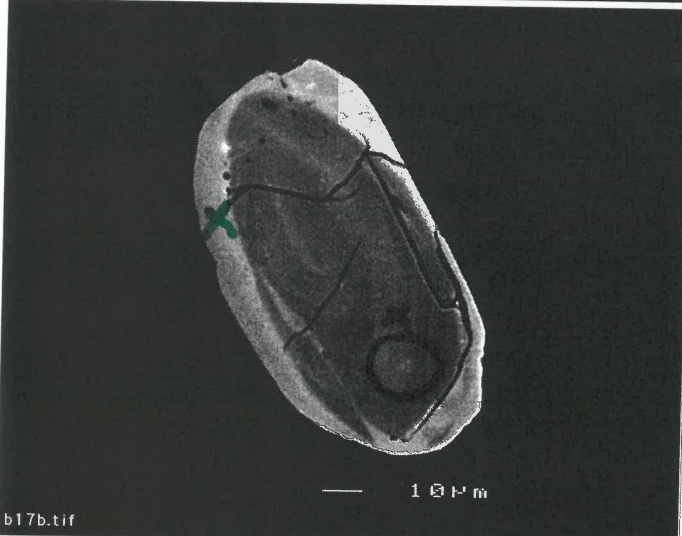
2140

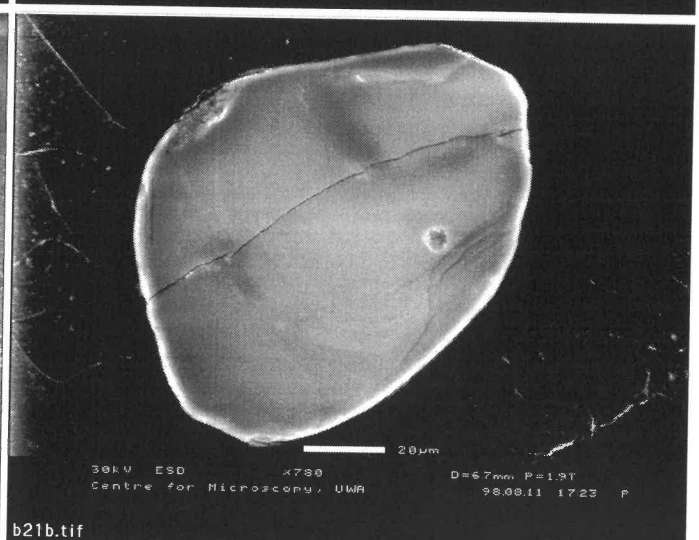
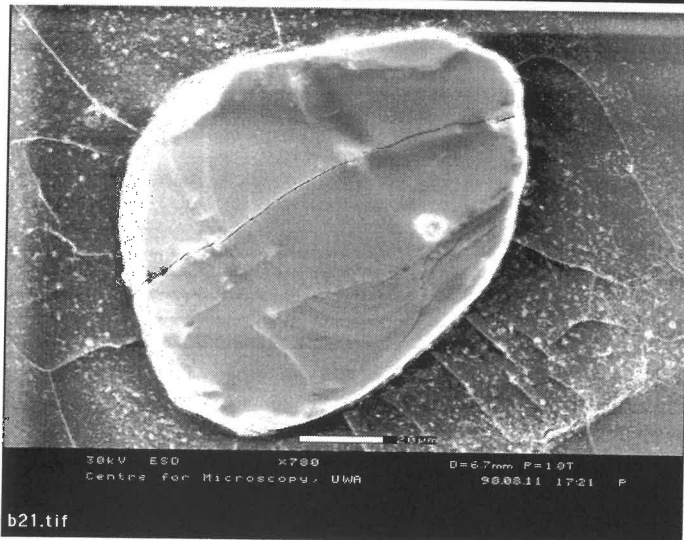
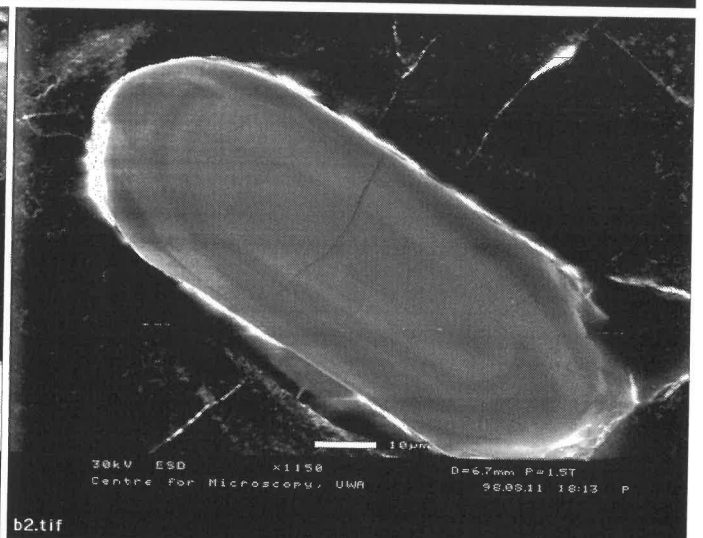
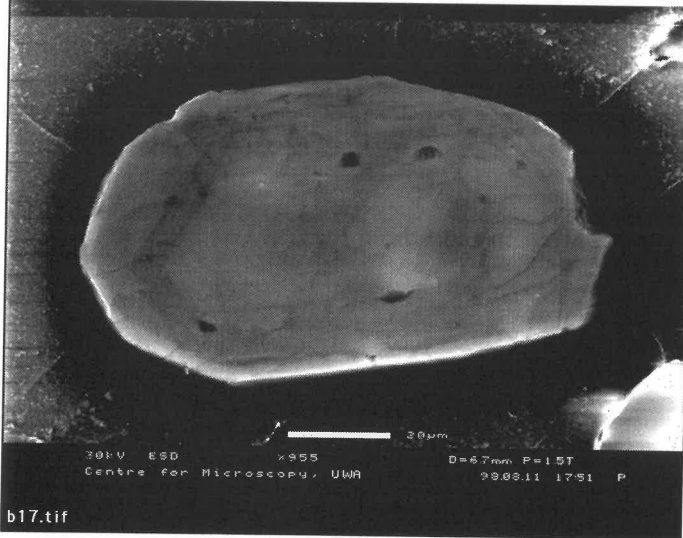
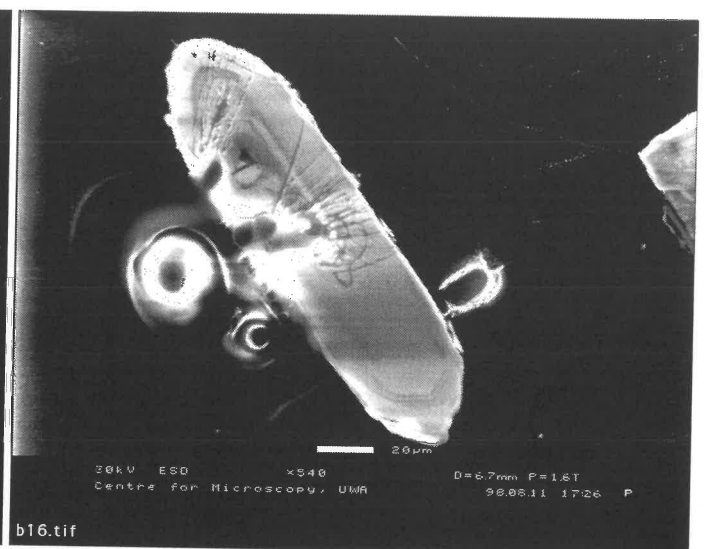
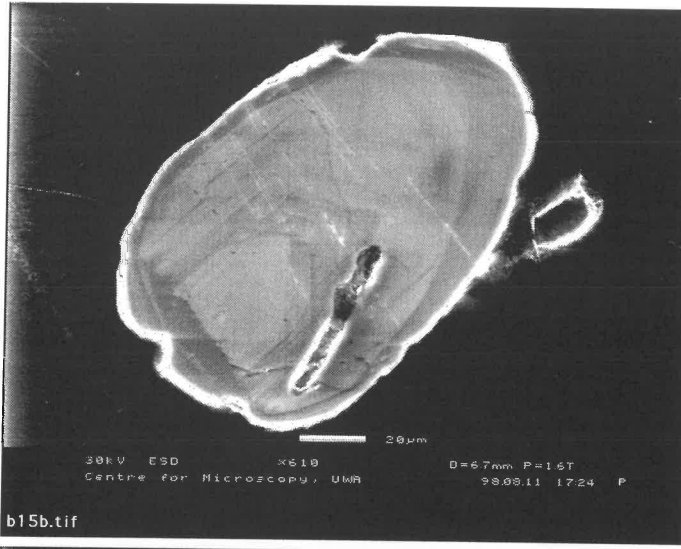


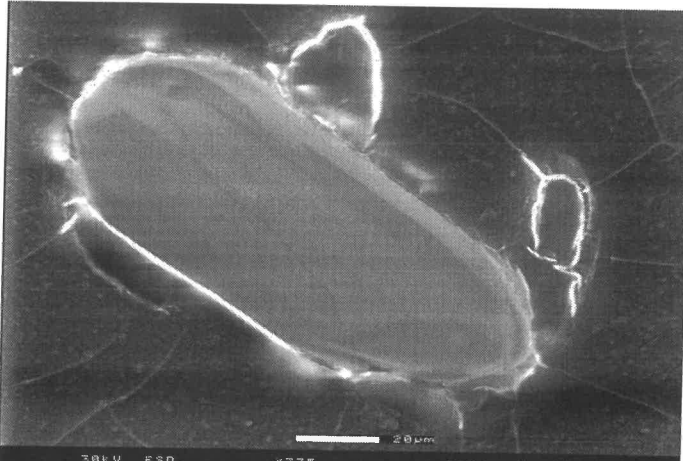
2261



2292

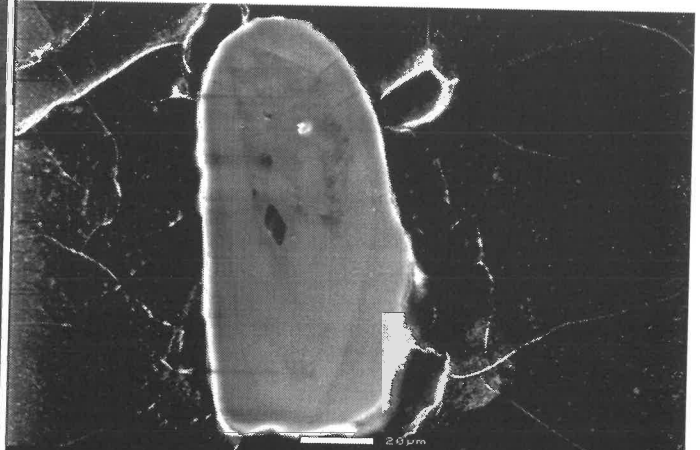






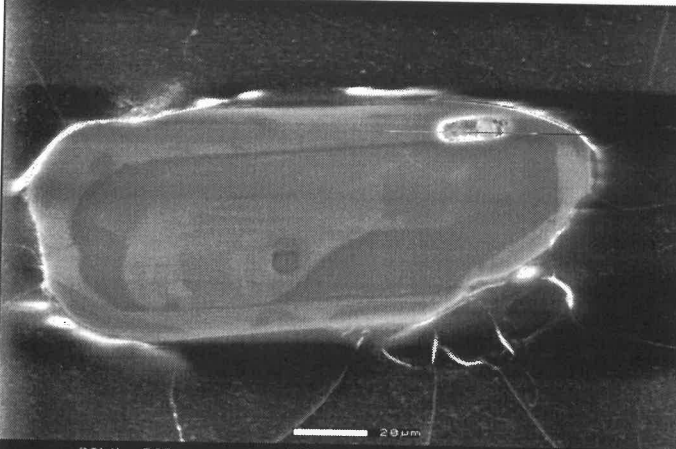
30kV ESD x775 D=6.7mm P=1.5T
Centre for Microscopy, UWA 98.08.11 18:02 P

b1.tif



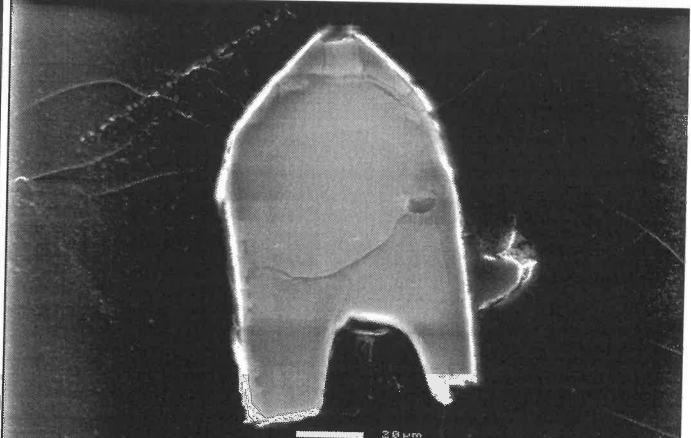
30kV ESD x685 D=6.7mm P=1.5T
Centre for Microscopy, UWA 98.08.11 17:48 P

b10.tif



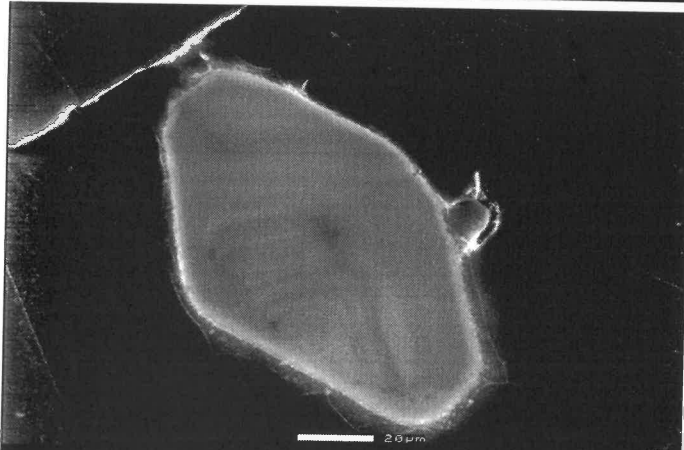
30kV ESD x685 D=6.7mm P=1.5T
Centre for Microscopy, UWA 98.08.11 19:10 P

b10b.tif



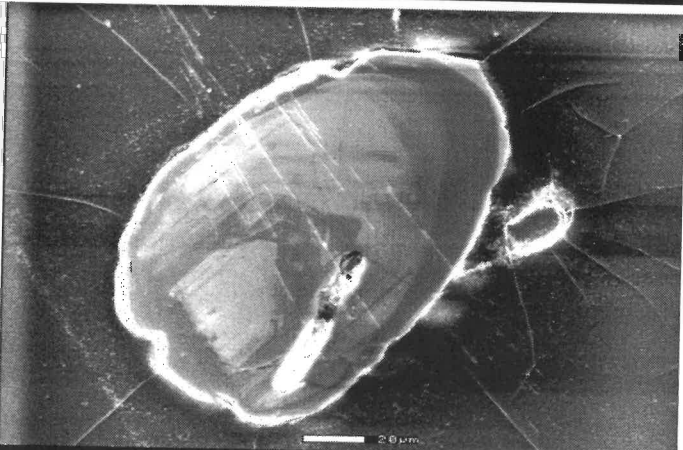
30kV ESD x635 D=6.7mm P=1.6T
Centre for Microscopy, UWA 98.08.11 17:37 P

b11.tif



30kV ESD x695 D=6.7mm P=1.6T
Centre for Microscopy, UWA 98.08.11 17:42 P

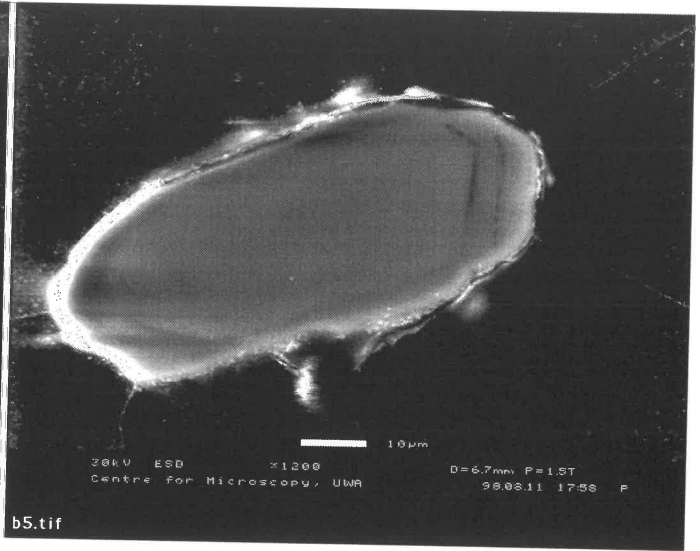
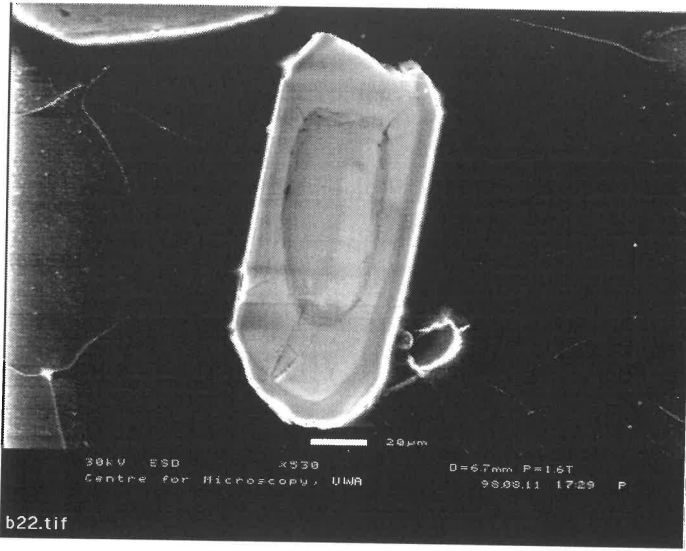
b12.tif



30kV ESD x575 D=6.7mm P=1.9T
Centre for Microscopy, UWA 98.08.11 17:19 P

b15.tif

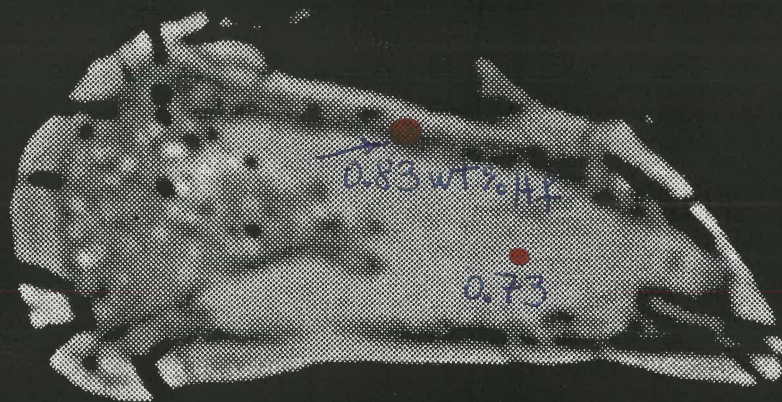
9882 - ANFIBOLITO RAZZERA (3) 12. 8.98



BSE at UFRES/ME 21/5/98

8-APR-1998 Z1A

No 18



These two ^{zircon} crystals were found with SEM in thin sections of Razzera amphibolite. They are 50 μm -large. The low Hf contents show they are magmatic basaltic. They are not xenocrysts. Therefore the age of the amphibolite is 2.1 Ga = magma. It must have been a diachase, otherwise the crystals ~~would~~ would not attain 100 μm (in a lang).

size of crystals dated by Marcus.

8-APR-1998 Z2B

No 19



r20.00µ BSE

15.0kV

2000