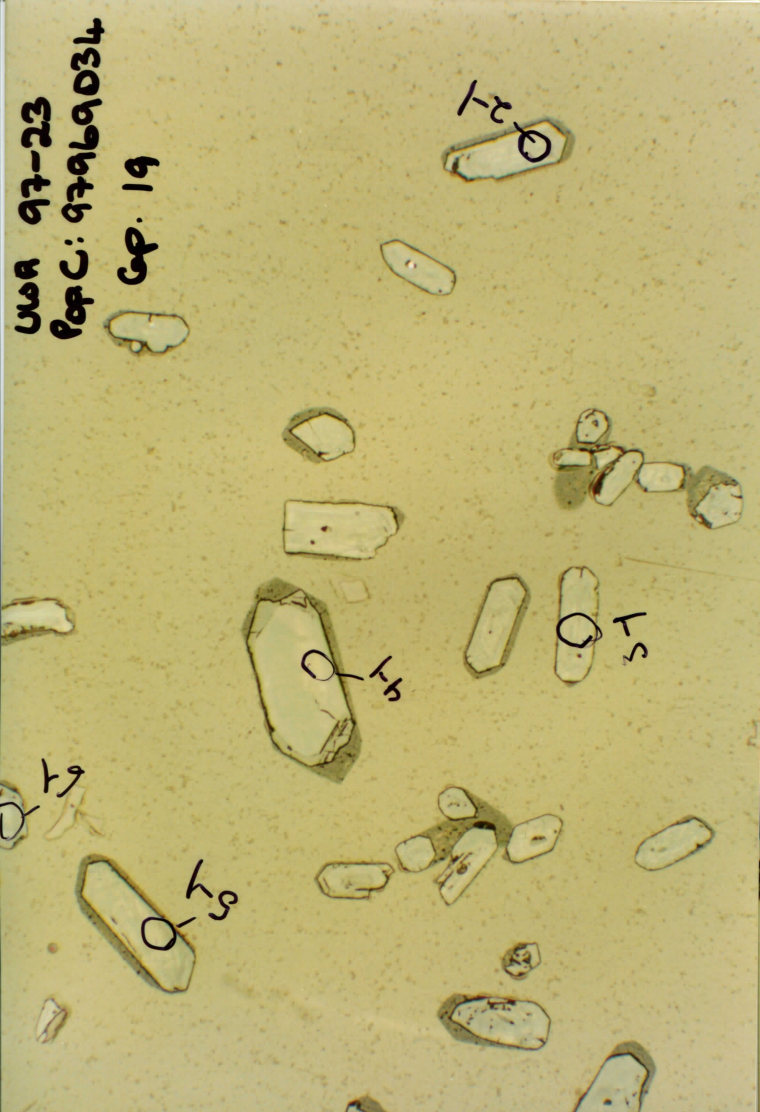
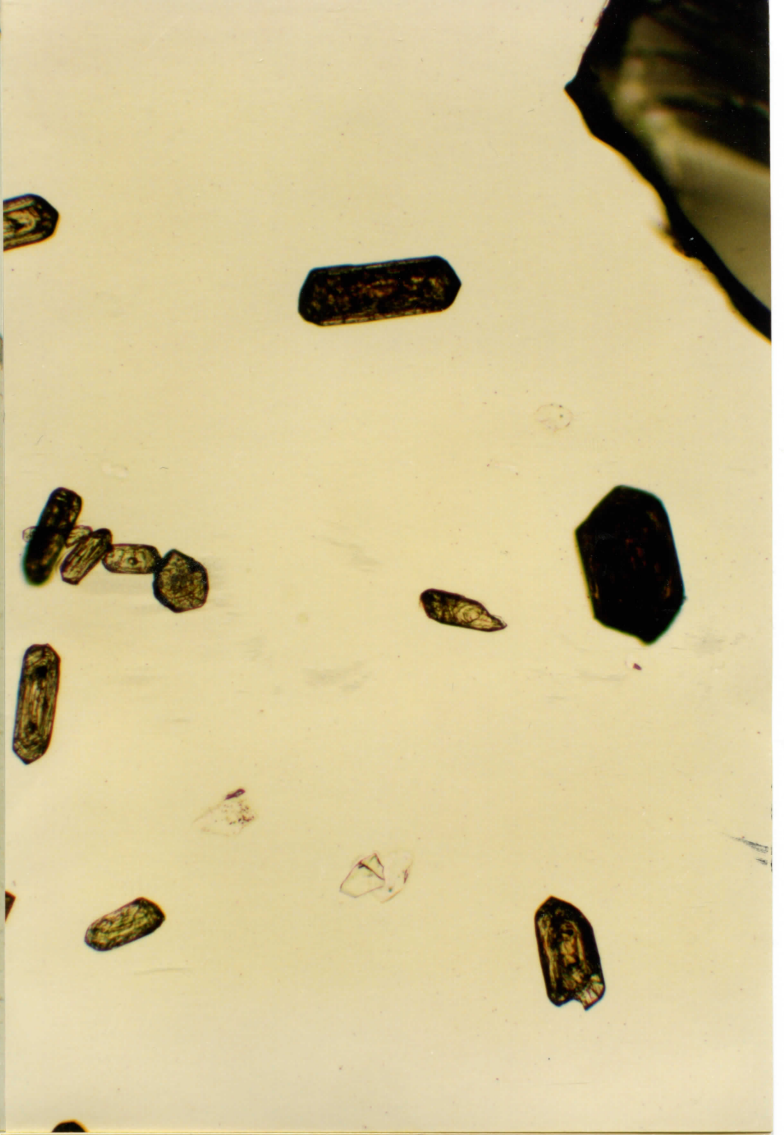
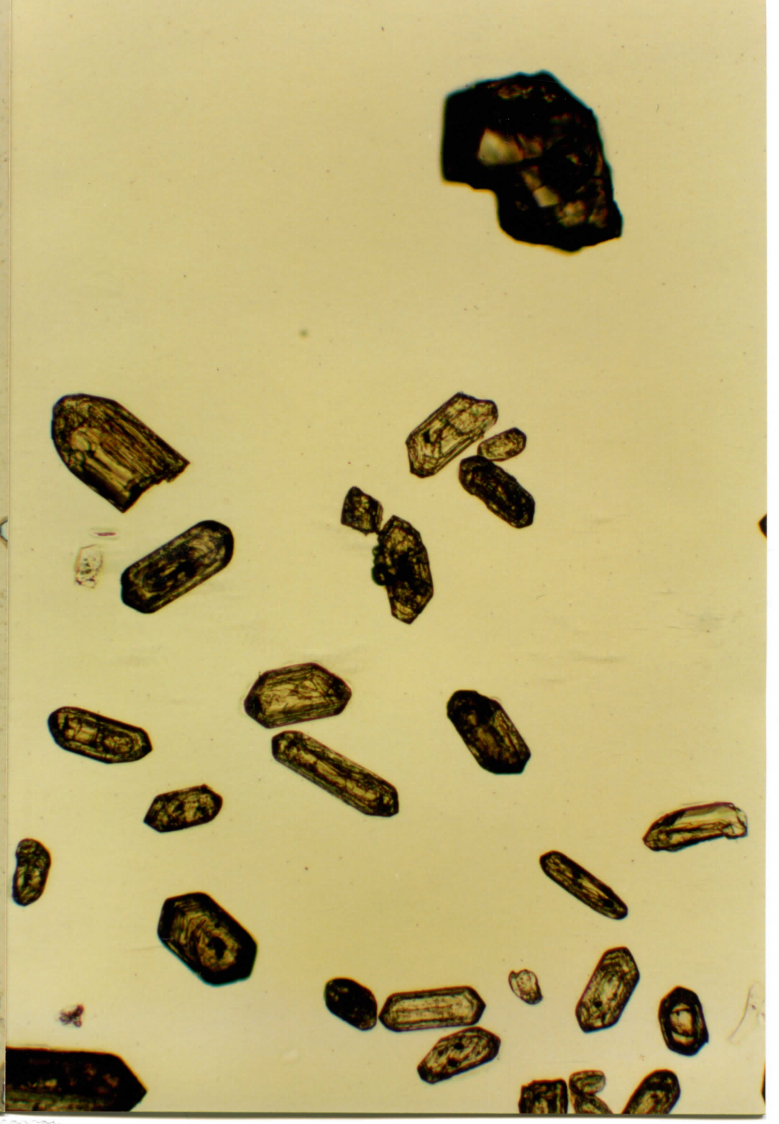


USA 97-23  
Pop. C: 97969034  
GP. 18

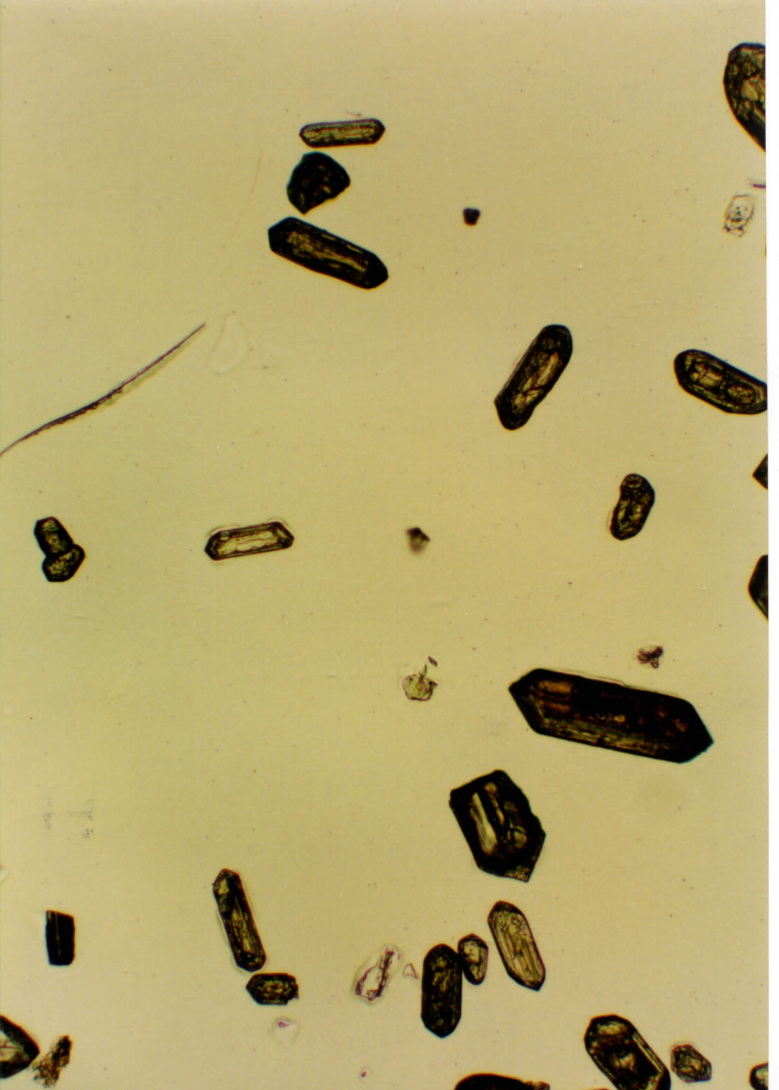




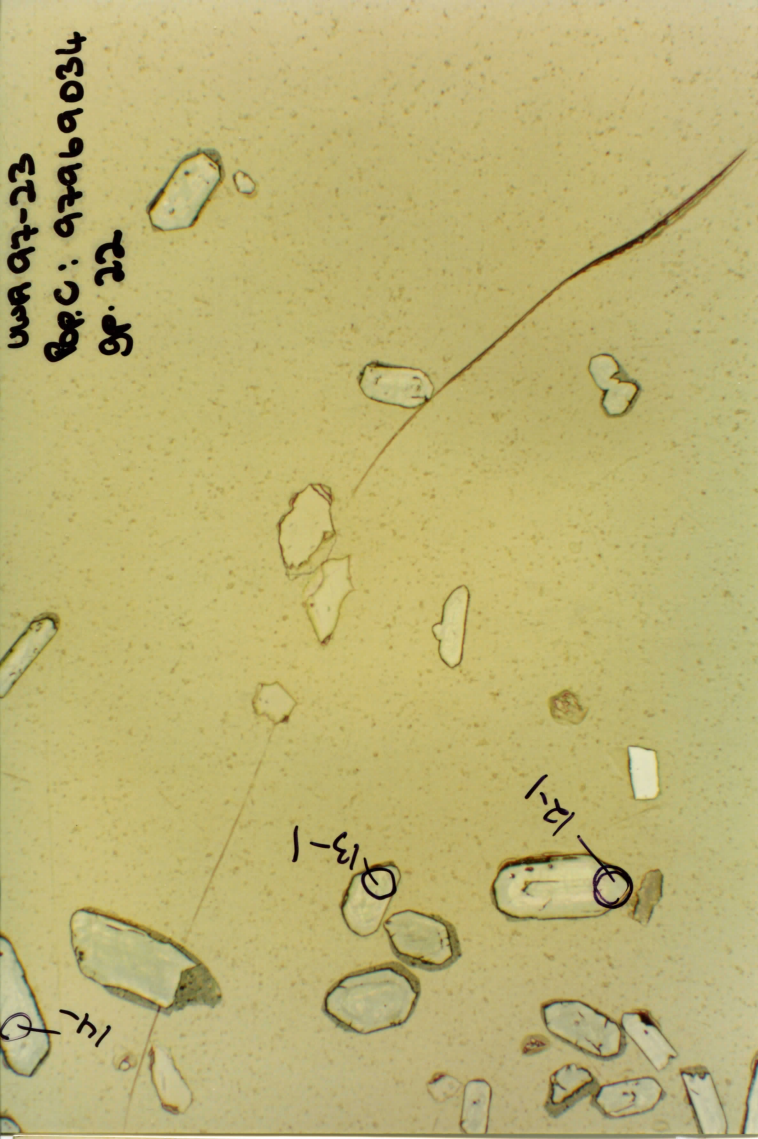
USA 97-23  
Pop C: 97969034  
SP. 20



USA 97-23  
Pop C: 97969034  
SP. 21







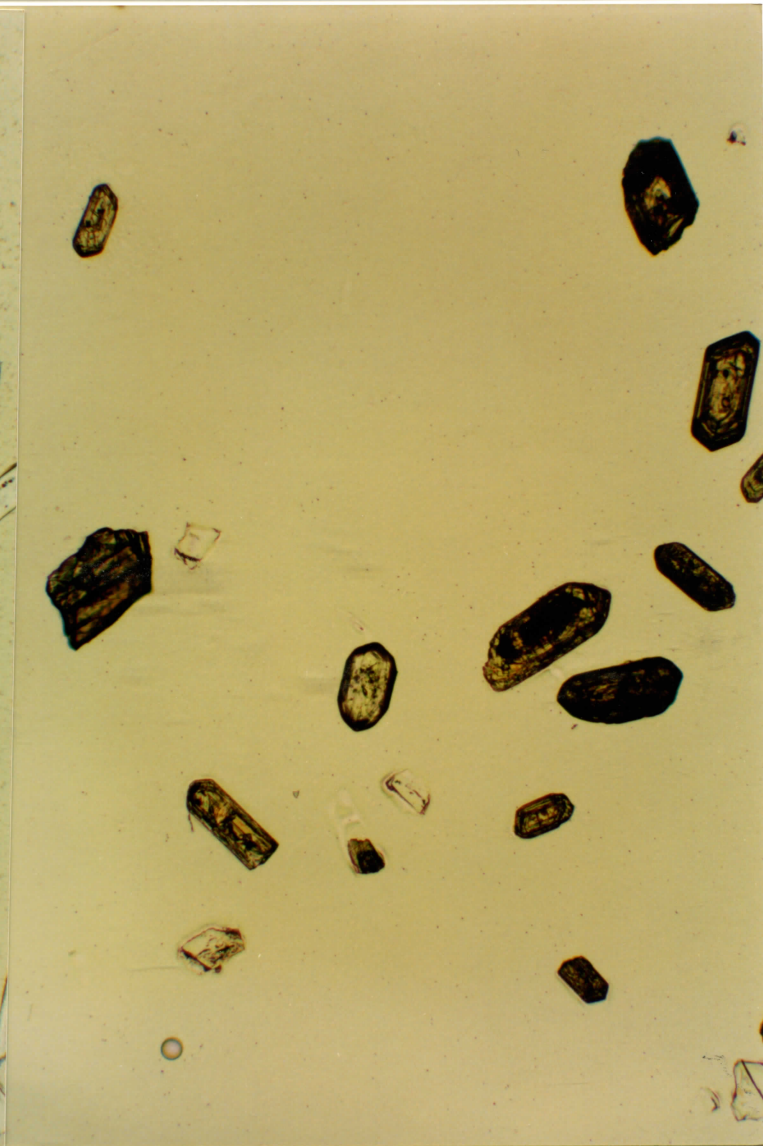


USA 97-23

Pop.C: 97969034

GP. 24

25-1



USA 97-23

Pop.C: 97969034

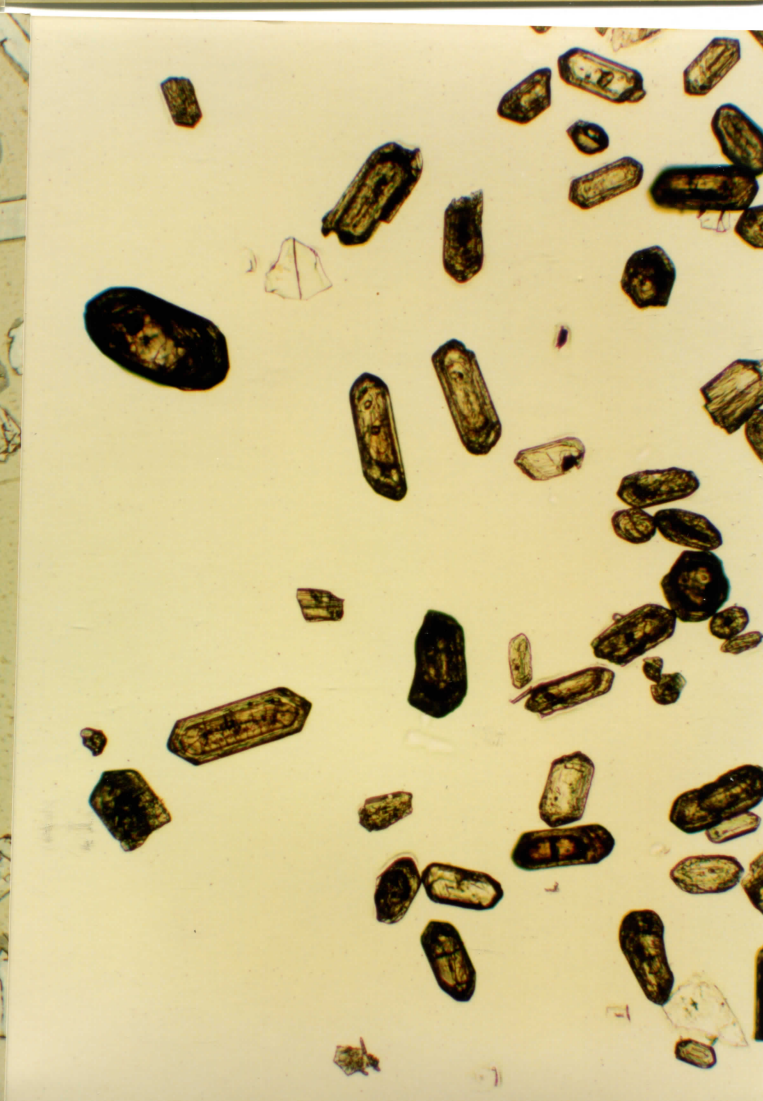
GP. 25

196-1

TU grain  
abundant



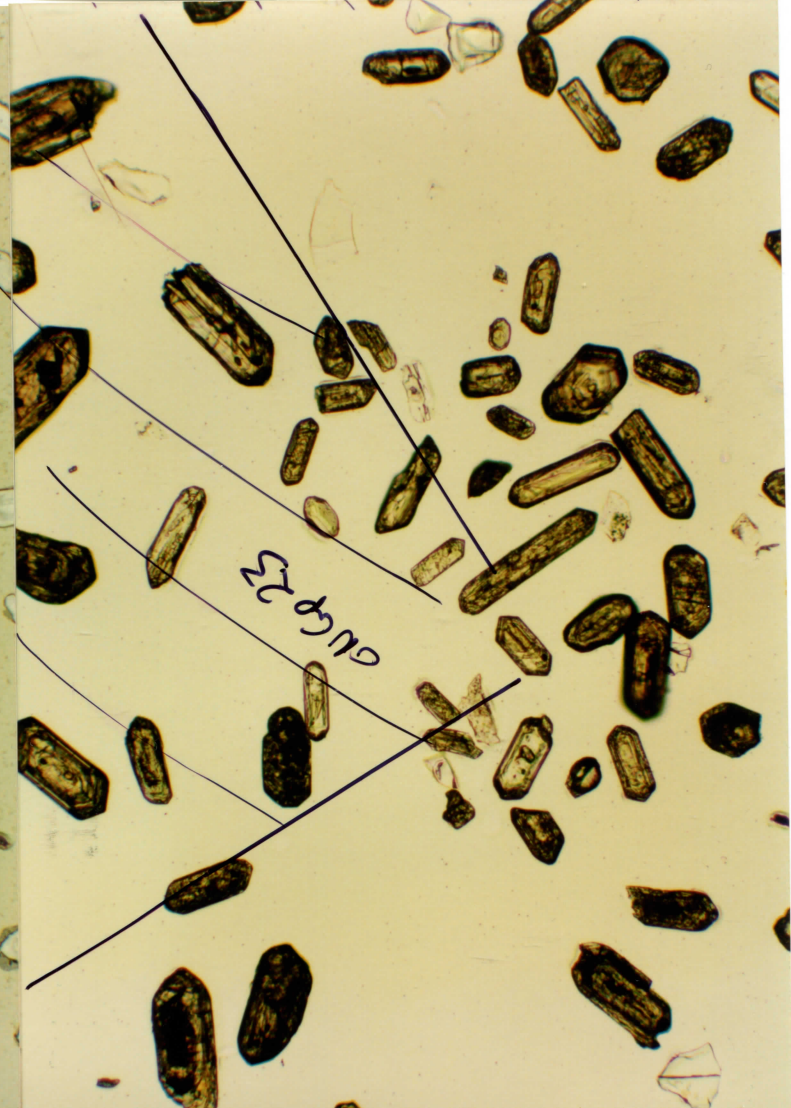
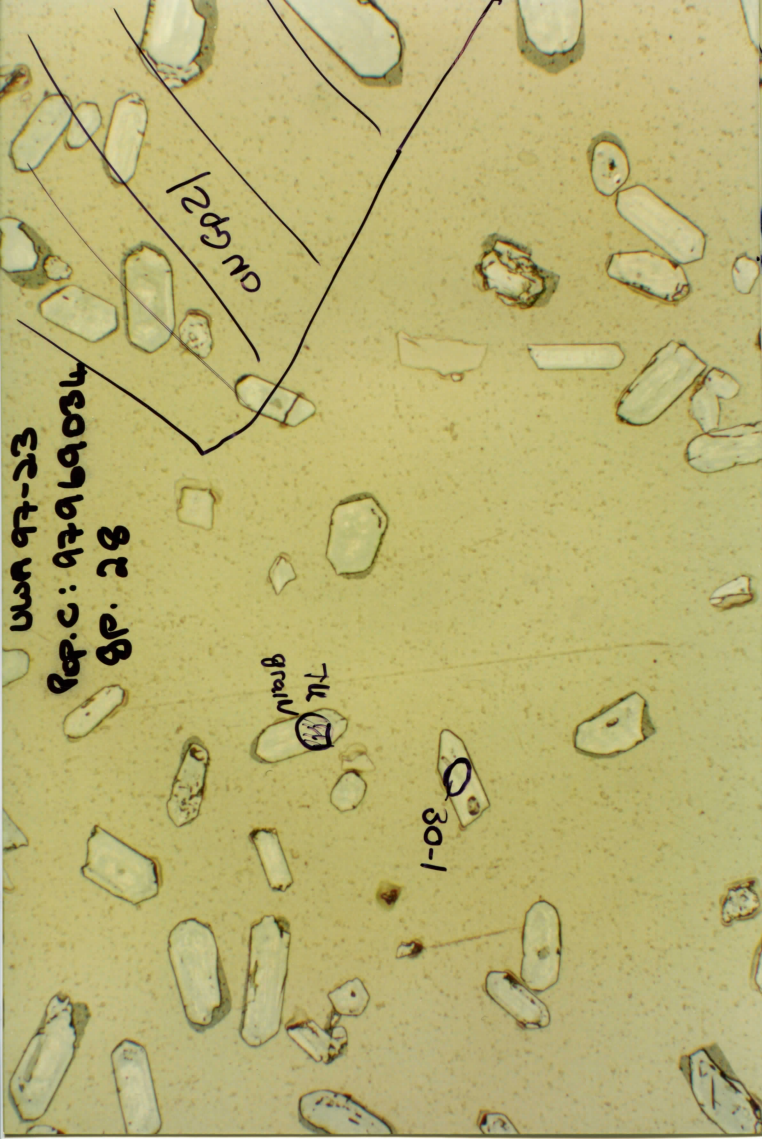
TU grain  
abundant



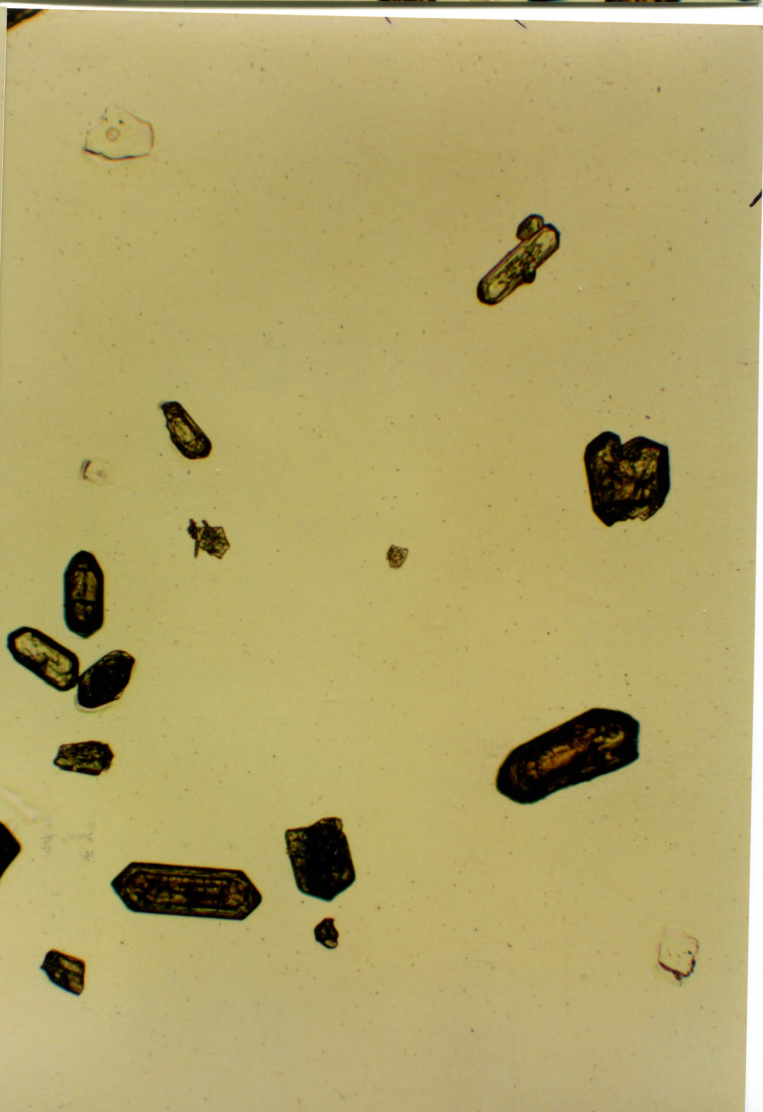
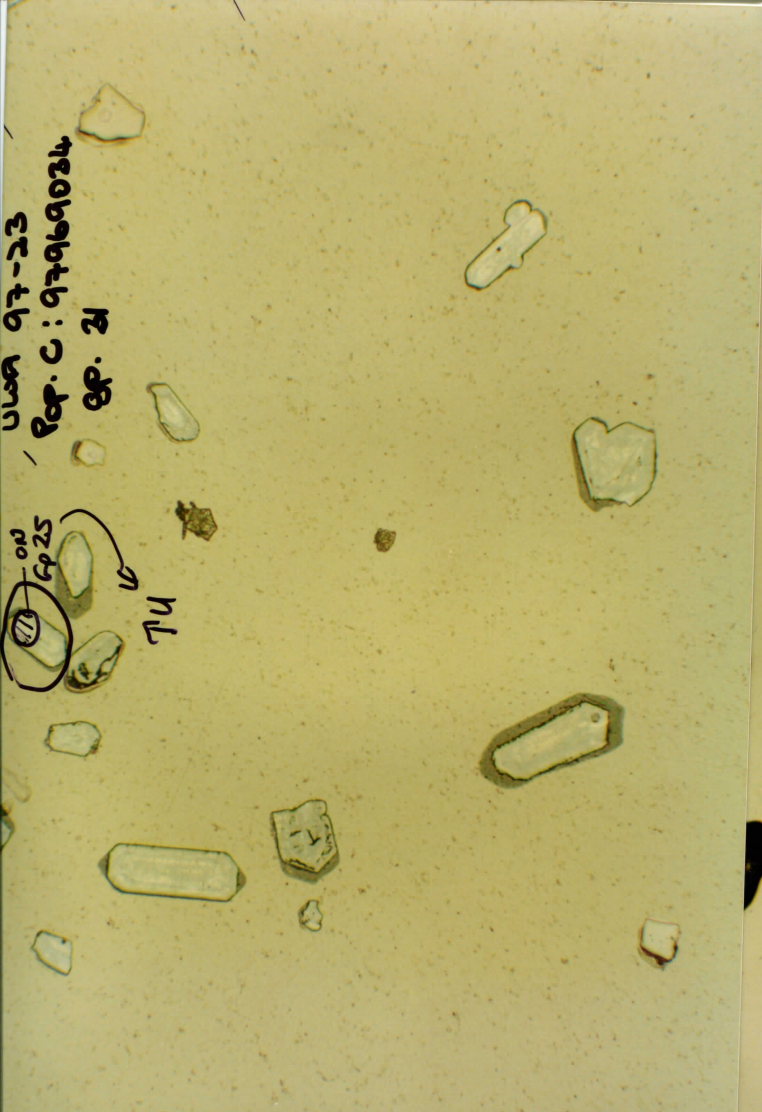
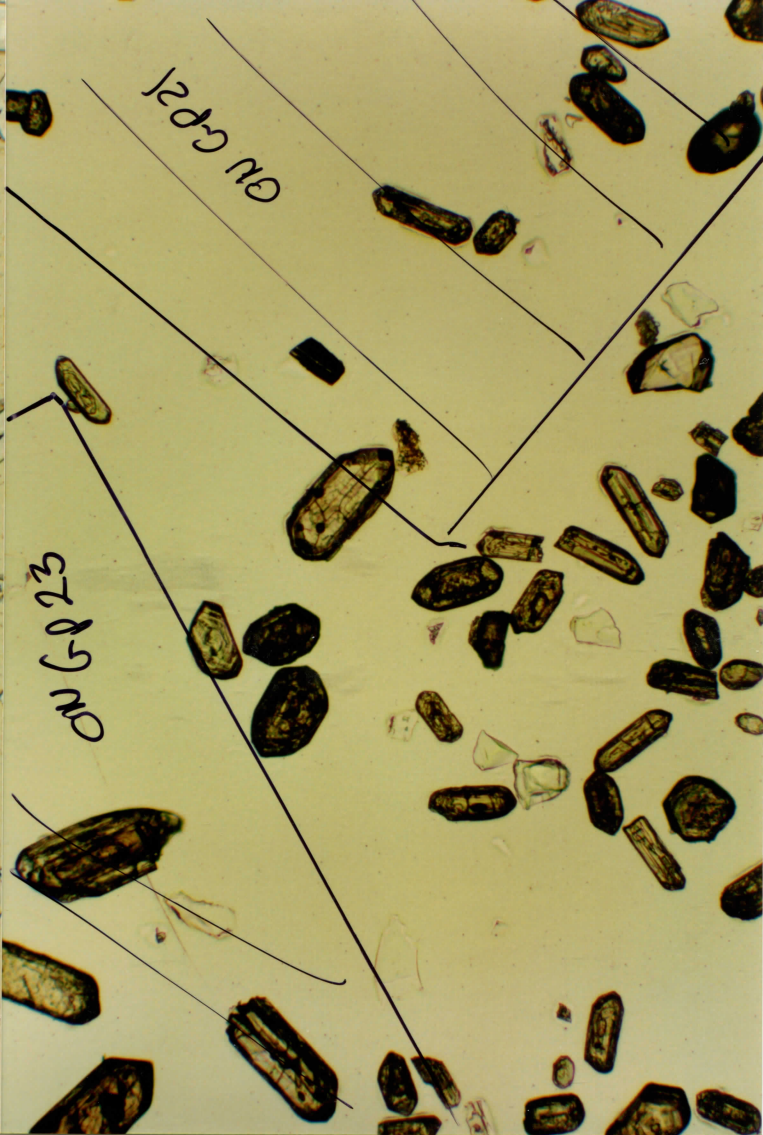






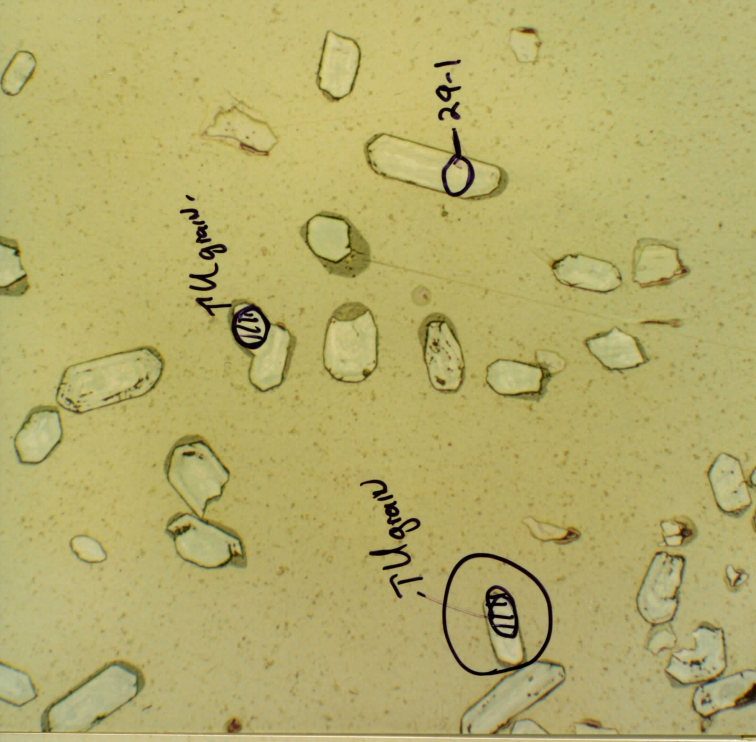




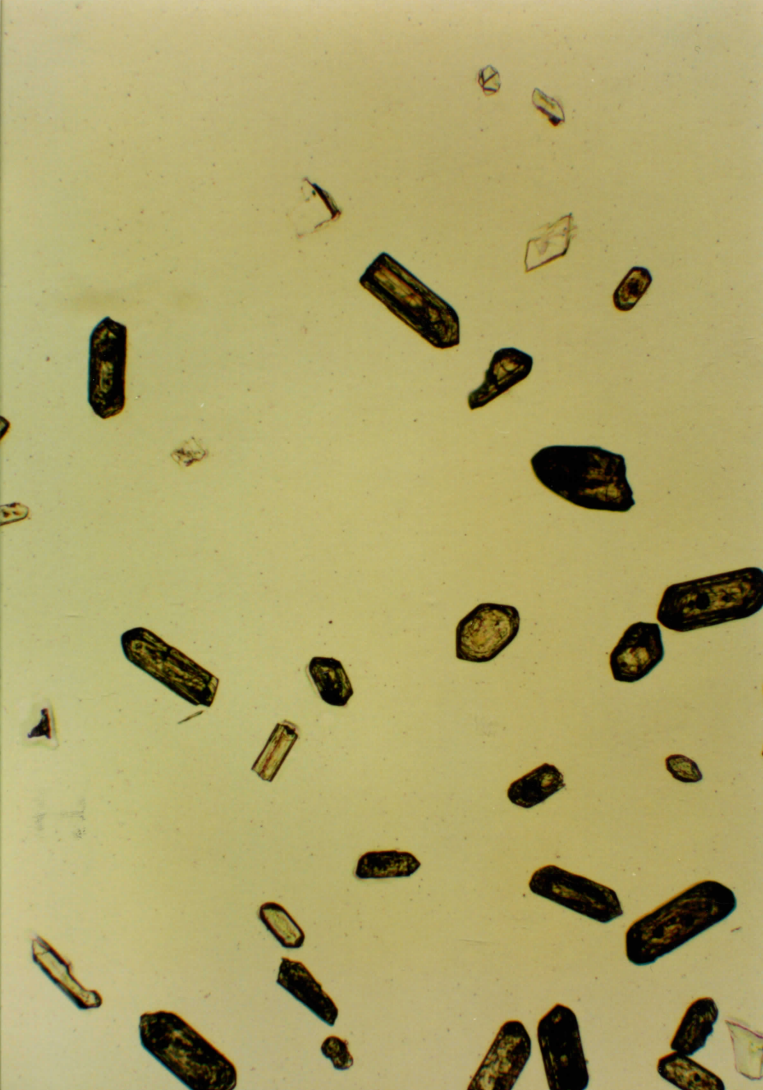




UWA 97-23  
RCP: 97969034  
GP. 32



UWA 97-23  
RCP: 97969034  
GP. 33





USA 97-23

Pop. C: 97969034

gp. 34

7U grain.

7U grain

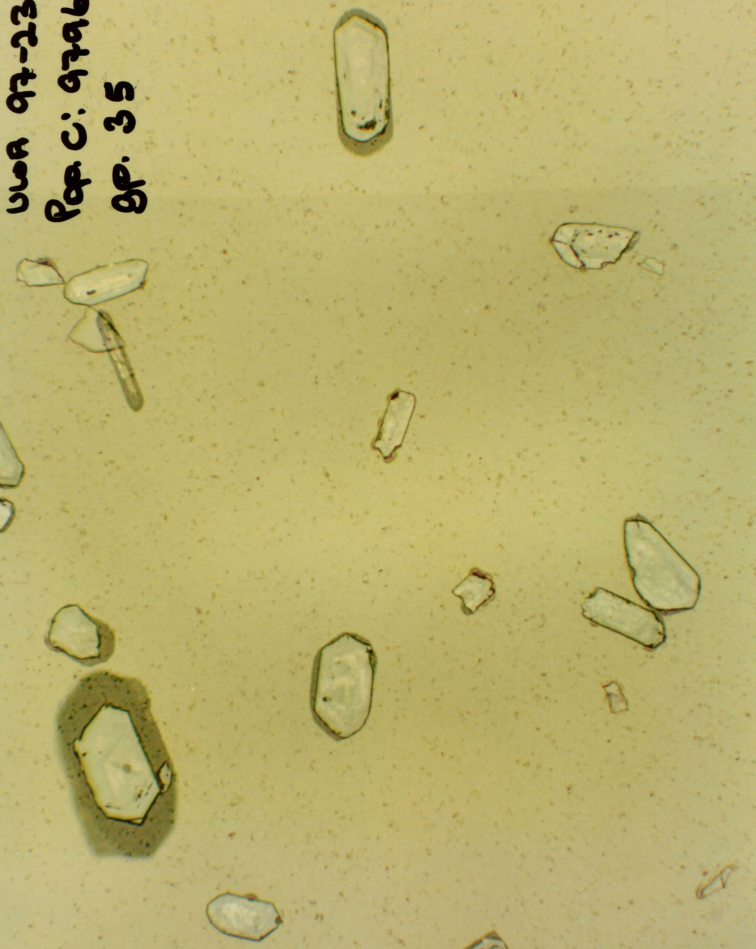
7U grain.



USA 97-23

Pop. C: 97969034

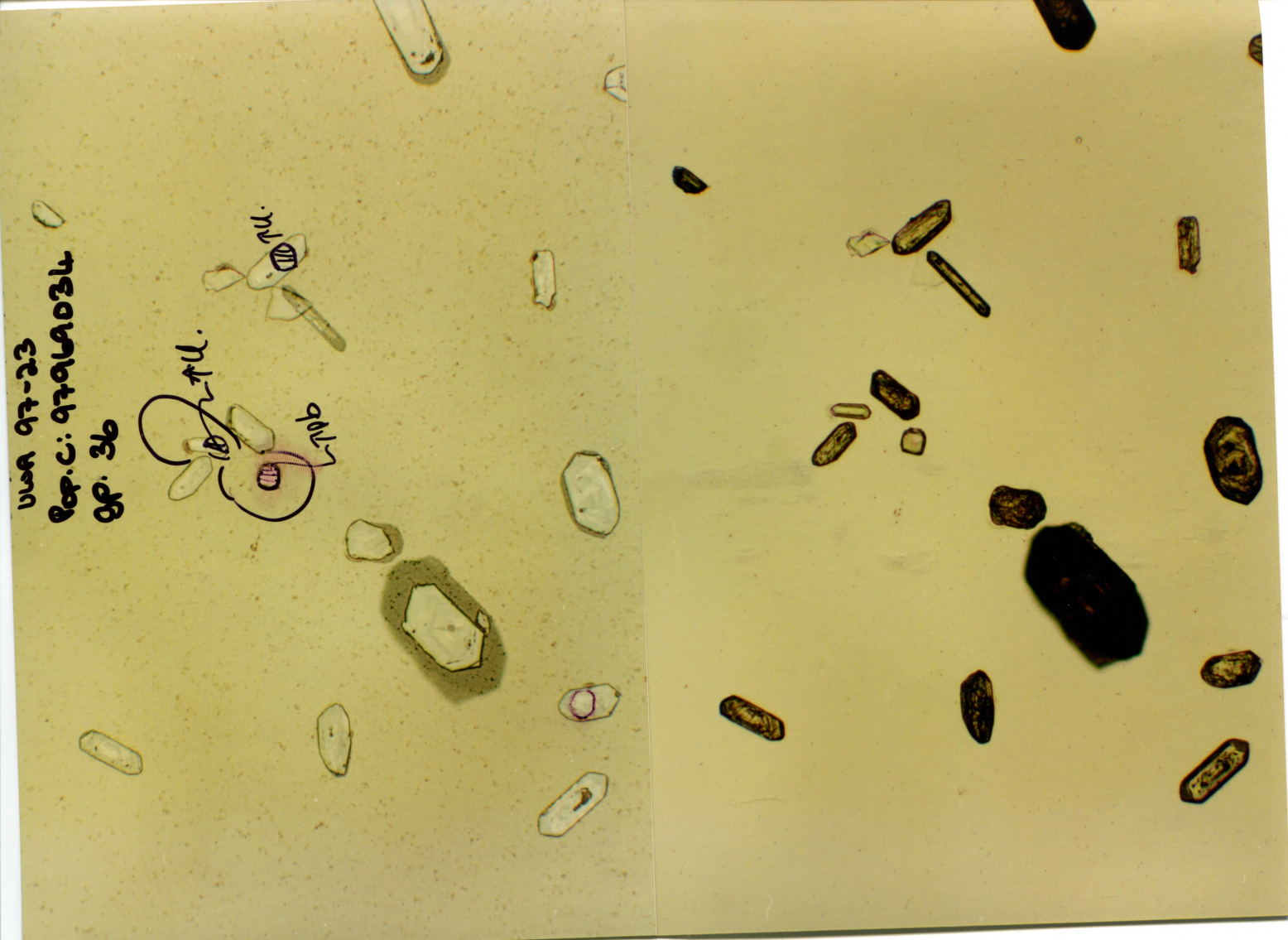
gp. 35





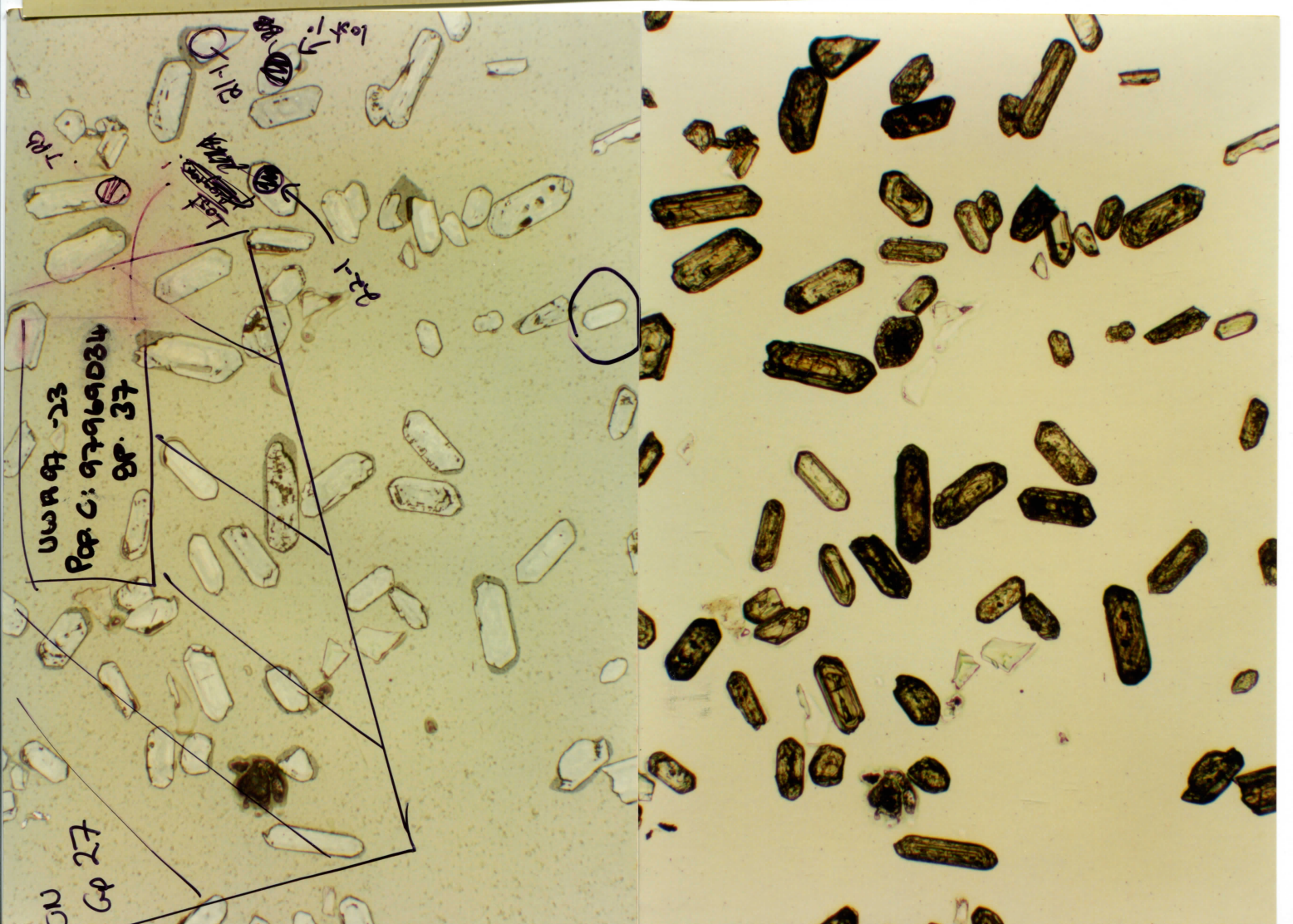
UWA 97-23  
Pop. C: 97969034  
GP. 36

Drill.  
pml



UWA 97-23  
Pop. C: 97969034  
GP. 37

lost 10  
pml  
pml  
pml



GP 27



