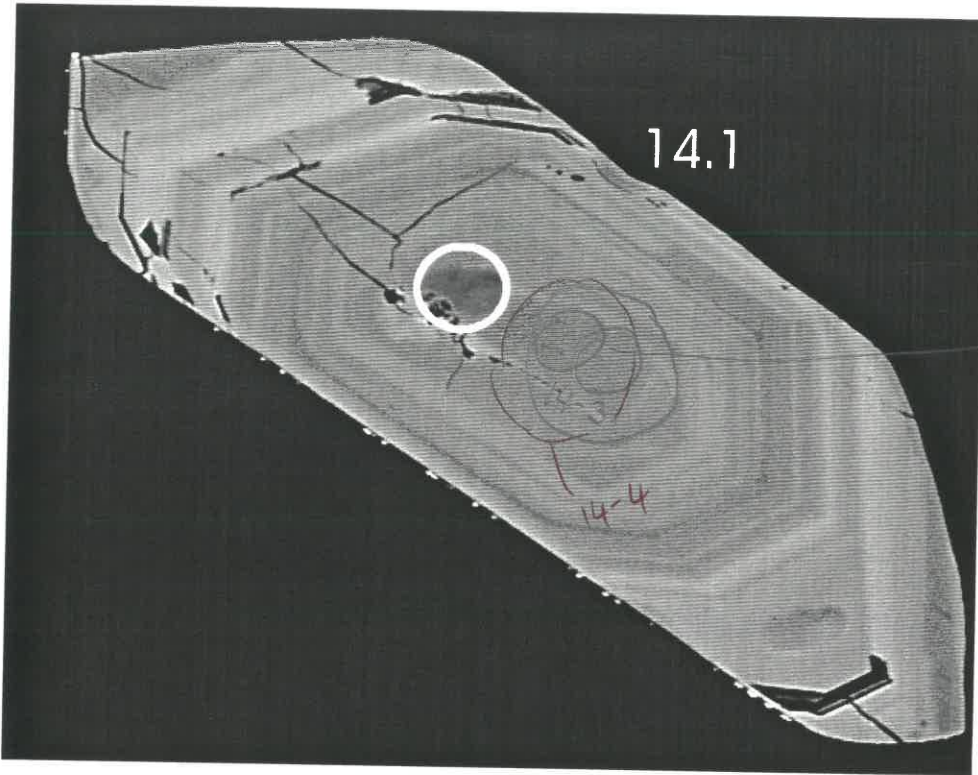


already analysed spots from
Sample C: BIT on mount: UWA 97-42

corresponds to sample BIT-1 in the manuscript!

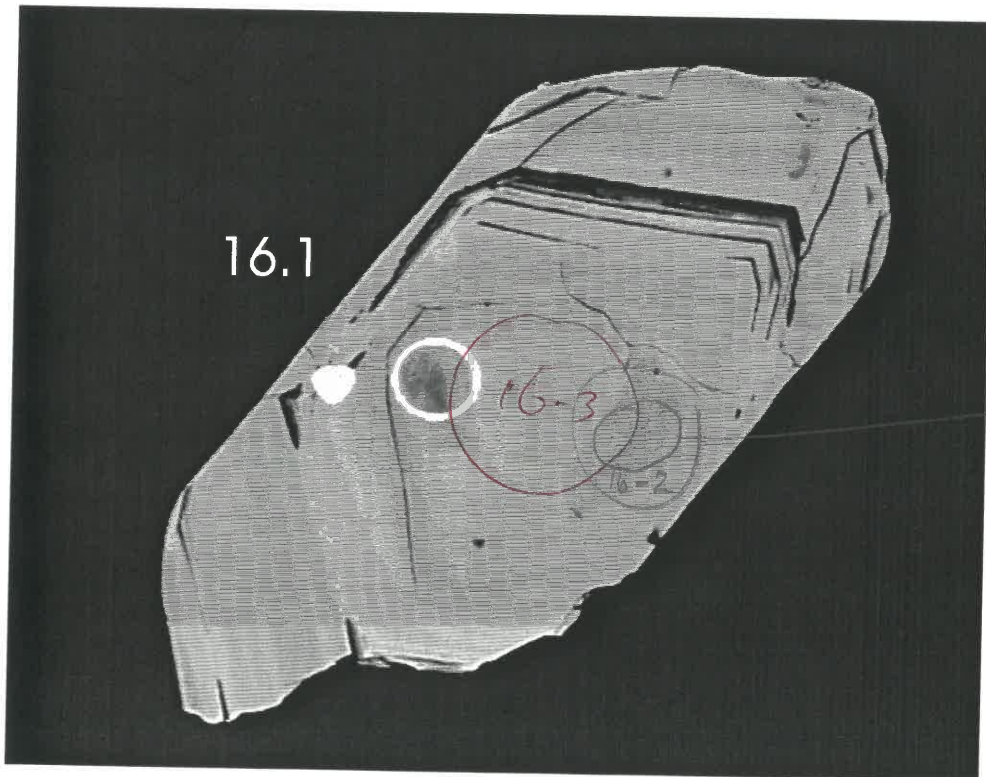
Bit 14



1237 ± 37

? cleaner spot

Bit 16

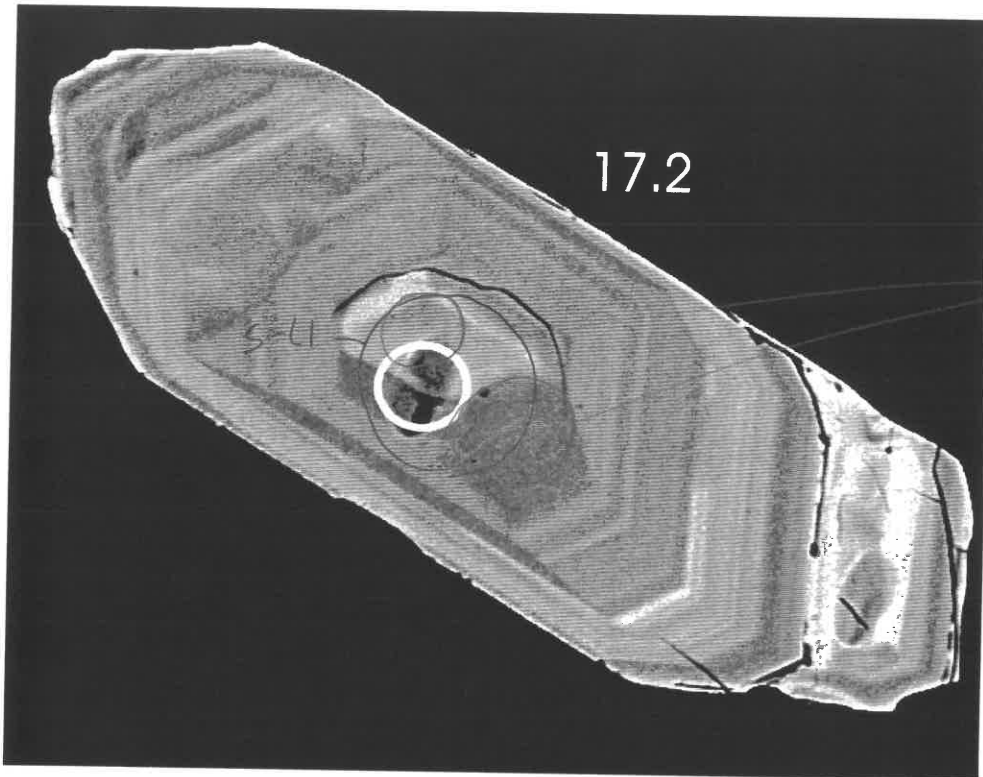


1350 ± 24

larger
"inner
core"

+ any others exposed by re-polishing.

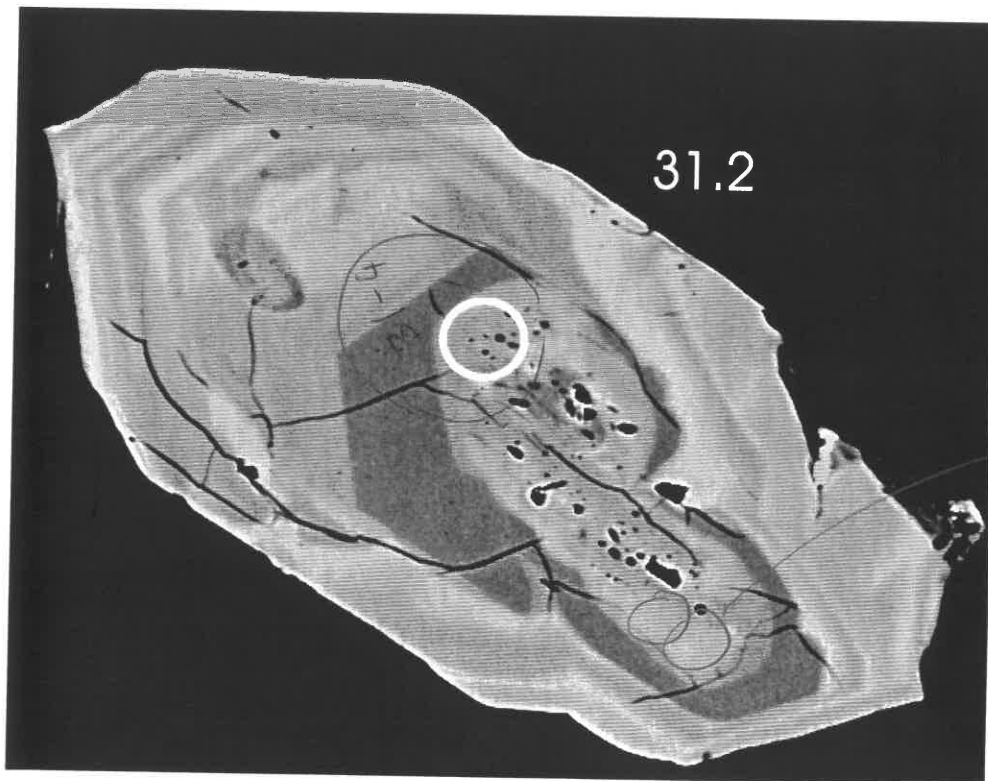
Bit 17



1504 ± 16

*Better
position(s)*

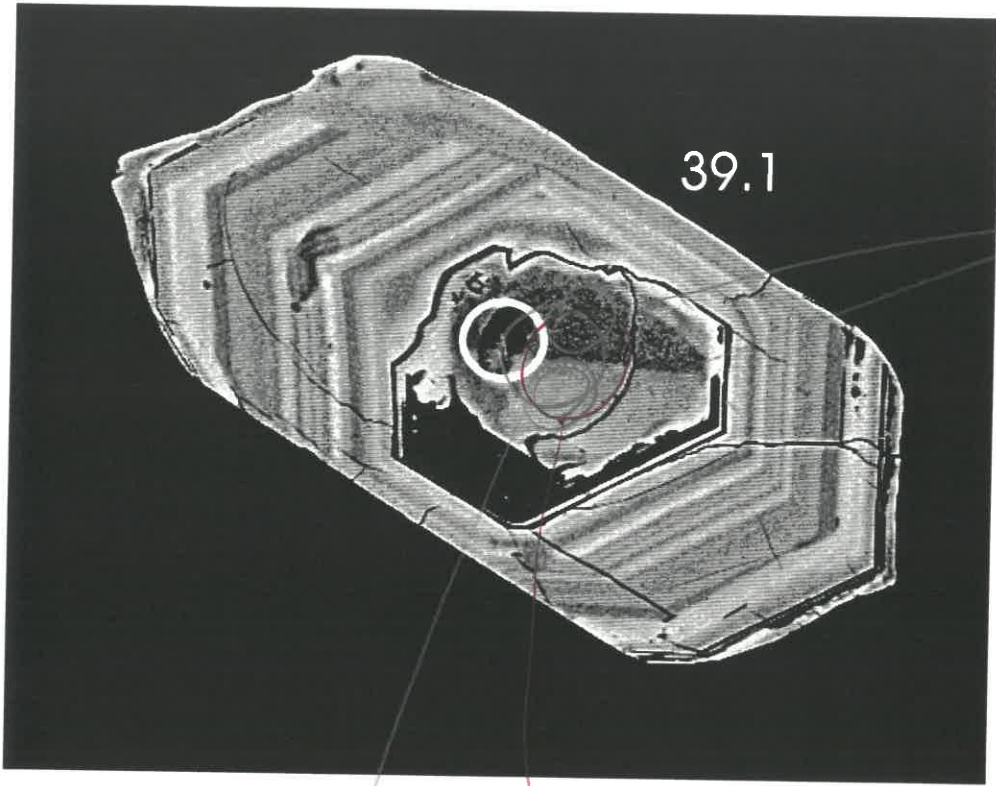
Bit 31



1217 ± 17

*alternate
position(s)*

Bit 39



1431 ± 24

39.1

*alternate
positions*

39-

39-4