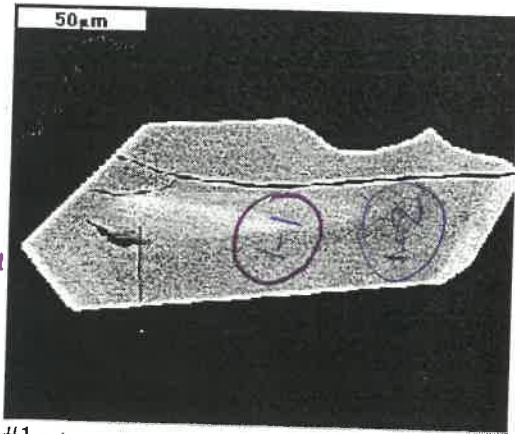
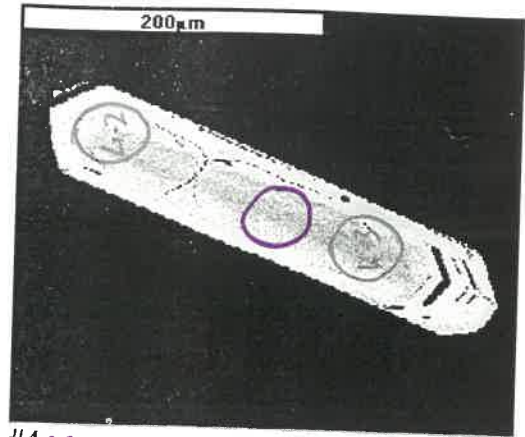


Operator: Frank B.  
 AMIRA  
 Mount: UWA98-10/A6563-6<sup>11</sup>  
 Maldon/19-11-97 #6 (3-98)  
 Res: Fine  
 (17 Mar 98 13:05:00)



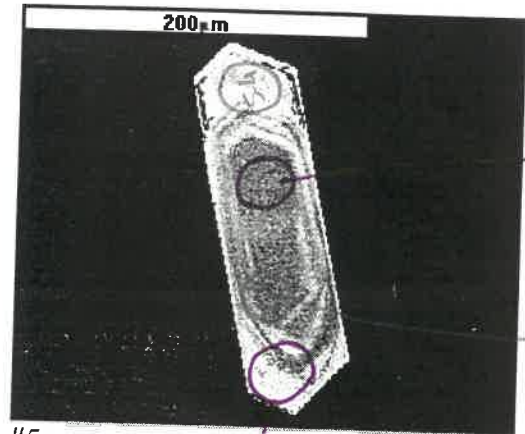
#1 -1

367 ± 11 Ma



#4 -1

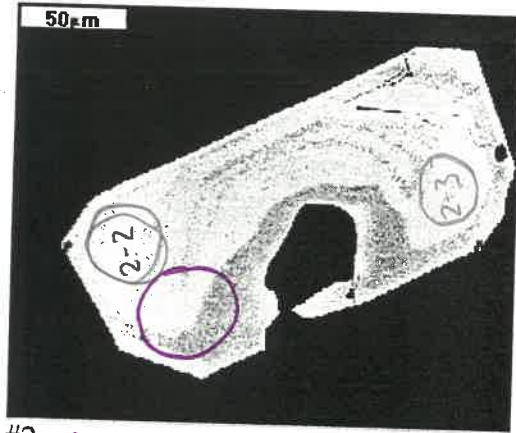
367 ± 11 Ma



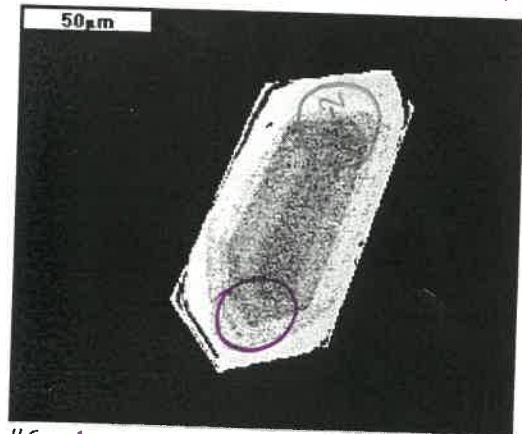
#5

5-1  
 (347 ± 11 Ma)

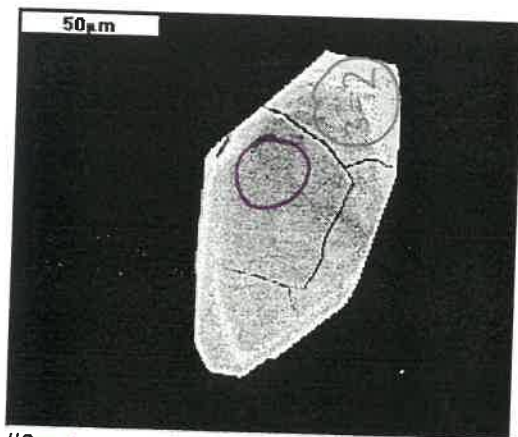
5-2 (374 ± 11 Ma)



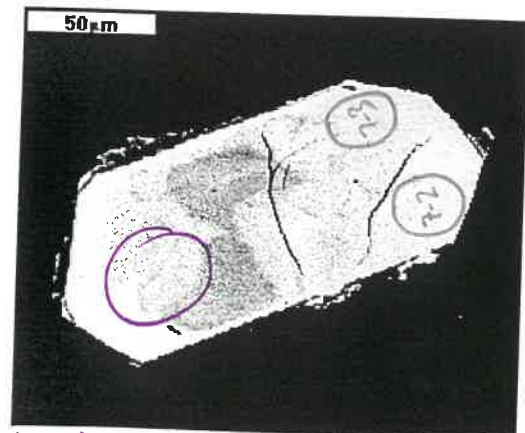
#2 -1



#6 -1

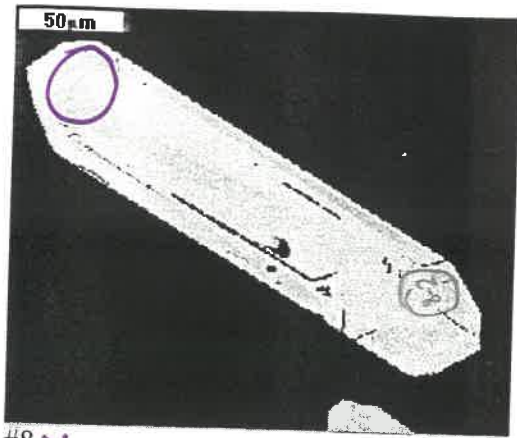


#3 -1

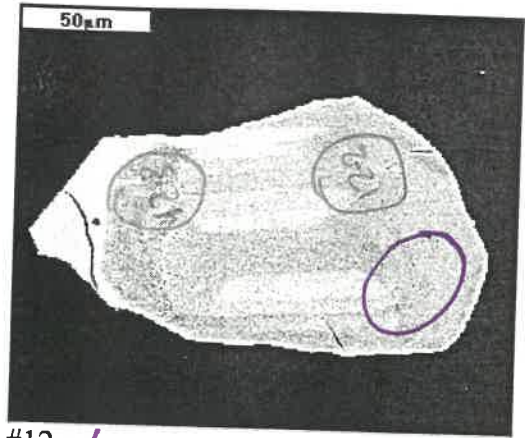


#7 -1

371 ± 11 Ma

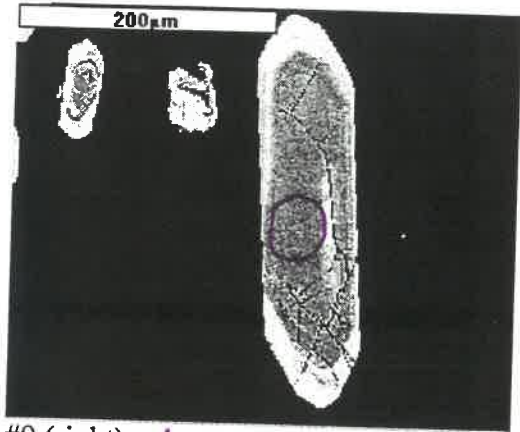


#8 - |

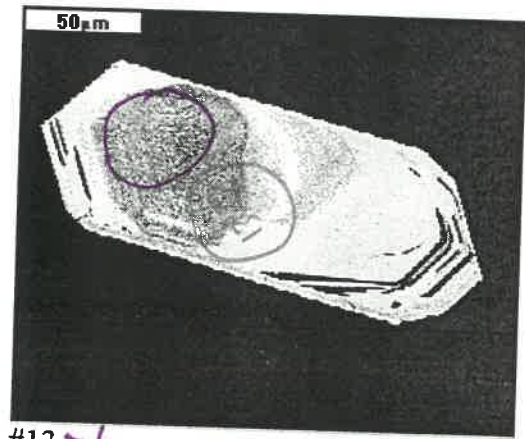


#12 - |

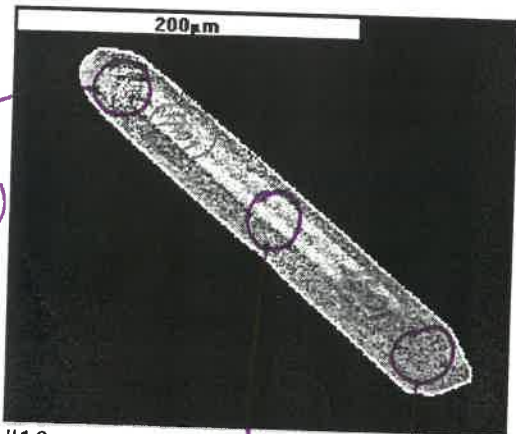
378 = 12A



#9 (right) - |



#13 - |

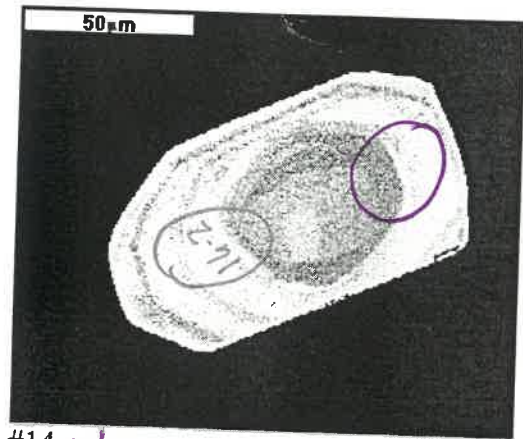


#10

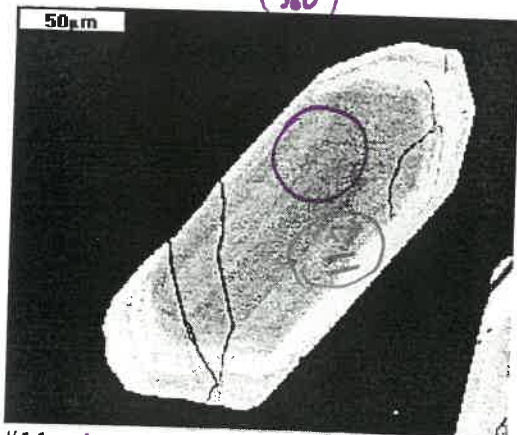
10-3  
(369 = 11A)

10-2  
(360)

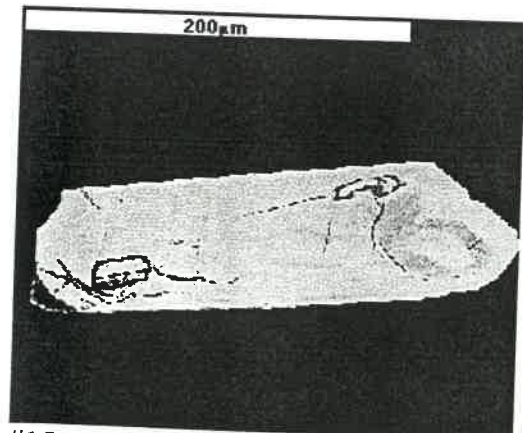
10-1 (379)



#14 - |

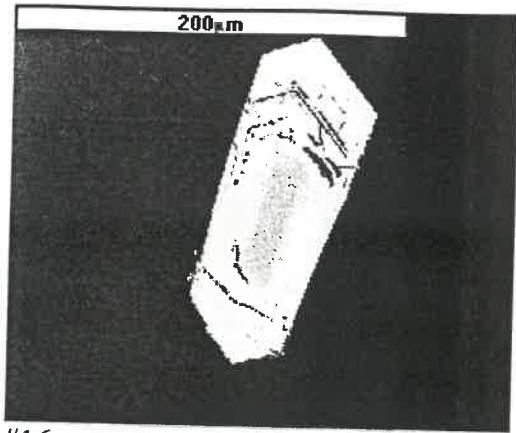


#11 - |



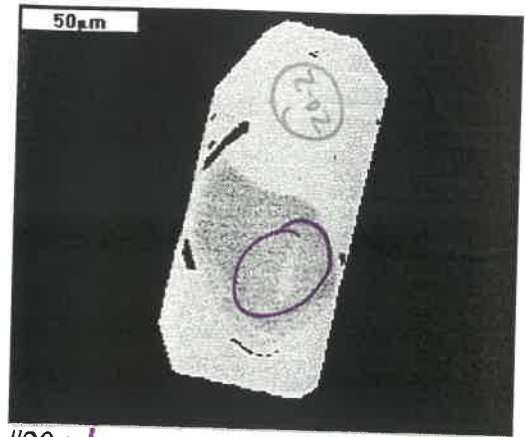
#15

X  
(not analysed)

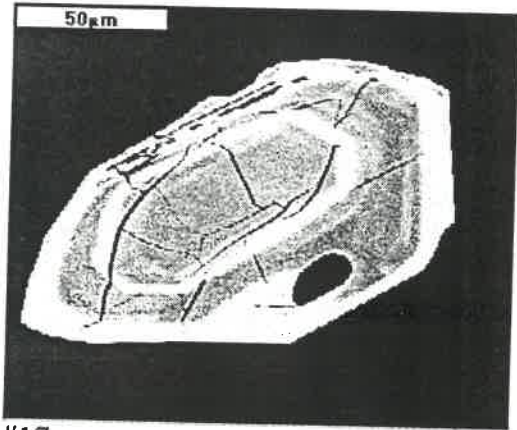


#16

x

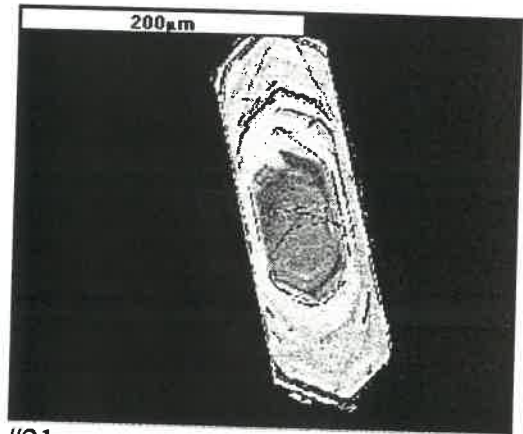


#20 -1



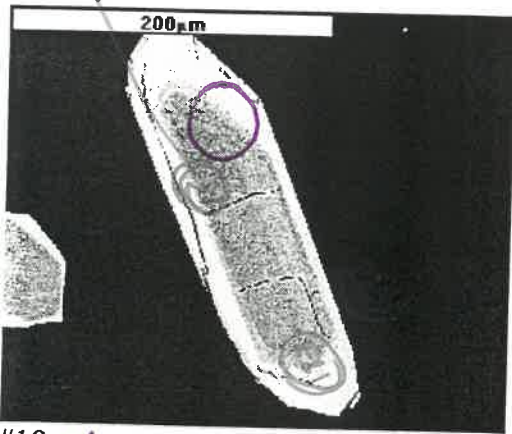
#17

x



#21

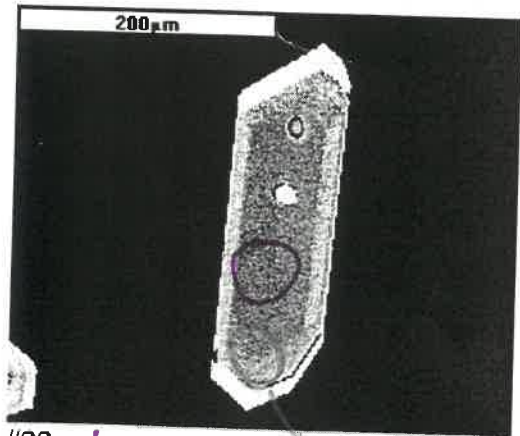
x



#18 -1

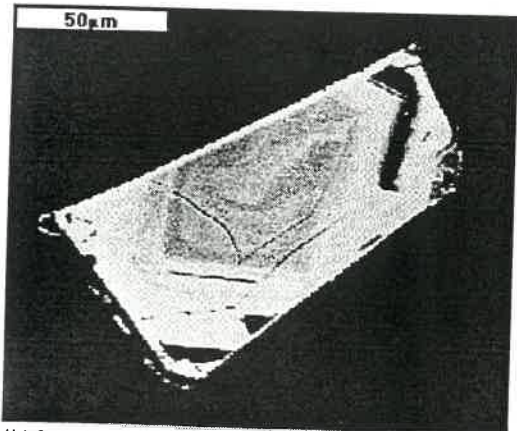
18-2

369 ± 11 Ma  
(high U)



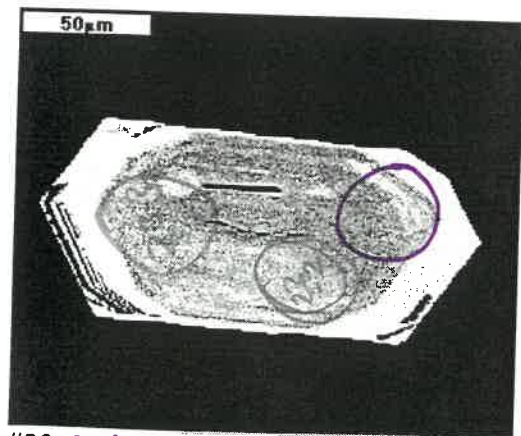
#22 -1

22-2



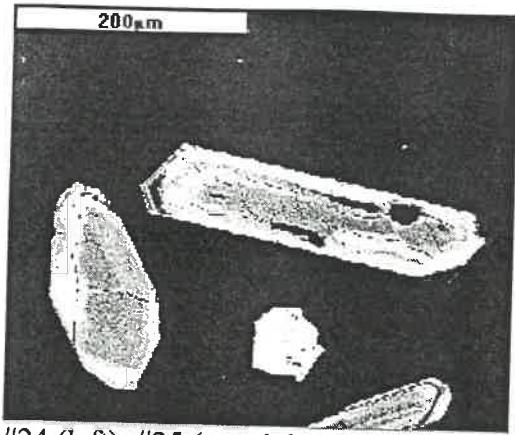
#19

x



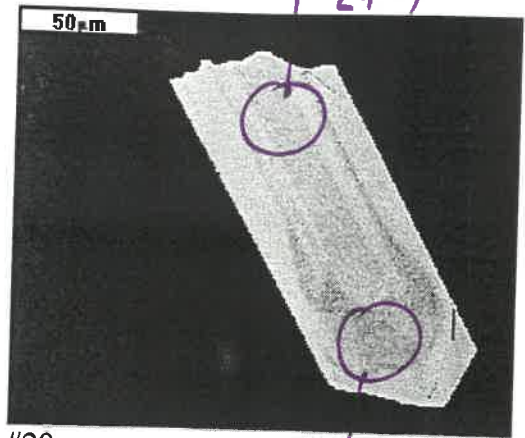
#23 -1

375 ± 11 Ma



#24 (left); #25 (top right)

x



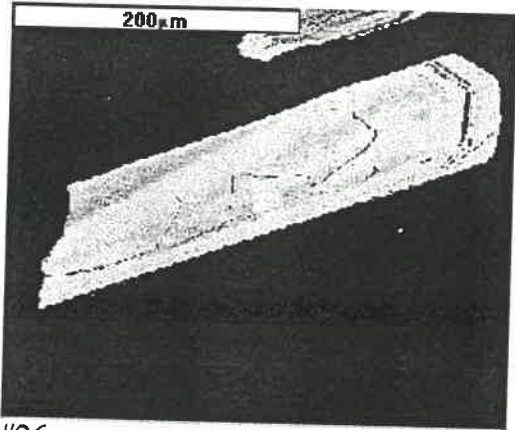
#29

29-1

363 ± 11 Ma

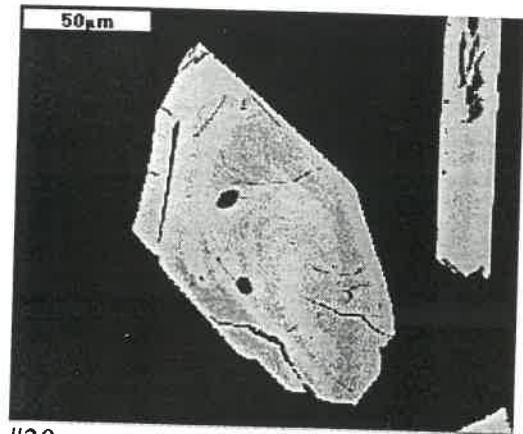
29-2

368 ± 11 Ma



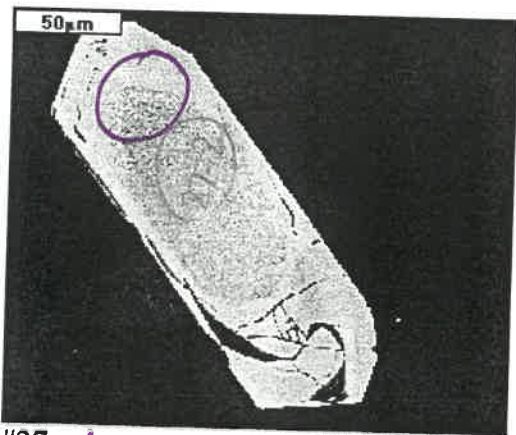
#26

x

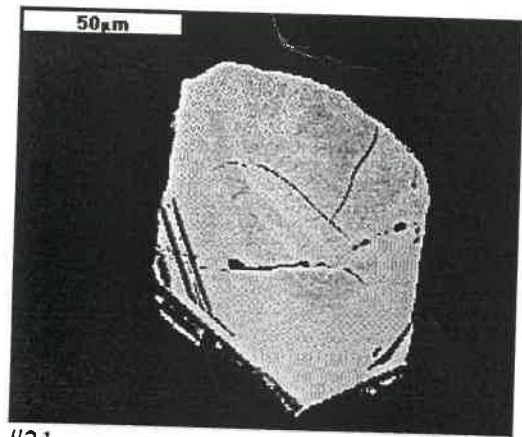


#30

x

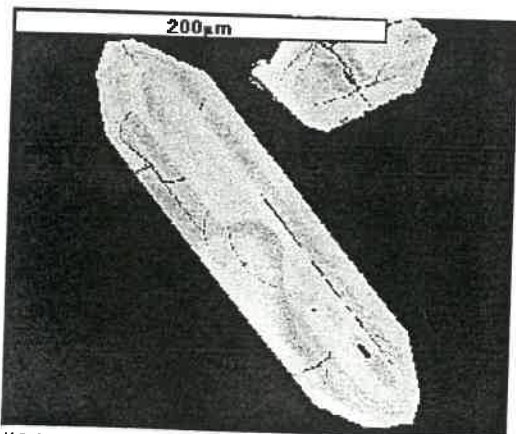


#27 -1



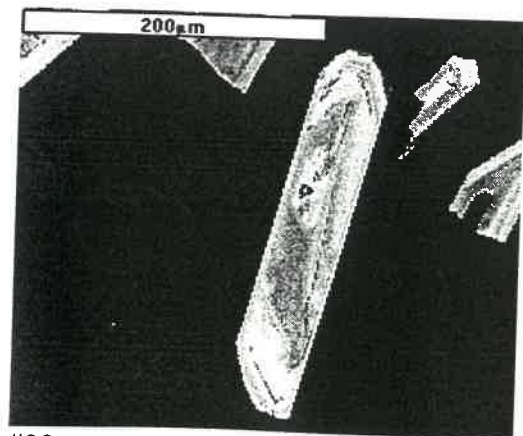
#31

x



#28

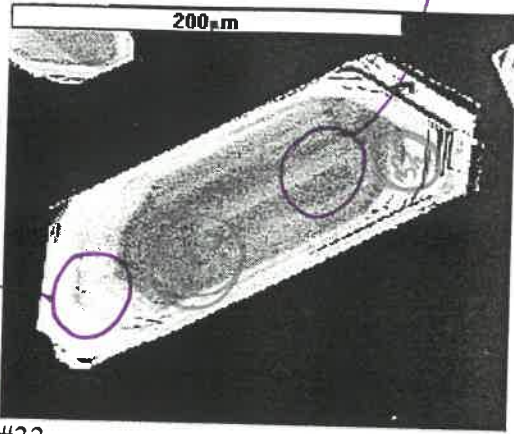
x



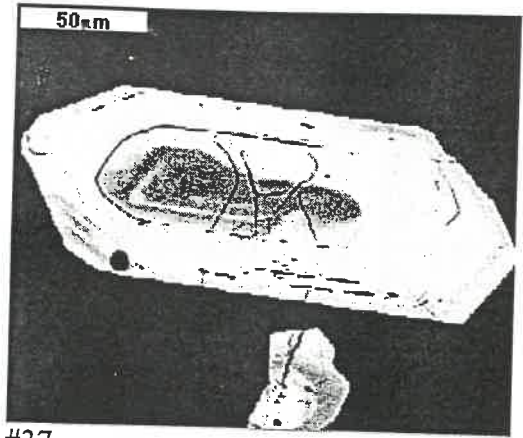
#32

x

33-1 (366±11μ)

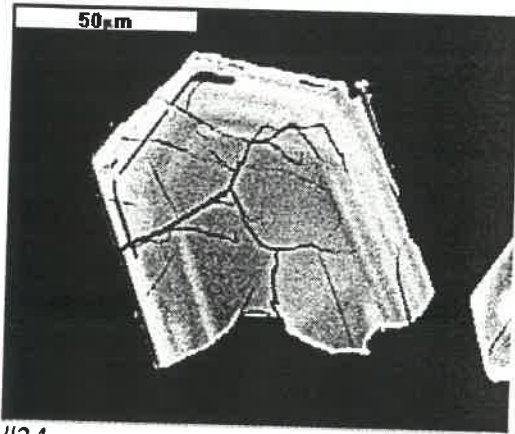


#33

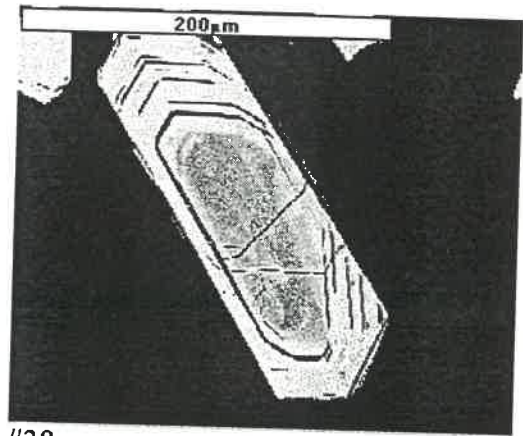


#37

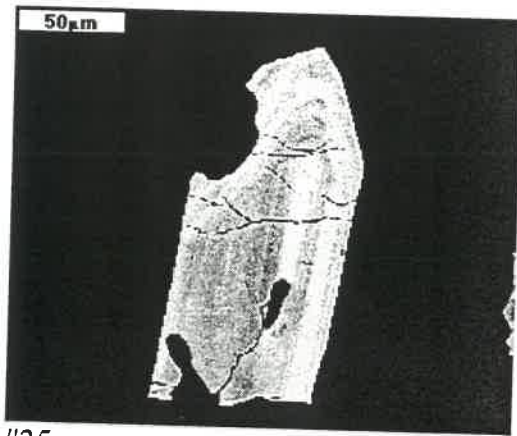
33-2  
376±11μ  
(high W)



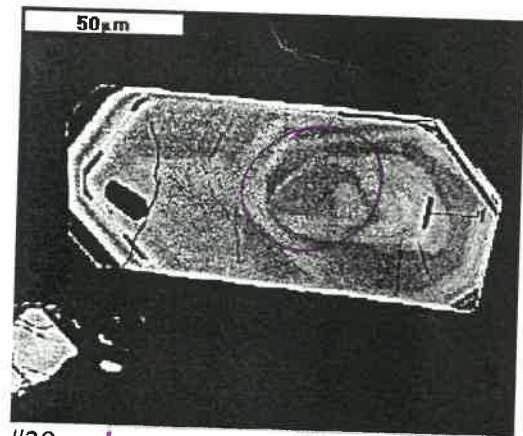
#34



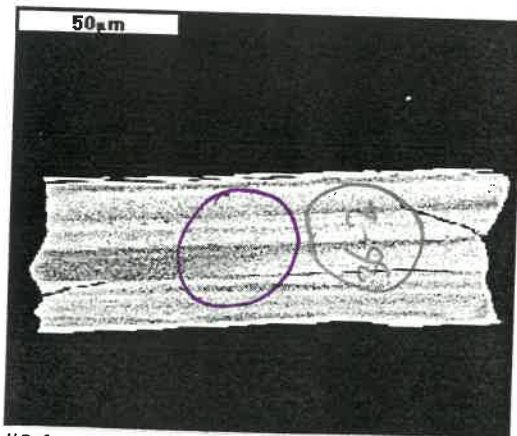
#38



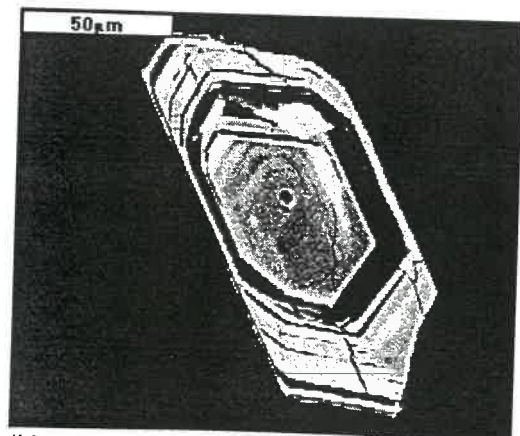
#35



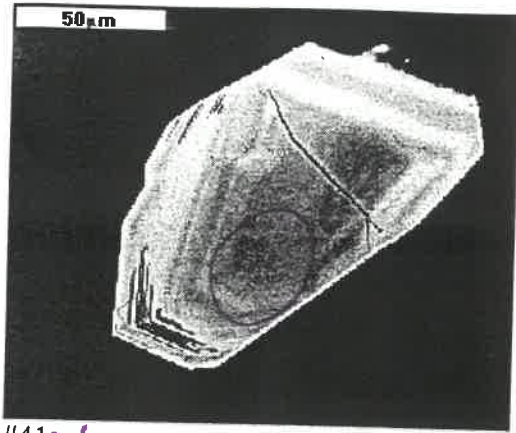
#39 - 1



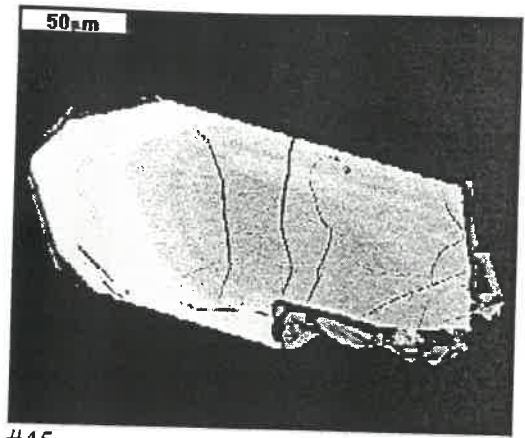
#36 - 1



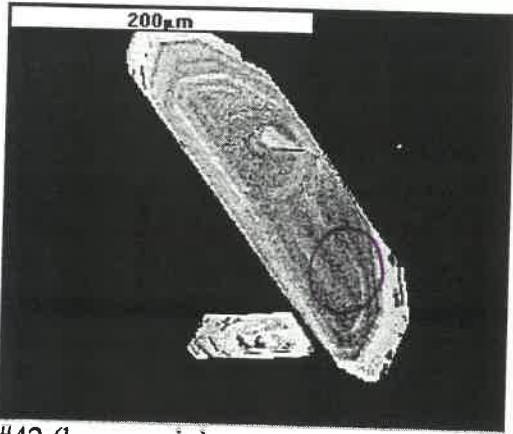
#40



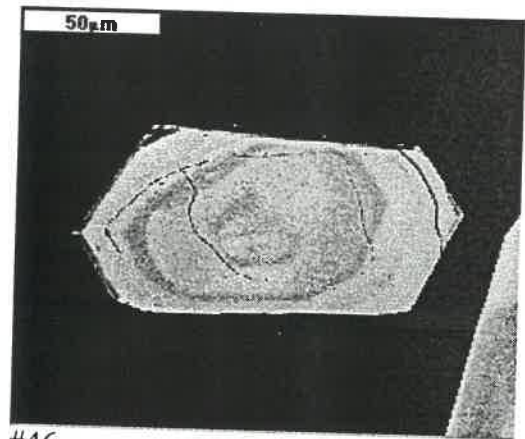
#41 - (



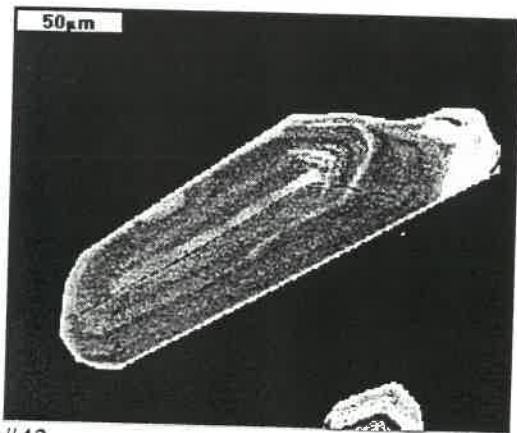
#45



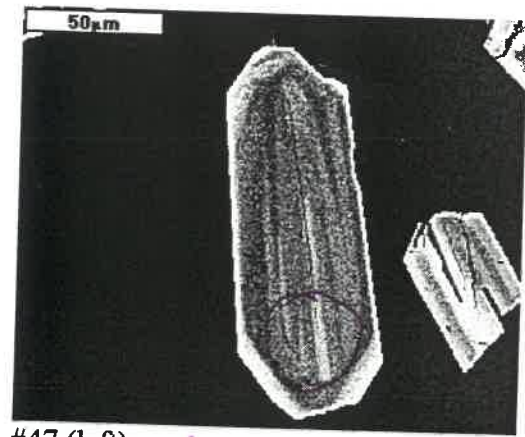
#42 (large grain)



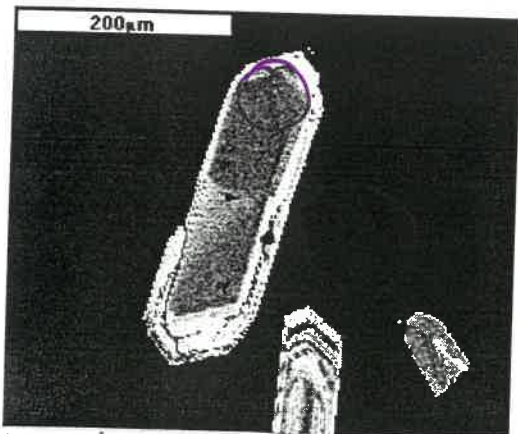
#46



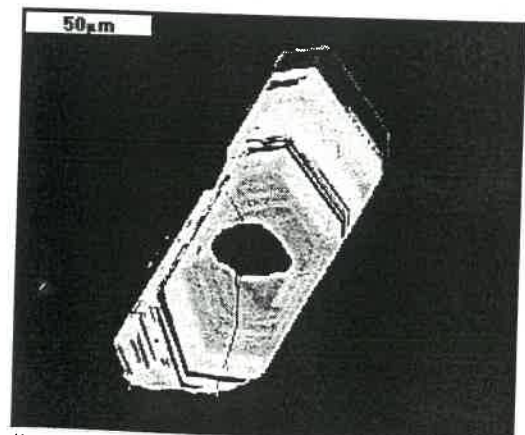
#43



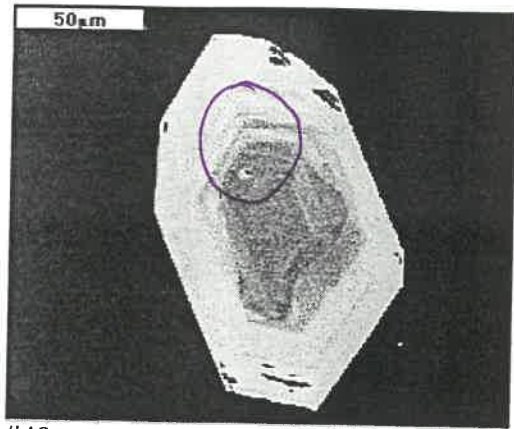
#47 (left) - |



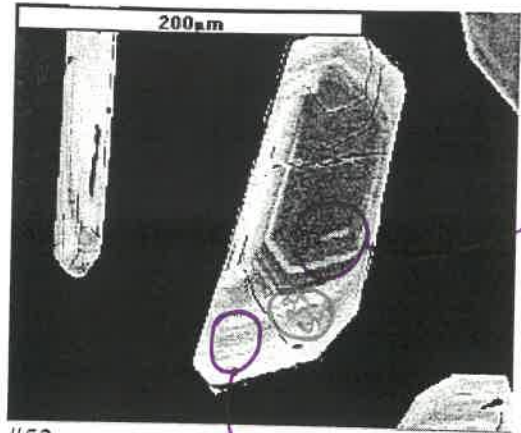
#44 - (



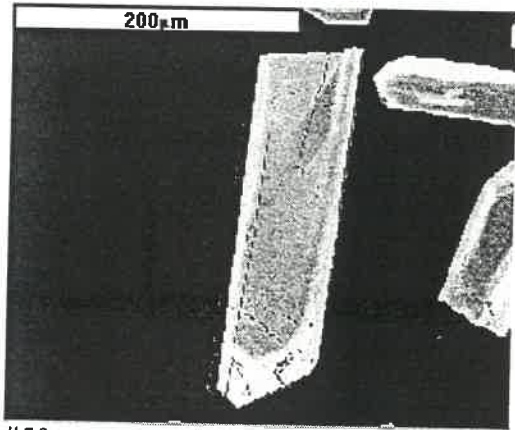
#48



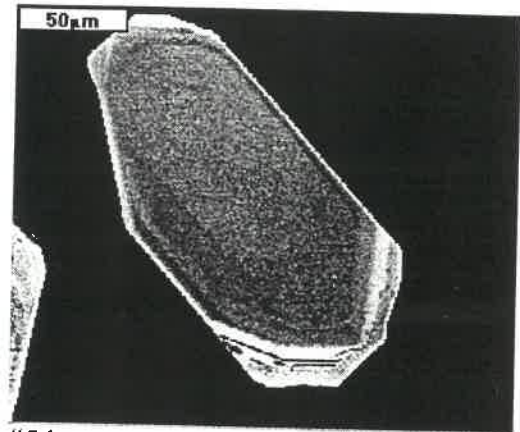
#49 - 1



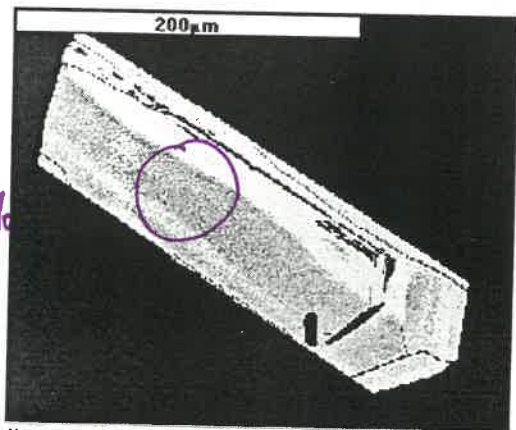
#53



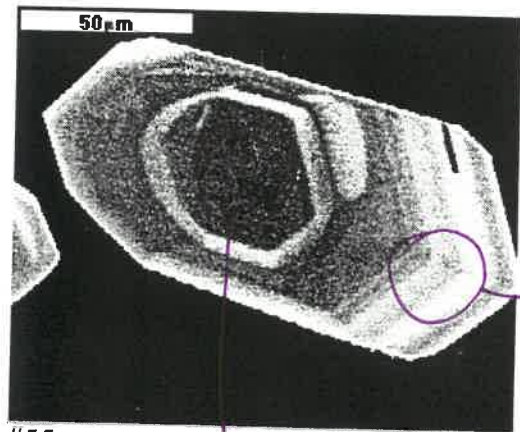
#50



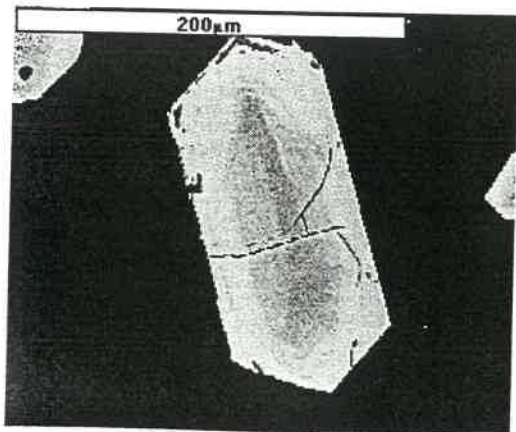
#54



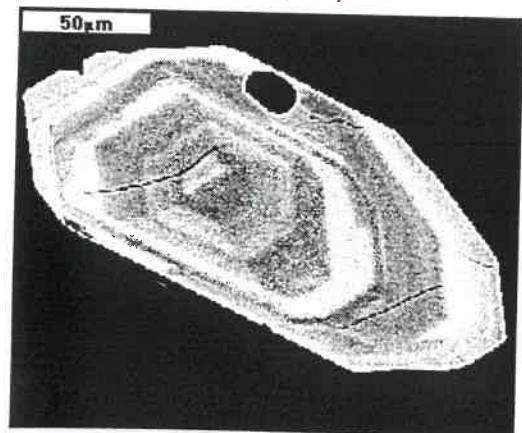
#51 - 1



#55

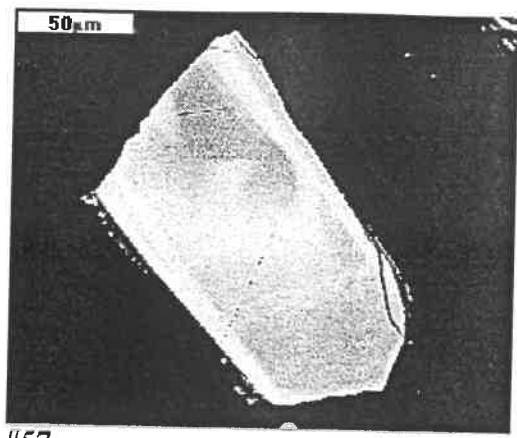


#52

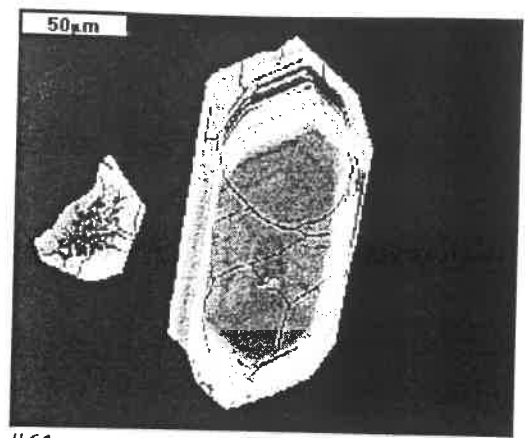


#56

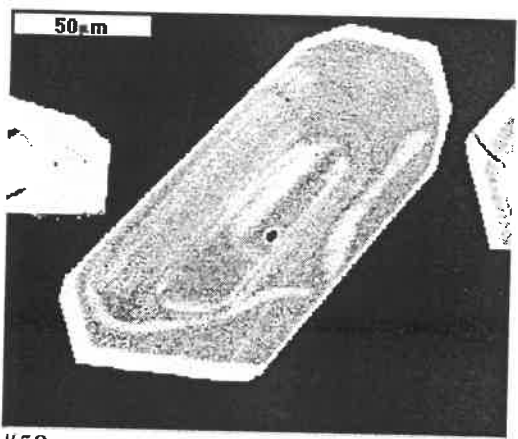
not analysed



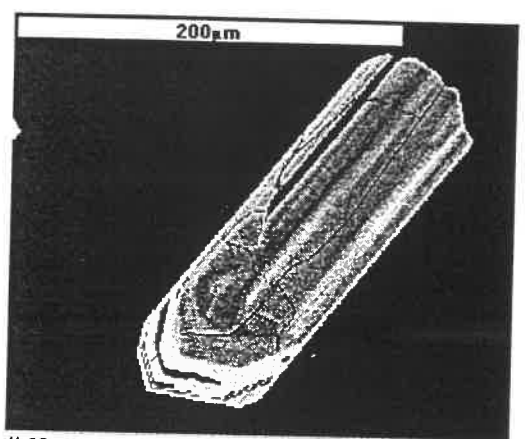
#57



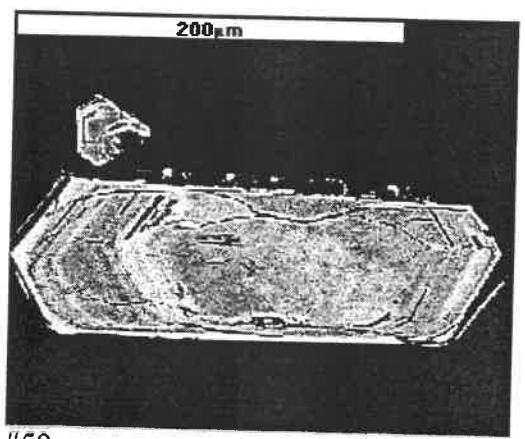
#61



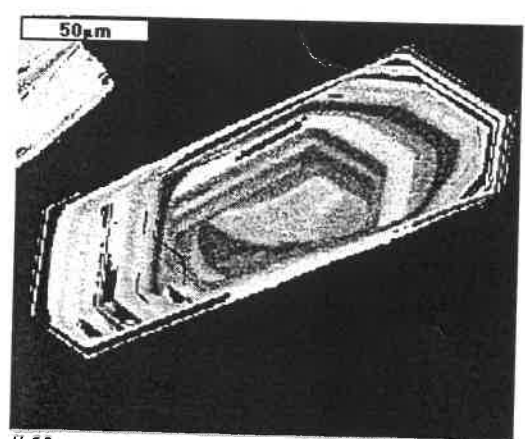
#58



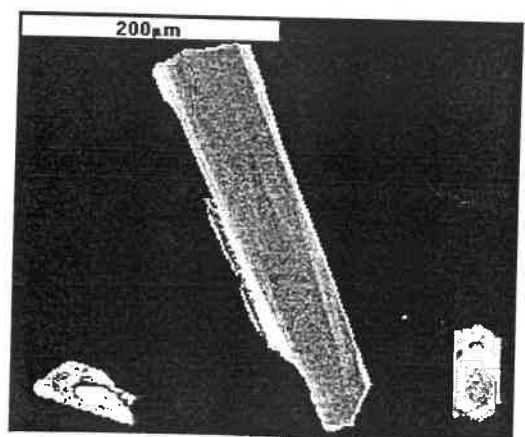
#62



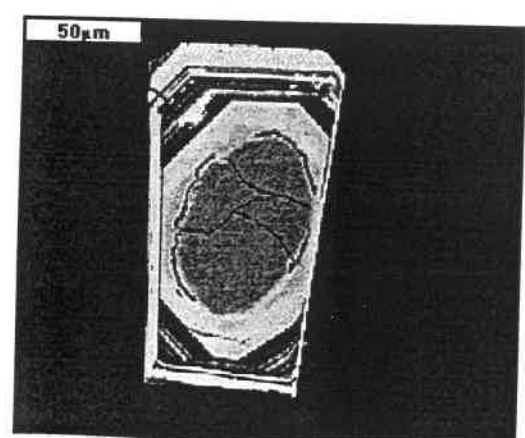
#59



#63



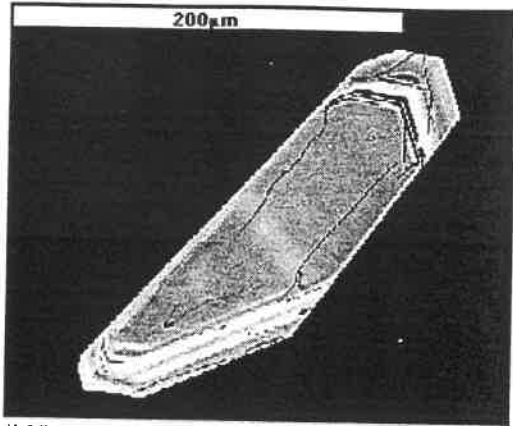
#60



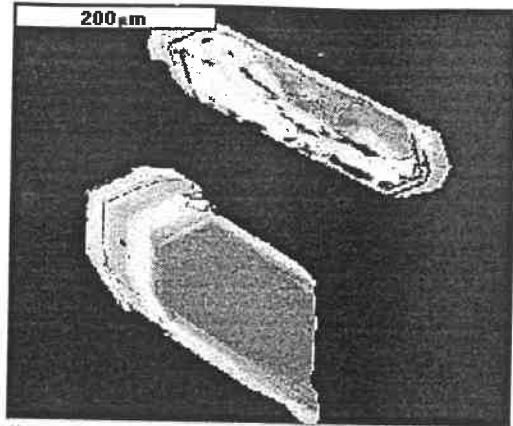
#64



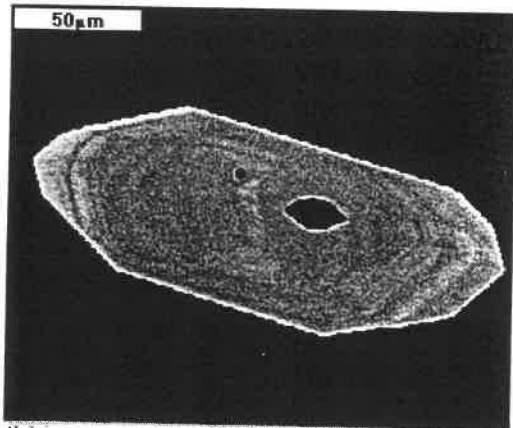
not analysed



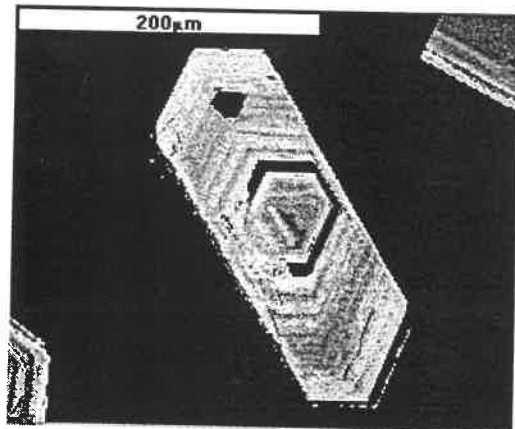
#65



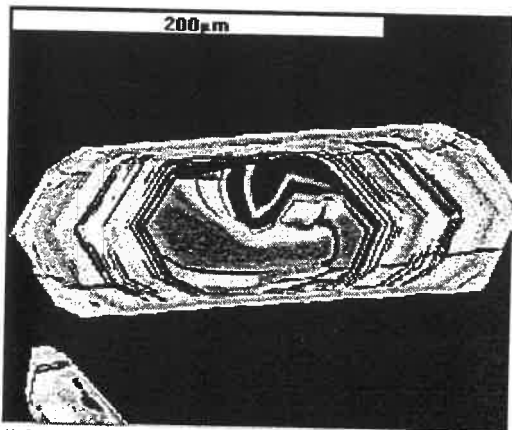
#70 (top); #71 (bottom)



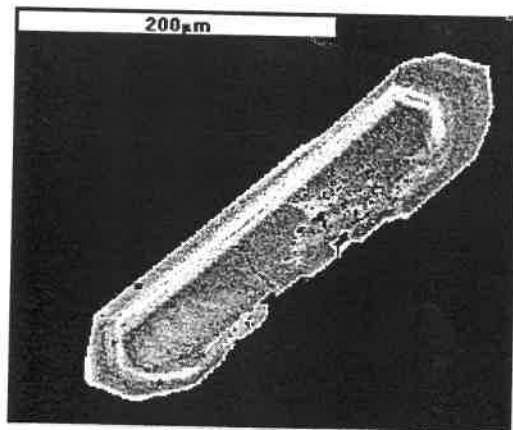
#66



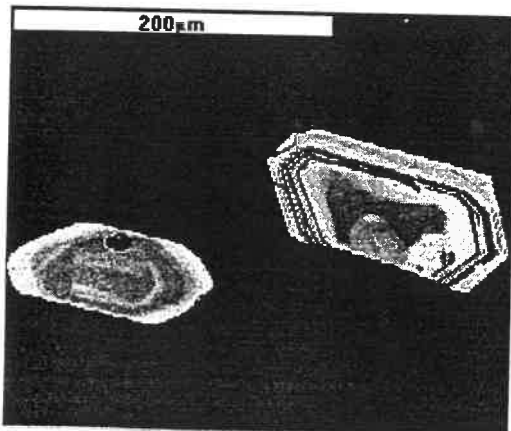
#72



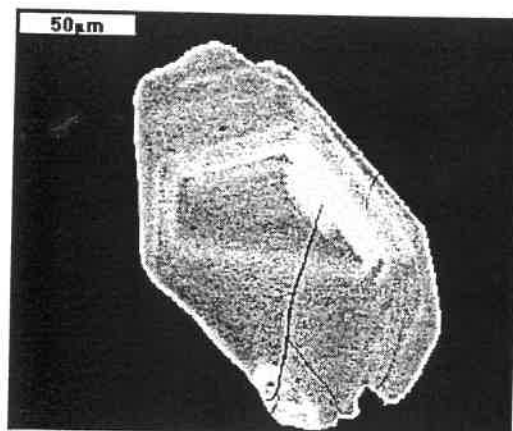
#67



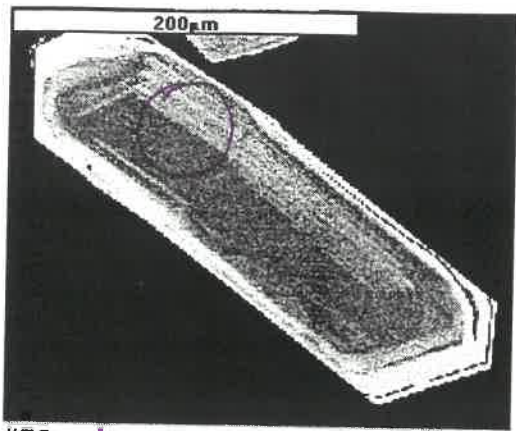
#73



#68 (right); #69 (left)



#74



#75 - 1

$371 \pm 11$  Ma

B.76-1 (not imaged)

$383 \pm 12$  Ma

(core) } Photo #61.

B.76-2 ( " )

$363 \pm 11$  Ma

(rim) }