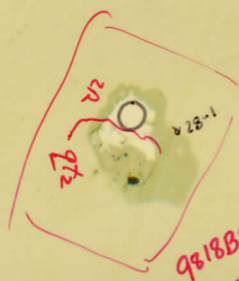


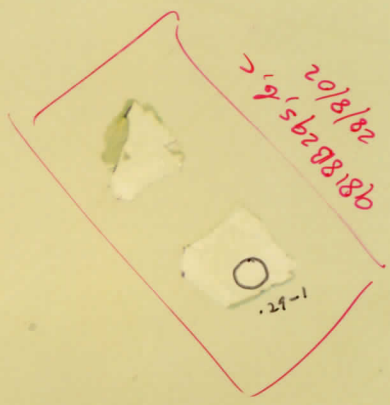
UWA 98-18  
Pop B: PAR-12 WT  
gp. 29

UWA 98-18  
Pop B: PAR-12 WT  
gp. 30

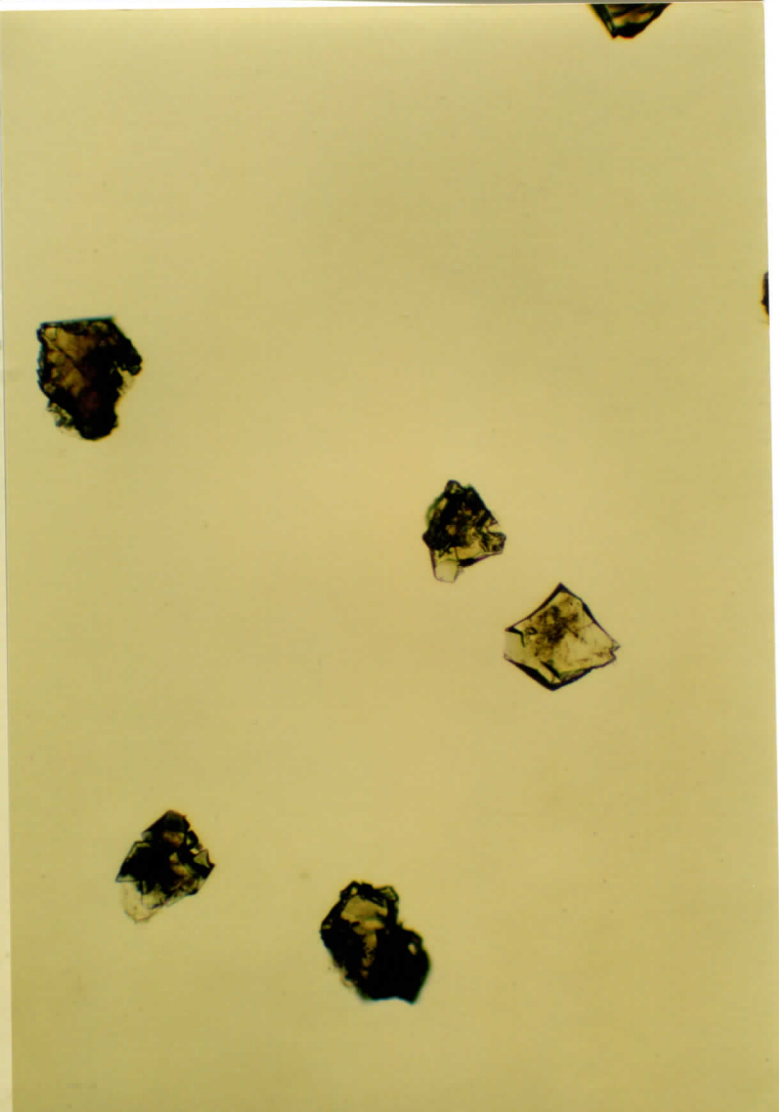
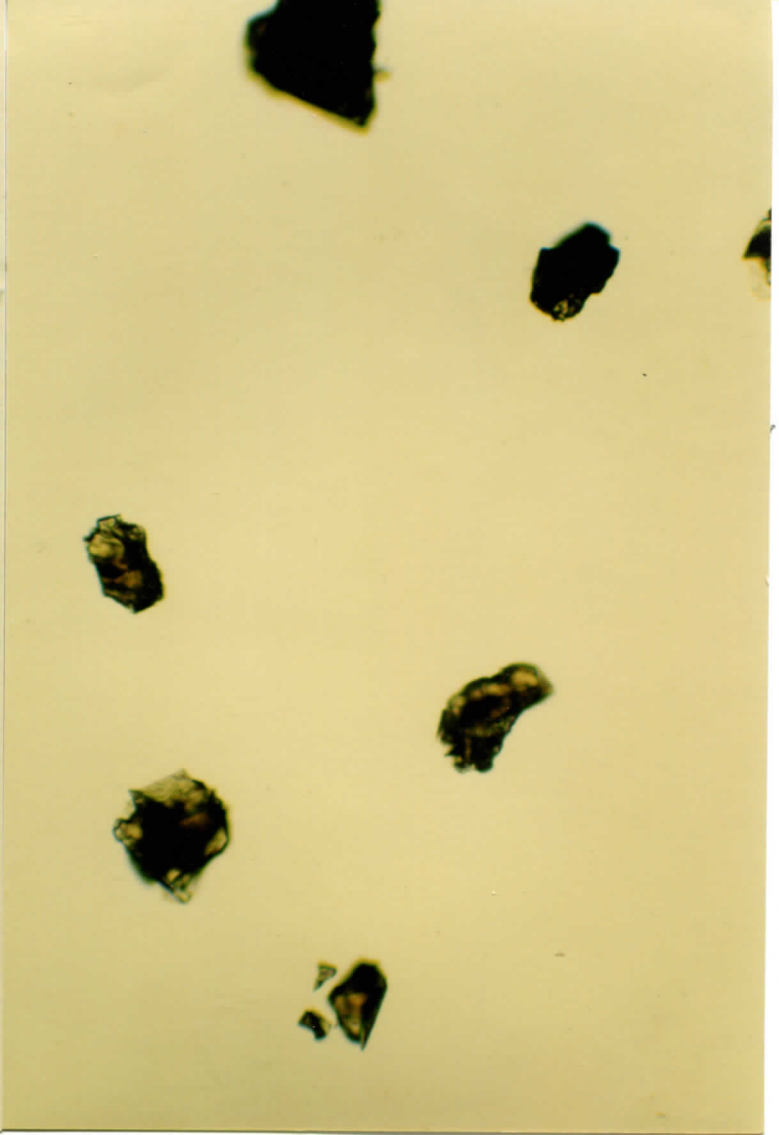
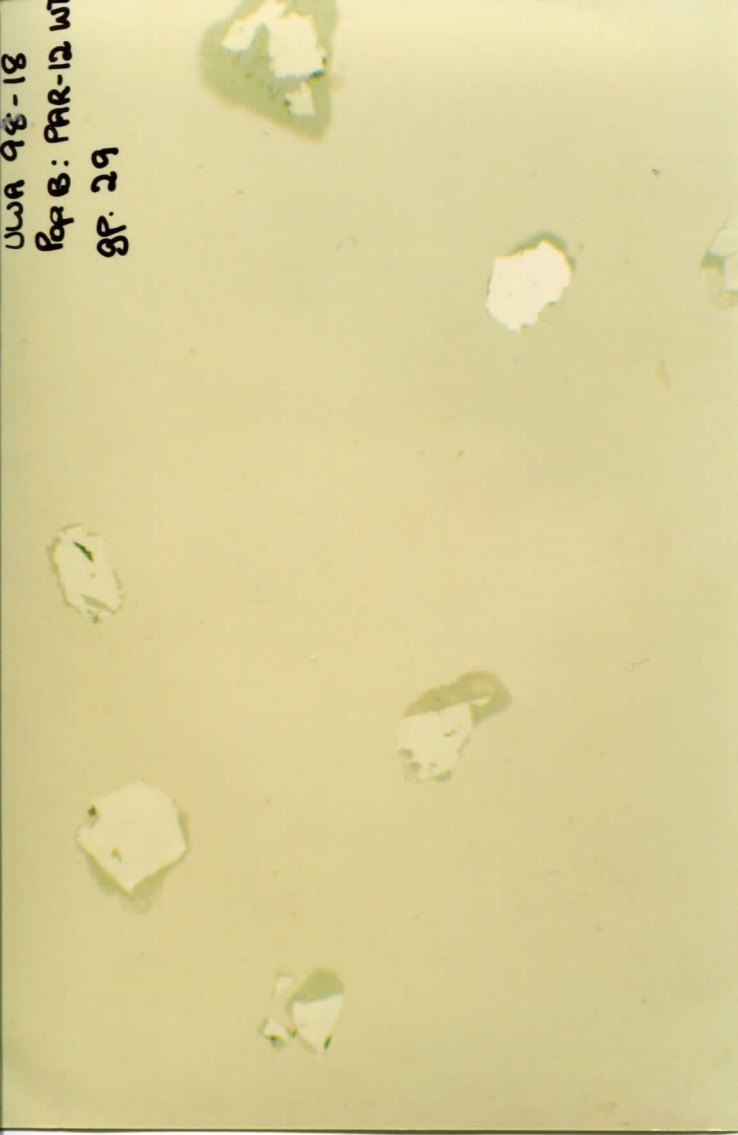
SEM ✓



98188285, 6, C  
28/8/02



98188295, 6, C  
28/8/02



UWA 98-18  
Pop B: PAR-12 WT  
Cp 31

SEM ✓  
216-1  
216-1  
216-1  
9818b27s,6

#326  
SN!

#426

#416

#406

UWA 98-18  
Pop B: PAR-12 WT  
Cp 32

#426

#416

#406

bright  
matrix

#456, r, s

#446, s

qtz

qtz  
qtz

qtz



UWA 98-18  
Pop B: PAR-12.WT

cp 33

#46b

#52b

#51b

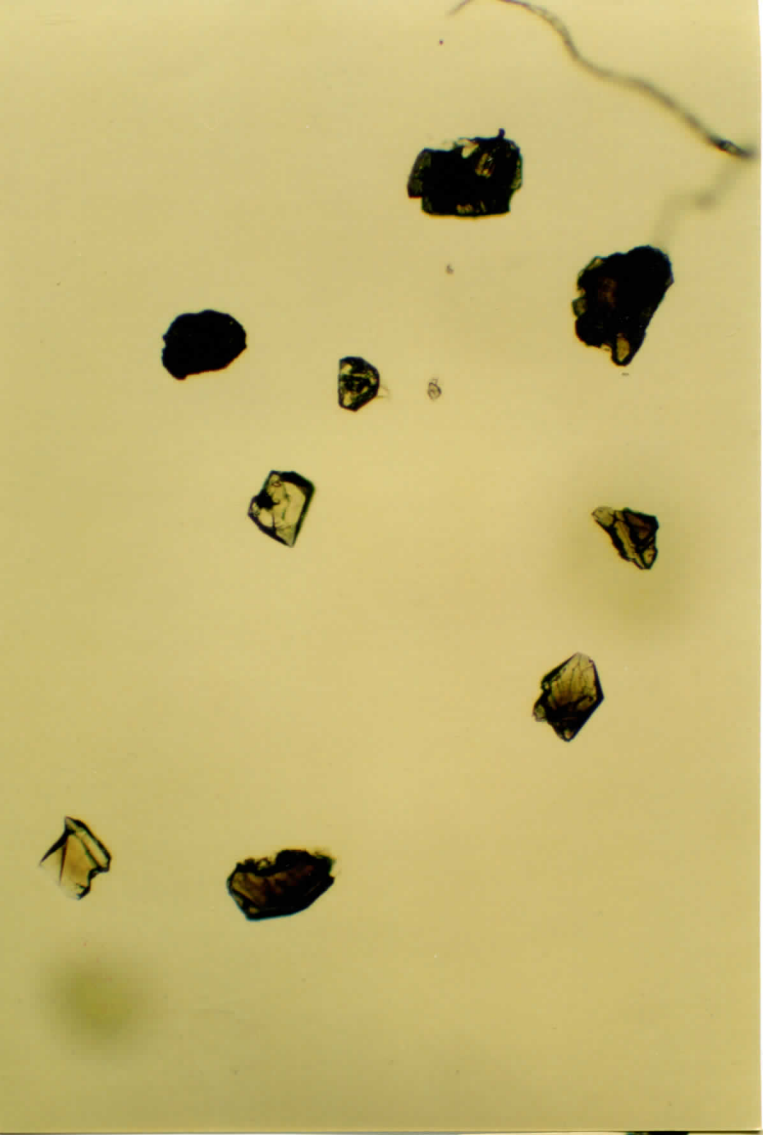
#47b

#48b, s

#49b

#50b, s

Red-like inclusion  
 + bright inclusion next to red = SiZr FeMg  
 Si  
 Fe  
 Mg  
 Al  
 Pt?



UWA 98-18  
Pop B: PAR-12.WT

cp 34

#36b

#35b, s

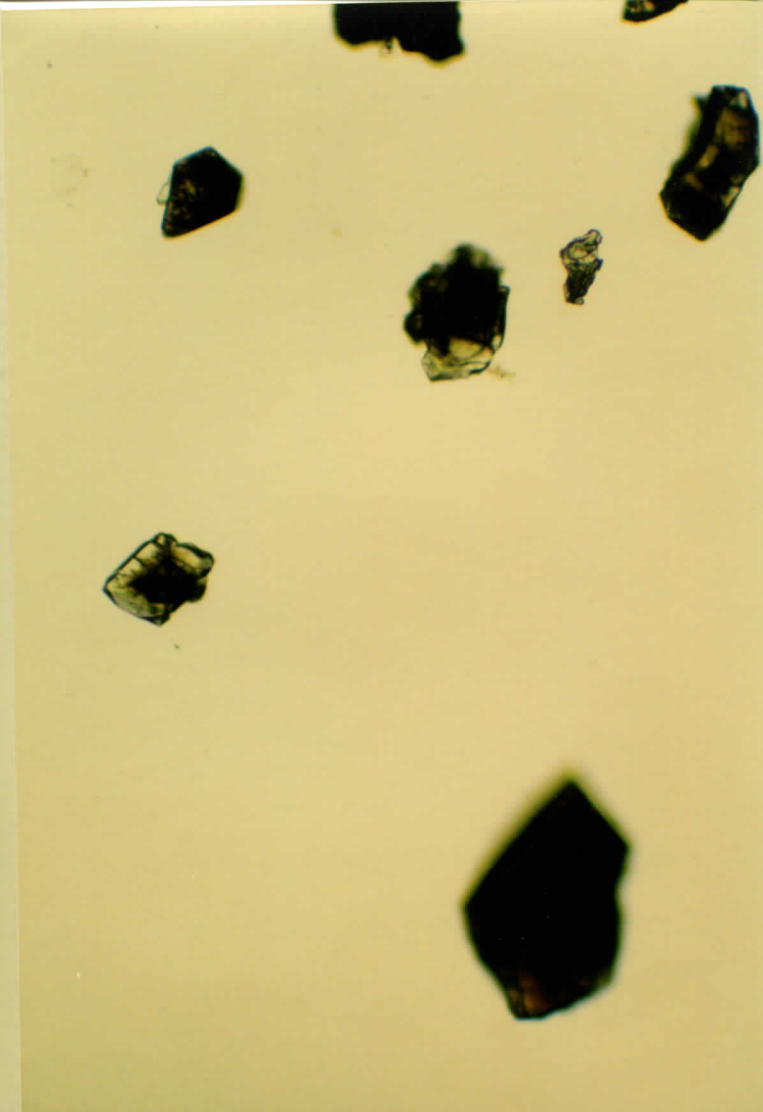
#53b

#2

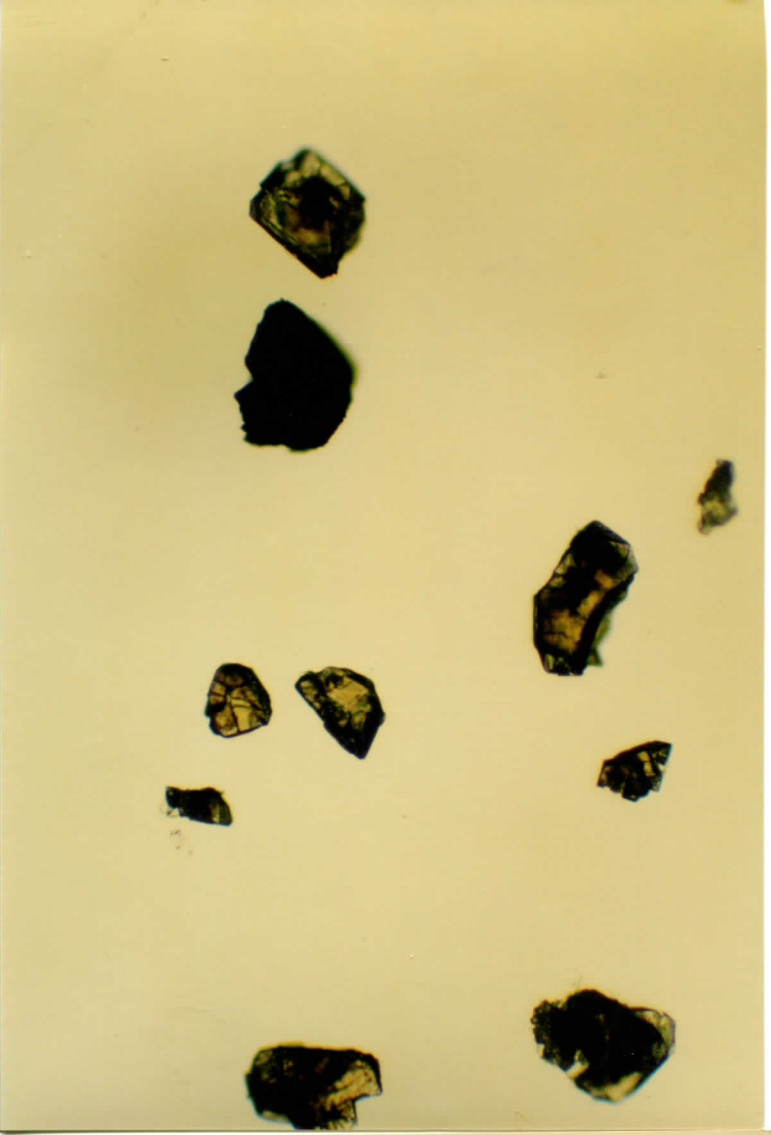
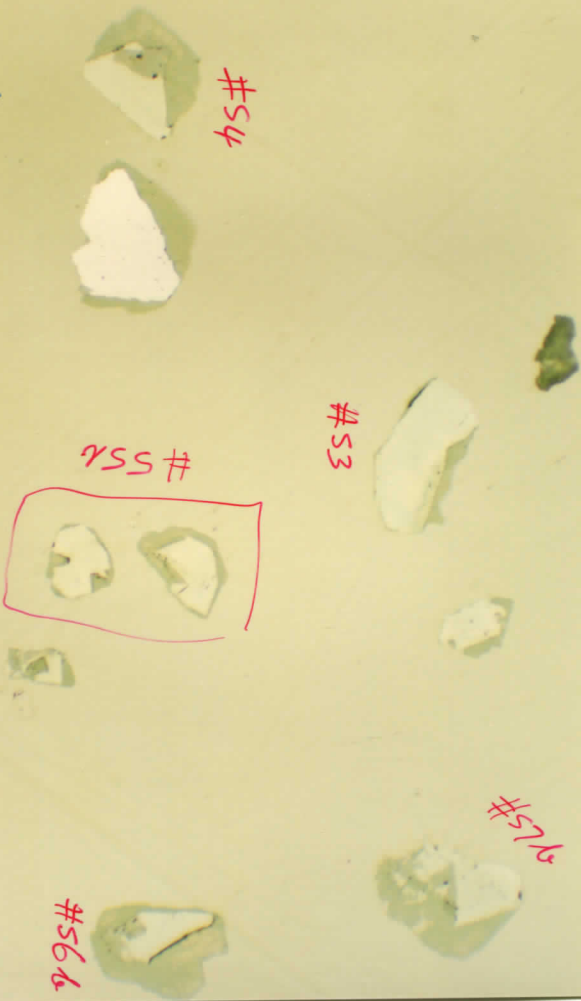
qtz + monaz  
 v. bright = Au.

Las ICPMS

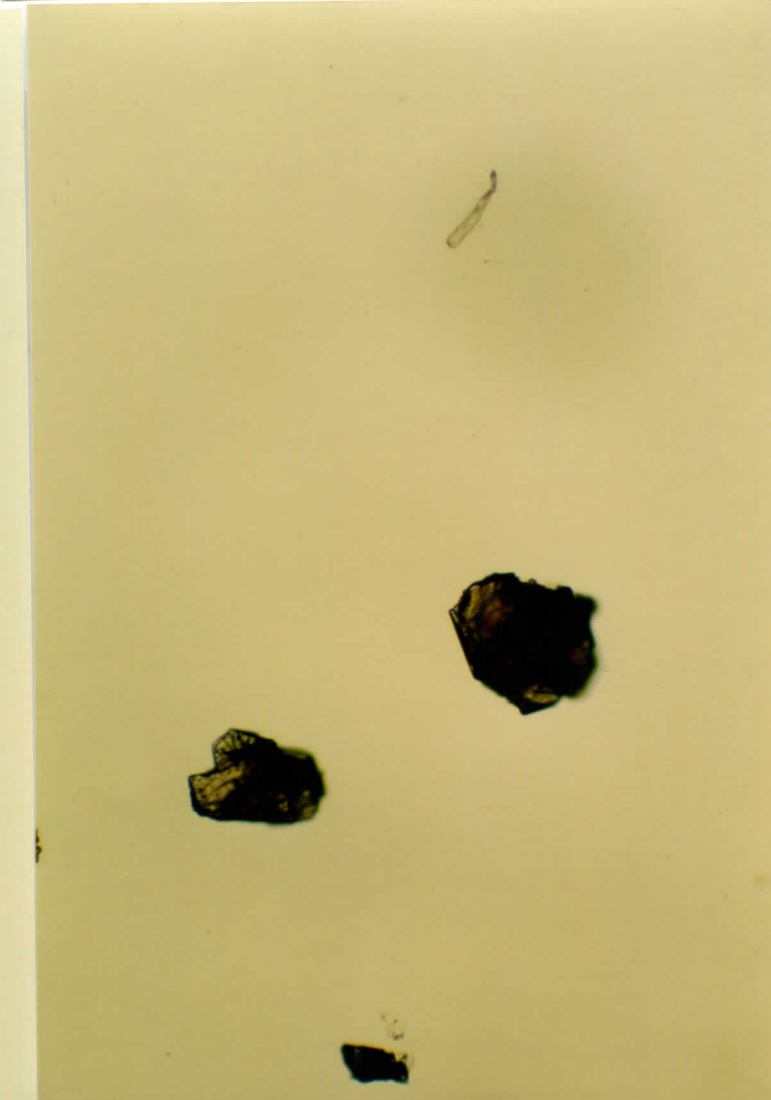
SEM



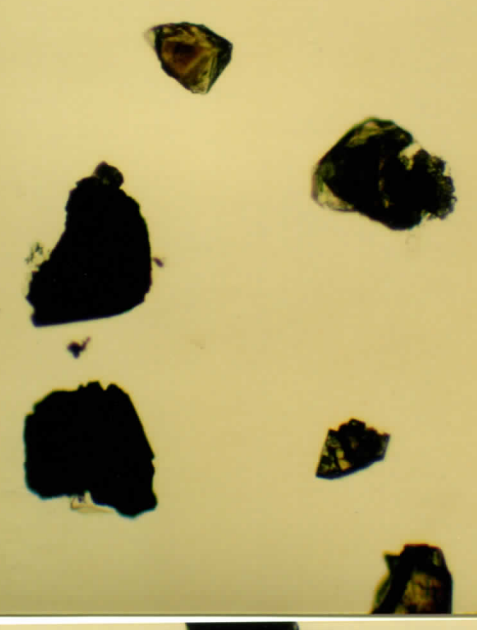
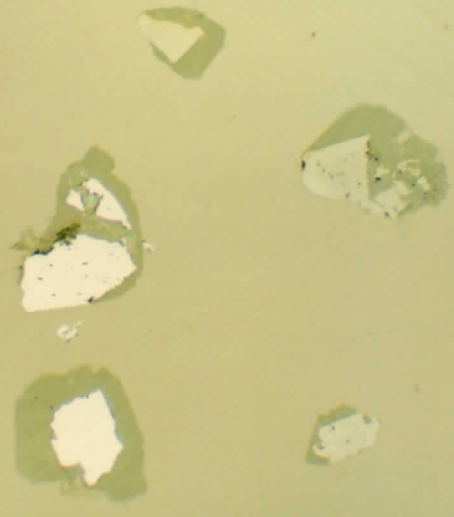
UWA 98-18  
Pop B: PAR 12 - WT  
Gp 35



UWA 98-18  
Pop B: PAR-12 WT  
Gp 36



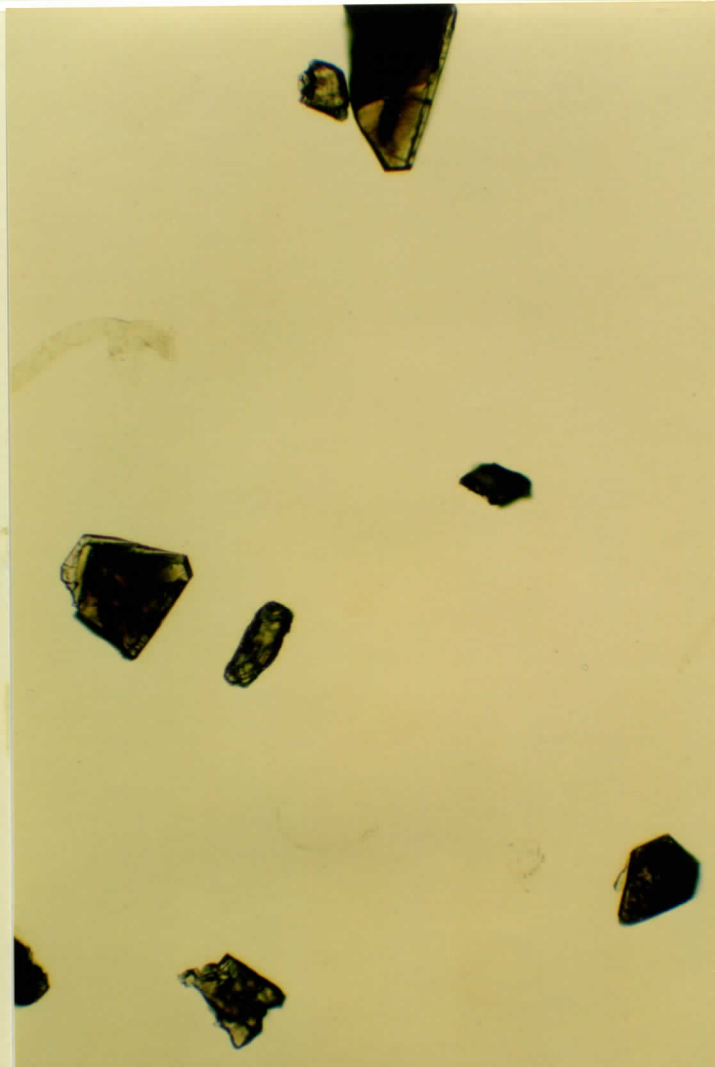
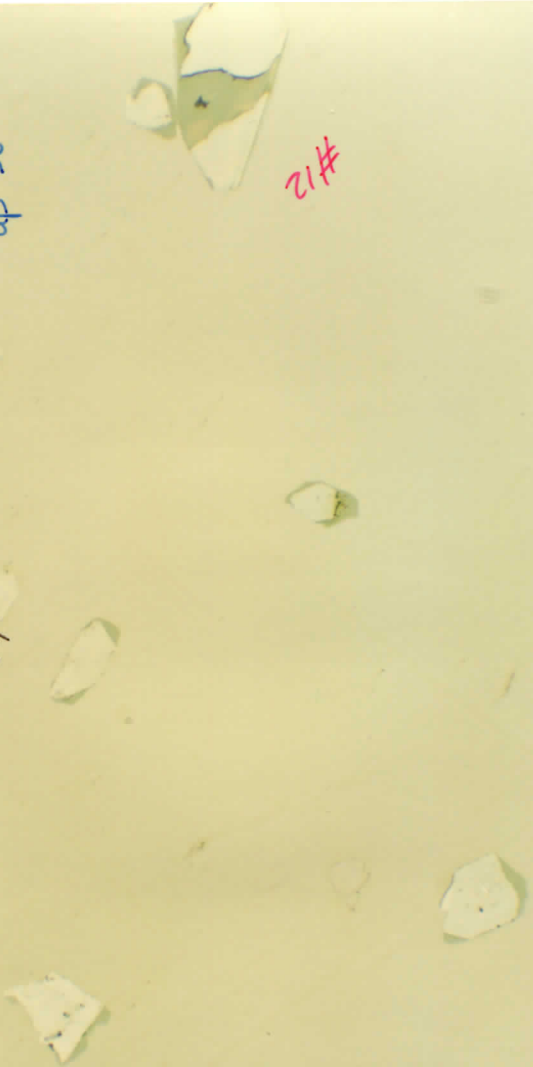
UWA 98-18  
Pop B: PAR-12-WT  
4p 37



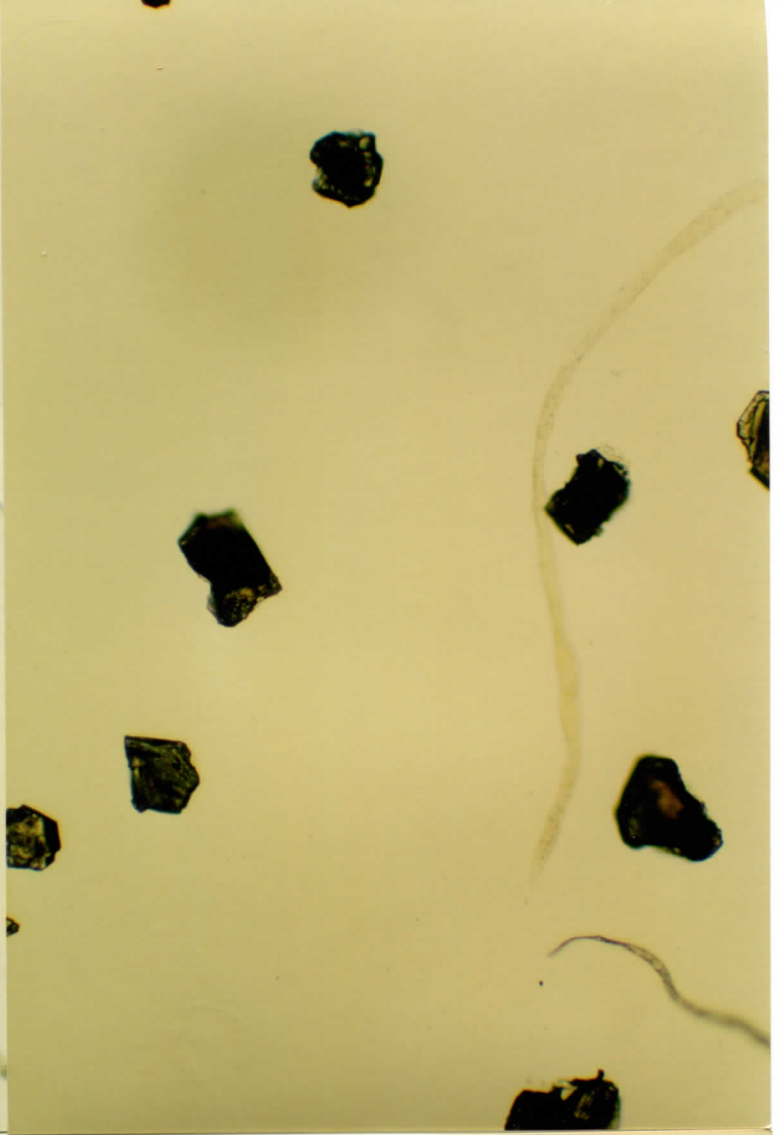
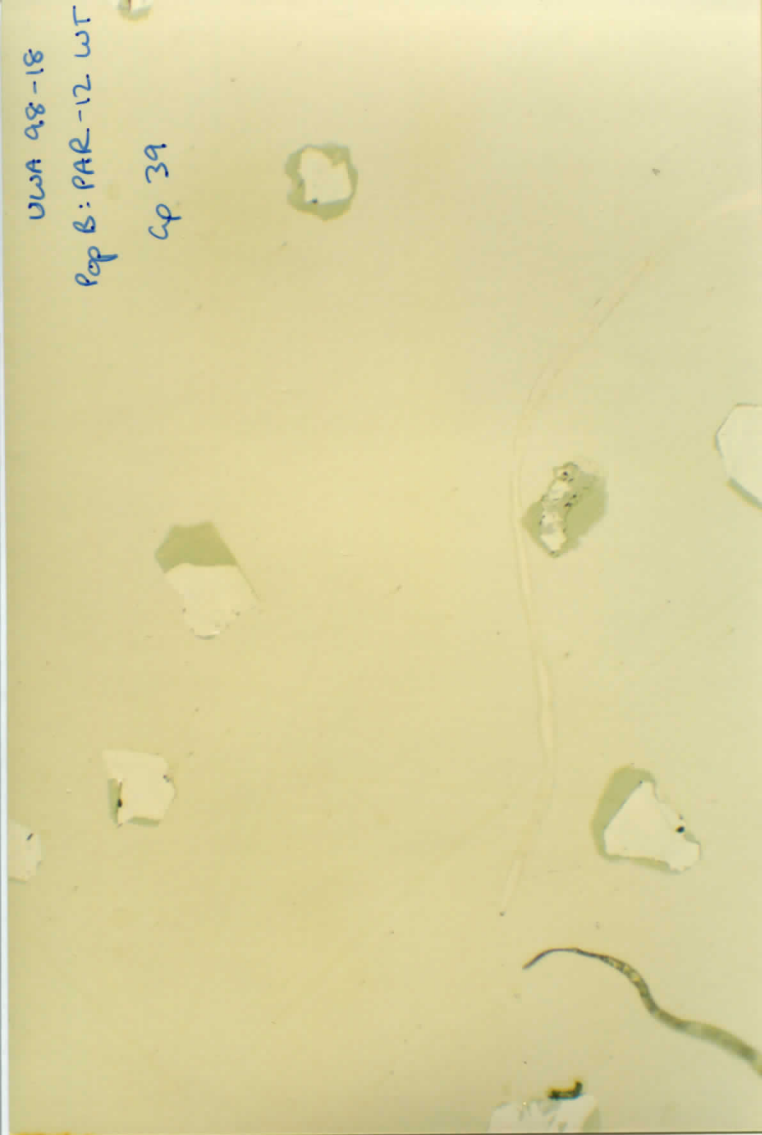
UWA 98-18  
Pop B: PAR-12-WT  
4p 38

8/2-81  
6/19/99  
13-1

#12

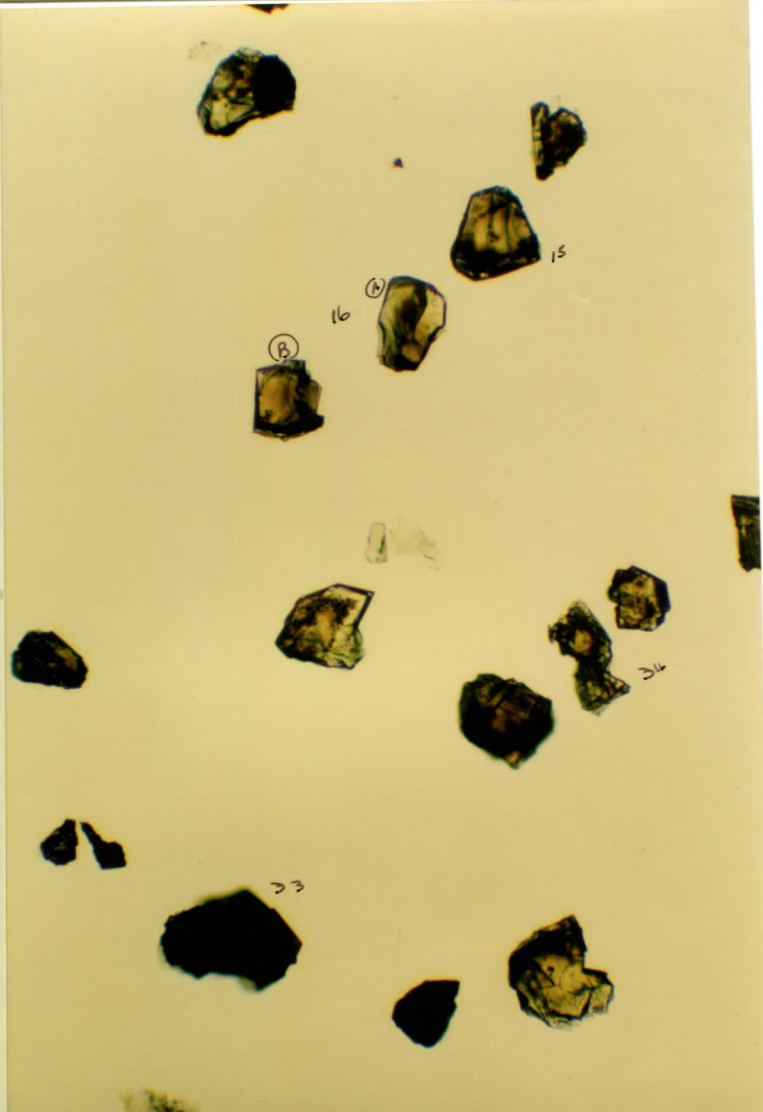
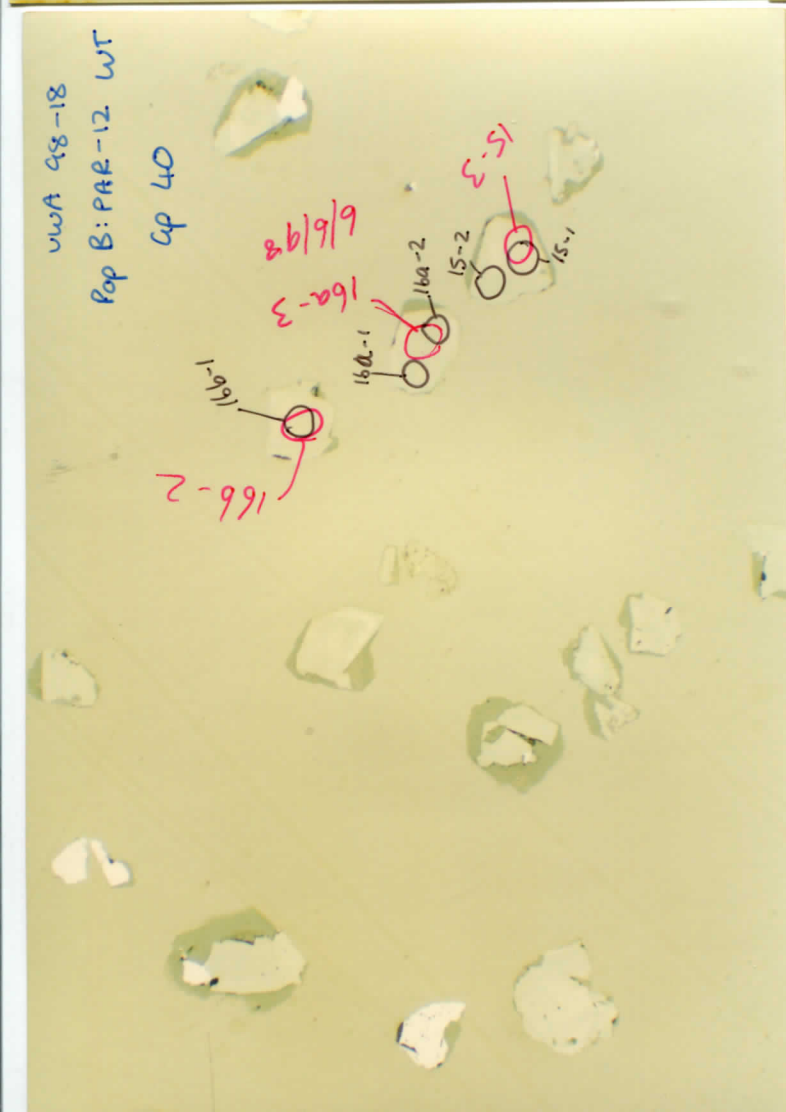


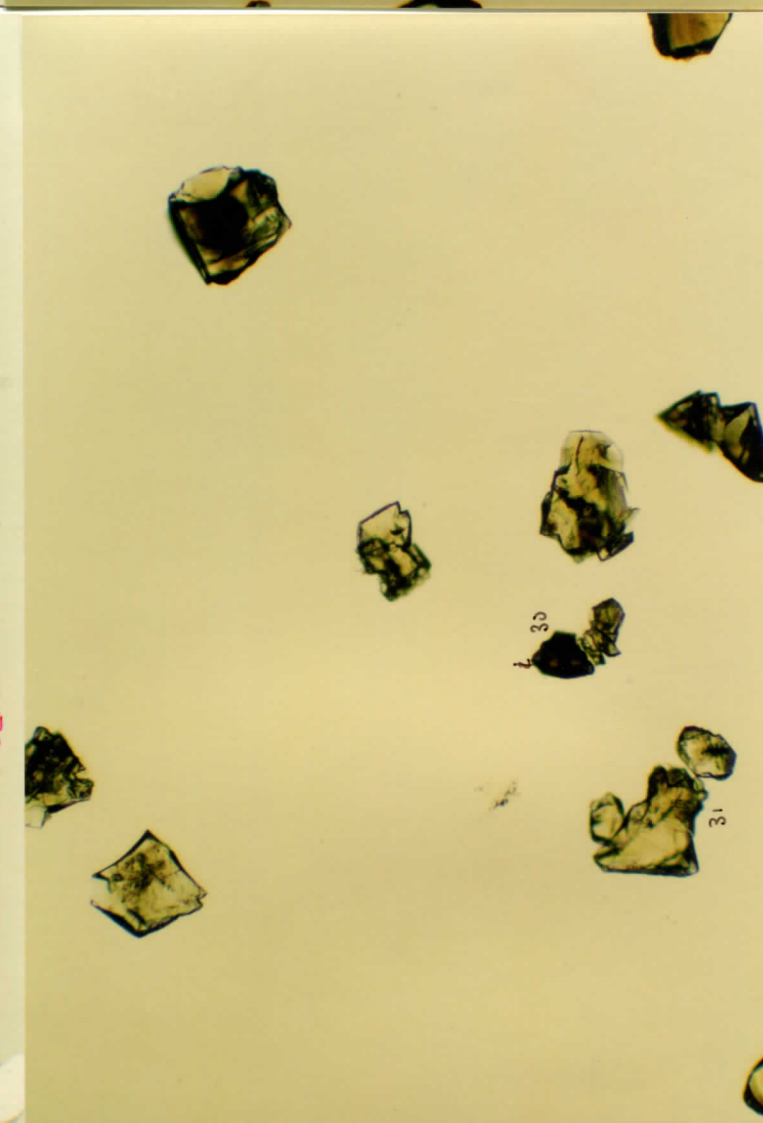
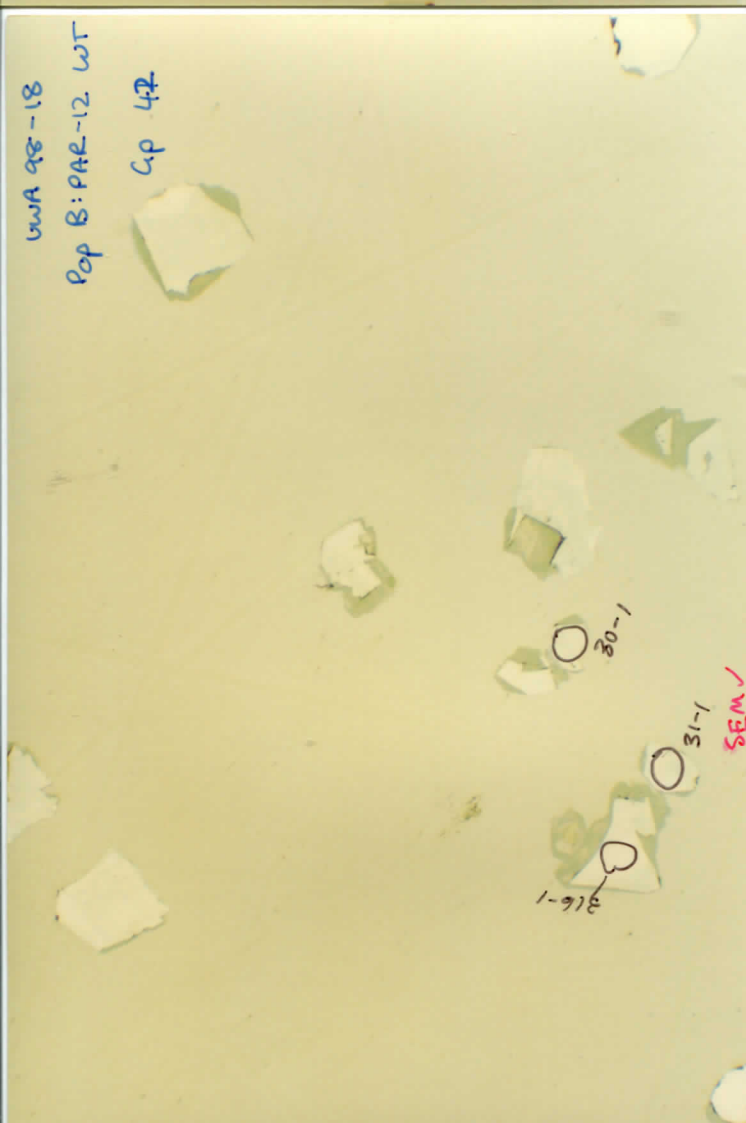
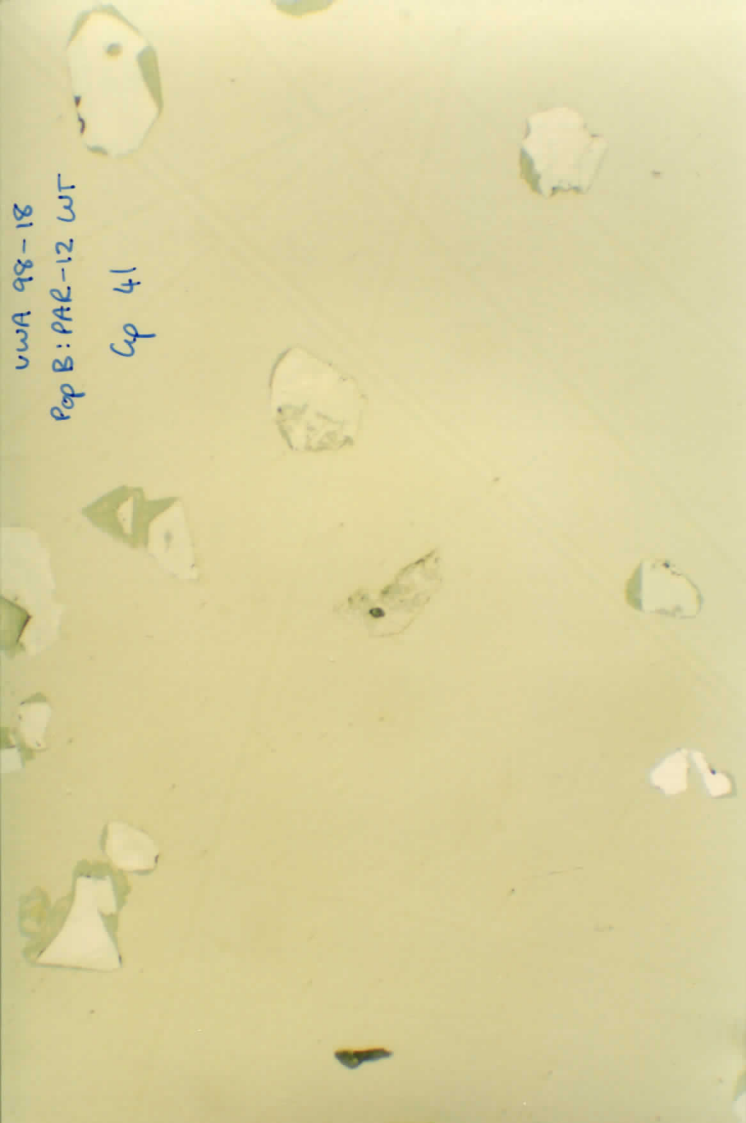
UWA 98-18  
Pop B: PAR-12 WT  
cp 39



UWA 98-18  
Pop B: PAR-12 WT  
cp 40

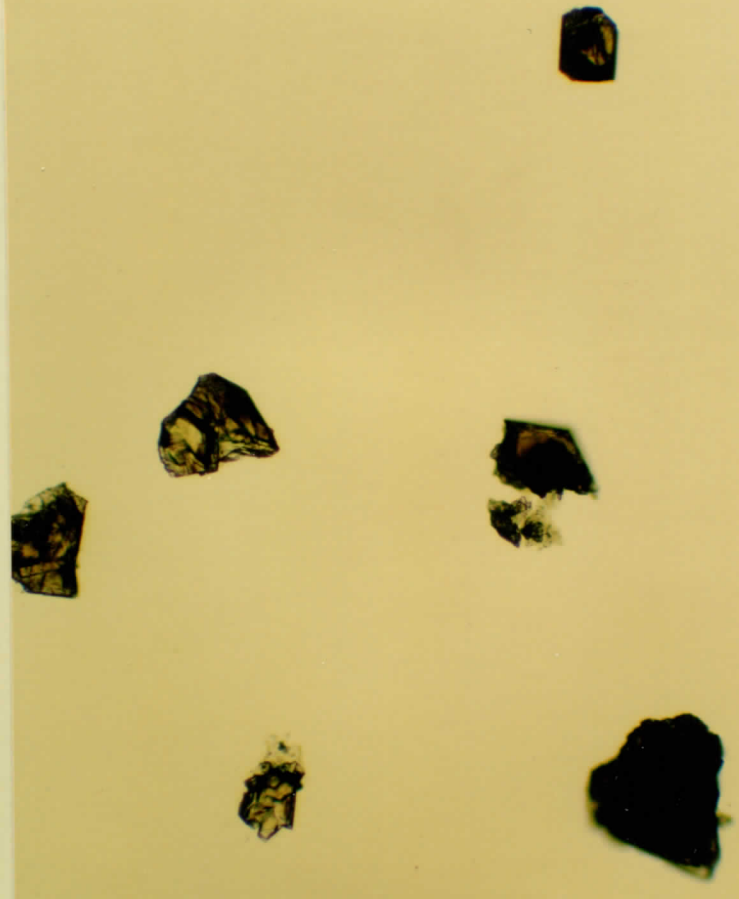
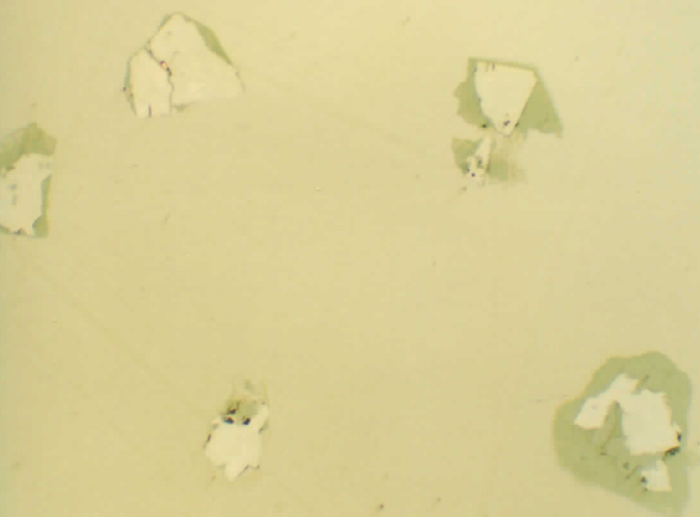
Handwritten labels in red ink:  
166-2  
166-1  
16a-3  
6/6/98  
16a-1  
16a-2  
15-2  
15-3  
15-1



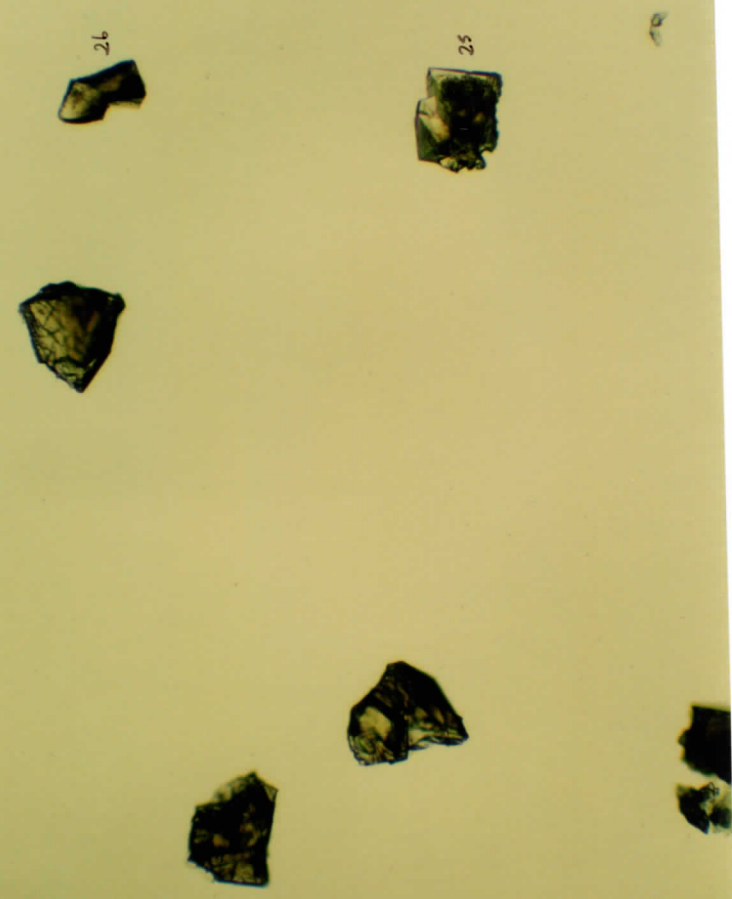
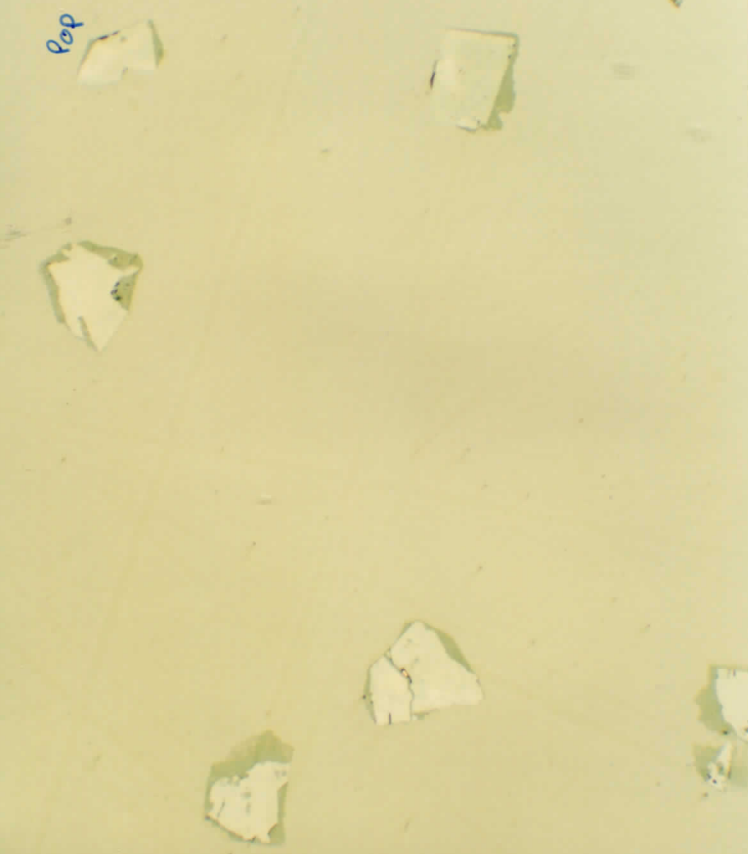


UWA 98-18  
Pop B: PAR-12 WT  
Sp 43

SEM ✓

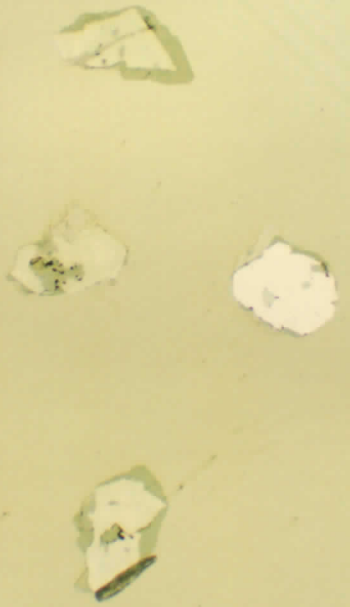


UWA 98-18  
Pop B: PAR-12 WT  
Sp 44

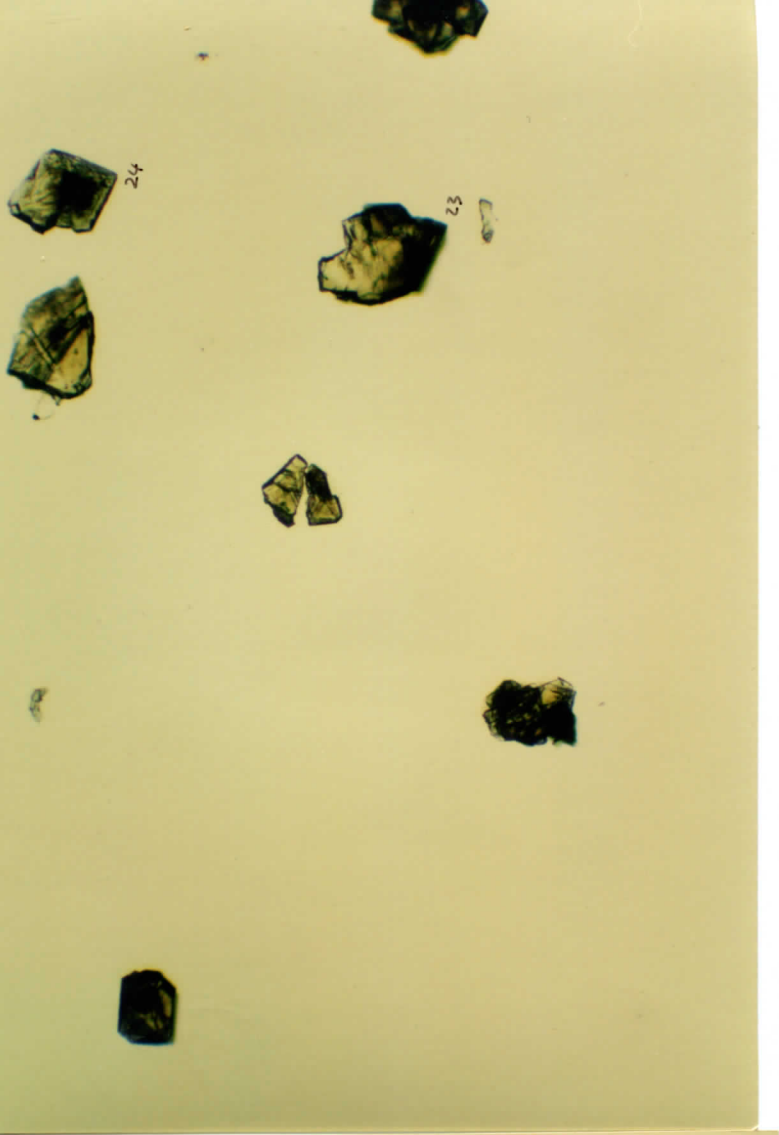
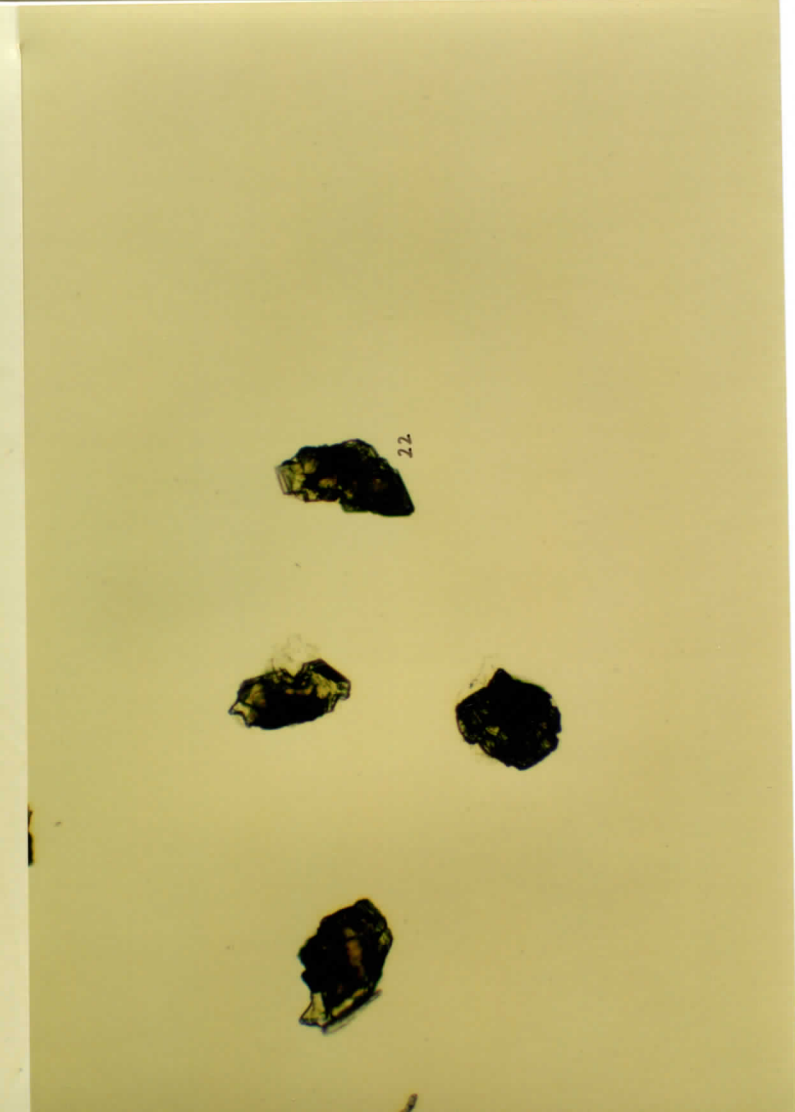
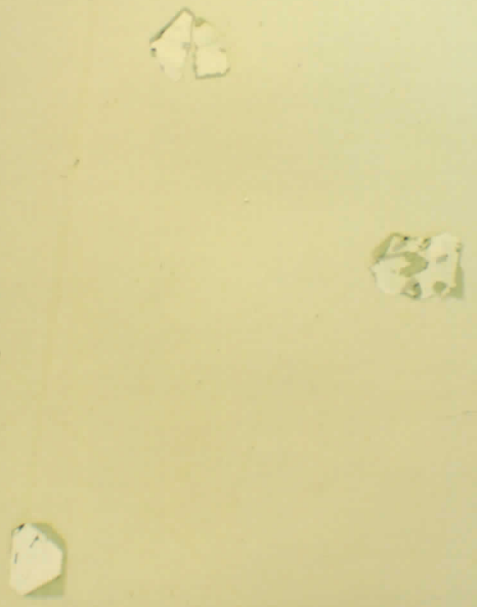




UWA 98-18  
Pop B: PAR 12-WT  
Cp 46



UWA 98-18  
Pop B: PAR-12 WT  
Cp 45

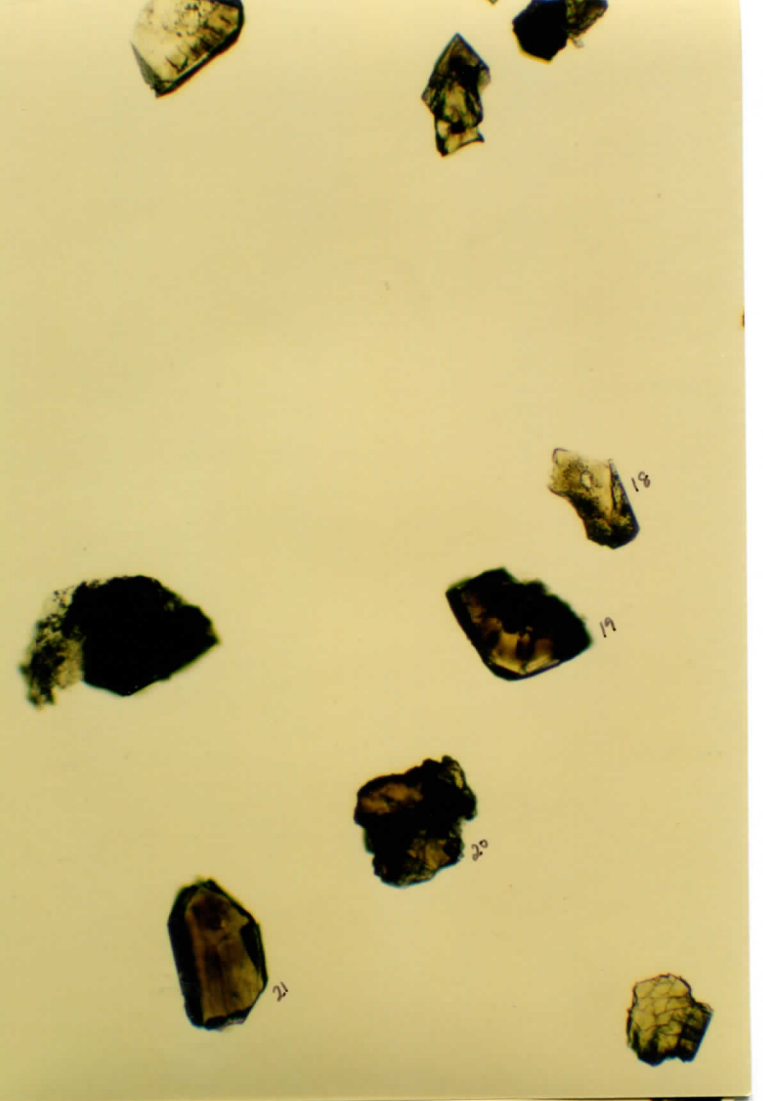
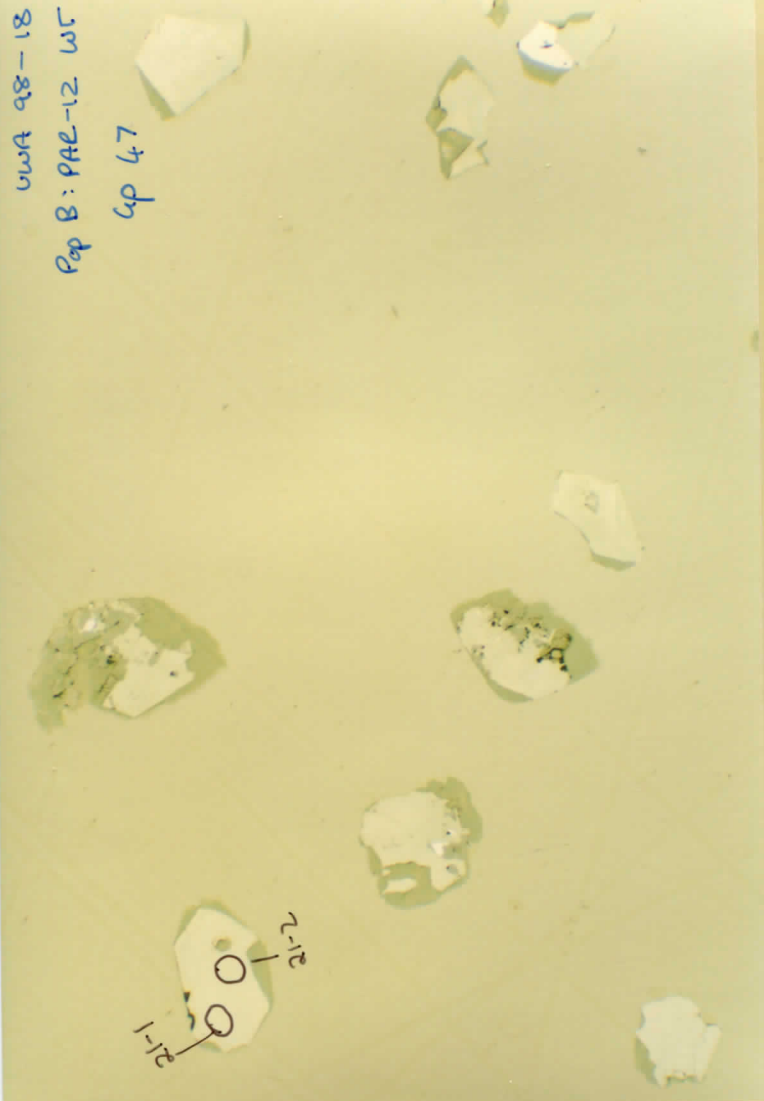


22

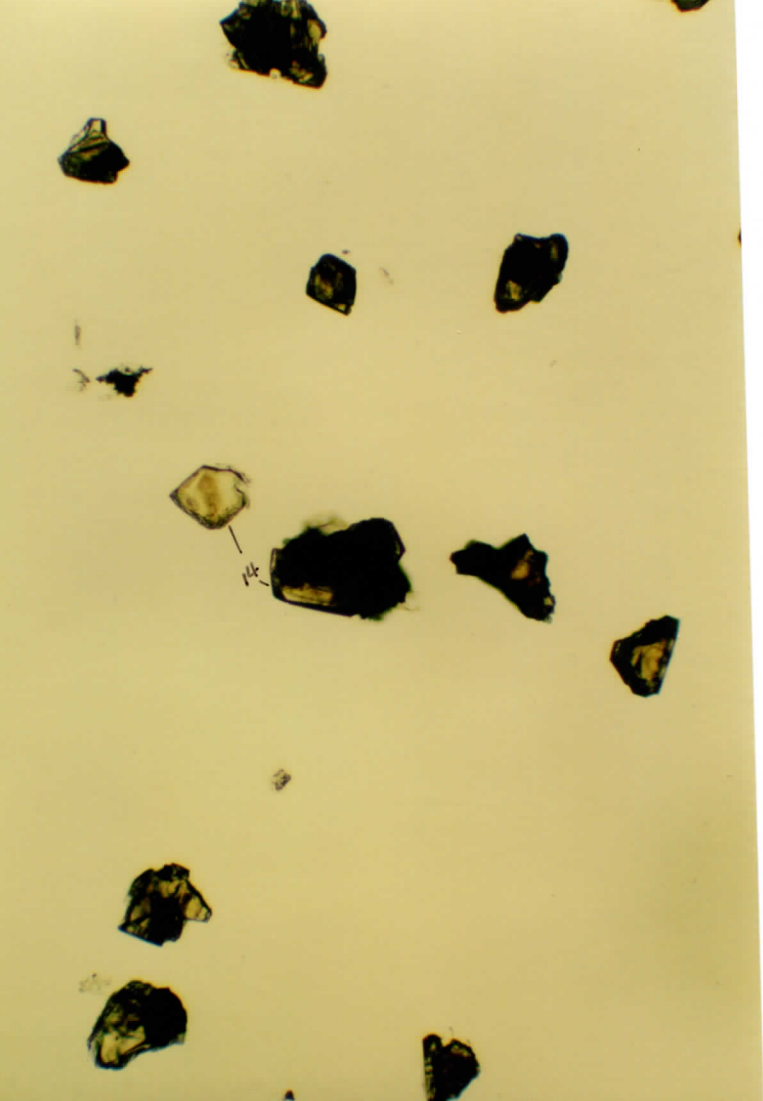
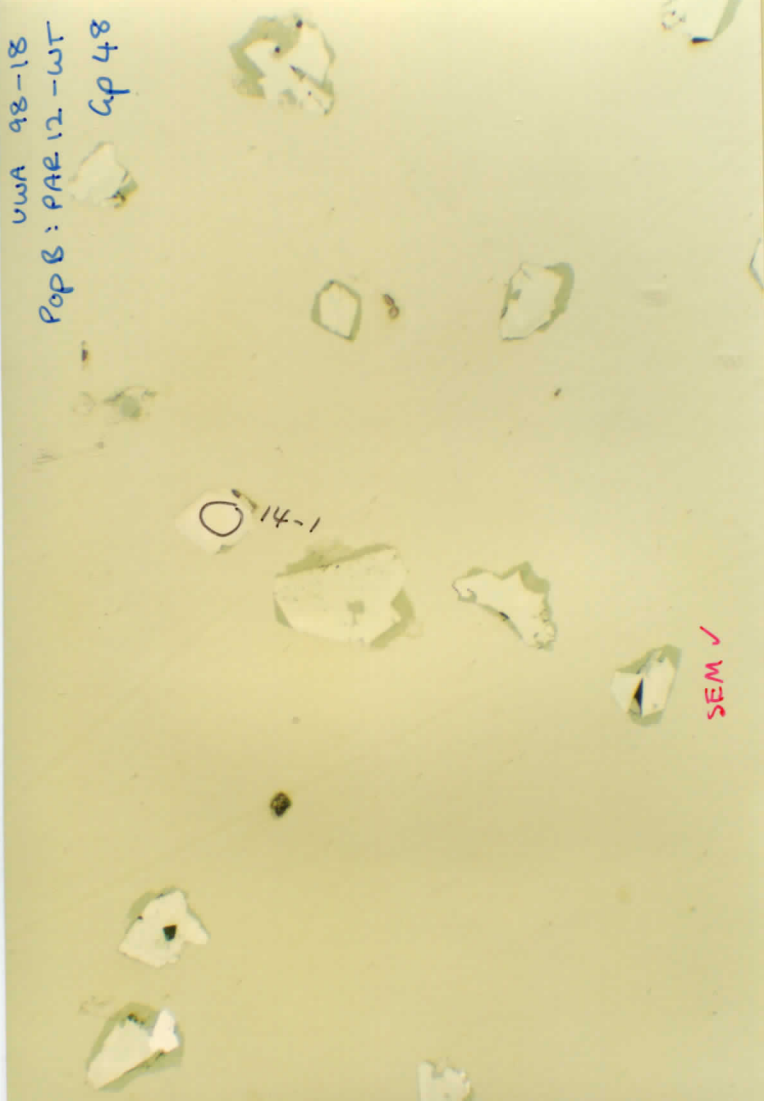
24

23

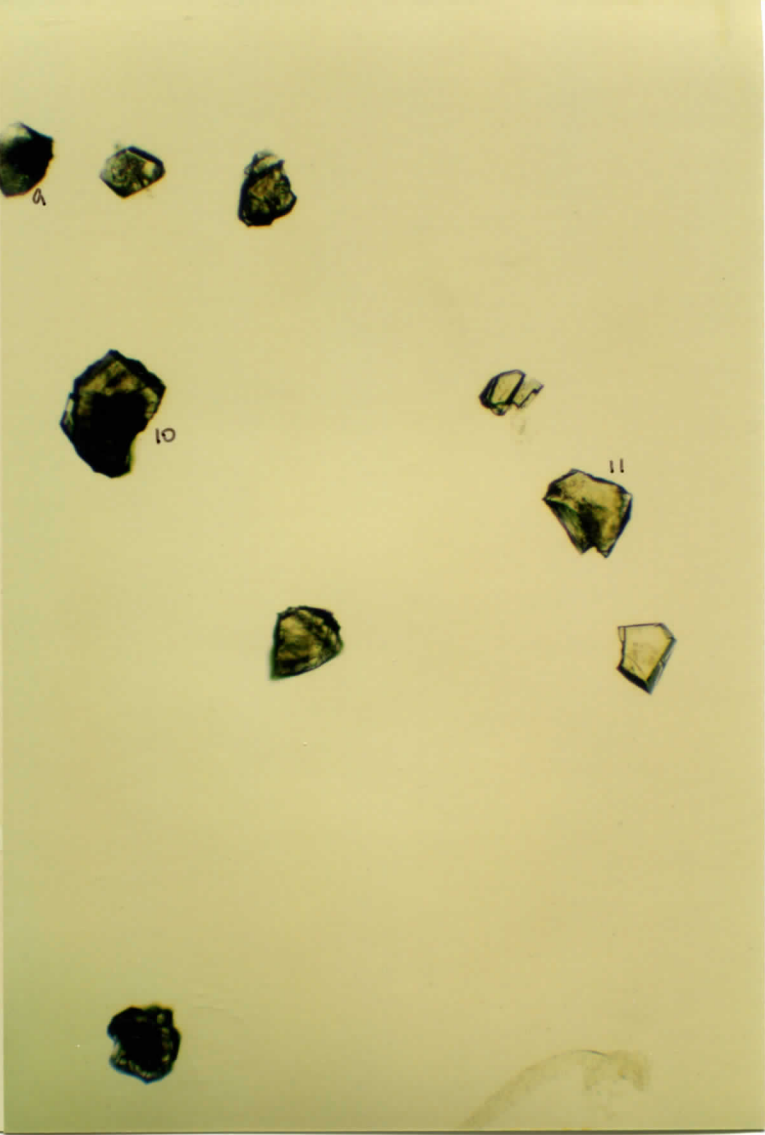
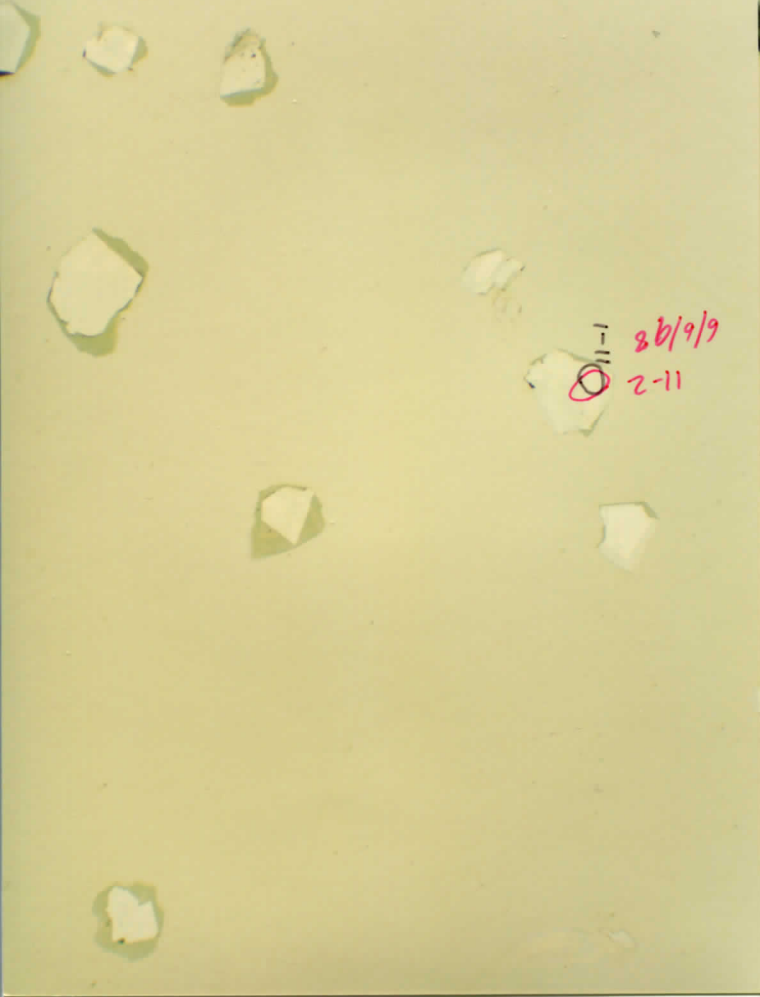
UWA 98-18  
Pop B: PAE-12 WT  
Cp 47



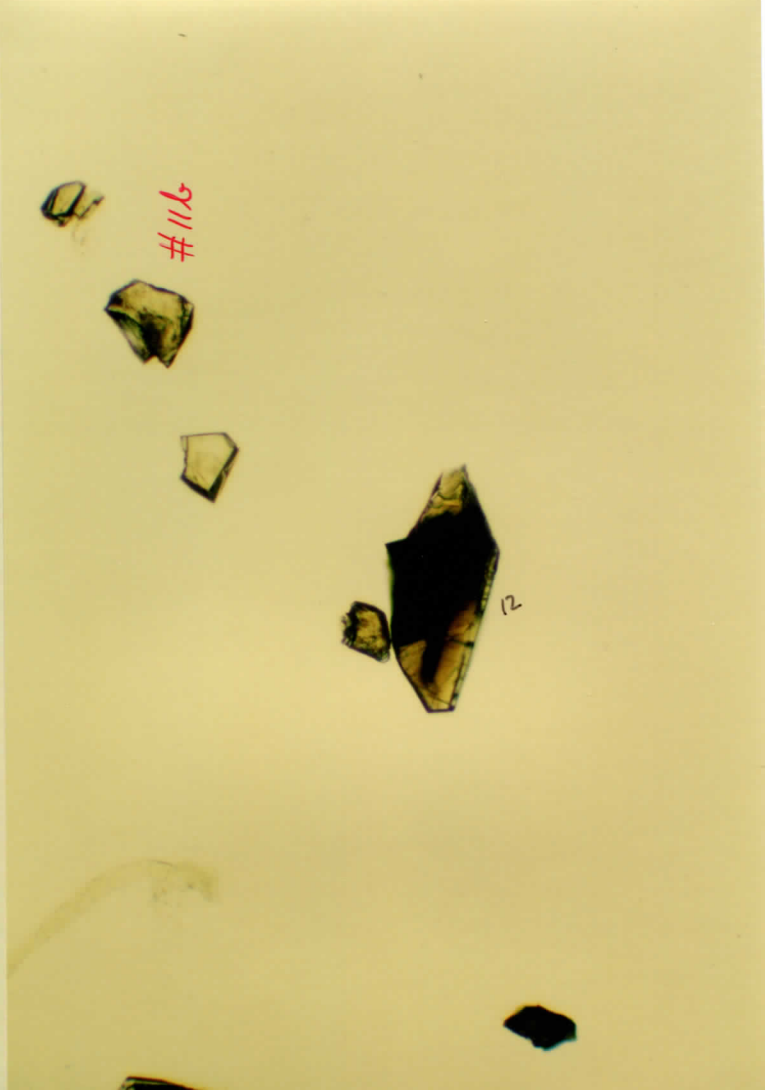
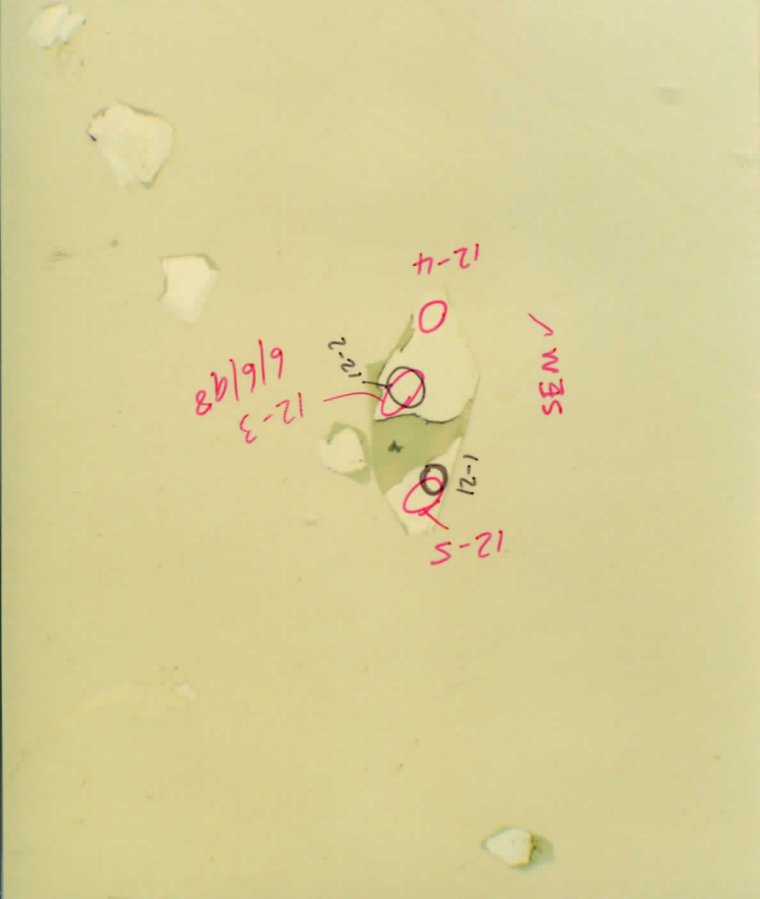
UWA 98-18  
Pop B: PAE-12 -WT  
Cp 48



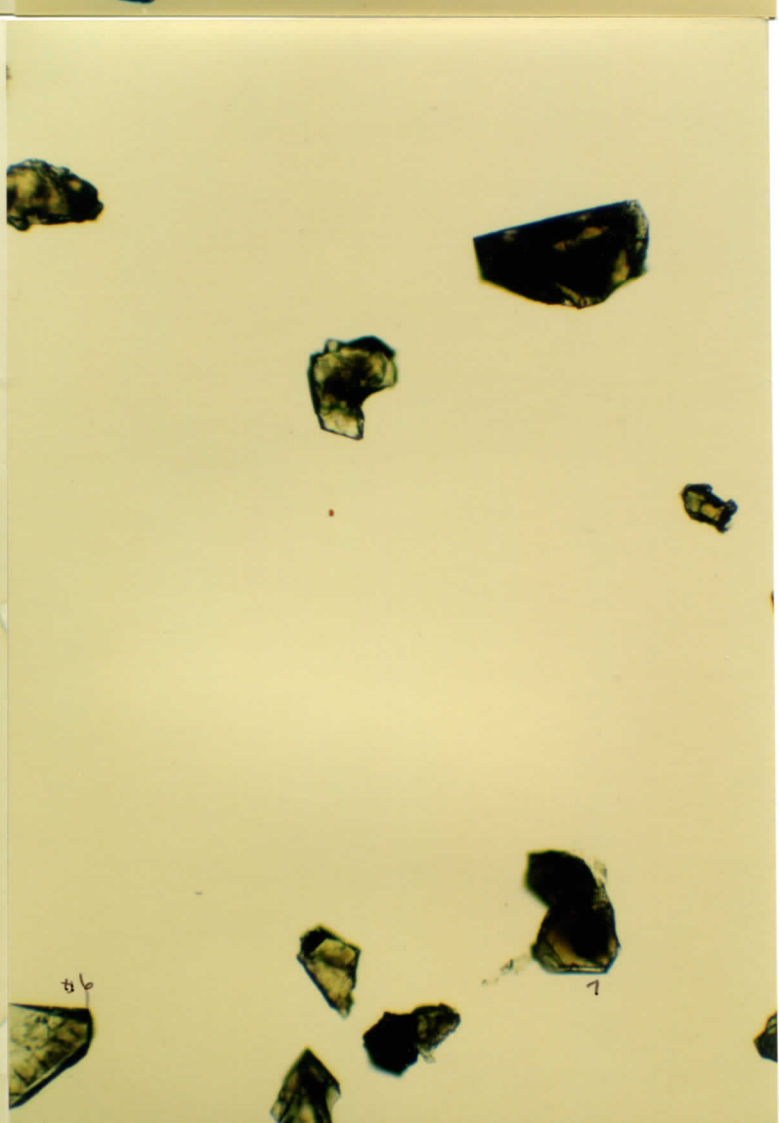
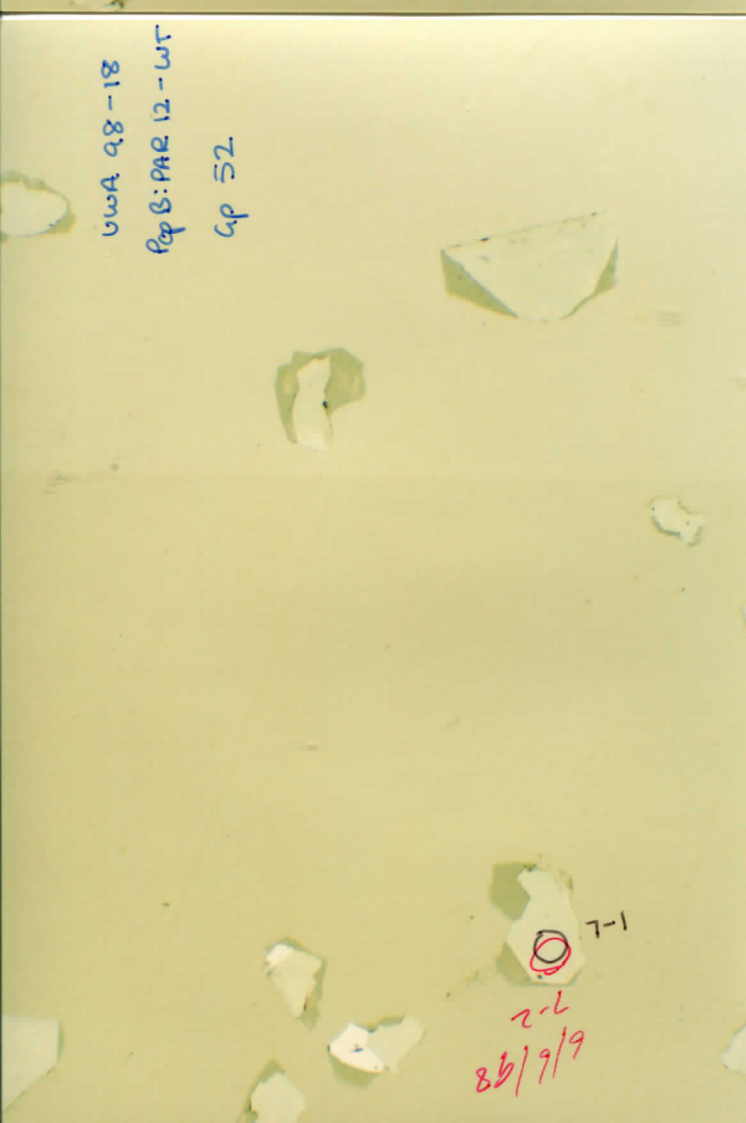
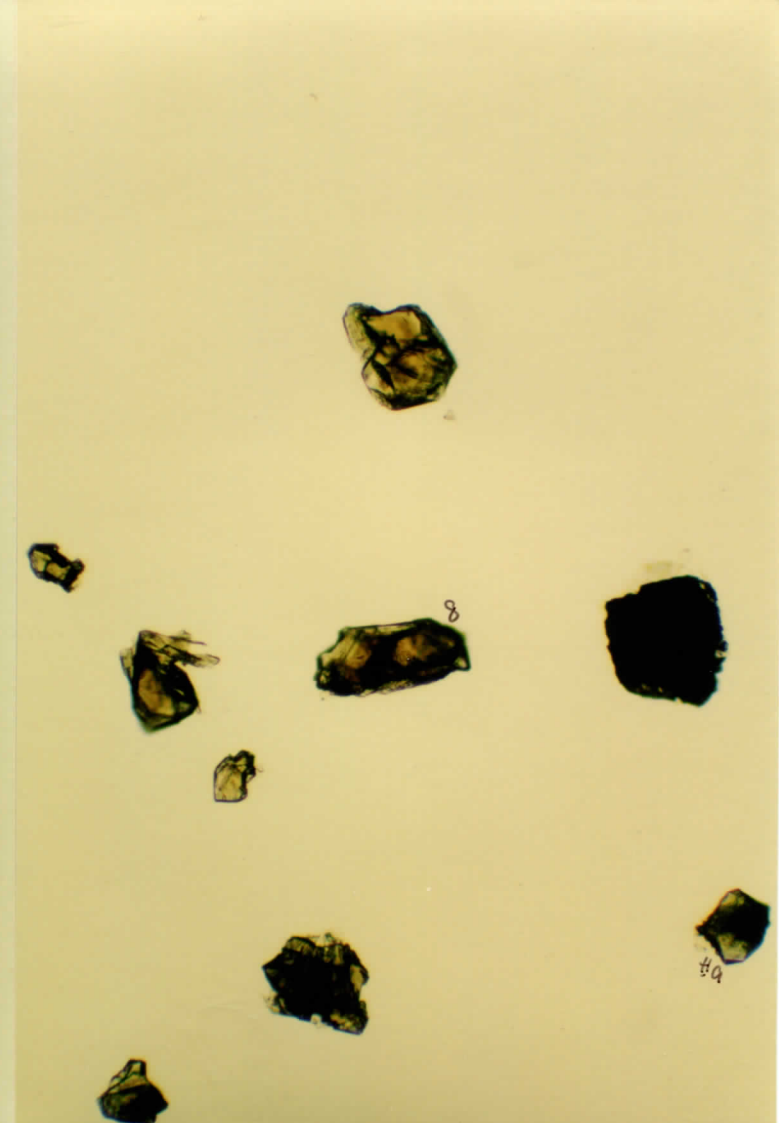
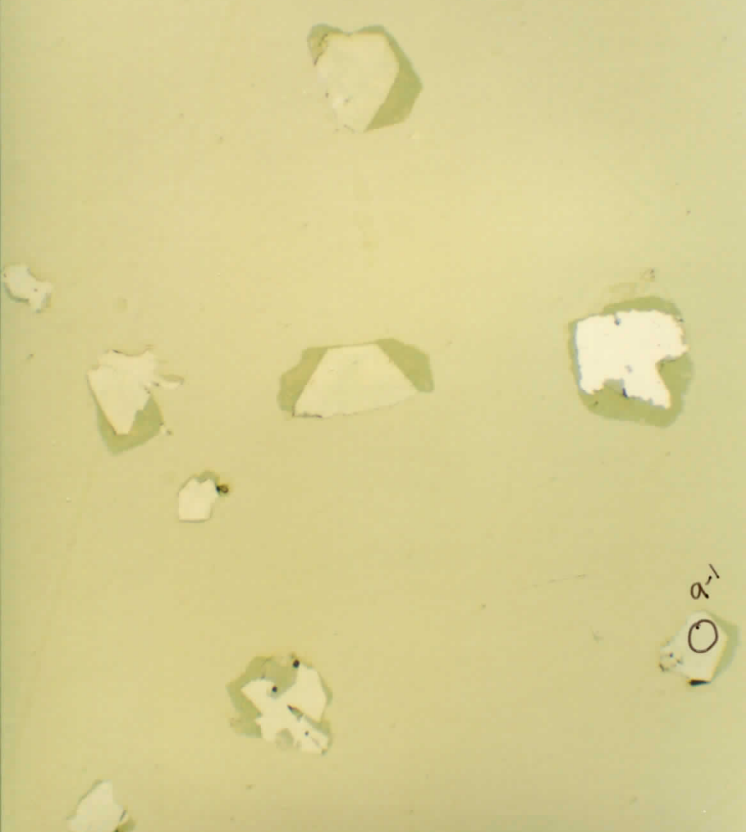
WVA  
98-18  
Pop B:  
PAR-12 WT  
Cp 49



WVA 98-18  
Pop B:  
PAR-12 WT  
Cp 50



UWA 98-18  
Pop B: PAR 12-WT  
Gp 51



UWA 98-18  
Pop B: PAR. 12 - W

4p 53

059-1

58-3

58-1  
2-95

8/6/99

8/6/99

6-2

6-1

6-3

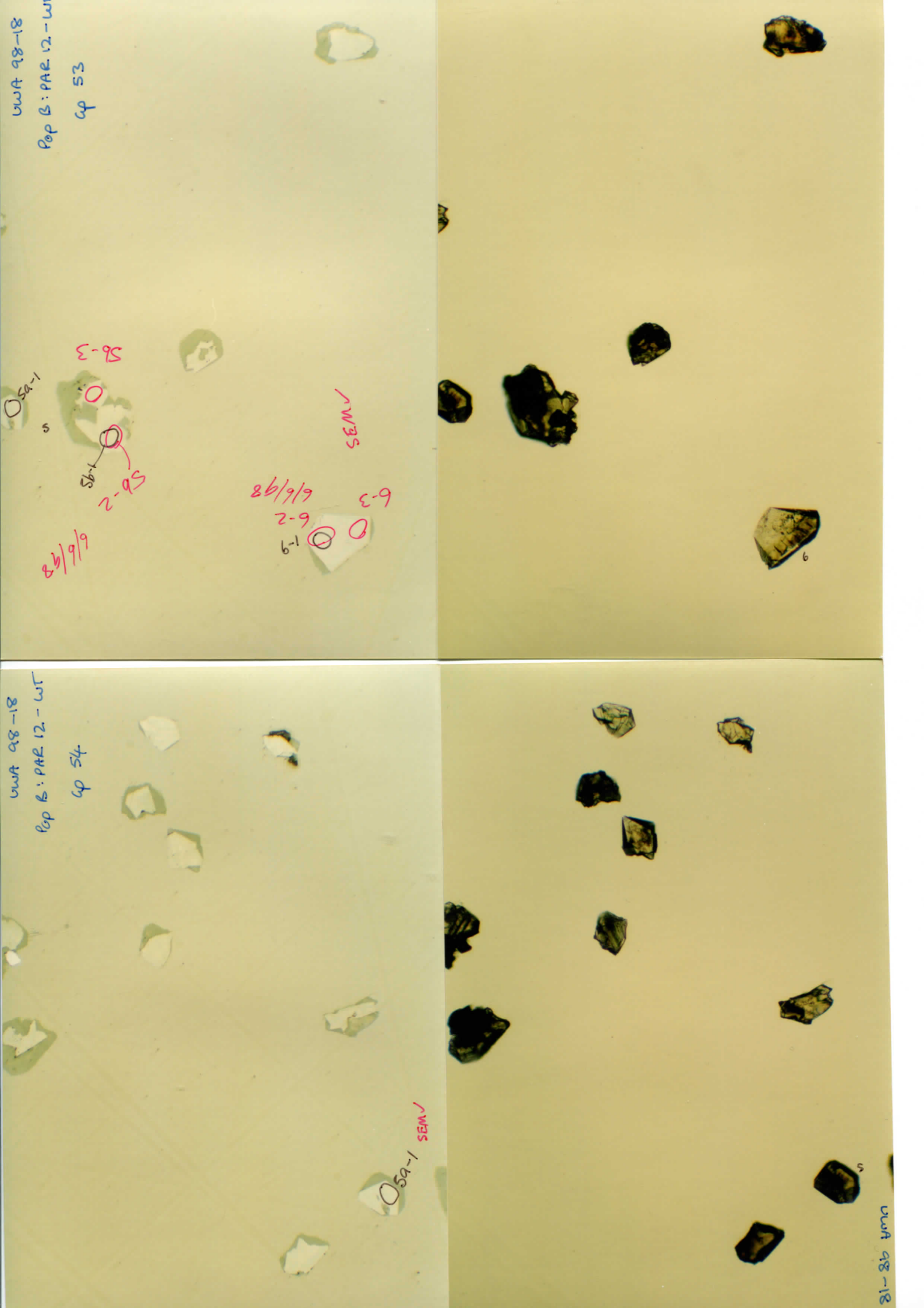
SEM ✓

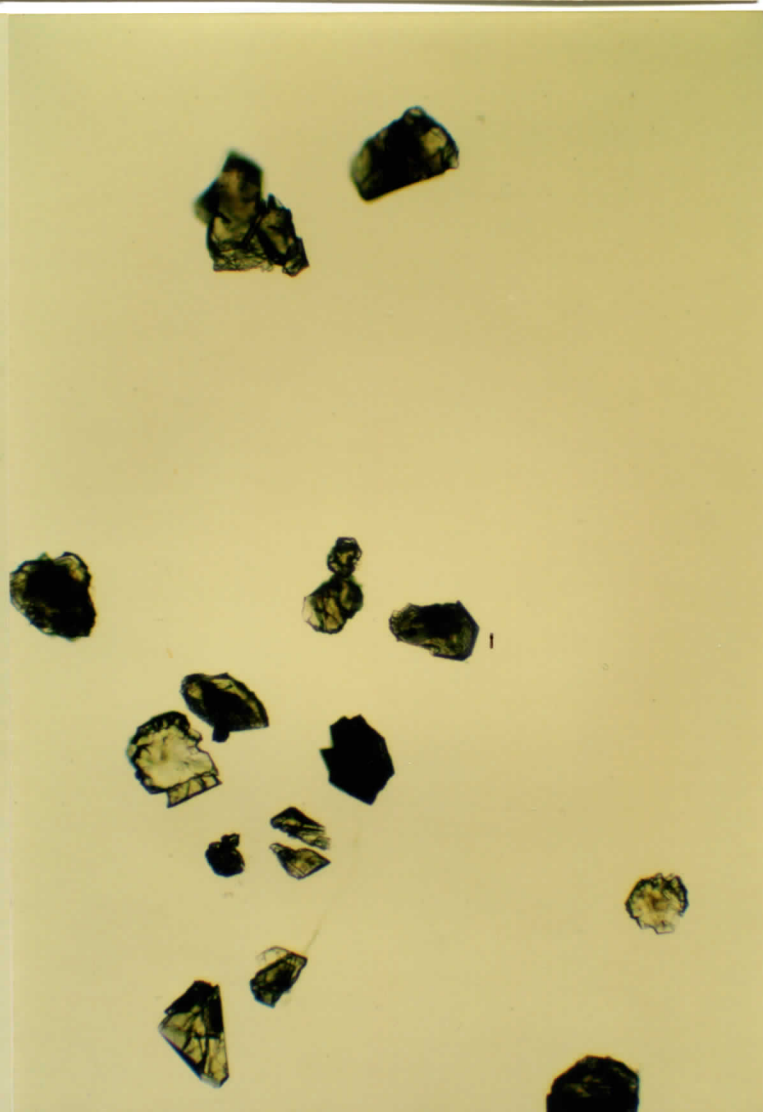
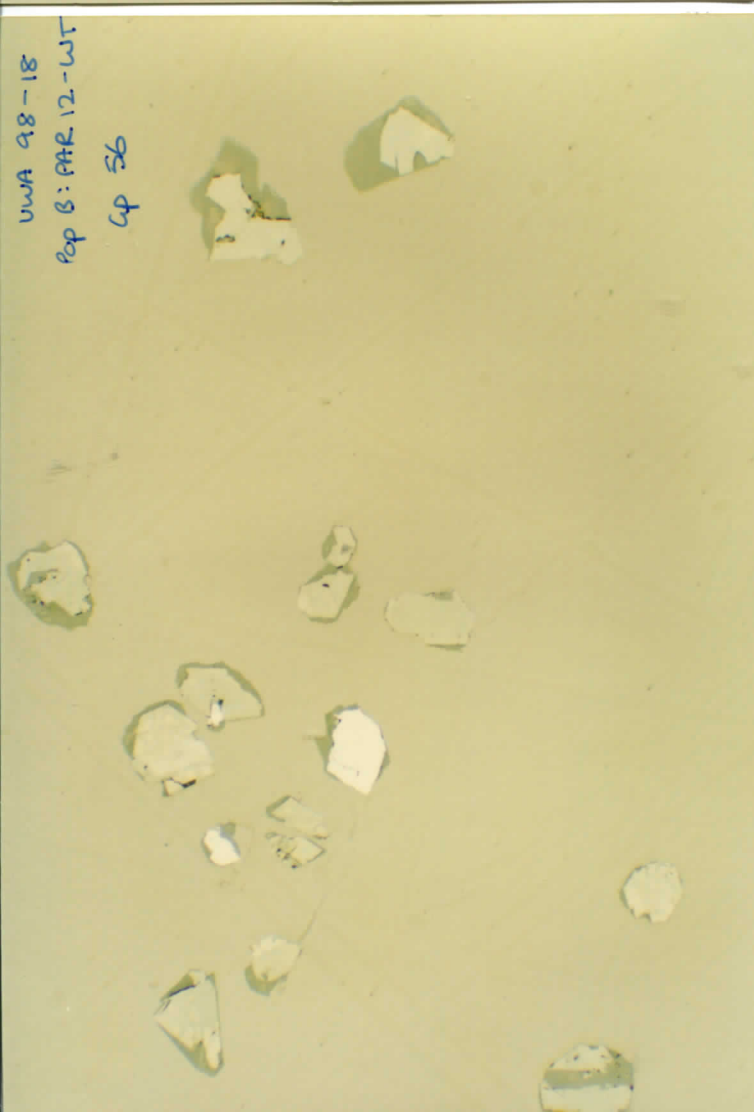
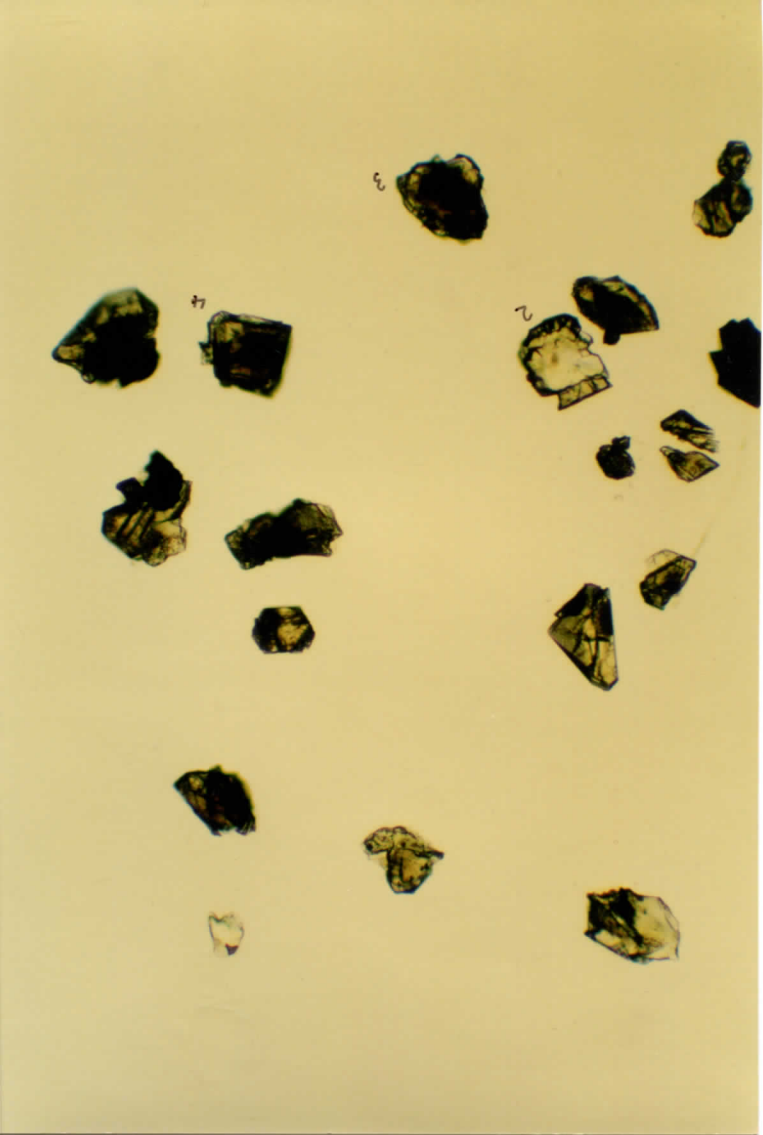
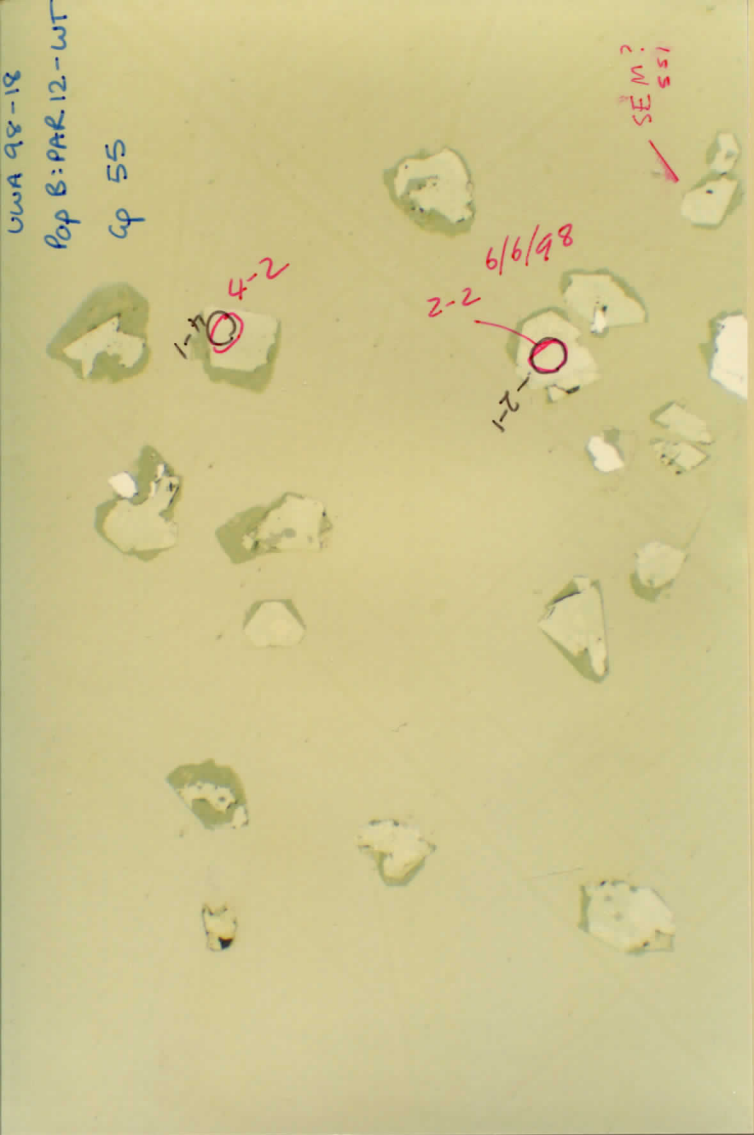
UWA 98-18  
Pop B: PAR. 12 - WT

4p 54

059-1 SEM ✓

UWA 98-18





GWA 98-18  
Pop B: PAR 12-WT  
Gp 57

SEM ✓

SEM ✓

~~SEM~~

