

UWA 98-39  
Pop C: BSZ-3  
Sp 34

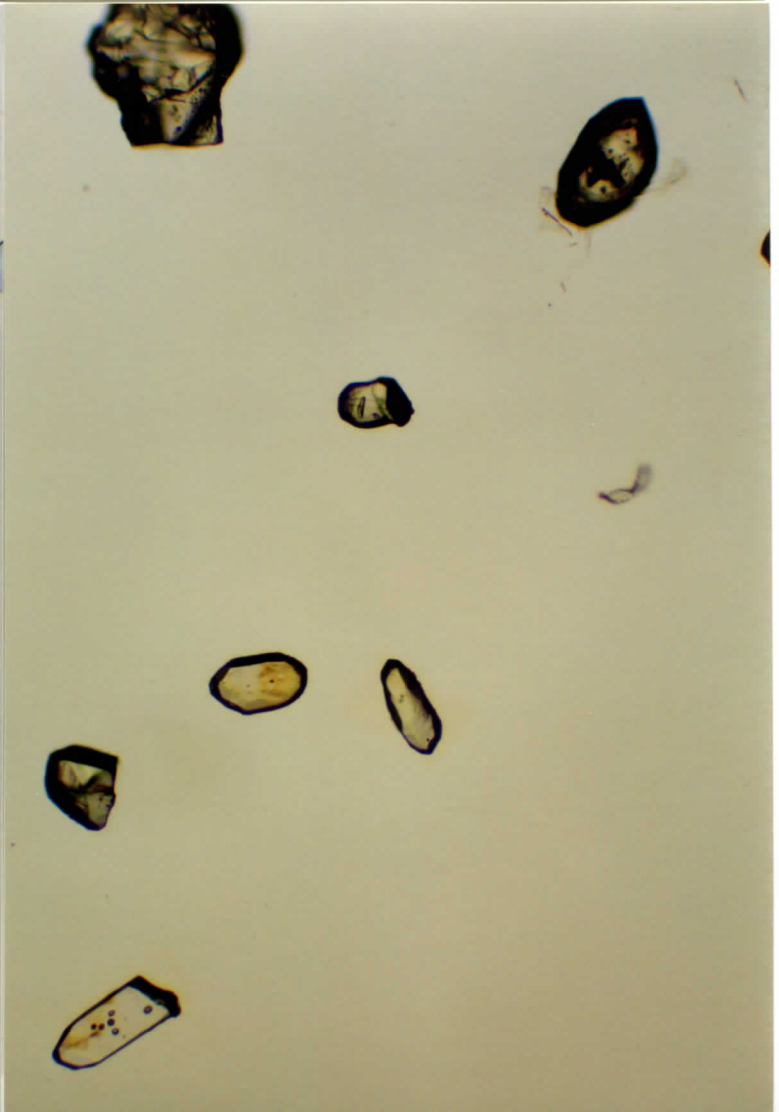
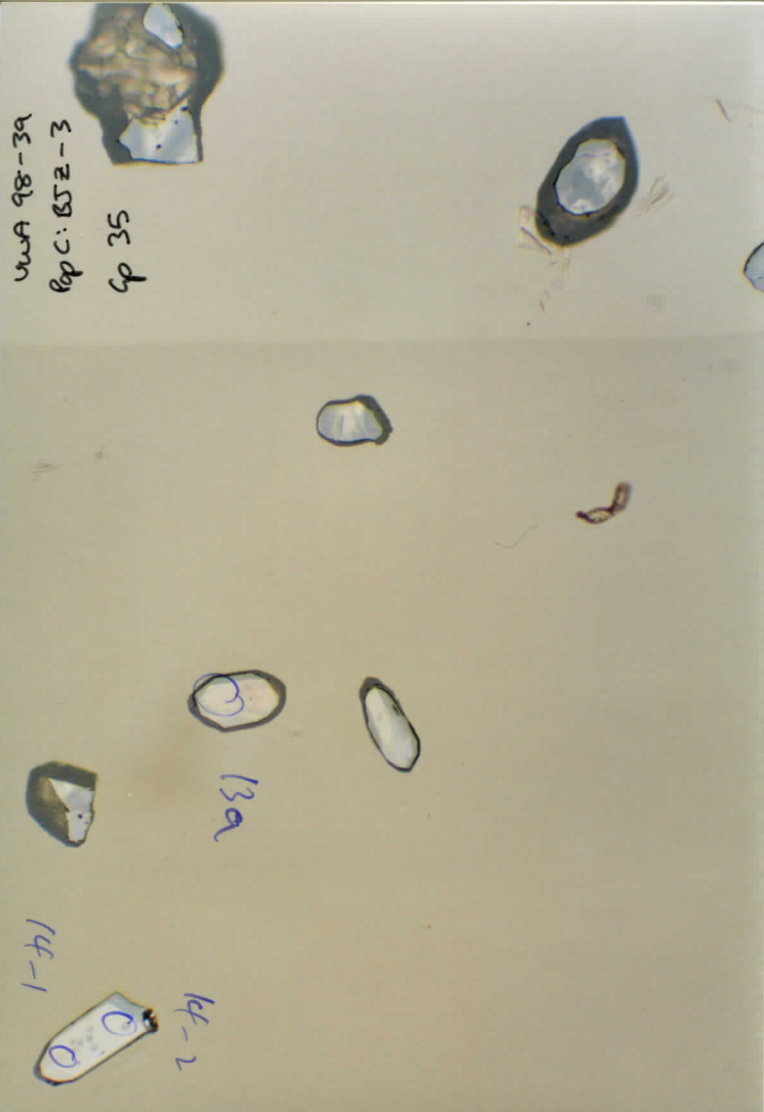
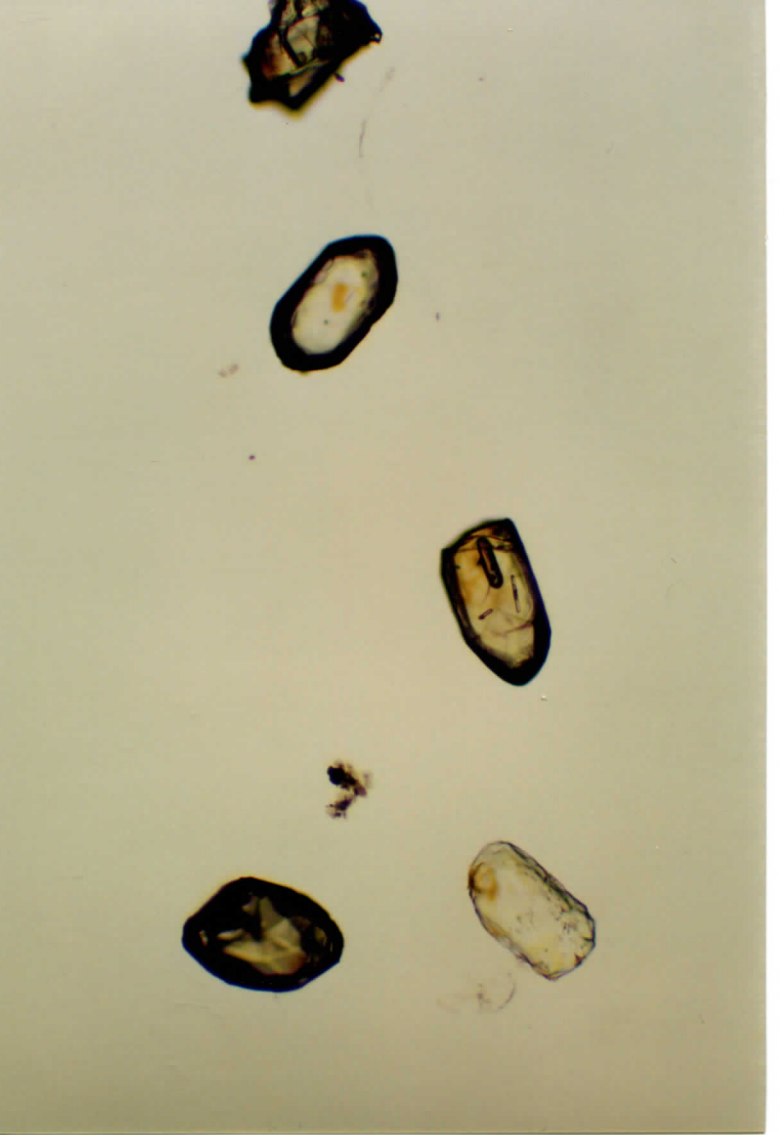
UWA 98-39  
Pop C: BSZ-3  
Sp 35

34-1

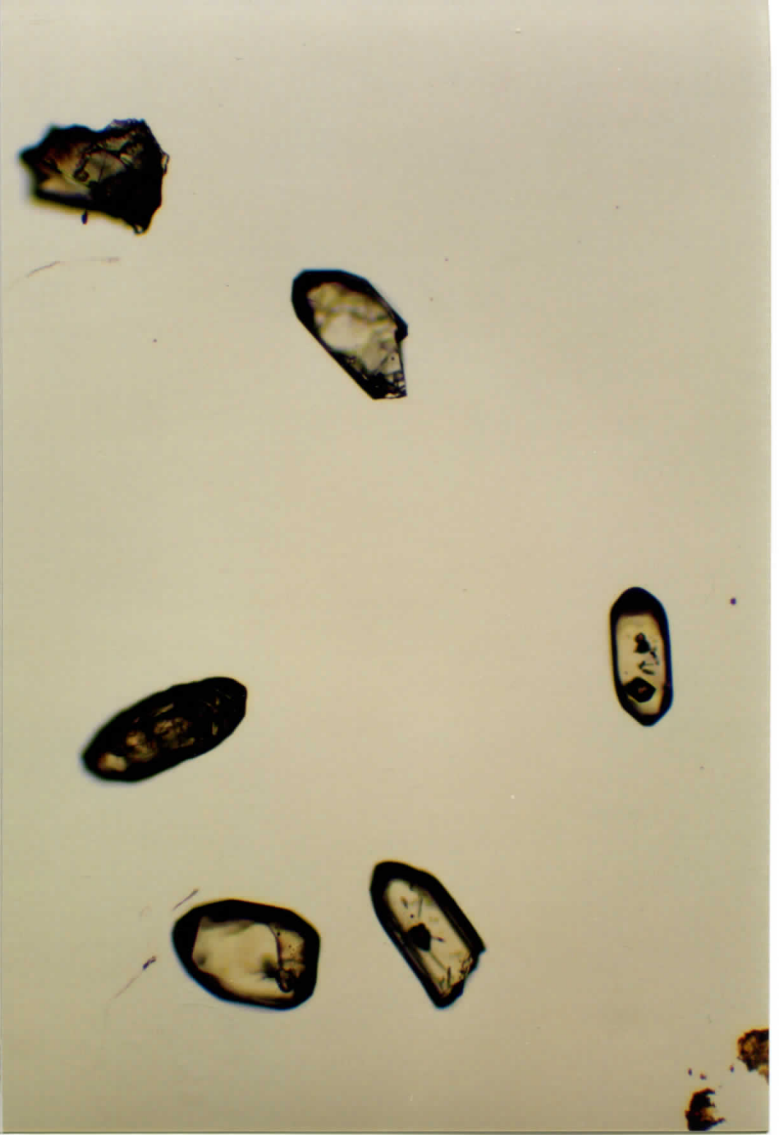
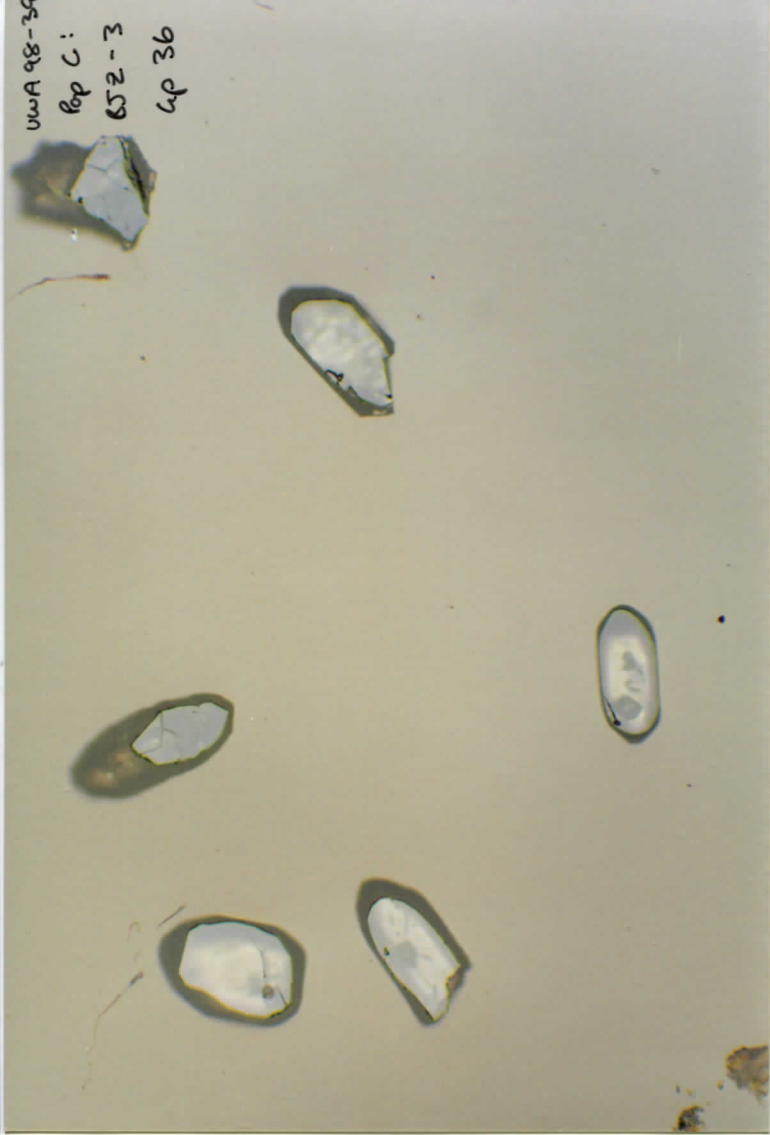
13a

14-1

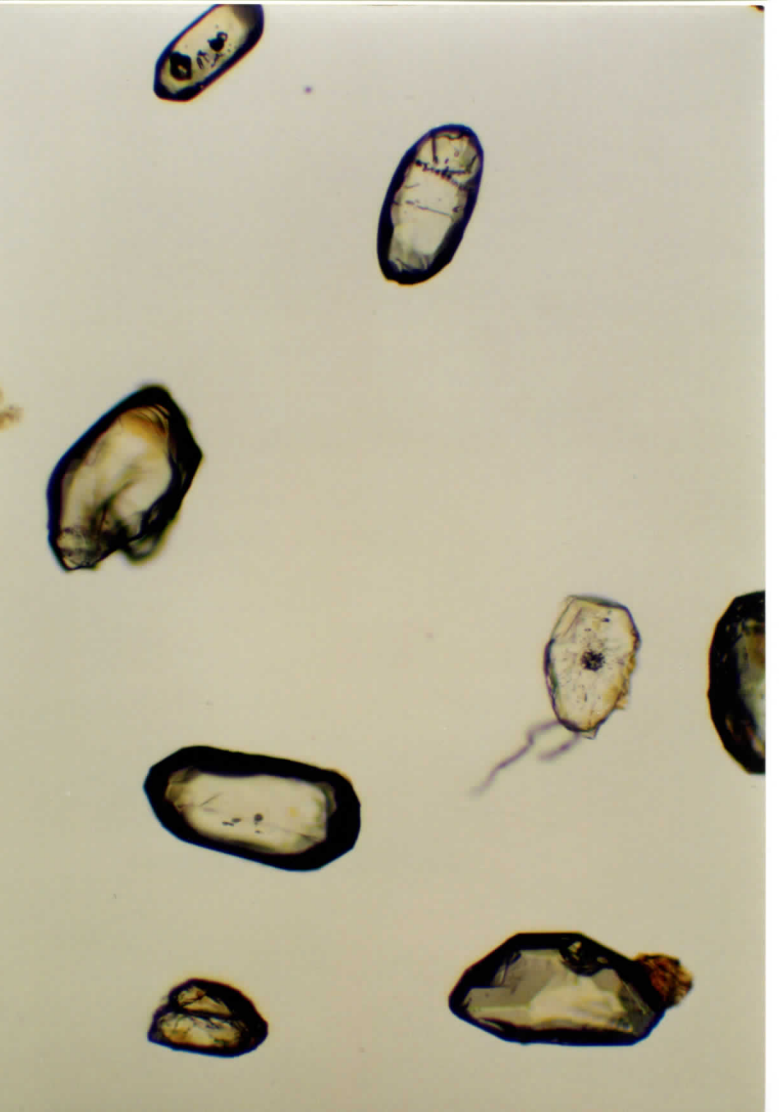
14-2



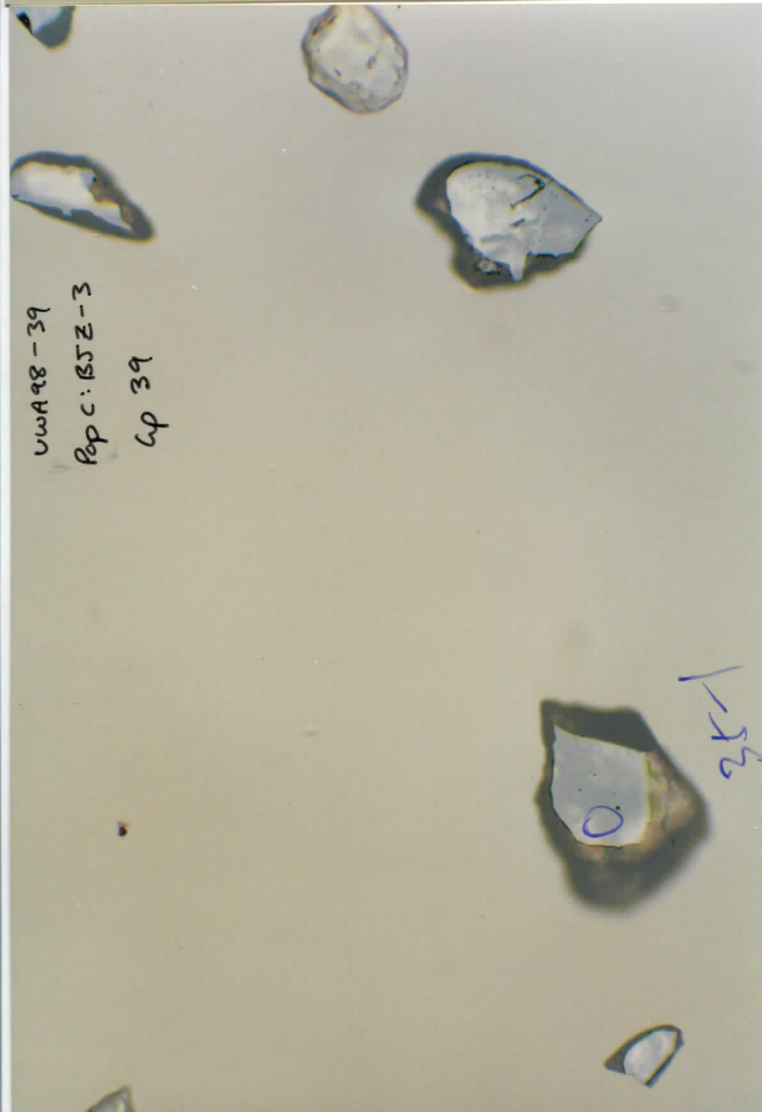
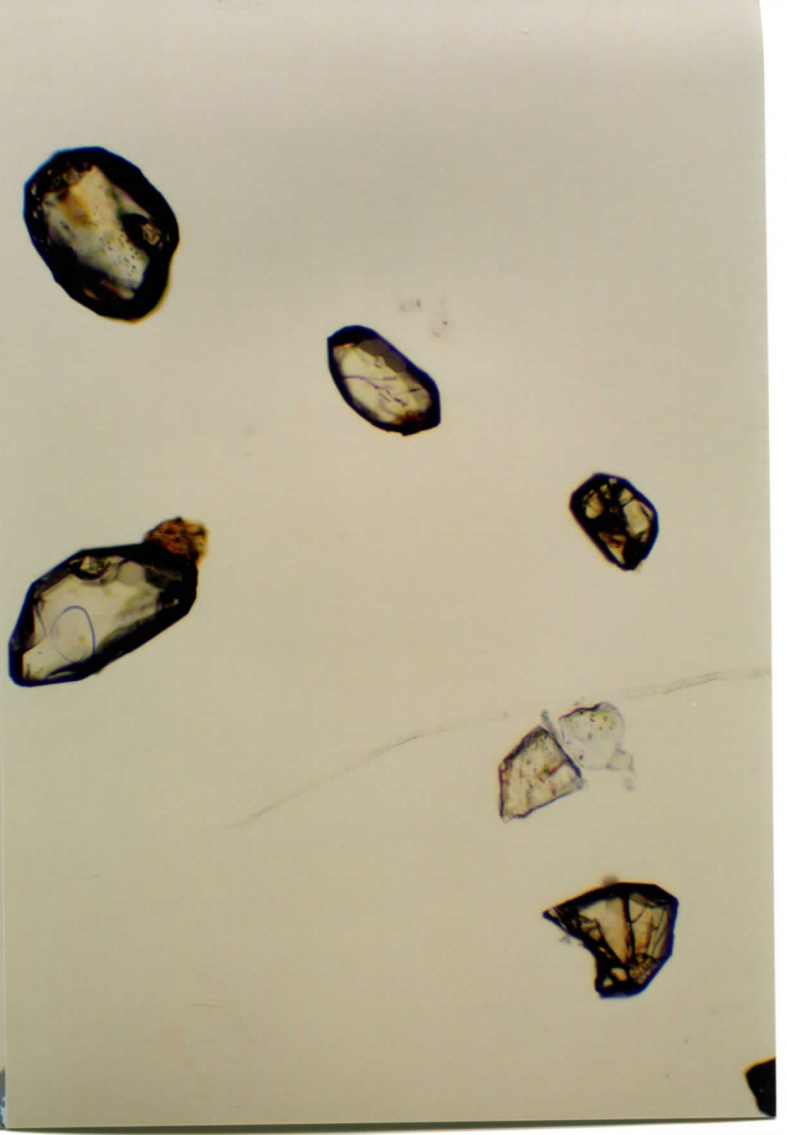
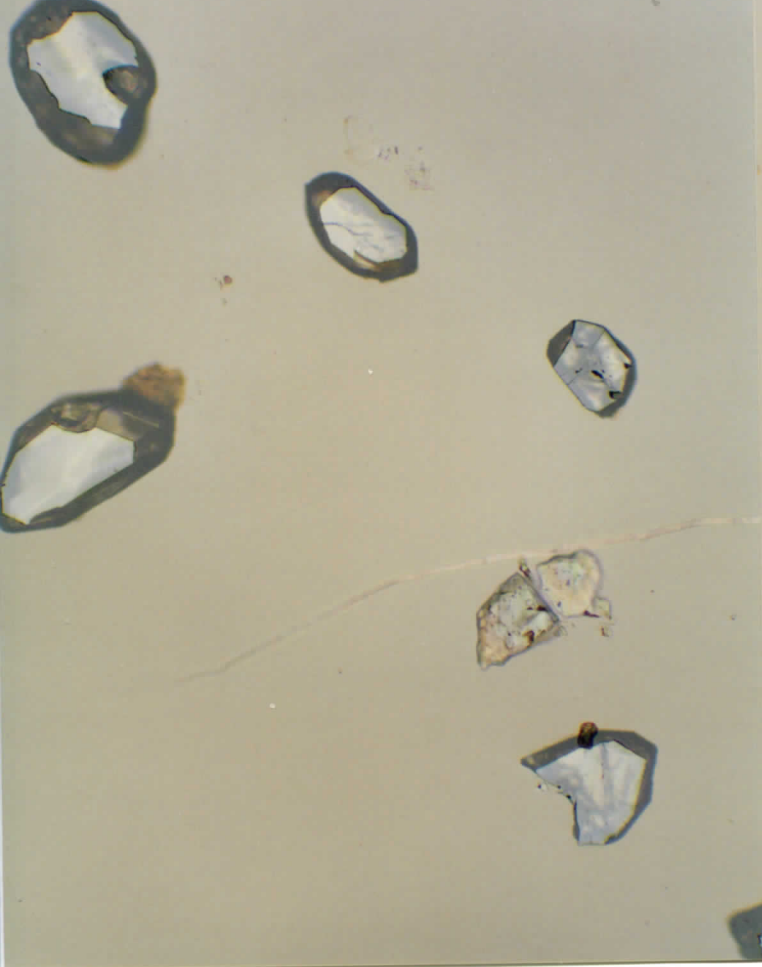
UWA 98-35  
Rep C:  
652-3  
4p 36



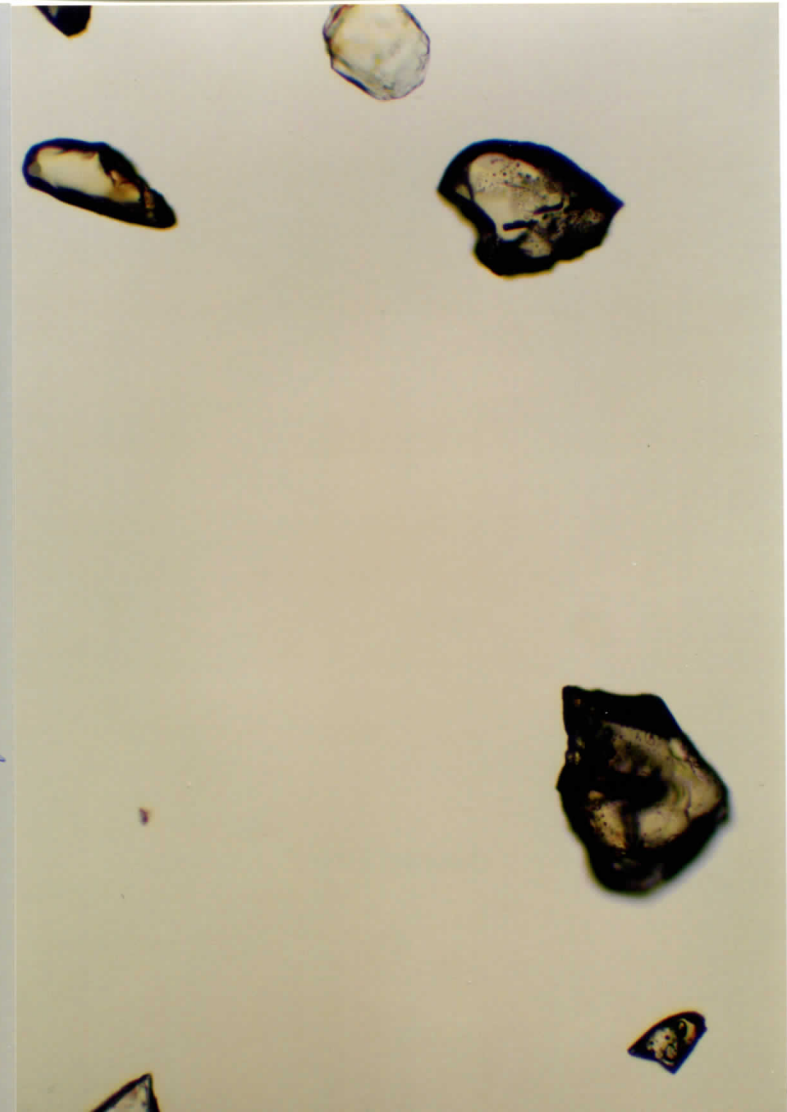
UWA 98-39  
Rep C: 652-2  
4p 37



UWA 98-38  
Pop c: B5Z  
-3  
cp 38

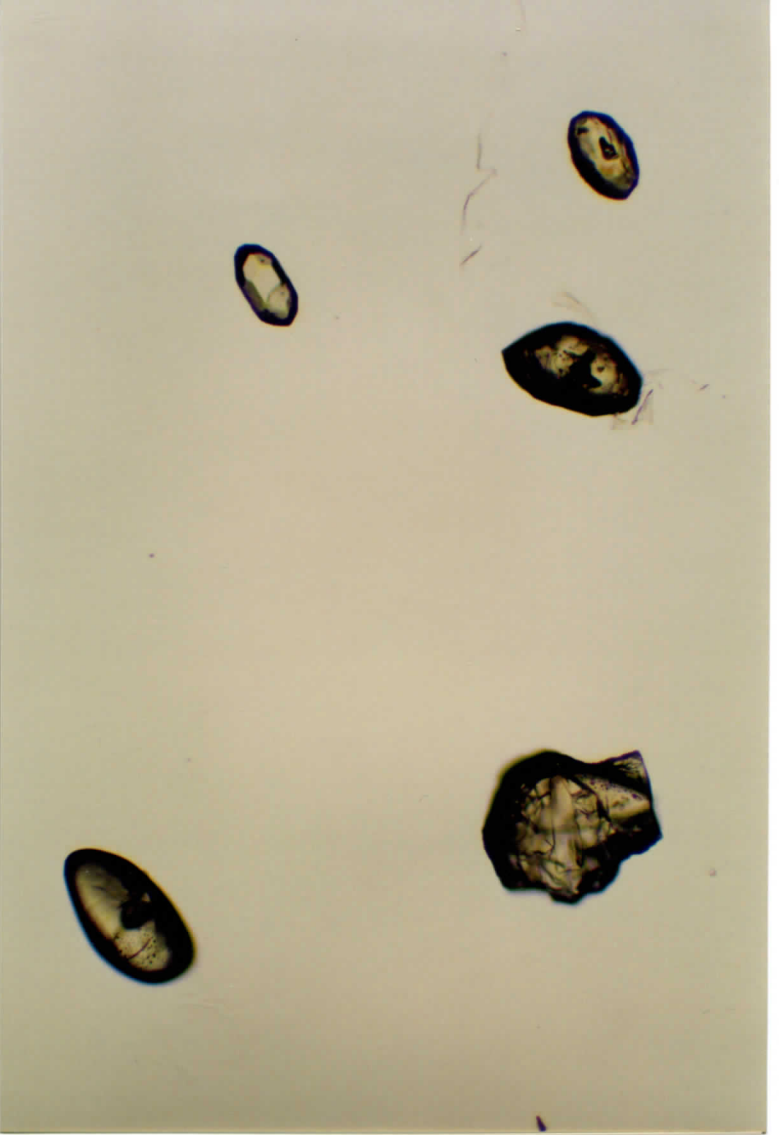
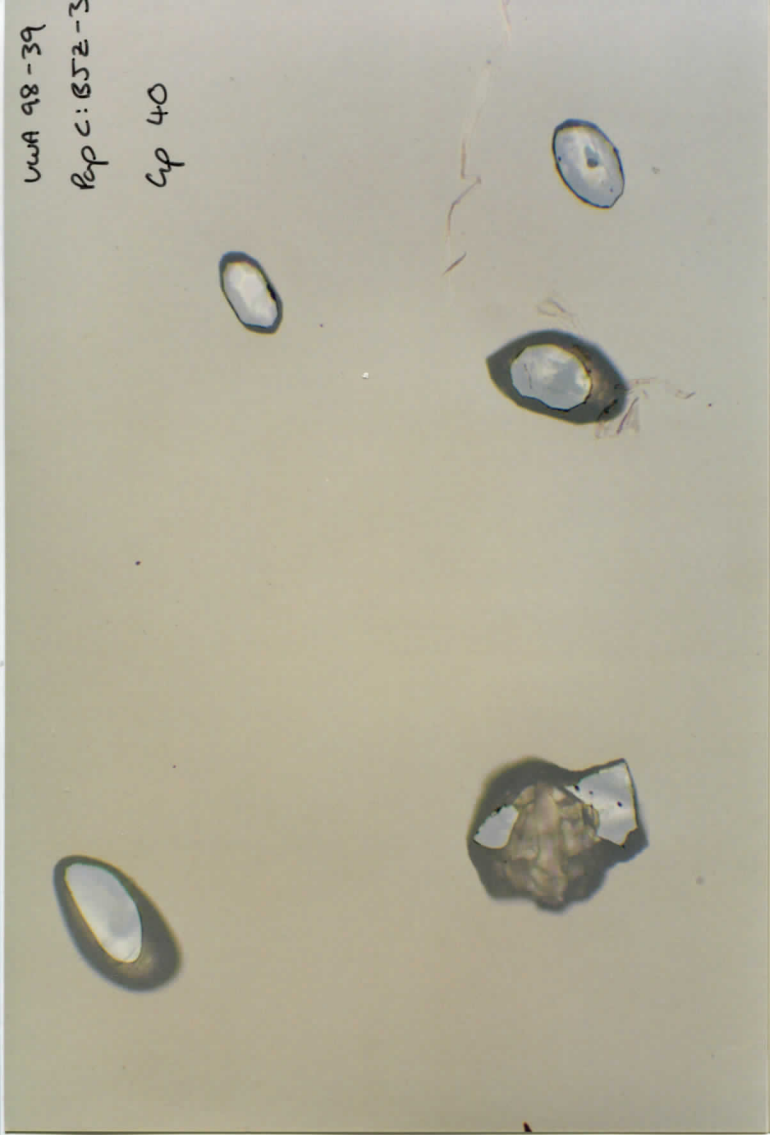


UWA 98-39  
Pop c: B5Z-3  
cp 39

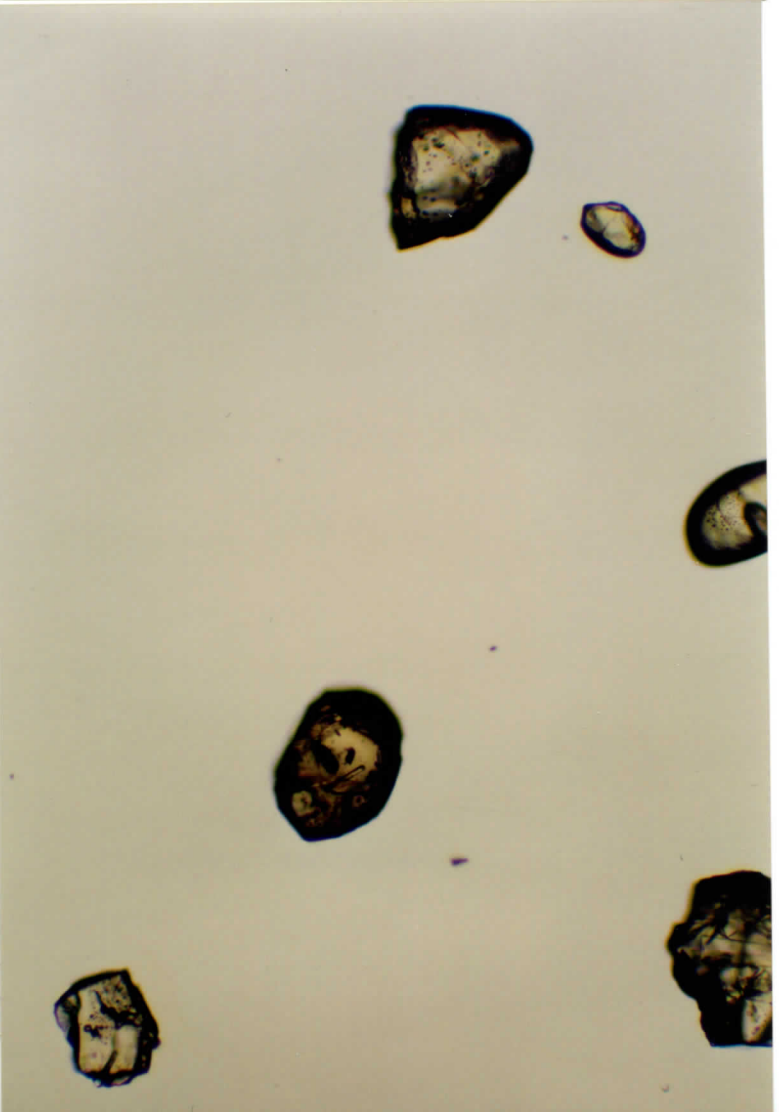
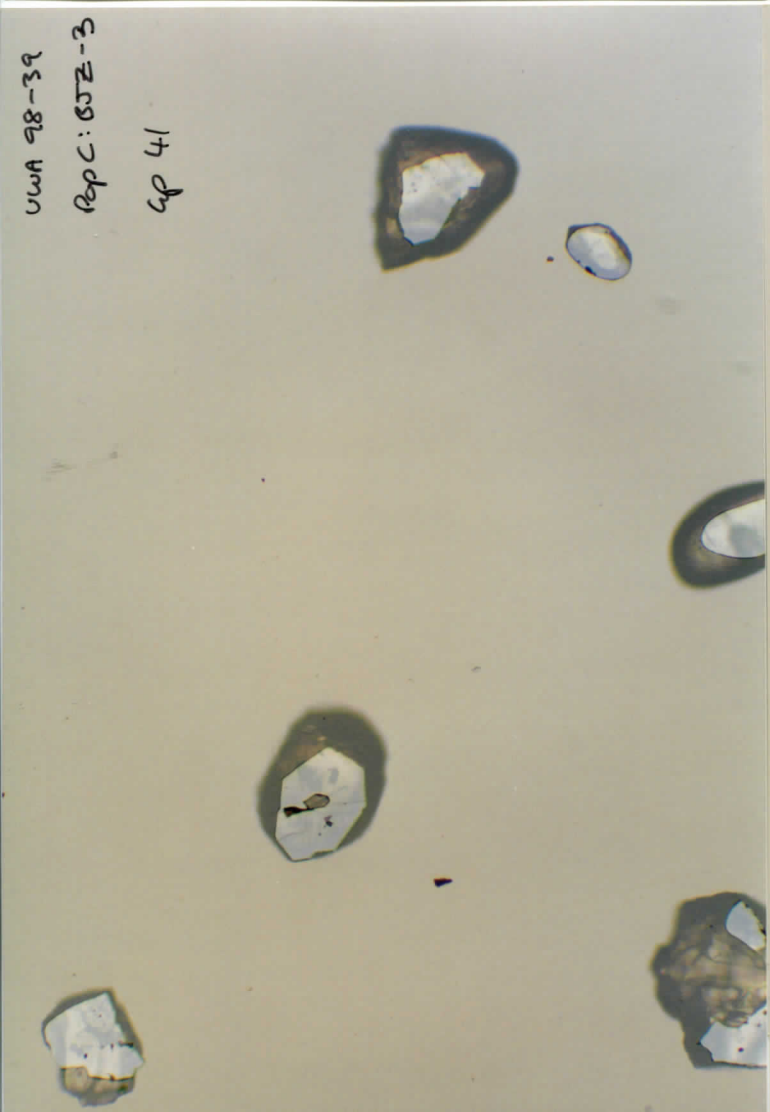




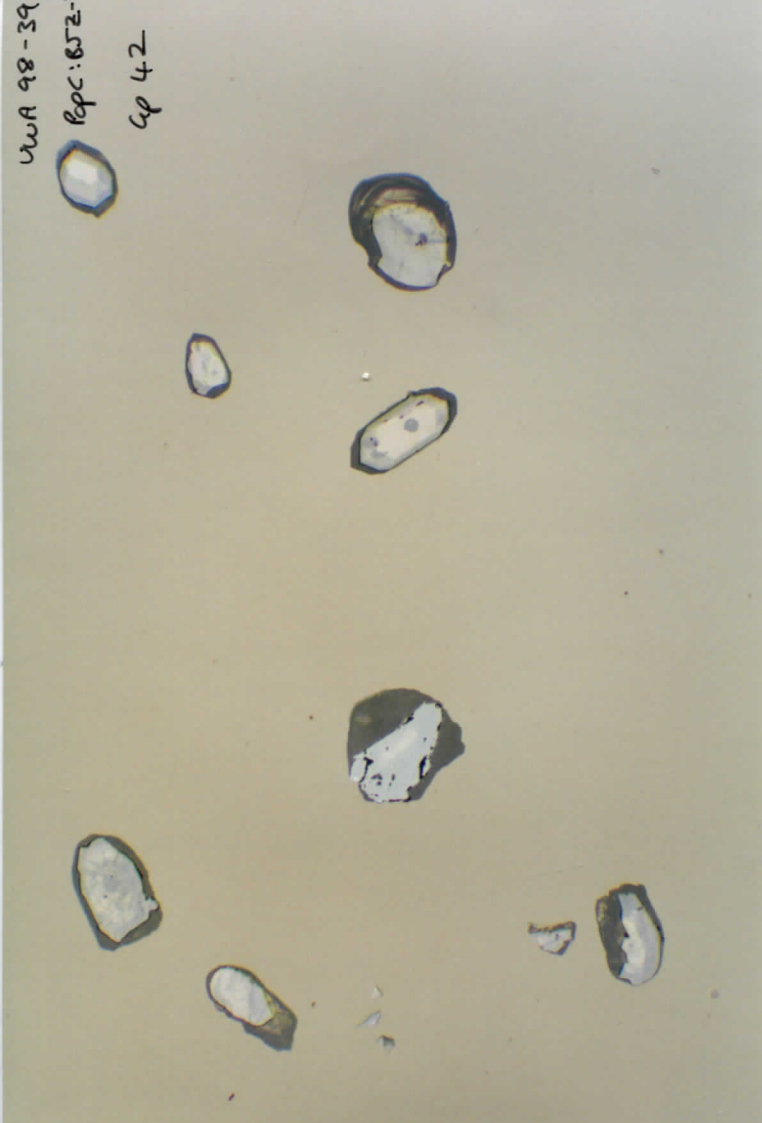
UWA 98-39  
Pop C: BSZ-3  
Sp 40



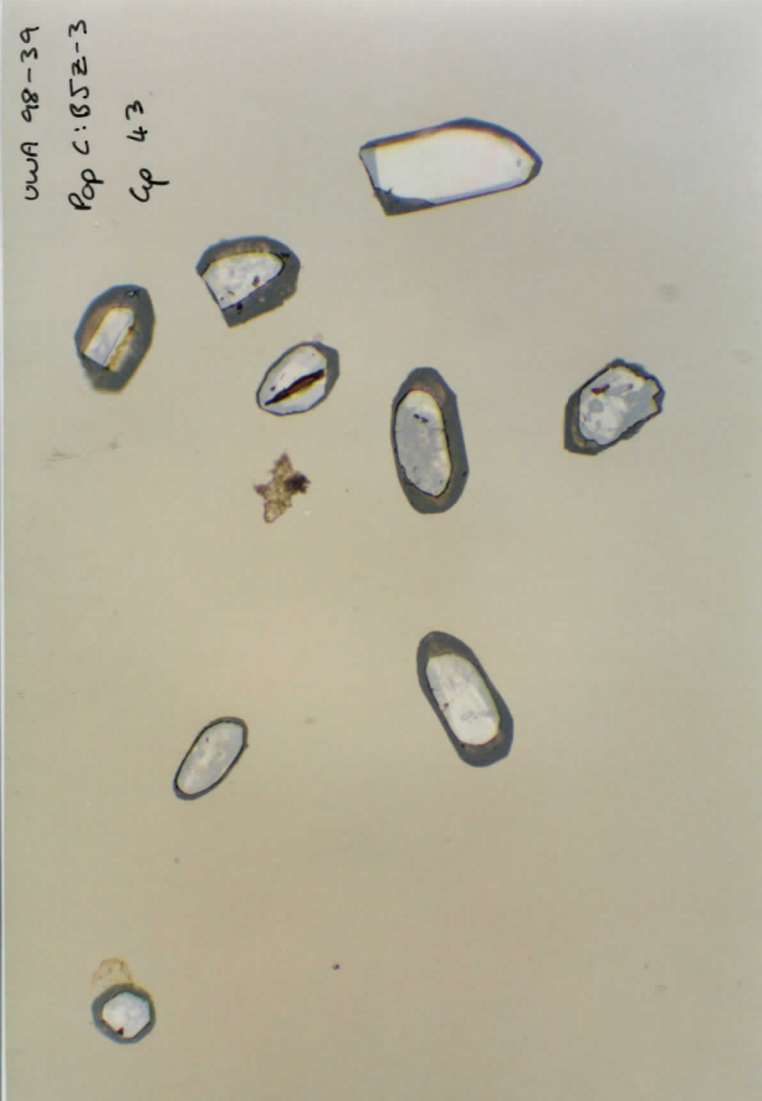
UWA 98-39  
Pop C: BSZ-3  
Sp 41



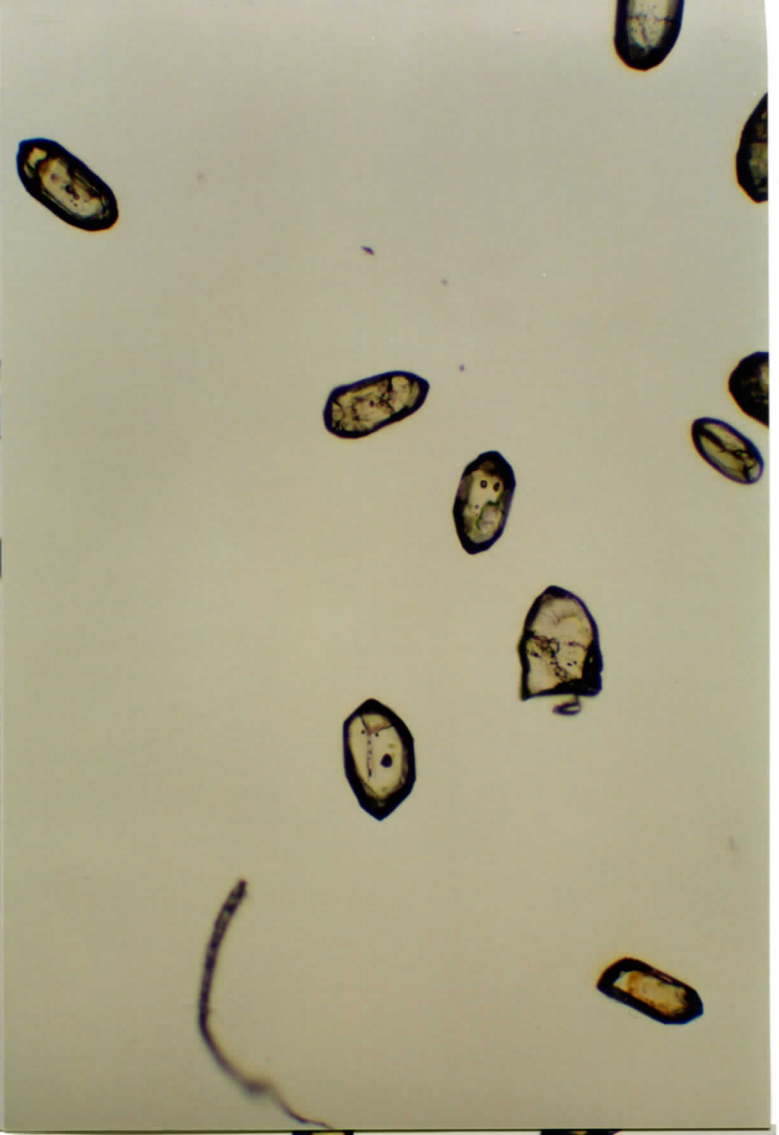
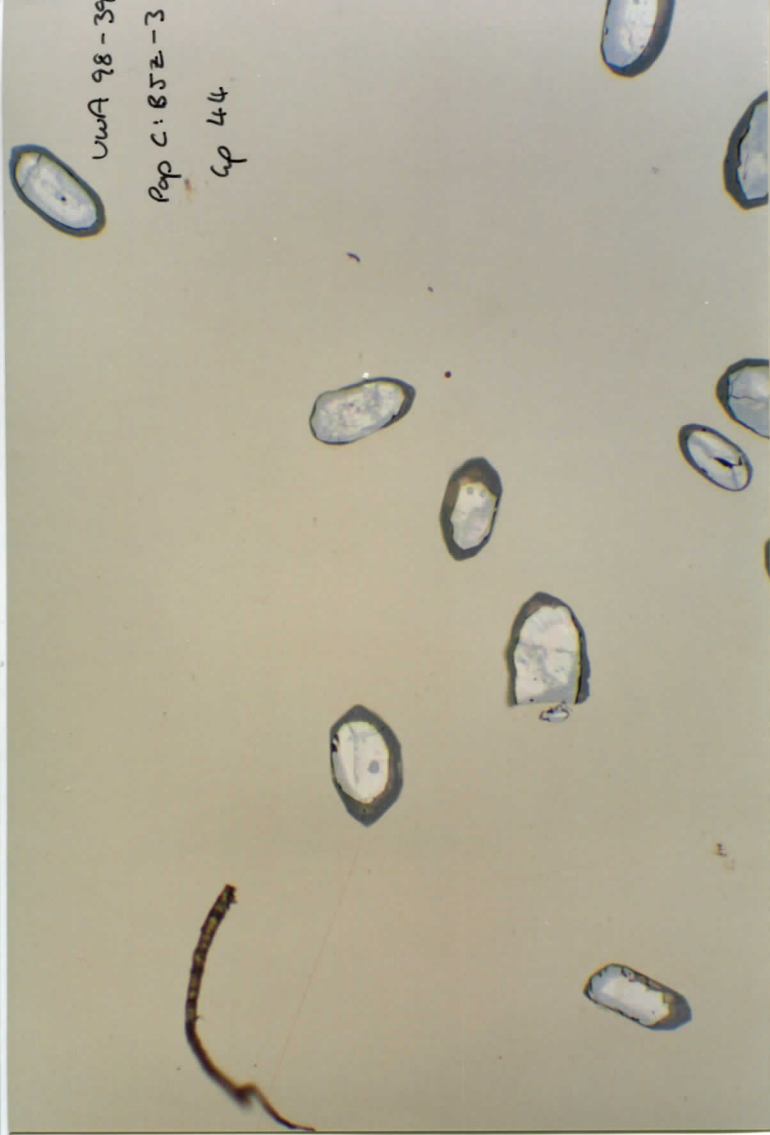
UWA 98-35  
Pop C: 652-  
Cp 42



UWA 98-39  
Pop C: 652-3  
Cp 43

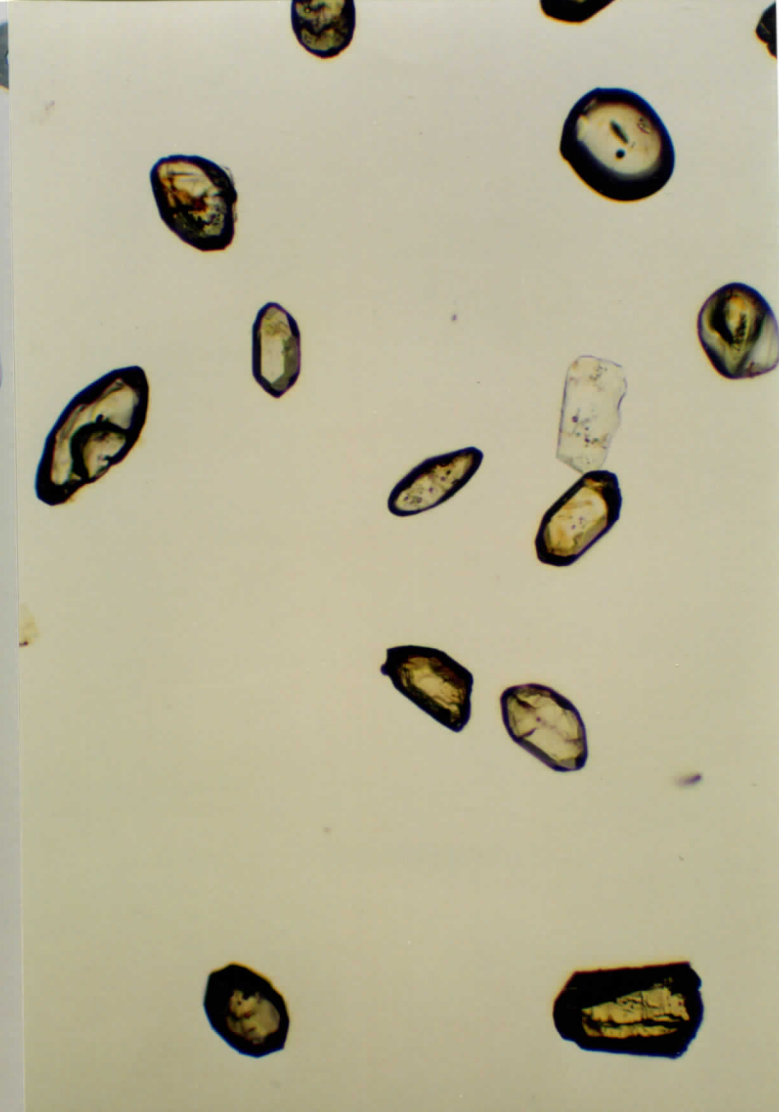
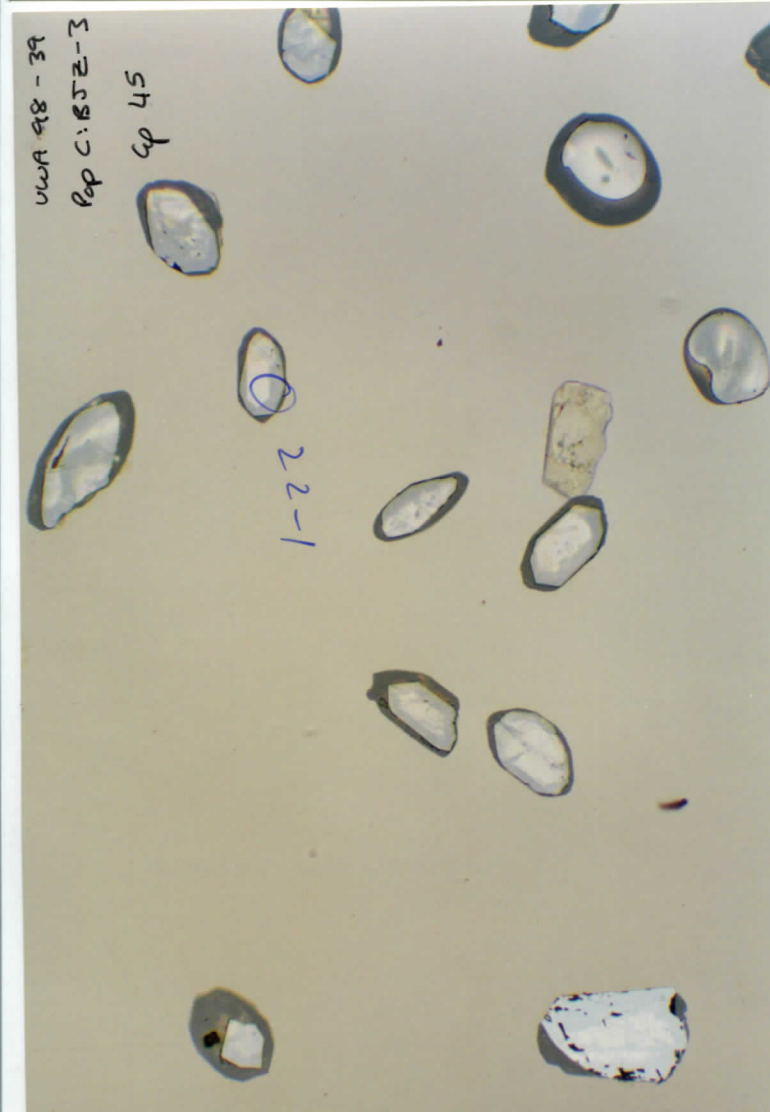


VWA 98-39  
Pop C: 852-3  
Sp 44

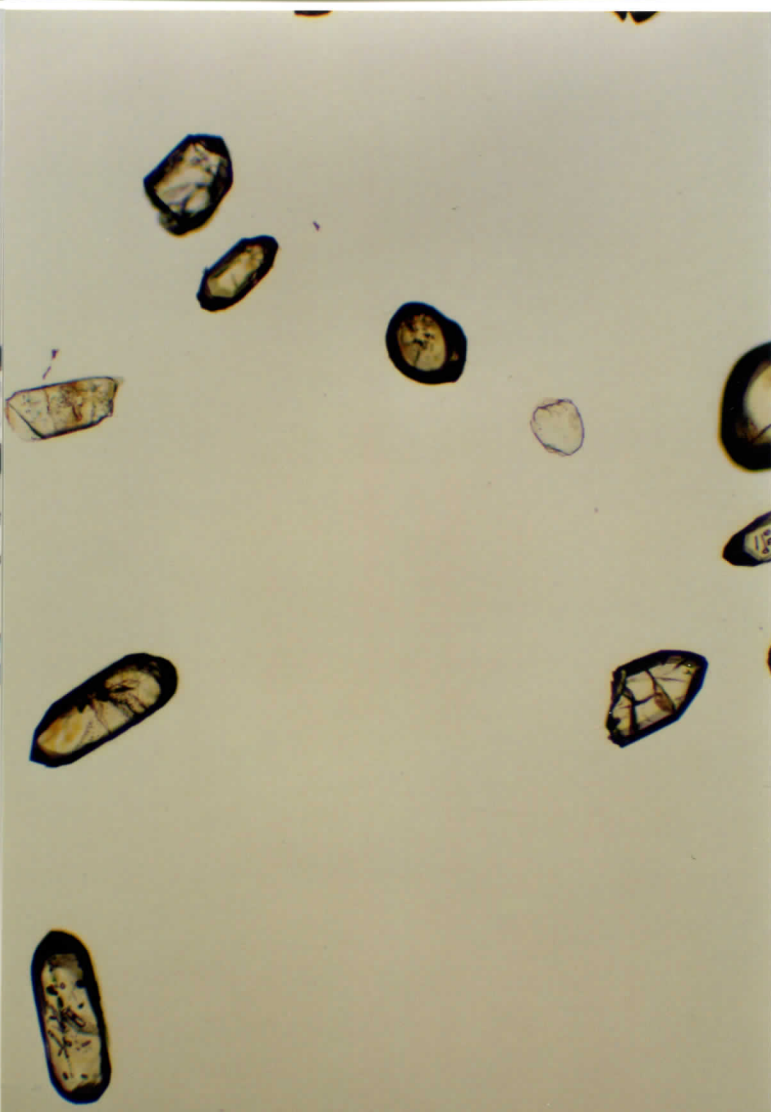
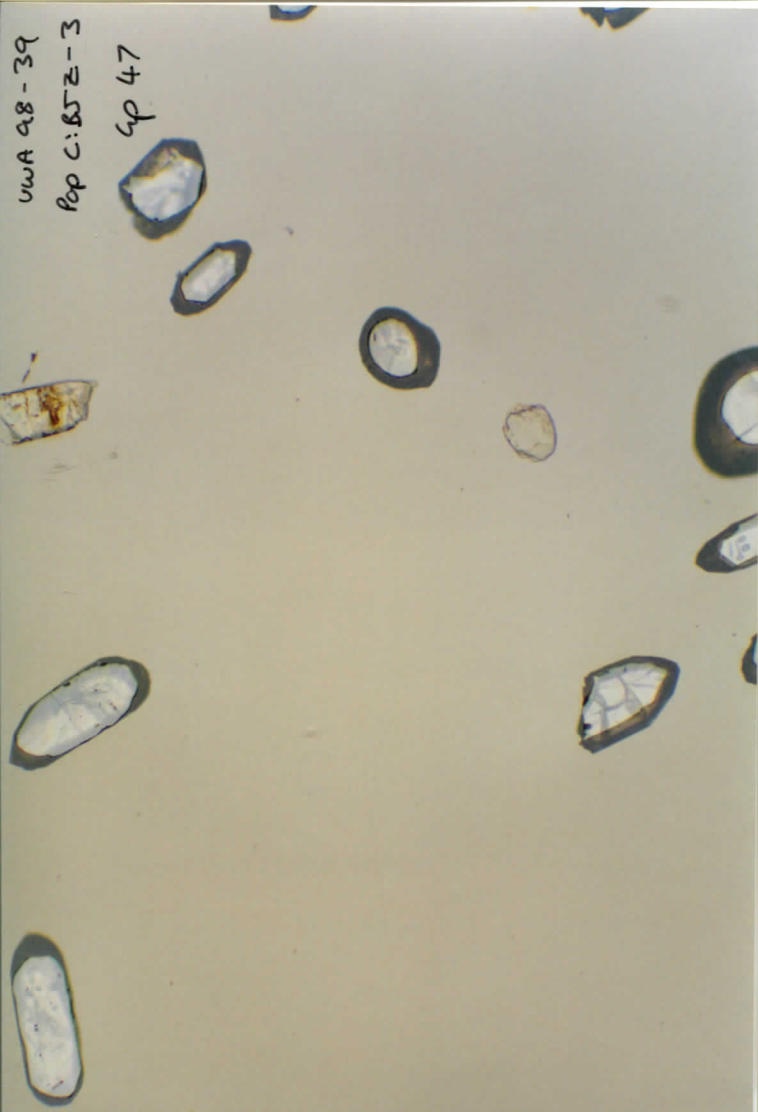
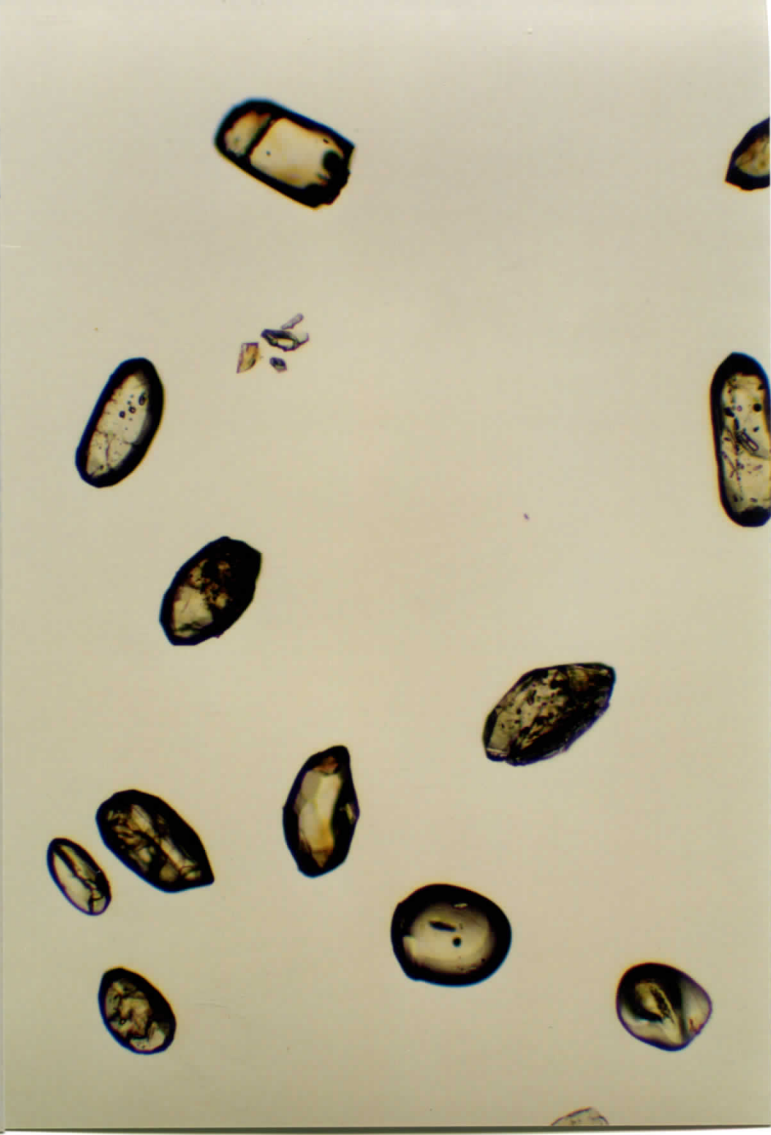
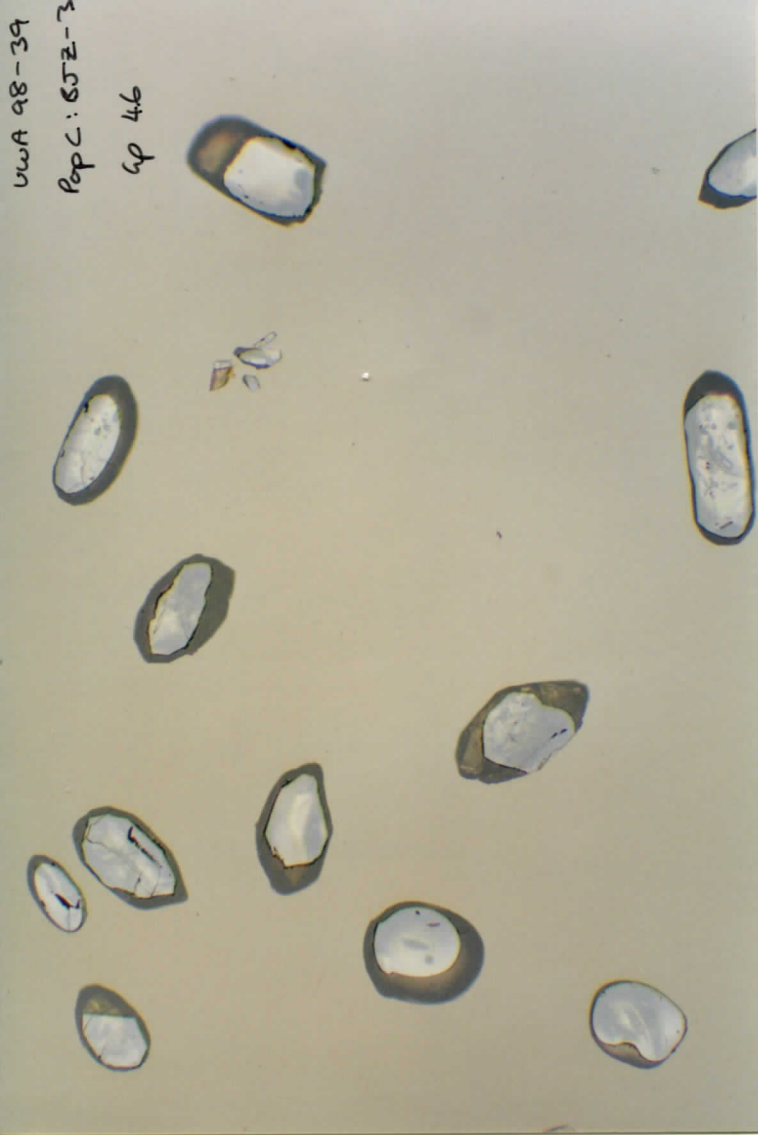


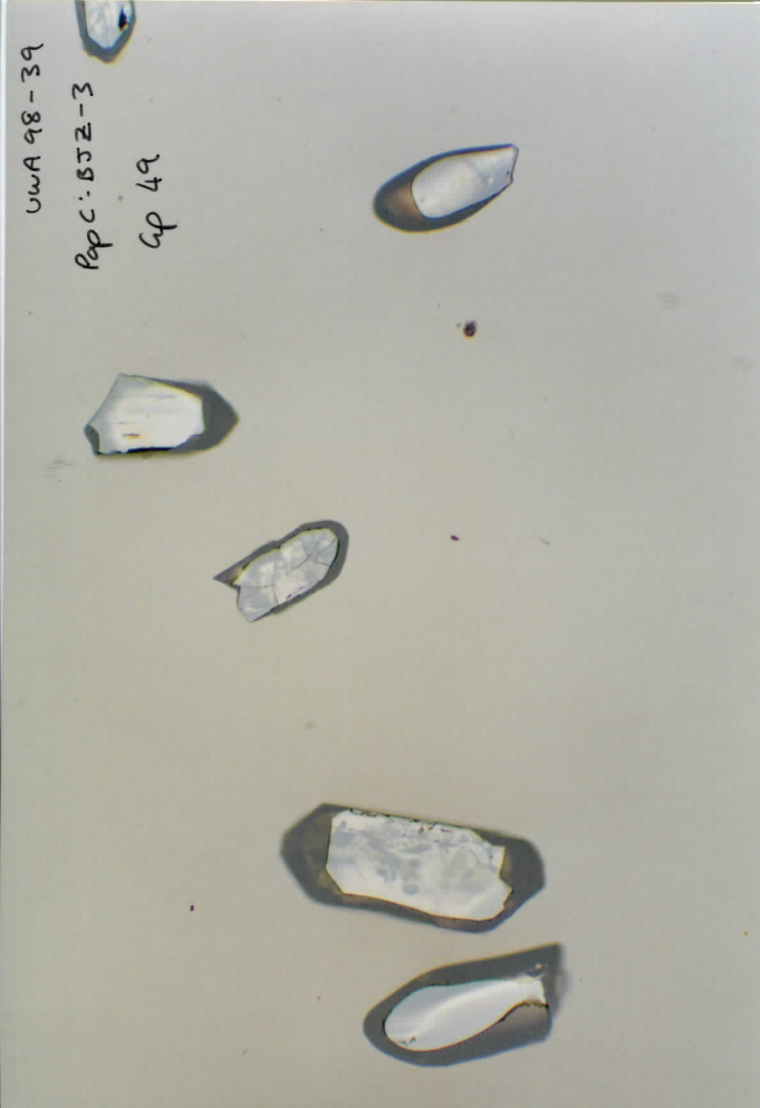
VWA 98-39  
Pop C: 852-3  
Sp 45

22-1

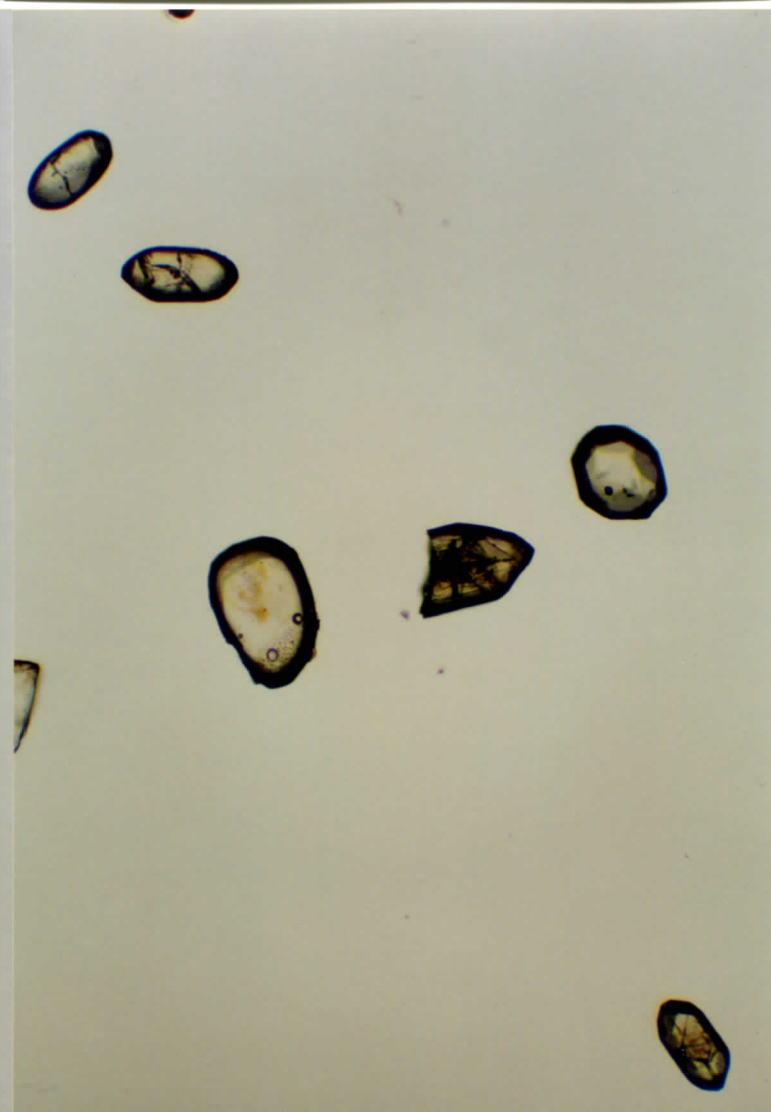
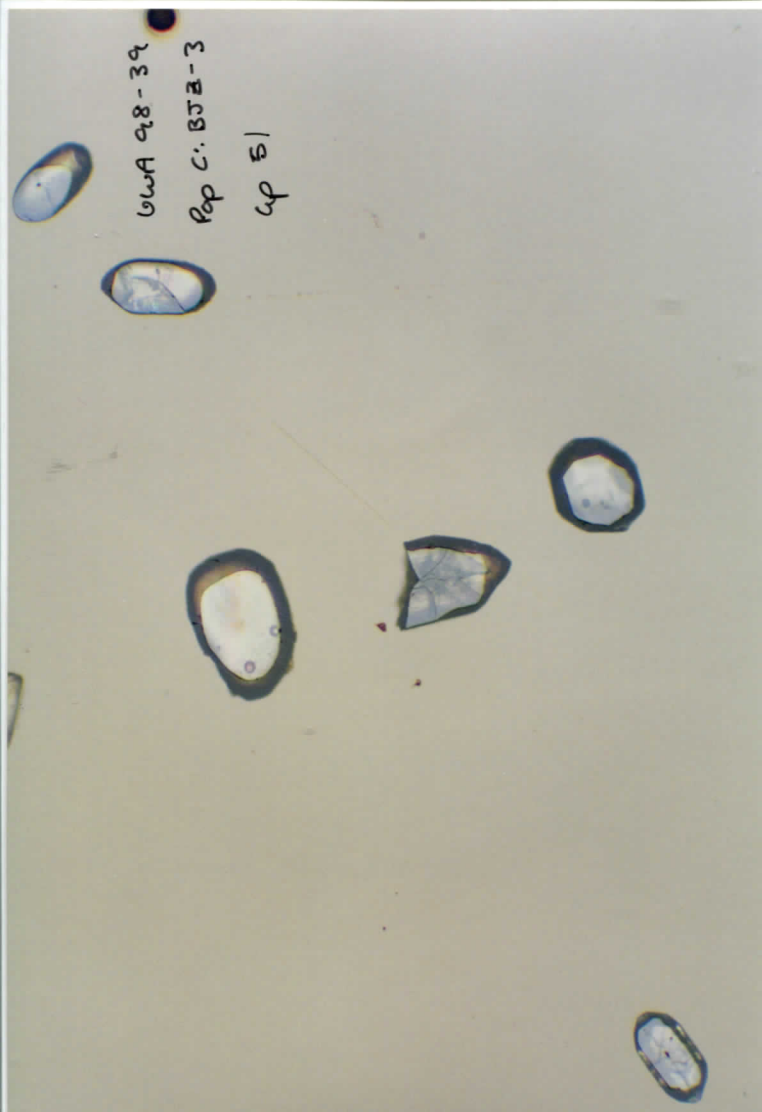
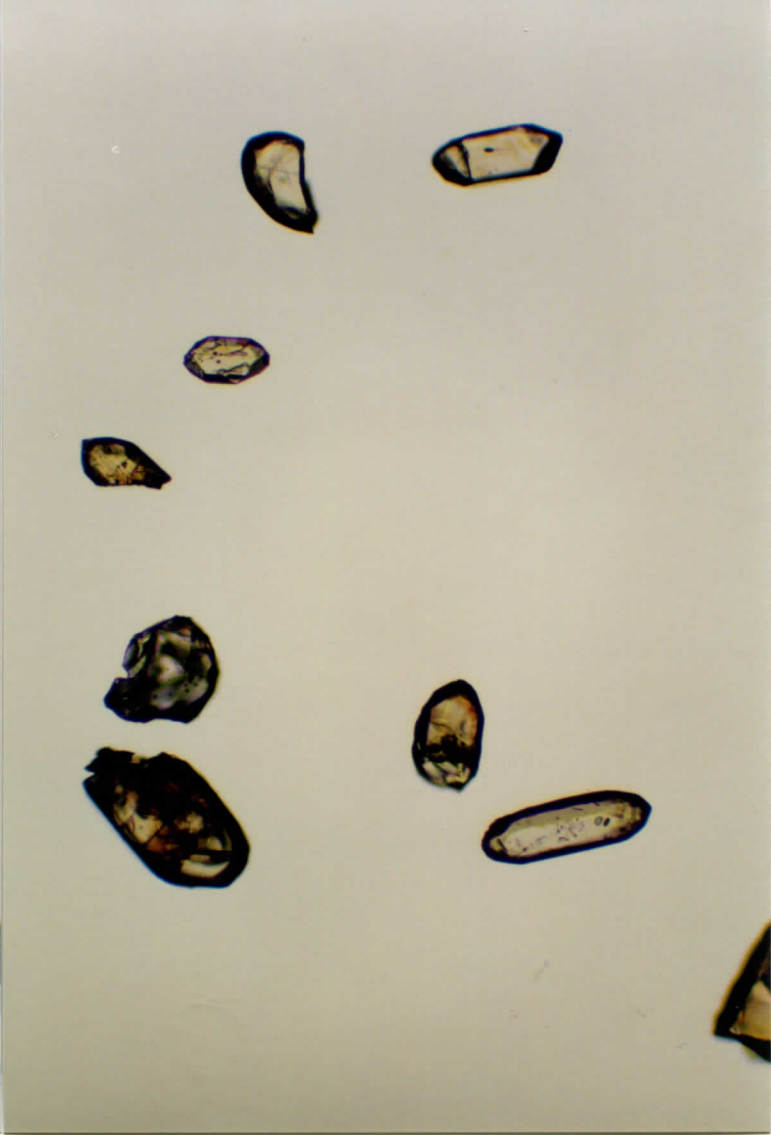
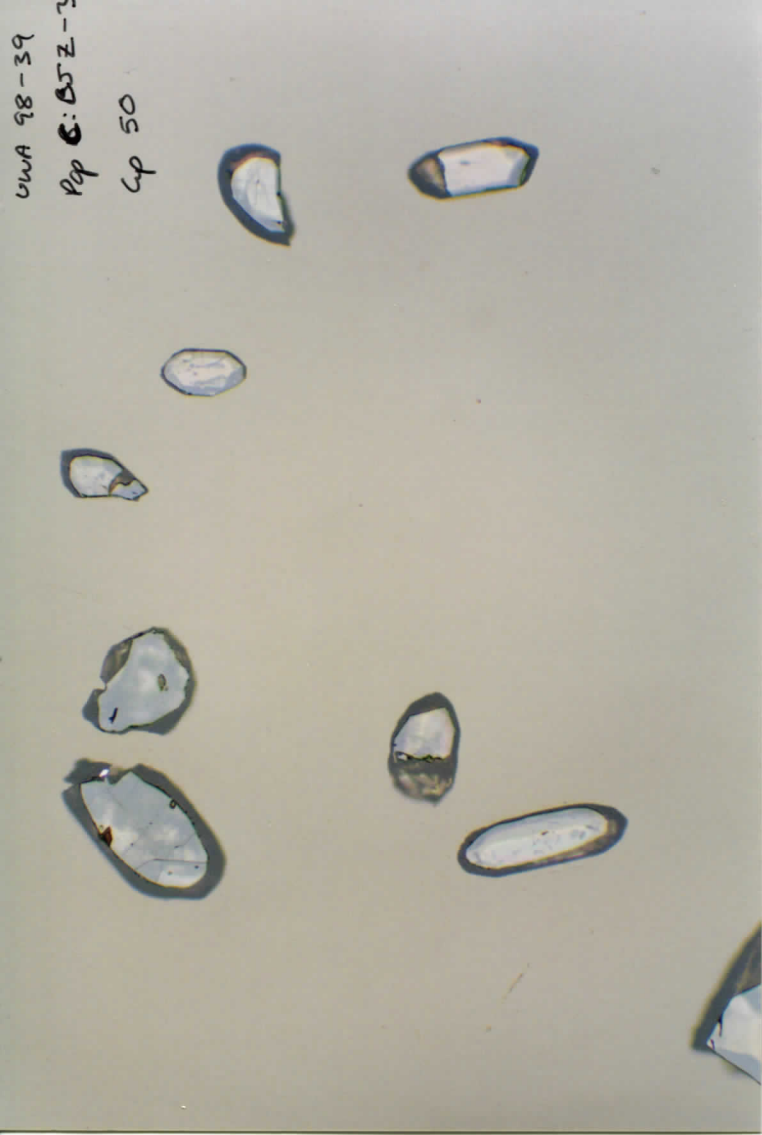




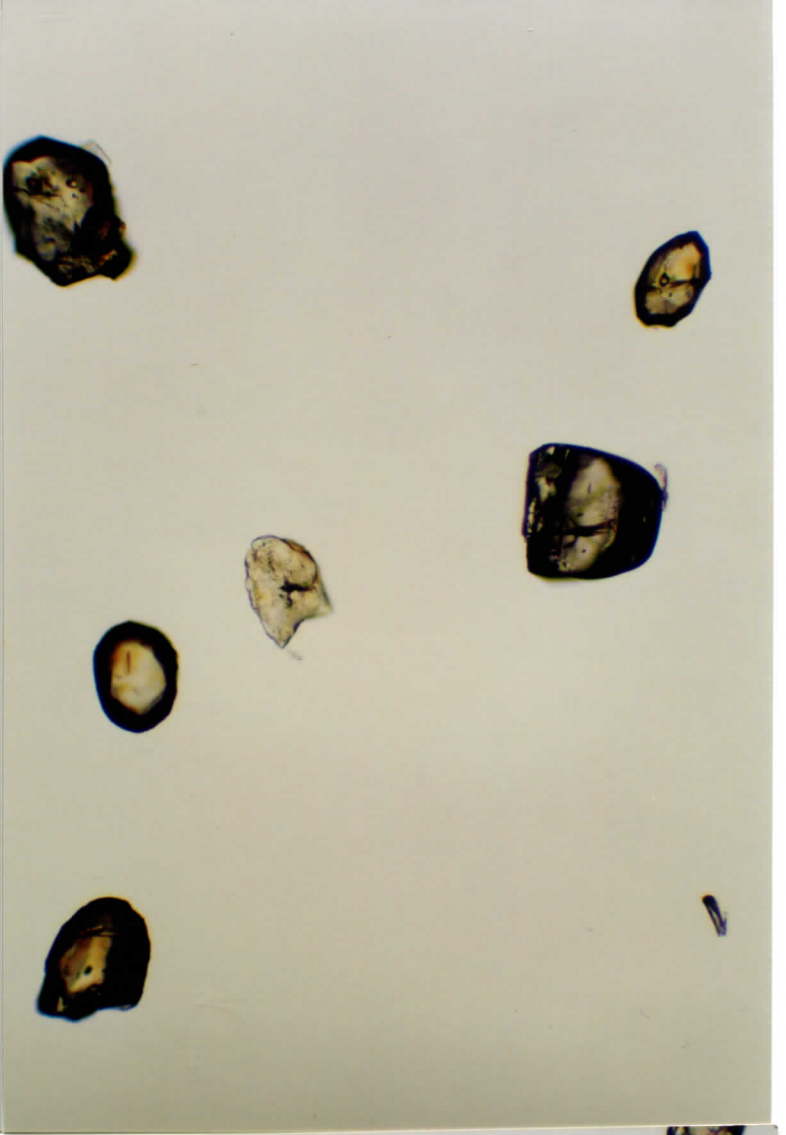
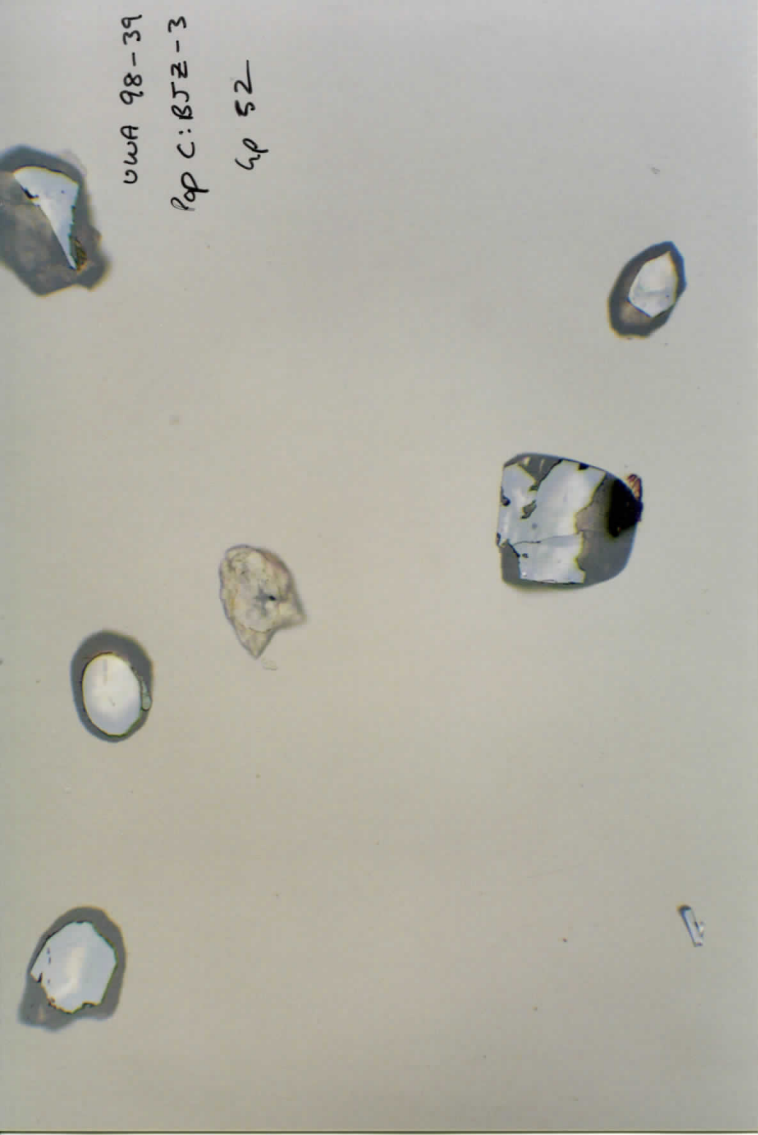




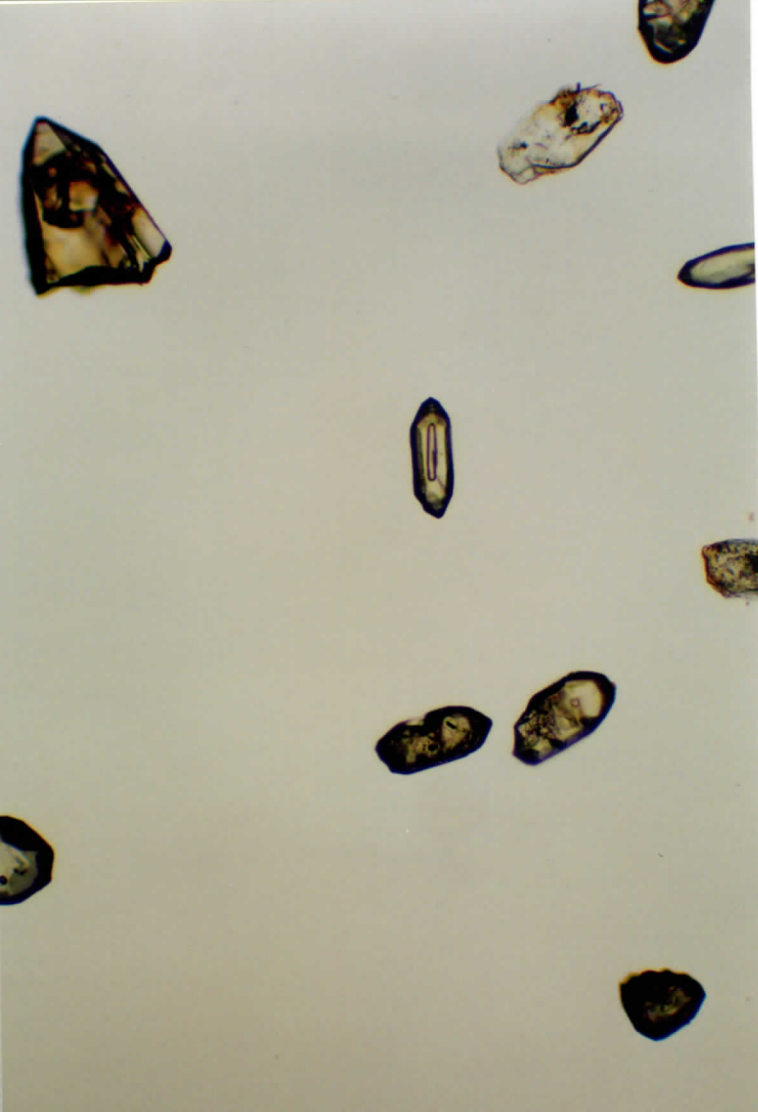




UWA 98-39  
Pop C: BJZ-3  
Sp 52



UWA 98-39  
Pop C: BJZ-3  
Sp 53



UWA 98-39  
Pop C: BJZ-3  
Gp 54

