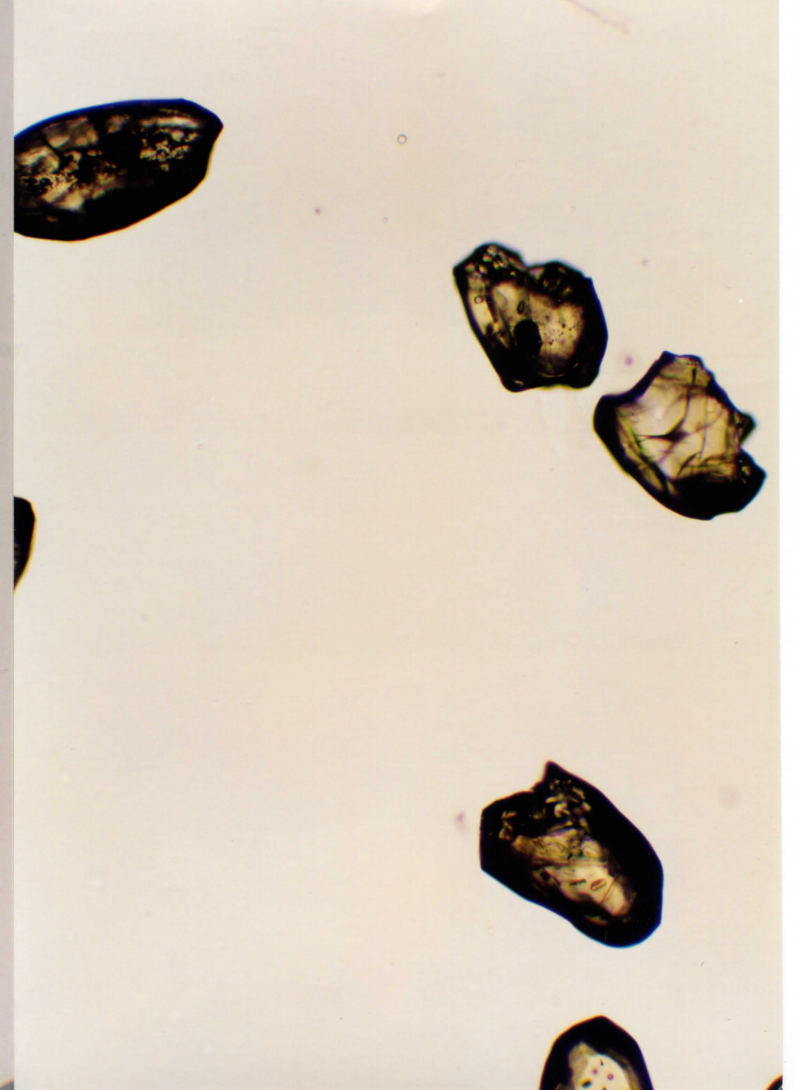
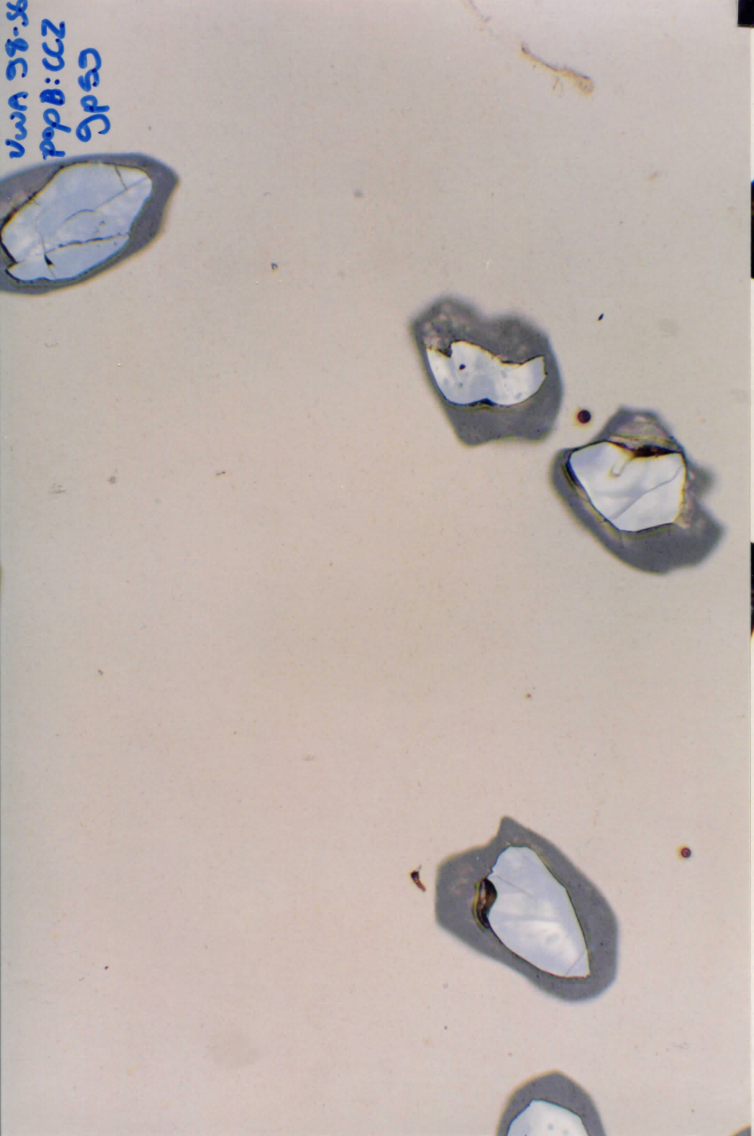
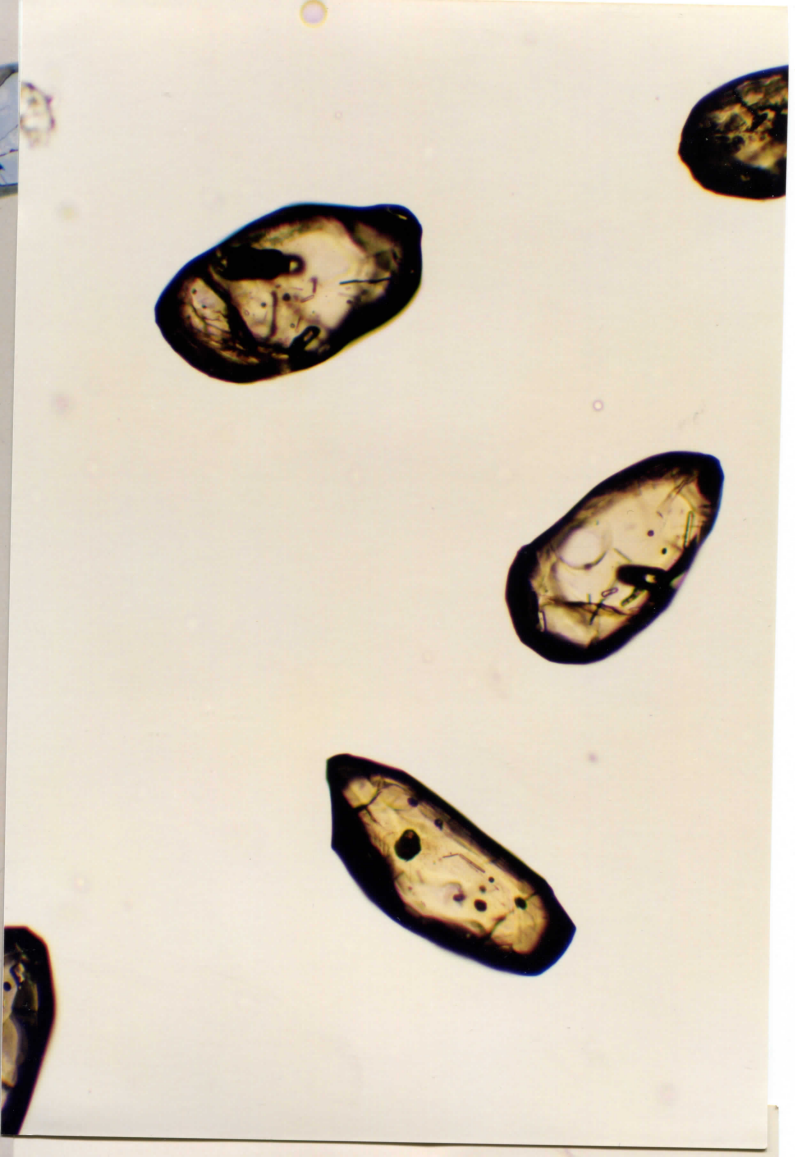
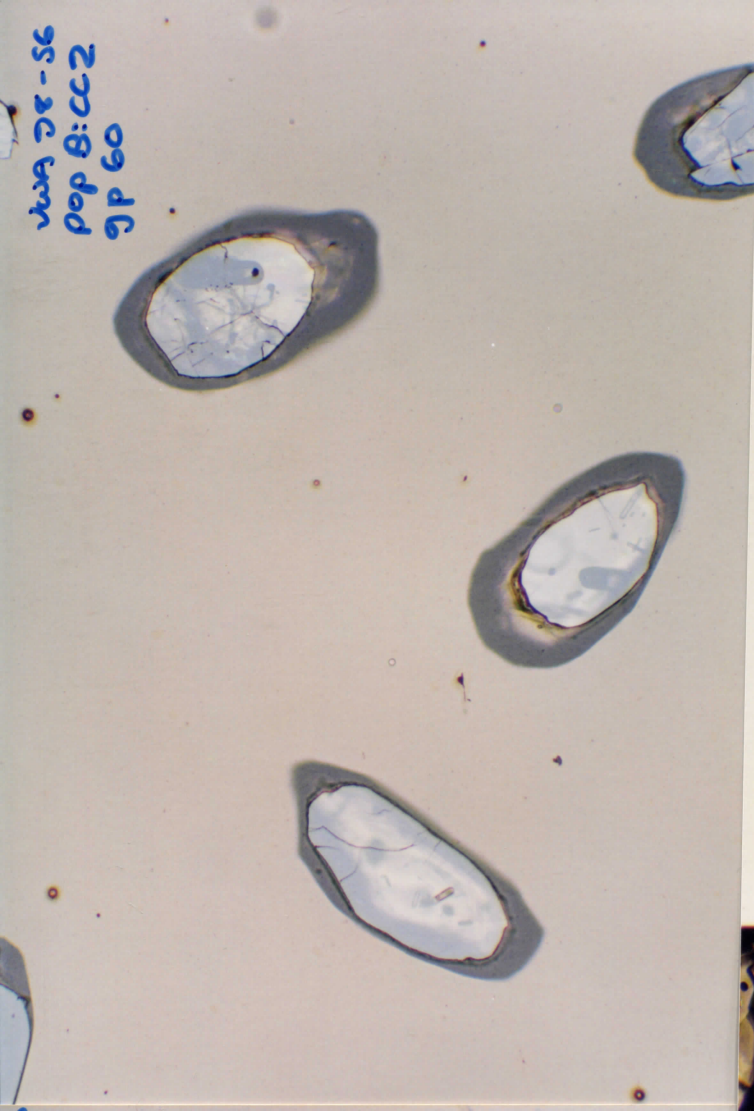


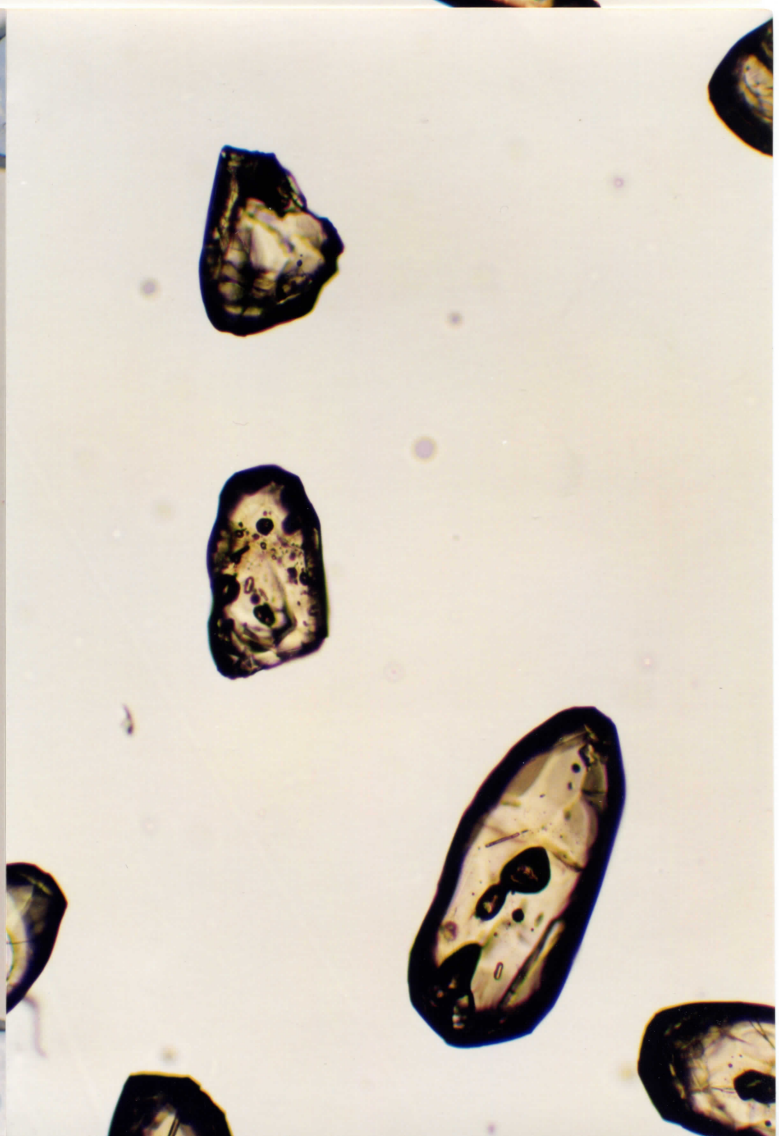
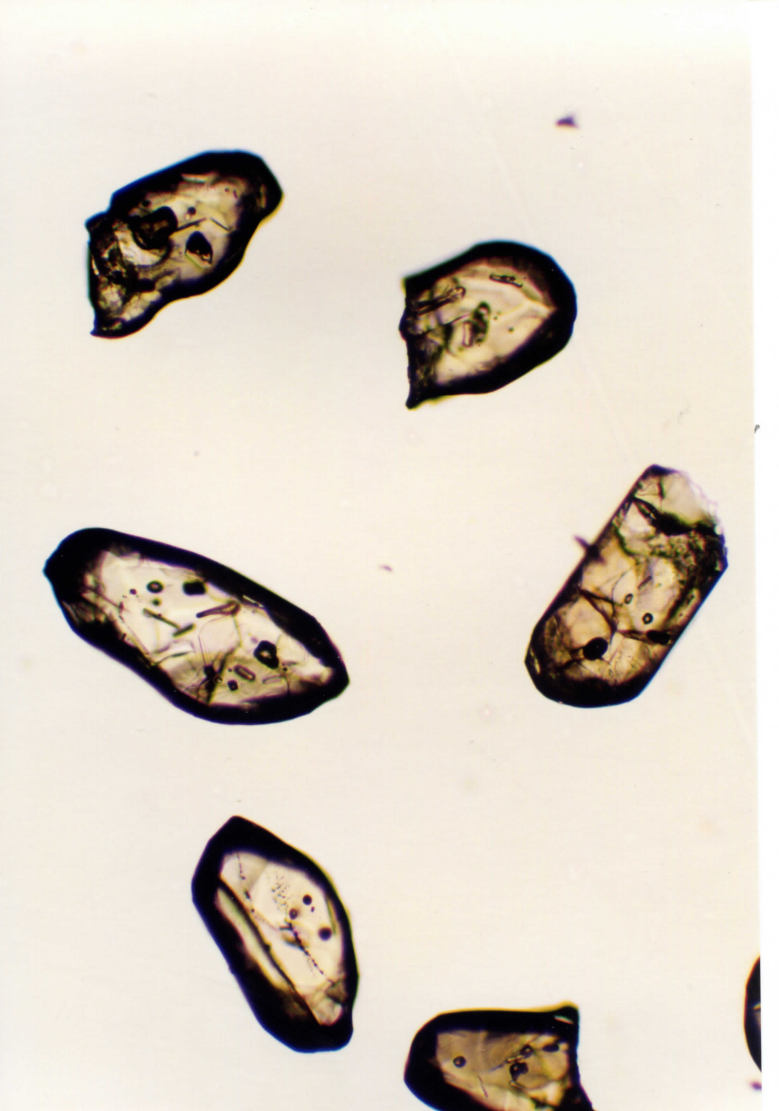
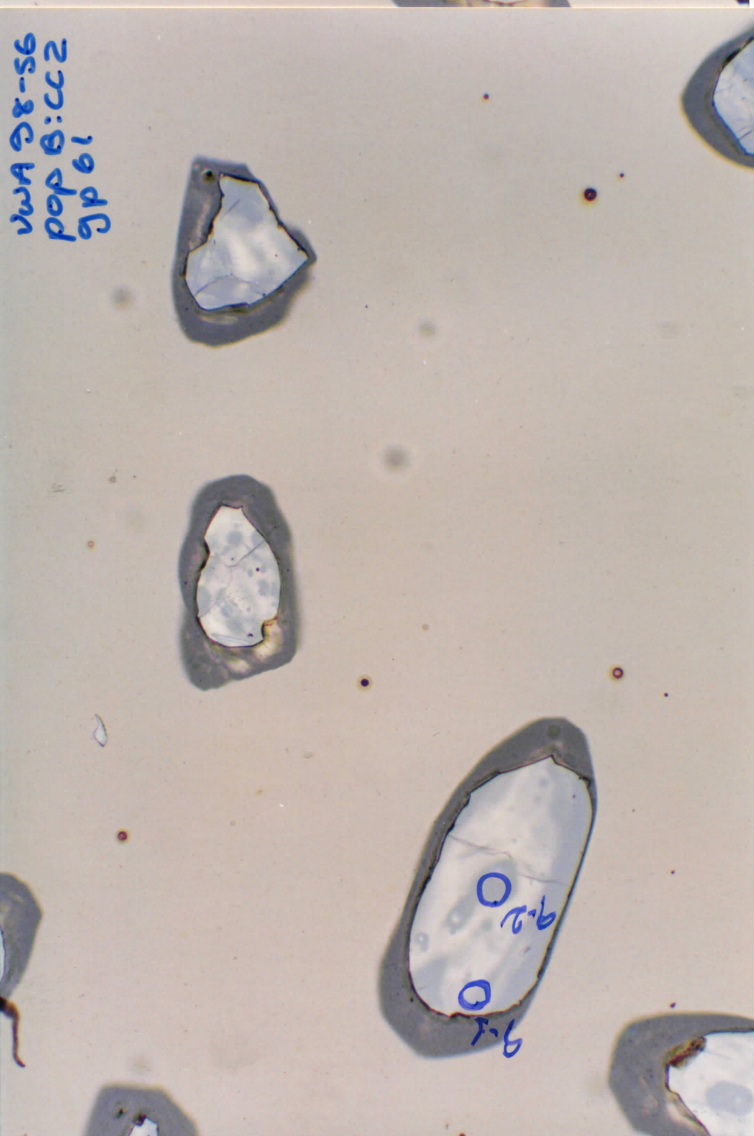
vwa 28-56  
pop B: CC2  
JP 60



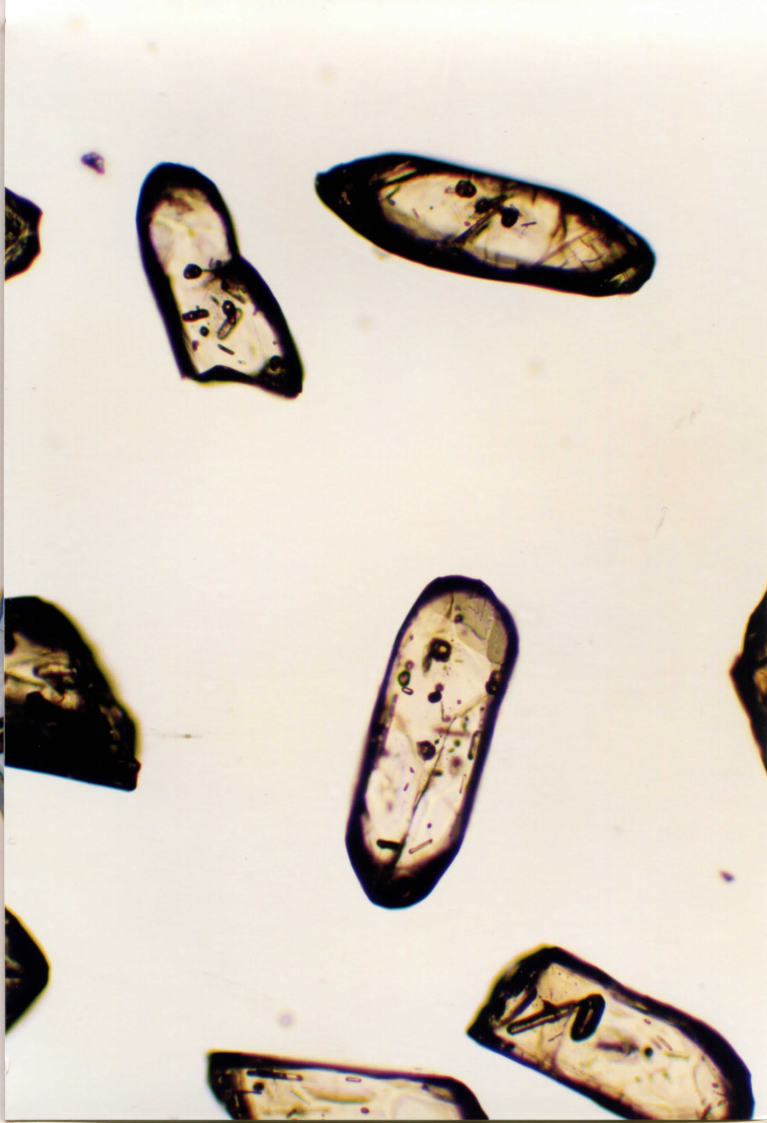
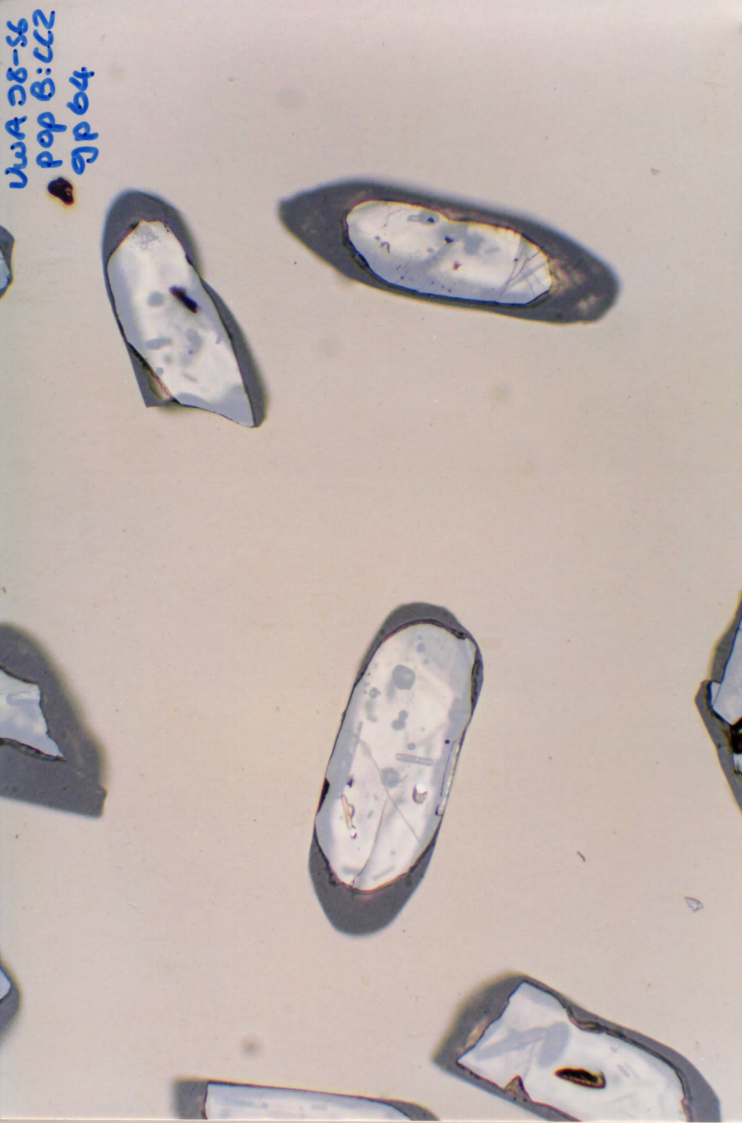
vwa 28-56  
pop B:CC2  
gp62



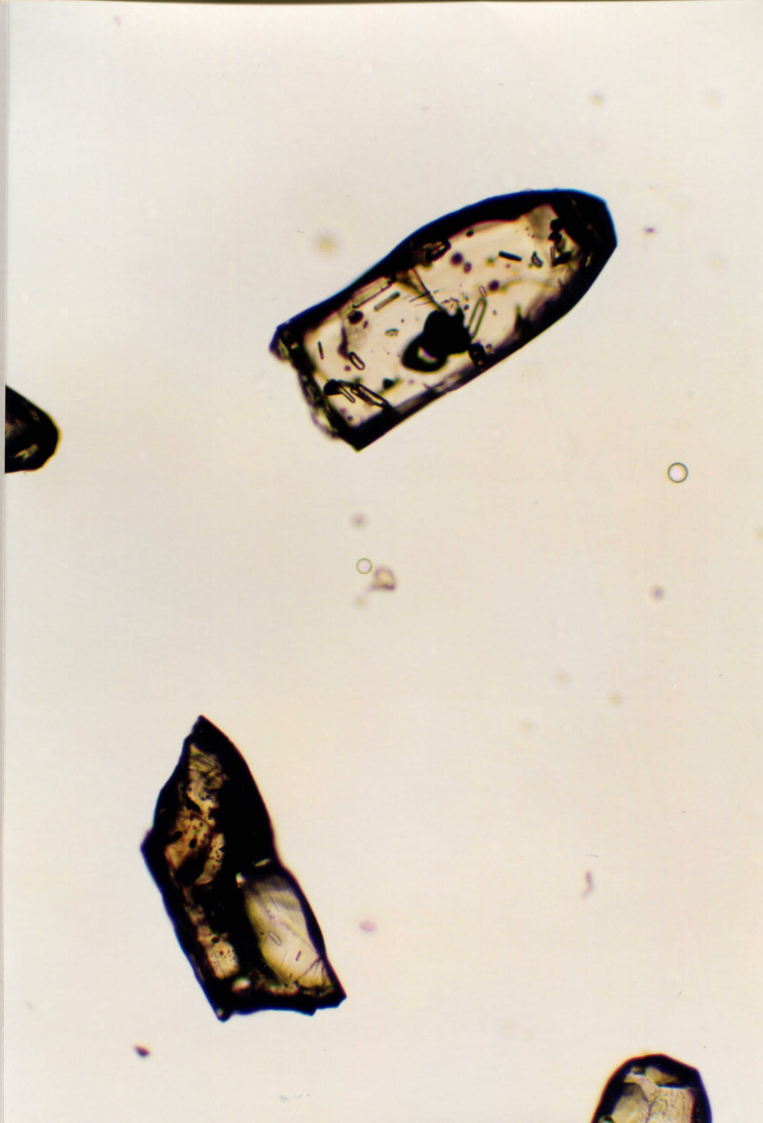
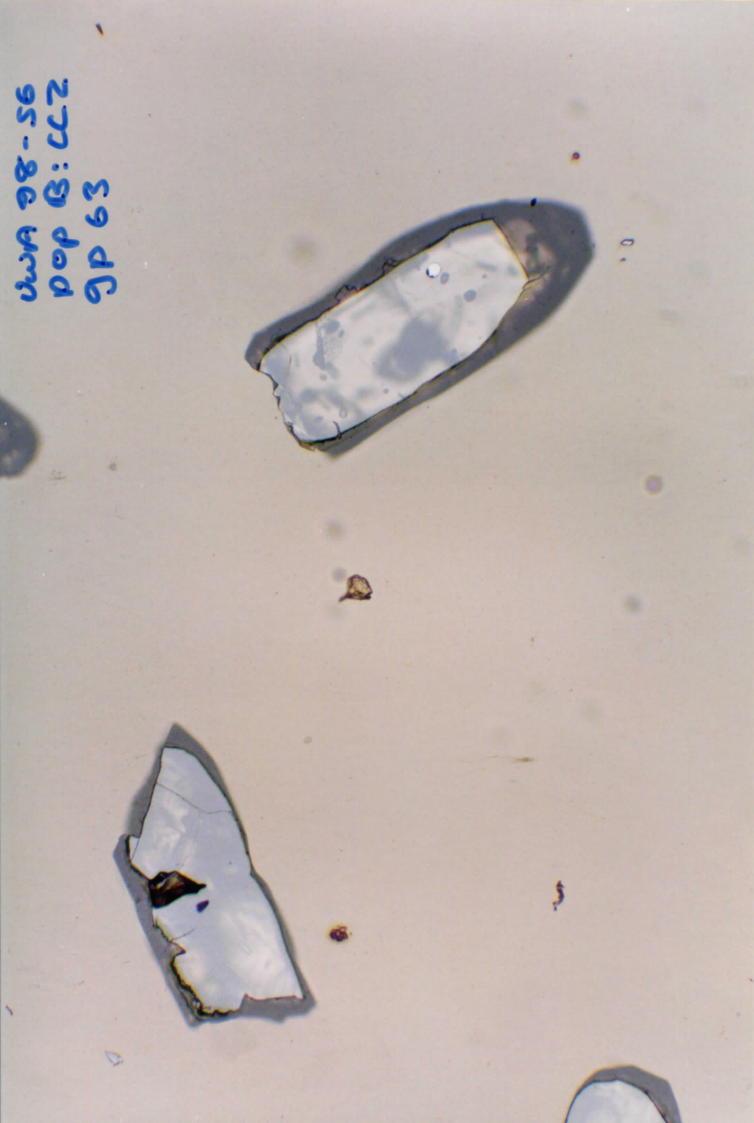
vwa 28-56  
pop B:CC2  
gp61



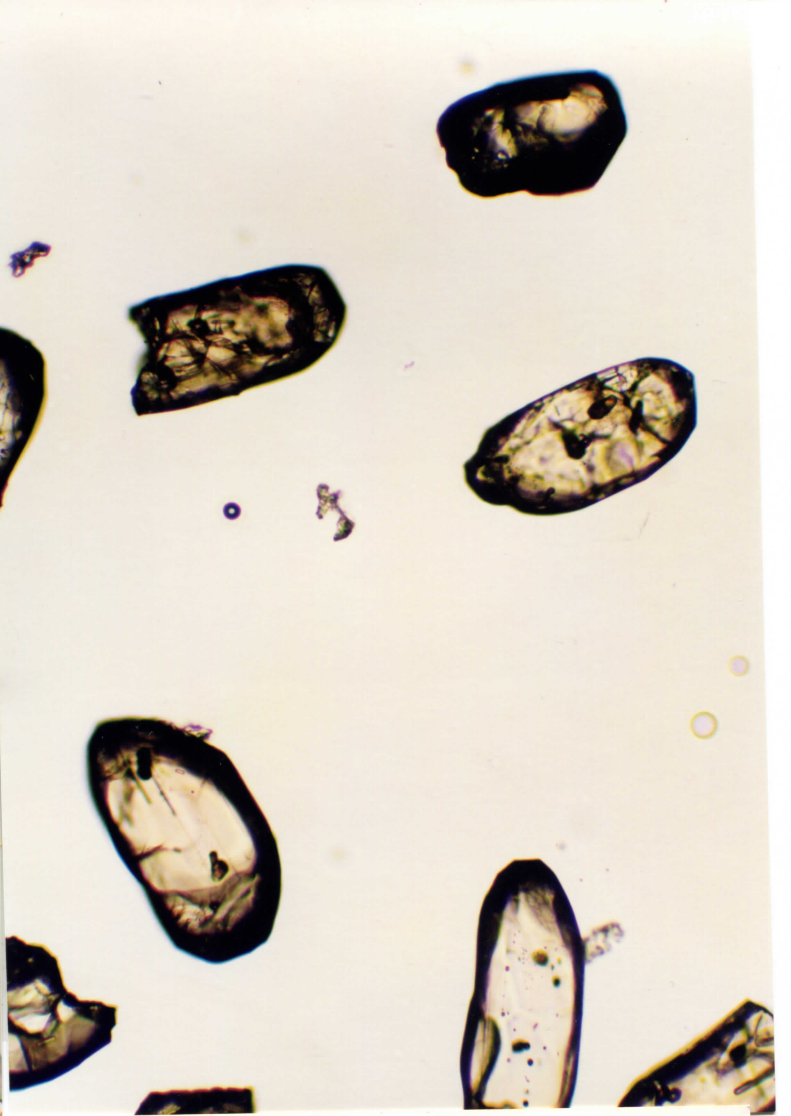
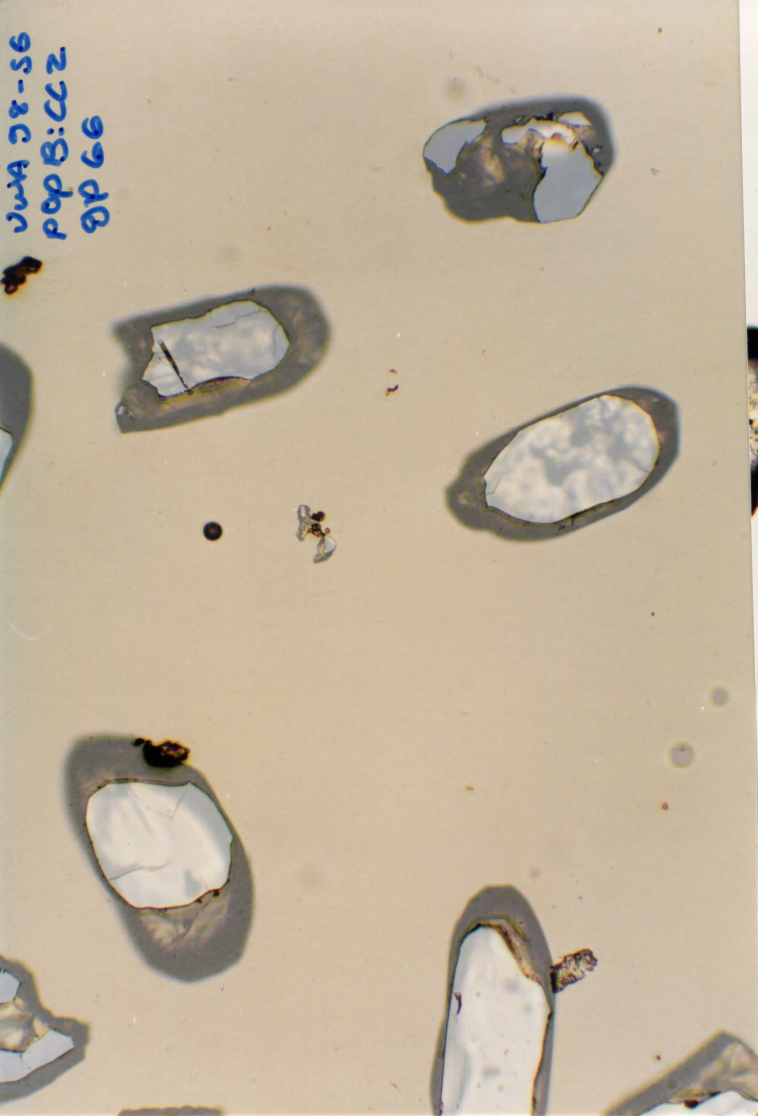
UWA 98-56  
Pop B: CC2  
JP 64



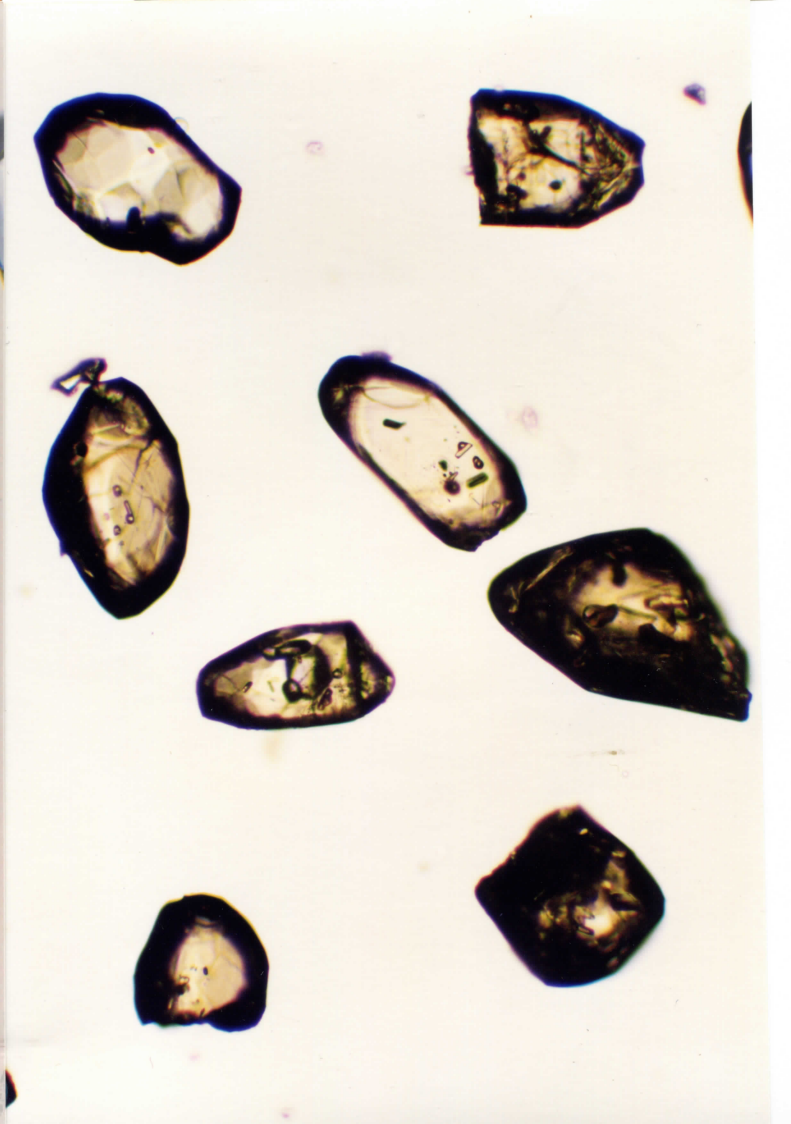
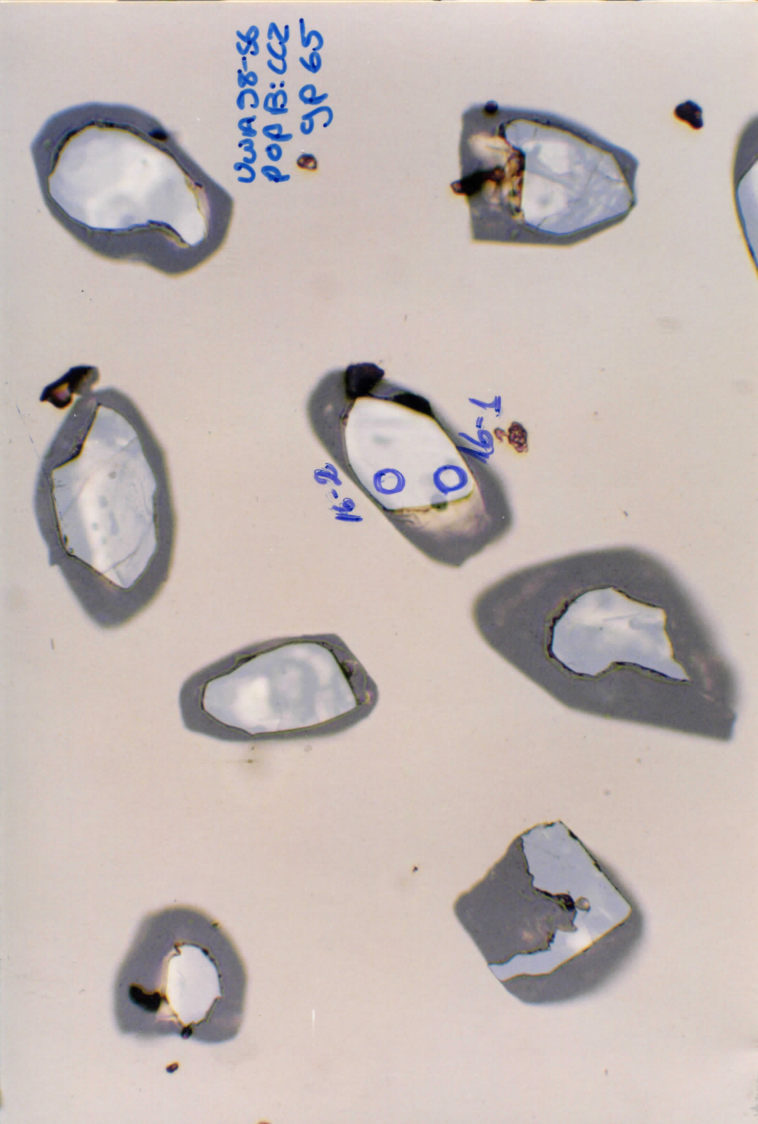
UWA 98-56  
Pop B: CC2  
JP 63

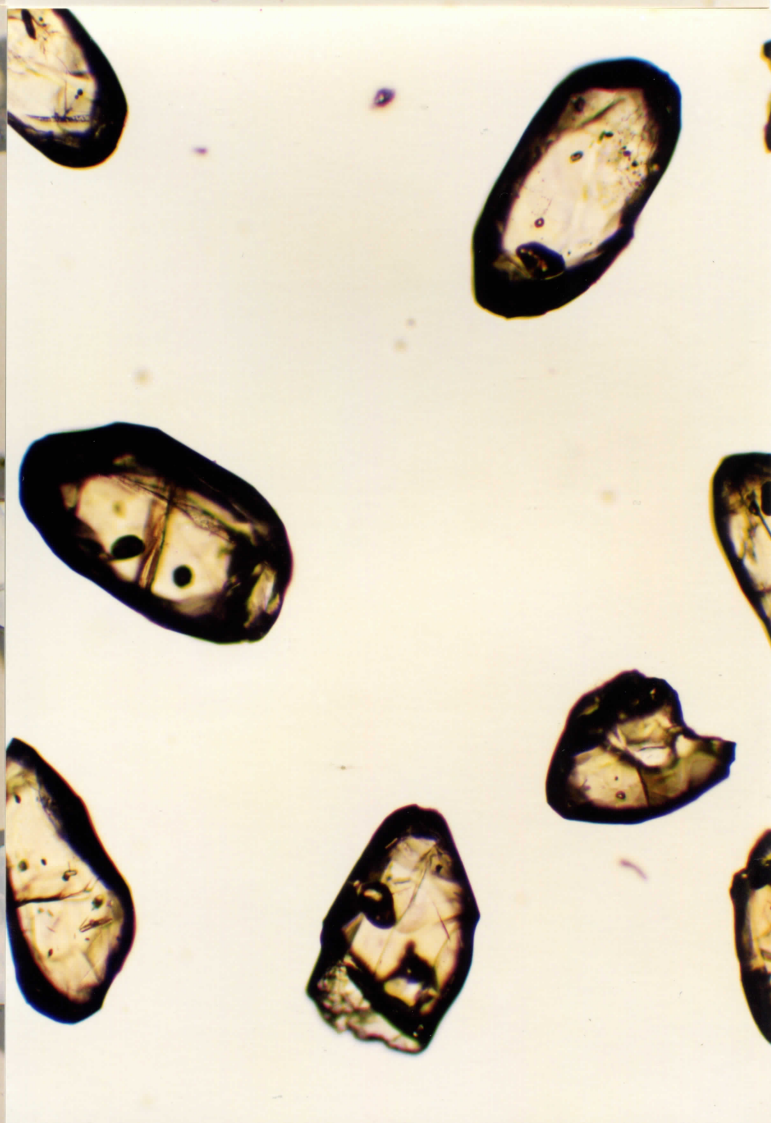
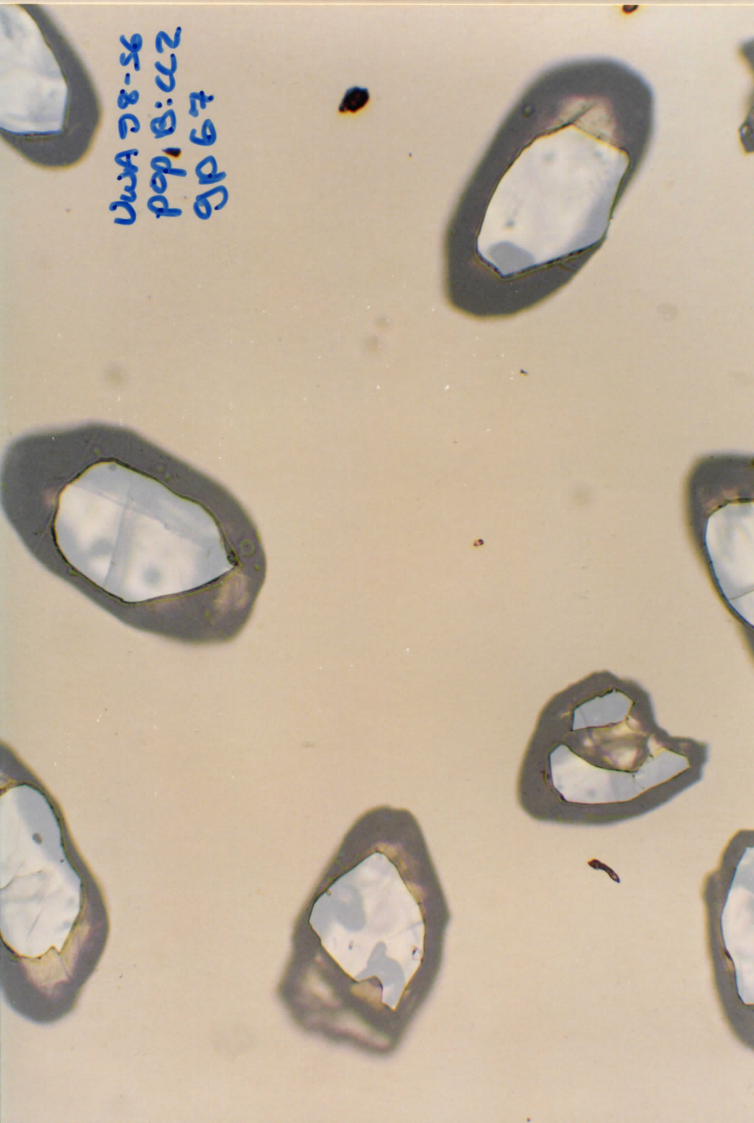
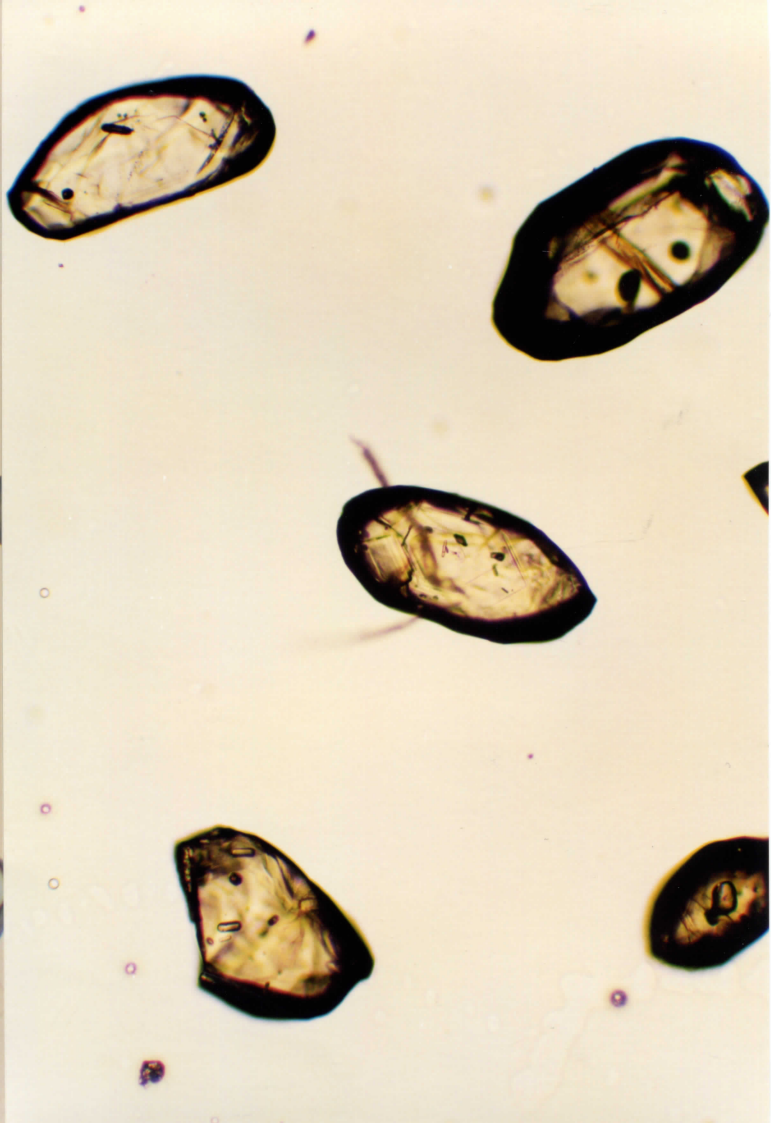
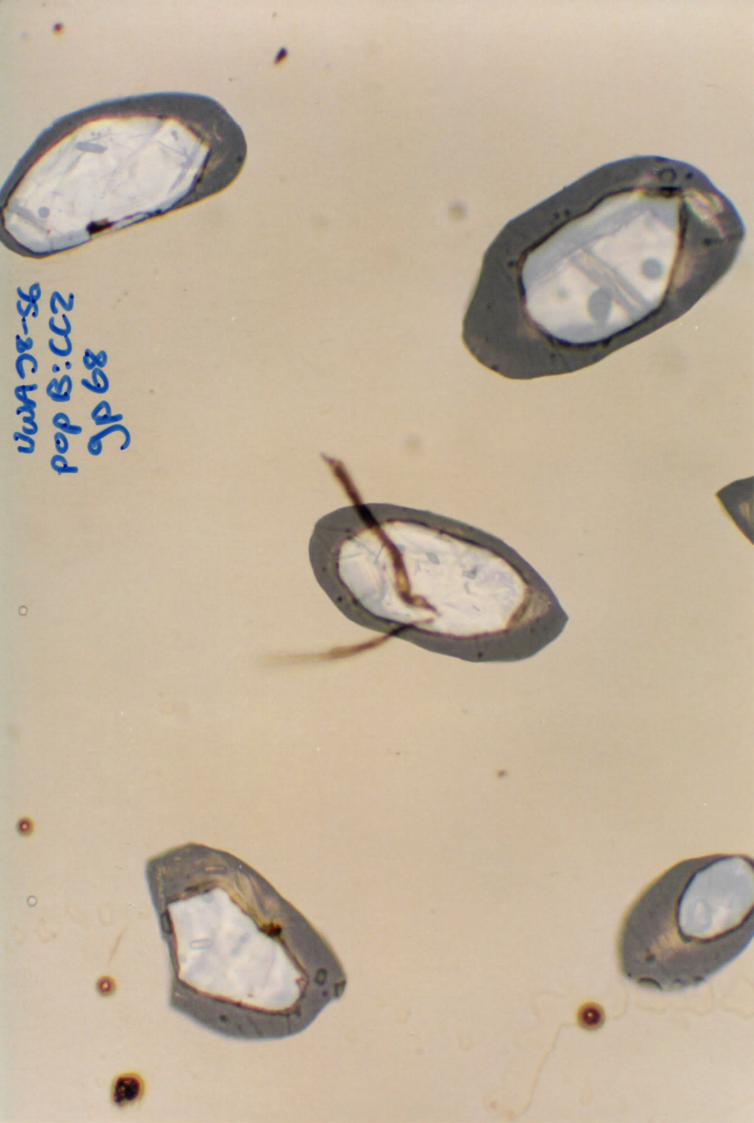


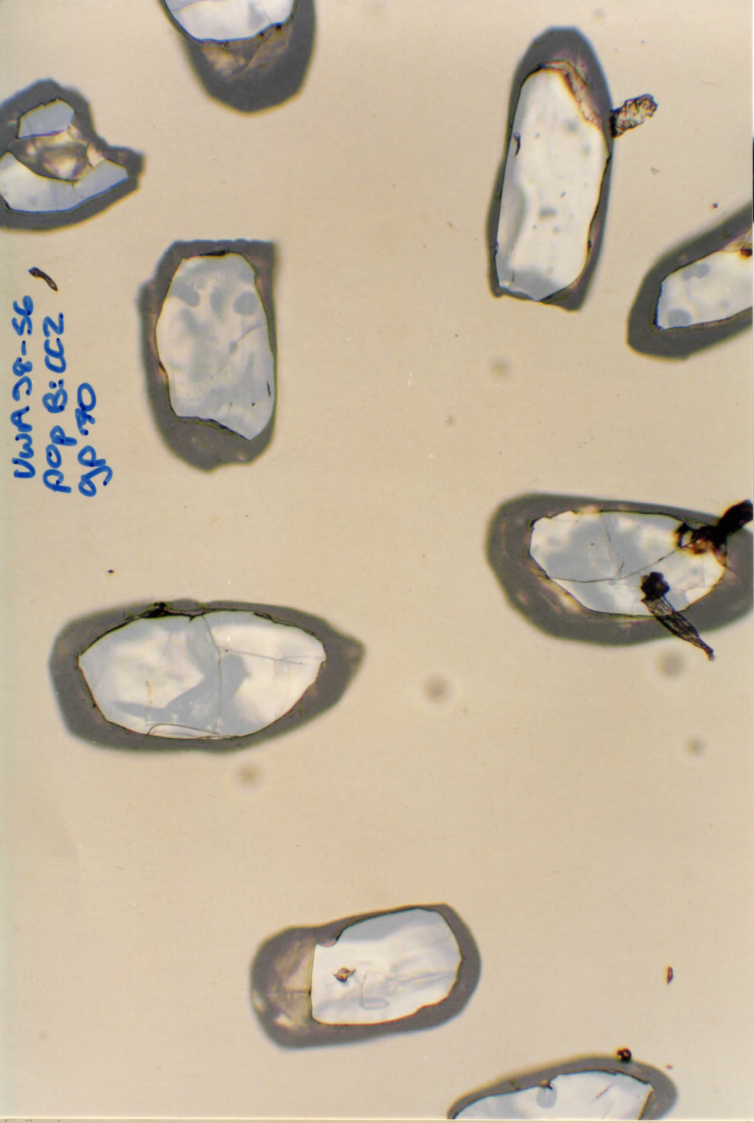
UWA 28-56  
POP B: CCZ  
9P 66



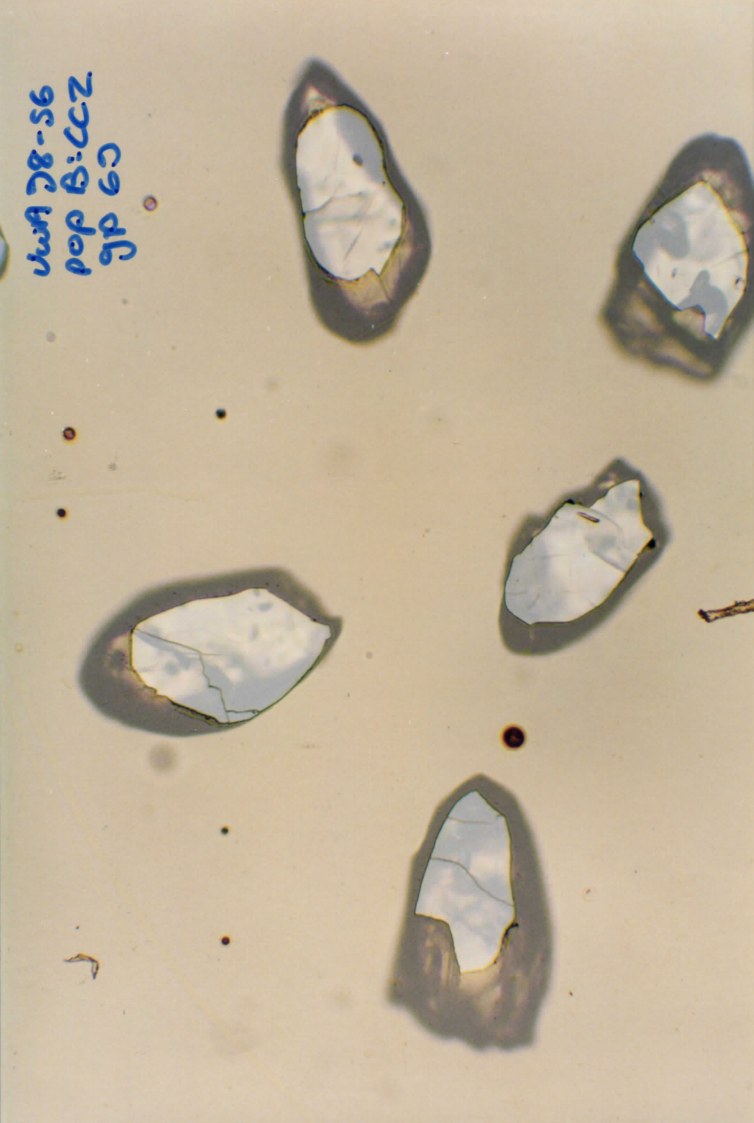
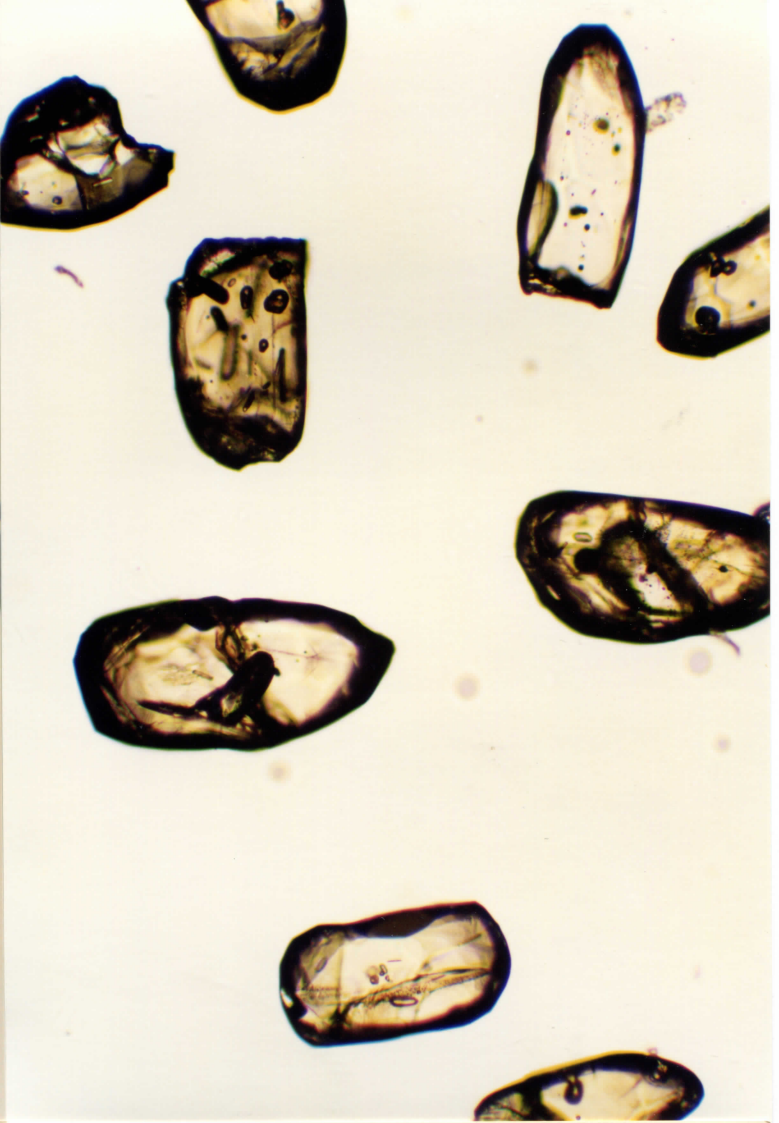
UWA 28-56  
POP B: CCZ  
9P 65



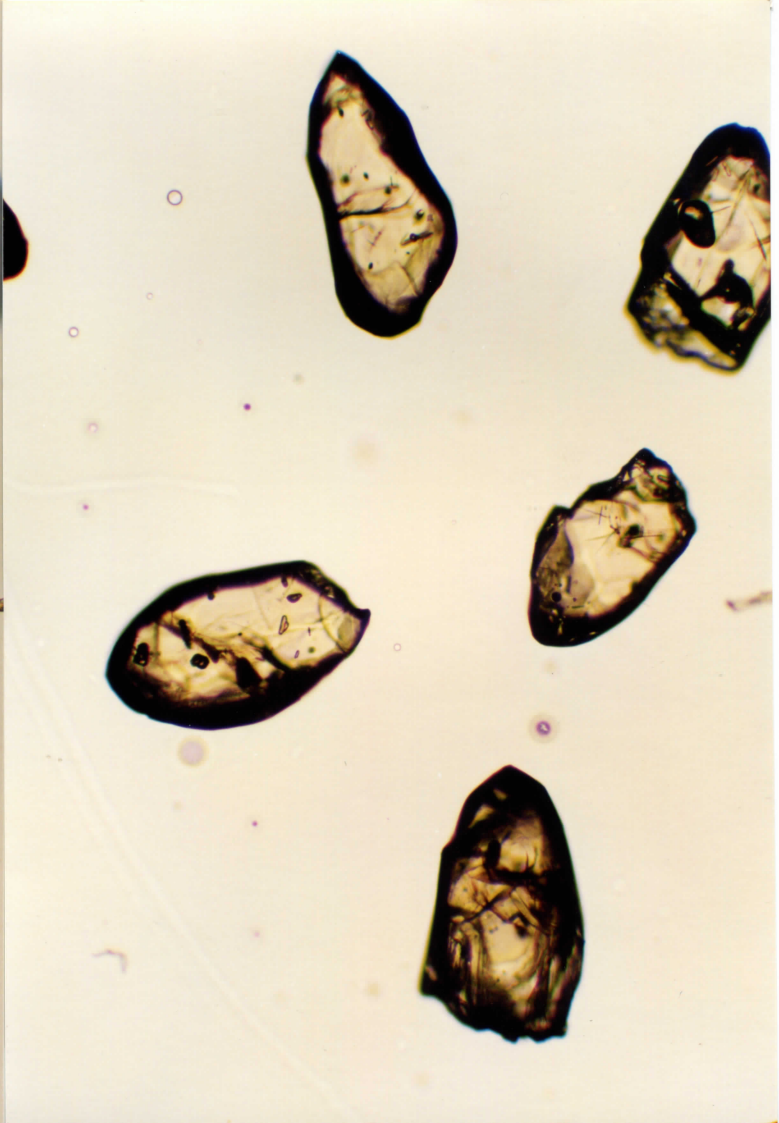




VWA 28-56  
Pop B:CCZ  
gp 70



VWA 28-56  
Pop B:CCZ  
gp 60

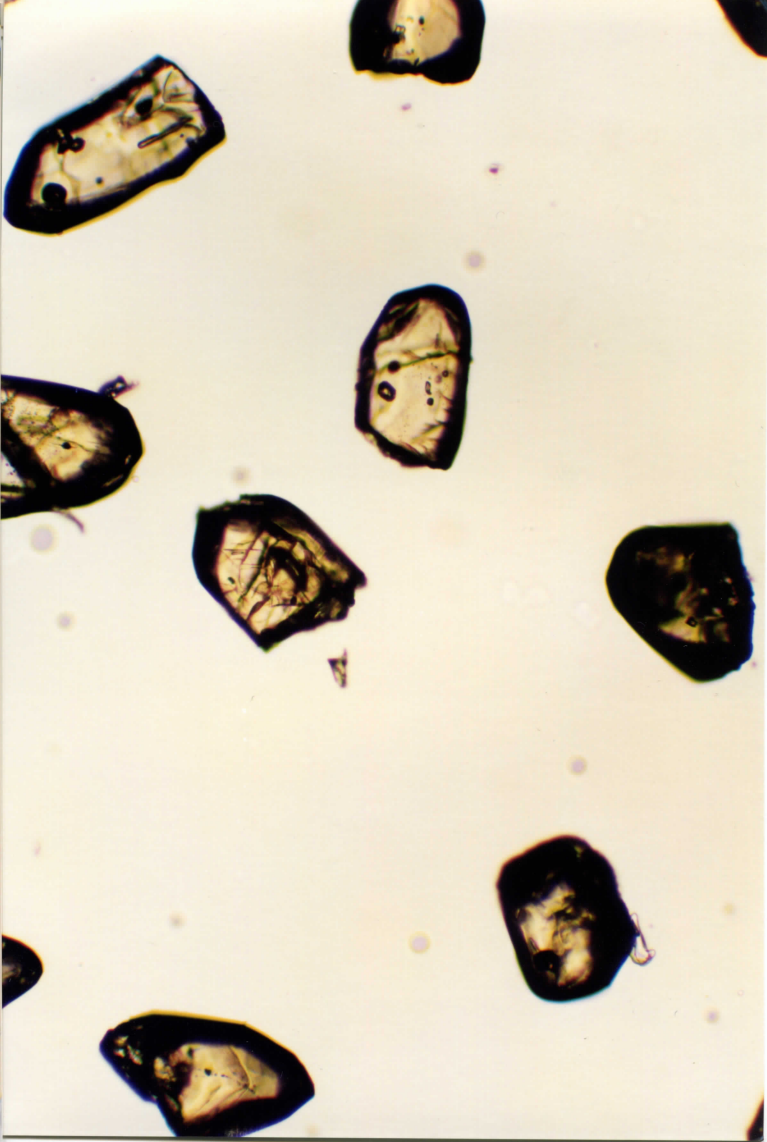
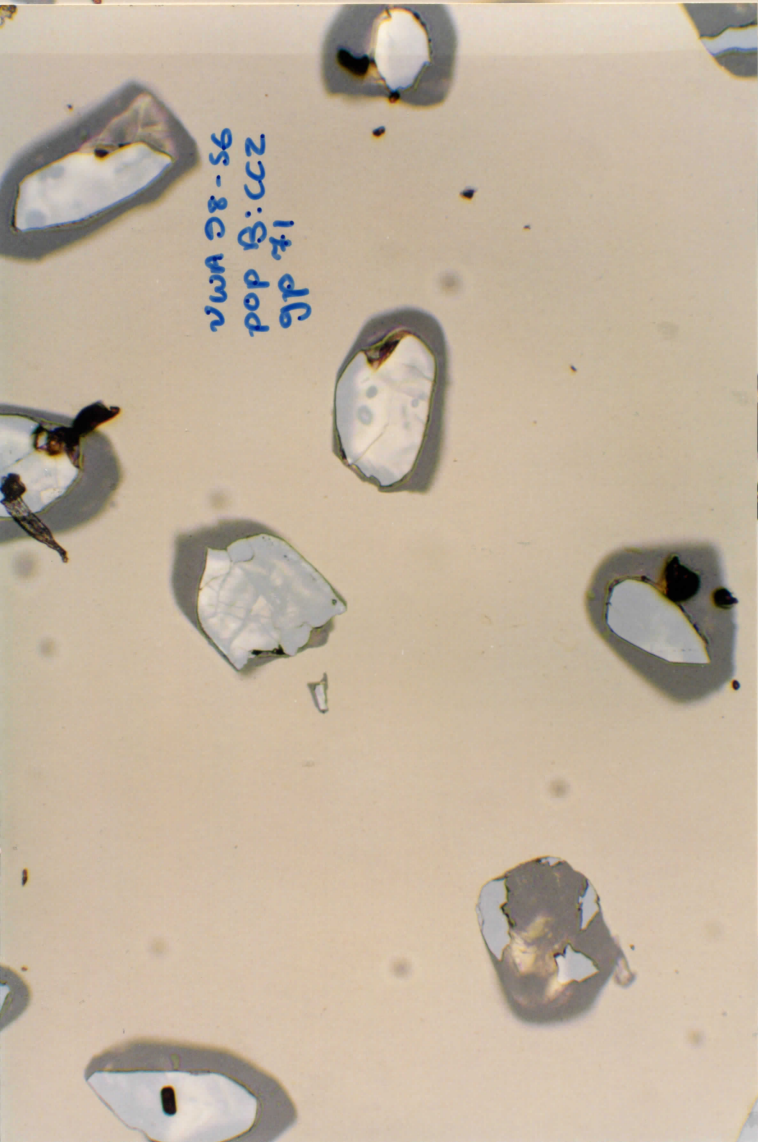


UWA 98-56  
pop B: CCZ  
gp 72

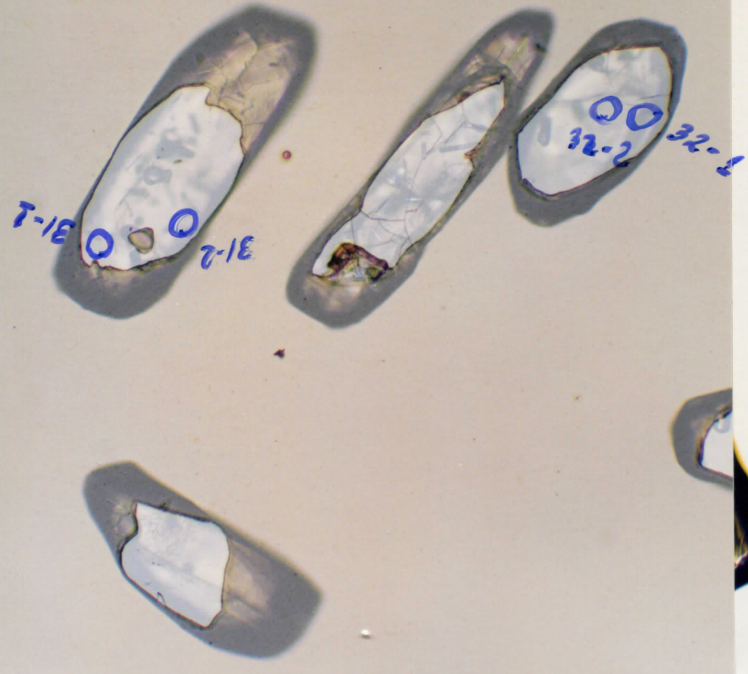
15-10  
15-3  
2-5-2



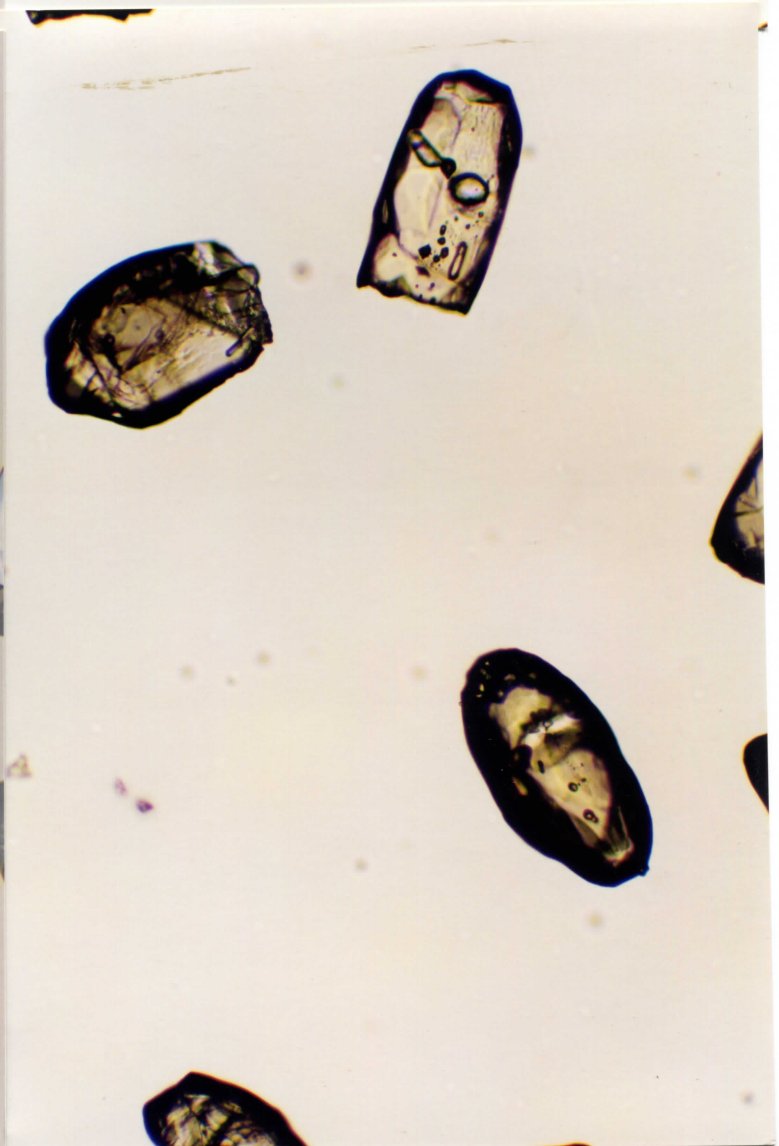
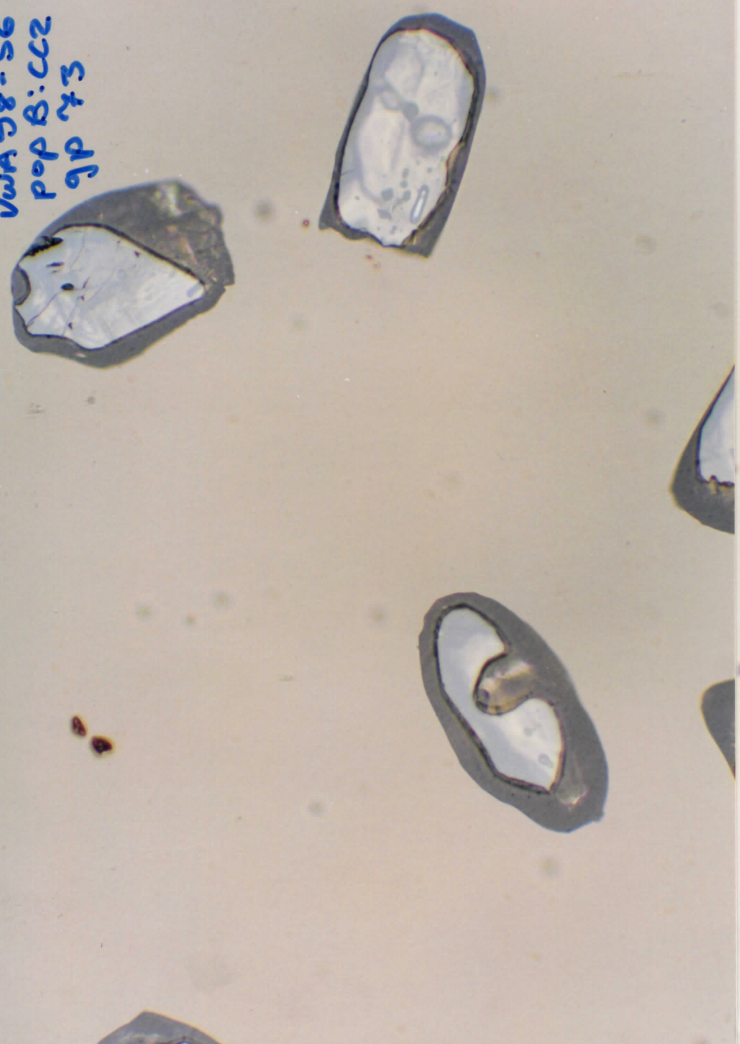
UWA 98-56  
pop B: CCZ  
gp 71



VWA 28-56  
Pop B: CC2  
gp 74



VWA 28-56  
Pop B: CC2  
gp 73



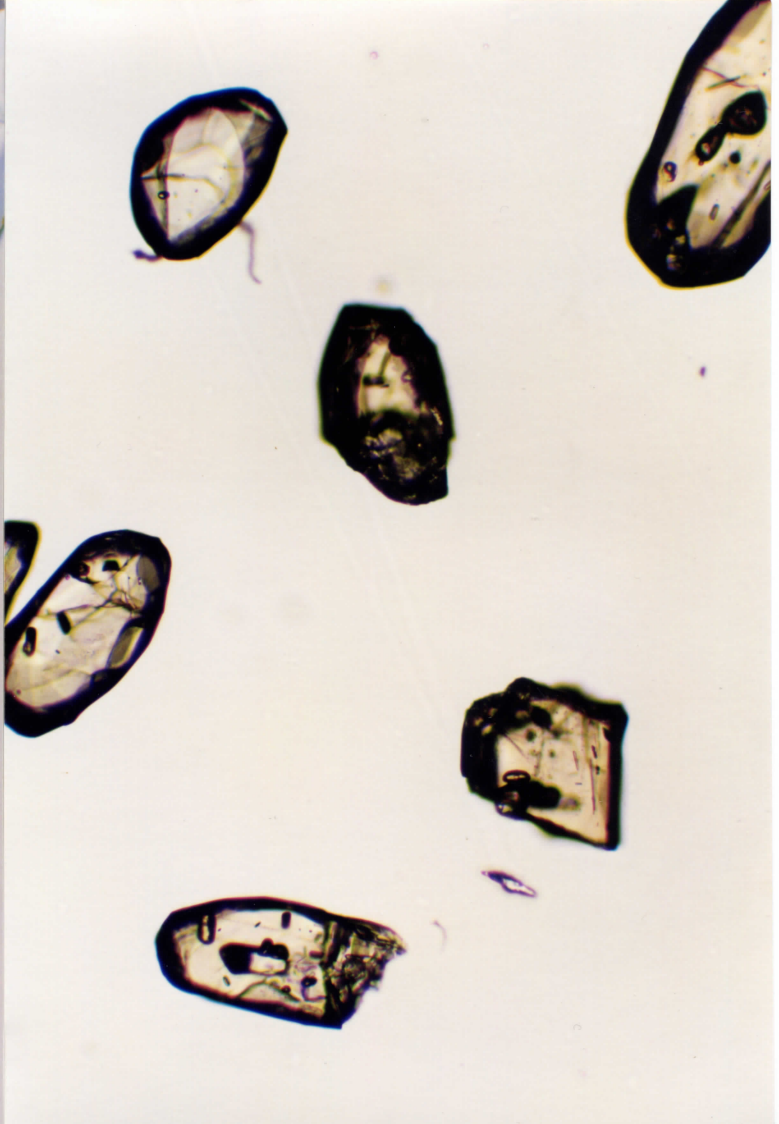
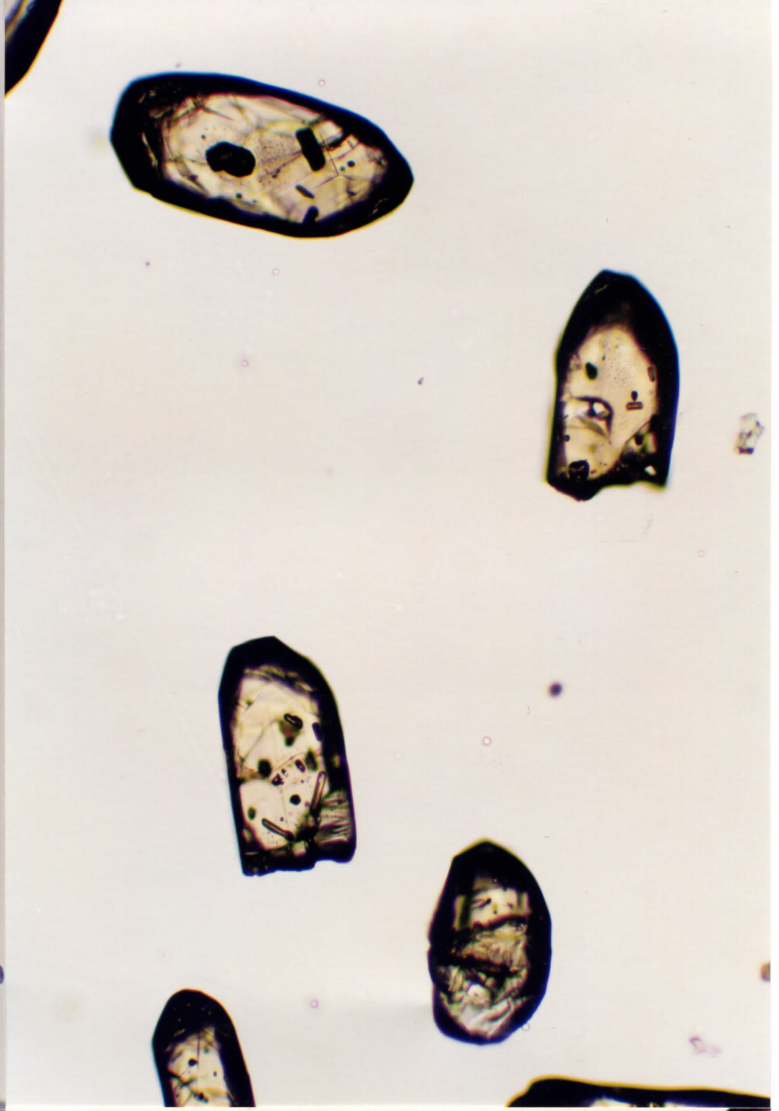
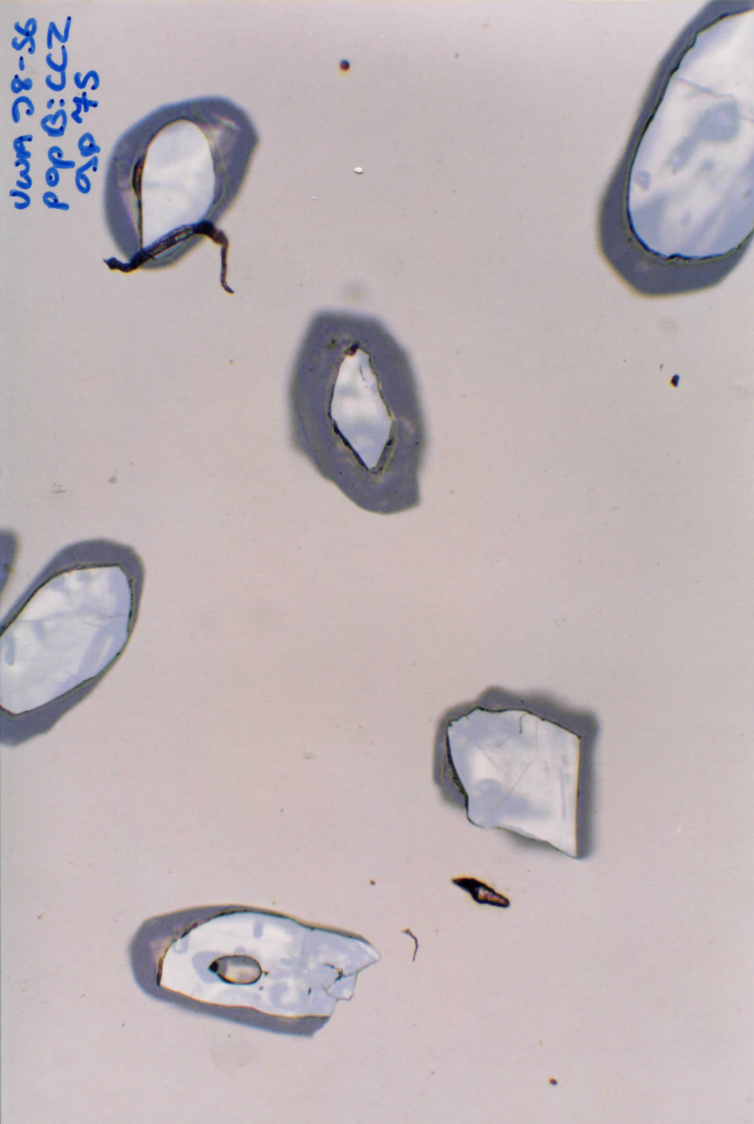


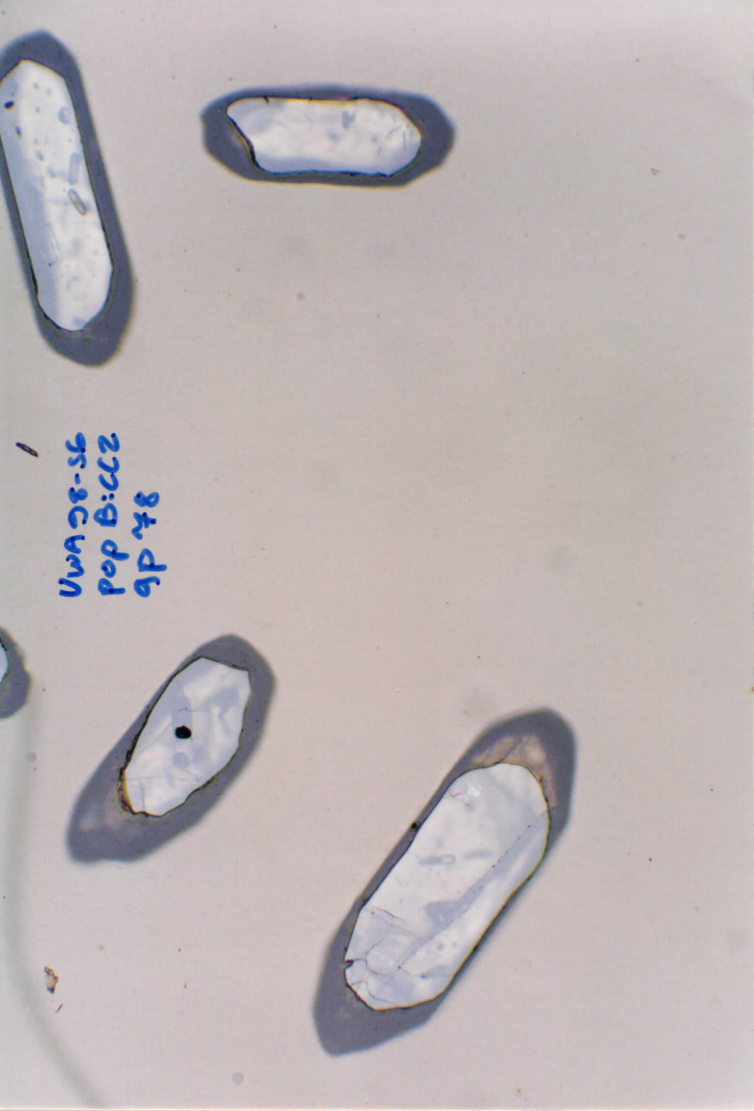
94. dl  
277:8: dcd  
95-8C Wm



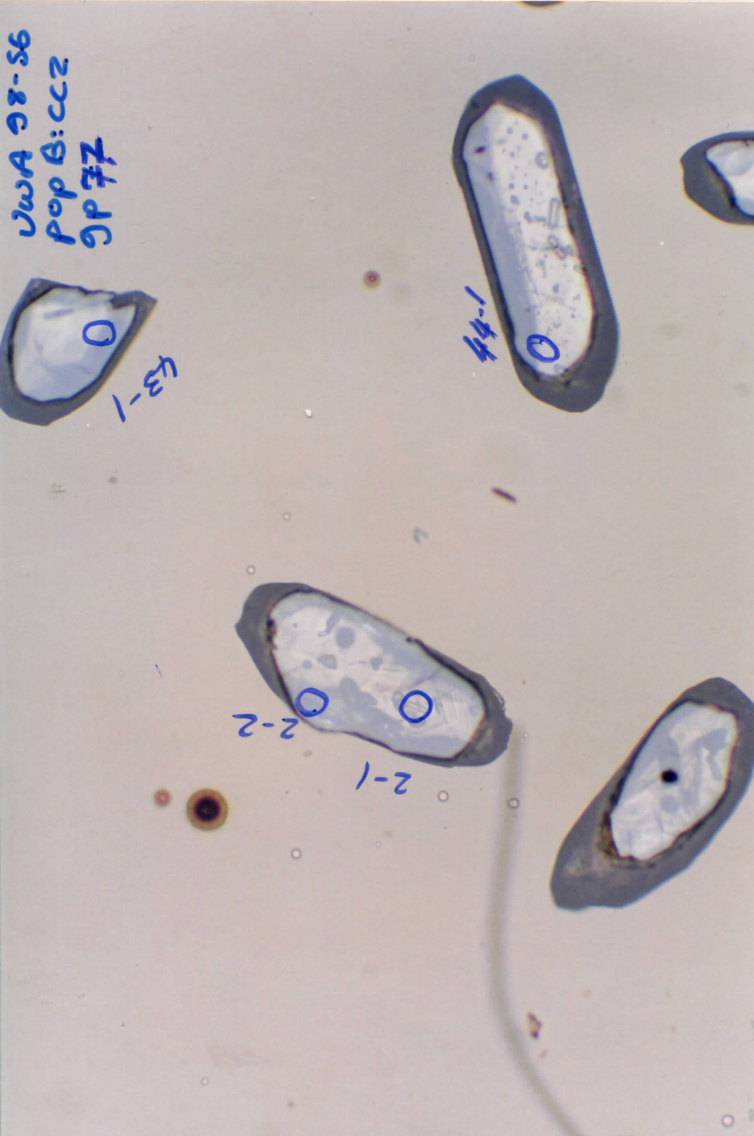
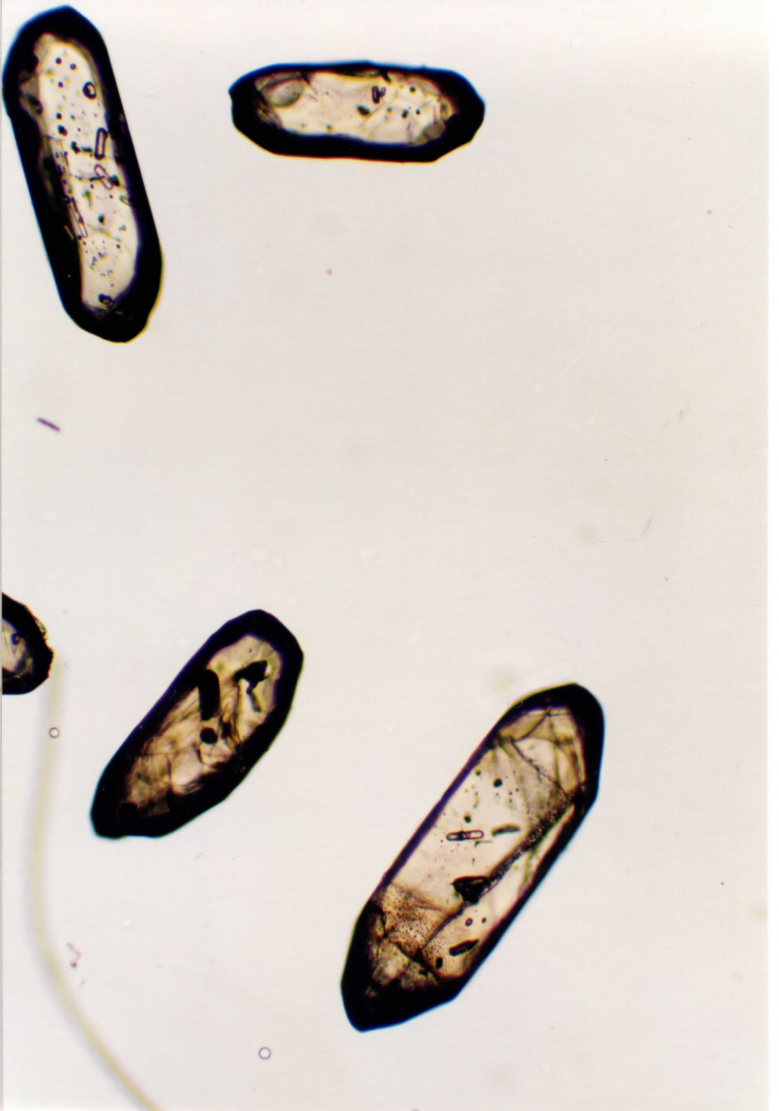
33-1

St. dlo  
277:8: dcd  
95-8C Wm

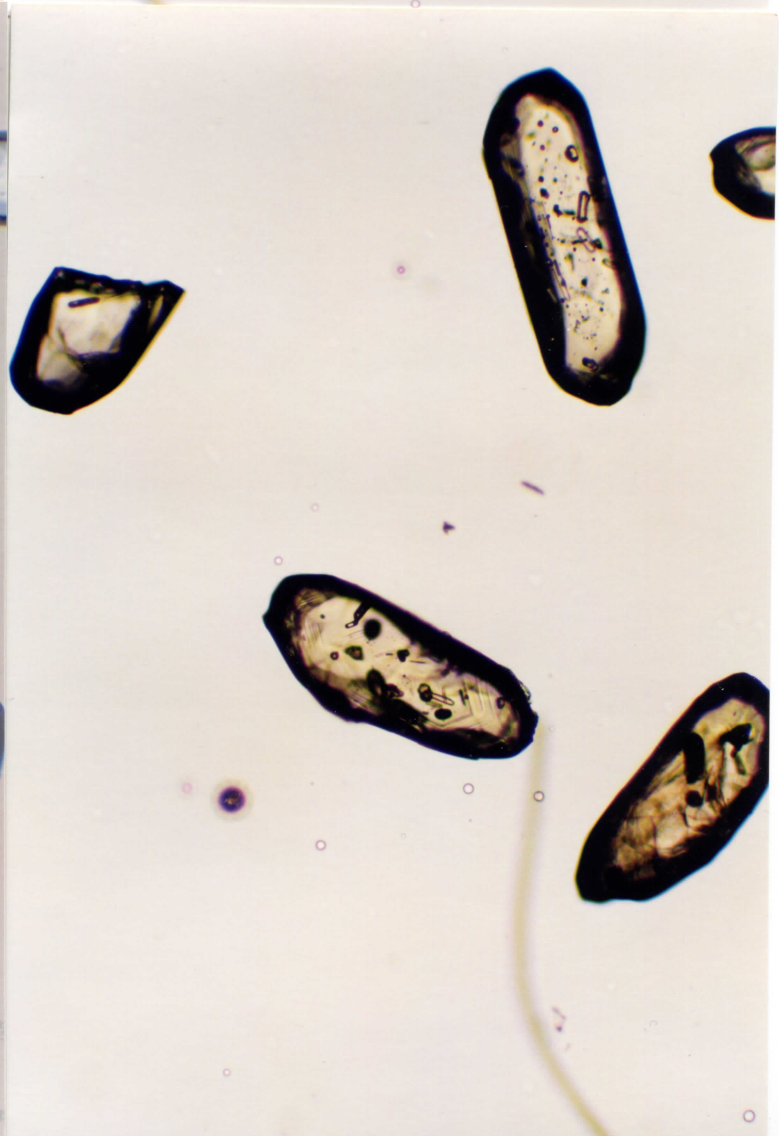


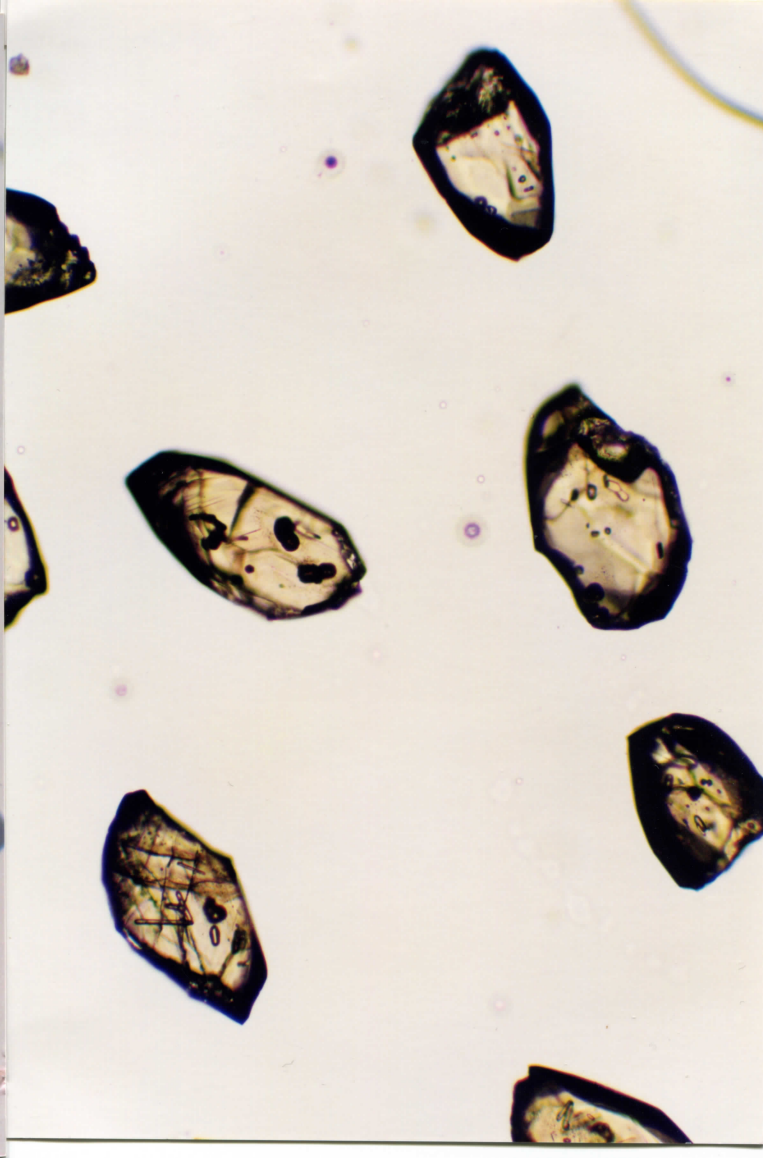
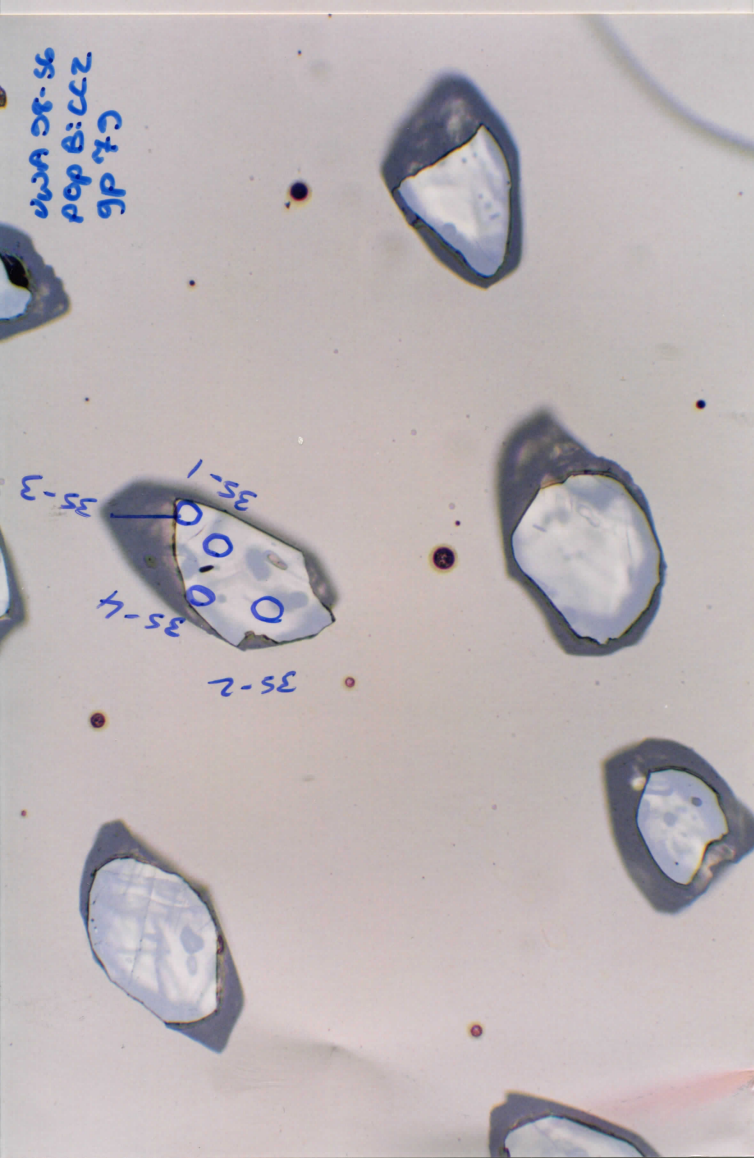
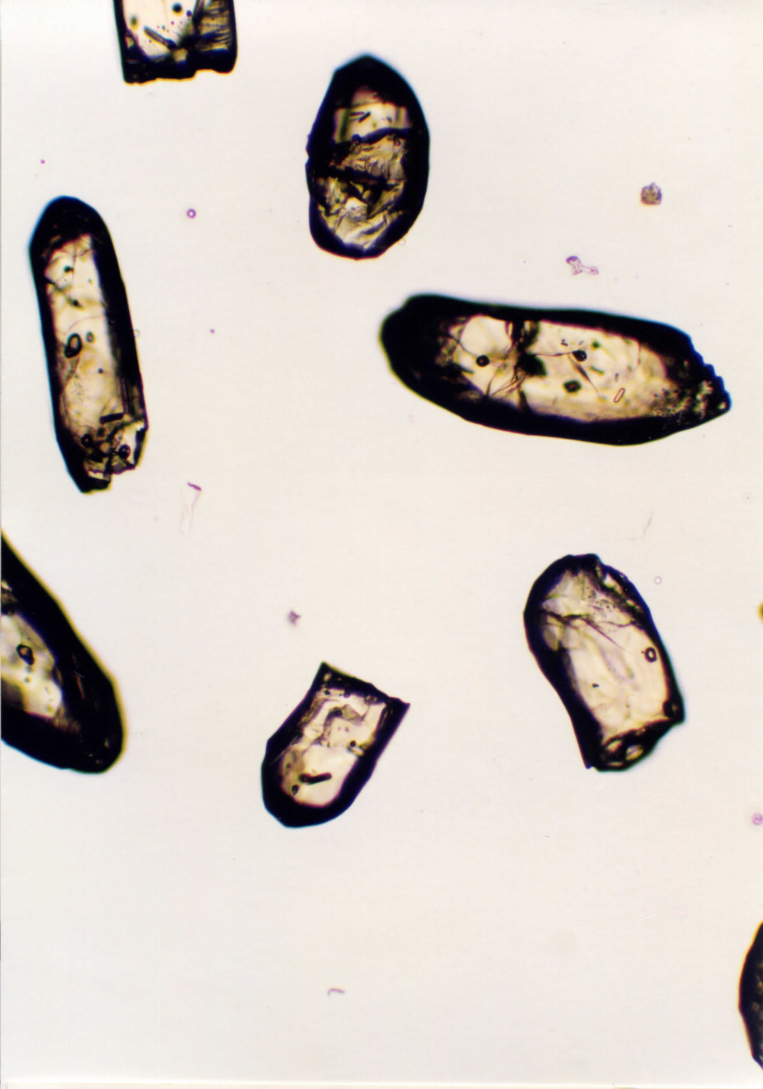
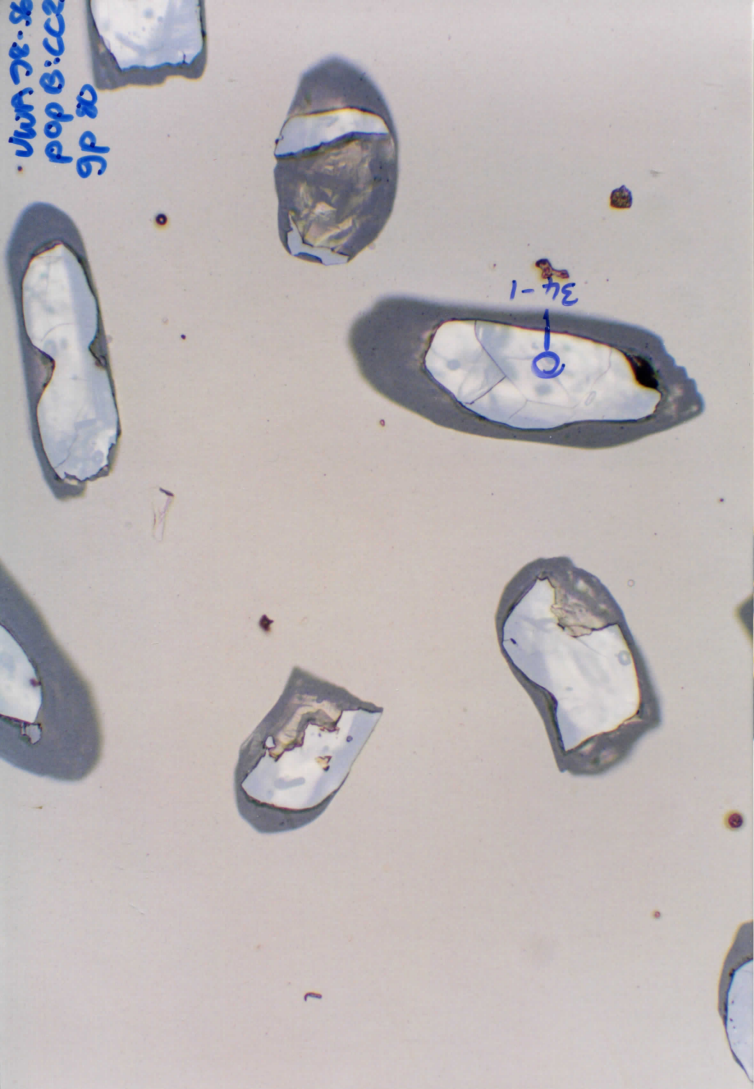


UWA 98-56  
Pop B:CCZ  
9P 78

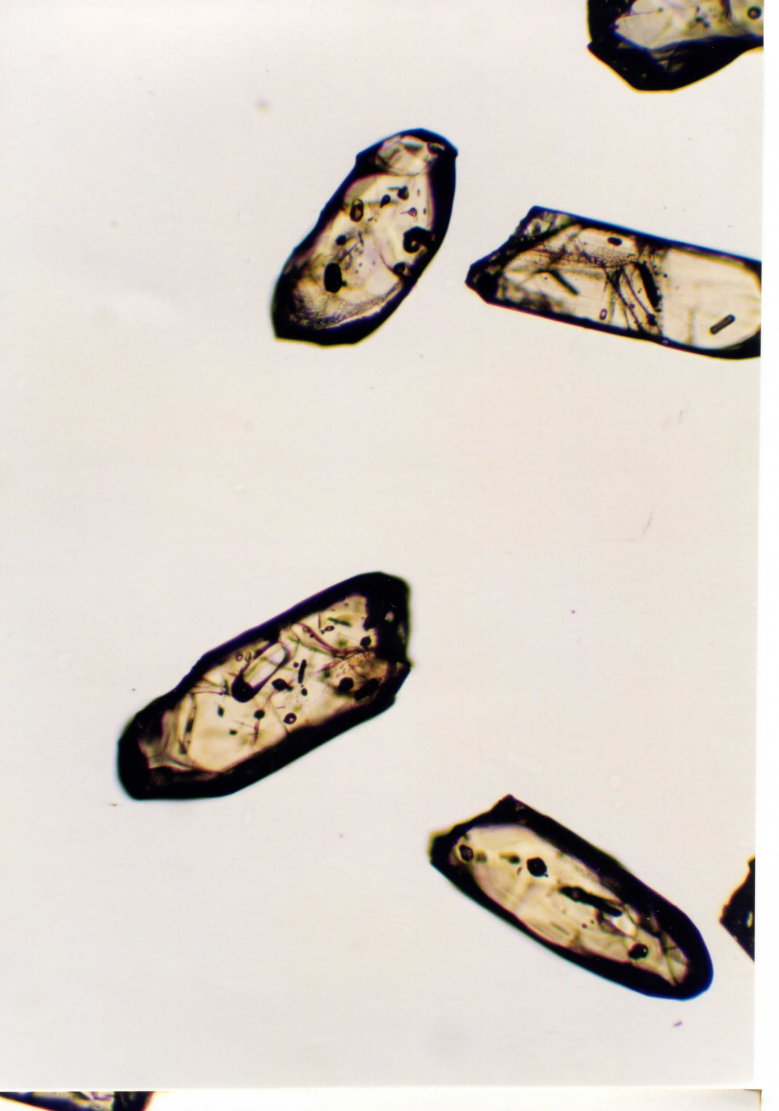
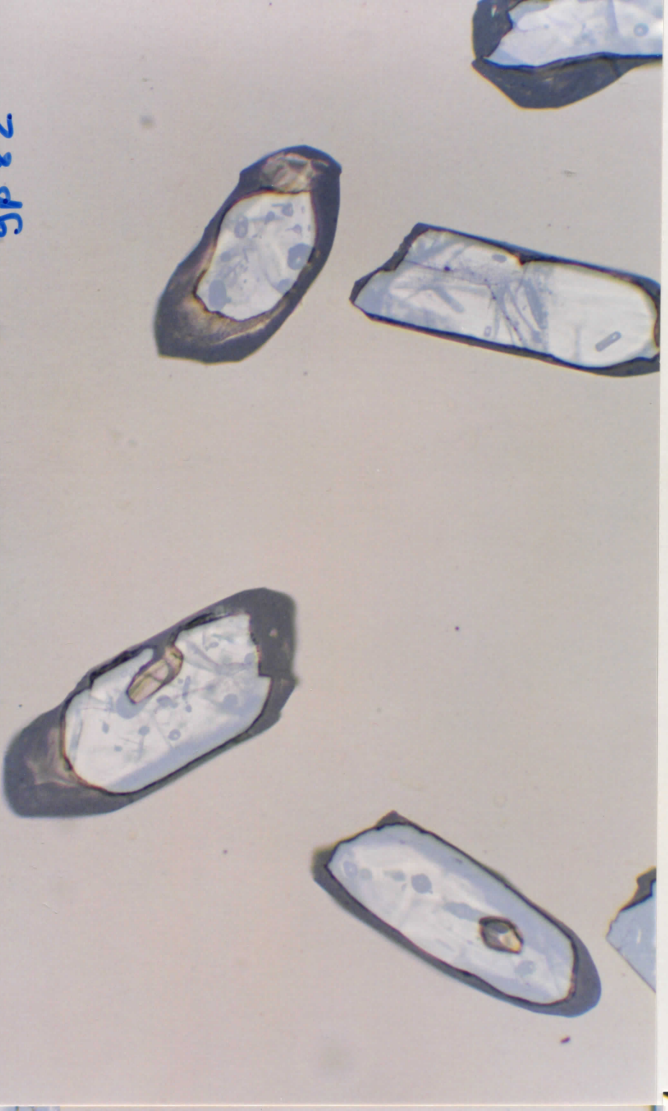


UWA 98-56  
Pop B:CCZ  
9P 77

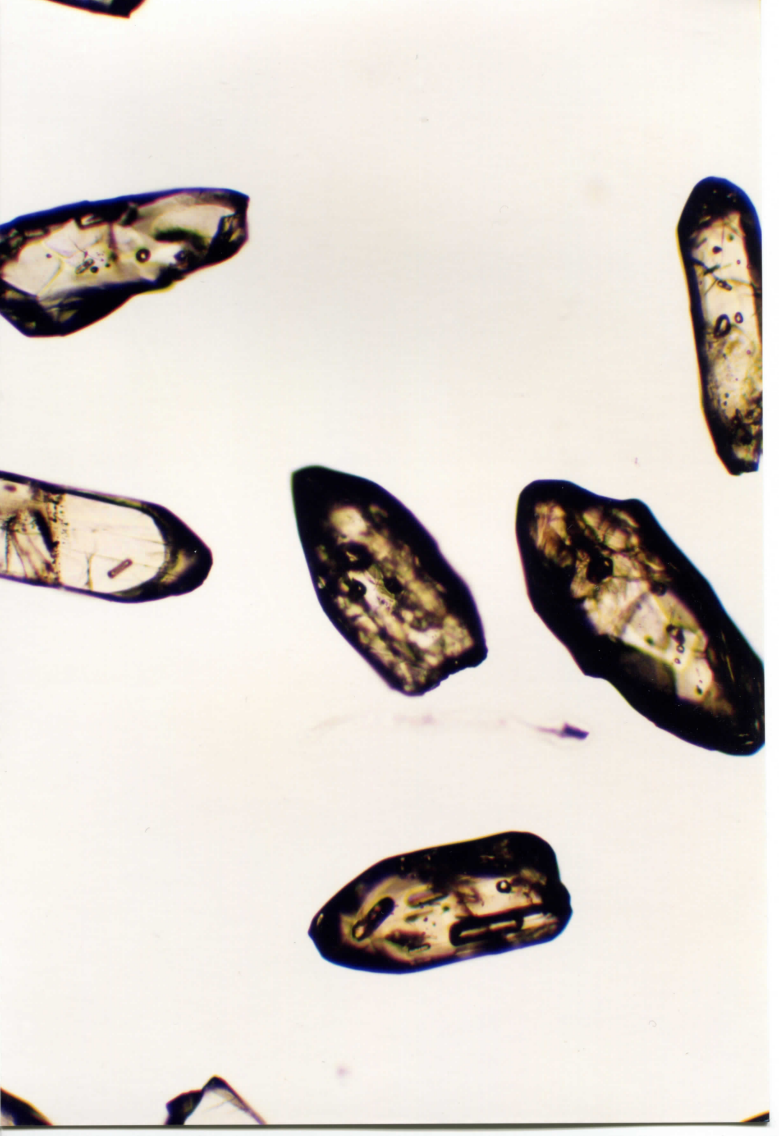
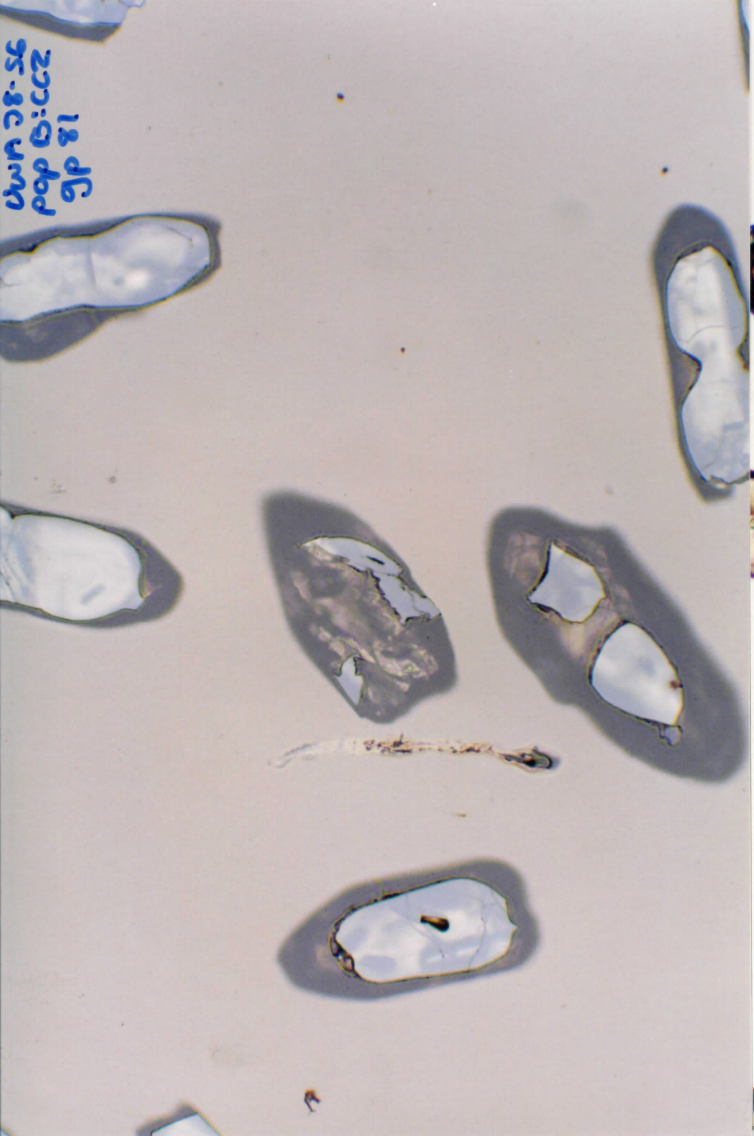


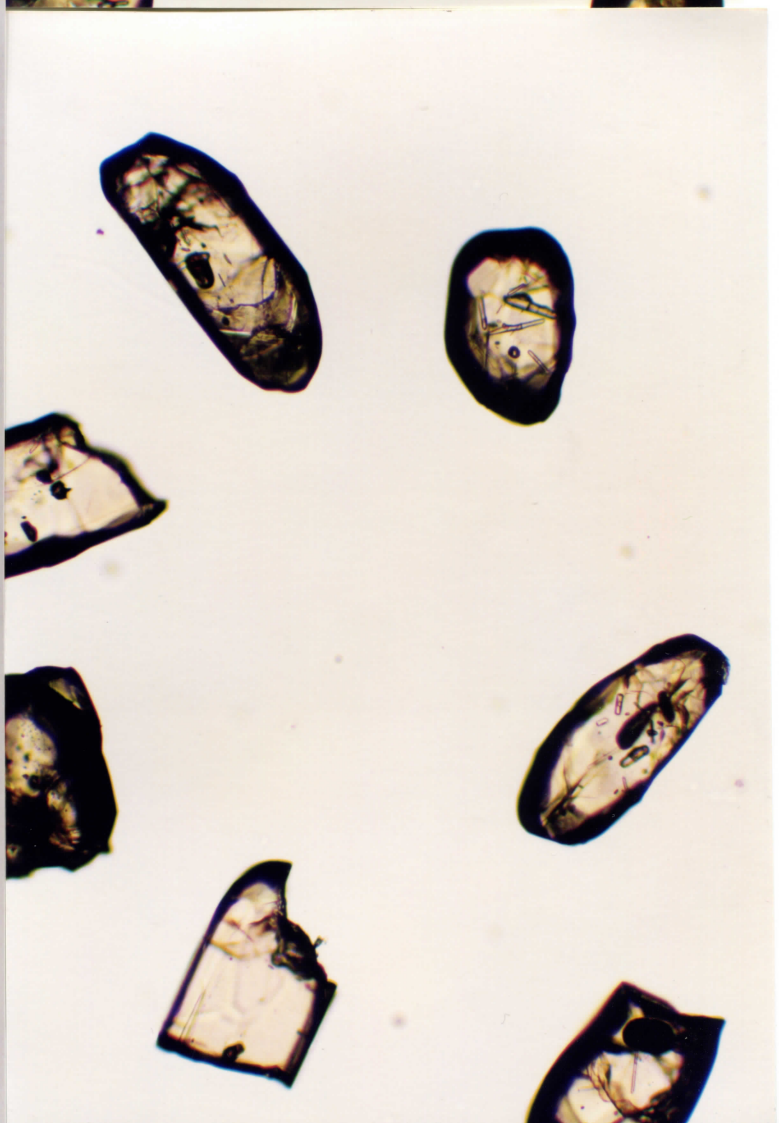
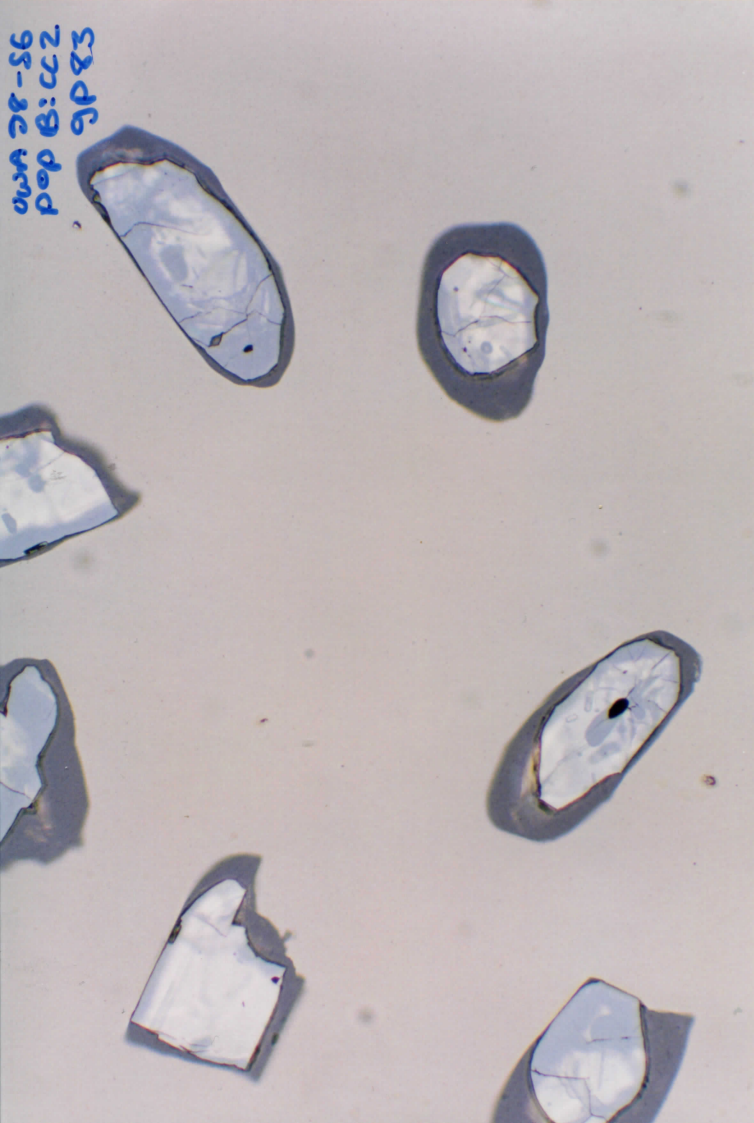
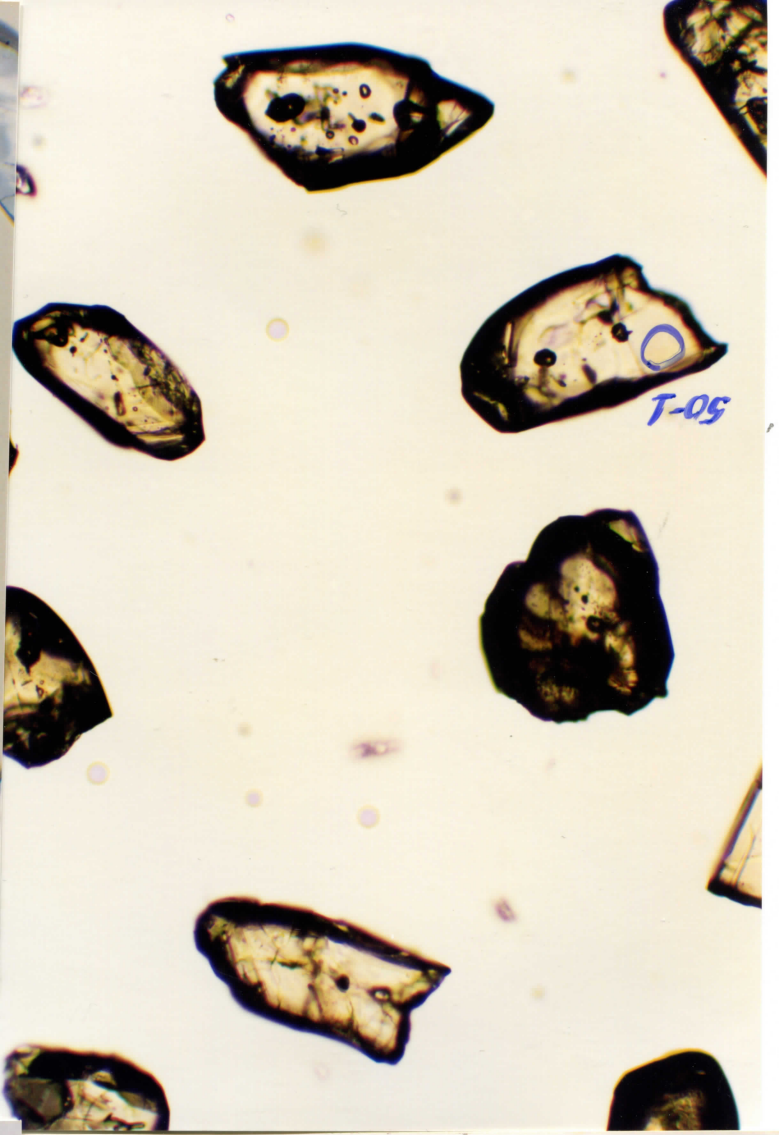
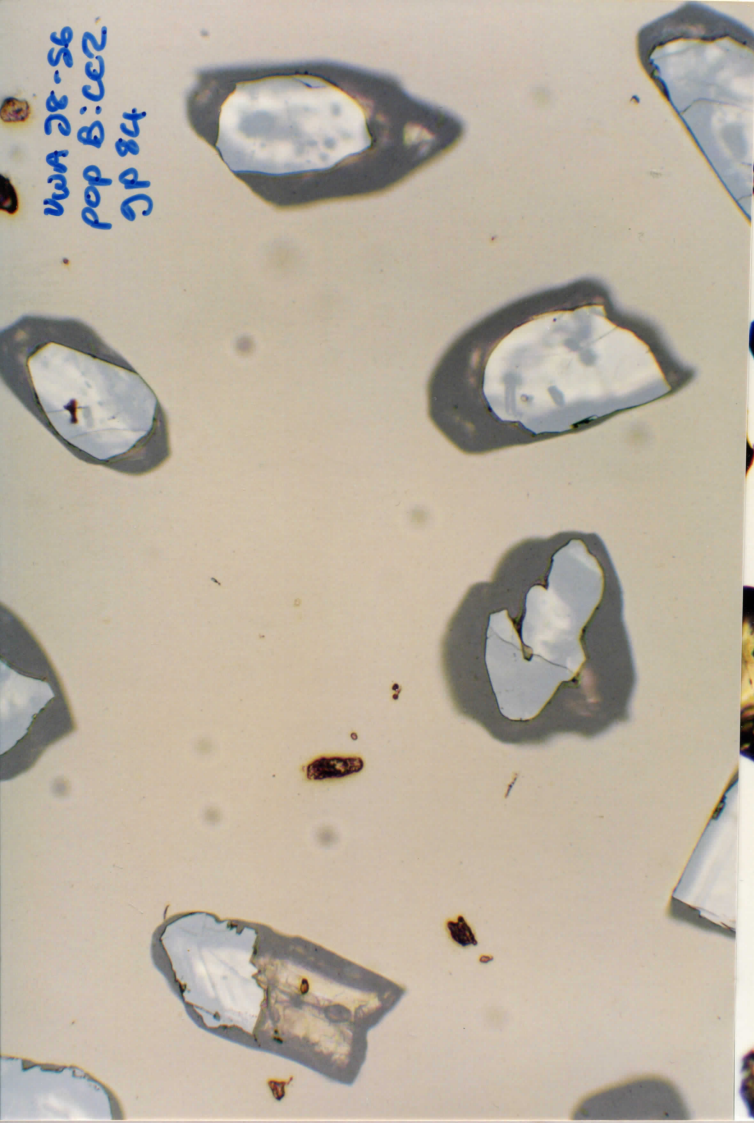


UWA 28-56  
pop B:CC2  
gp 82

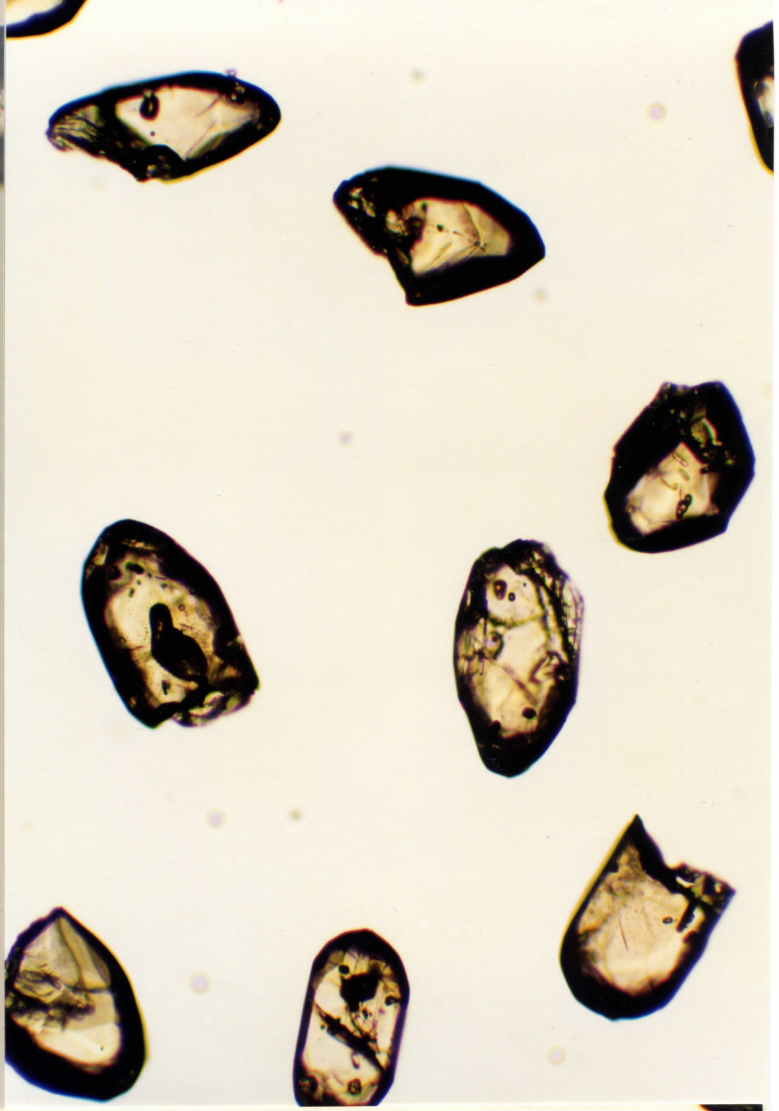
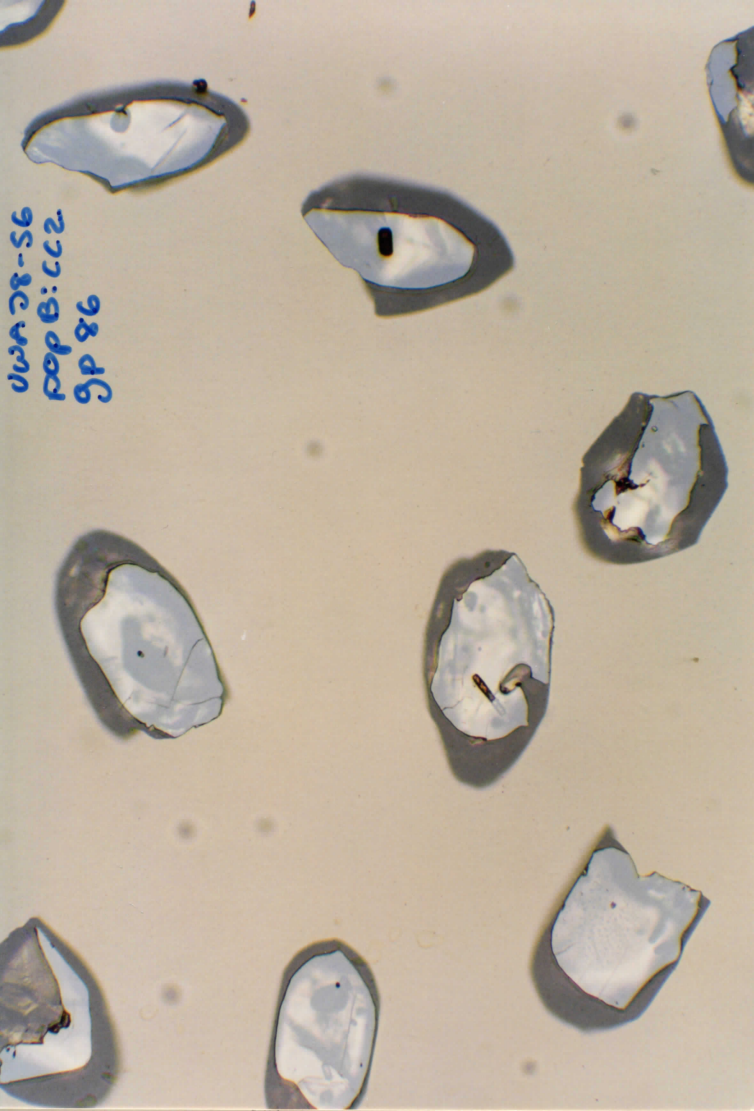


UWA 28-56  
pop B:CC2  
gp 81

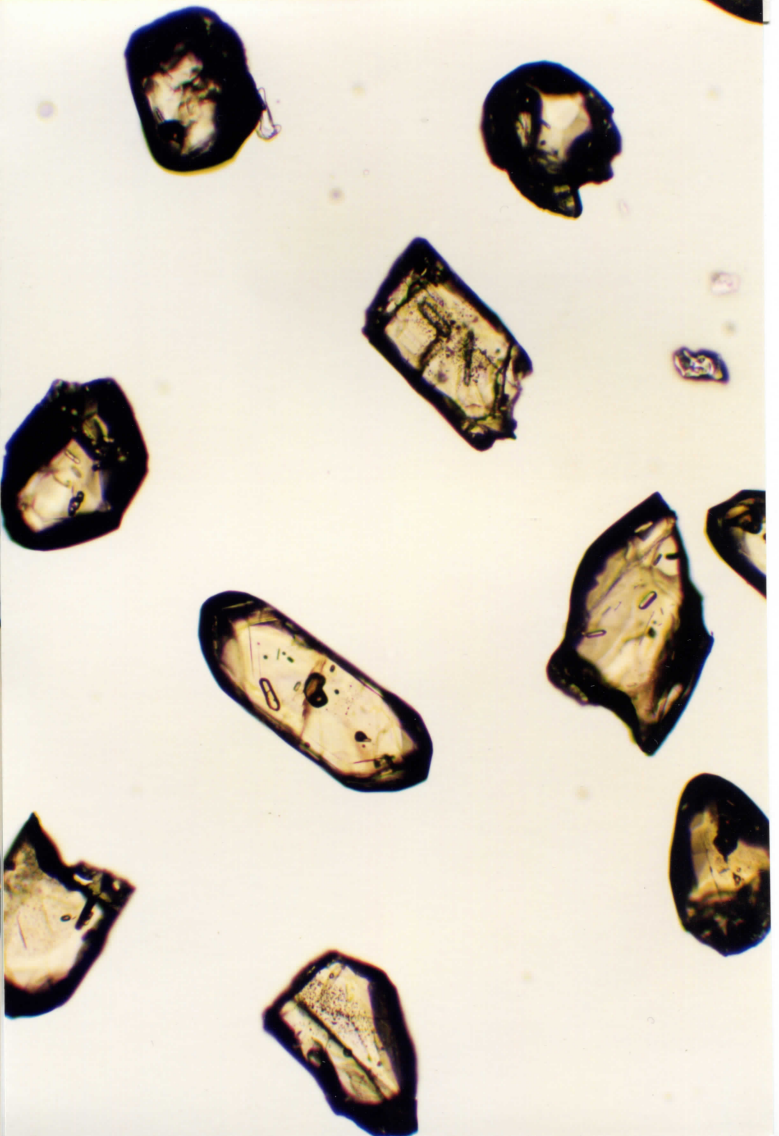
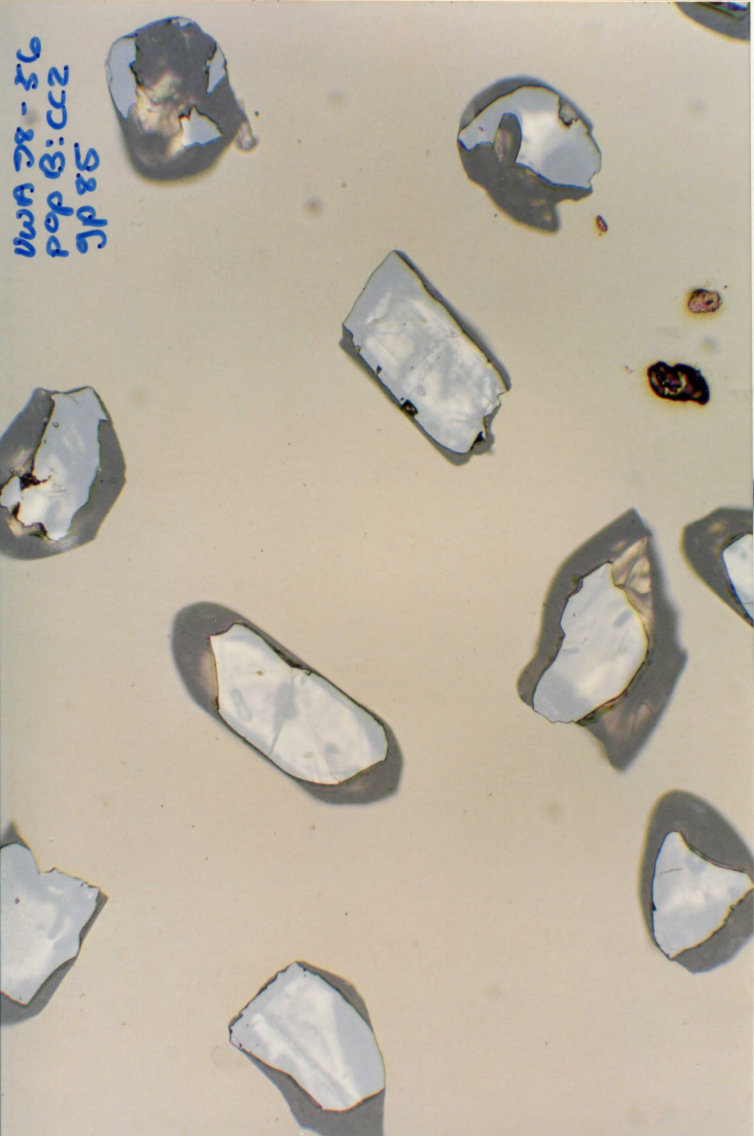


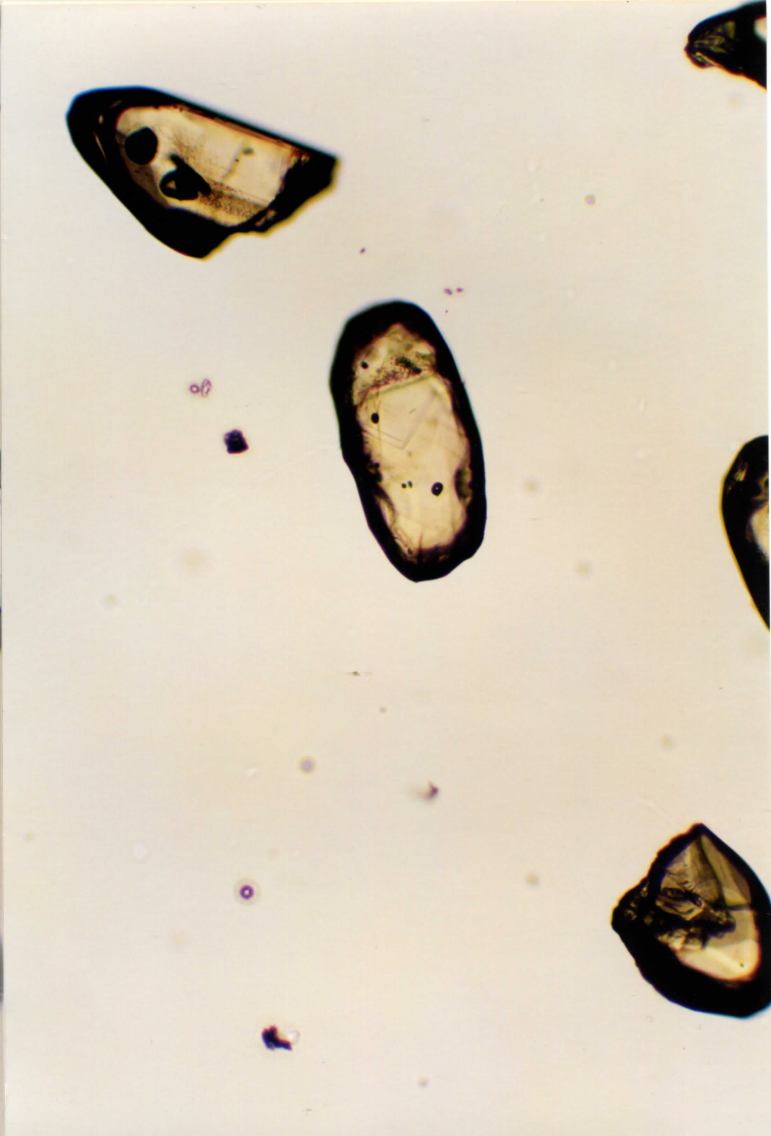
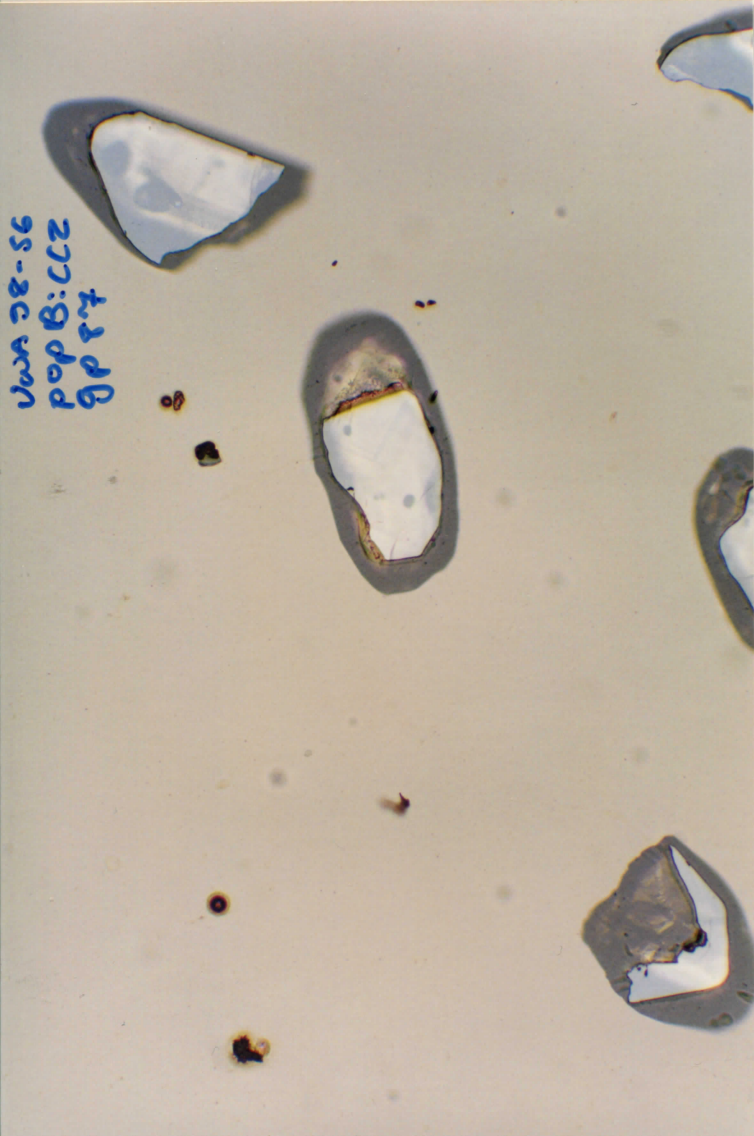
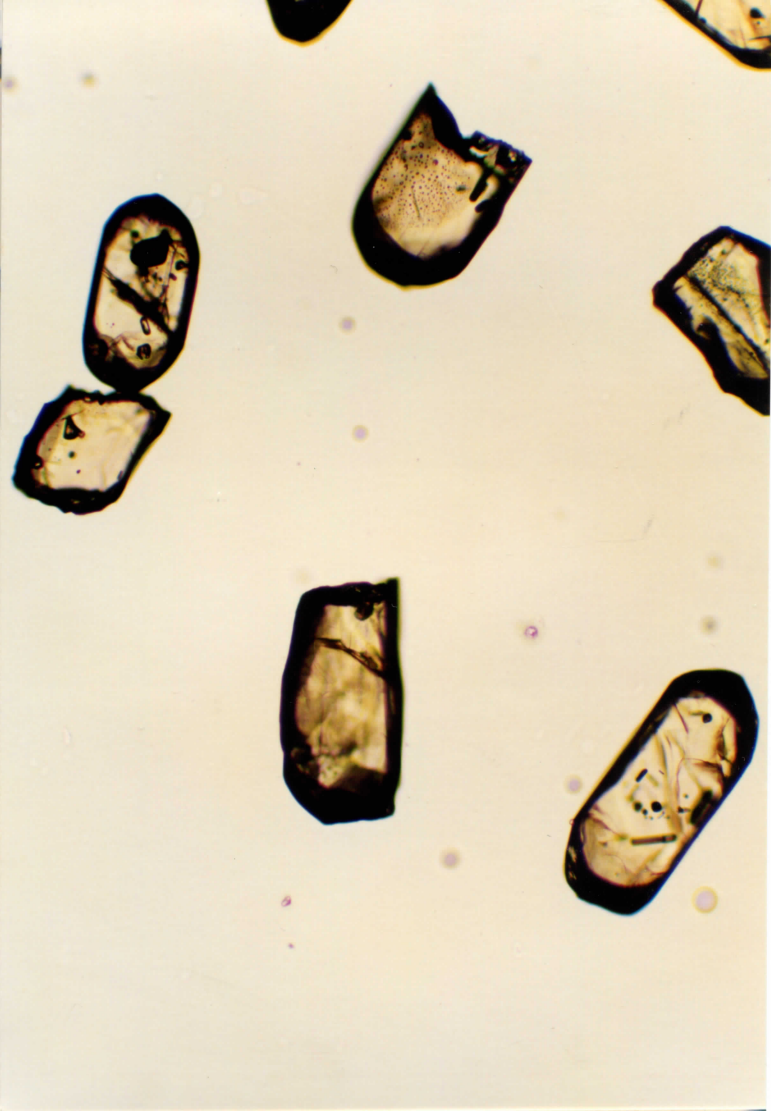


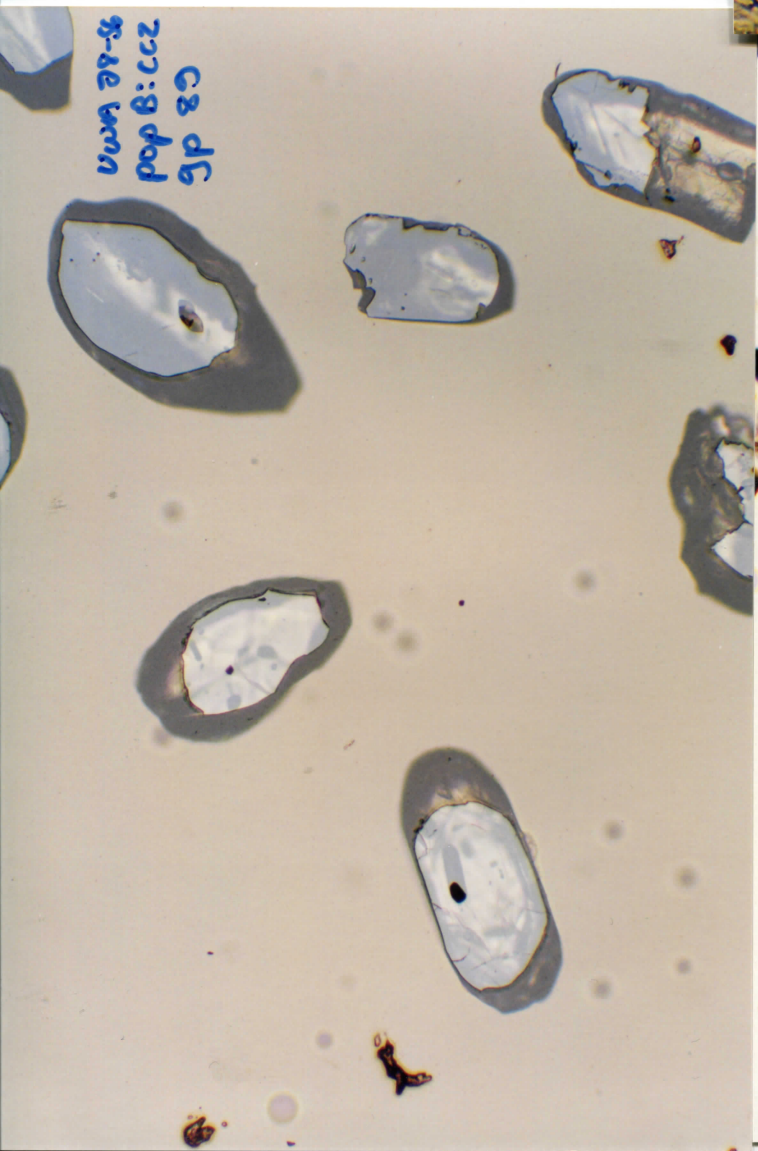
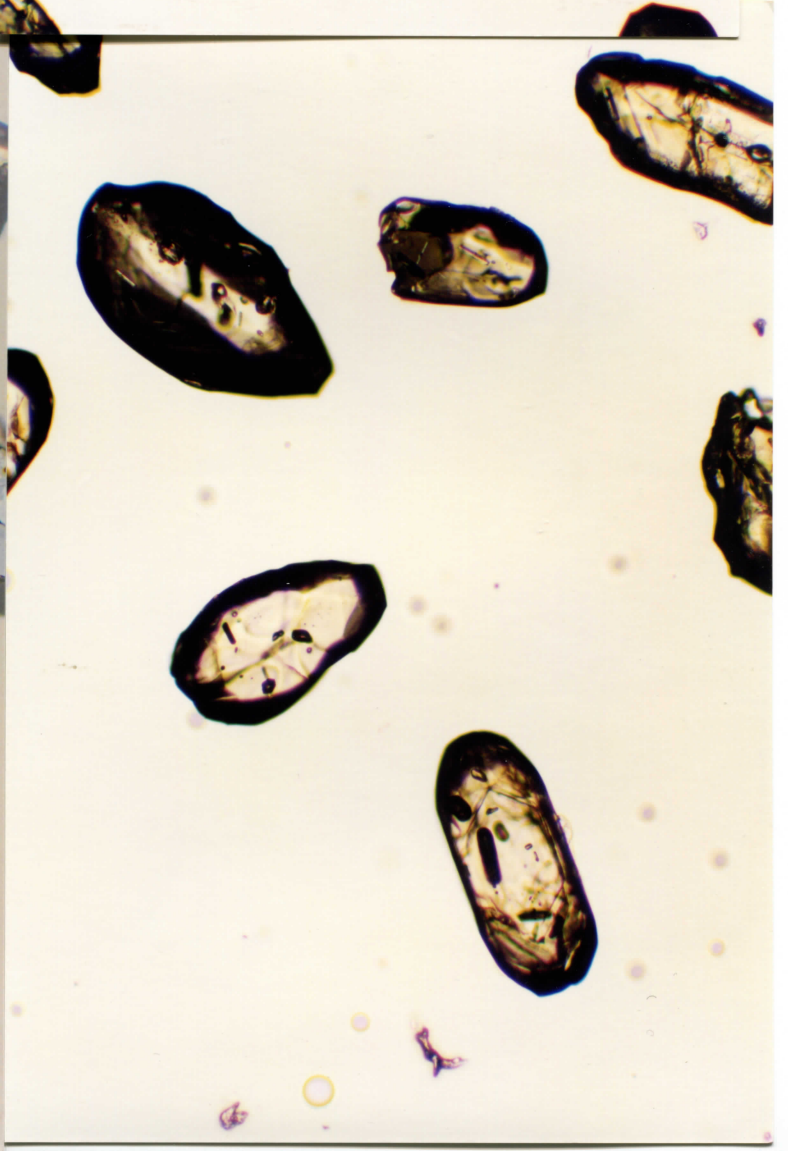
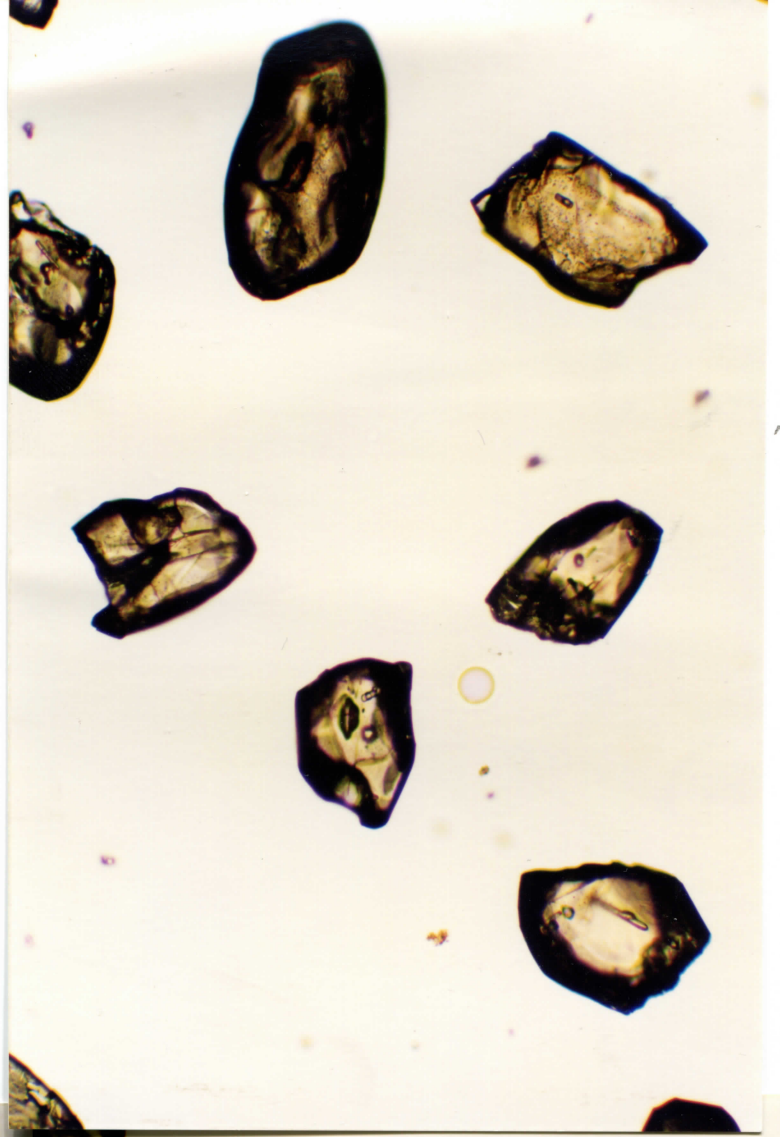
UWA 28-56  
POP B: CC2  
JP 86



UWA 28-56  
POP B: CC2  
JP 86

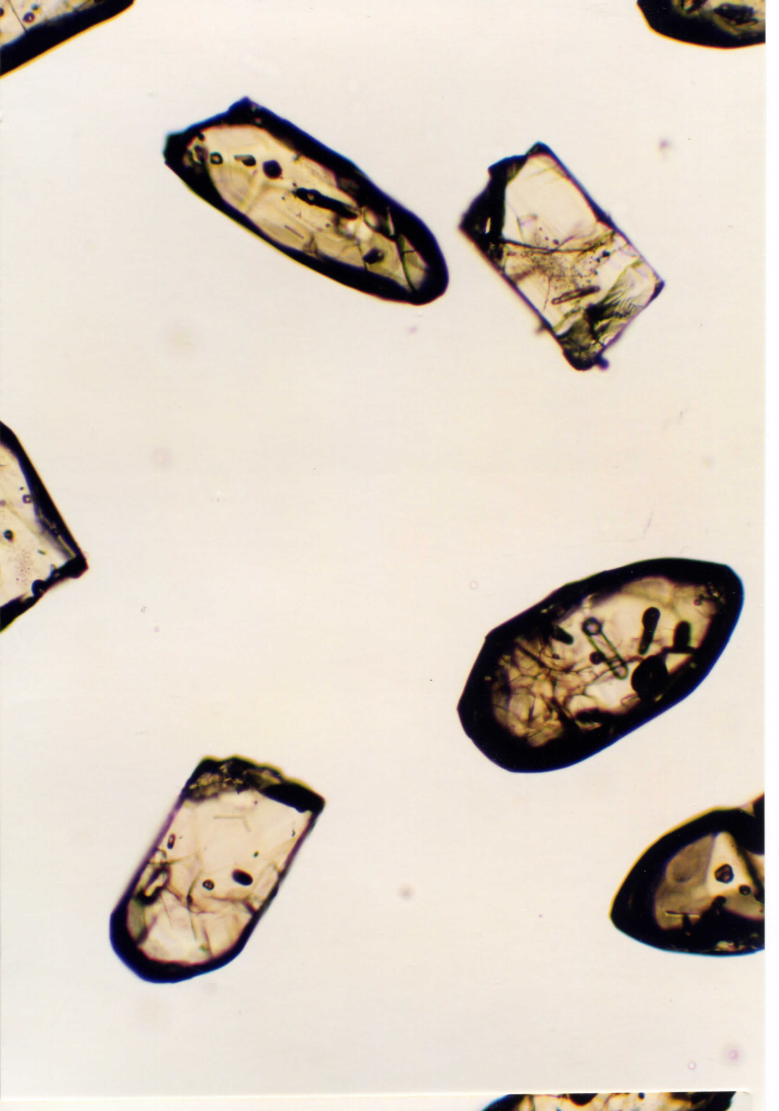
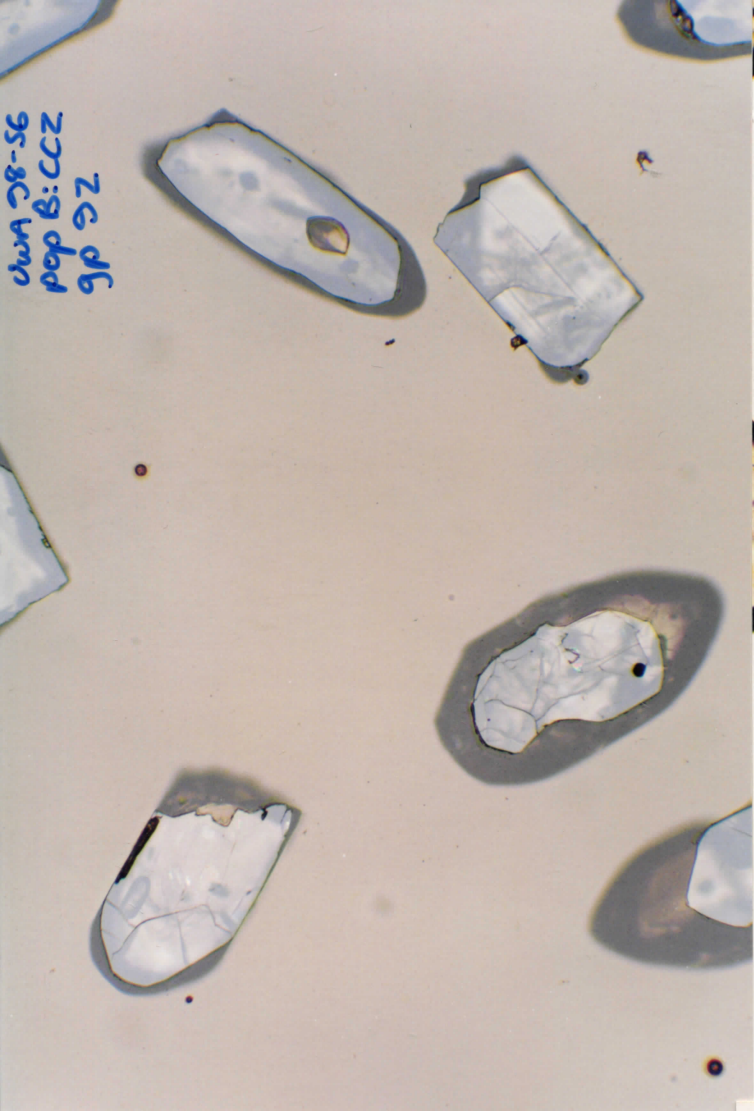




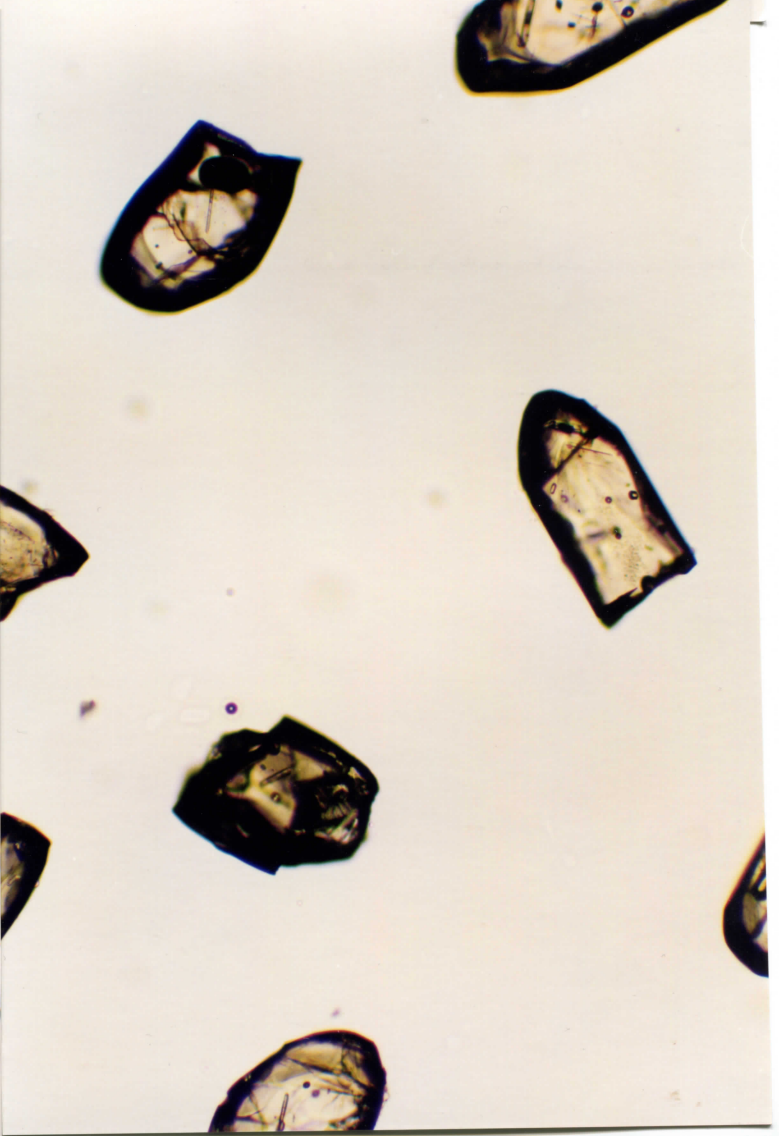
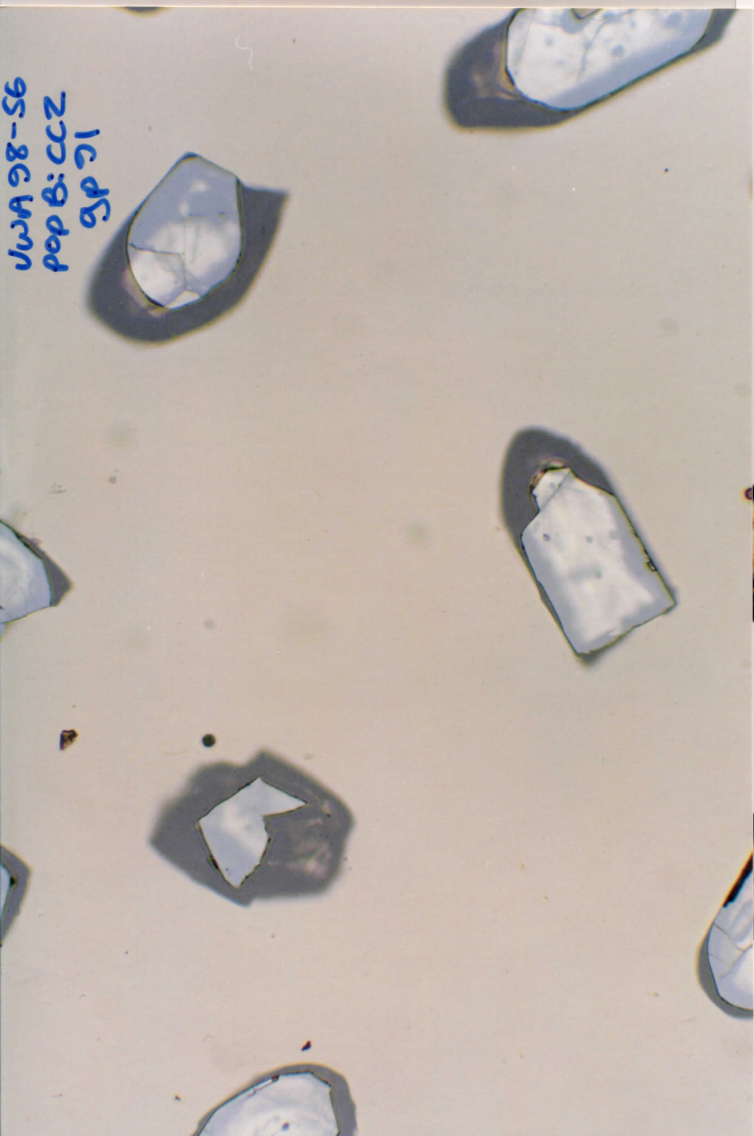




UWA 98-56  
pop B: CCZ  
gp 5Z

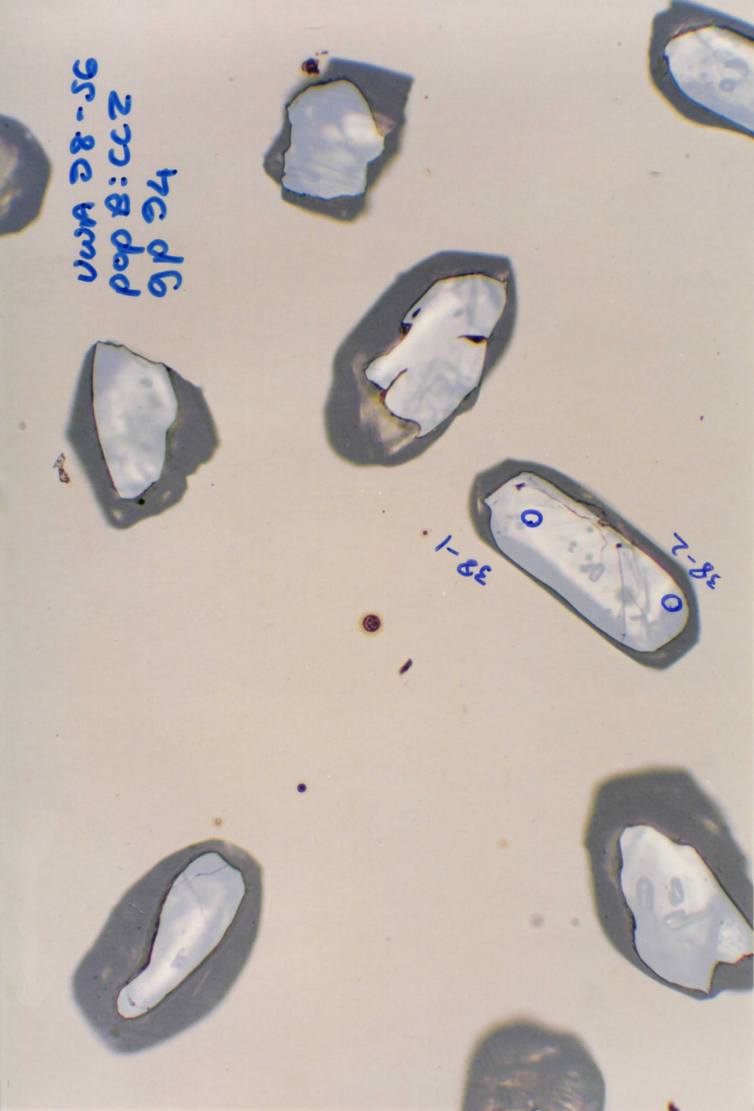


UWA 98-56  
pop B: CCZ  
gp 5C

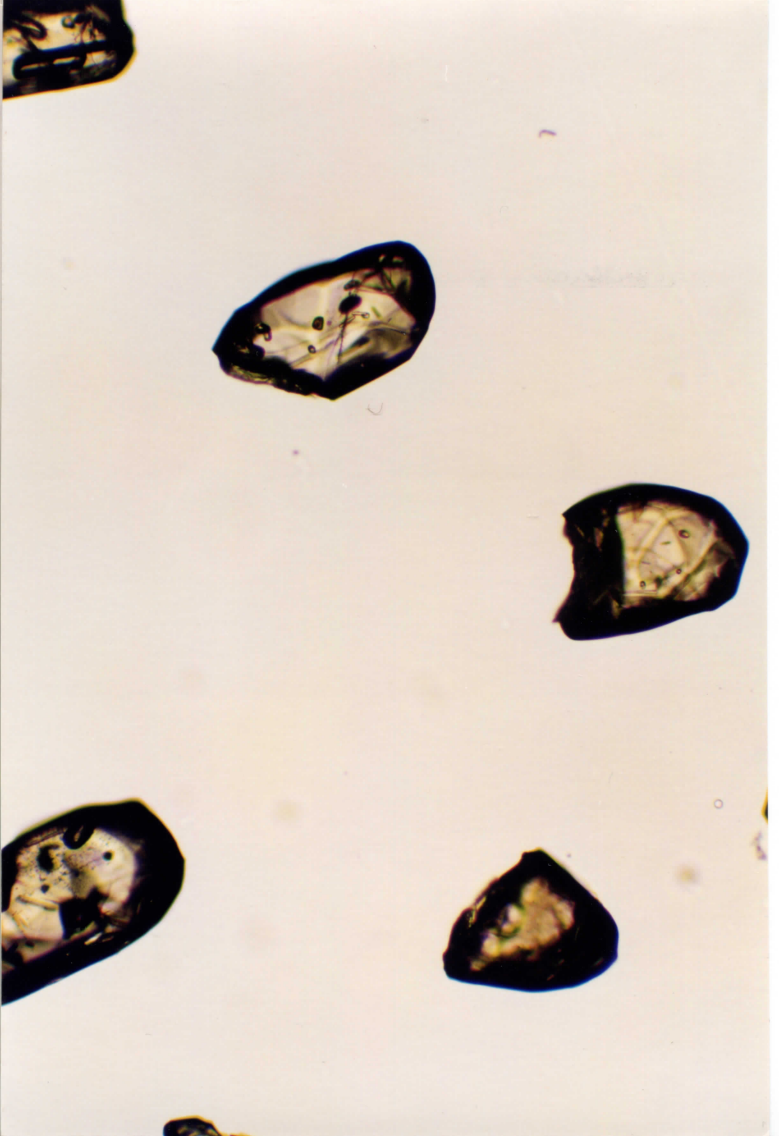
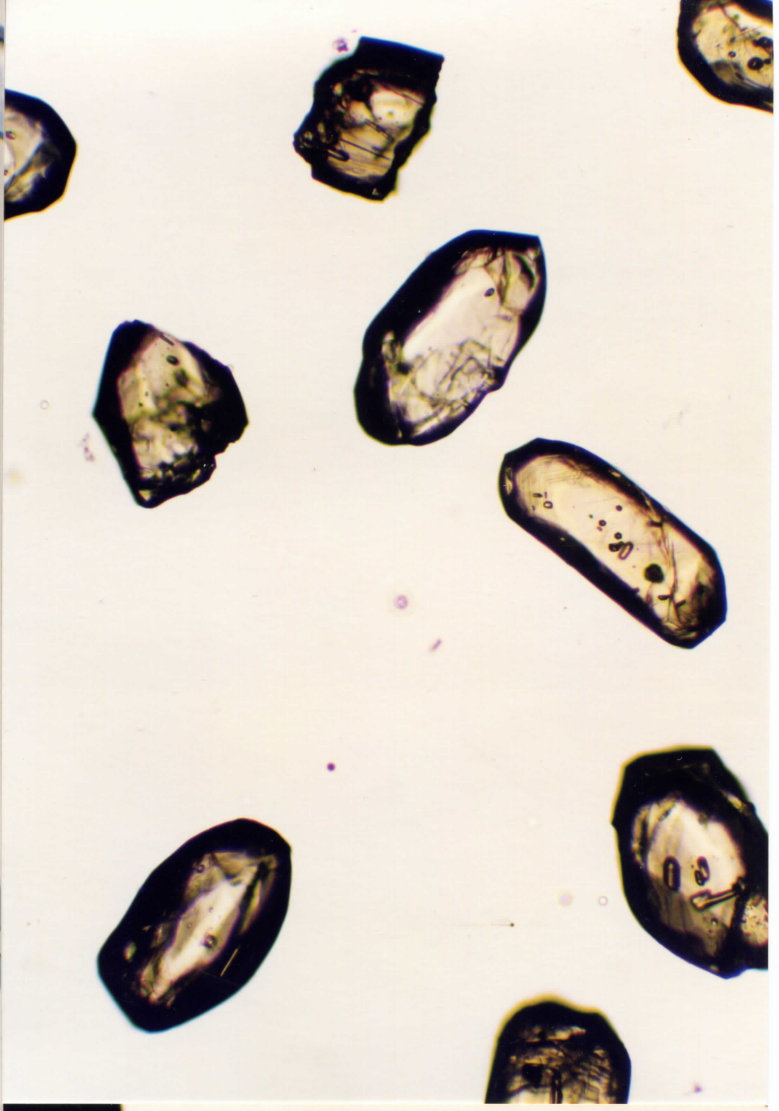
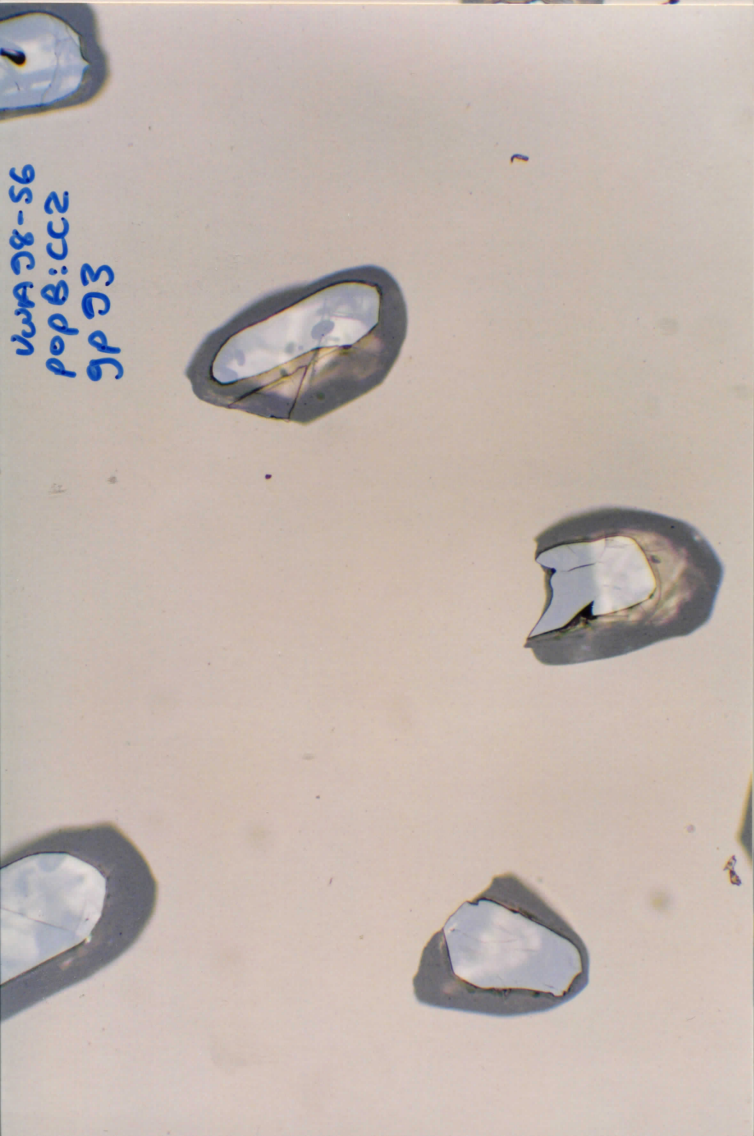


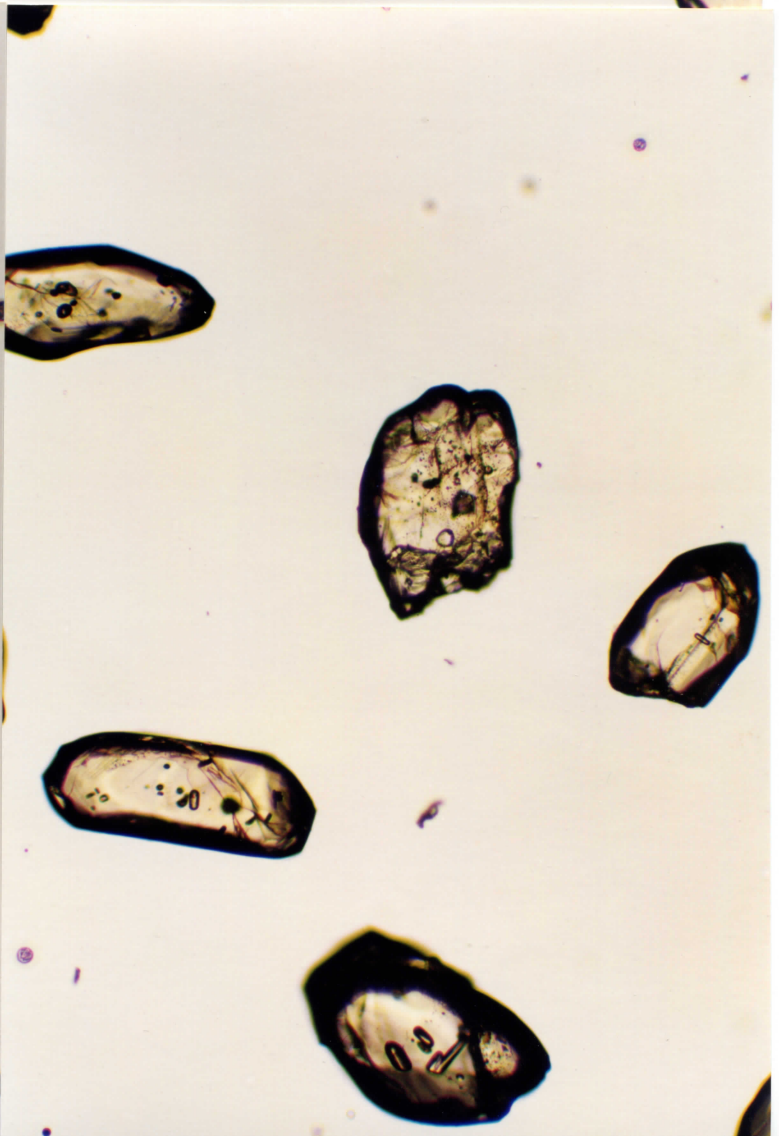
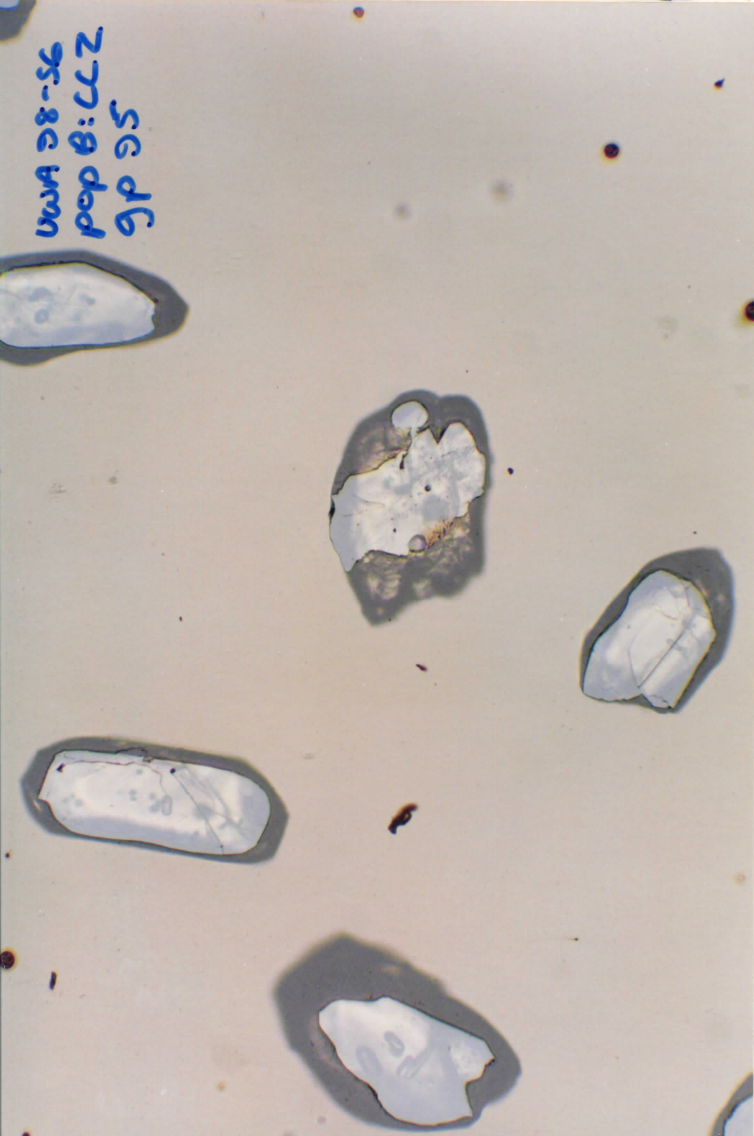
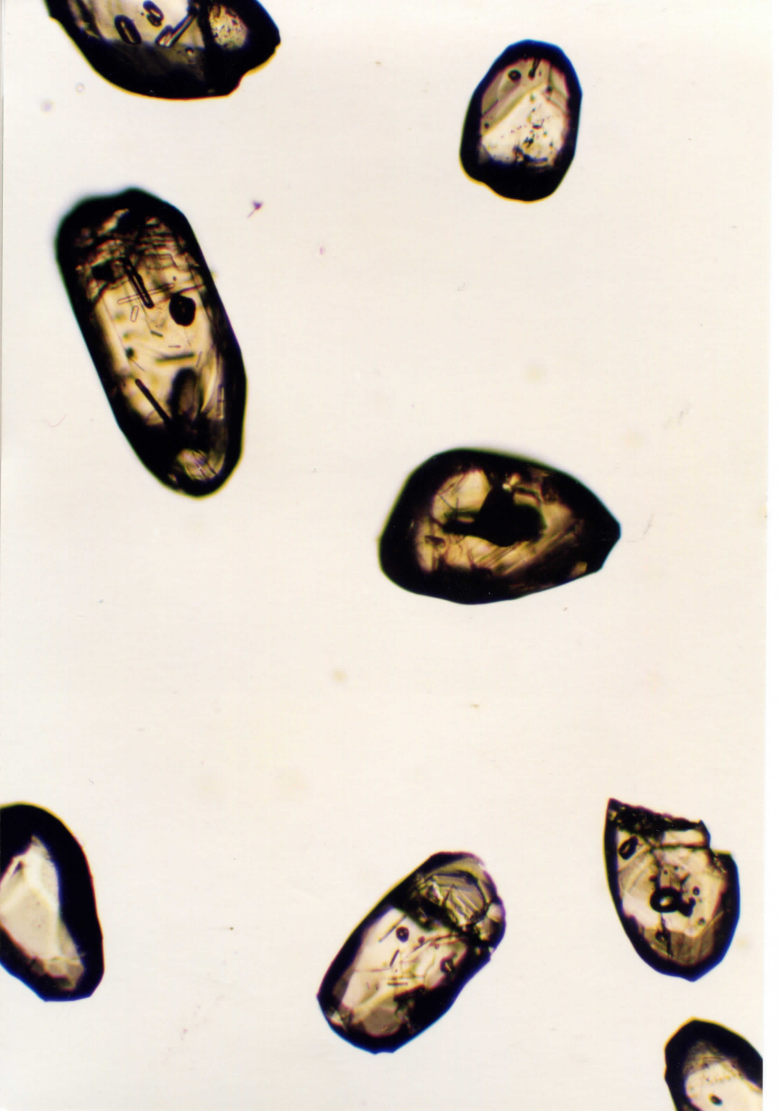
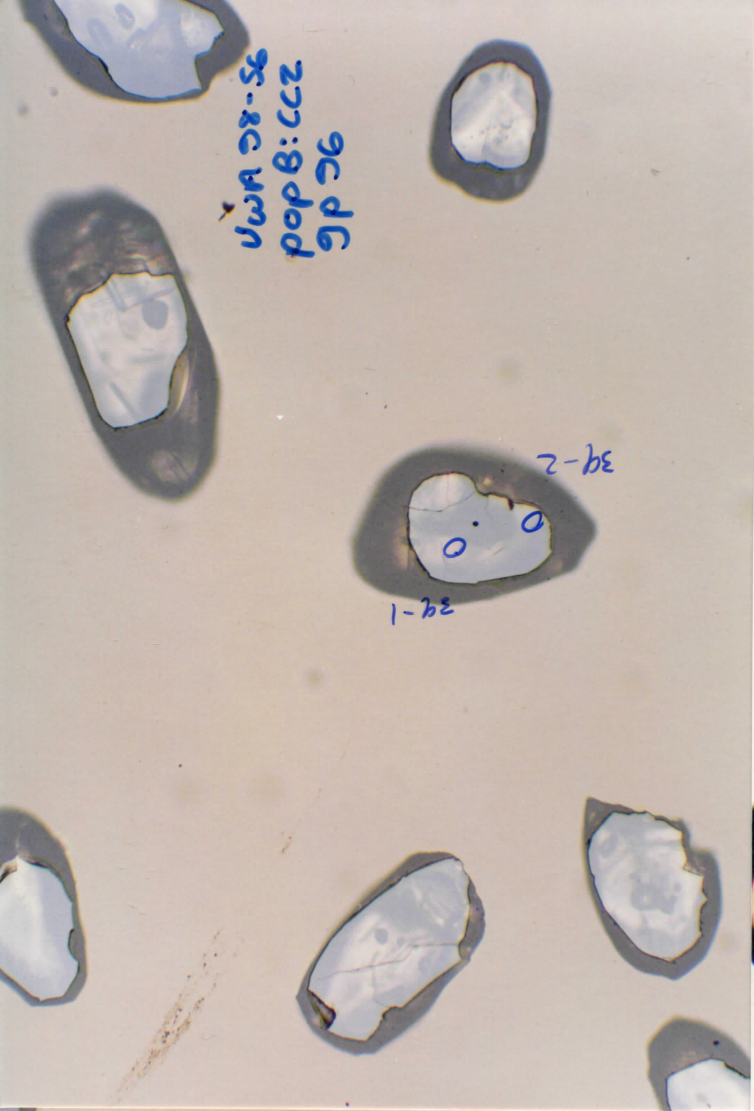
4c d6  
200:8 d6  
95-82 AMN

38-2  
39-1

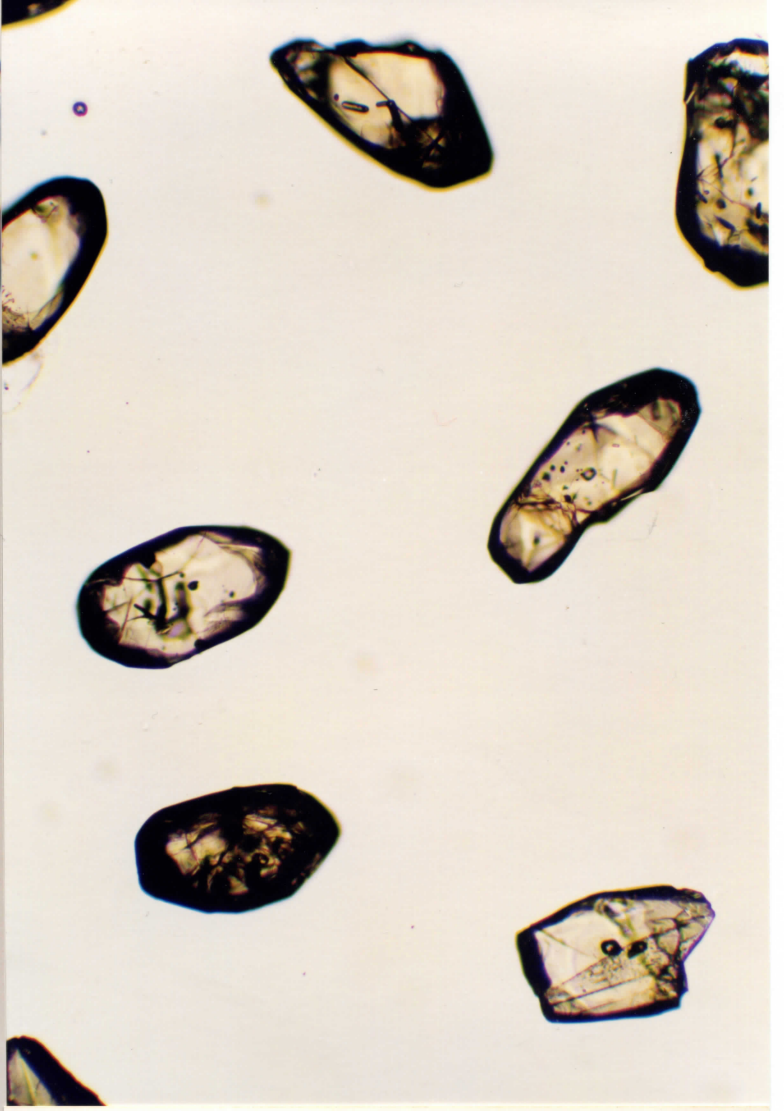
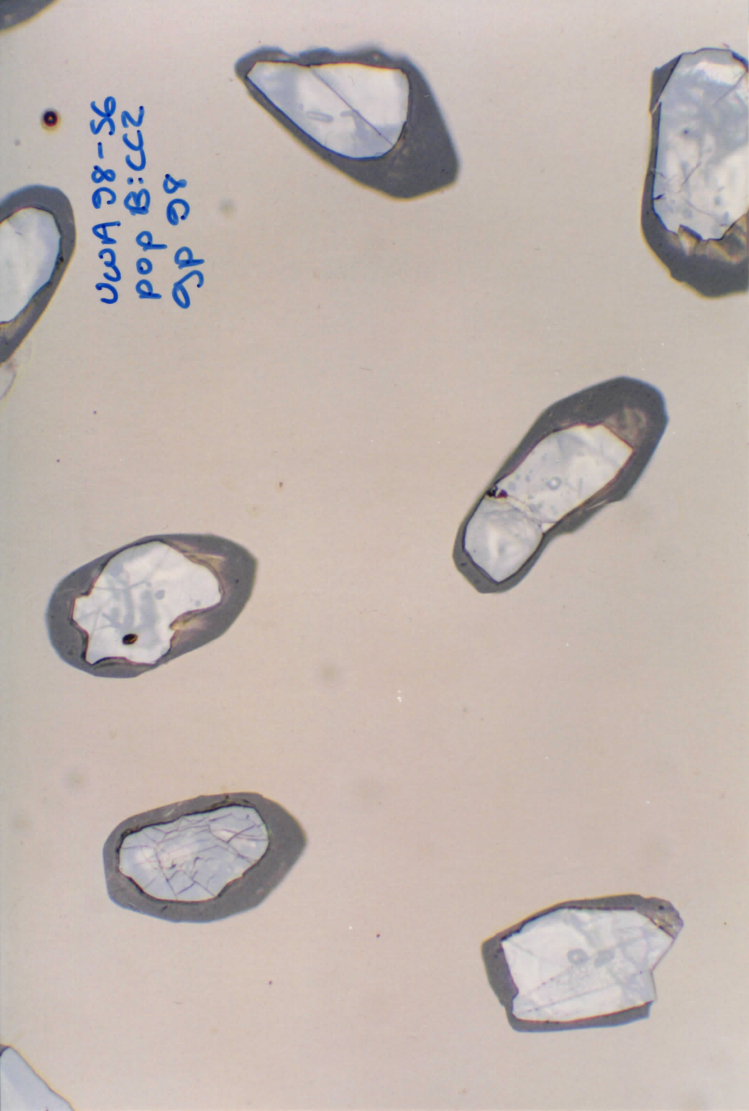


VWA 28-56  
pop B:CC2  
9P 23

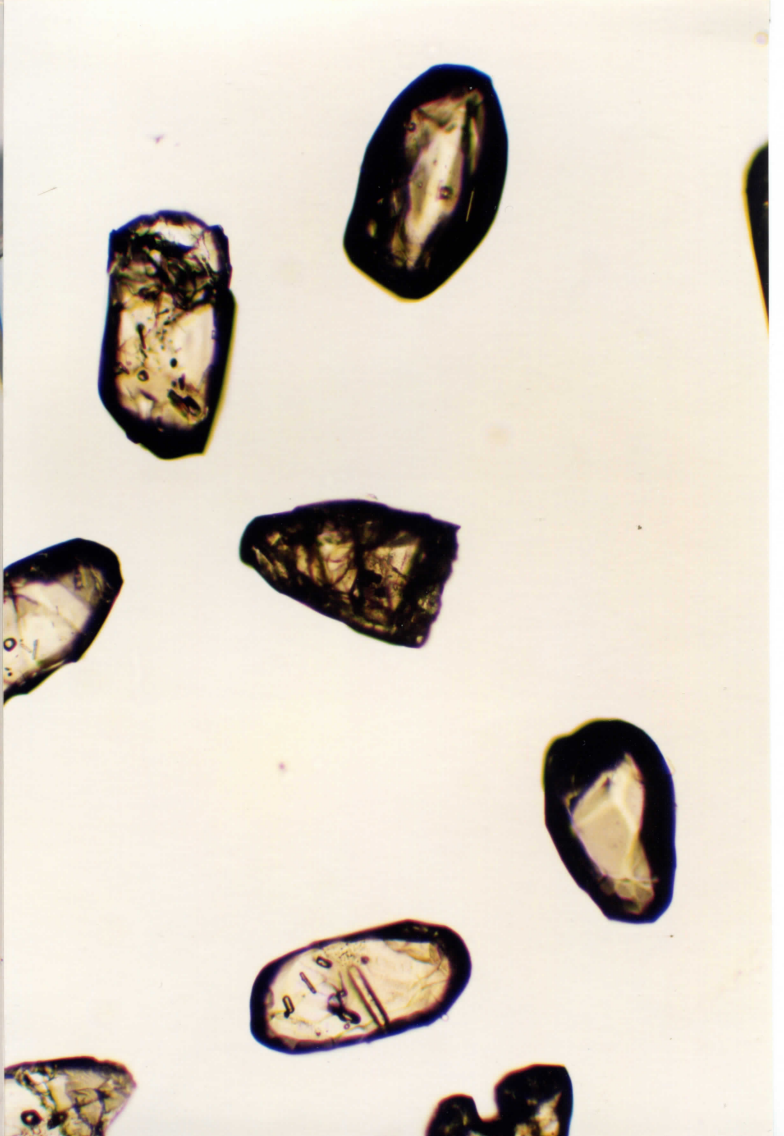
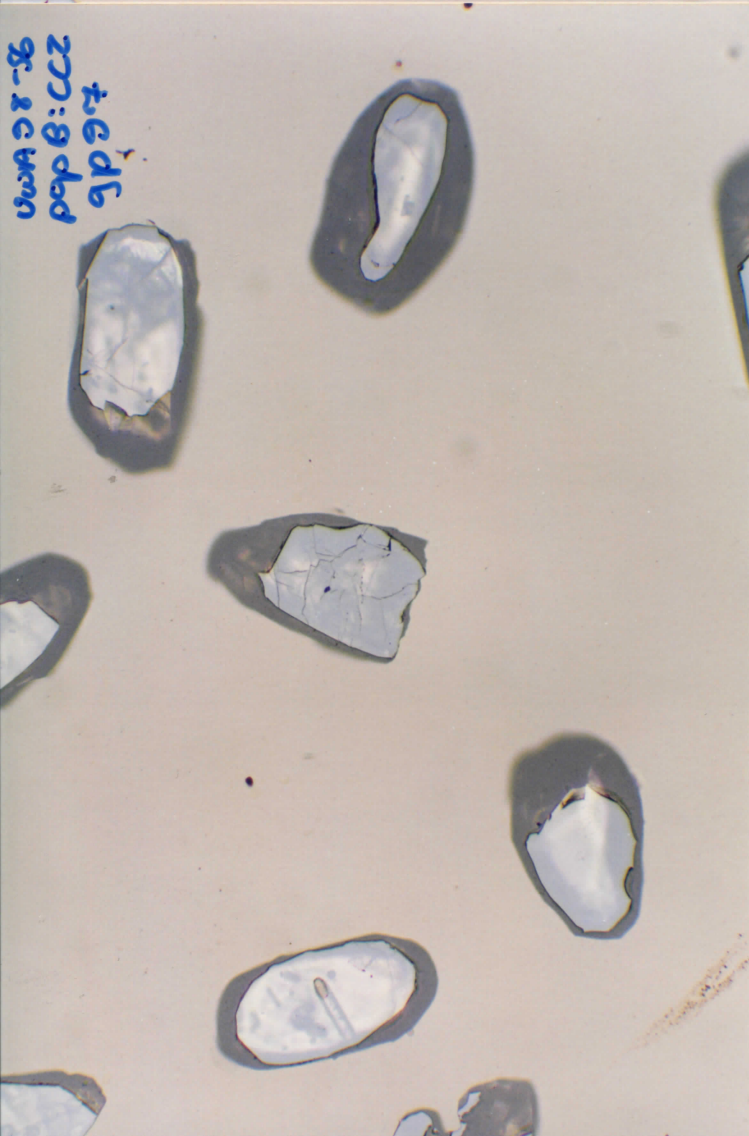




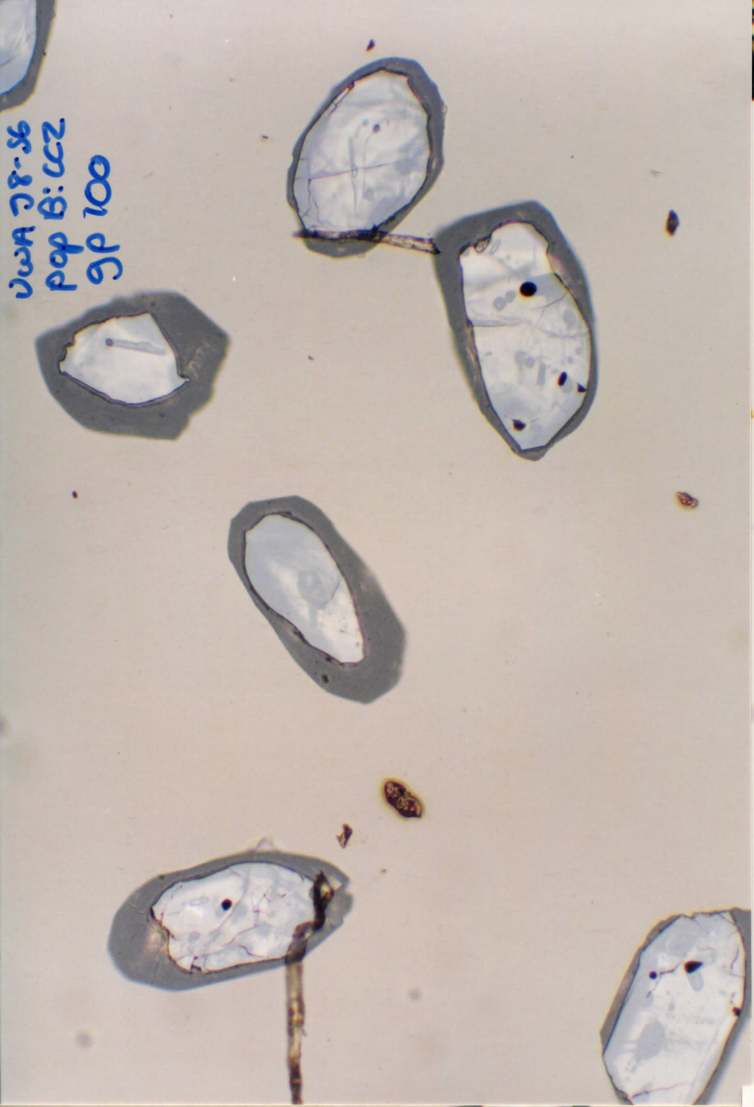
UWA 28-56  
pop B:CCZ  
gp 28



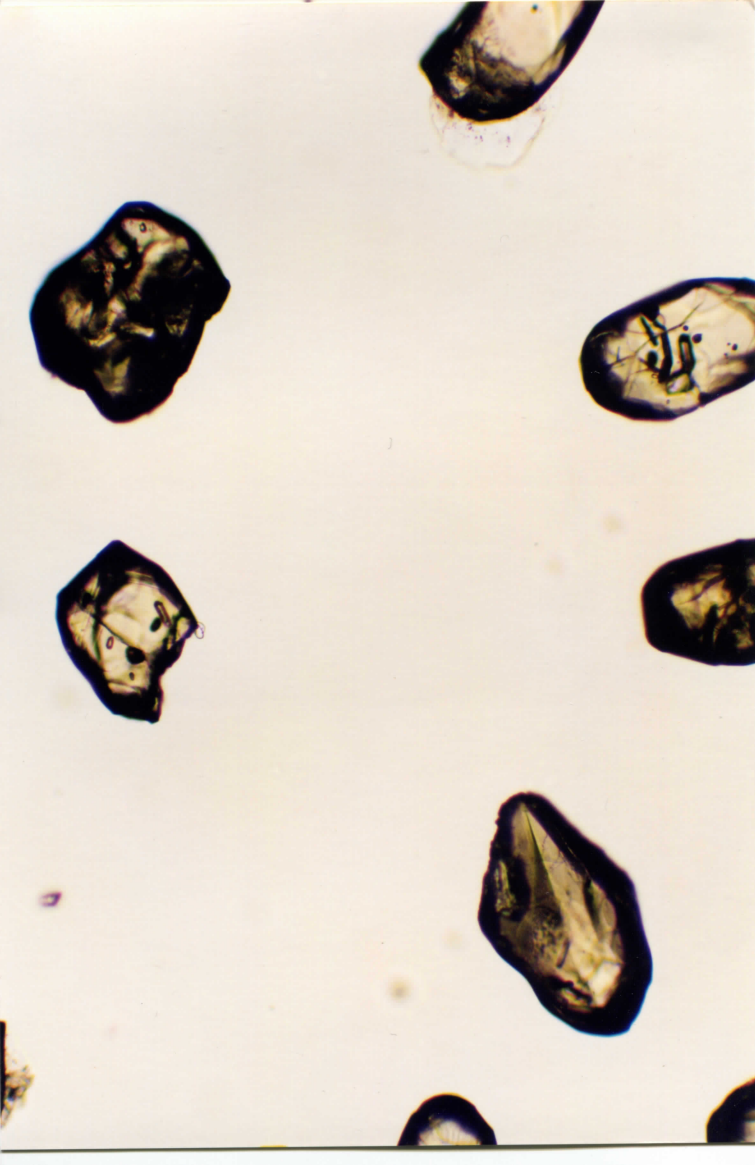
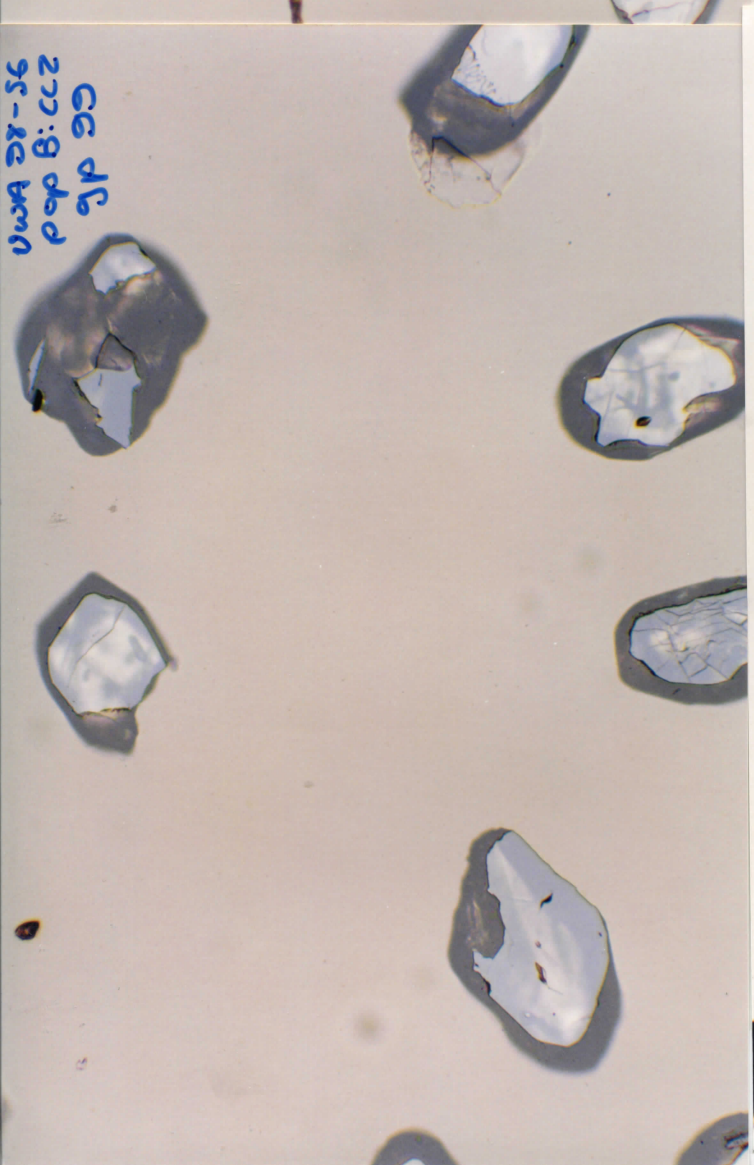
UWA 28-56  
pop B:CCZ  
gp 28

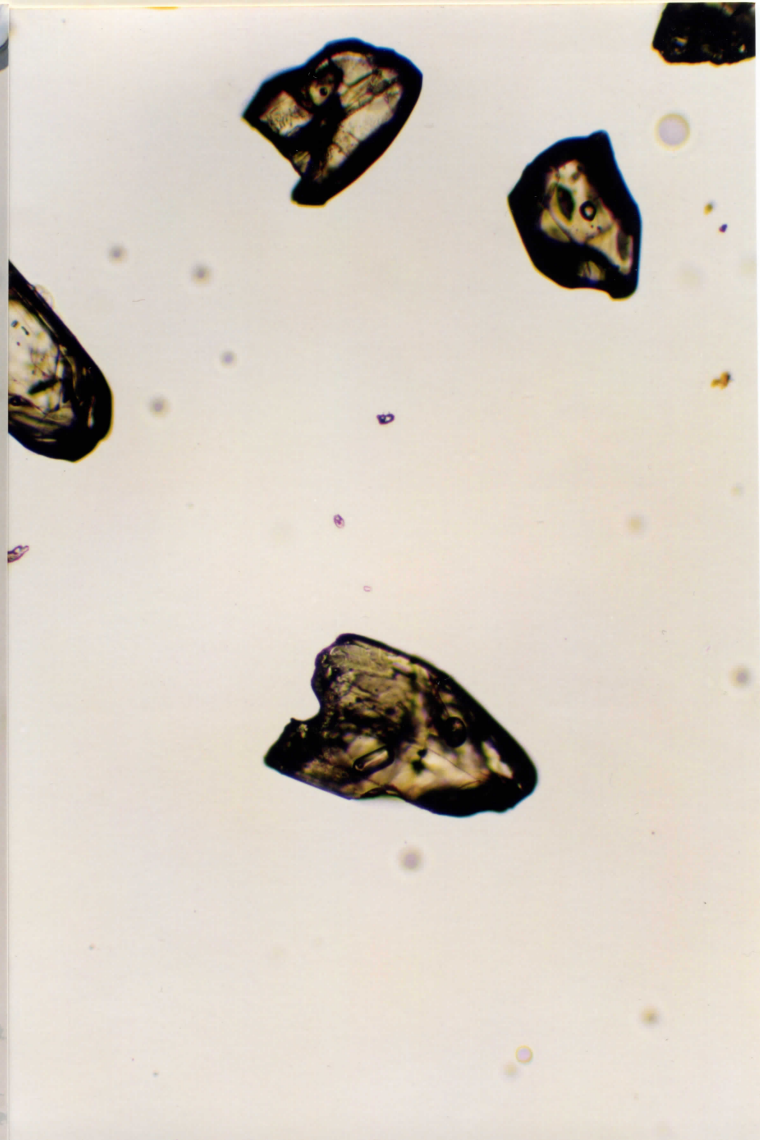
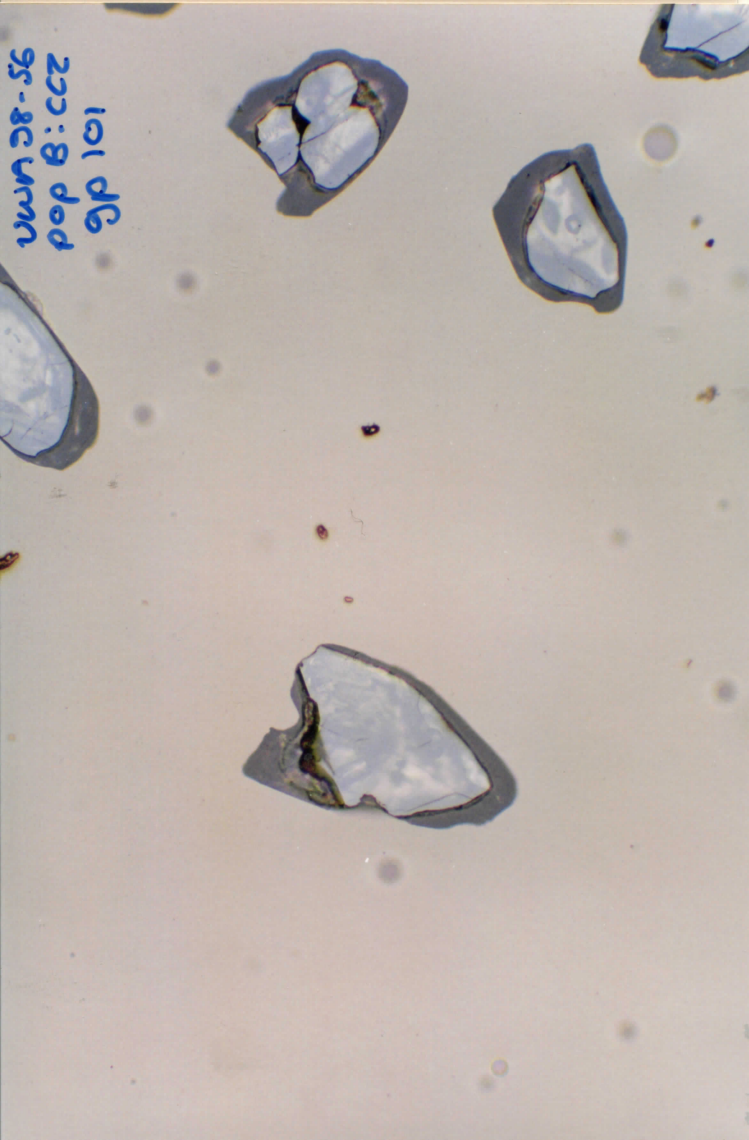
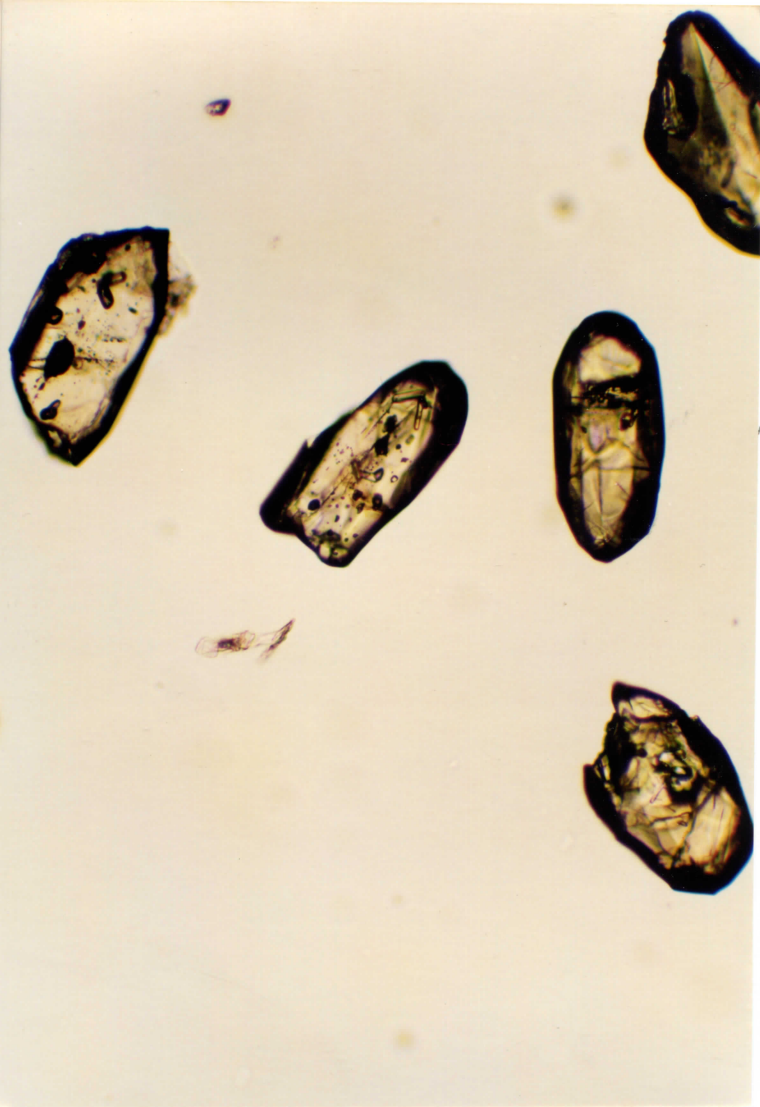


WA 28-36  
277:8 CCZ  
pop B: dcd  
gp 100

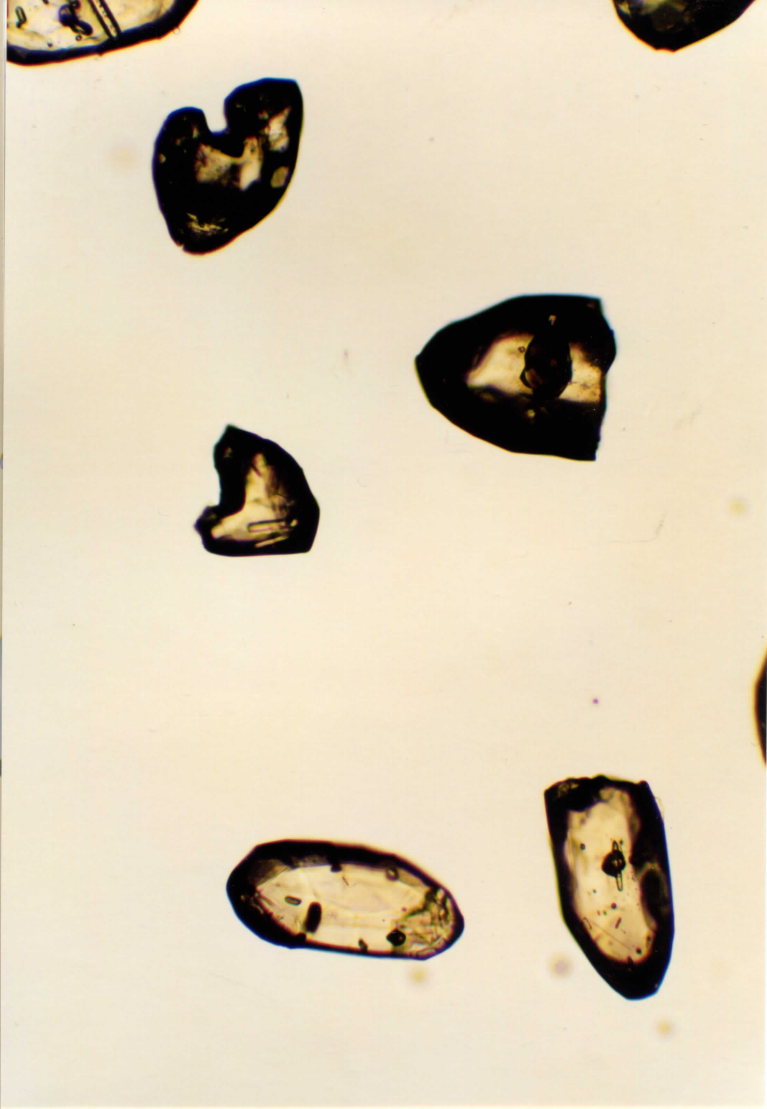
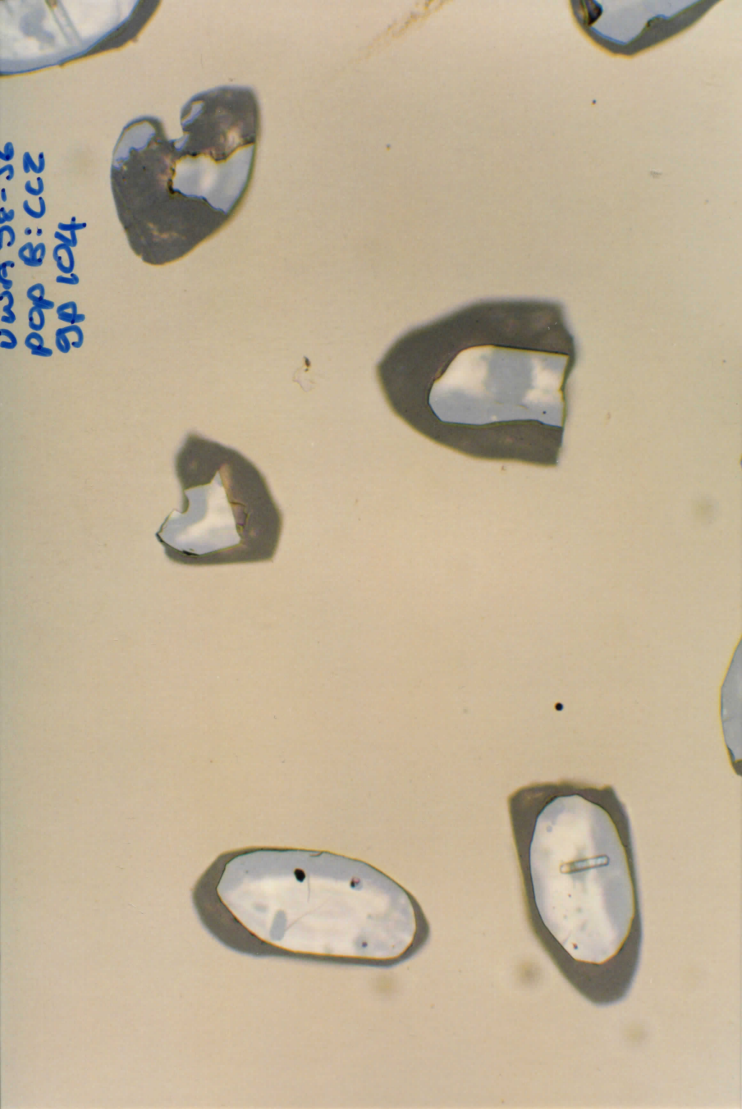


WA 28-36  
277:8 CCZ  
pop B: dcd  
gp 99

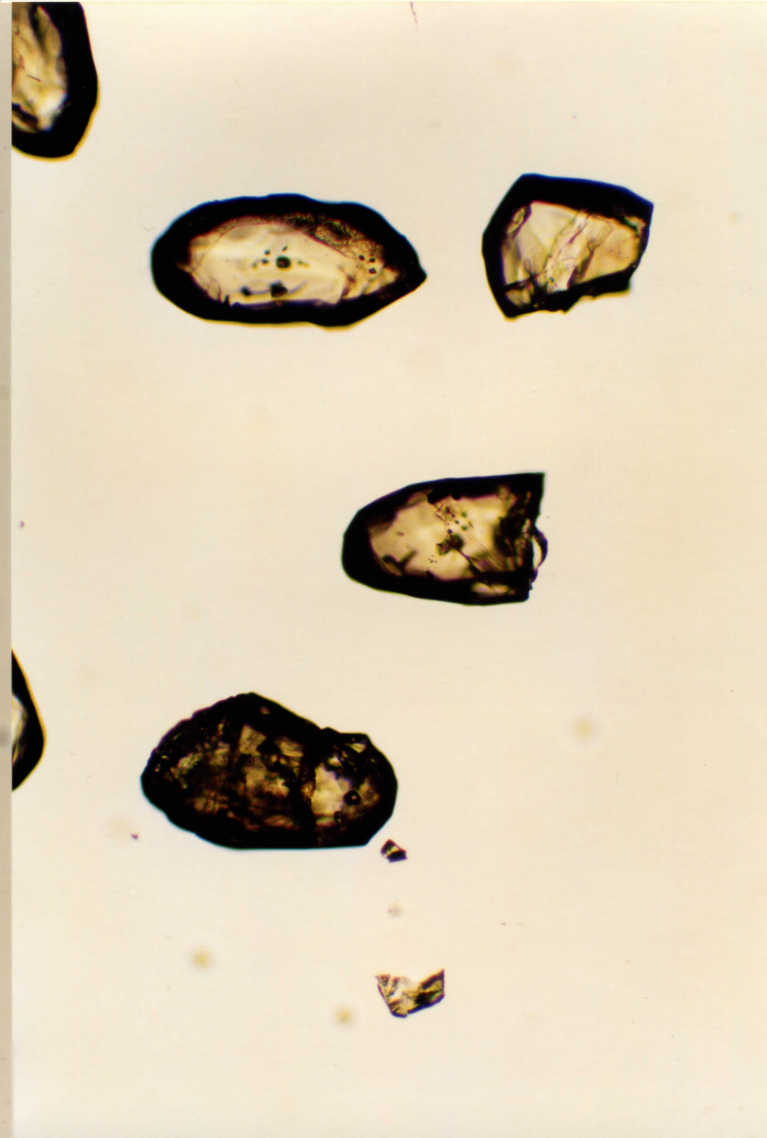
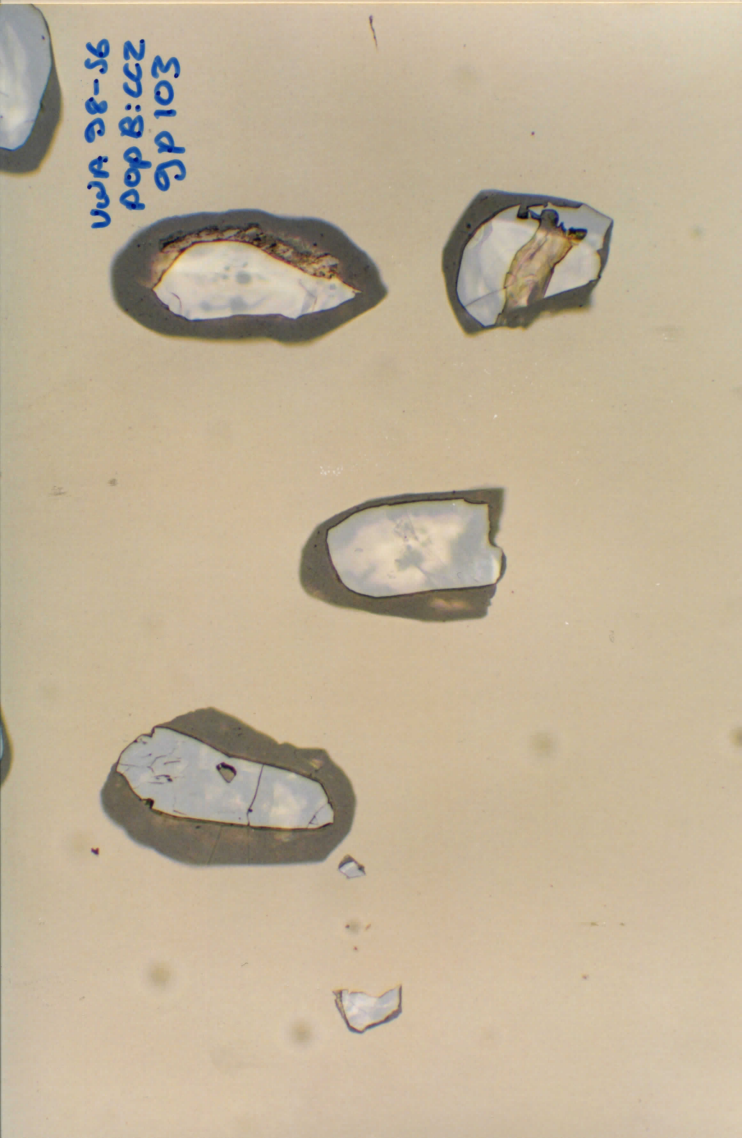




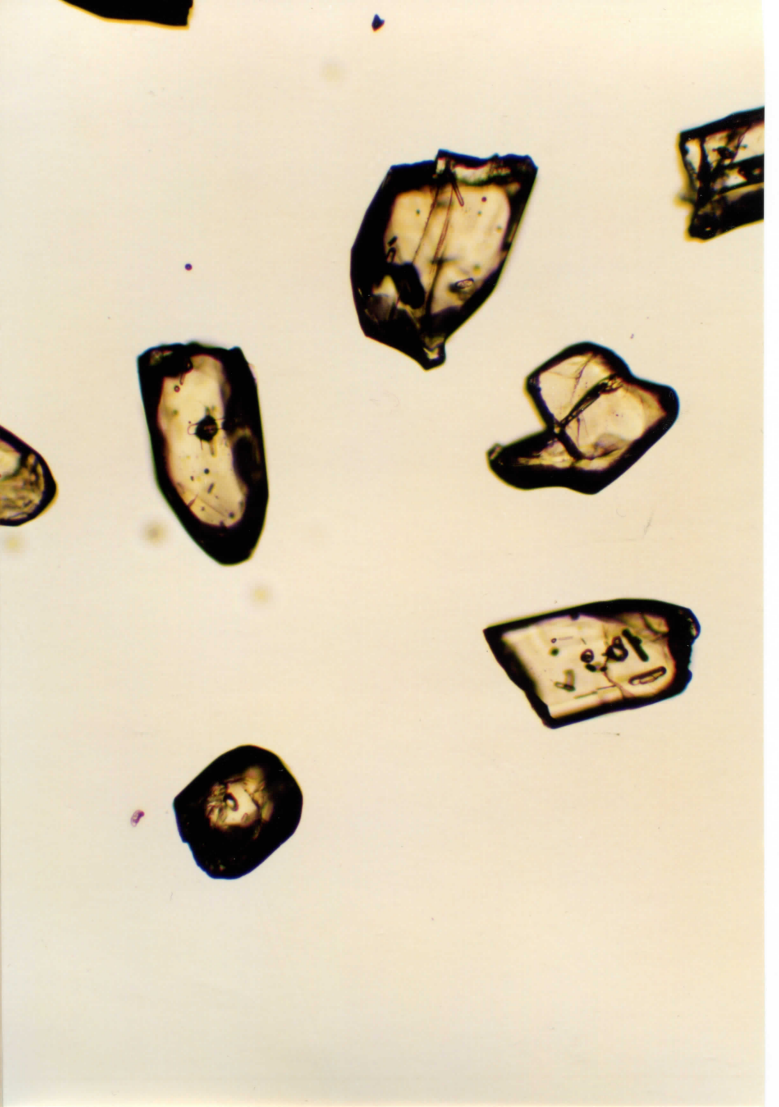
UWA 28-36  
pop 8:ccz  
Sp 104



UWA 28-36  
pop 8:ccz  
Sp 103



UWA 28-56  
pop B: CCZ  
gp 106



UWA 28-56  
pop B: CCZ  
gp 105

