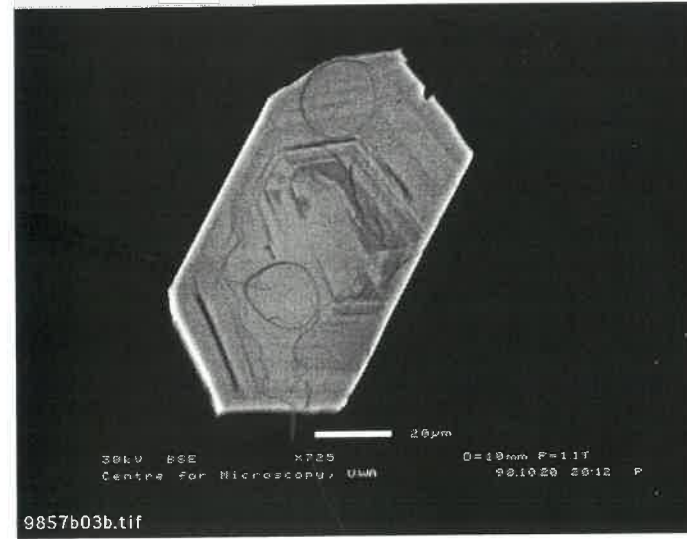
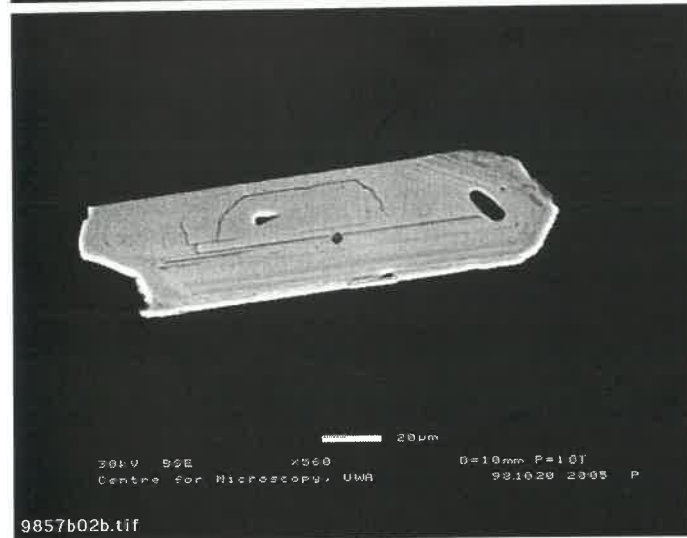
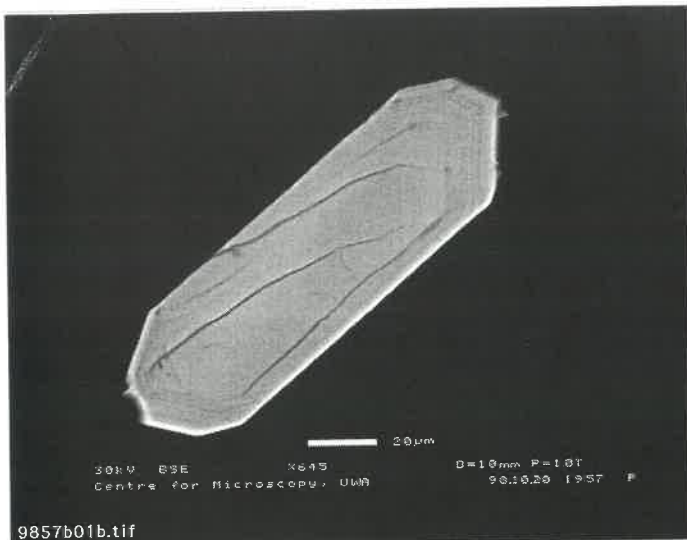
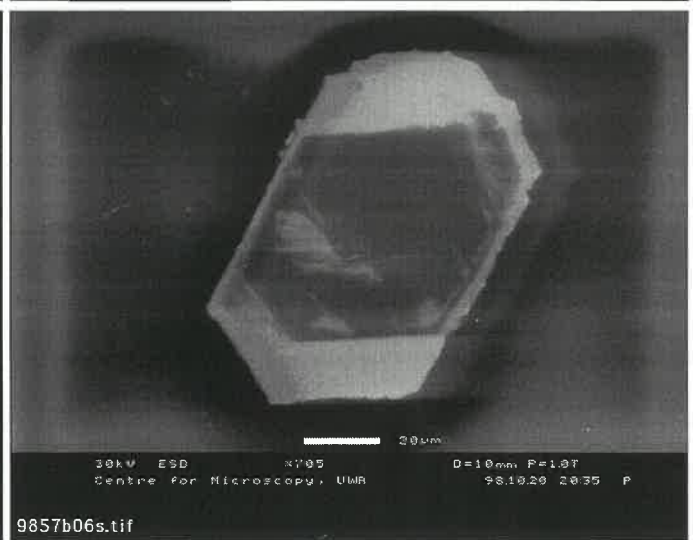
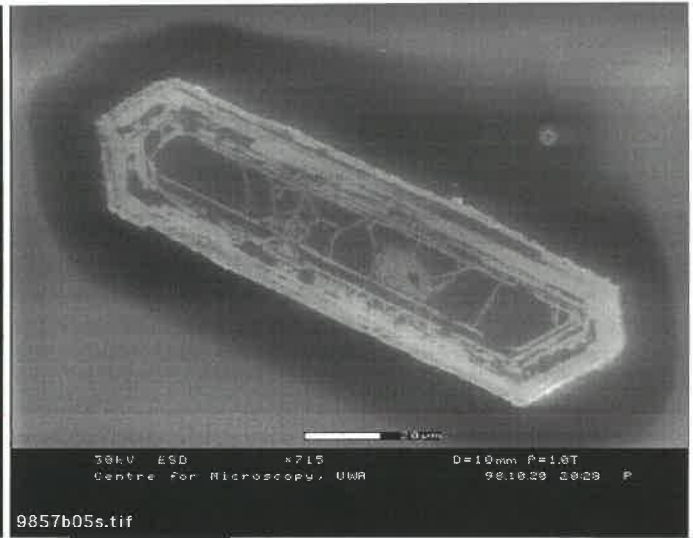
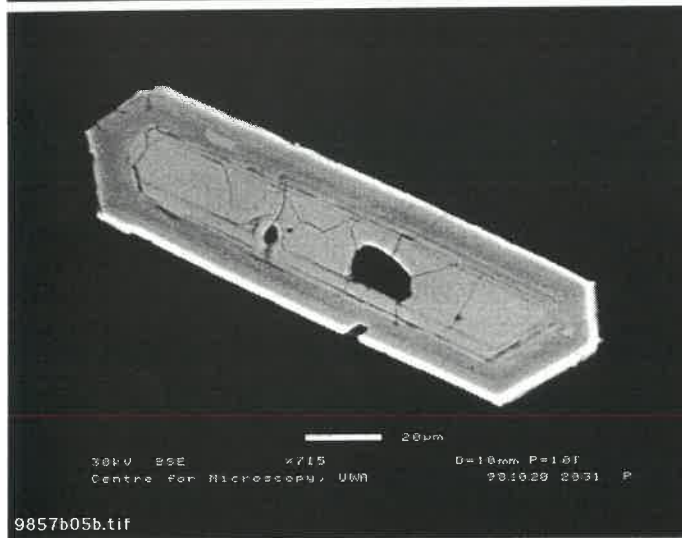
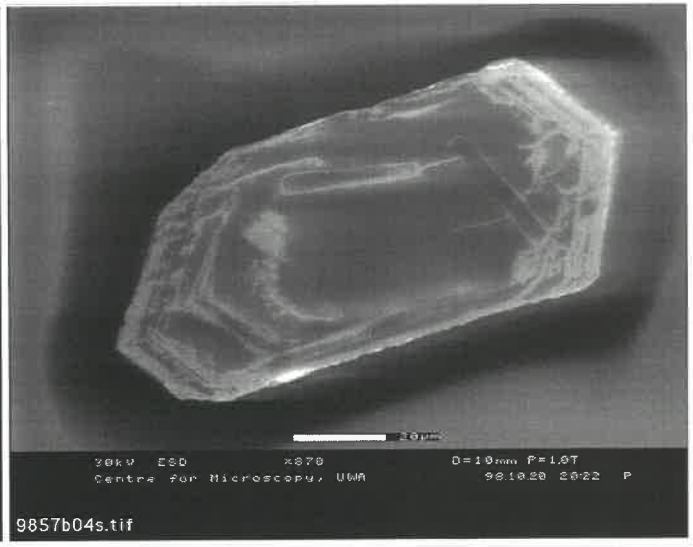
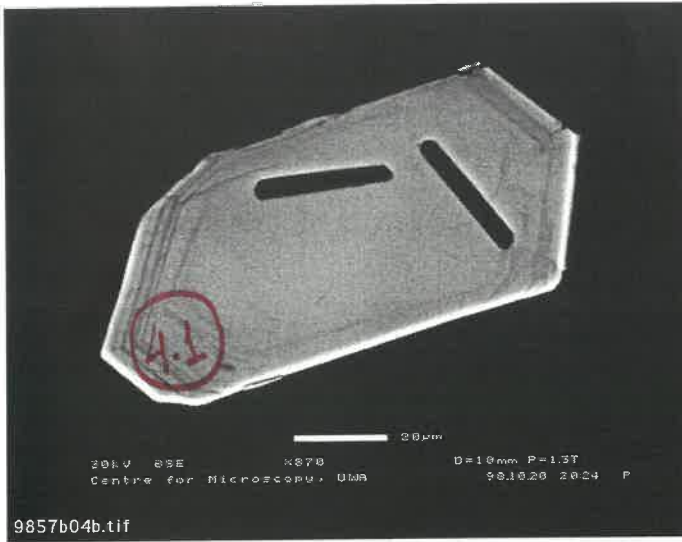


UWA 98.57 - POP. B

Eficeias granite (1) 22.10.98

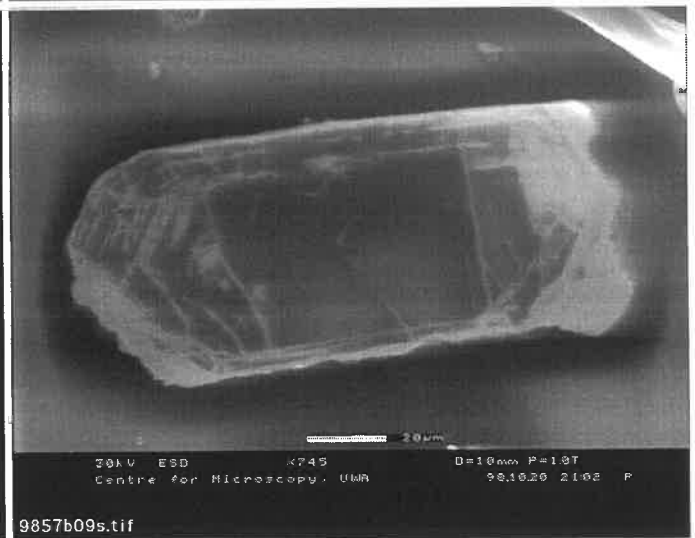
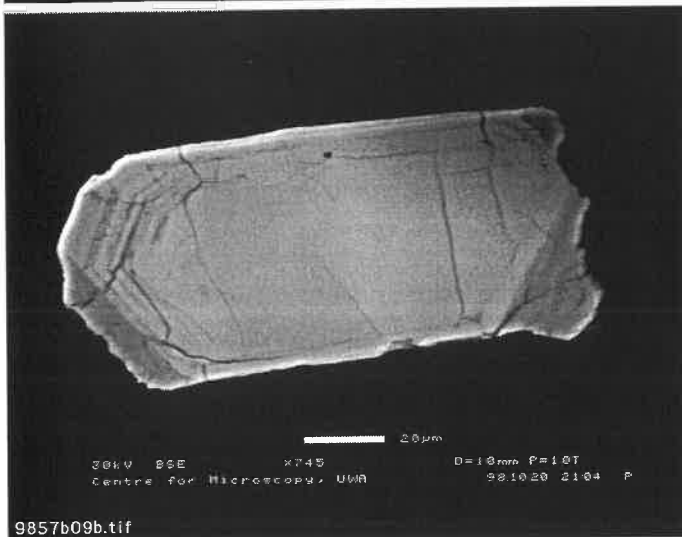
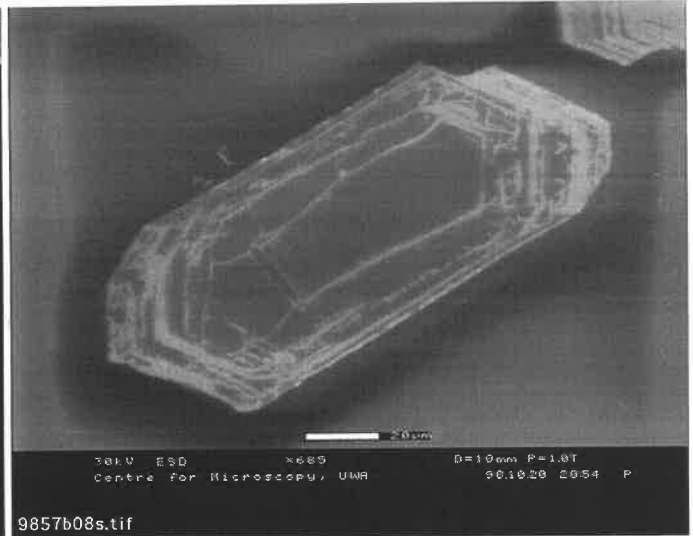
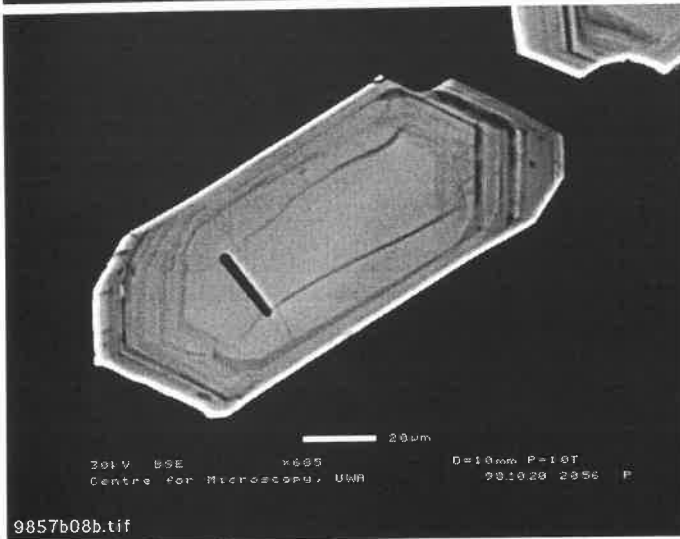
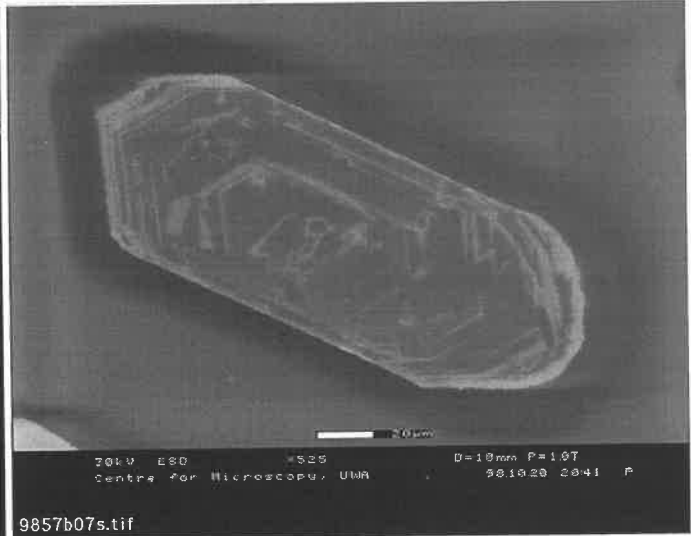
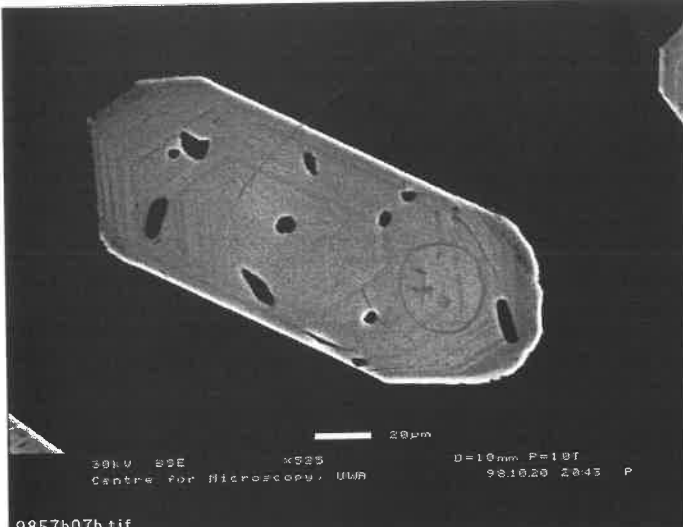


Eficeias granite ( 2) 22.10.98

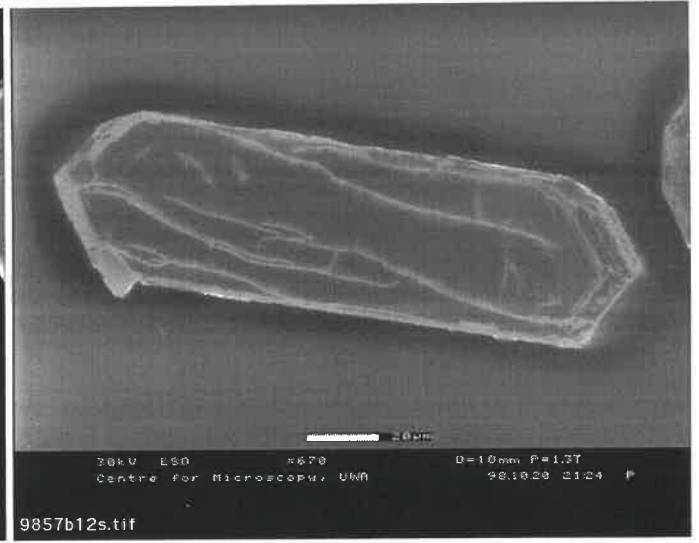
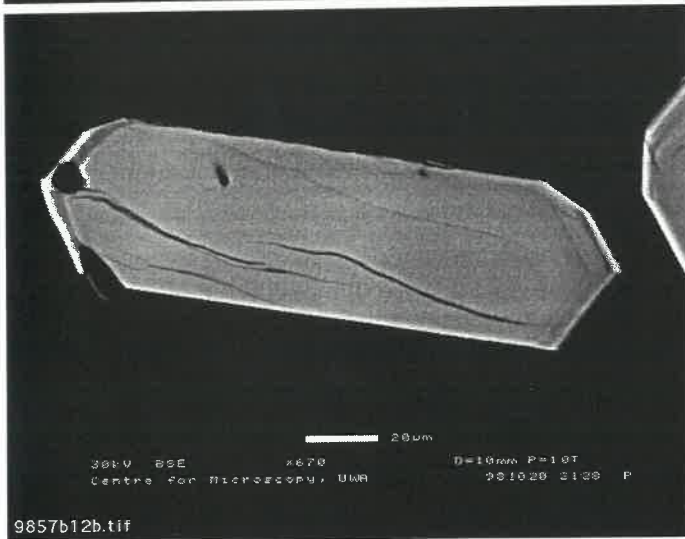
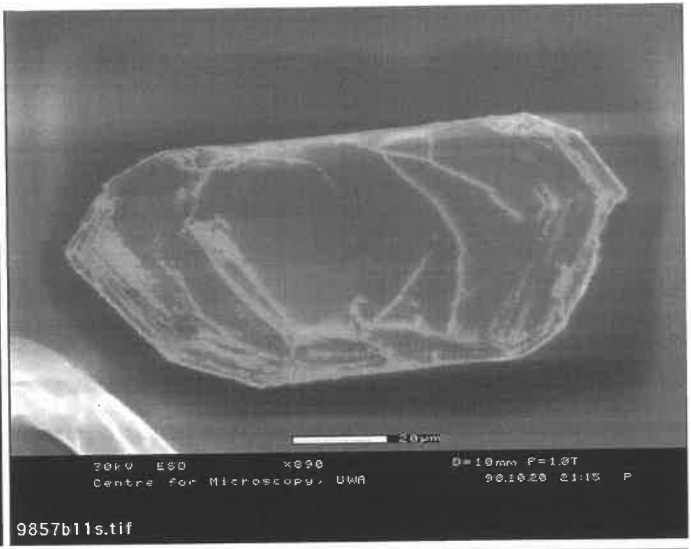


Eficeias granite (3) 22.10.98

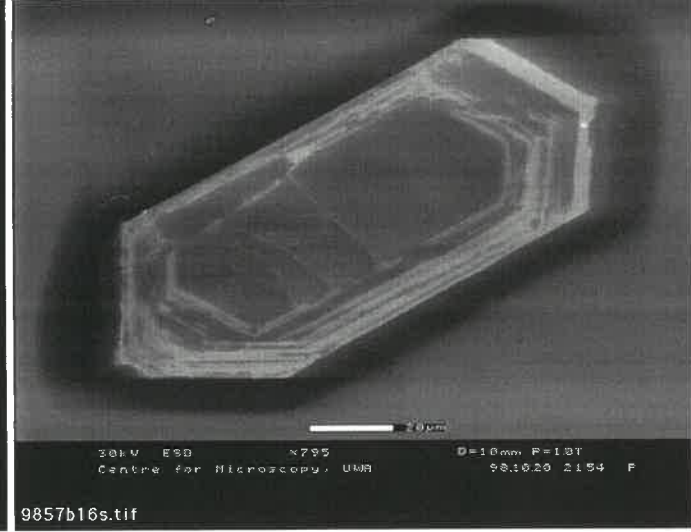
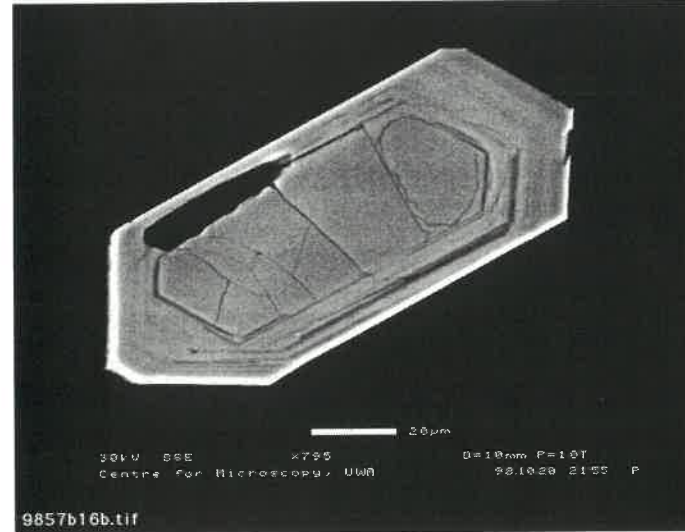
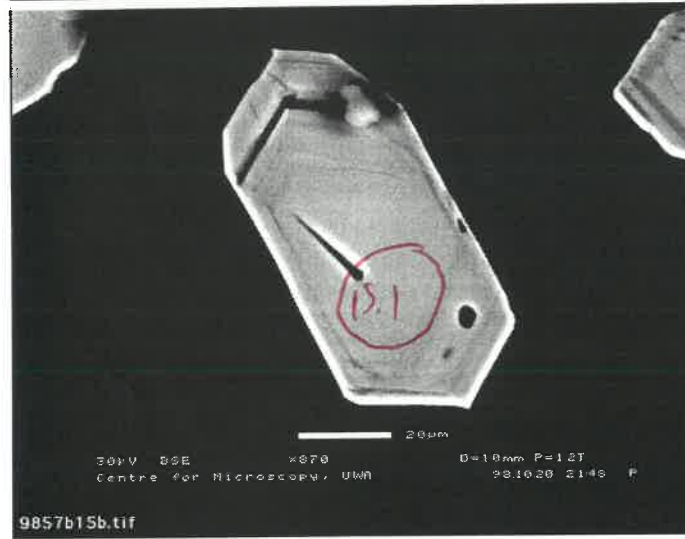
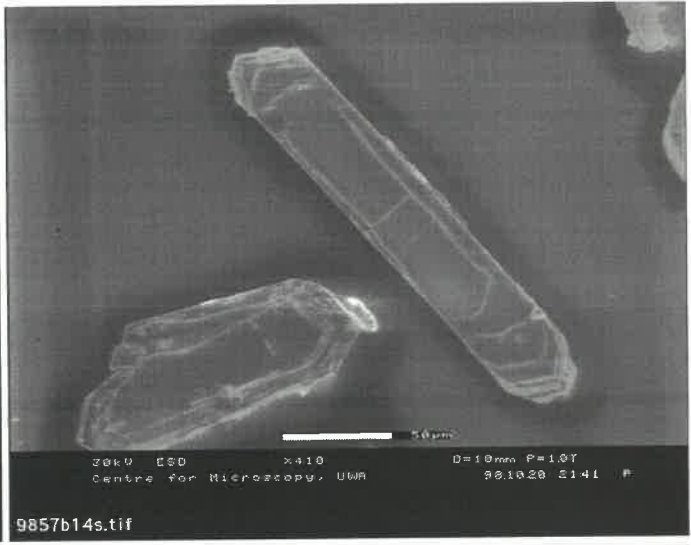
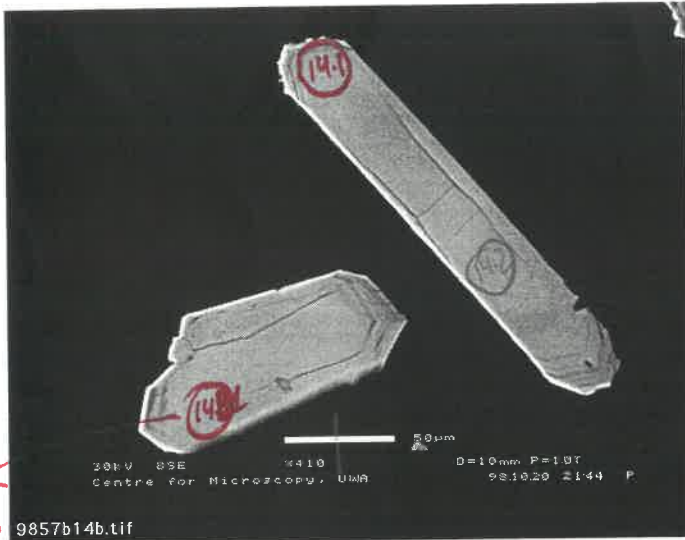
high 200 Pb  
Absorbed



Eficeias granite ( 4 ) 22.10.98

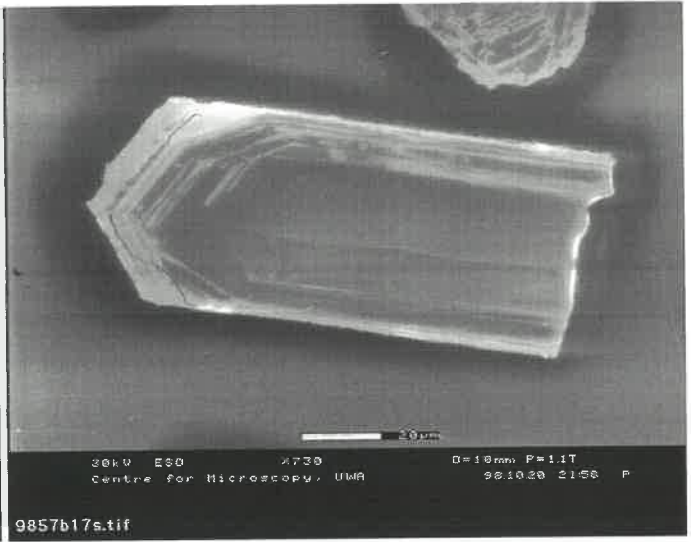
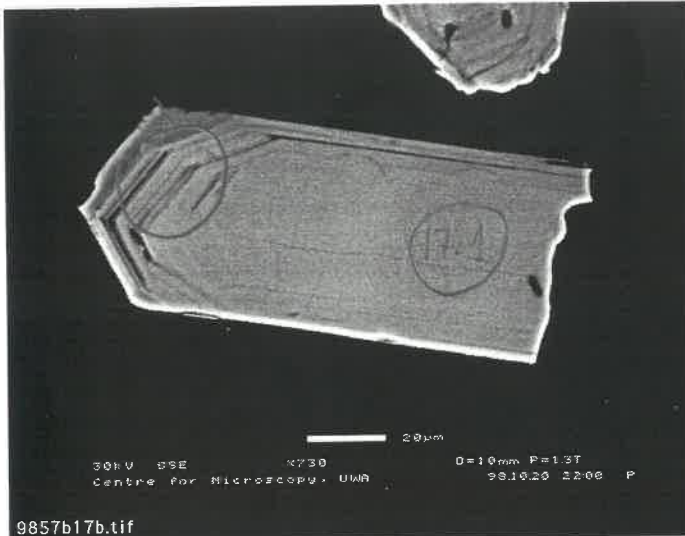


Eficeias granite ( 5 ) 22.10.98



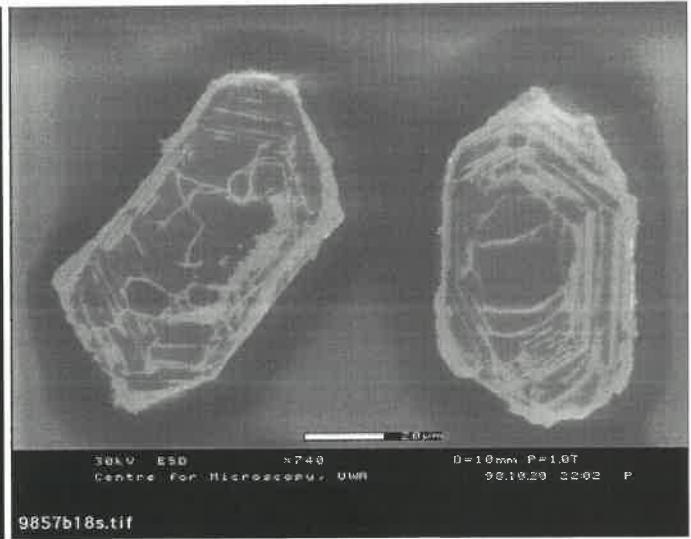
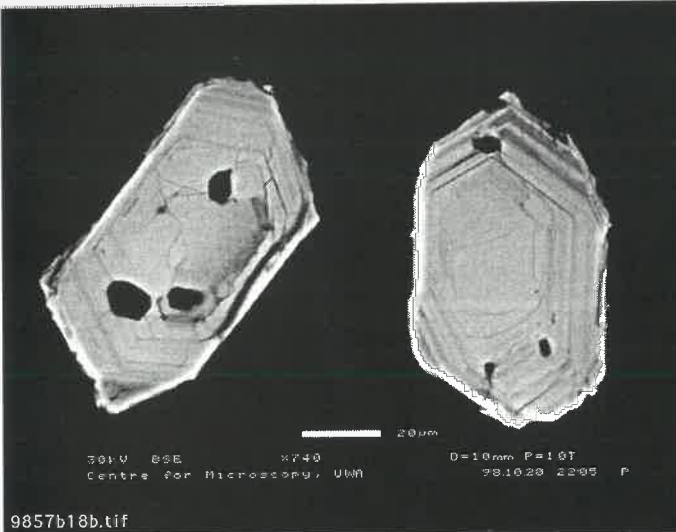
Eficeias granite ( 6 ) 22.10.98

N



9857b17b.tif

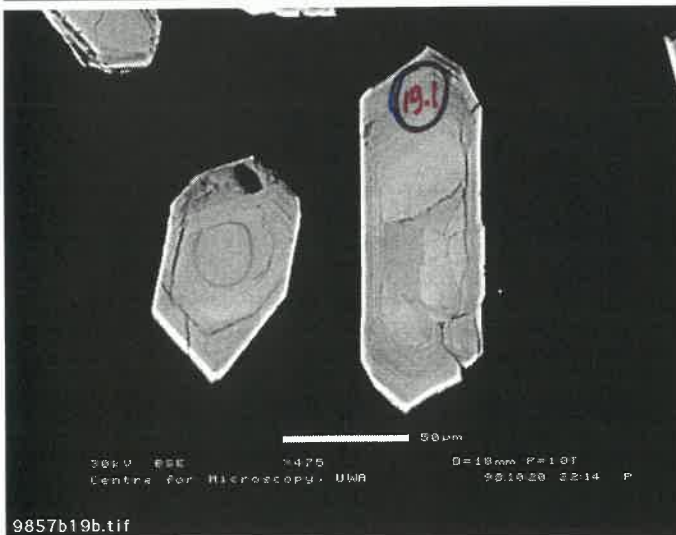
9857b17s.tif



9857b18b.tif

9857b18s.tif

0  
N



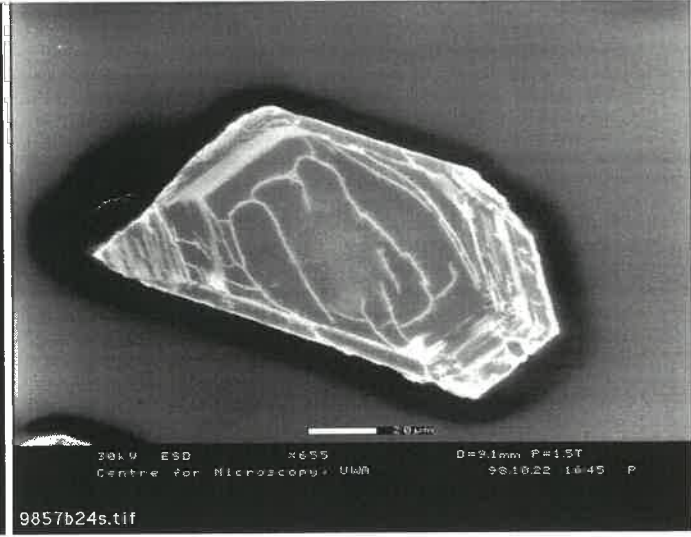
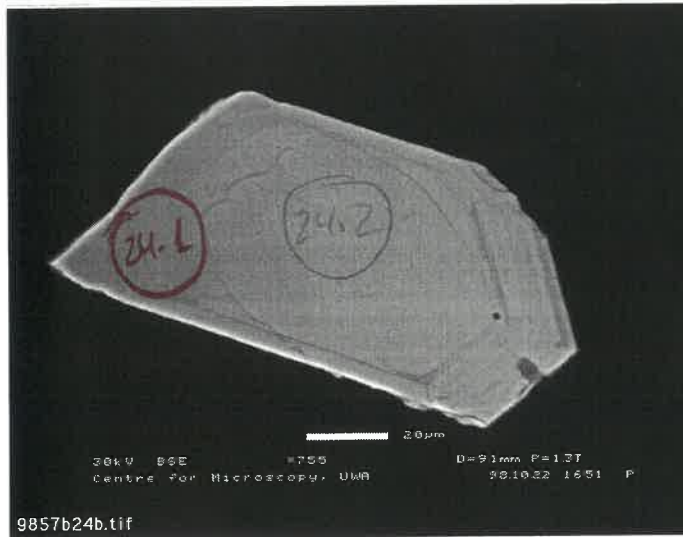
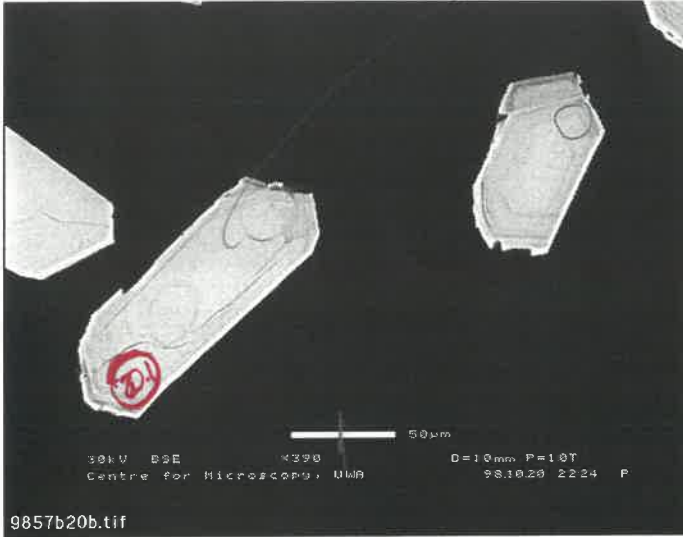
9857b19b.tif

9857b19s.tif

Eficeias granite (7) 22.10.98

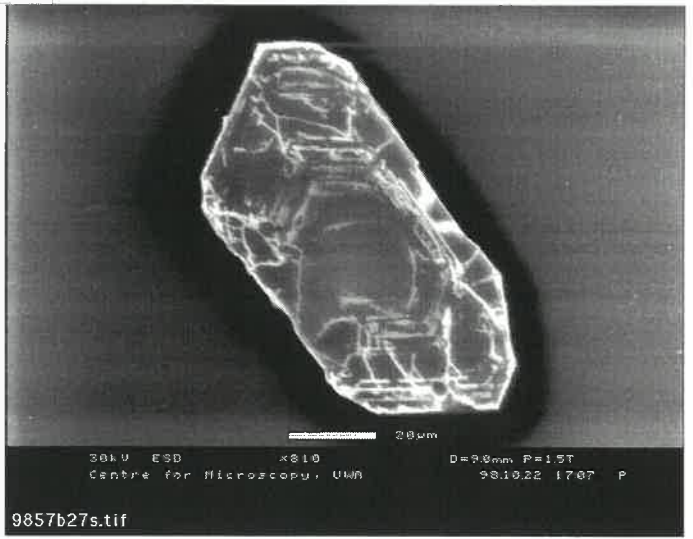
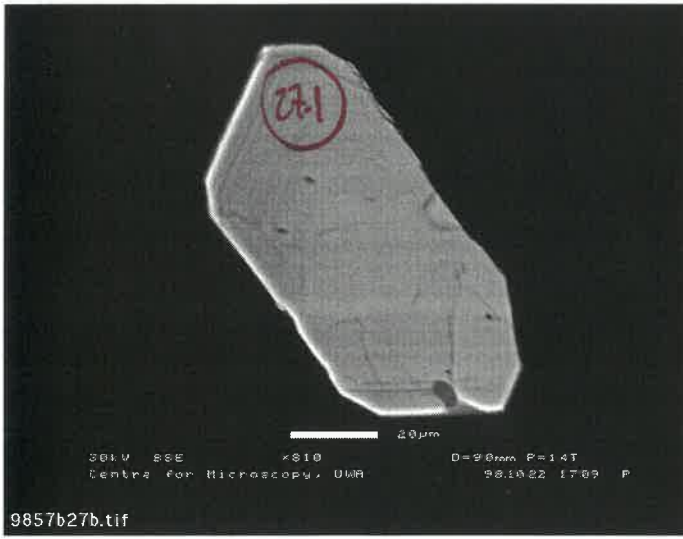
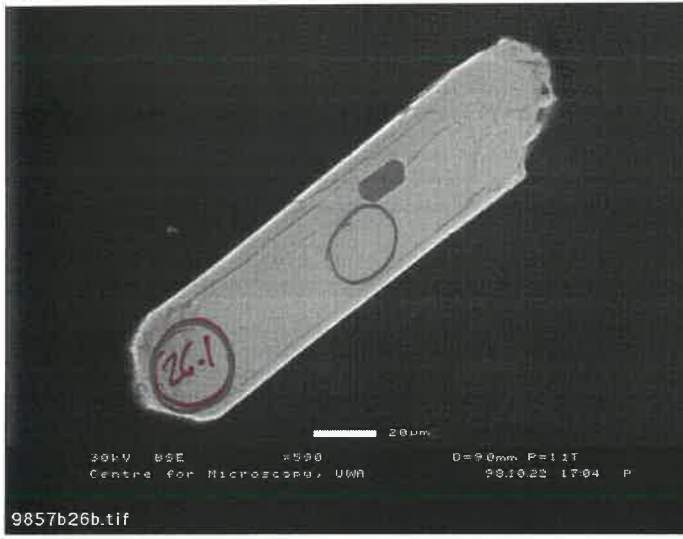
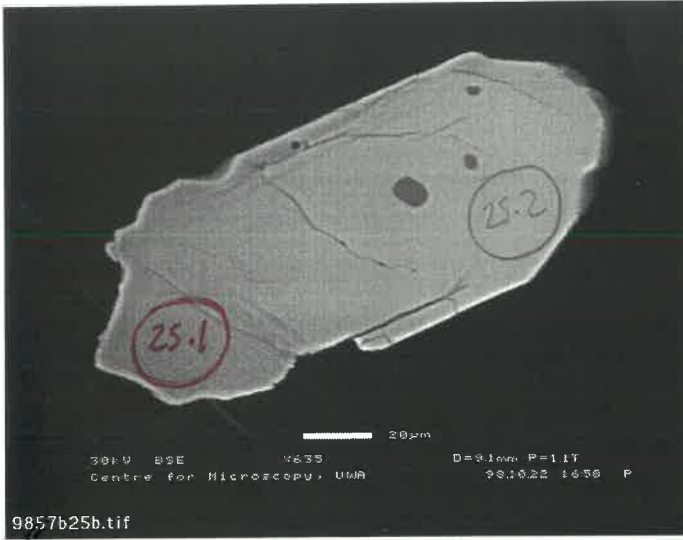
Handwritten notes: 204/76, 11/10, Mounted.

Handwritten mark: Z



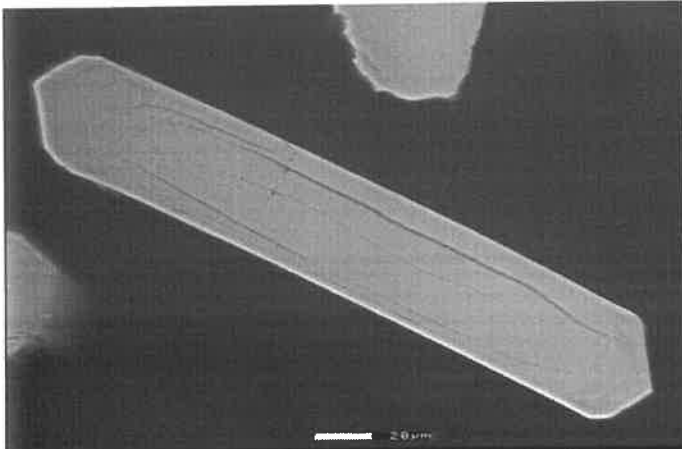
Eficeias granite ( 8 ) 22.10.98

B



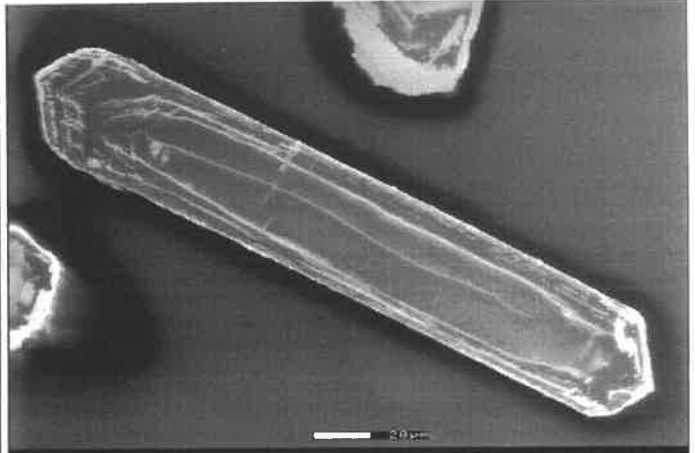


Eficeias granite ( 9 ) 22.10.98



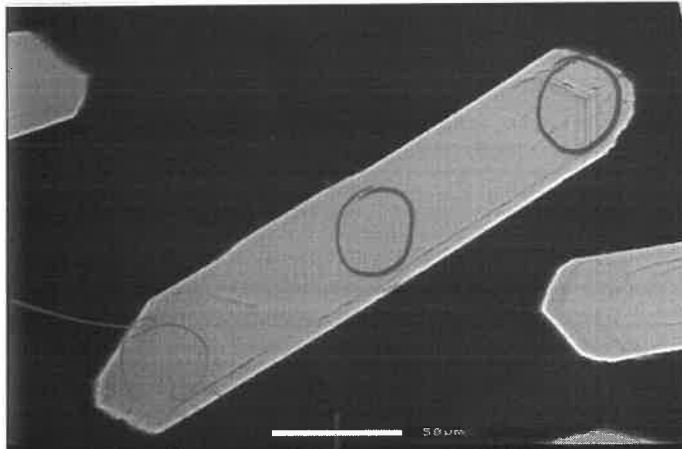
30kV BSE x525 D=9.1mm P=1.4T  
Centre for Microscopy, UWA 98.10.22 17:19 P

9857b28b.tif



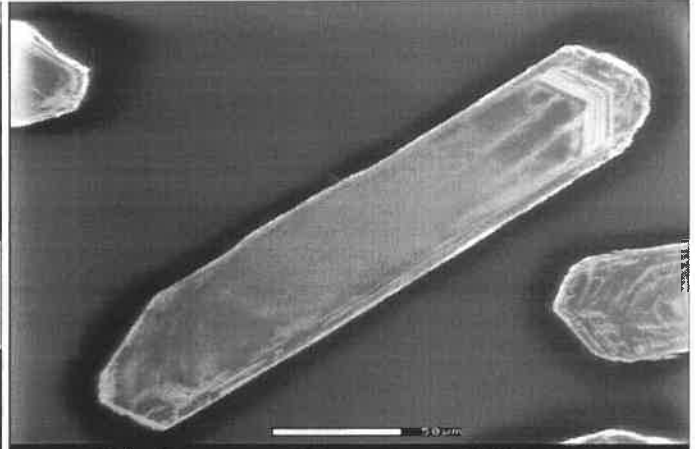
30kV ESD x525 D=9.1mm P=1.4T  
Centre for Microscopy, UWA 98.10.22 17:15 P

9857b28s.tif



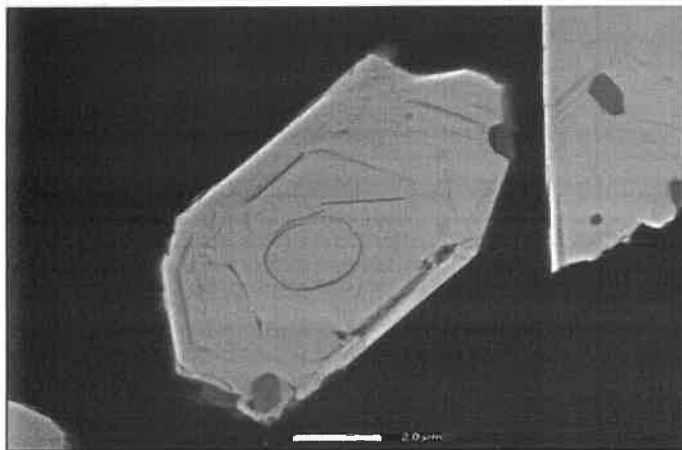
30kV BSE x485 D=9.1mm P=1.1T  
Centre for Microscopy, UWA 98.10.22 17:26 P

9857b29b.tif



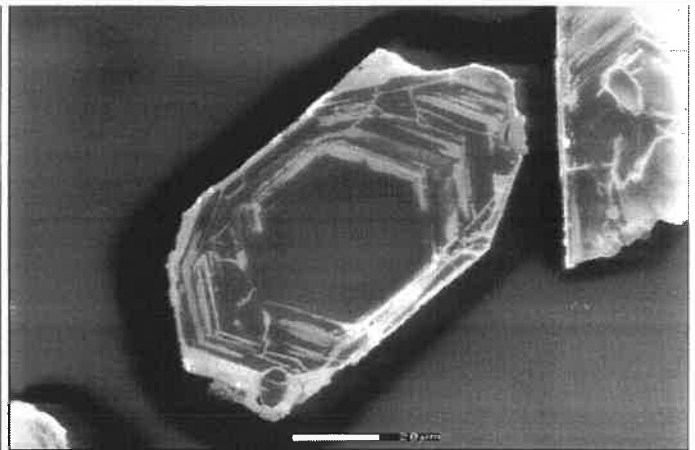
30kV ESD x485 D=9.1mm P=1.4T  
Centre for Microscopy, UWA 98.10.22 17:22 P

9857b29s.tif



30kV BSE x810 D=9.0mm P=1.1T  
Centre for Microscopy, UWA 98.10.22 17:30 P

9857b30b.tif

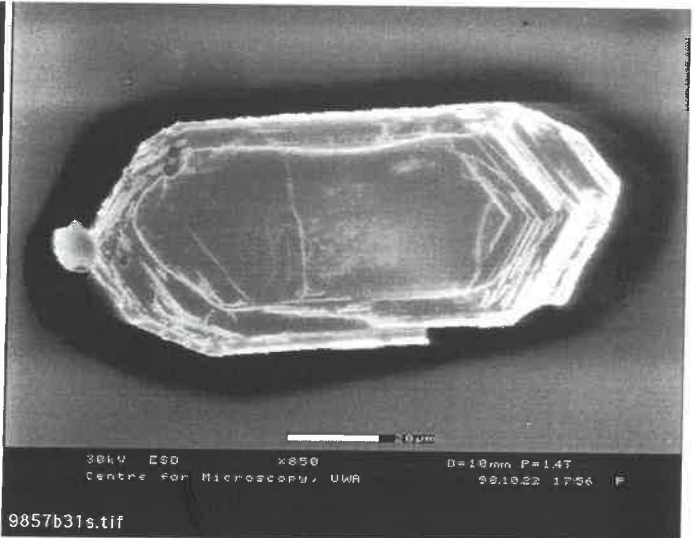
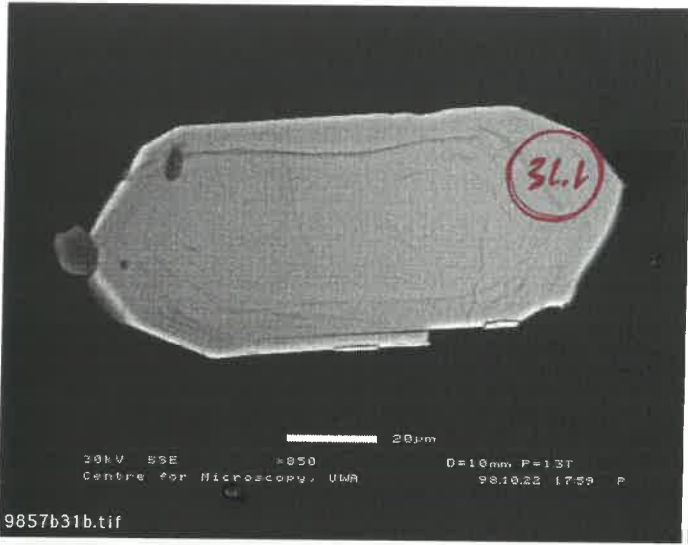


30kV ESD x810 D=9.0mm P=1.1T  
Centre for Microscopy, UWA 98.10.22 17:30 P

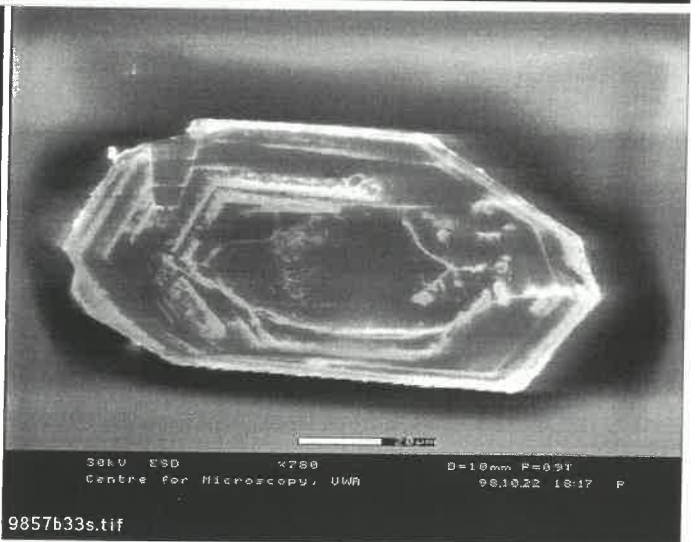
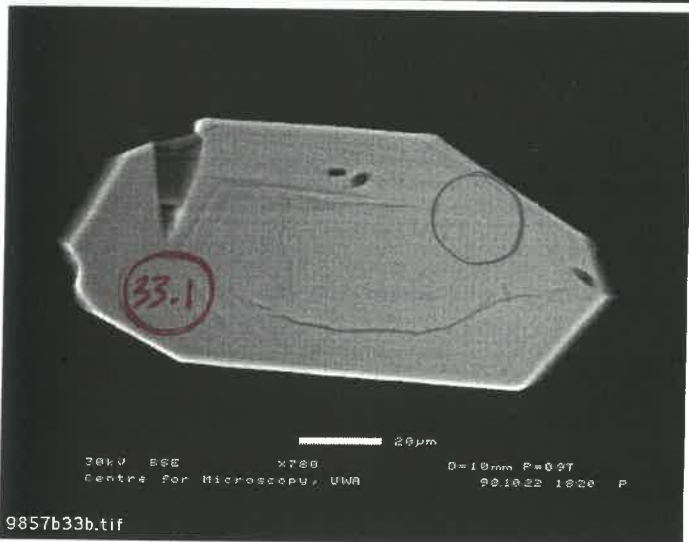
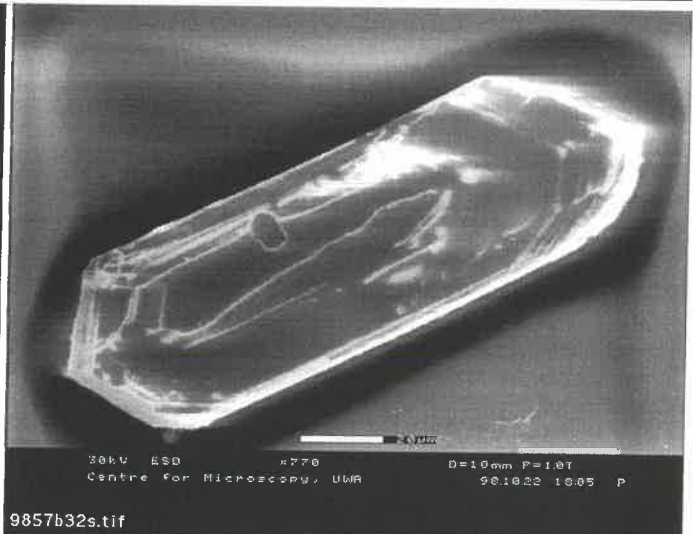
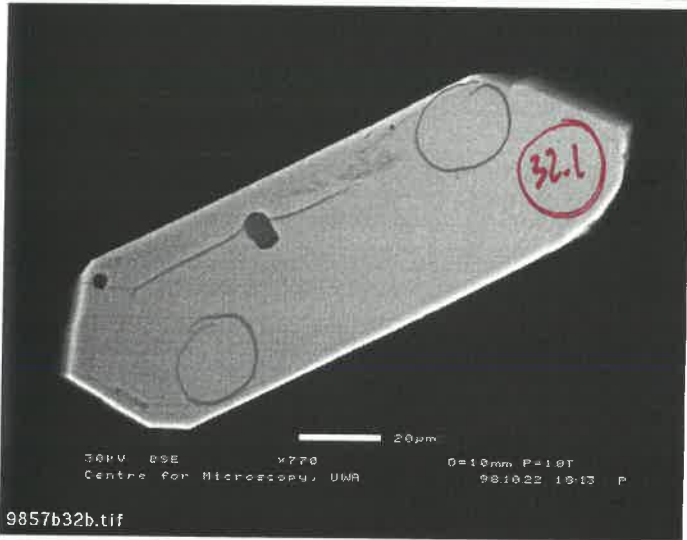
9857b30s.tif

Eficeias granite (10) 22.10.98

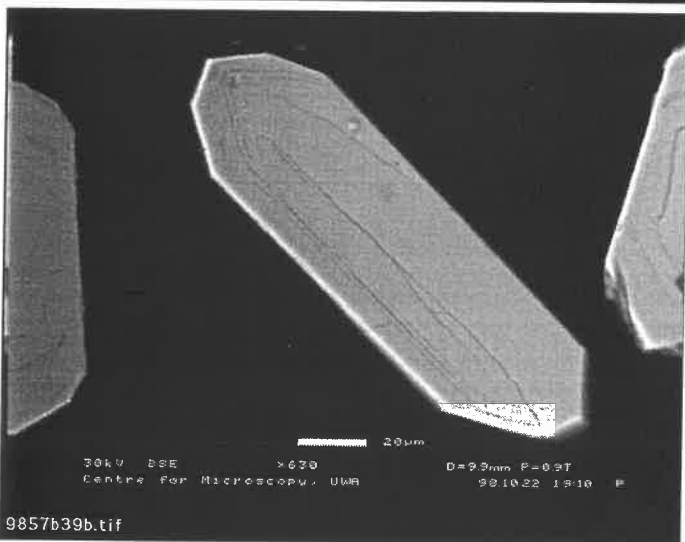
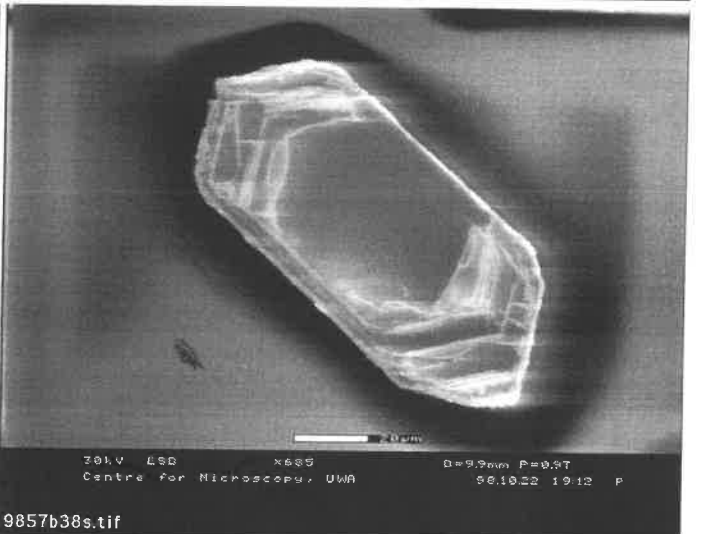
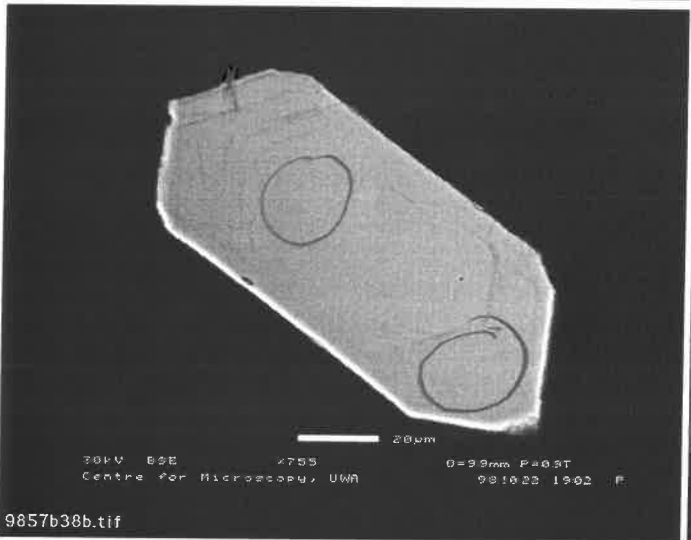
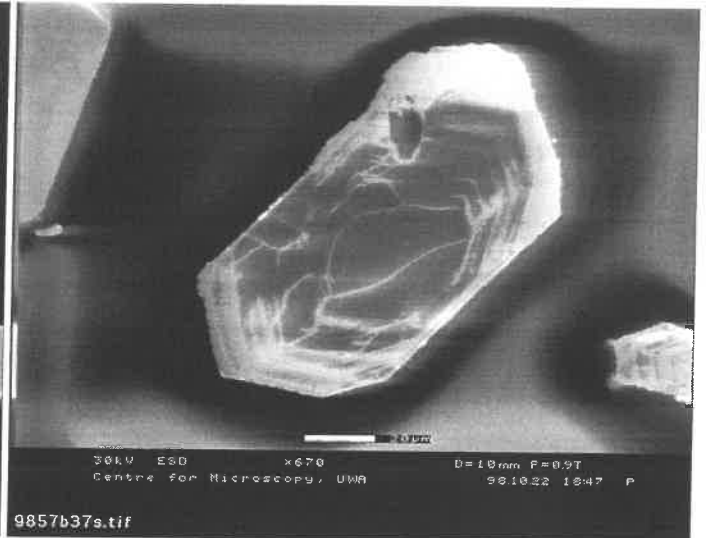
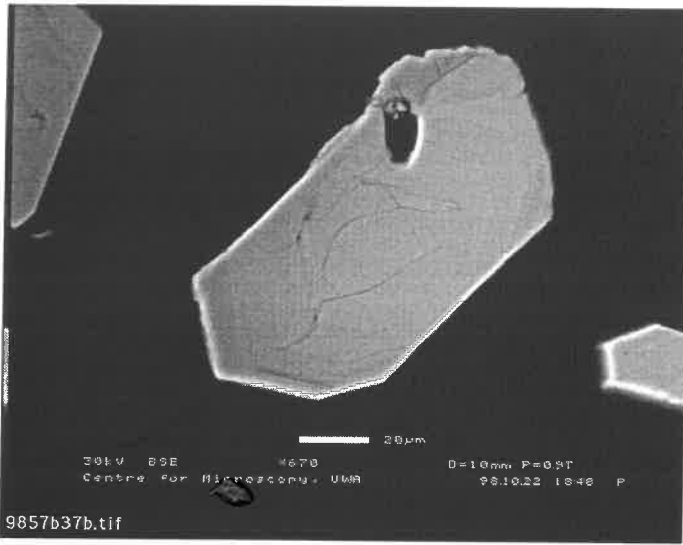
E



F

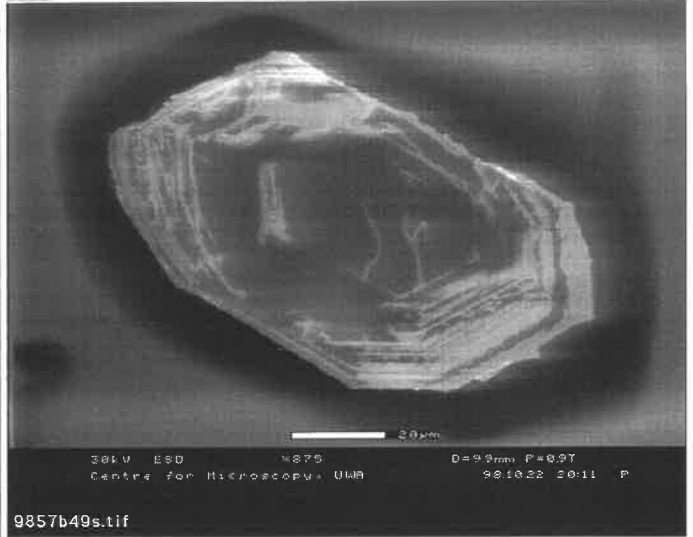
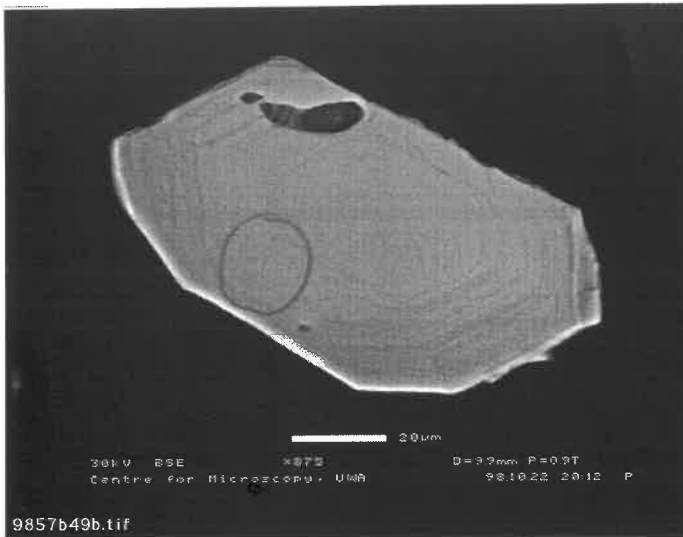


Eficeias granite (12) 22.10.98



Eficeias granite (16) 22.10.98

B



N

