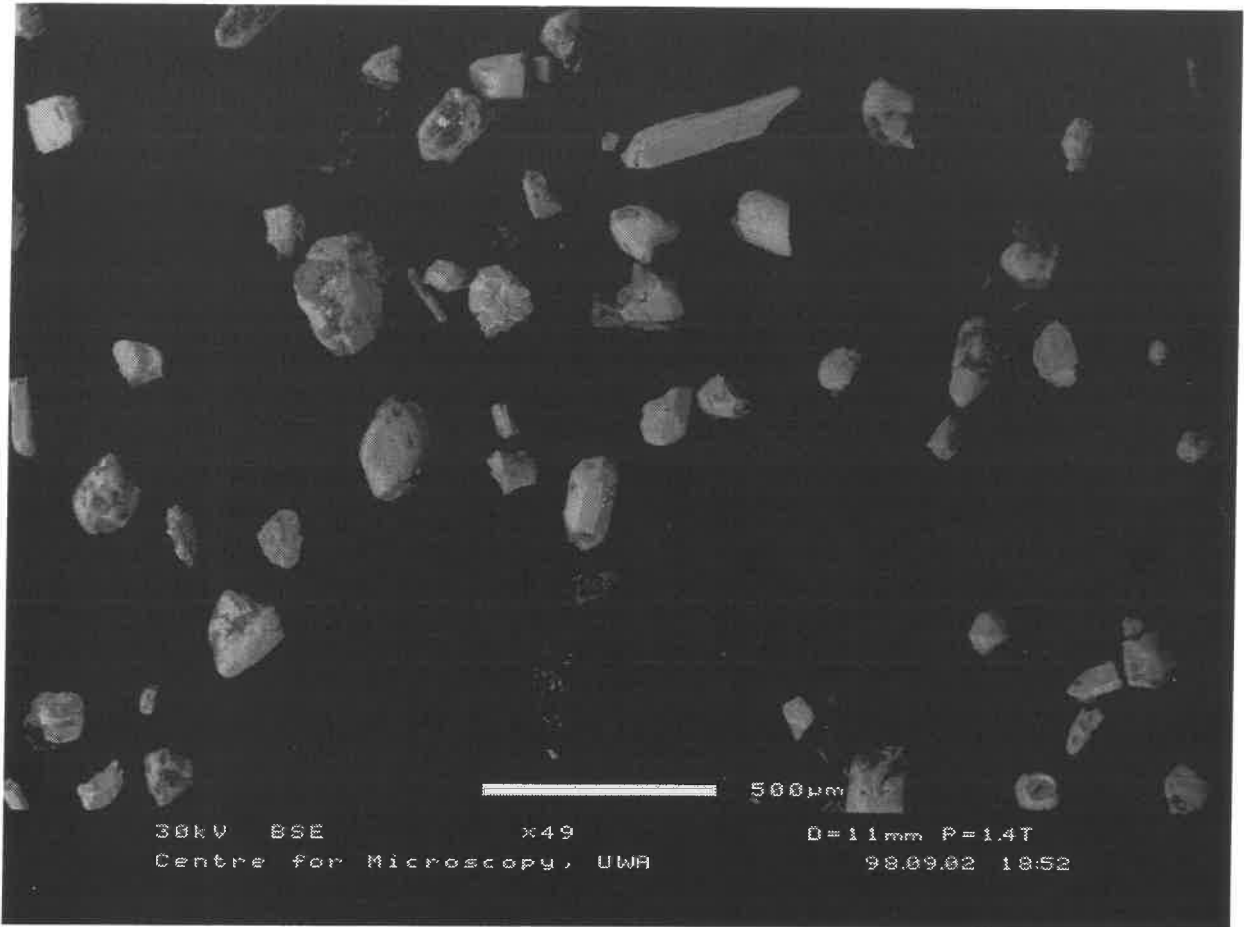


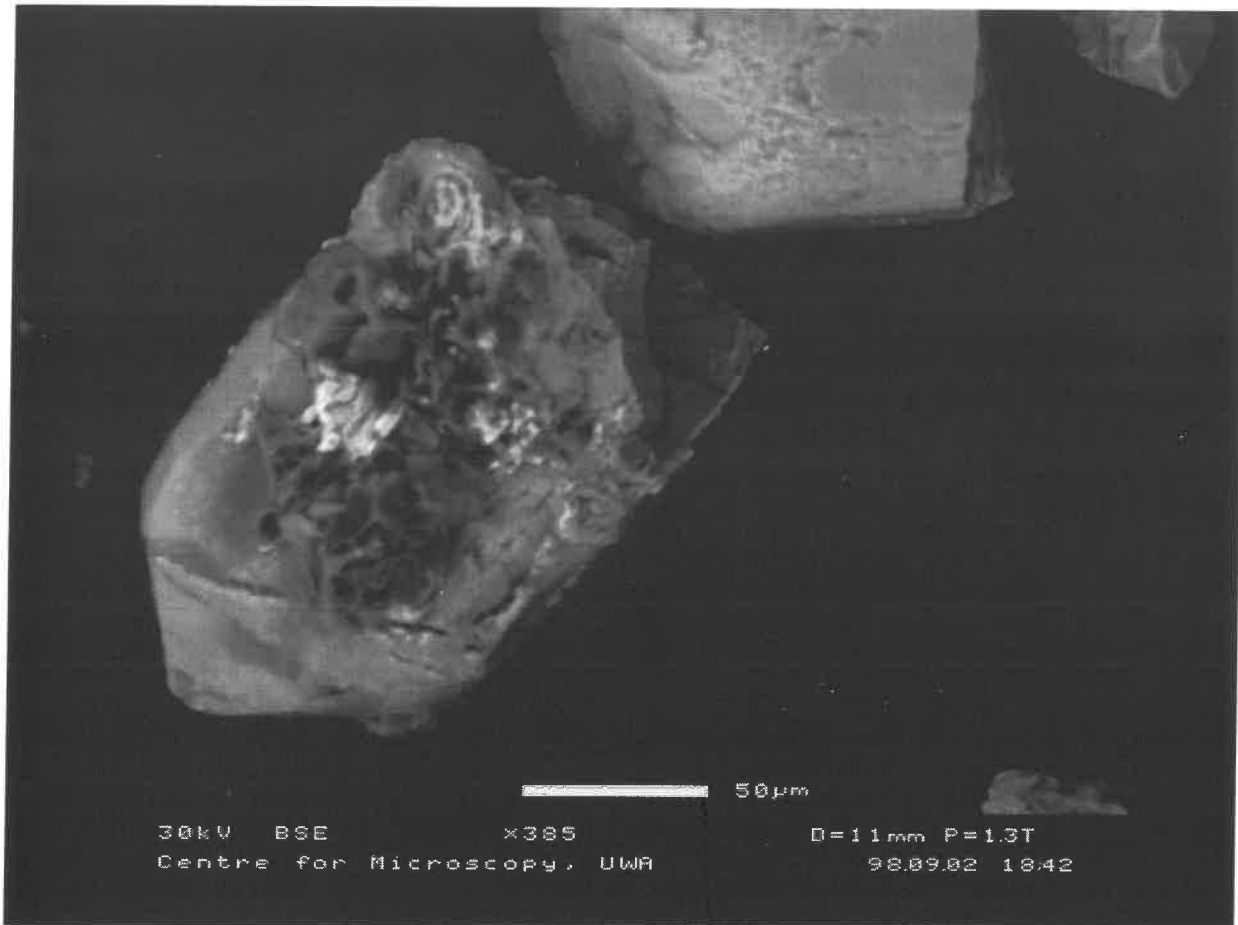
34



98-62A MBS.1

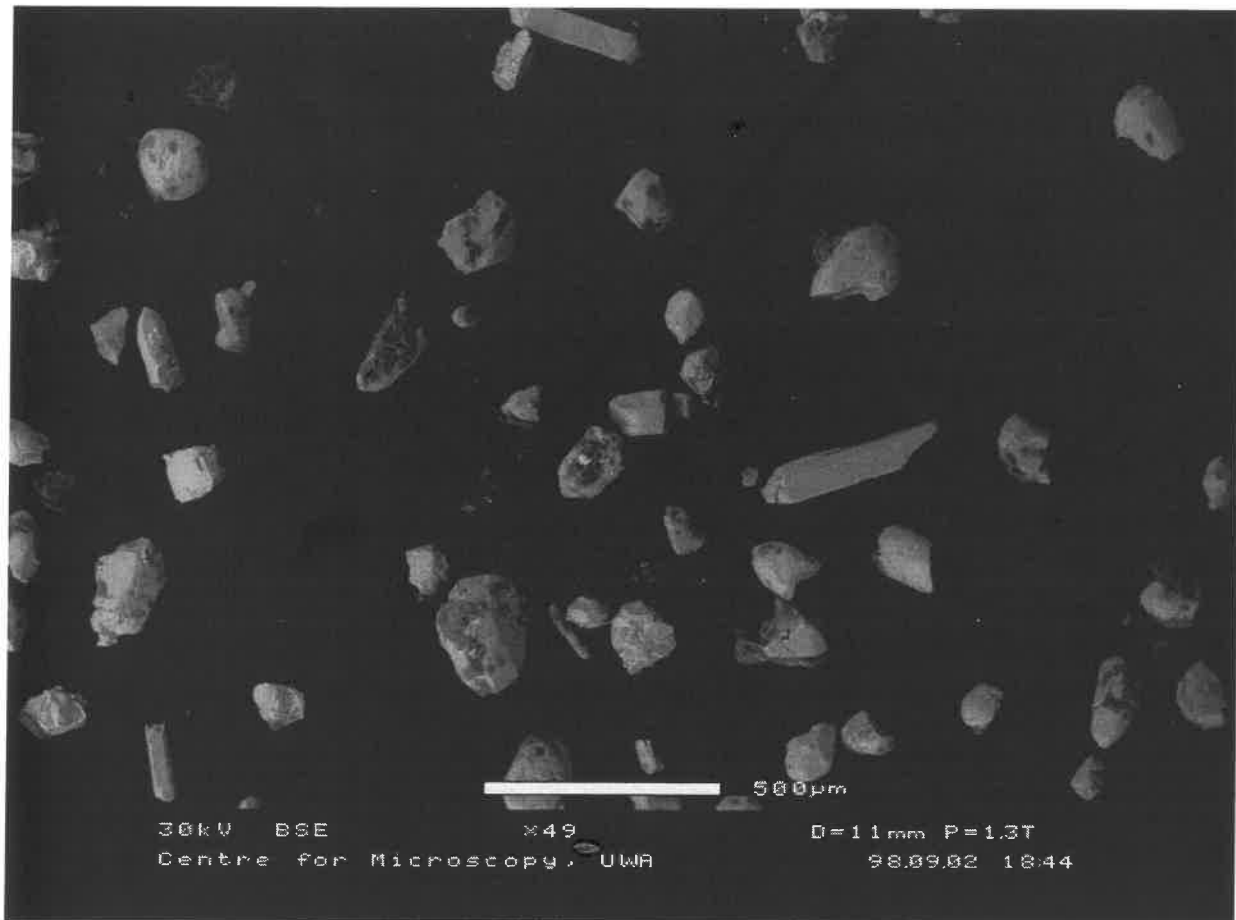


32



98-G2A MBS.1

33





A

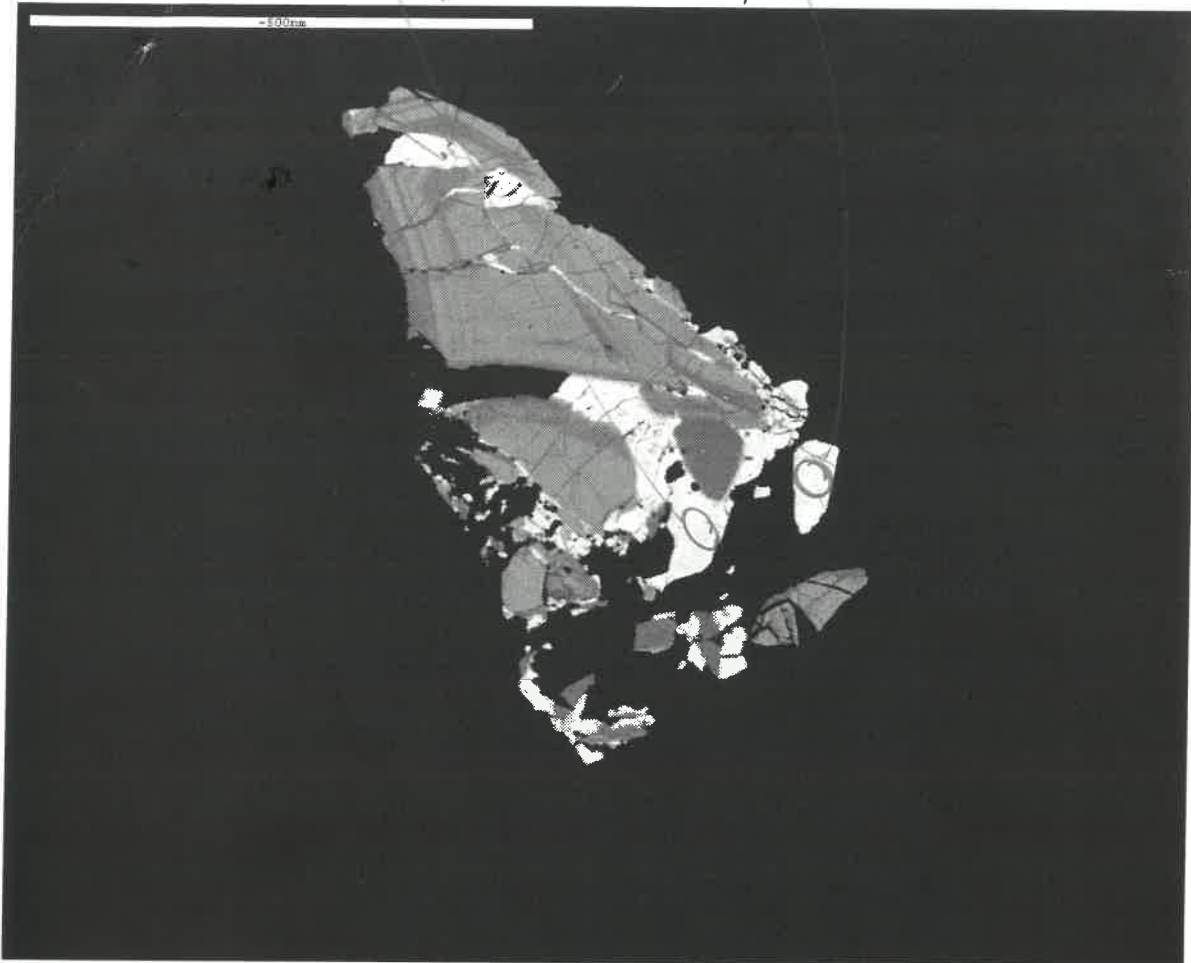
new

13-1

13-1x

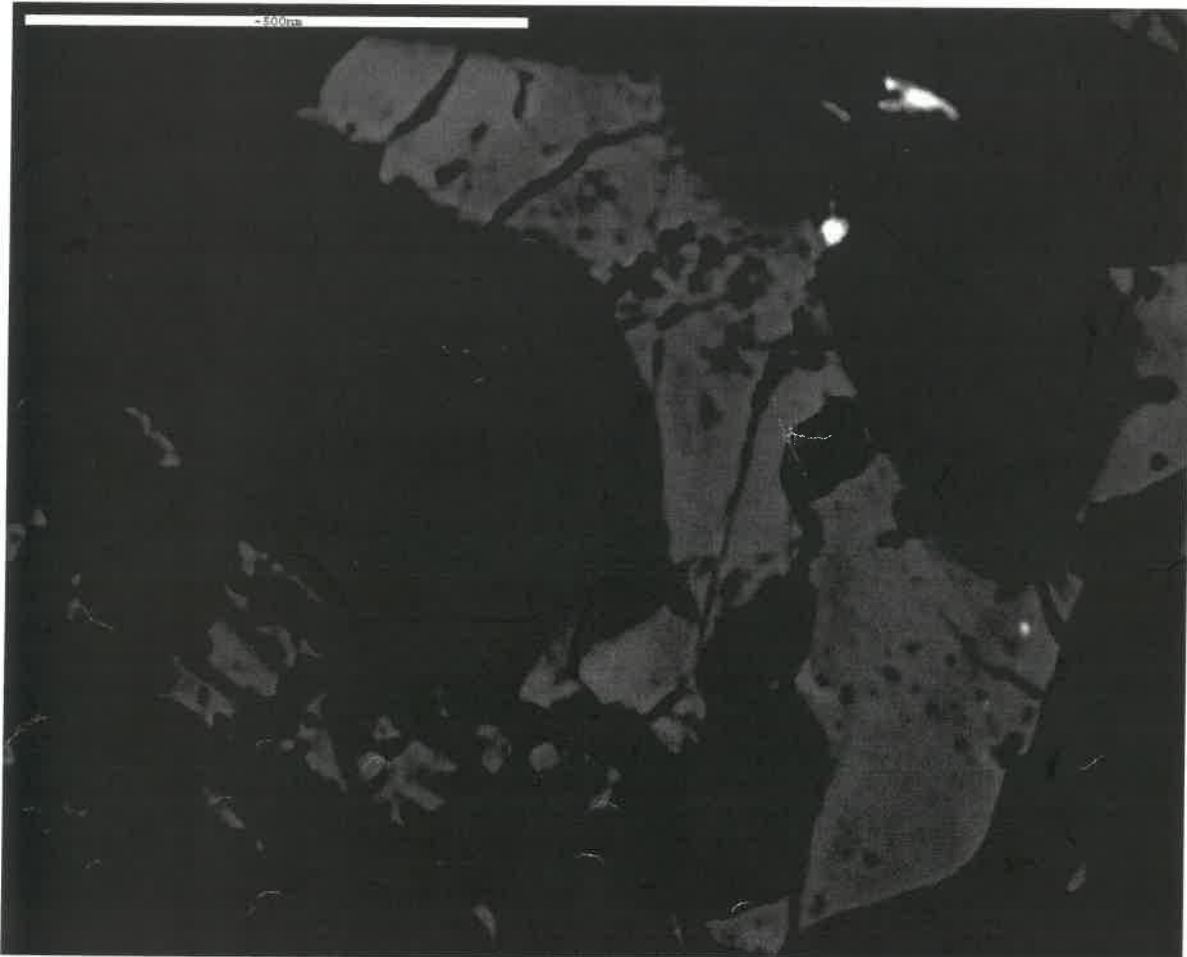
13-2

gw202



specimen 13

03



22-2

22-1

press.
2682

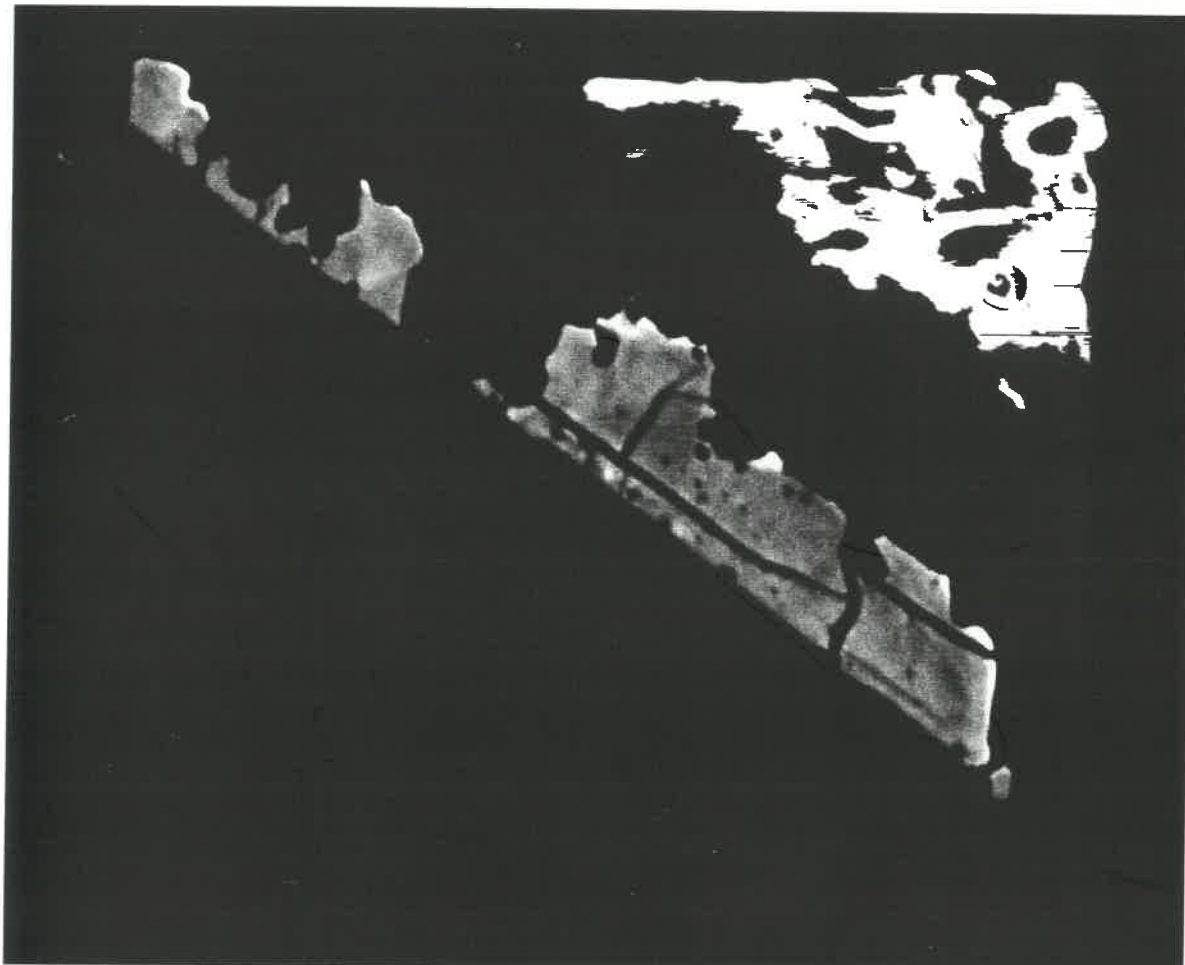
04

grain 22

f



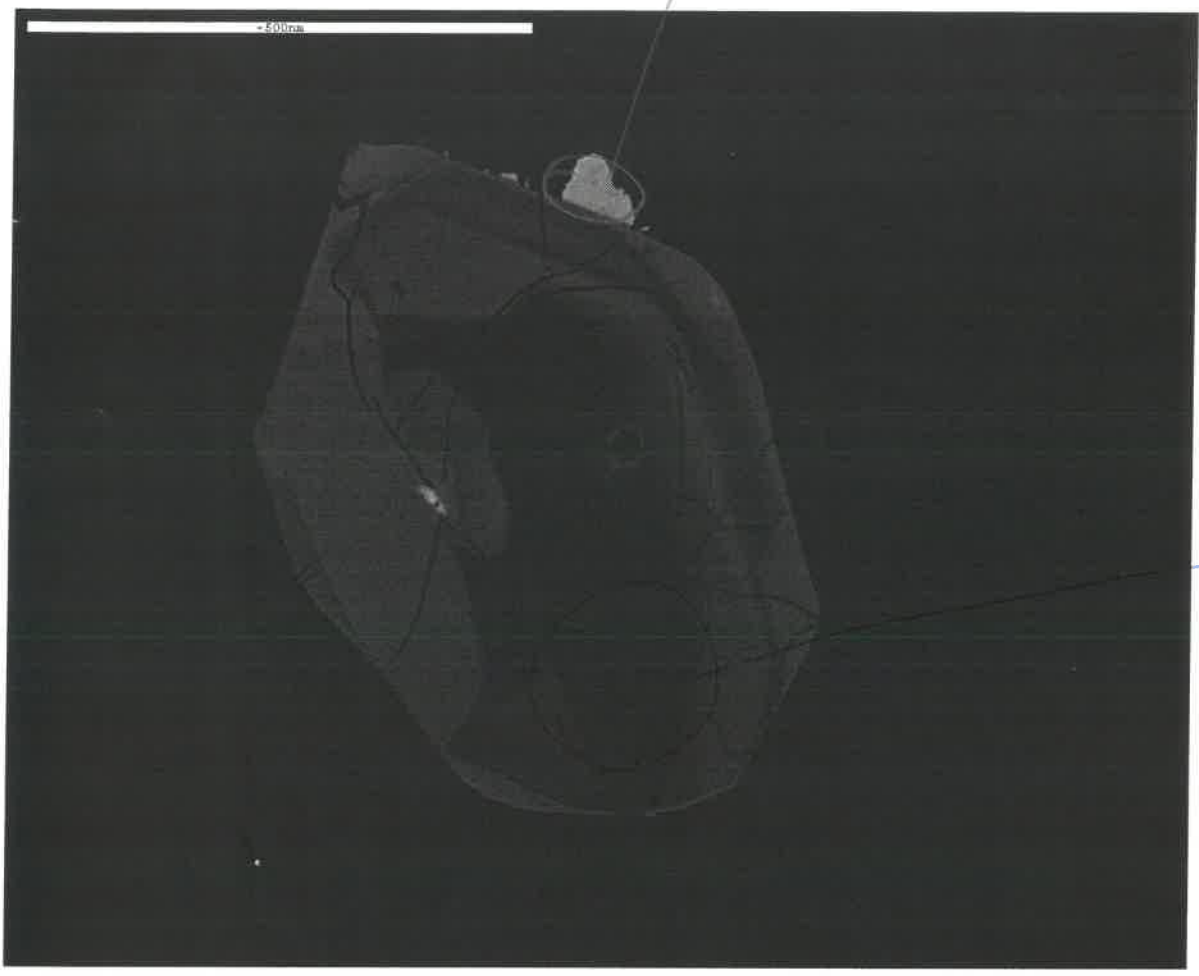
01



5

8

grain 35



new

35-1

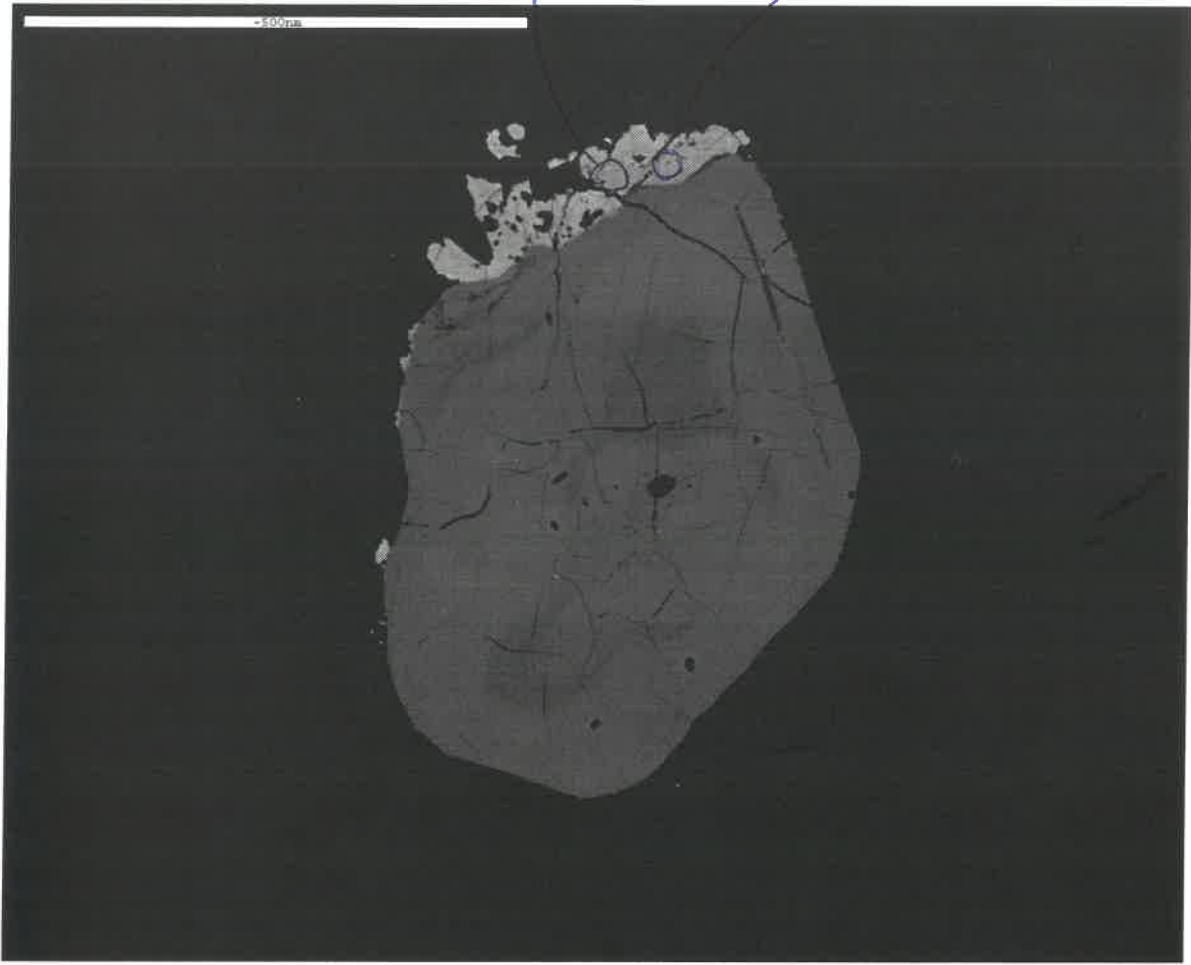
7



A 35.1

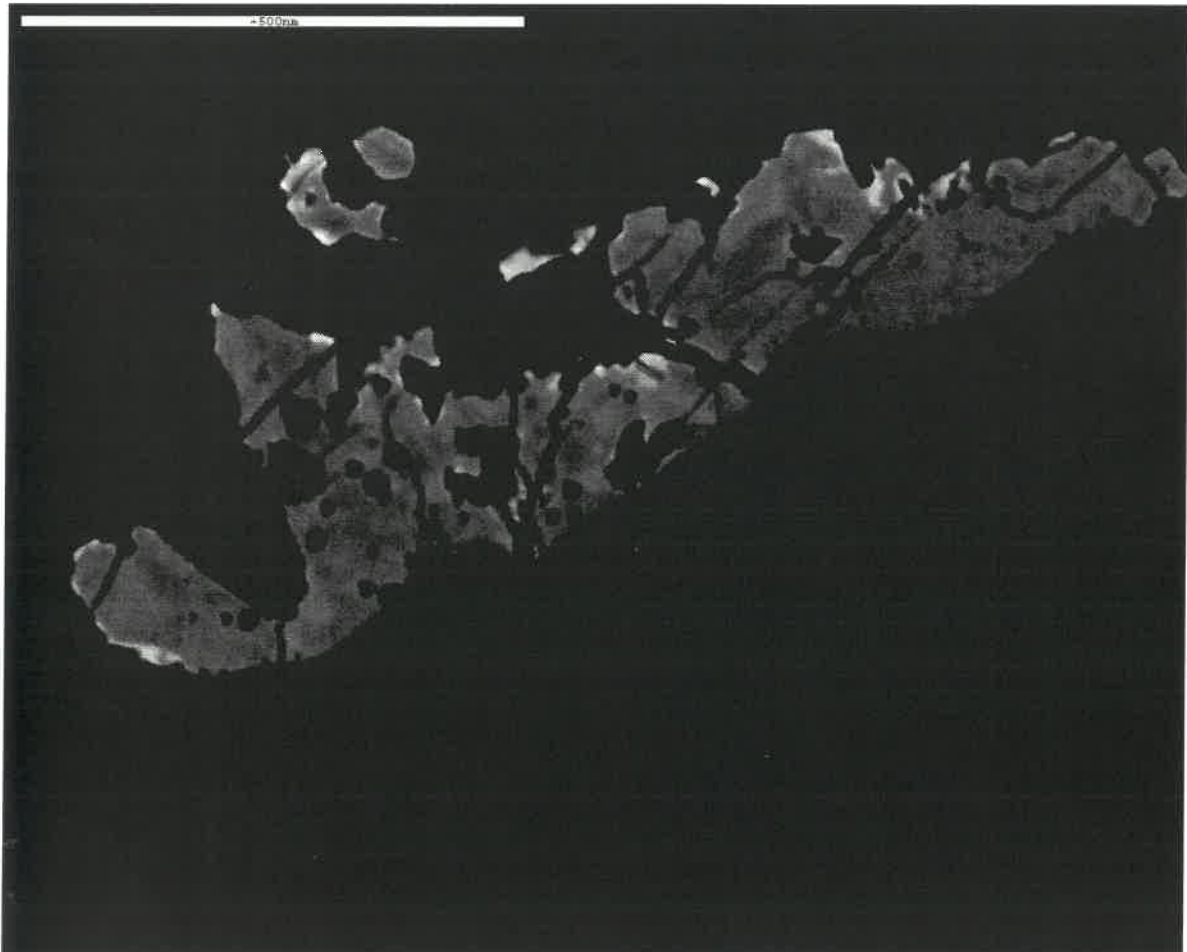
14

grain 4



me 14

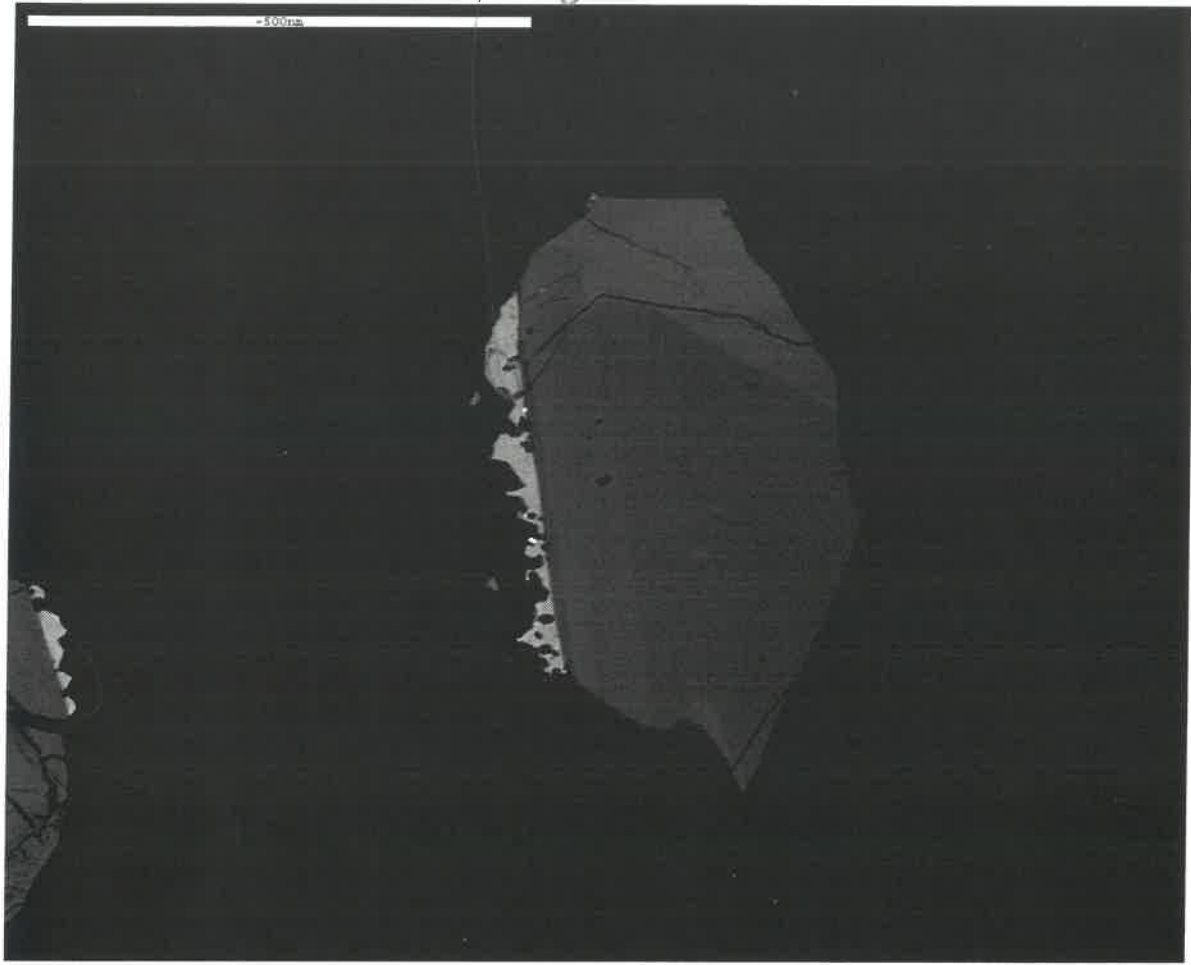
9



11

piece
2732

10-0

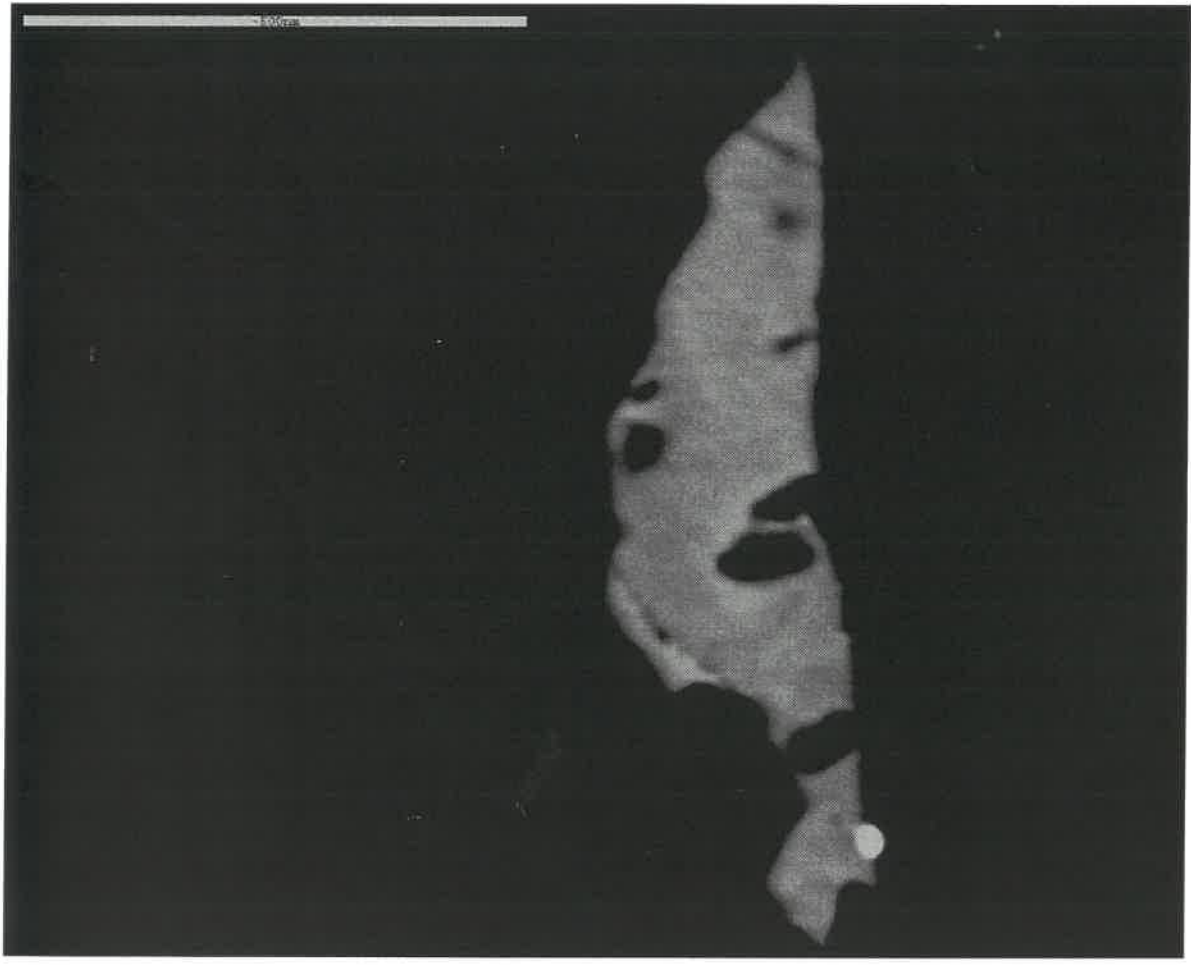


10

spec 10

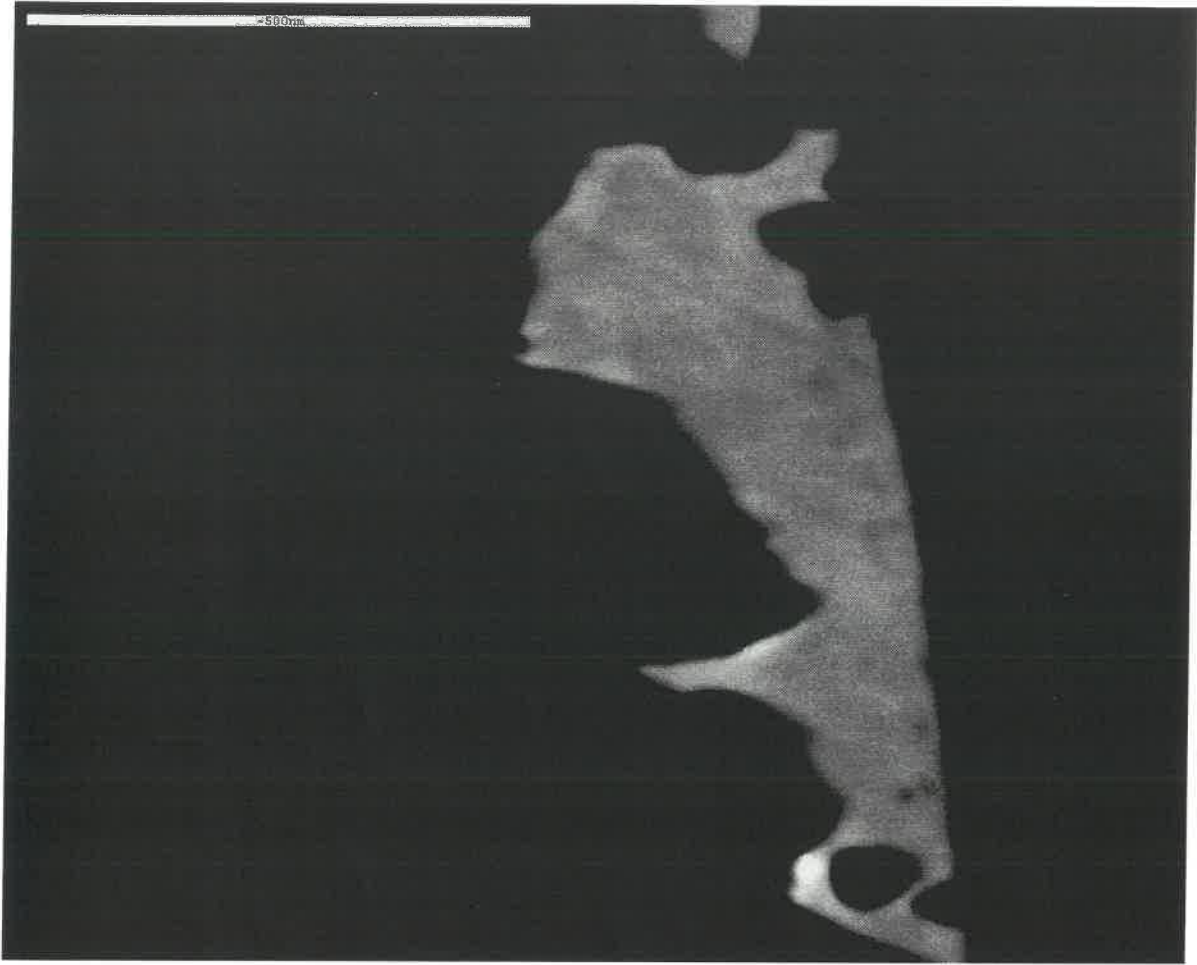


11

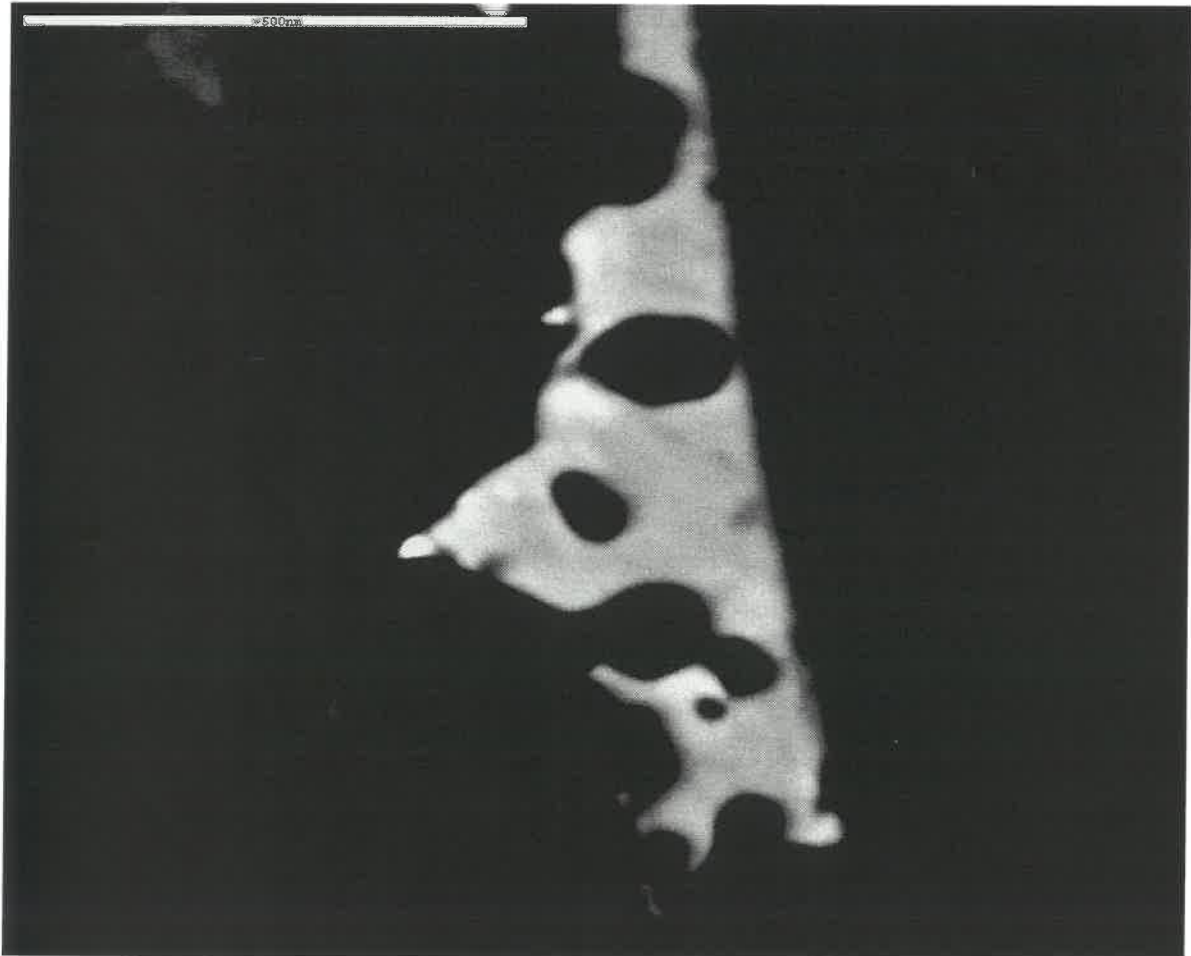


12

gren 10

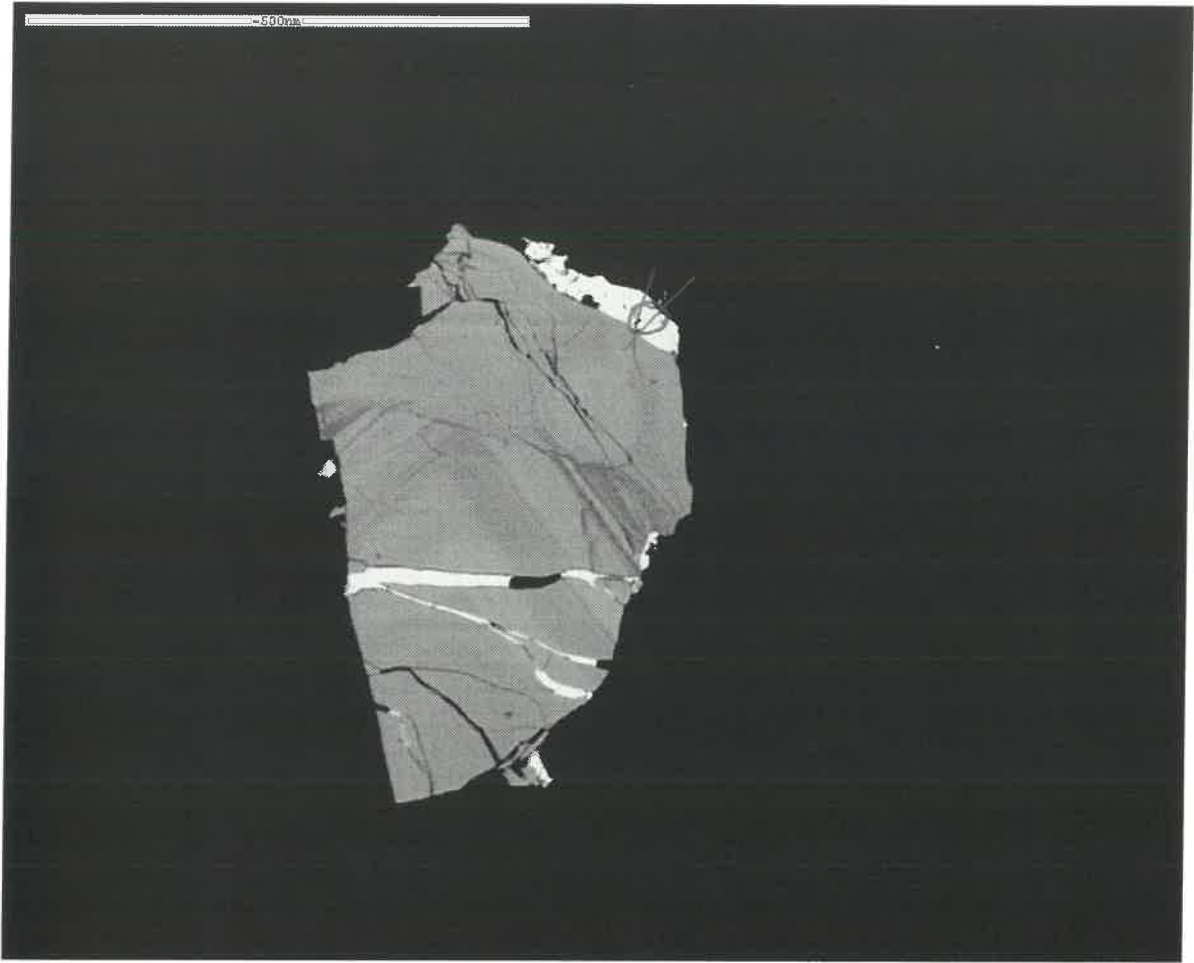


13



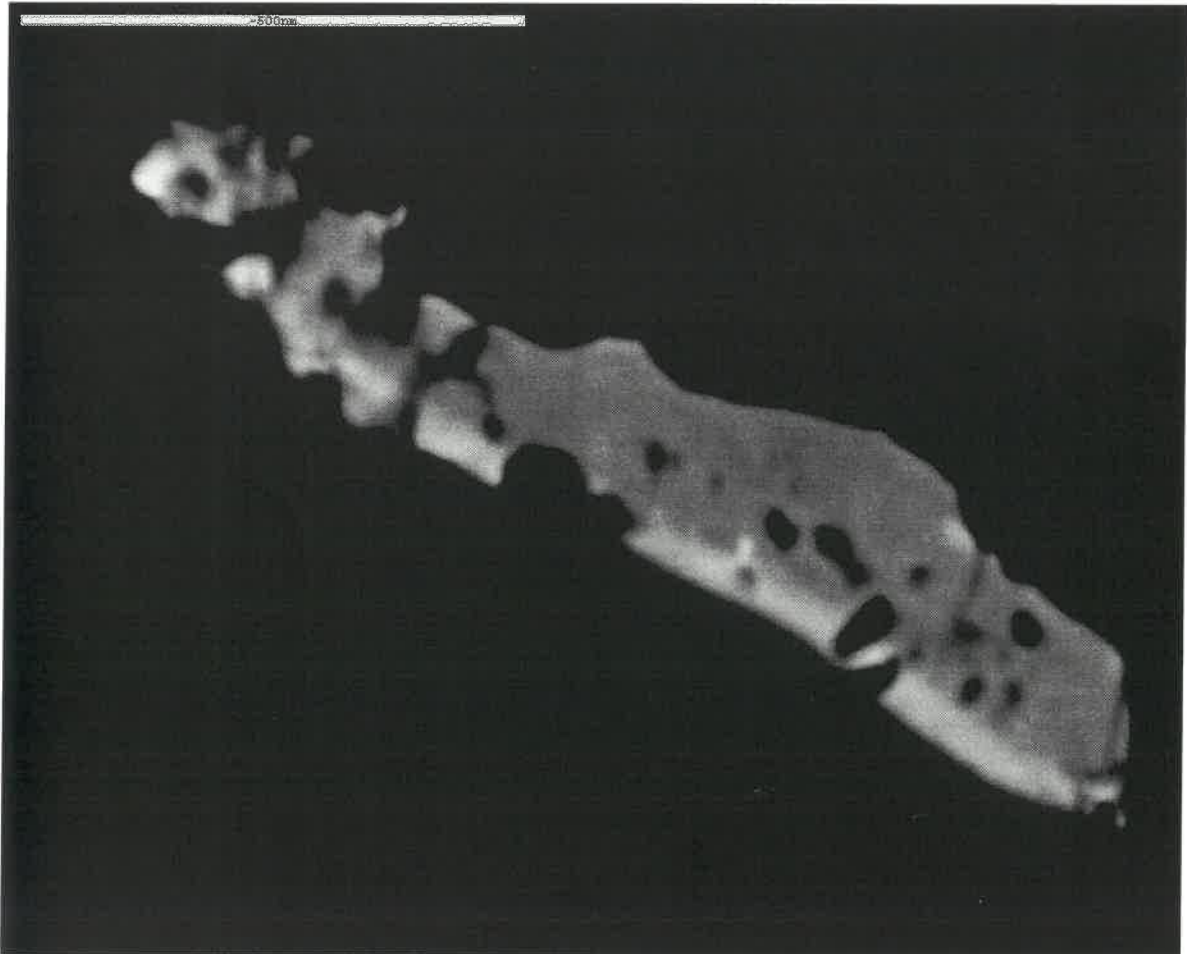
15
spec
36

new



X

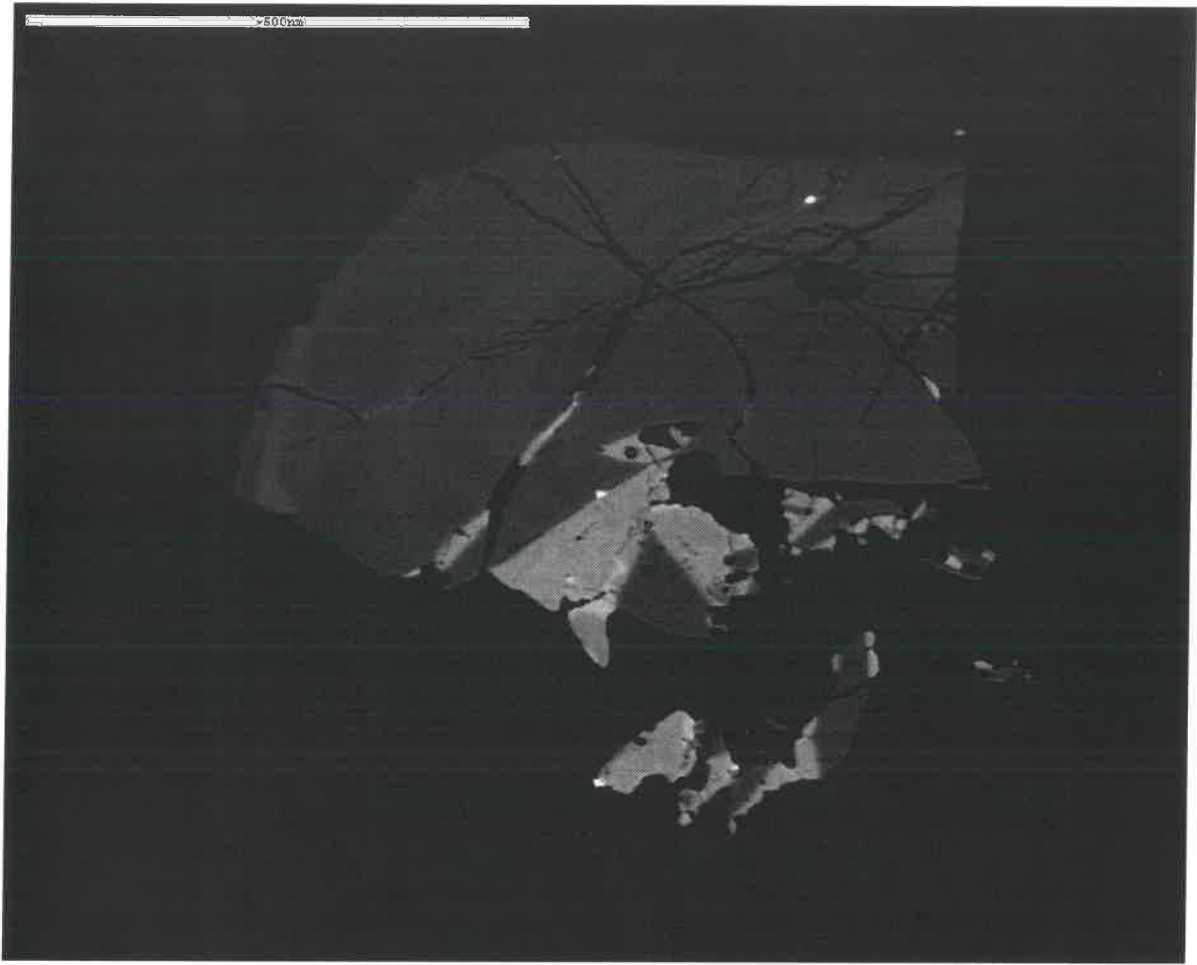
16



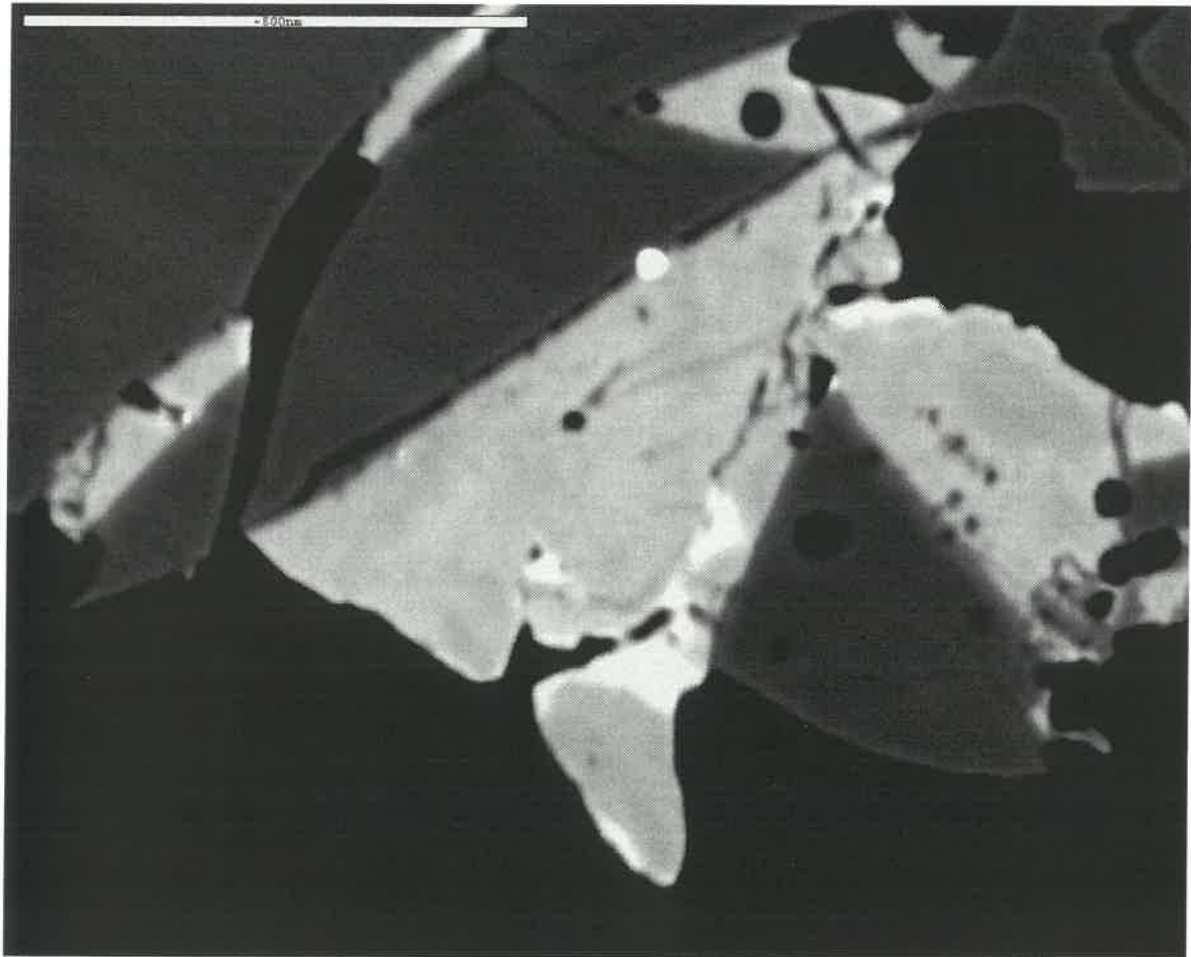
17

gen 1

prev.
2500



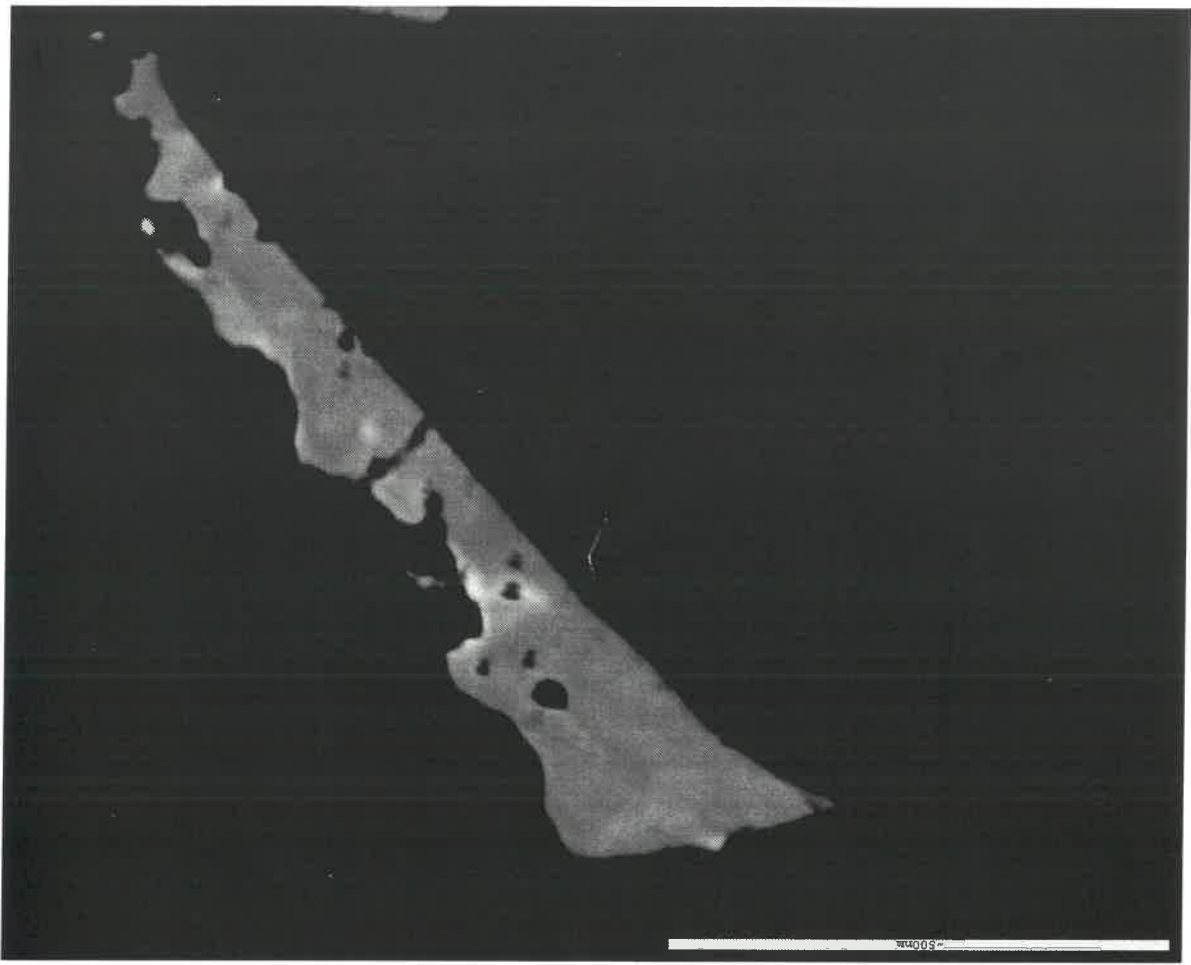
18



+

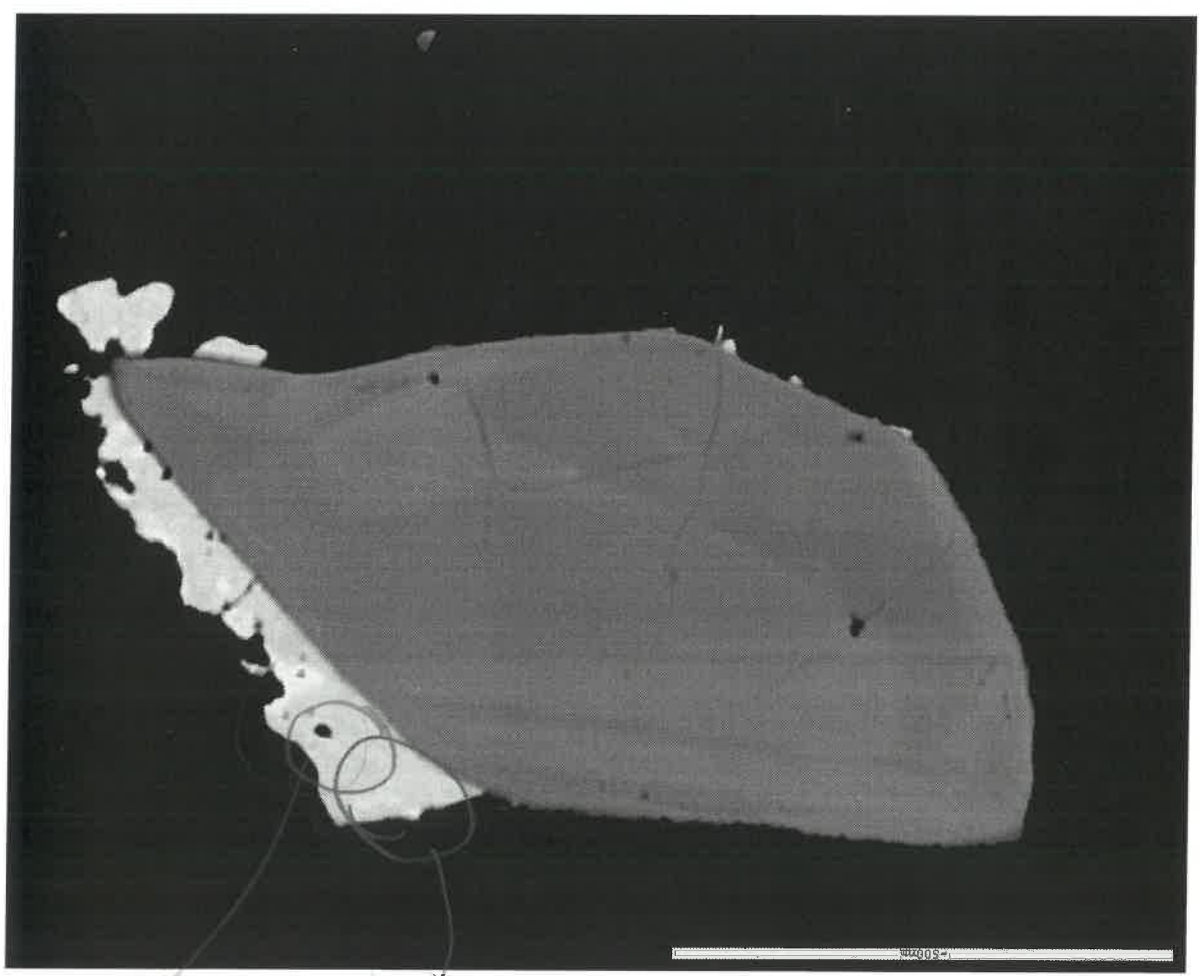
new

19



grain 17

20

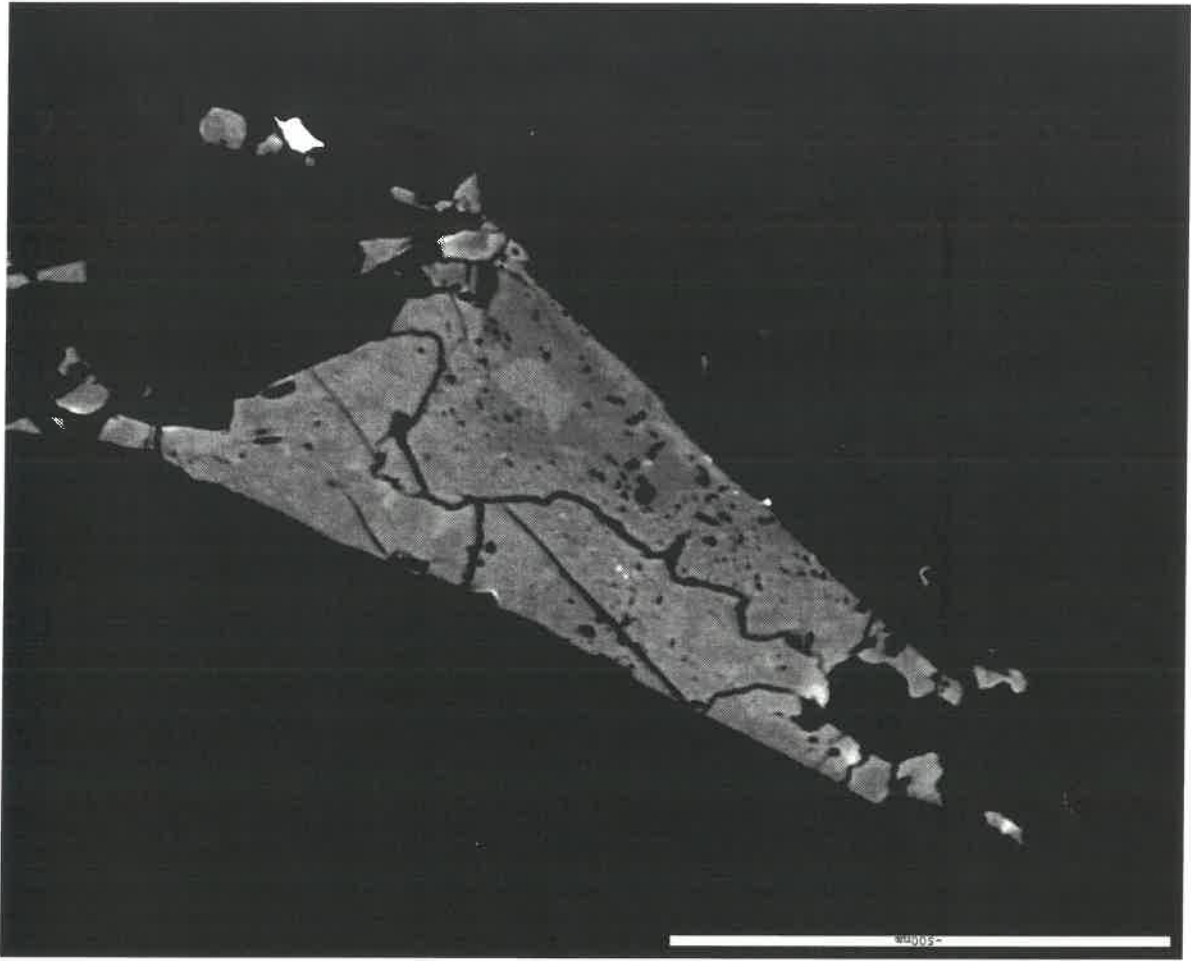


17-2
1-61

21
gran-19

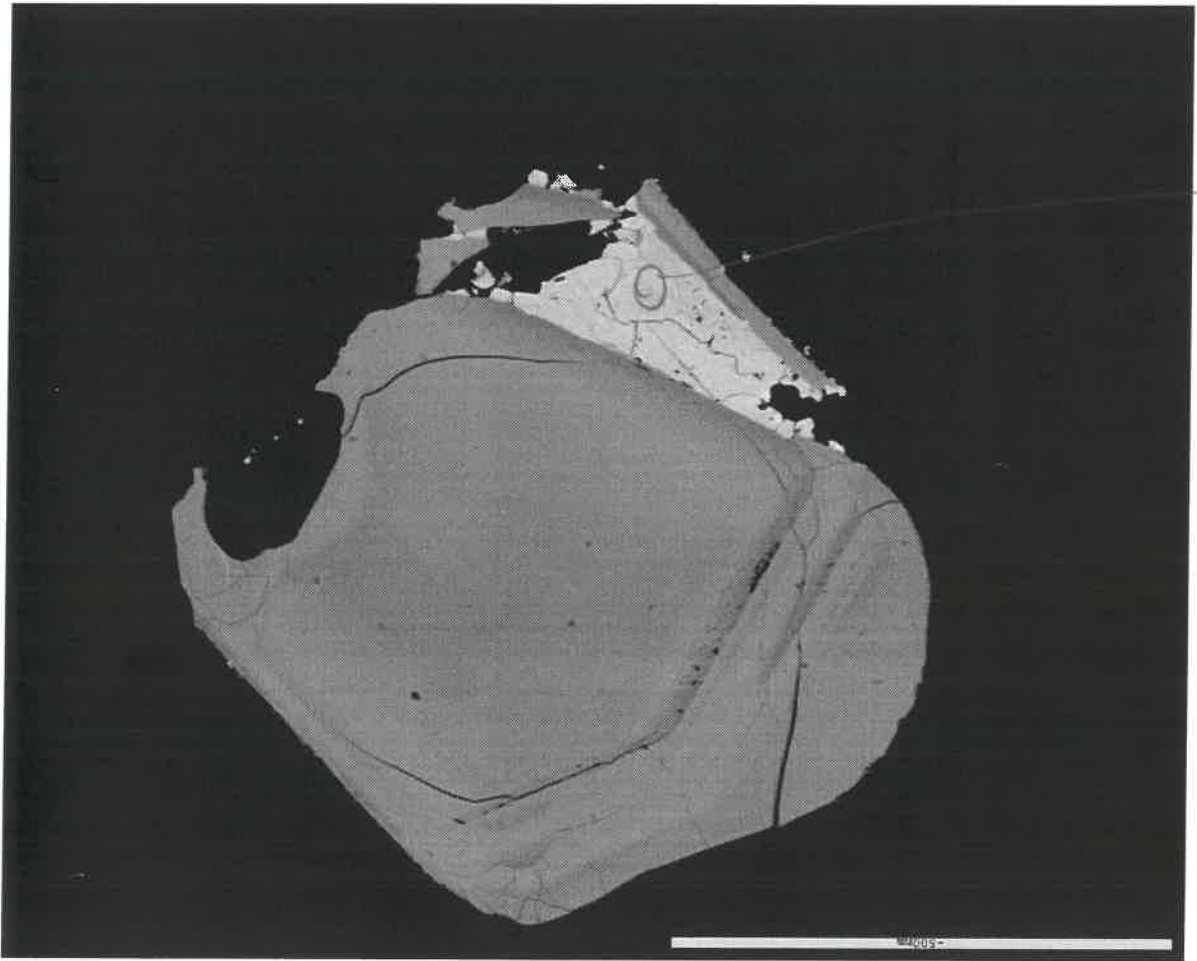
mw.
2541

f



22

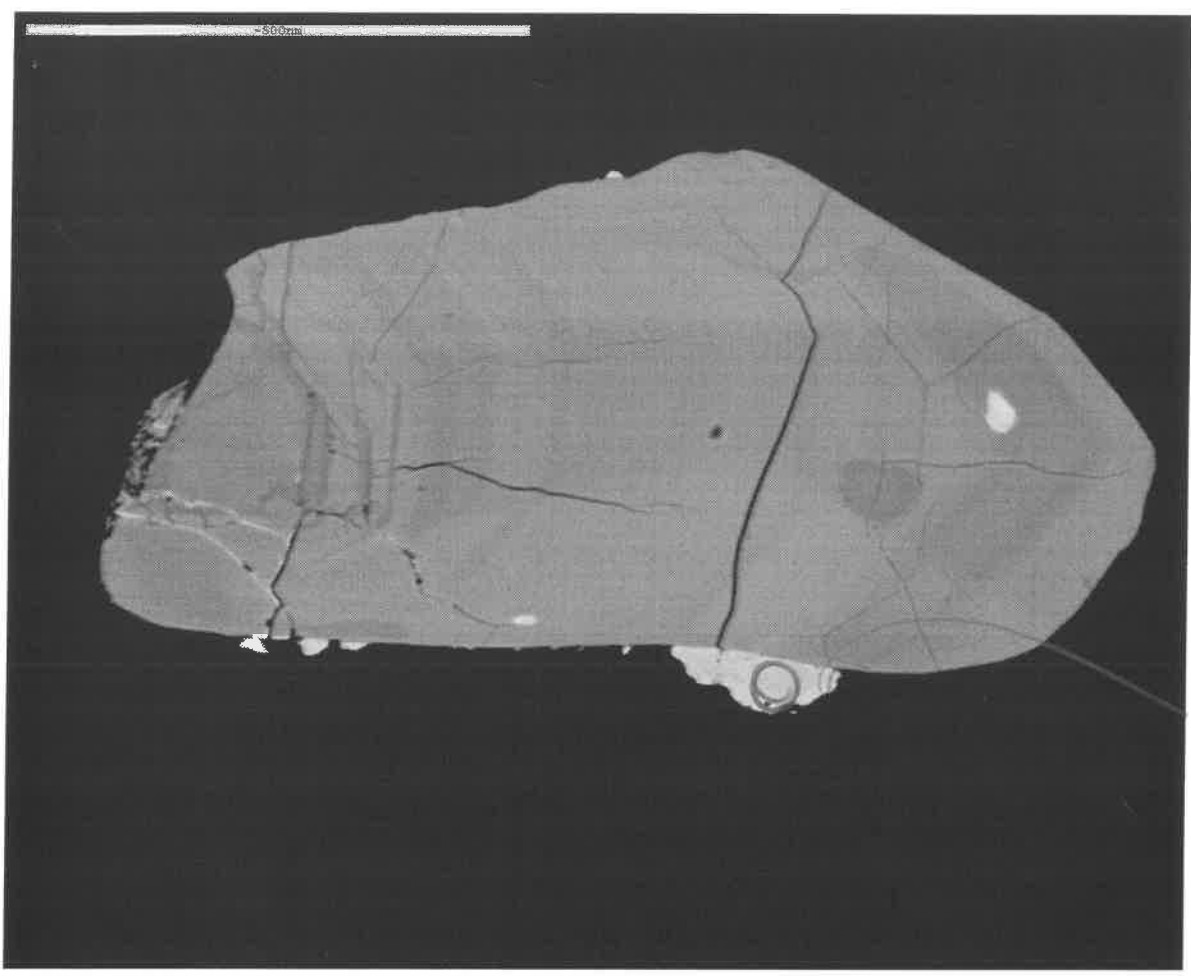
19-16
2326



12 new.
2455

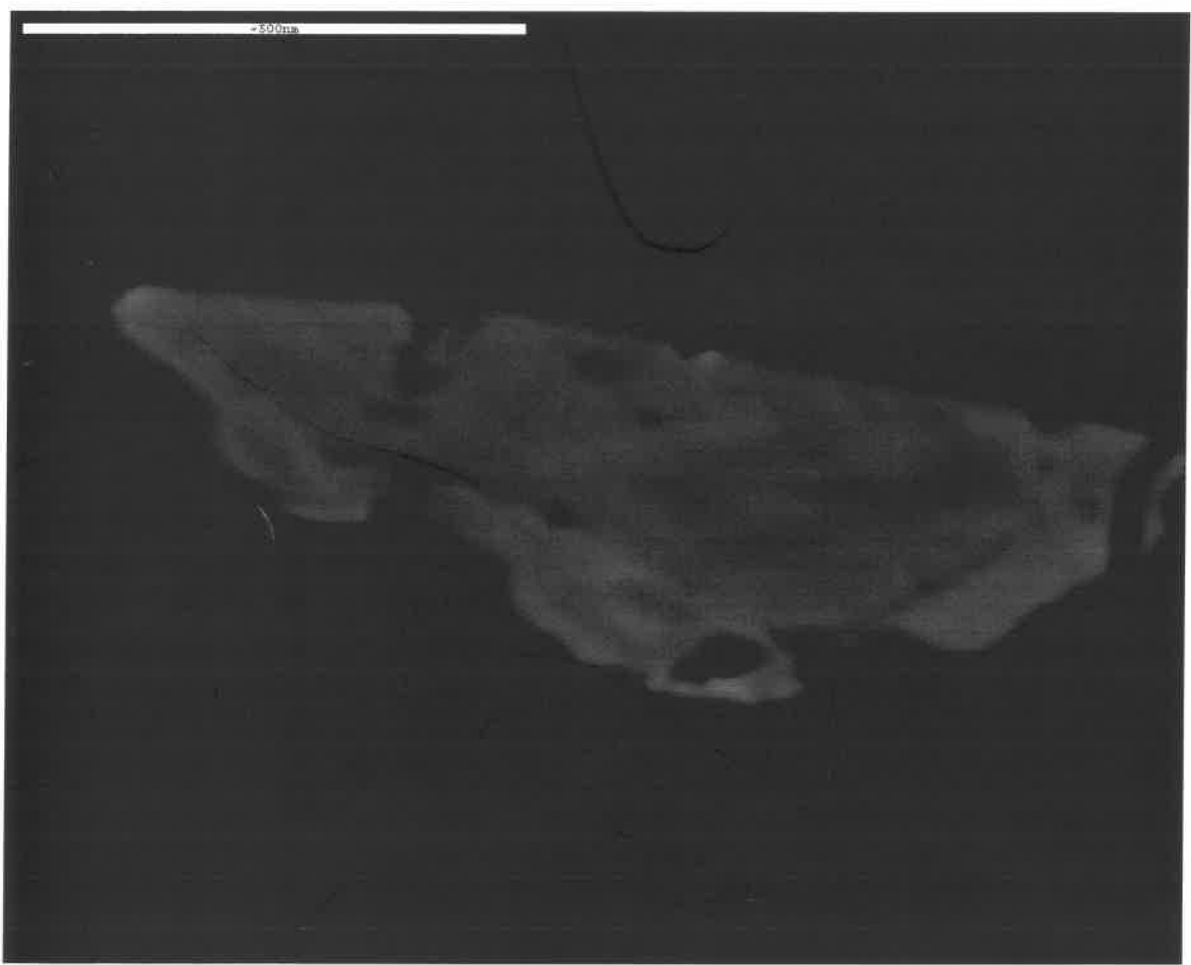
23

grain 11



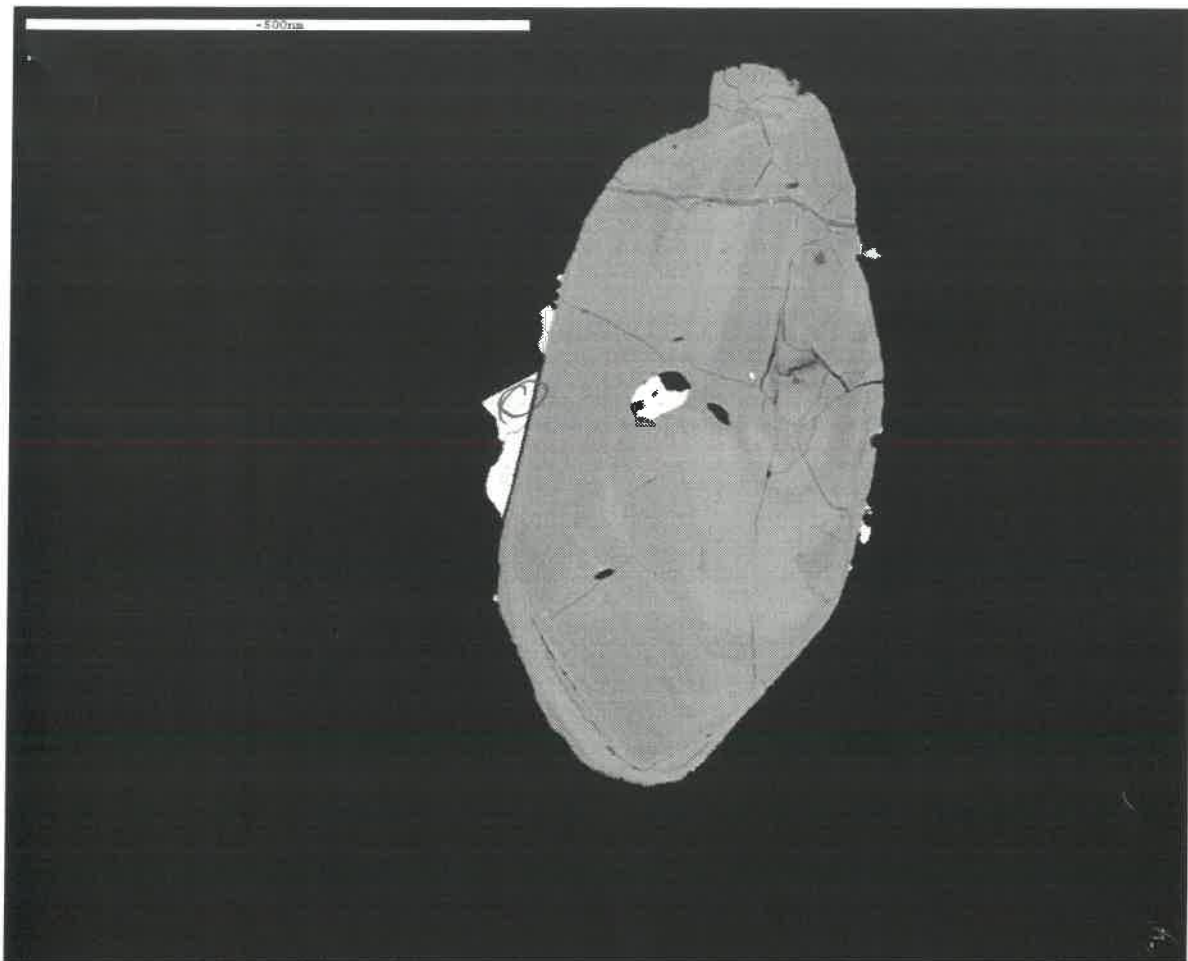
11-11
2713

24



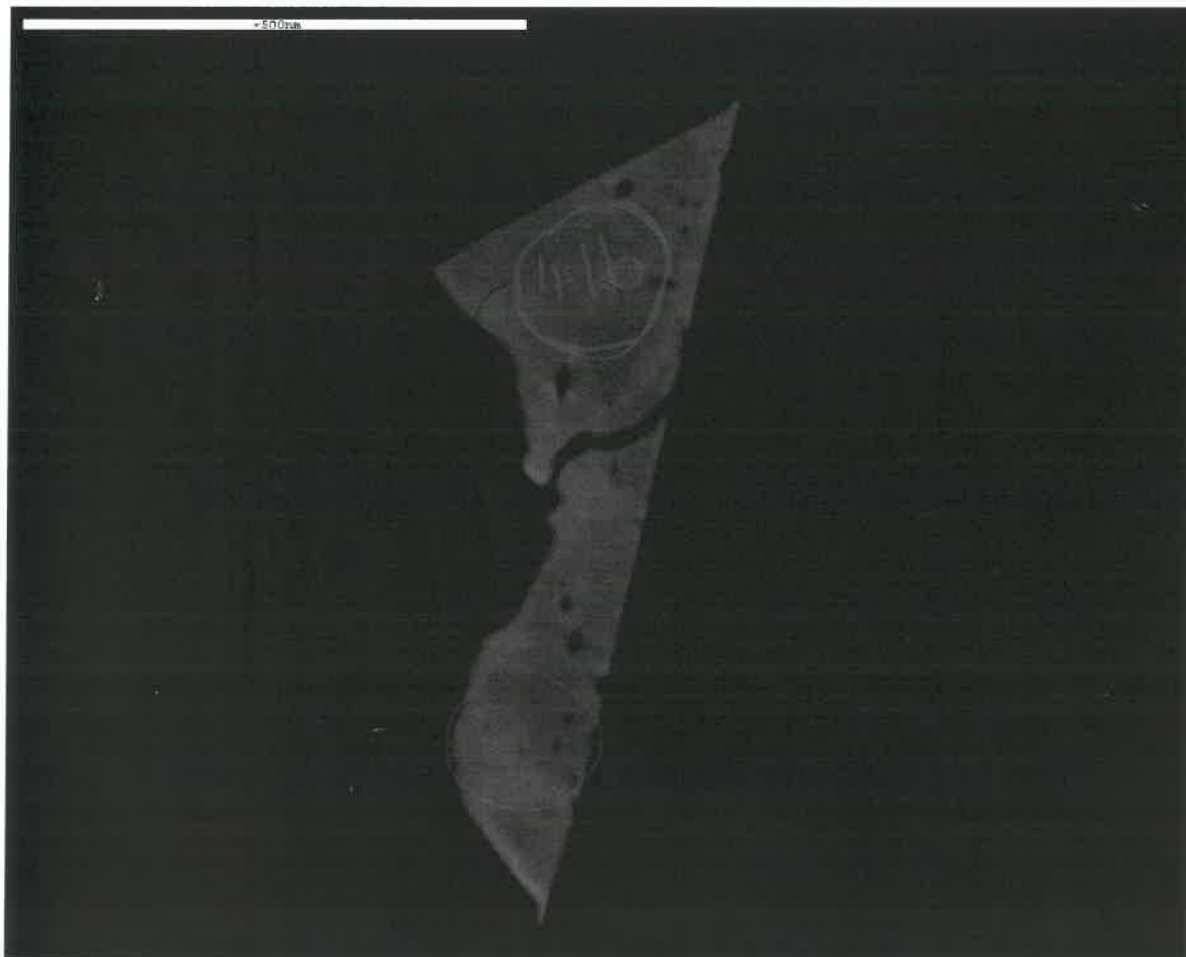
span 4

25



met.
2743

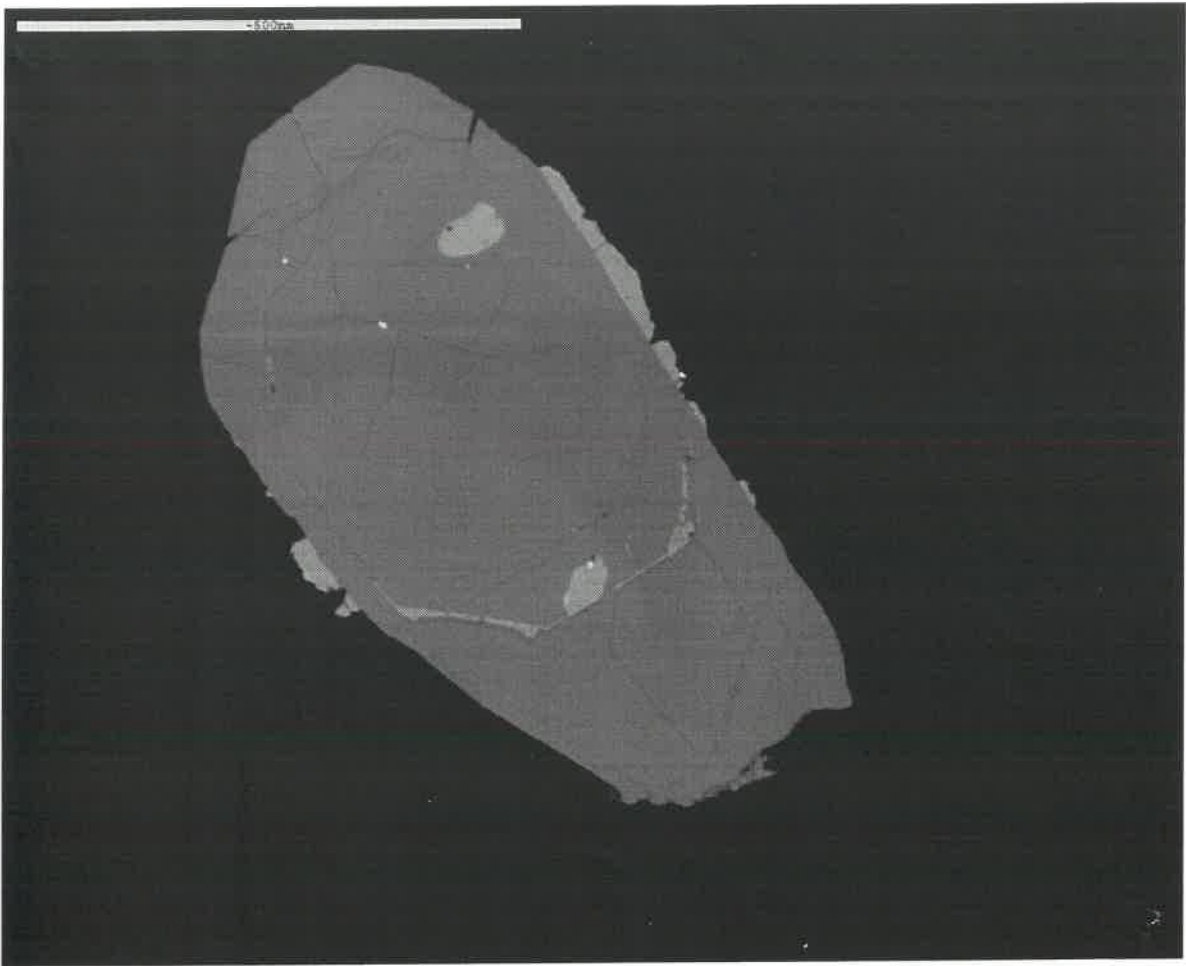
27



A4.1b, A4.2

new

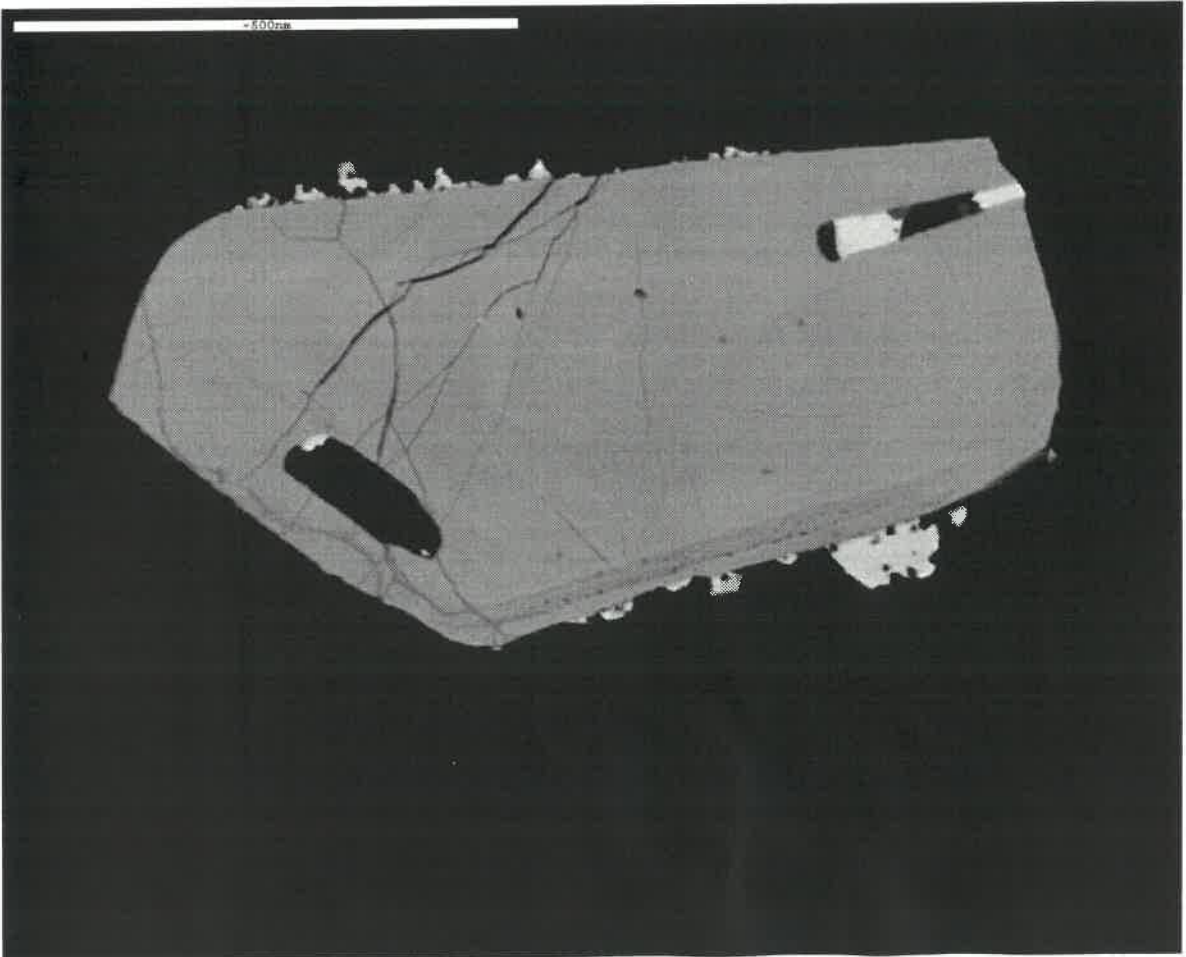
grain
37



28

X

grain
39

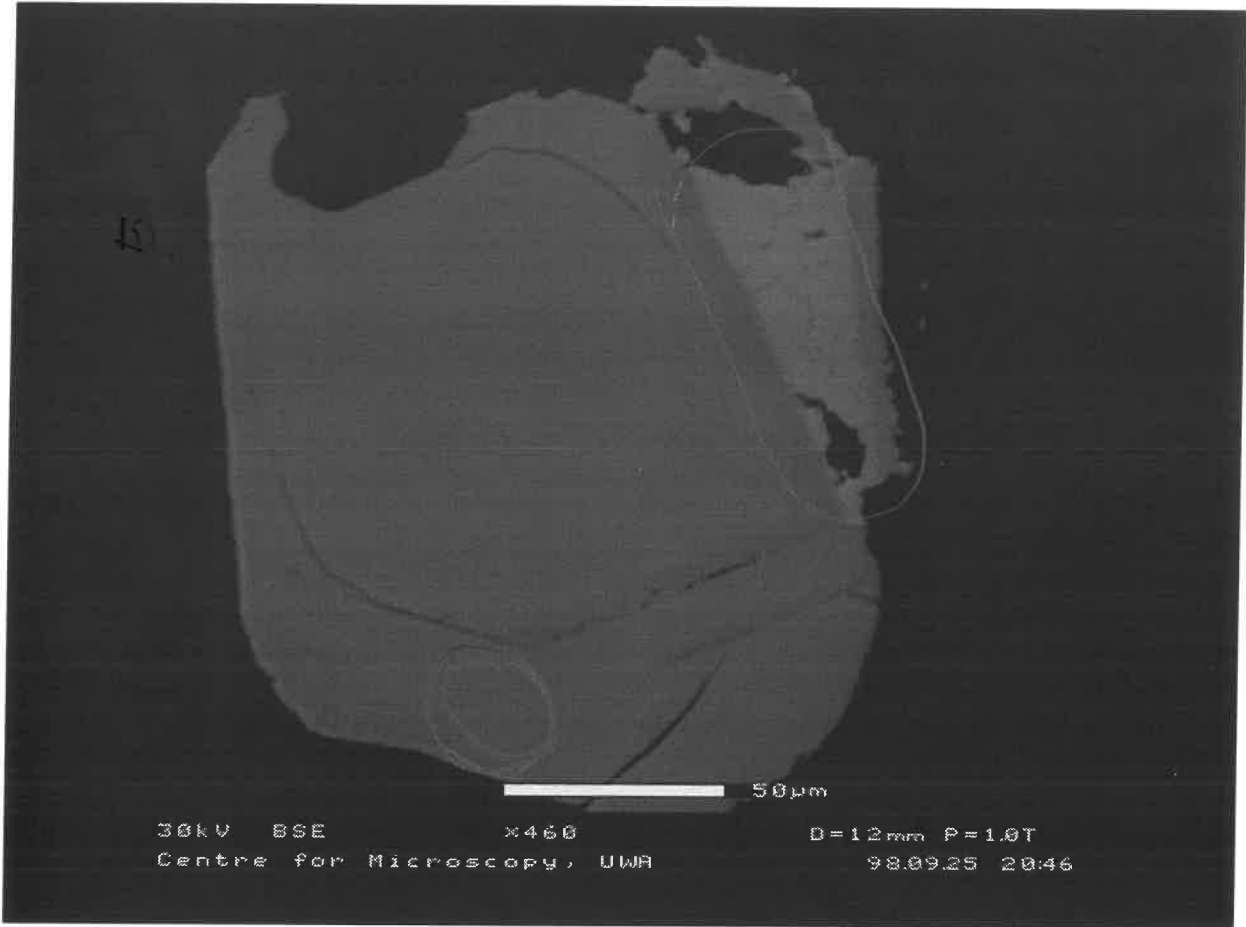


29

new

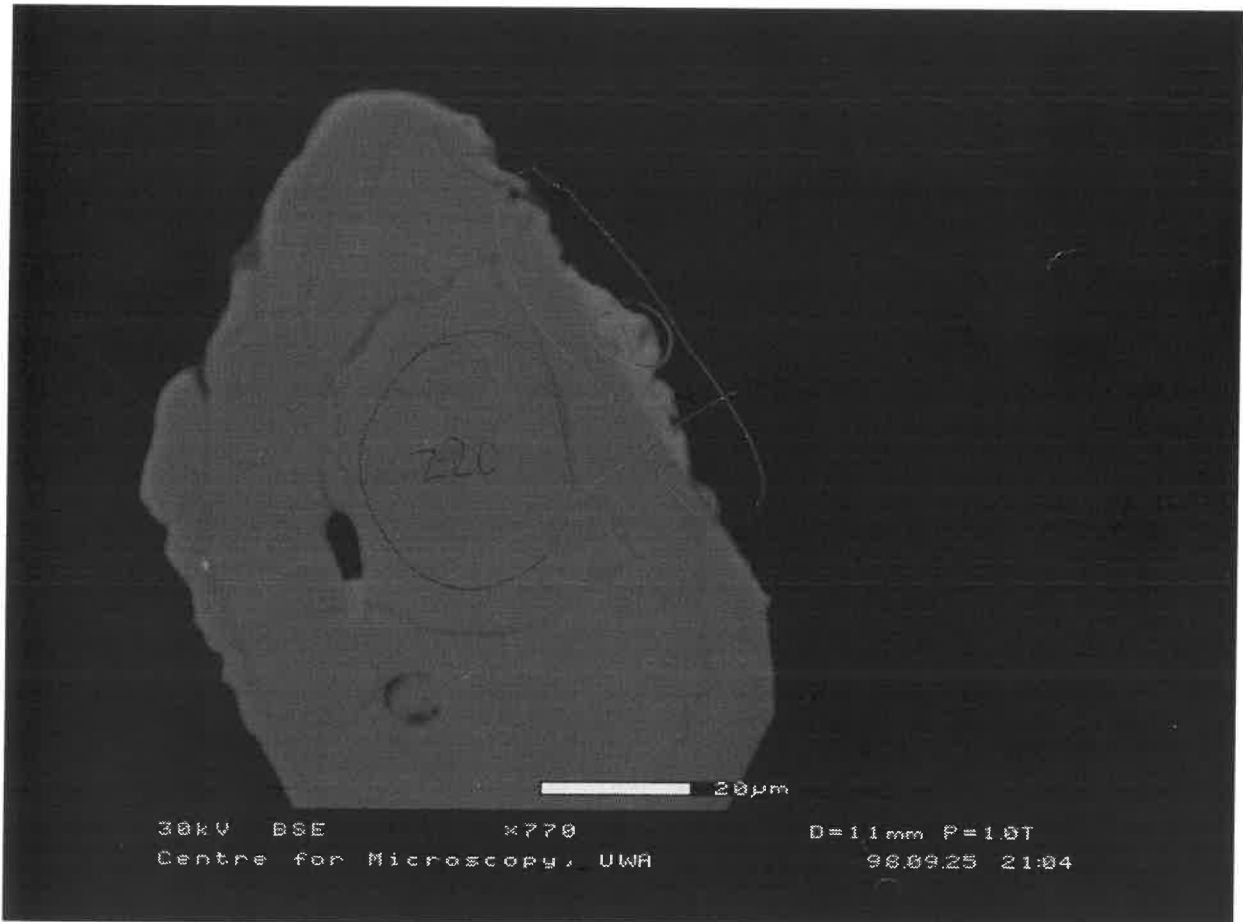
X

59



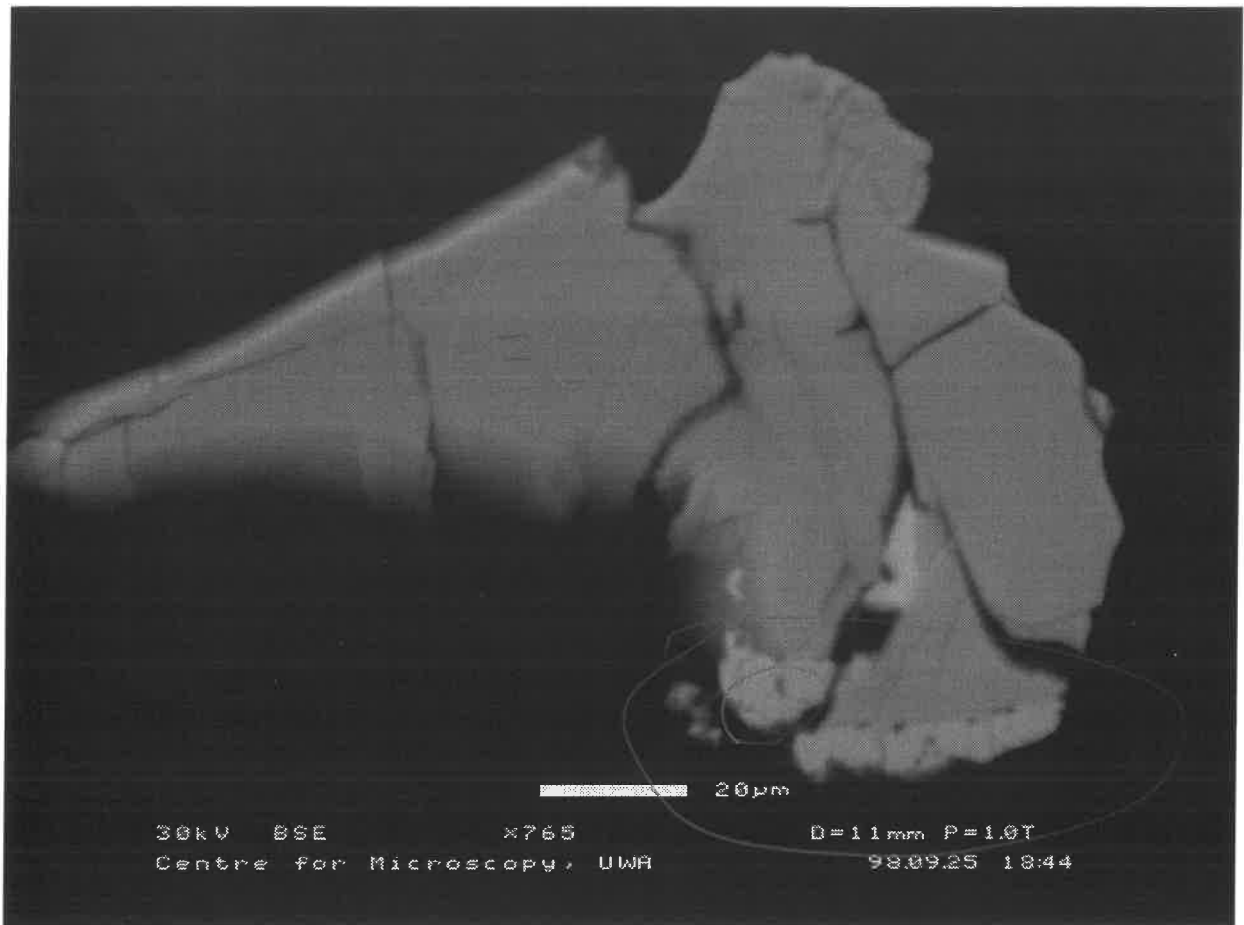
19 MBS1 [19.1

60



20 ~~MBS1~~ 20.1

46

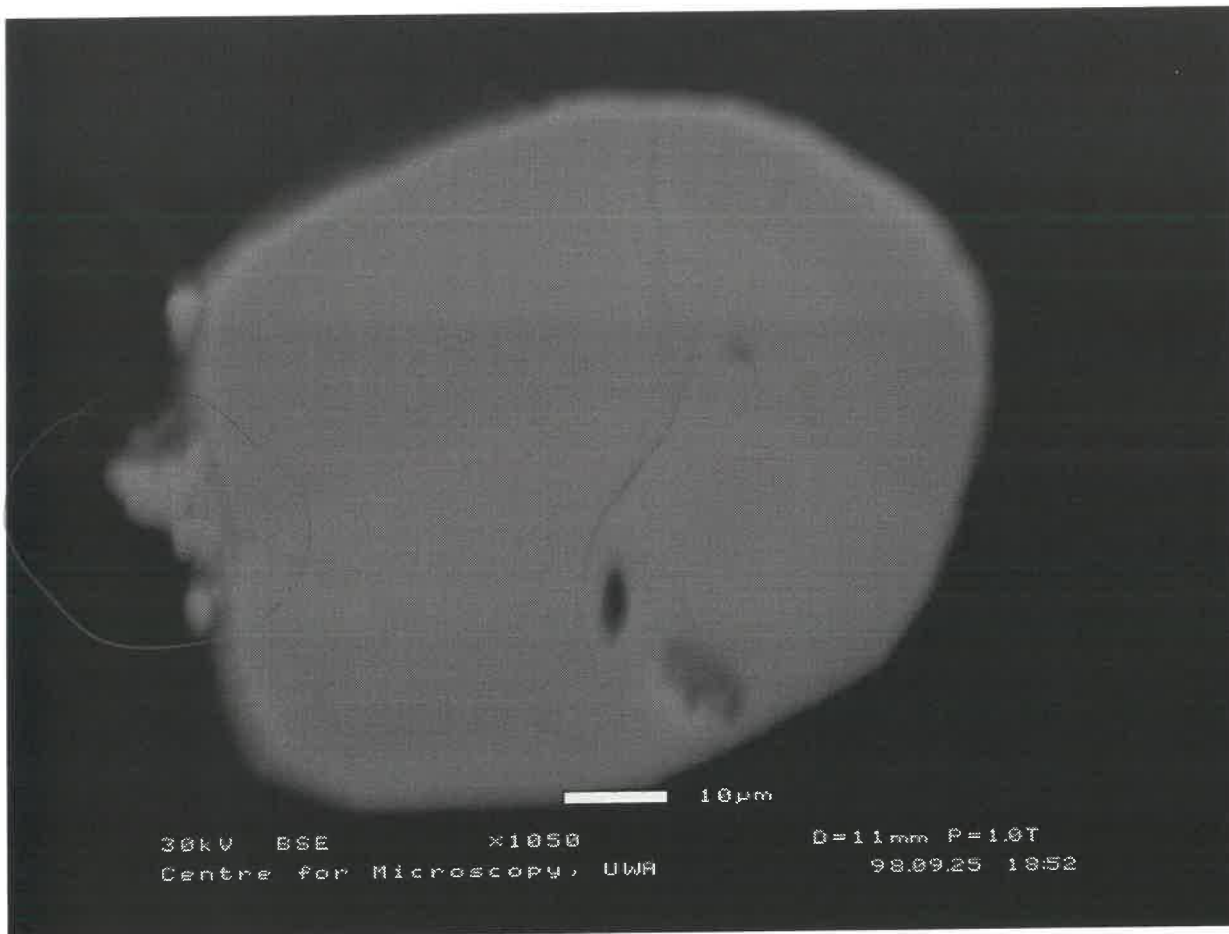


⑥

mBS.1

1-9

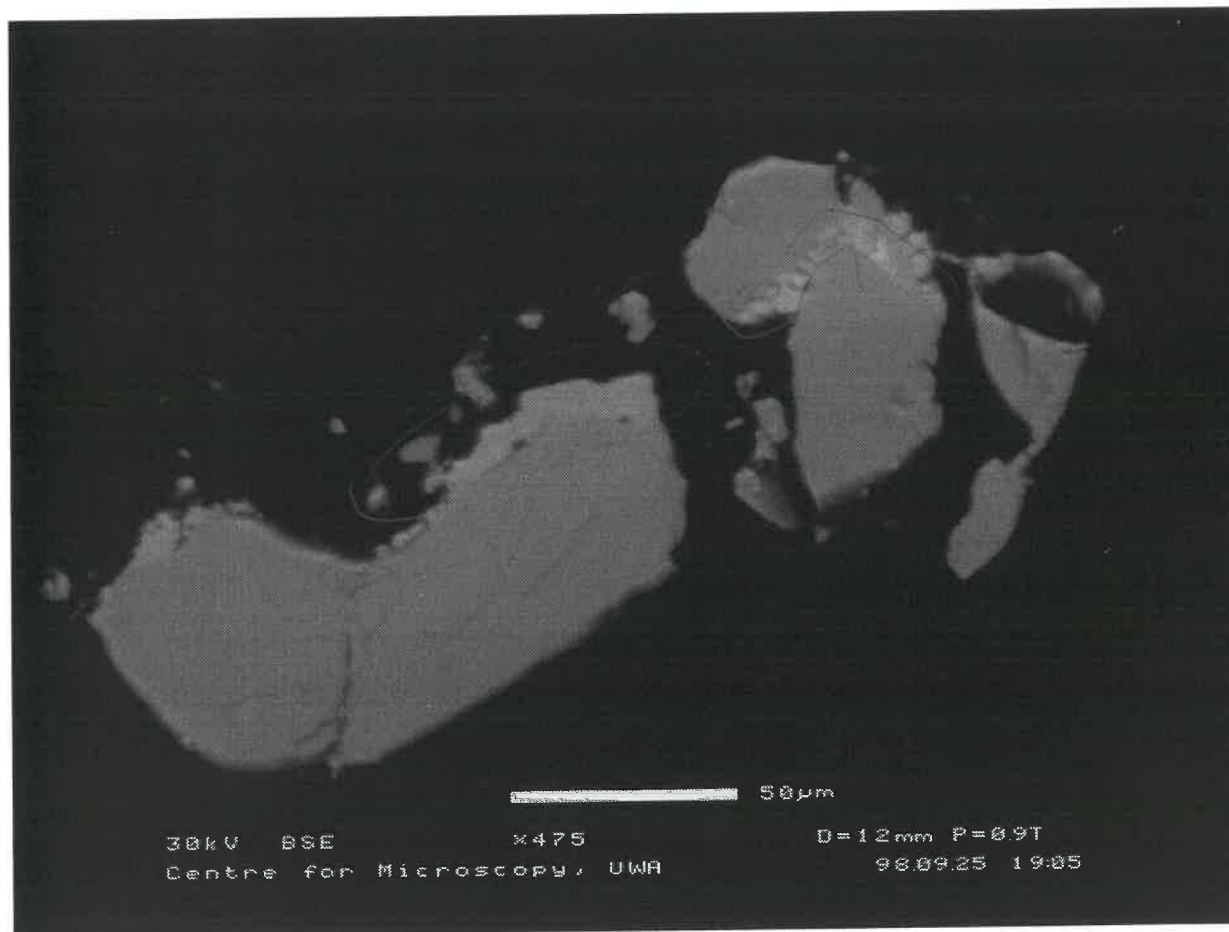
47A



x

⑦ MBS.1

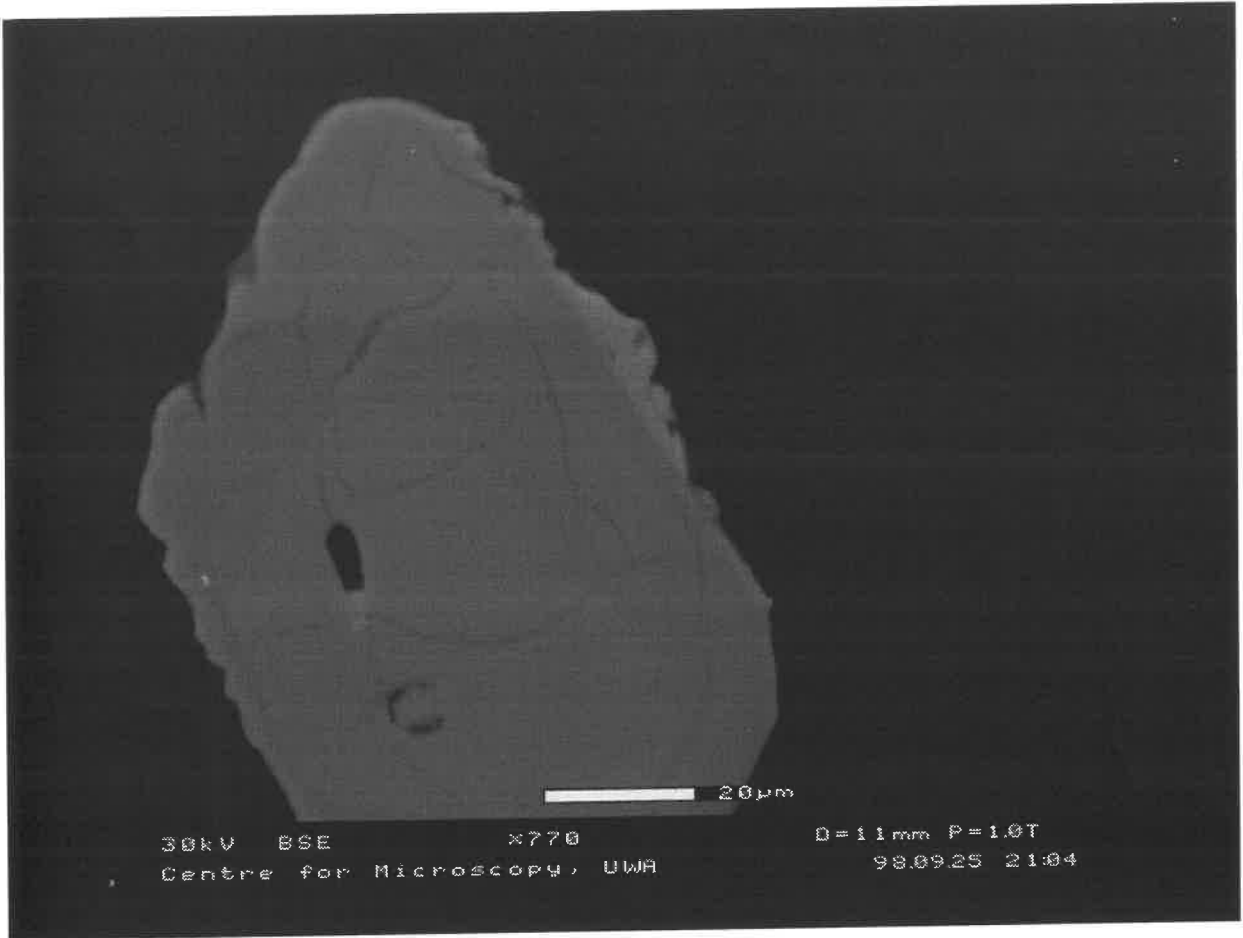
48



?

⑧ MBS.1

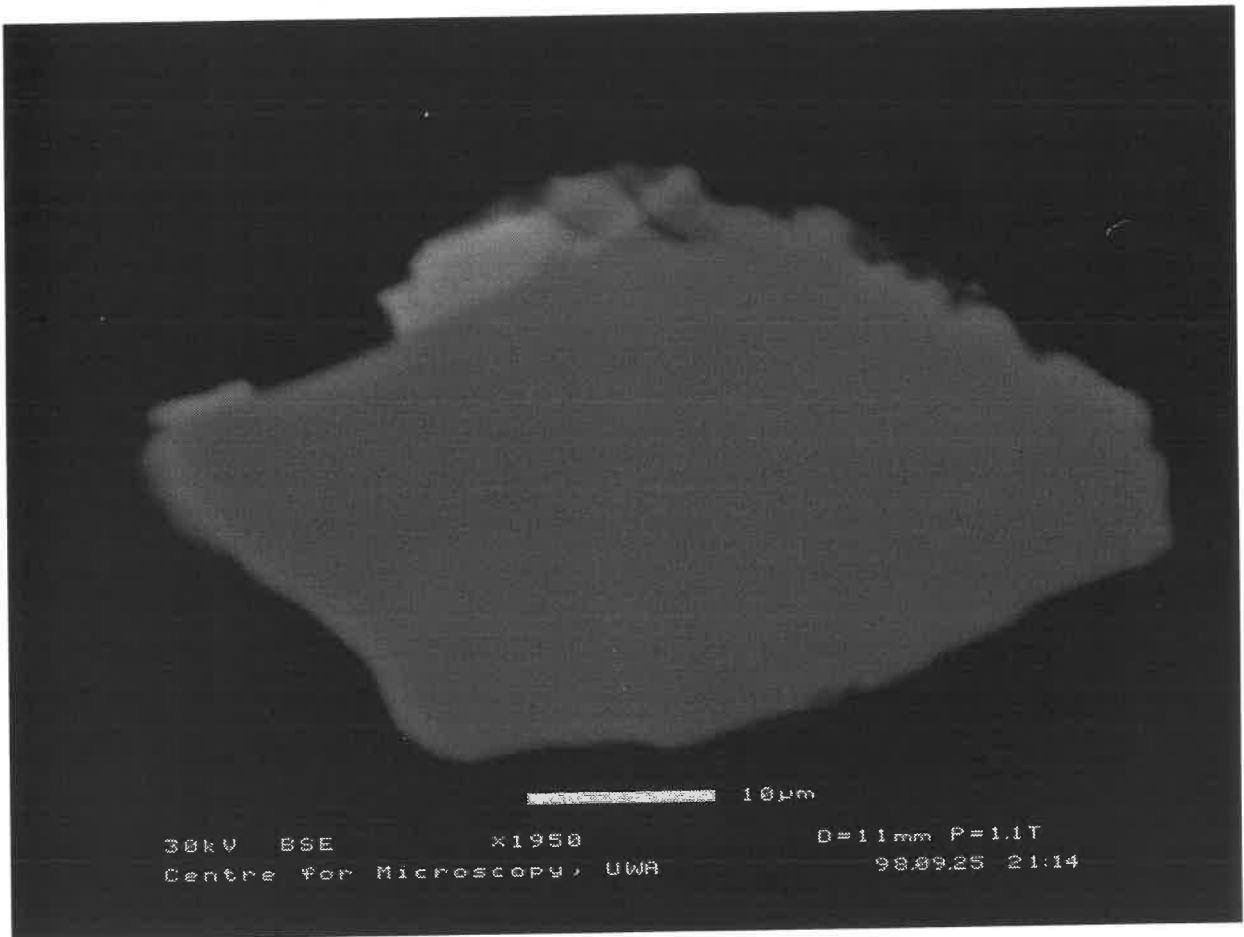
60



*Use
micro
-
presence
to find
Steyn.*

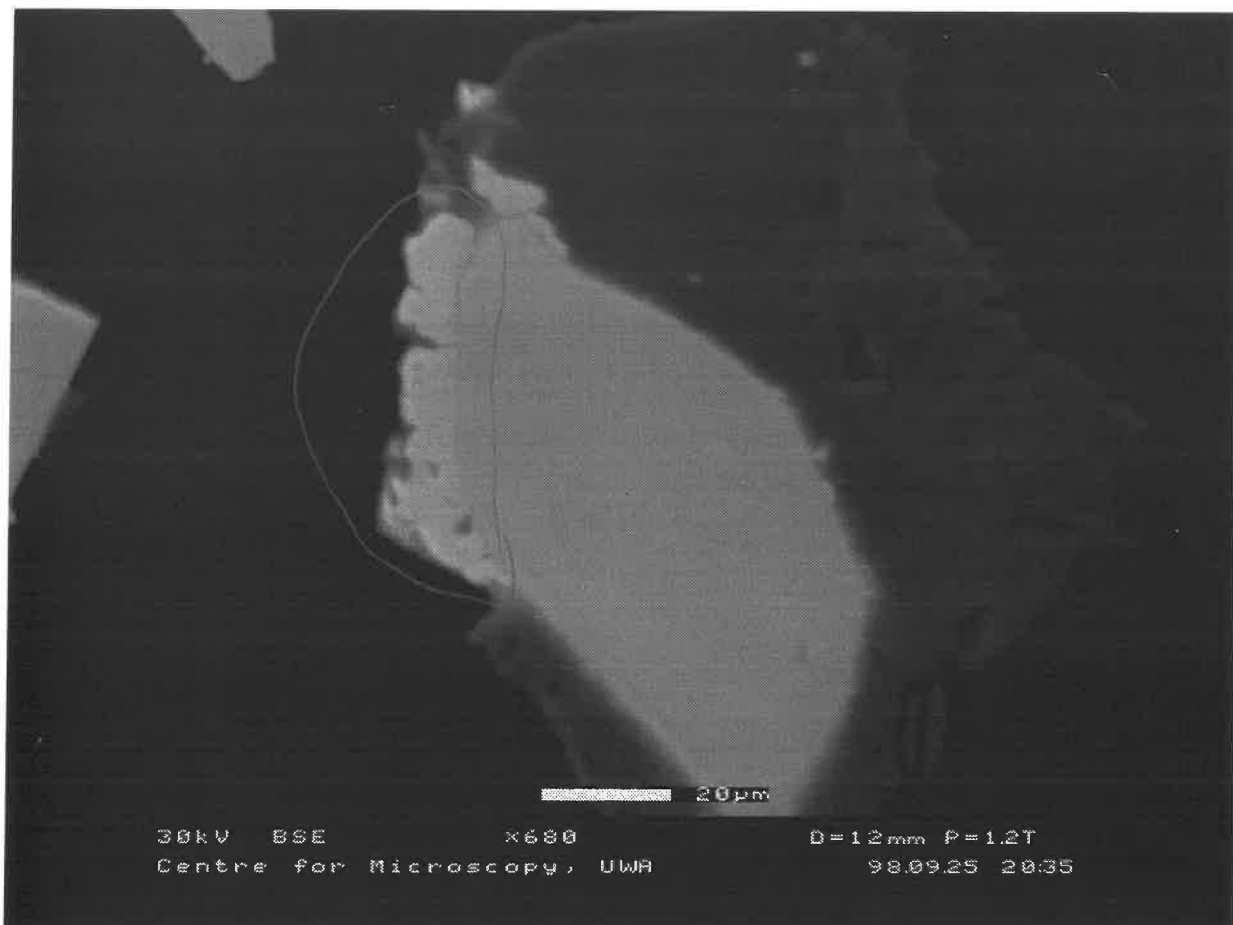
20 Steyn S.S

61



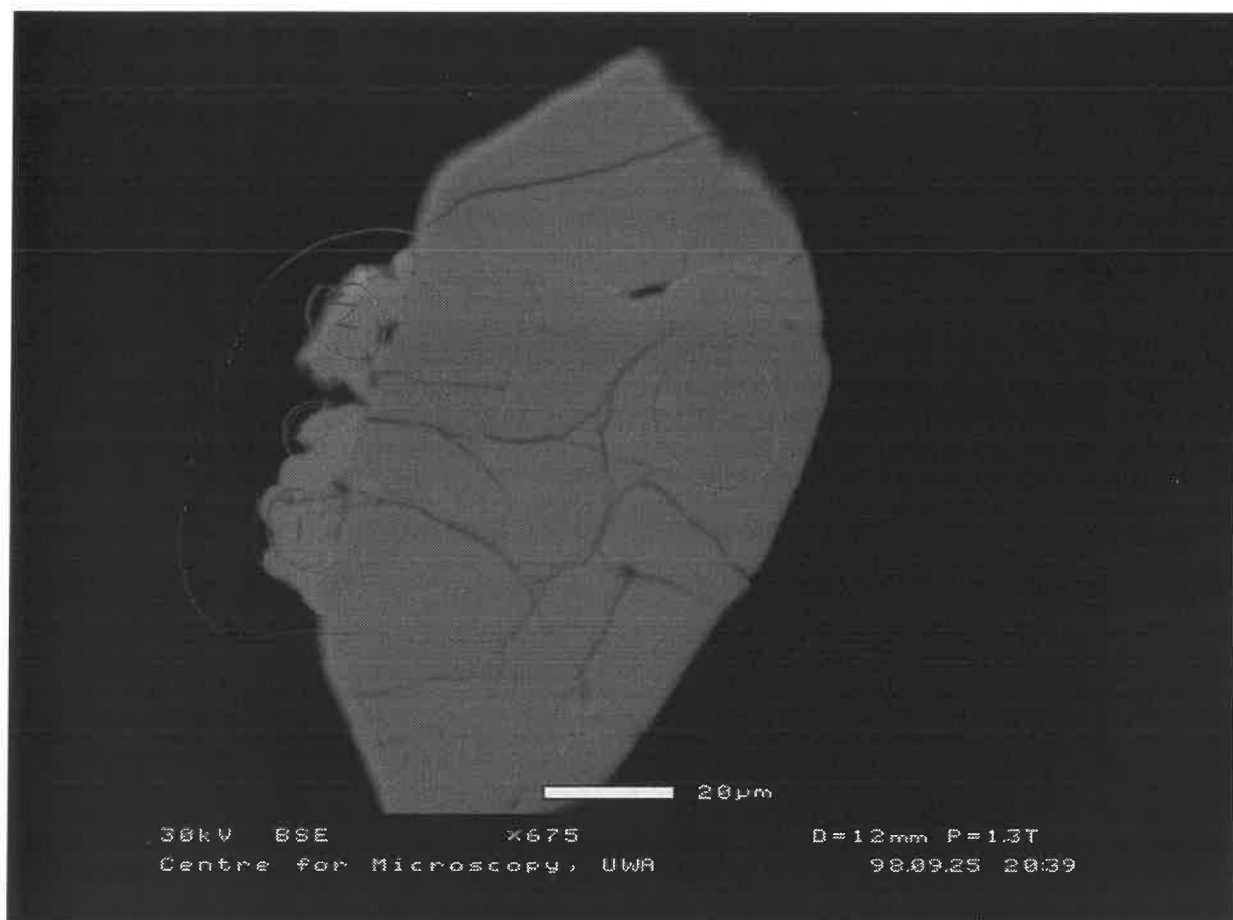
21 Steyn's.S

57



①7 MBS.1

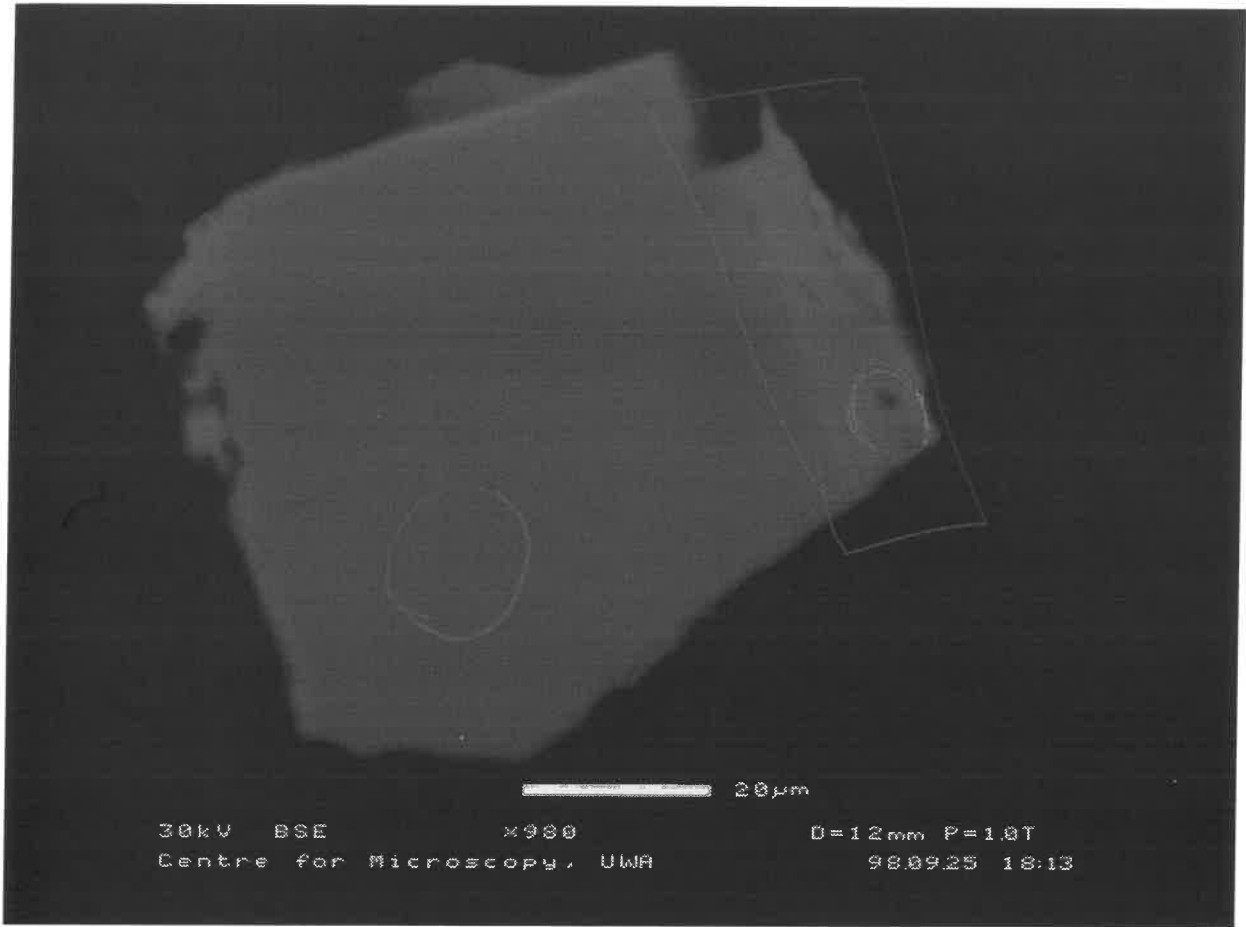
58



①8 MBS.1 [18.1, 18.2]

43

3-1



③

MBS.1

44

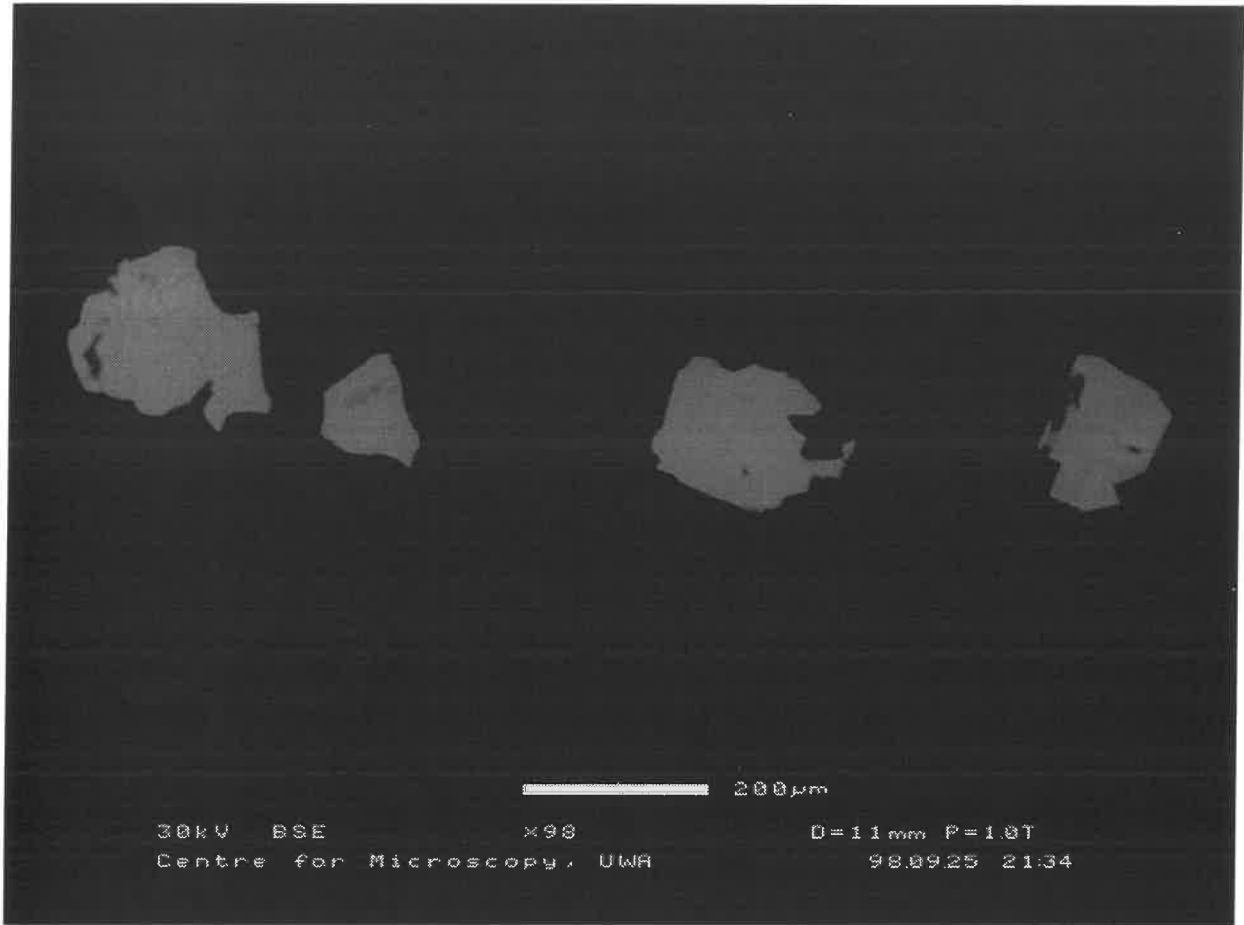


⑤

MBS.1

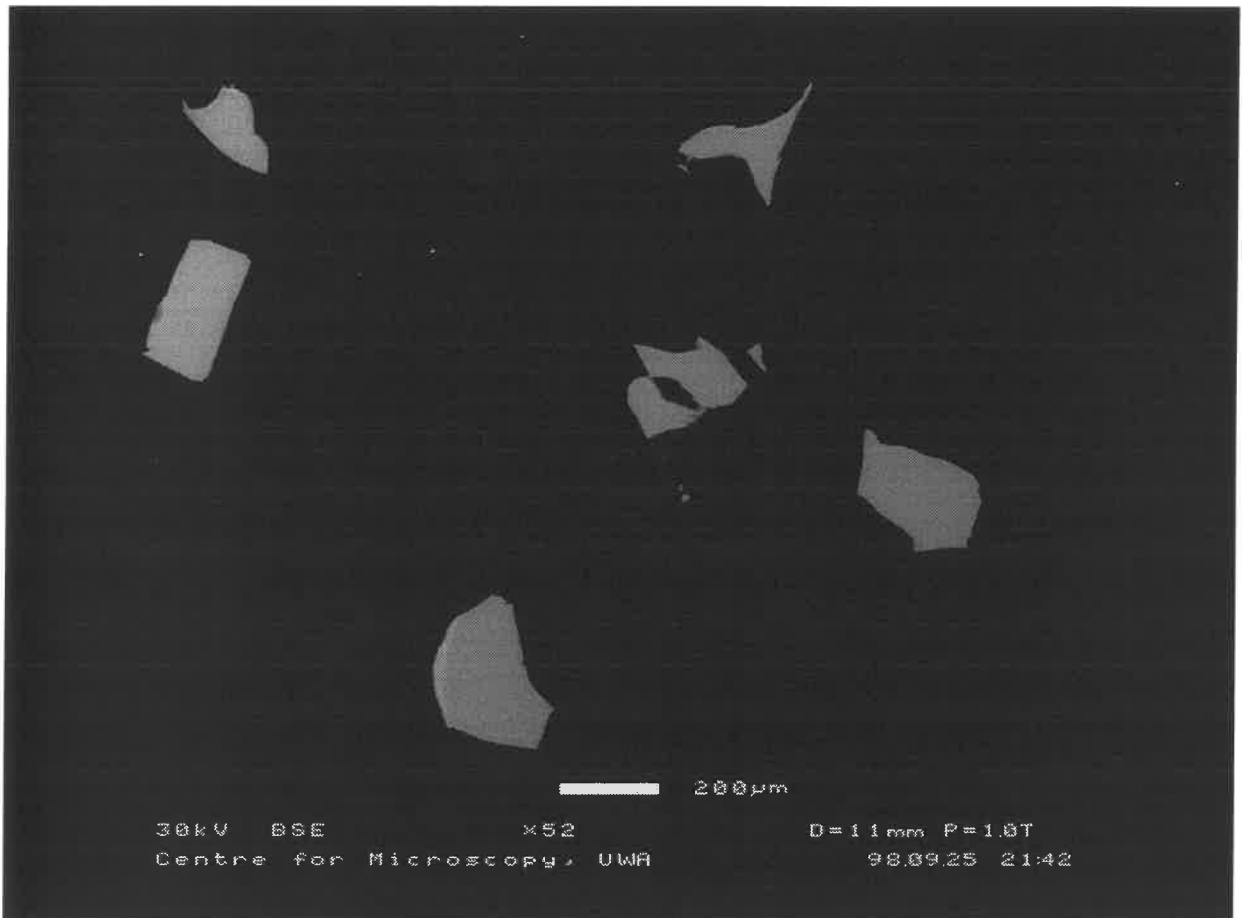
1-7

62



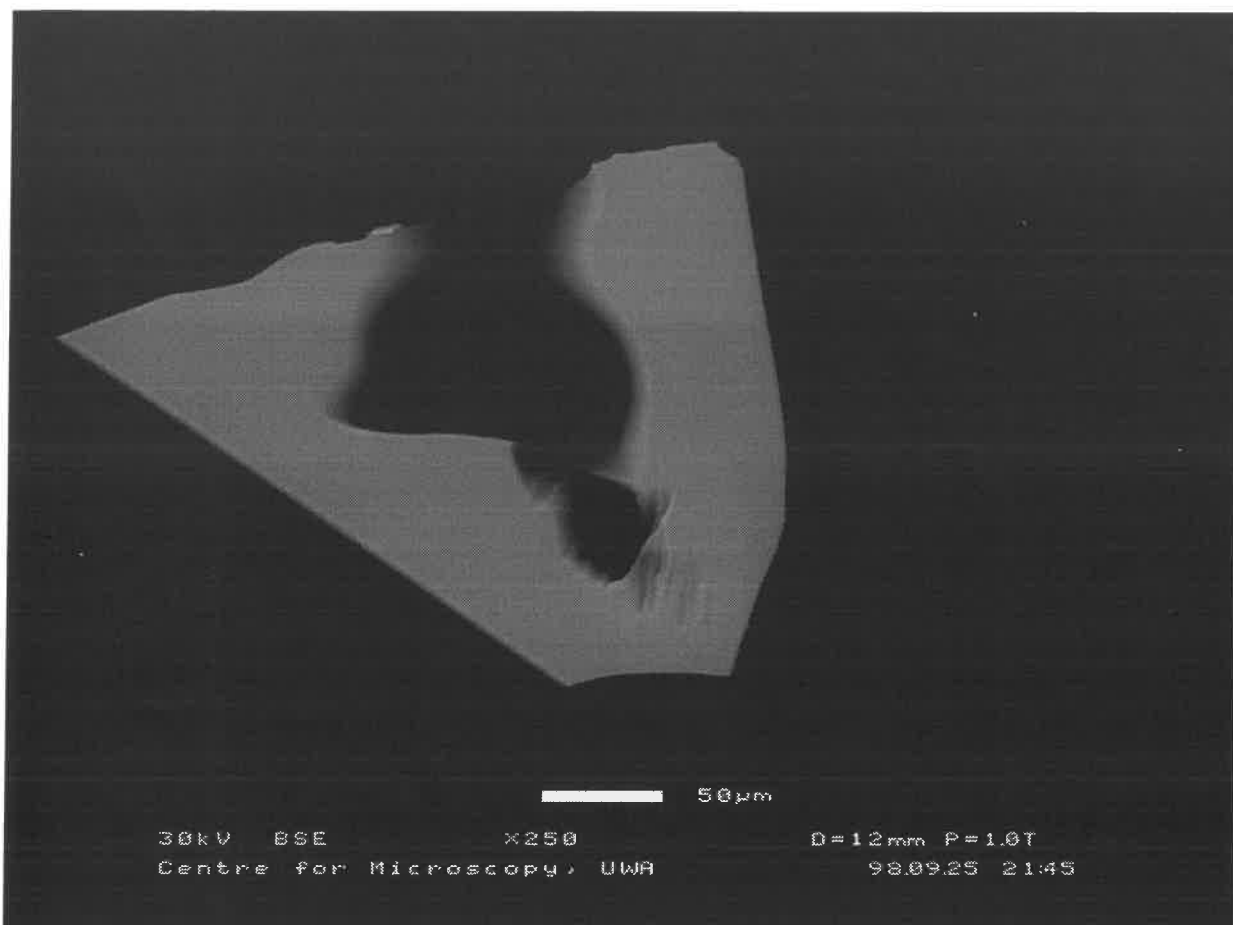
Standardo D23

683



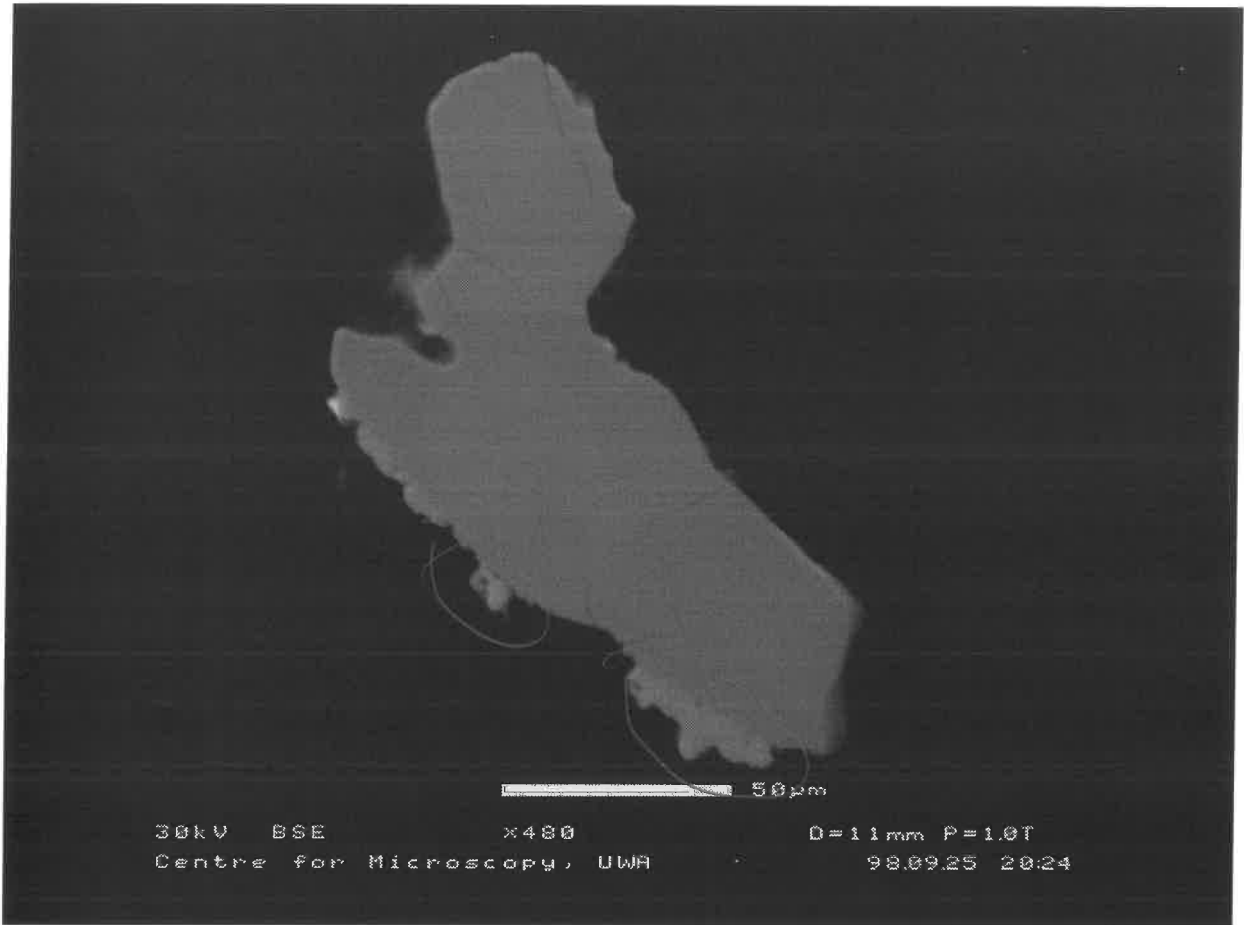
C23

64



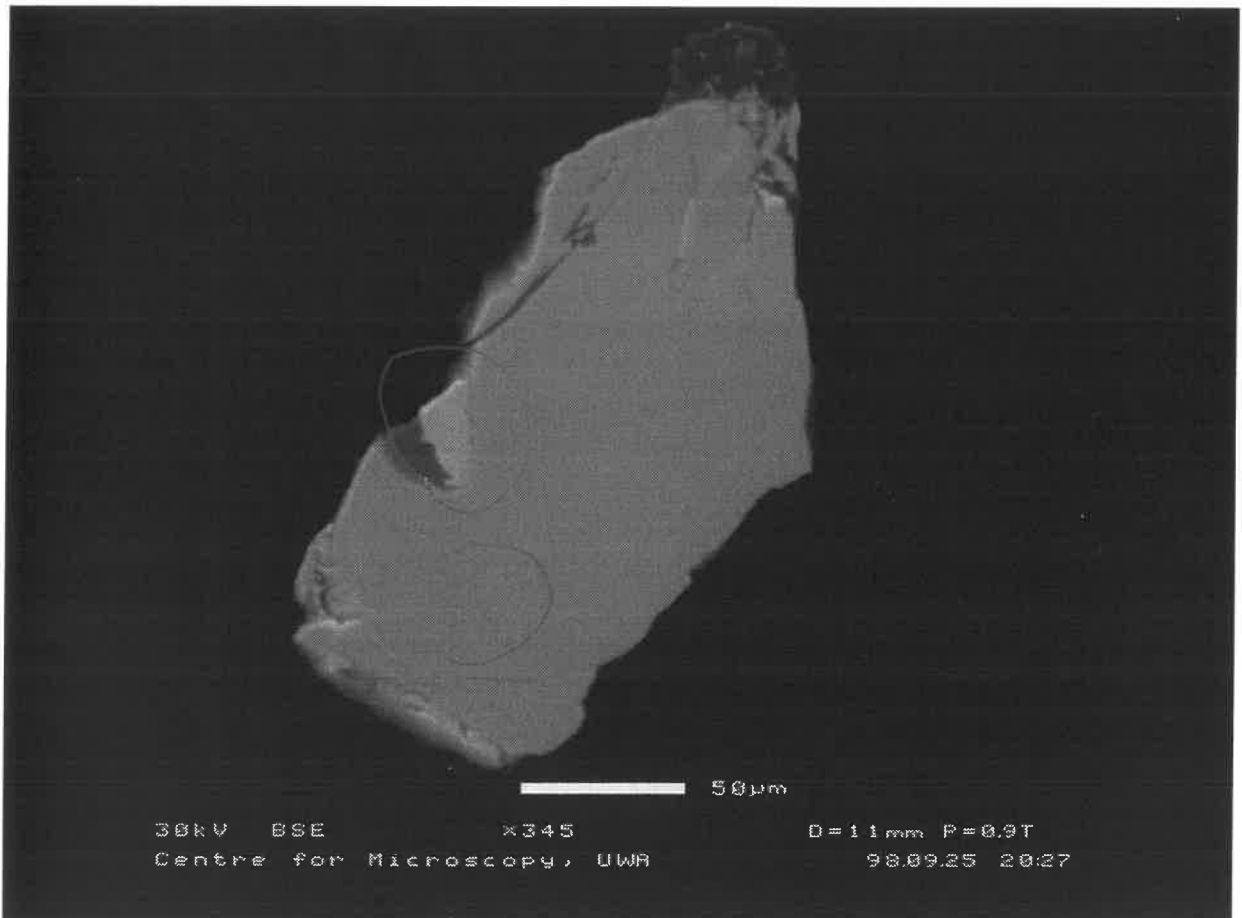
CZ3

58



18 MBS.1

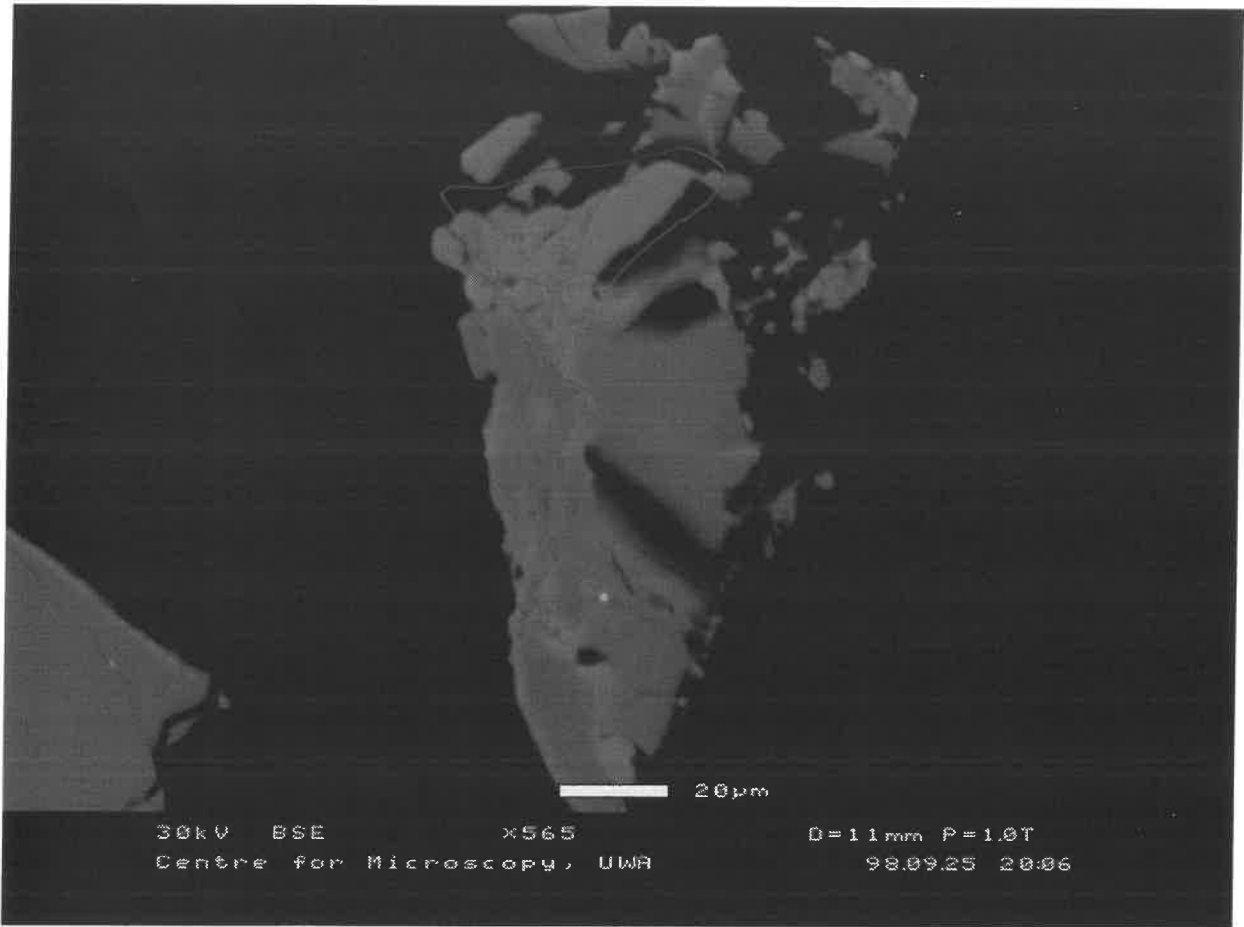
56



16 MBS.1

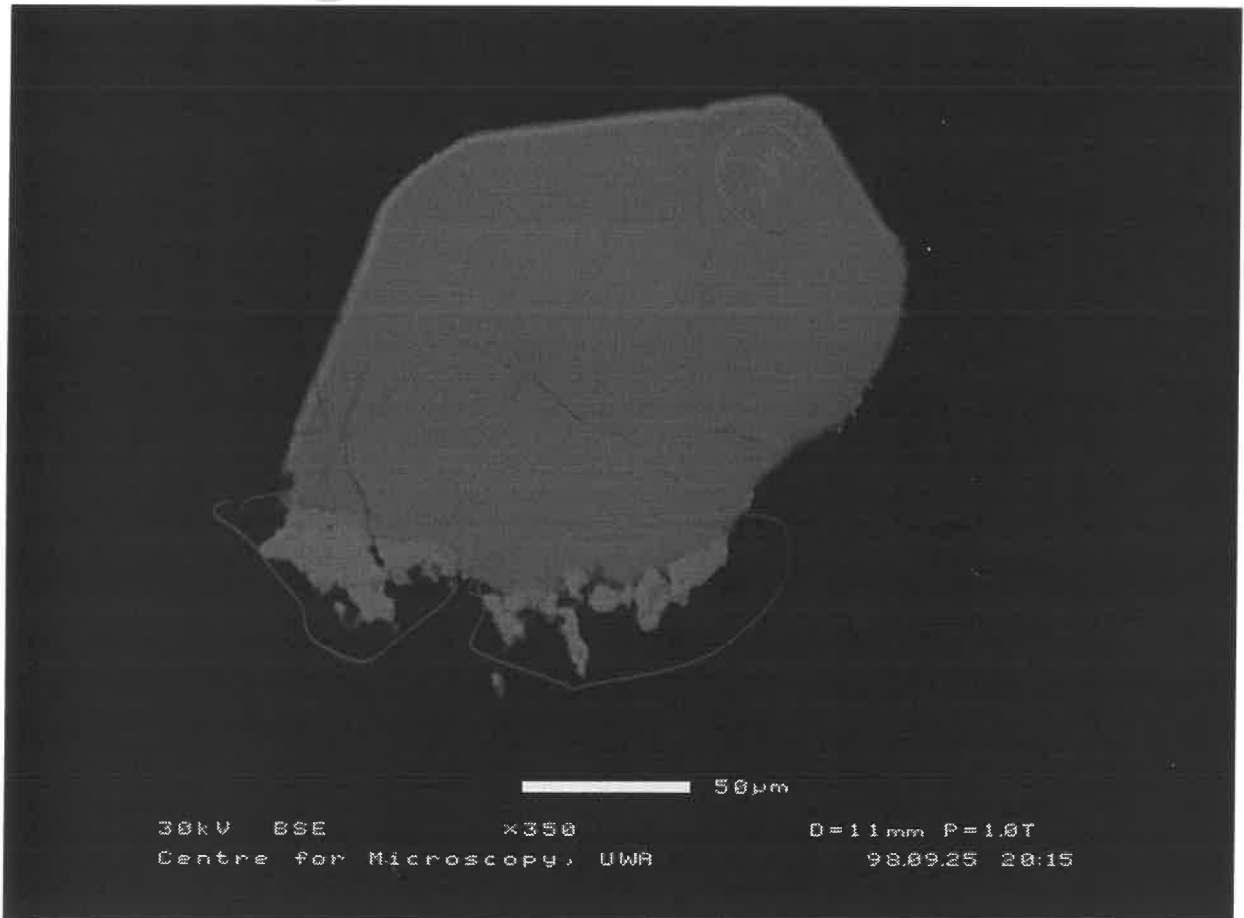
X

53



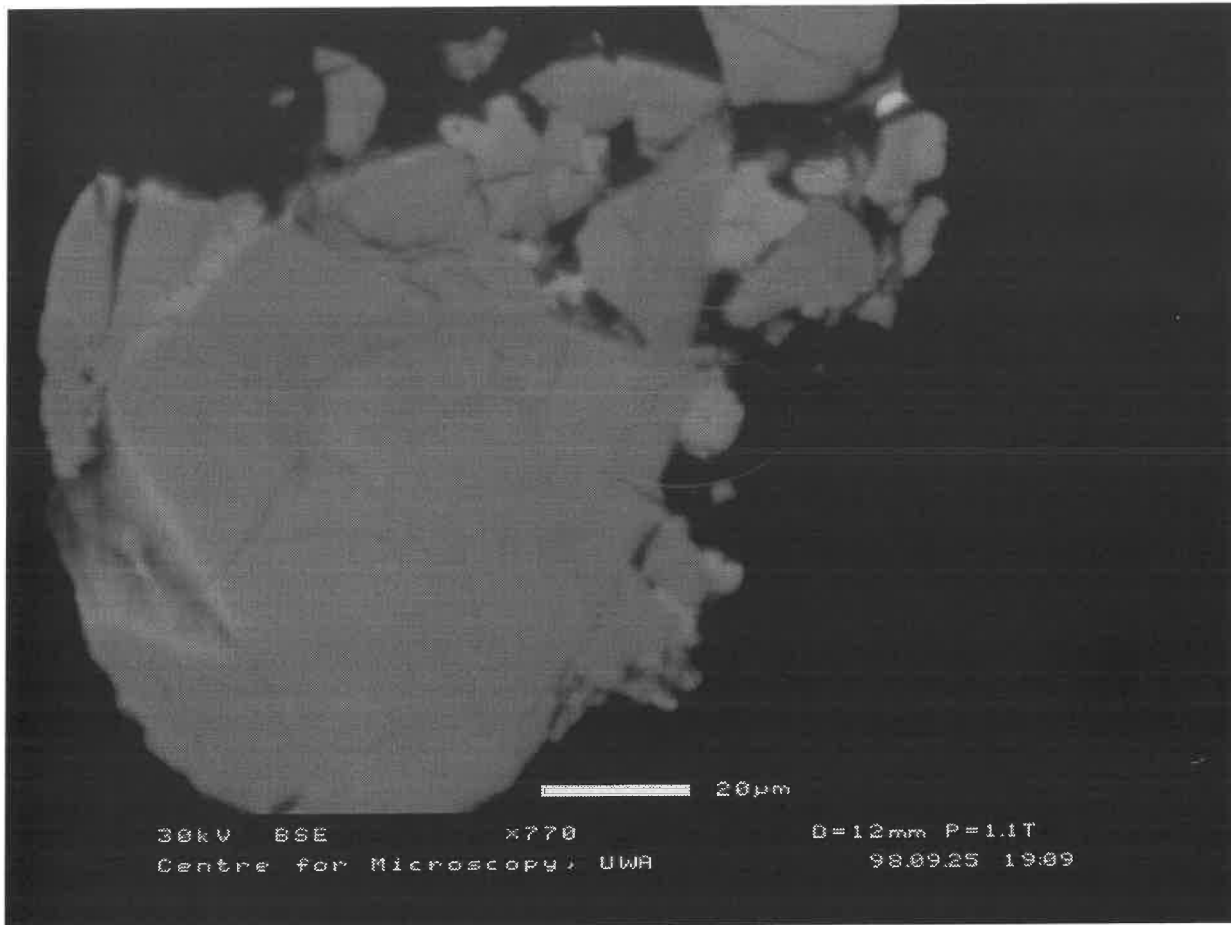
13 MBS.1

54



14 MBS.1

49



?

9

mBS-1

50



↓

10

mBS-1

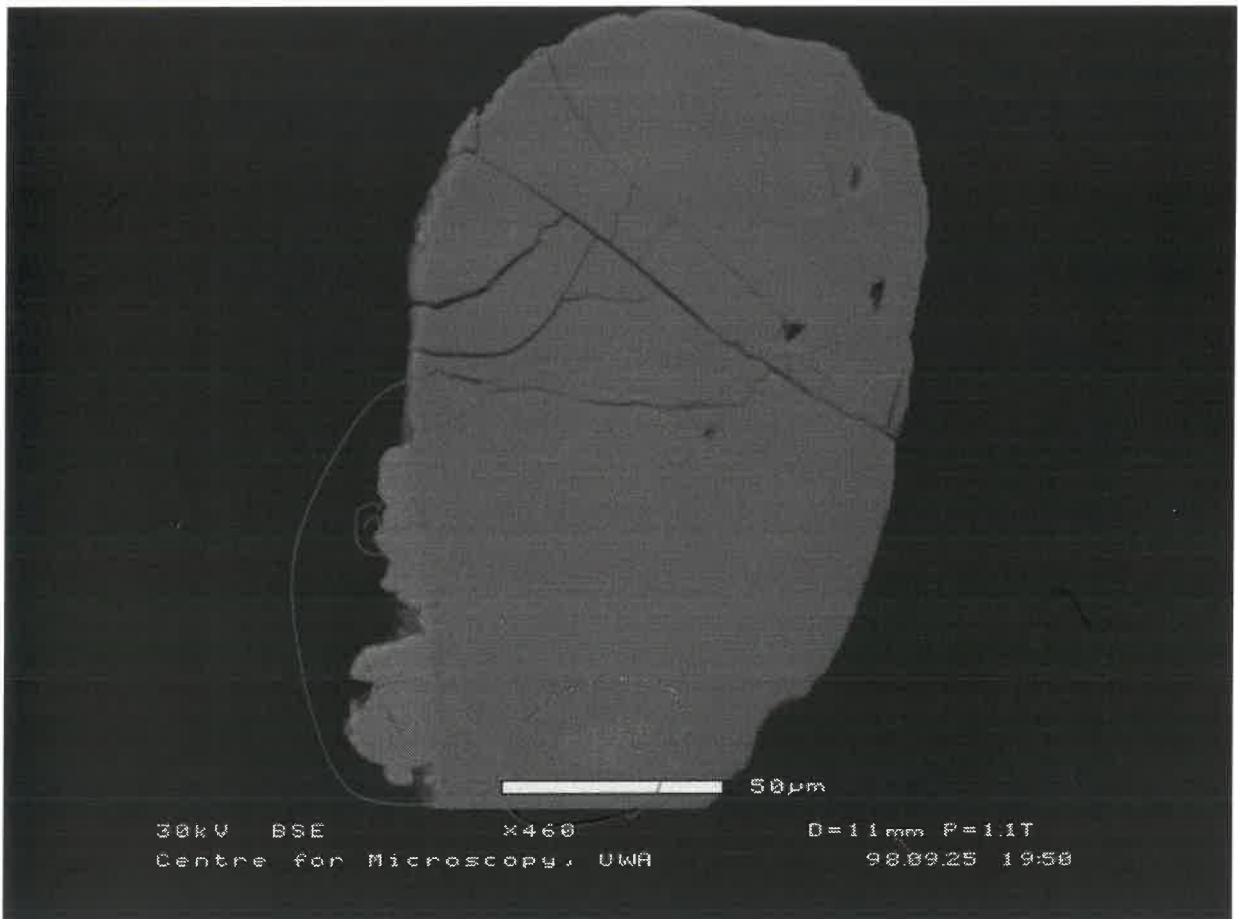
10.1

S3



⑪ MBS.1 [11.1]

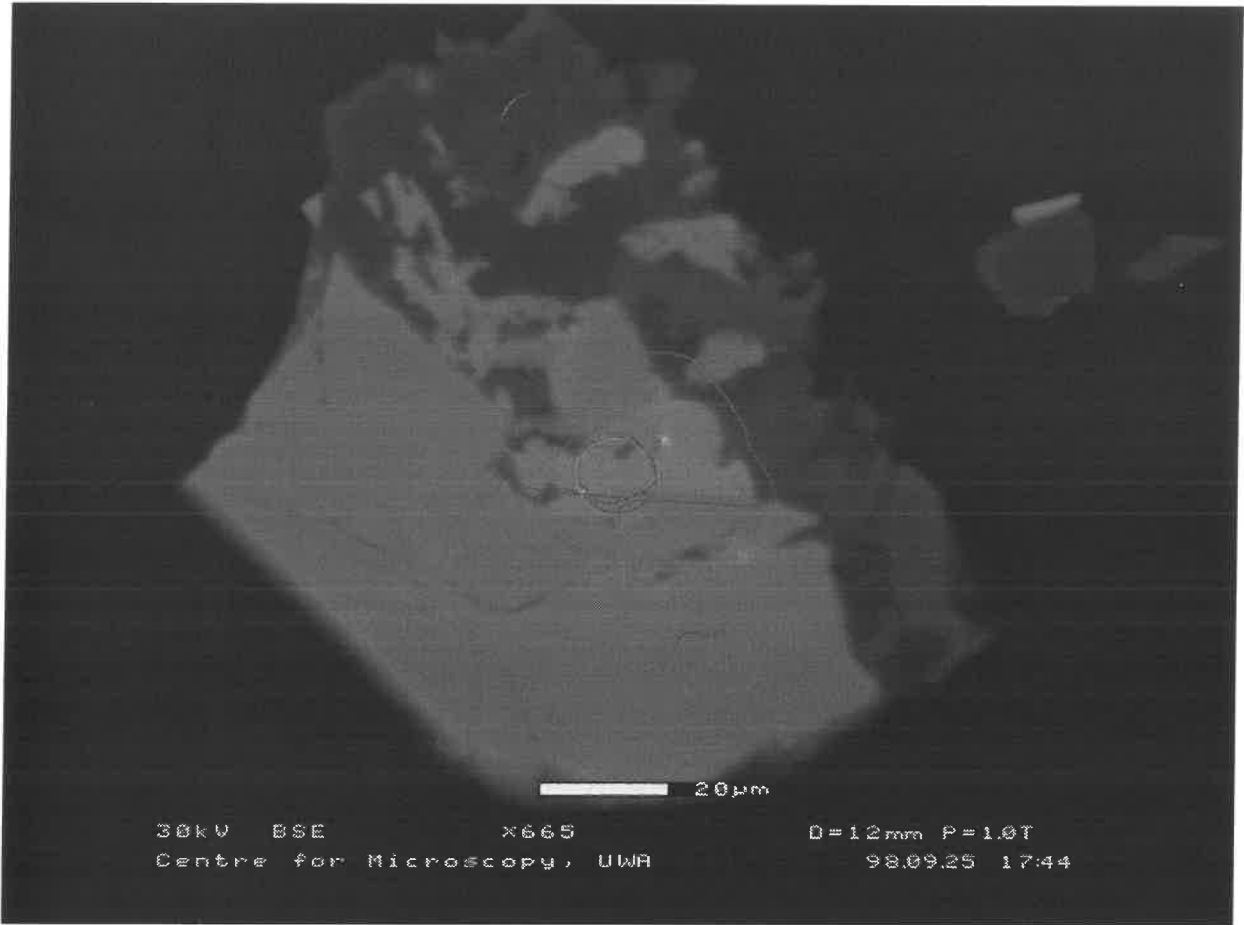
S4



⑫ MBS.1 12.1, 12.2

41

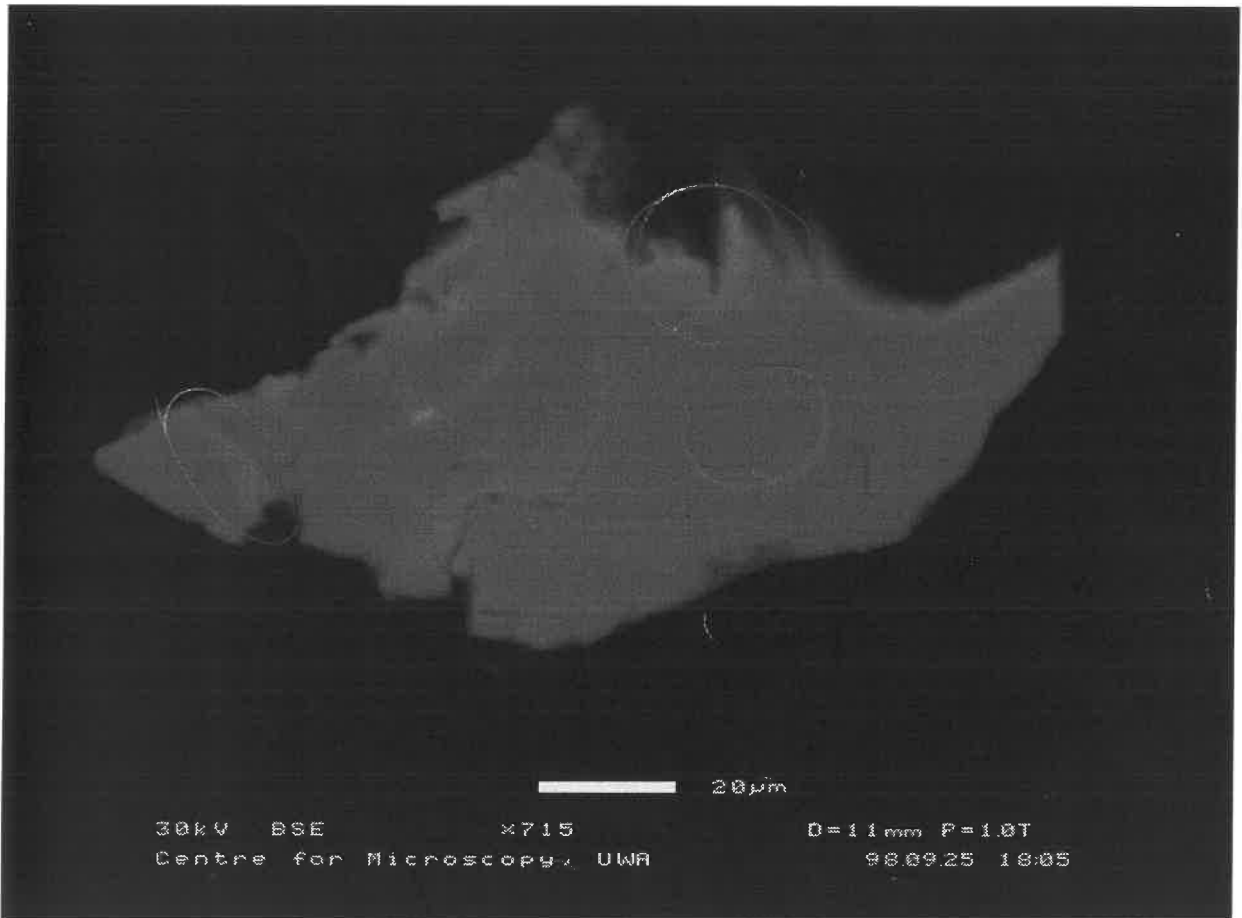
1-1



①

MBS.1

42



1-2

②

MBS.1

