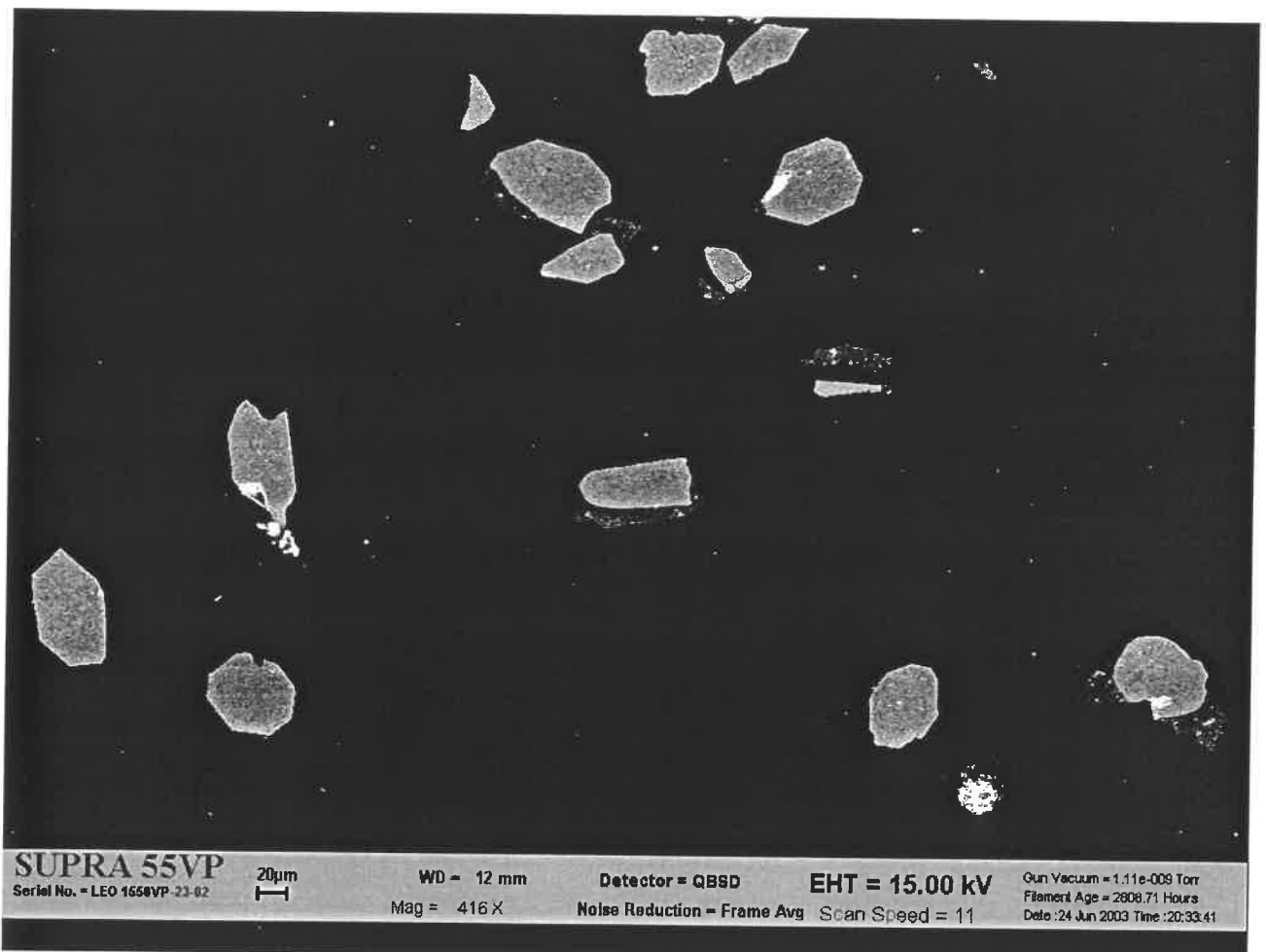
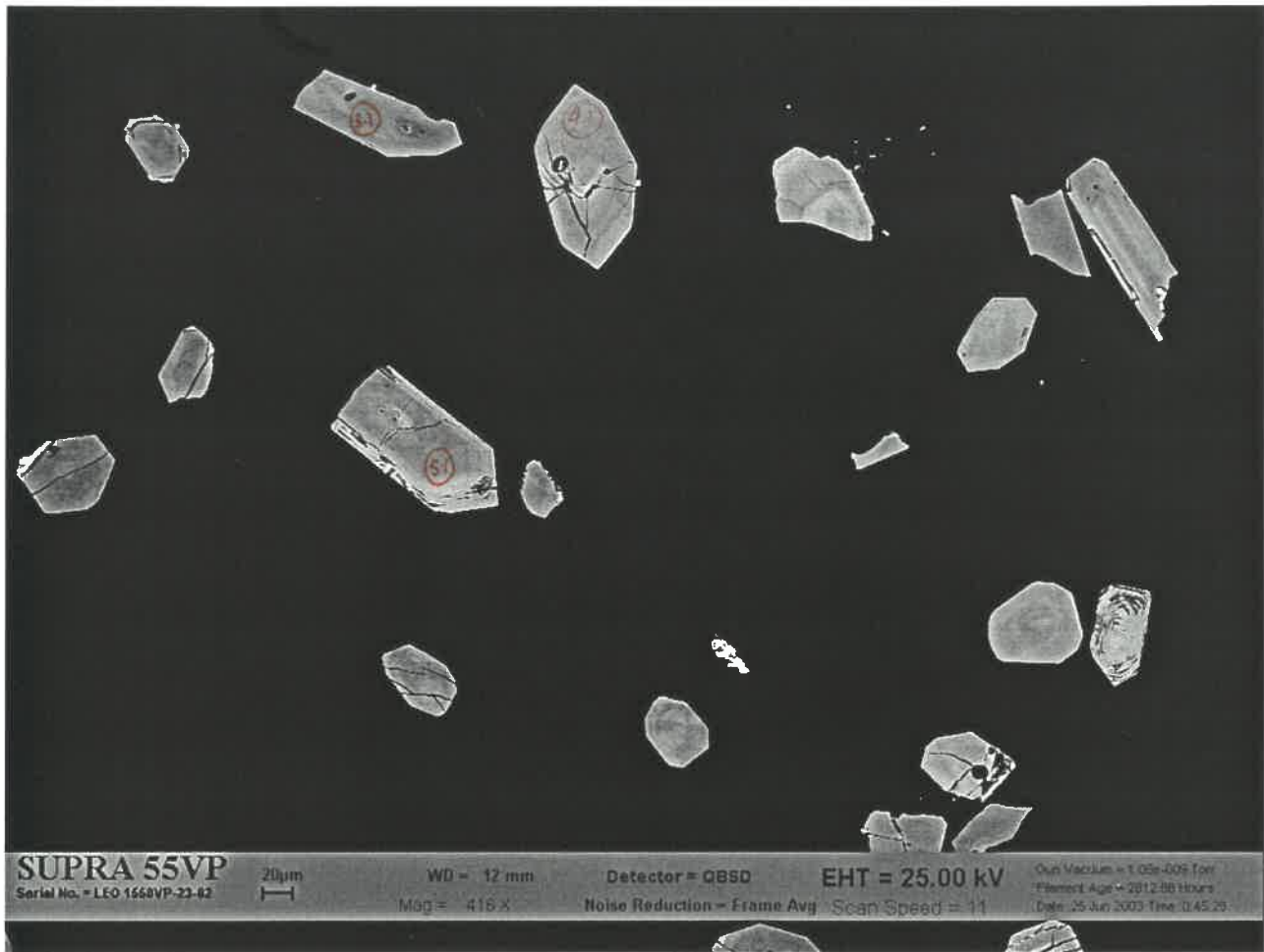




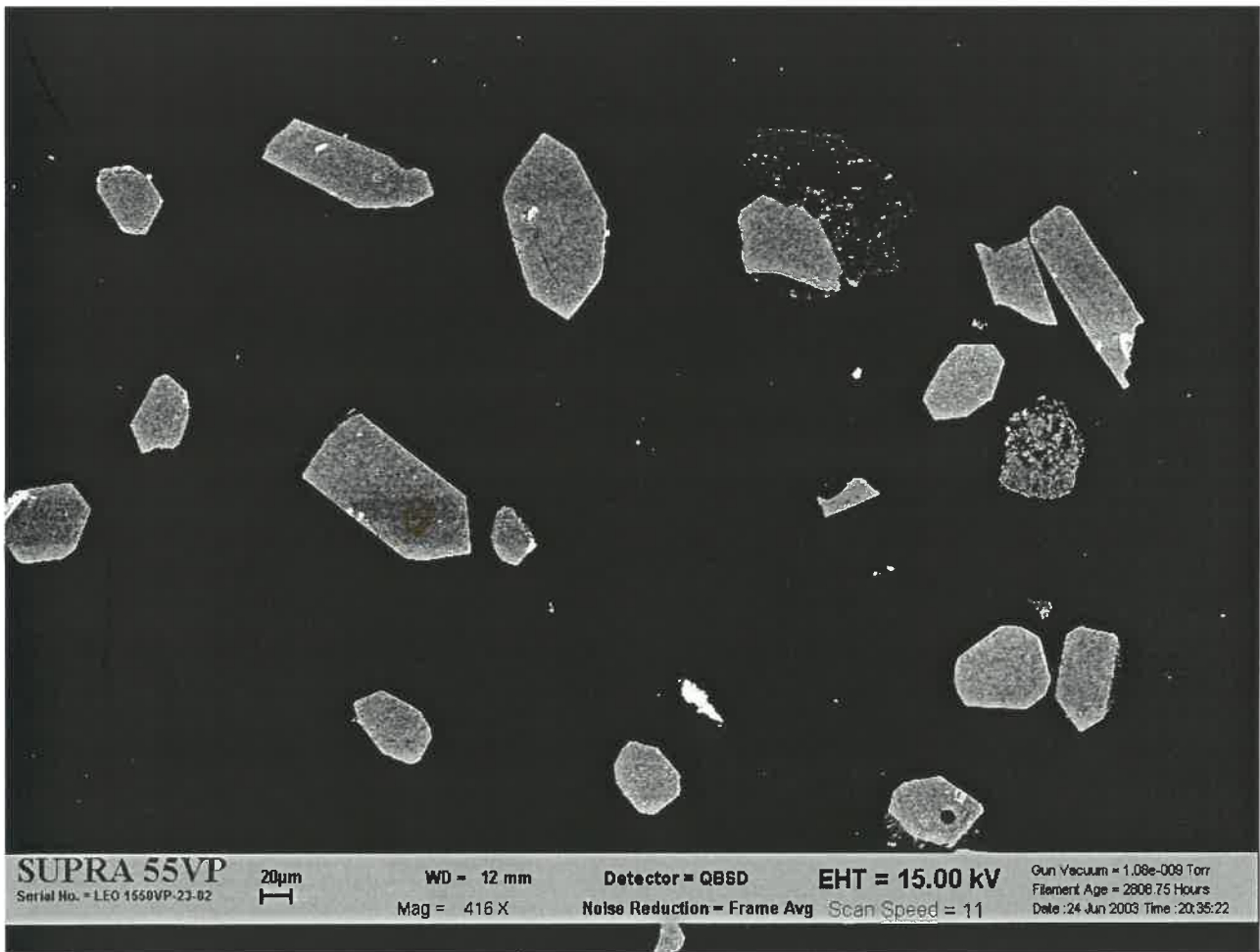
9880B01b.JPG



9880B01c.JPG



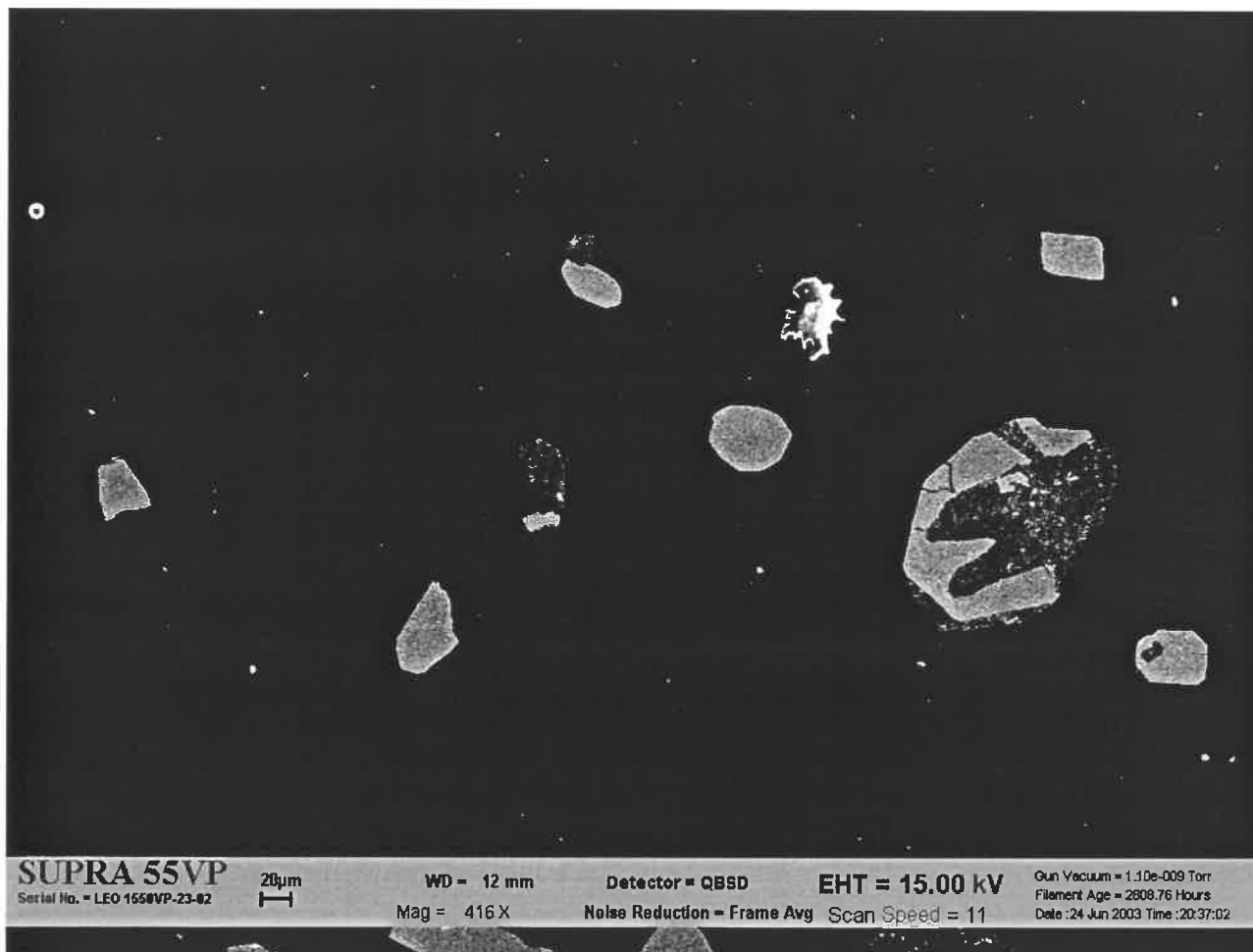
9880B02b.JPG



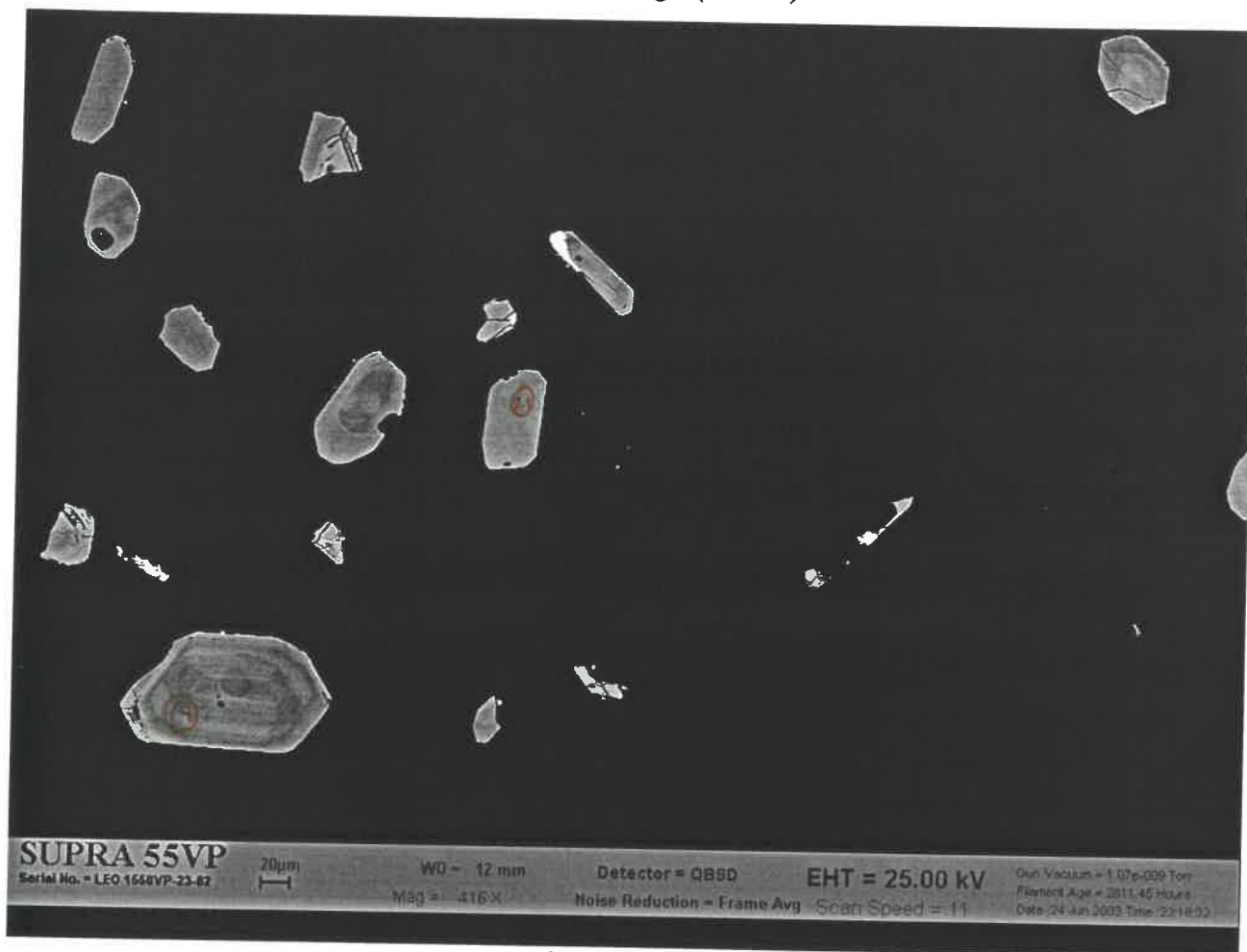
9880B02c.JPG



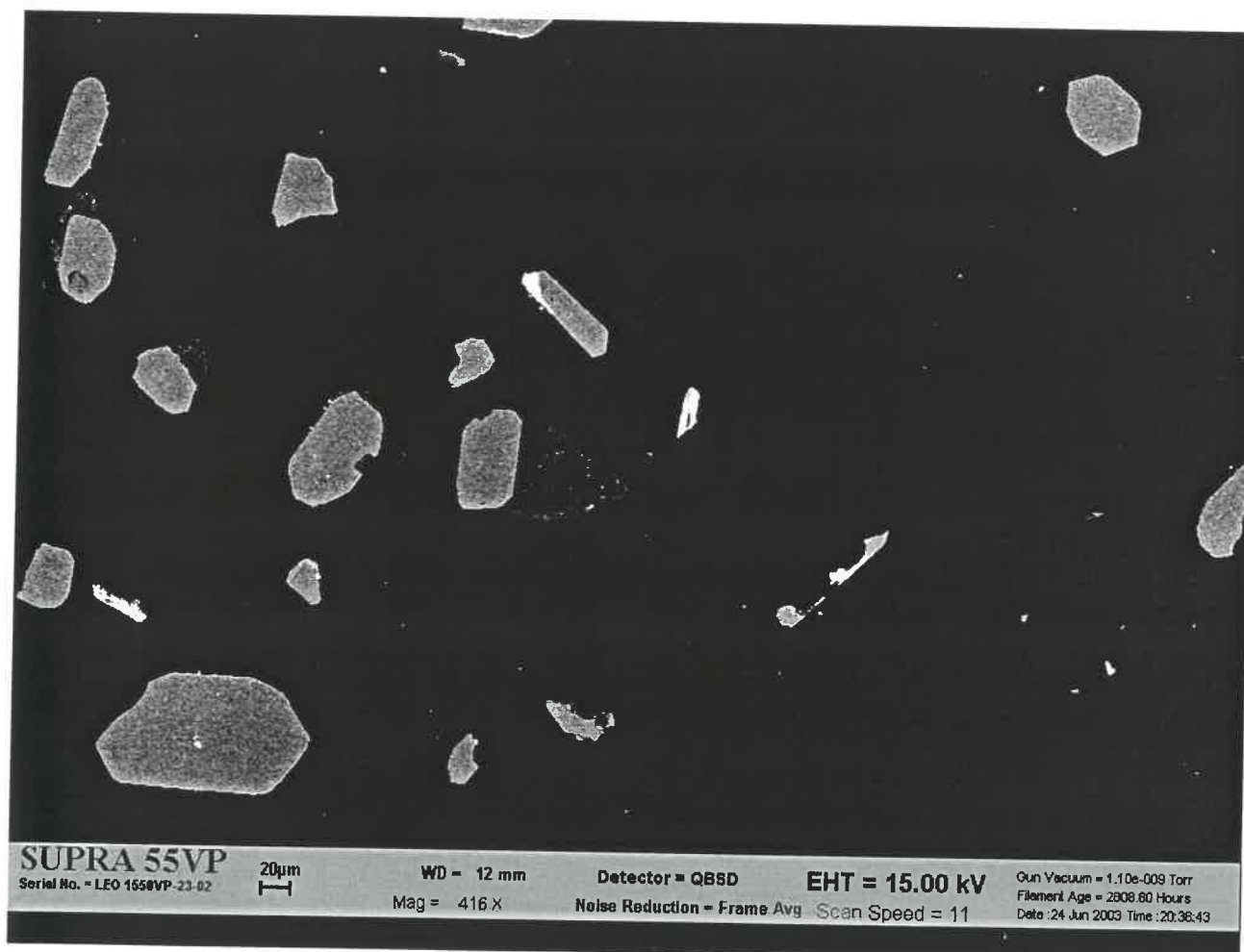
9880B03b.JPG



9880B03c.JPG

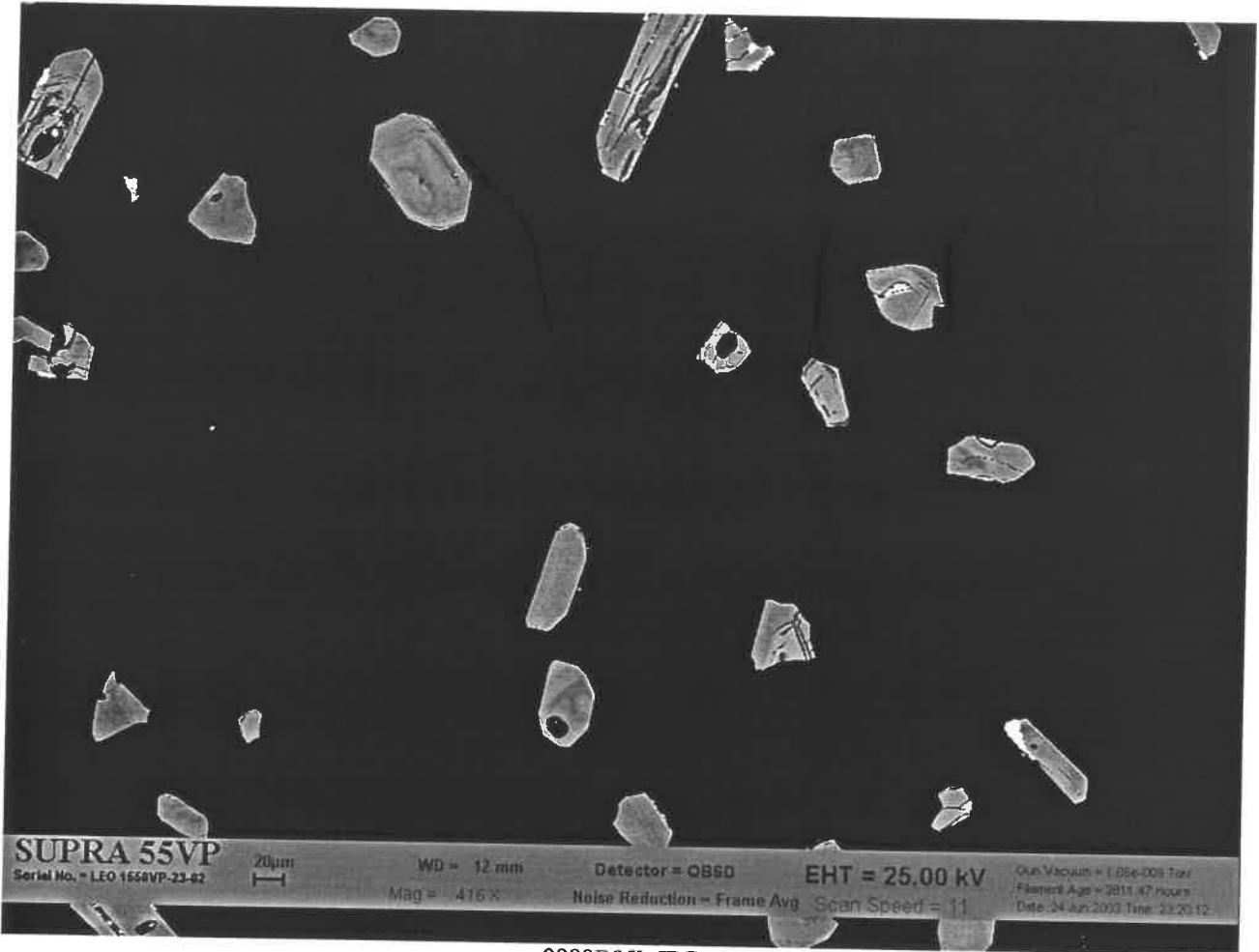


9880B04b.JPG

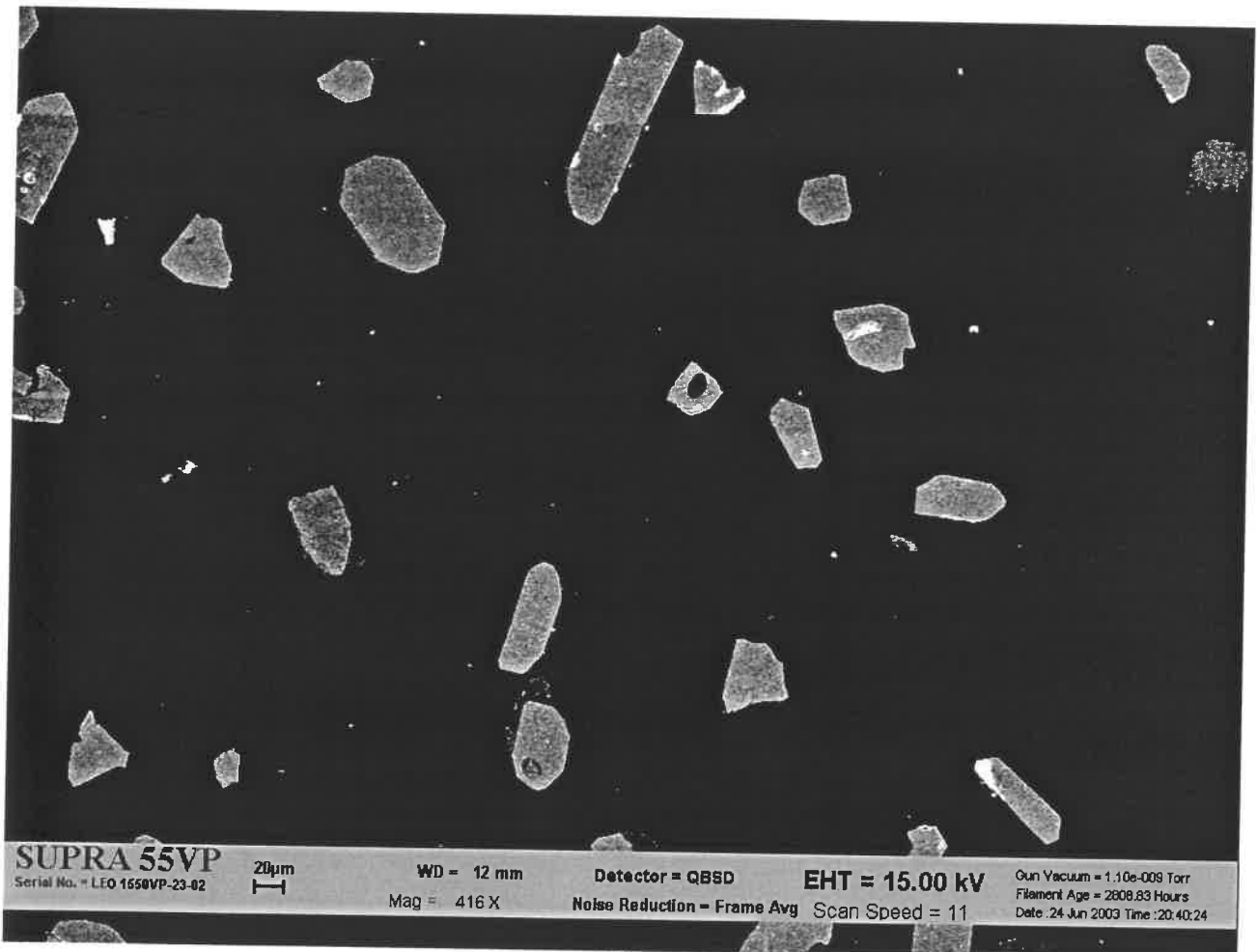


9880B04c.JPG

98-80 SEM images (reversed)



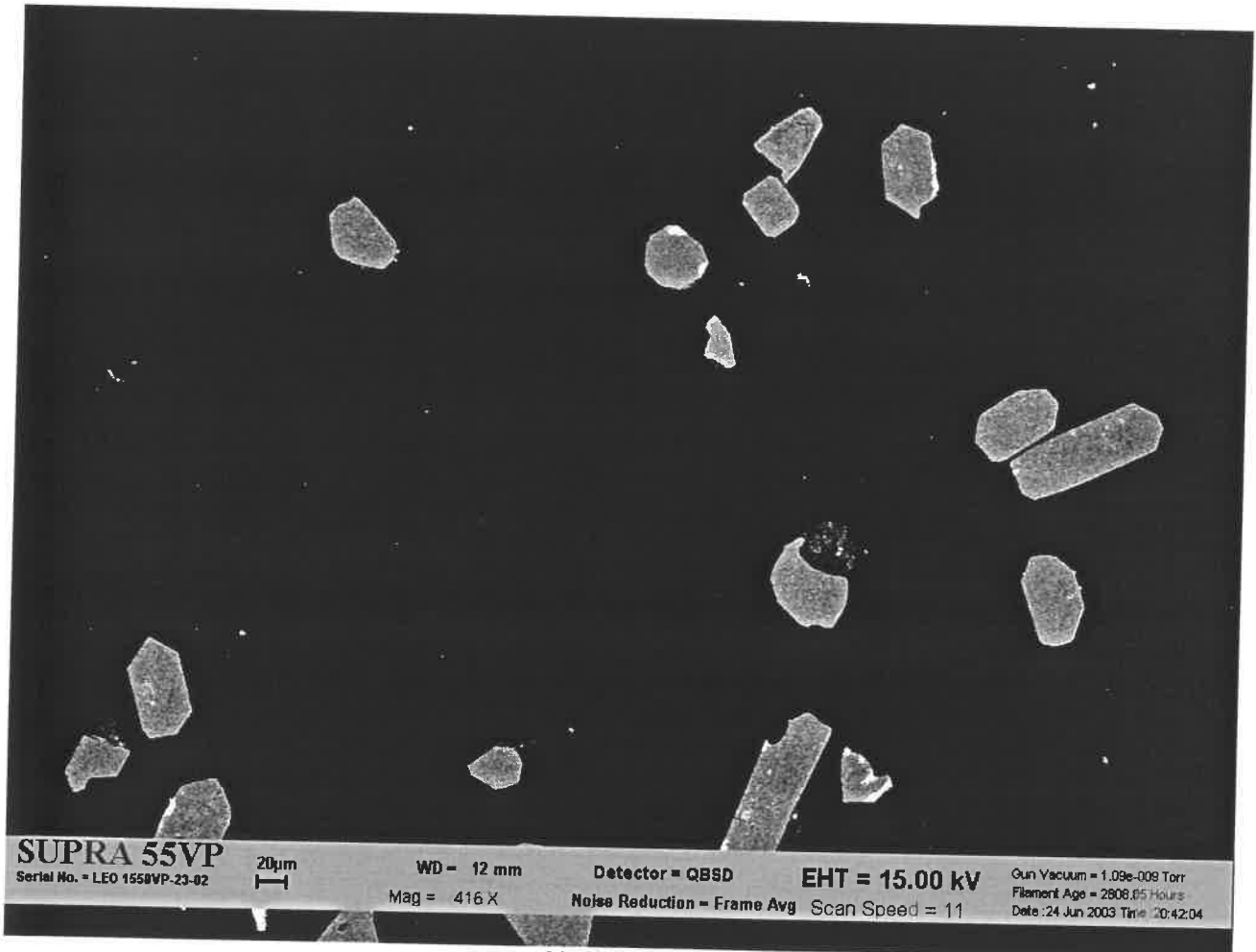
9880B05b.JPG



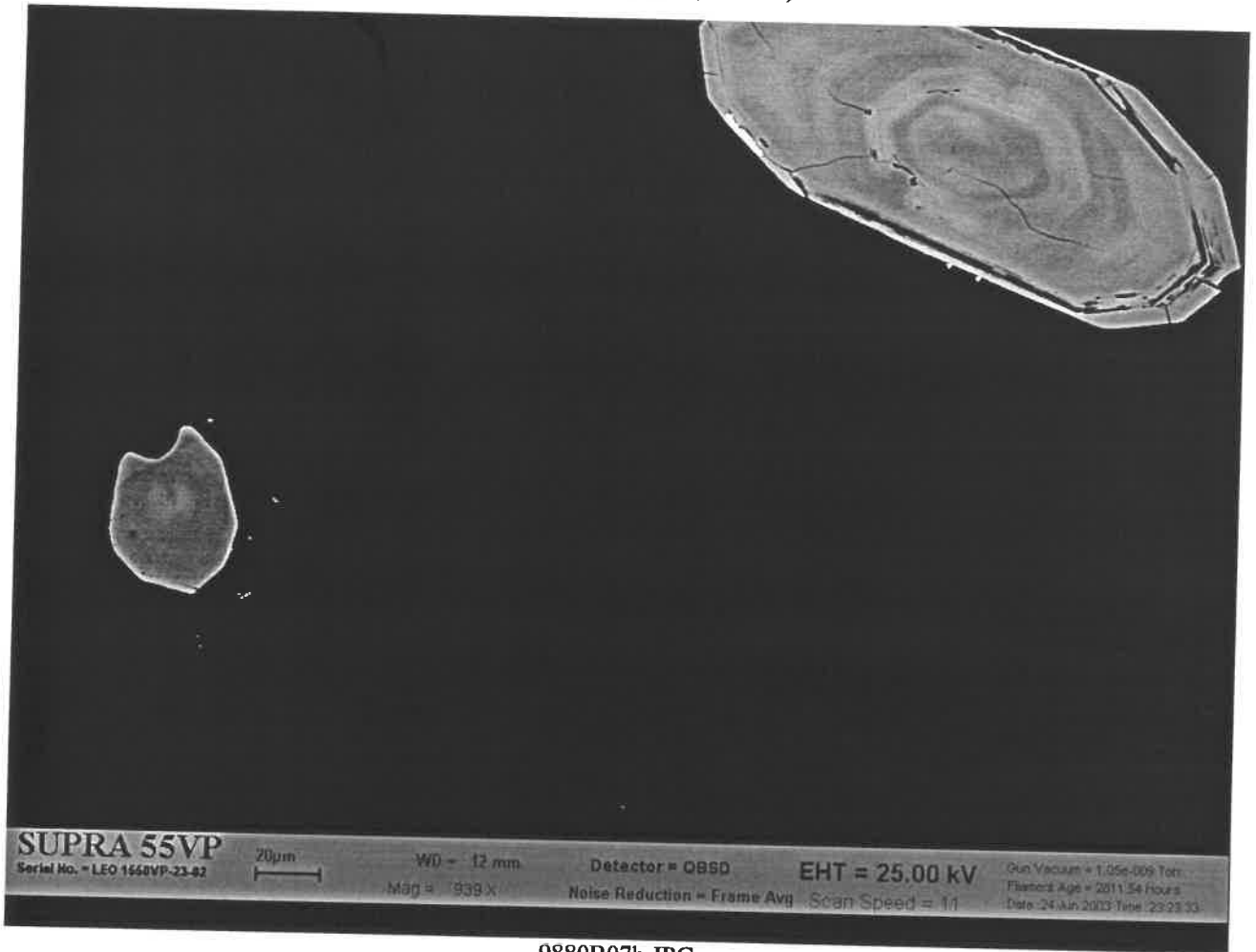
9880B05c.JPG



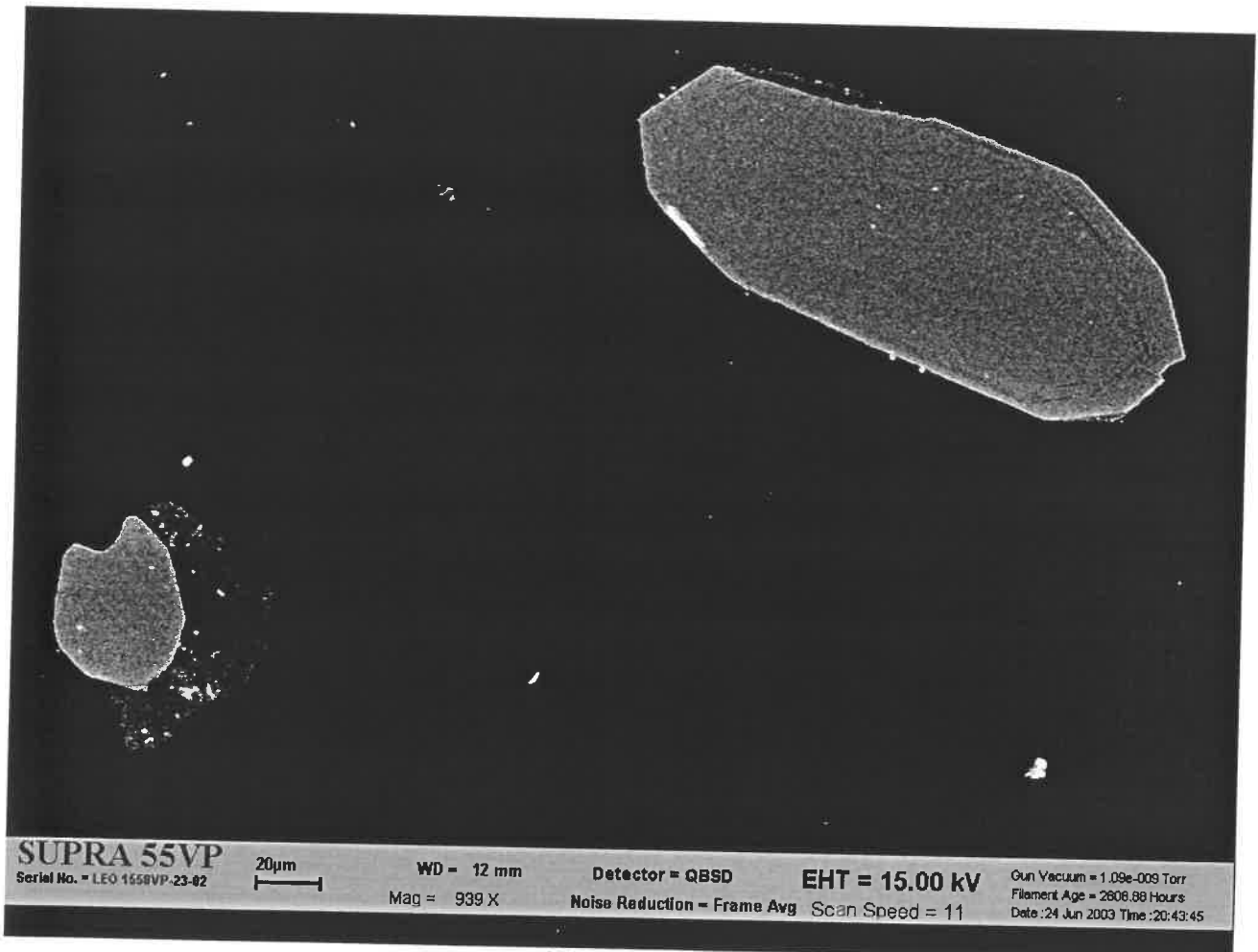
9880B06b.JPG



9880B06c.JPG



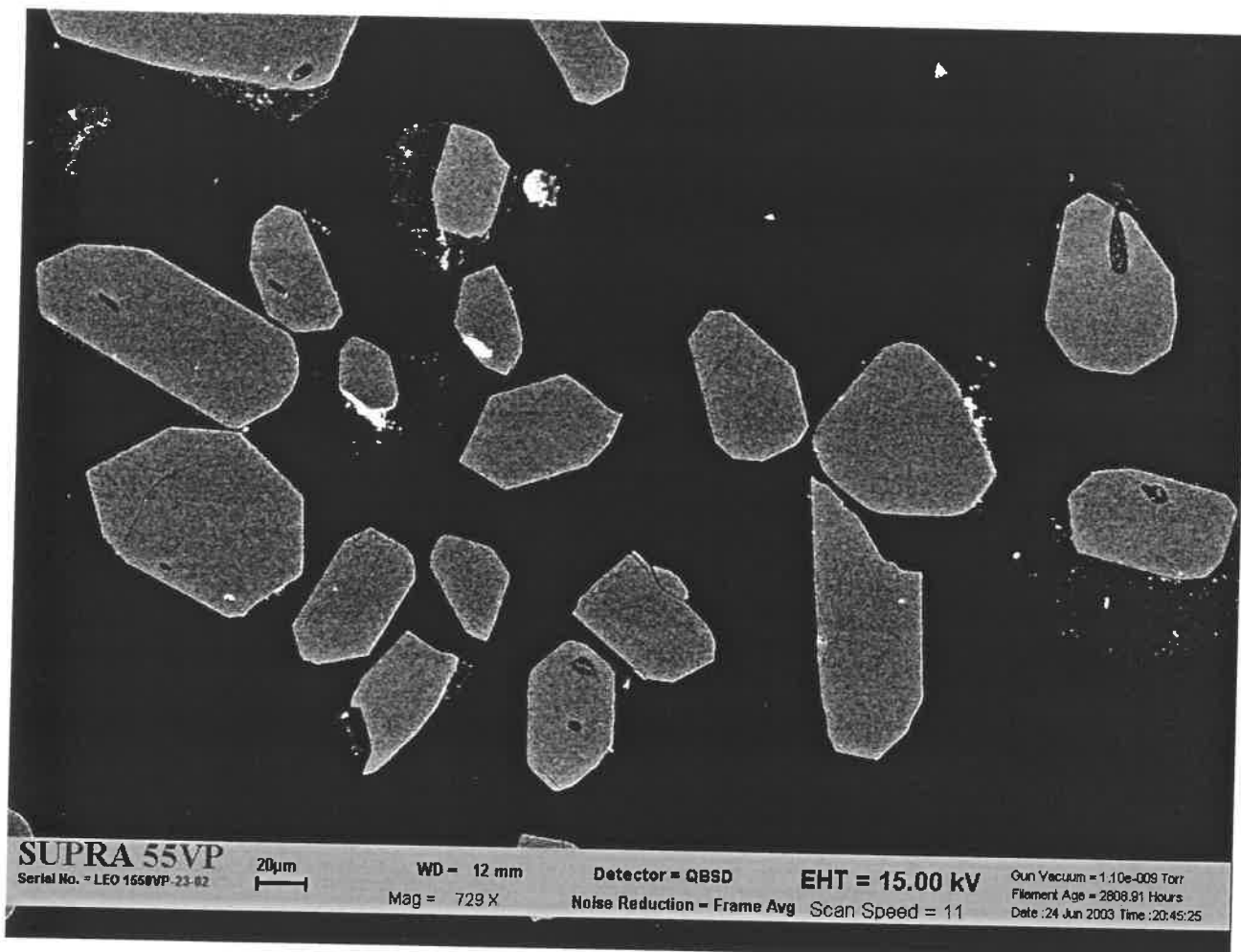
9880B07b.JPG



9880B07c.JPG



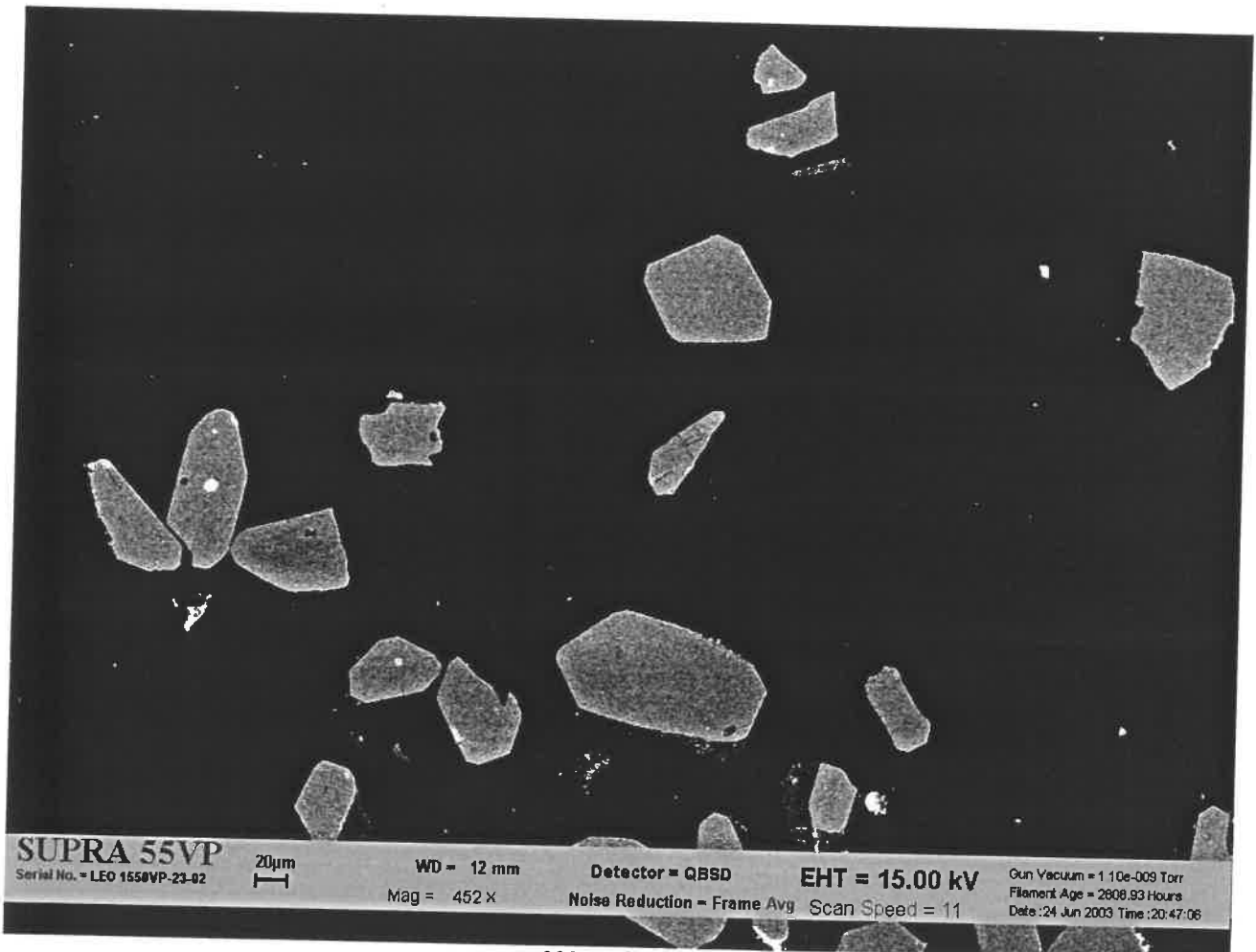
9880B08b.JPG



9880B08c.JPG



9880B09b.JPG

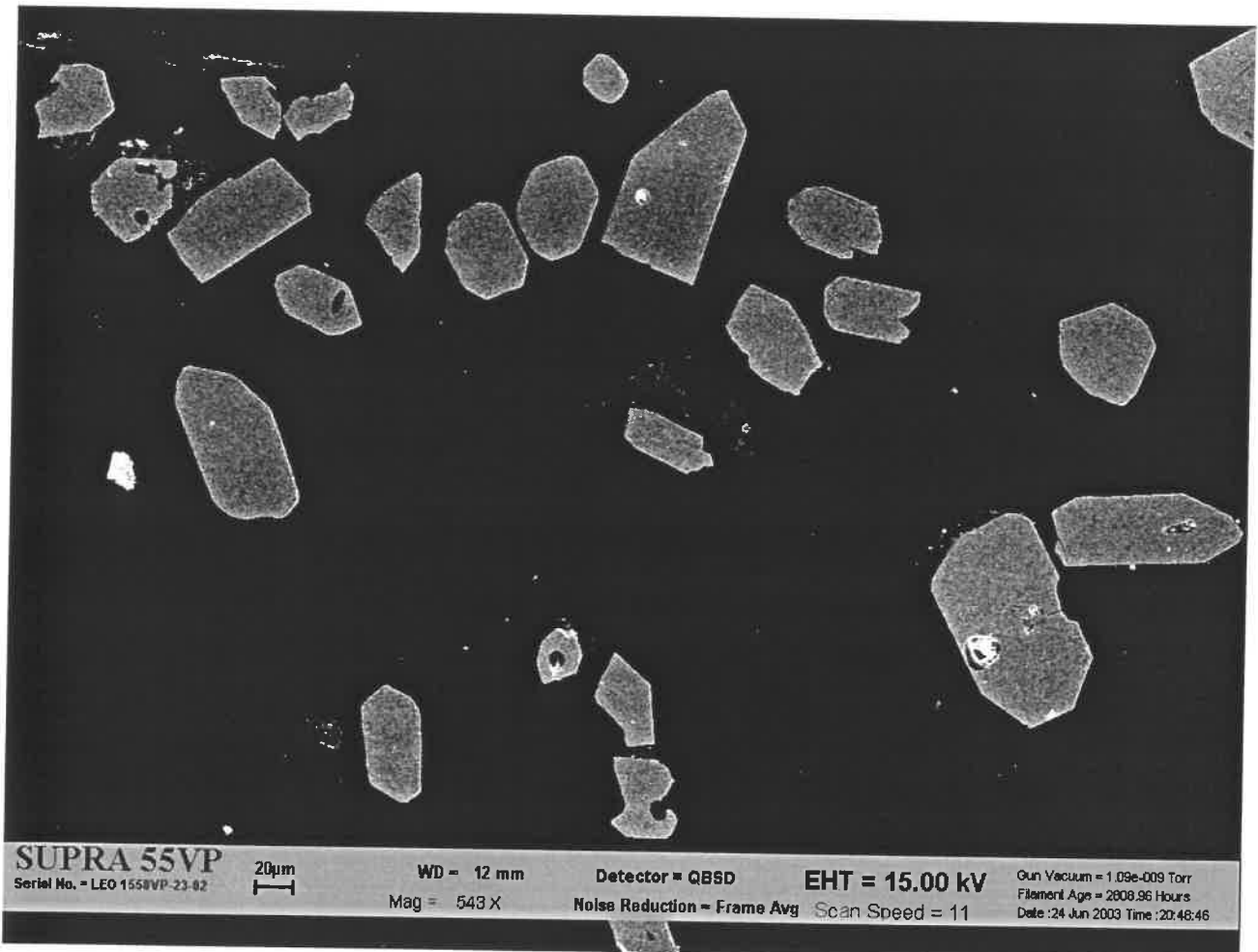


9880B09c.JPG

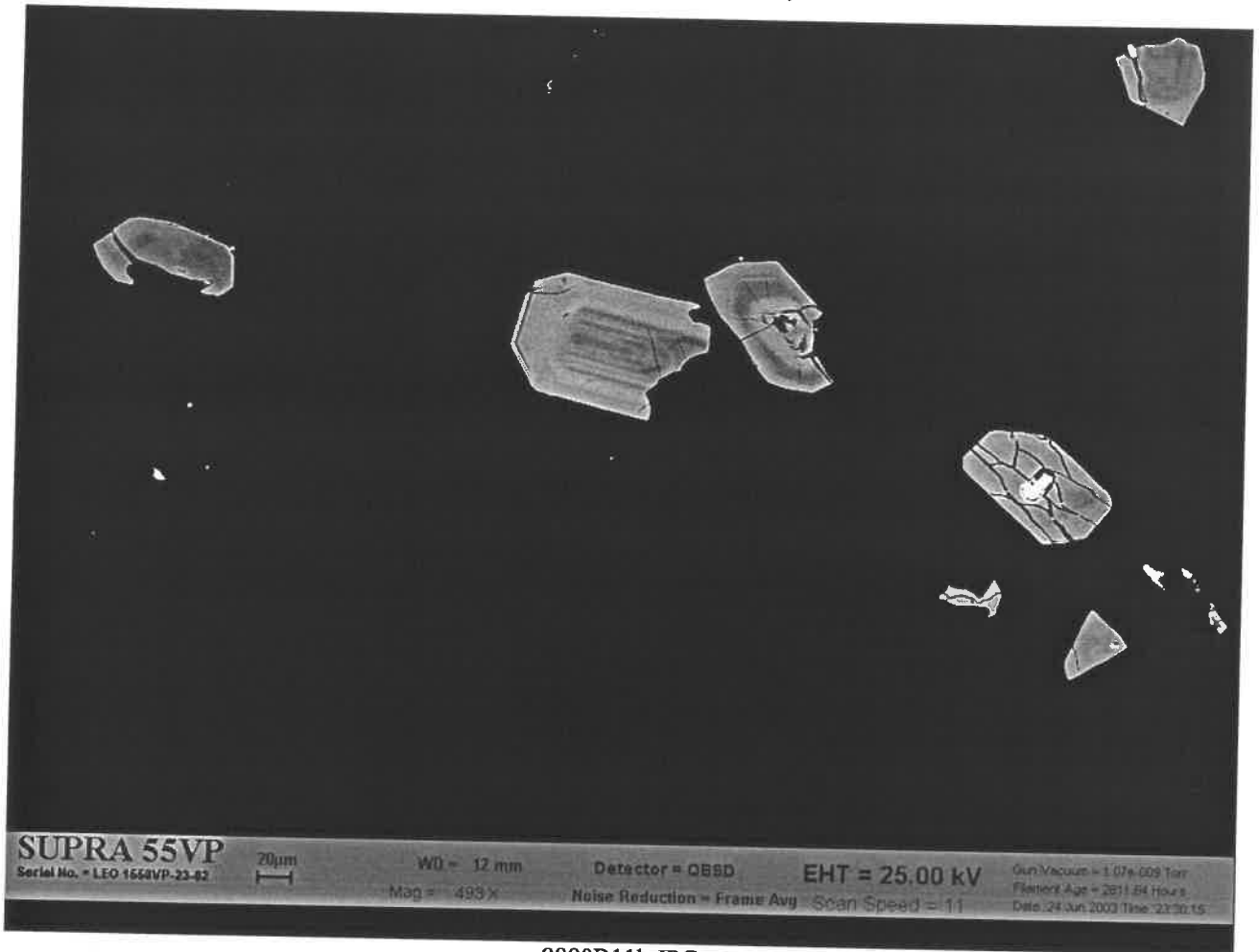
98-80 SEM images (reversed)



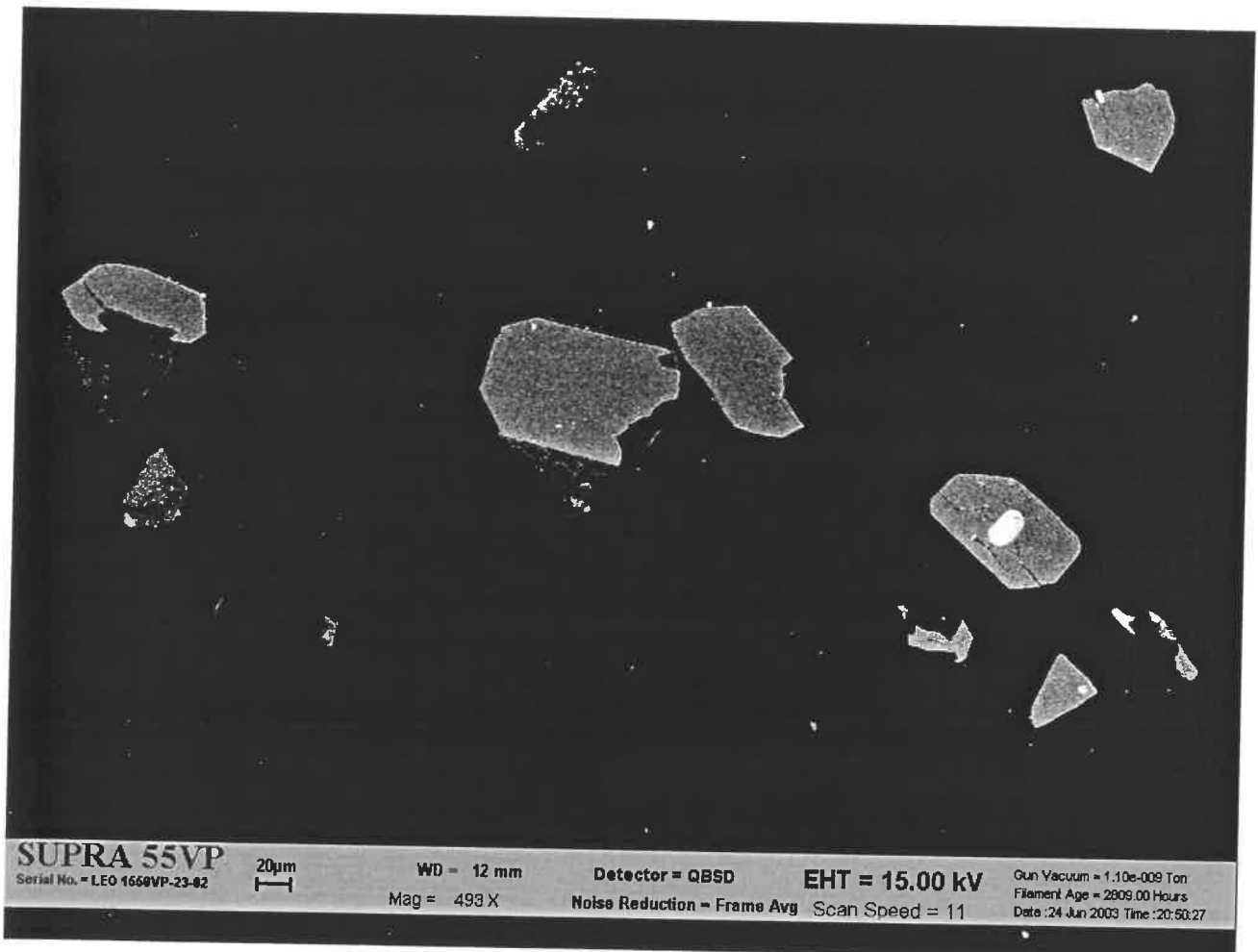
9880B10b.JPG



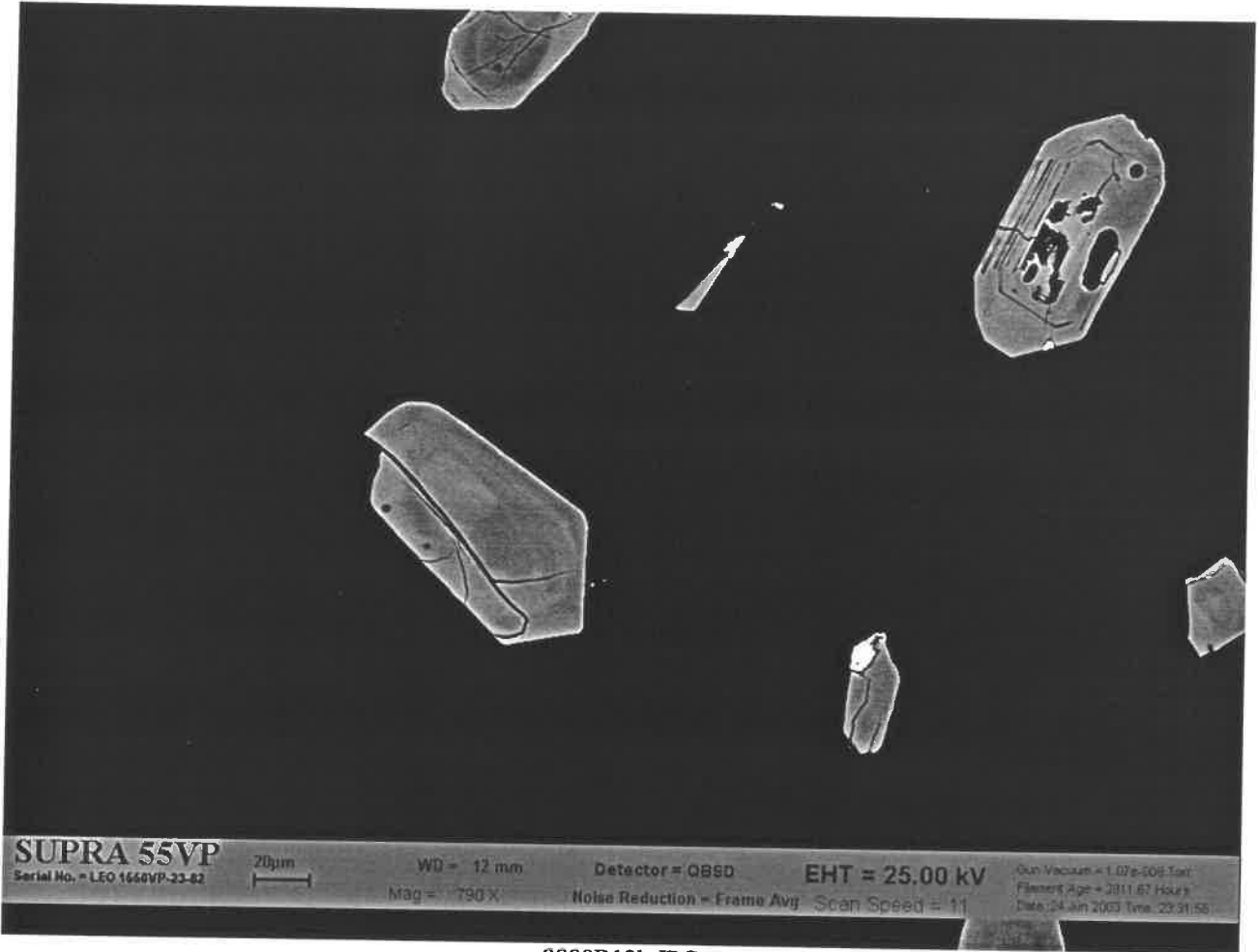
9880B10c.JPG



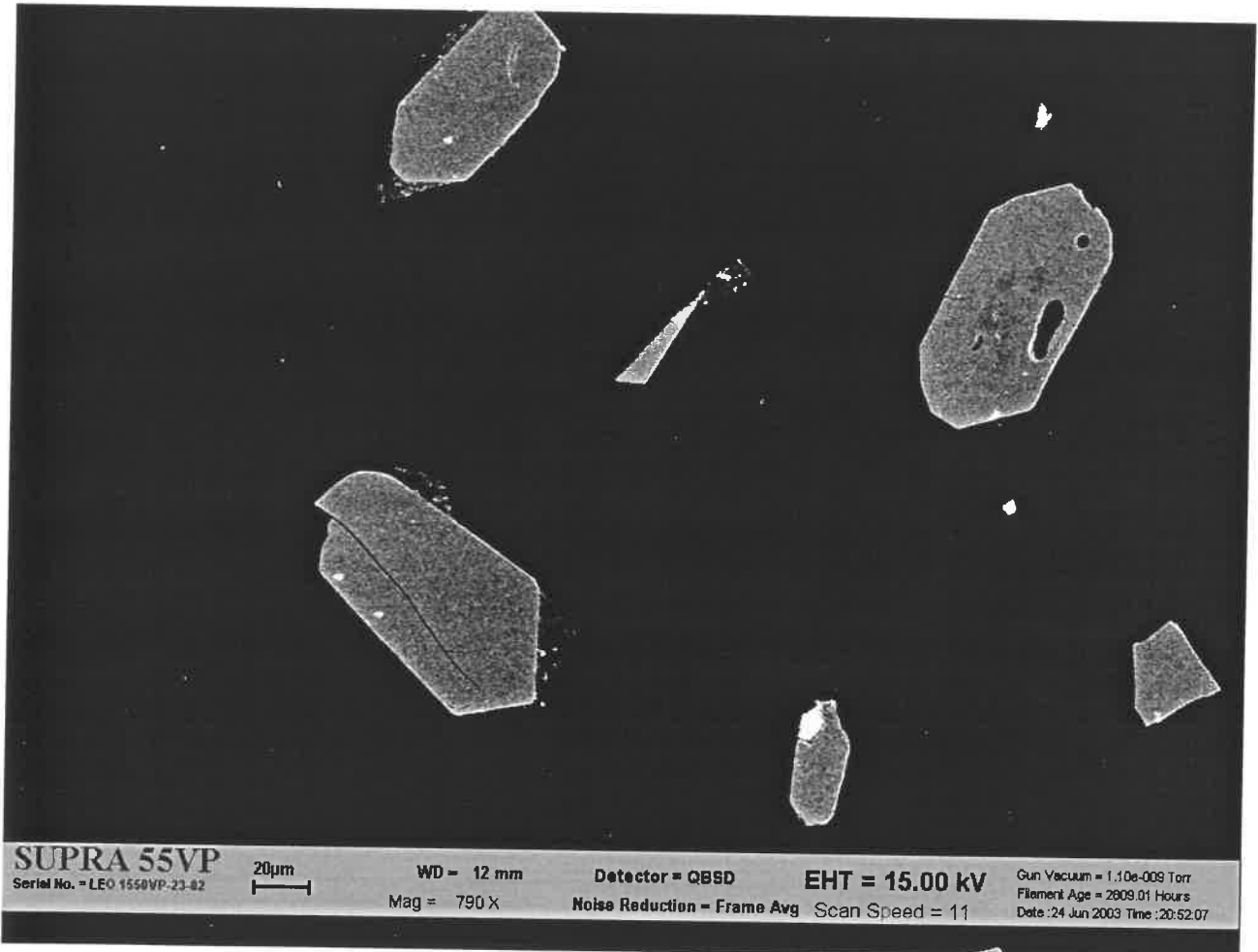
9880B11b.JPG



9880B11c.JPG



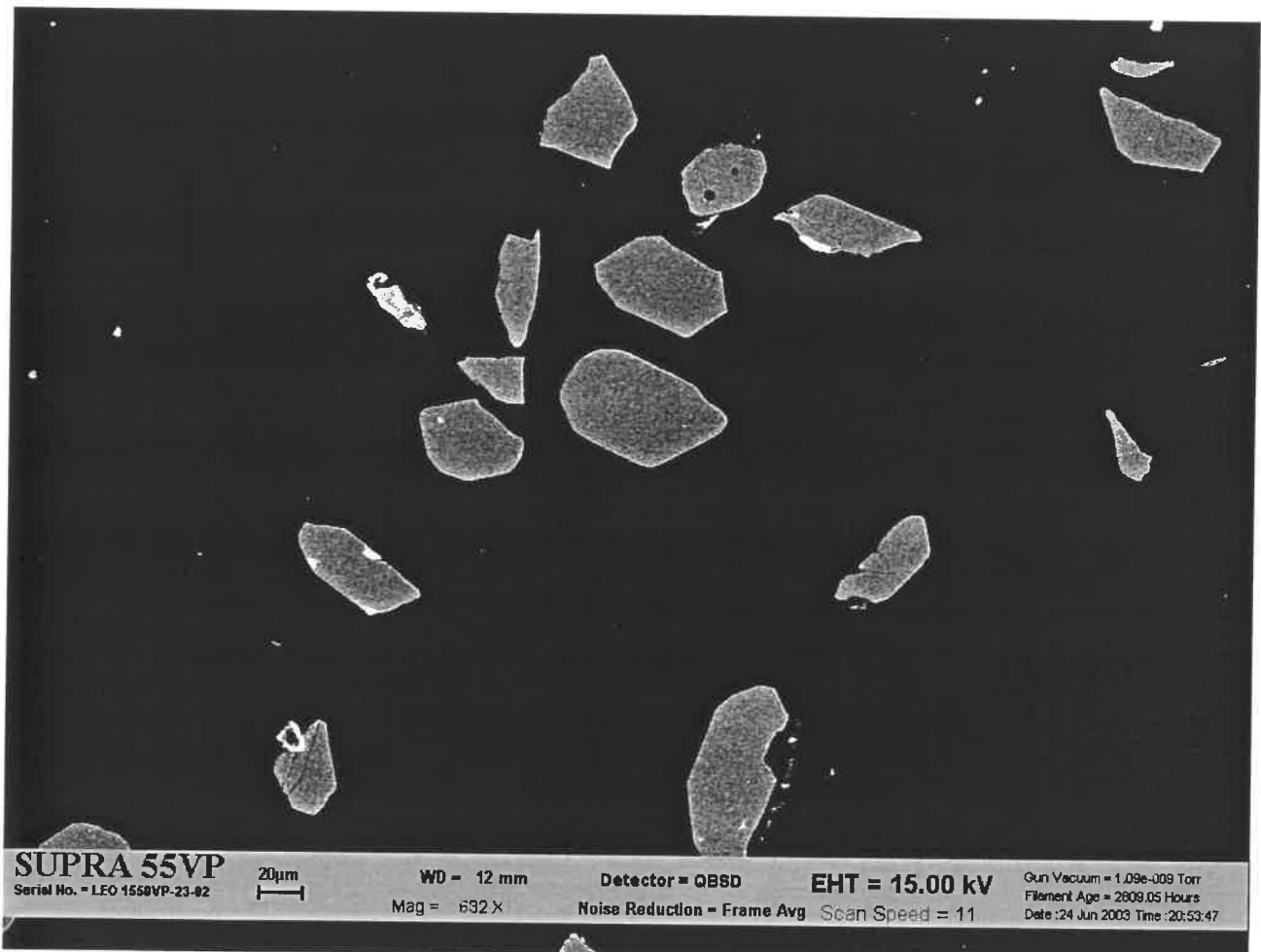
9880B12b.JPG



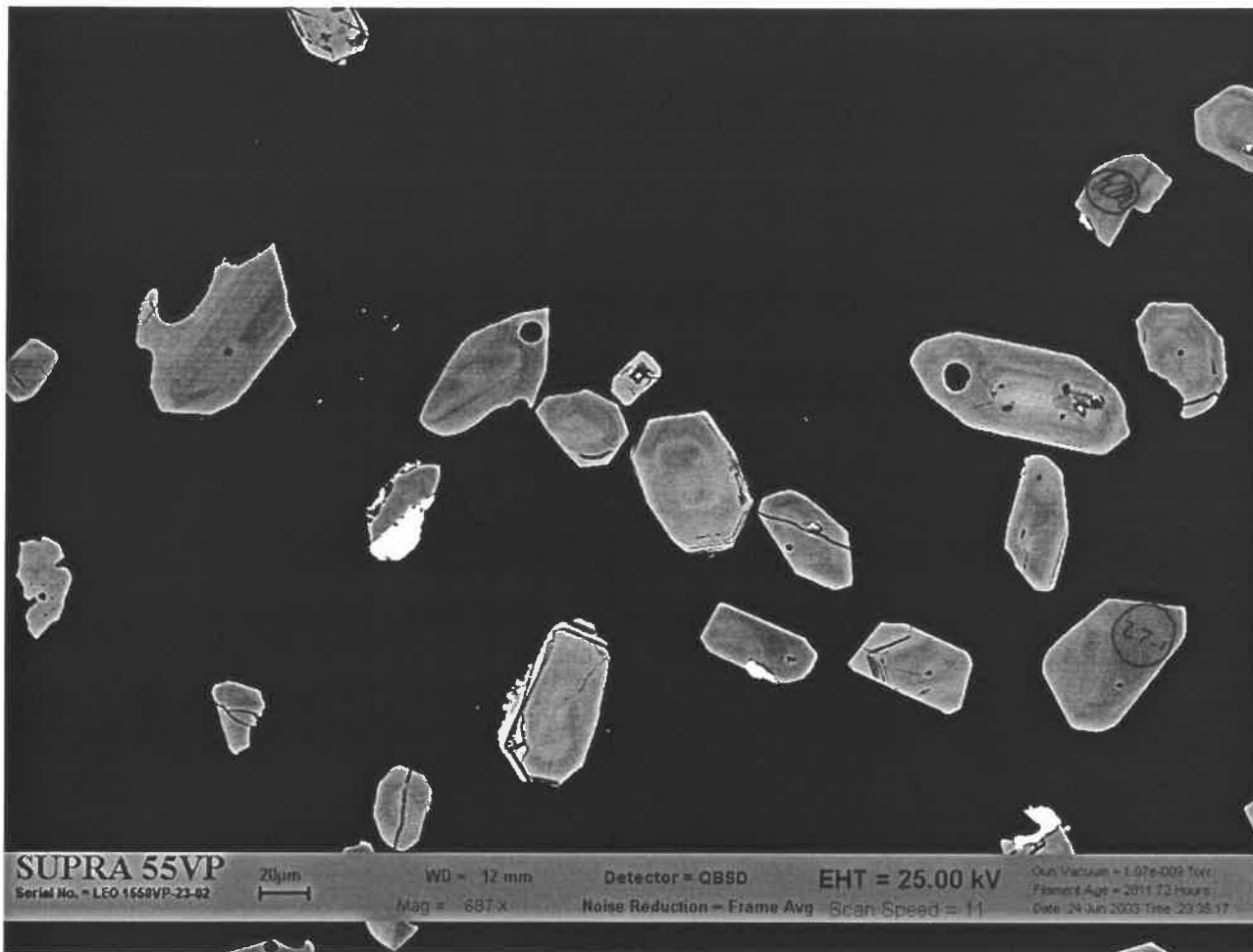
9880B12c.JPG



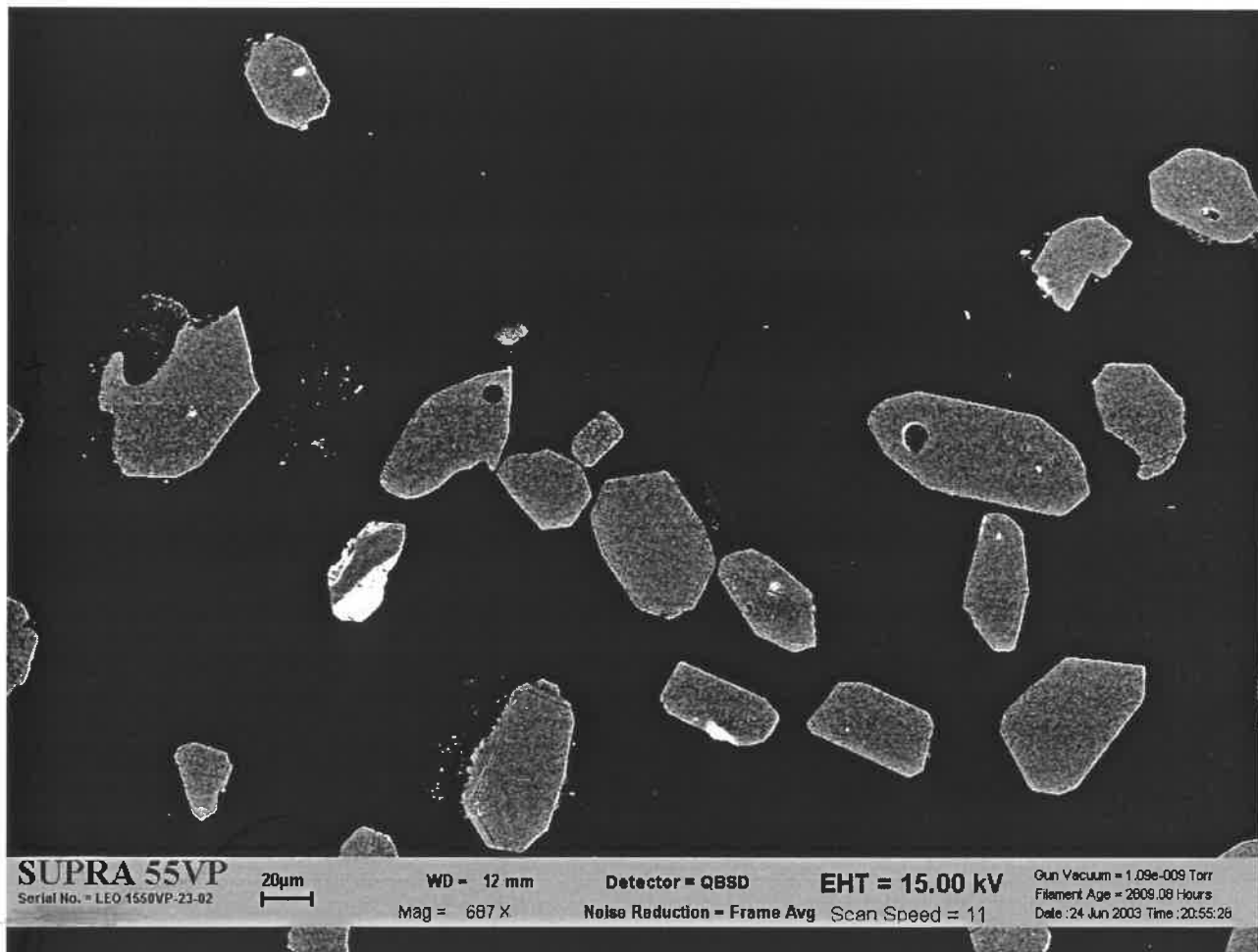
9880B13b.JPG



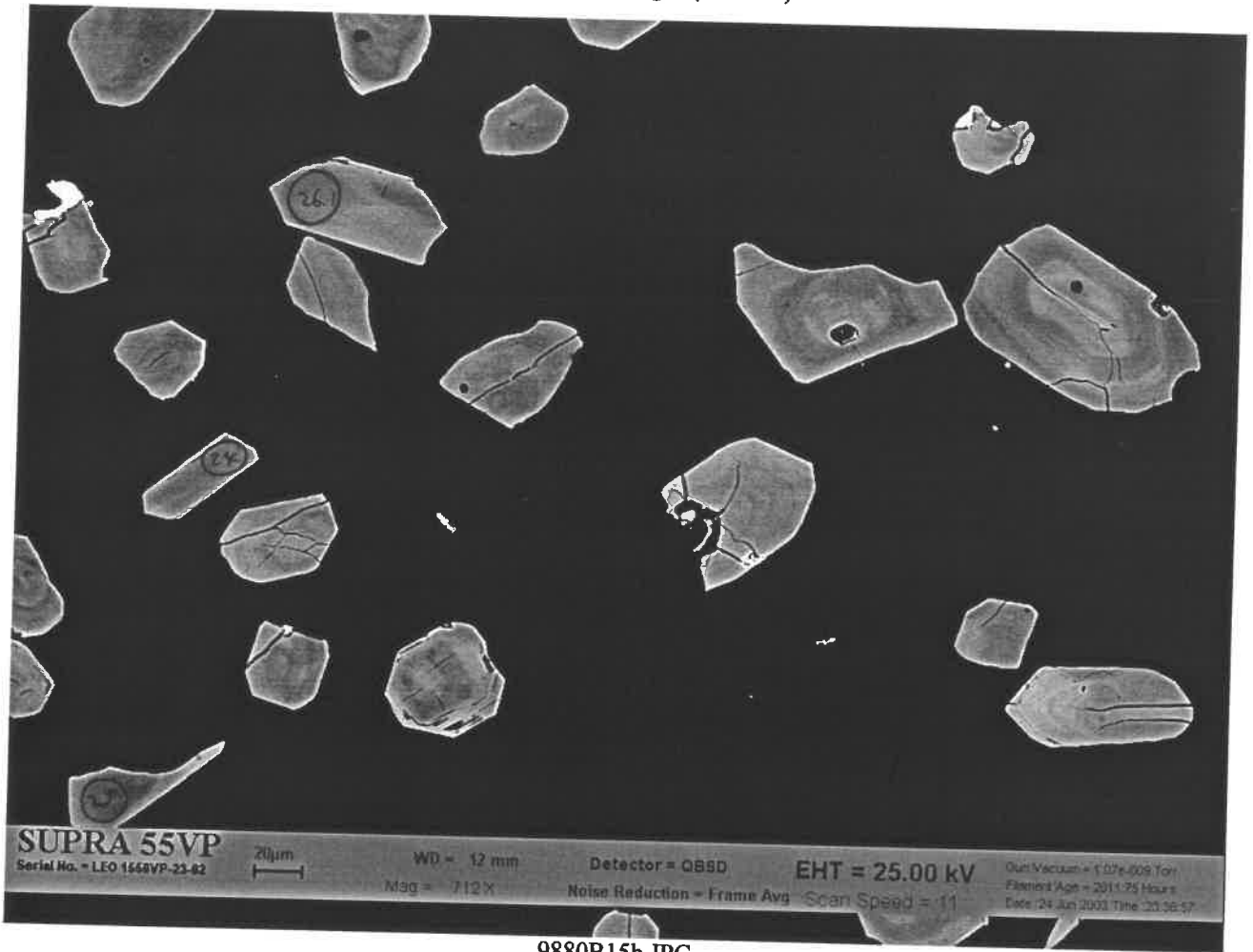
9880B13c.JPG



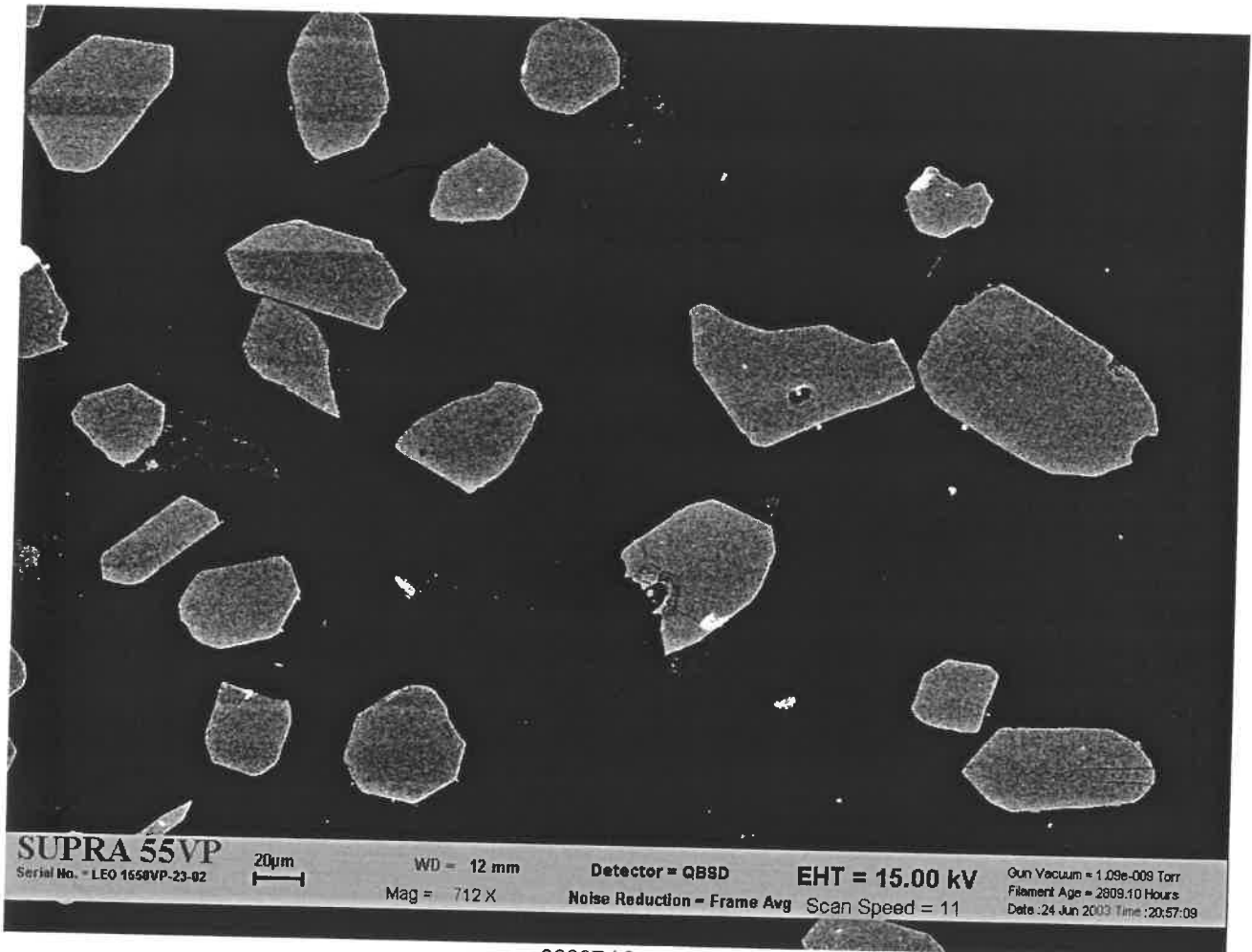
9880B14b.JPG



9880B14c.JPG



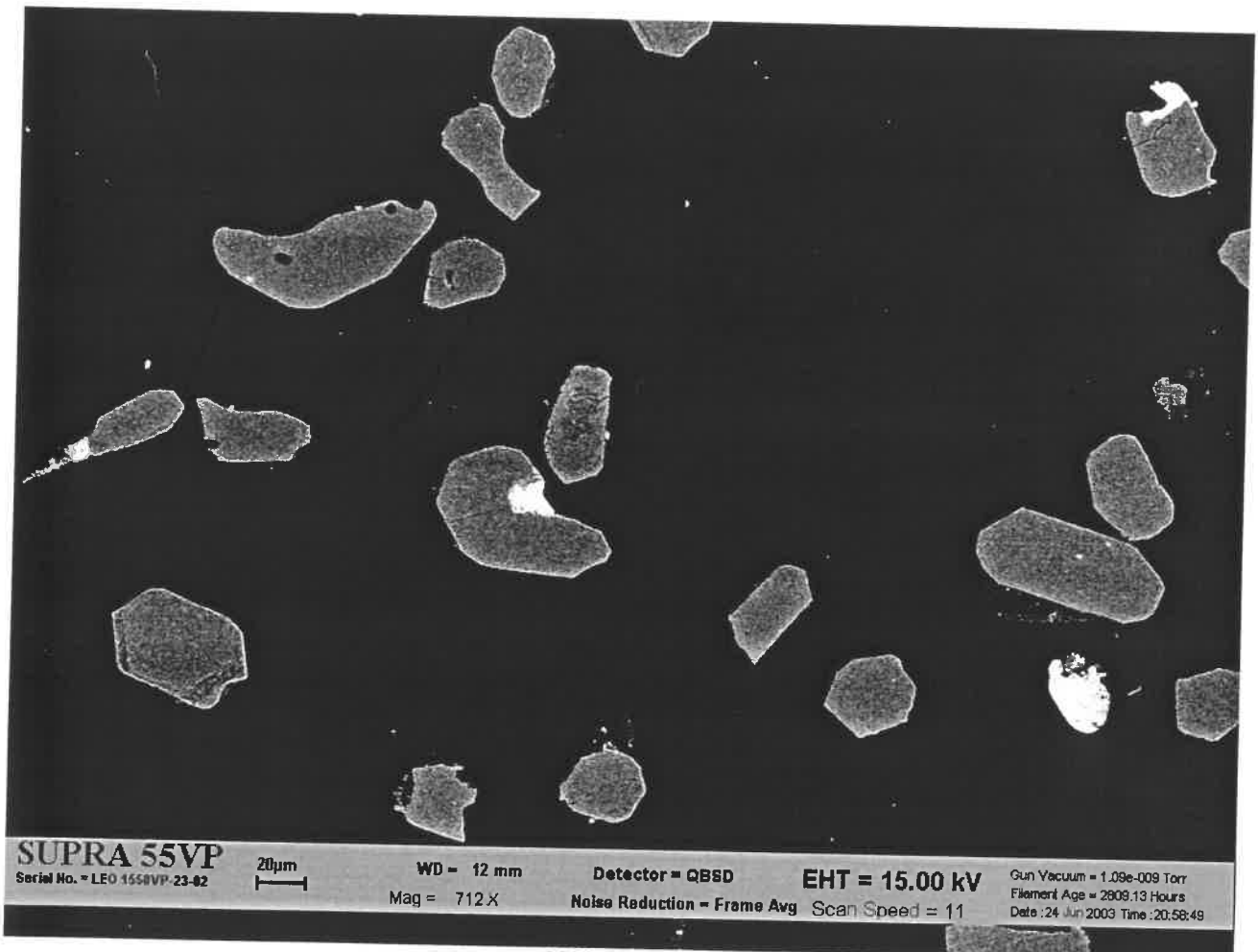
9880B15b.JPG



9880B15c.JPG



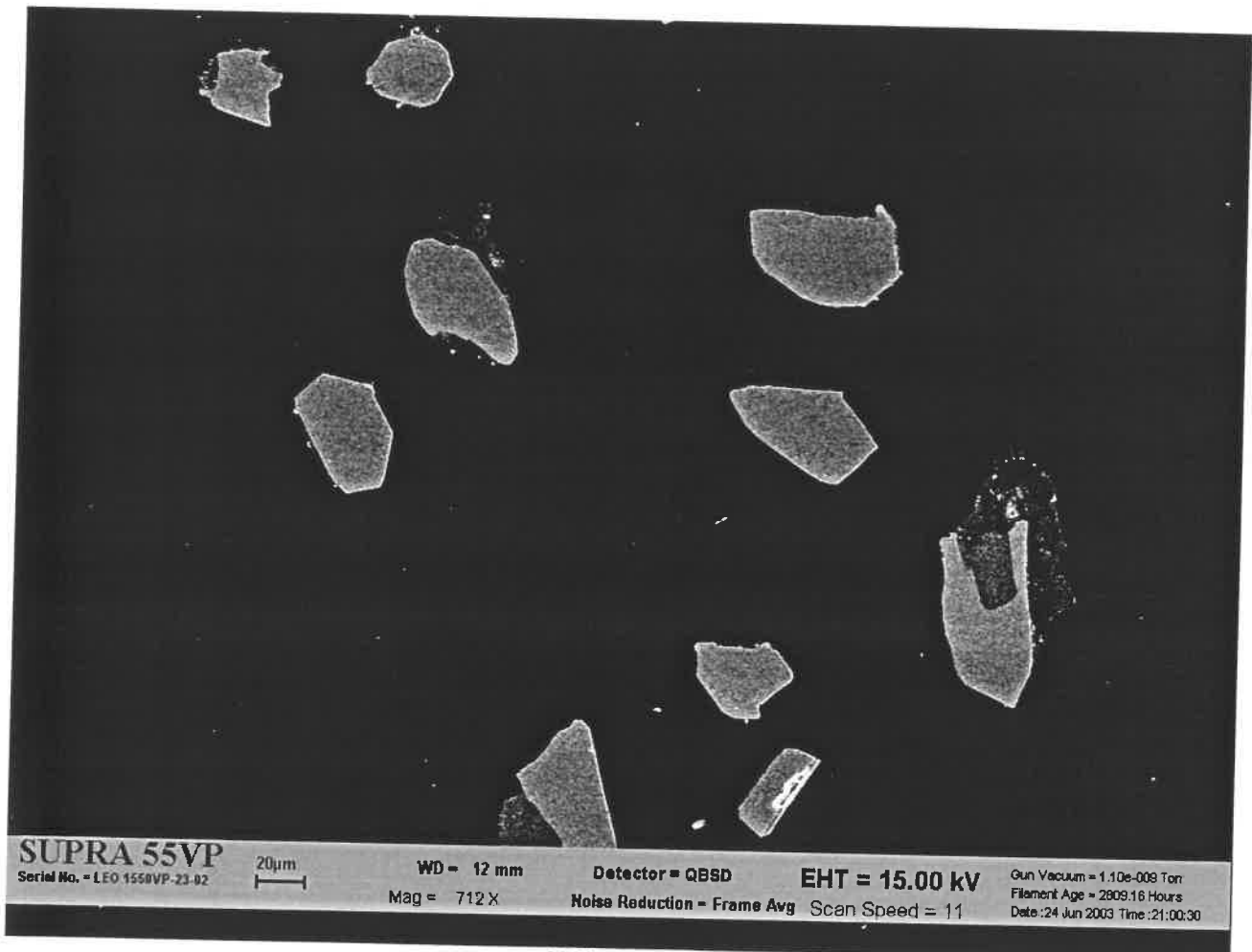
9880B16b.JPG



9880B16c.JPG



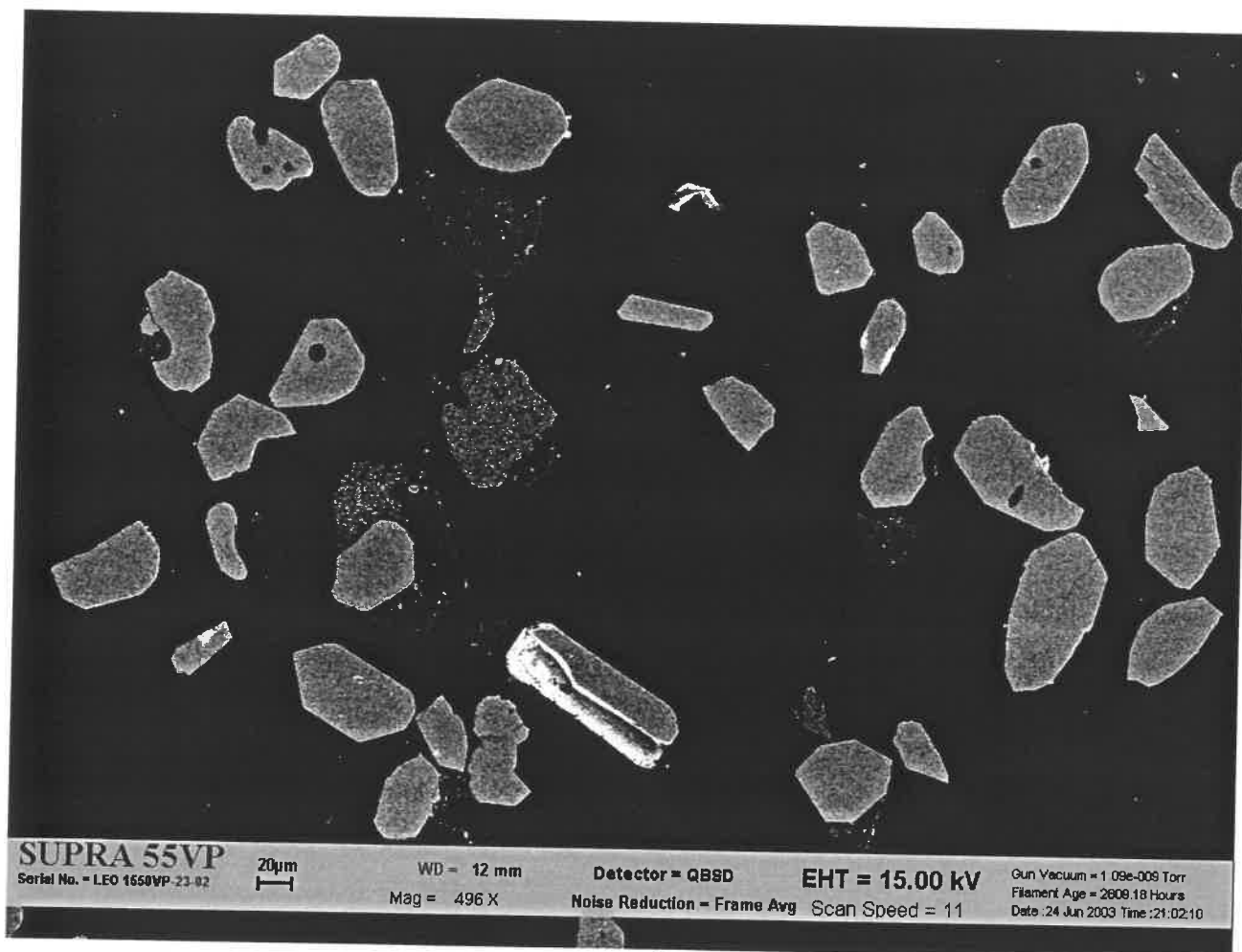
9880B17b.JPG



9880B17c.JPG



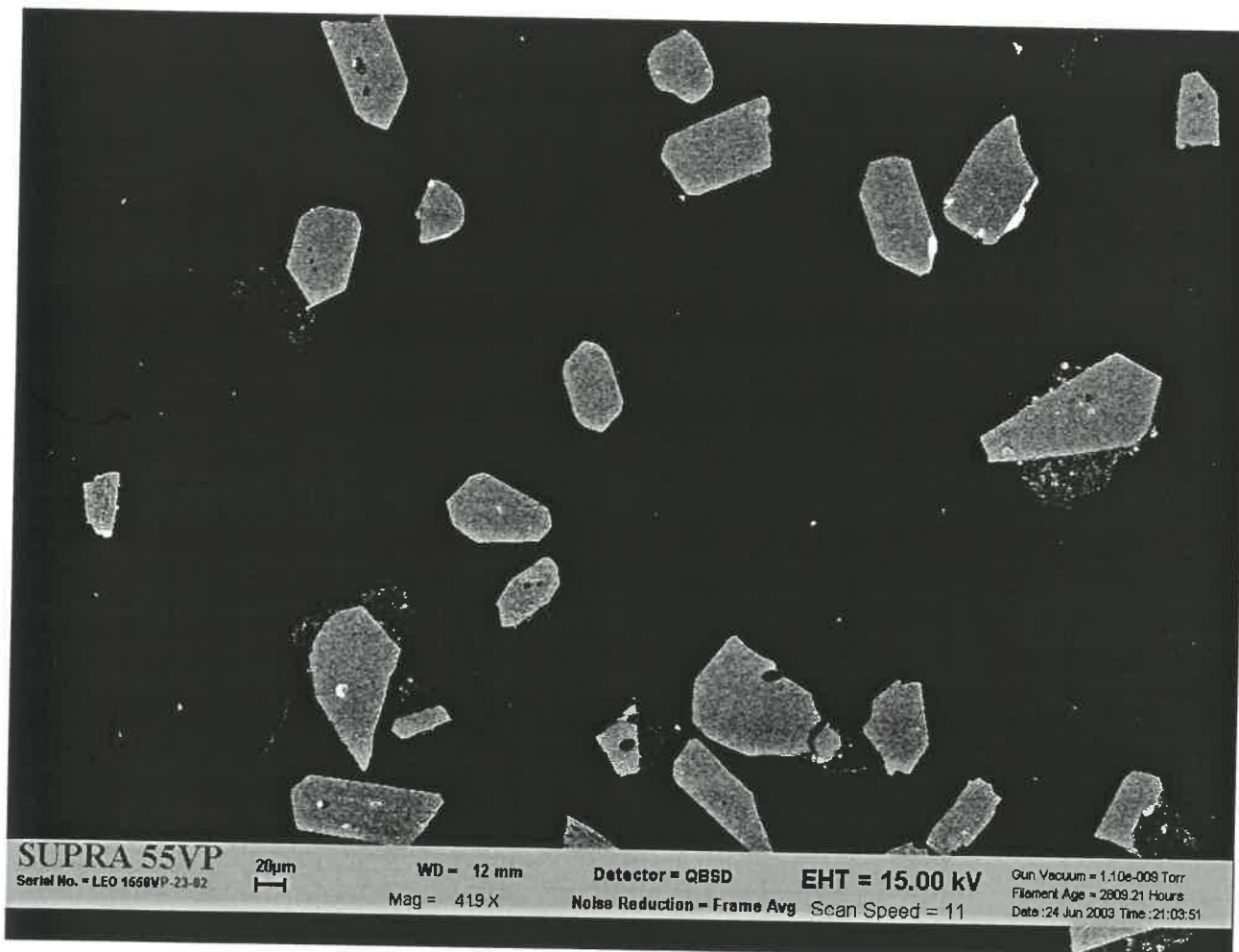
9880B18b.JPG



9880B18c.JPG



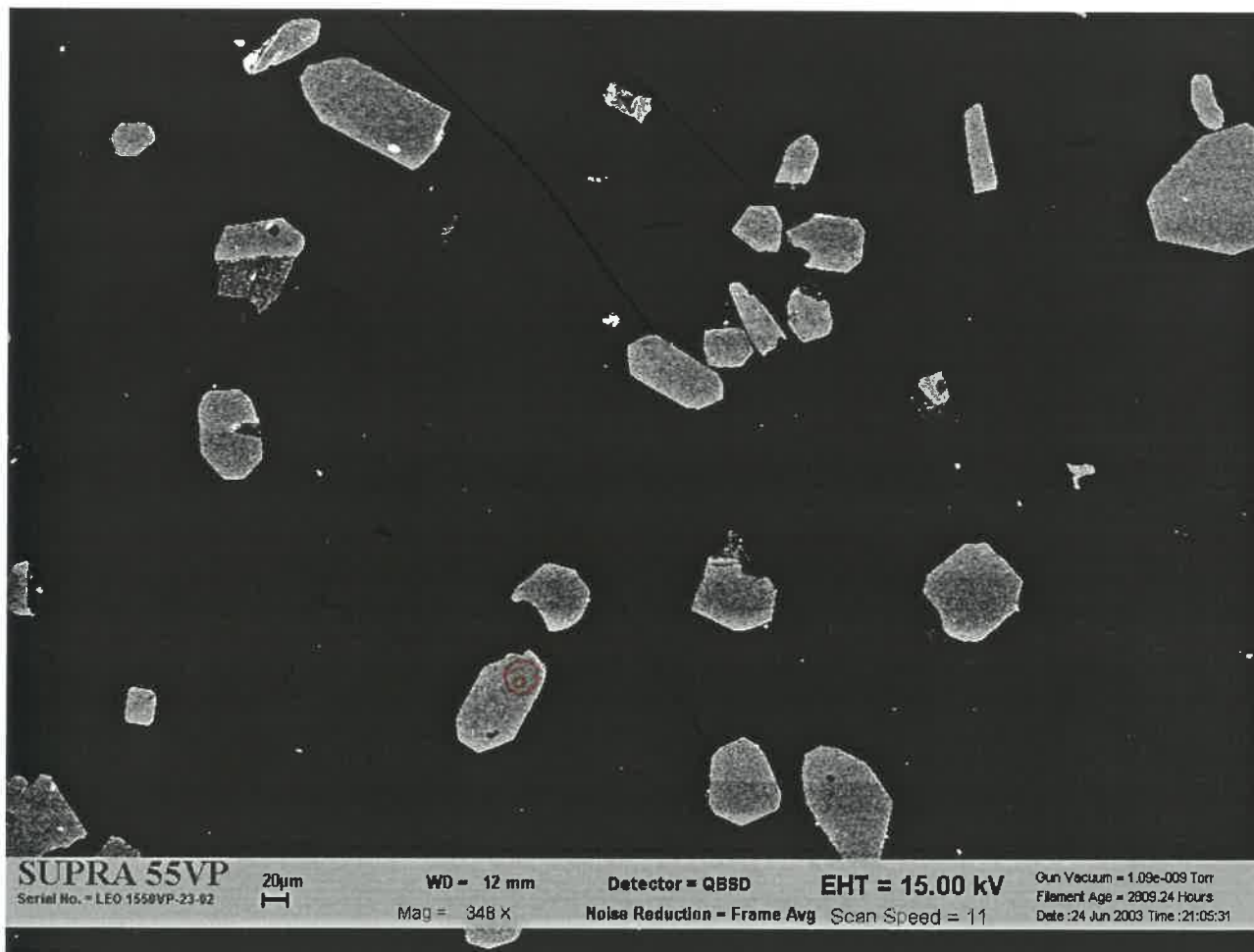
9880B19b.JPG



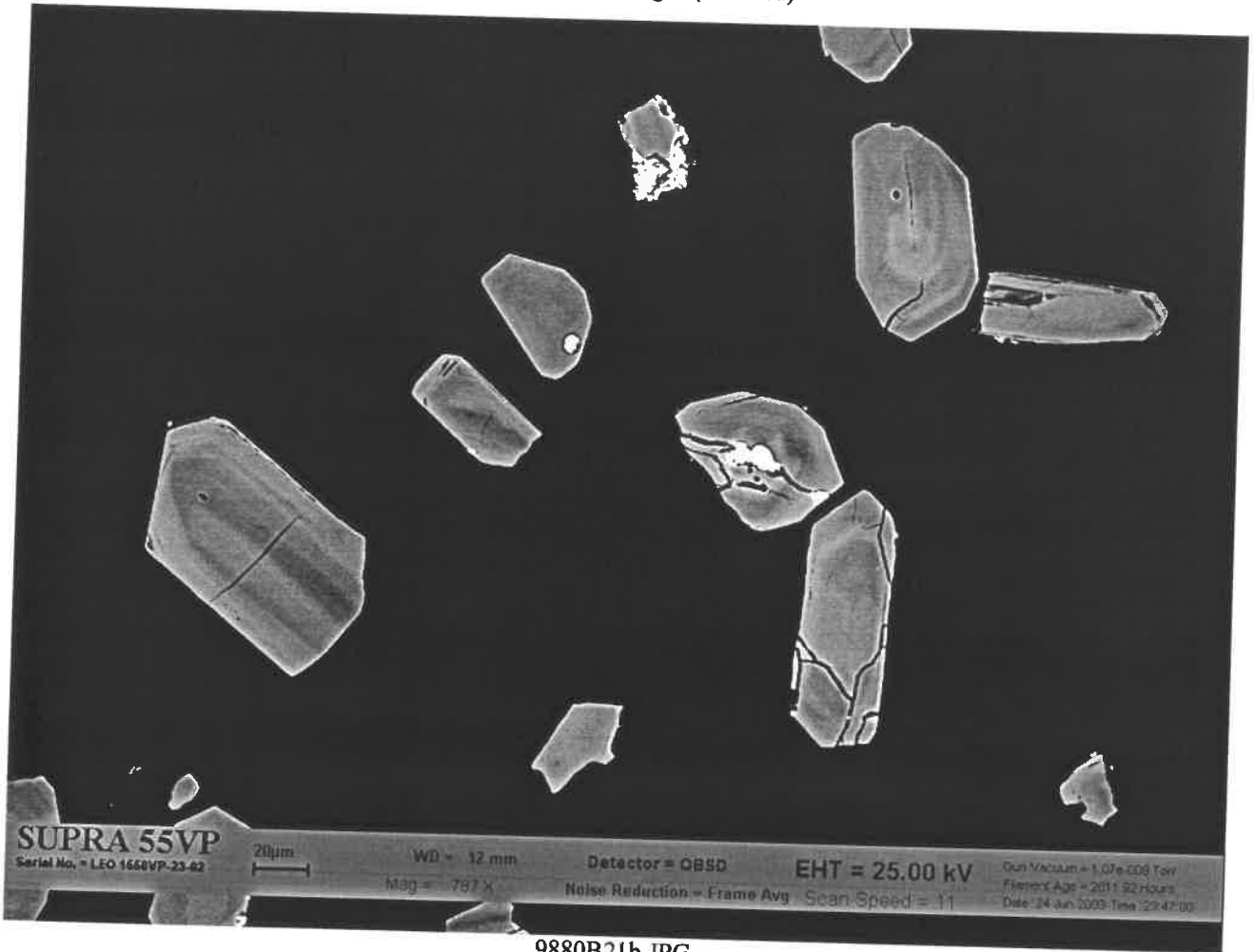
9880B19c.JPG



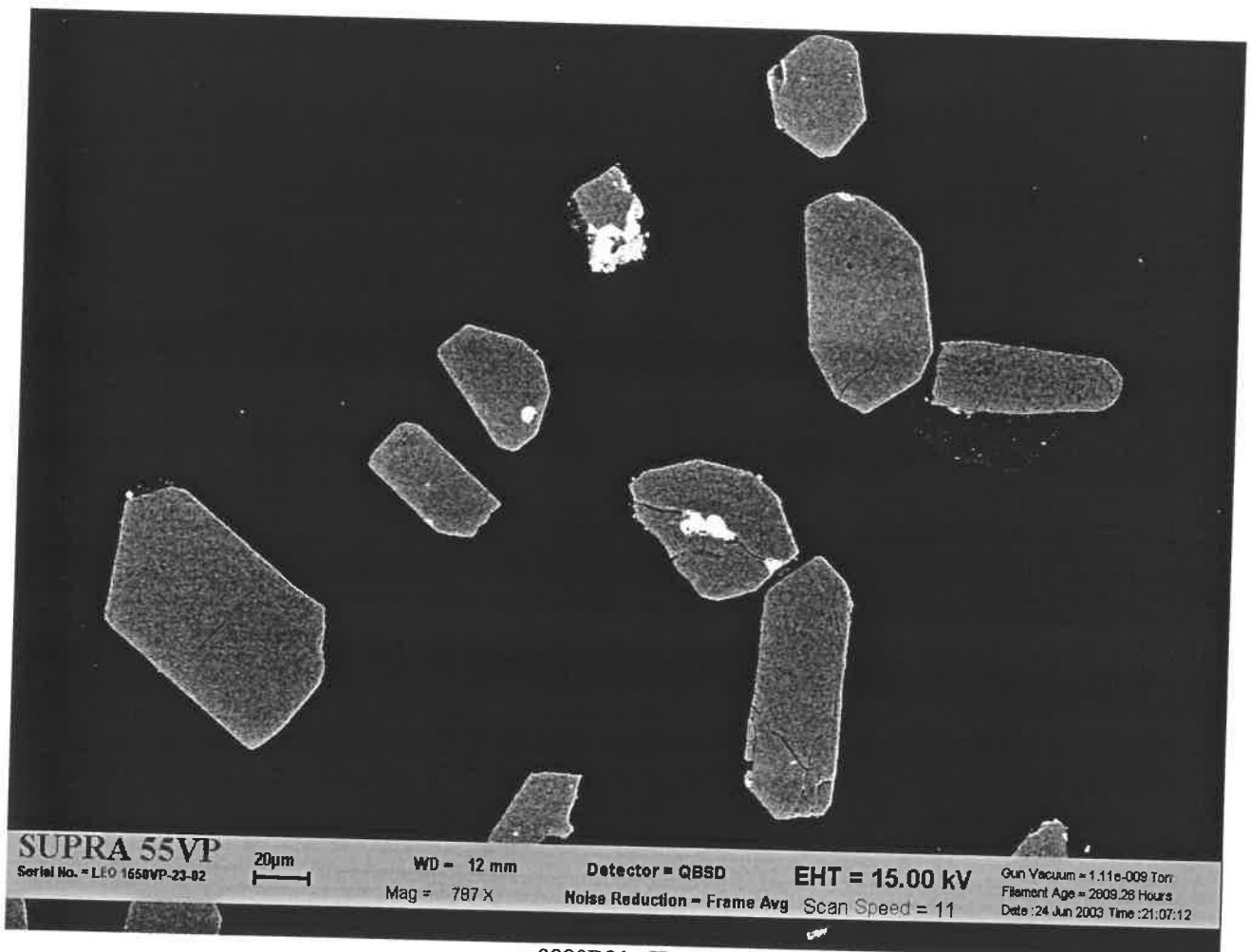
9880B20b.JPG



9880B20c.JPG



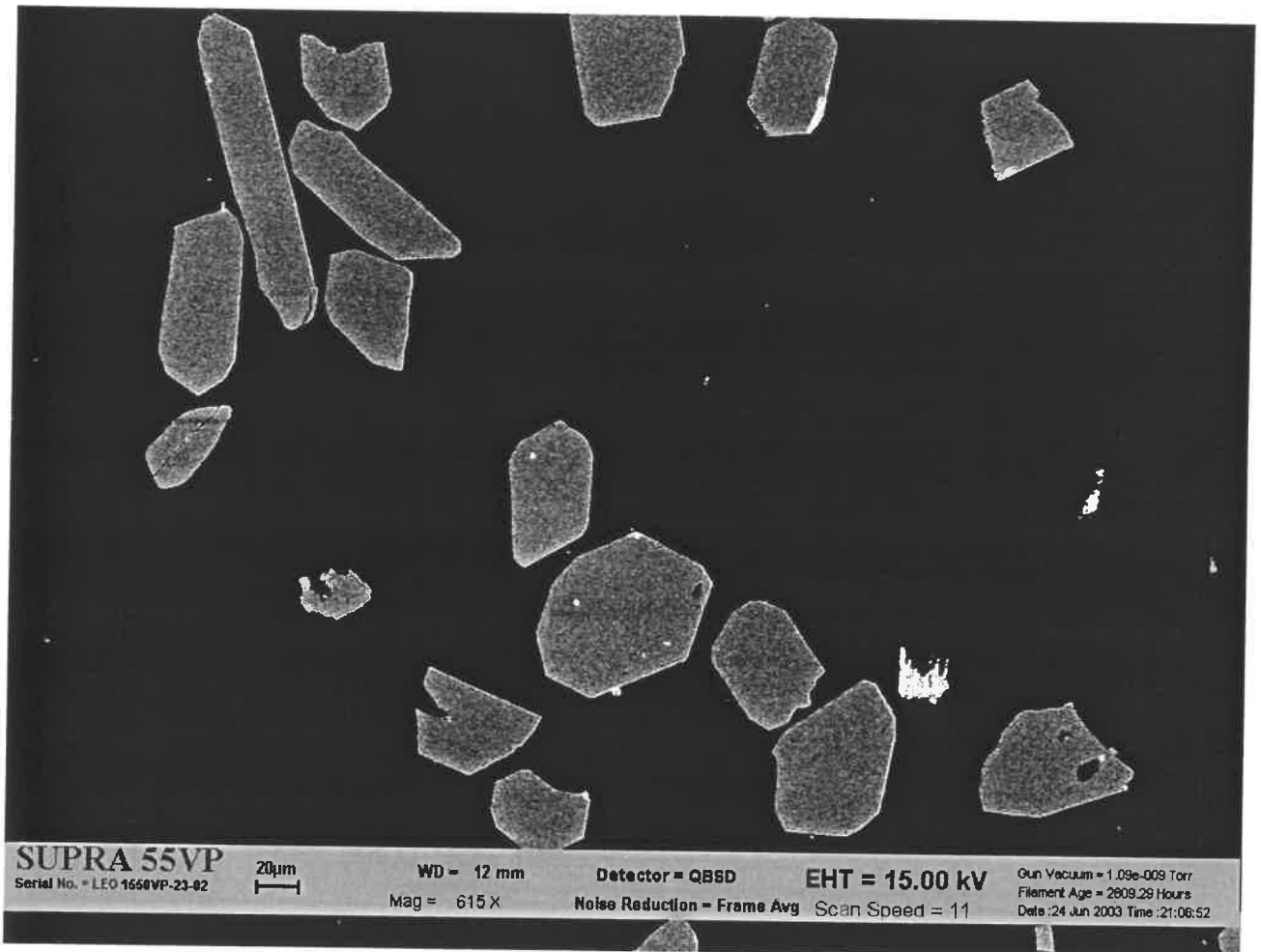
9880B21b.JPG



9880B21c.JPG



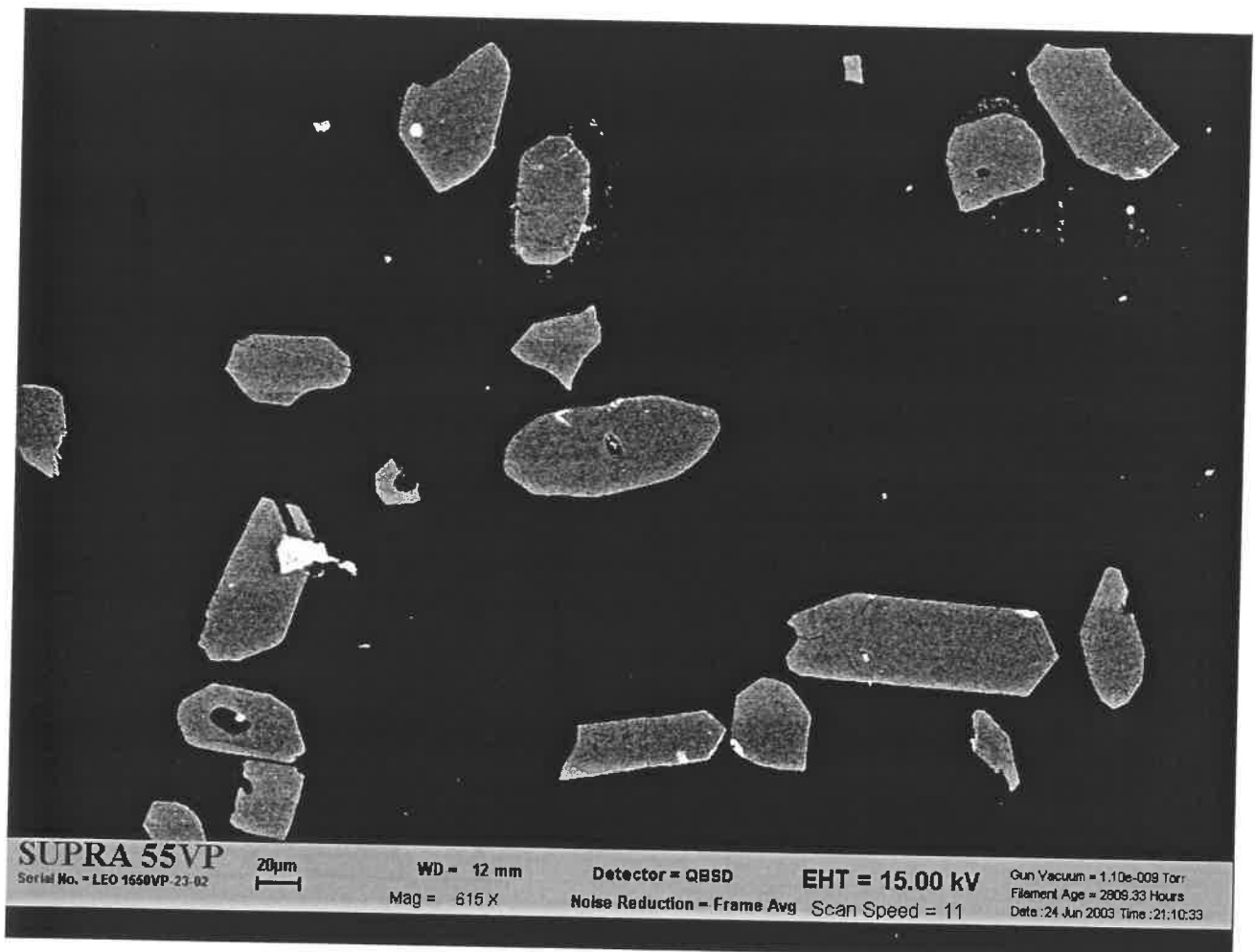
9880B22b.JPG



9880B22c.JPG



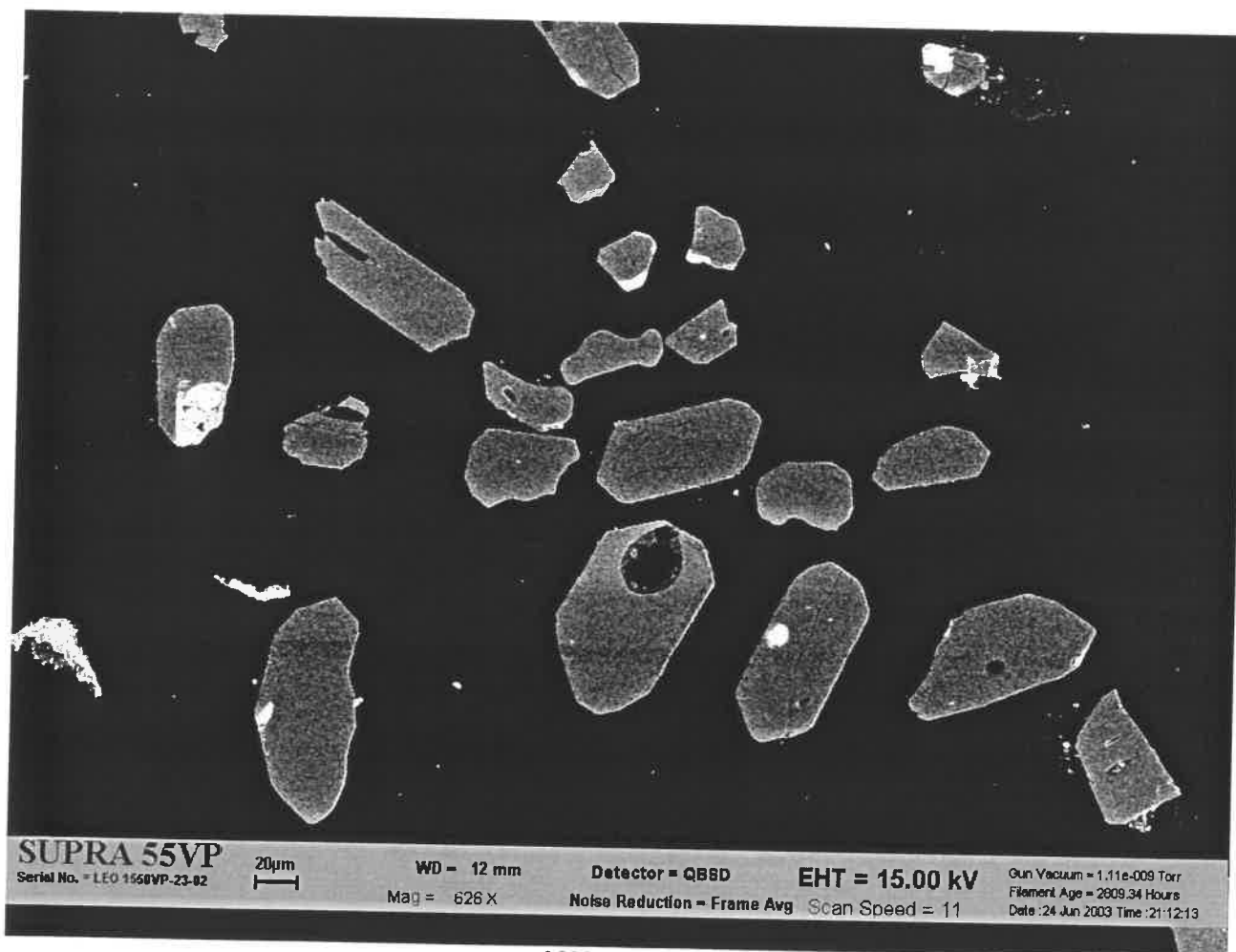
9880B23b.JPG



9880B23c.JPG



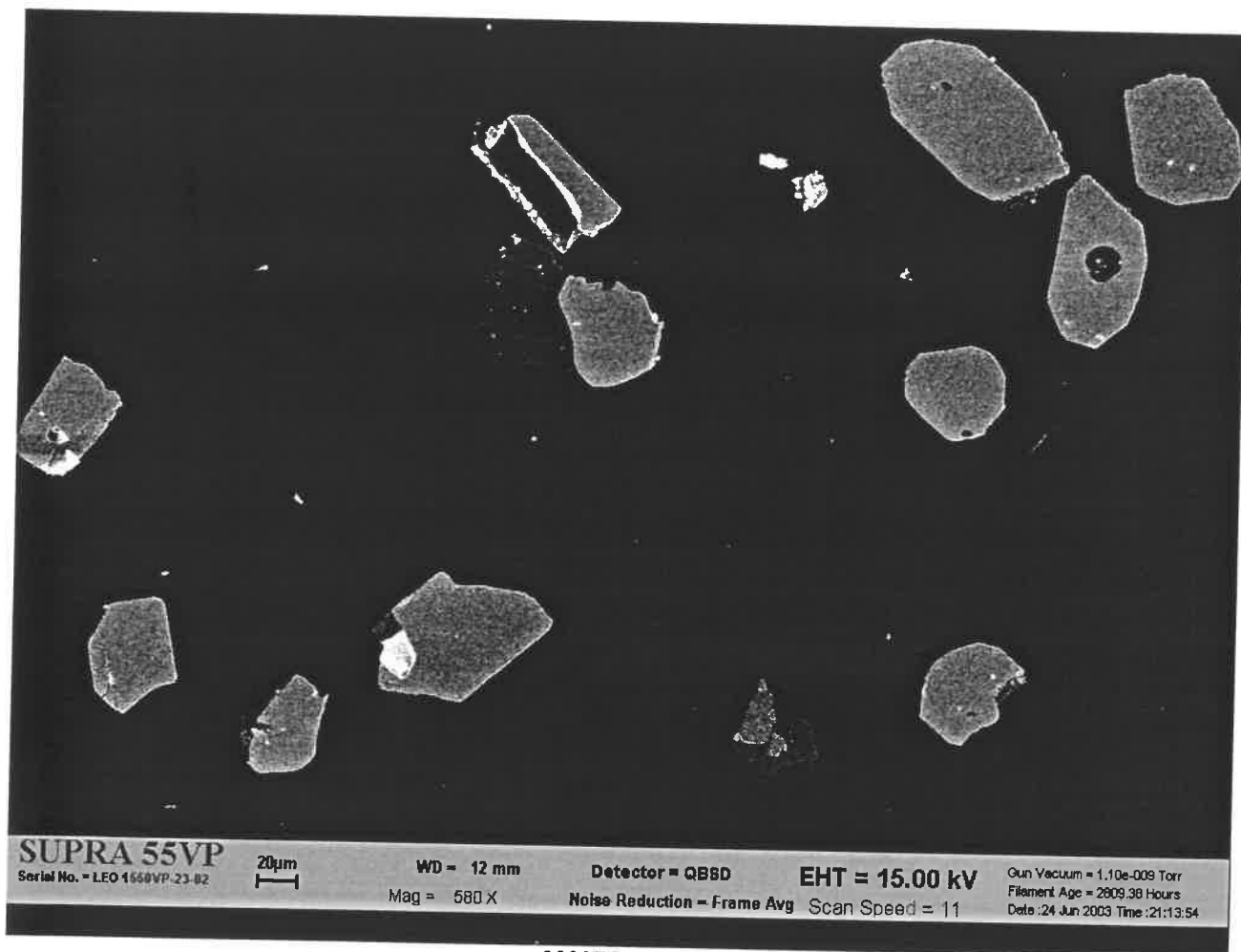
9880B24b.JPG



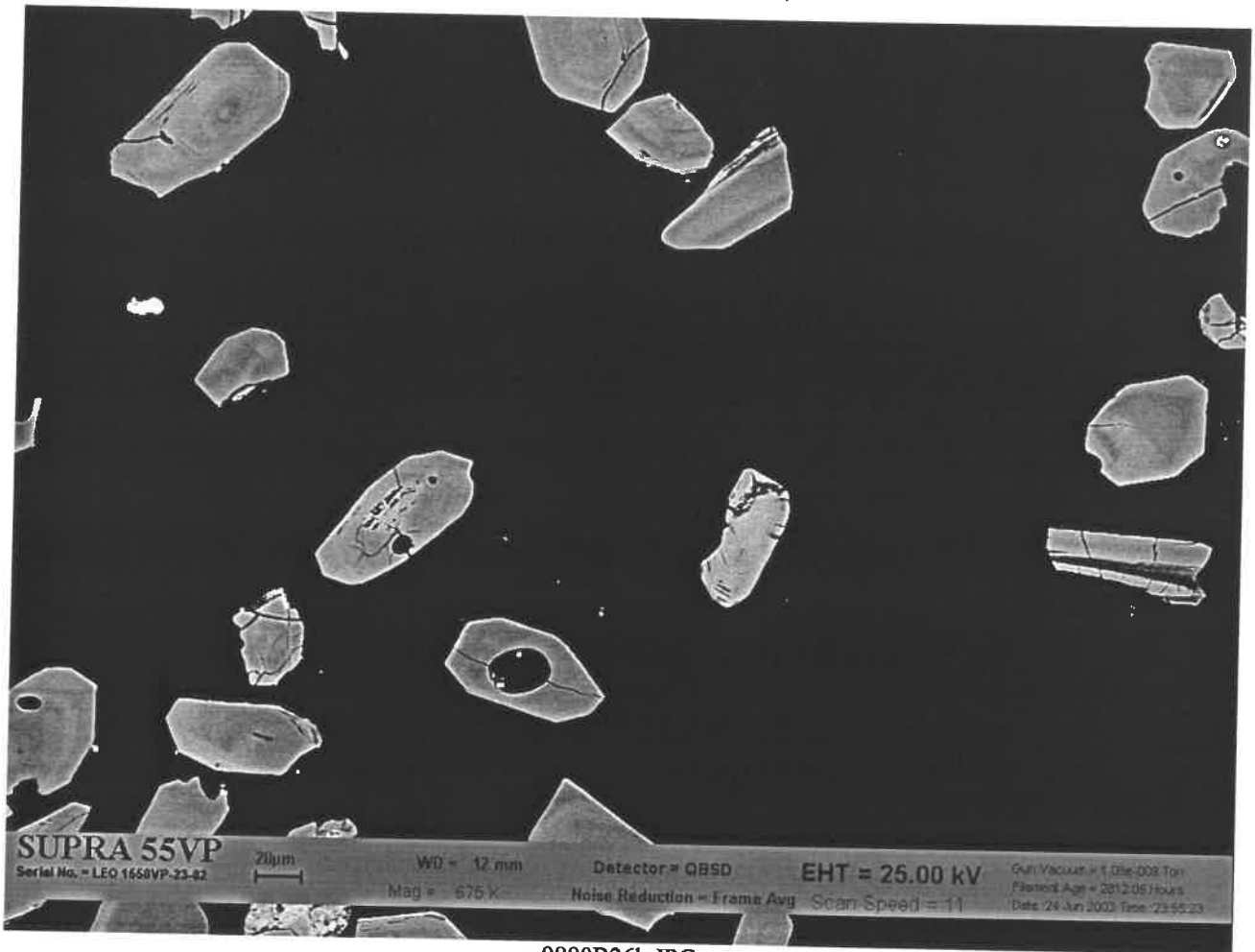
9880B24c.JPG



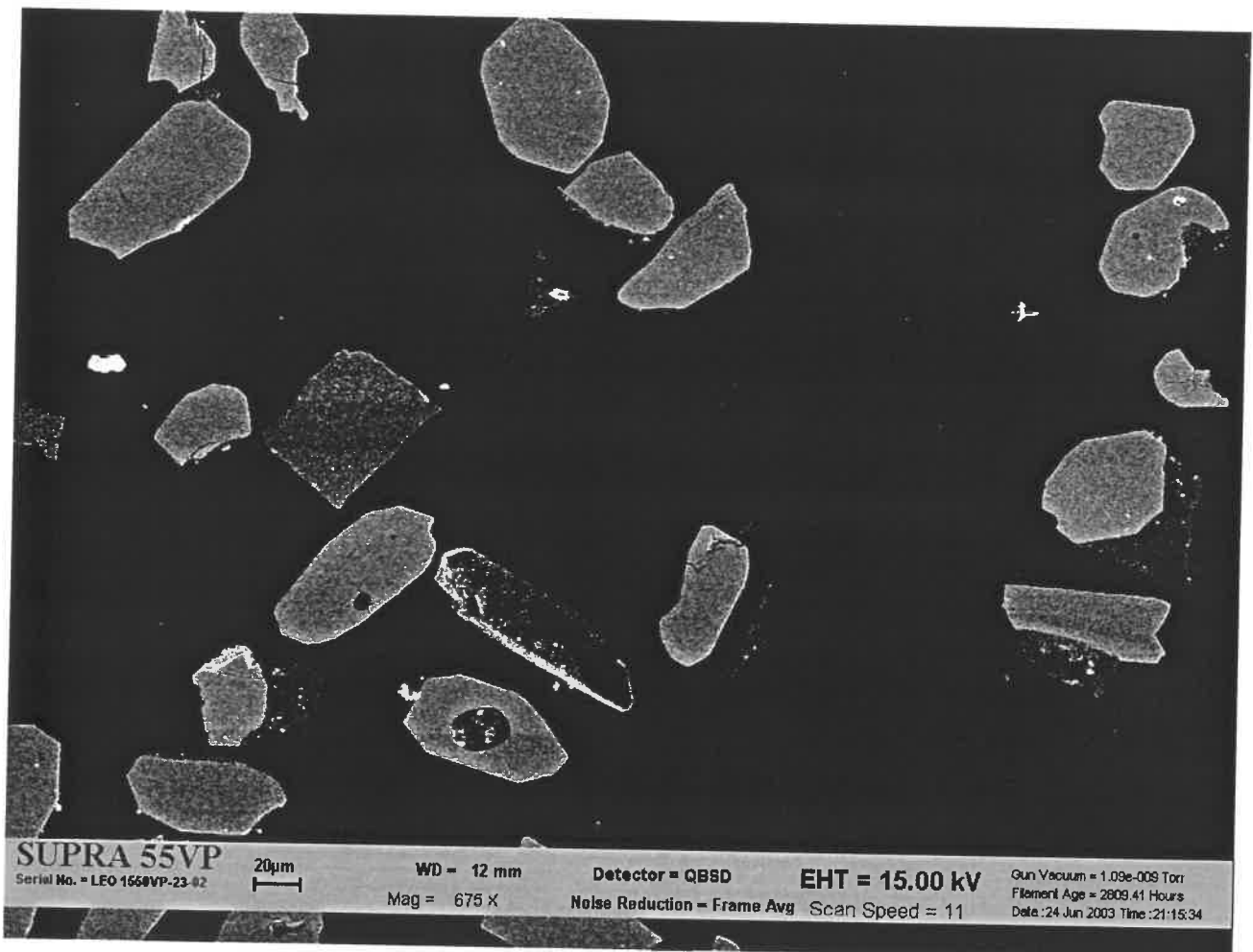
9880B25b.JPG



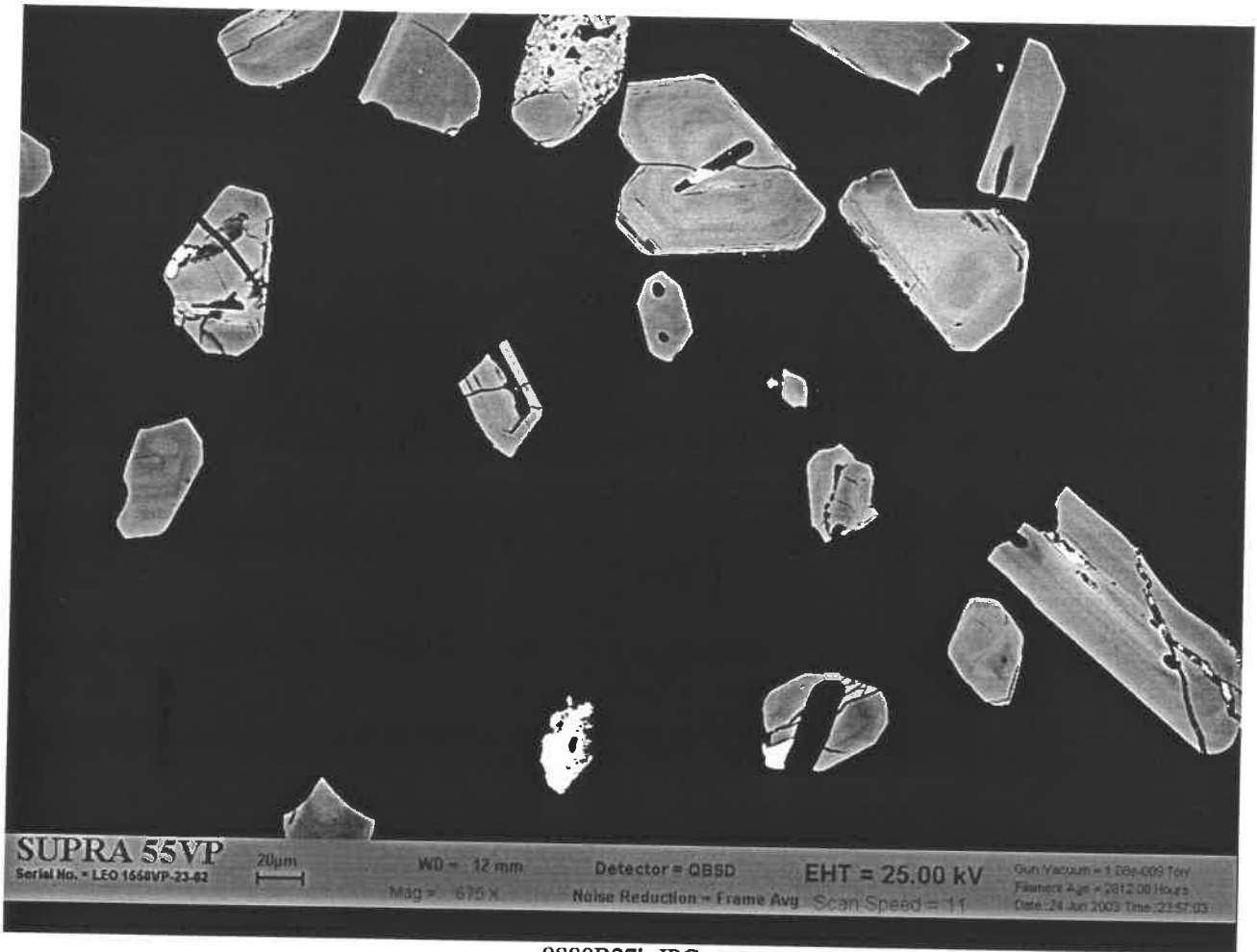
9880B25c.JPG



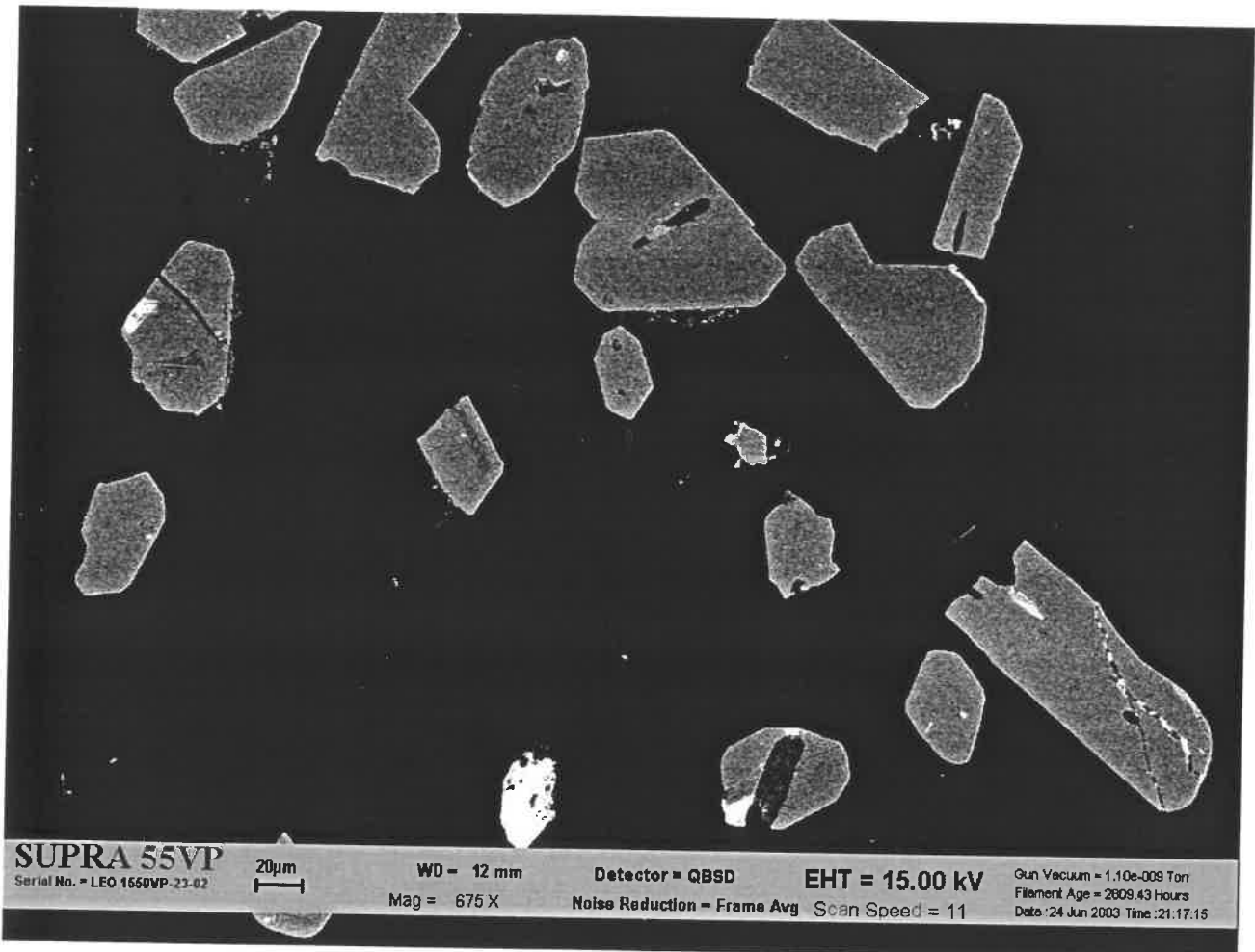
9880B26b.JPG



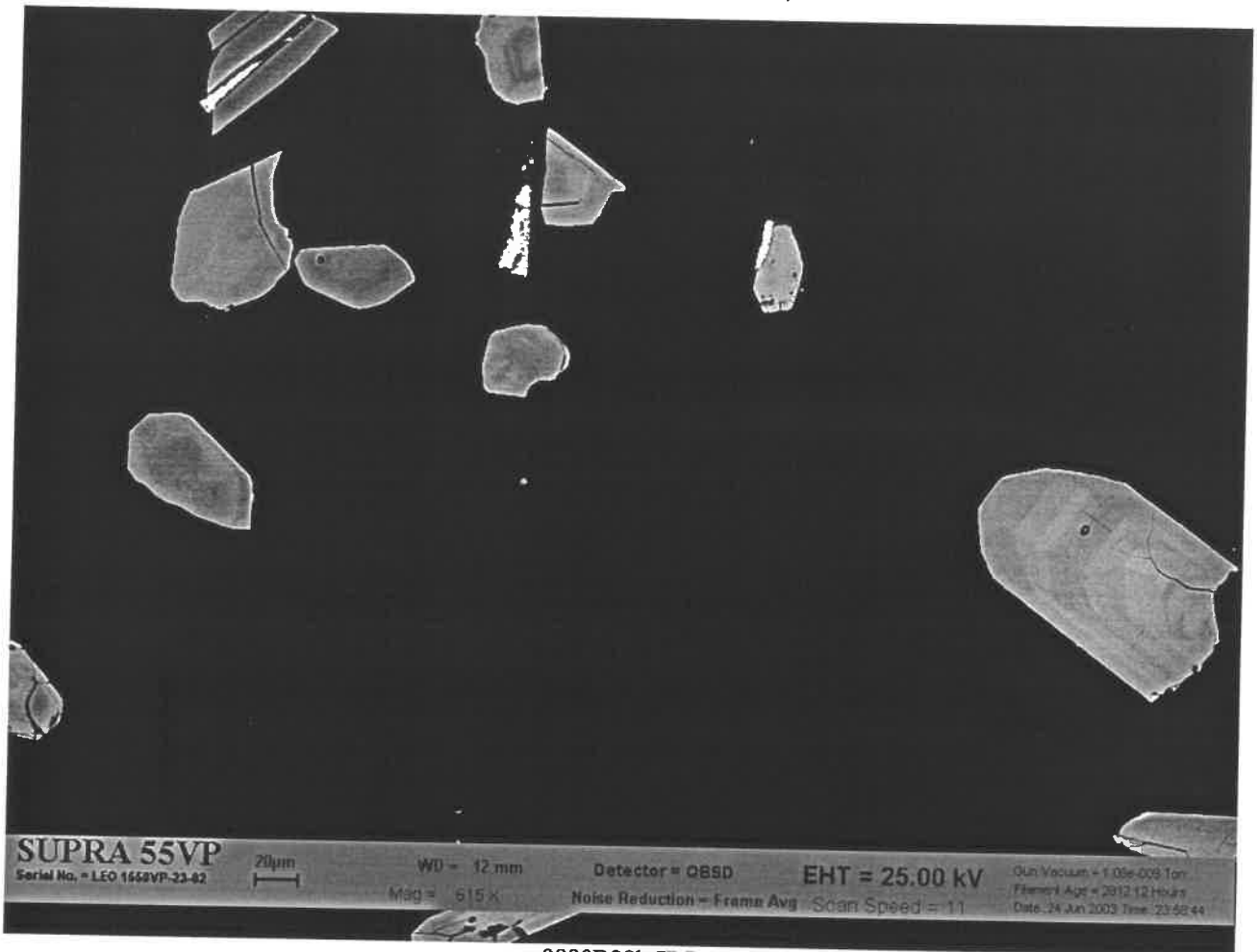
9880B26c.JPG



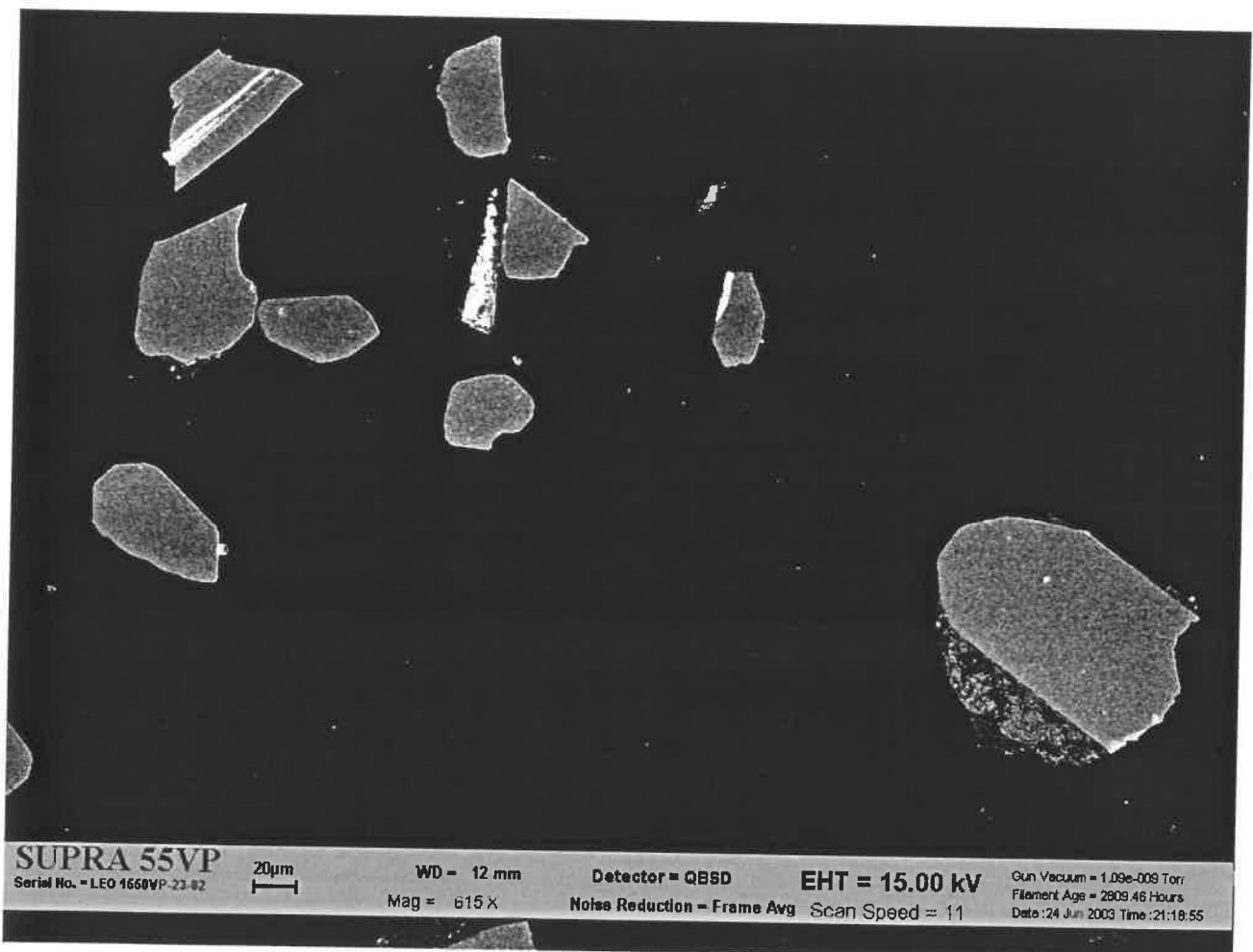
9880B27b.JPG



9880B27c.JPG



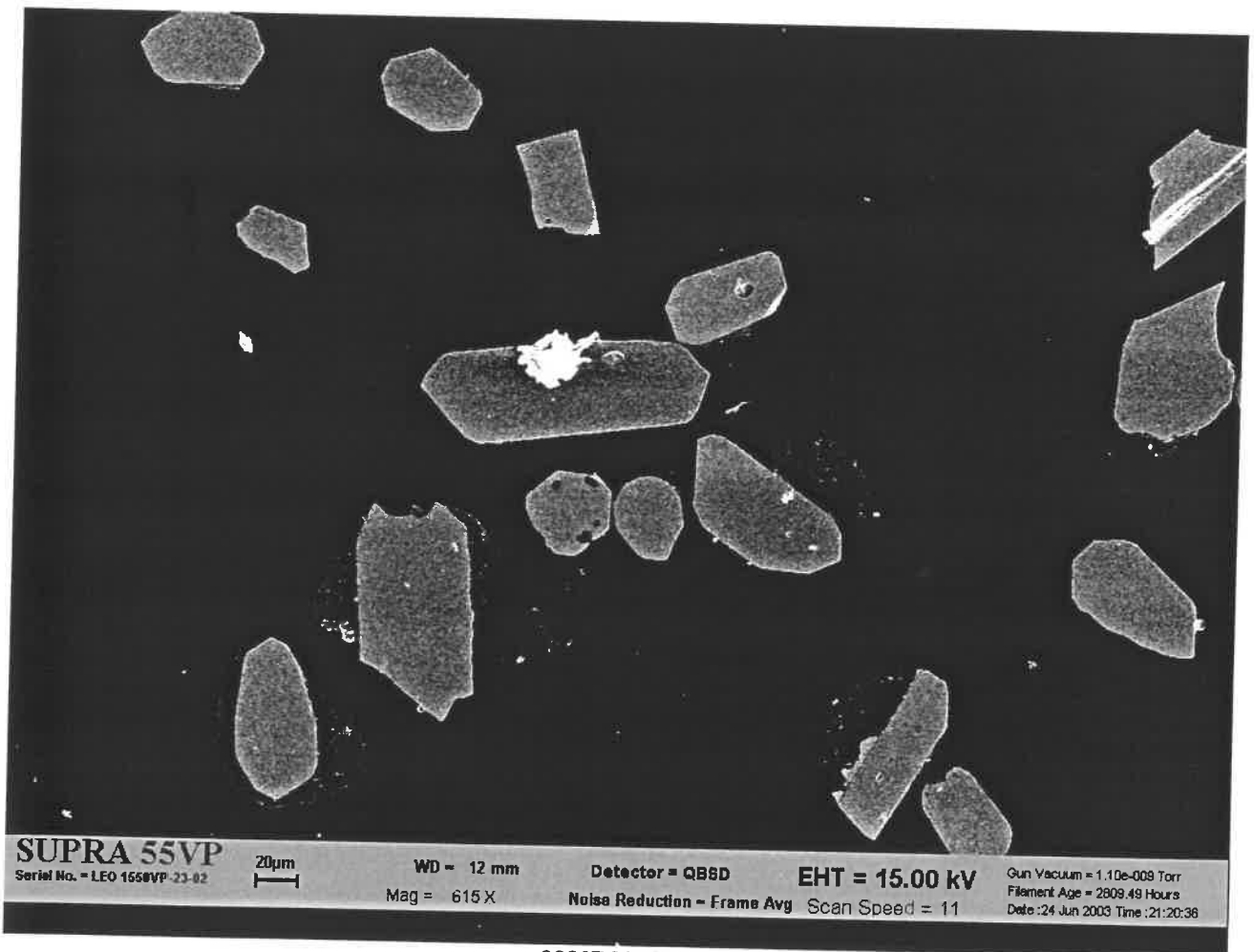
9880B28b.JPG



9880B28c.JPG



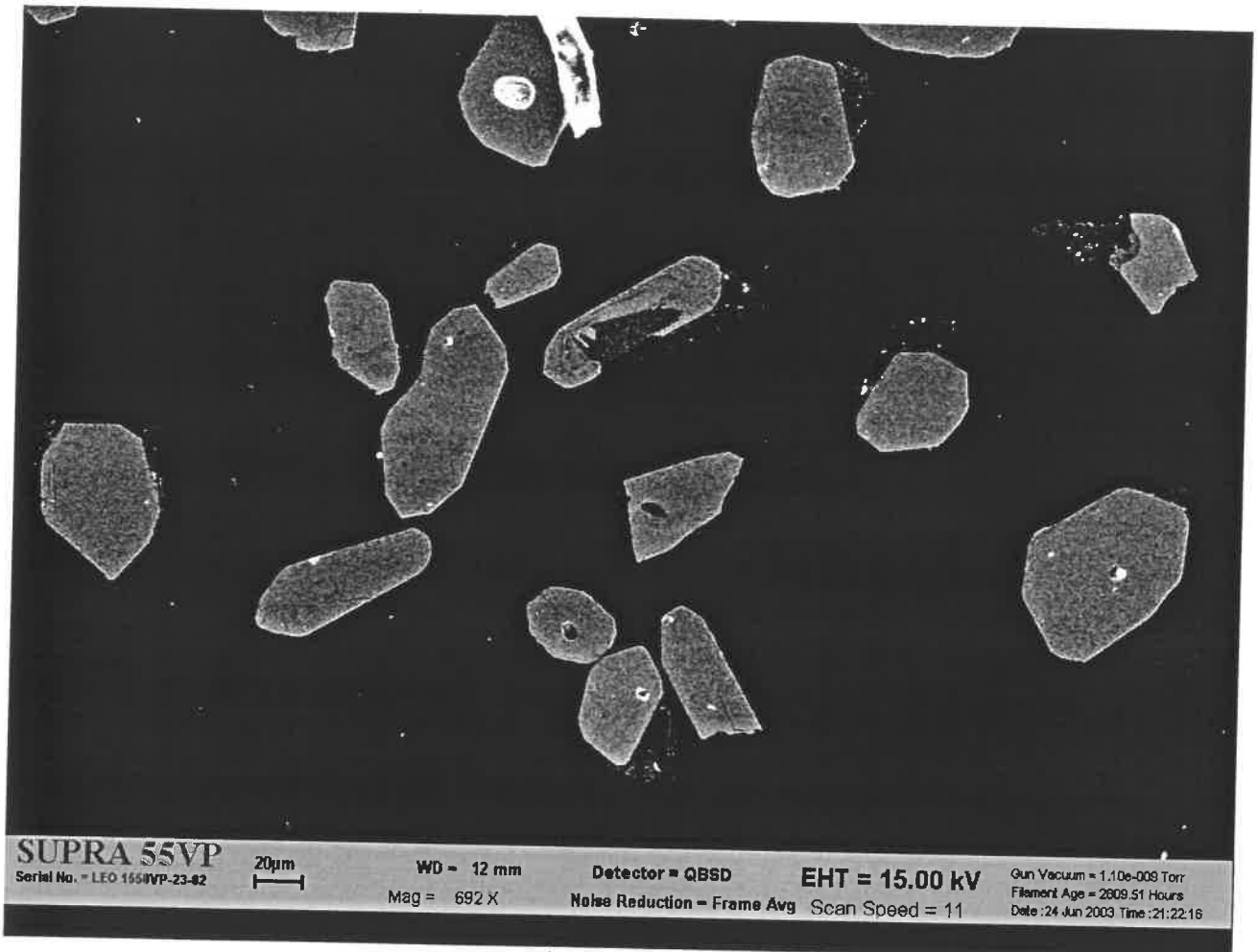
9880B29b.JPG



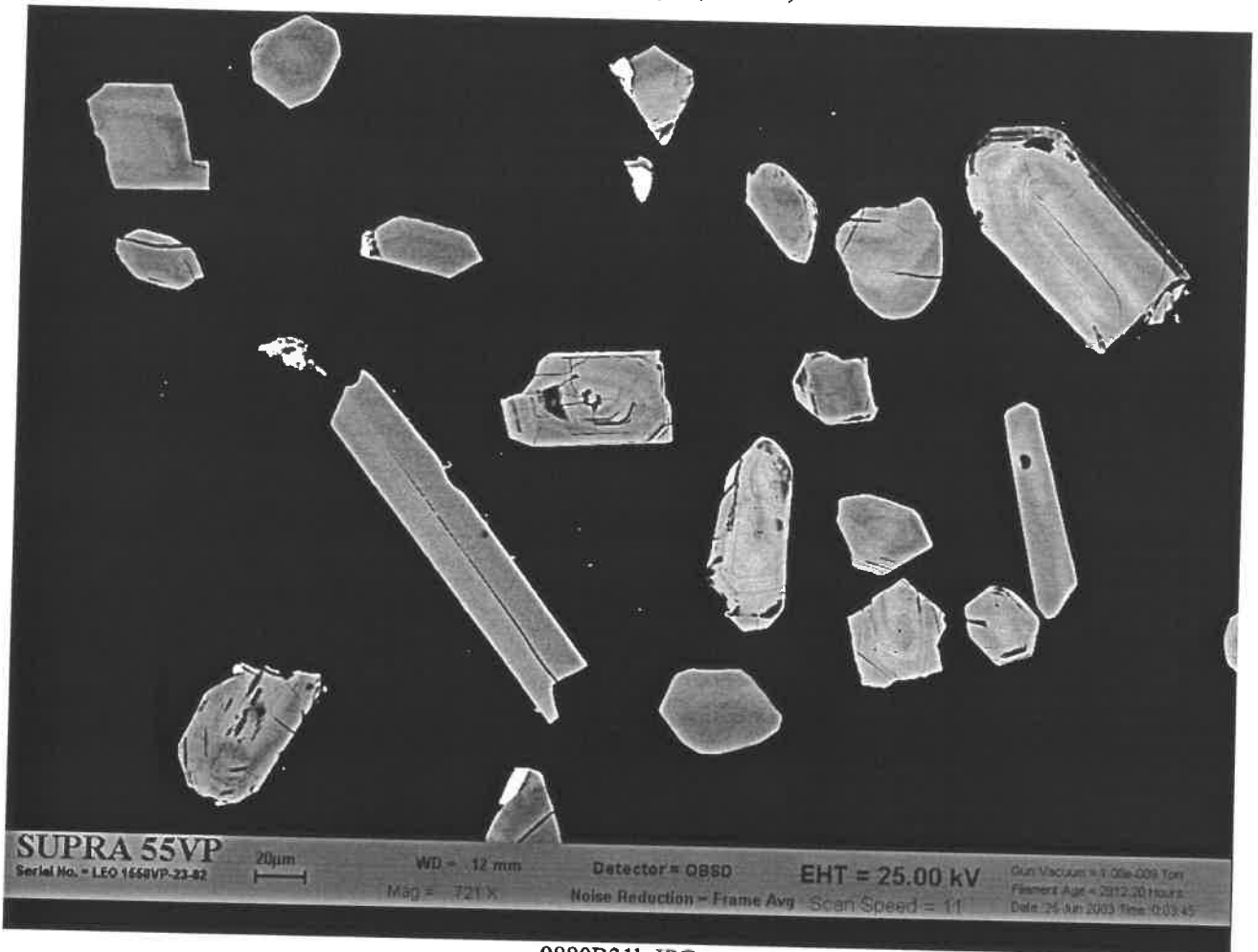
9880B29c.JPG



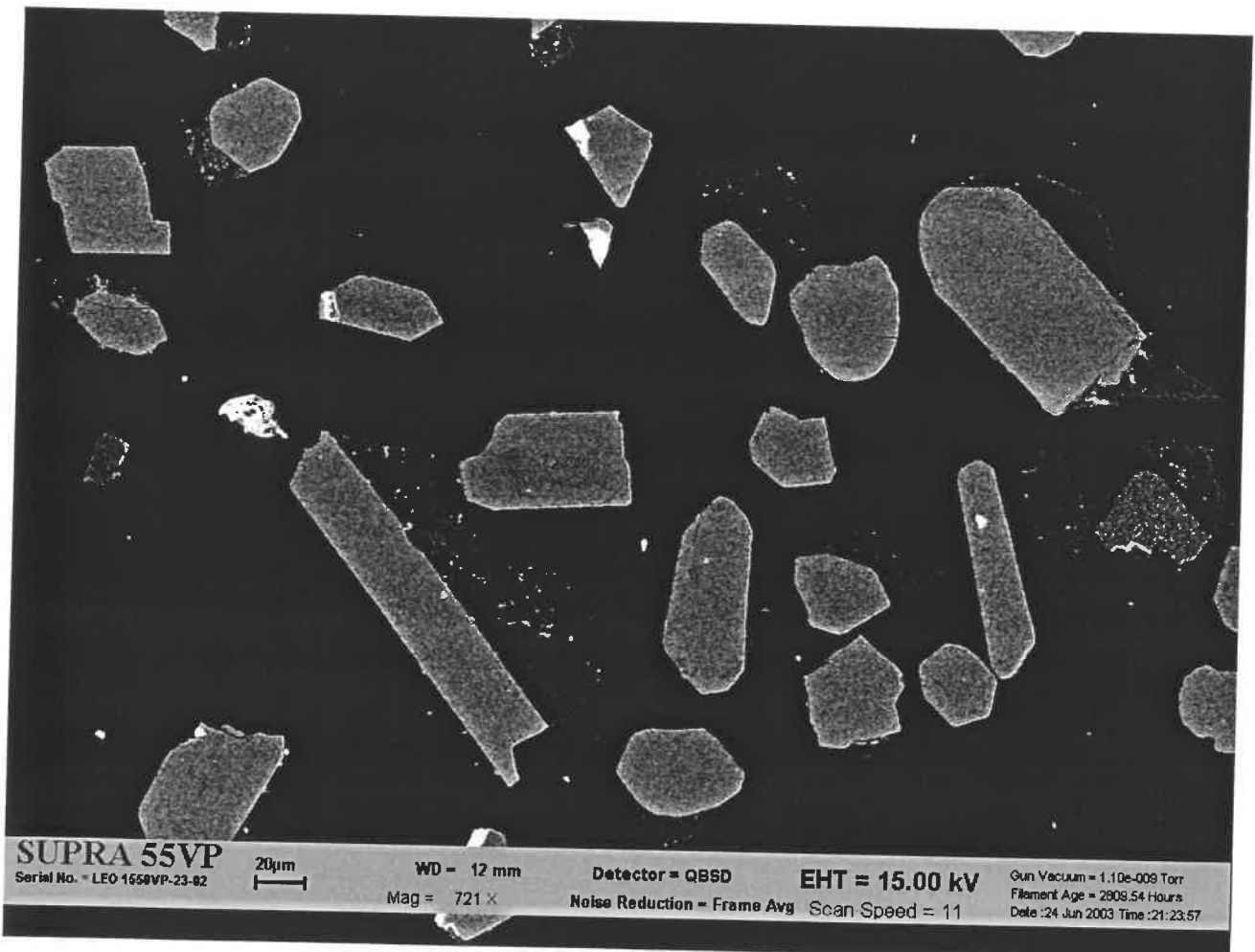
9880B30b.JPG



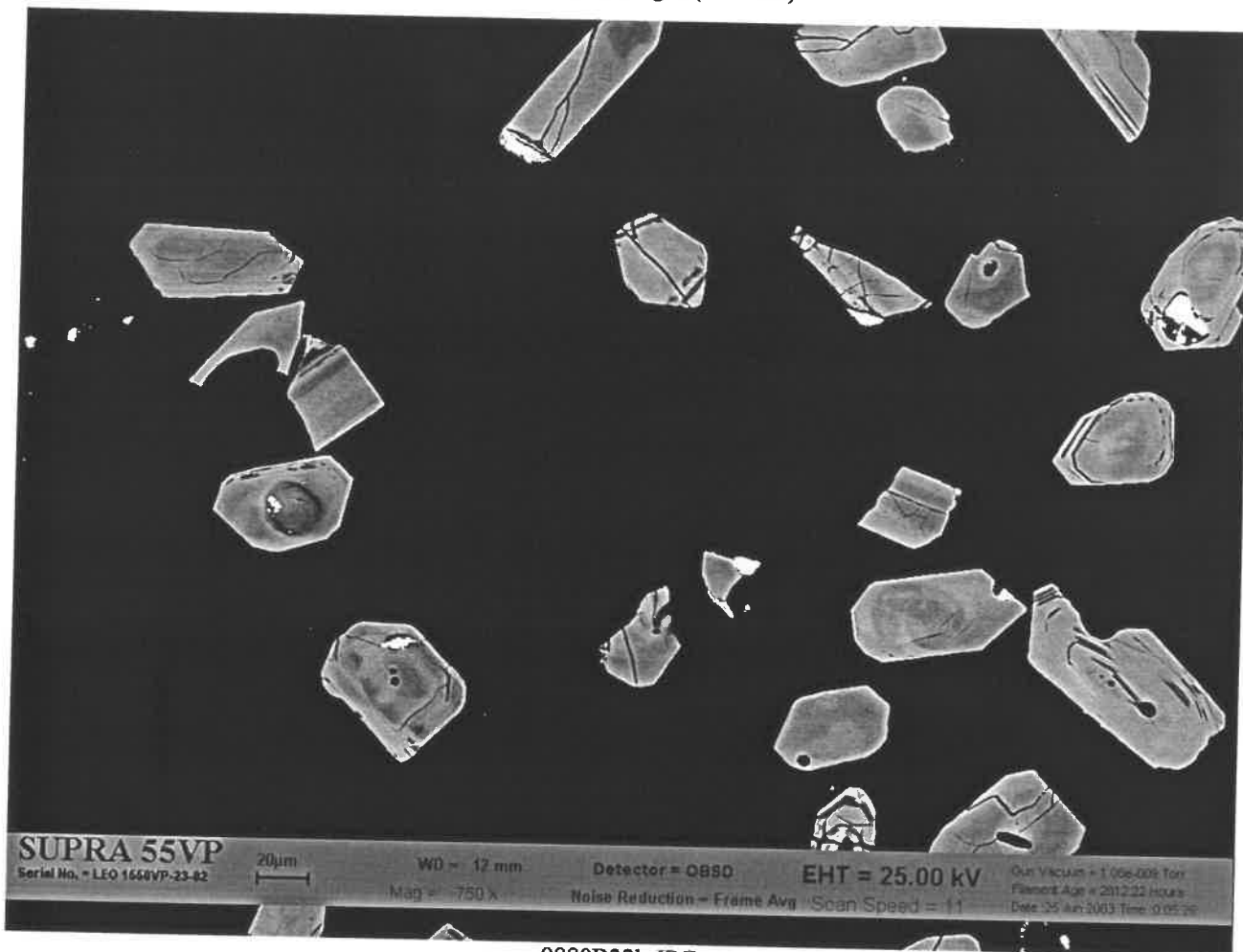
9880B30c.JPG



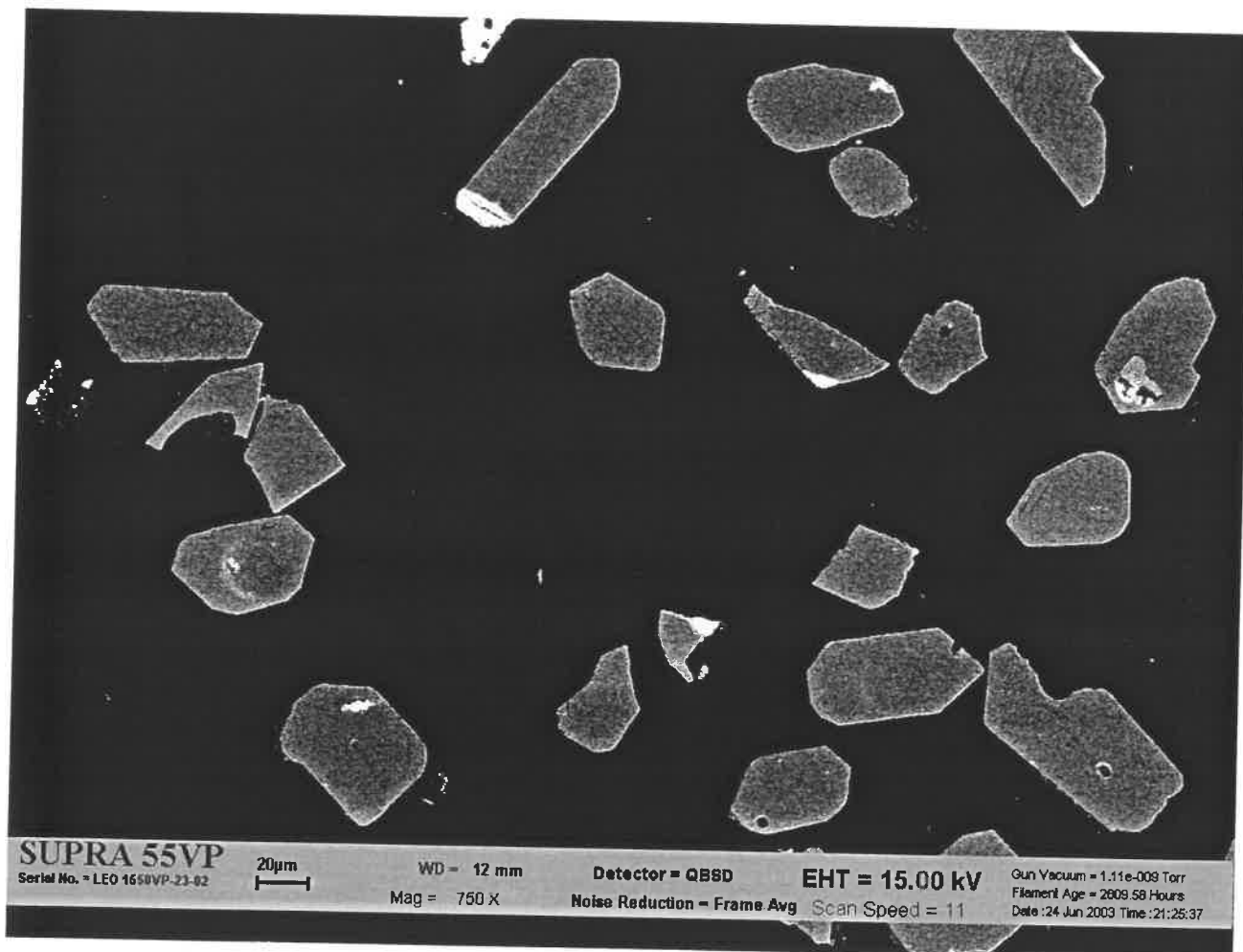
9880B31b.JPG



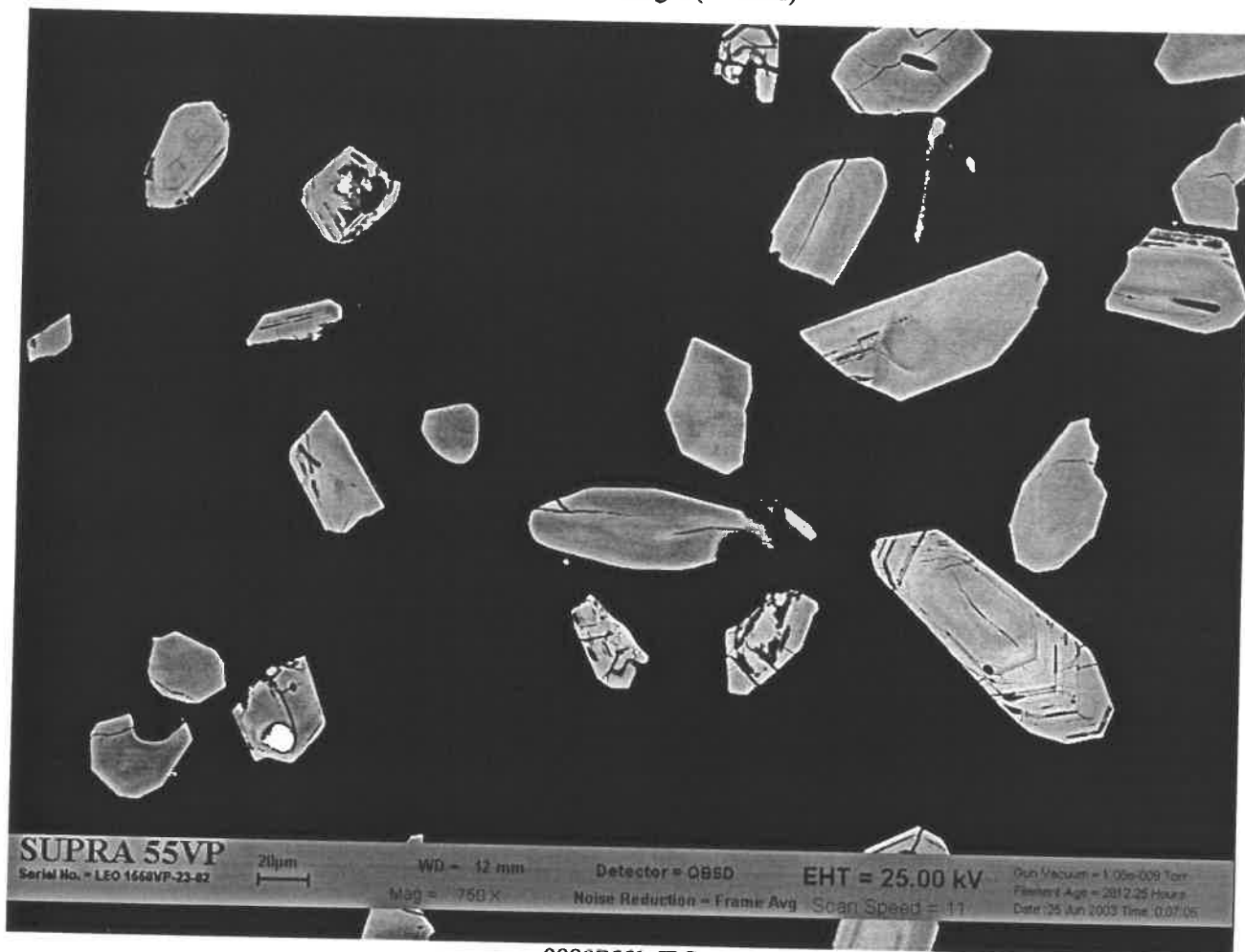
9880B31c.JPG



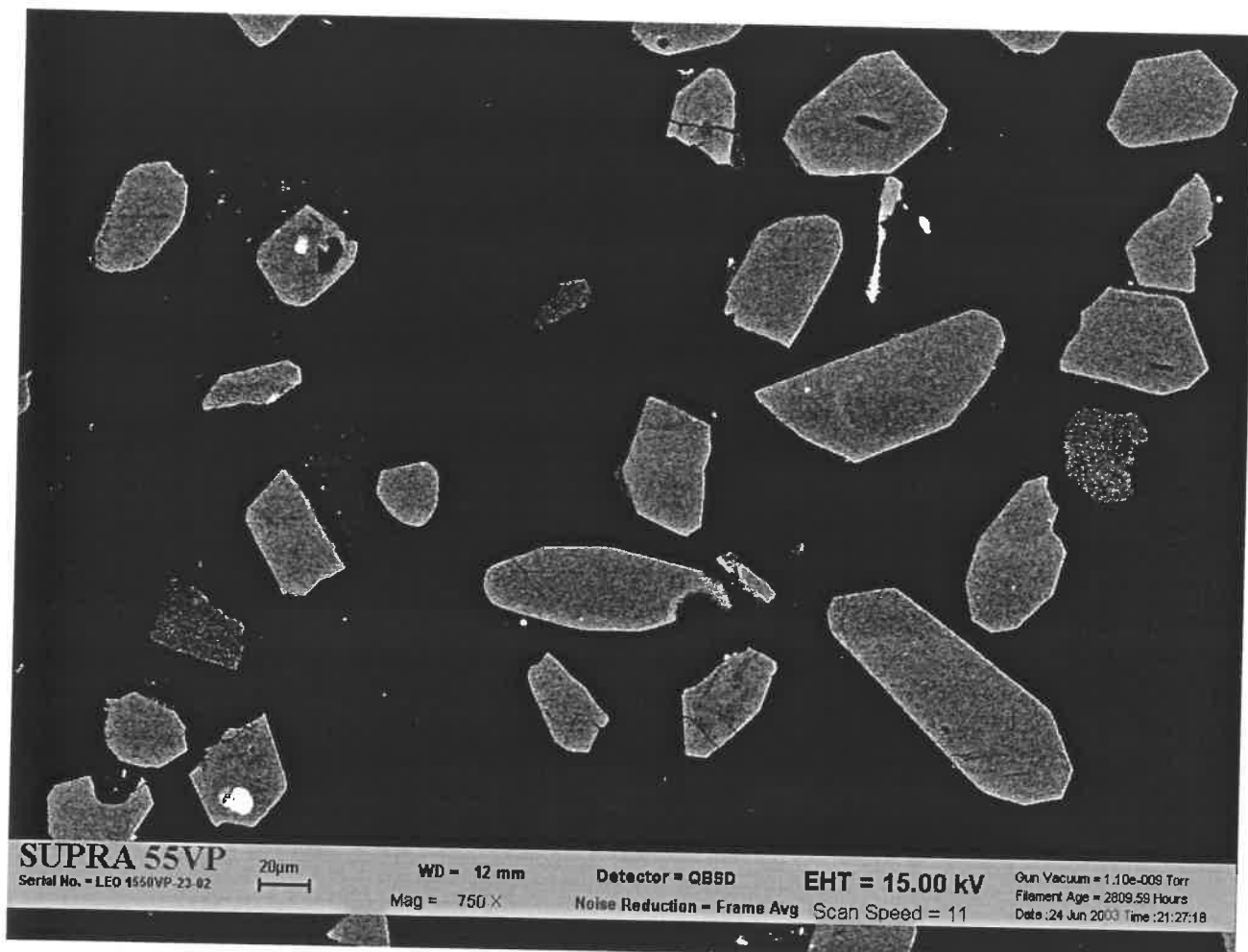
9880B32b.JPG



9880B32c.JPG



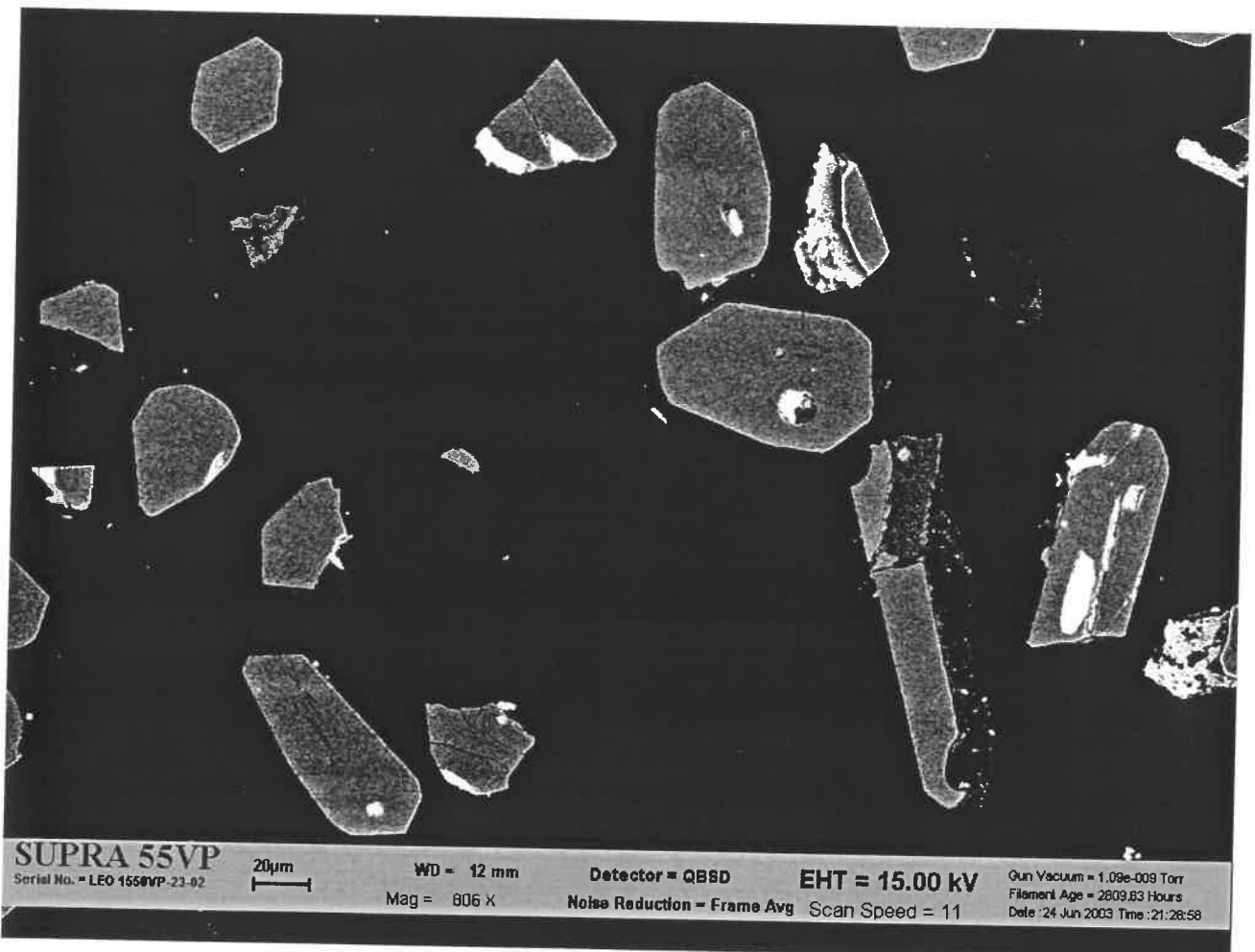
9880B33b.JPG



9880B33c.JPG



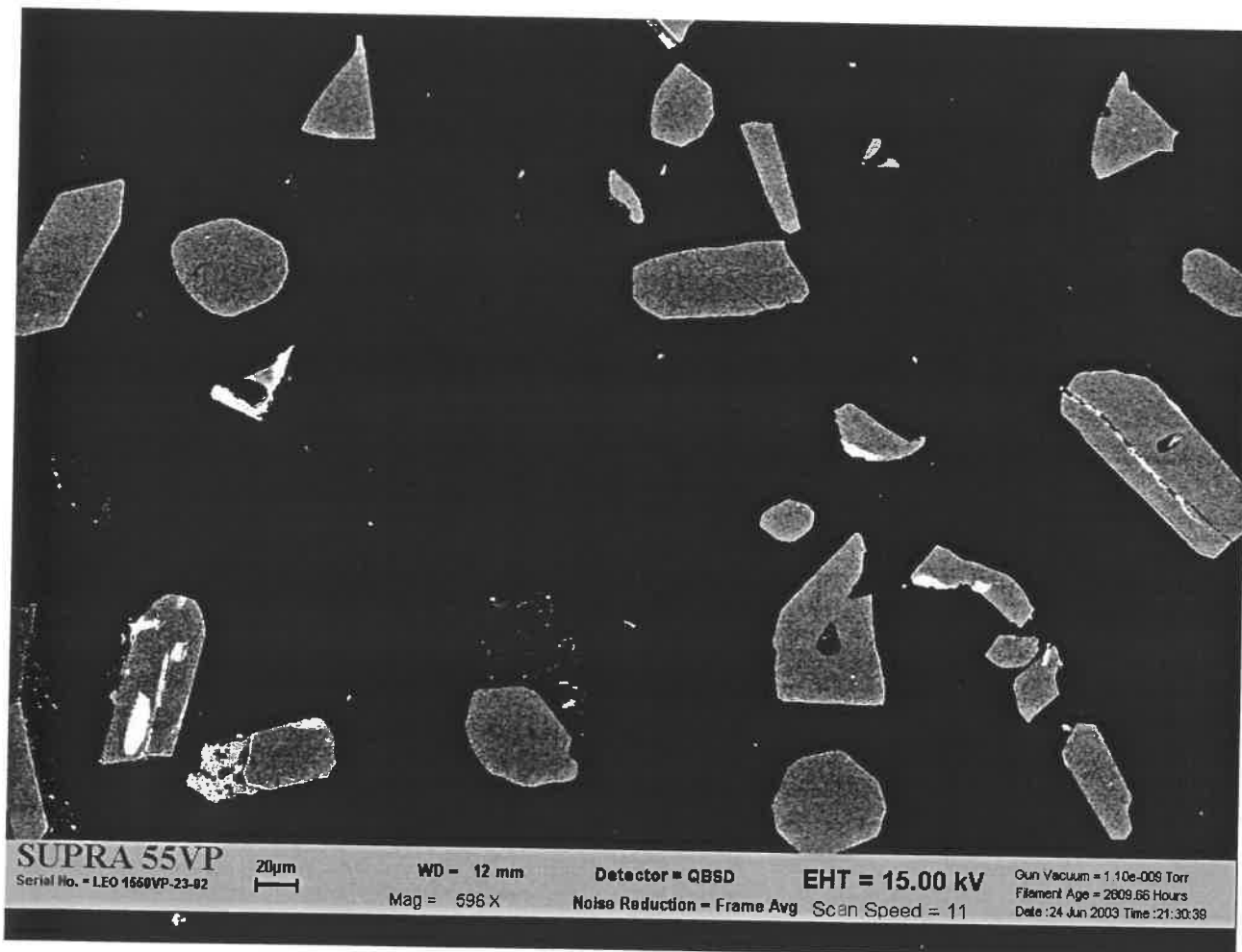
9880B34b.JPG



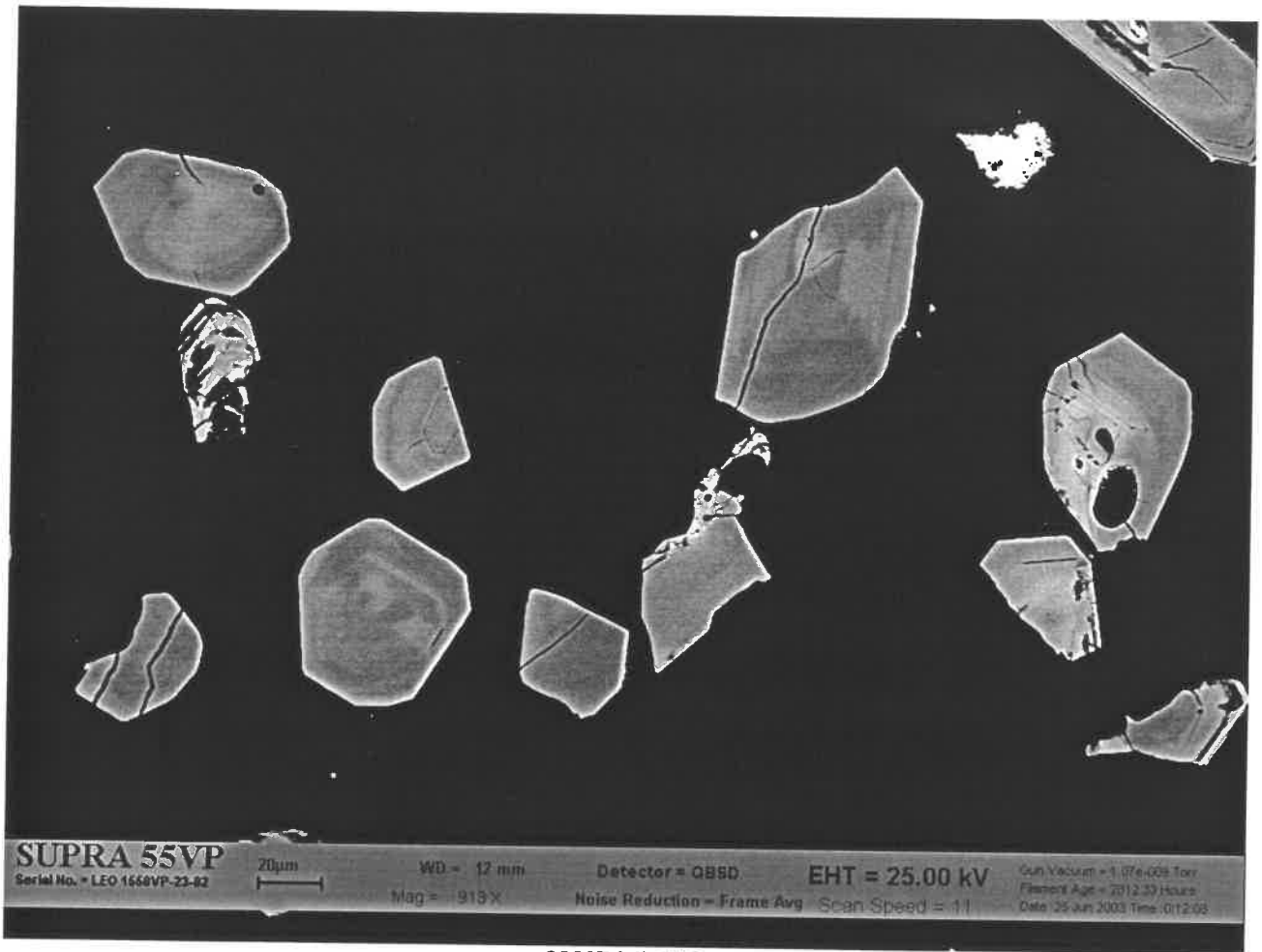
9880B34c.JPG



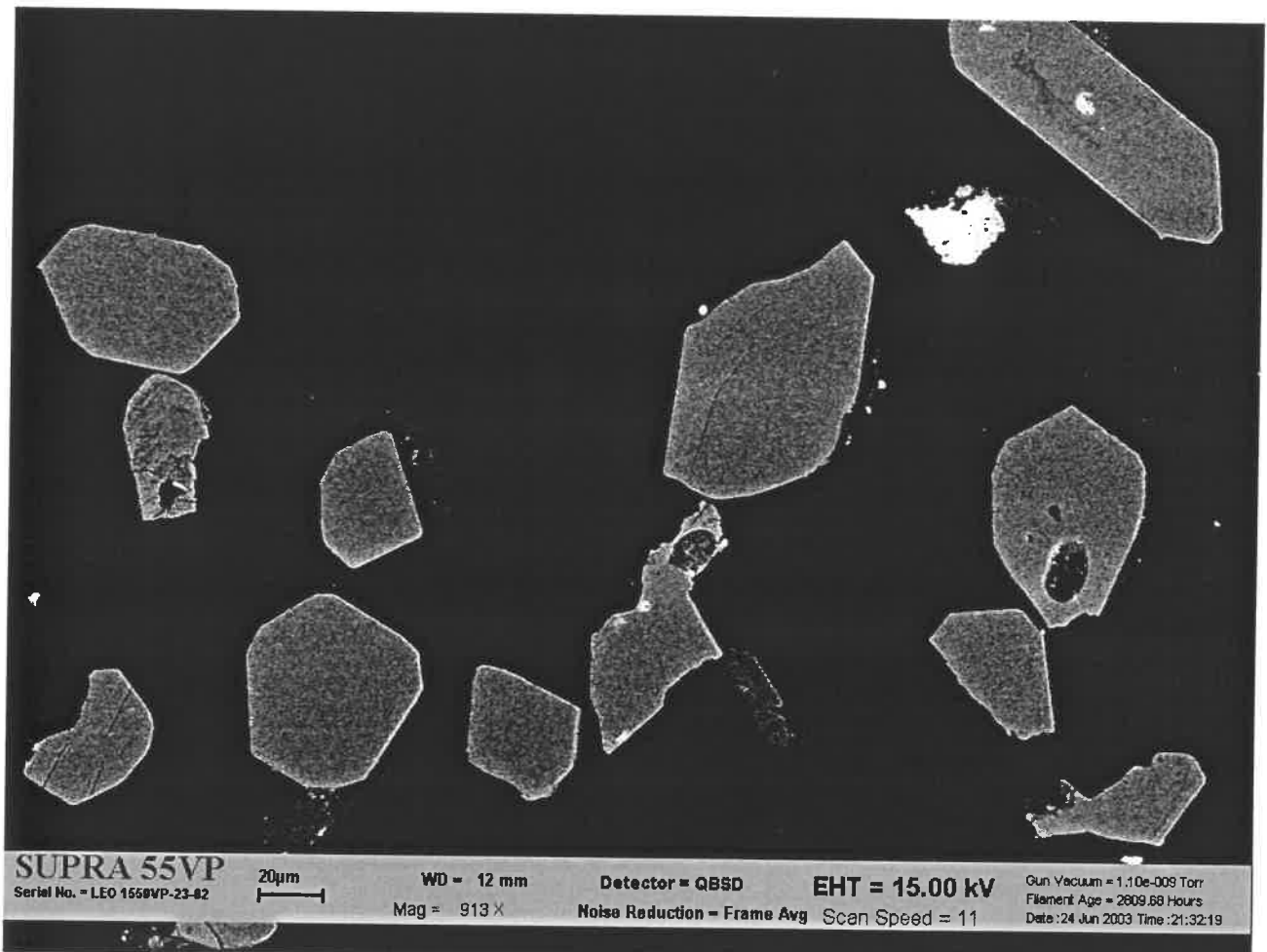
9880B35b.JPG



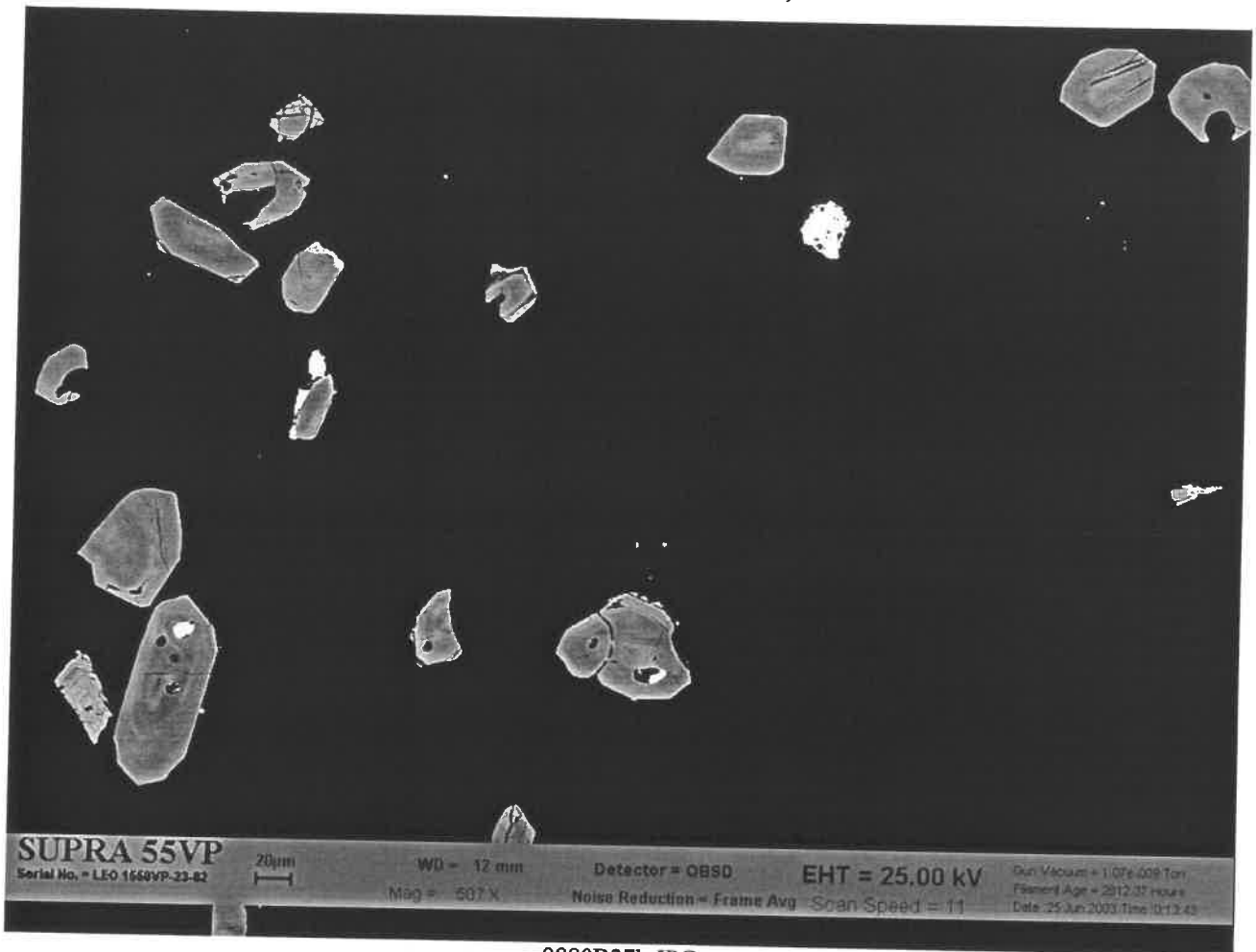
9880B35c.JPG



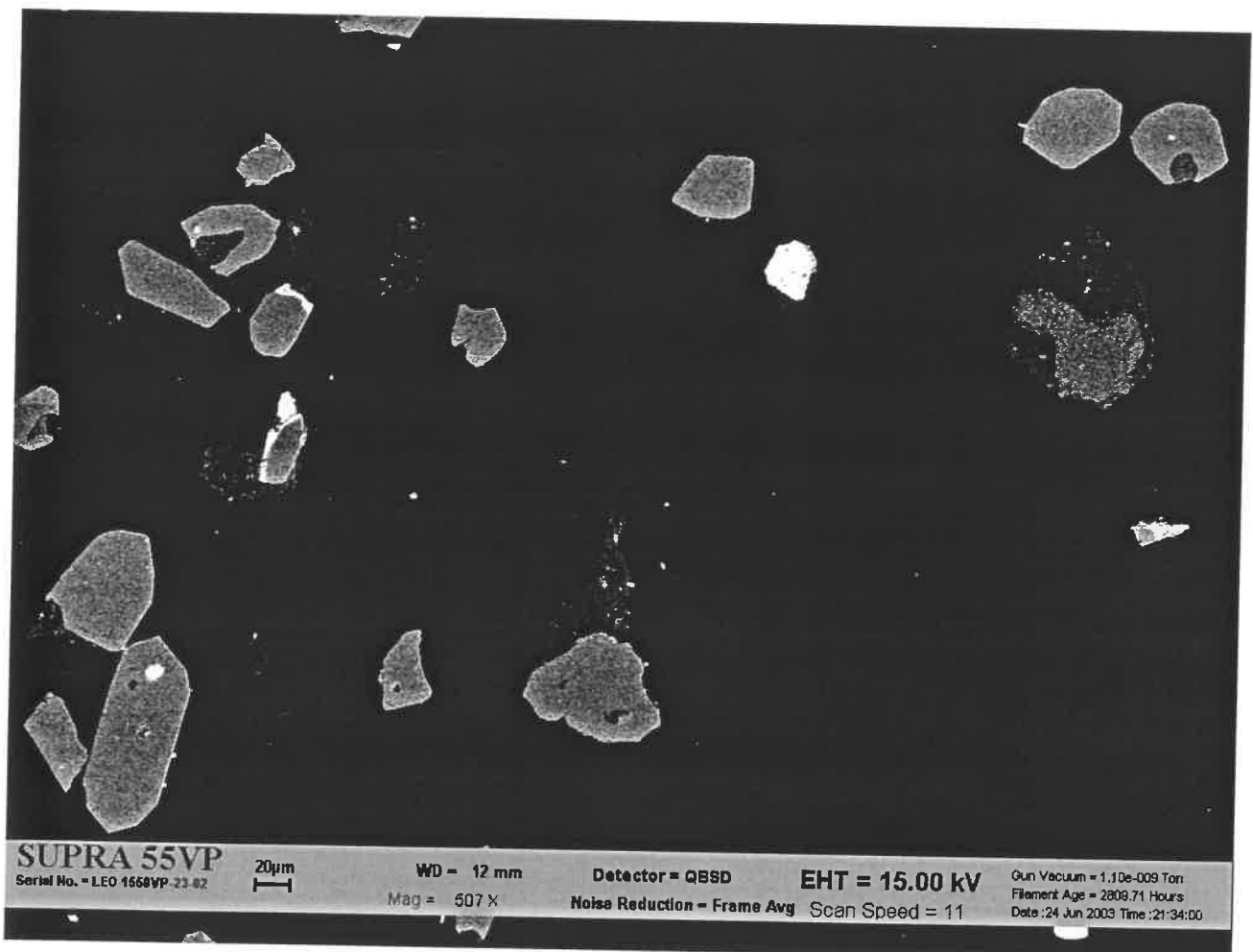
9880B36b.JPG



9880B36c.JPG



9880B37b.JPG



9880B37c.JPG



SUPRA 55VP
Serial No. = LEO 1550VP-23-02

20µm
┌───┐

WD = 12 mm
Mag = 825 X

Detector = QBSD
Noise Reduction = Frame Avg

EHT = 25.00 kV
Scan Speed = 11

Gun Vacuum = 1.06e-009 Torr
Filament Age = 2610.37 Hours
Date : 24 Jun 2003 Time : 22:13:52

9880B38c.JPG