

1-1 (937)  
1-2 (246)  
1b- (330)



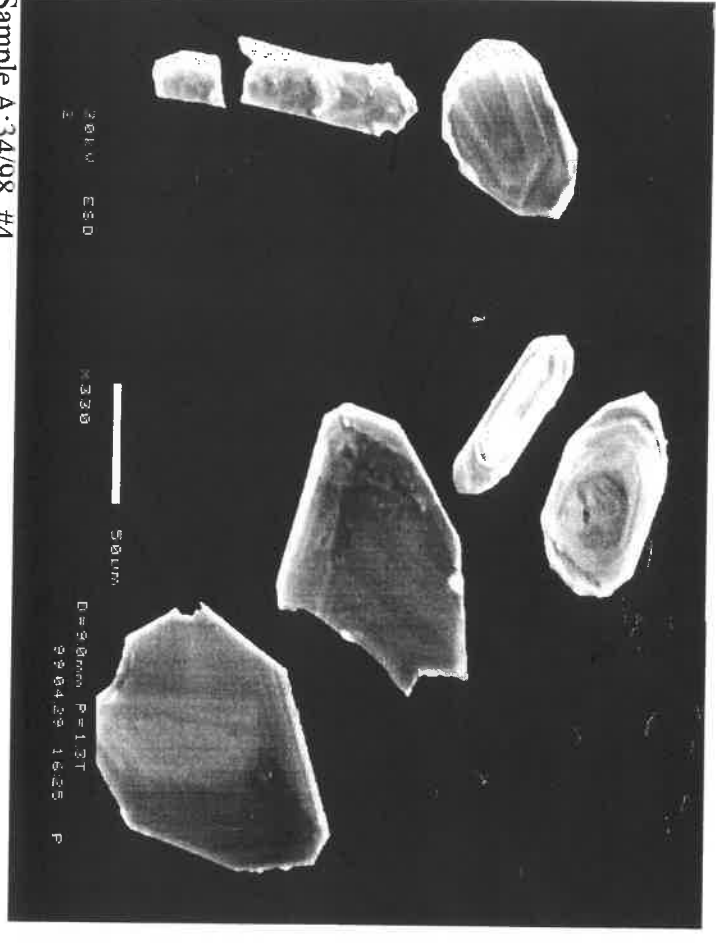
Sample A:34/98 #1



Sample A:34/98 #3



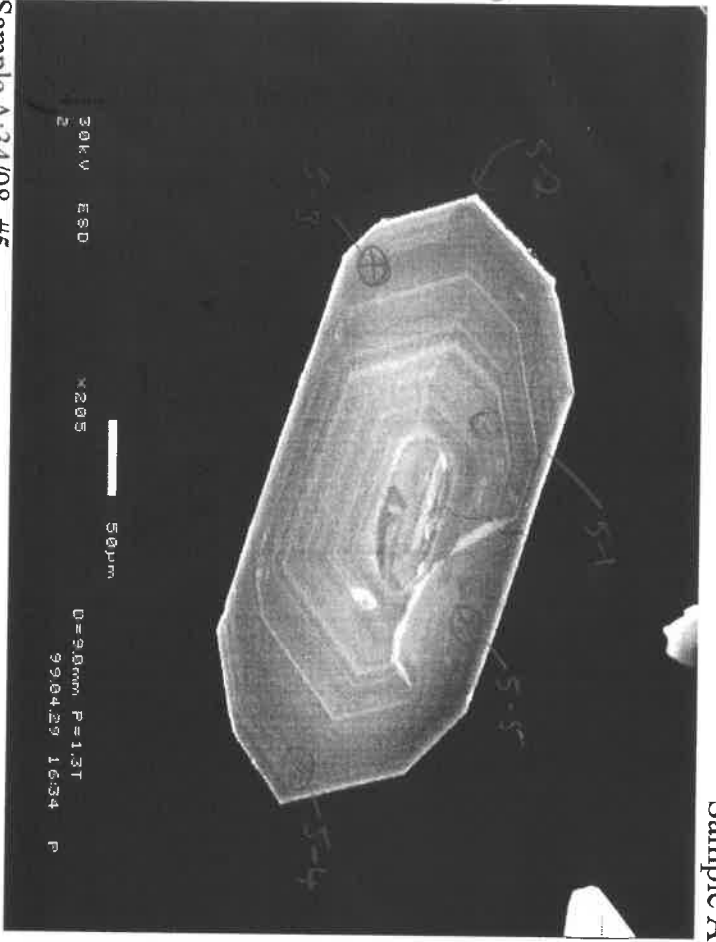
Sample A:34/98 #2



Sample A:34/98 #4

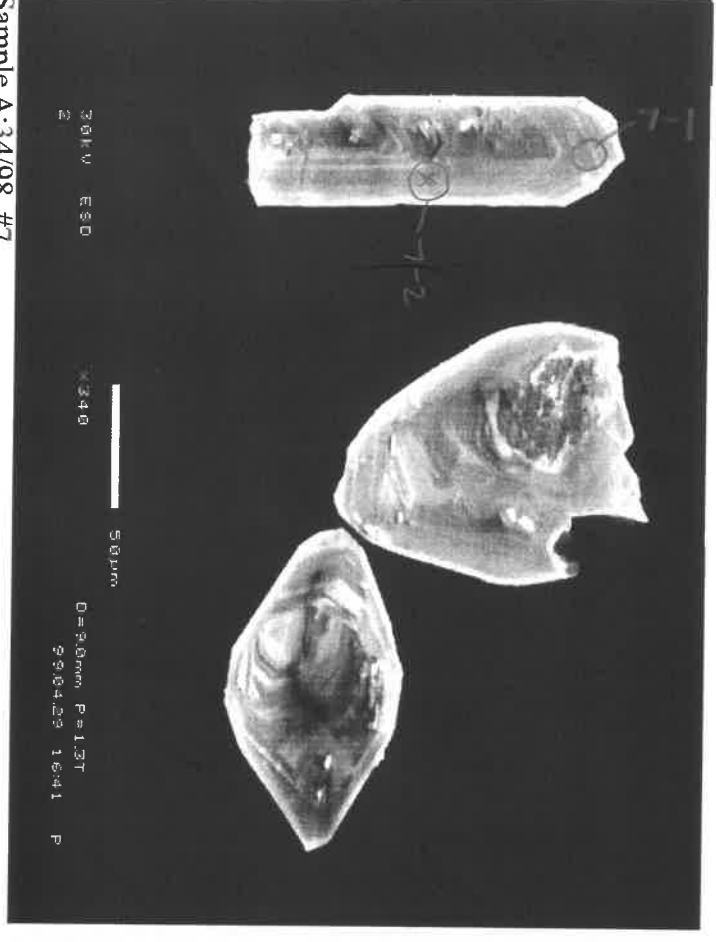
2-1 (244)

5-1 (302)  
5-2 (298)  
5-3 (291)  
5-4 (198)  
5-5 (289)



Sample A:34/98 #5

7-2 (336)

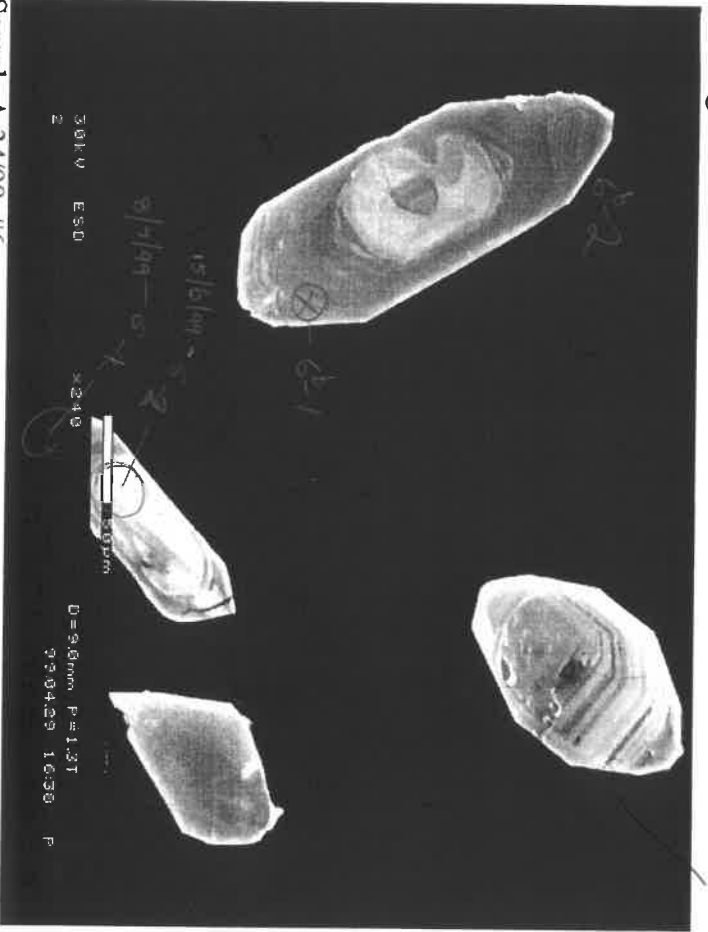


Sample A:34/98 #7

High 204

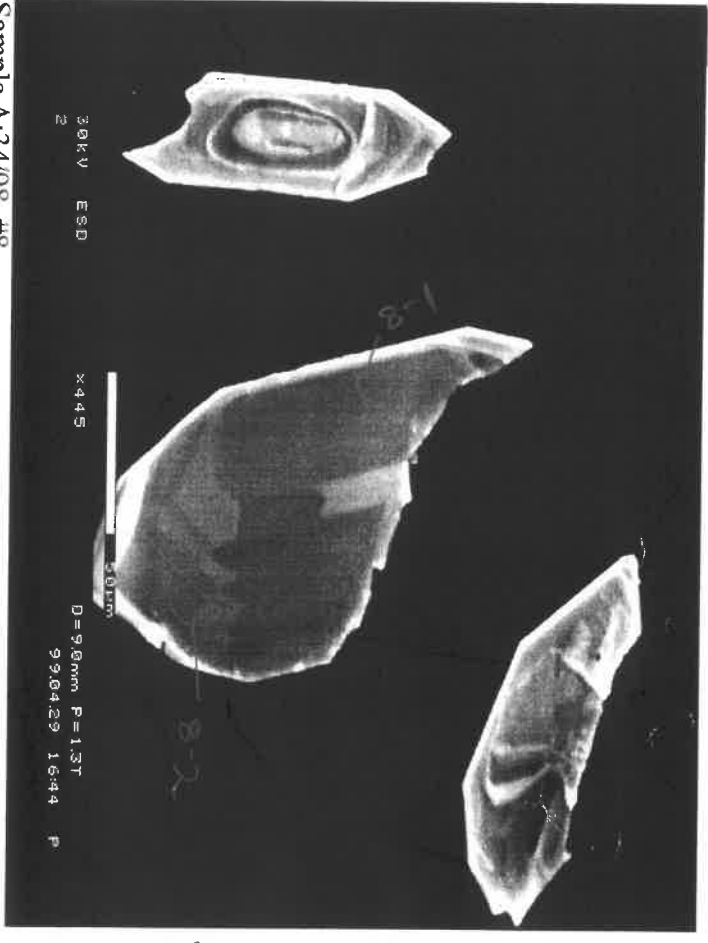
Newspaper  
(6-2)  
as a  
photograph.

6-2 (857)  
6-1 (306)  
6-1 (295)



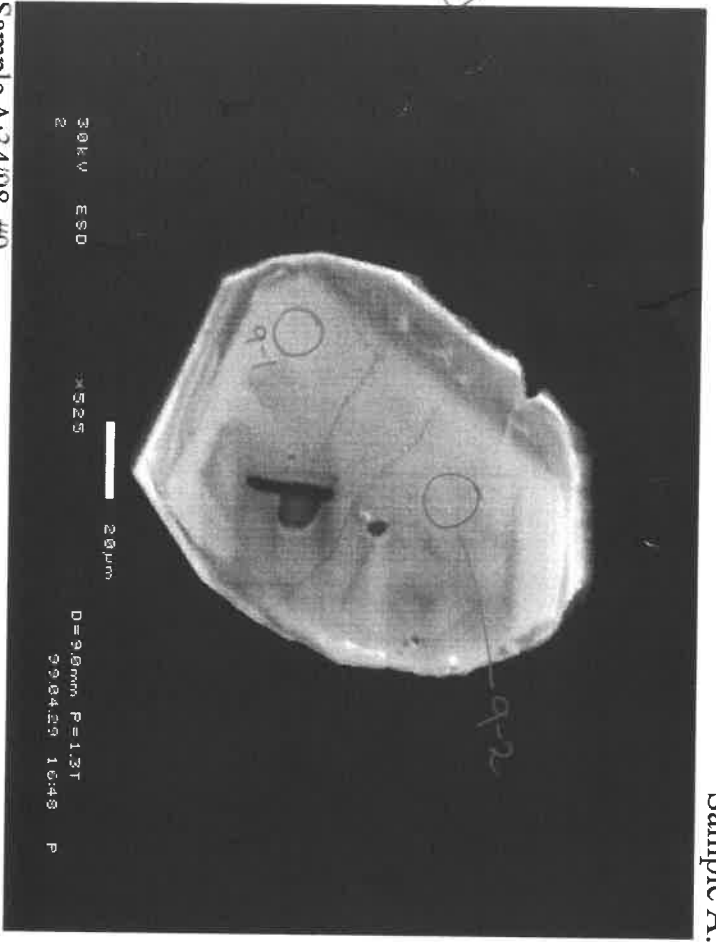
Sample A:34/98 #6

8-2 (486)



Sample A:34/98 #8

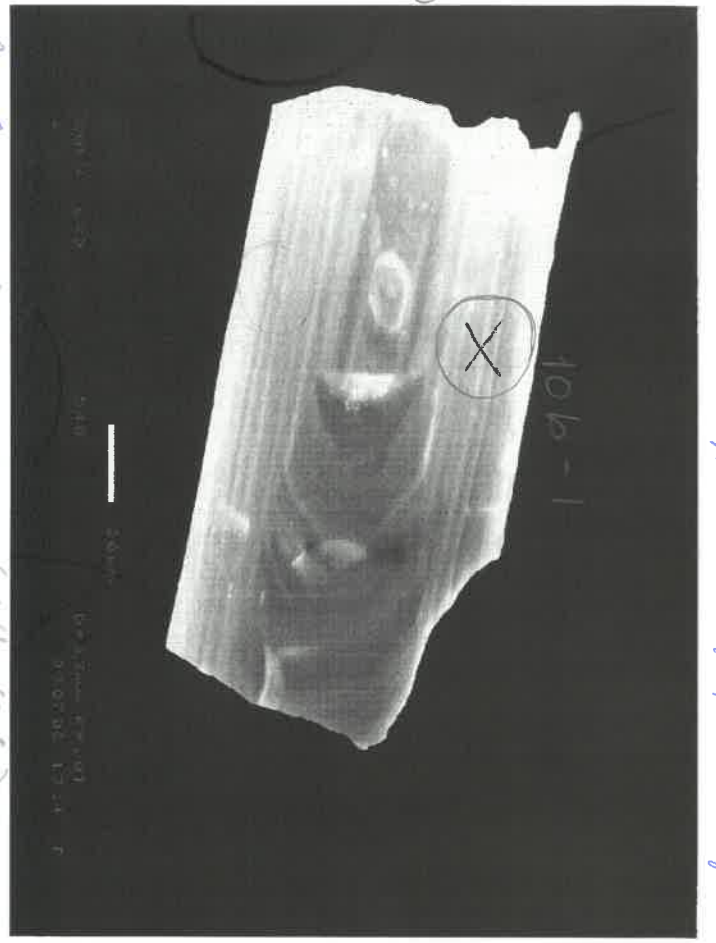
Q-2 (816)



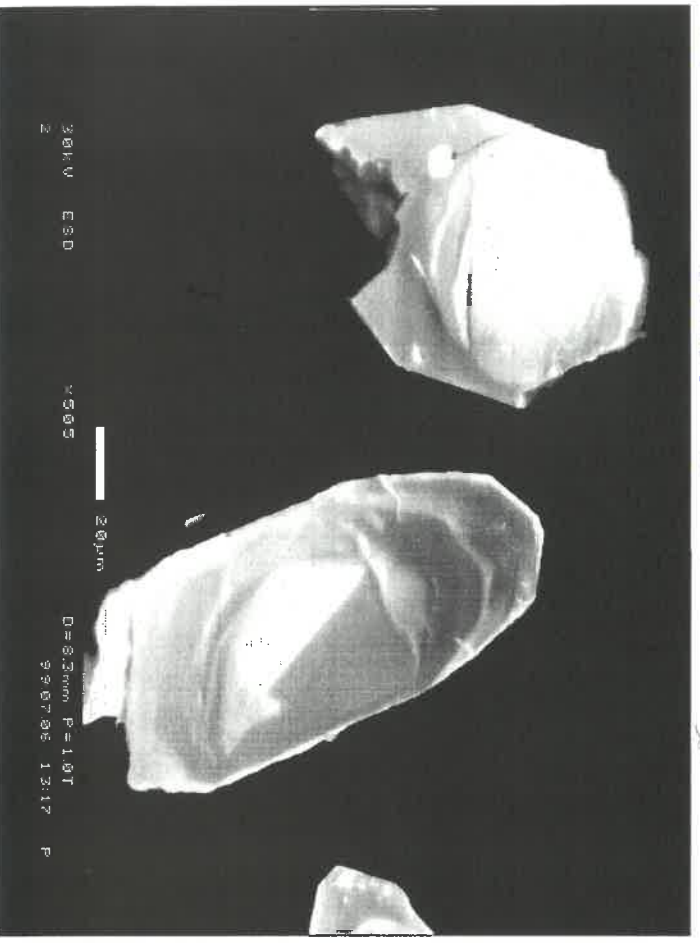
Sample A:34/98 #9

Mount 99-12 Population A (Lionfishes) Laos

10-1  
(276)  
106-1 (240)



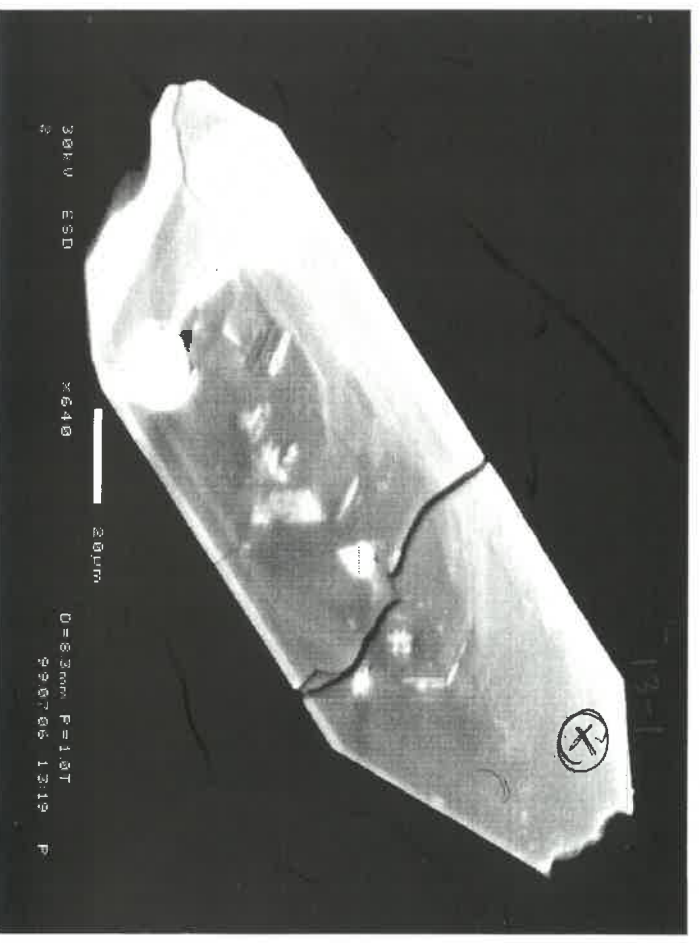
Pop A-10 (9912a-10) (very 10g)



A-12



A-11 → 50um



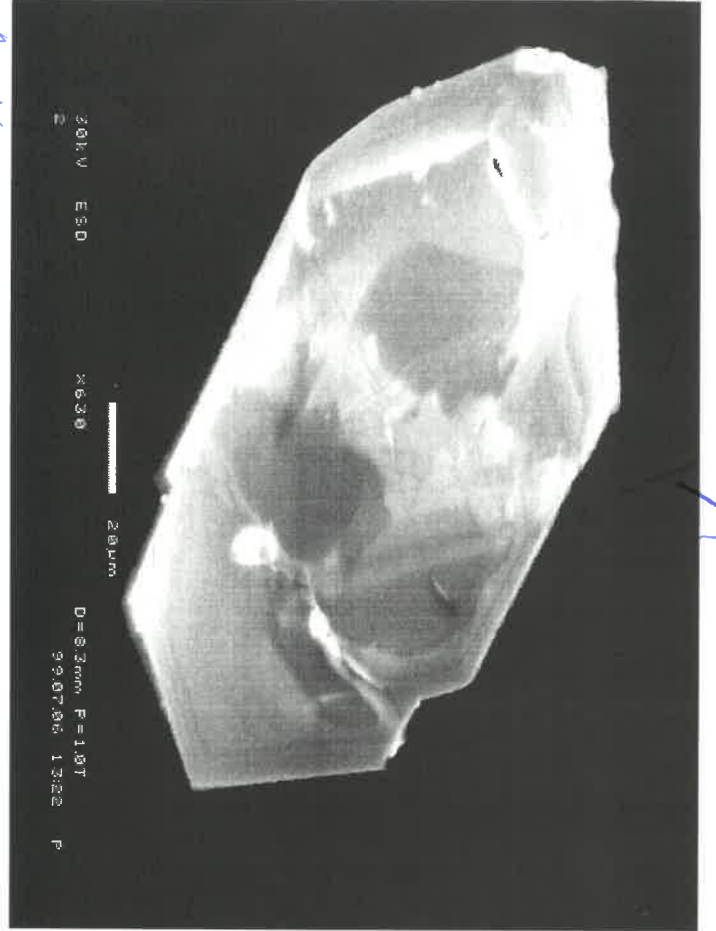
A-13

(291)

11-1 (298)

13-1 (293)

1197-1



A-14

fractures

Mount 99-12

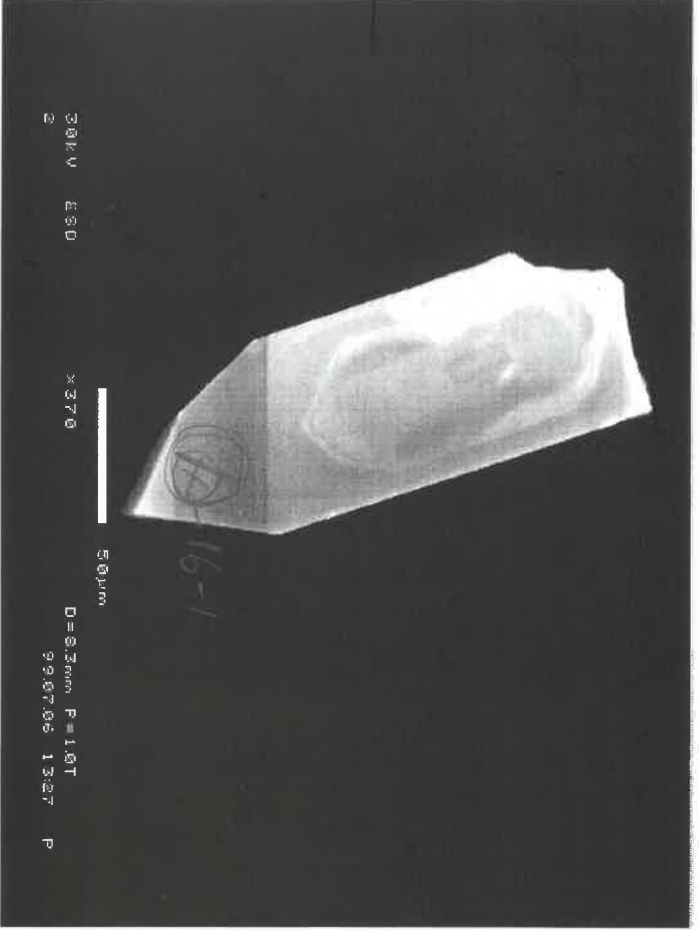
Prop A (cont)

fractures

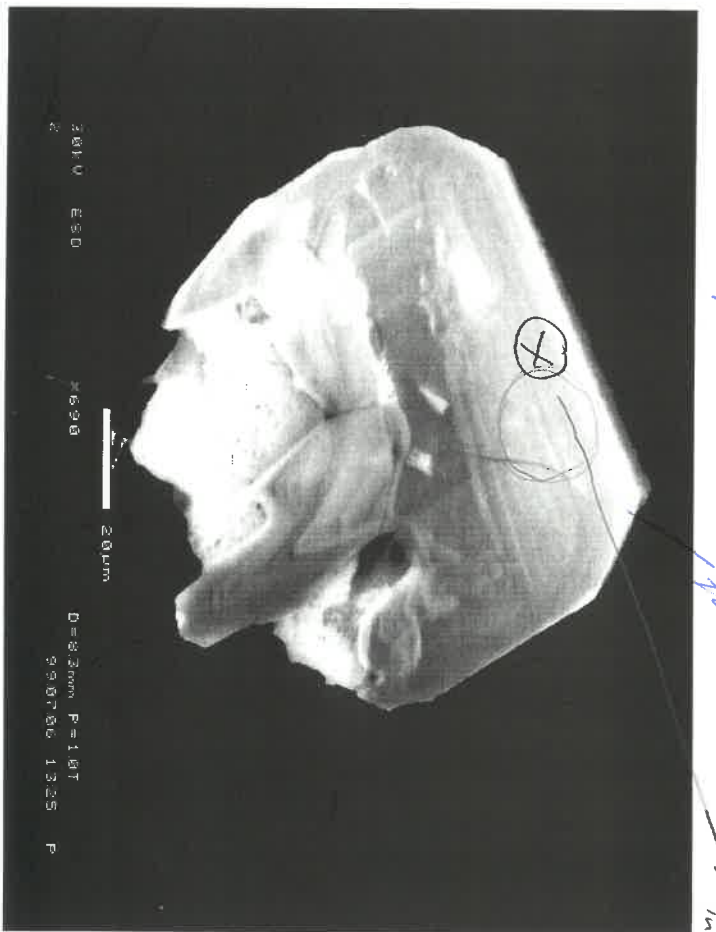
not done - increase in

Crack + possible other features in other corners

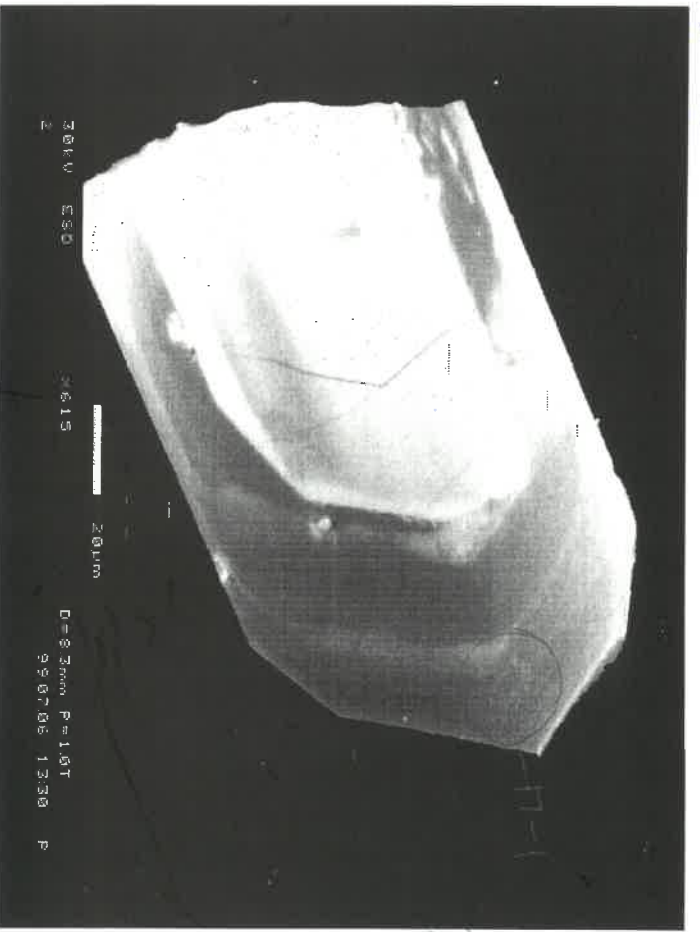
16-1 (299)



A-16



A-15



A-17

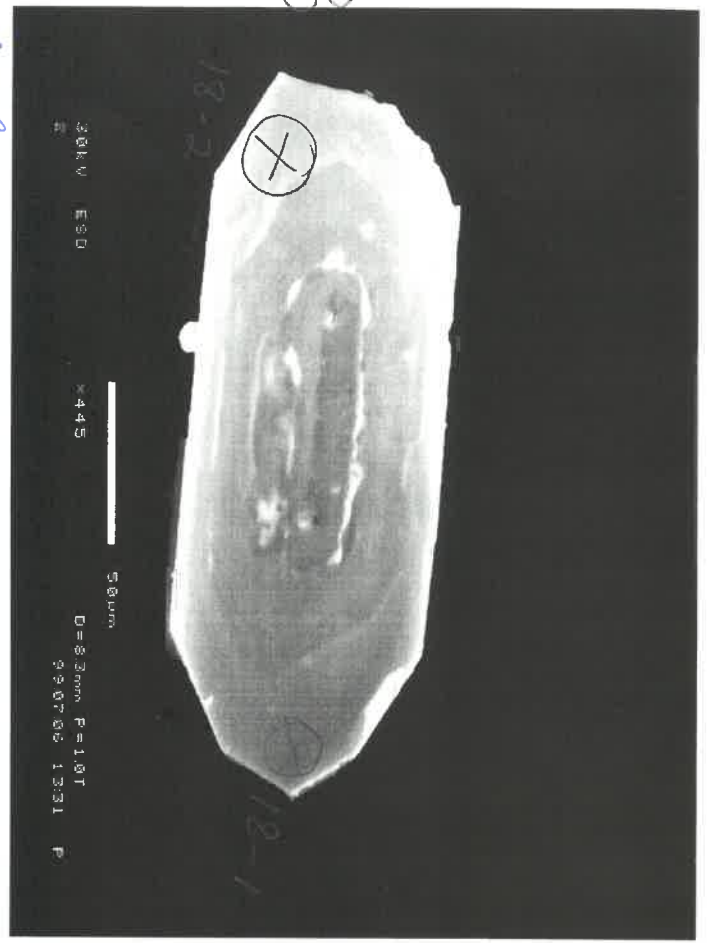
fractures



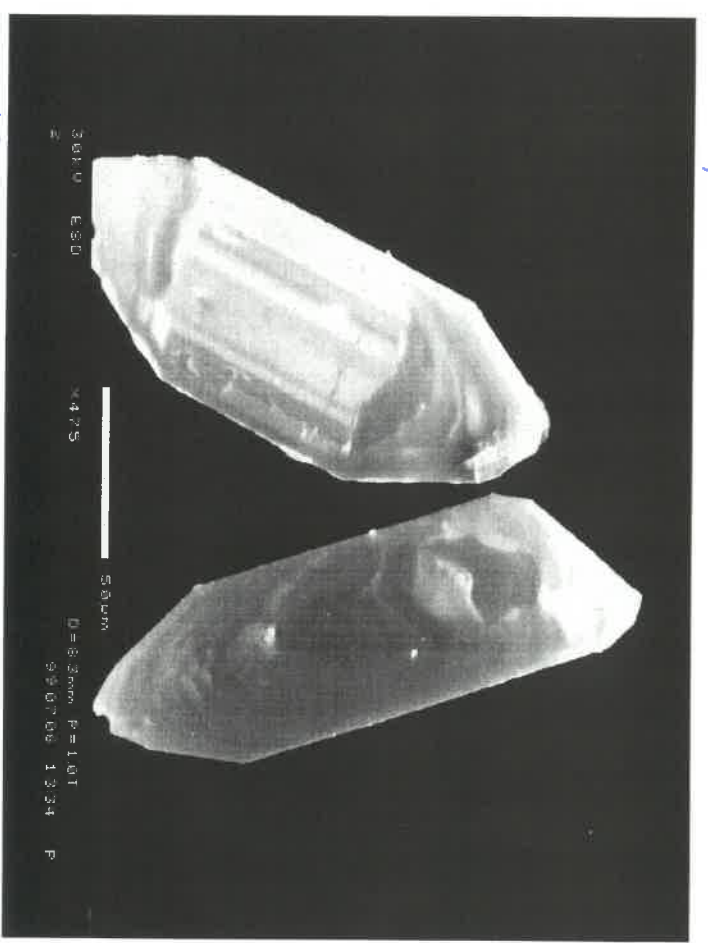
17-1 (24)

Mount 9912 - Prep A. Cont.

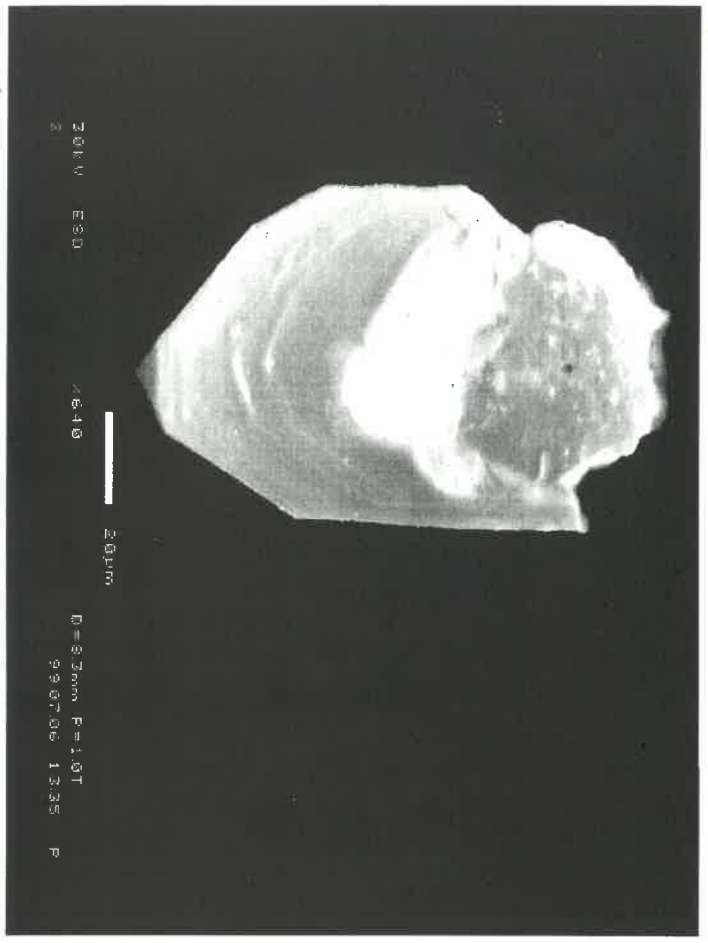
18-1 (293)  
18-2 (295)



A-18



A-19



A-20