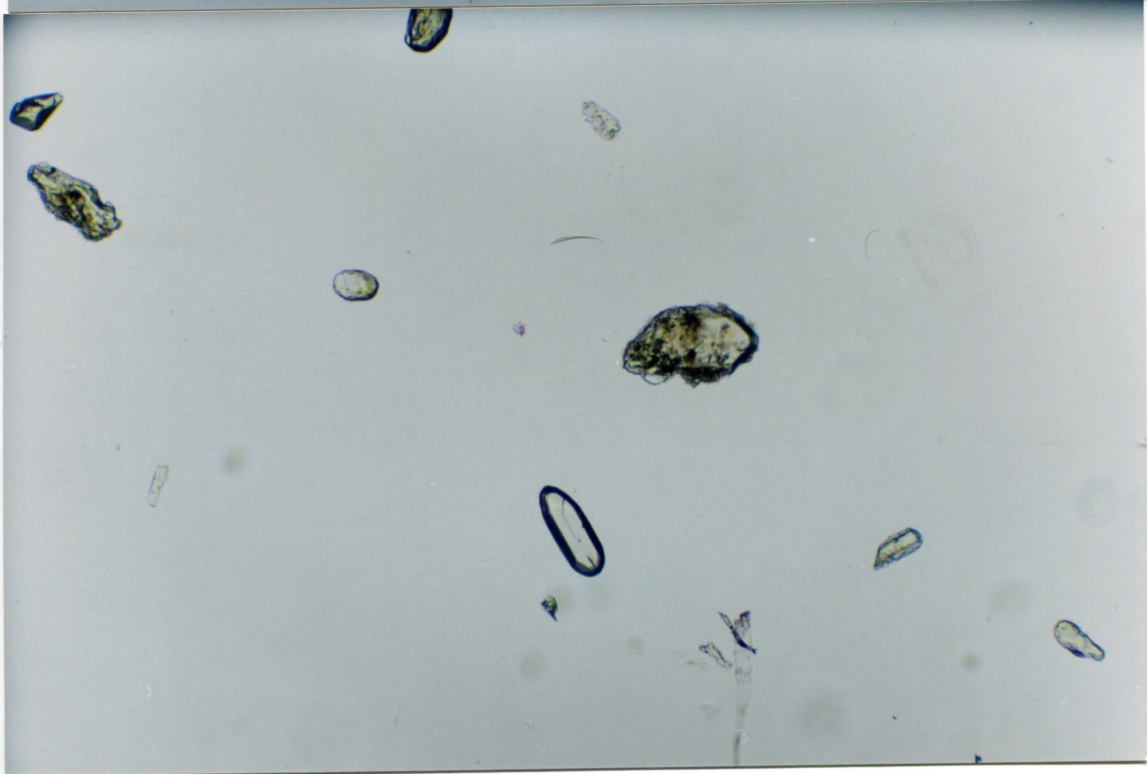
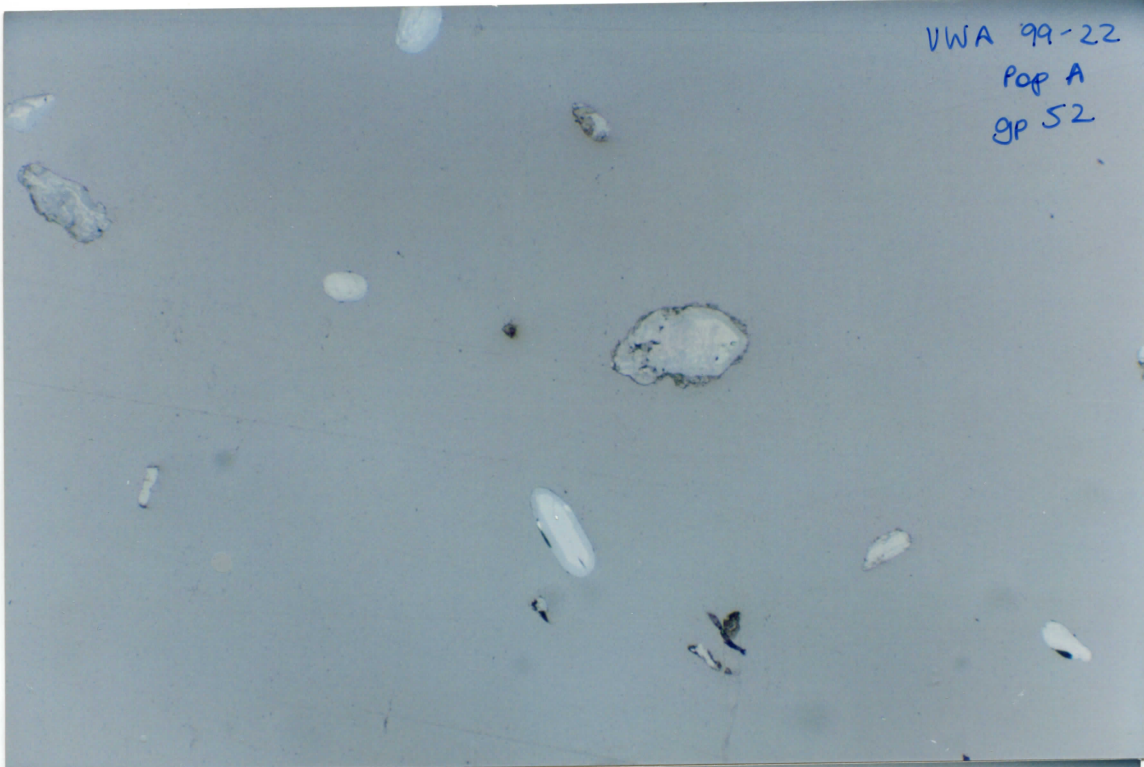
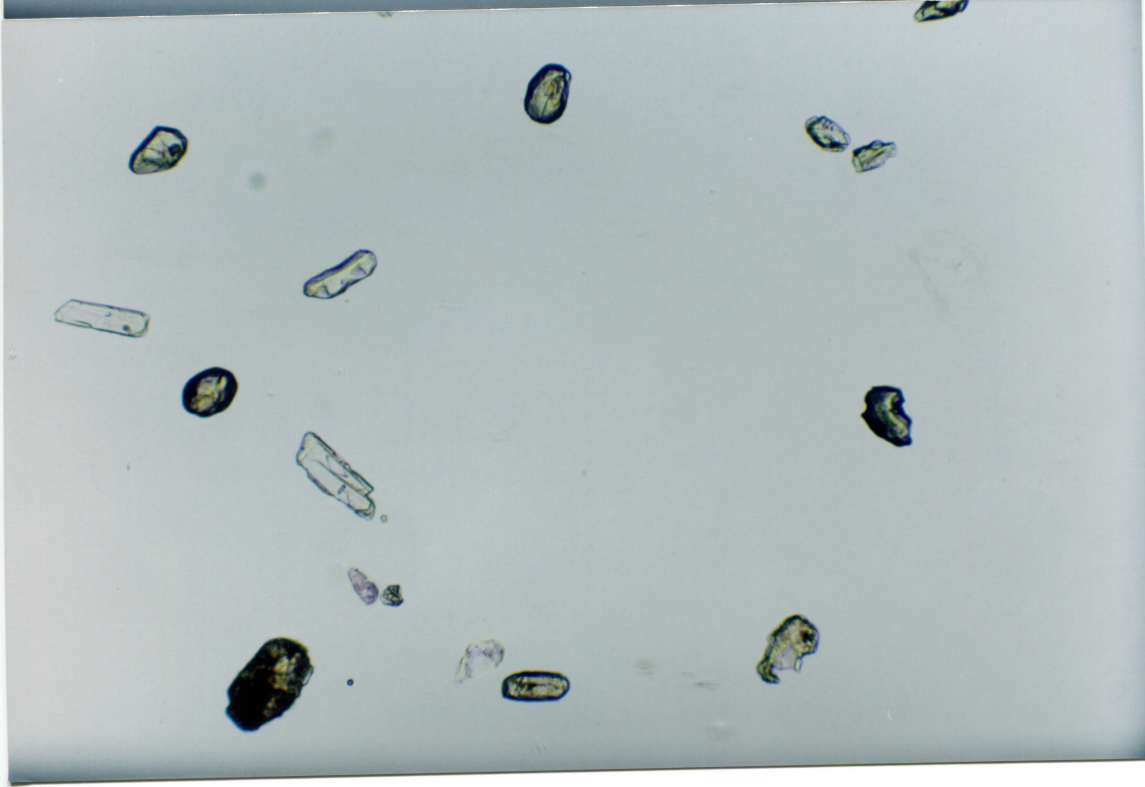
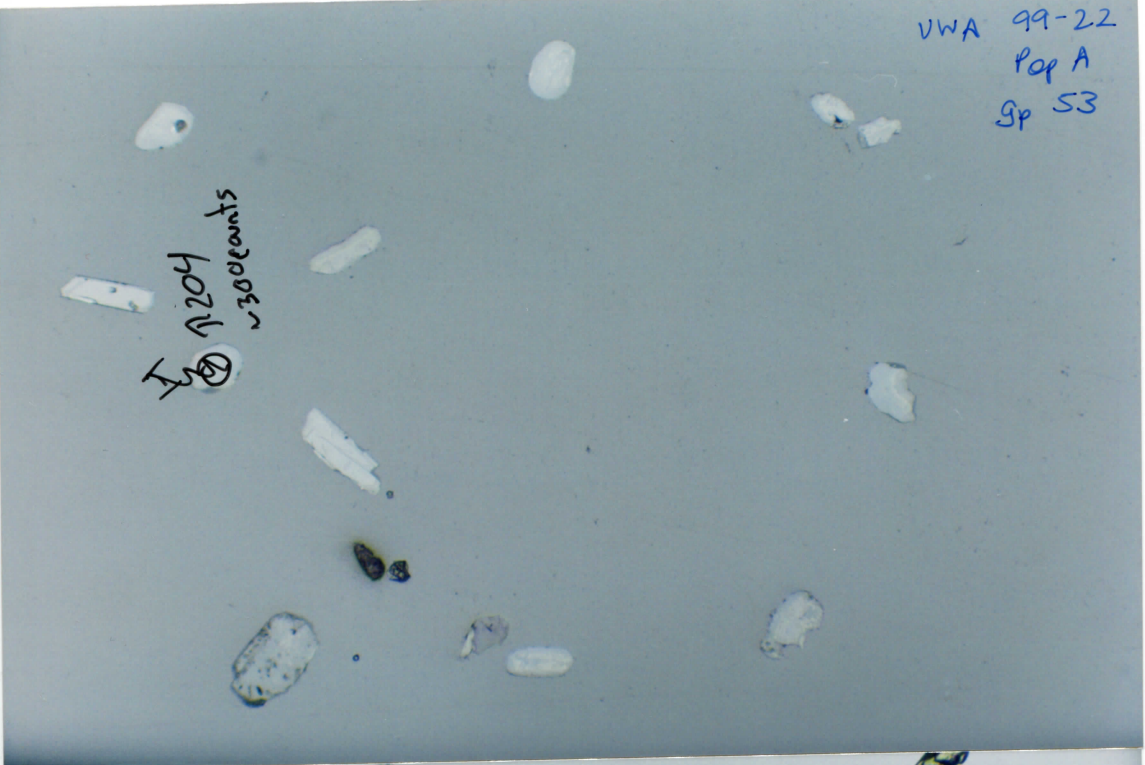


VWA 99-22
Pop A
gp 52

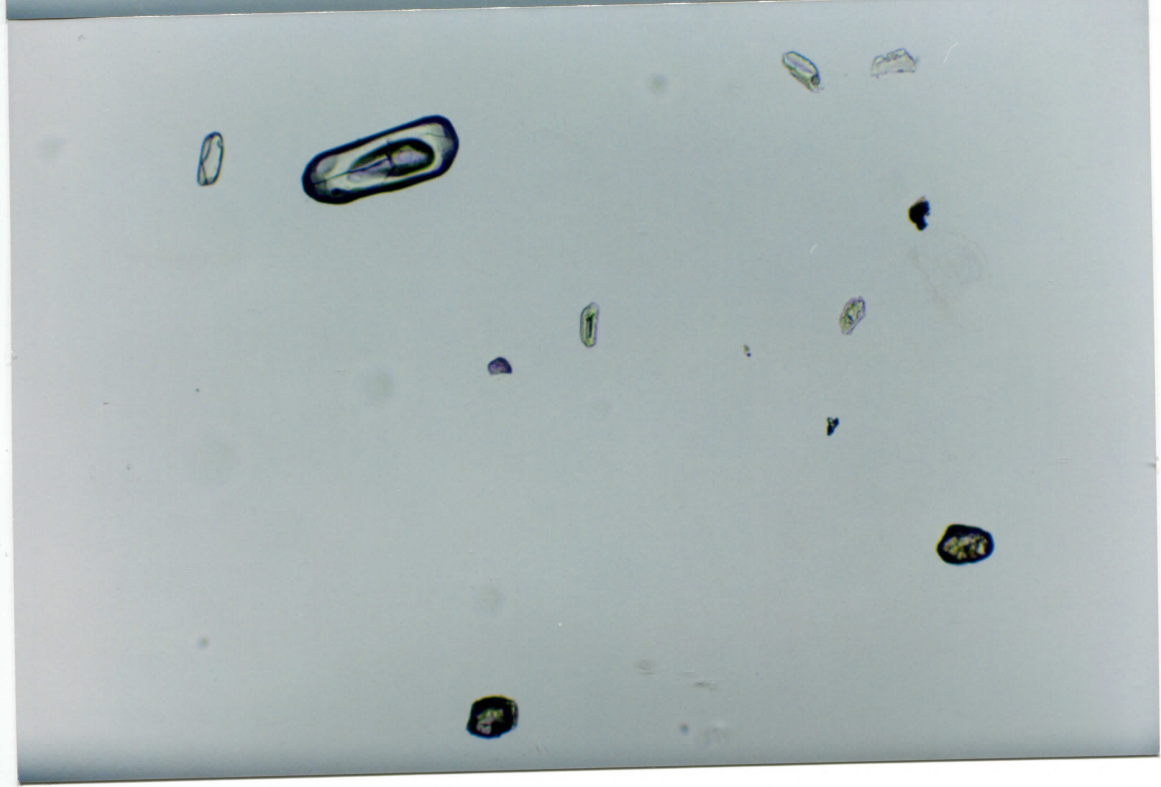
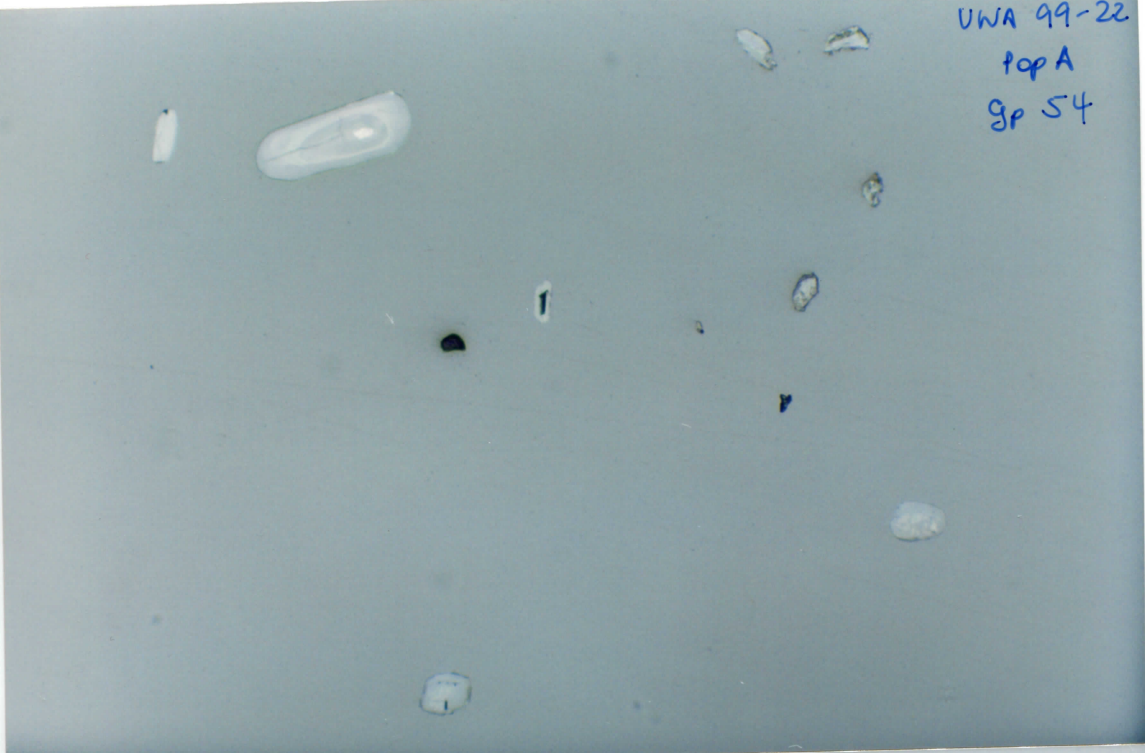


VWA 99-22
Pop A
Sp 53

J 1204
~300 counts

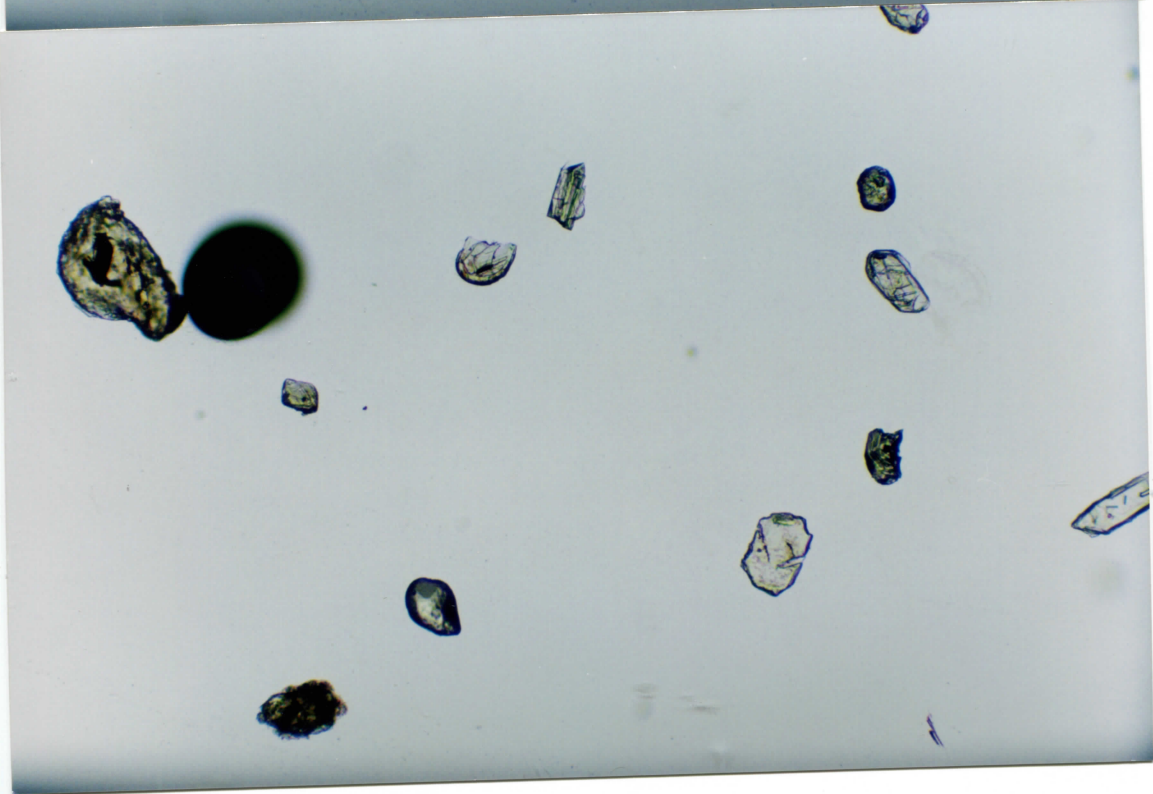


UWA 99-22
top A
gp 54



DWA 99-22
Pop A
8P 55

01-1

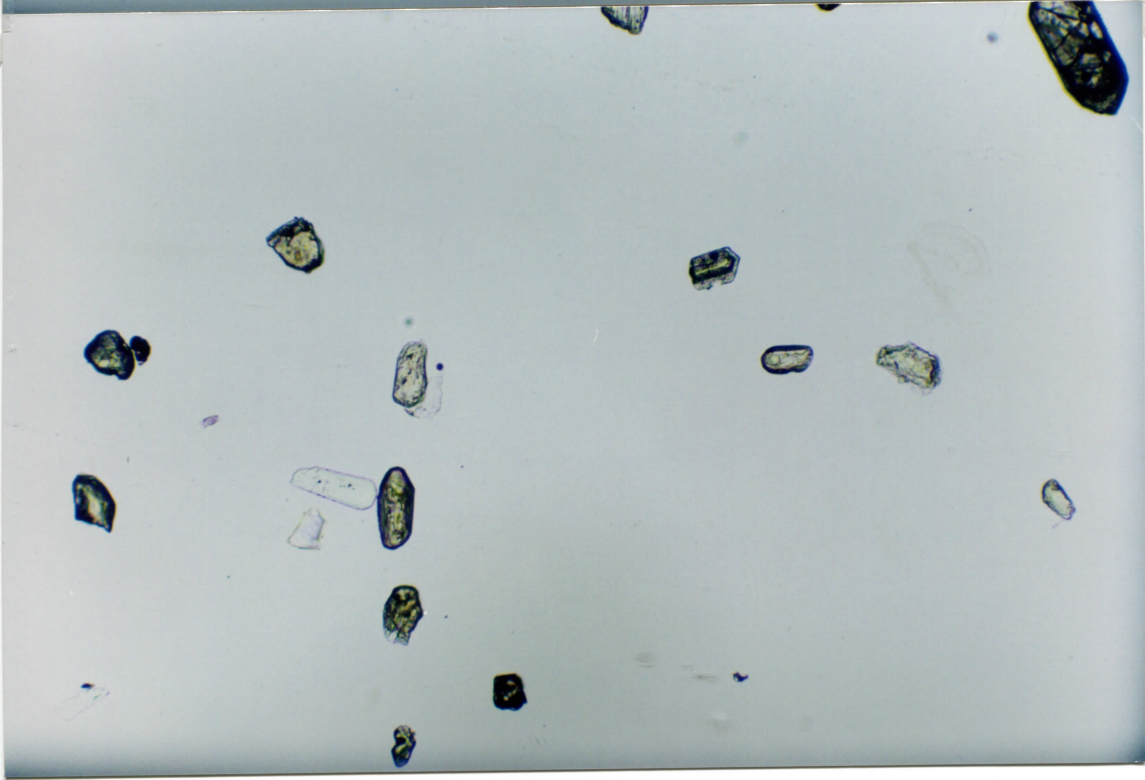


UWA 99-22
Pop A
gp 56

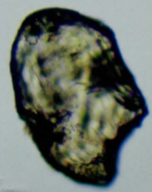
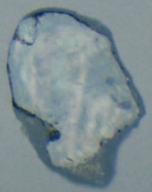
2-1

2-1

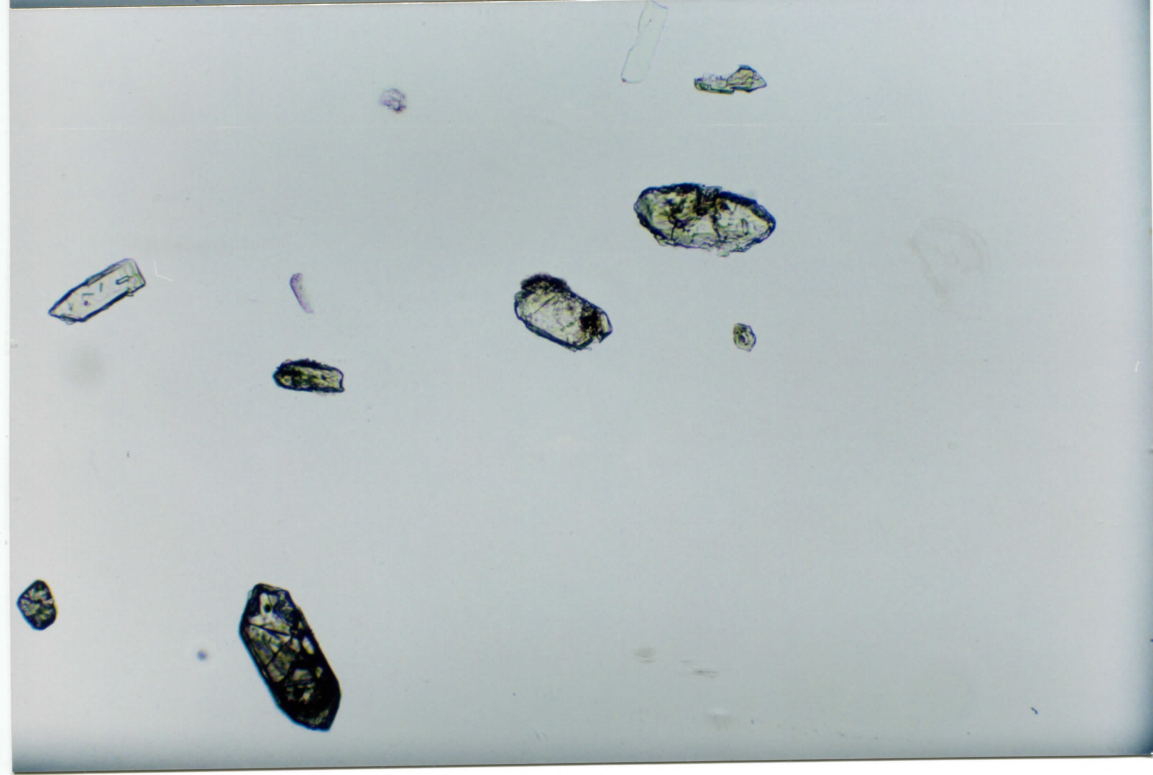
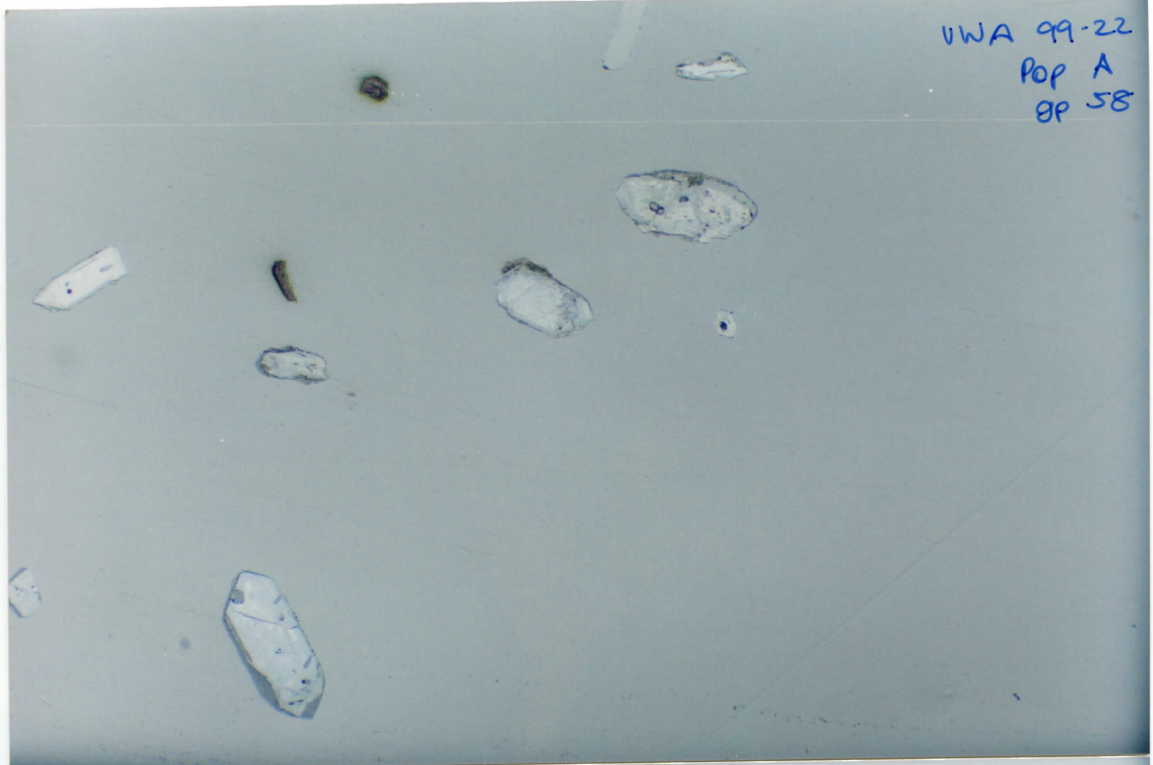
high 204



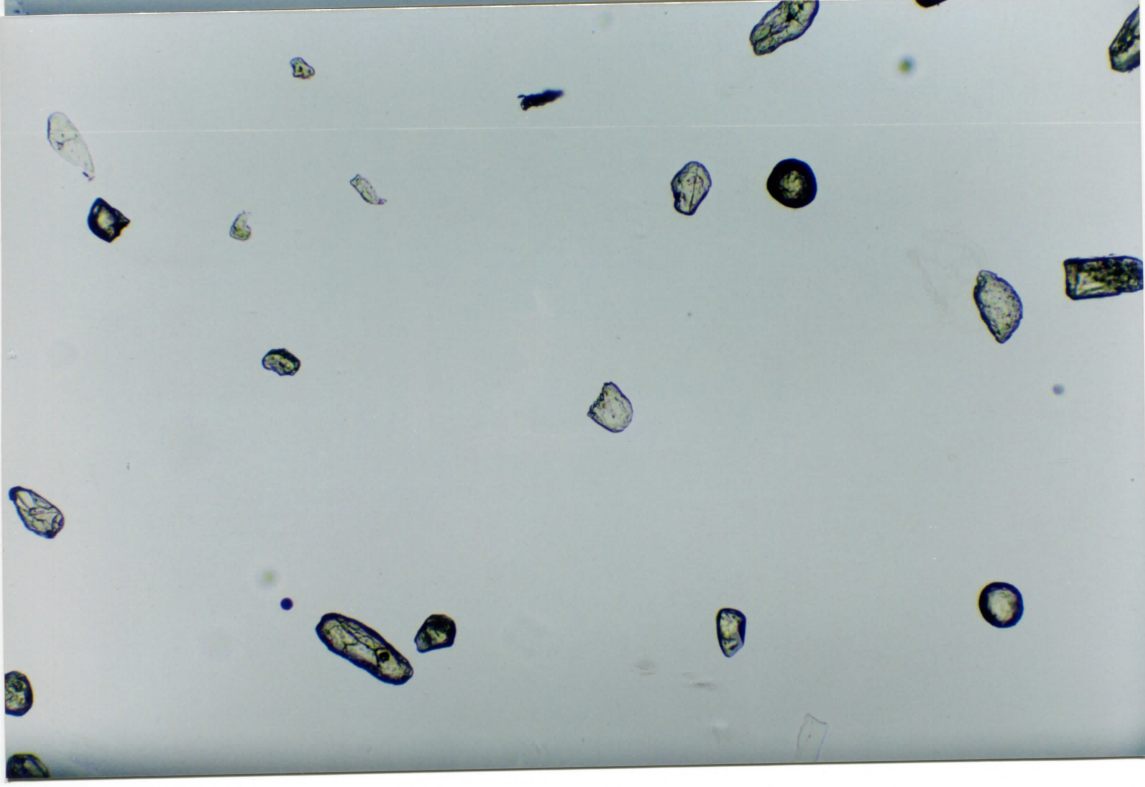
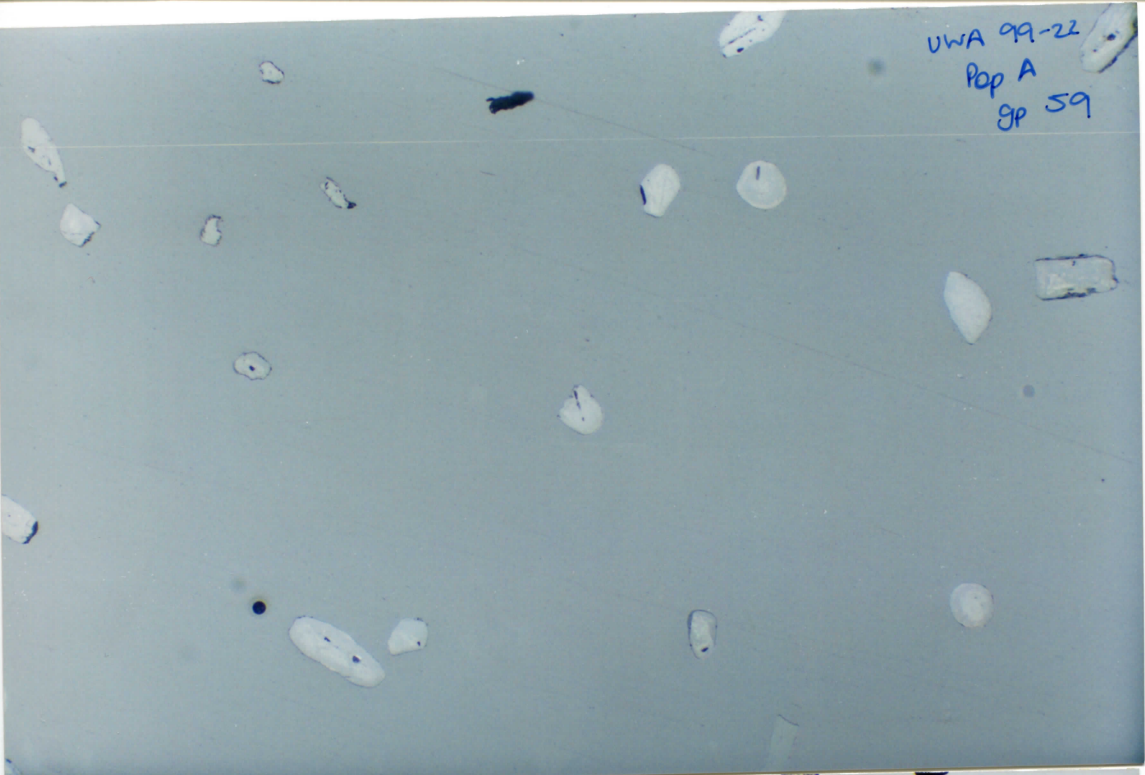
VWA 99-22
Pop A
GP 57



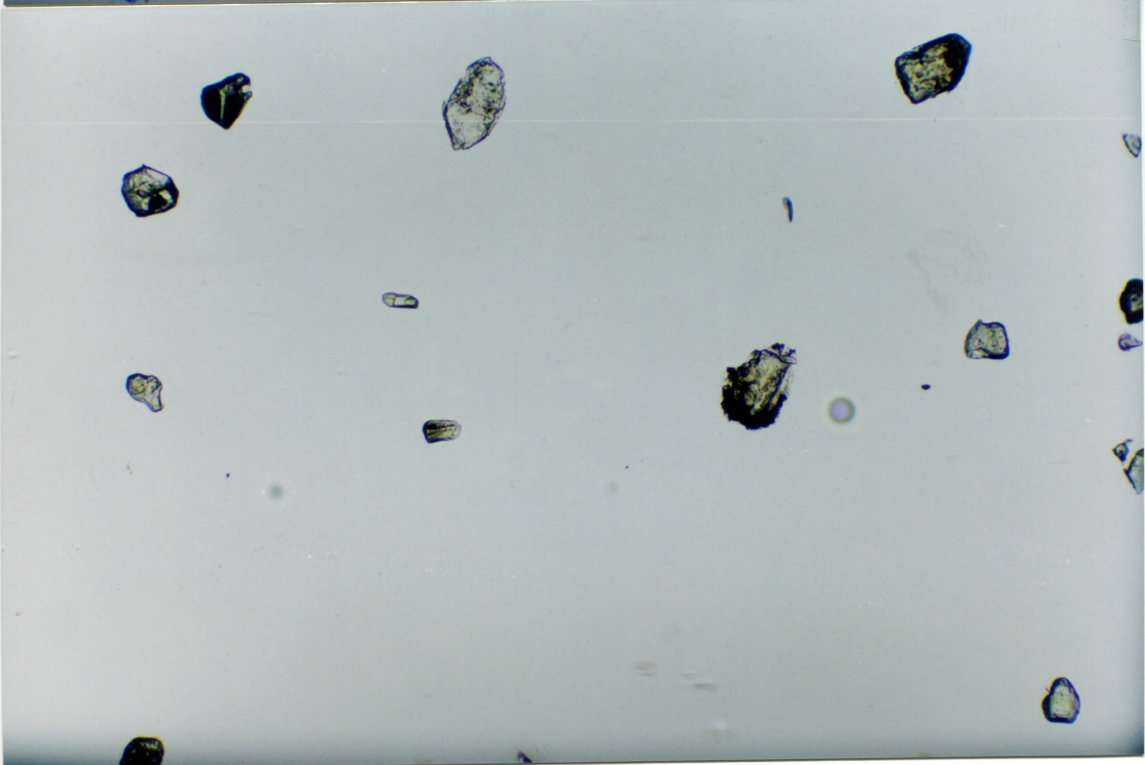
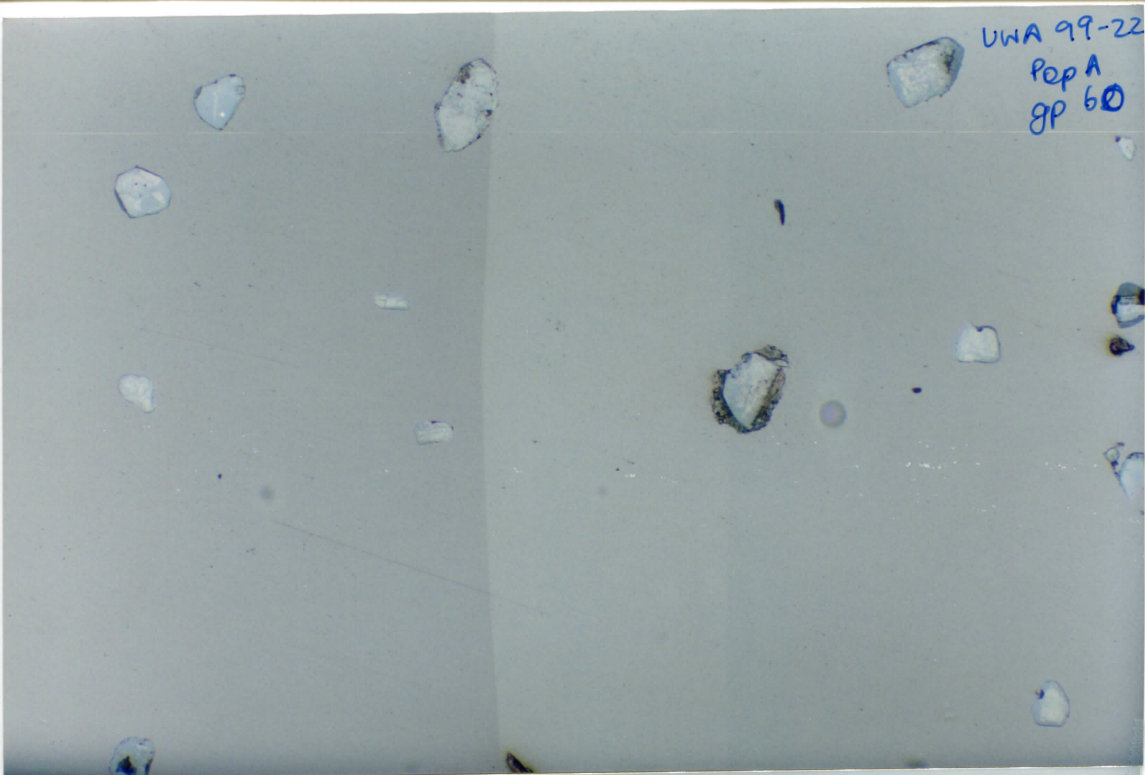
VWA 99-22
Pop A
8P 58



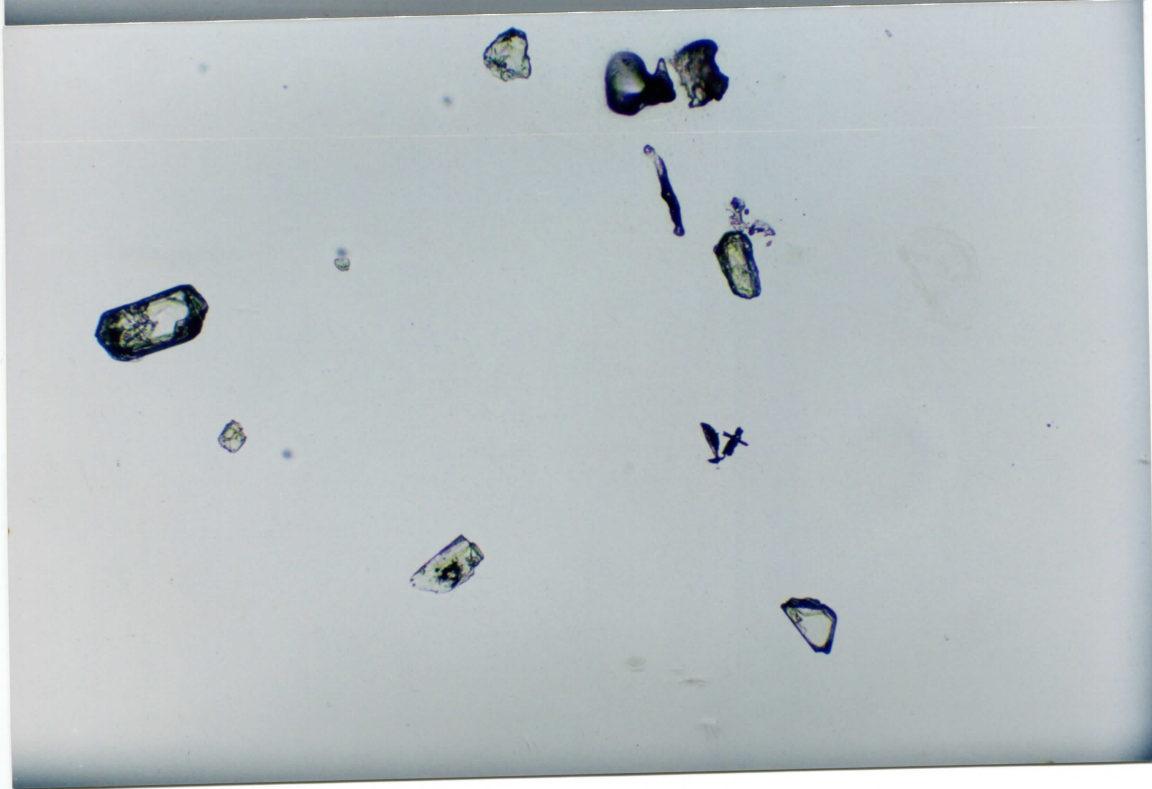
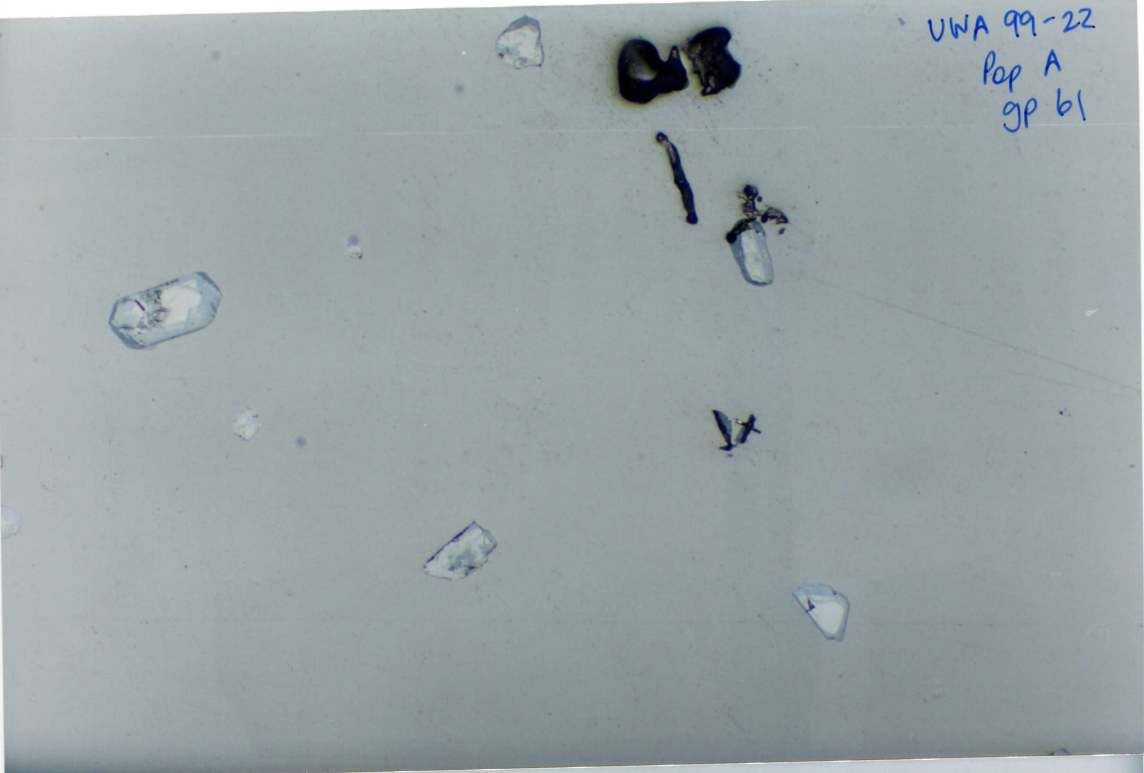
UWA 99-22
Pop A
SP 59



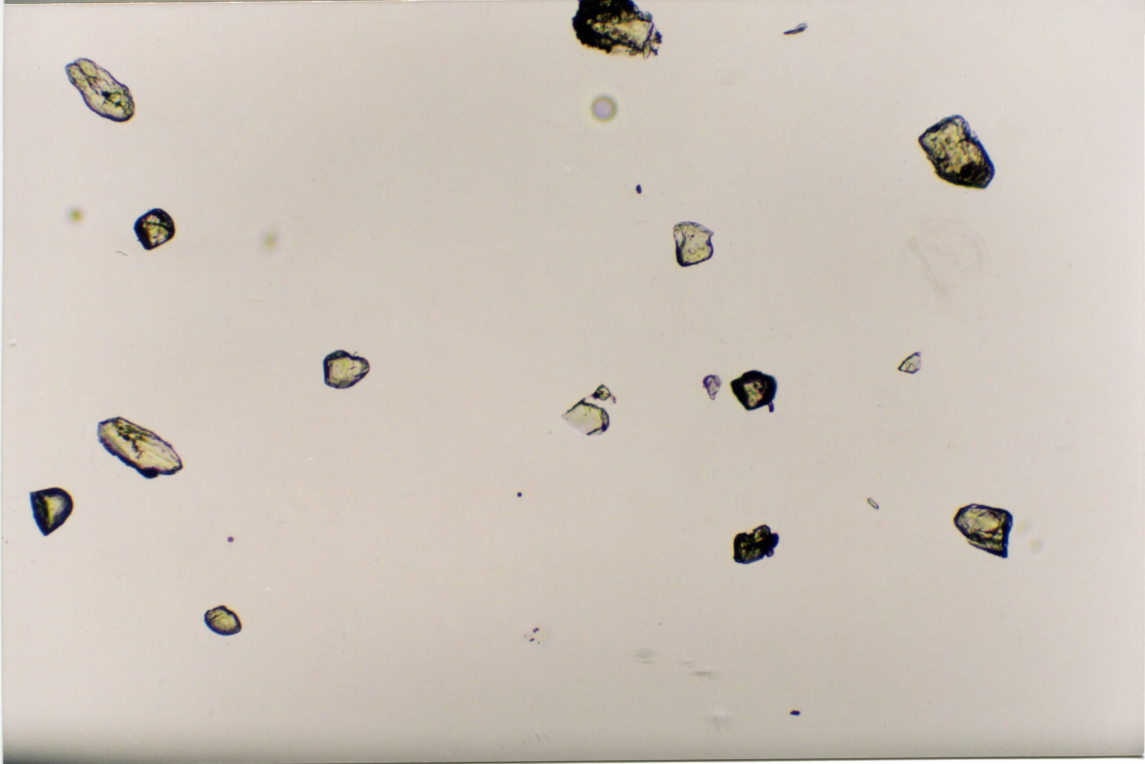
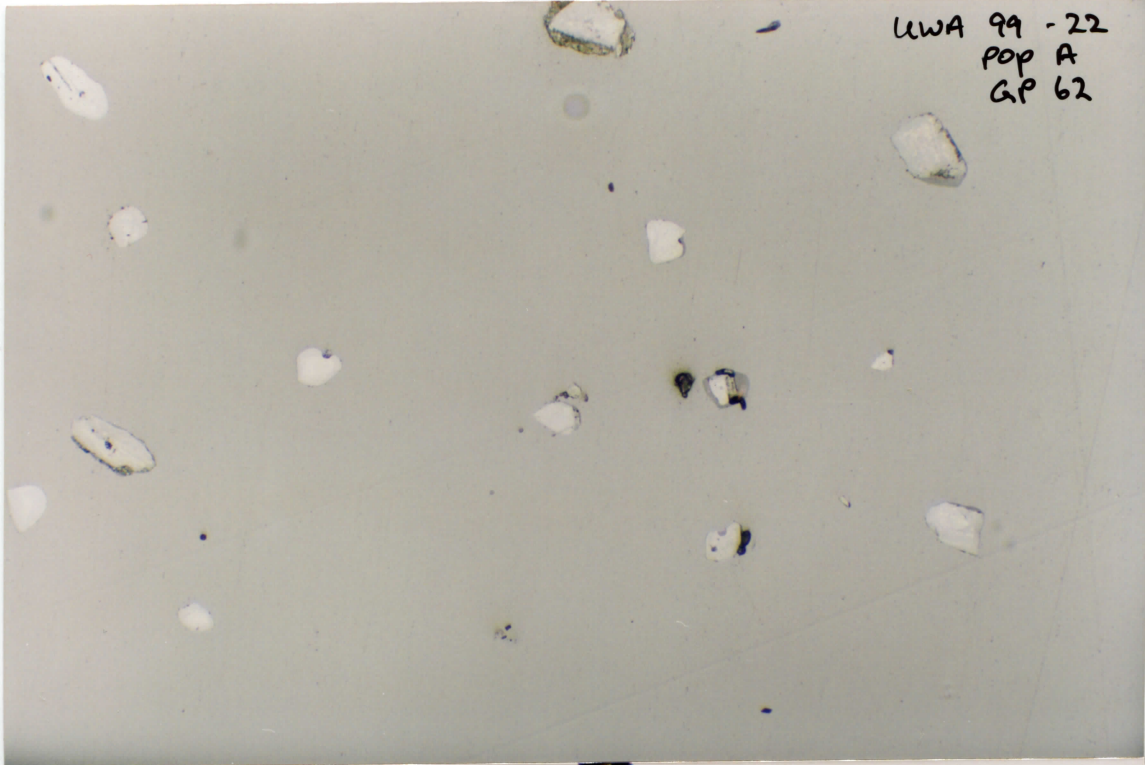
UWA 99-22
Pop A
gp 60



UWA 99-22
Pop A
gp 61



UWA 99 - 22
POP A
GP 62



UWA 99-22
pop A
GP 63

