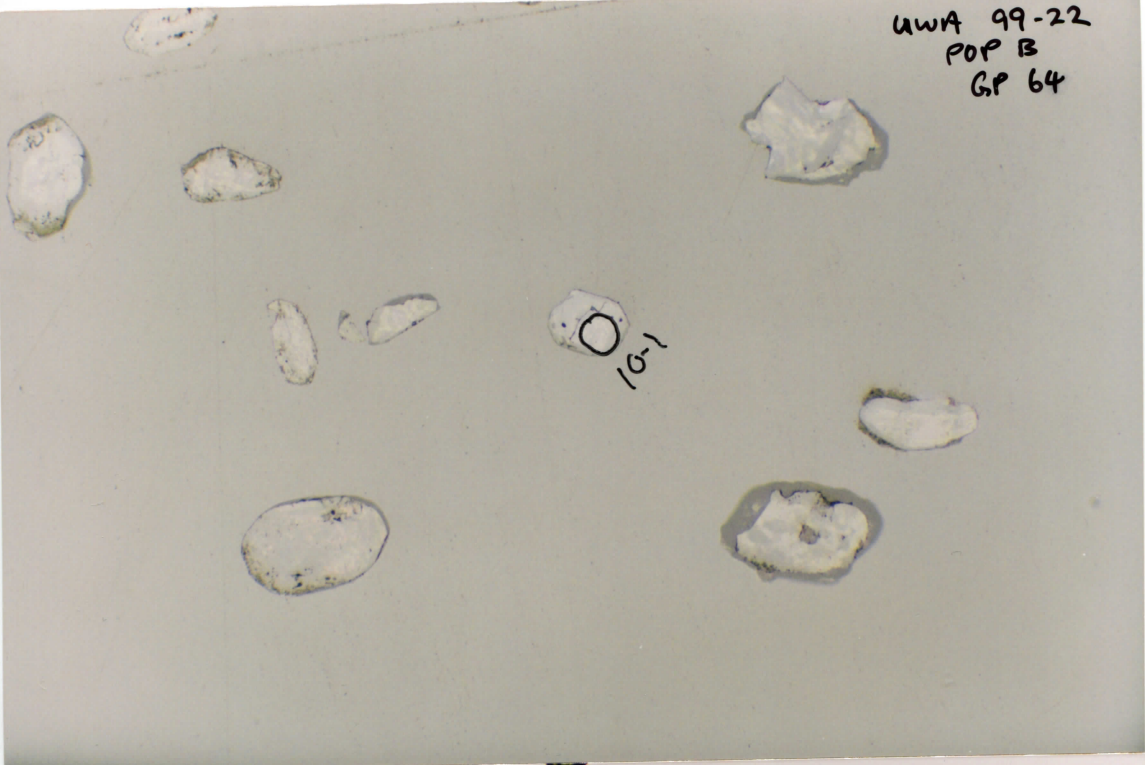
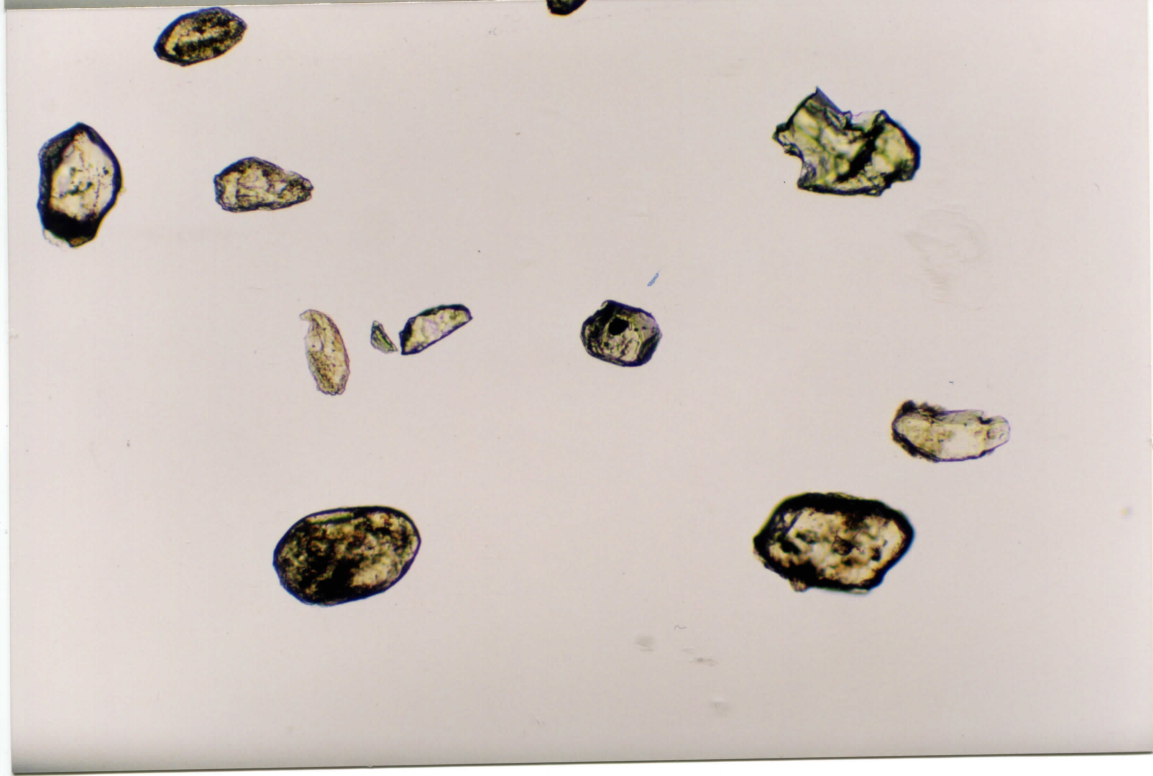


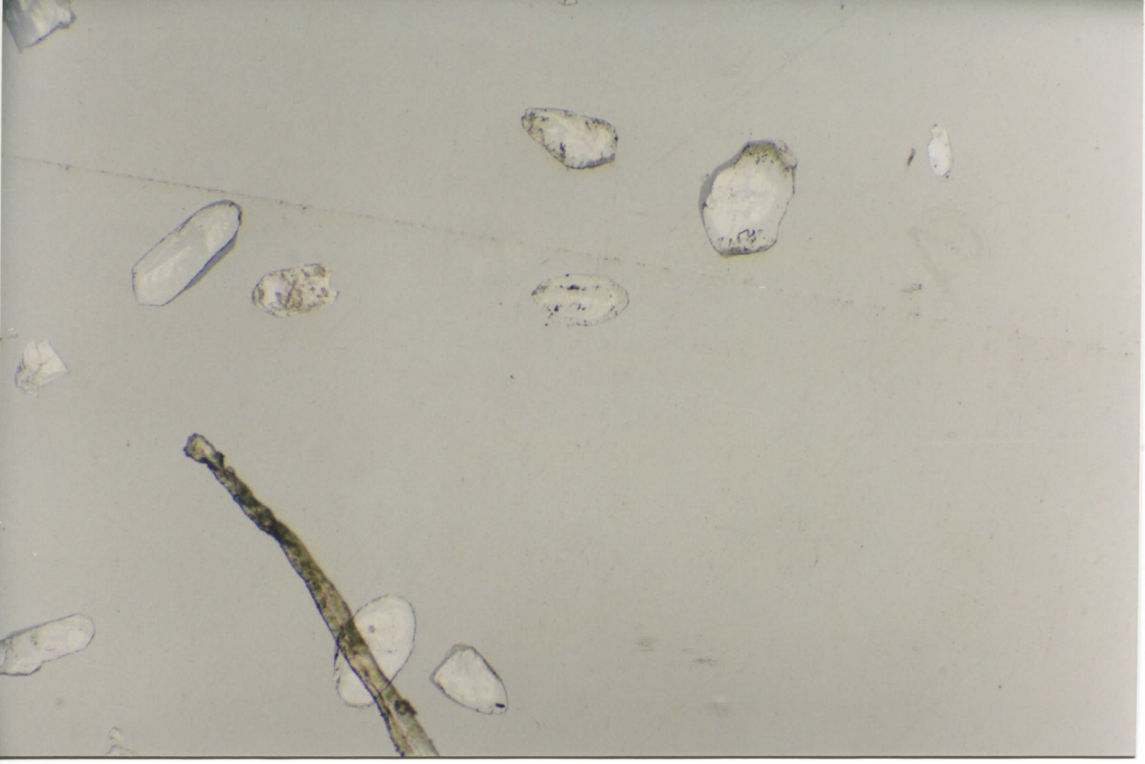
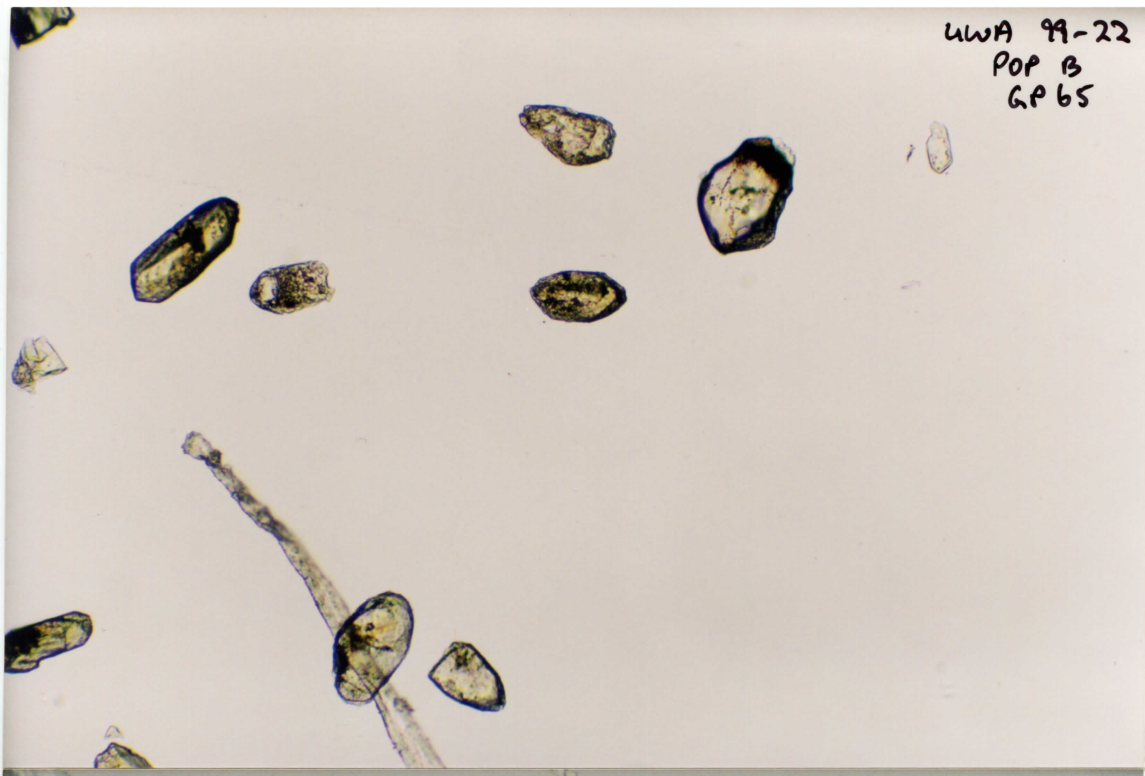
UWA 99-22  
POP B  
GP 64



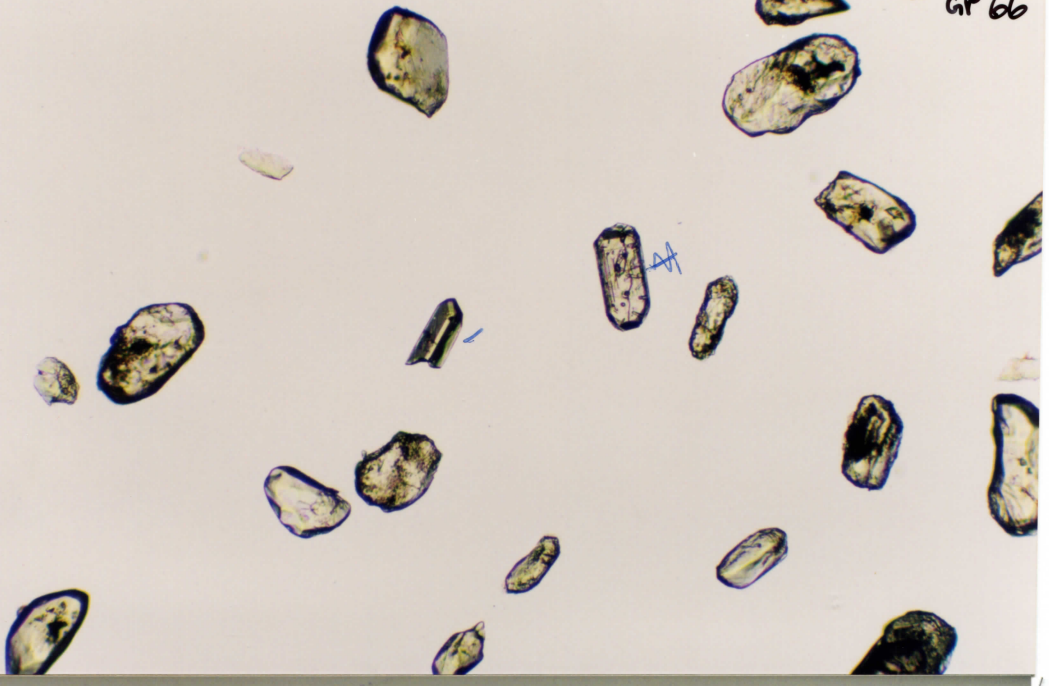
0  
101



LWA 99-22  
POP B  
GP 65

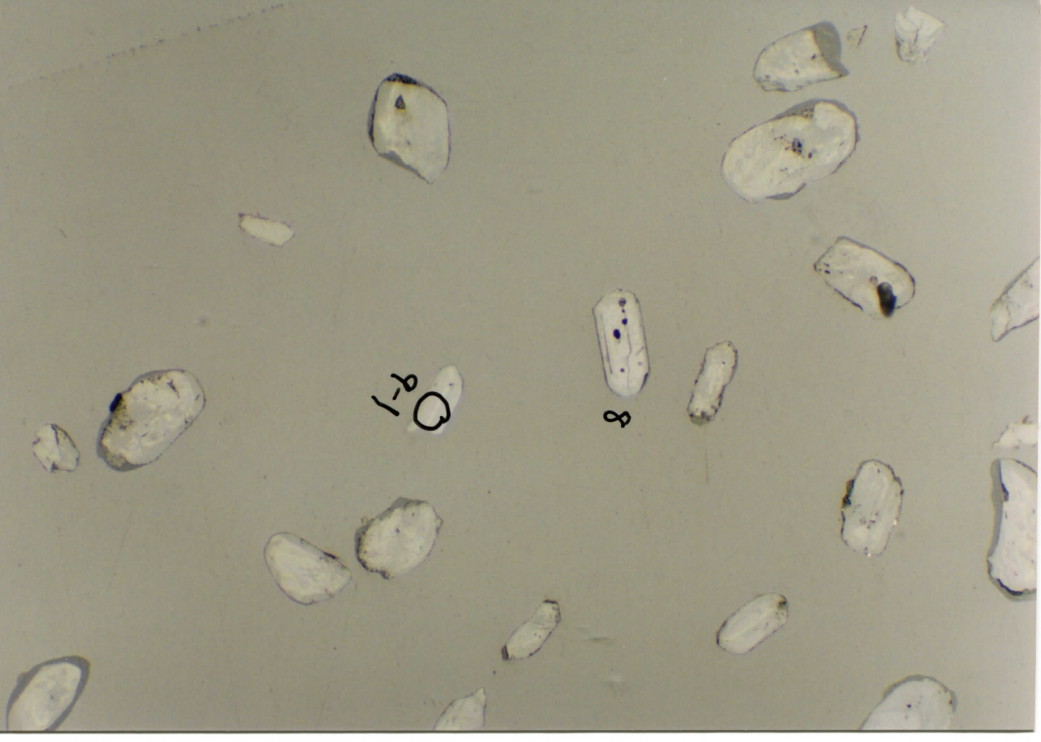


UWA 99-22  
POP B  
GP 66

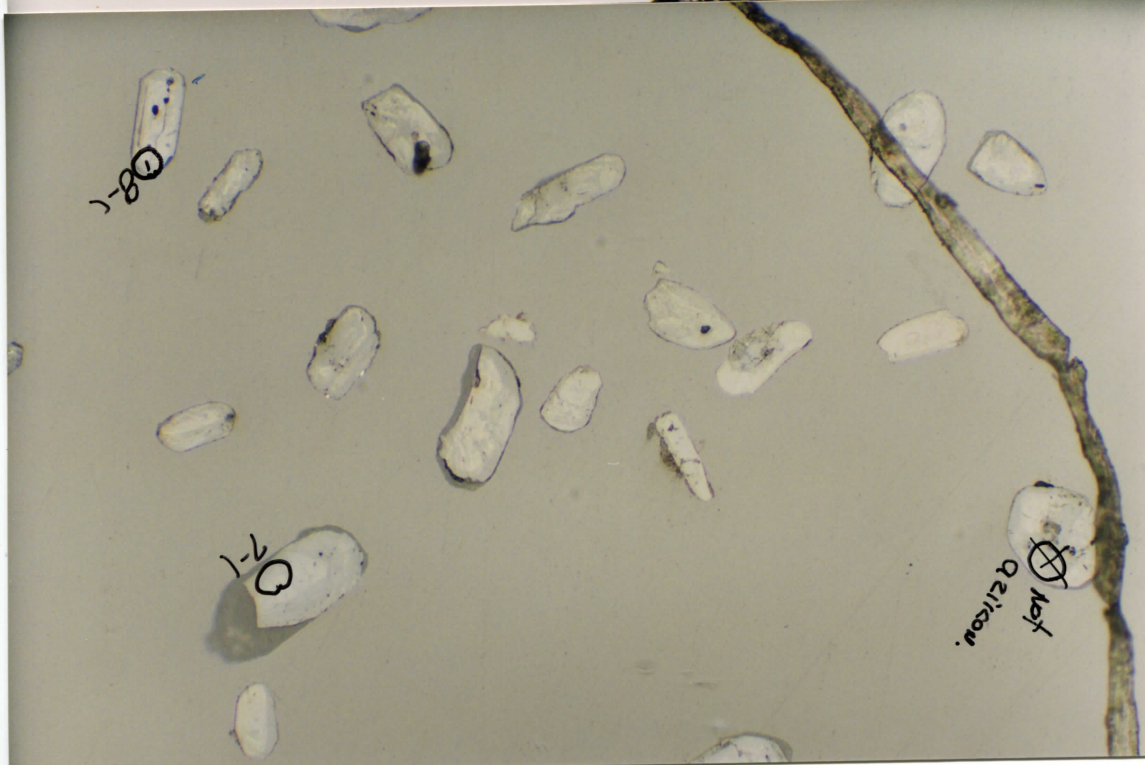
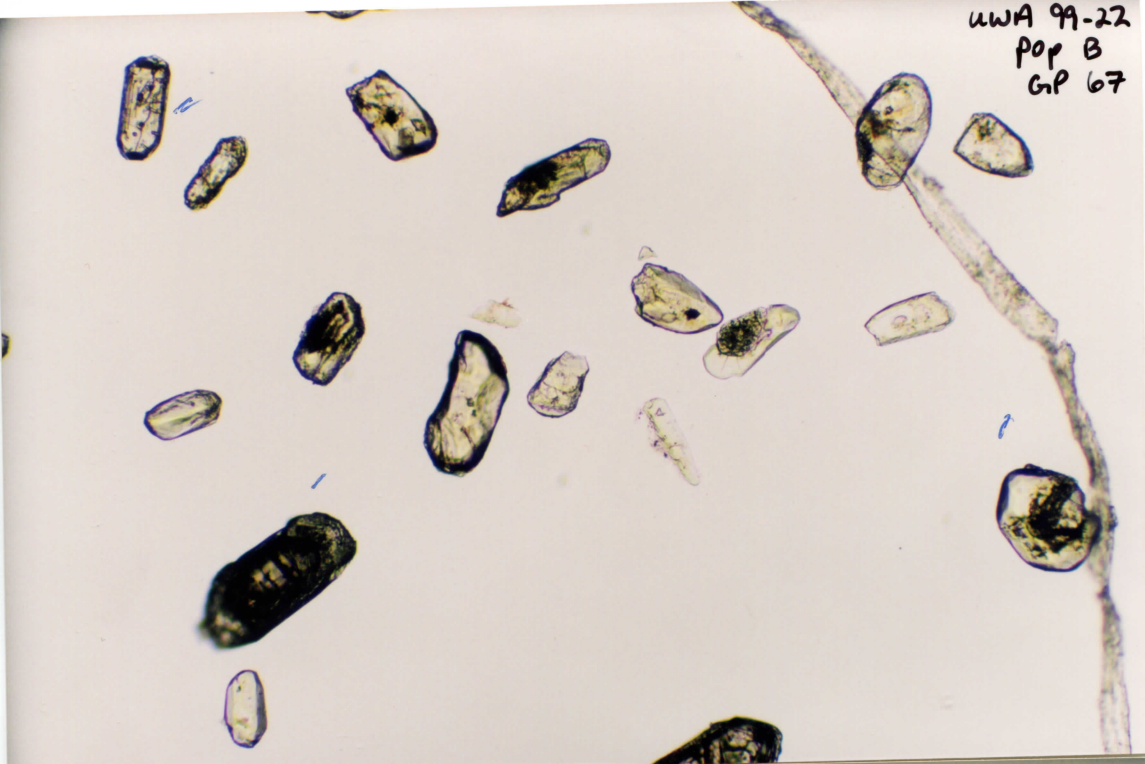


Q-1

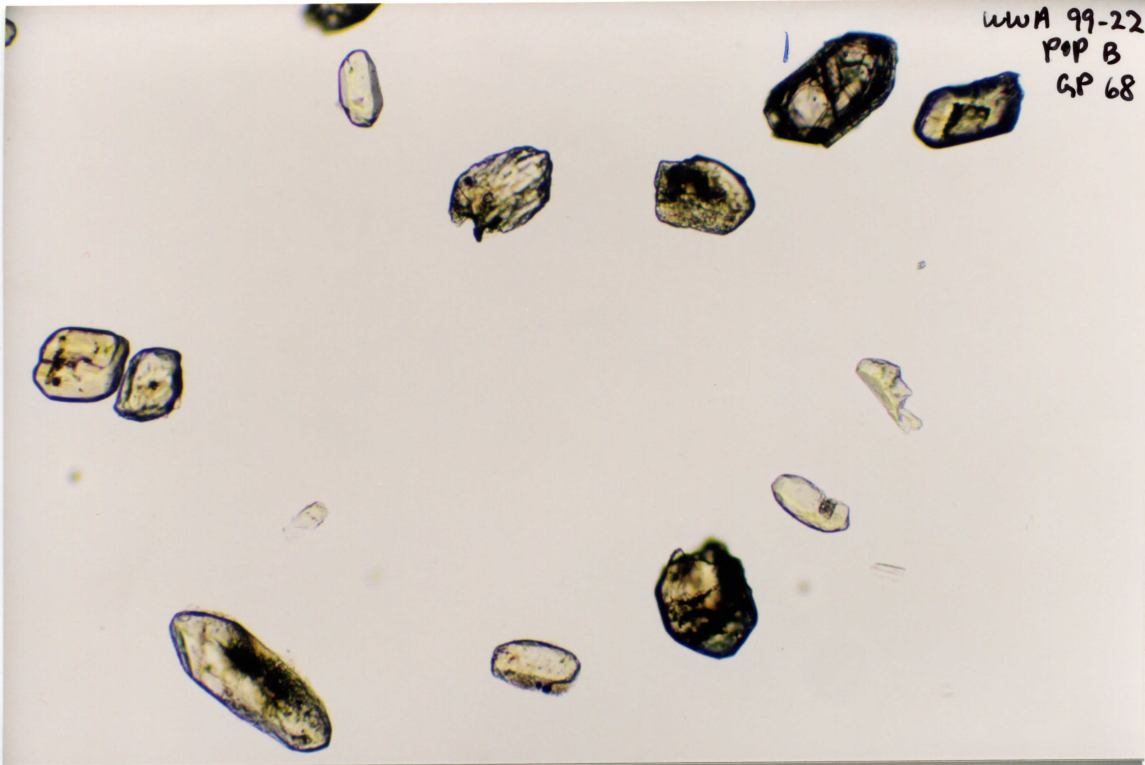
8



uWA 99-22  
pop B  
Grp 67

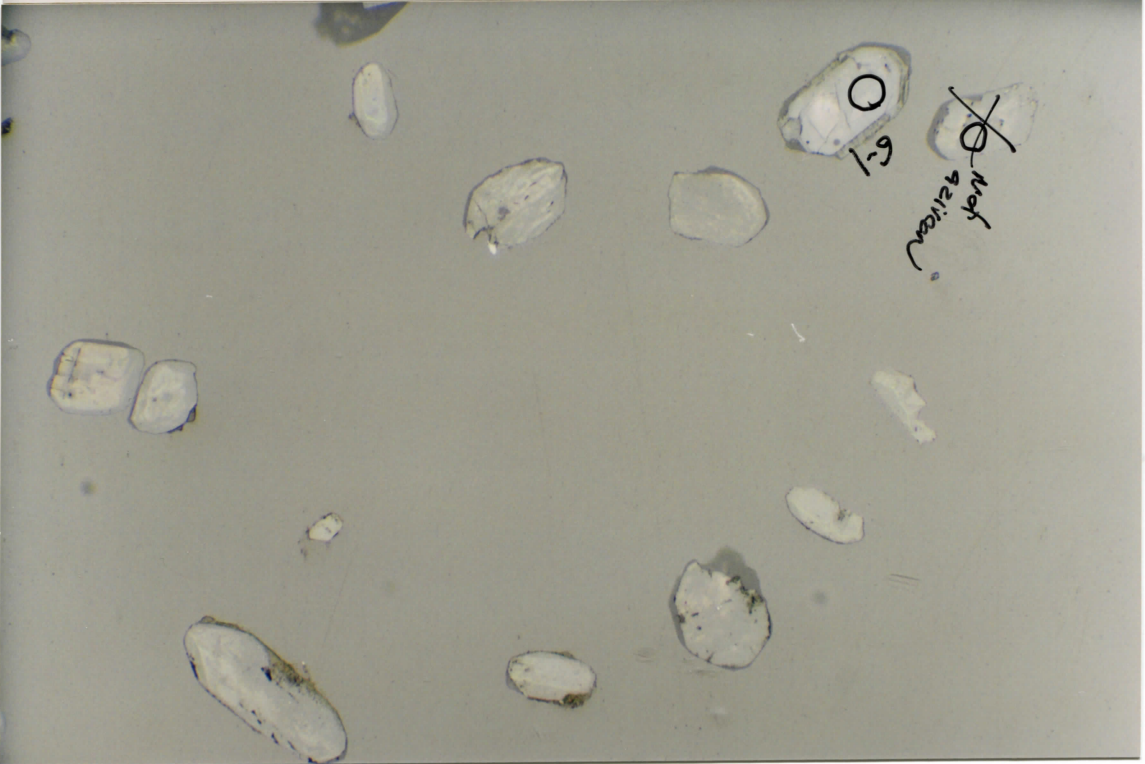


WMA 99-22  
POP B  
GP 68

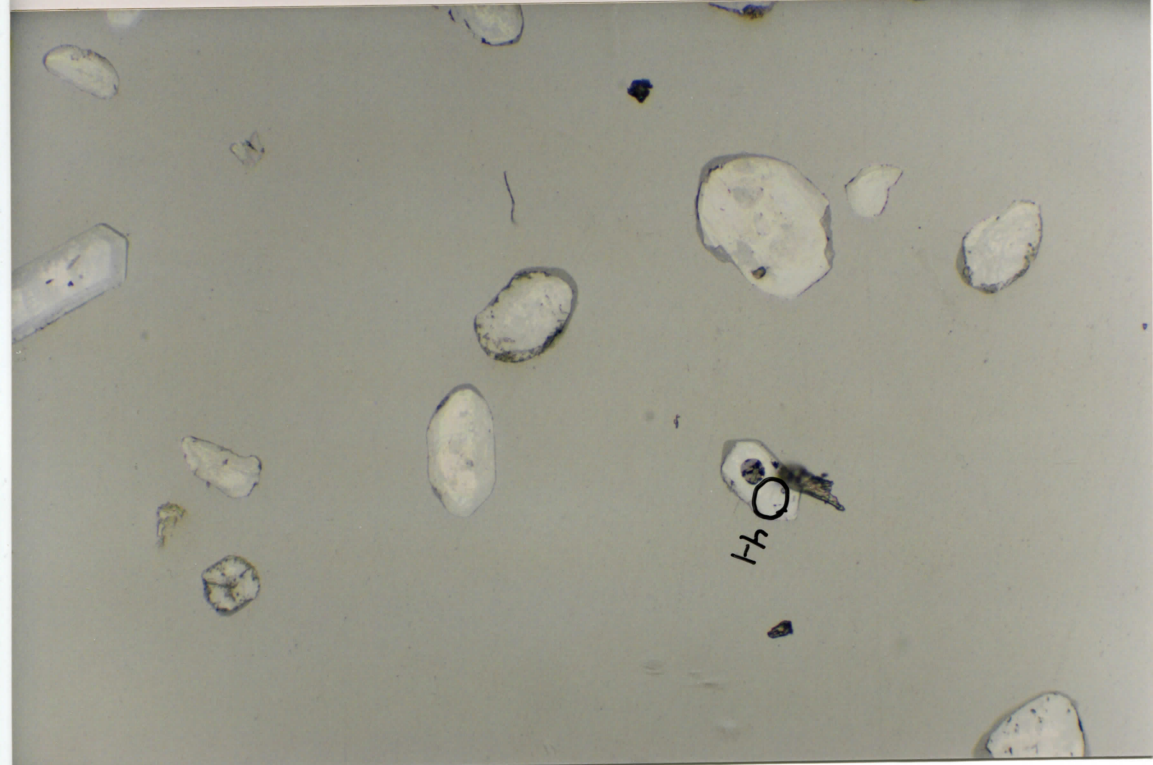
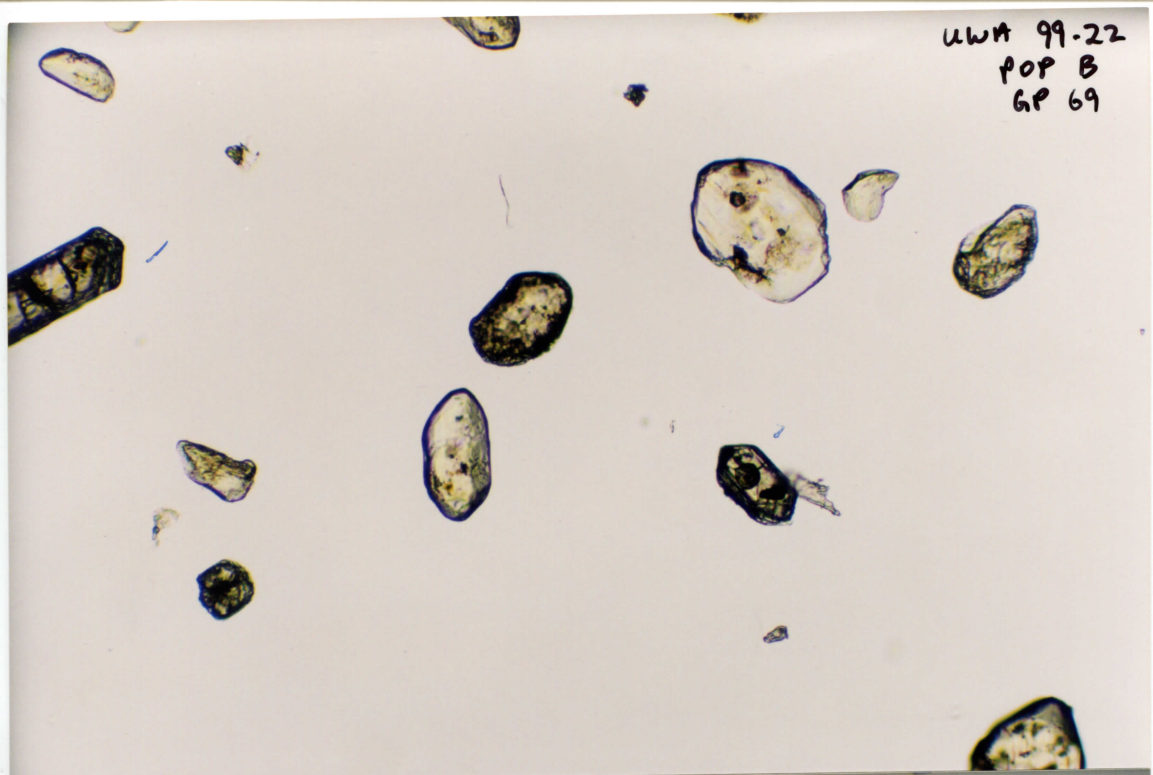


0  
6-1

~~WMA 99-22~~  
POP B

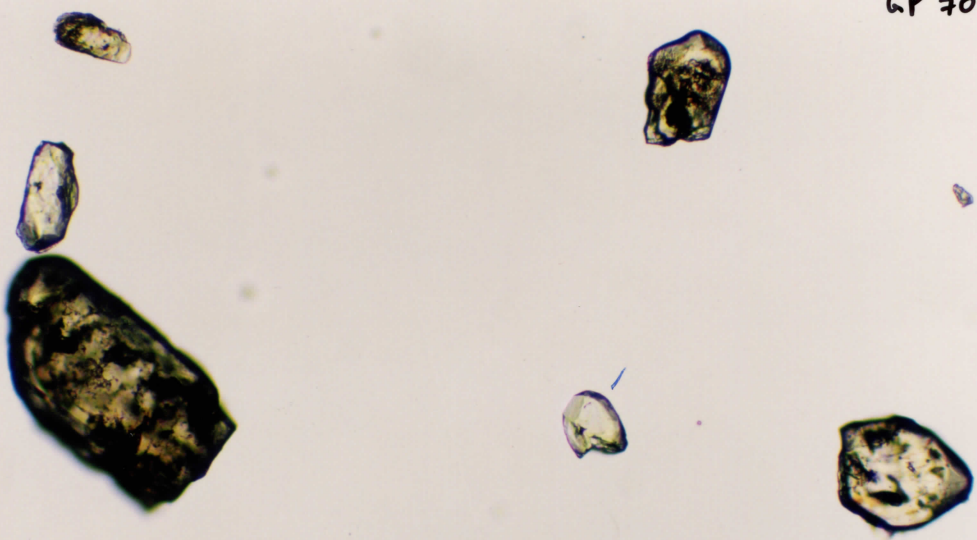


UWA 99-22  
POP B  
GP 69



H O

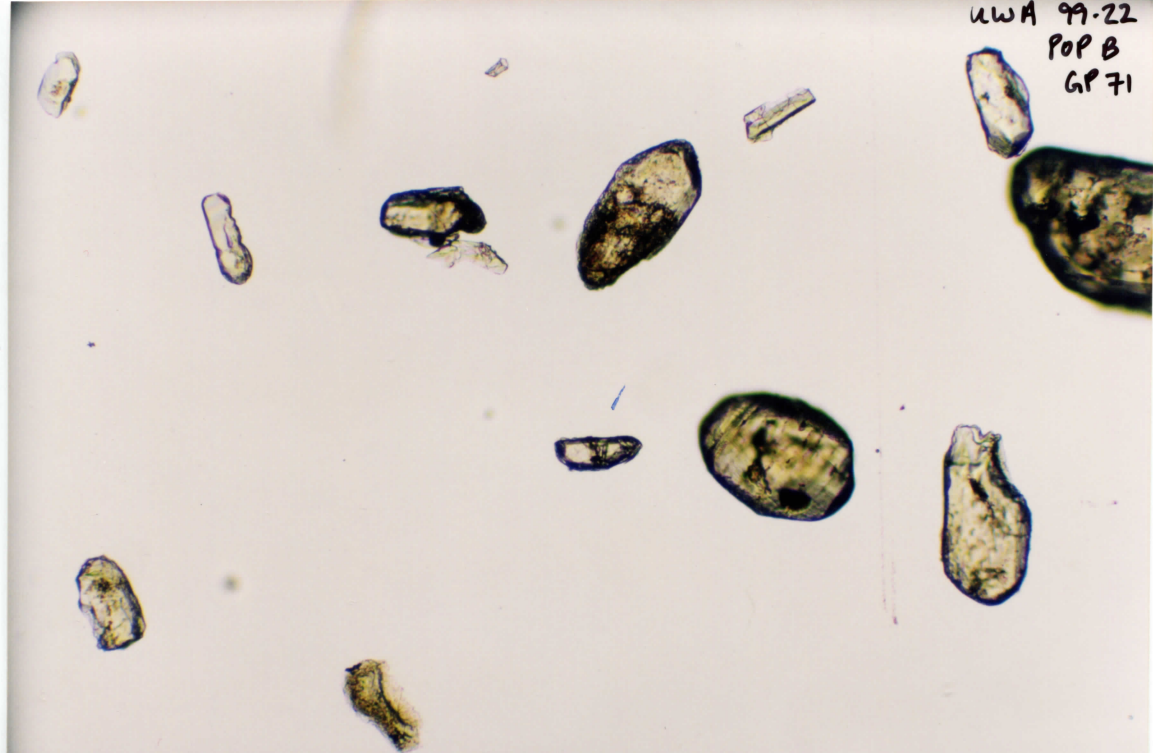
UWA 99-22  
POP B  
GP 70



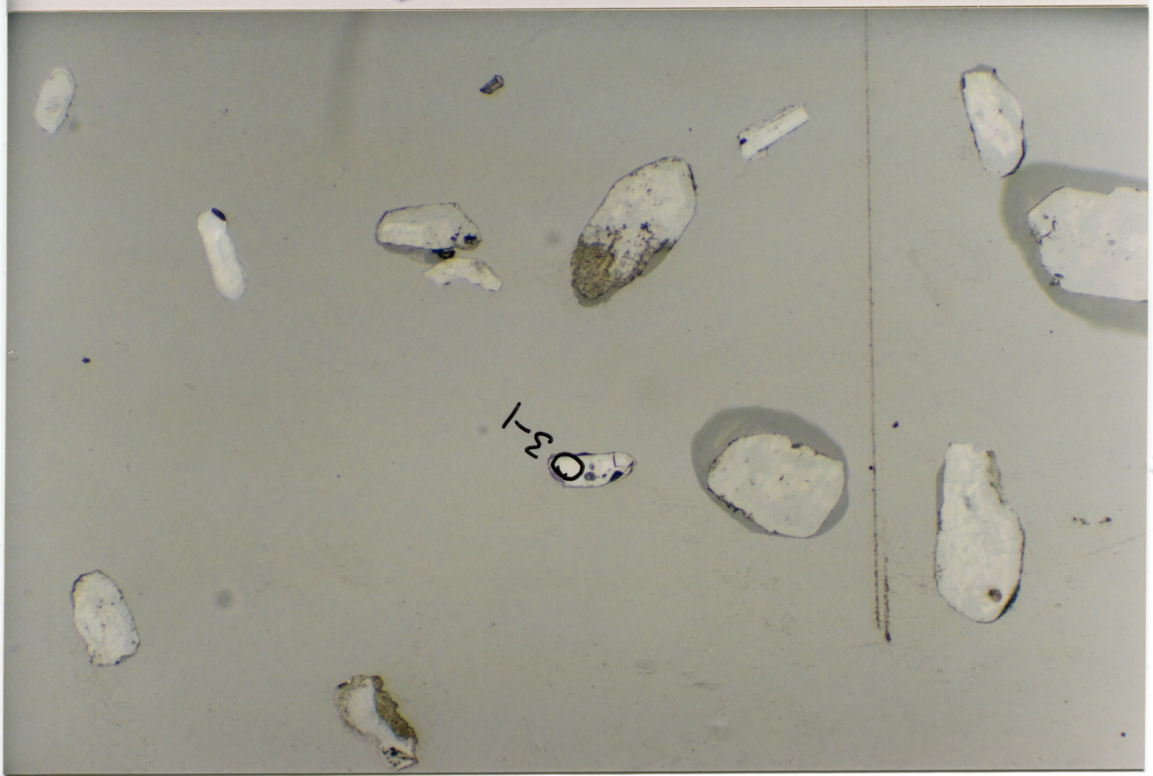
⊕  
not a  
zinc



UWA 99-22  
POP B  
GP 71



Q-3-1

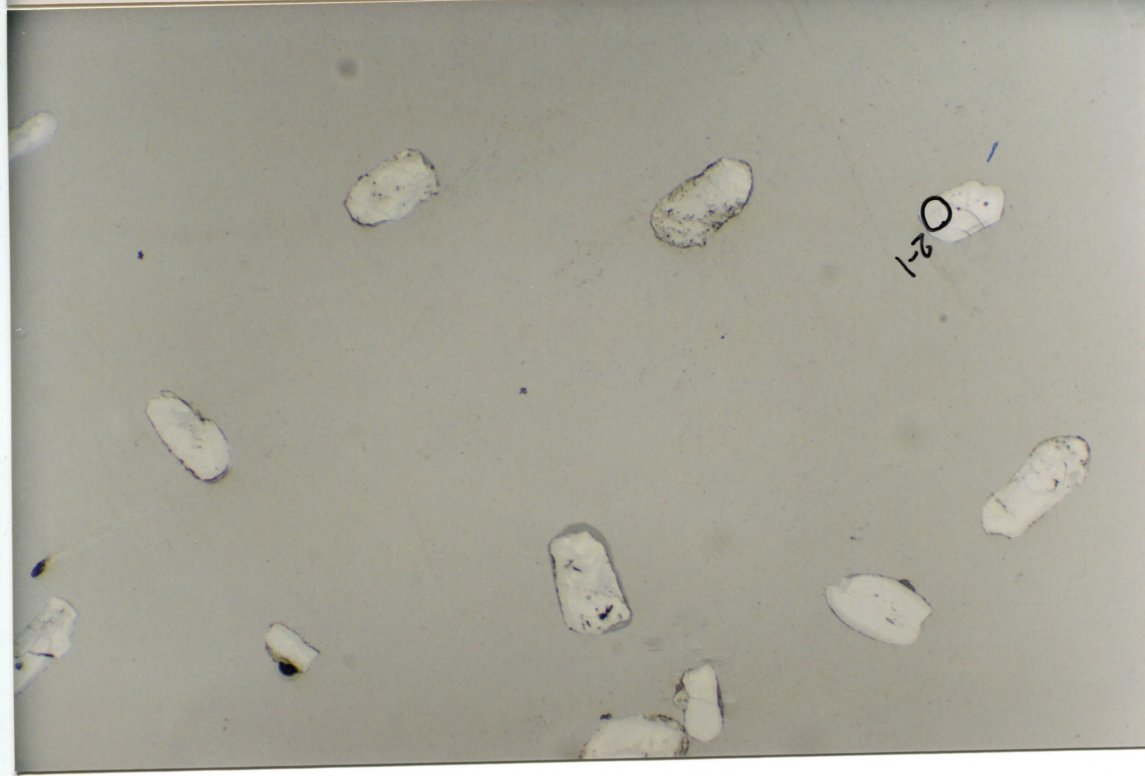
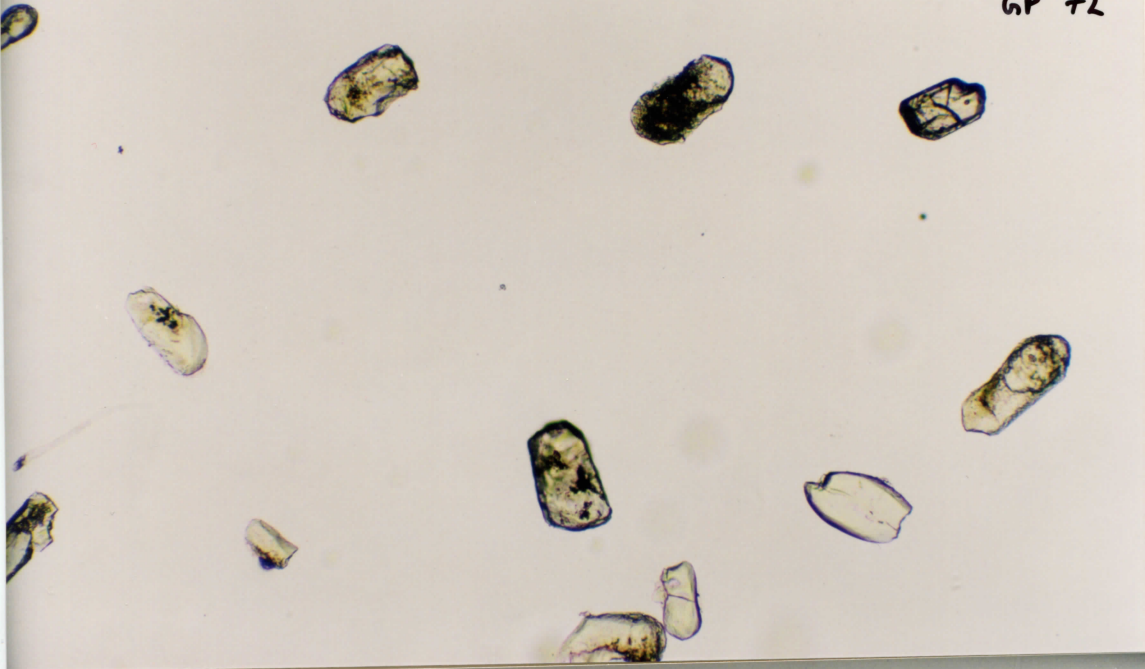




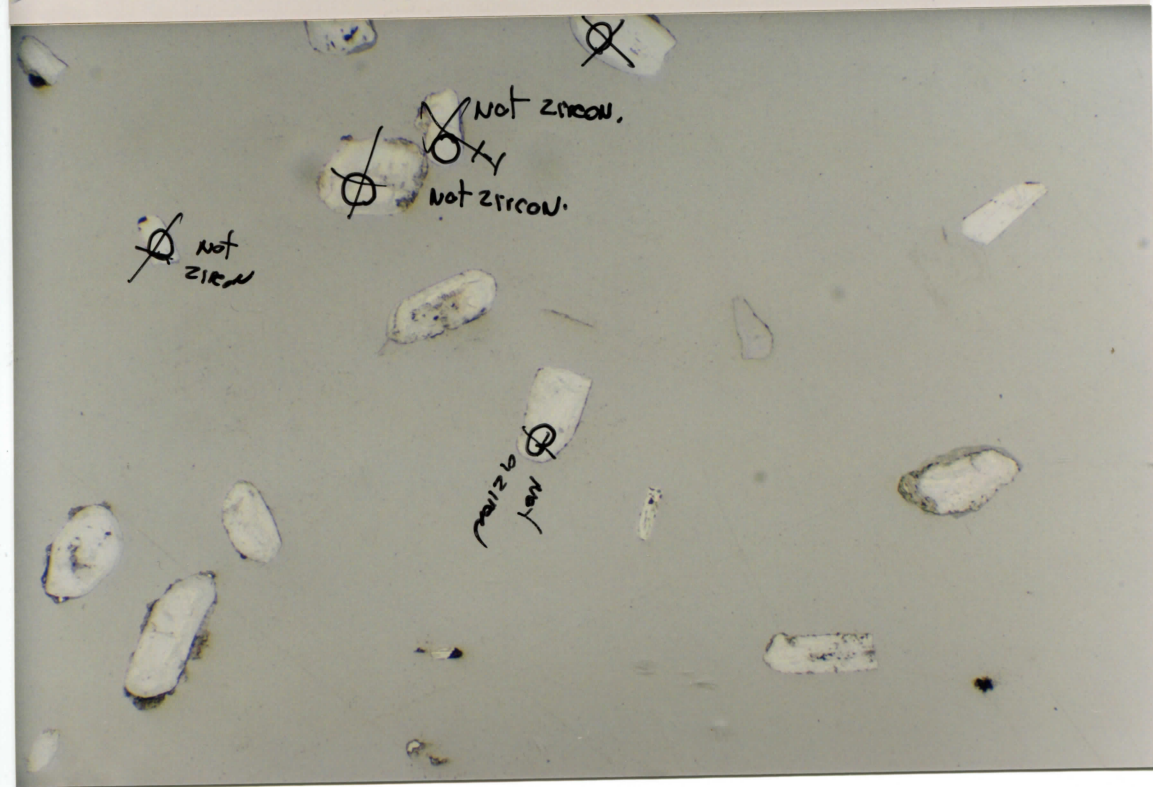
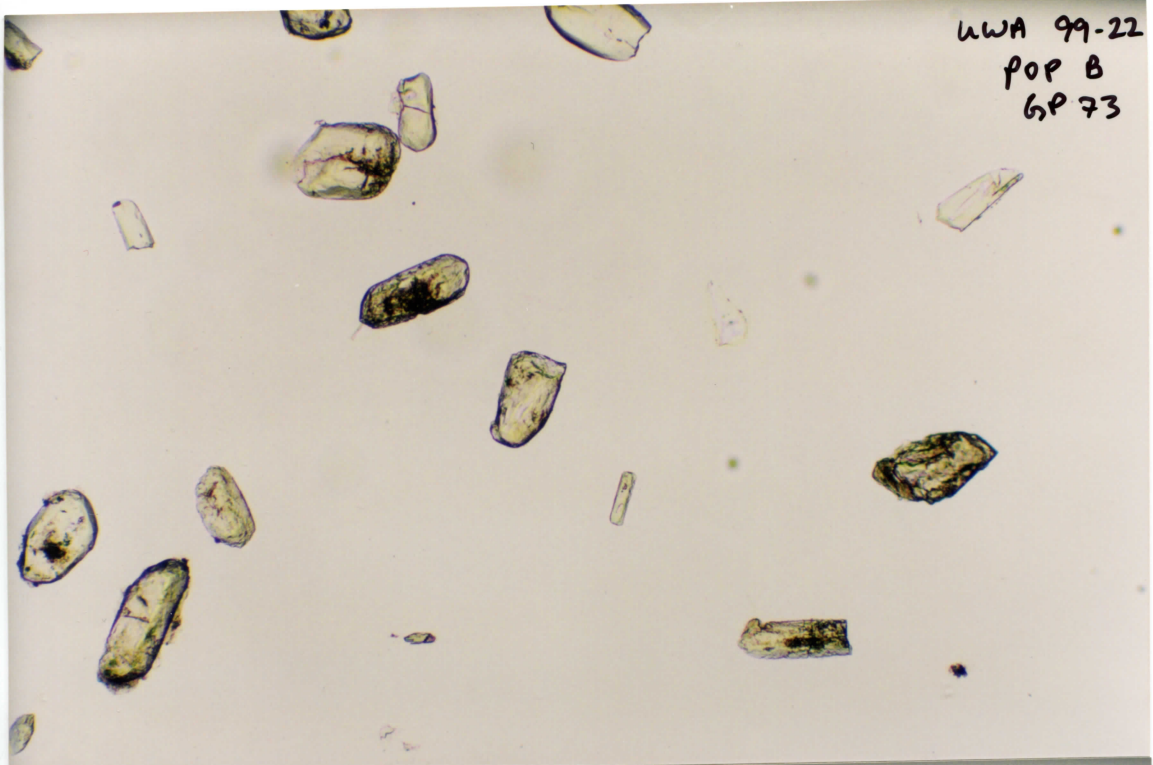
UWA 99-22

POP B

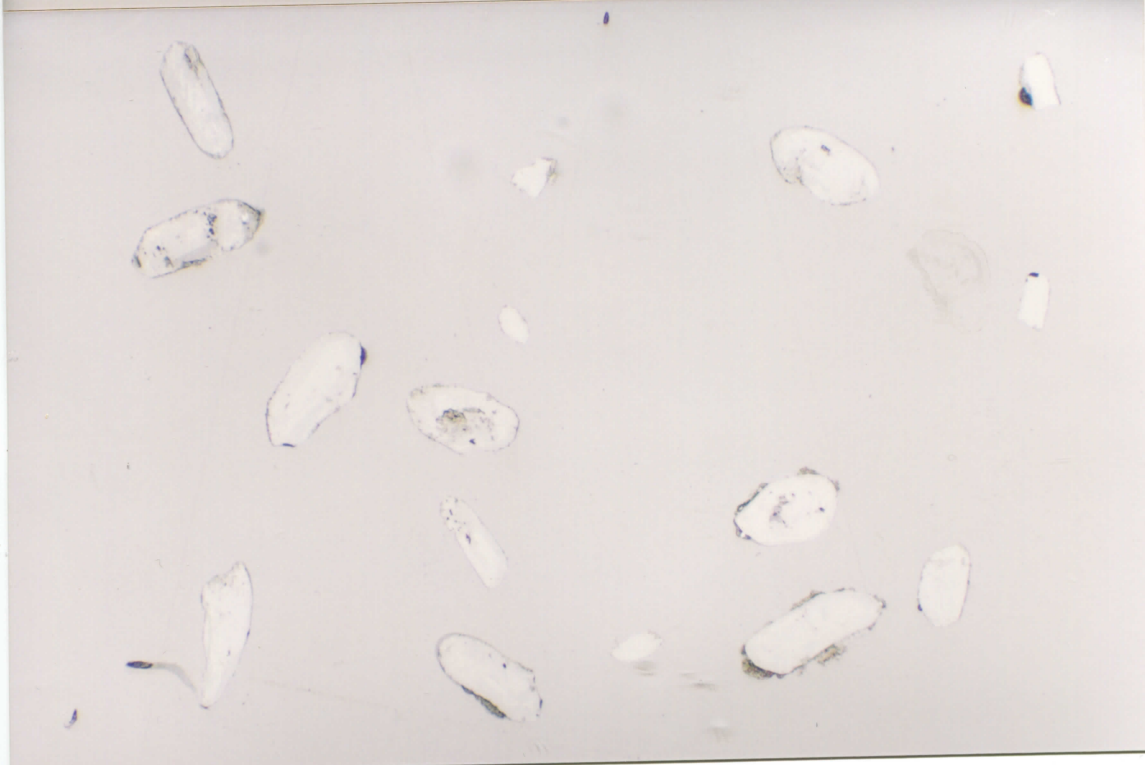
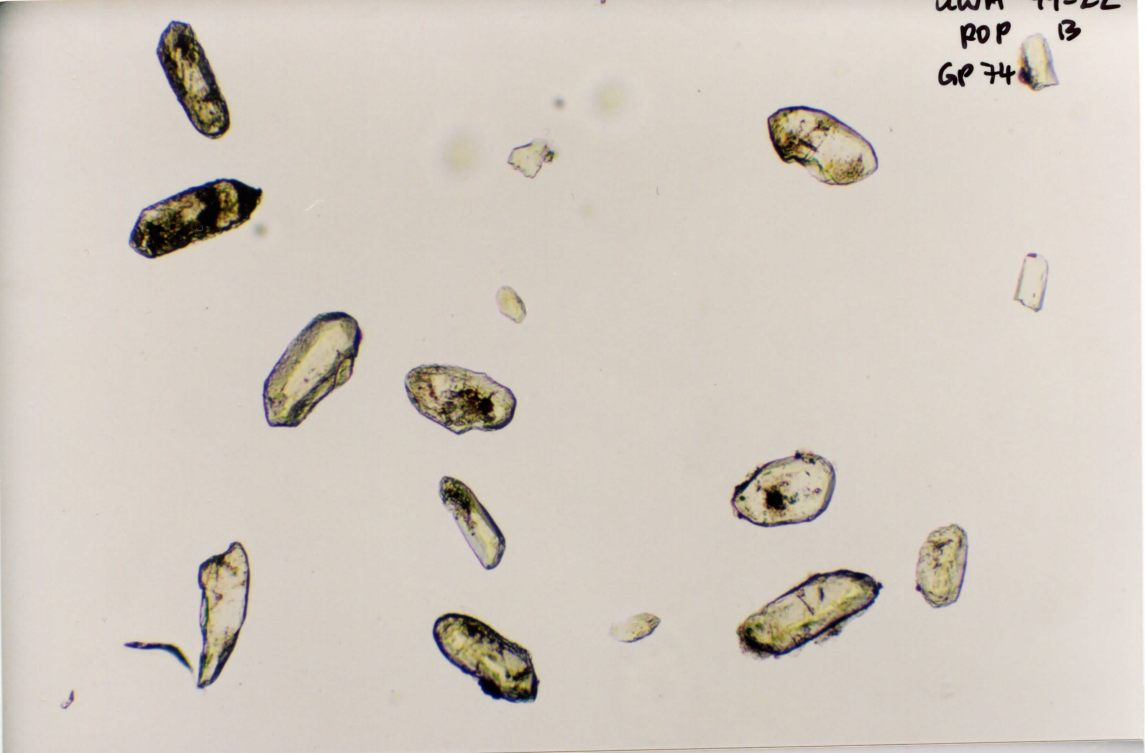
GP 72



UWA 99-22  
POP B  
6P 73

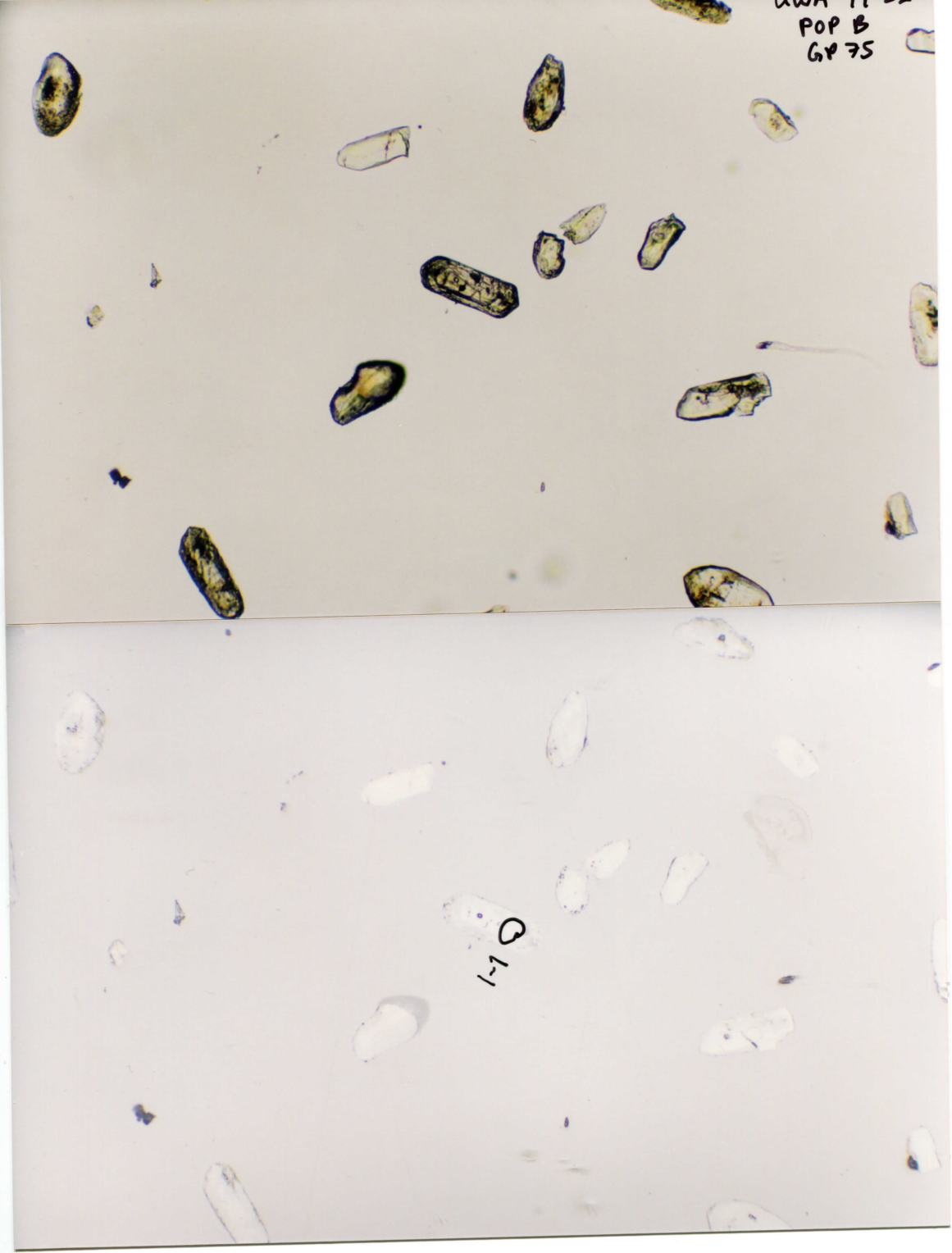


UWA 99-22  
POP 13  
GP 74

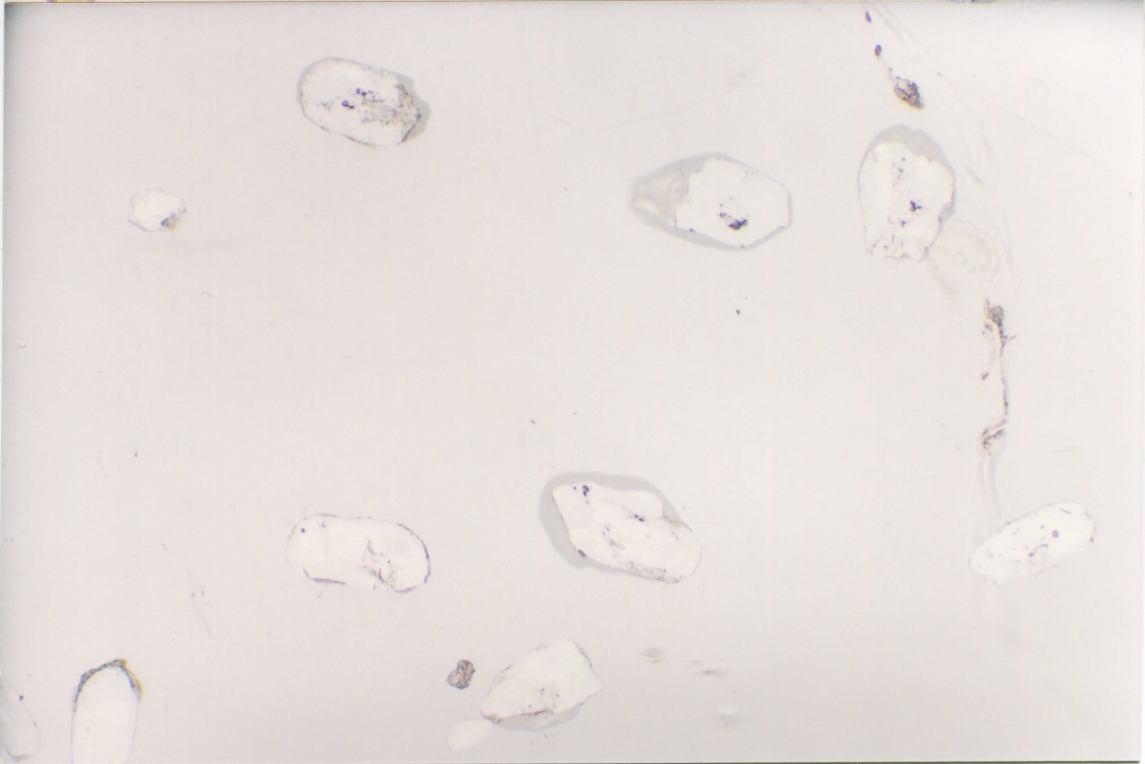
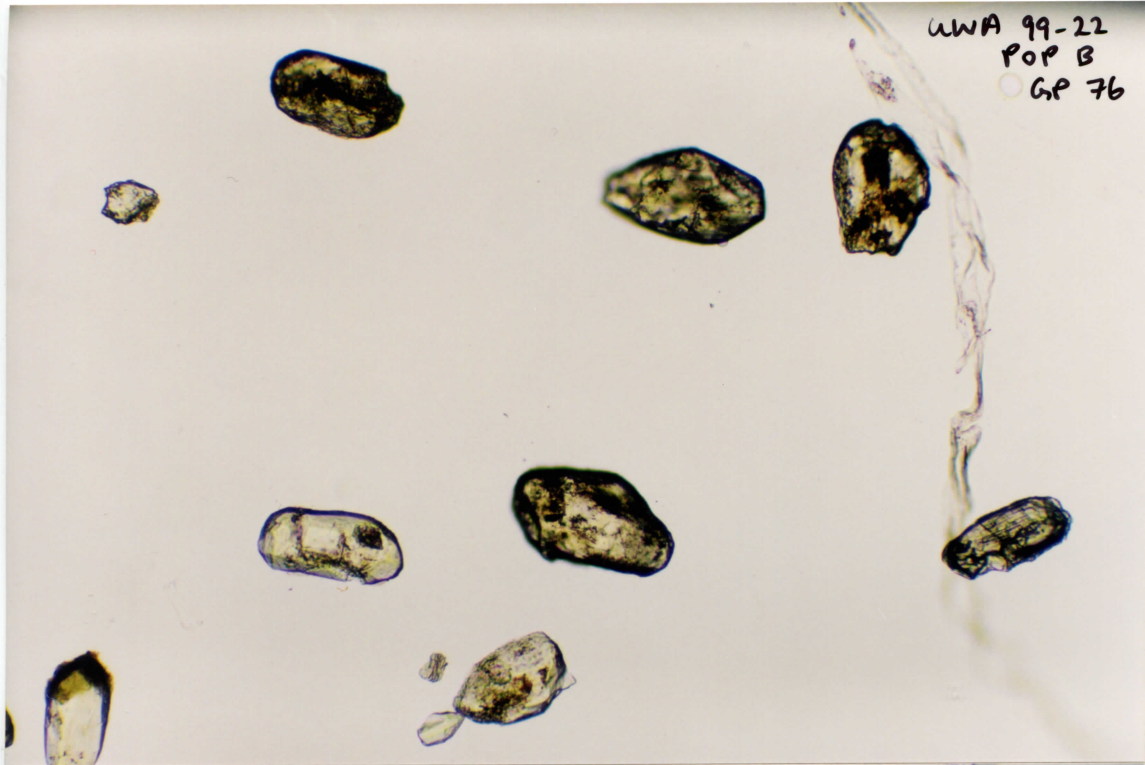


UWA 99-22  
POP B  
GP 75

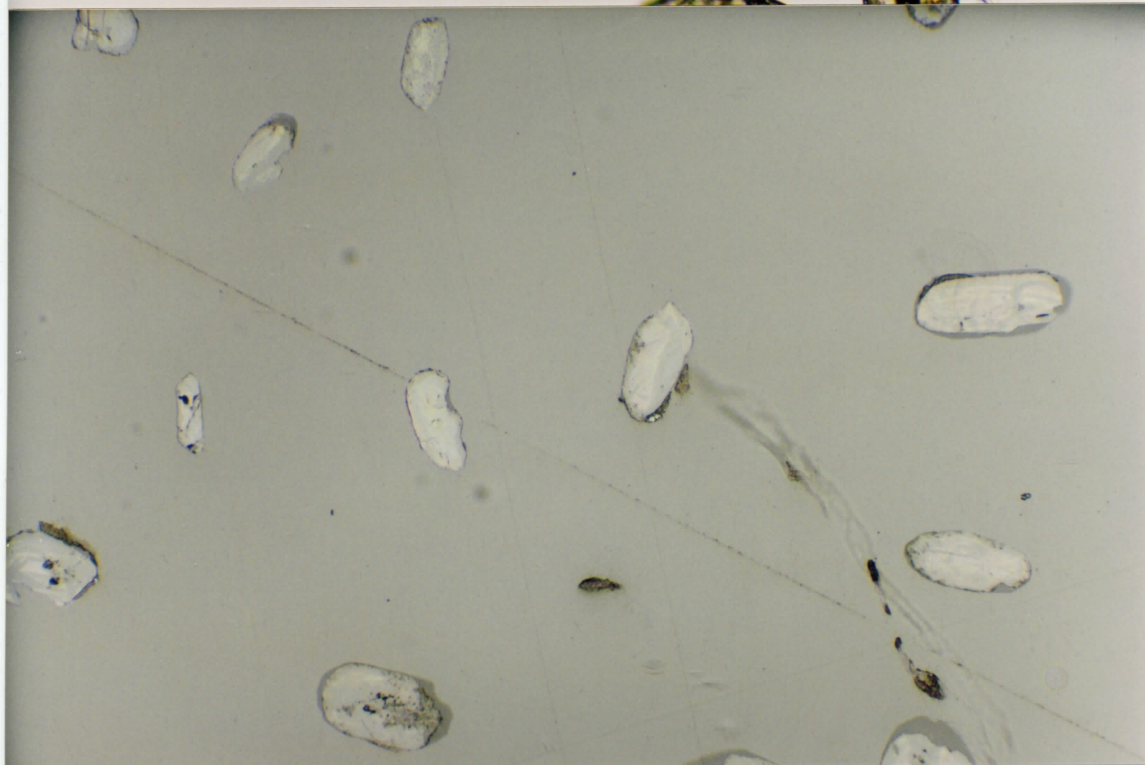
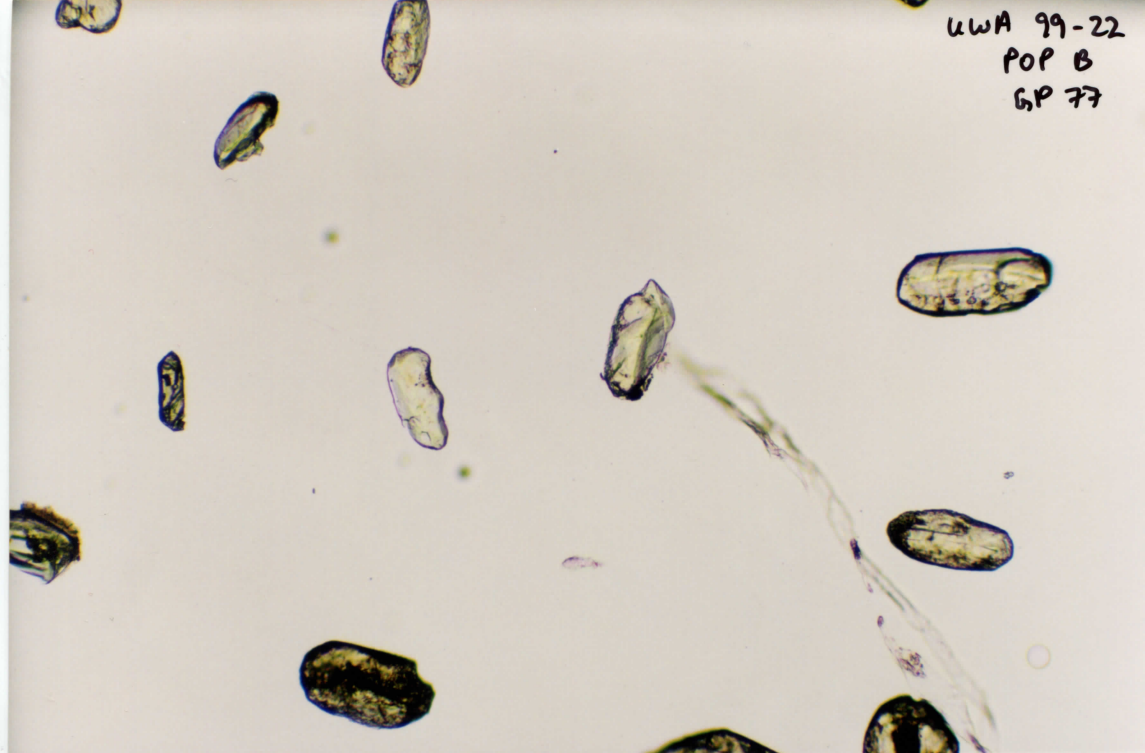
Q 41



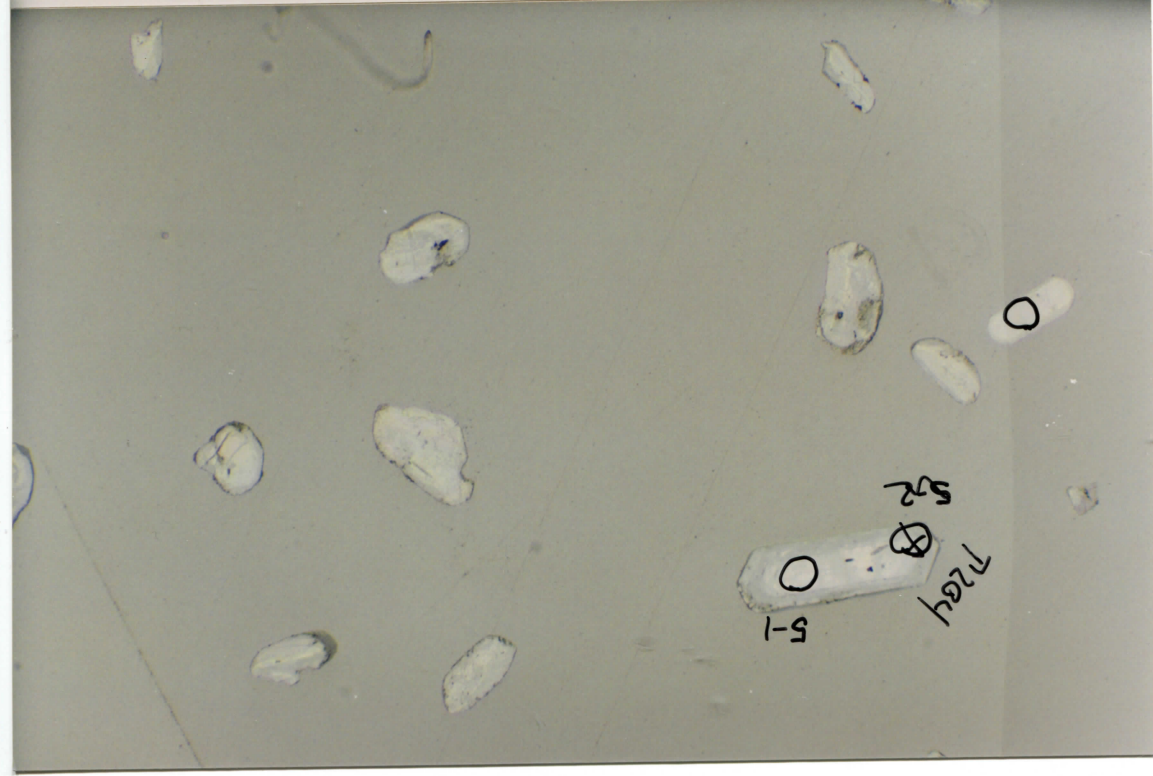
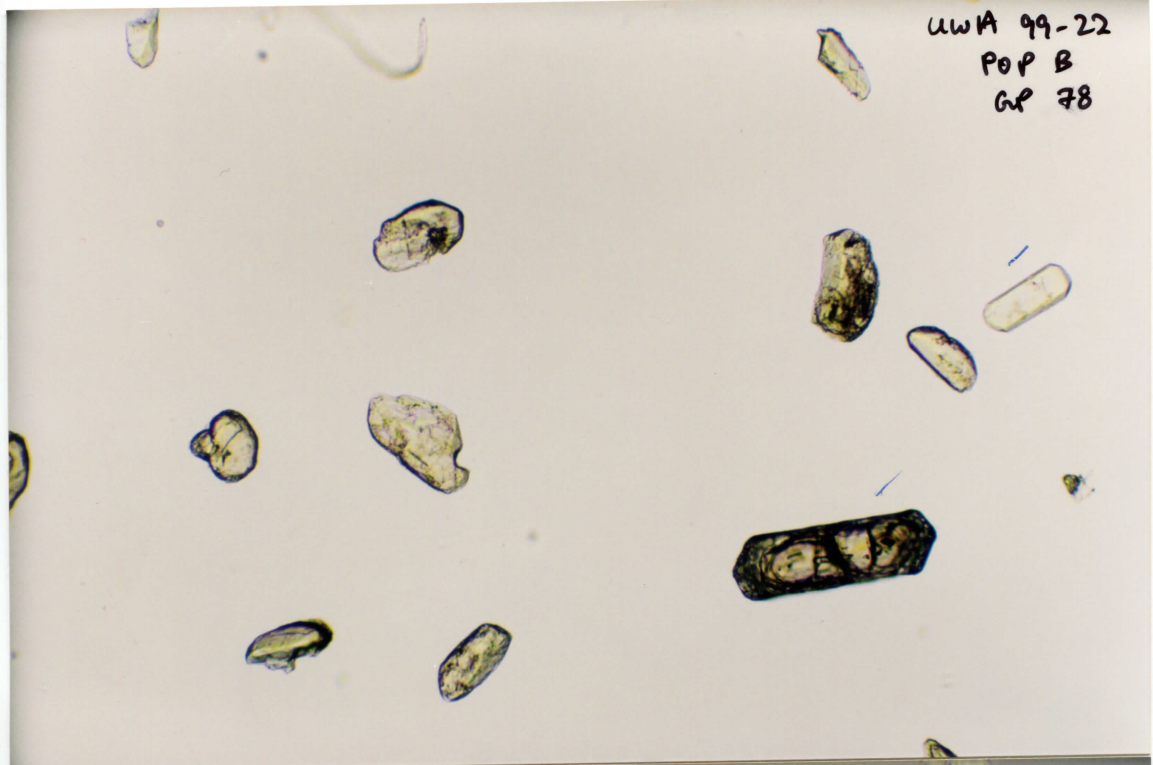
UWA 99-22  
POP B  
GP 76



UWA 99-22  
POP B  
GP 77

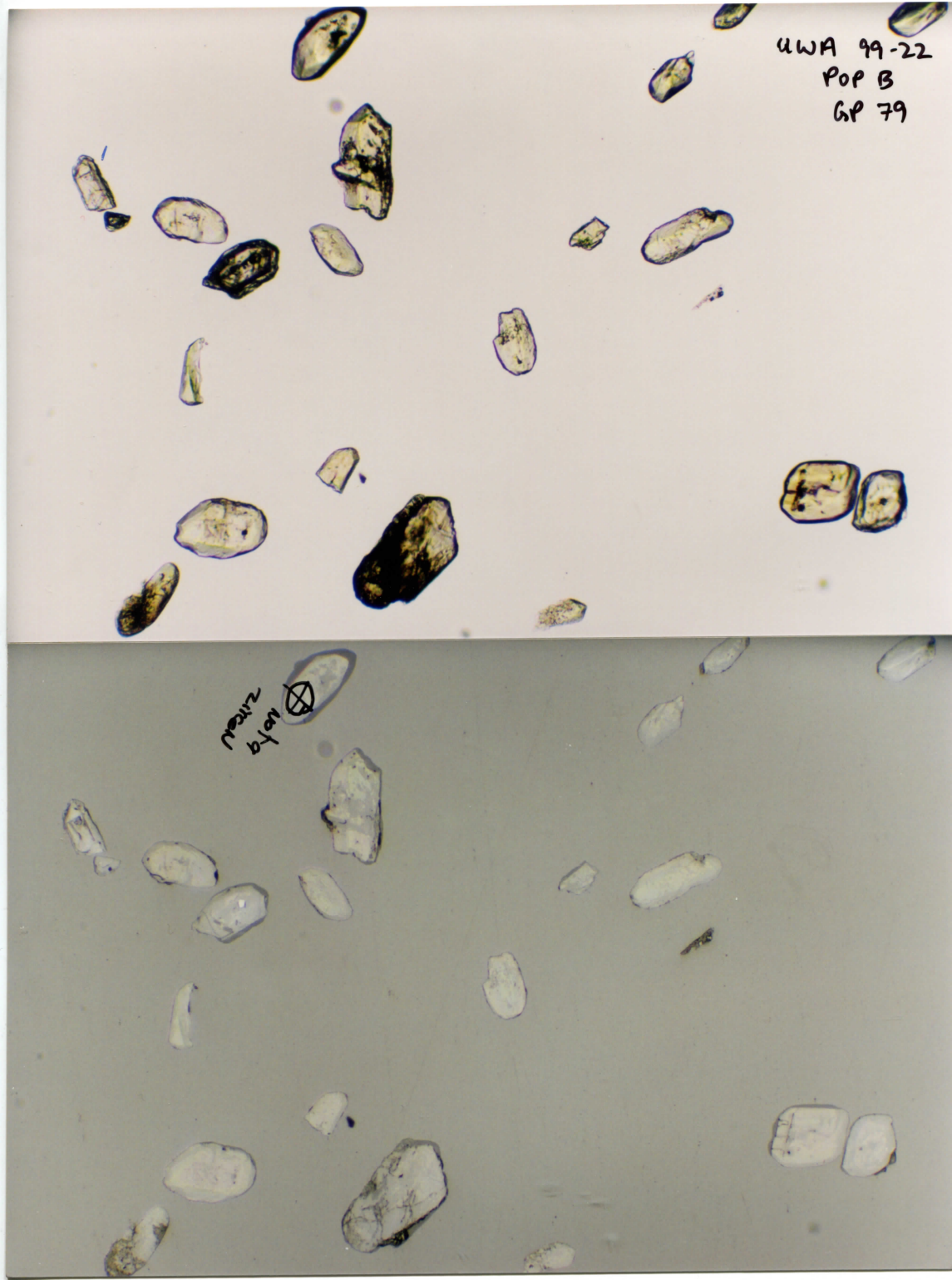


UWA 99-22  
POP B  
GP 78



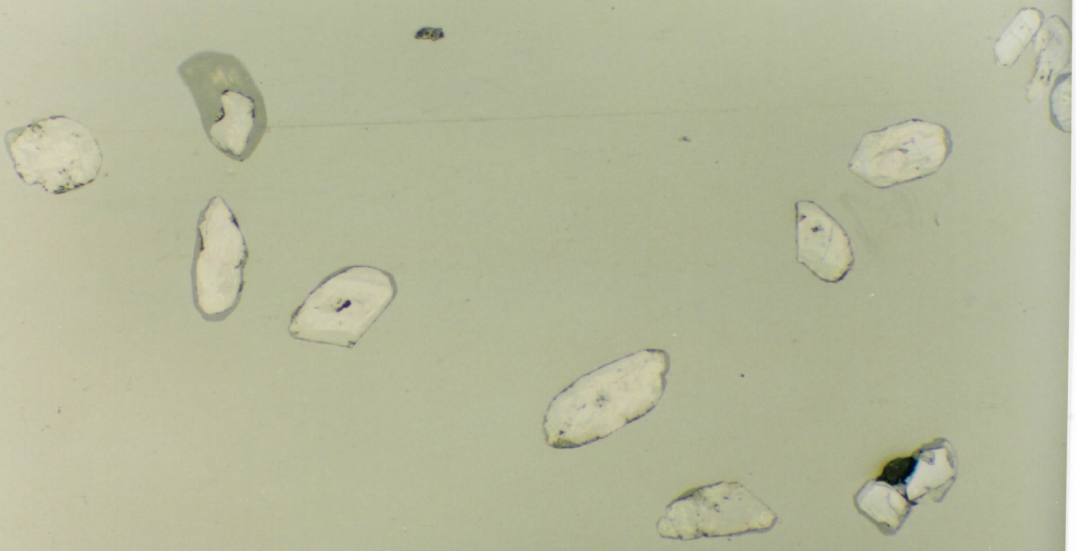
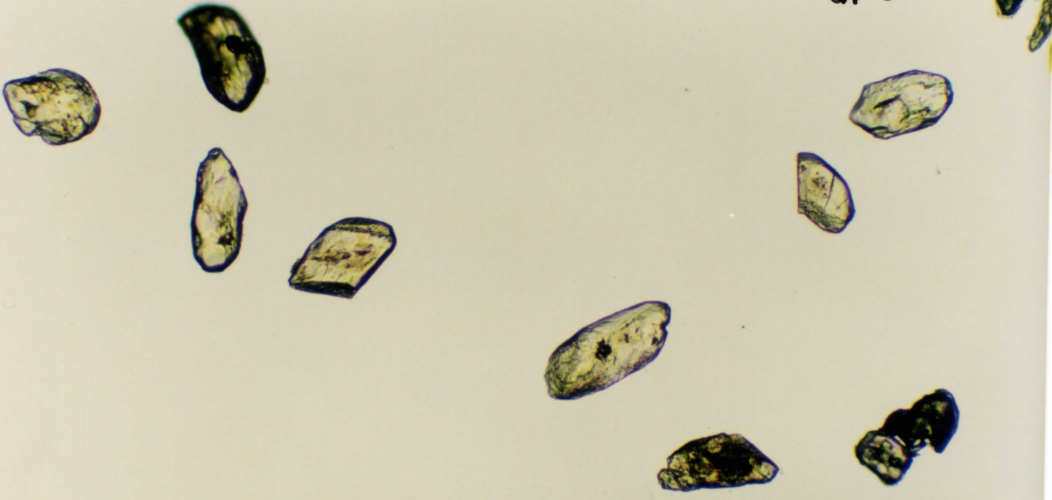
UWA 99-22  
POP B  
GP 79

meur  
byon ⊕

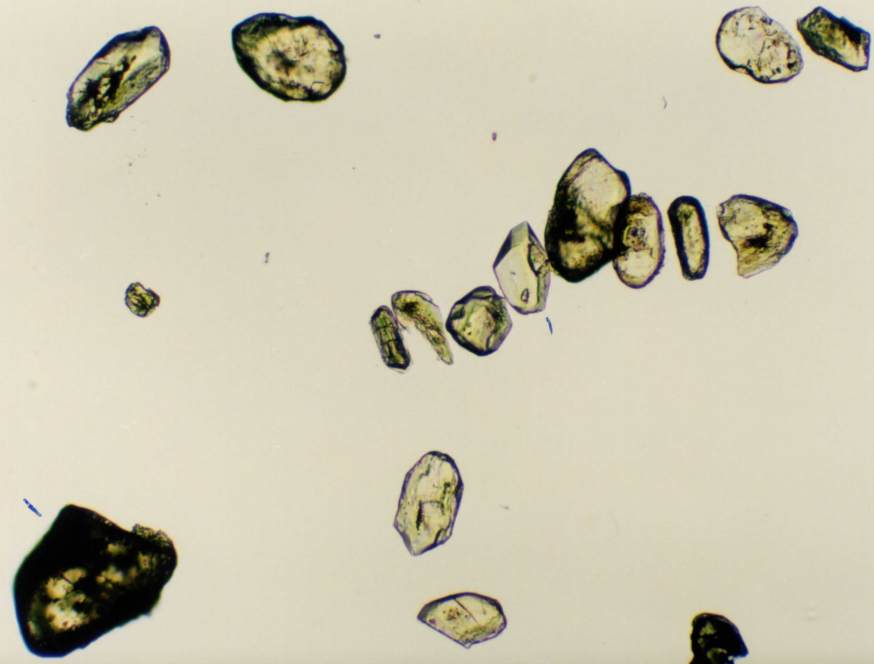




UWA 99-22  
POP B  
GP 80



UWA 99-22  
POP B  
GP81

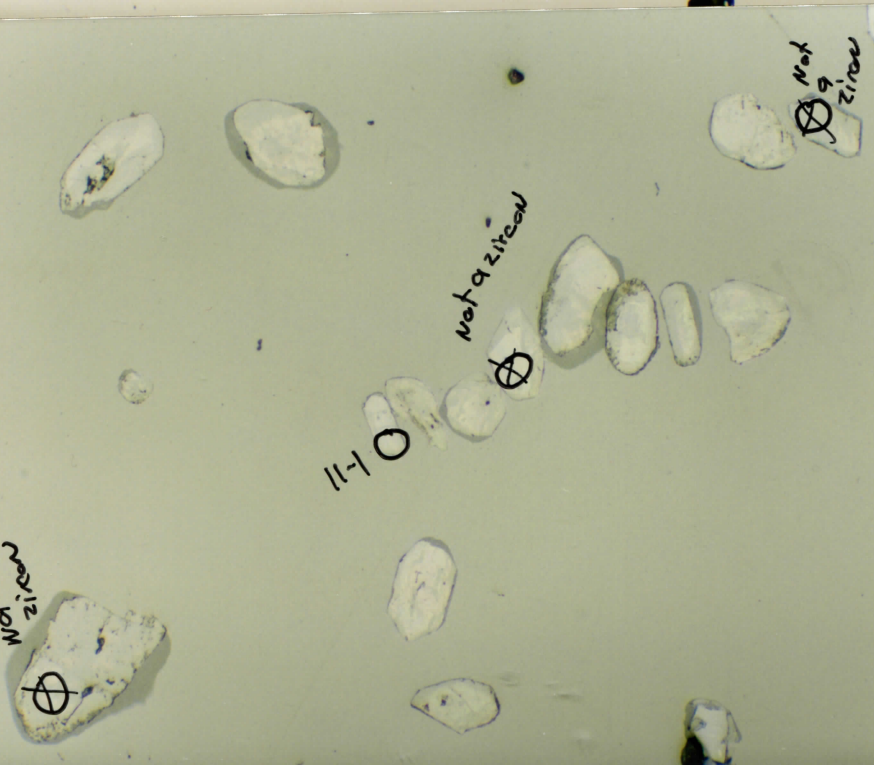


Not  
Zircon

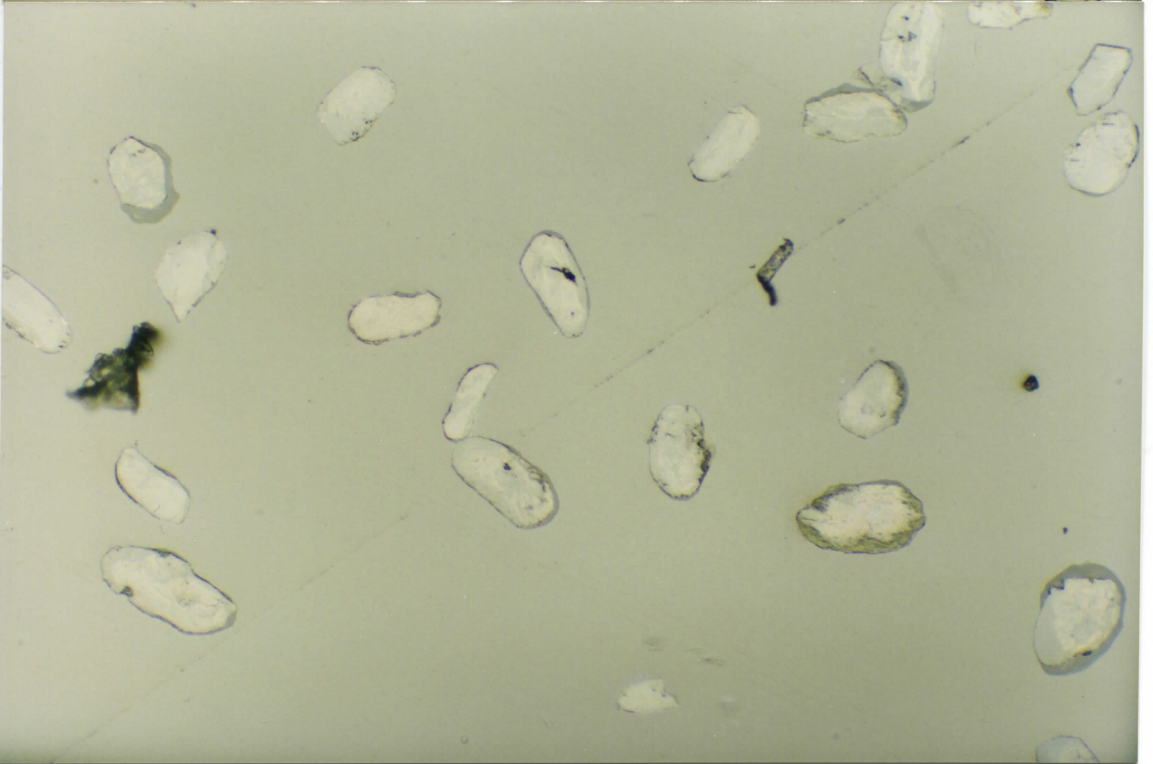
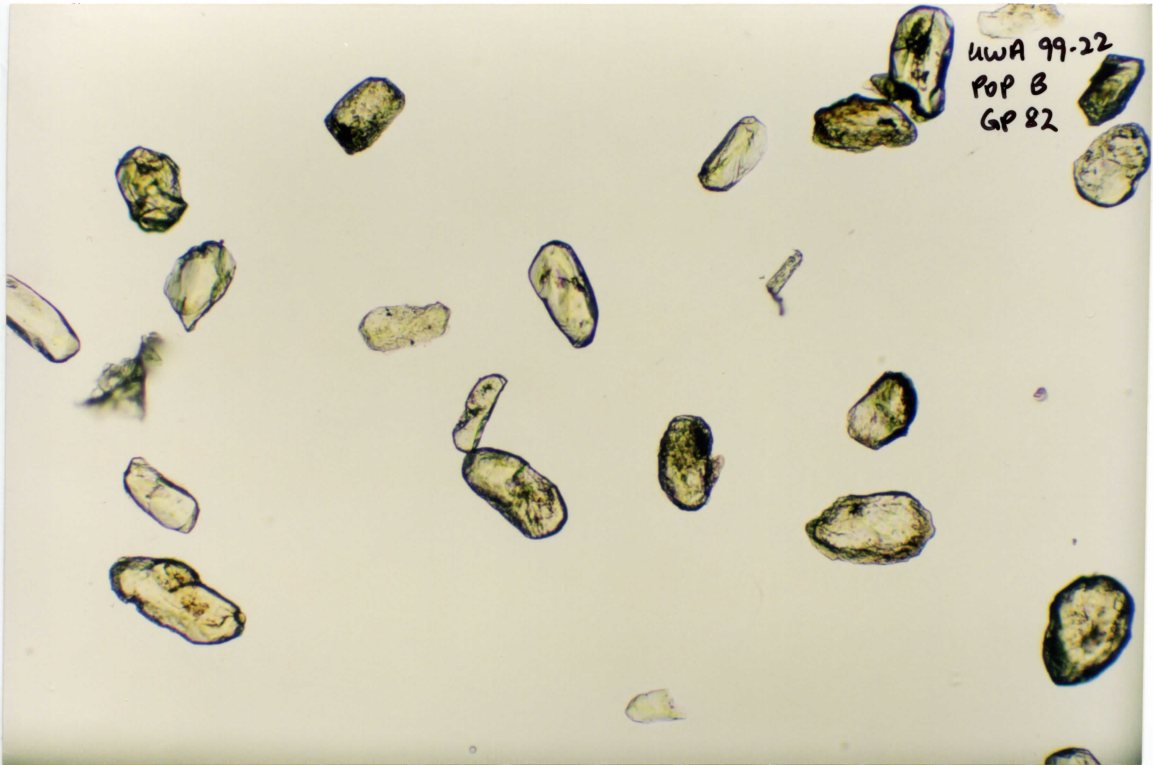
not a zircon

11-1

not  
Zircon



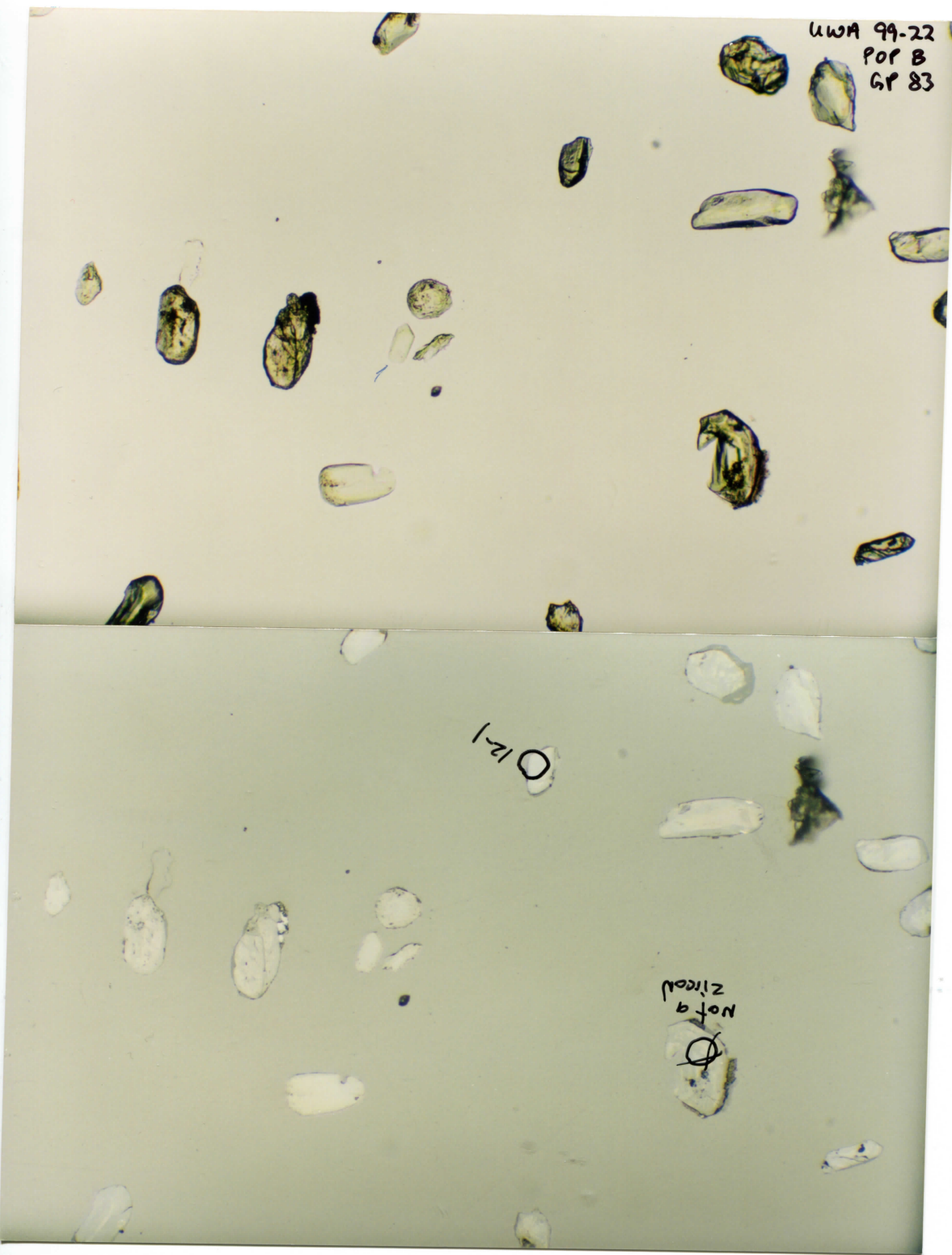
UWA 99-22  
POP B  
GP 82



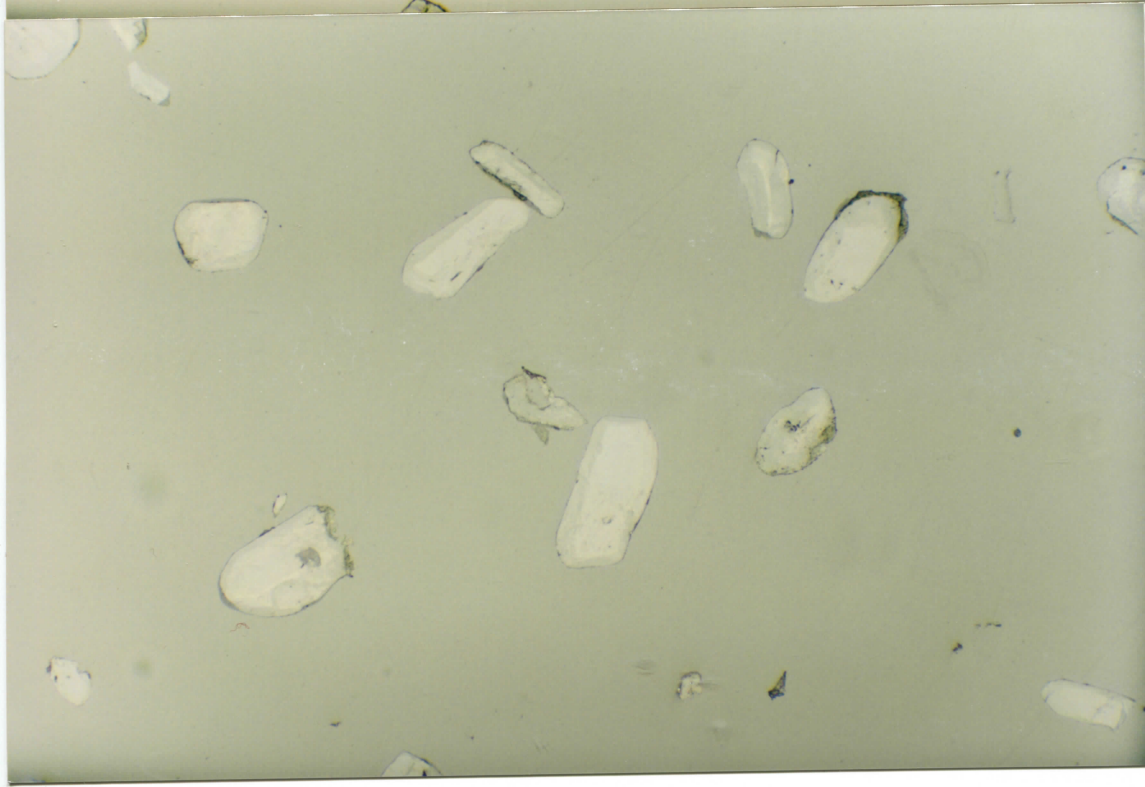
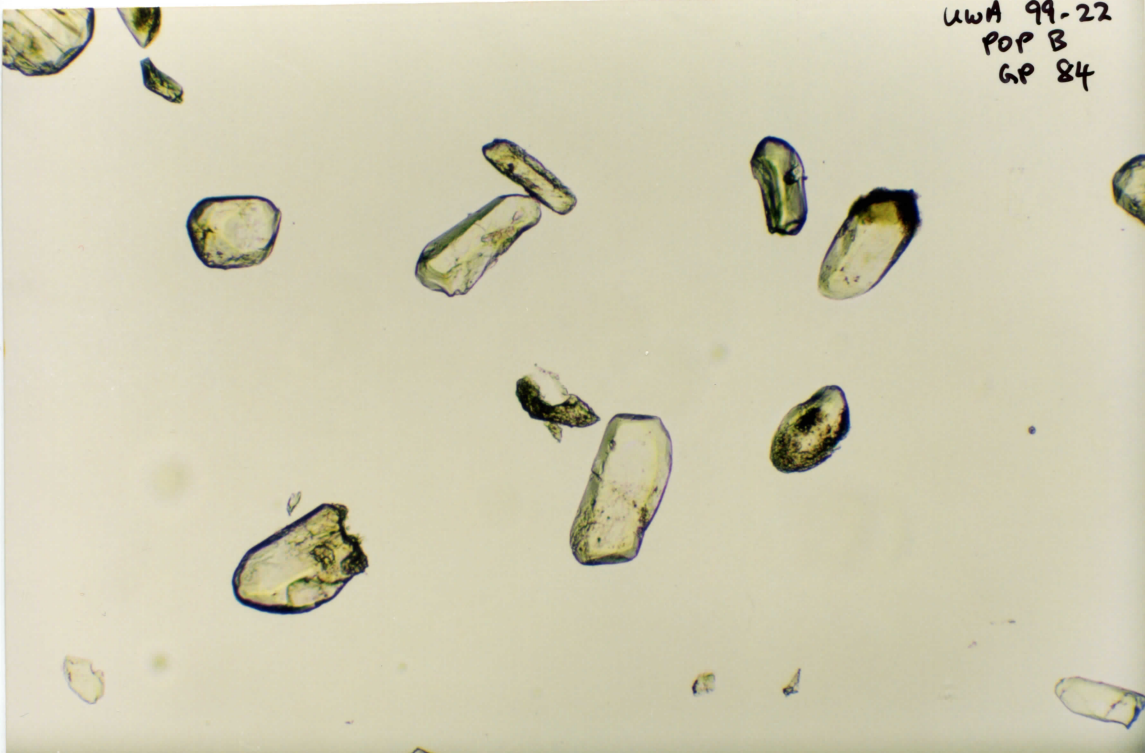
UWA 99-22  
POP B  
GP 83

O 12-1

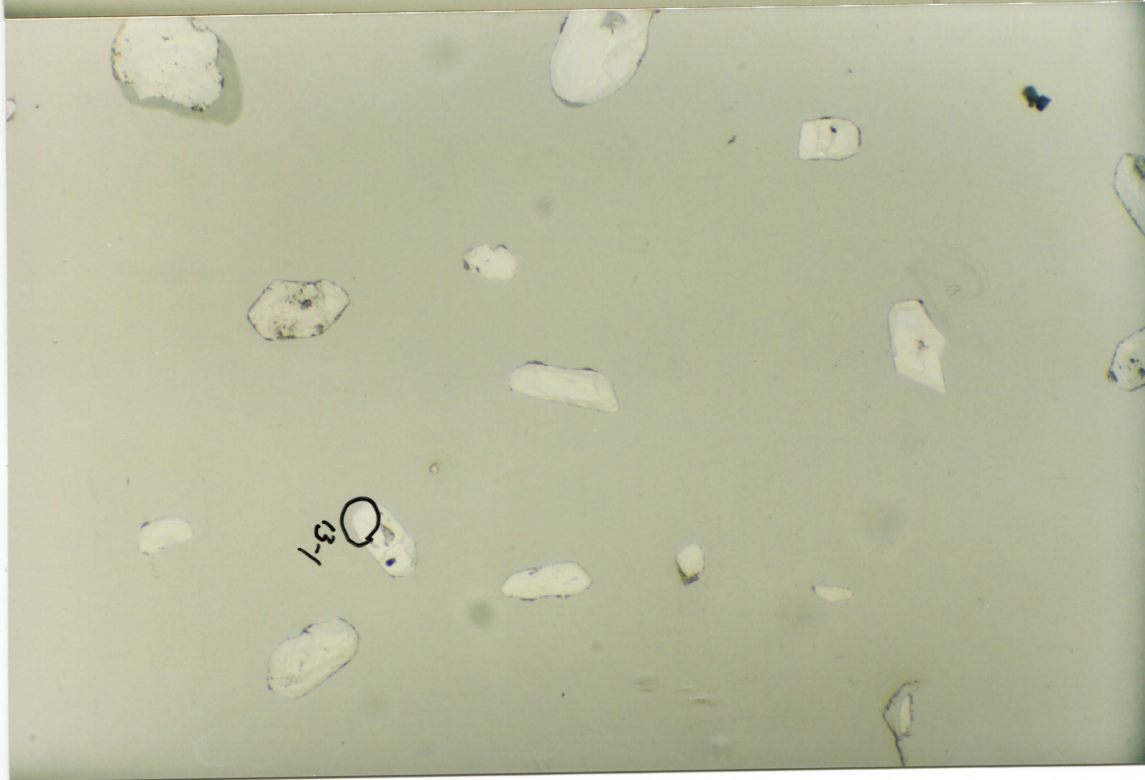
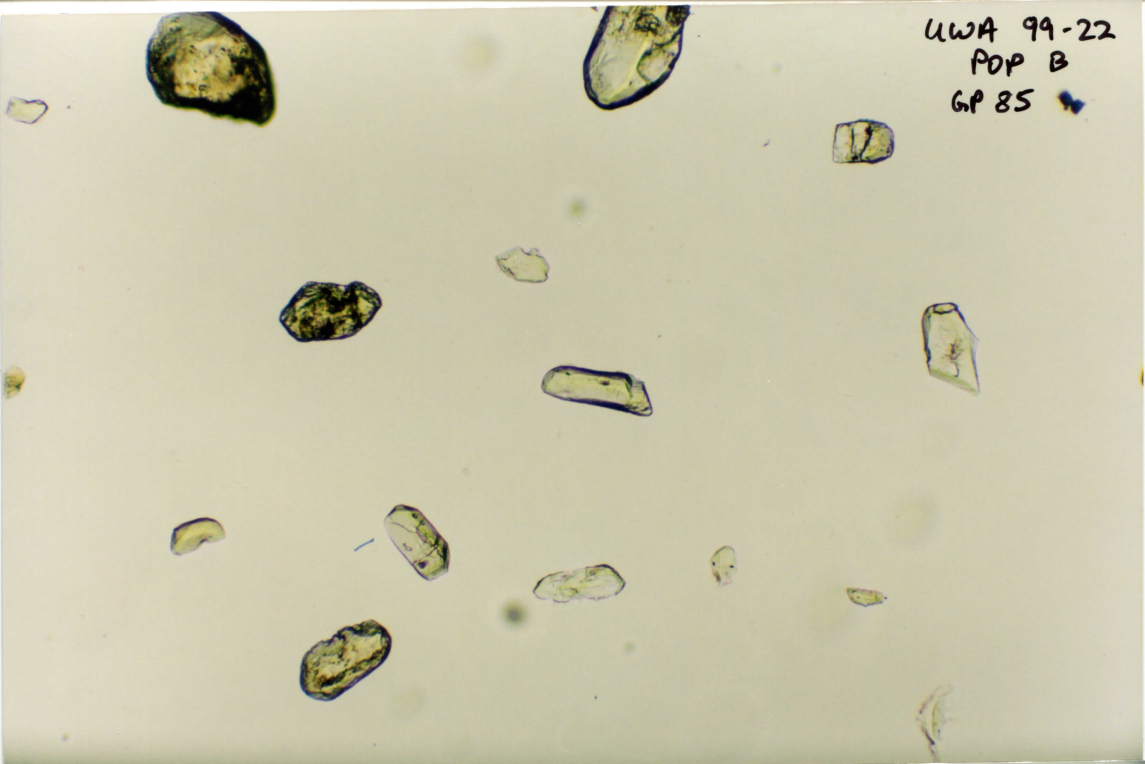
Not a  
Zircon



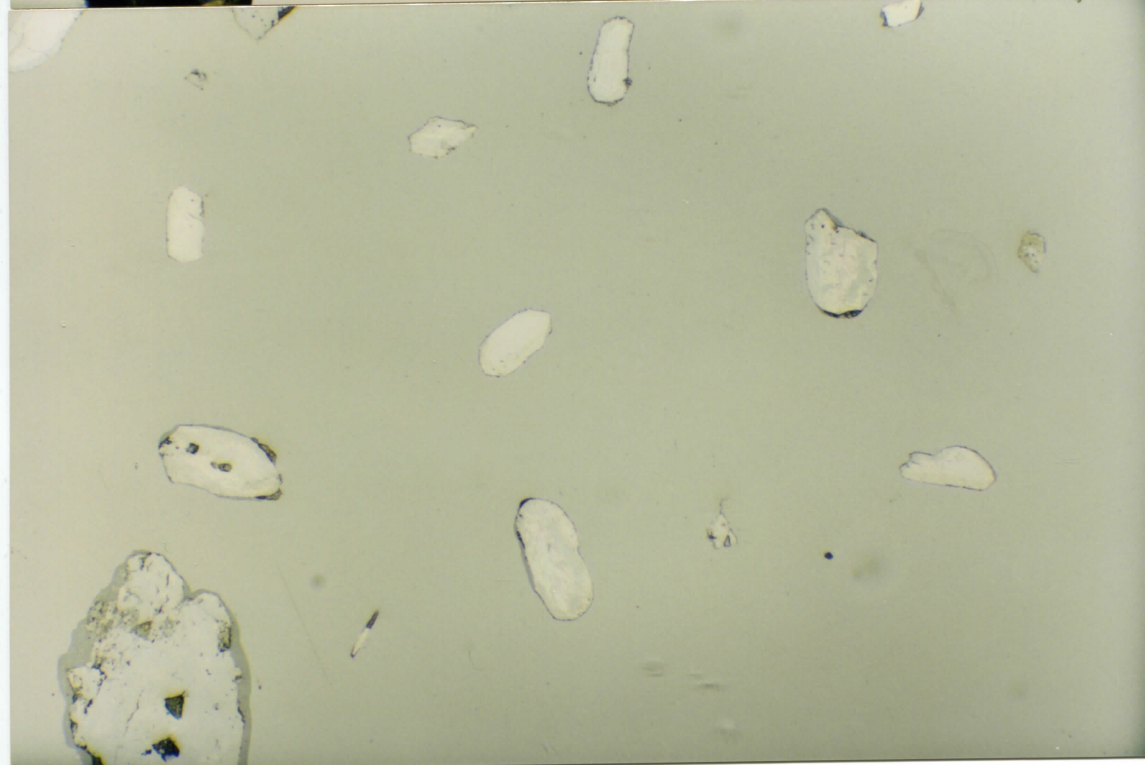
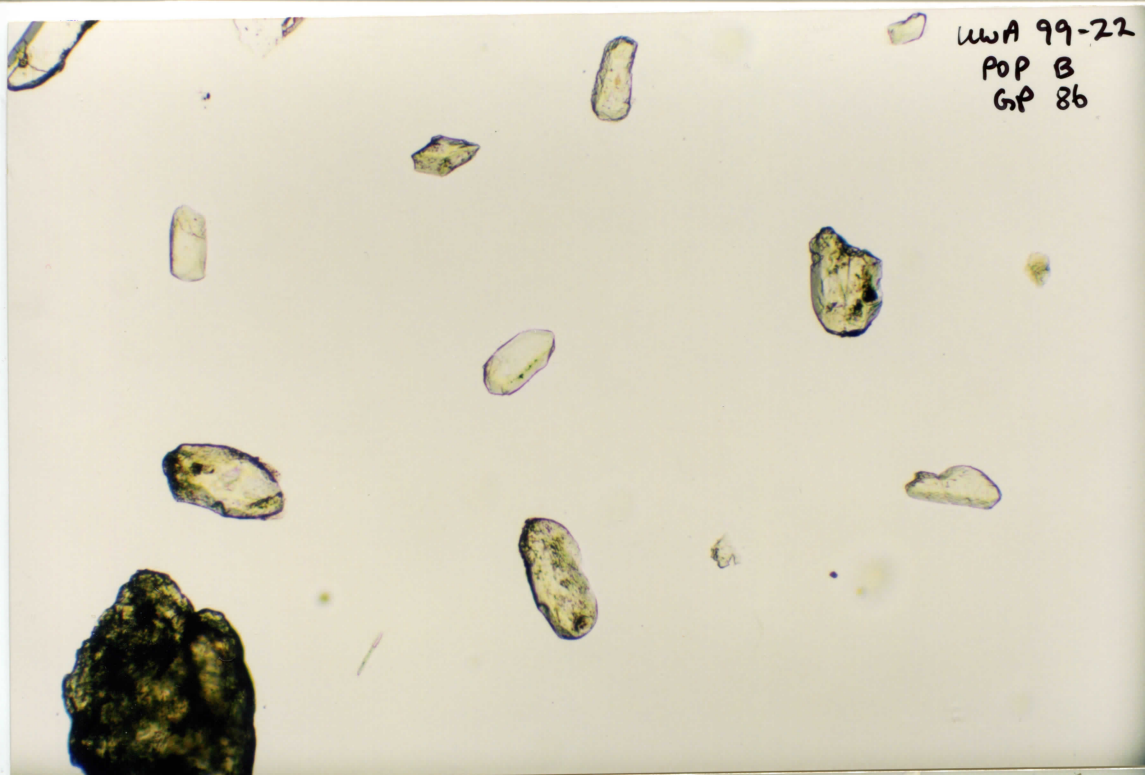
UWA 99-22  
POP B  
GP 84



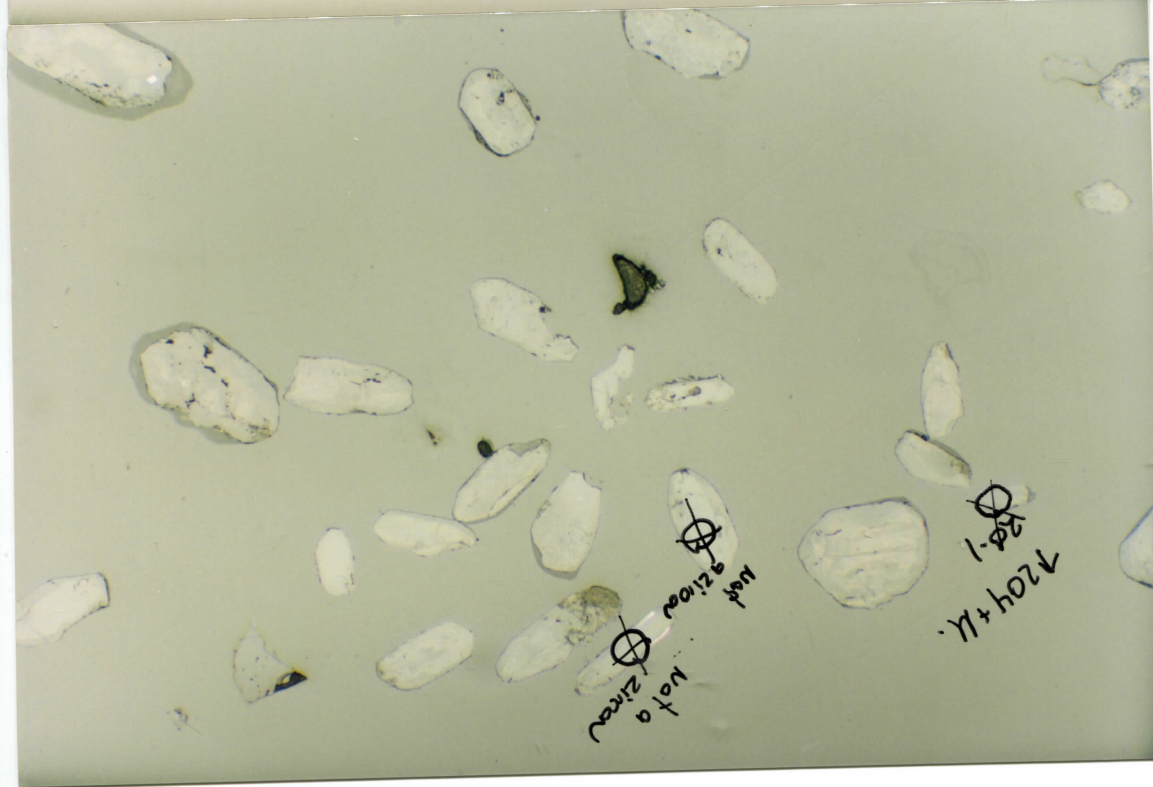
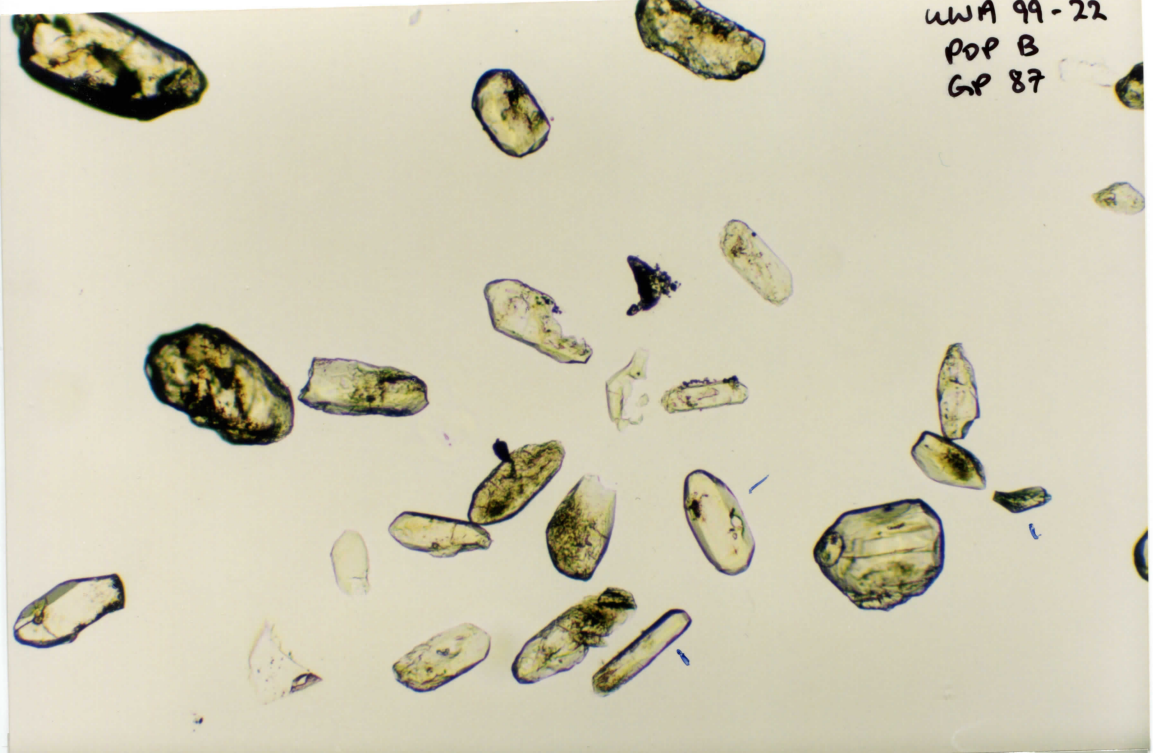
UWA 99-22  
POP B  
GP 85



WA 99-22  
POP B  
GP 86



UWA 99-22  
POP B  
GP 87

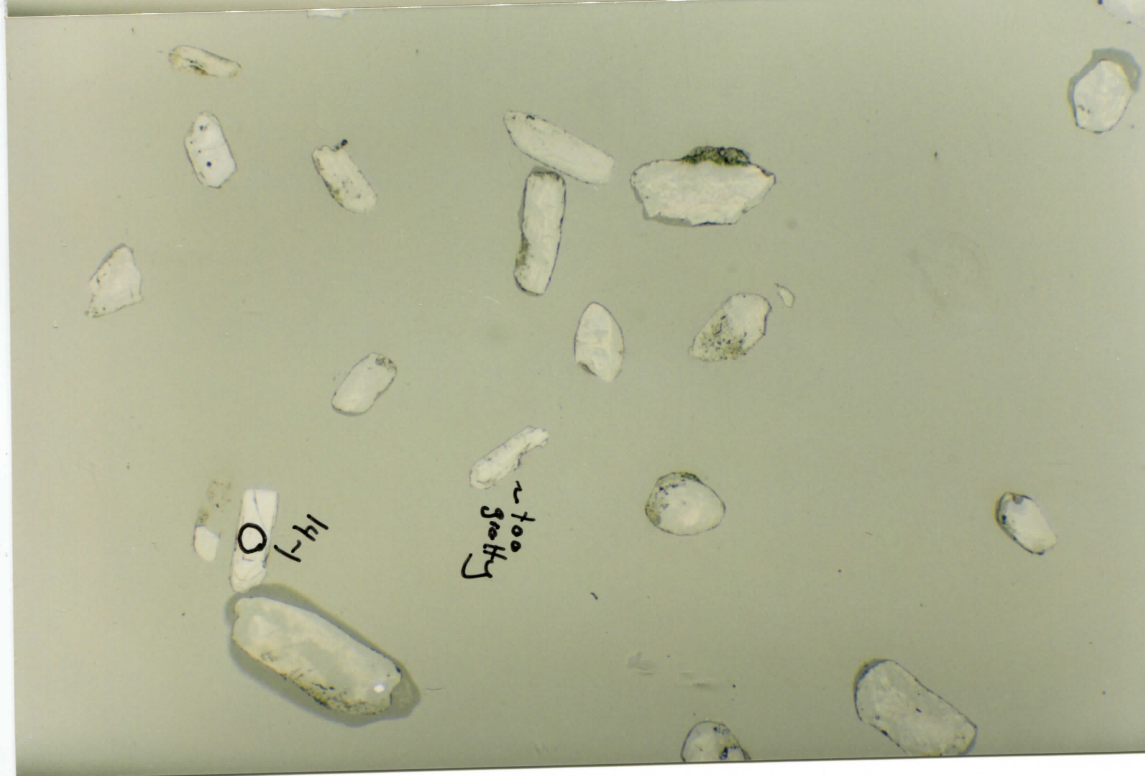
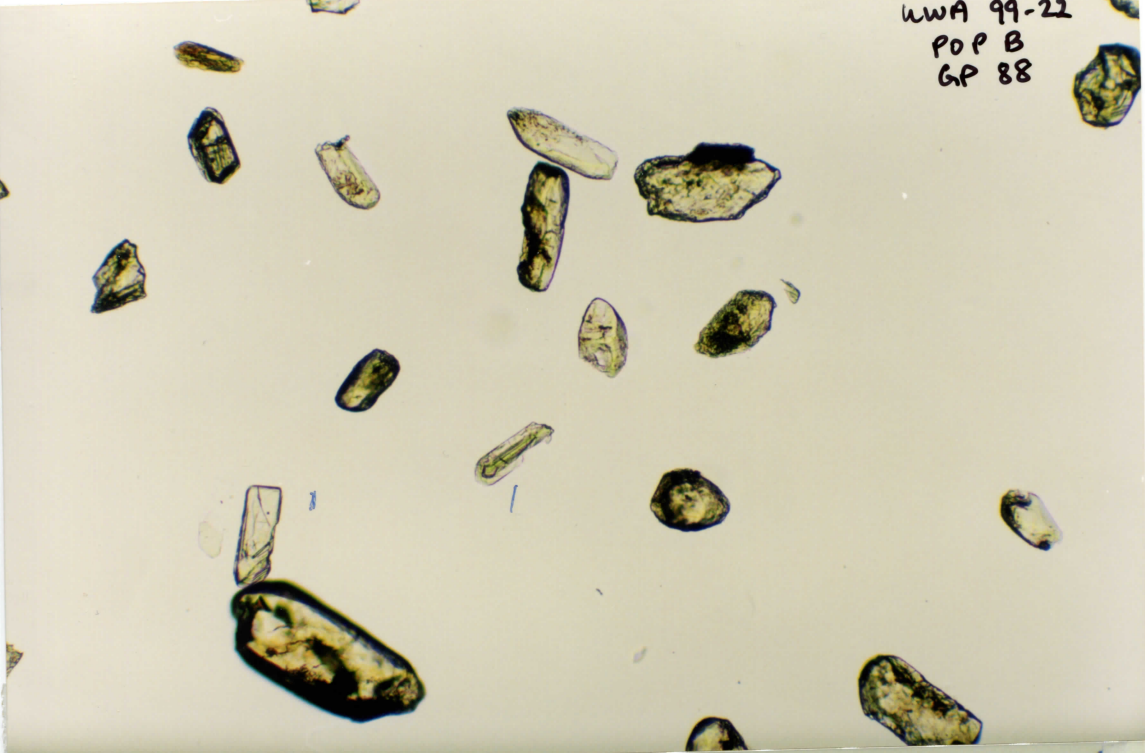


Lot 9  
Zircon

1-28-1  
7204+11



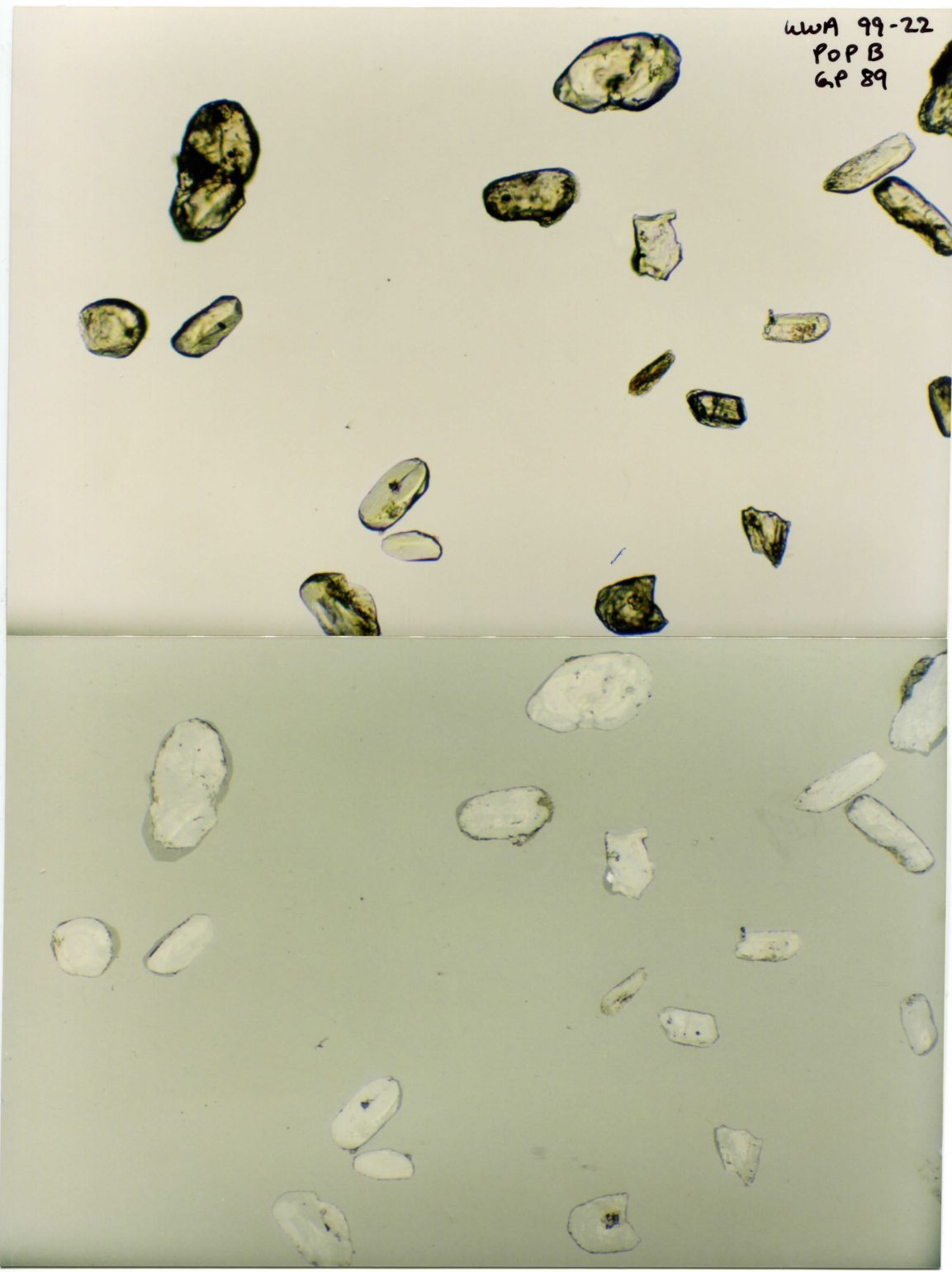
LWA 99-22  
POP B  
GP 88



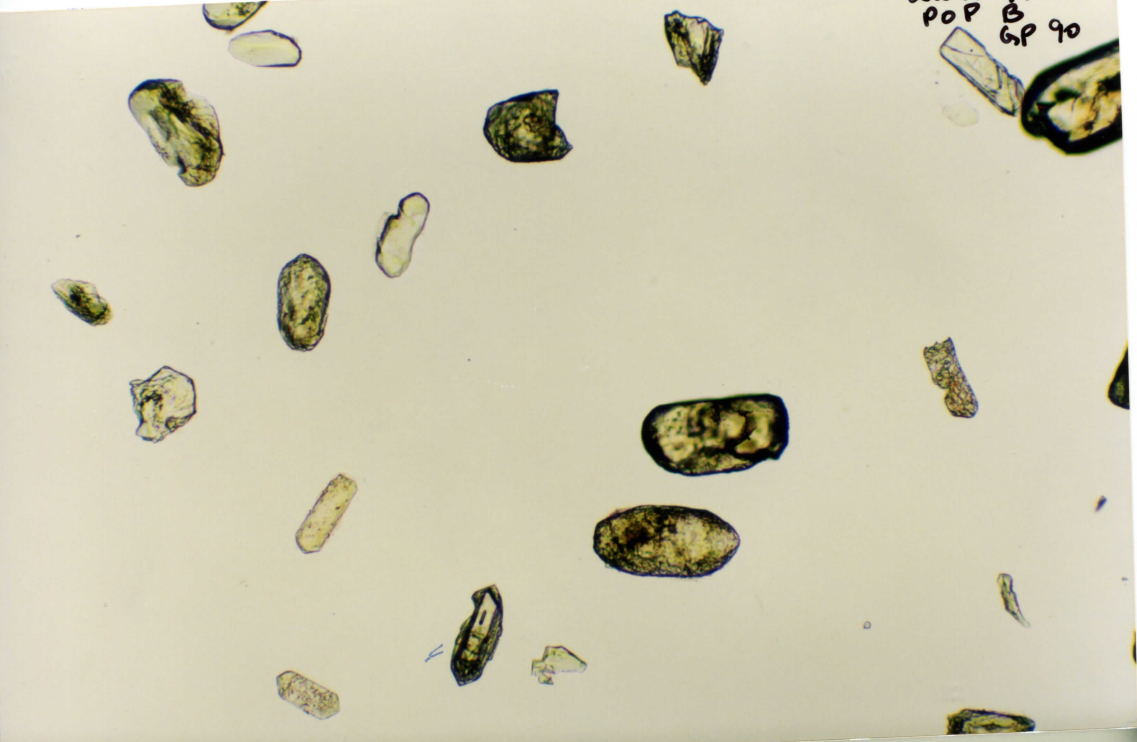
0  
1-1

~ 100  
see this

wwA 99-22  
POP B  
6.P 89

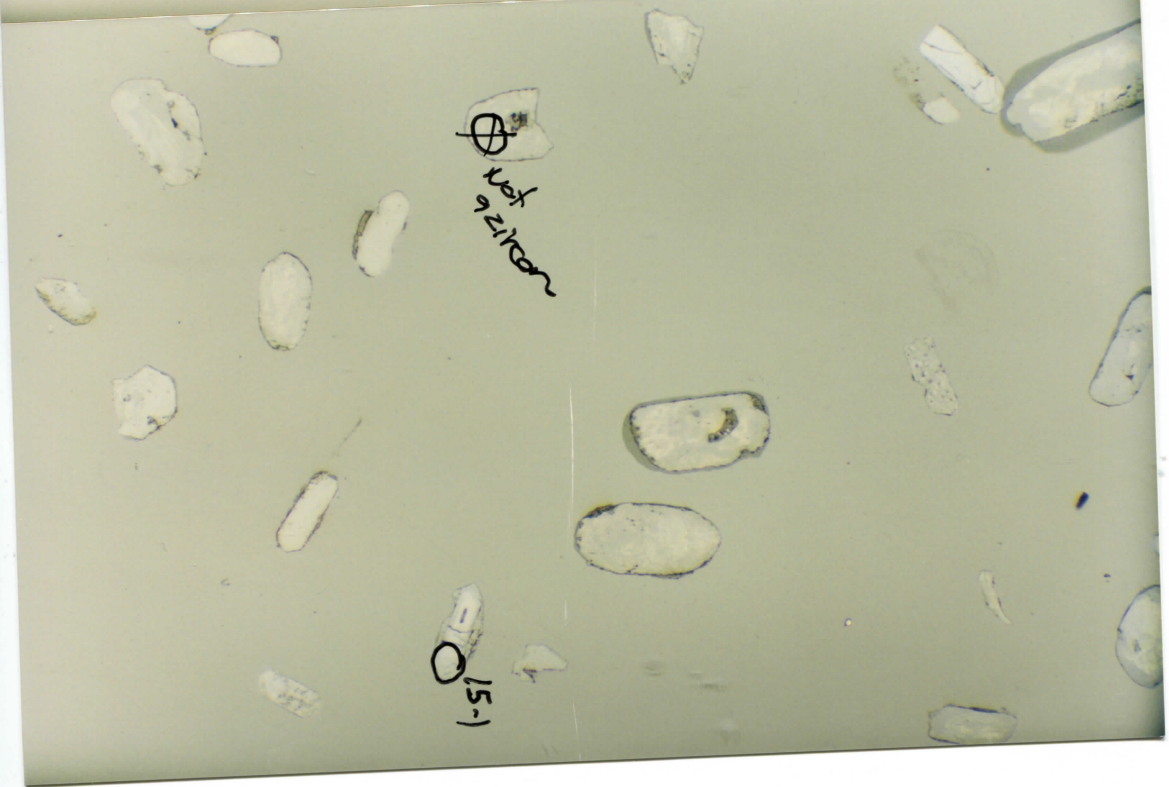


UWA 99-22  
POP B  
SP 90

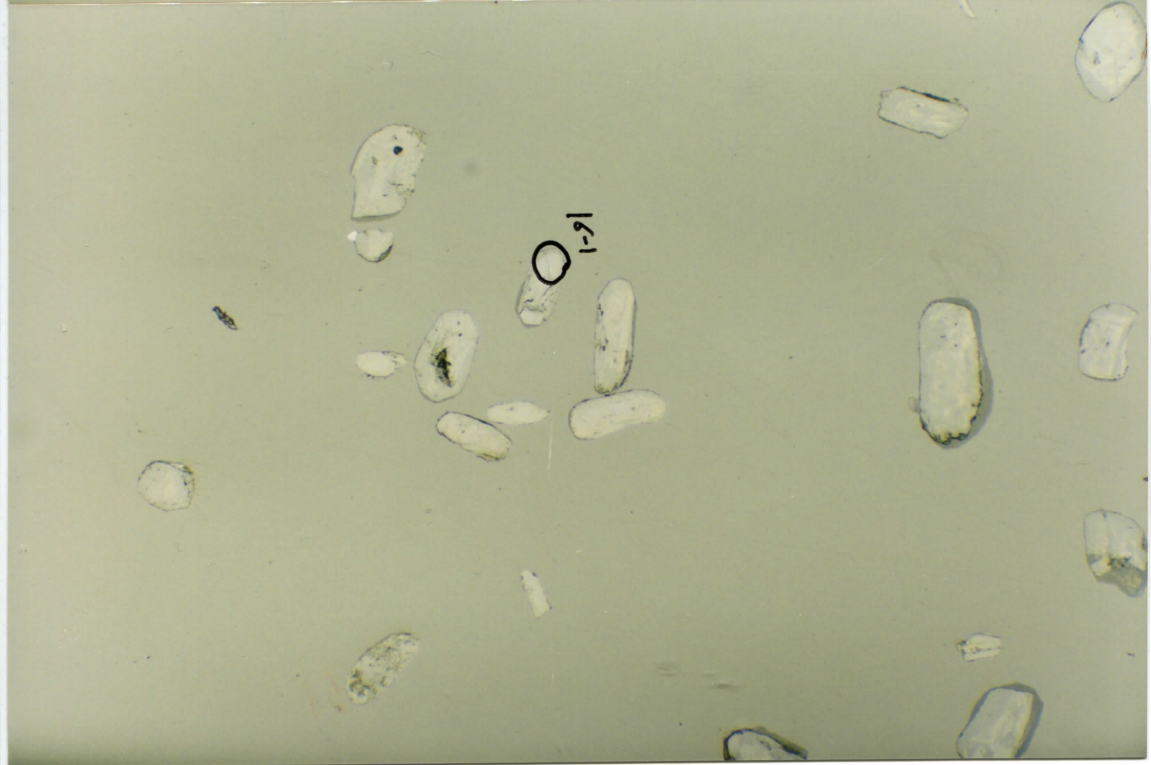
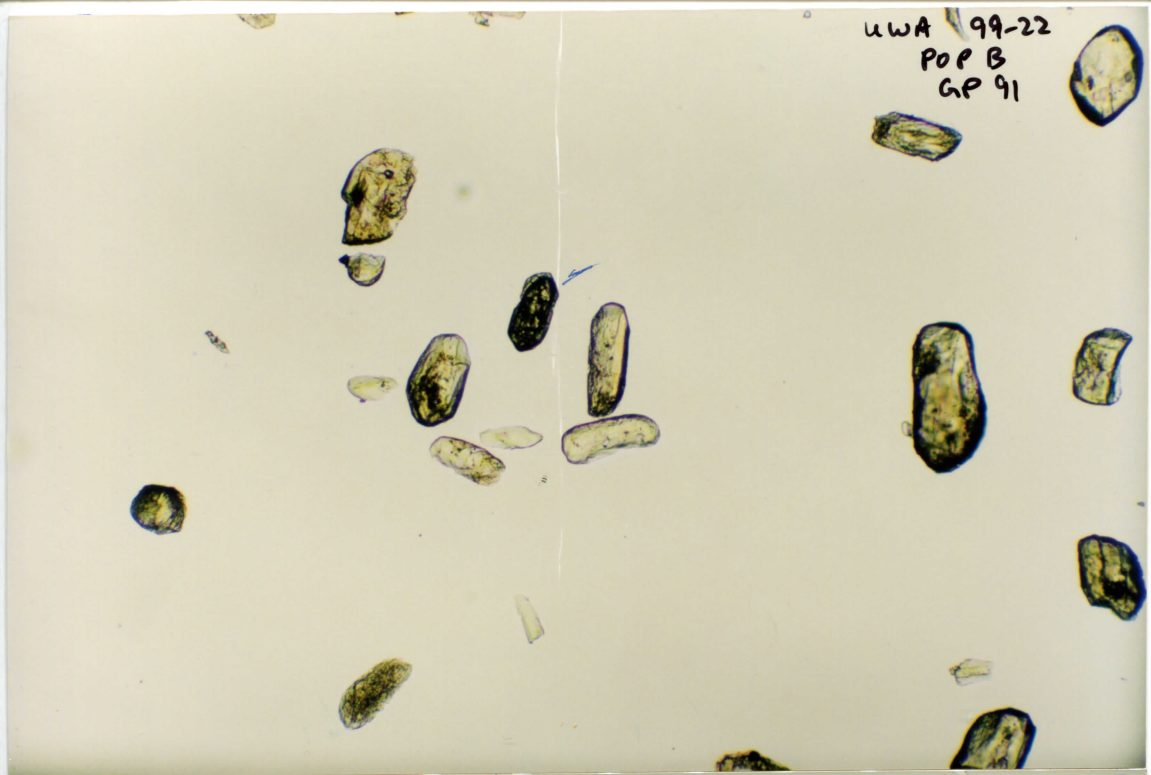


⊕  
not  
9.2.1000

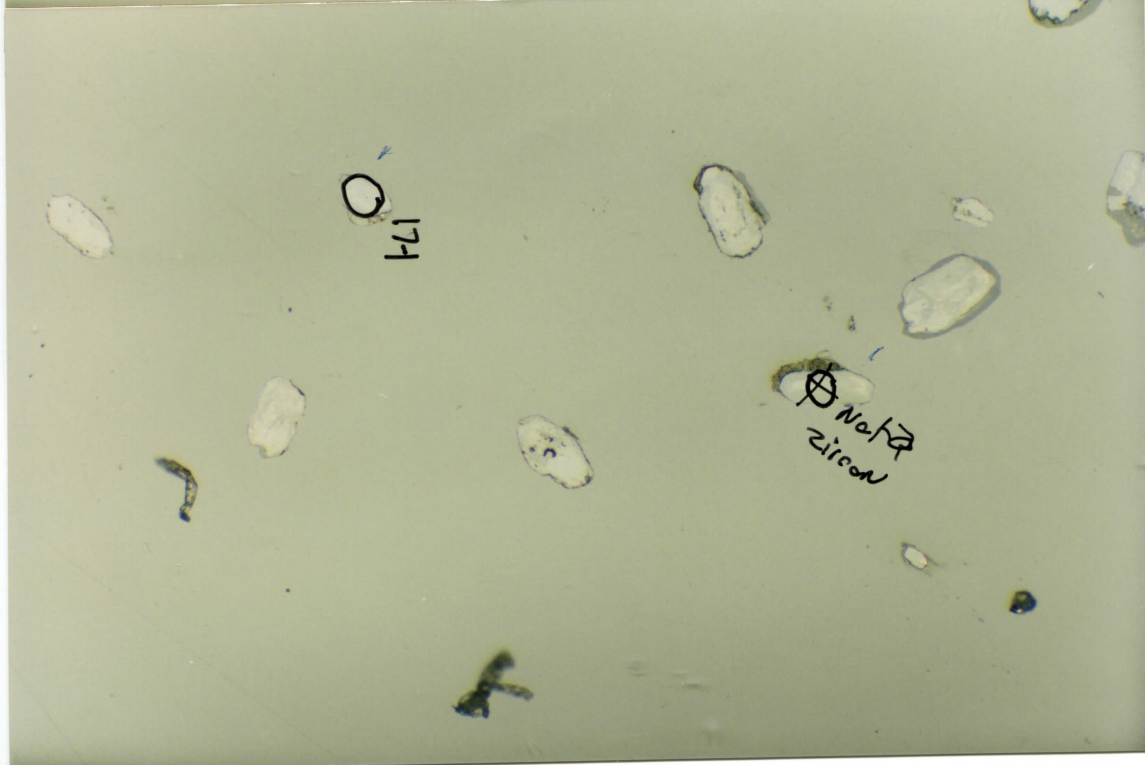
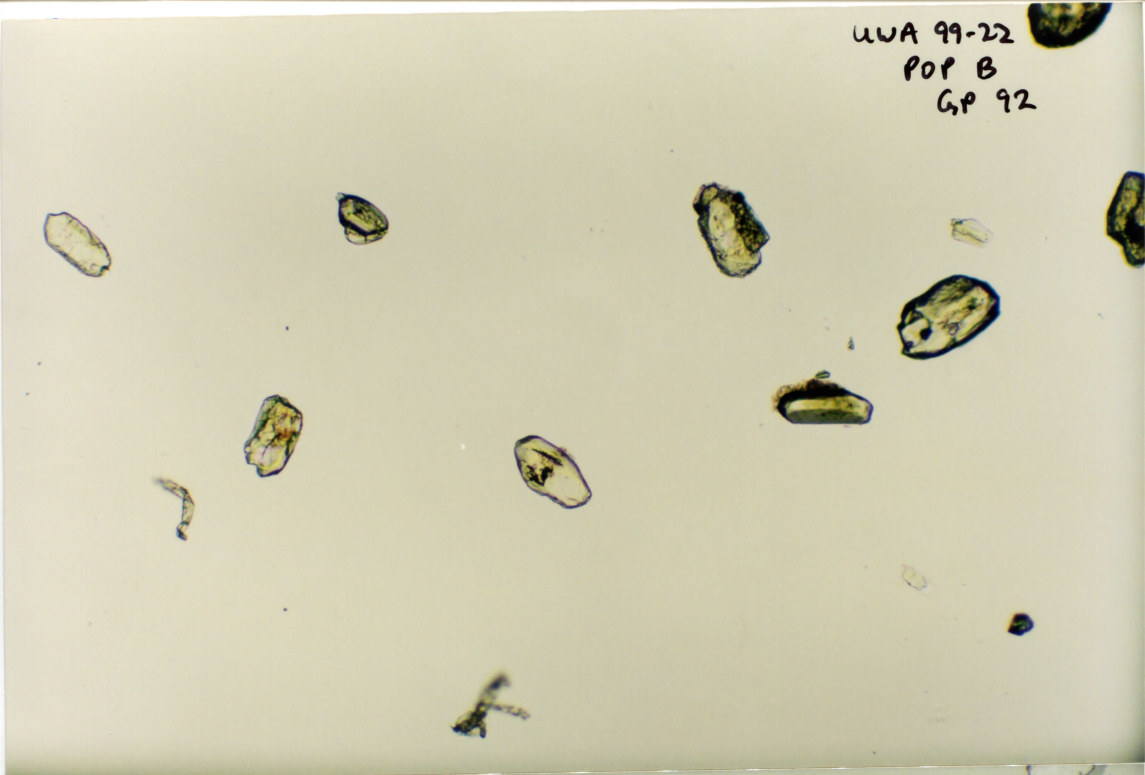
15-1



UWA 99-22  
POP B  
GP 91



UWA 99-22  
POP B  
GP 92



UWA 99-22  
POP B  
GP 93

