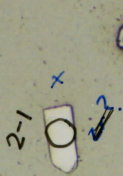
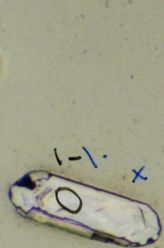


99-43A

9



Not Zircon



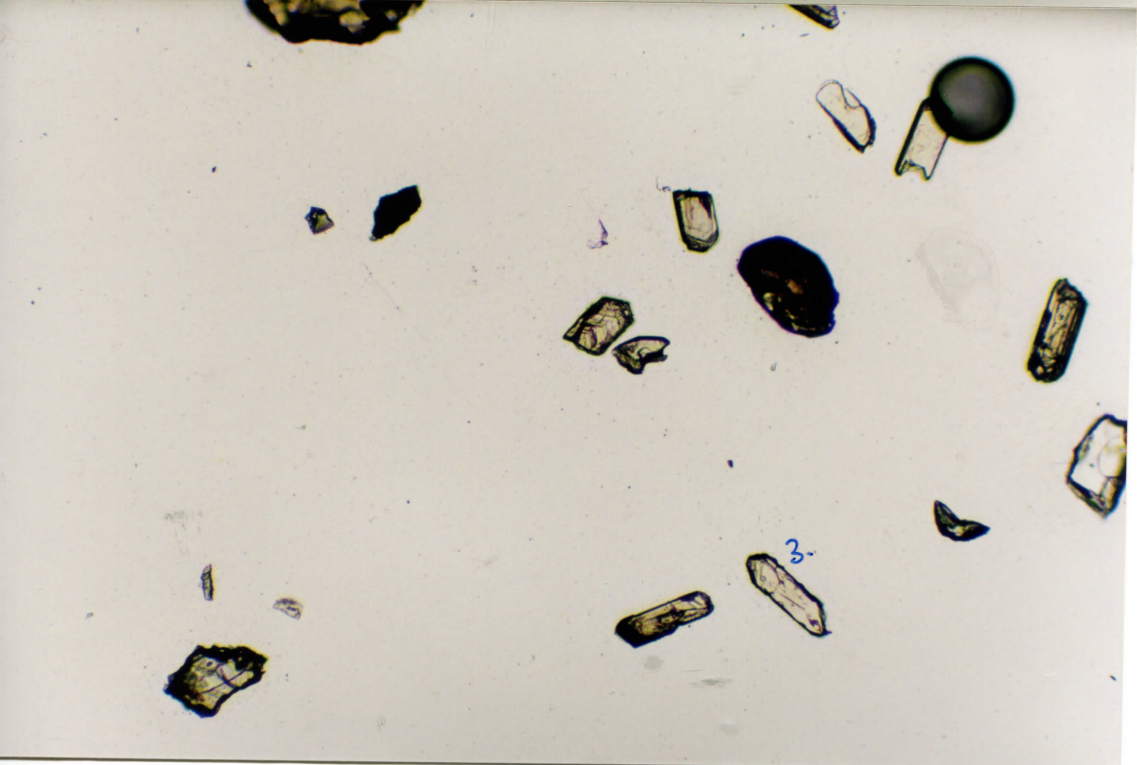
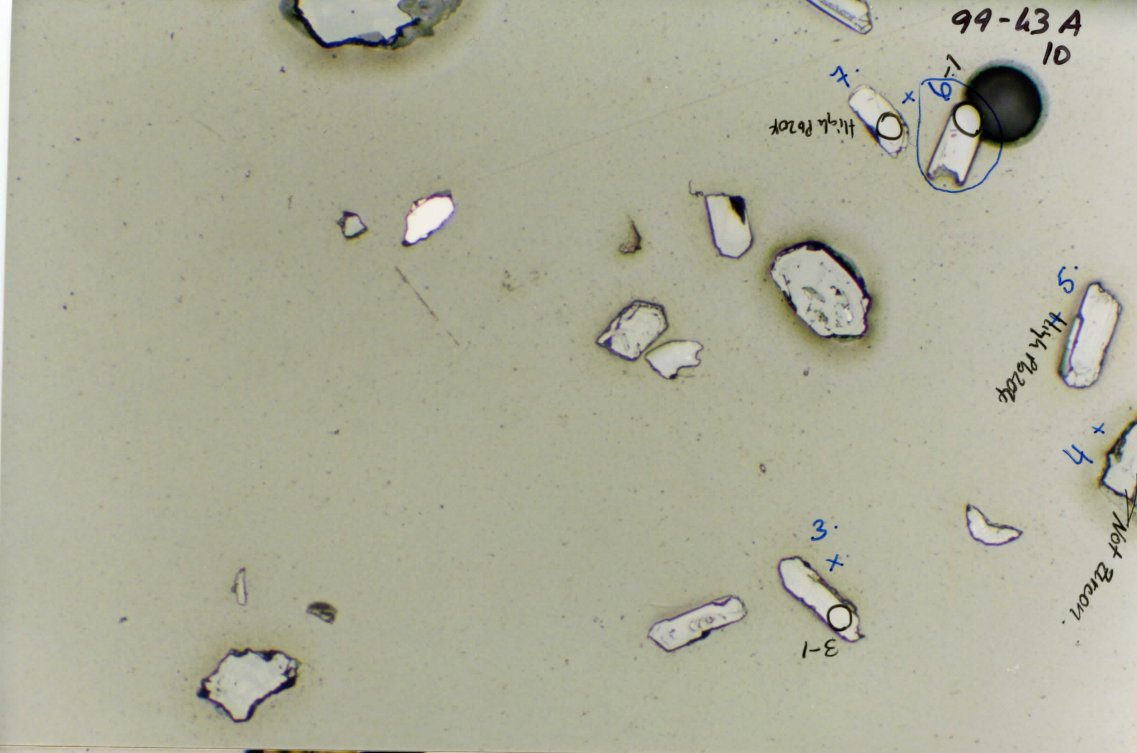
99-43 A
10

7.
+
6.
+
High Power

5.
High Power

4.
+
Not Brown

3.
+
3-1



99-63A
11

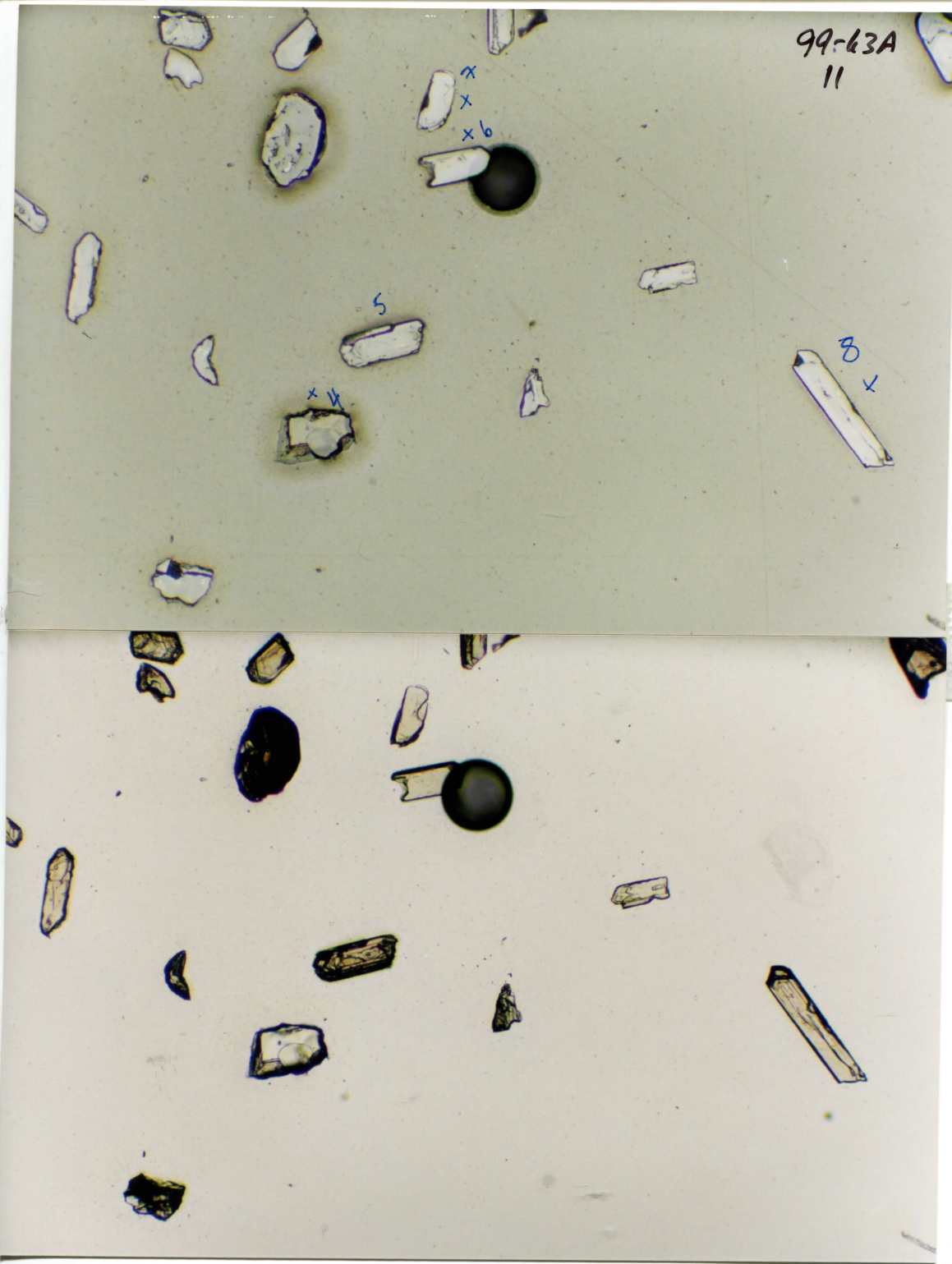
x
x
x6

5

x
x

8

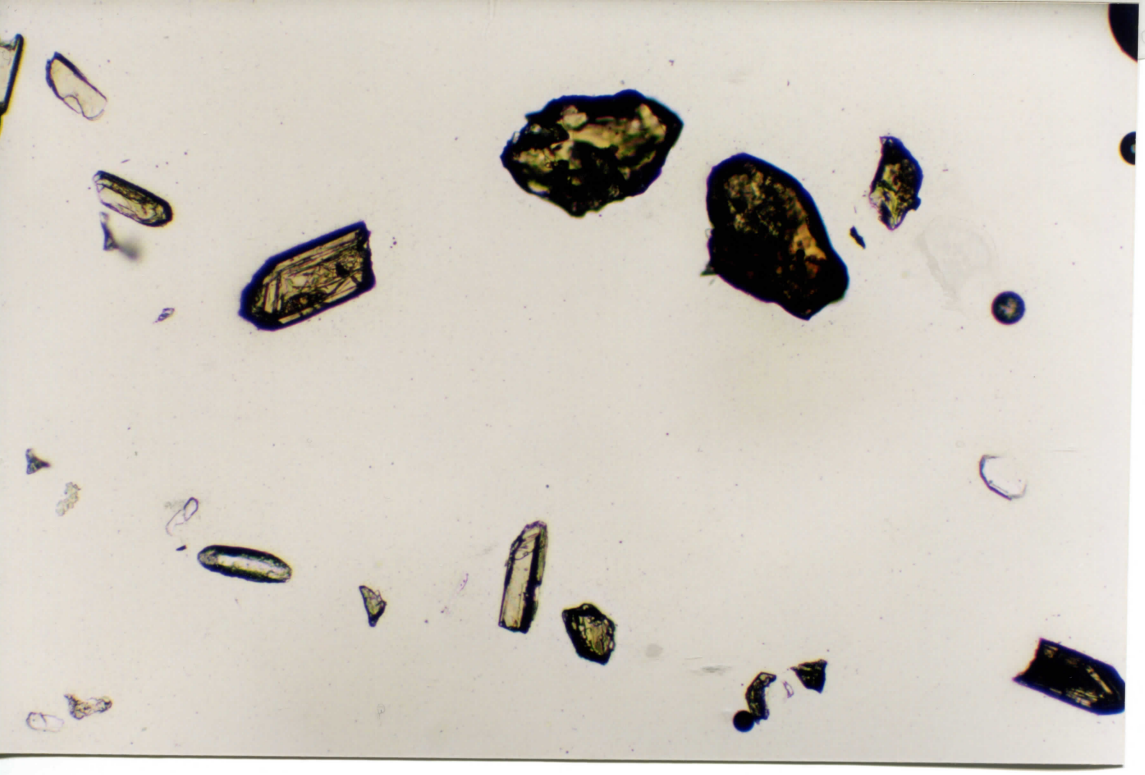
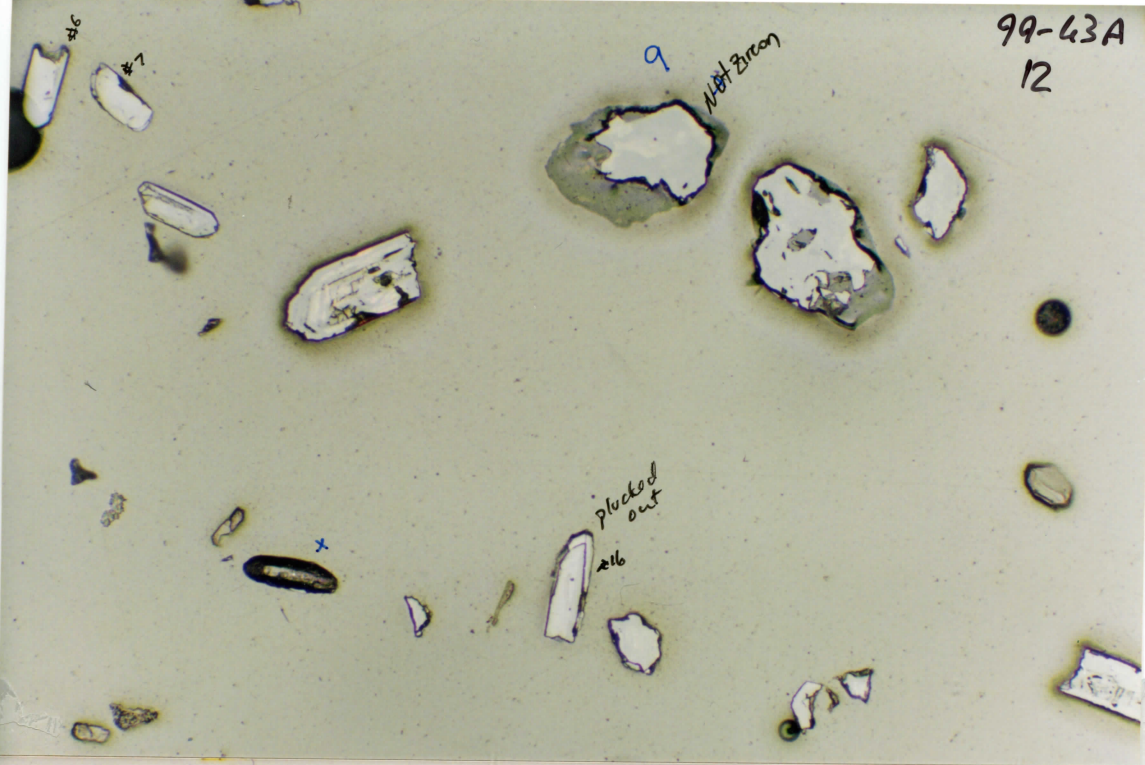
x



99-63A
12

9
Not Zircon

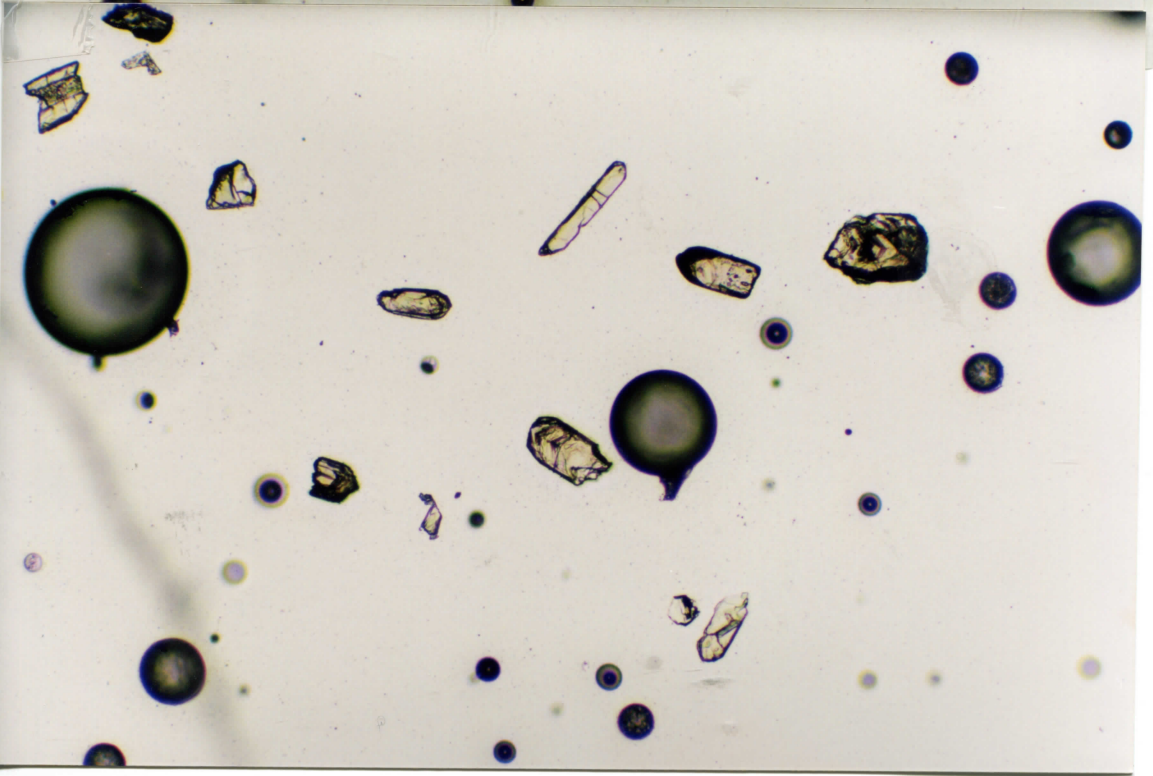
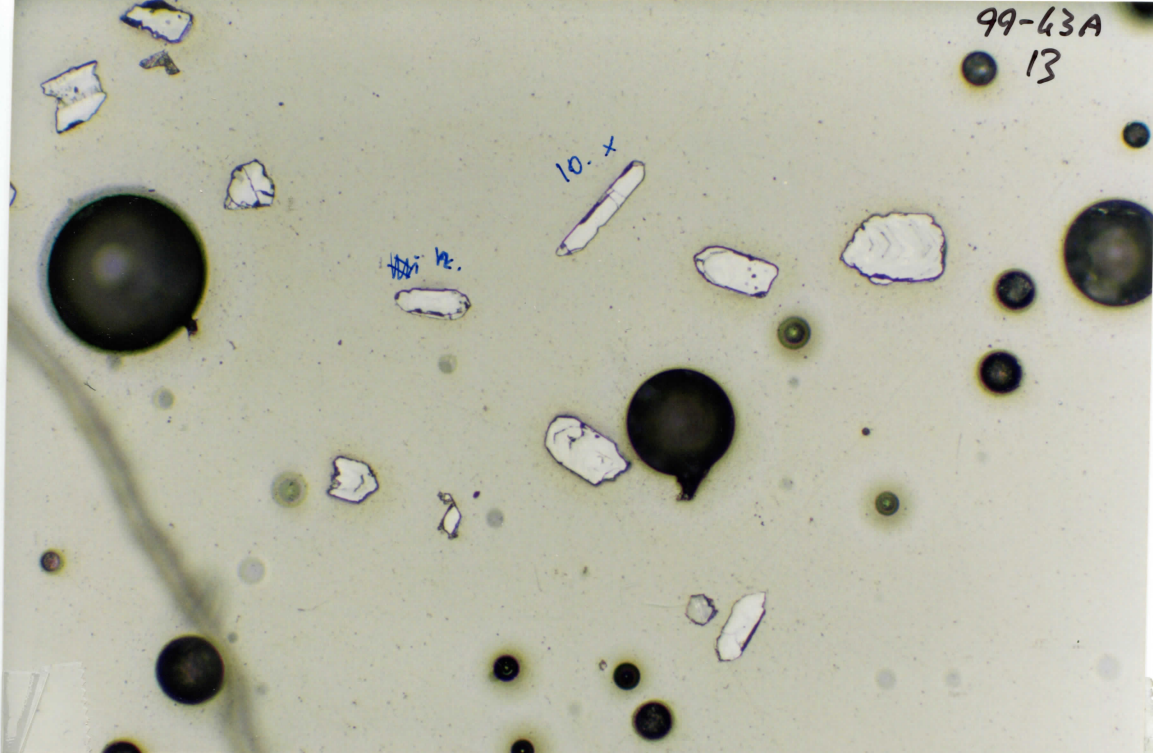
Plucked out
216



99-63A
13

10. x

2.

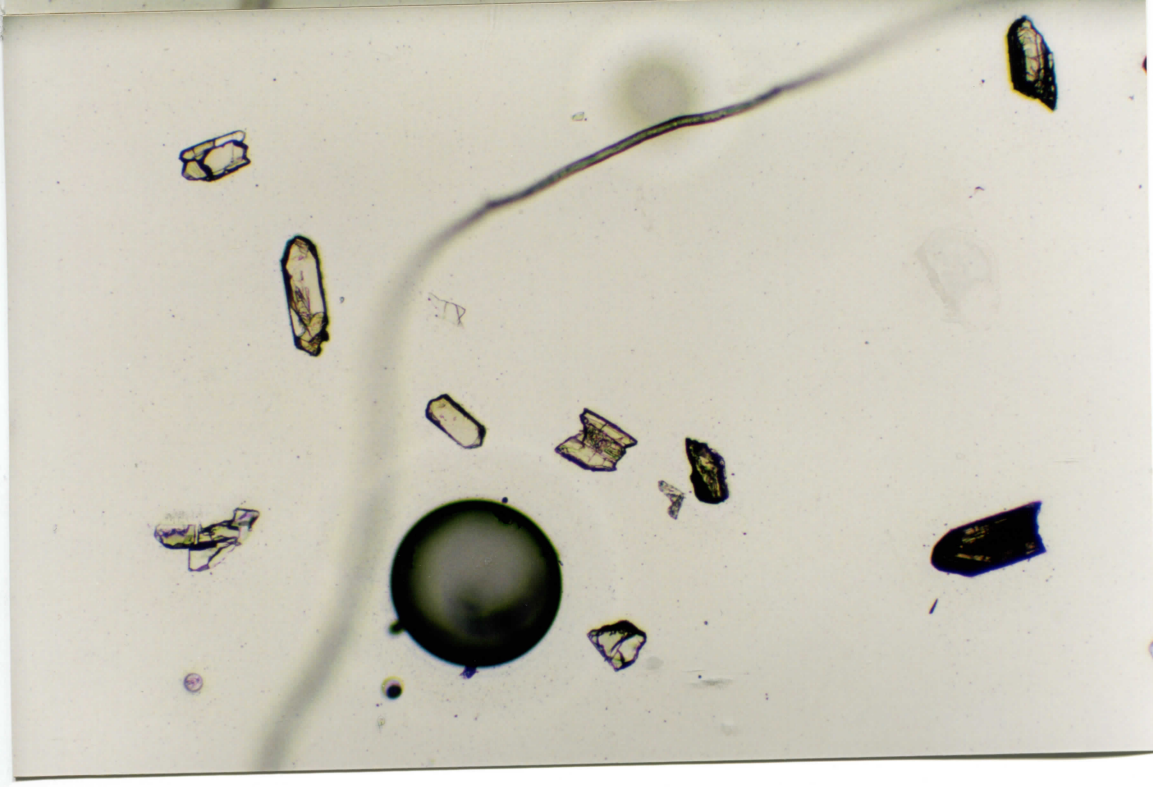
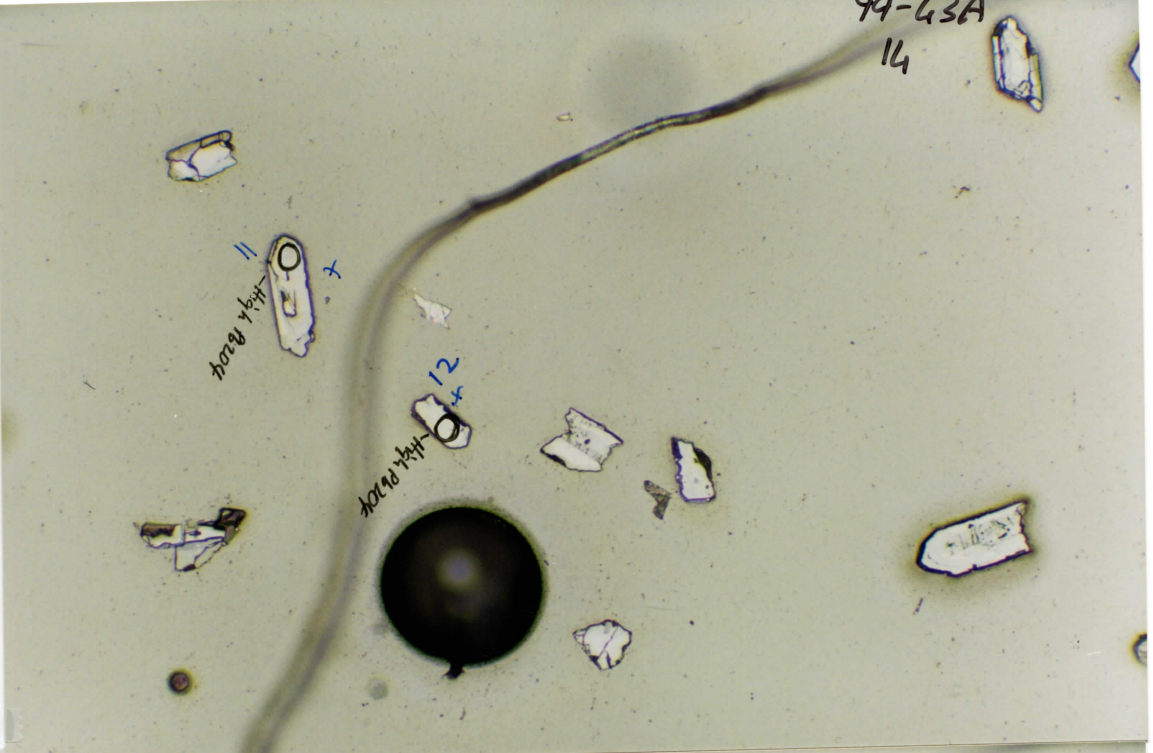


99-43A

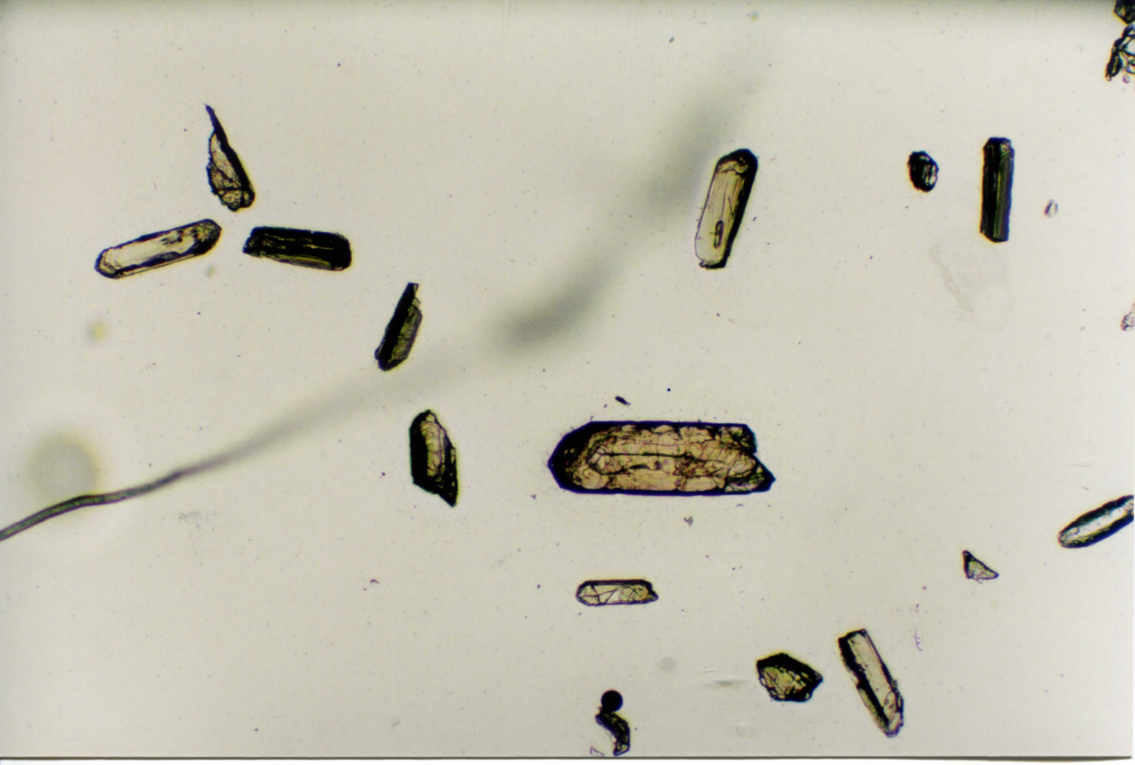
14

11
High Power

12
High Power



99-43A
15

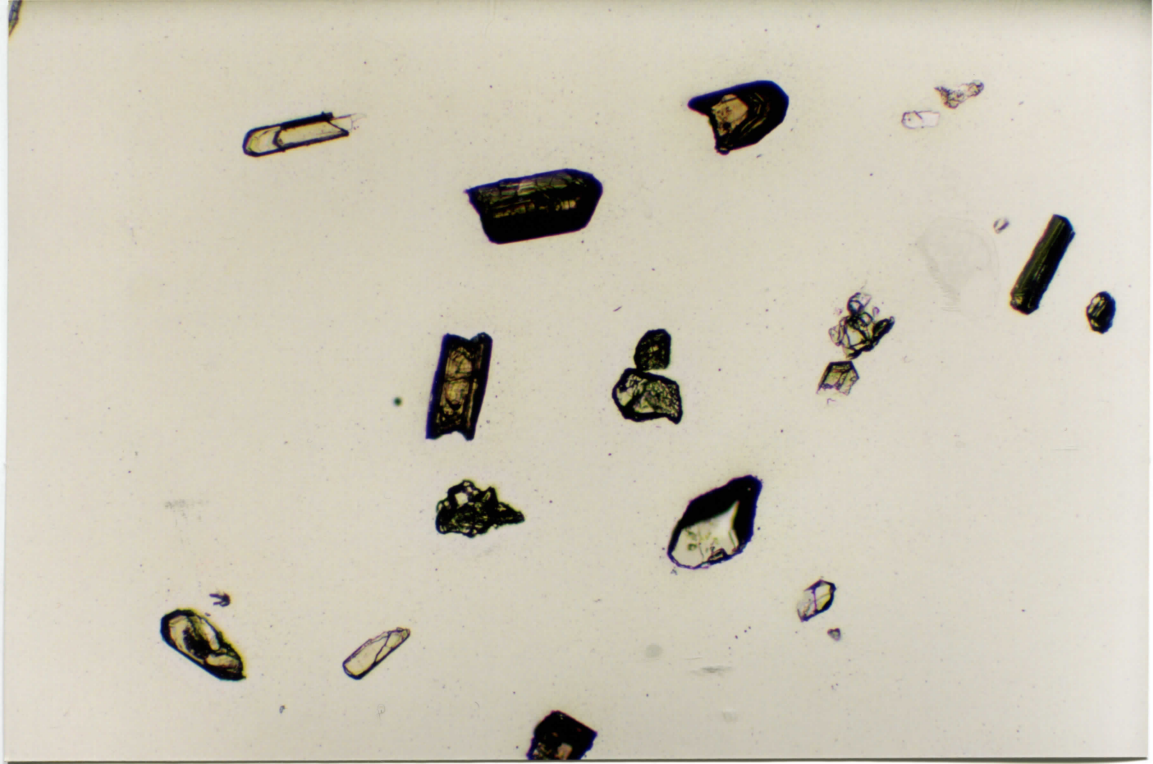
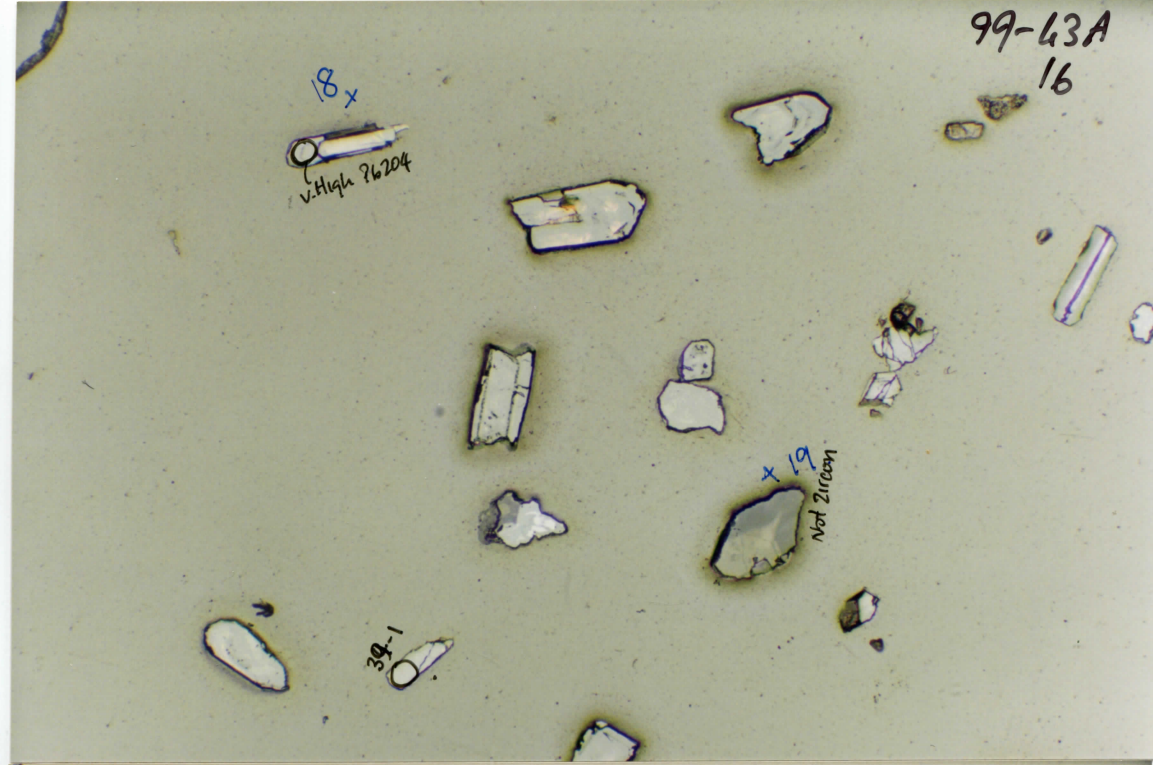


99-43A
16

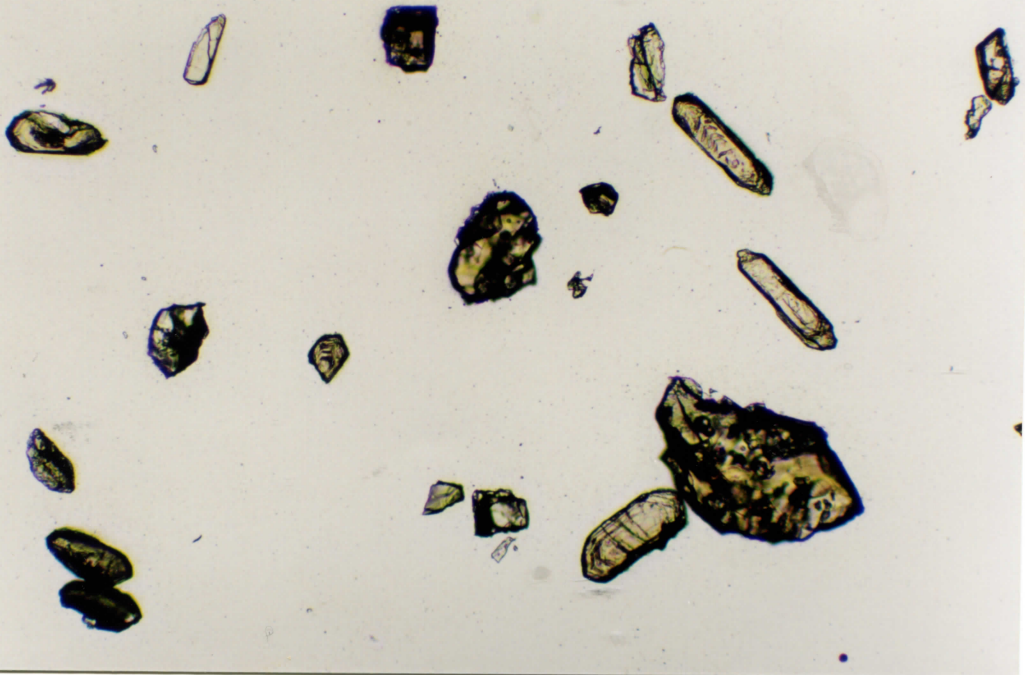
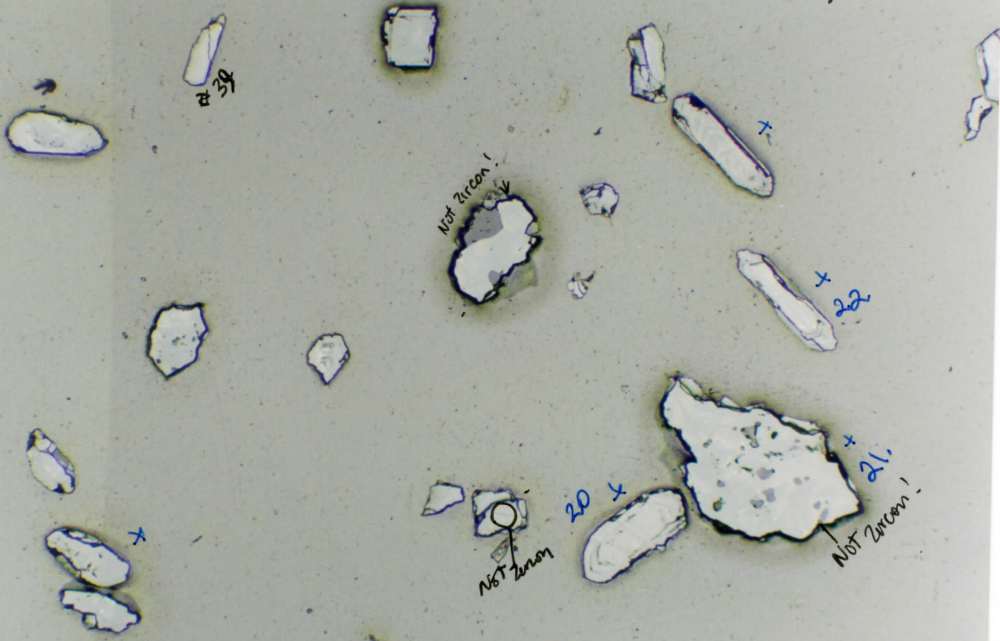
18x
v.High 76204

x 19
Not Zircon

39-1



99-43A
17



99-63A
18(A)

x 23

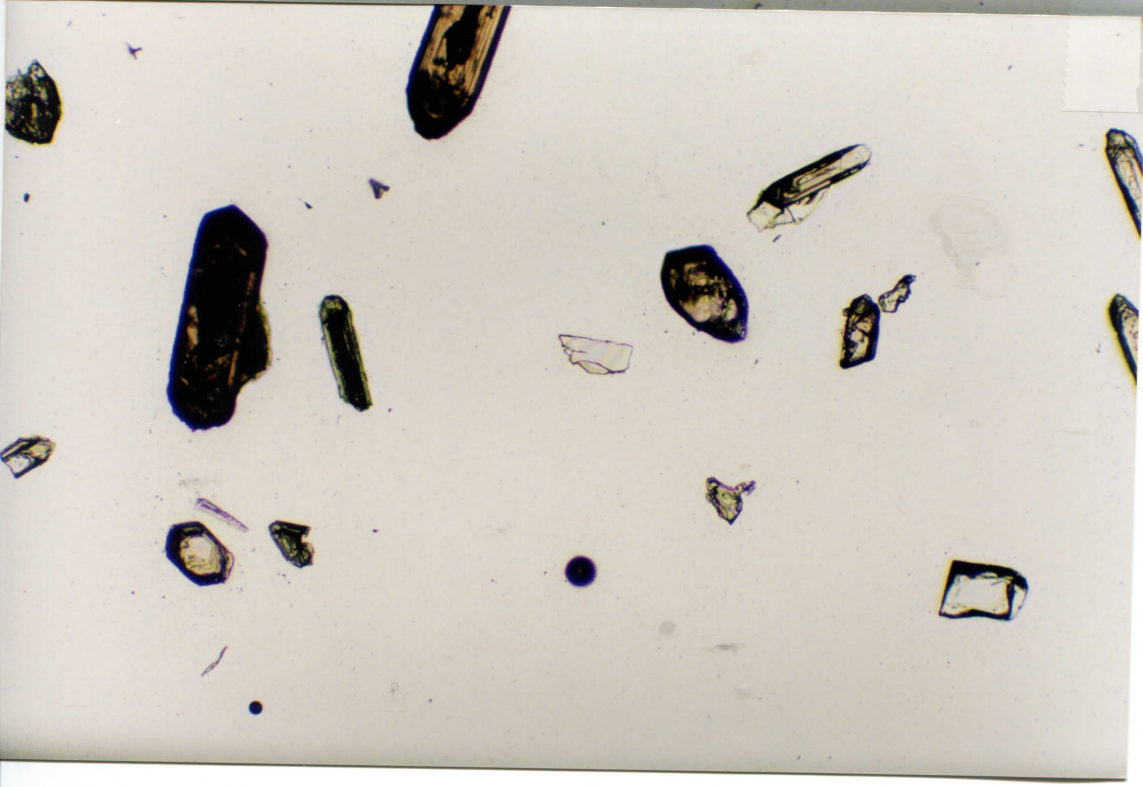
x 24

25

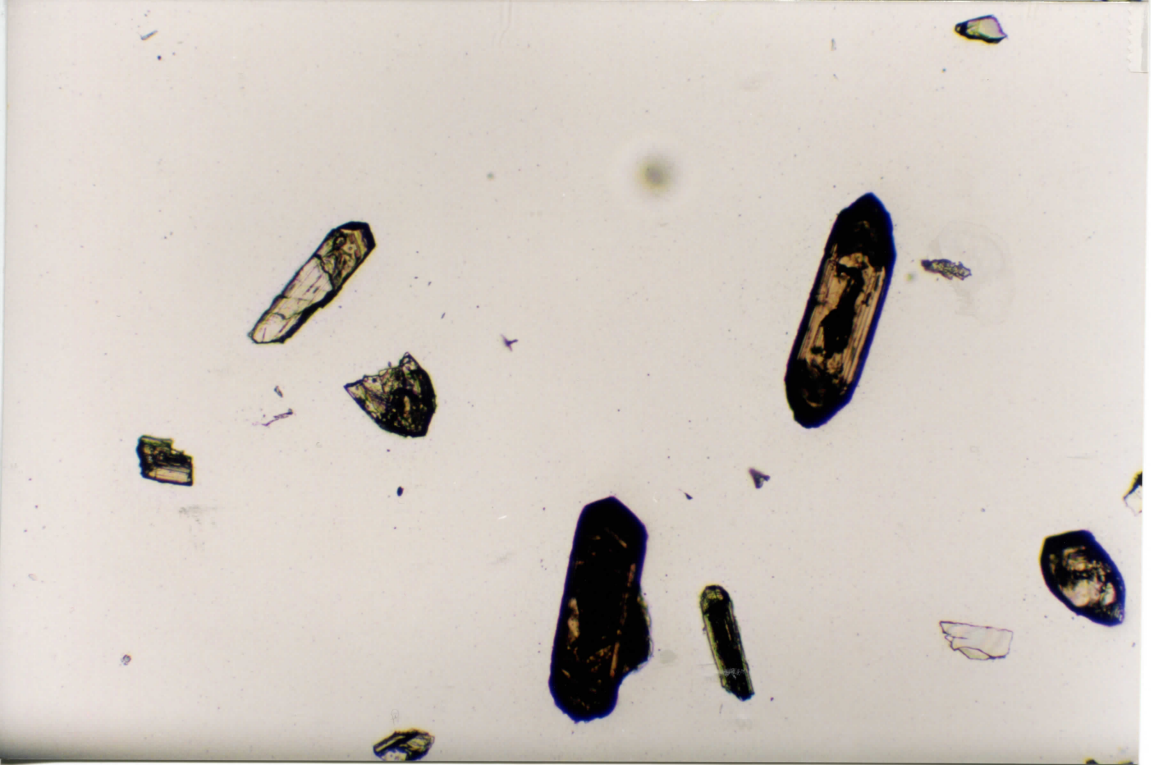
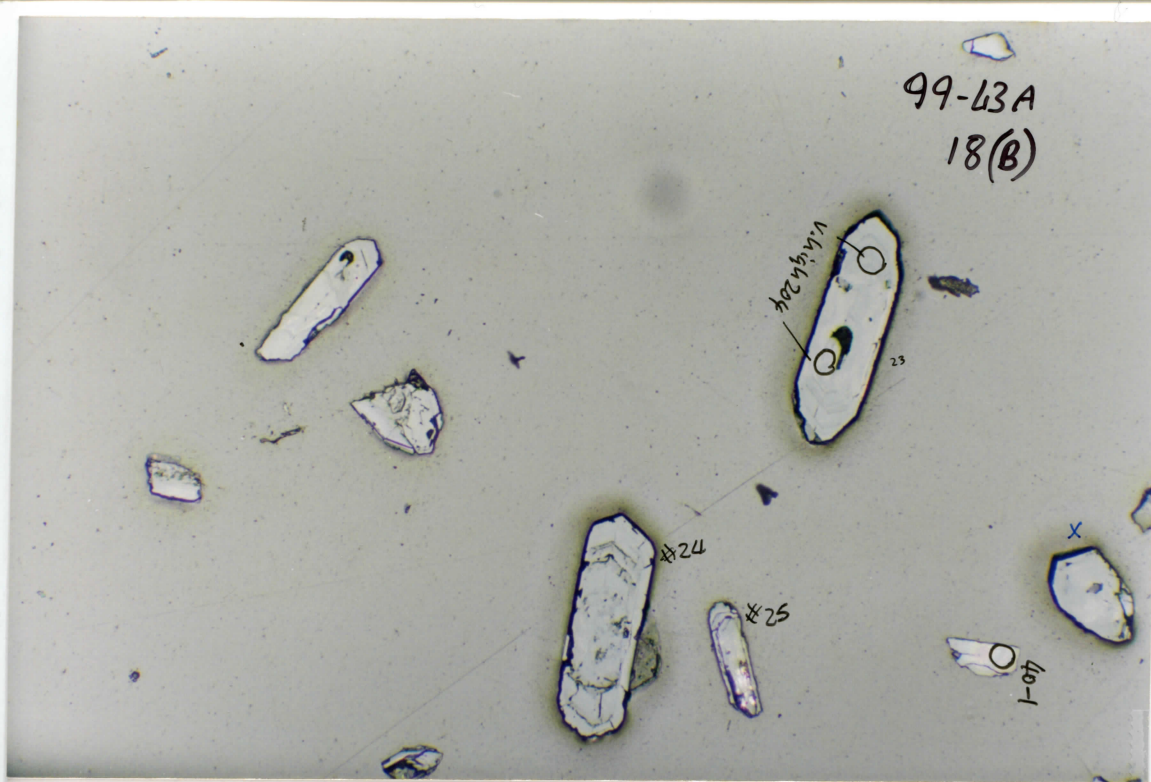
24

26

picked out

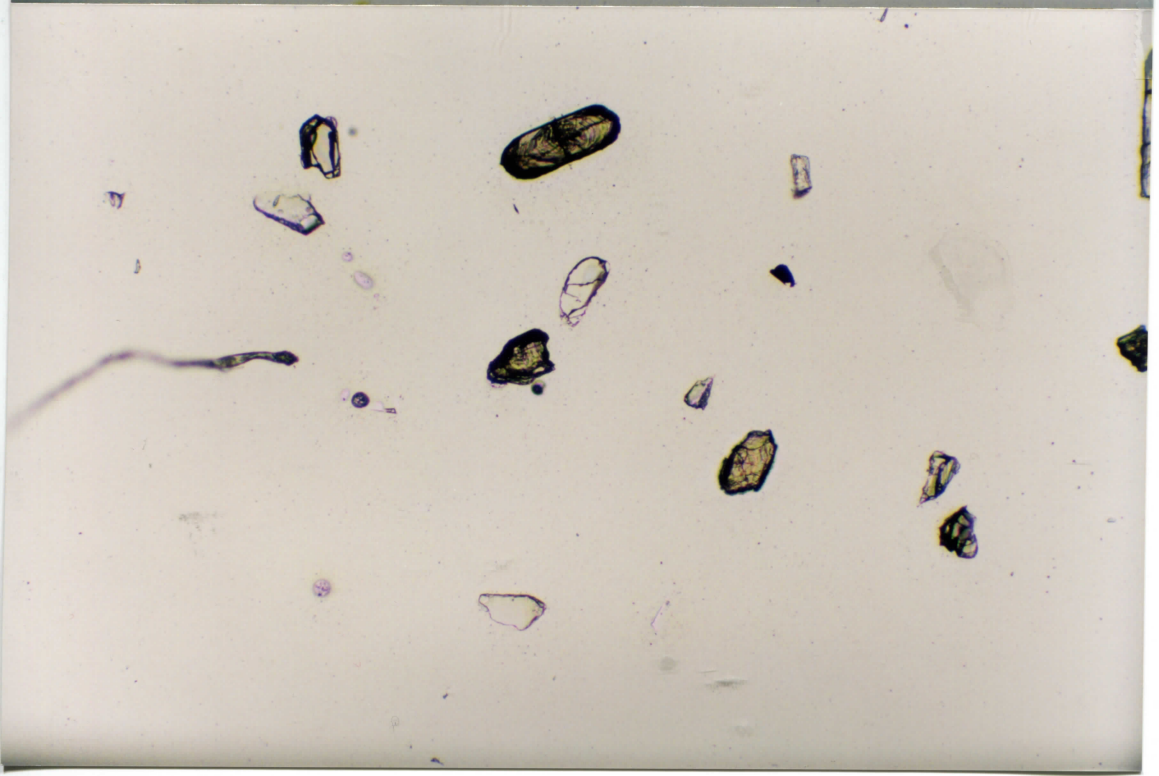
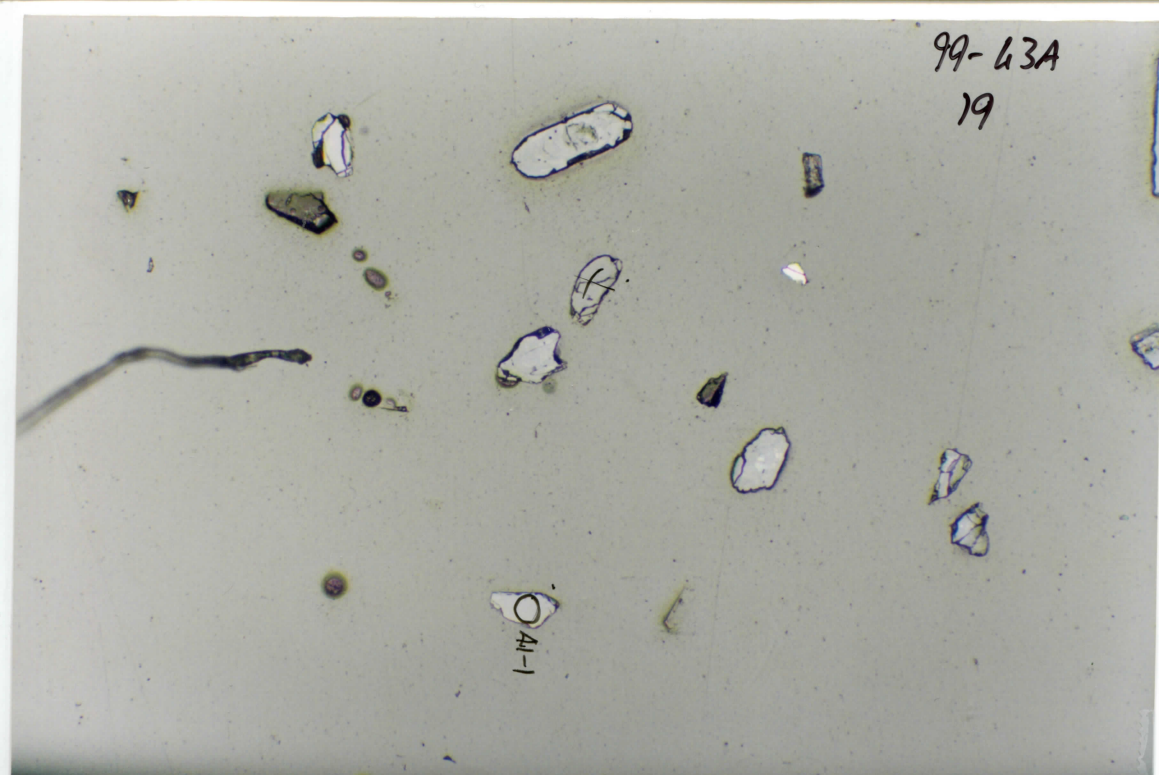


99-43A
18(B)



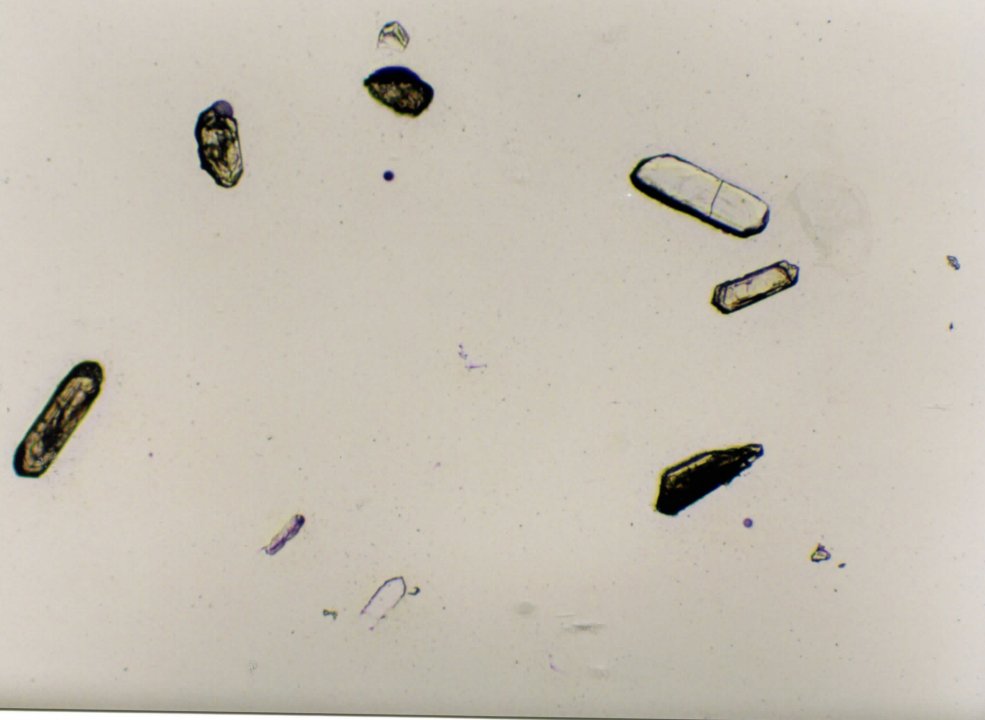
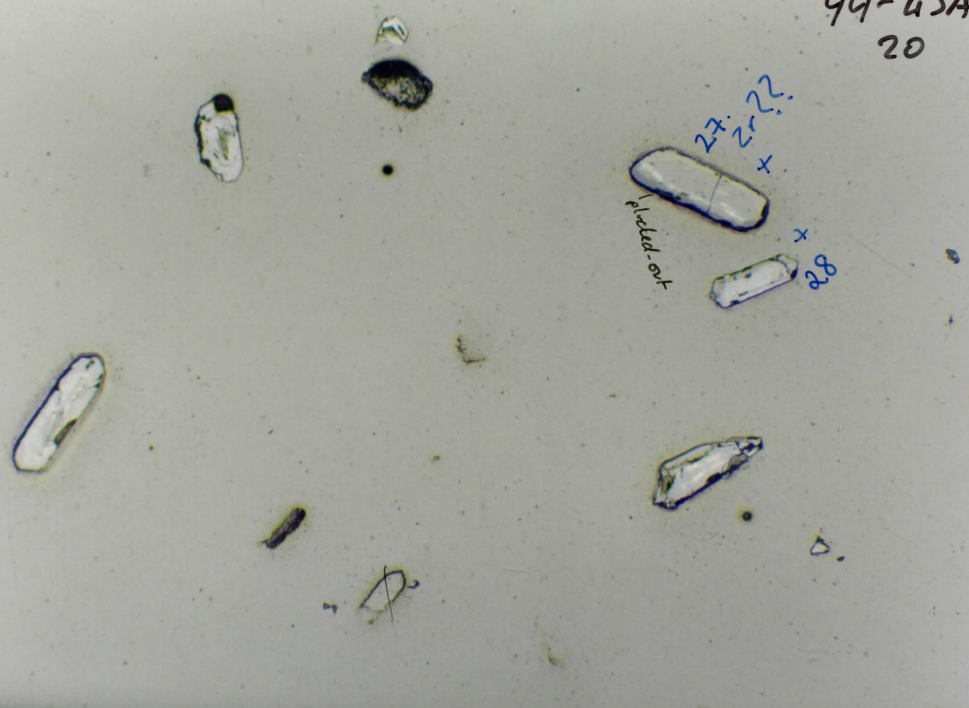
99-63A
19

041-1



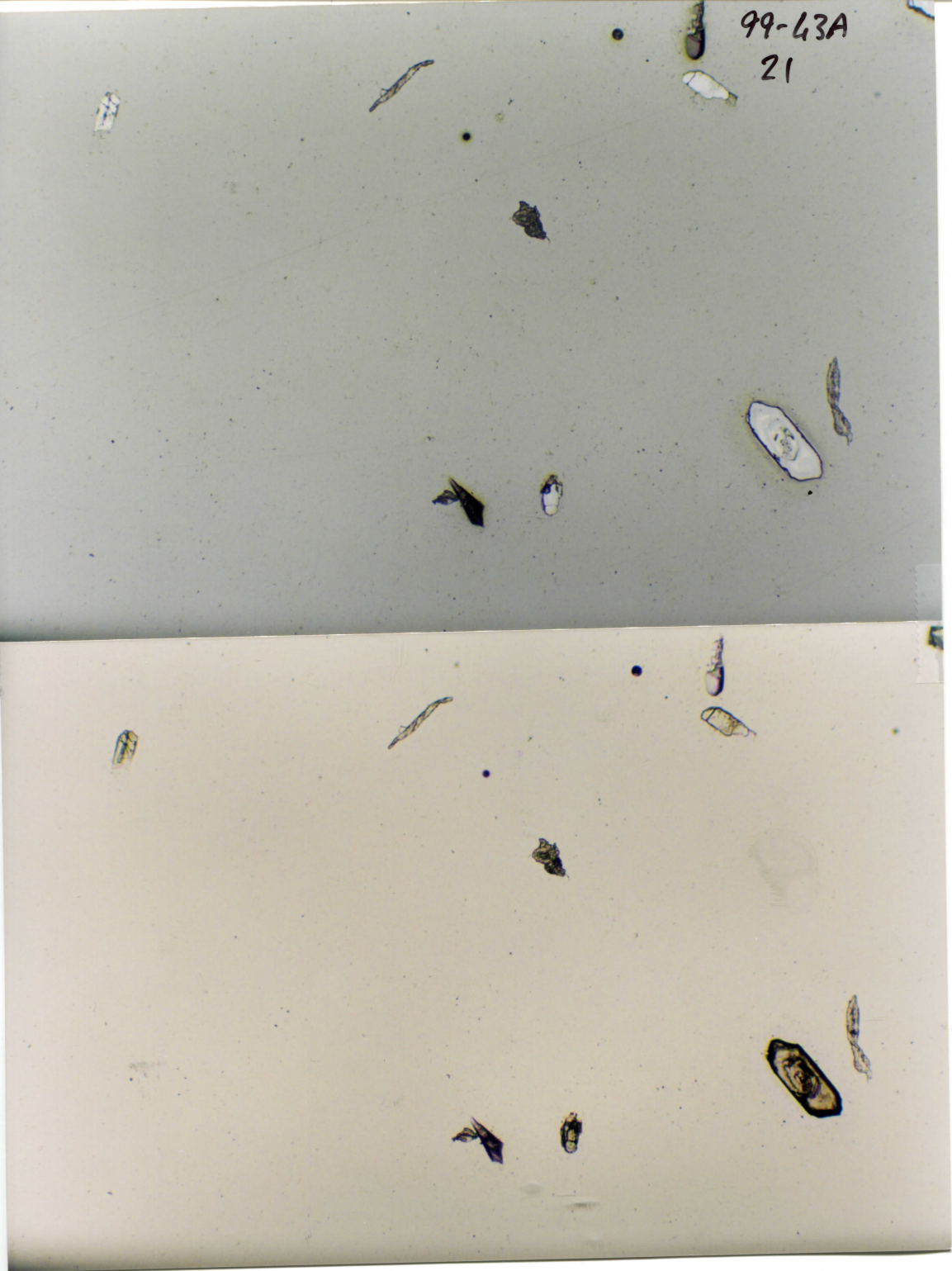
99-43A
20

27
27
+
picked-out
+
28



99-43A

21



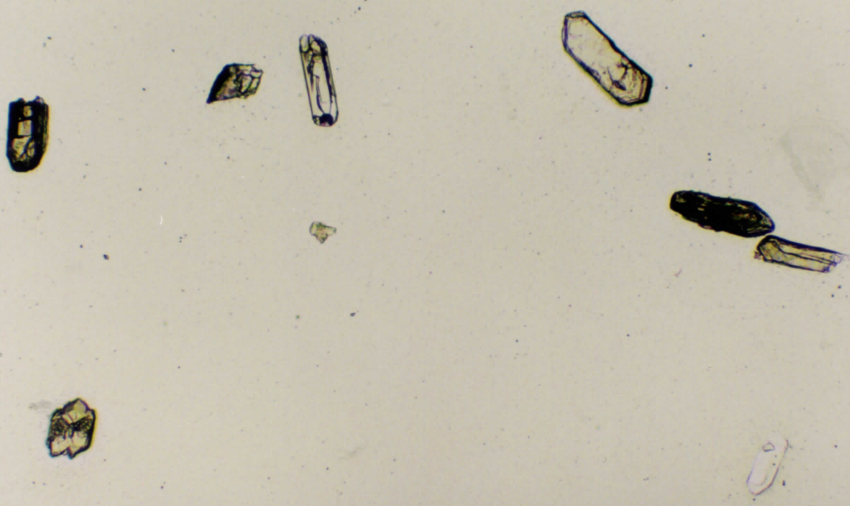
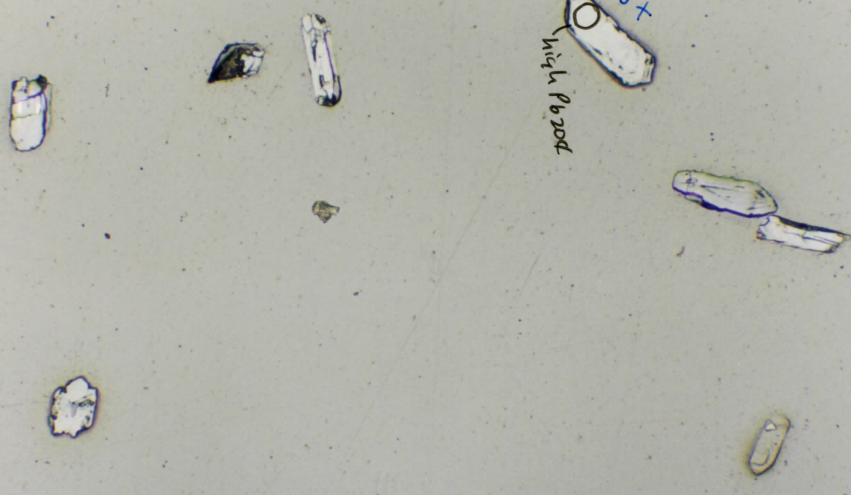
99-43A
22



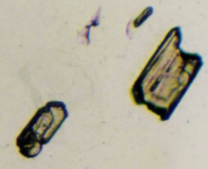
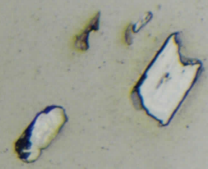
99-43A

23

30+
High Power



99-43A
24

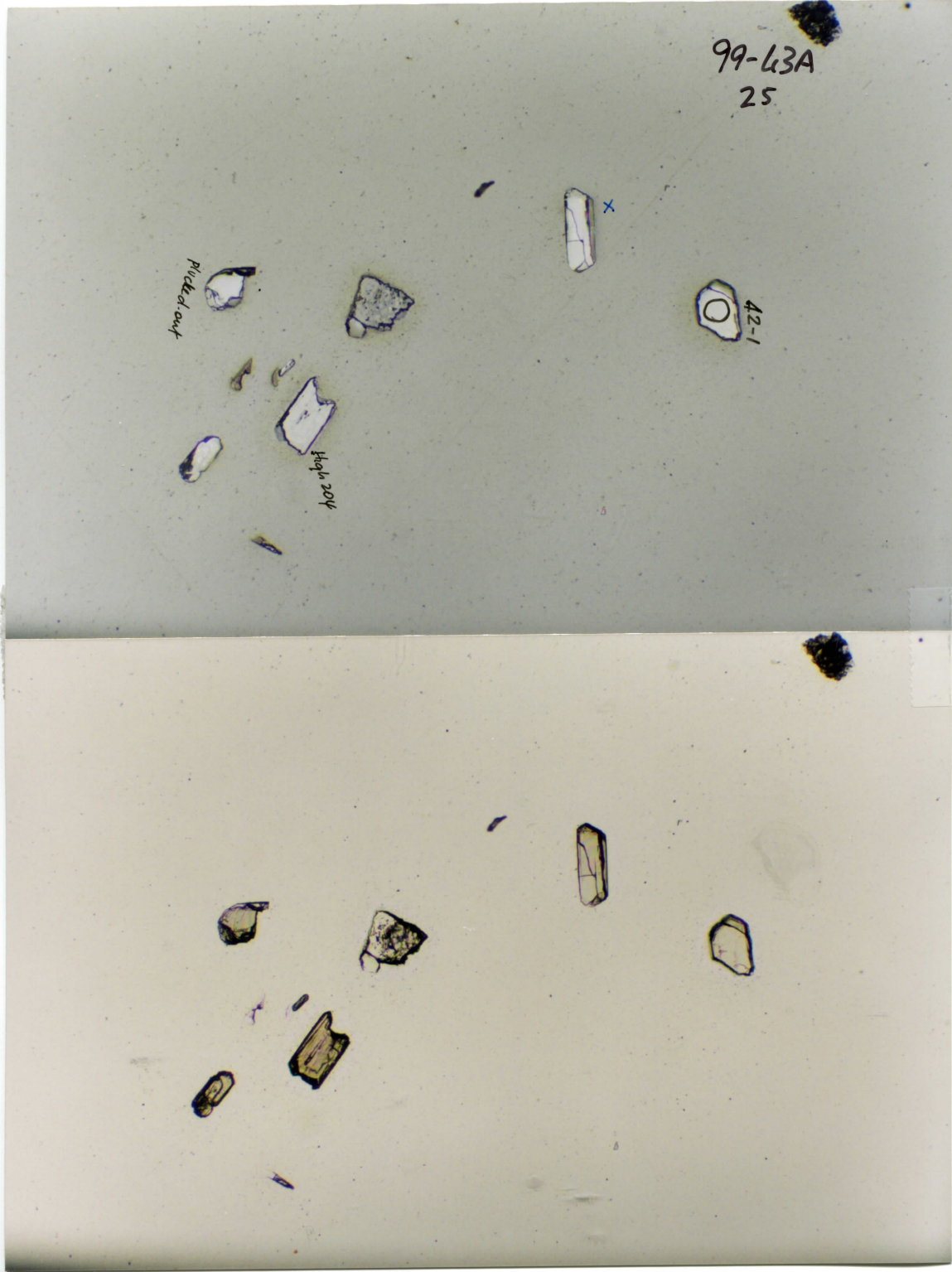


99-63A
25

pickled out

pickled out

42-1



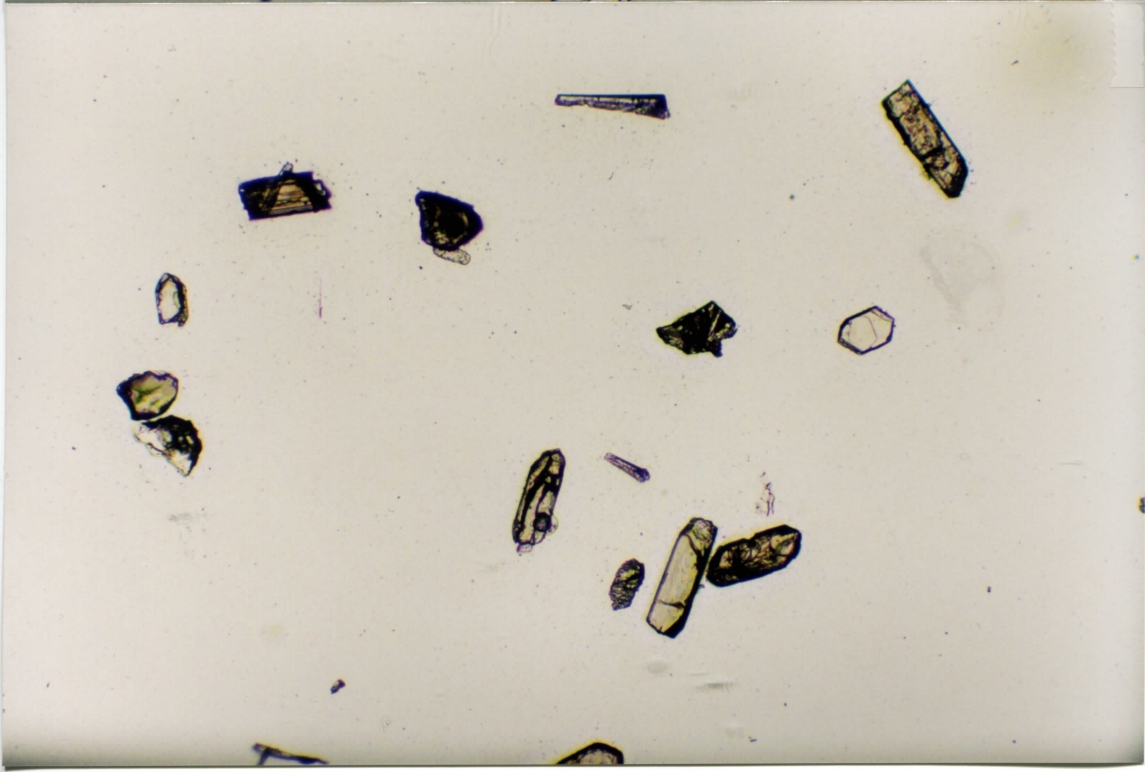
99-43A

26

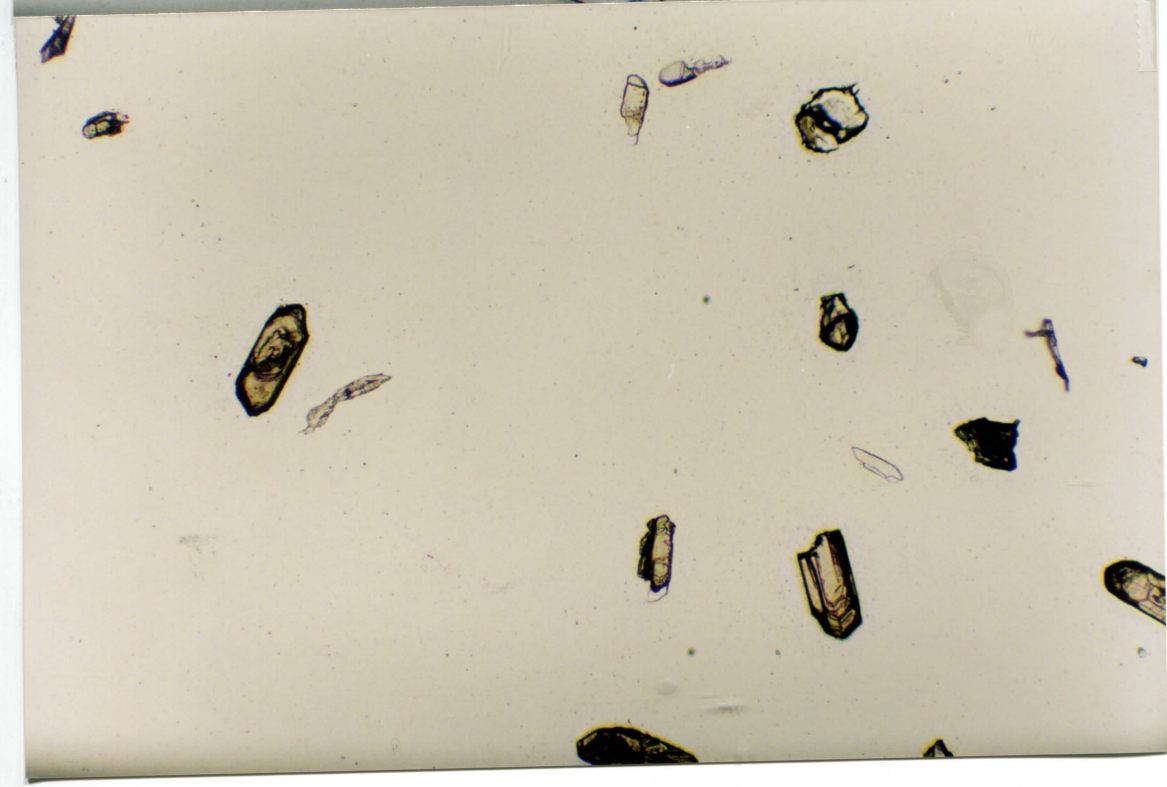
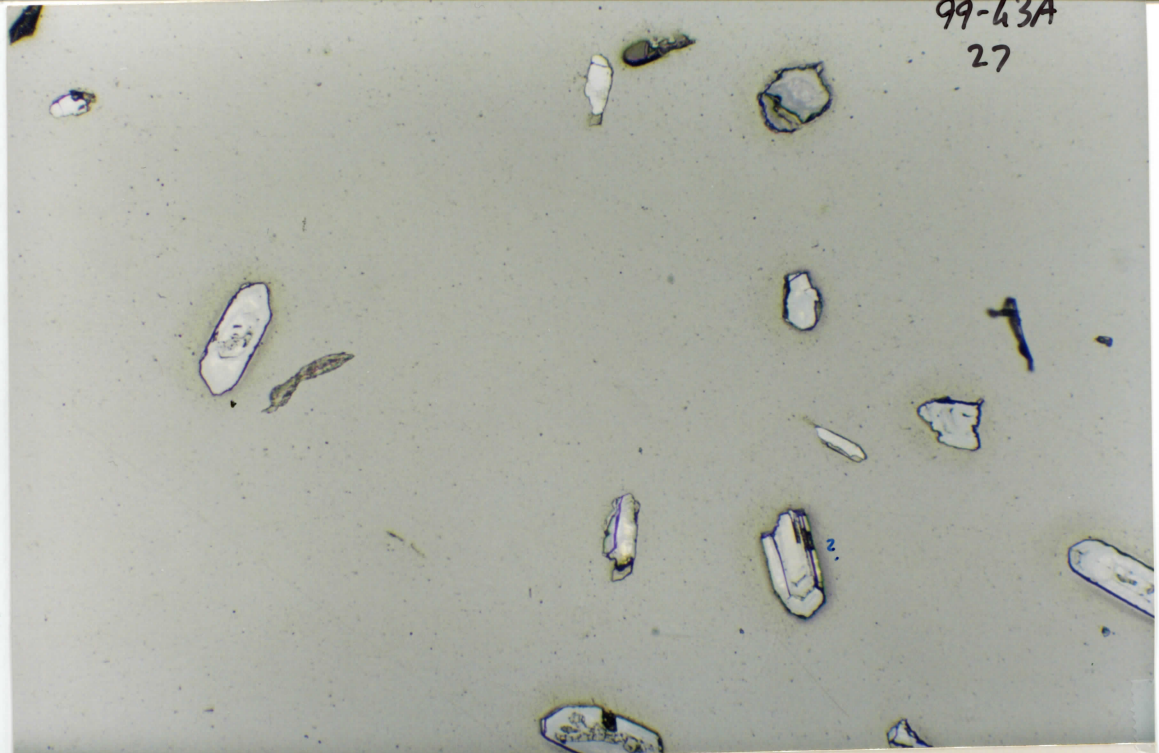
Nf 31

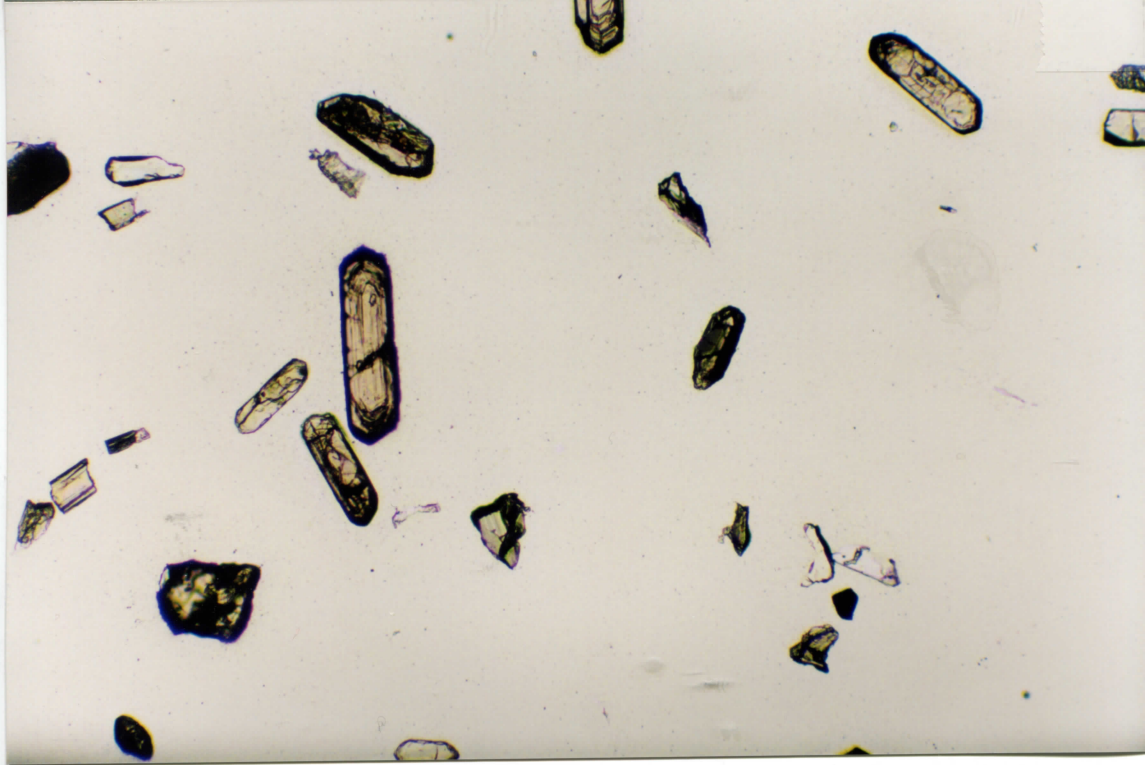
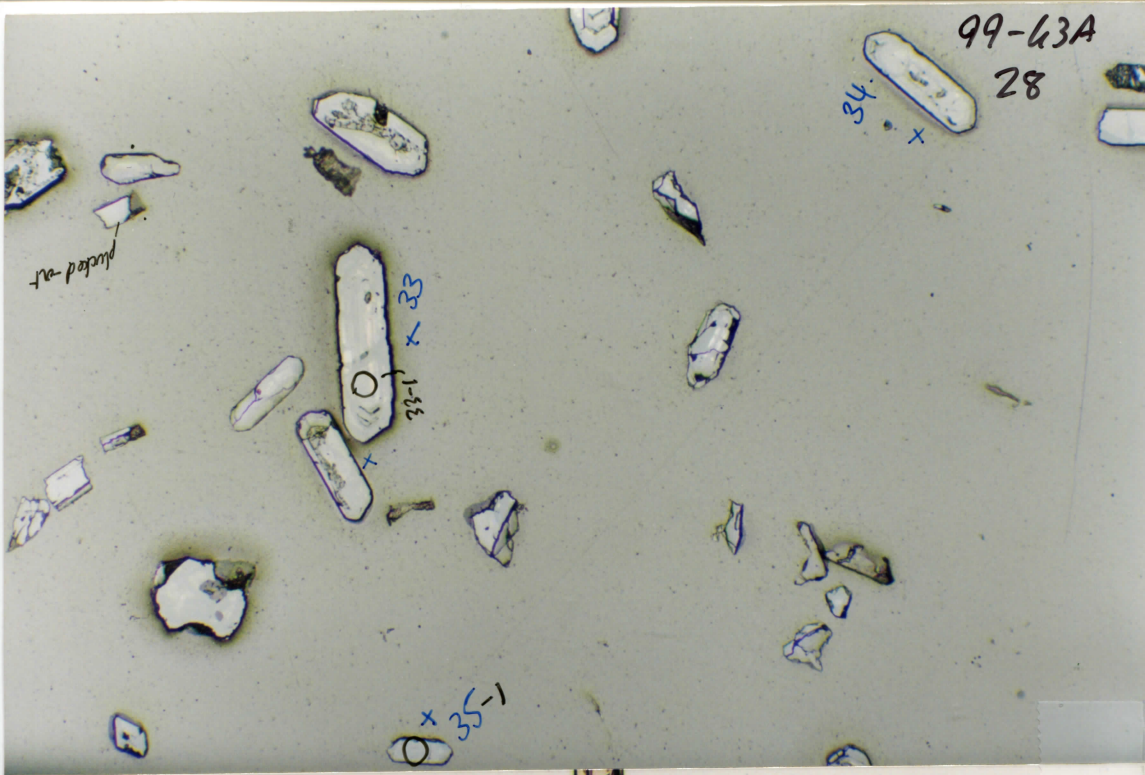
32
1-26 x

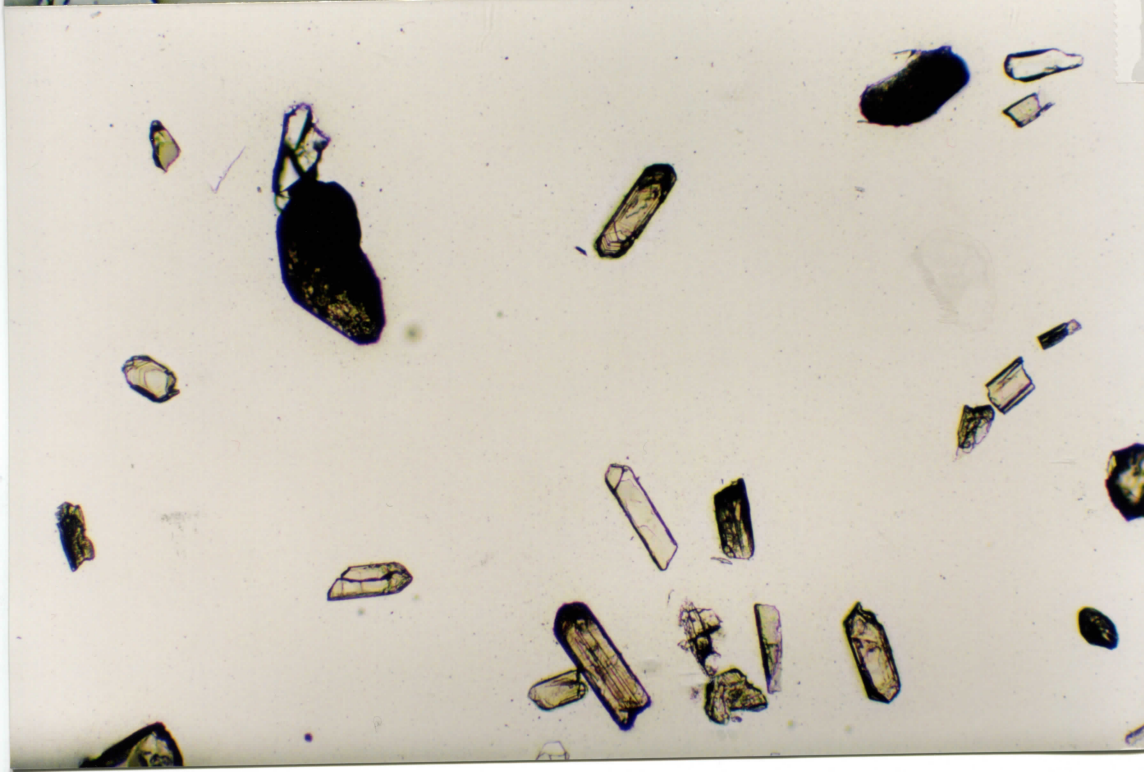
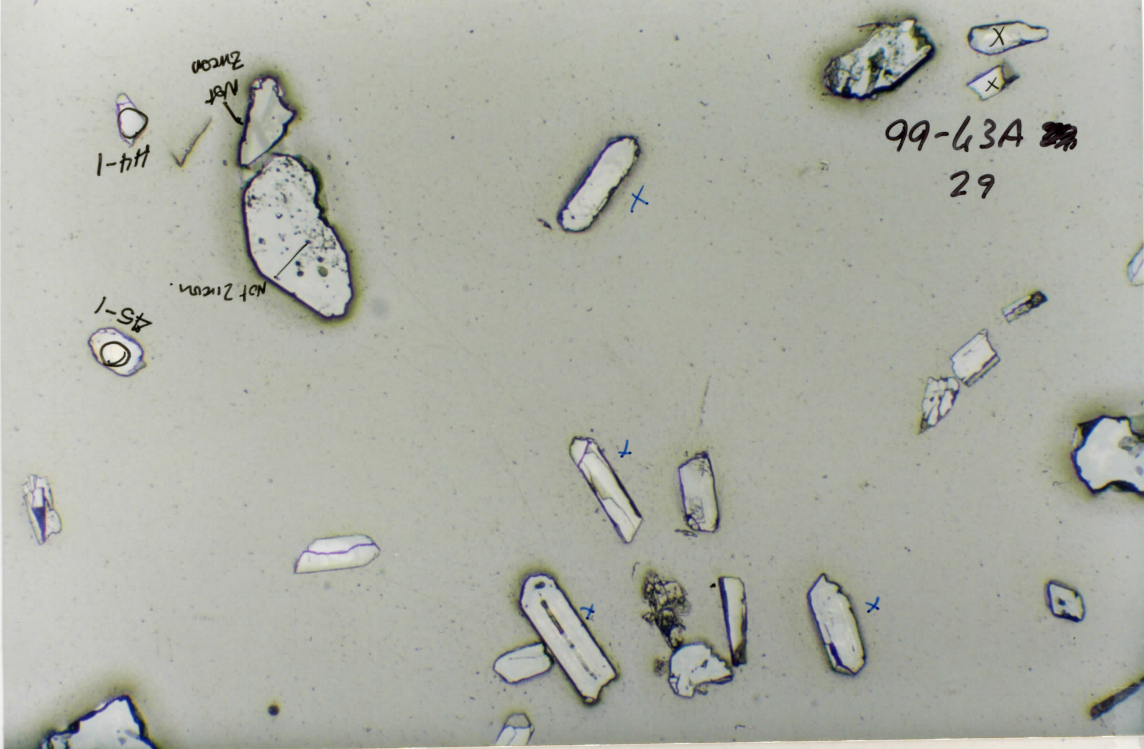
31 +
31-1



99-63A
27







99-63A

30

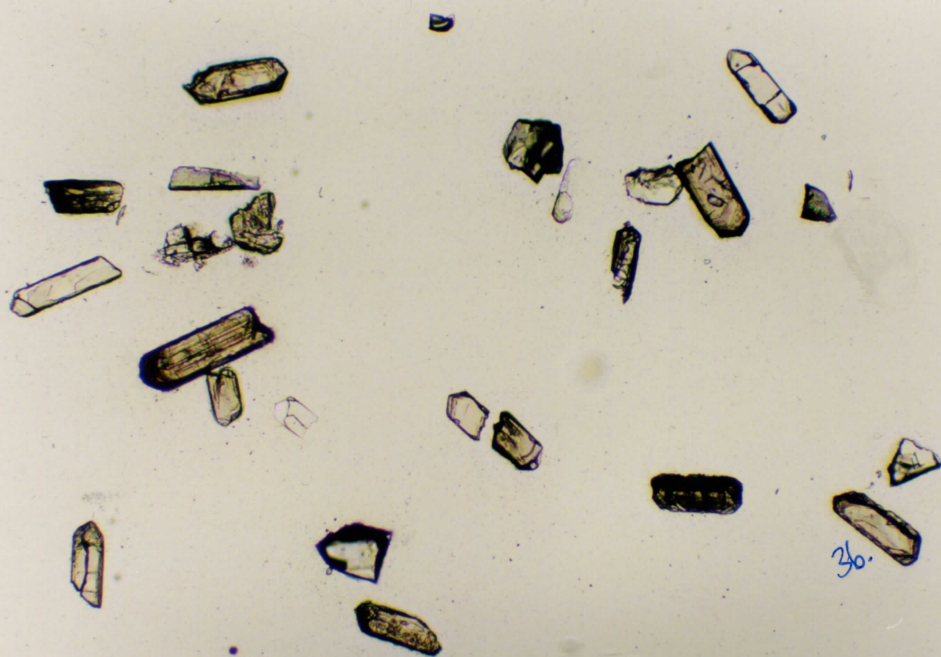
36 x

1-12 x

22
37 x

1-16 x

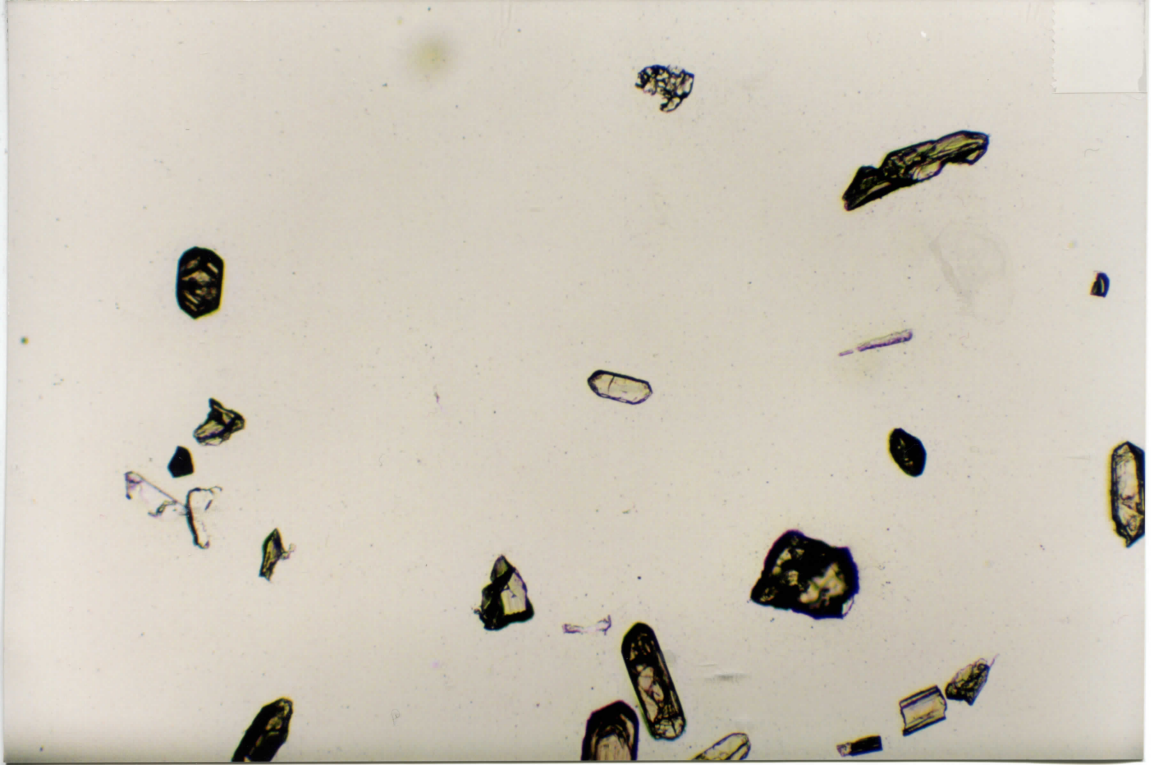
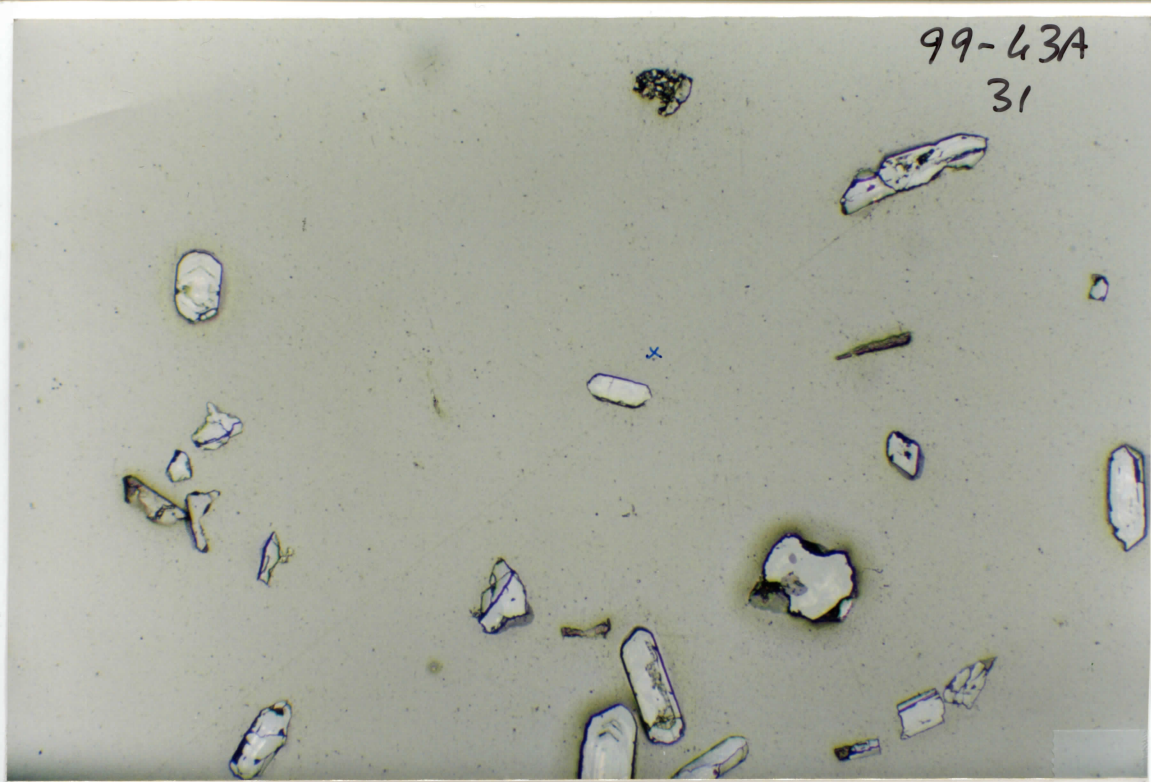
36 x



30.

99-63A

31



99-43A

32

