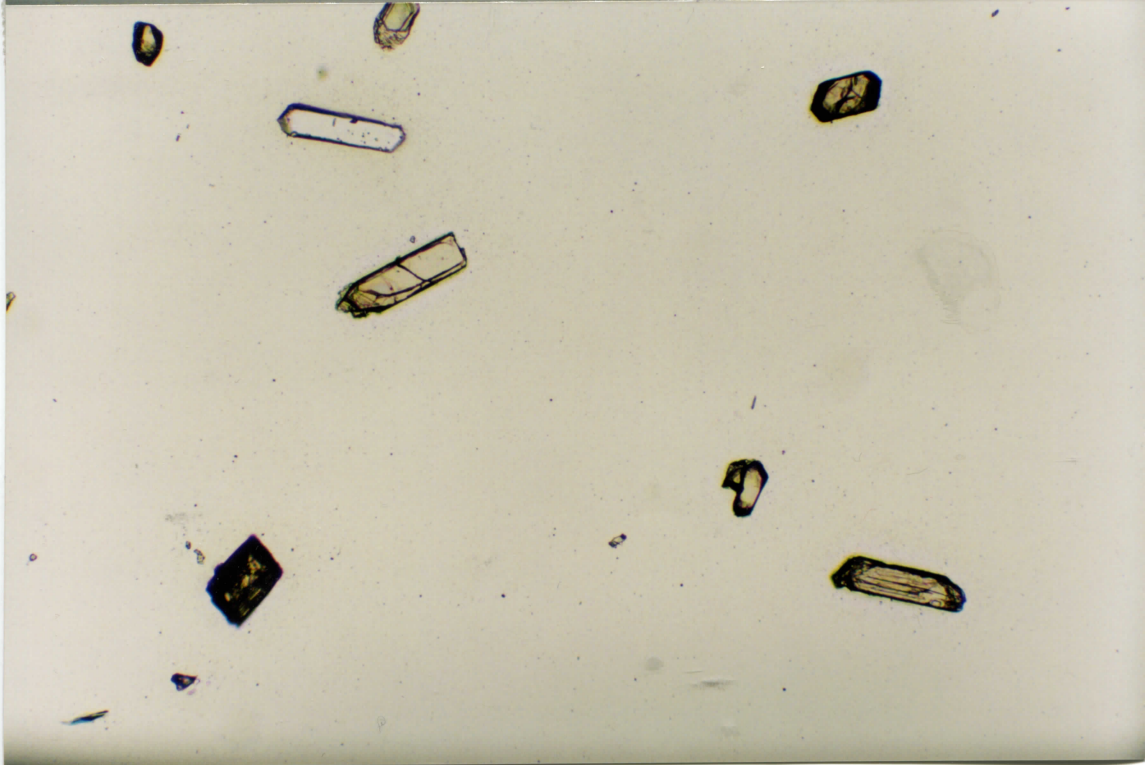
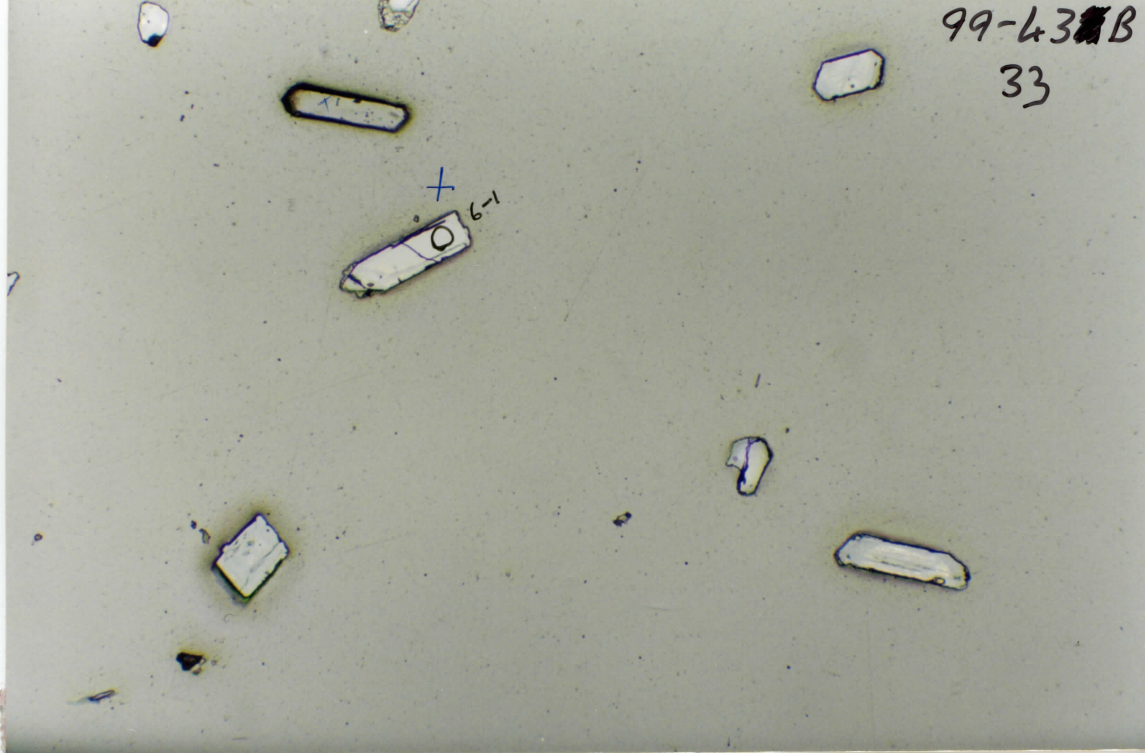


99-43B

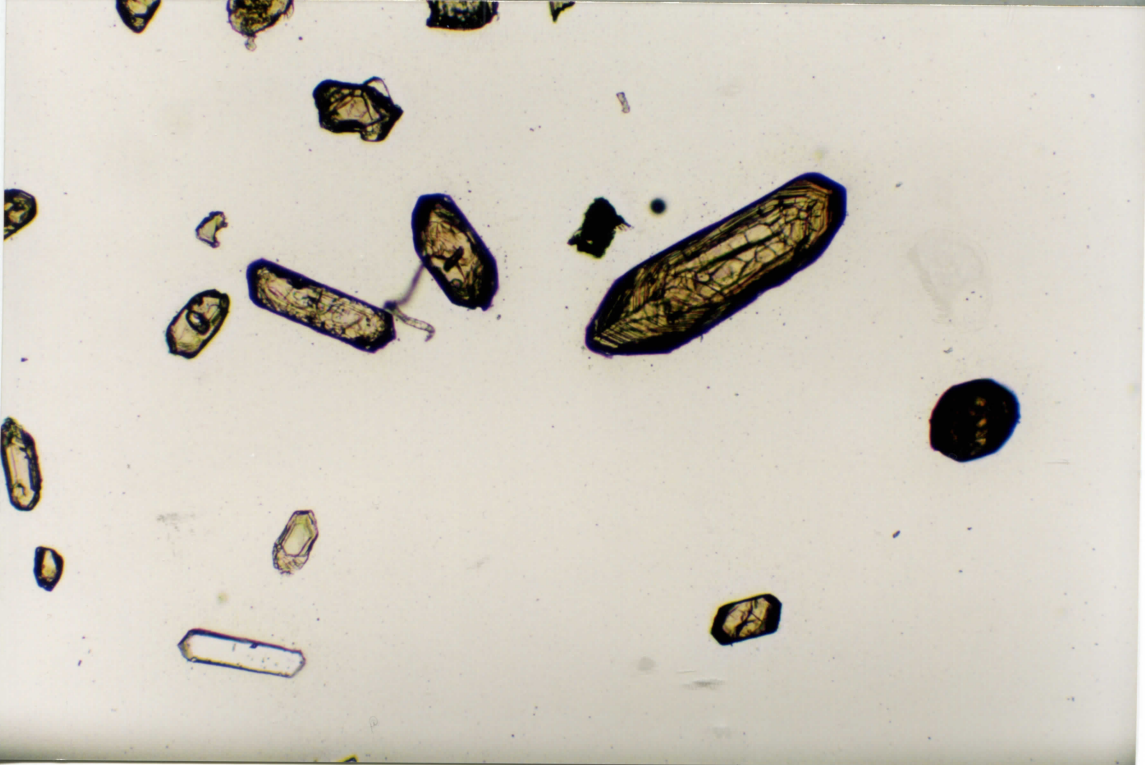
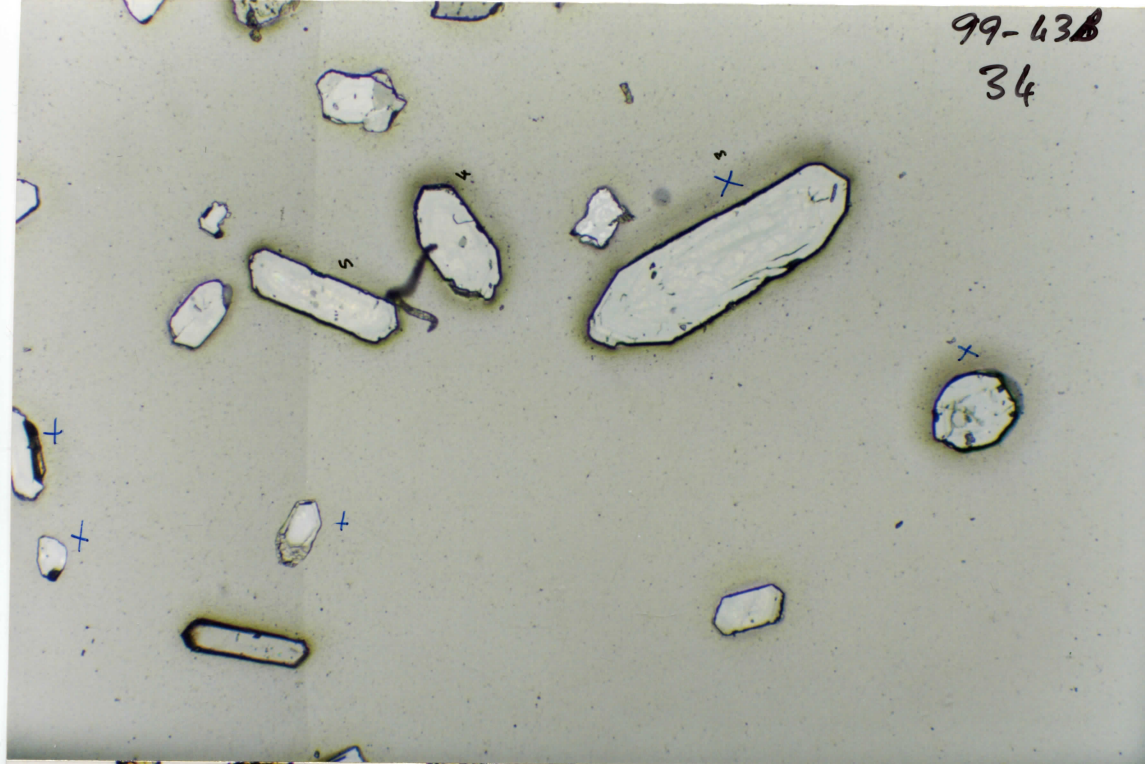
33

+

6-1



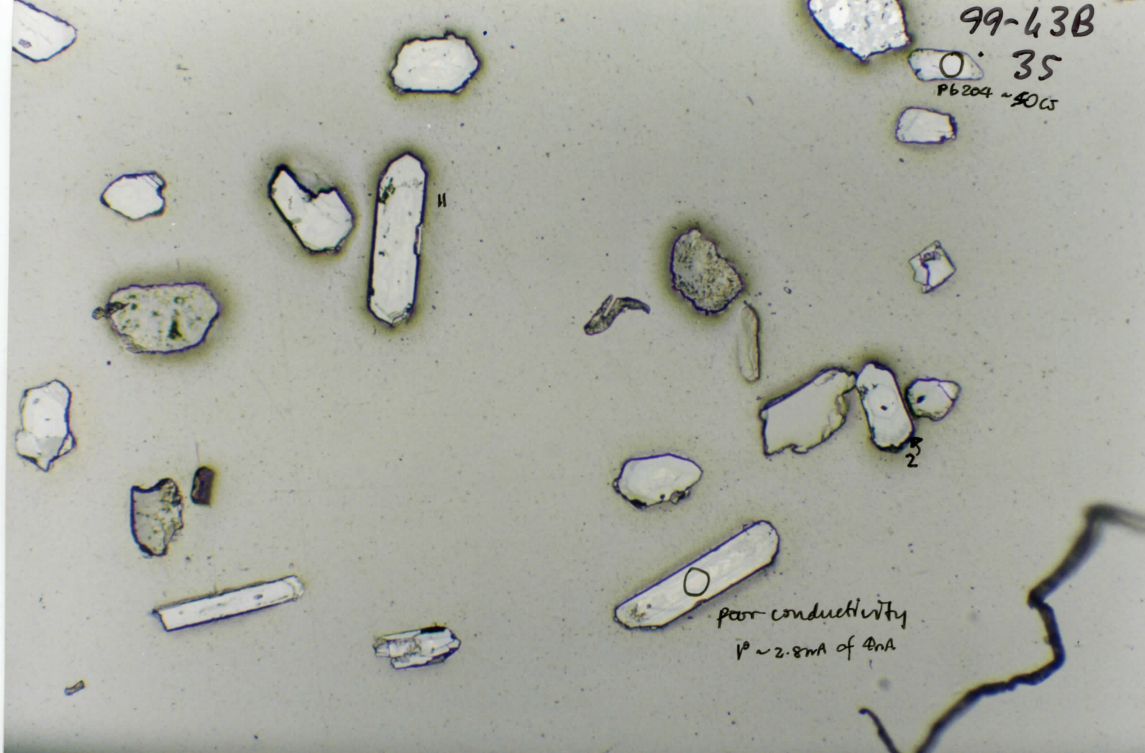
99-43B
34



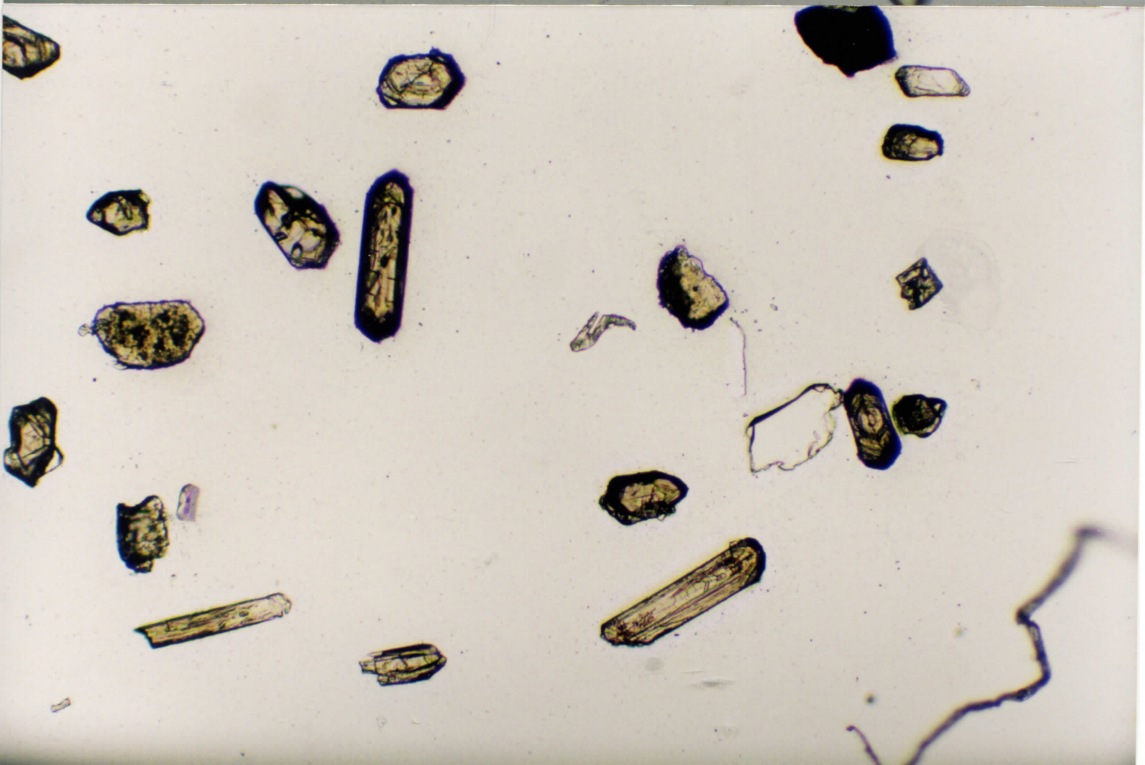
99-43B

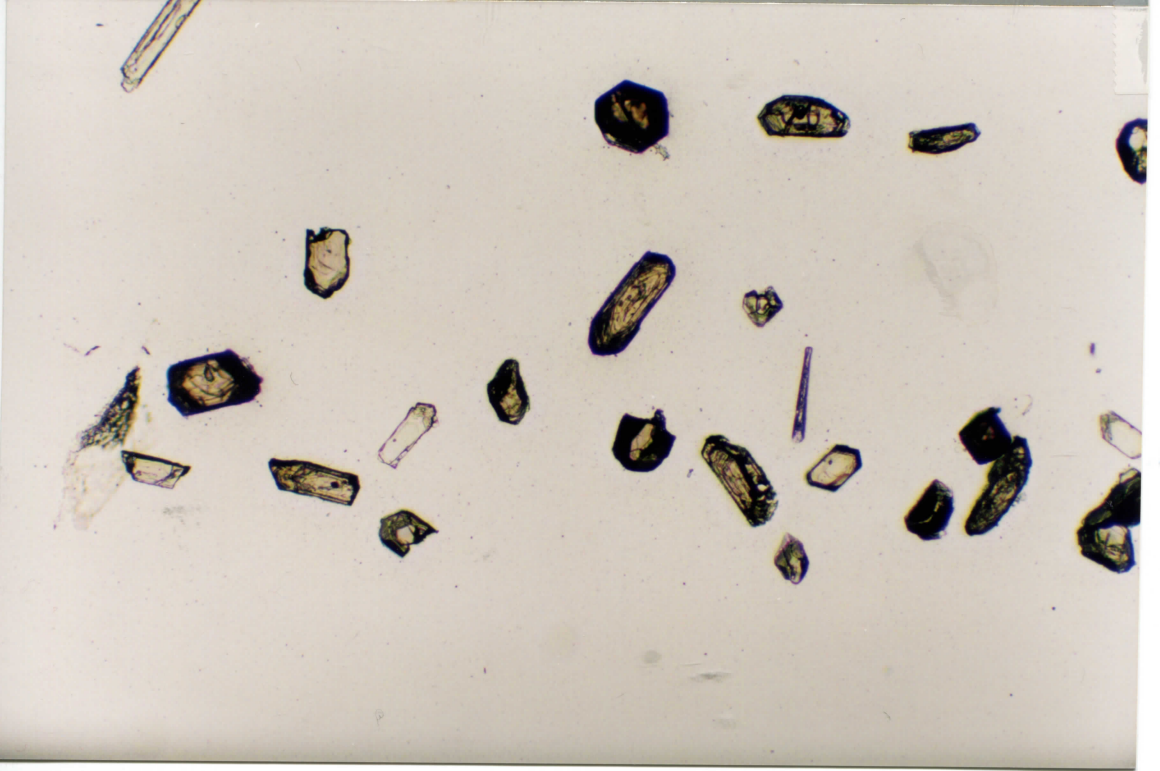
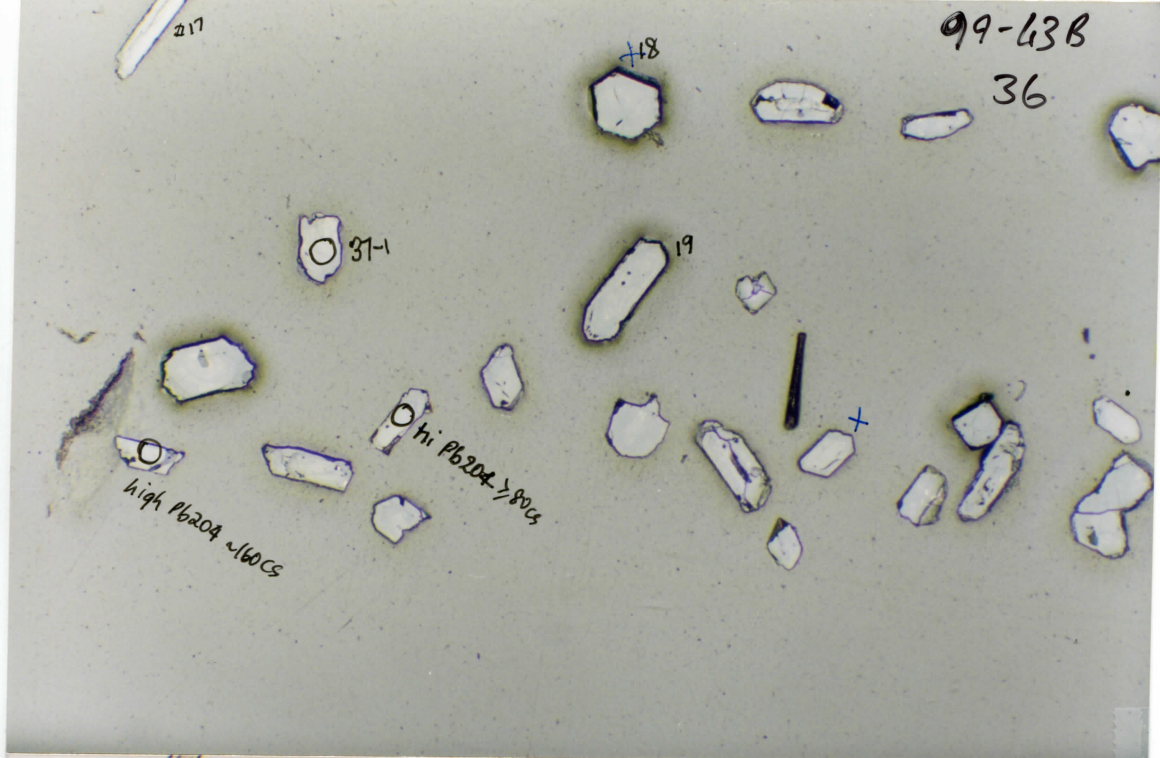
35

P6204 ~90G

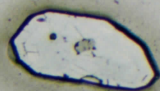
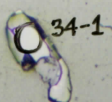


poor conductivity
P ~ 2.8mA of 4mA





99-43B
37



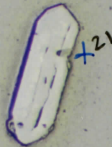
206-1

c. 20

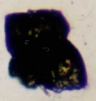
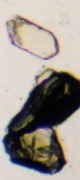
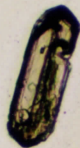
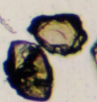
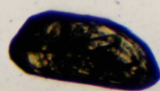
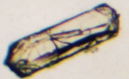
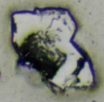
a.

202-1

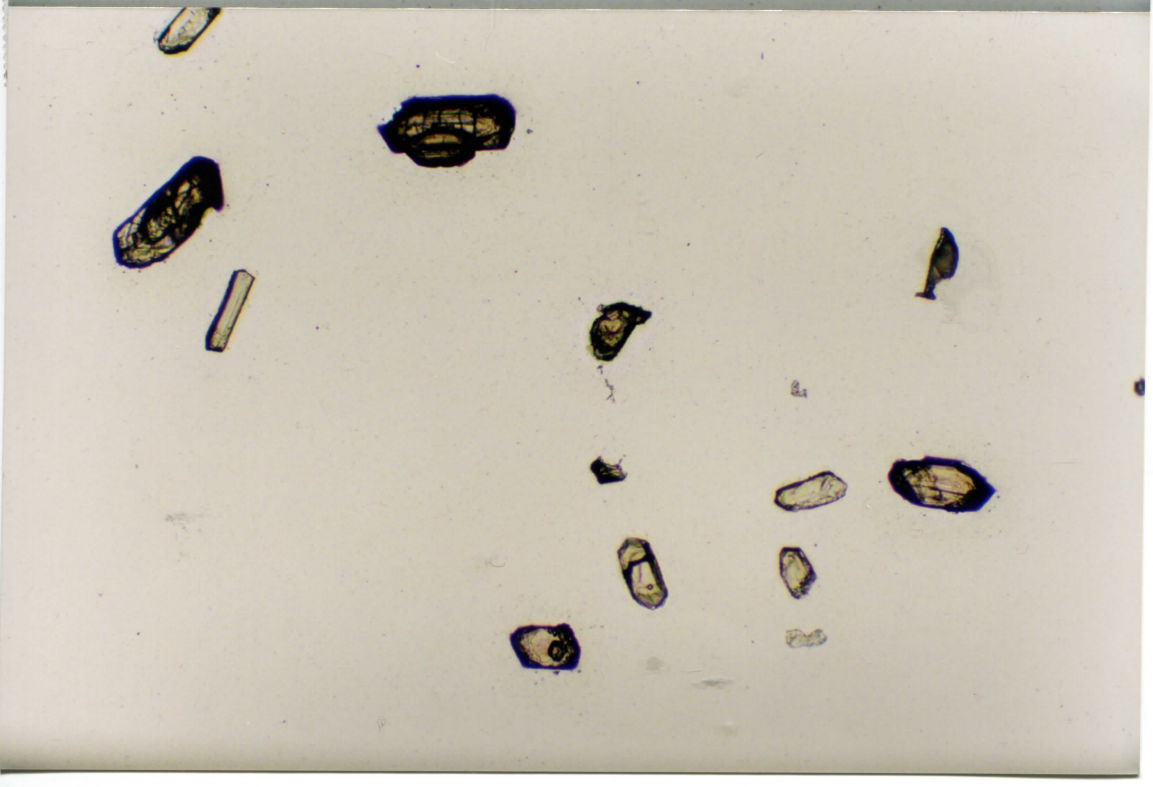
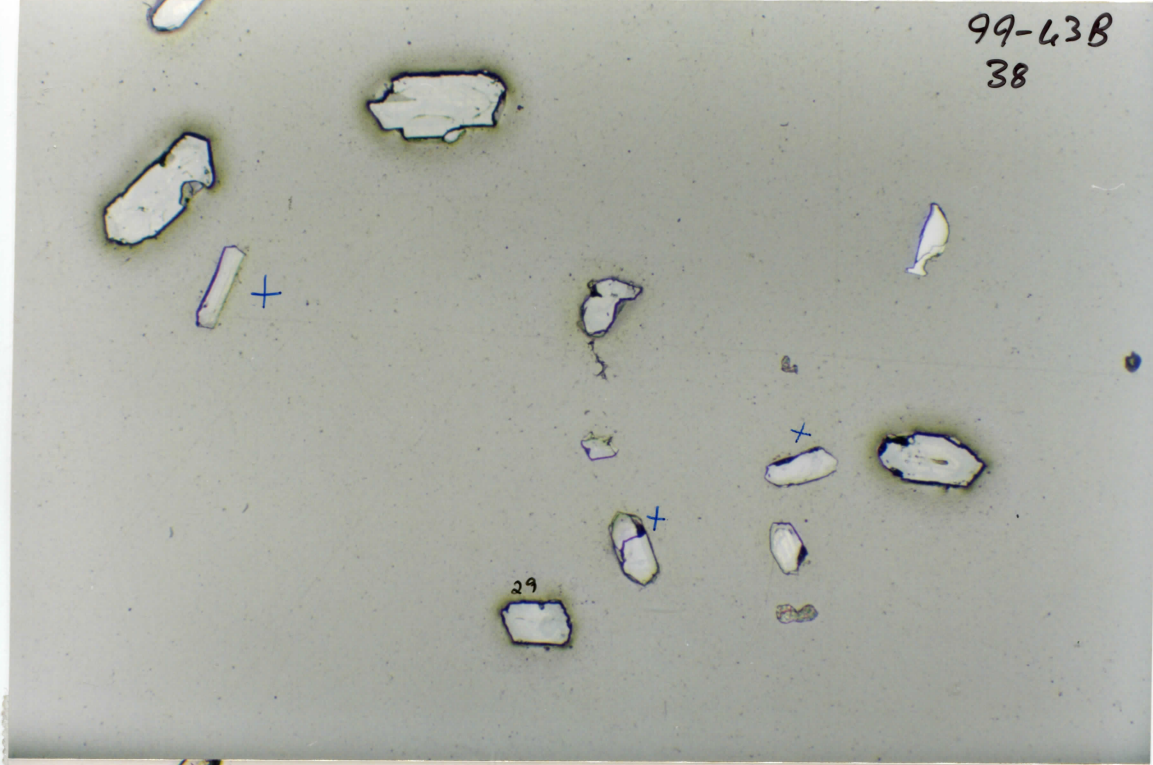
+21



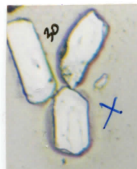
+ high Pb 204/2100 cs



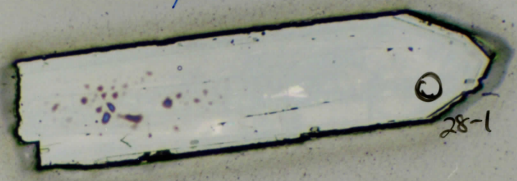
99-43B
38



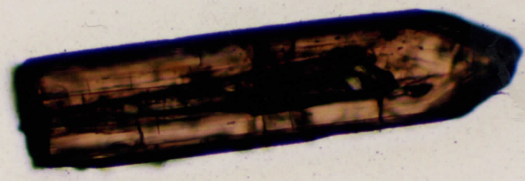
99-43B
39



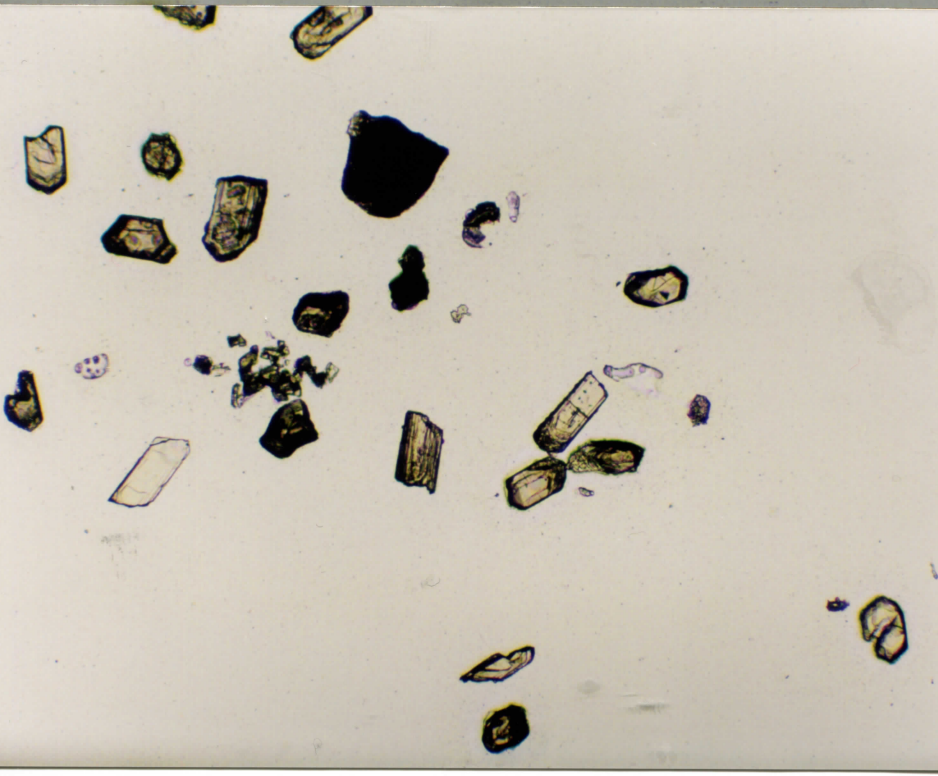
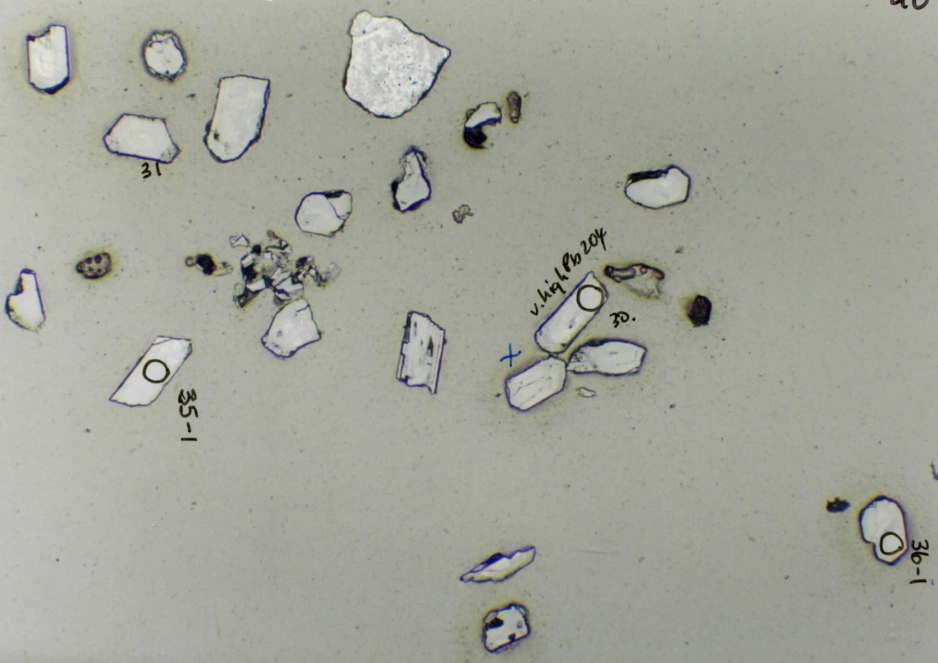
28



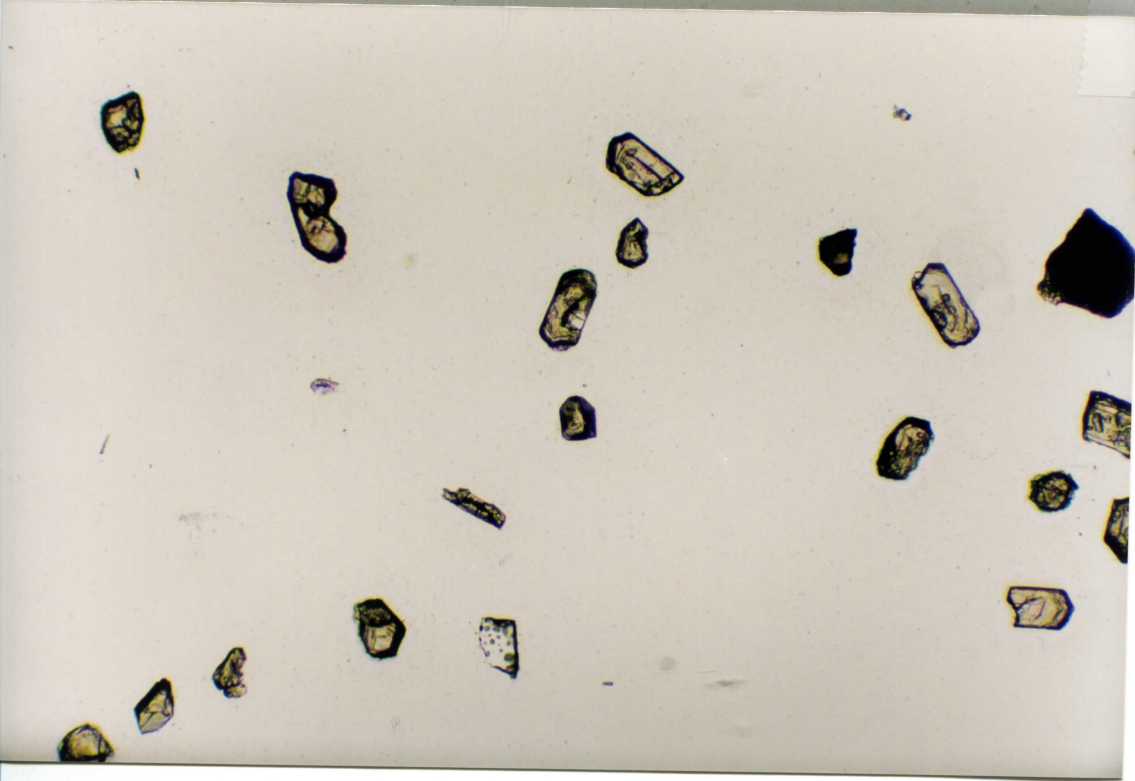
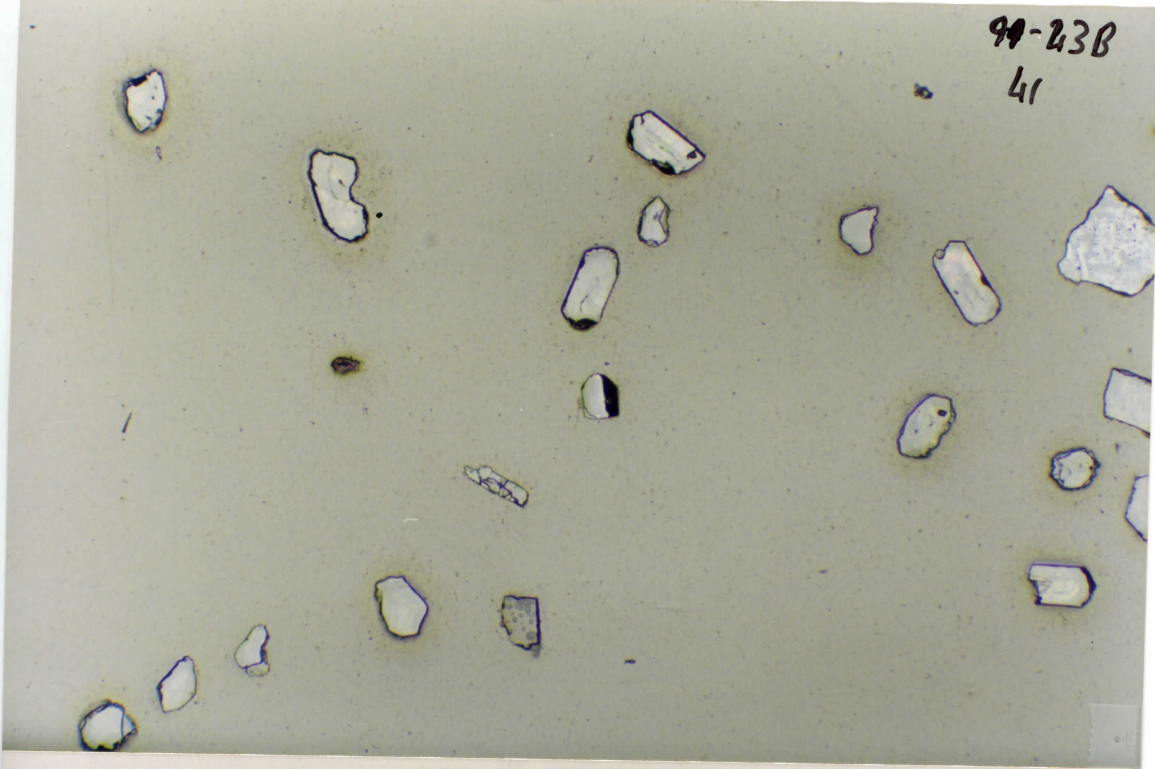
28-1



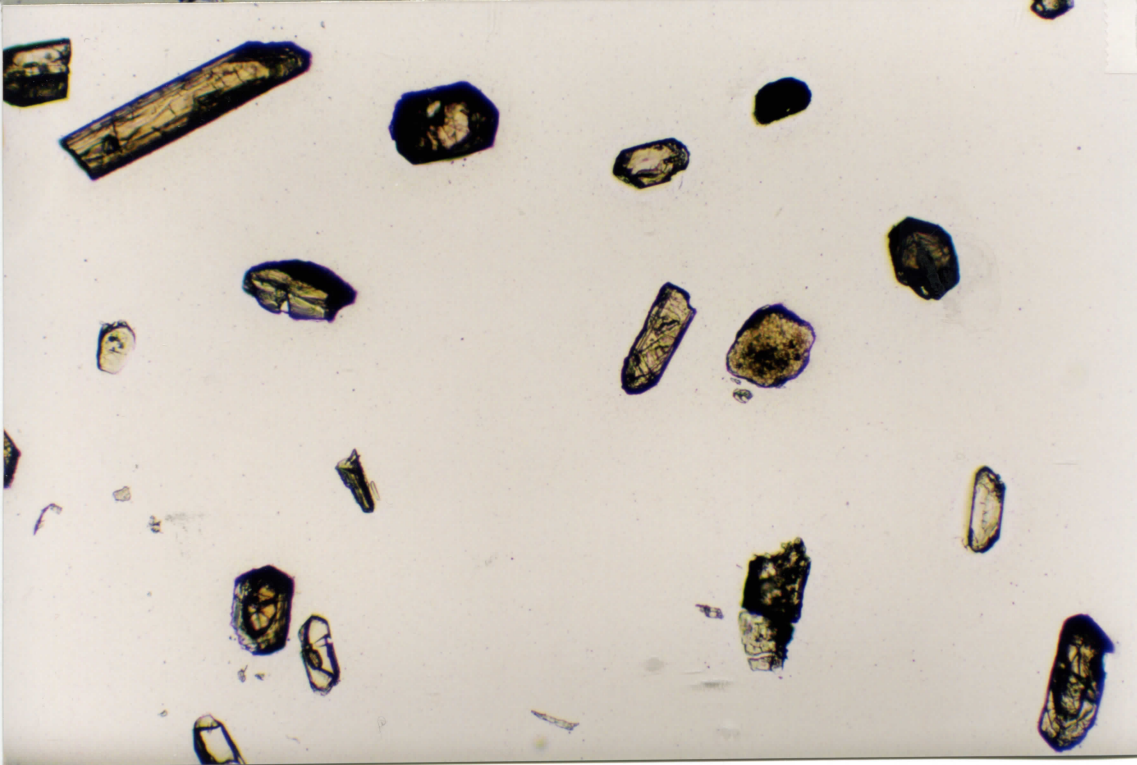
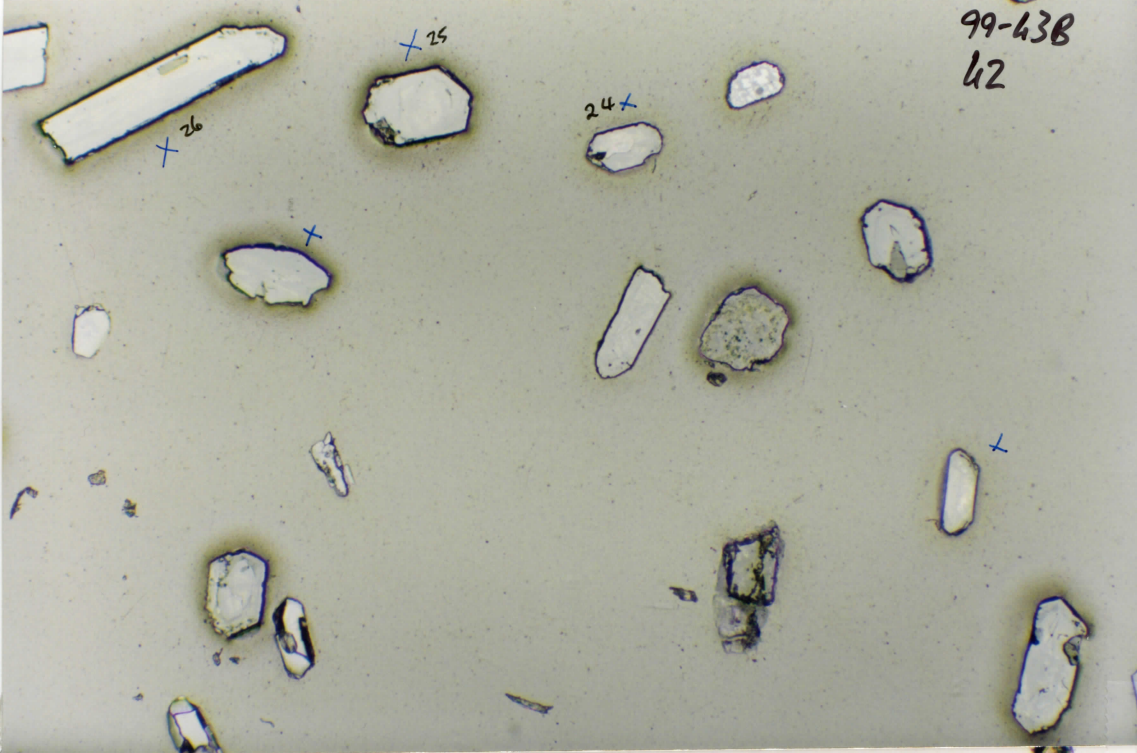
99-43B
40

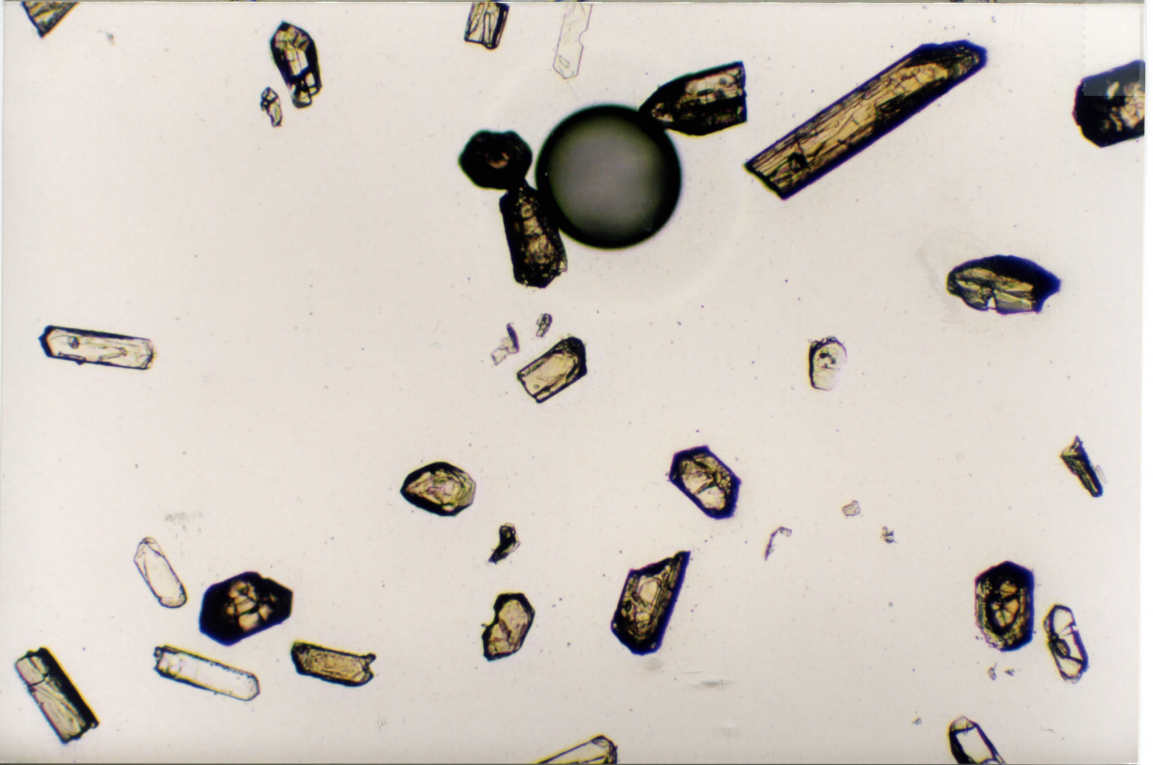
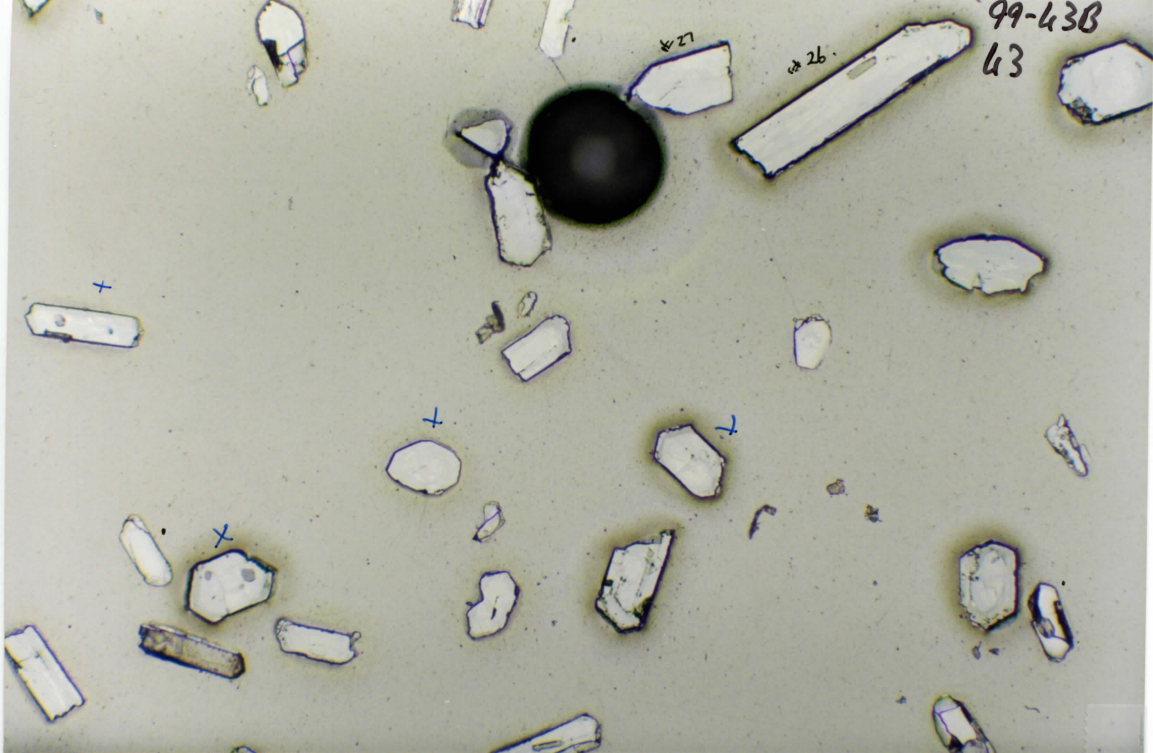


99-23B
41



99-43B
42





99-43B

44

x5

x

41-1

40-1

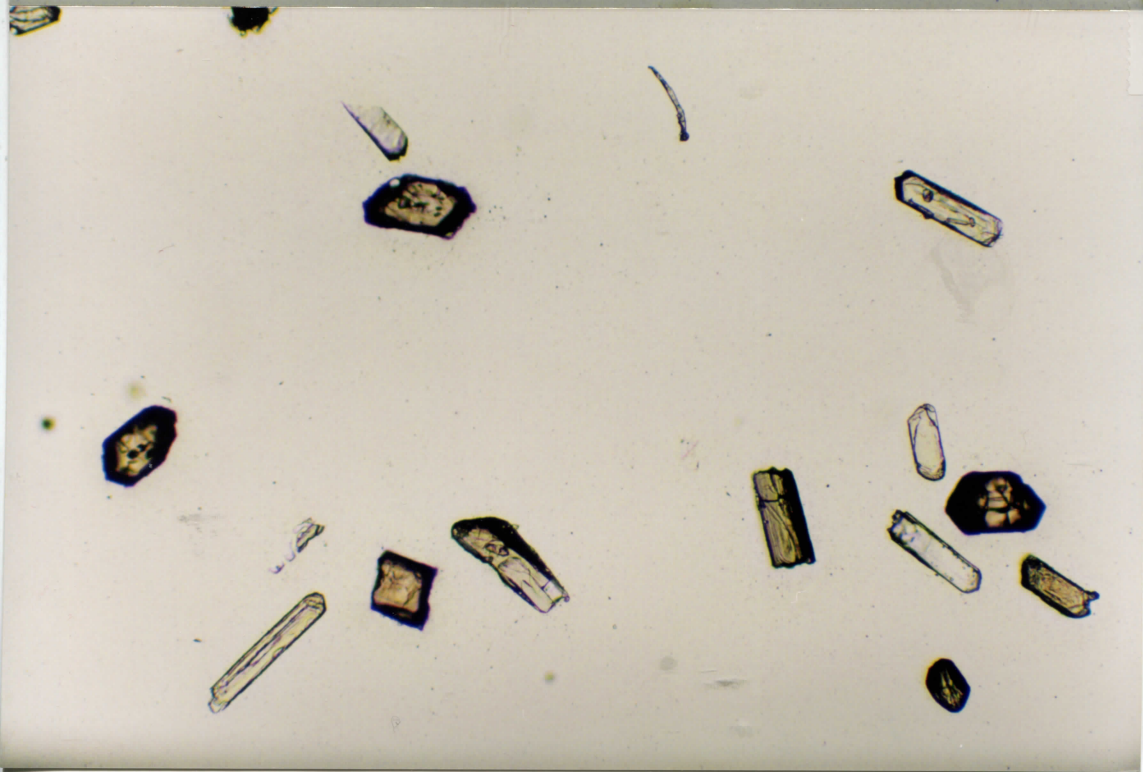
x

39-1

38-1

x17

x16



99-43B
45

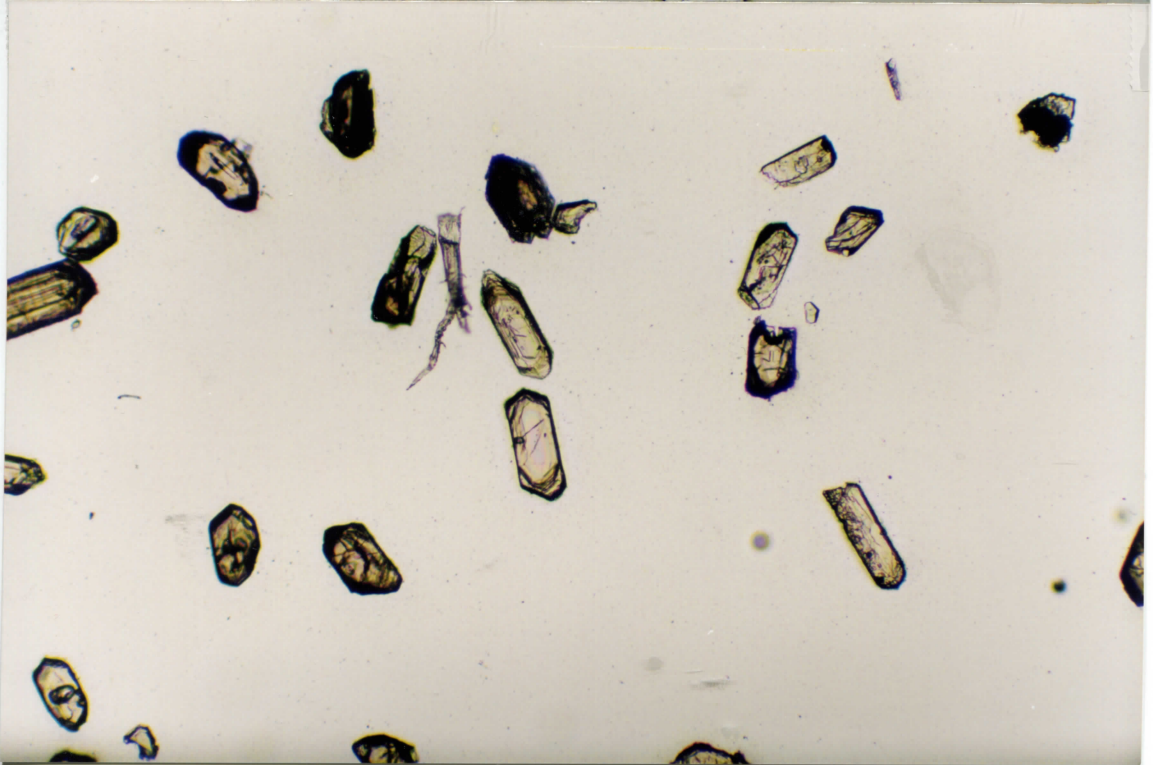
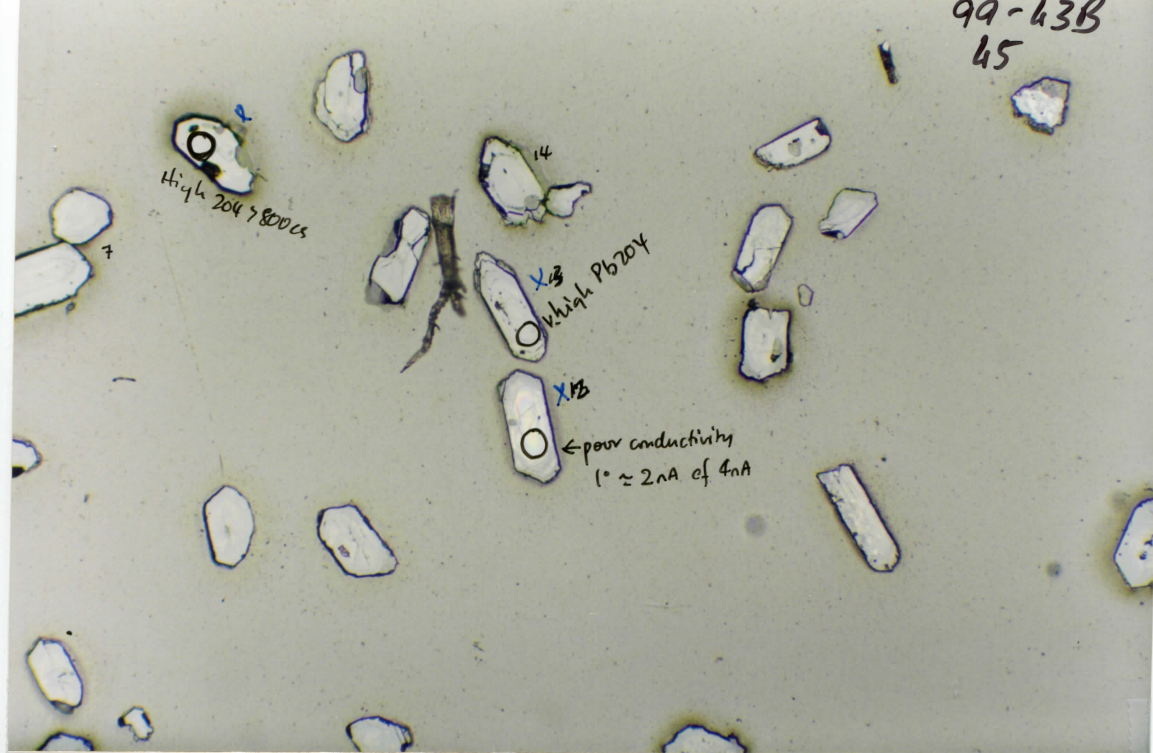
High 204 7800cs

14

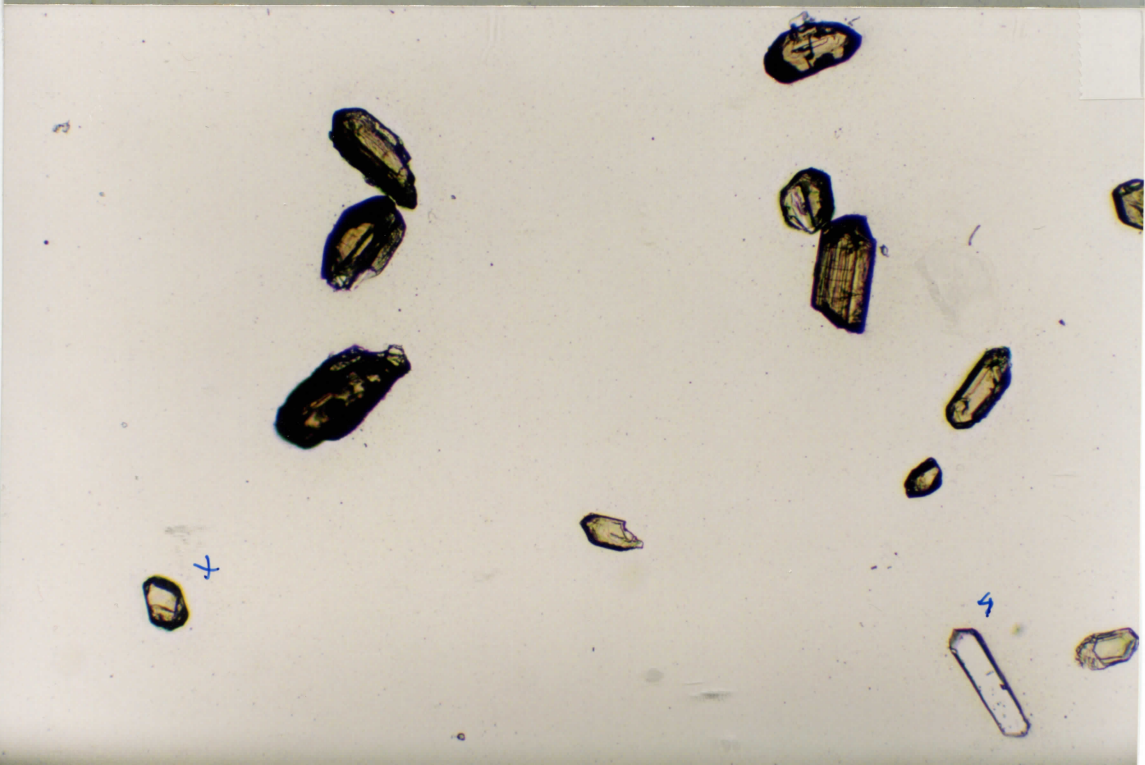
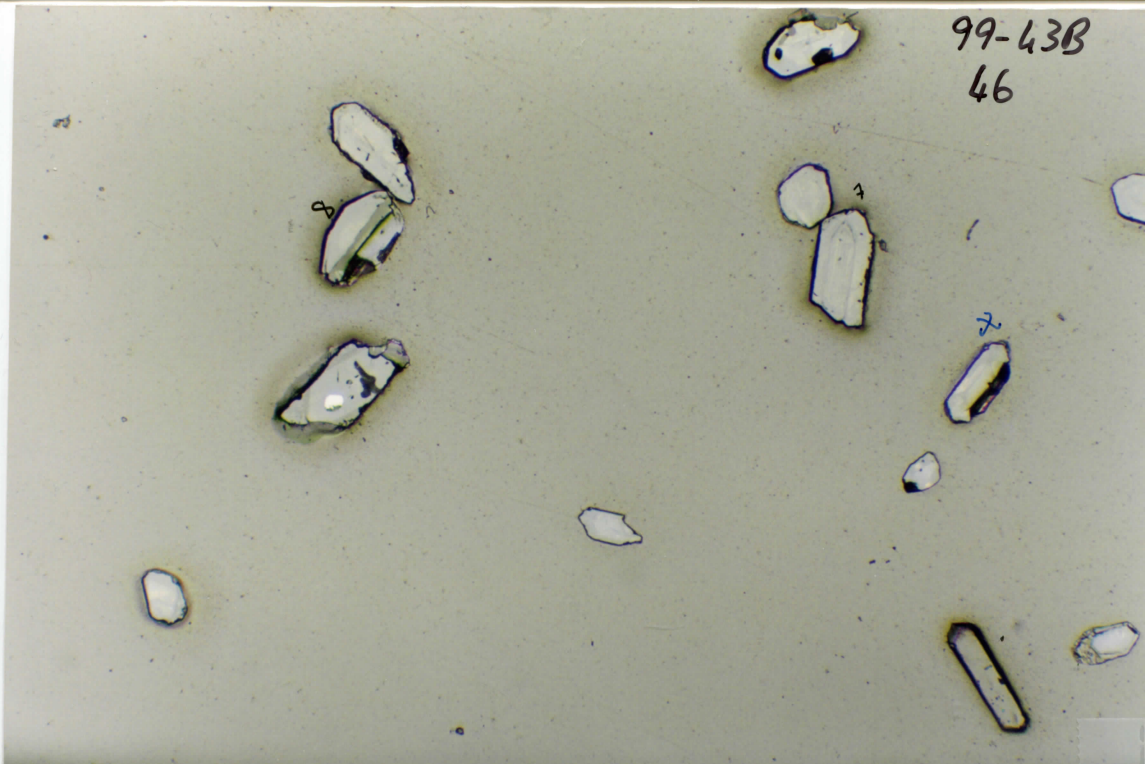
X₁₃

X₁₃

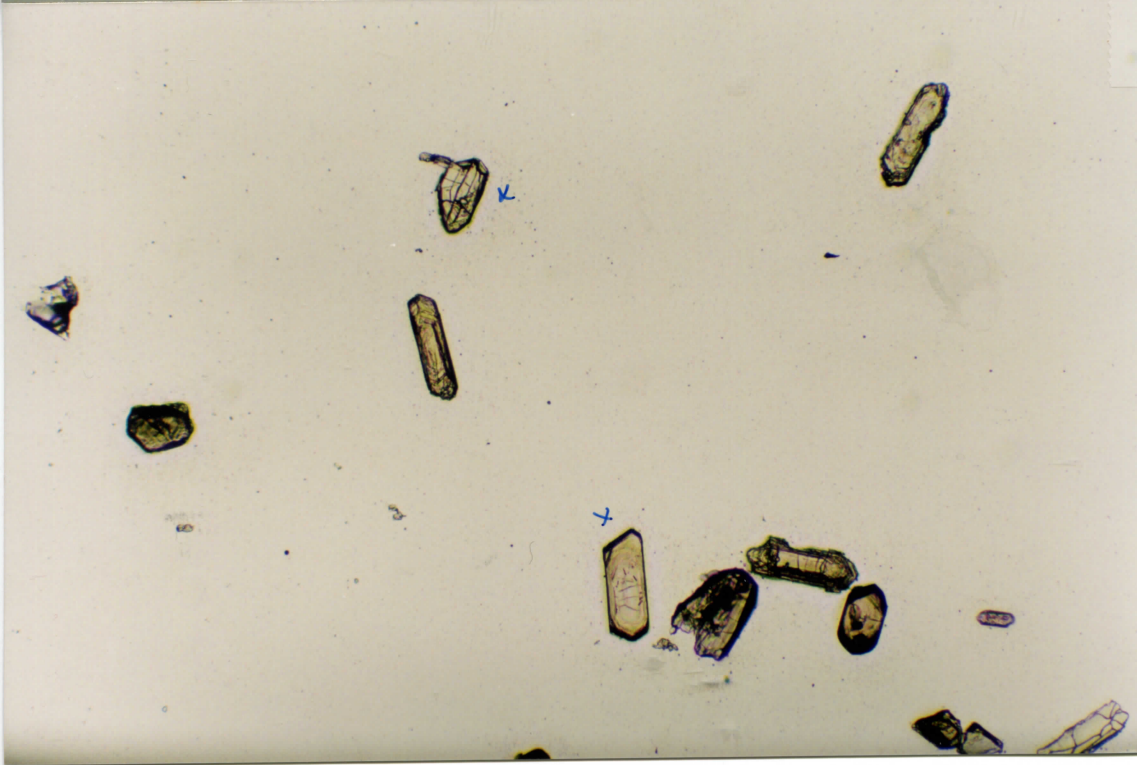
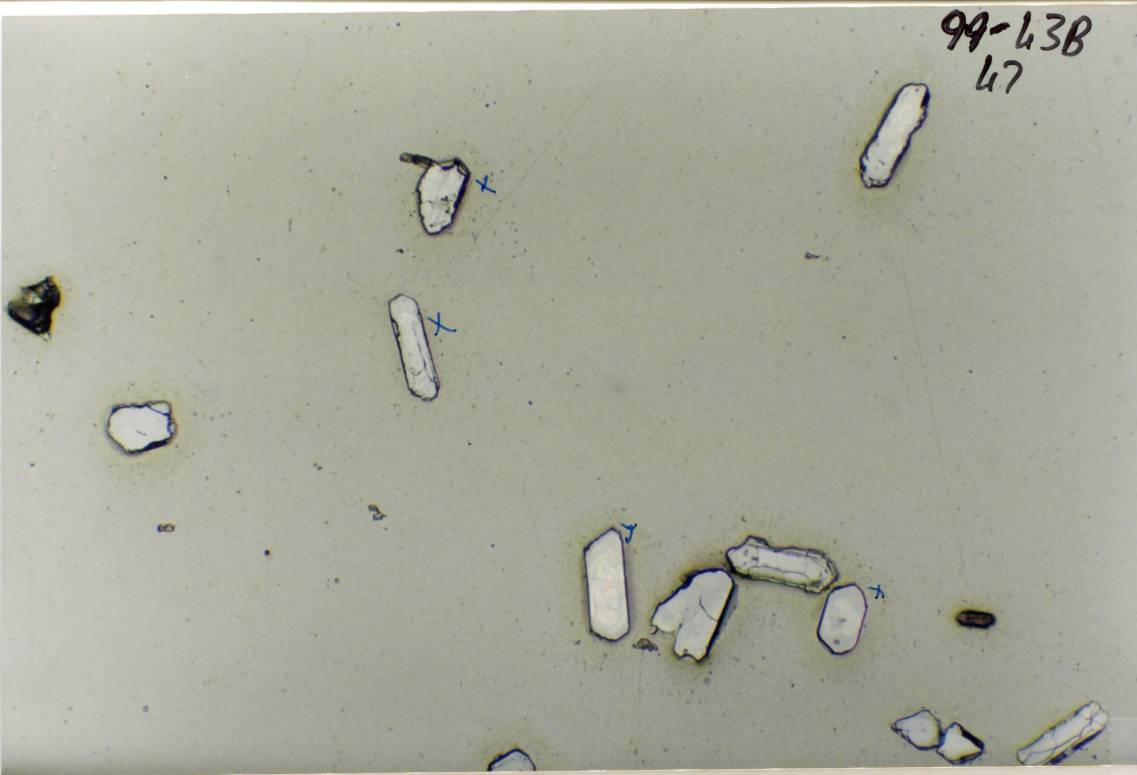
← poor conductivity
I⁰ ≈ 2nA of 4nA



99-43B
46

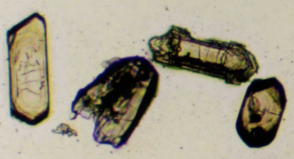
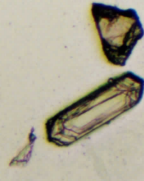
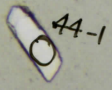
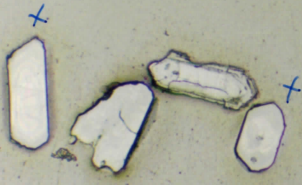
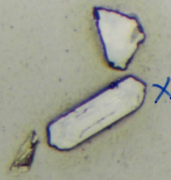


99-63B
47

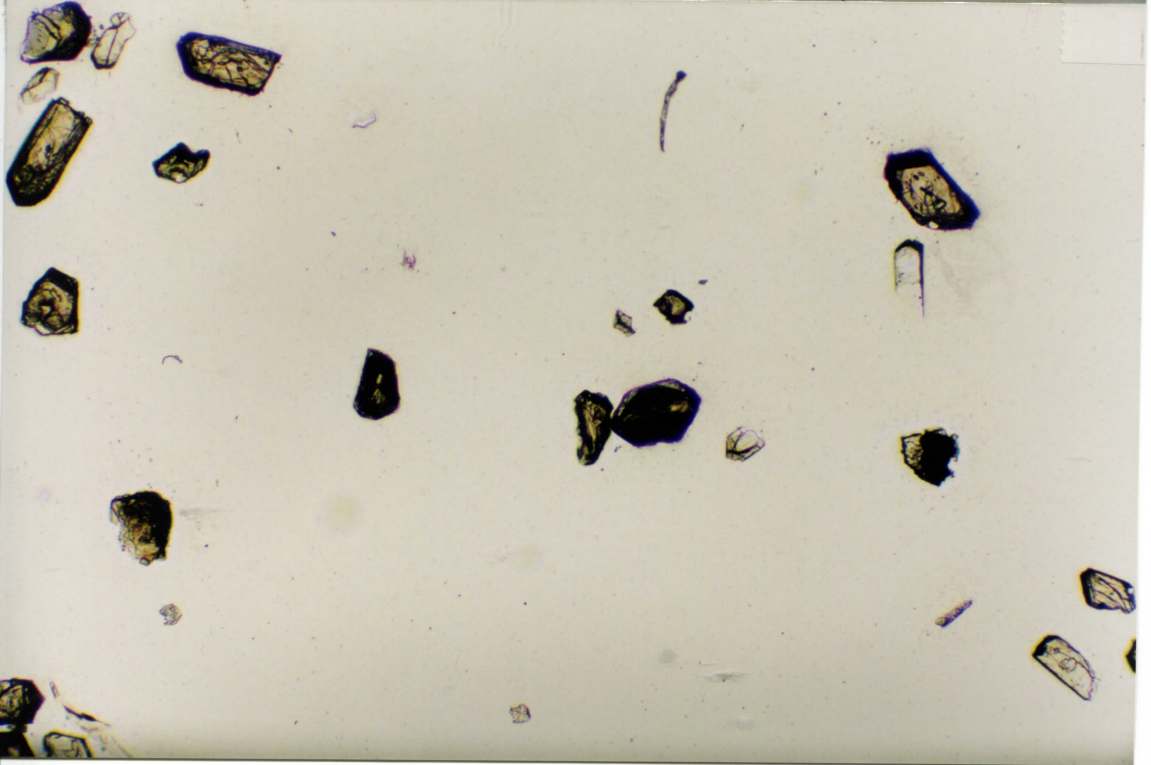
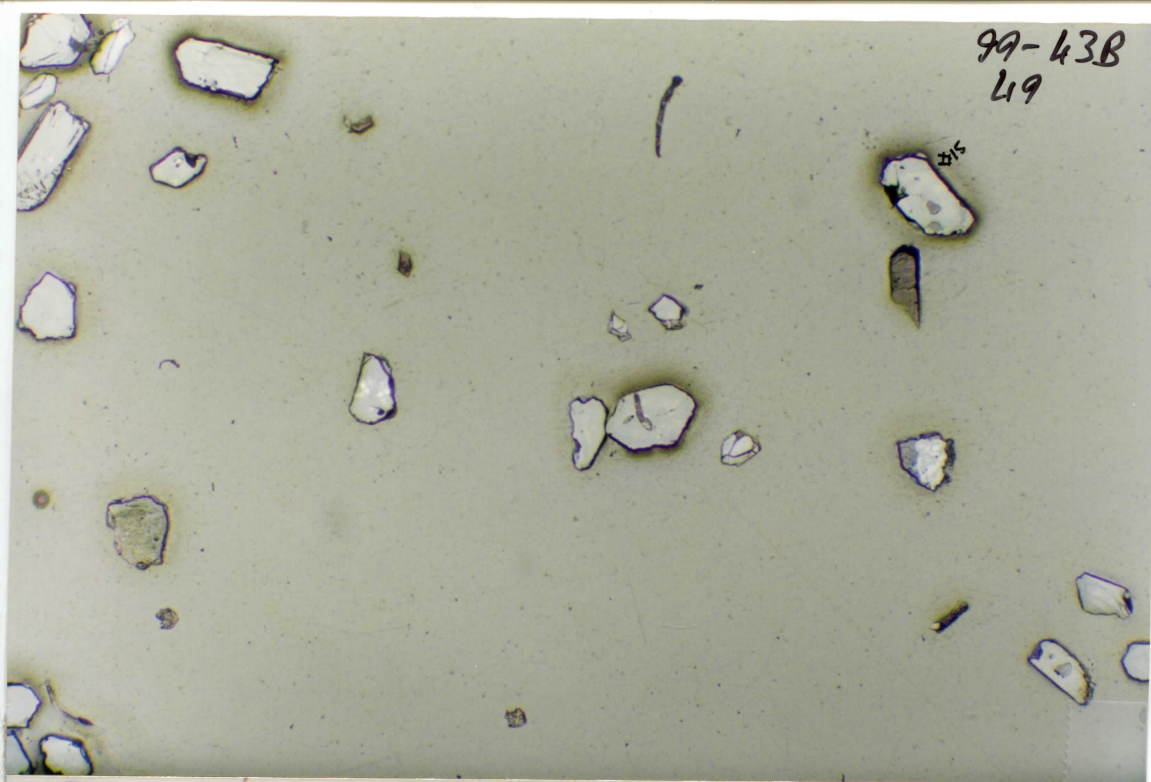


99-43B

48



99-43B
49



99-43B

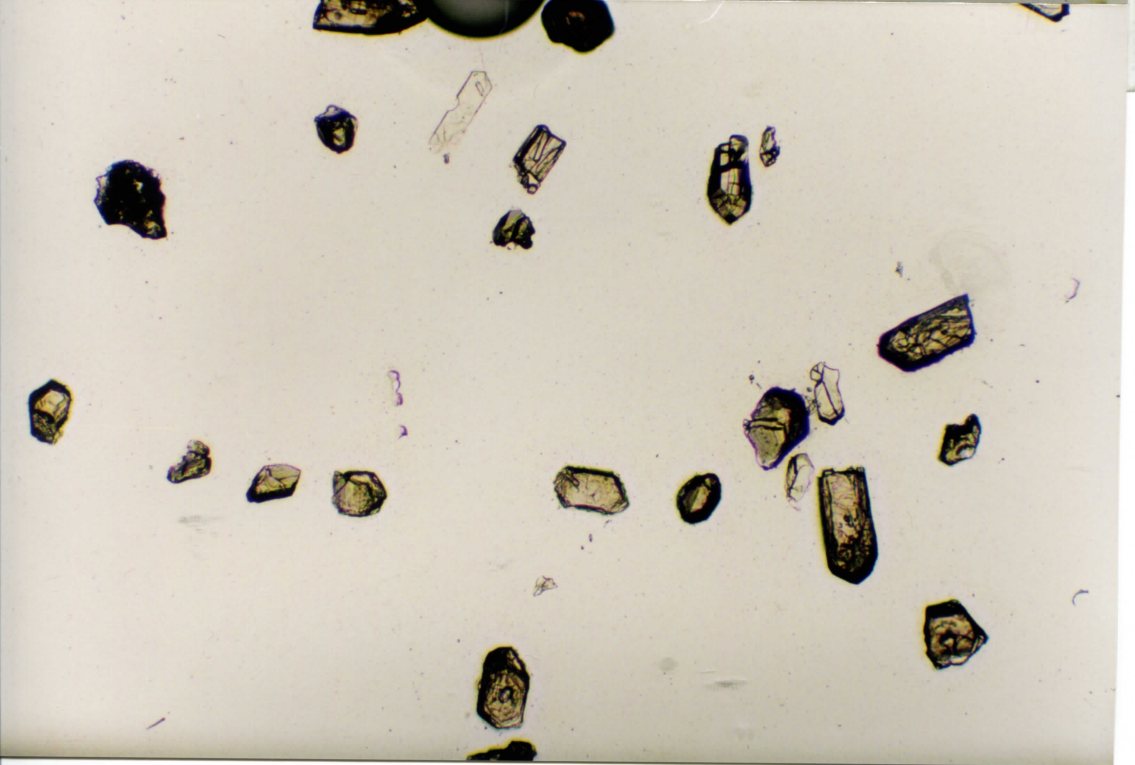
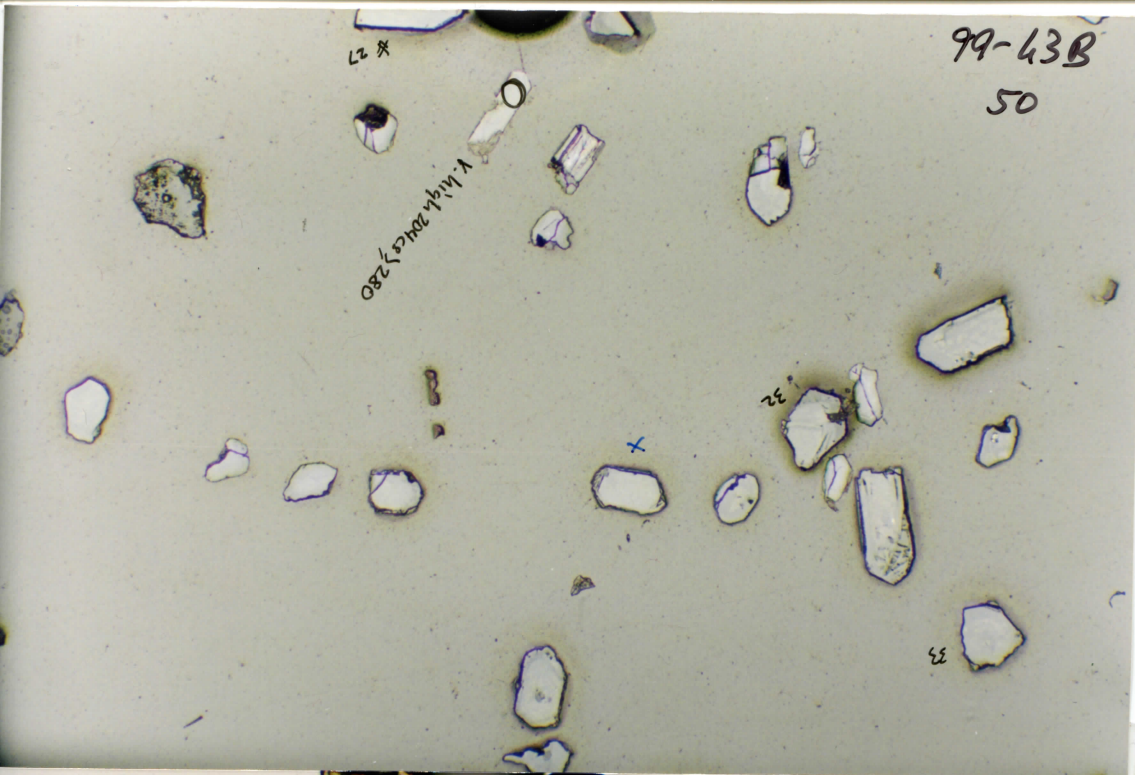
50

27 *

Y. M. H. H. 2014 280

22

23

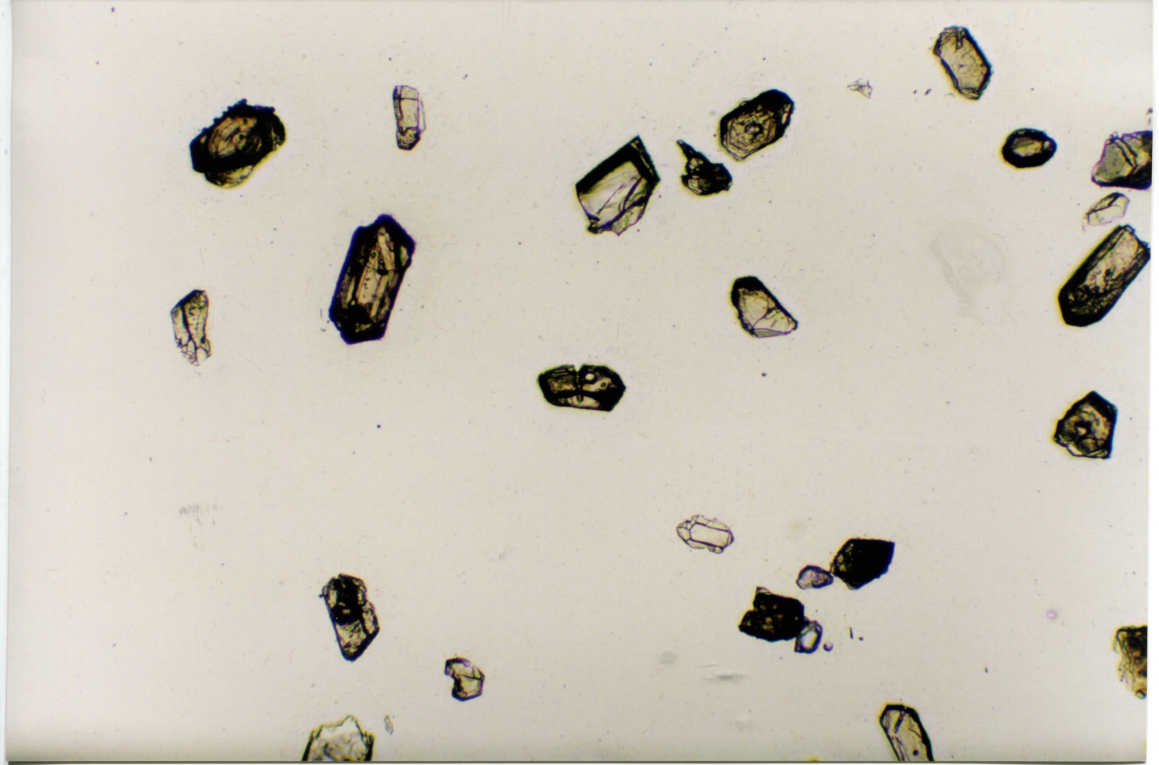
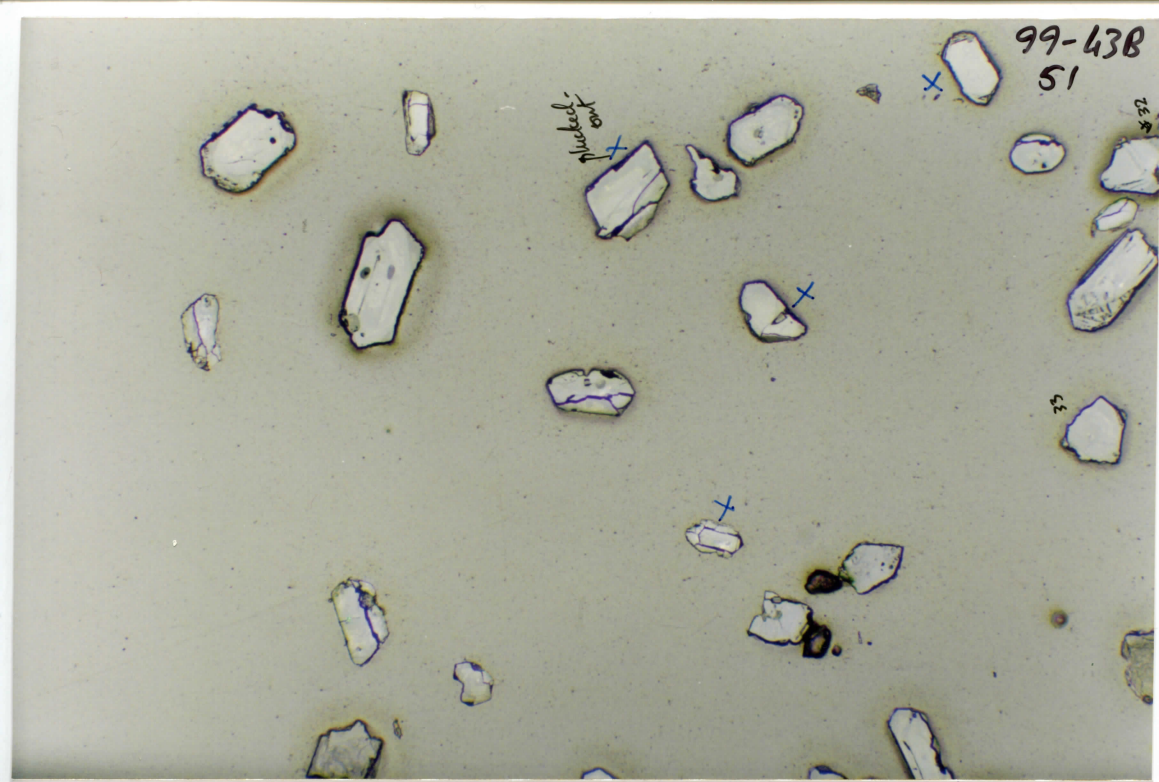


99-438
51

plucked
100

28

33



99-438

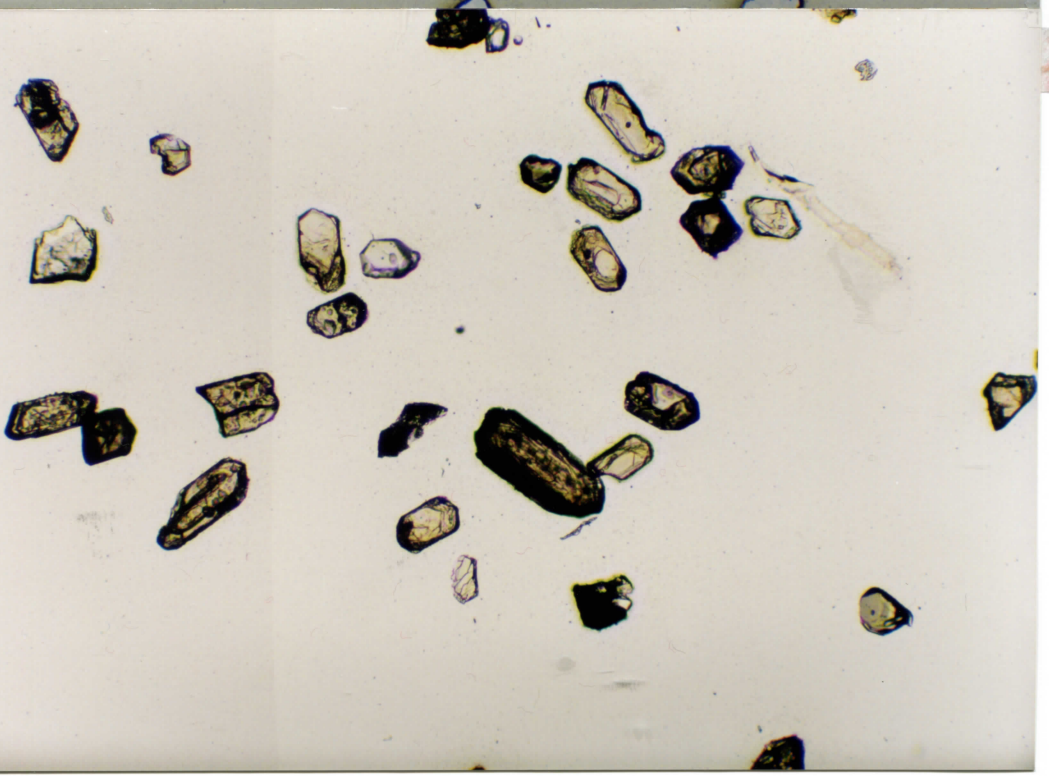
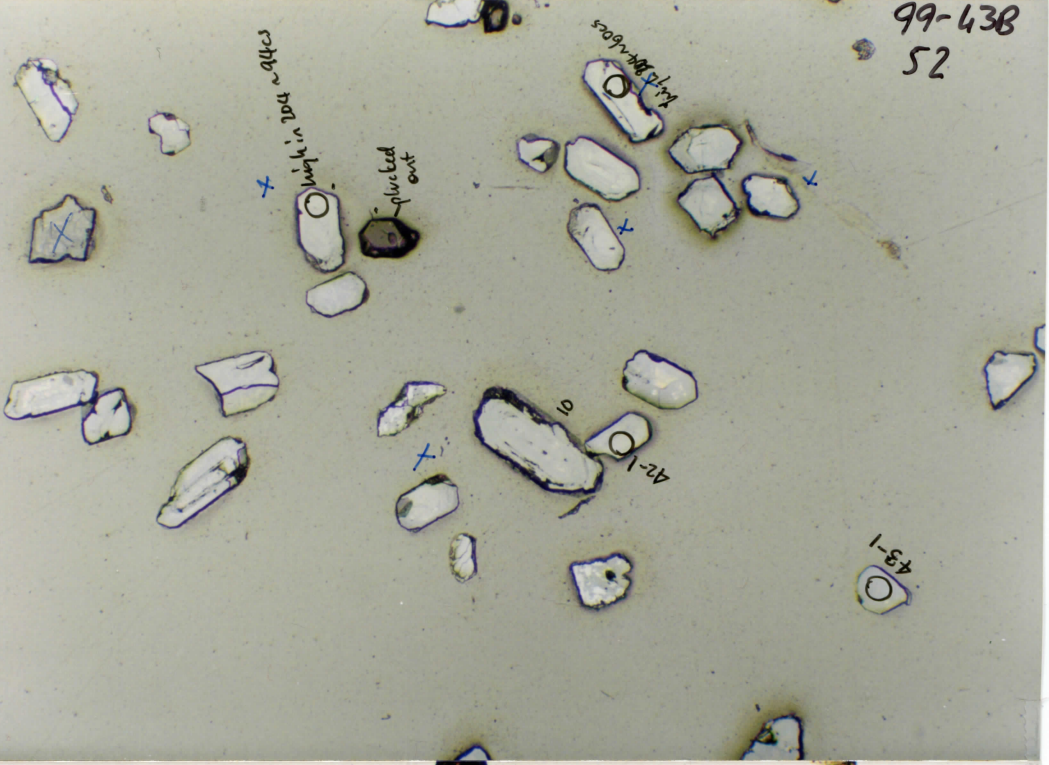
52

42-1

rather flat in top & sides

plucked out

43-1



99-43B
53

