

99-50
Pop A
sp 15

24-1

25-1

①

x

99-50
Pop A
SP 16

4-1

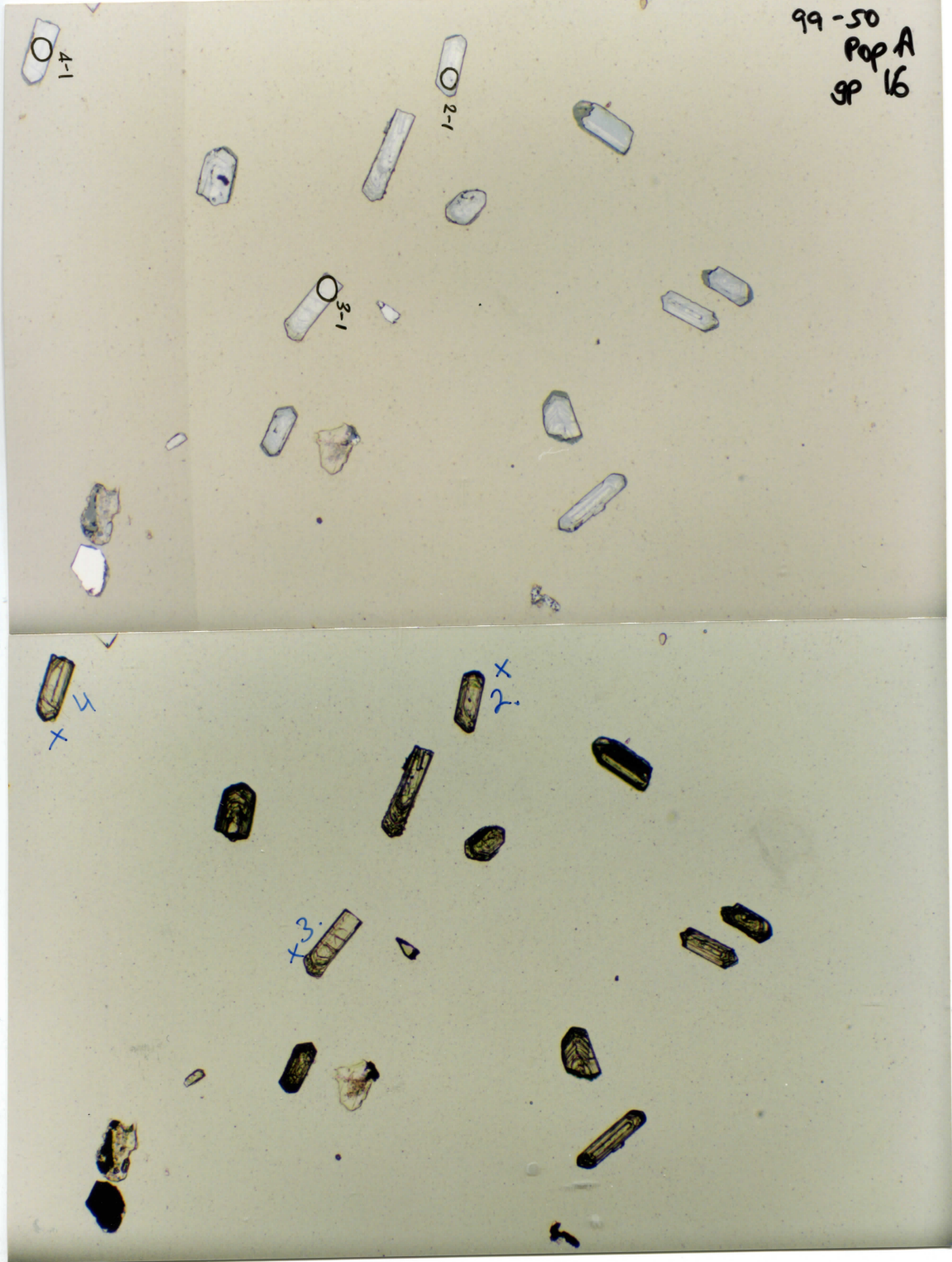
2-1

3-1

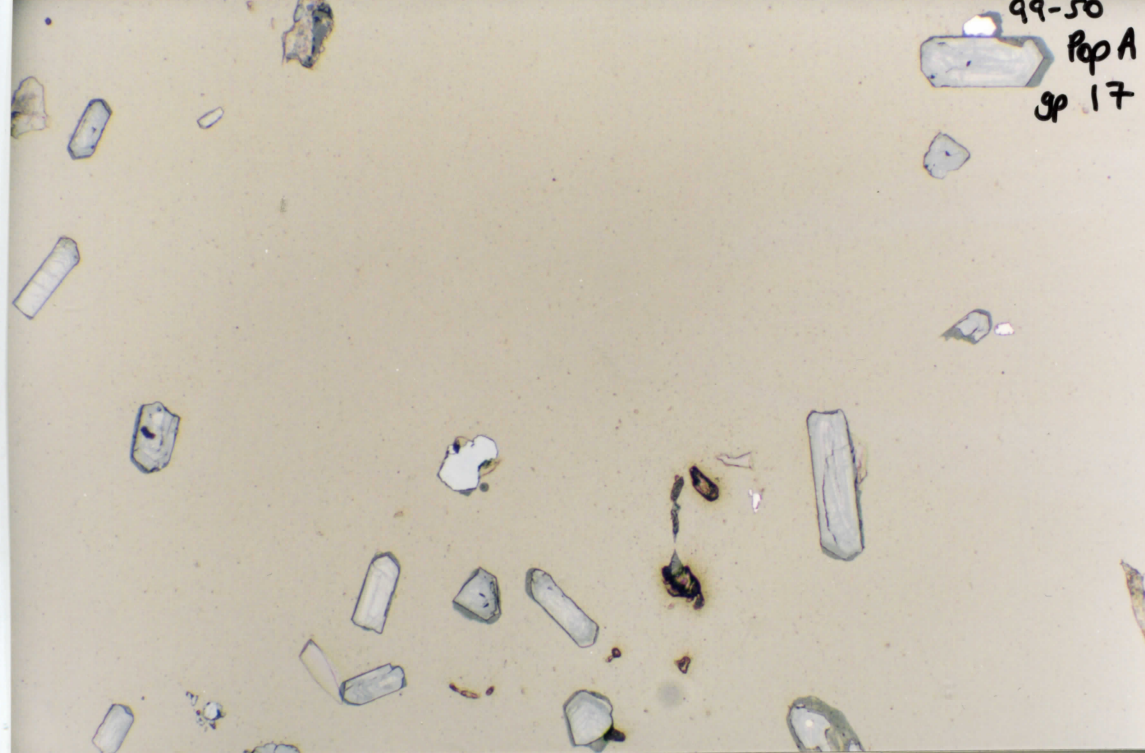
4
x

2
x

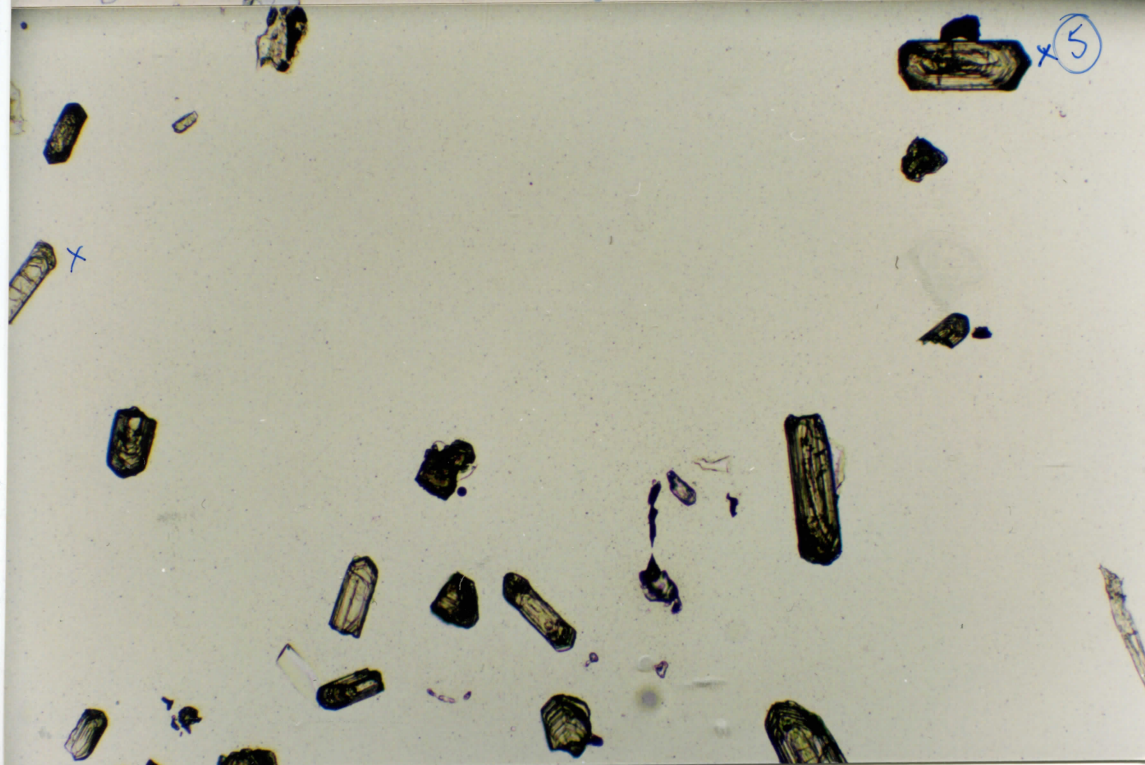
3
x



99-50
Pop A
sp 17



⑤



99-50
Pop A
SP 18

1-9

1-08

X

6 X

99-50
Pop A
SP 19

9-1

7-1

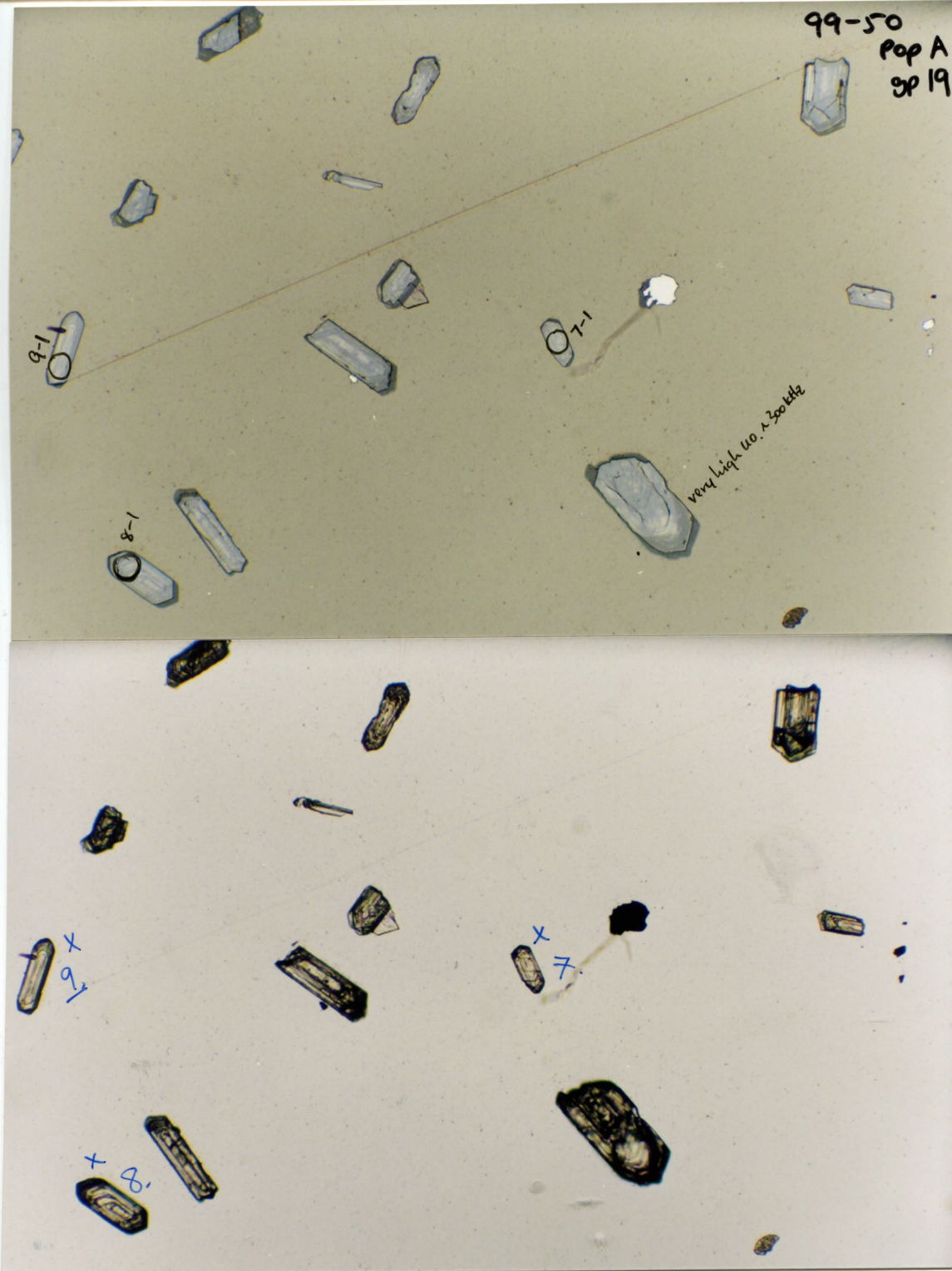
8-1

very high 400 x 300 kels

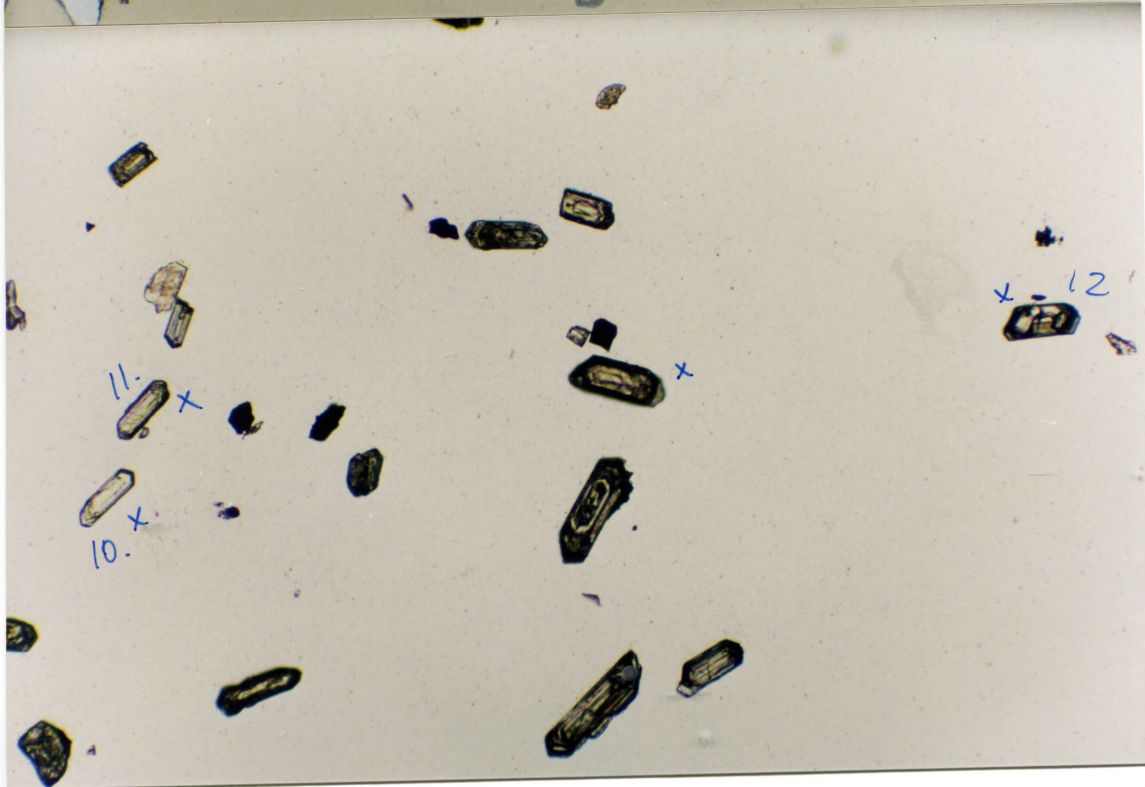
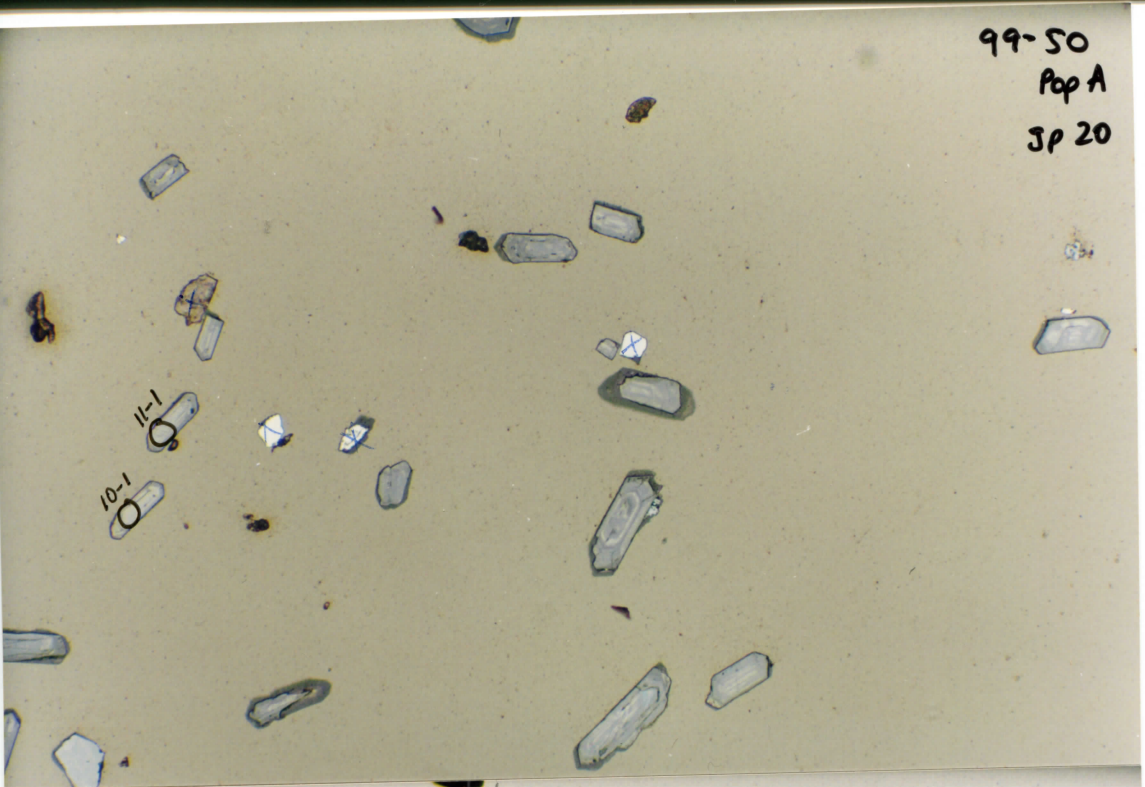
+ 9

+ 7

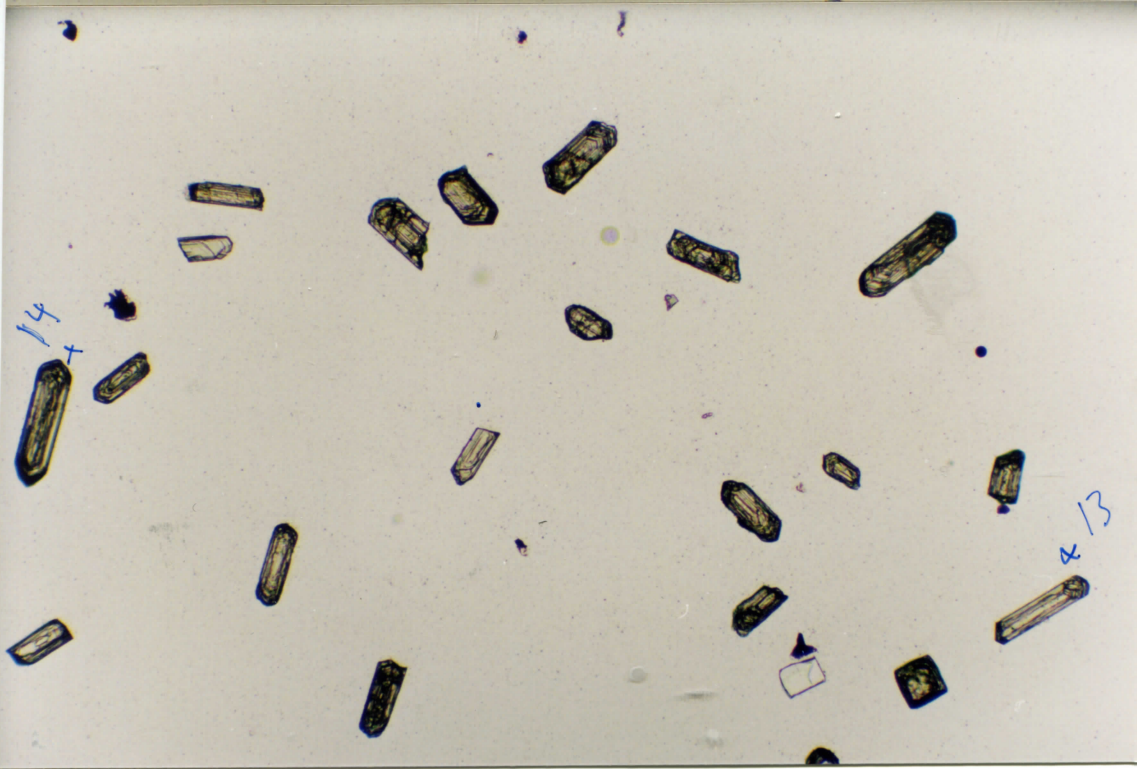
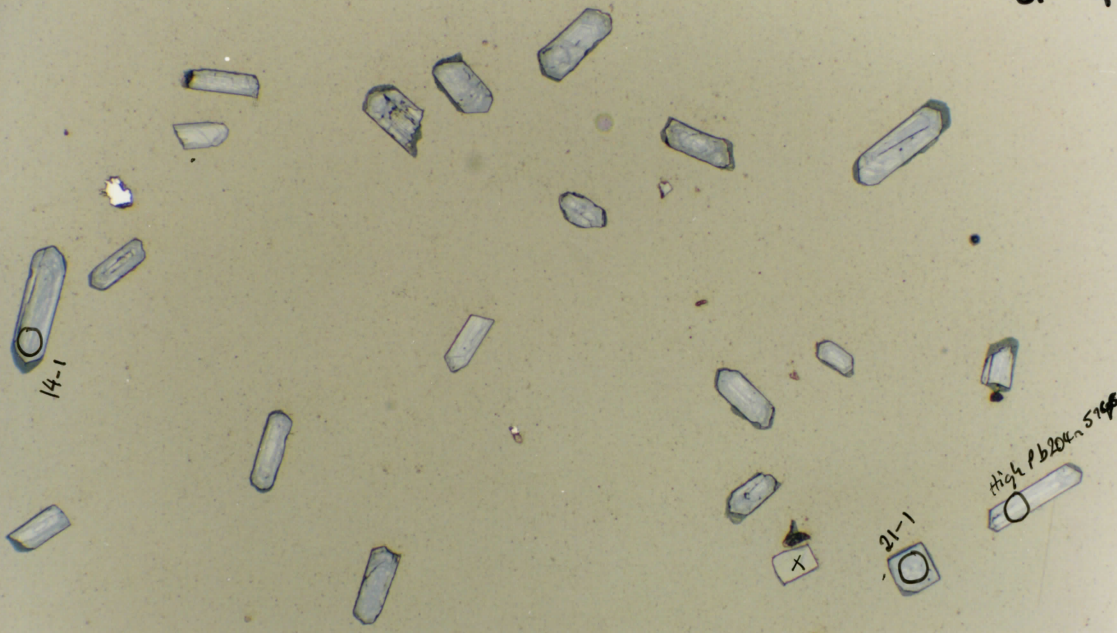
+ 8



99-50
Pop A
JP 20



99-50
Pop A
9P 21



99-50
Pop A
gp 22

16-1

16-1 High P2004
150x

22-1

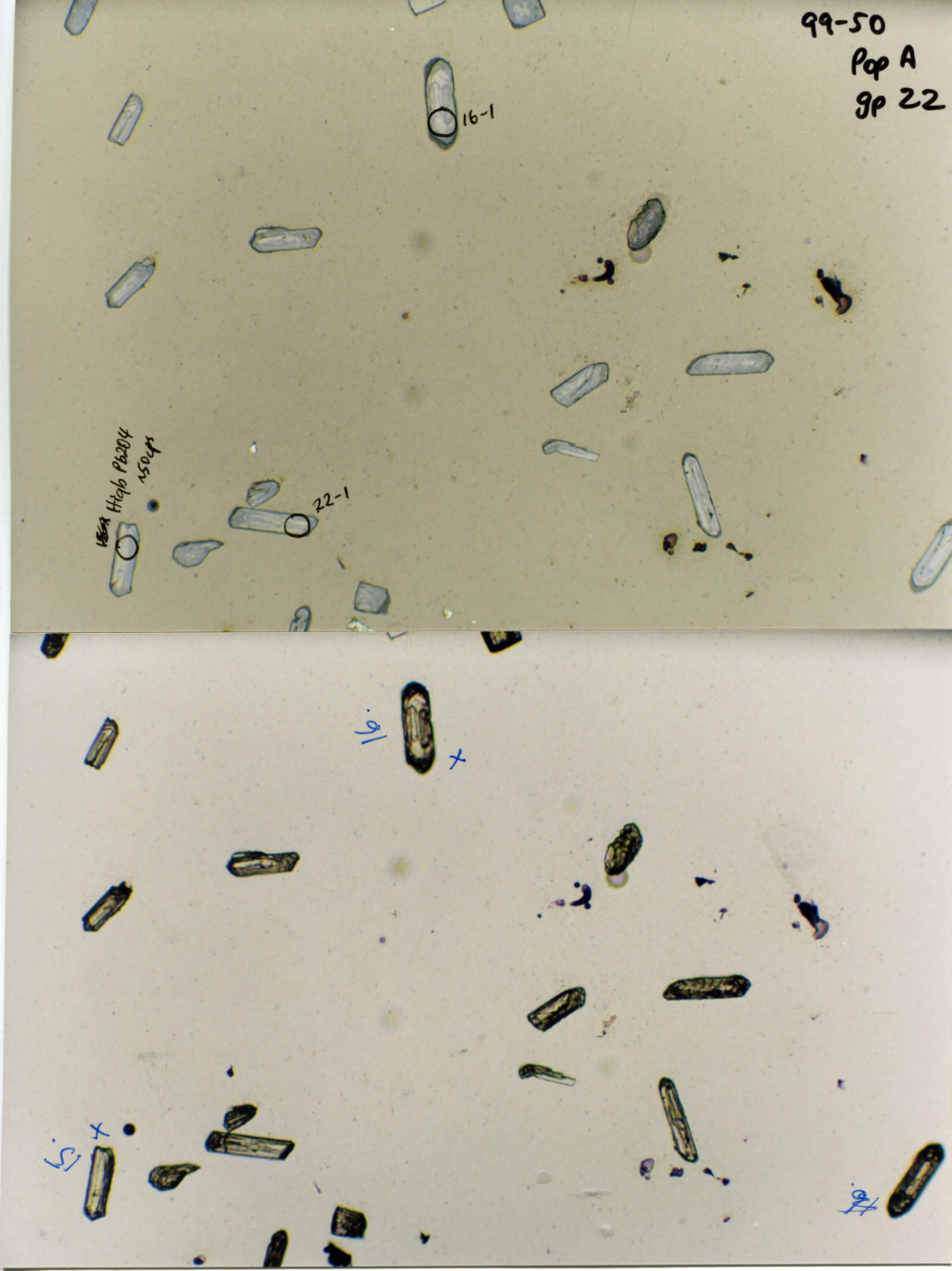
16

+

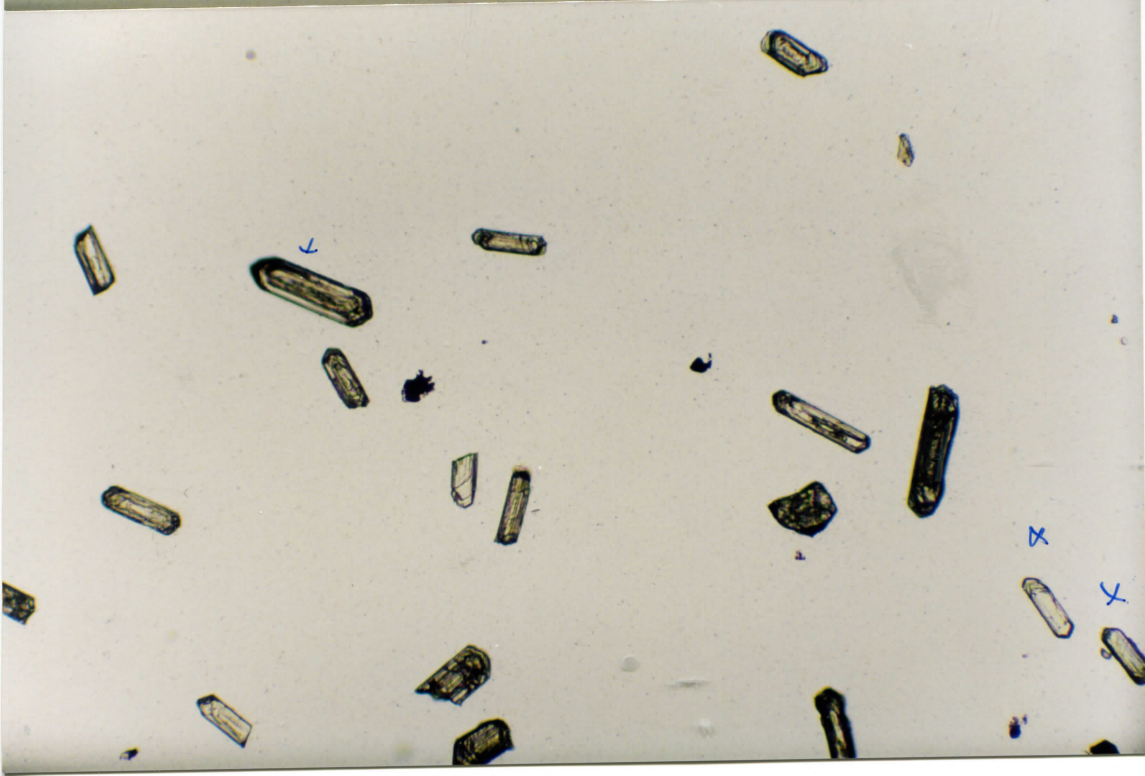
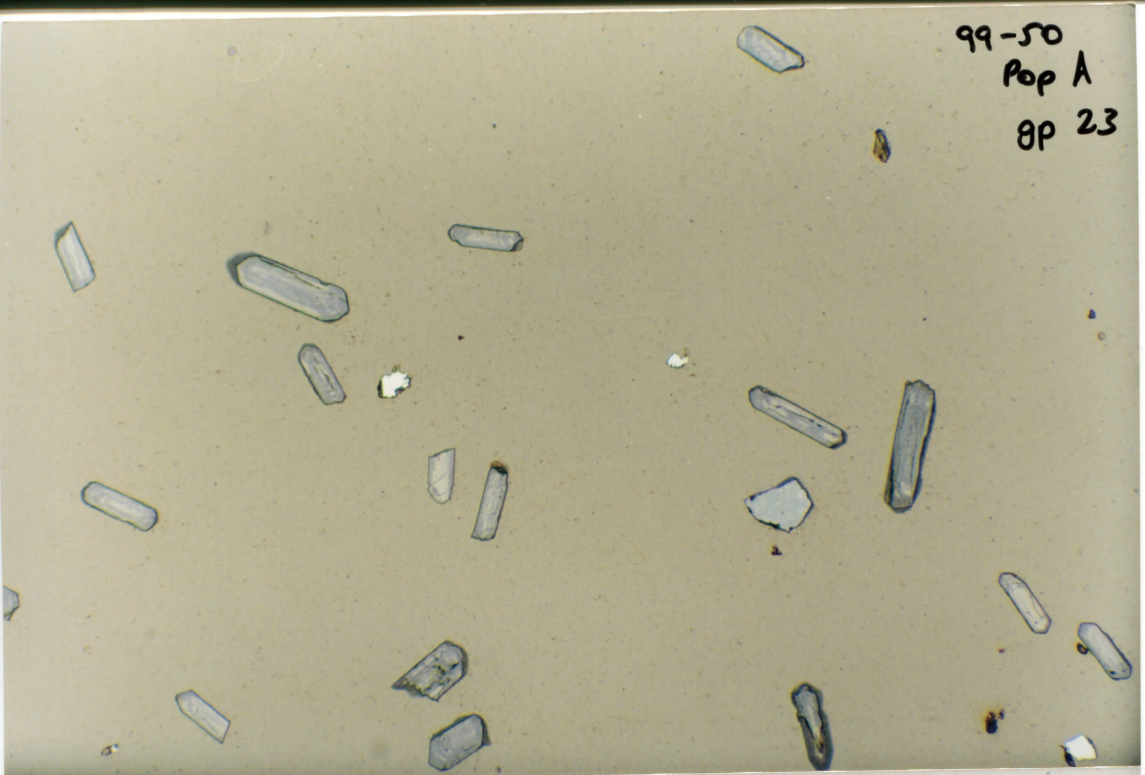
5

+

22



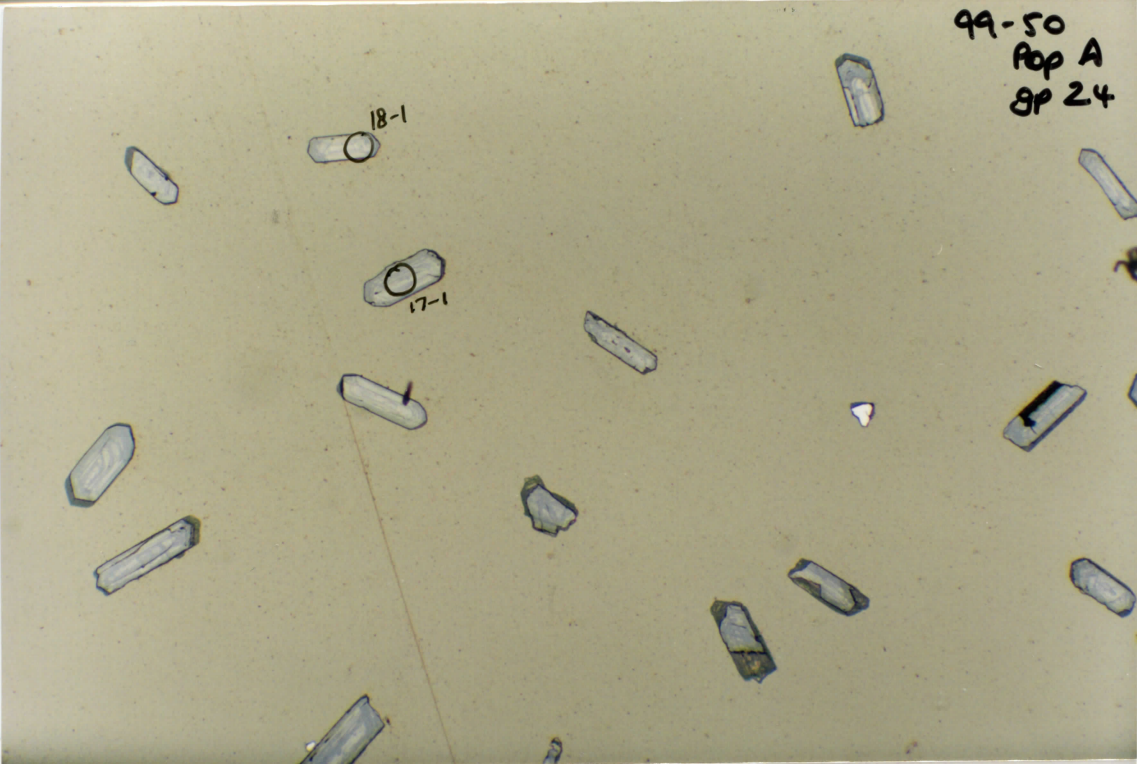
99-50
Pop A
8P 23



99-50
Pop A
gp 24

18-1

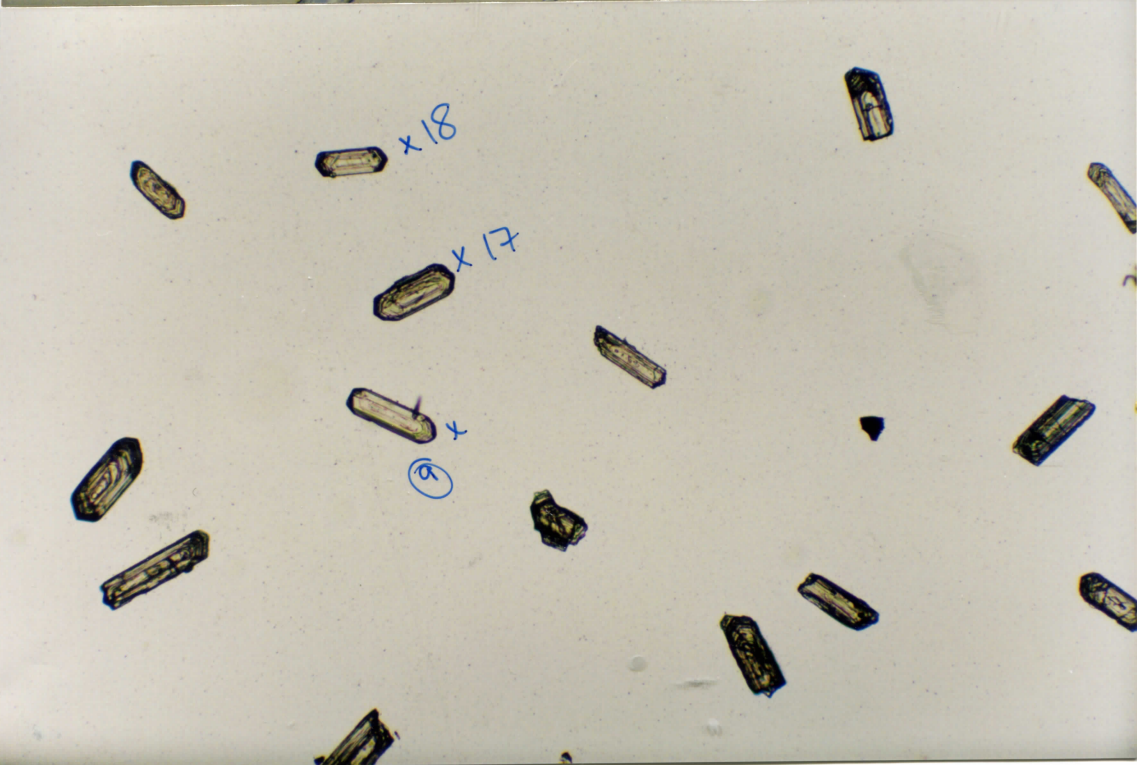
17-1



x18

x17

9



99-50
Pop A
SP 25

