

UWA99-58

A

SP 44

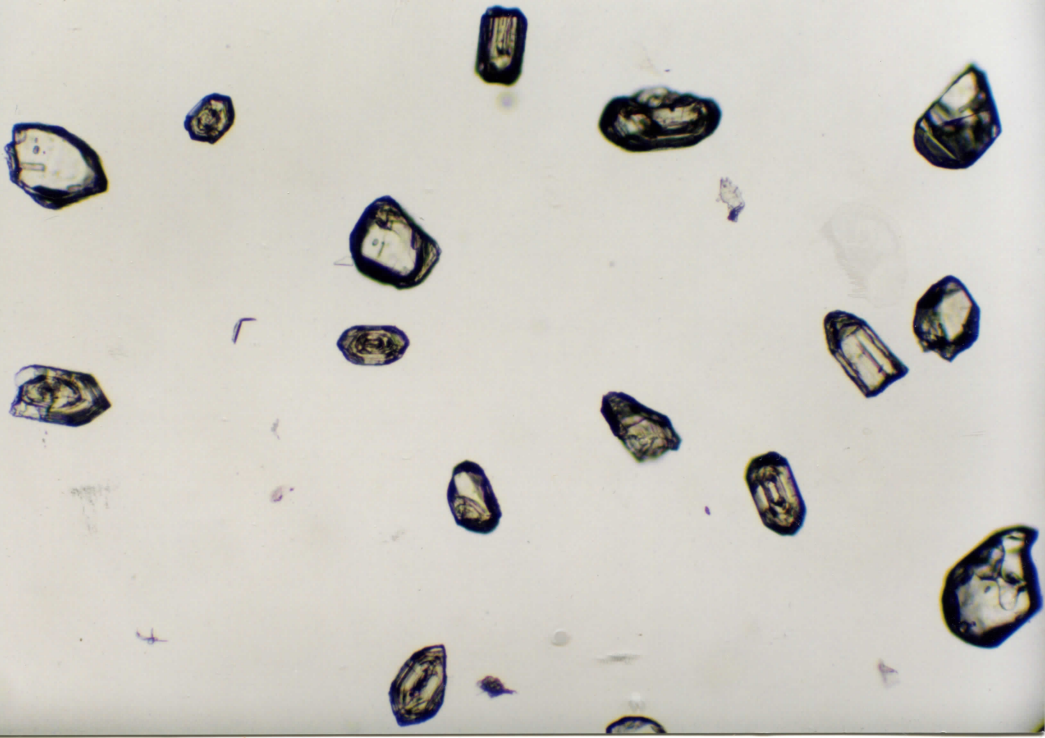
16-1

15-1

17-1

14-1

18-1



UWA 99-58

R

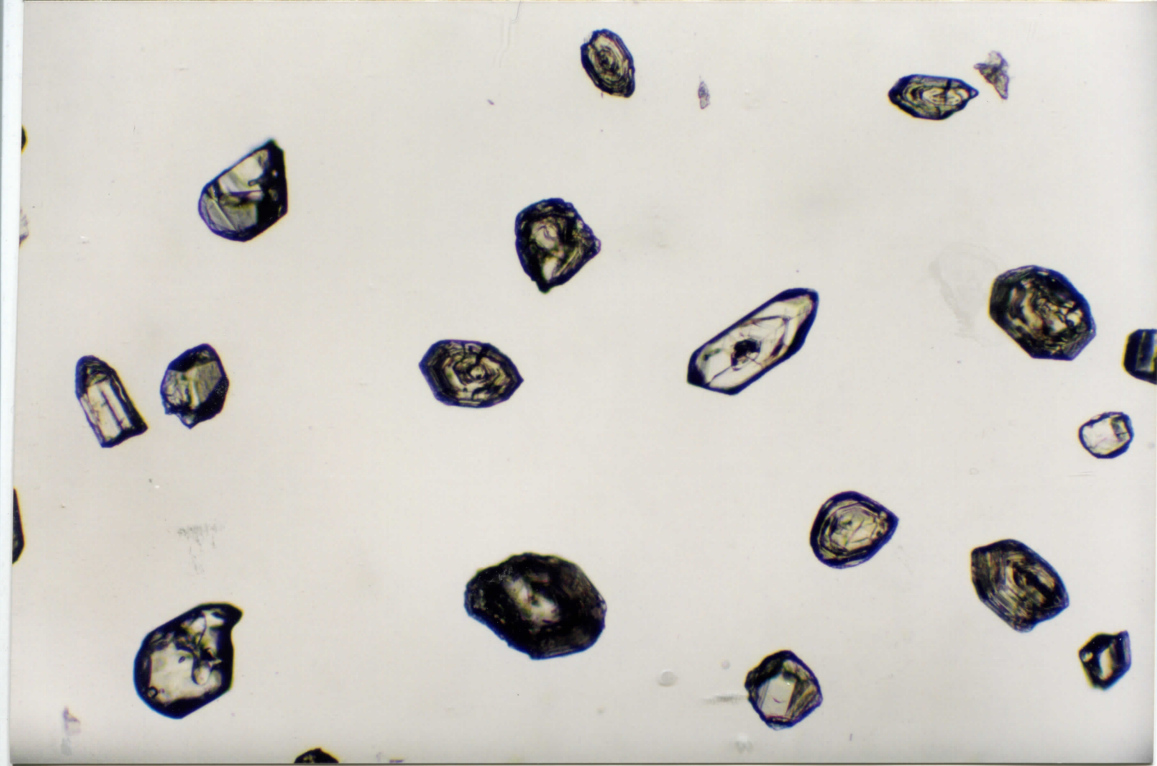
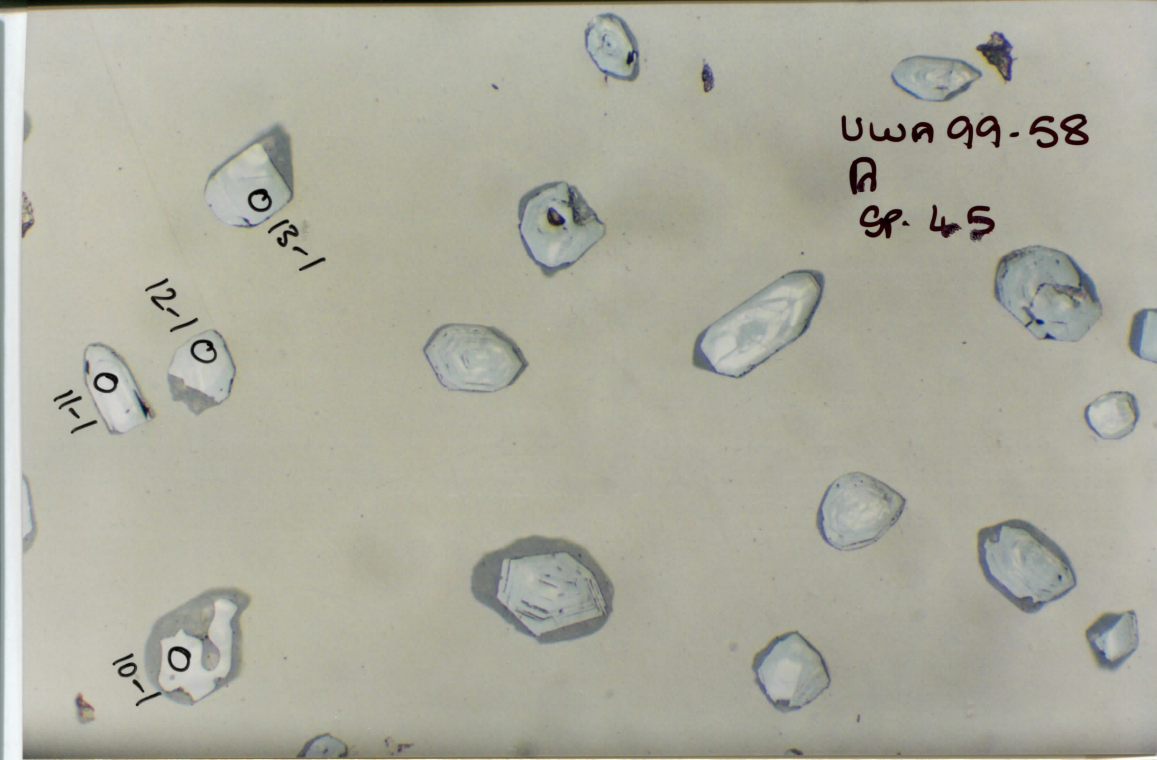
sp. 45

013-1

12-10

11-10

10-10



UWA 99-58
A gr. 46
3-1 2-10

6-1

7-1

4-1

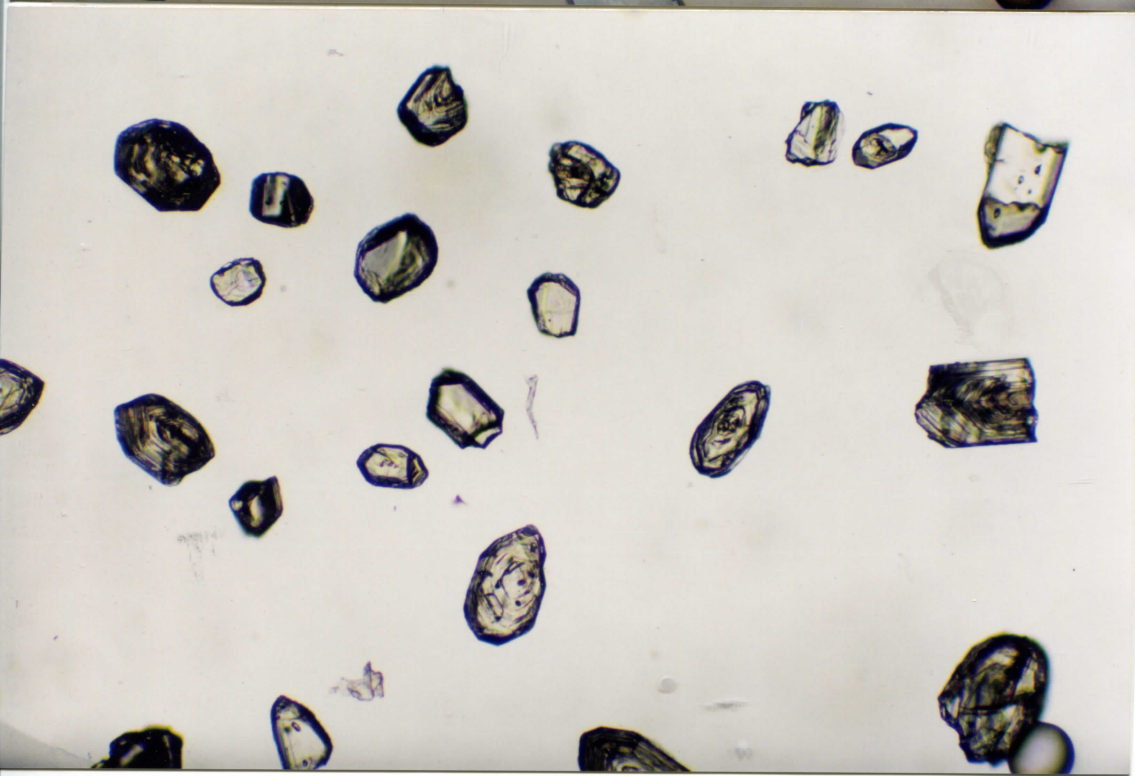
5-1

8-1

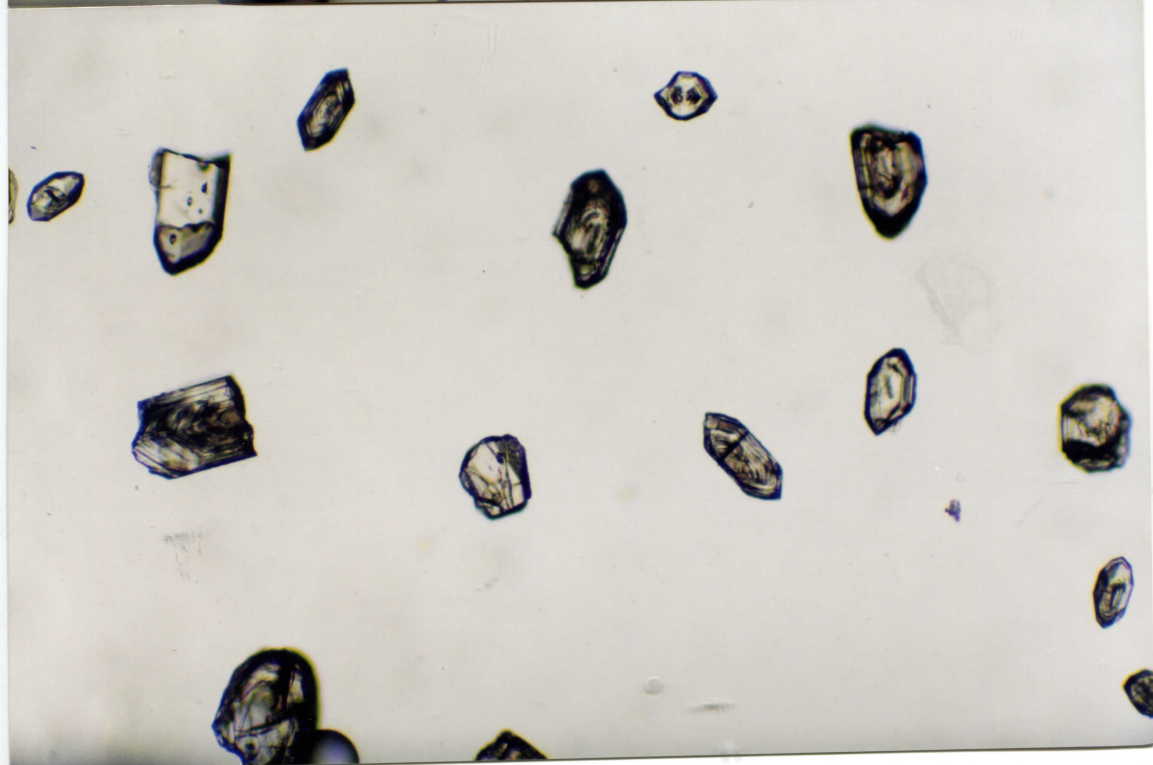
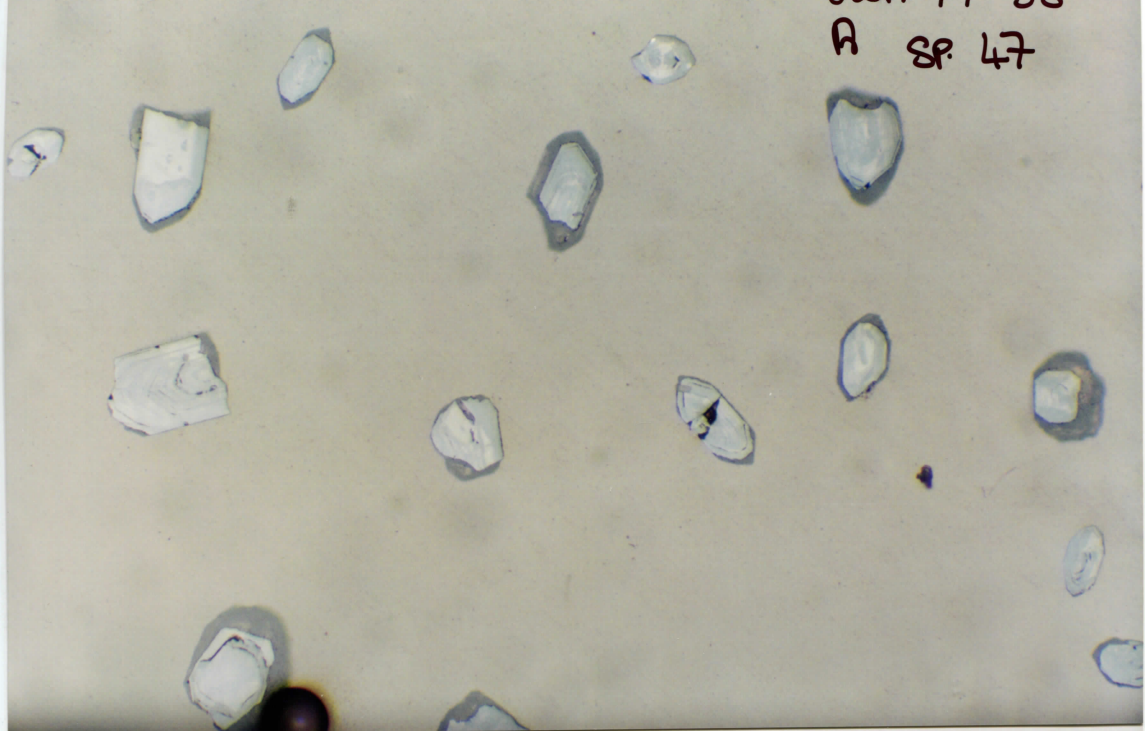
9-1

24th Aug 2014

⊗

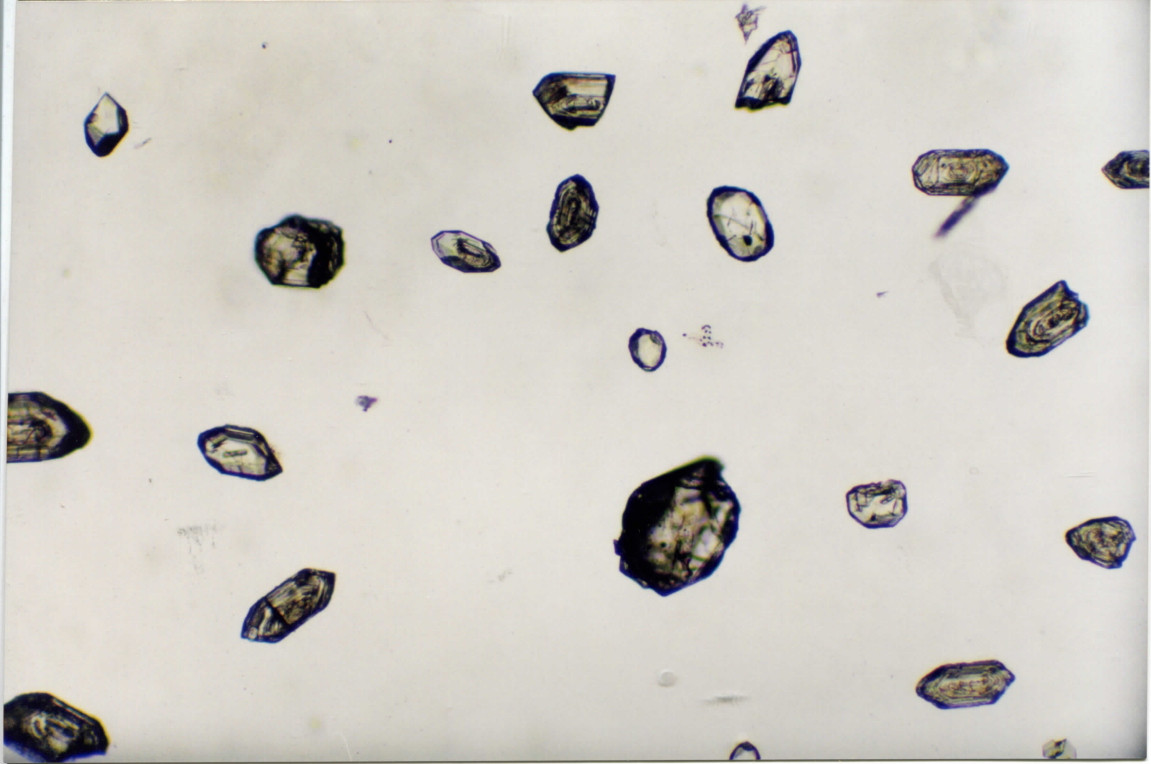
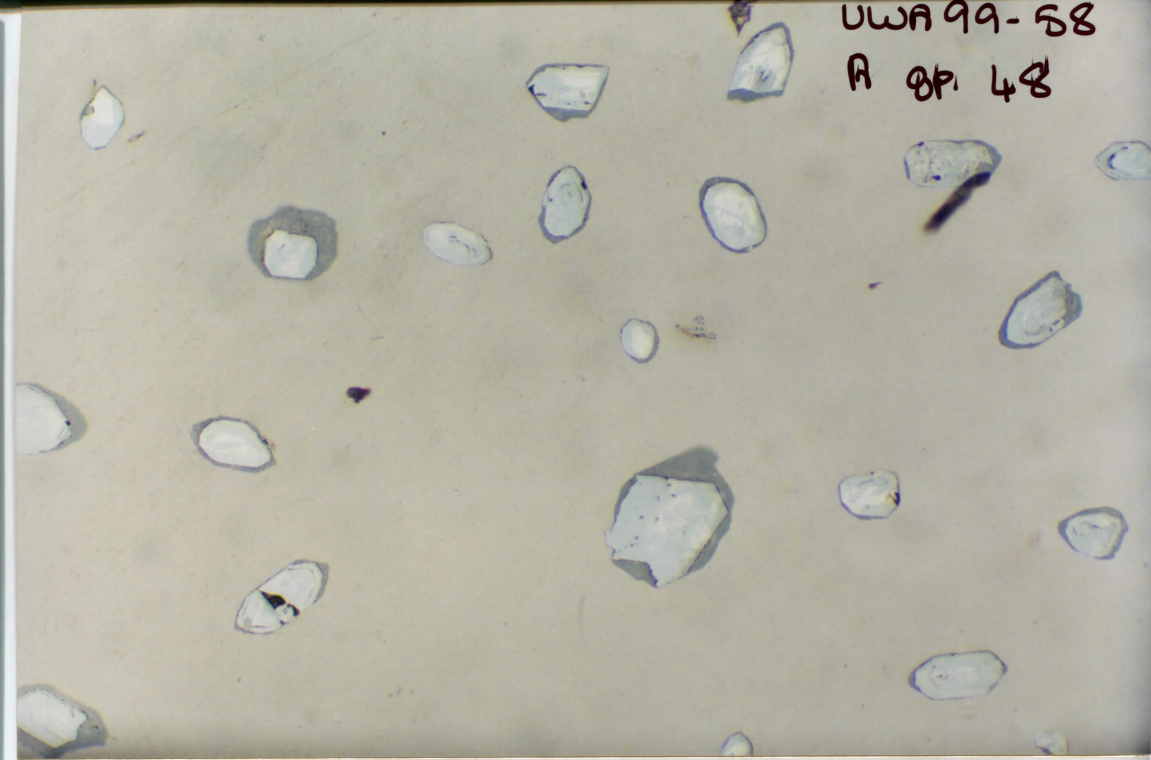


UWA 99-58
A SP 47



UWA 99-58

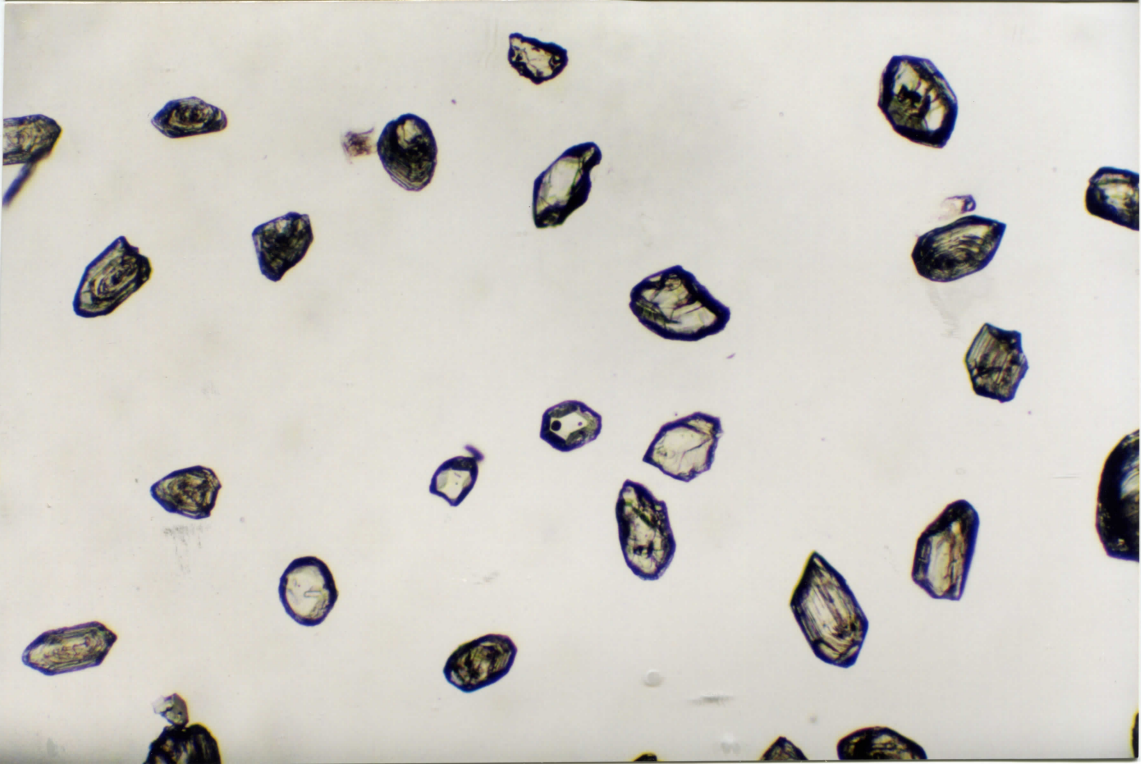
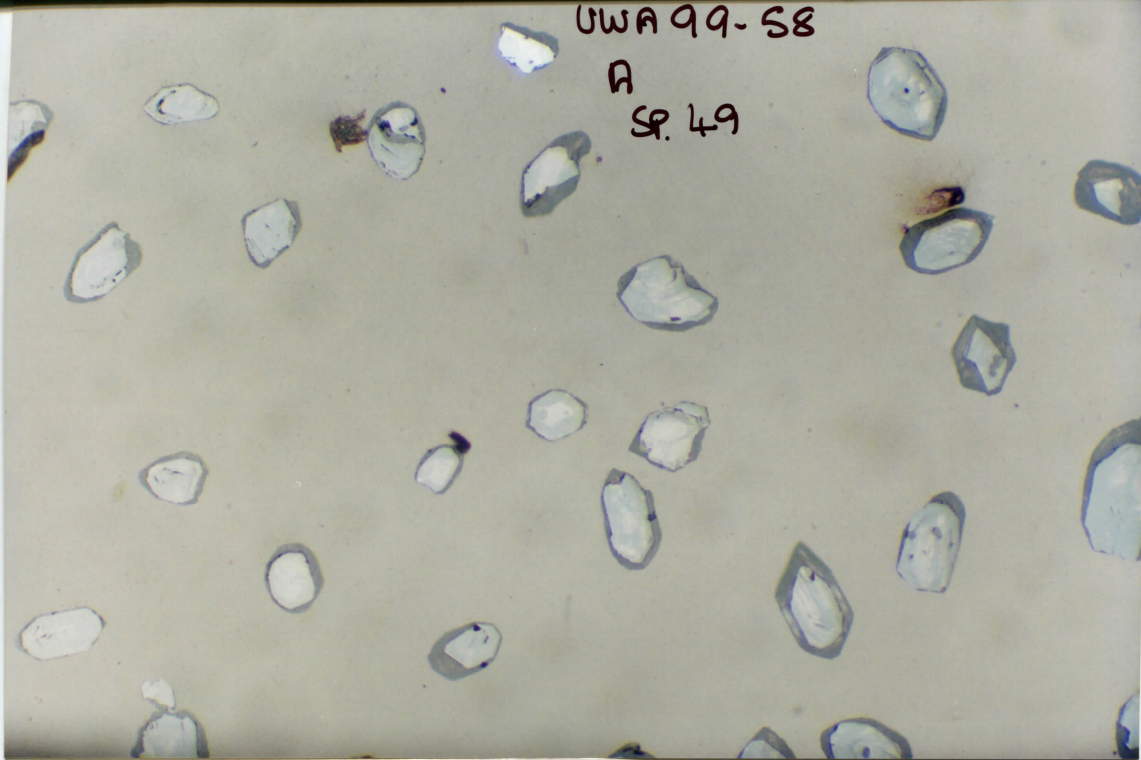
A Sp. 48



UWA 99-58

A

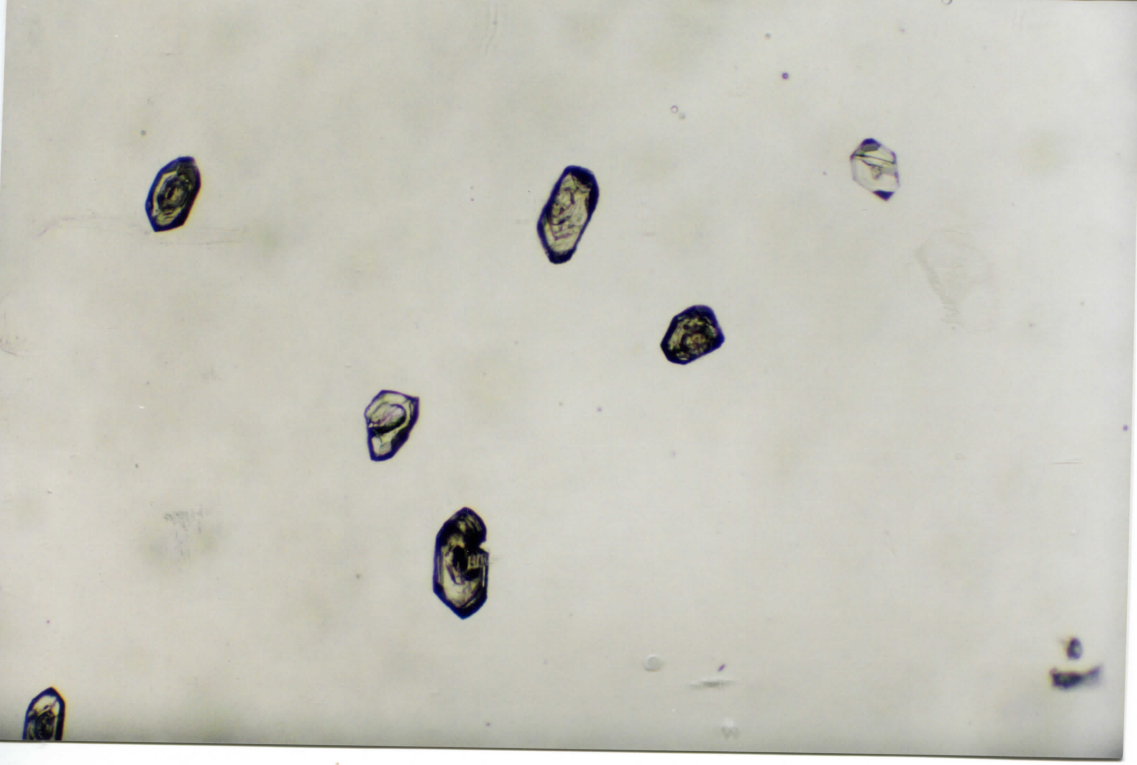
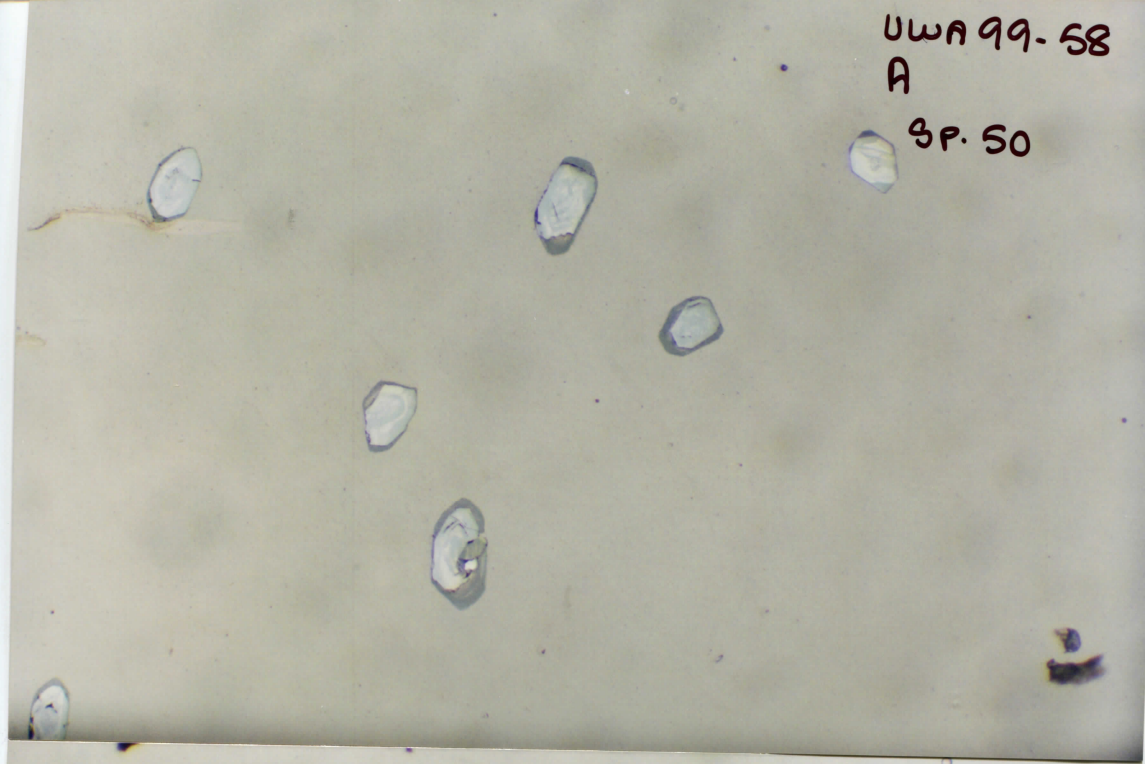
SP. 49



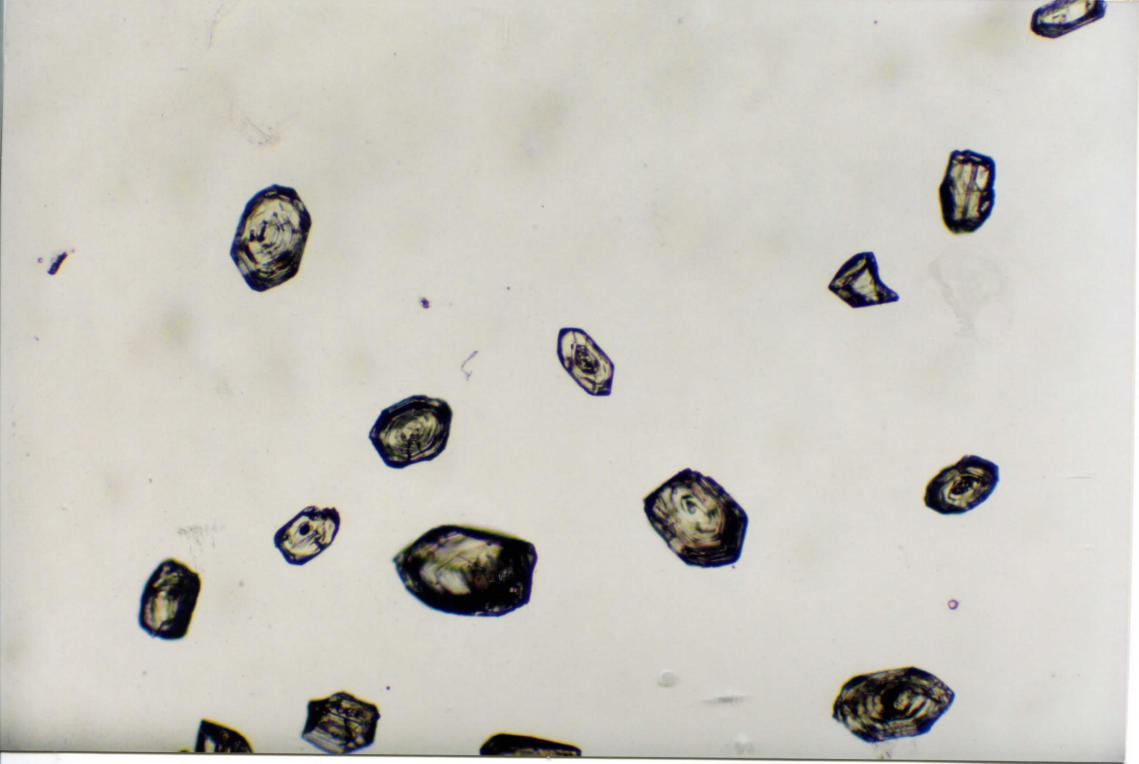
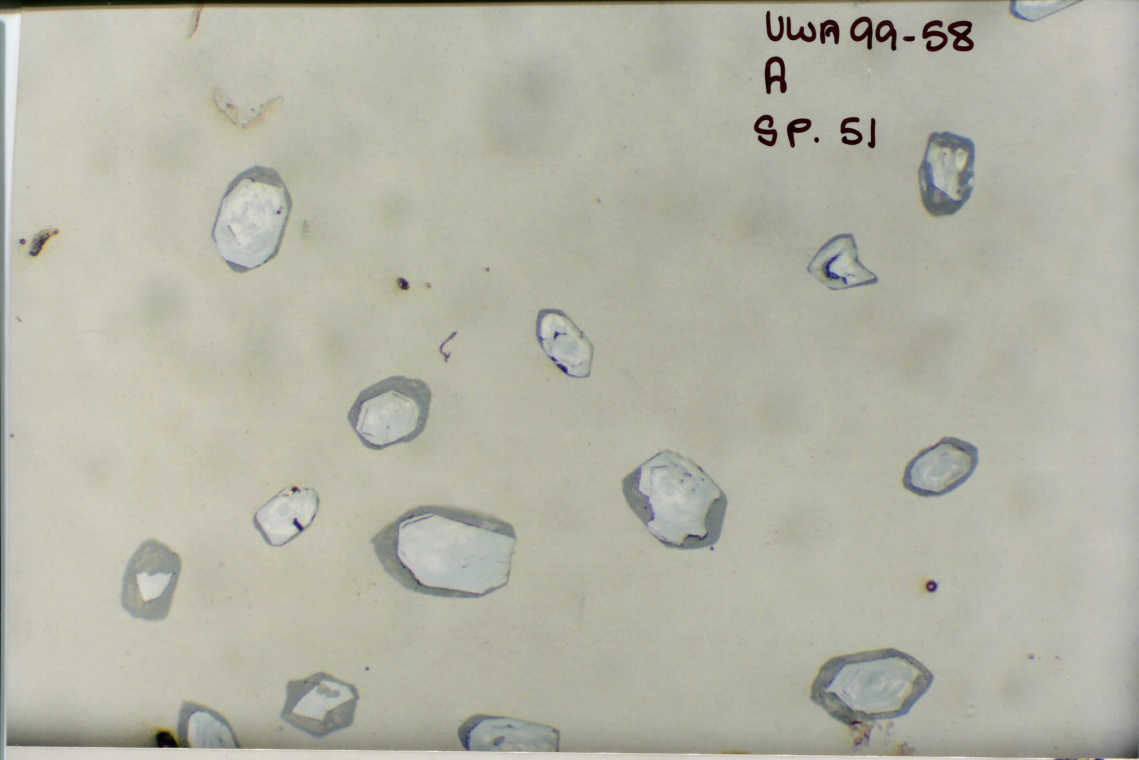
UWA 99-58

A

SP. 50



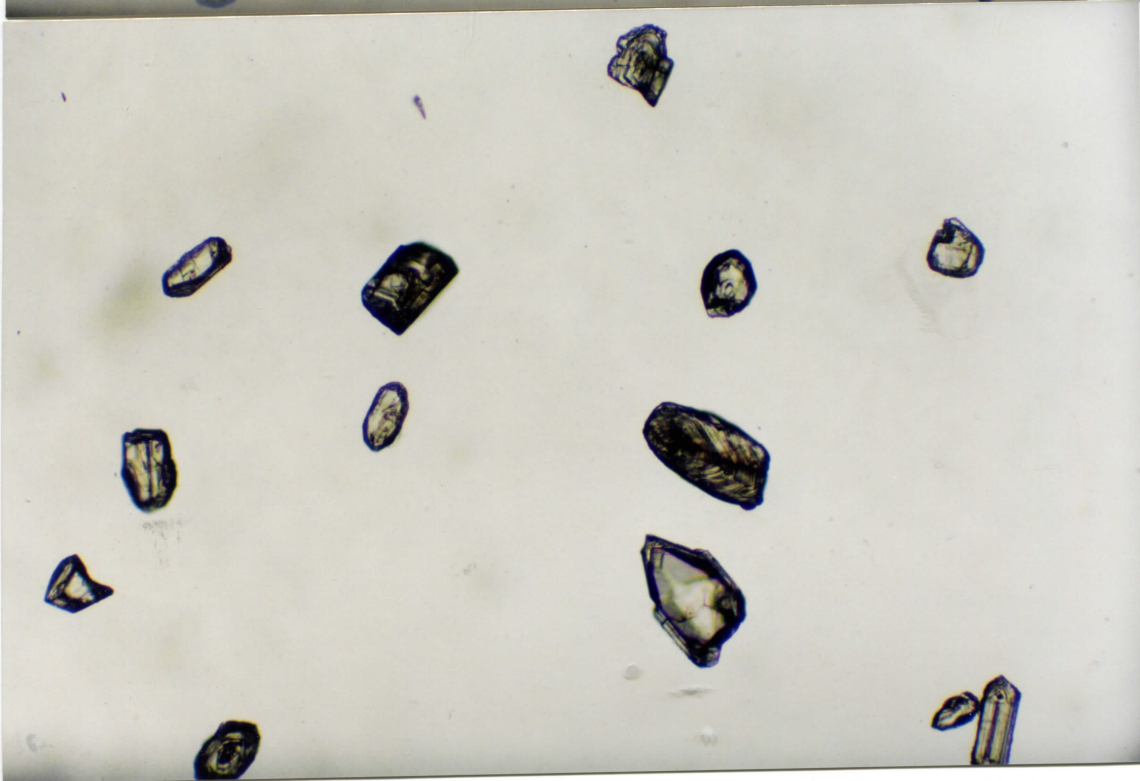
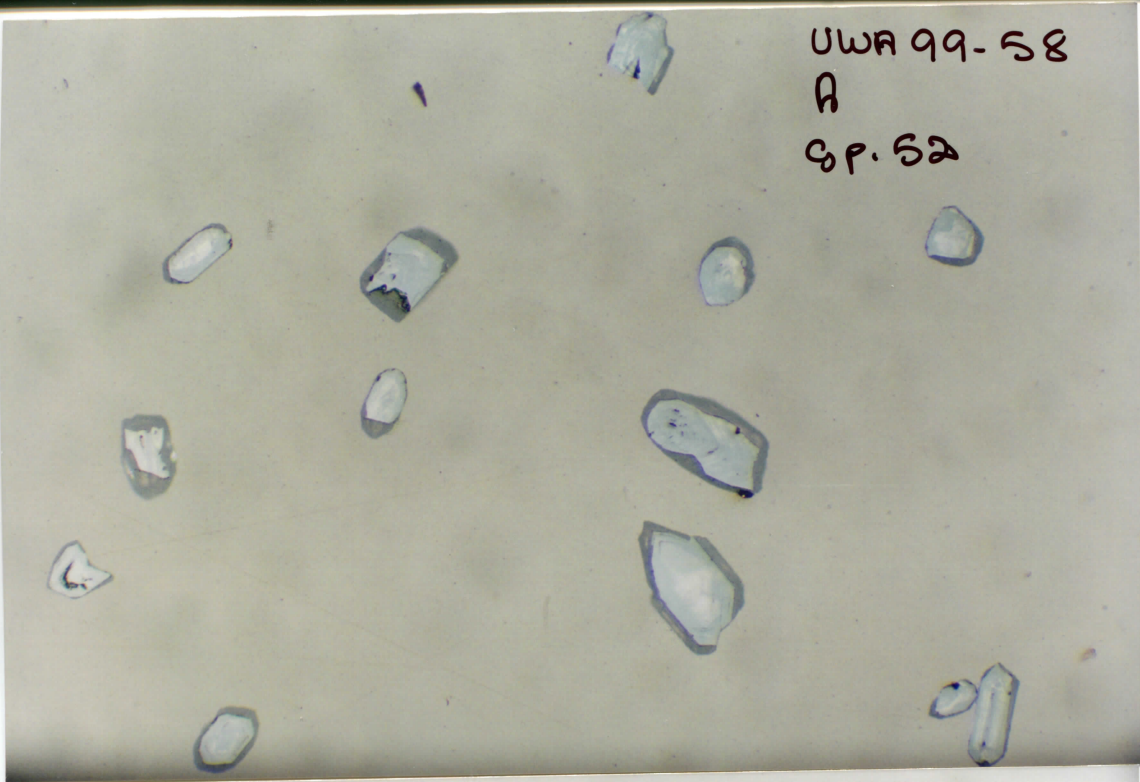
UWA 99-58
A
SP. 51



UWA 99-58

A

Sp. 52



DWA 99-58

A

SP. 53

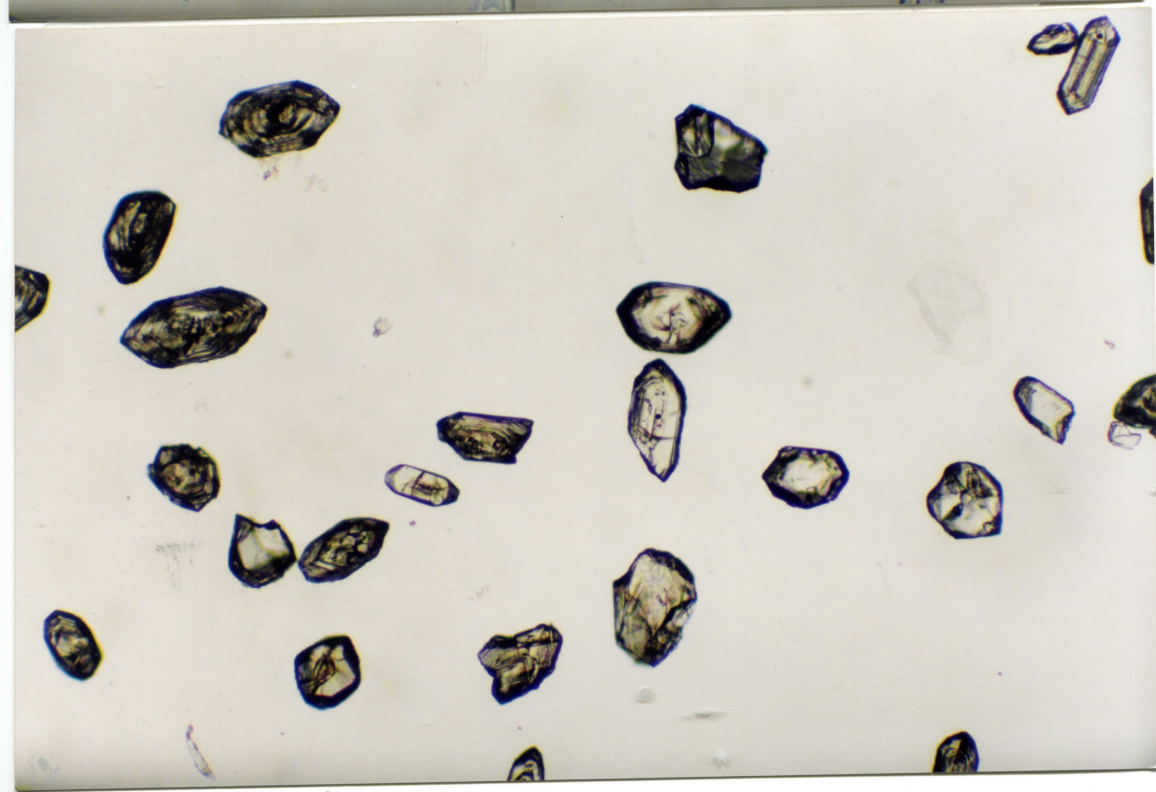
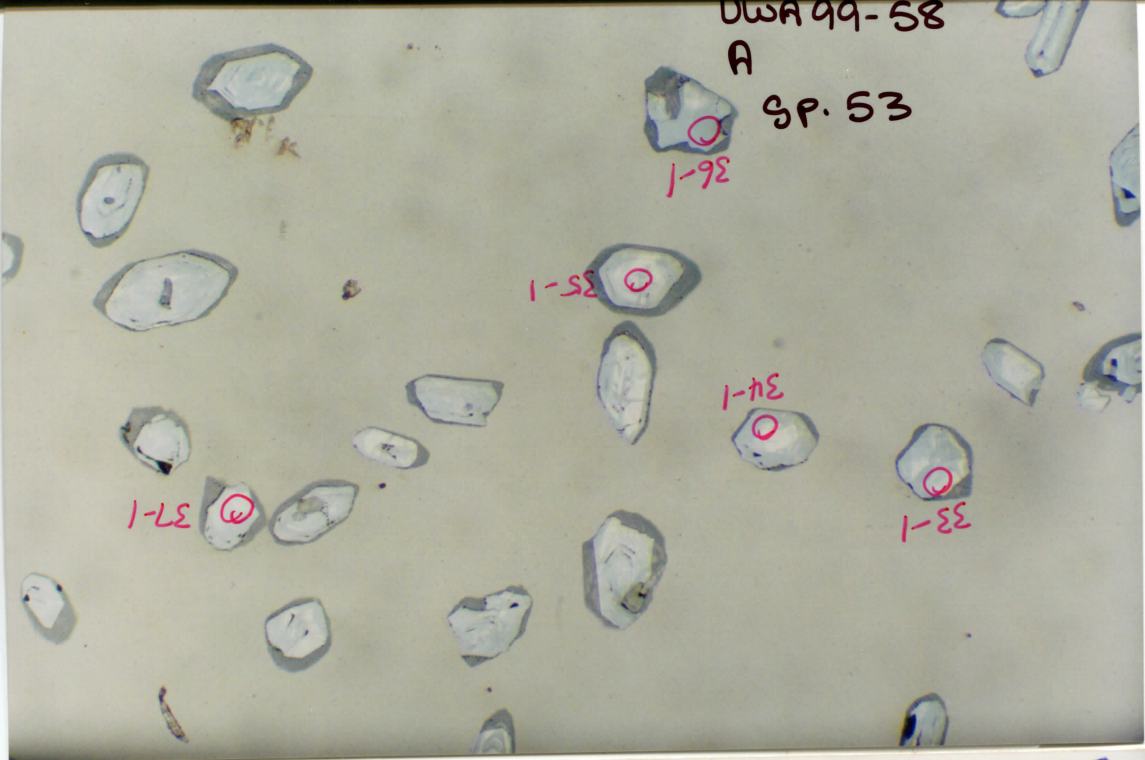
1-98

1-58

1-78

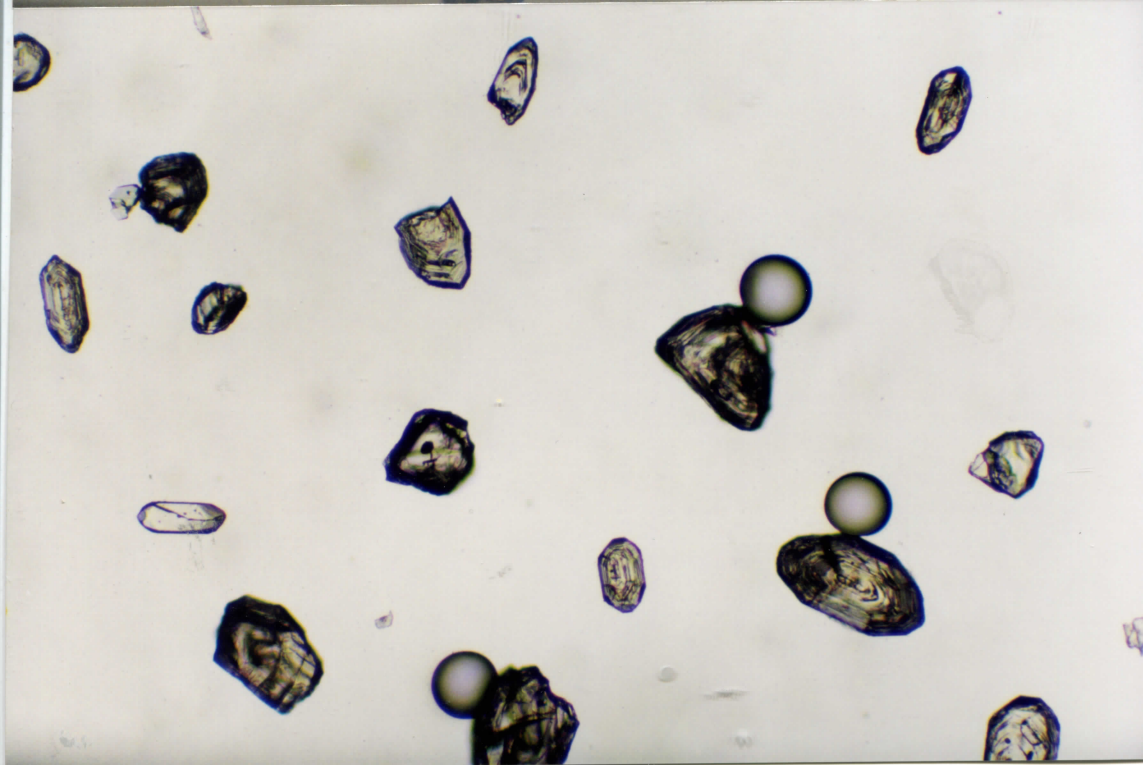
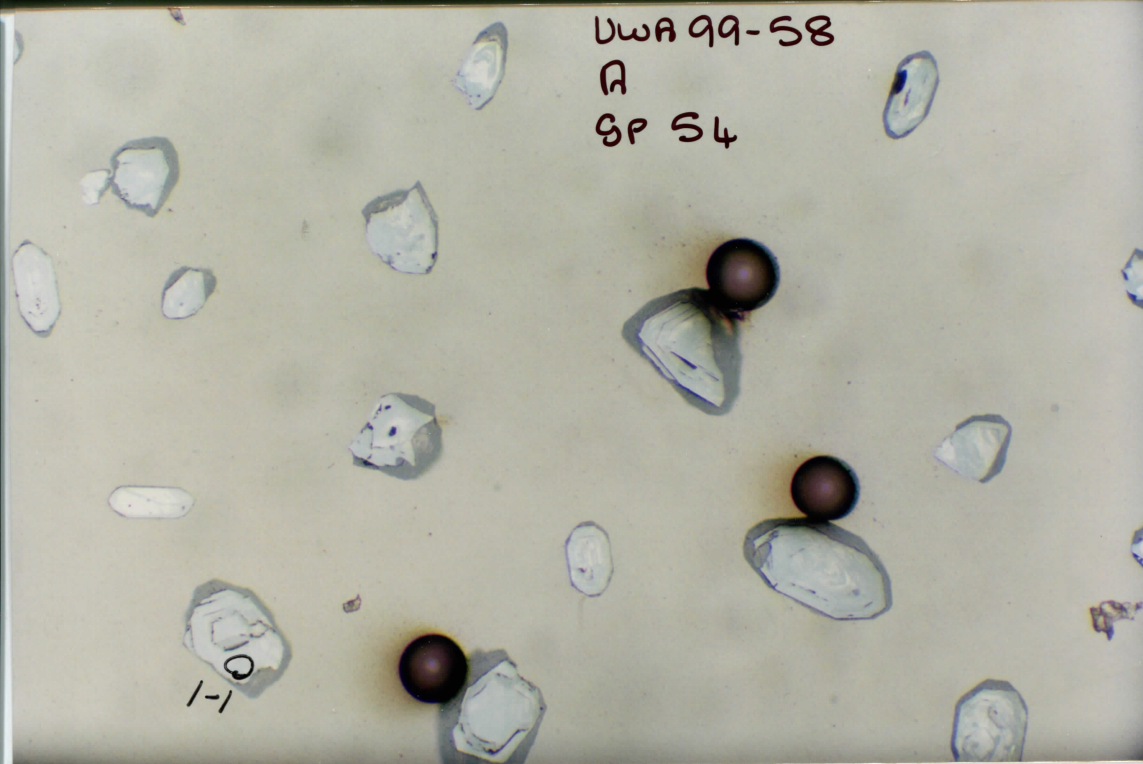
1-33

1-37



DWA 99-58
A
SP 54

1-1



UWA 99-58

A 8P.55

1-02

1-12

1-11

2-11

Very low u.

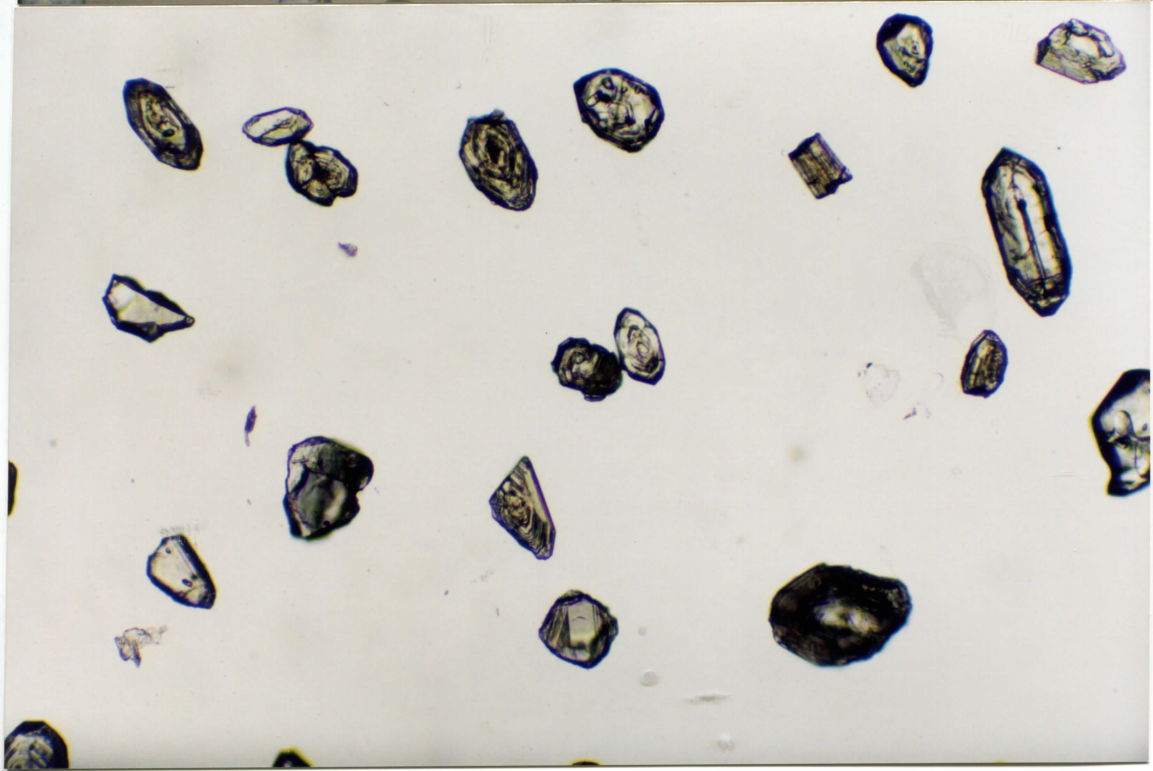
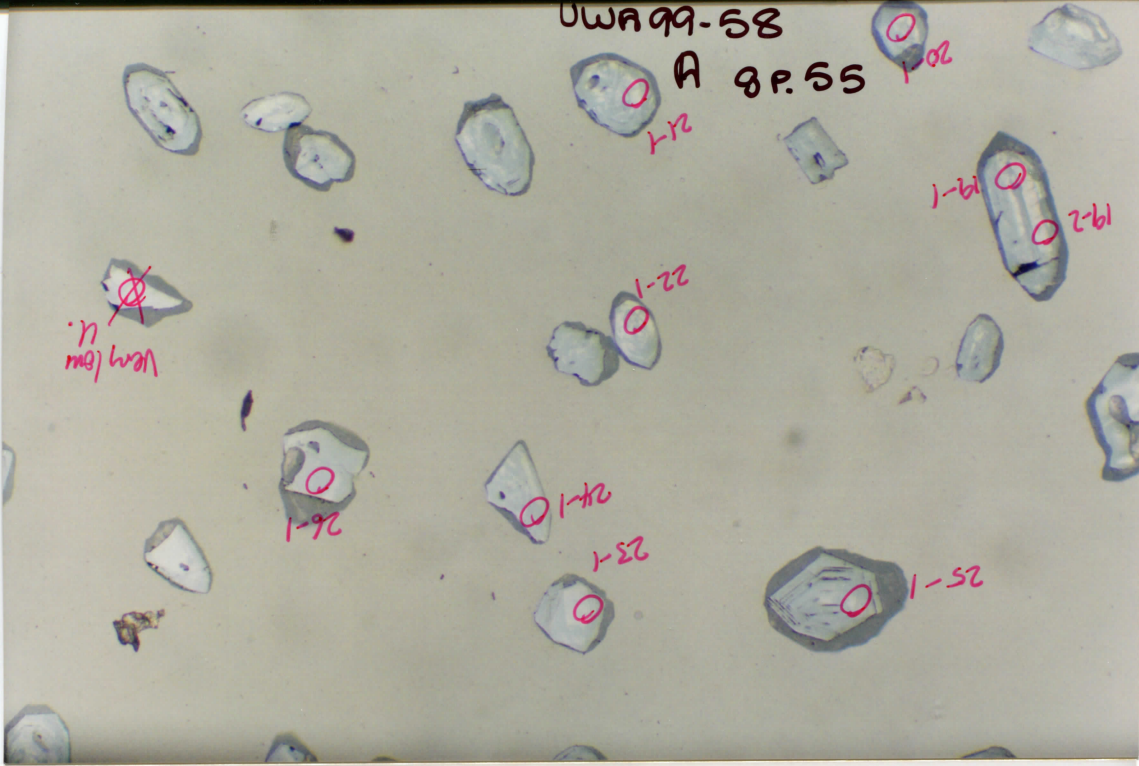
22-1

26-1

24-1

23-1

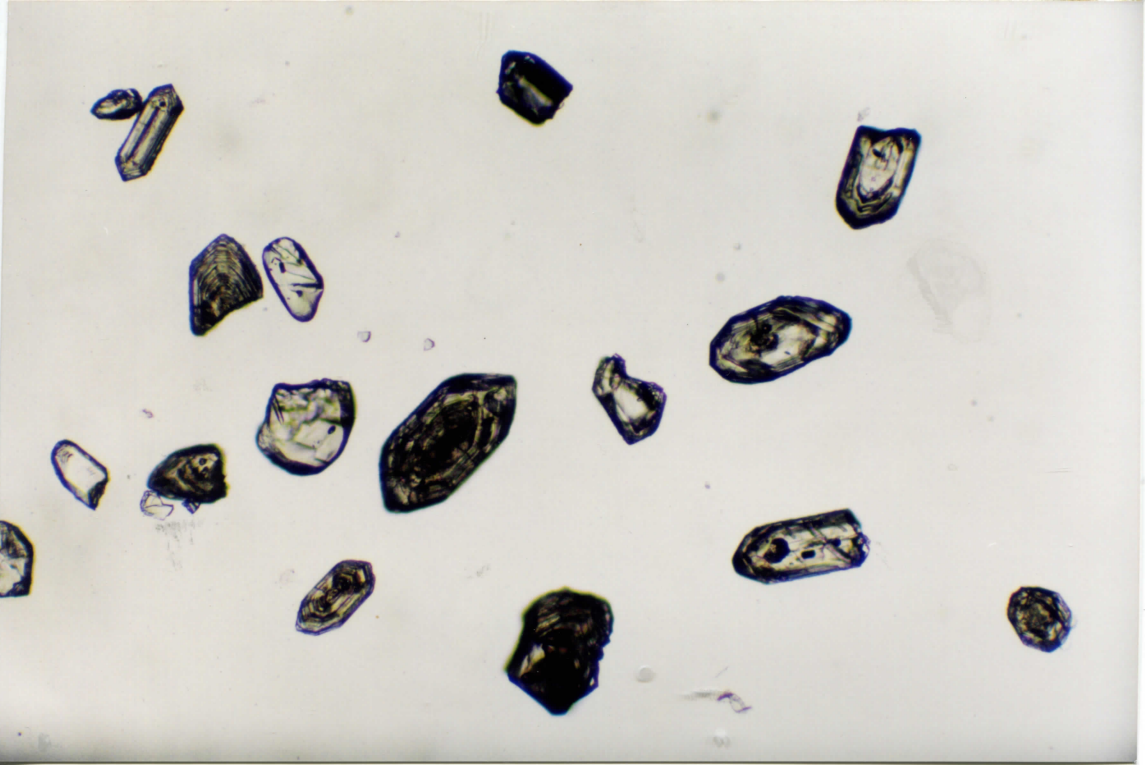
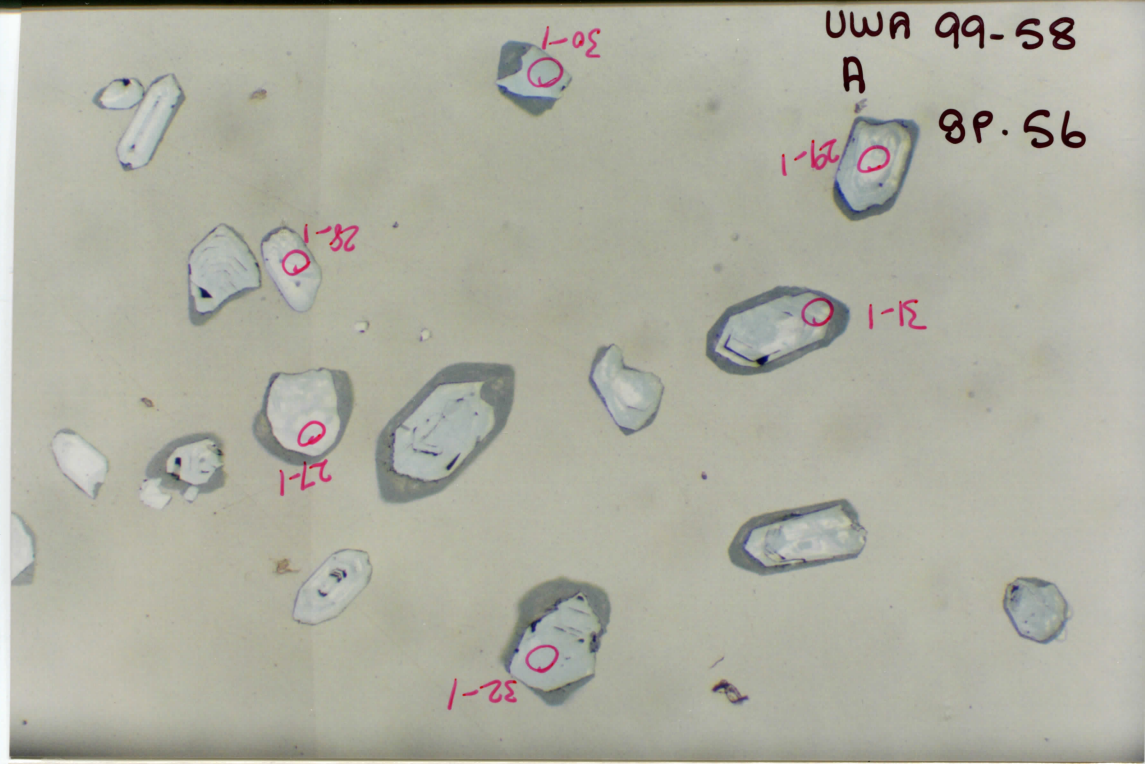
25-1



UWA 99-58

A

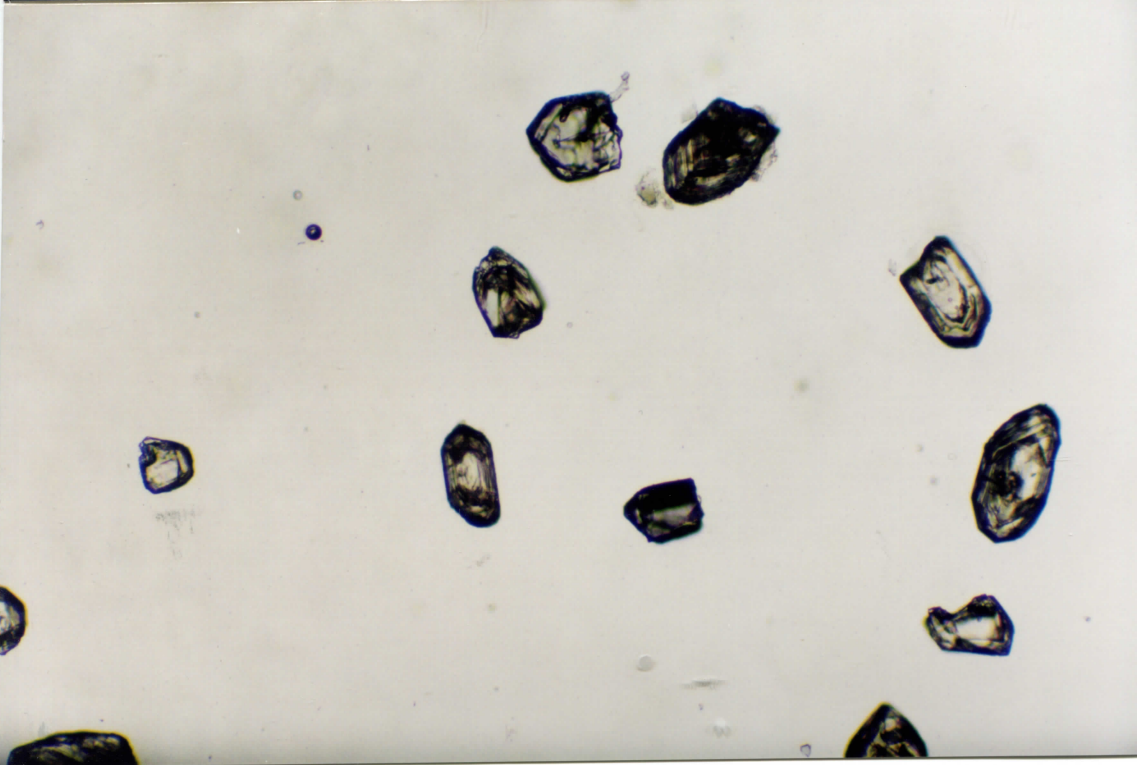
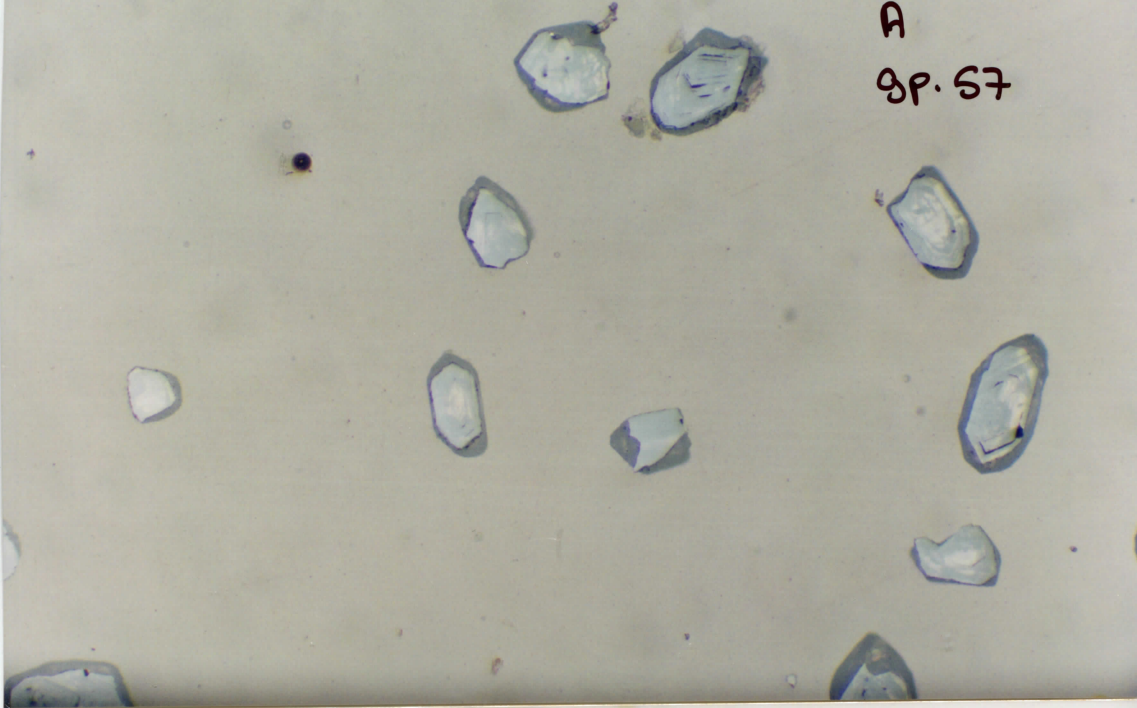
8P.56



UWA 99-58

A

gp. 57



UWA 99-58
Pop A
gp 58

