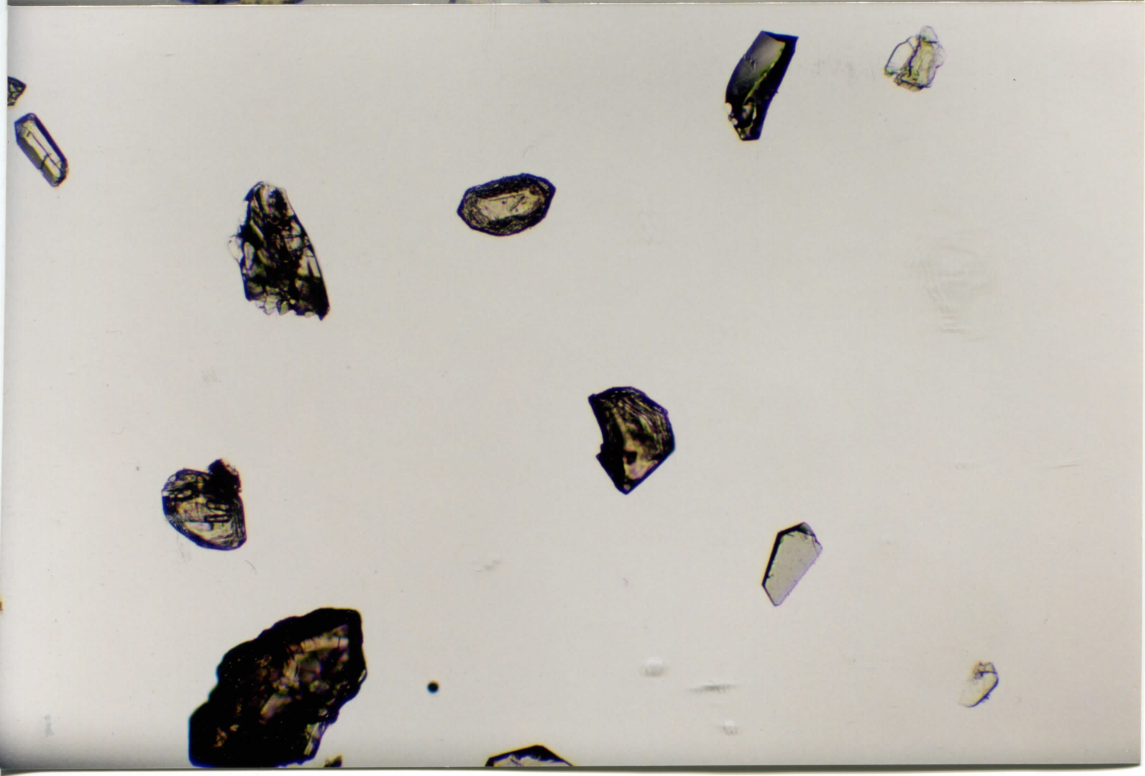
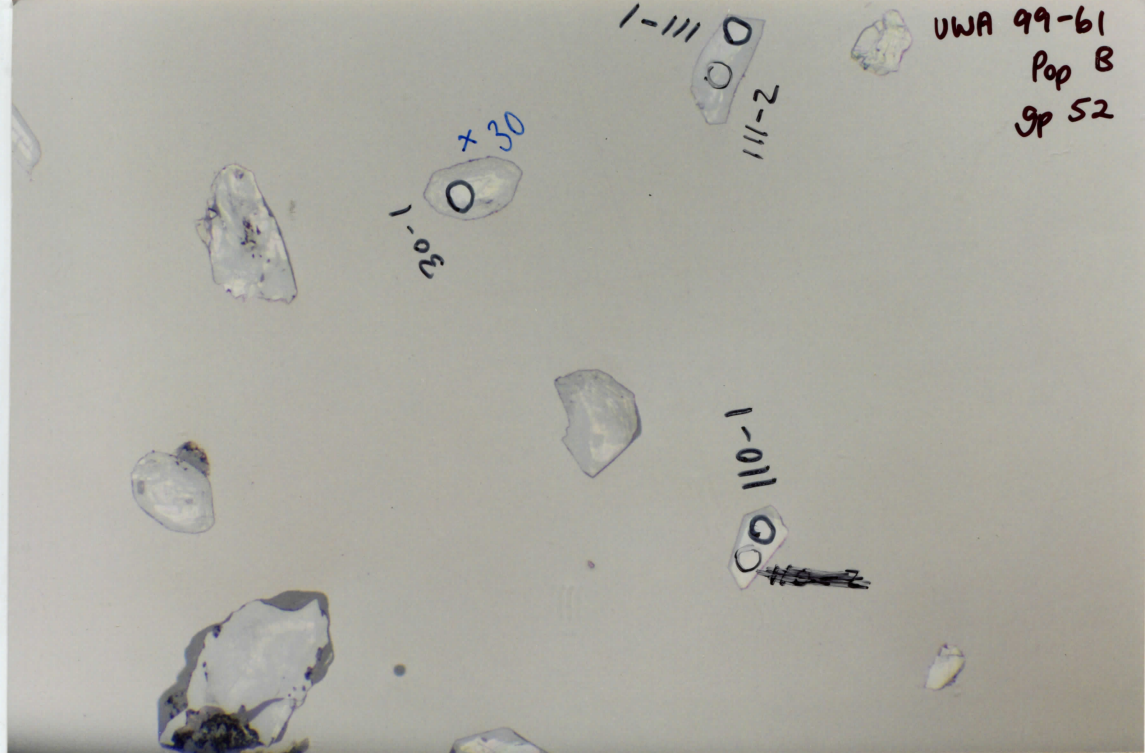


UWA 99-61
Pop B
gp 52

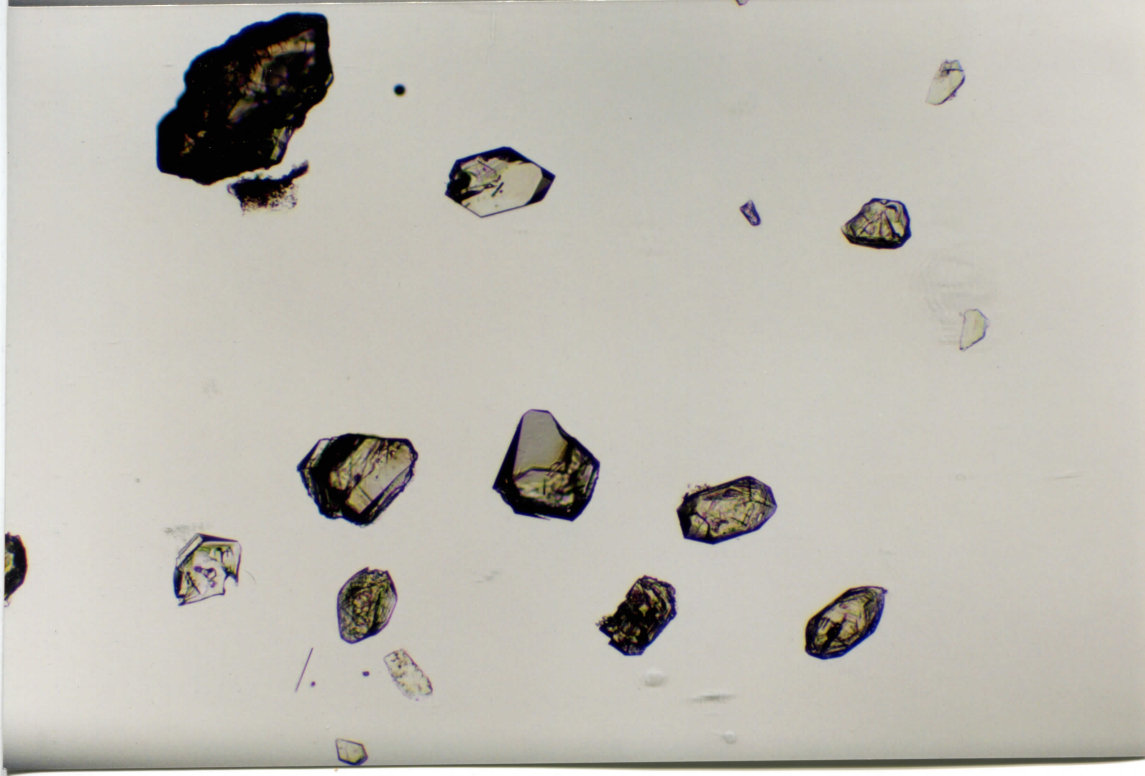
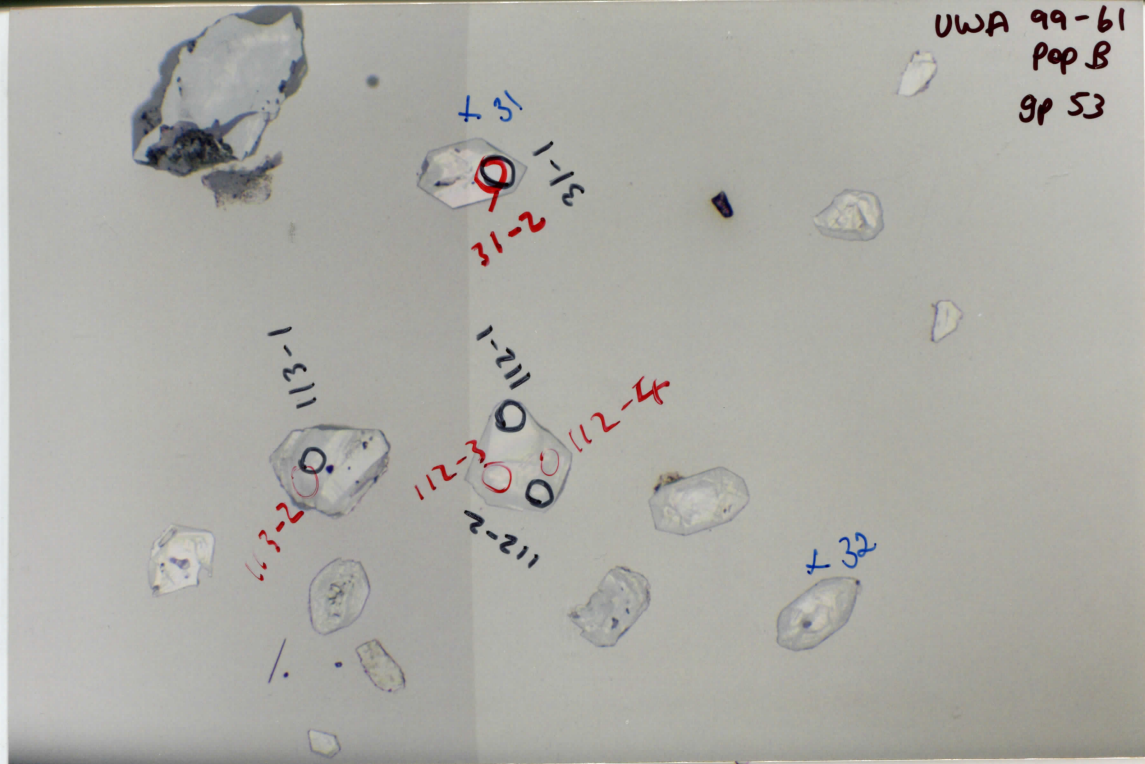
1-111
111-2

+30
1-030

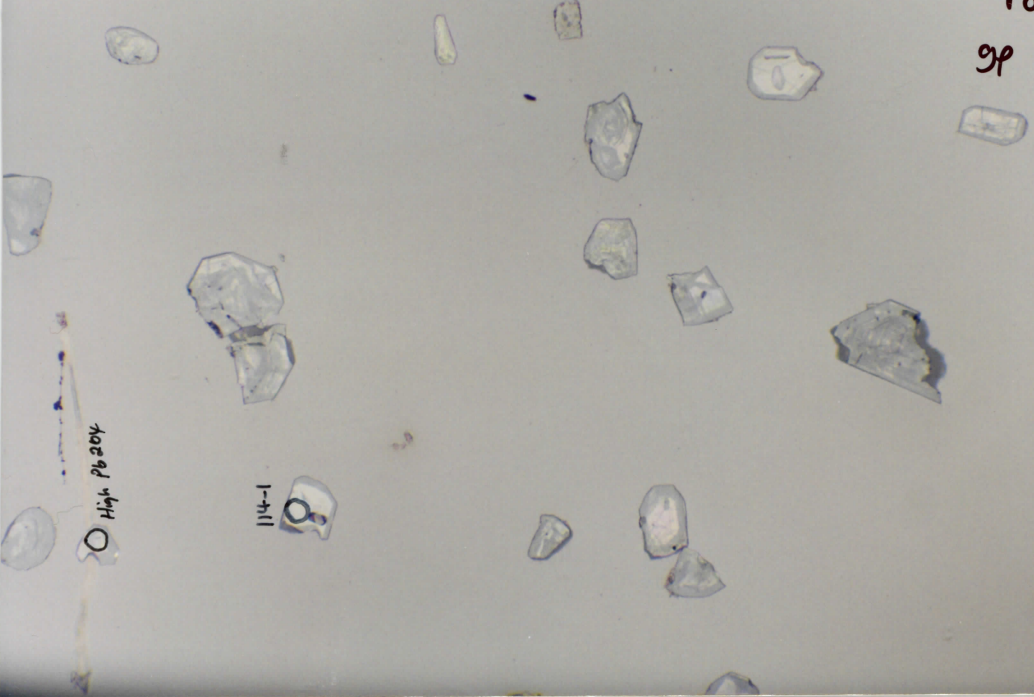
110-1



UWA 99-61
Pop B
gp 53

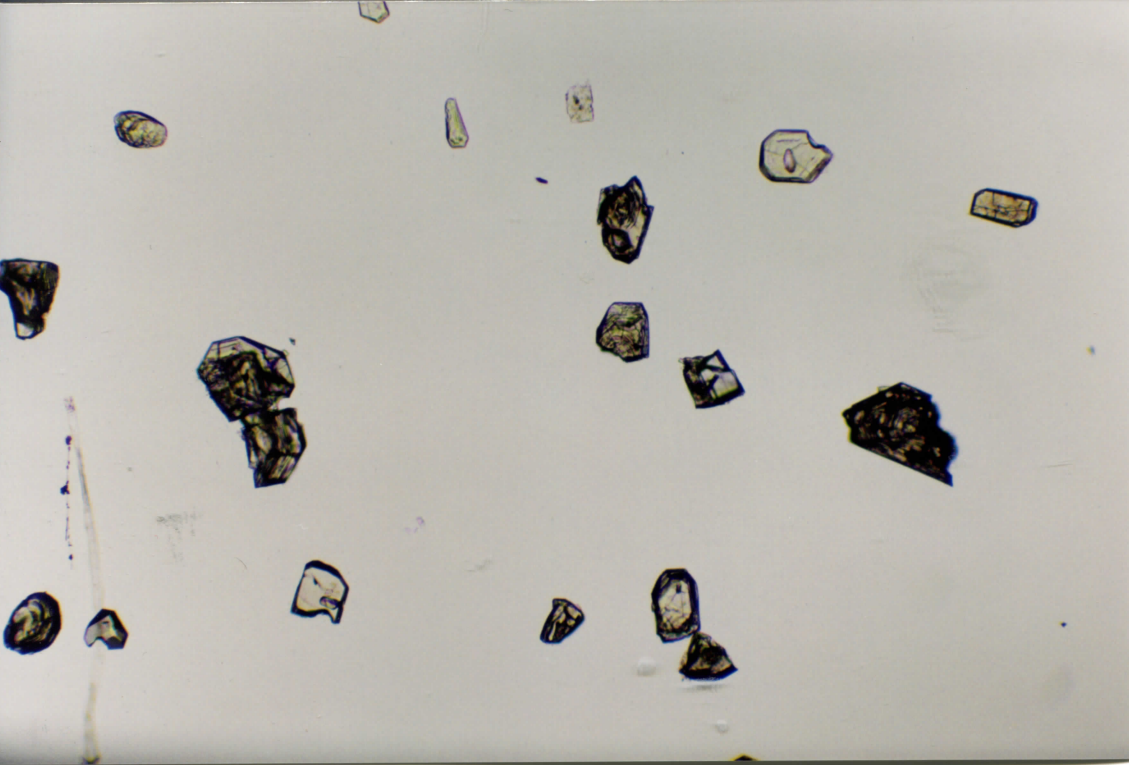


UWA 99-61
Pop B
gp 54



High P6204

114-1



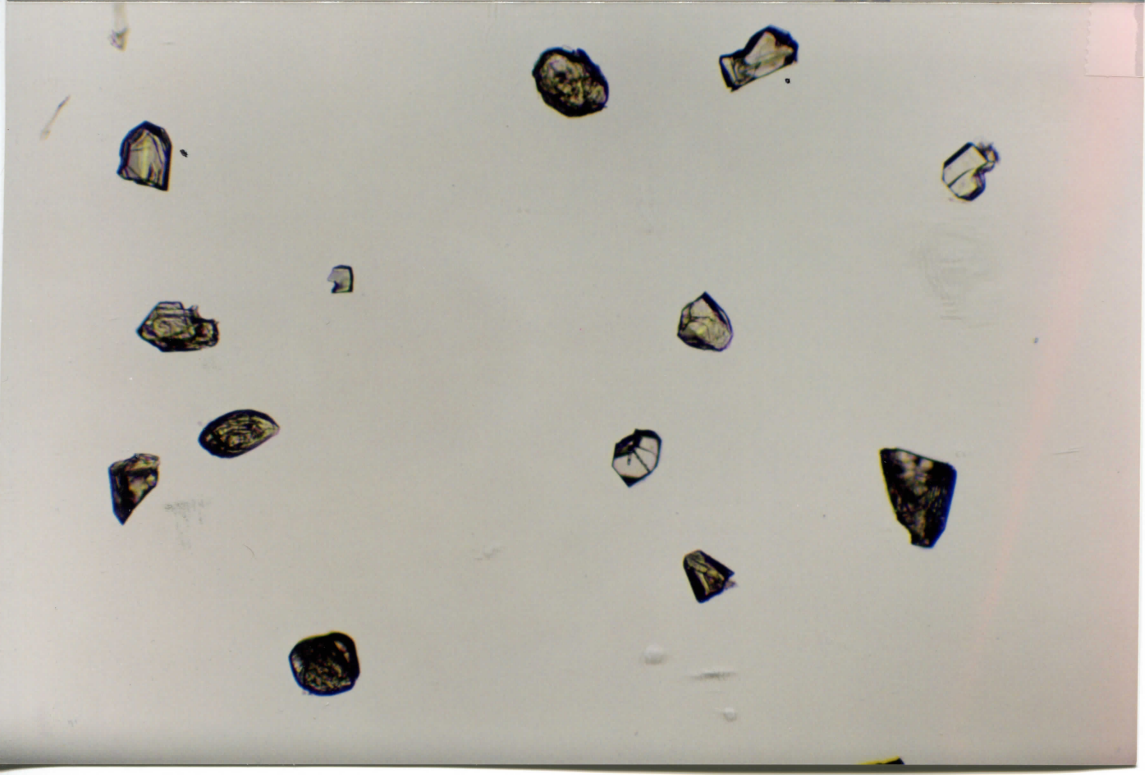
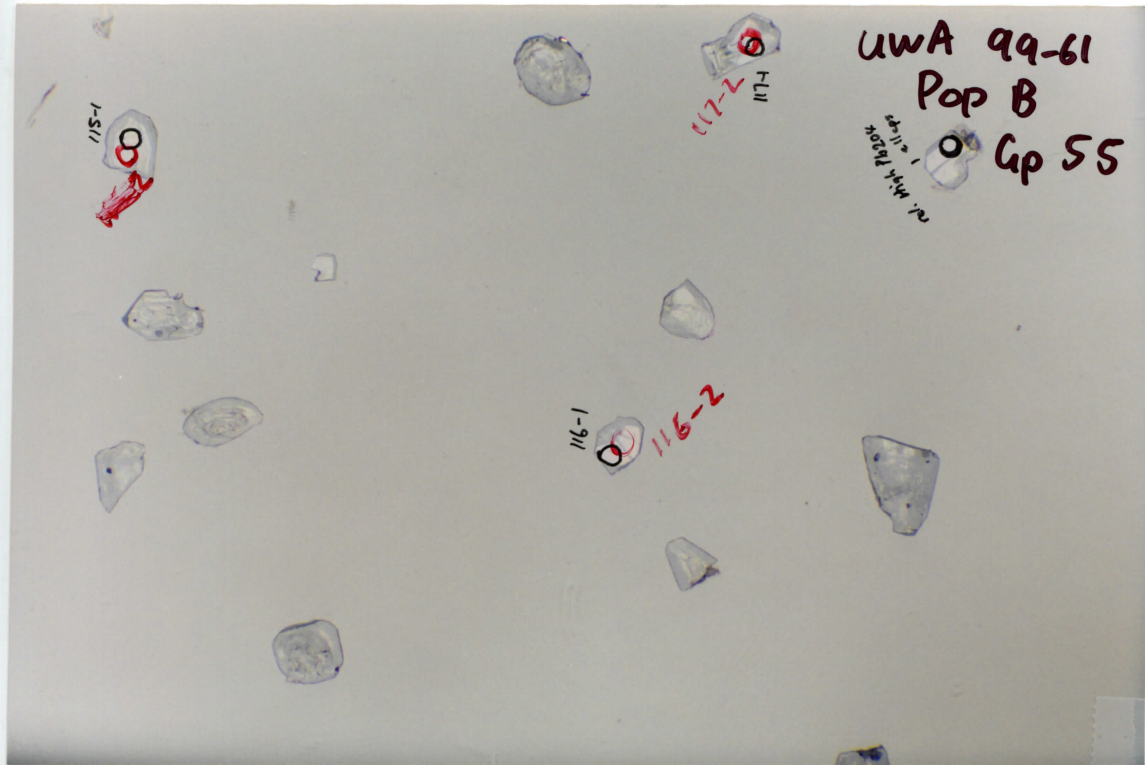
UWA 99-61
Pop B
Gp 55

117-2
LII

115-1

116-1
116-2

117-2
LII



UWA 99-61
Pop B
Up 56

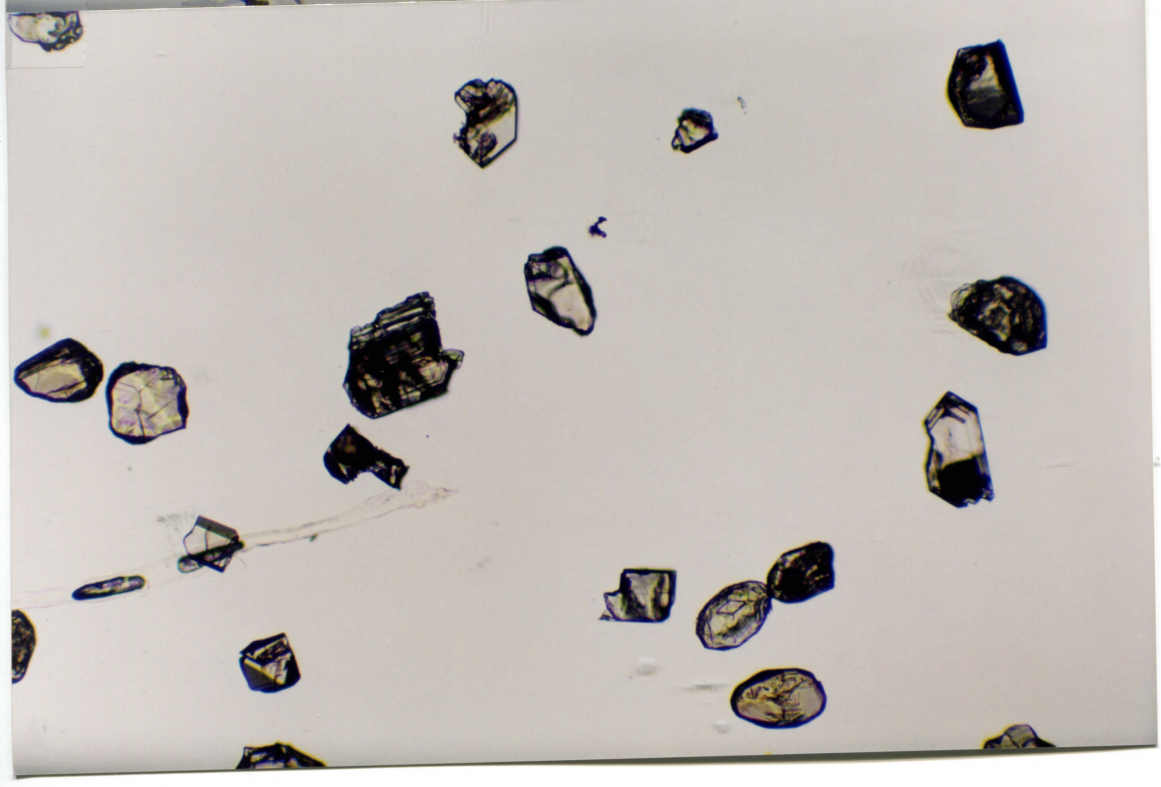
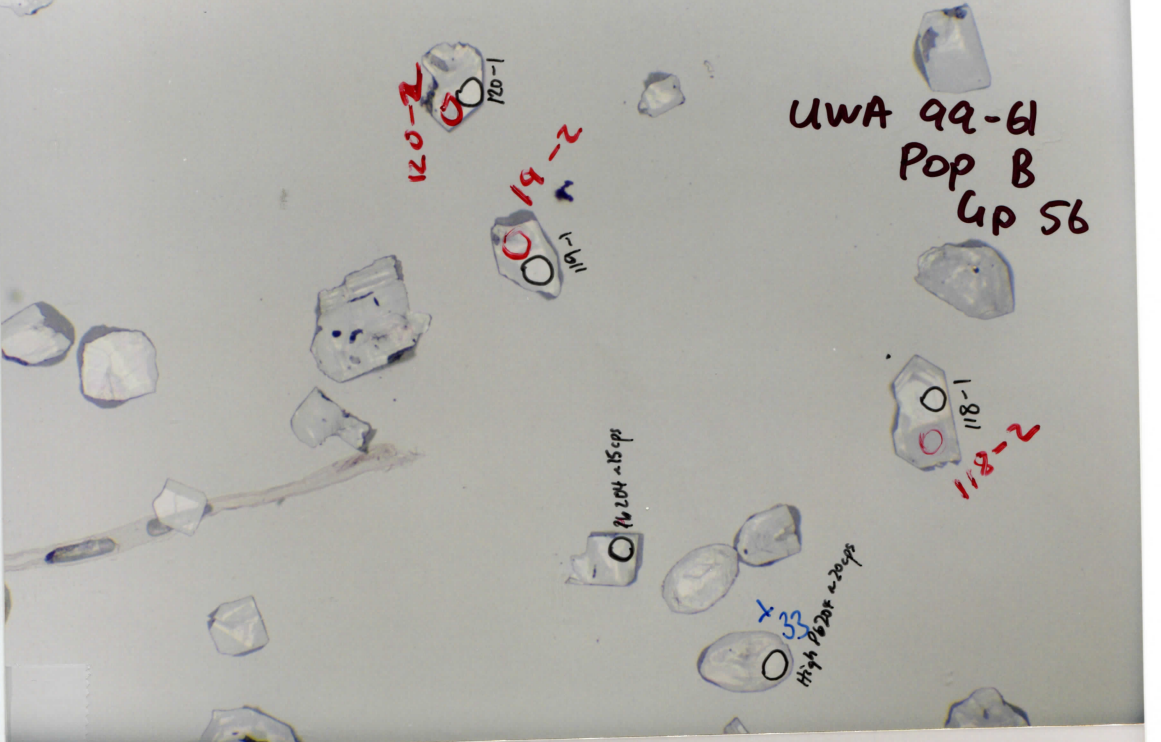
120-2
120-1

119-2
119-1

118-1
118-2

117-1

116-1
High 1020K ~ 2000K



UWA 99-61
Pop B
Gp 57

42+

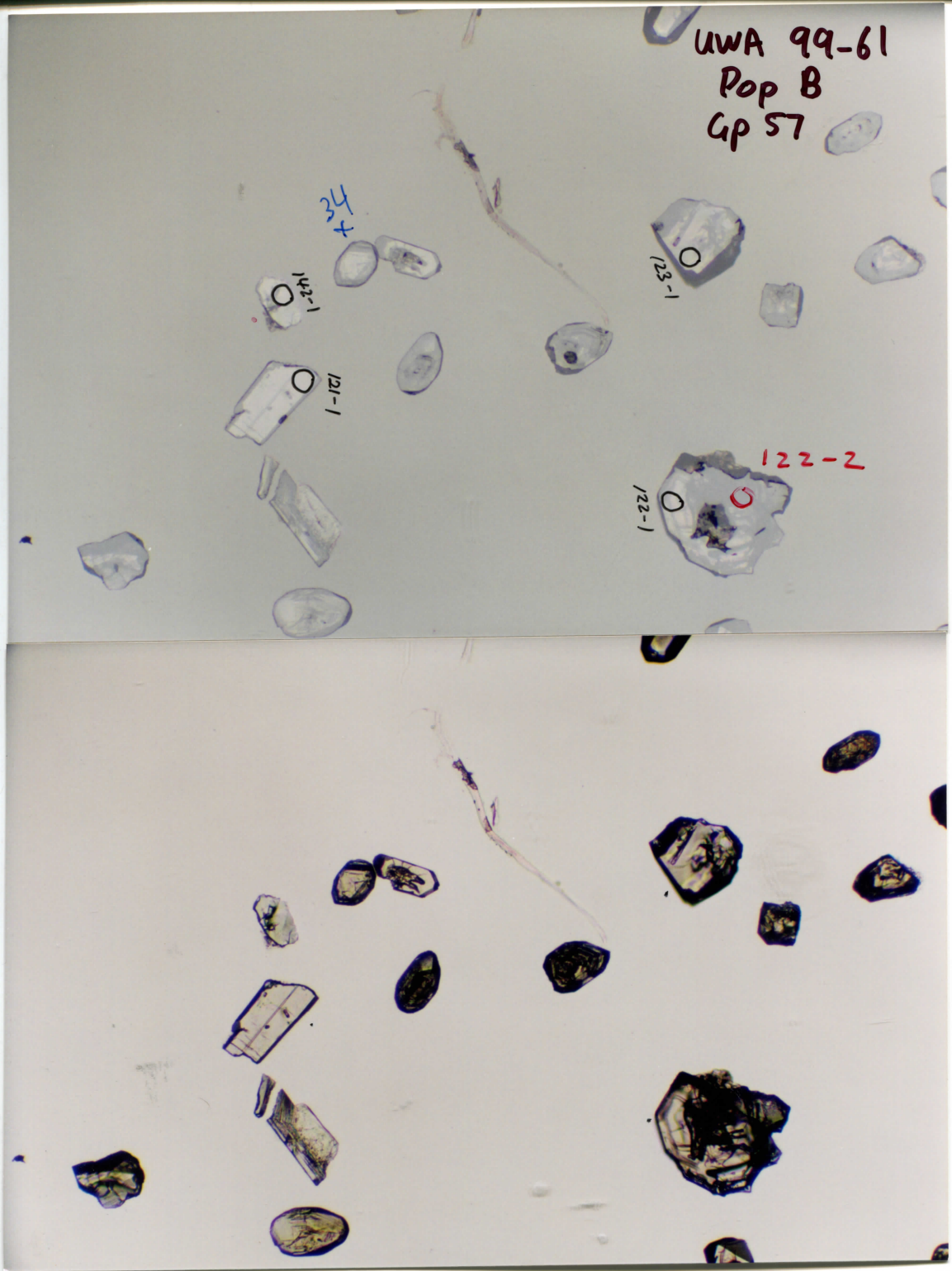
142-1

121-1

123-1

122-2

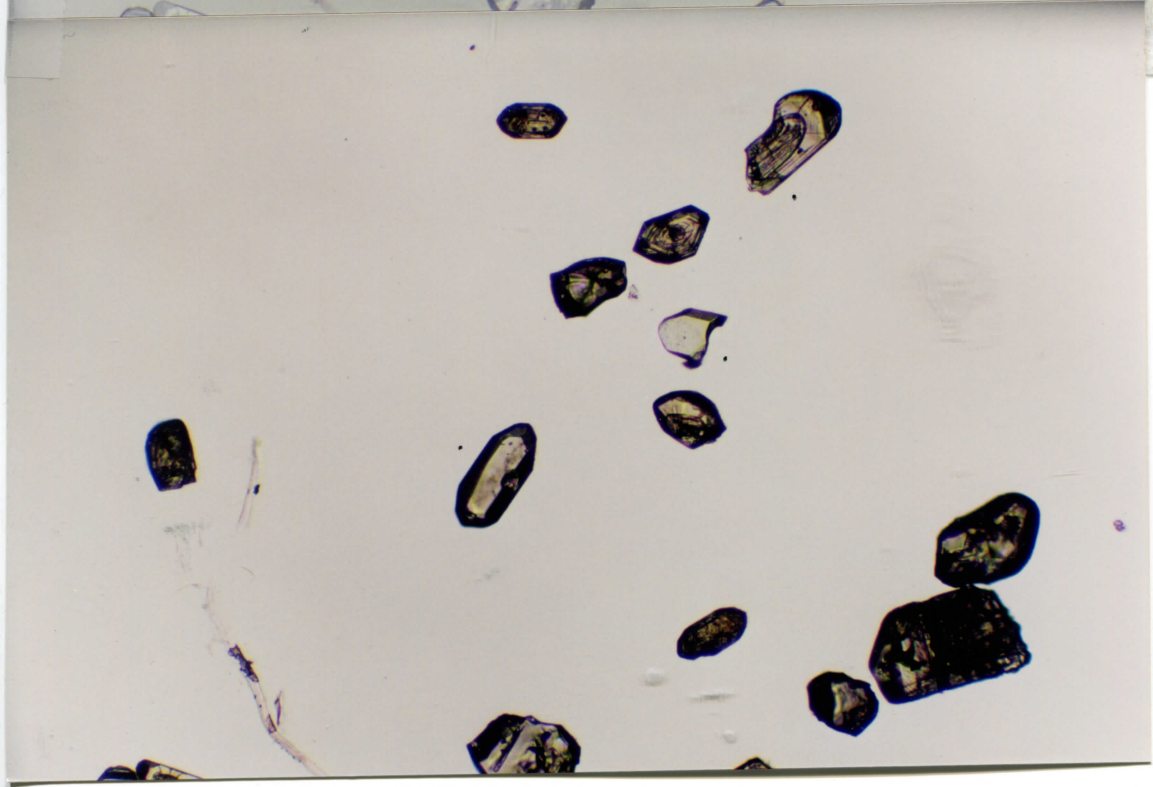
122-1



UWA 99-61
Pop B
Up 58

151

6124-1



UWA 99-61

Pop B

Gr 59

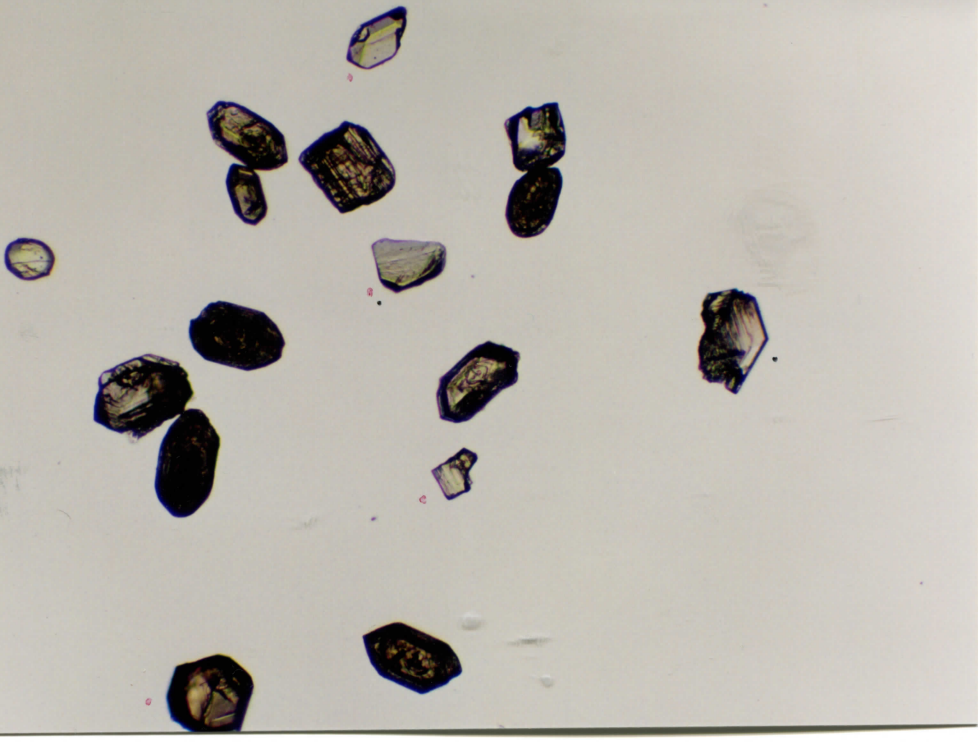
30x

143-1

144-1

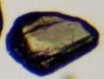
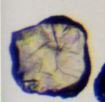
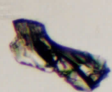
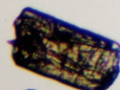
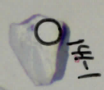
145-1

P201-1395

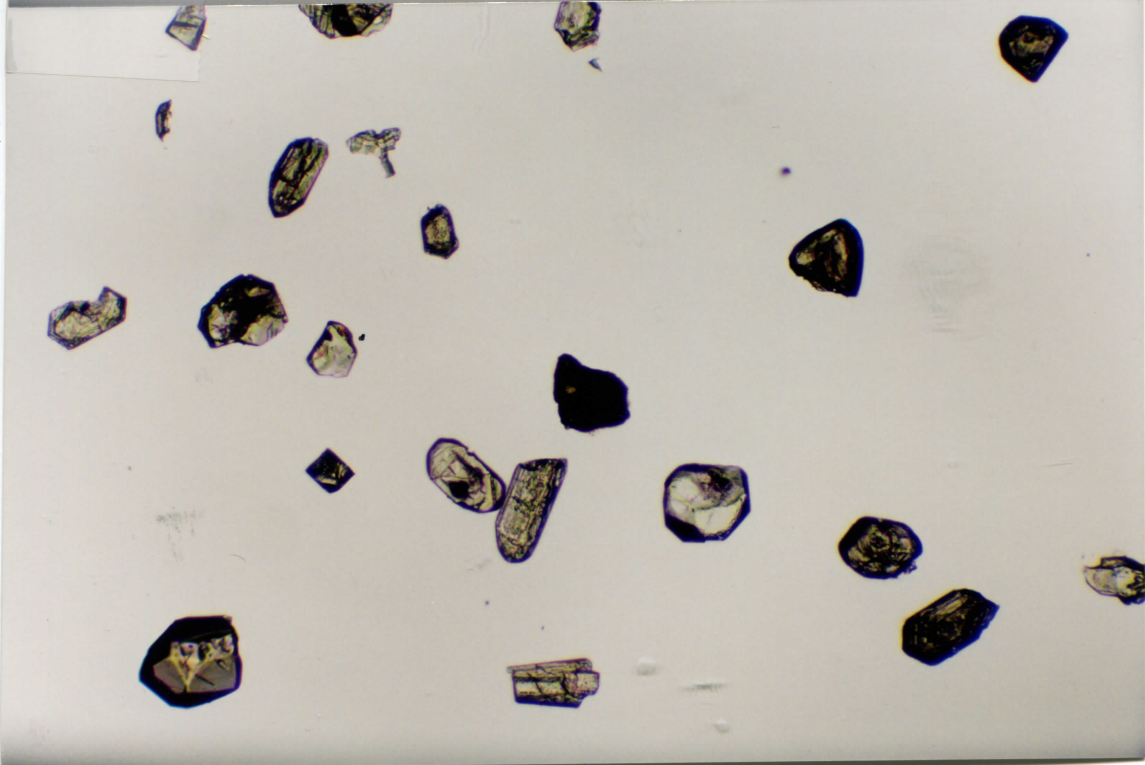
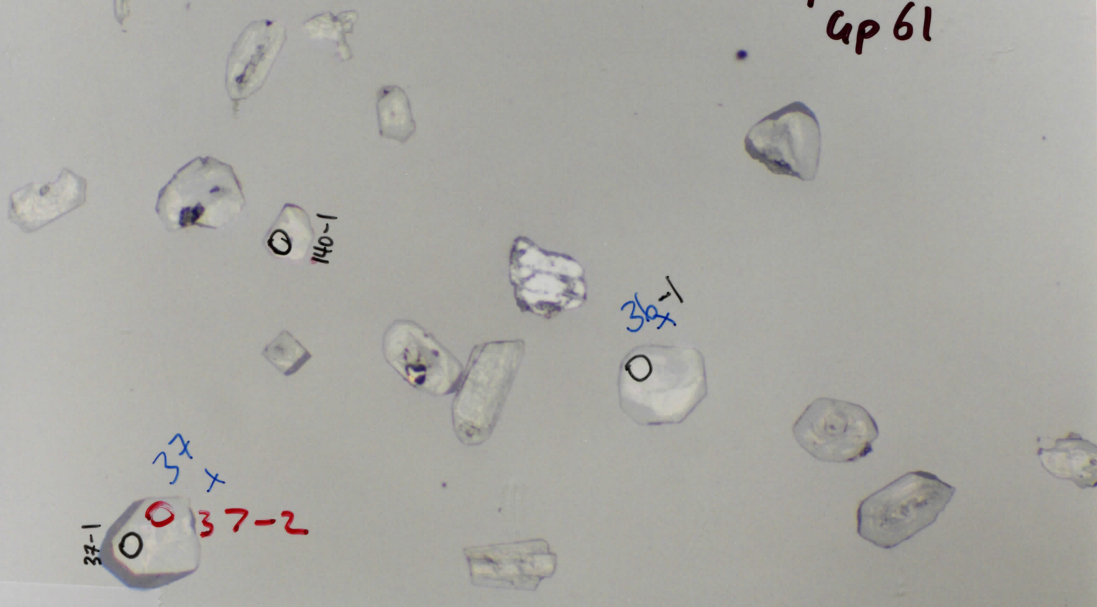


UWA 99-61
Pop B
Gp 60

126-1



UWA 99-61
Pop B
Apr 61



38+ UWA 99-61
Pop B
GP 62

138-1

29+

38-1

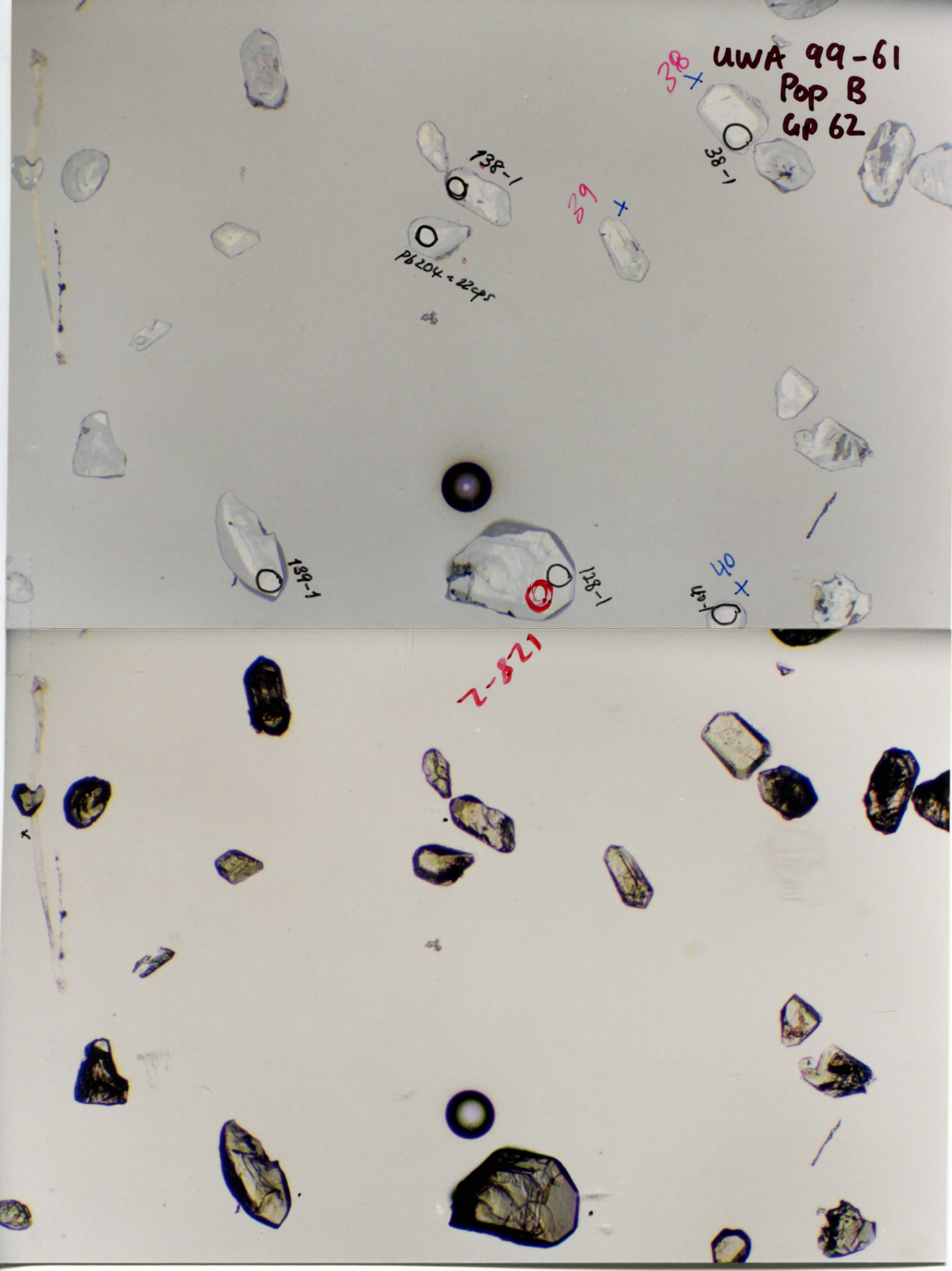
P6204-22-95

138-1

138-1

40+

2-821



UWA 99-61
Pop B
Gp 63

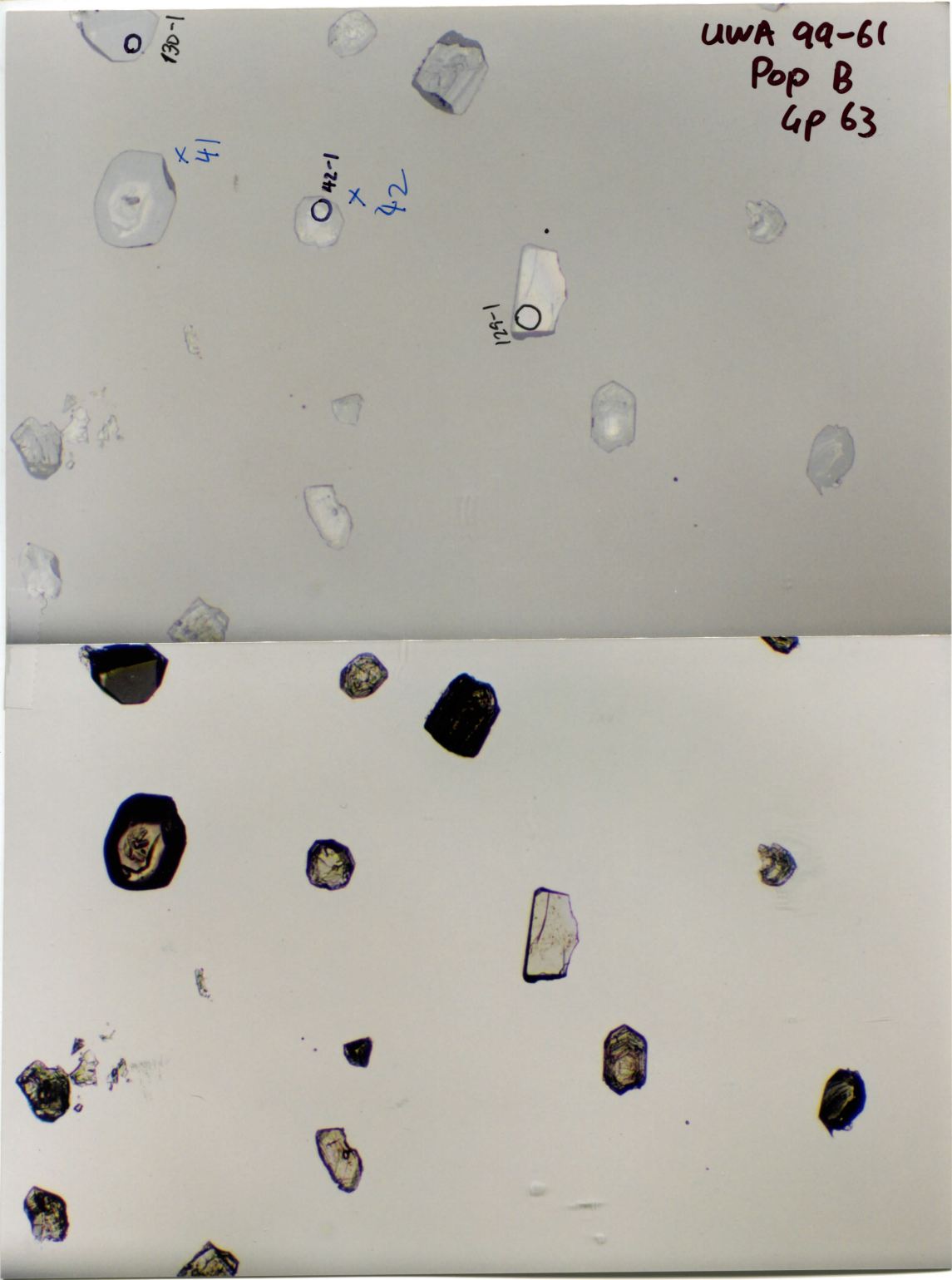
130-1

x 41

42-1

x 42

129-1

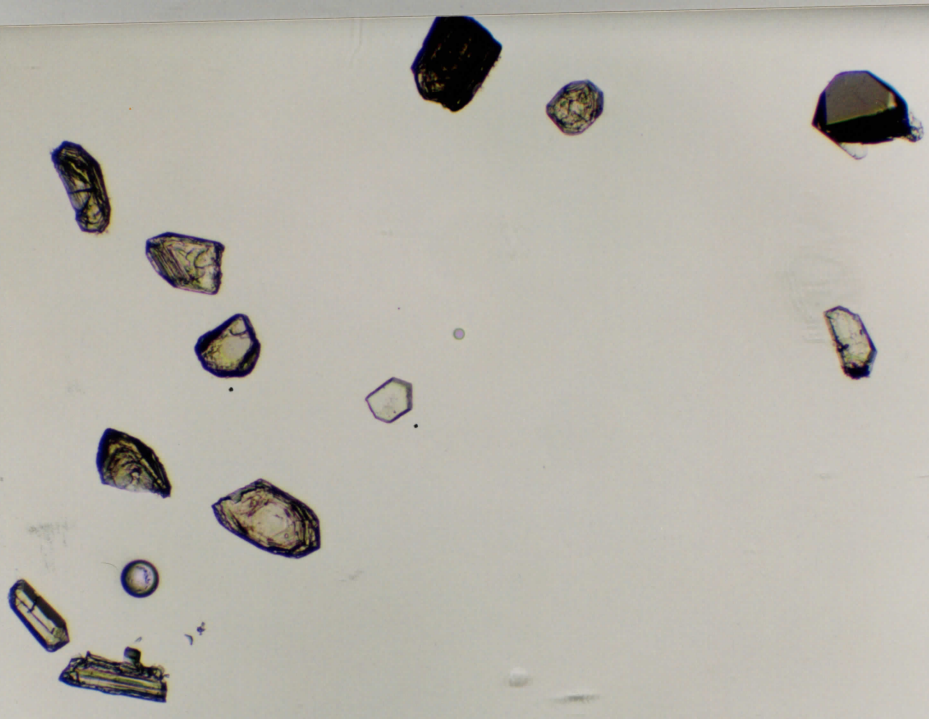
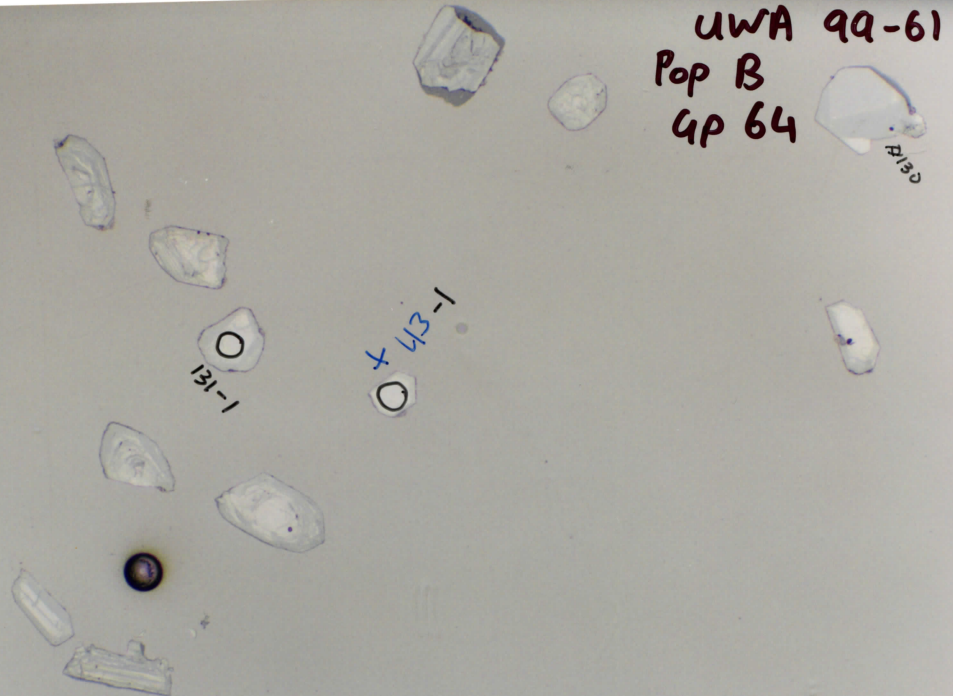


UWA 99-61
Pop B
4P 64

2/13

1-121

+ 43-1



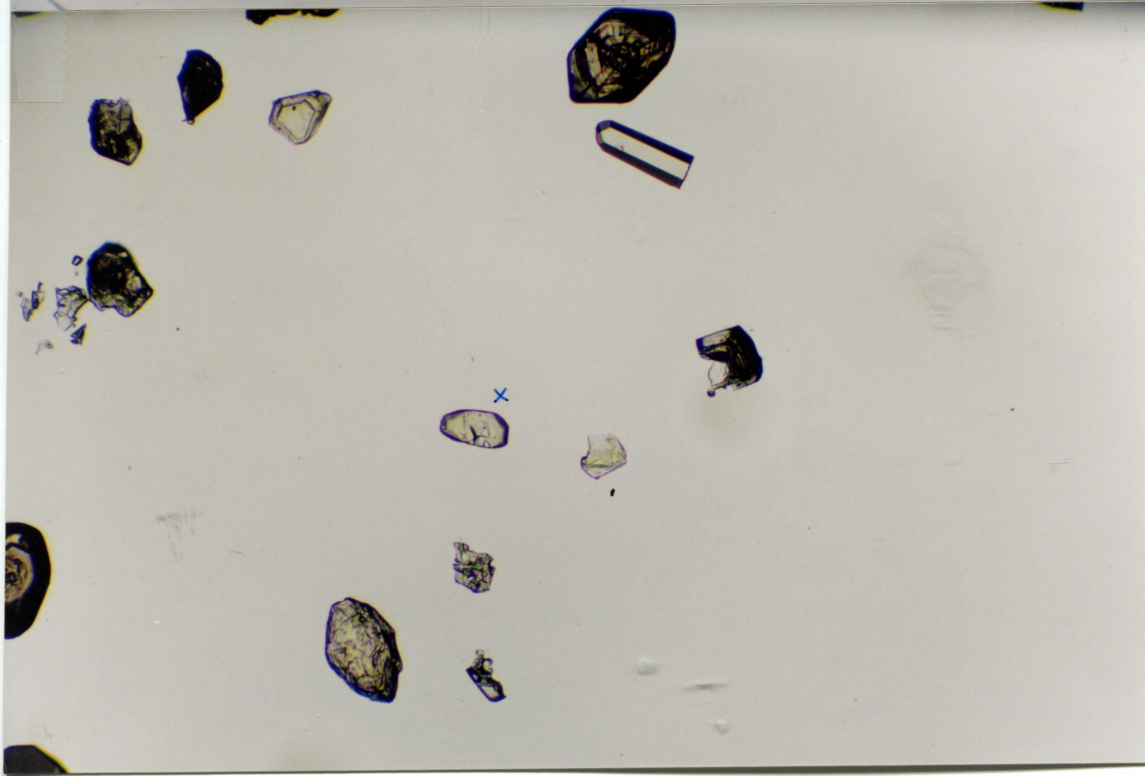
UWA 99-61
Pop B
Gp 65

416 X
45 X
45-1

X 47

44 X
P201 2195

132-1



X

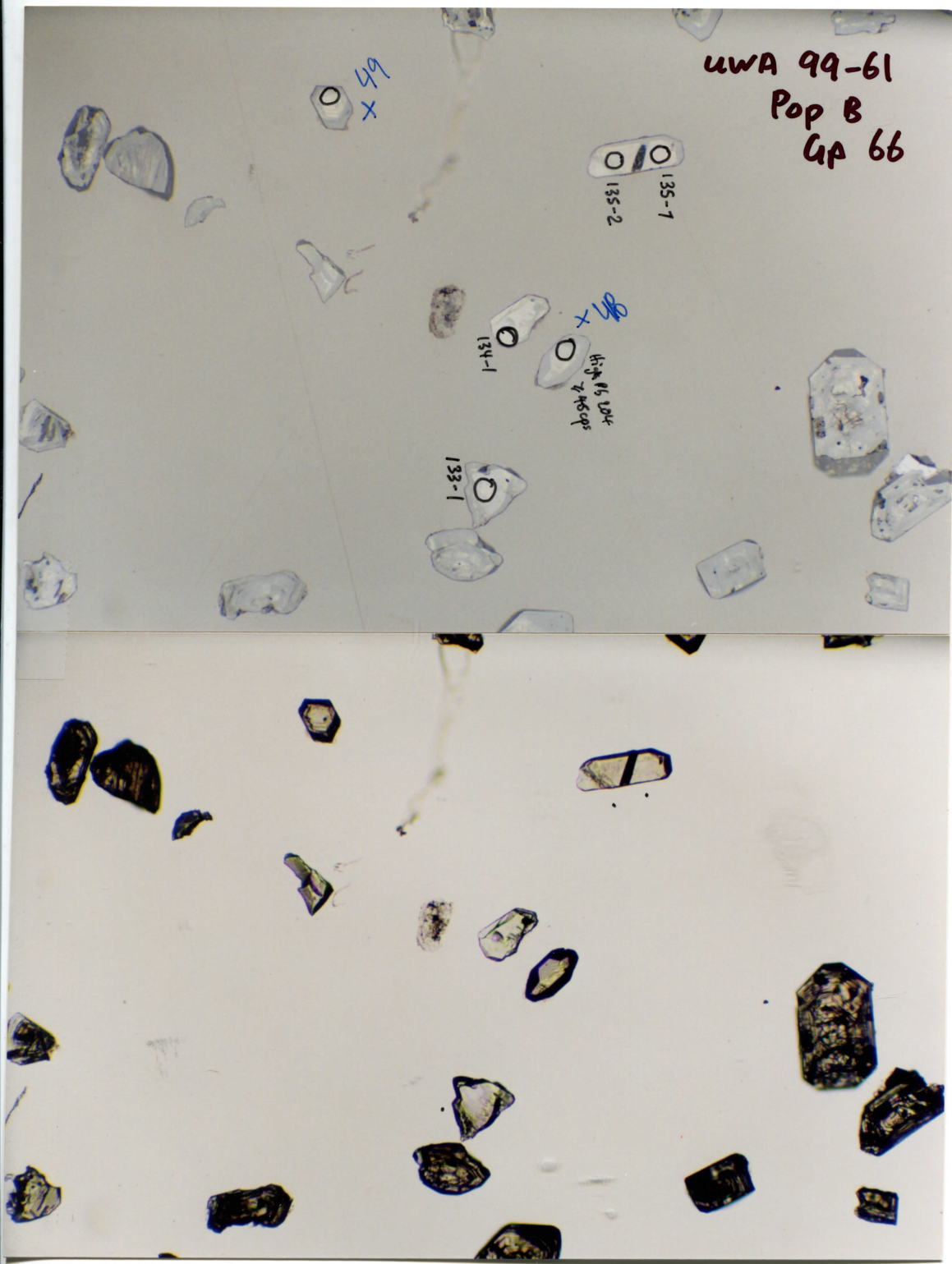
UWA 99-61
Pop B
Gr 66

6/5 X

135-1
135-2

134-1
High 95 Dk
745 cps

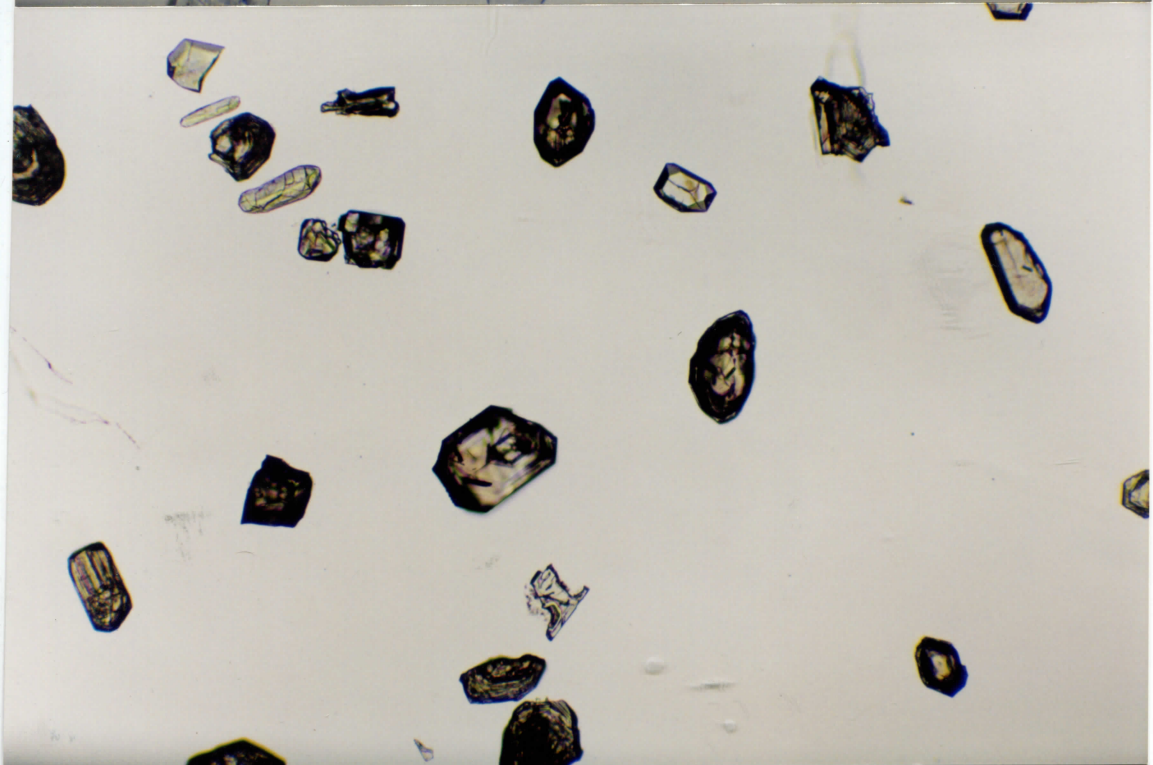
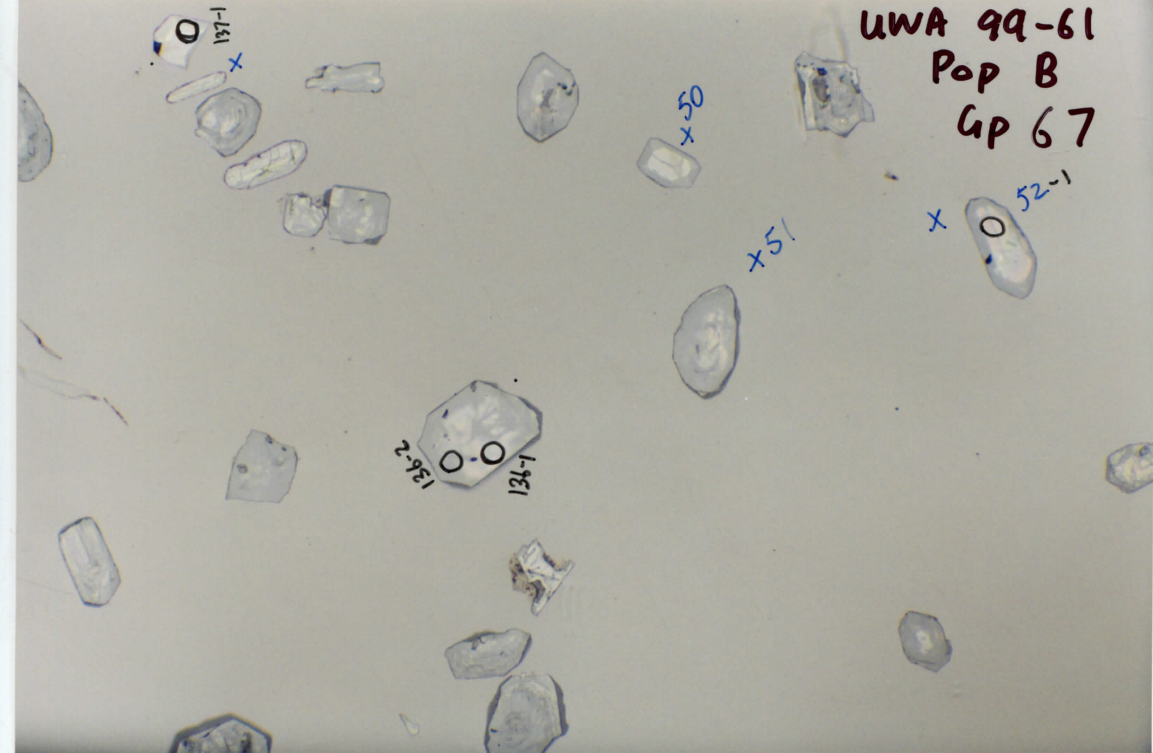
133-1



UWA 99-61

Pop B

Gp 67



UWA 99-61
Pop B
GP 68

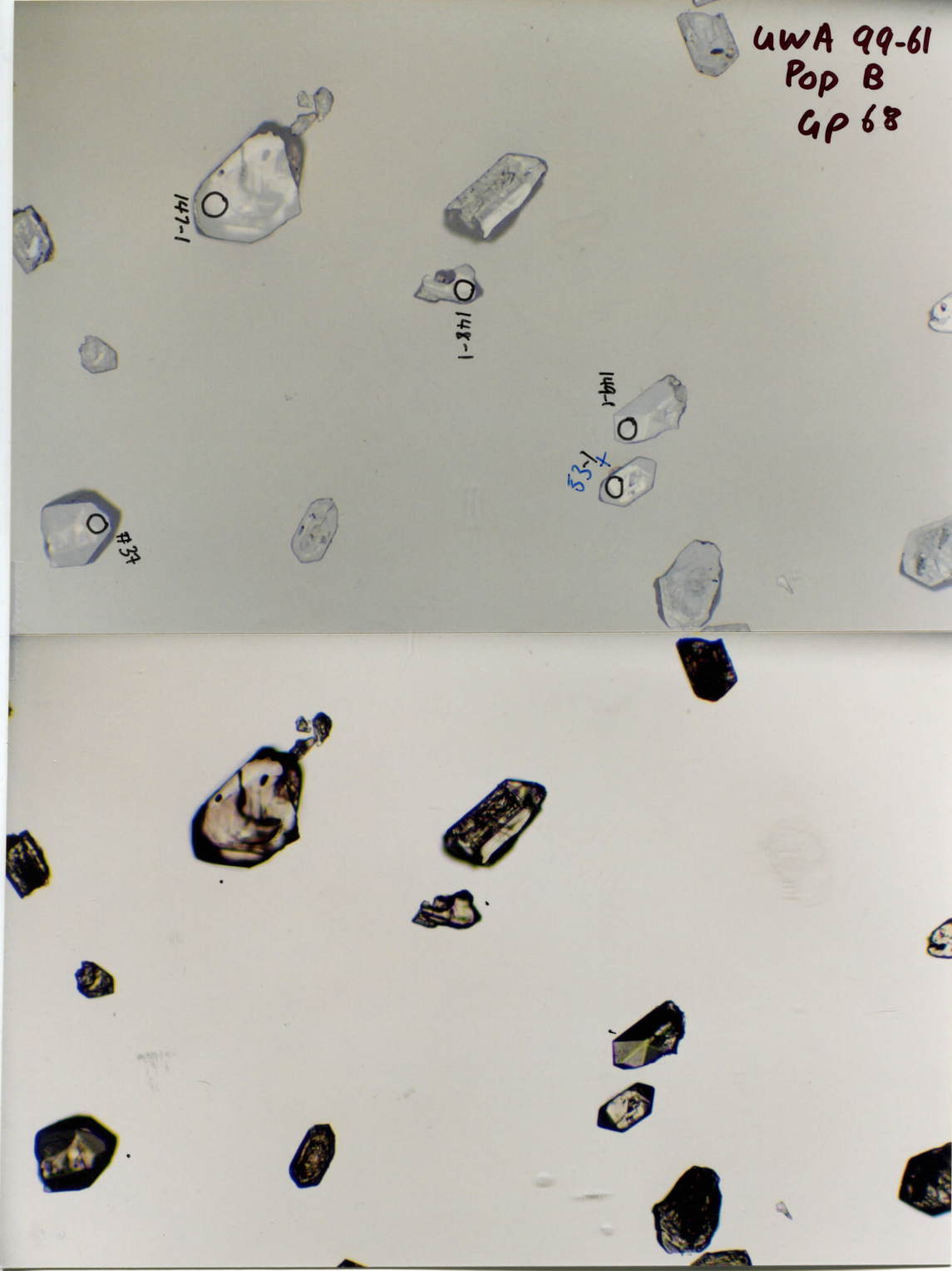
147-1

148-1

149-1

53-1

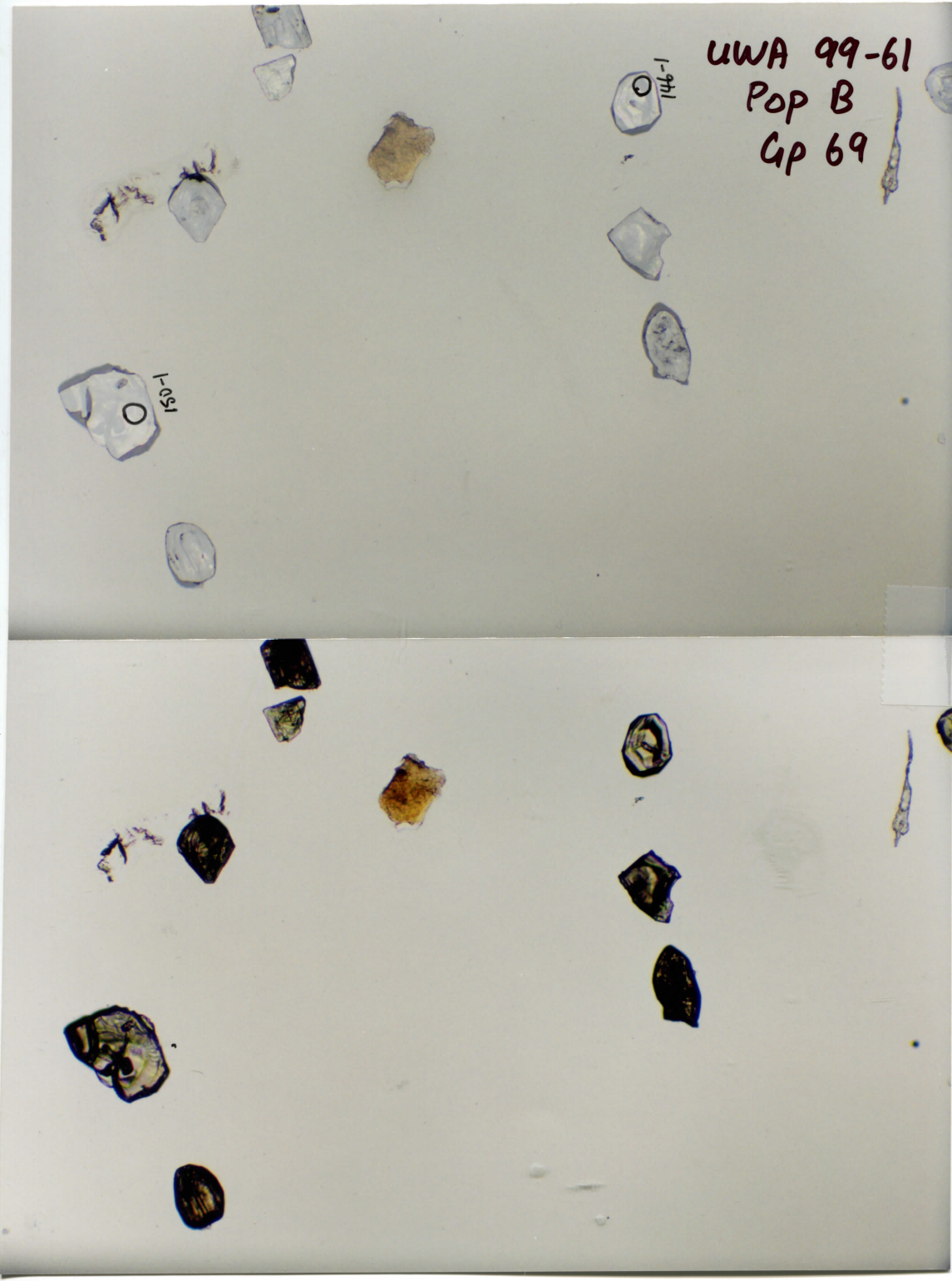
#52



UWA 99-61
Pop B
Gp 69

1-941

1-501



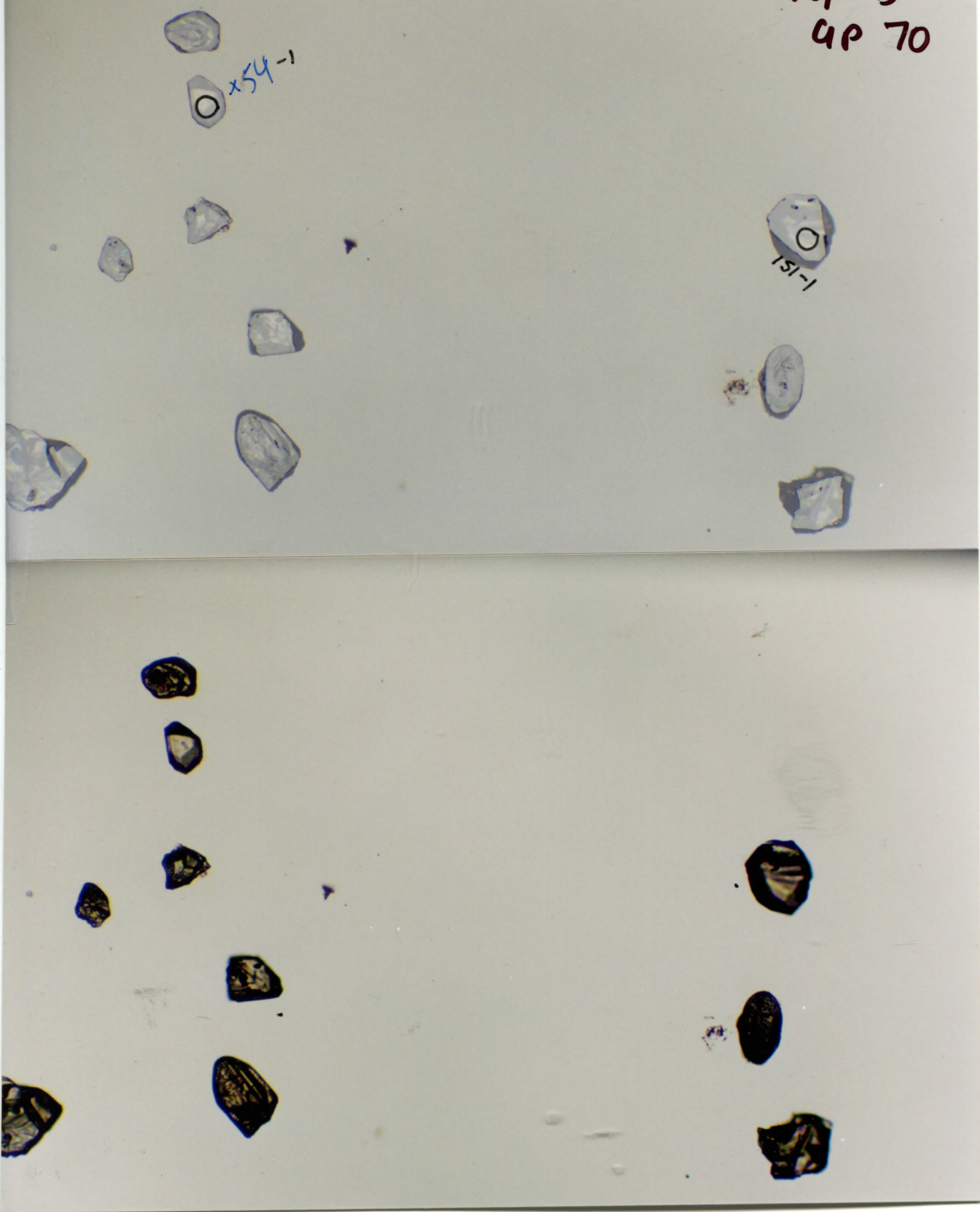
UWA 29-61

Pop B

UP 70

x54-1

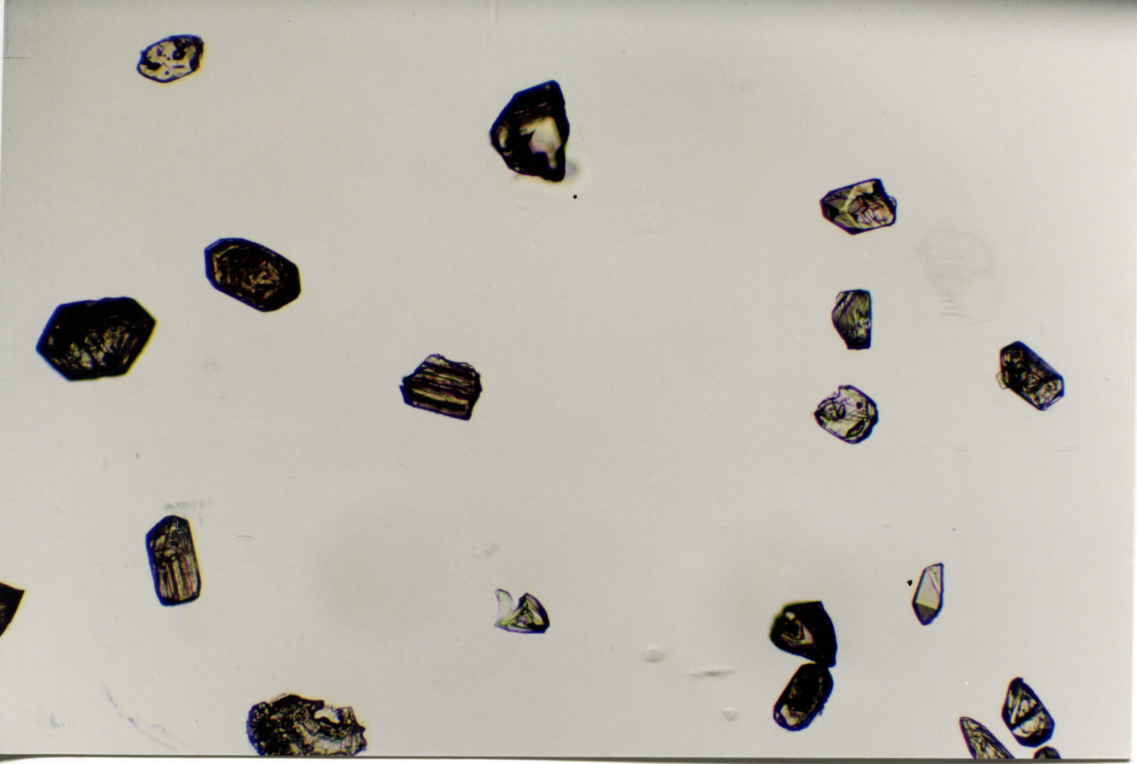
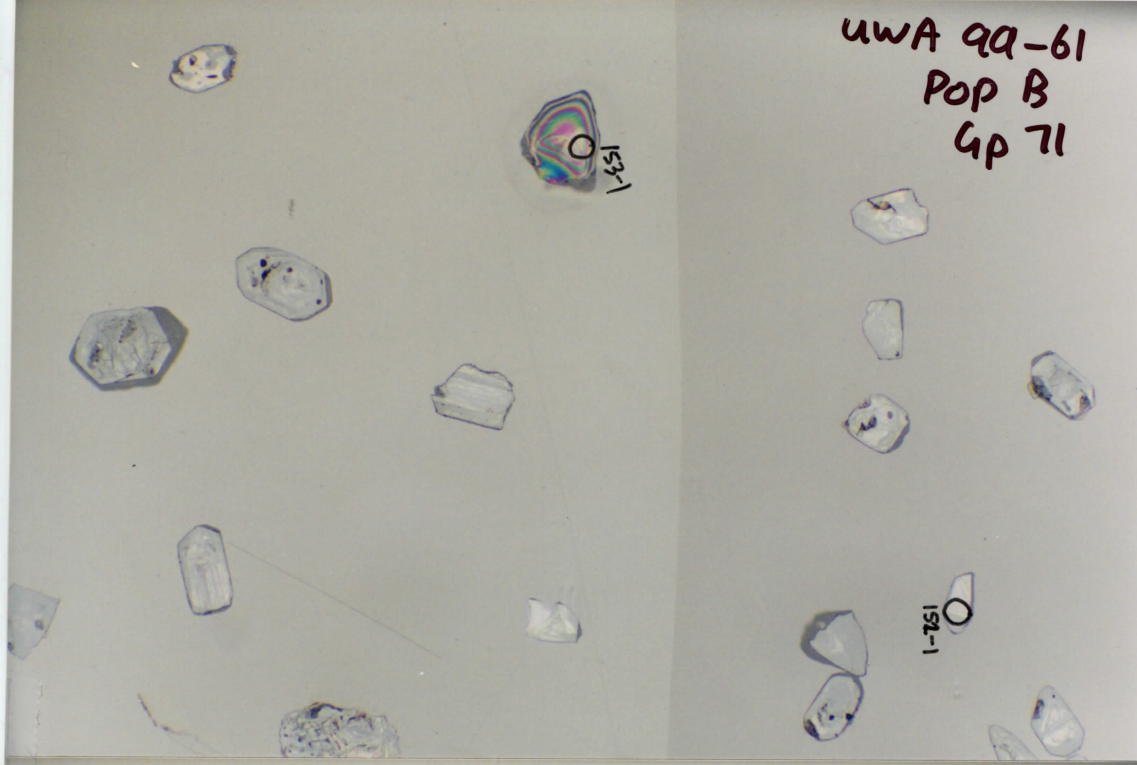
151-1



uwa 9a-61
Pop B
Gp 71

152-1

152-1

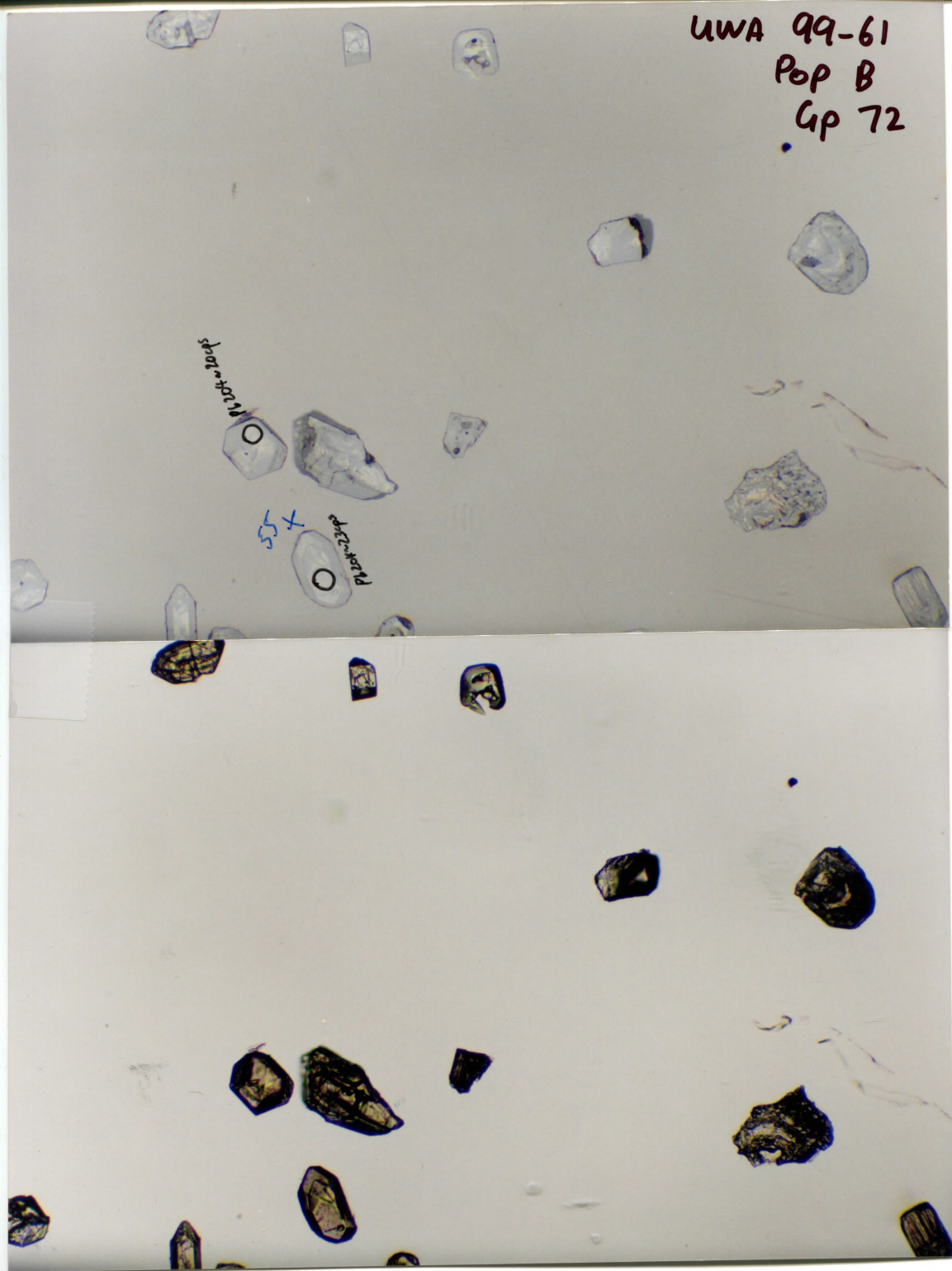


UWA 99-61
Pop B
Gr 72

sp. 100-100-100

55+

sp. 100-100-100



VWA 99 61
Pop B
gp 73

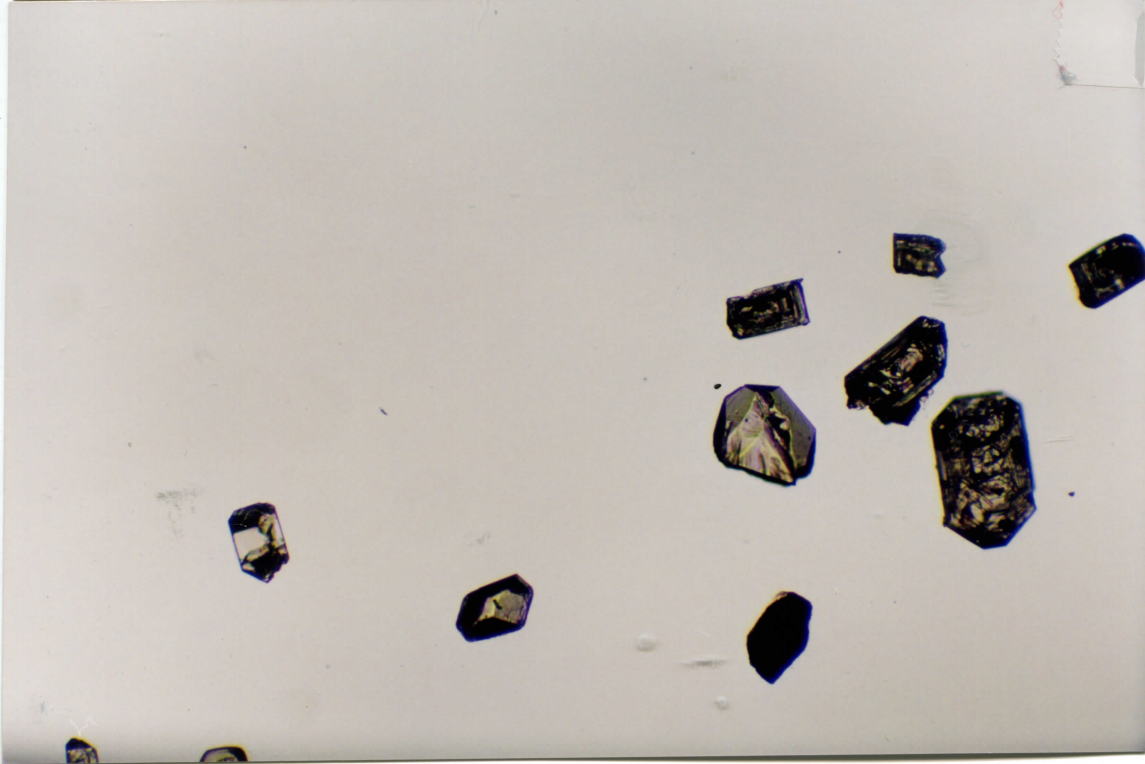
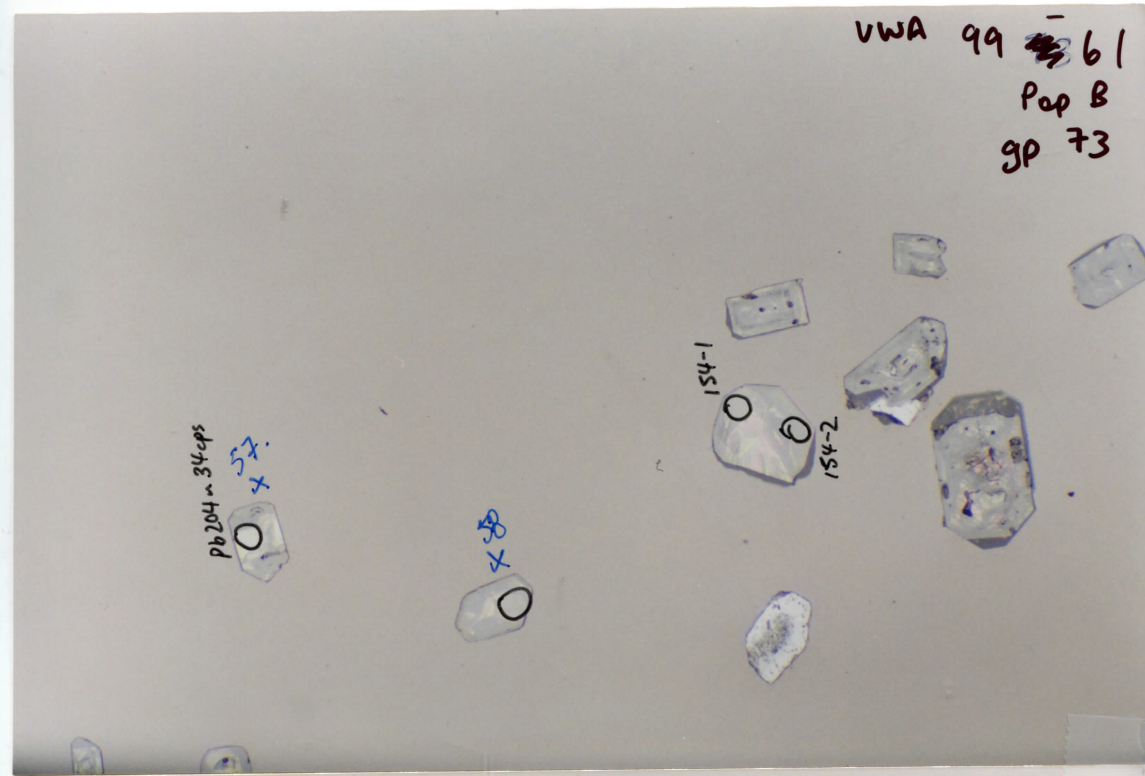
pb204 m 34-eps

57
x

154-1

154-2

x

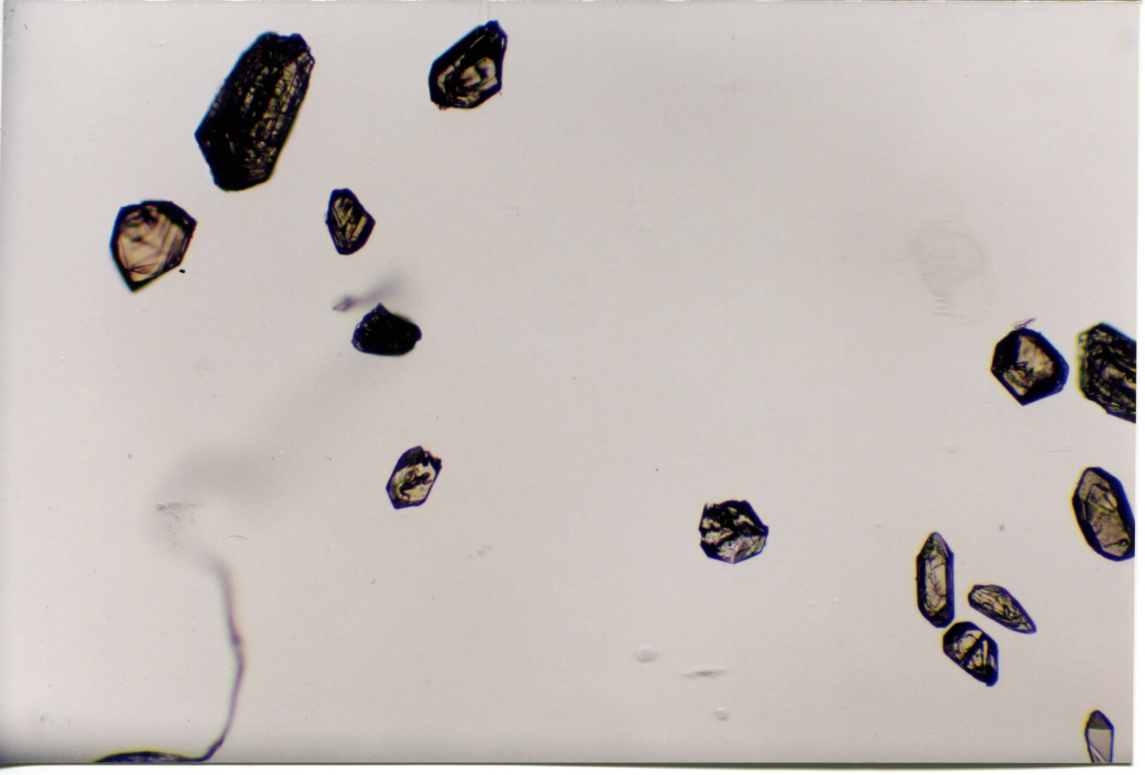
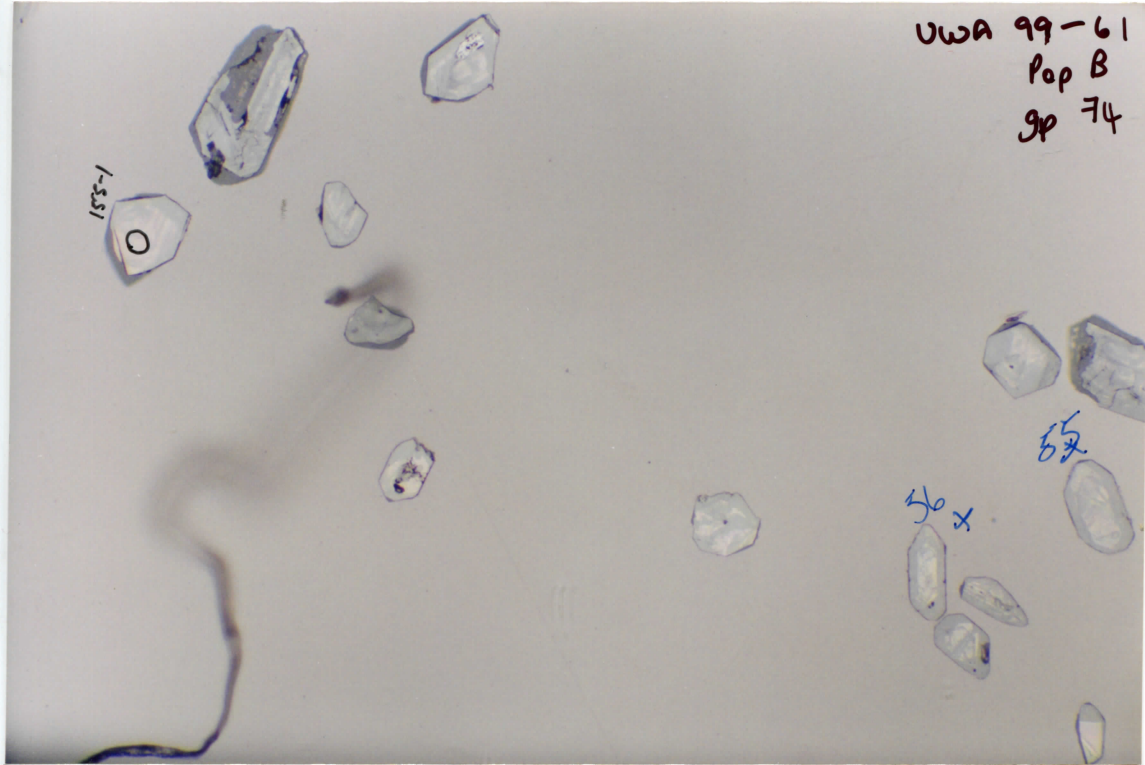


UWA 99-61
Pop B
gp 74

155-1
O

52

56 x



UWA 99-61
Pop B
gp 75

