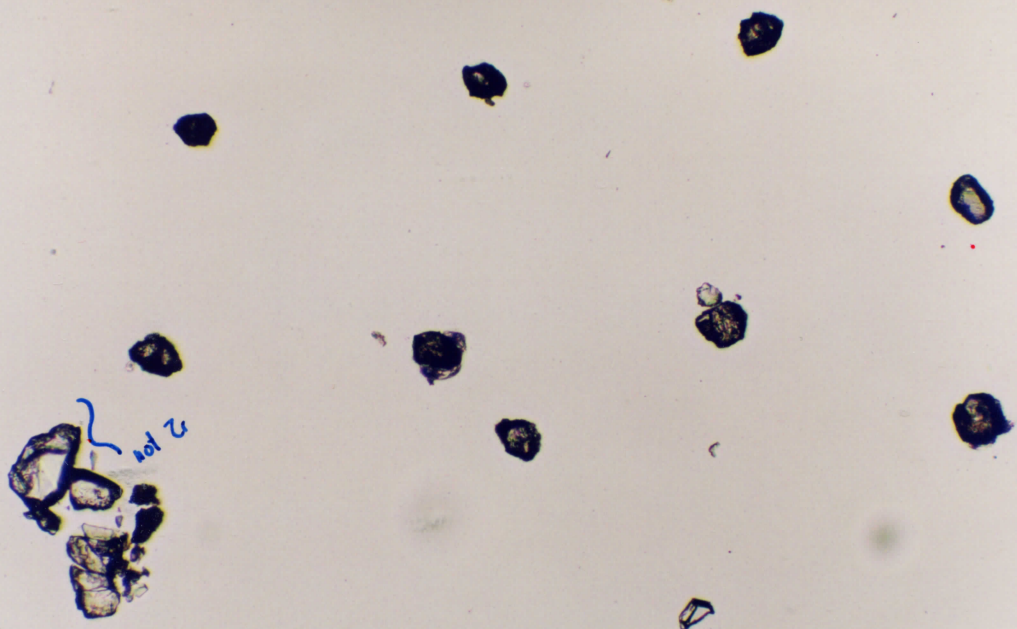
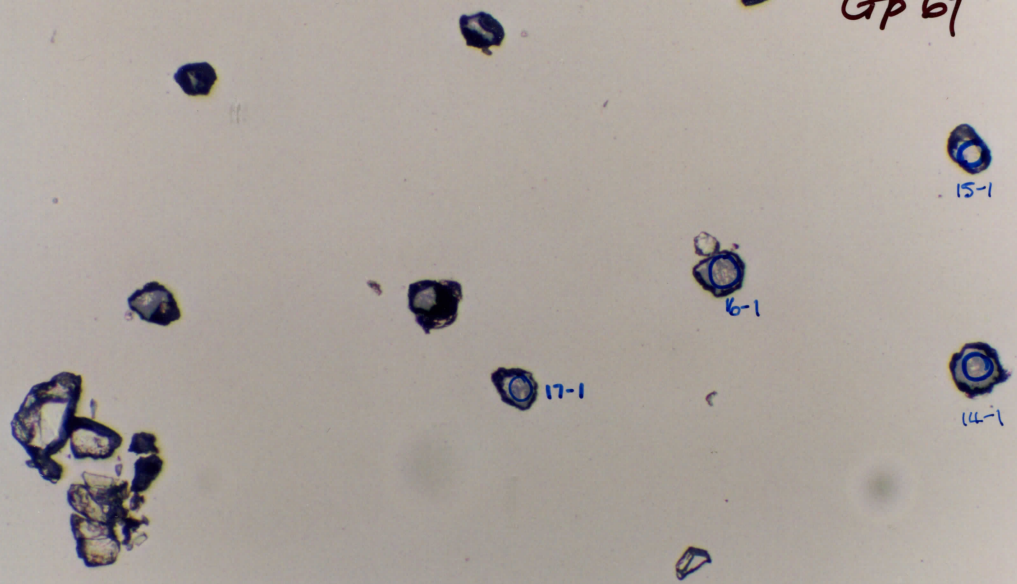


UWA 99-85
H: CN111-9
GTP 69

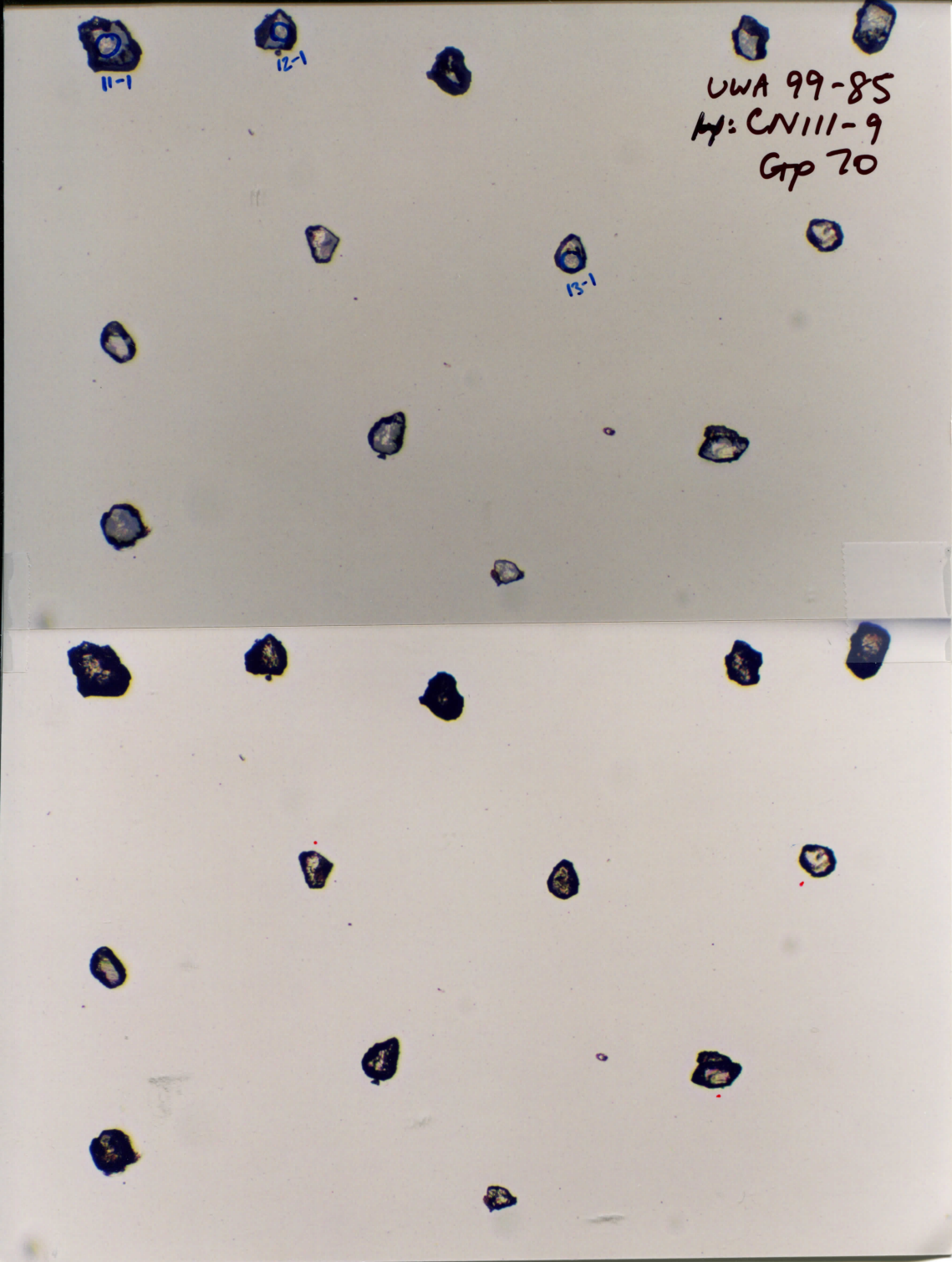


UWA 99-85
M: CN111-9
GTP 70

11-1

12-1

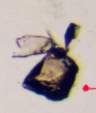
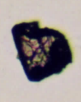
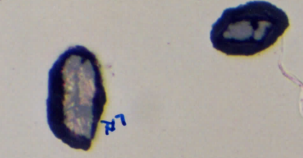
13-1



OWA 99-85

H:CN111-9

GTP   (2)



UWA 97-85
M:CN111-9
Gp 72 (1)

76

8-1

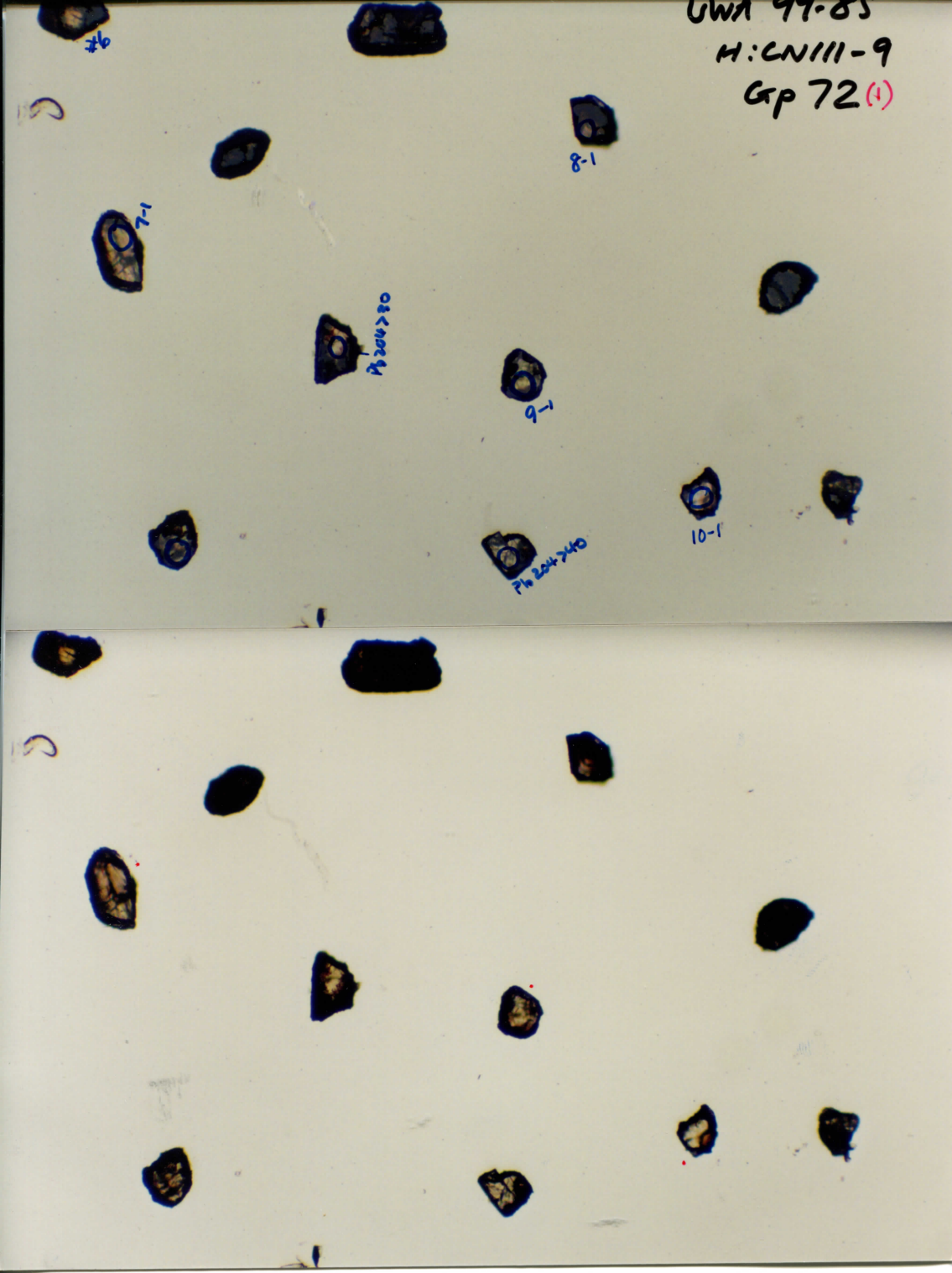
7-1

Ph 204-20

9-1

10-1

Ph 204-240



OWA 91-85
H: CN111-9
CTP 73

