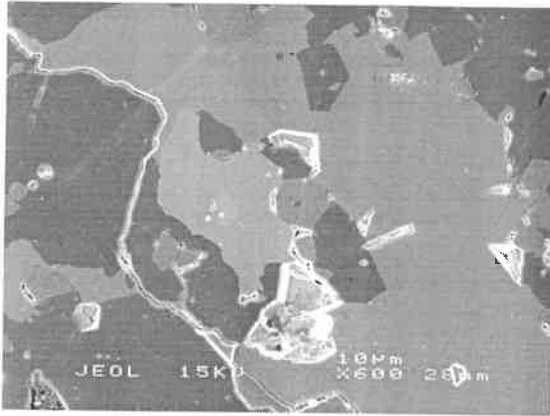


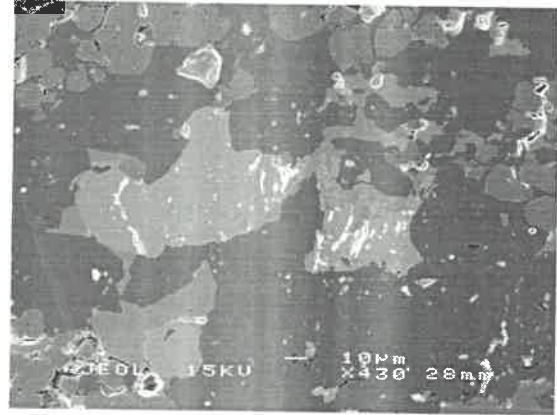
Already in document

Already in document

B3444s

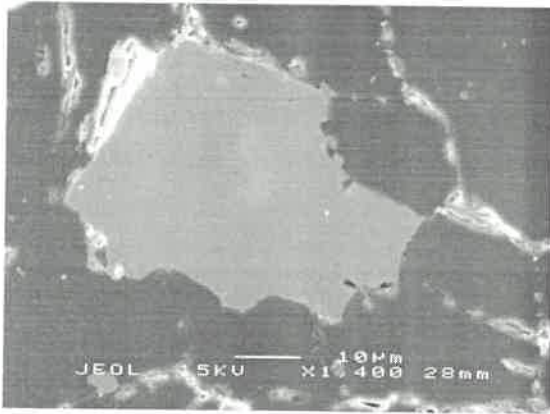


B3451s

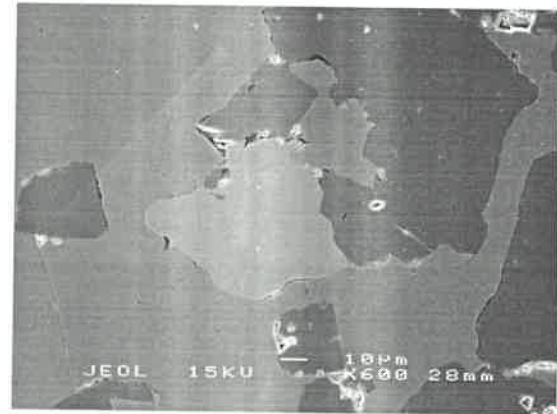


Reimage

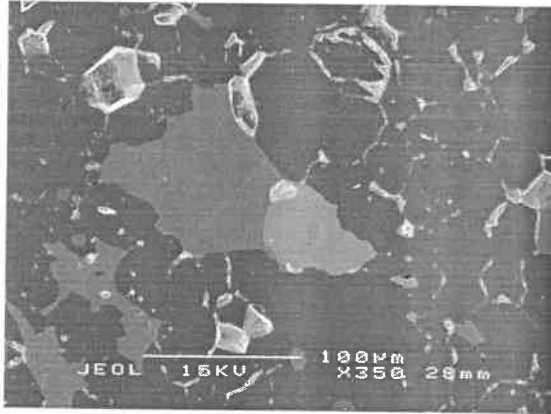
B3481s



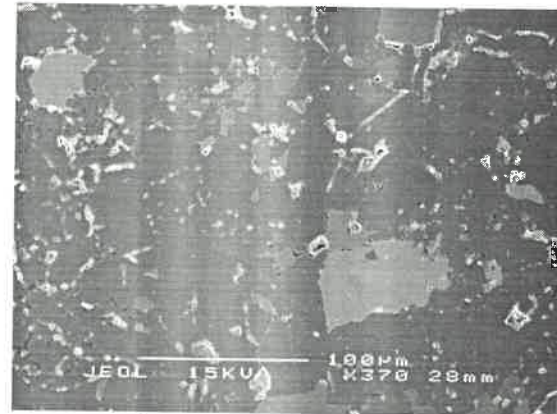
B3473s



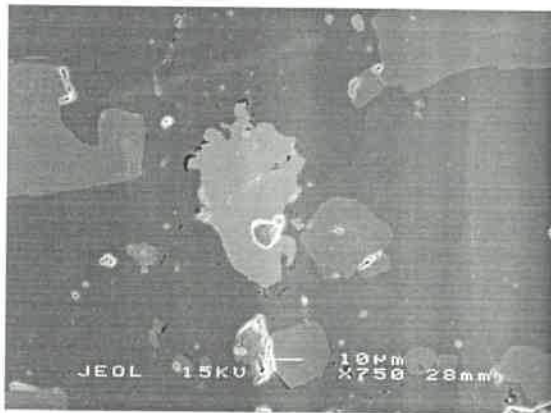
B3474s



B3472s



B3462s

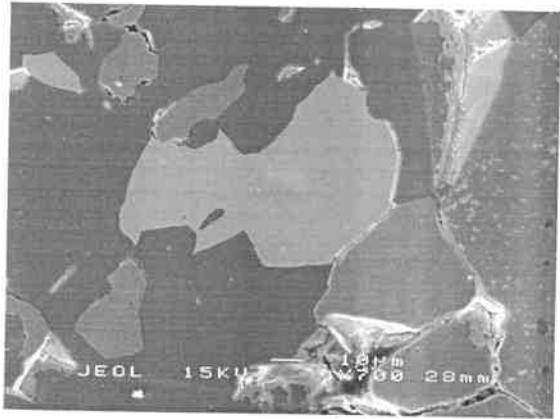


B3452s

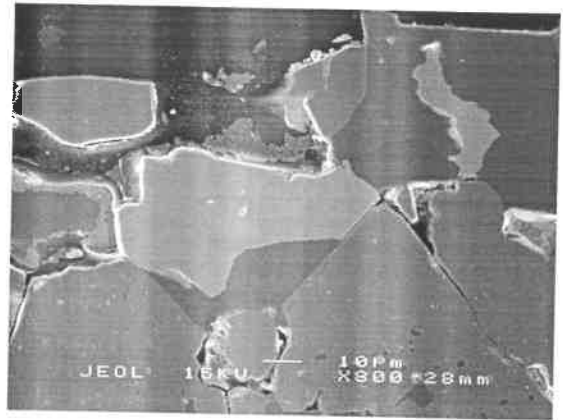


*After shaking
the toner!!
AKA!! So you can
see a little
better*

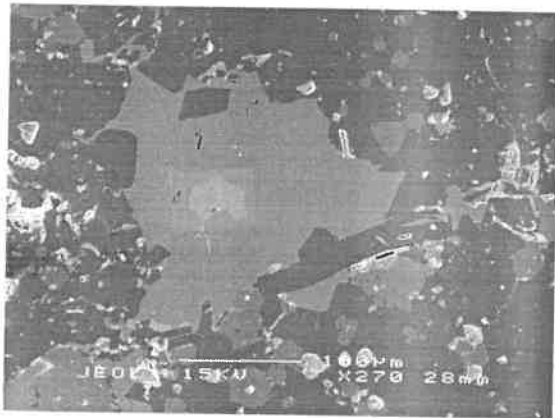
B3442s



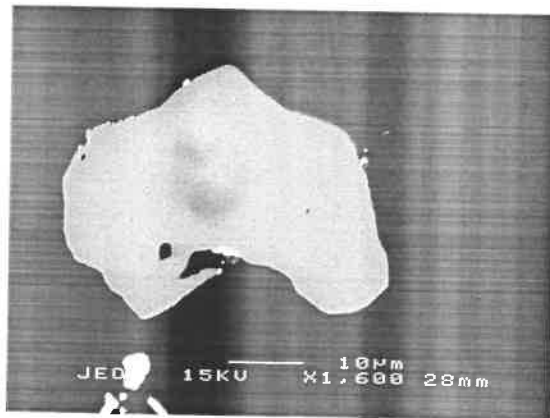
B3441s



B3453s



B3453s

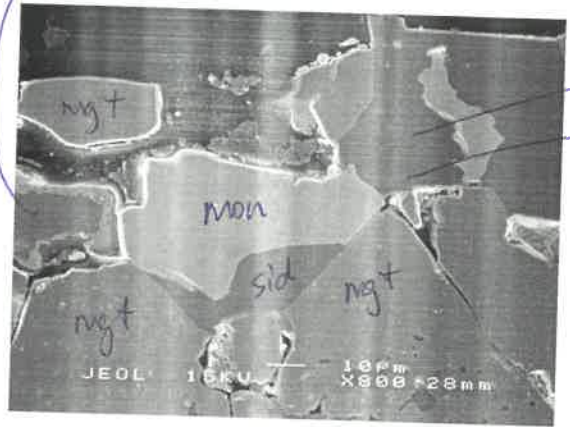


re-image



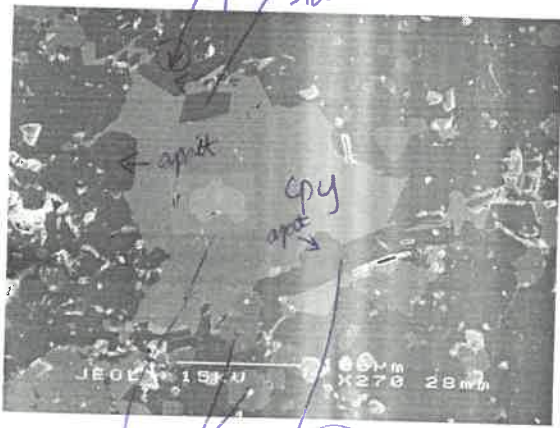
B3442s

2592 ± 10
103% conc



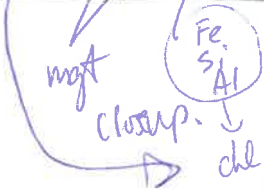
B3441s

2572 ± 21
103% conc

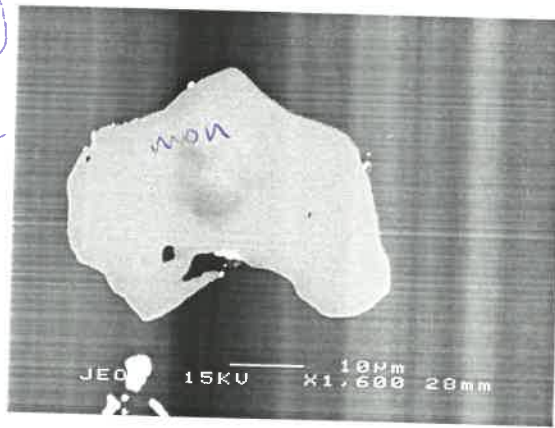


B3453s

2561 ± 18
106% conc



B3453s



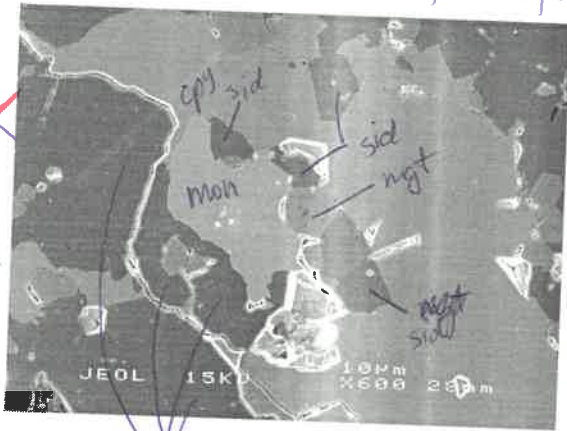
26-4
36-4

Already in document /reimage

Already in document /reimage

B3444s

~~2576 ± 17~~
2576 ± 17
107%



B3451s

U. discorda
29% dwt

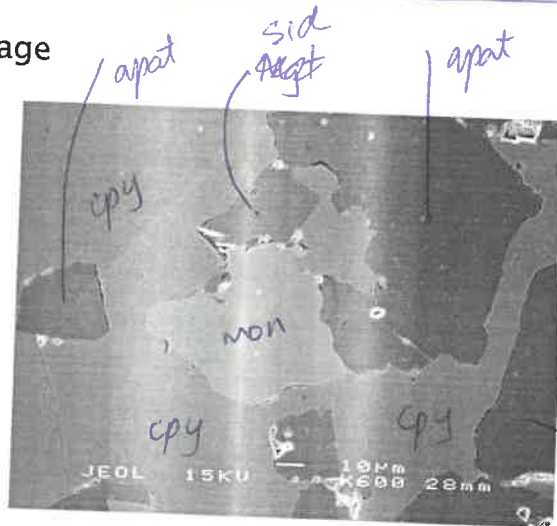
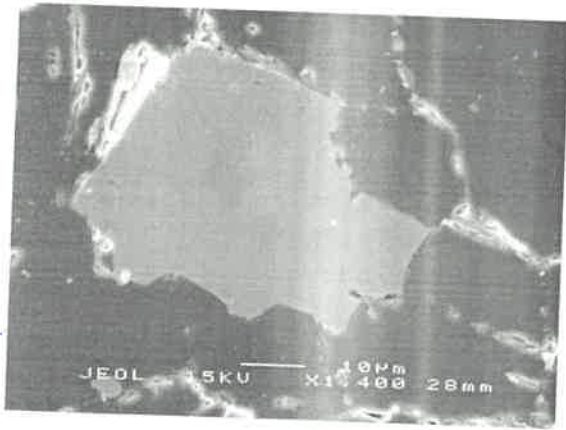


apat

Reimage

B3481s

2542 ± 20
111% conc



X = 273
Y = 518

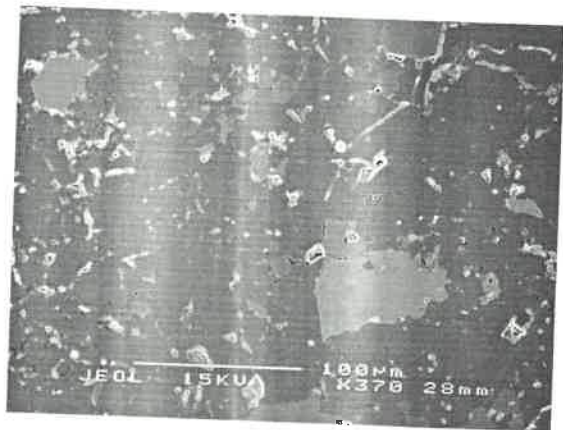
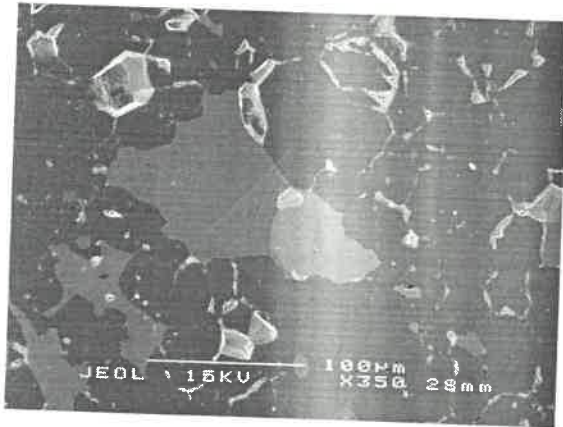


B3473s

2600 ± 33
104% conc
apat

B3474s

2580 ± 21
109%

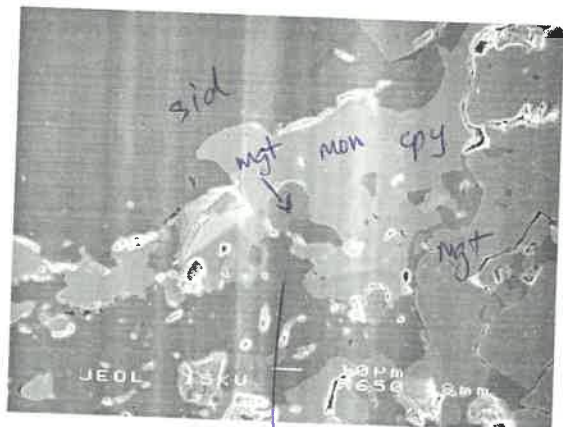
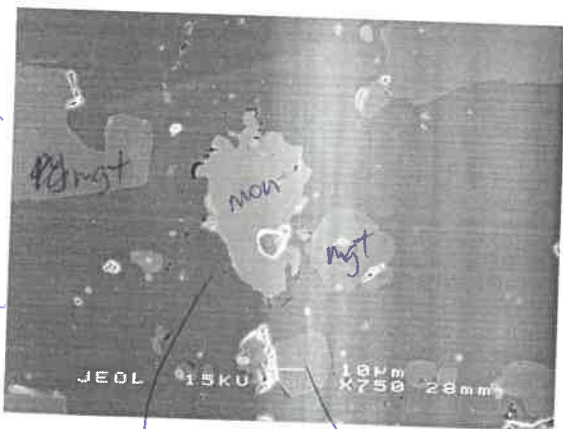


B3472s

2557 ± 19
109%

B3462s

2564 ± 24
105% conc



B3452s

2555 ± 17
104%

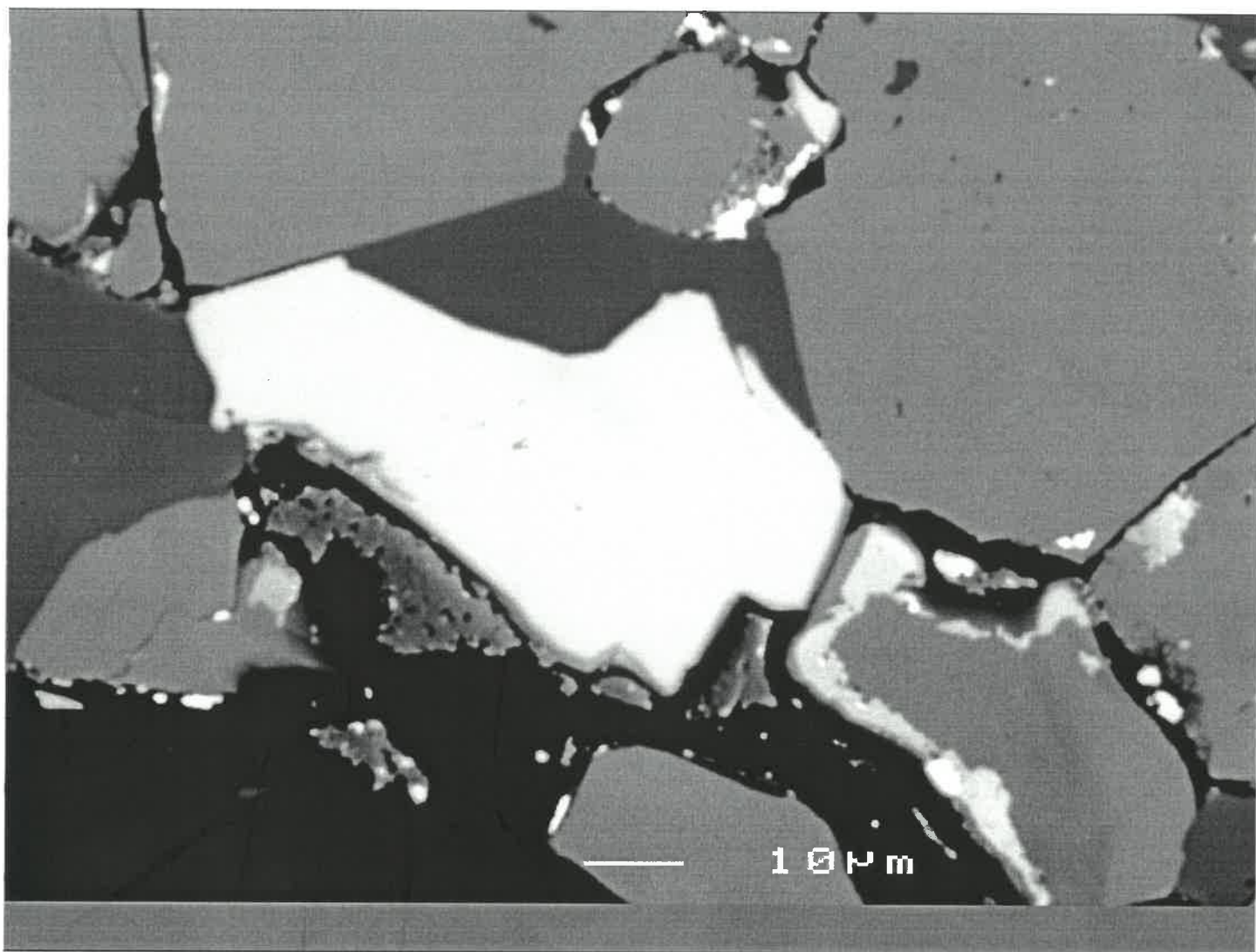
~~sid?~~ sid? ngt
Fe Mn Mg

sid

B34

~~8~~

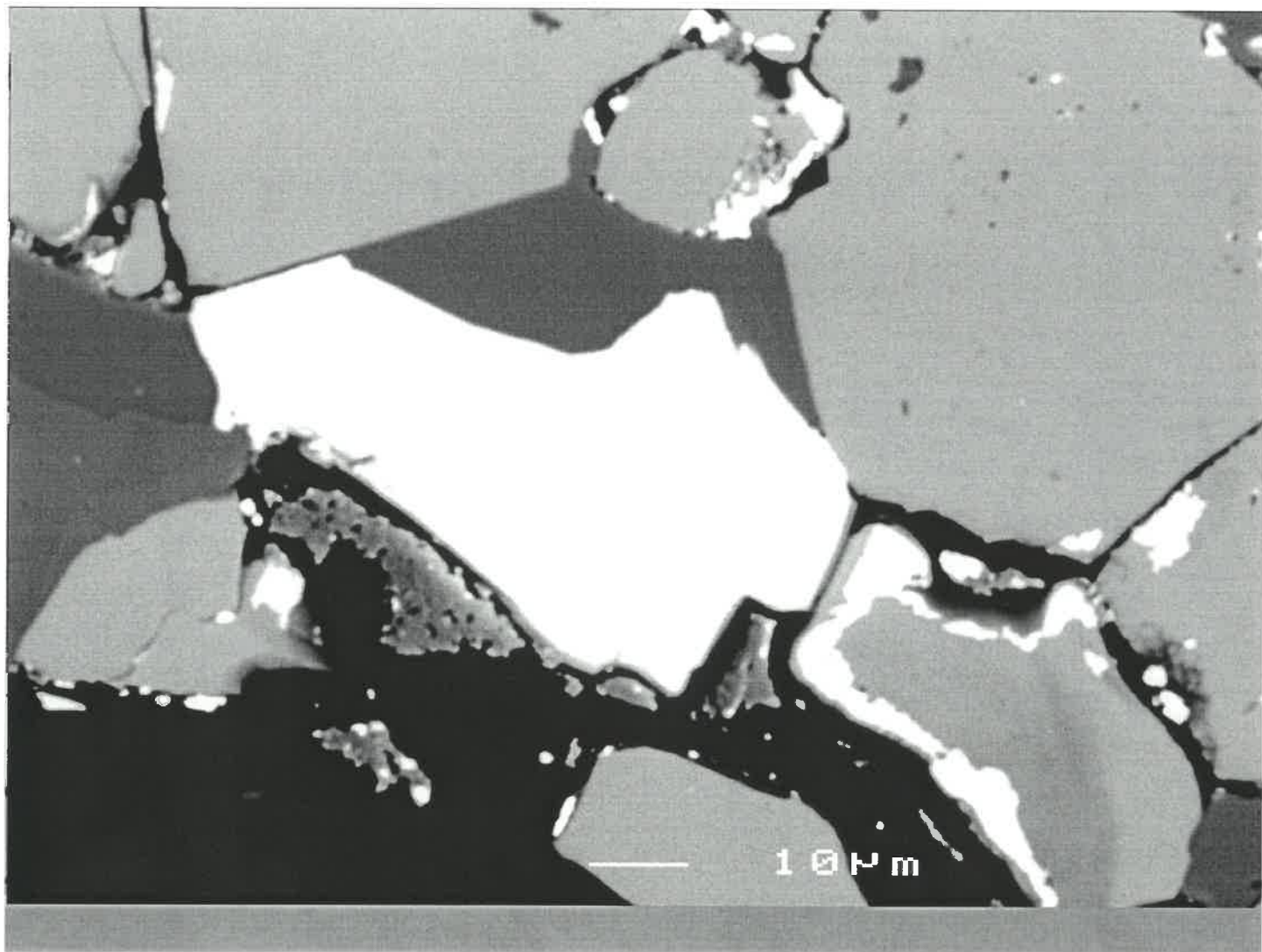
41B1



B34

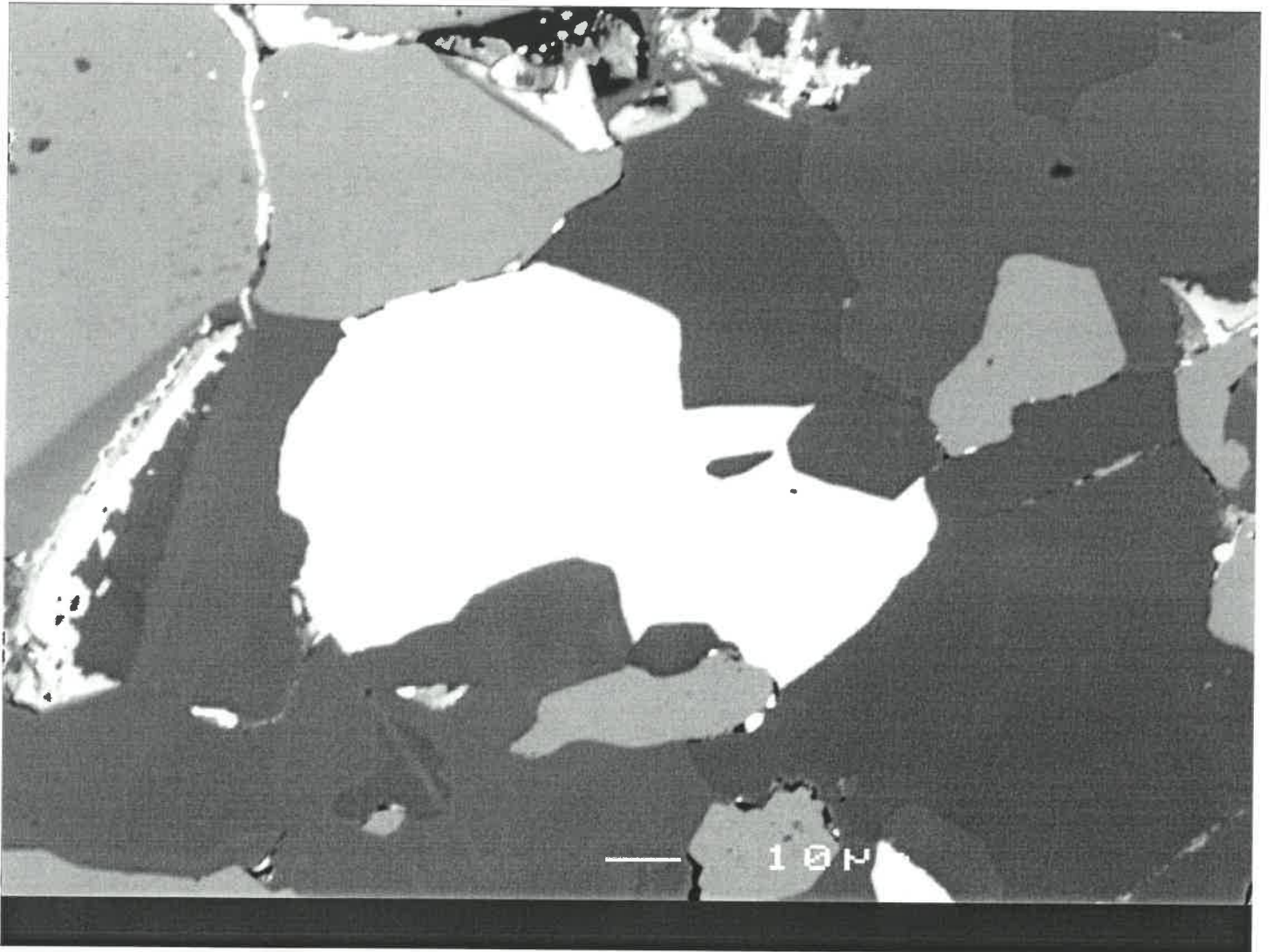
~~8~~

41B2

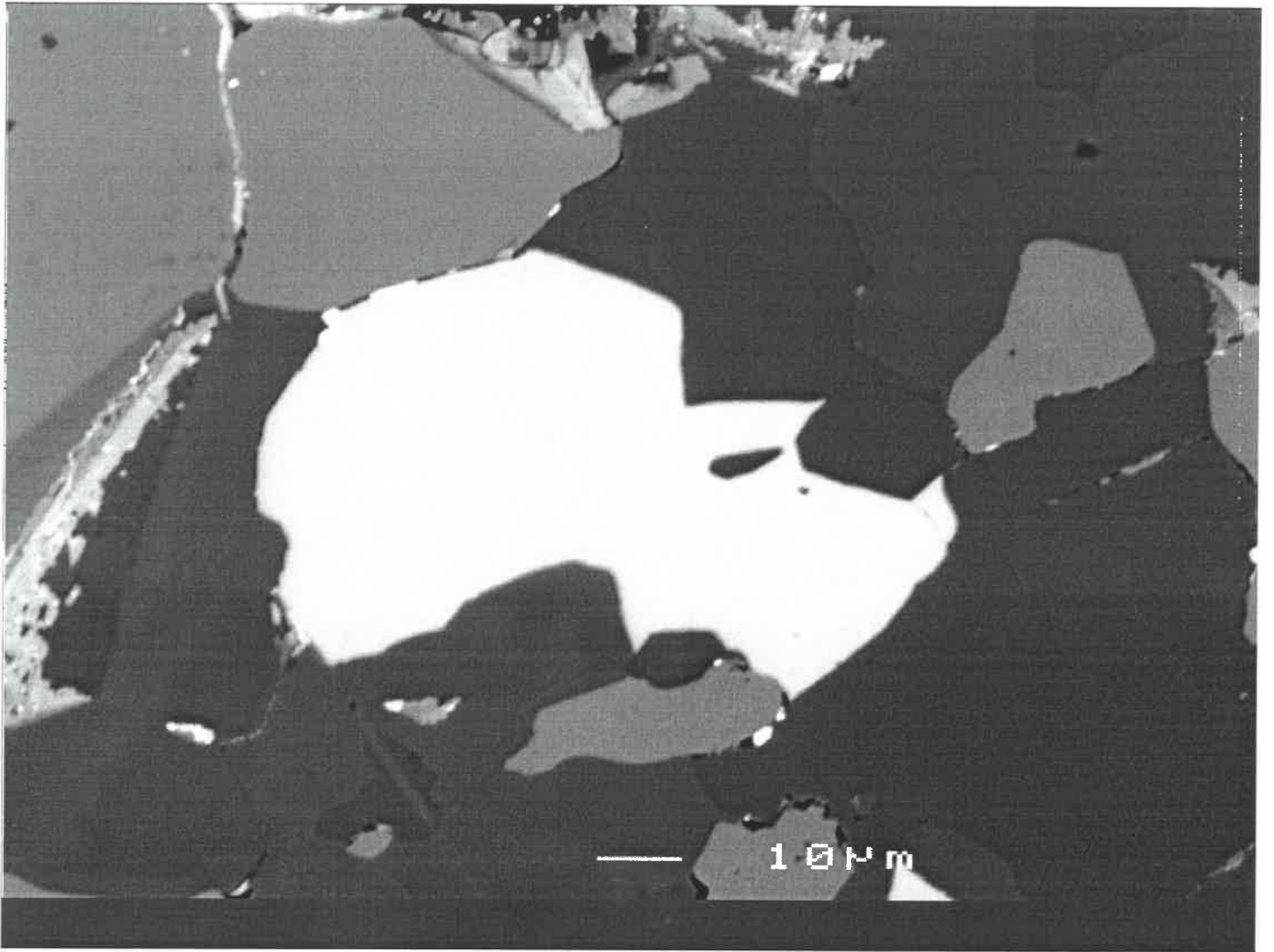


B34

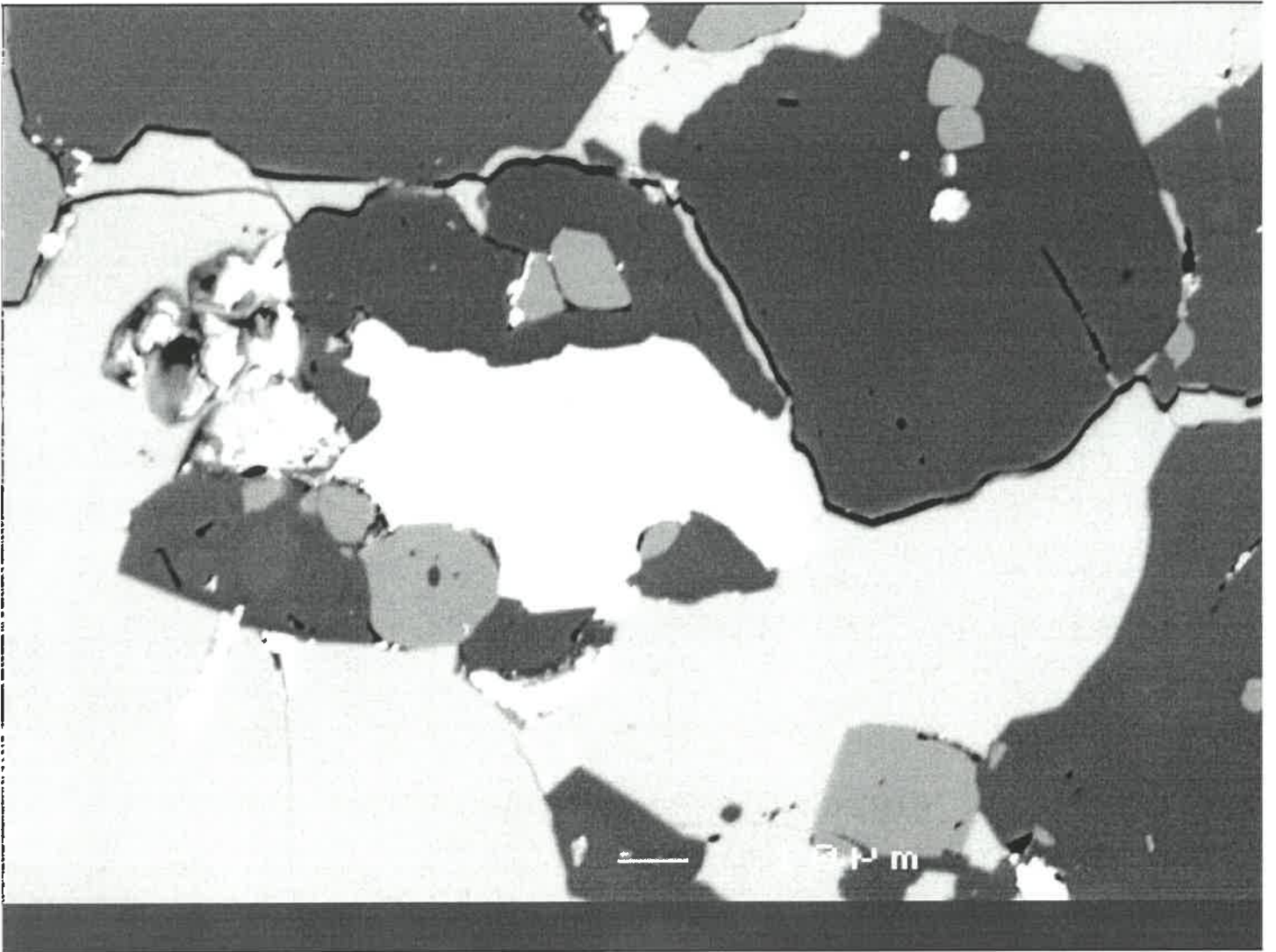
42B1



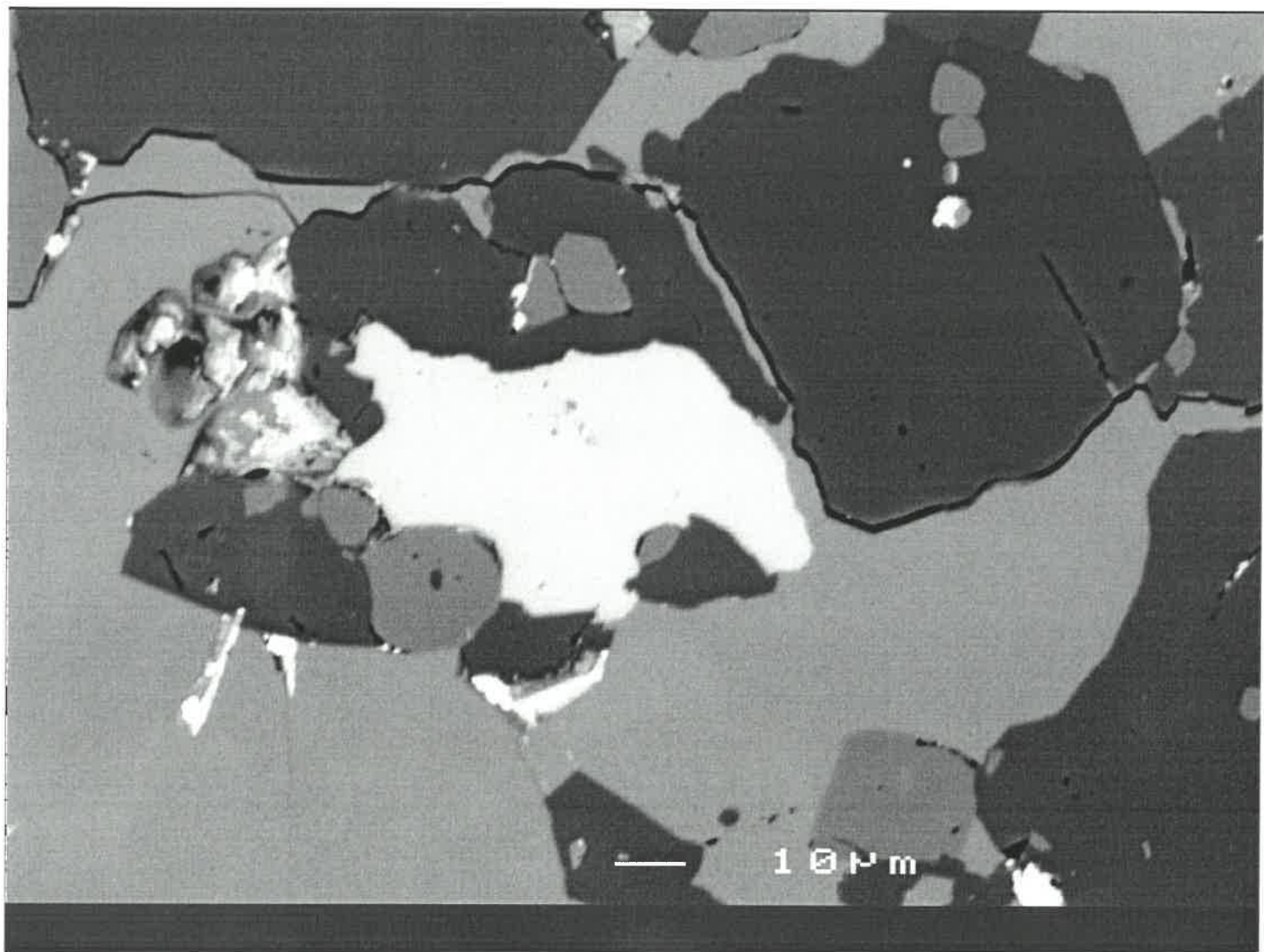
B34
42B2



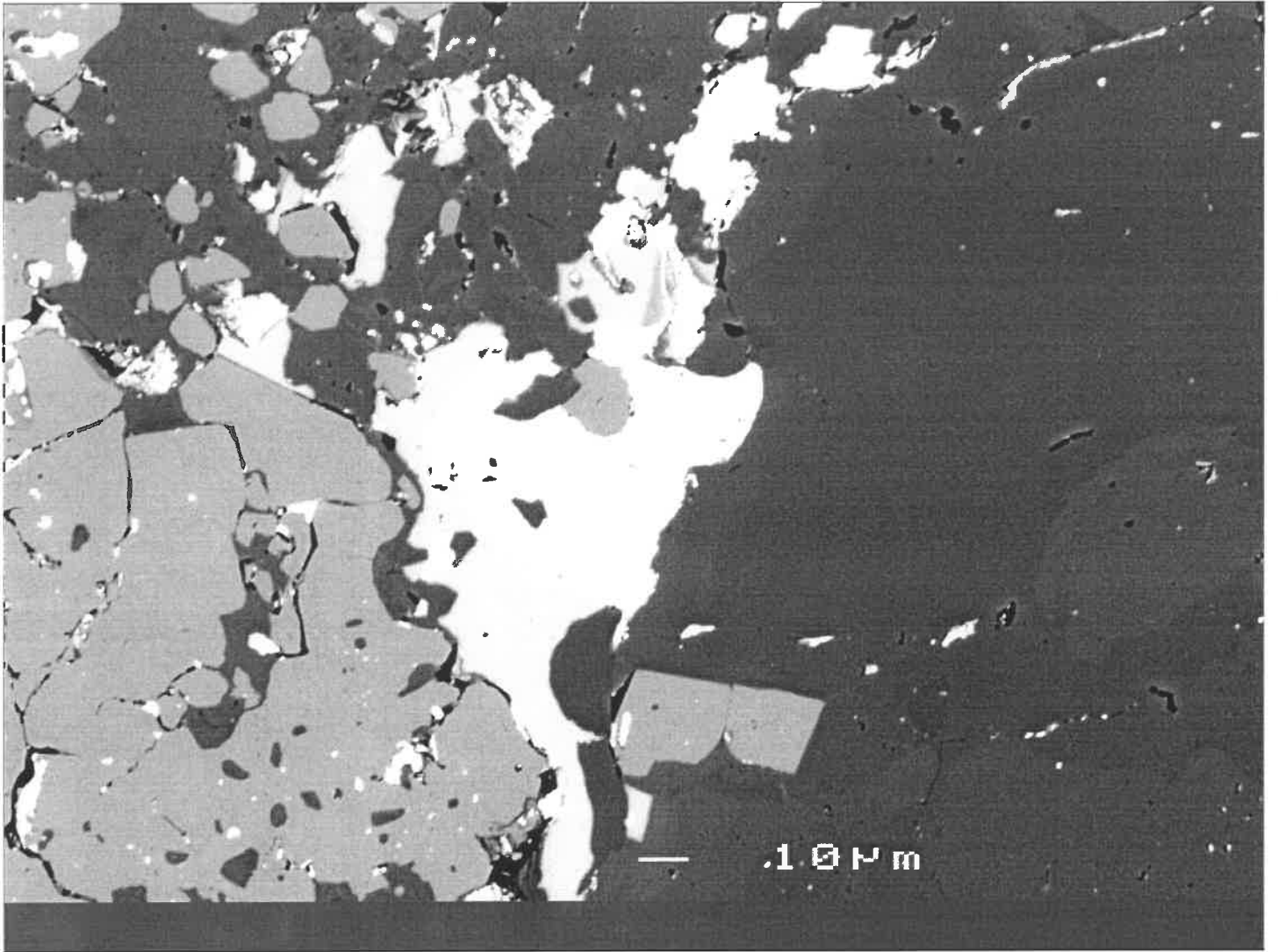
B34
44B1



B34
44B2

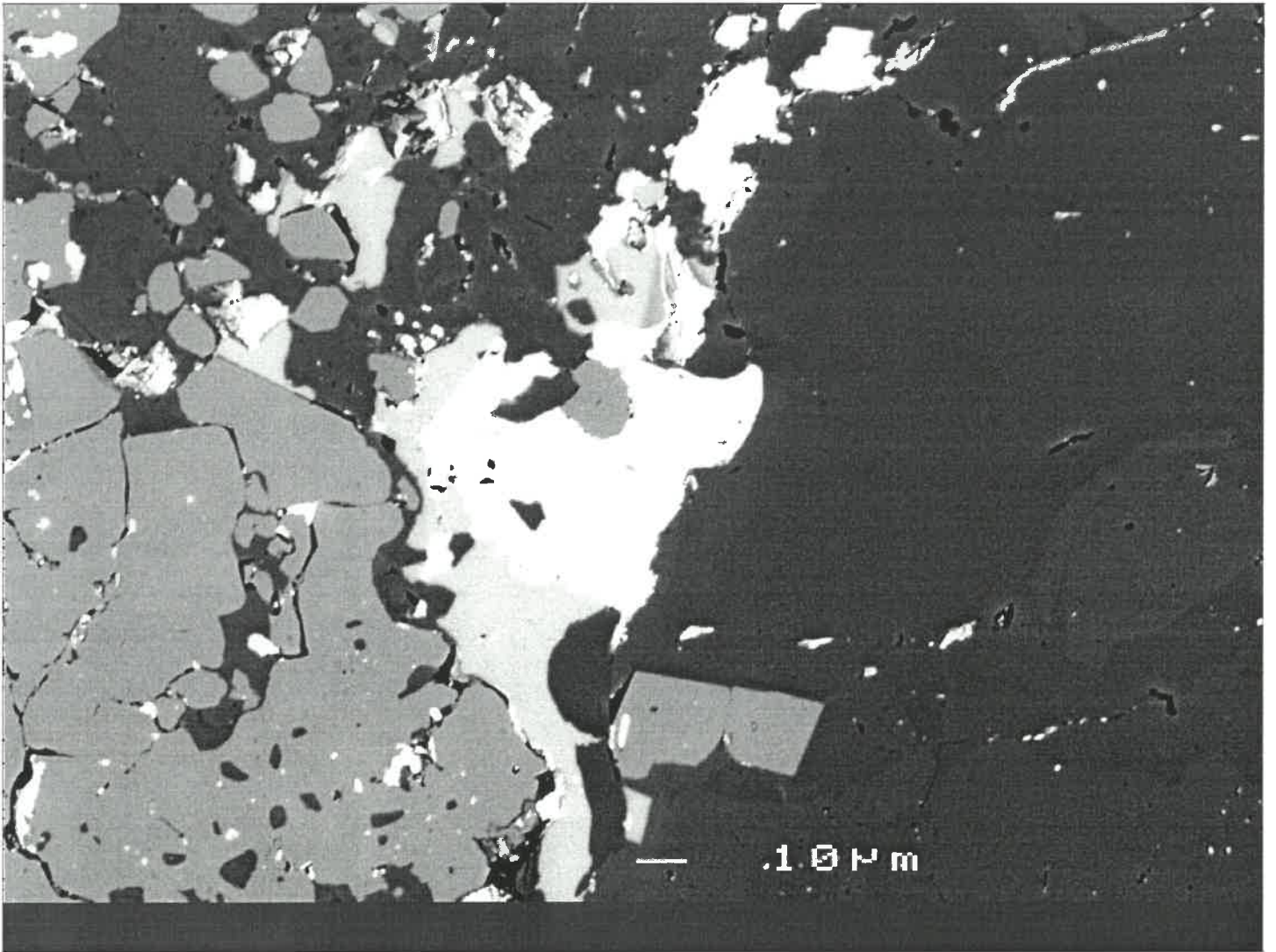


B34
52B1

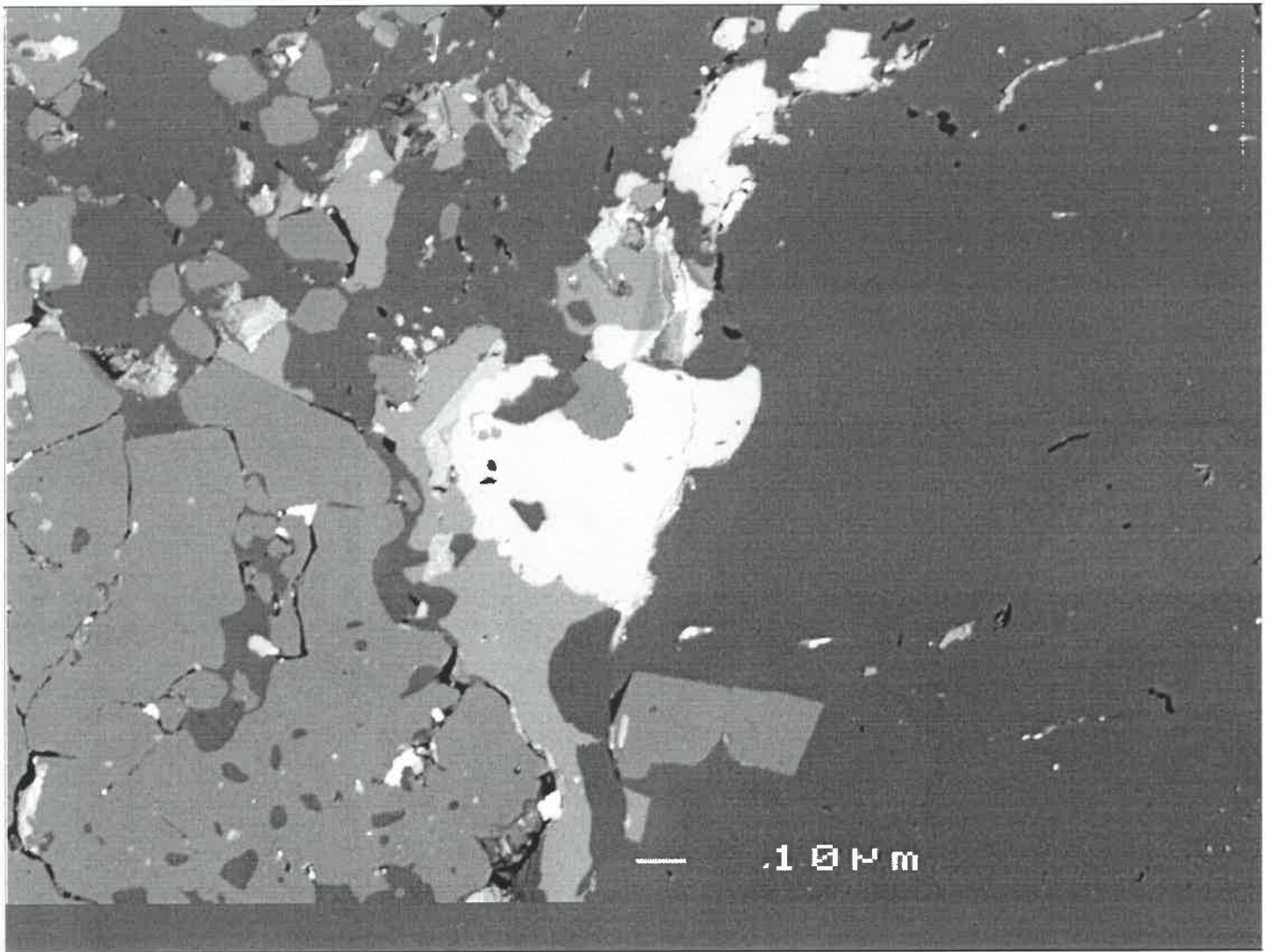


B34

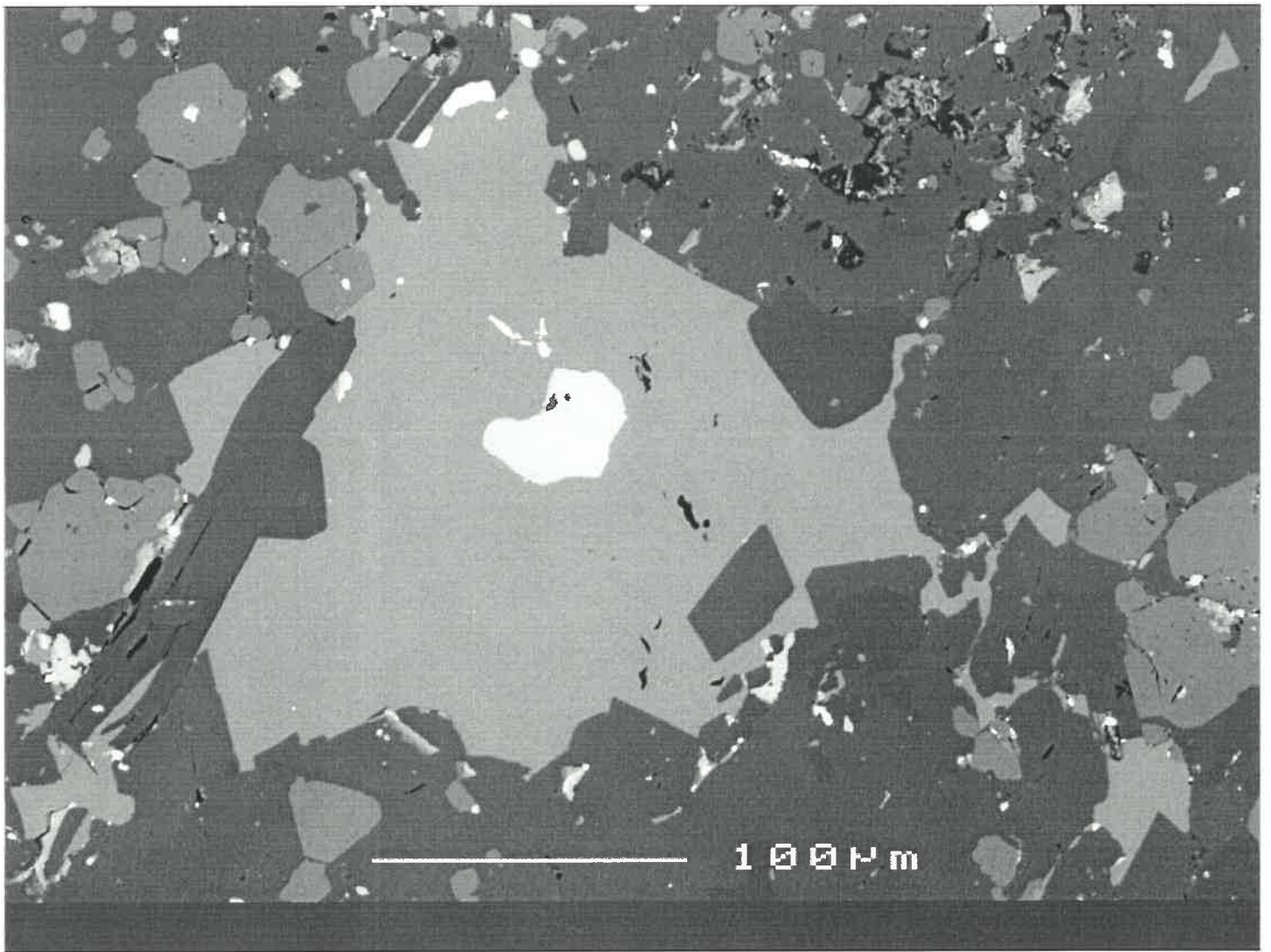
52B2



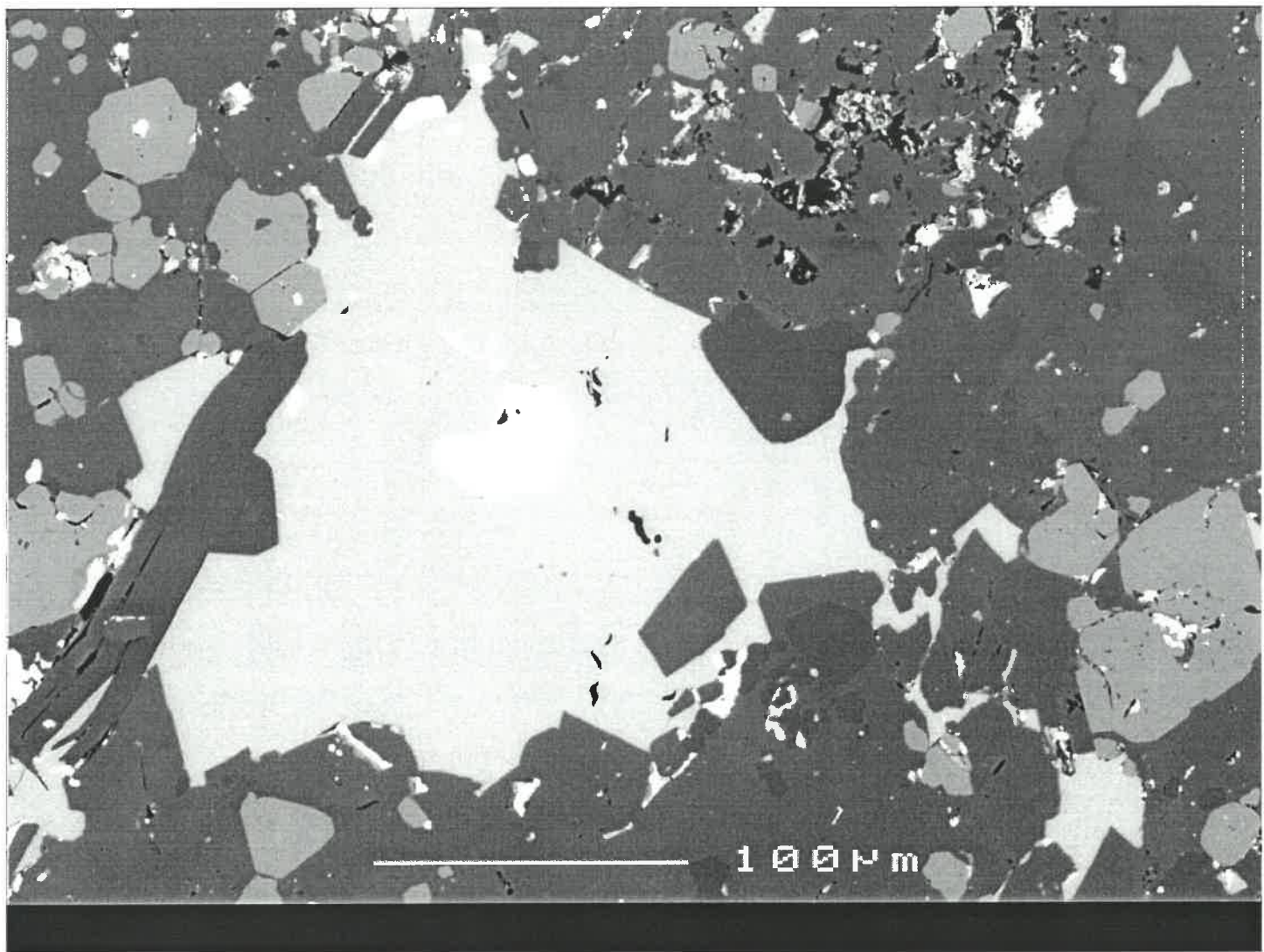
B34
5283



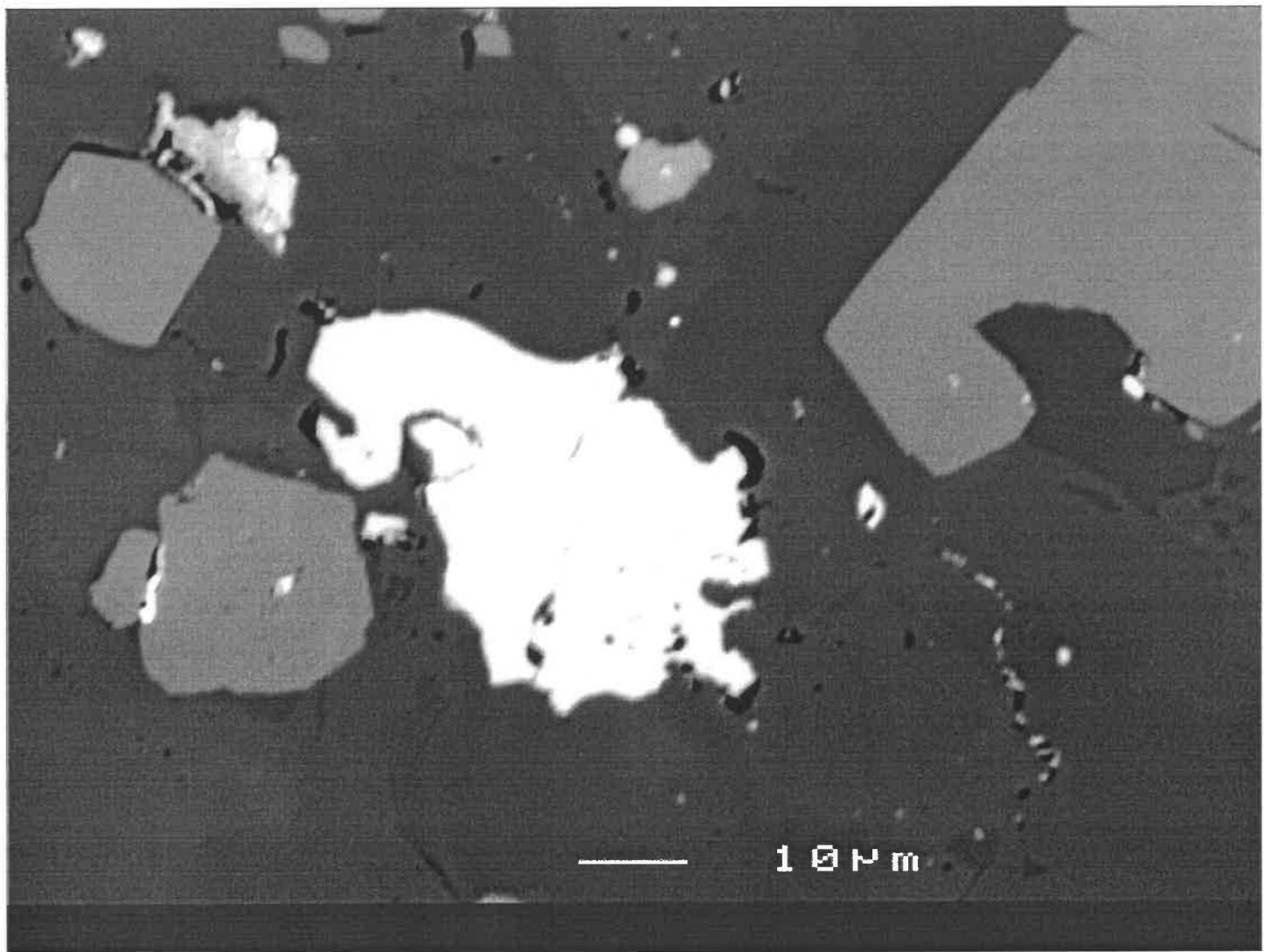
B34
53B1



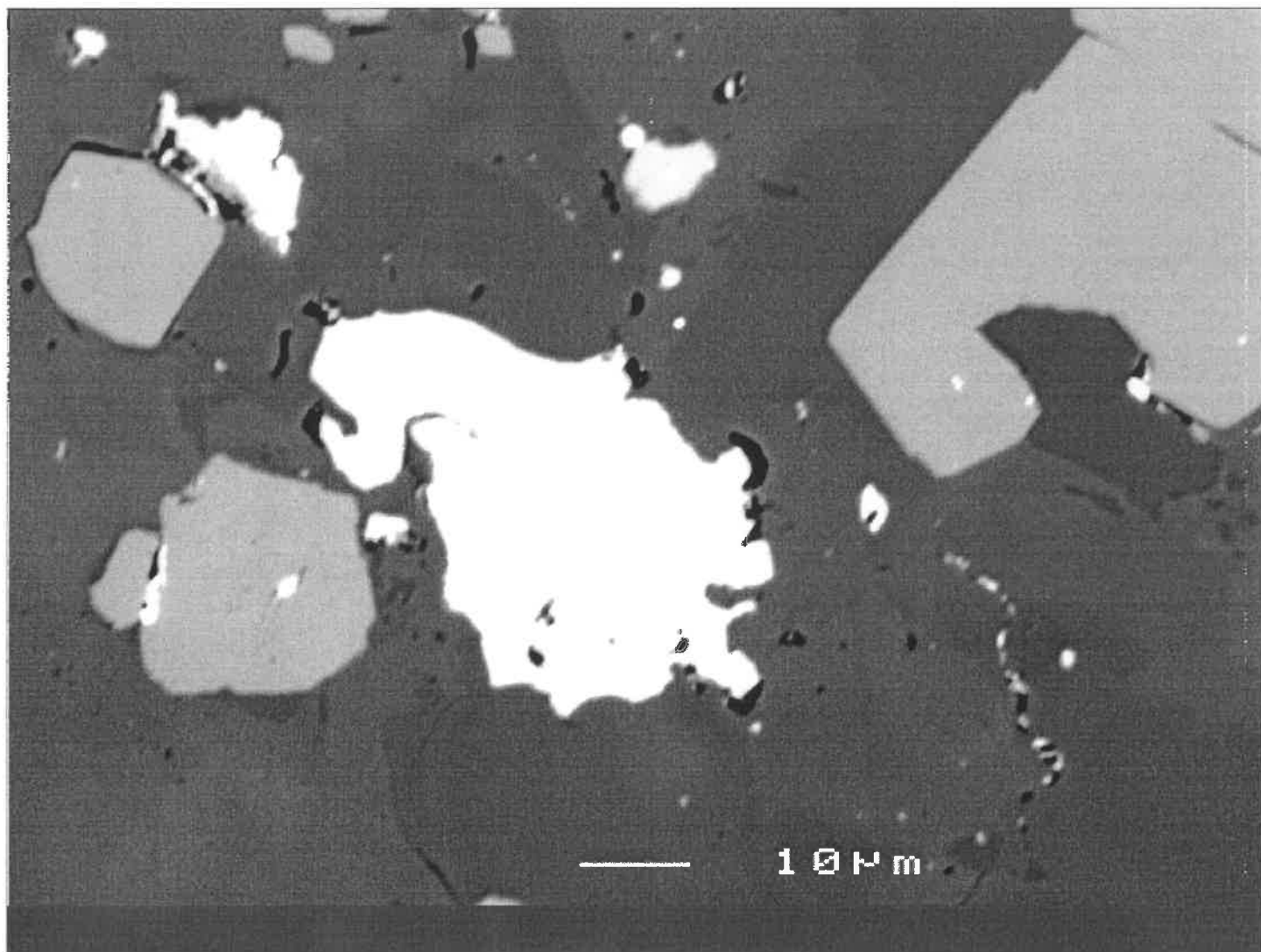
B34
S3B2



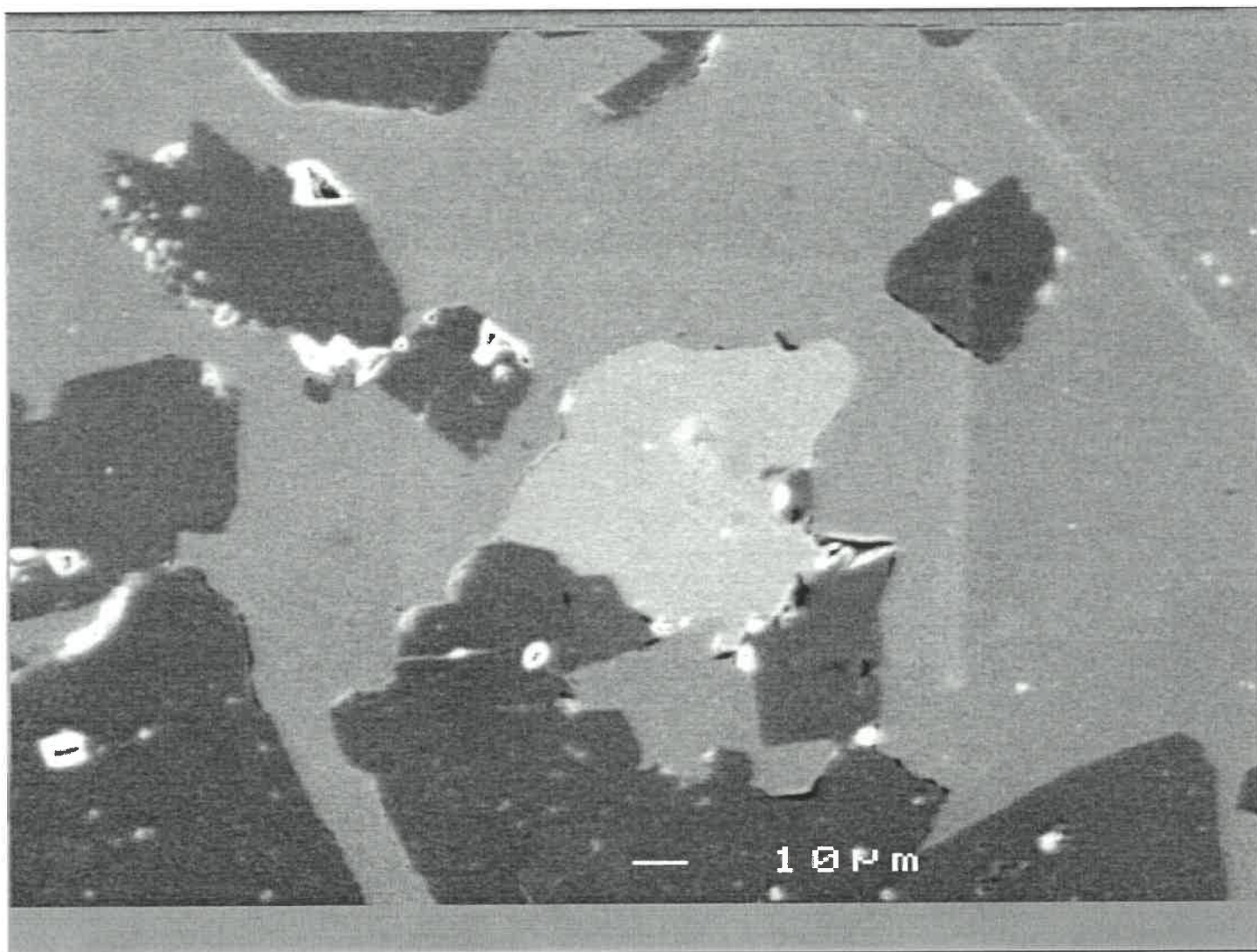
B34
62B1



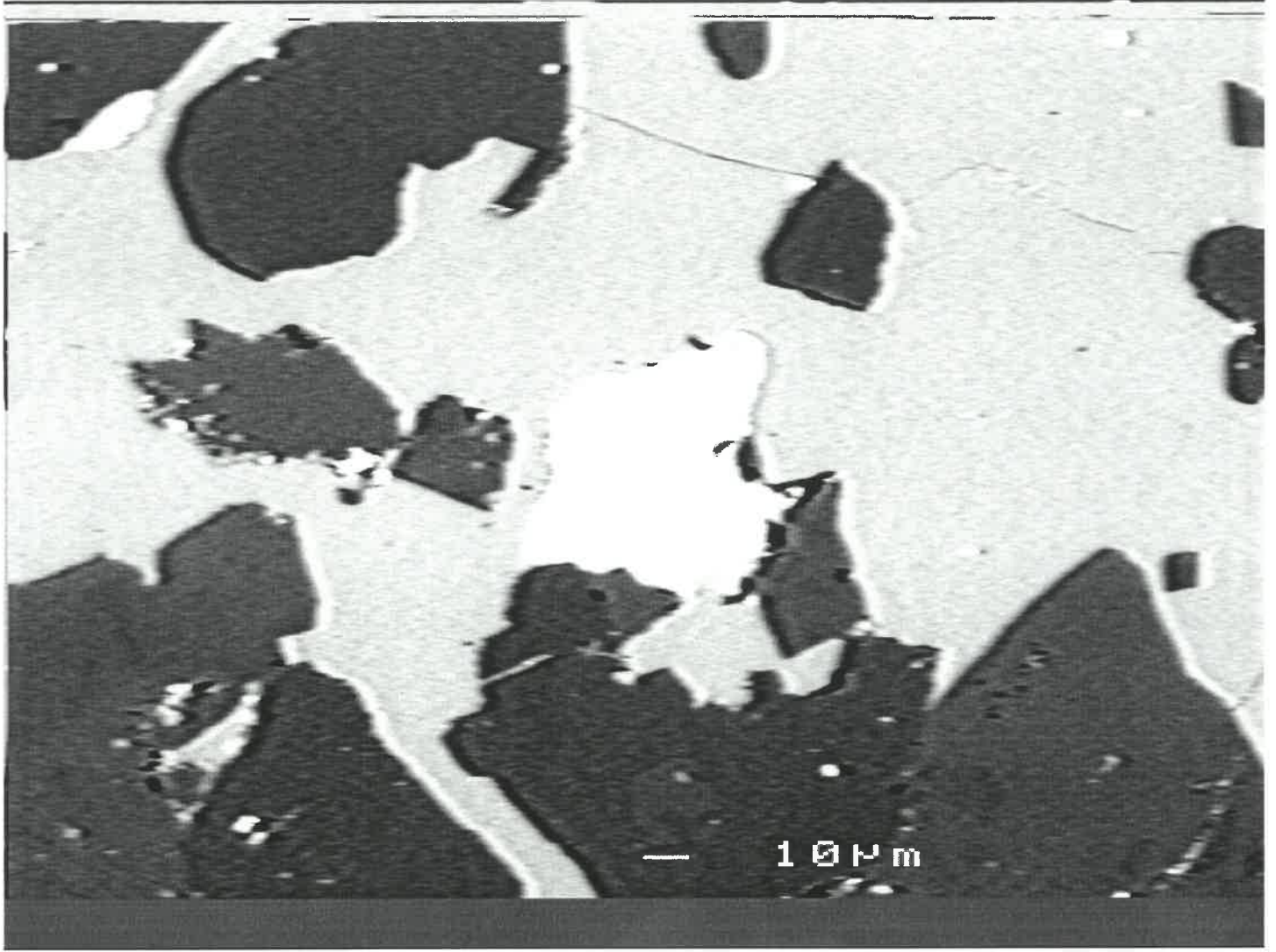
B34
62B2



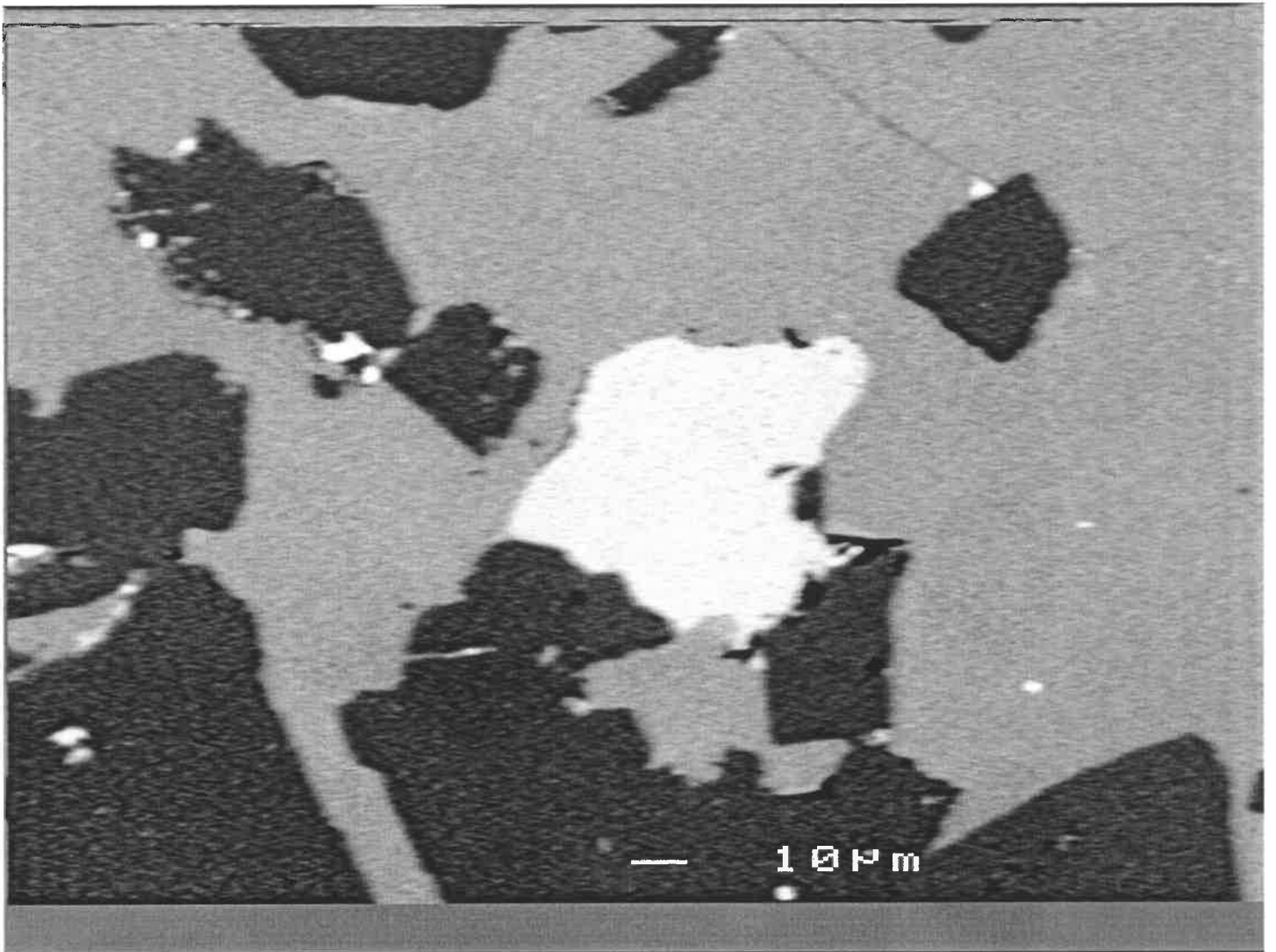
B34
735



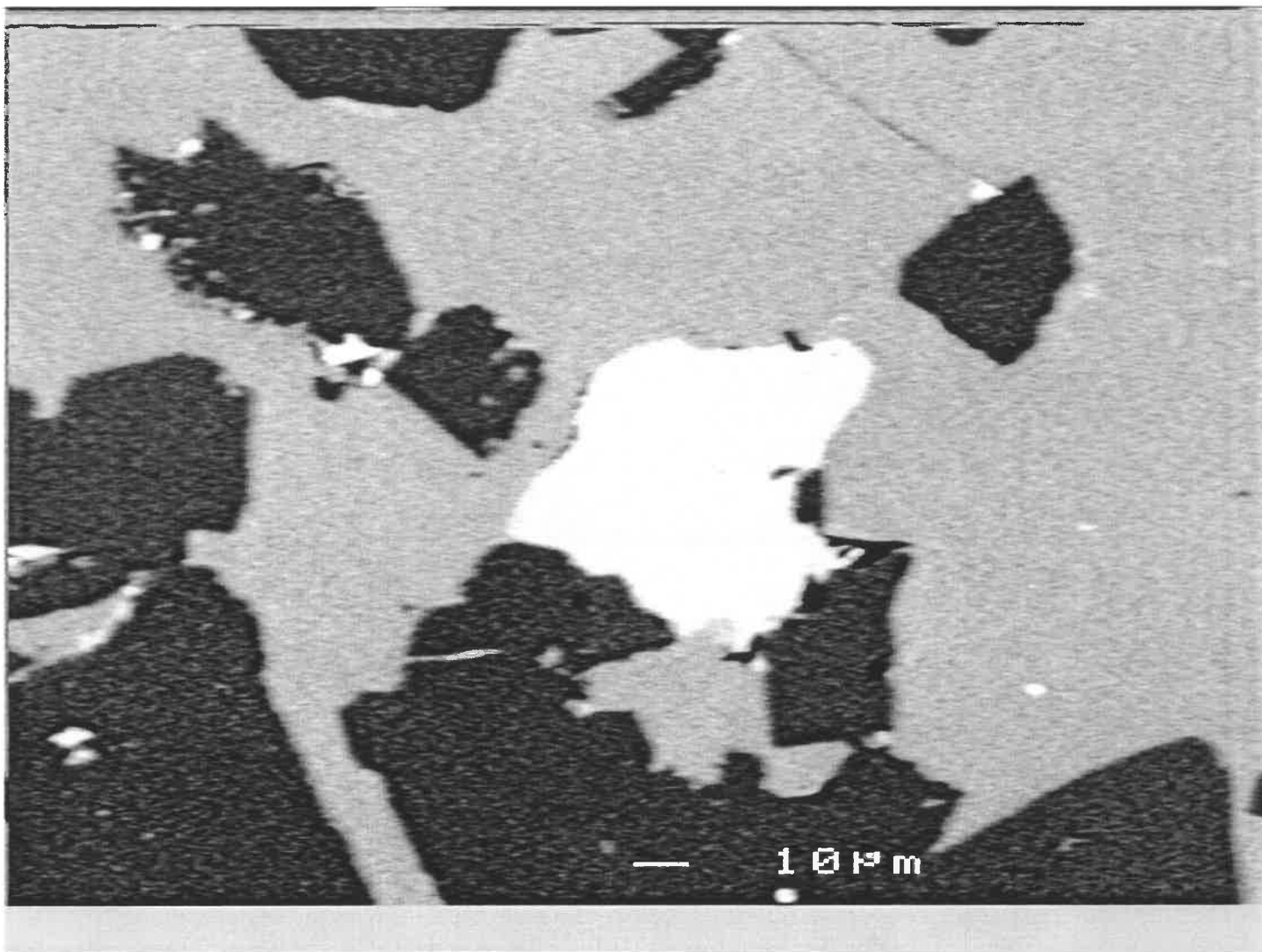
B34
73B



B34
73B1



B34
73B2



B34

~~73B3~~

73B3

