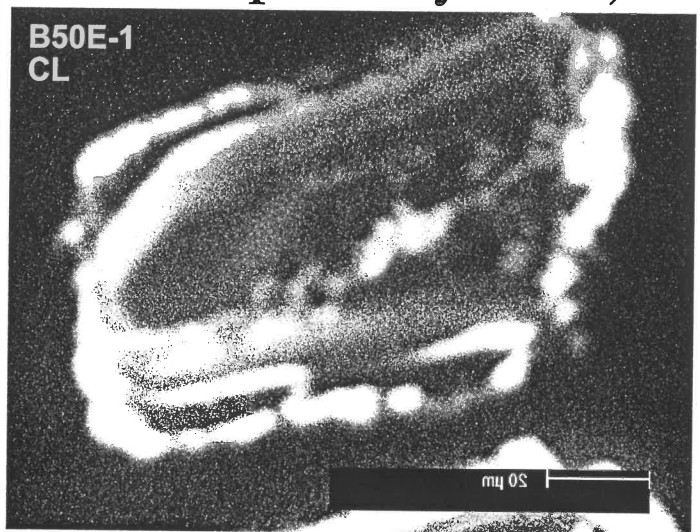
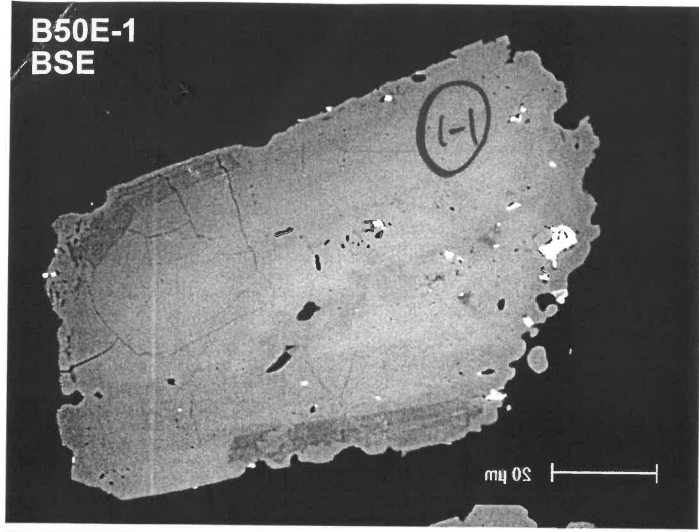


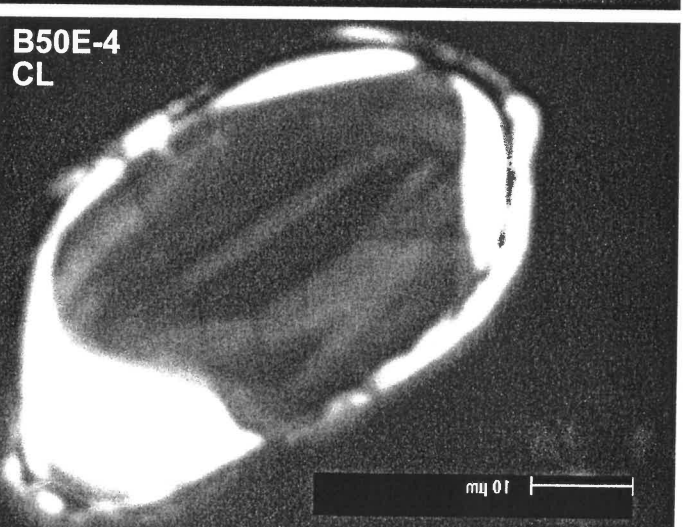
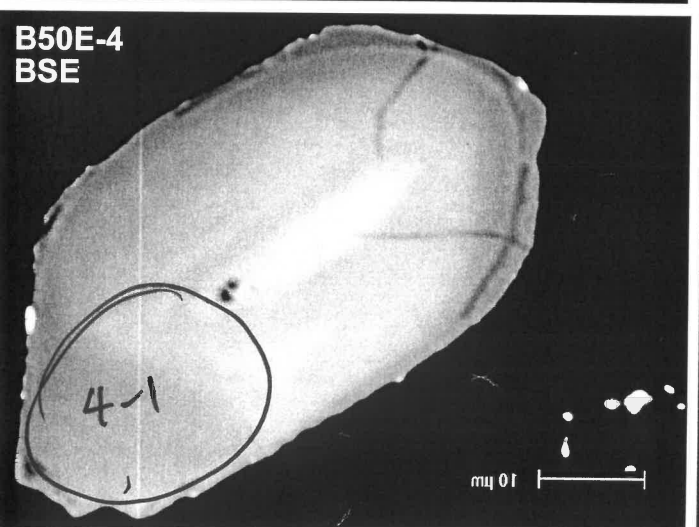
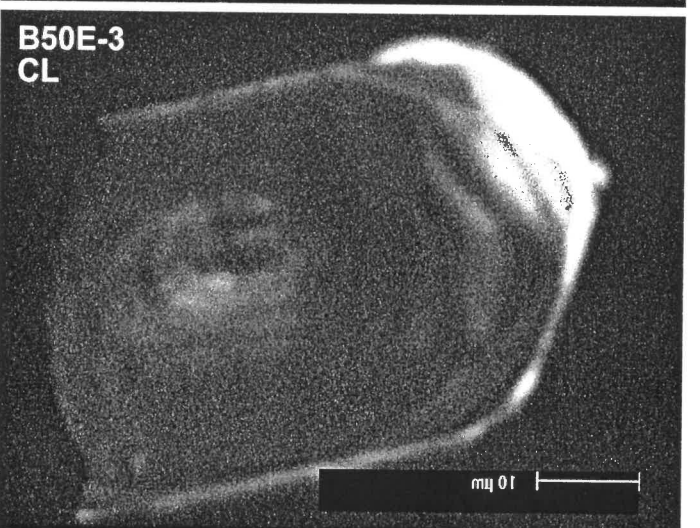
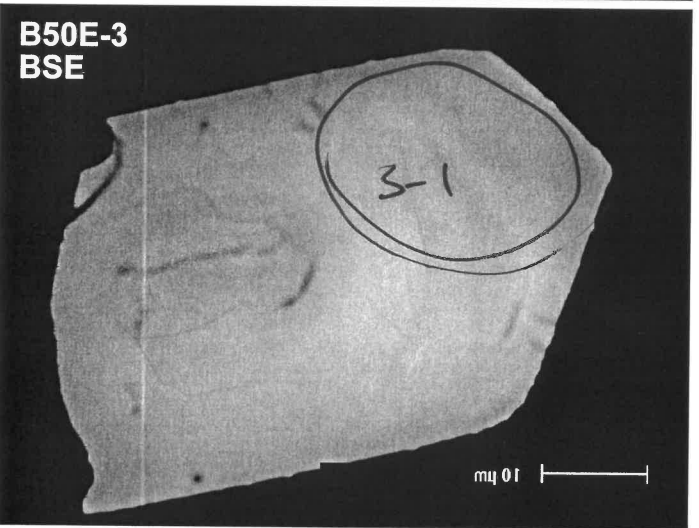
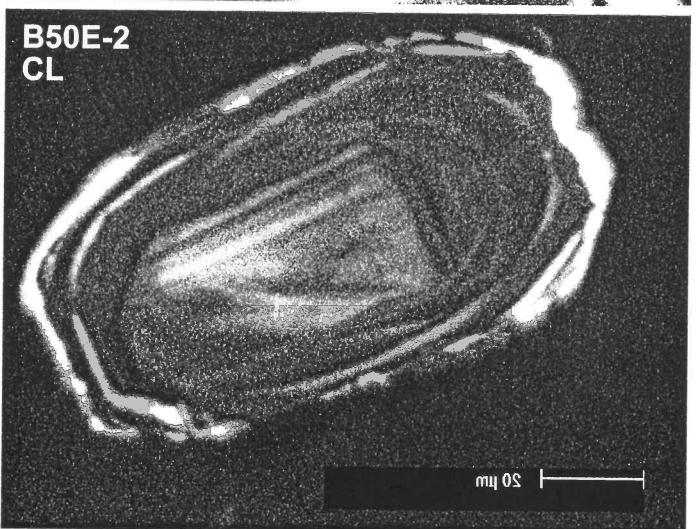
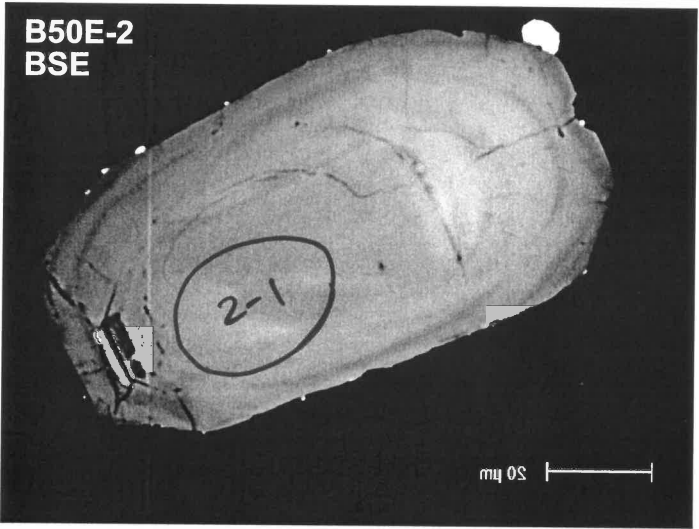
UWA B50 E - D128816 (Plutonic protomylonite)

r1
e

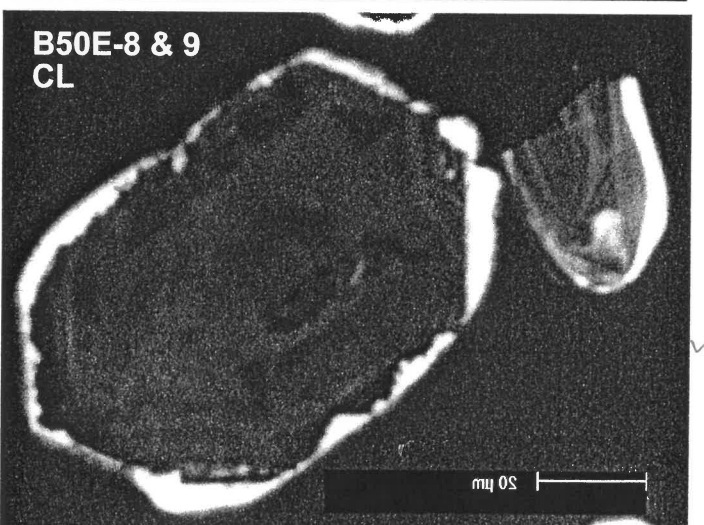
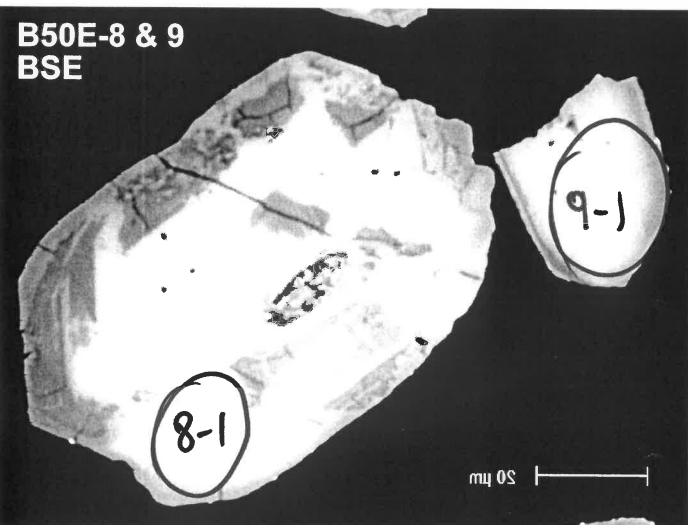
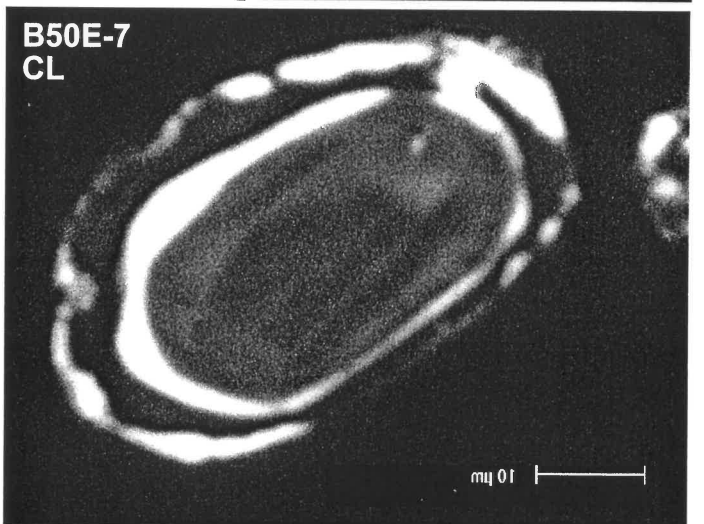
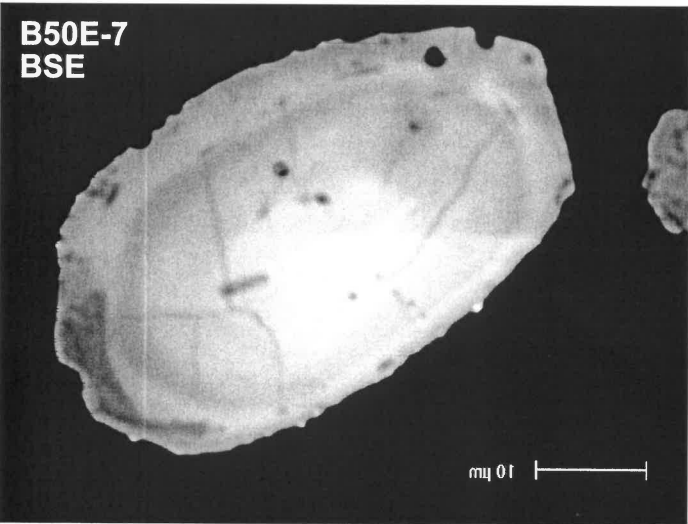
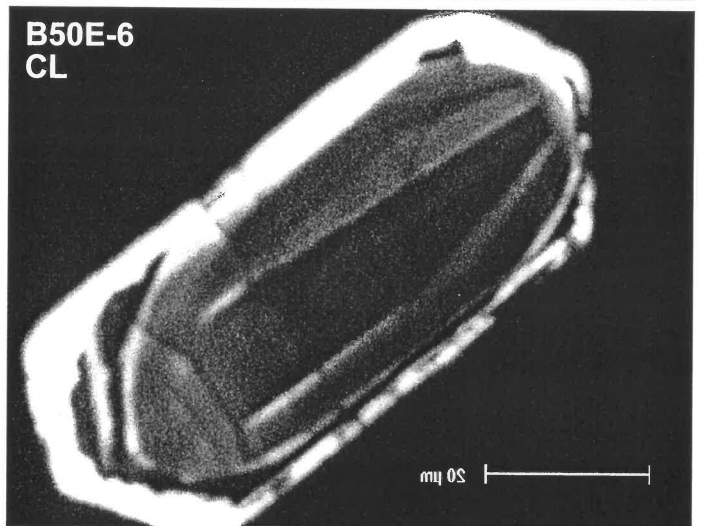
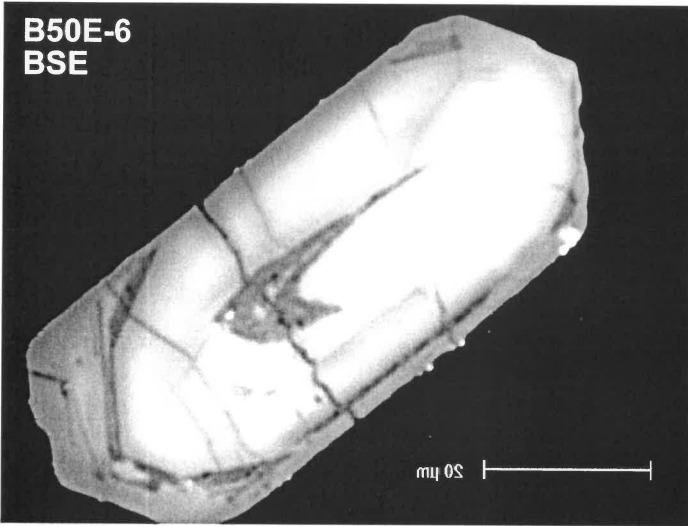
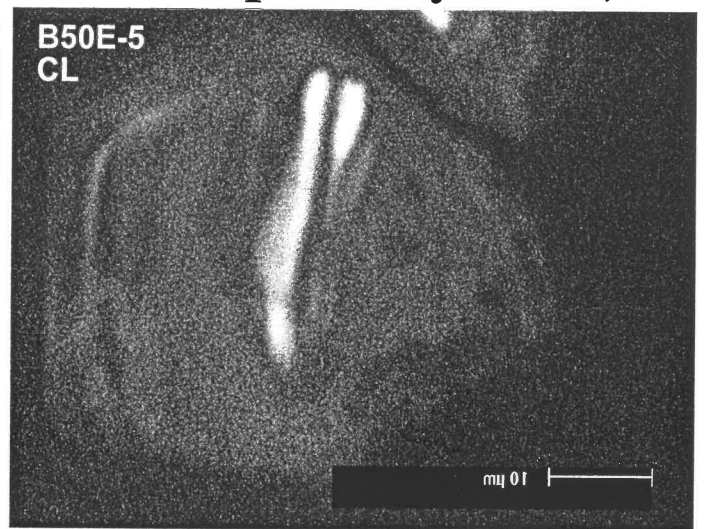
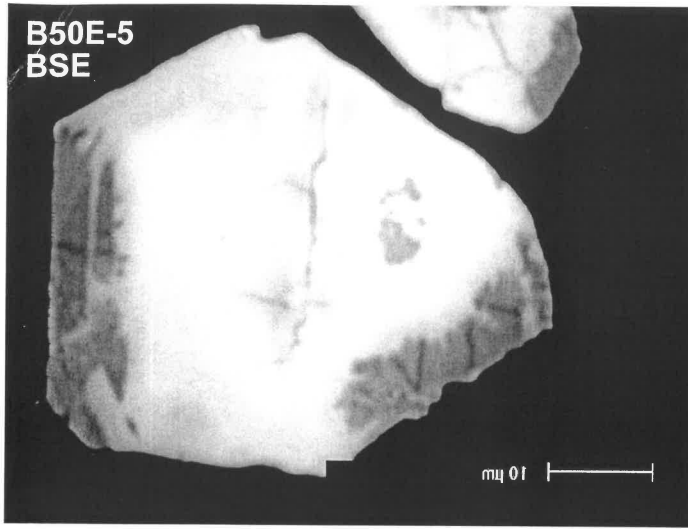
R



C2

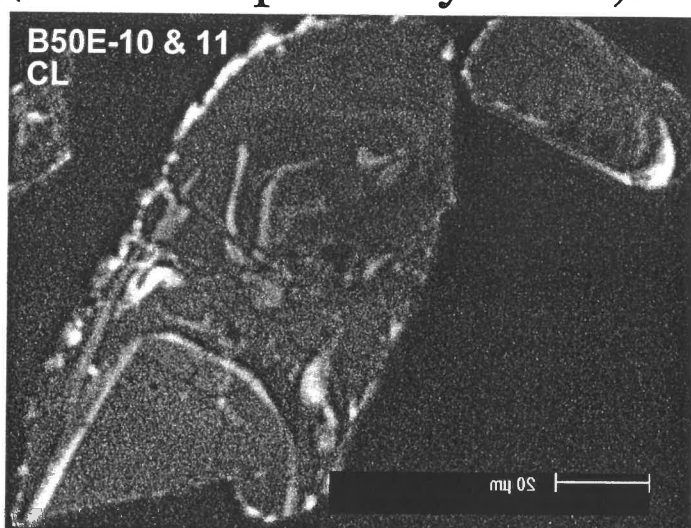
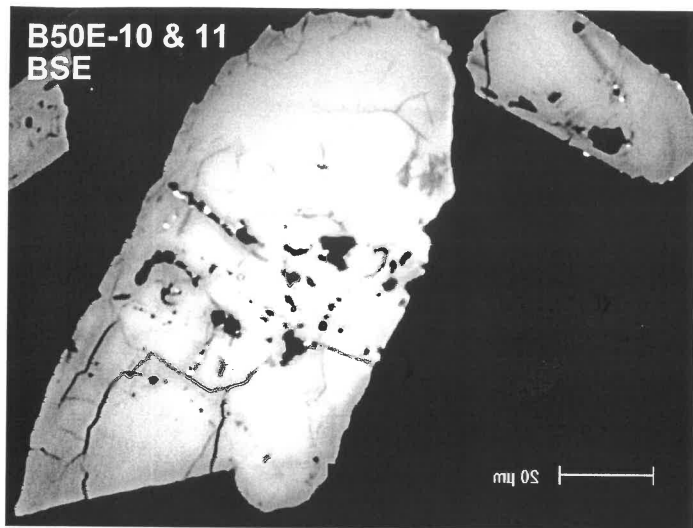


UWA B50 E - D128816 (Plutonic protomylonite)

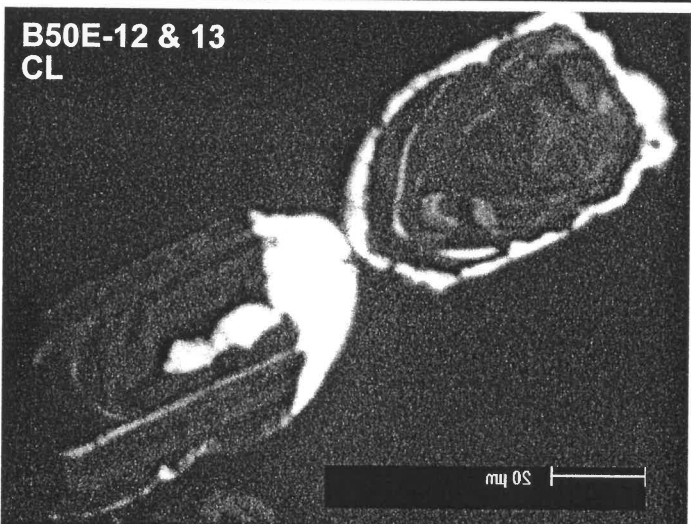
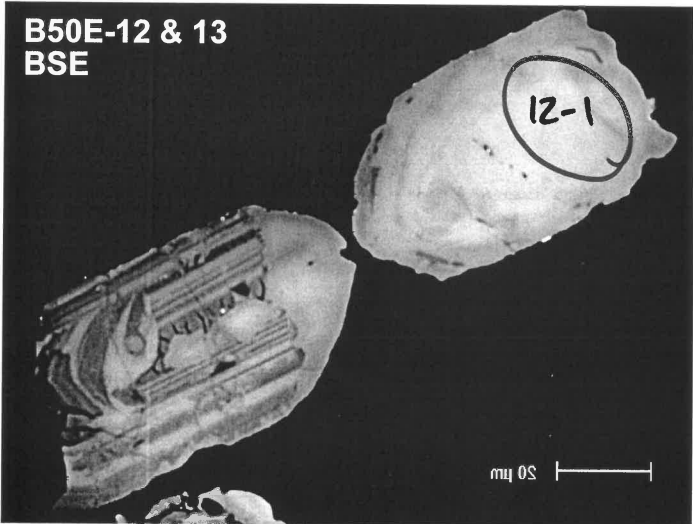


R
?
?
?

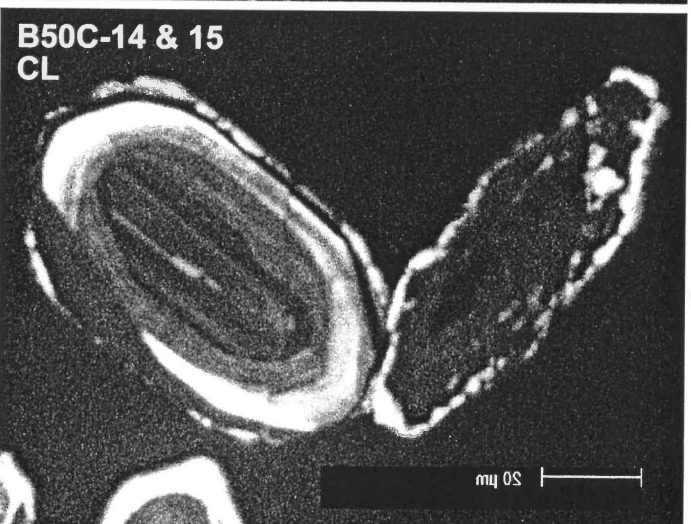
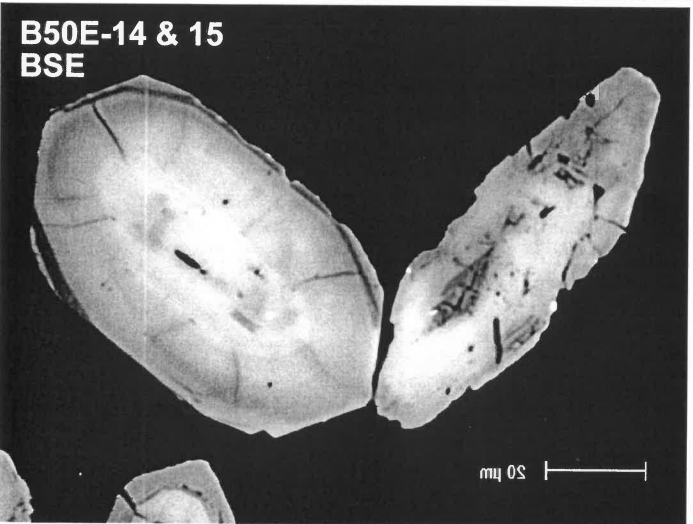
UWA B50 E - D128816 (Plutonic protomylonite)



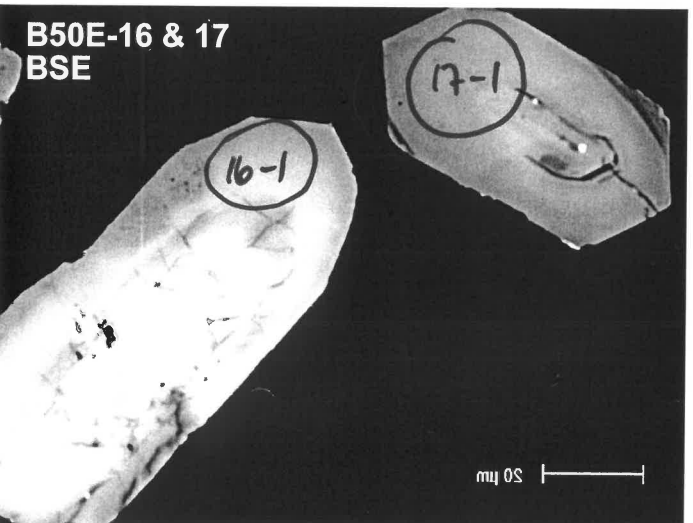
R
✓



✓

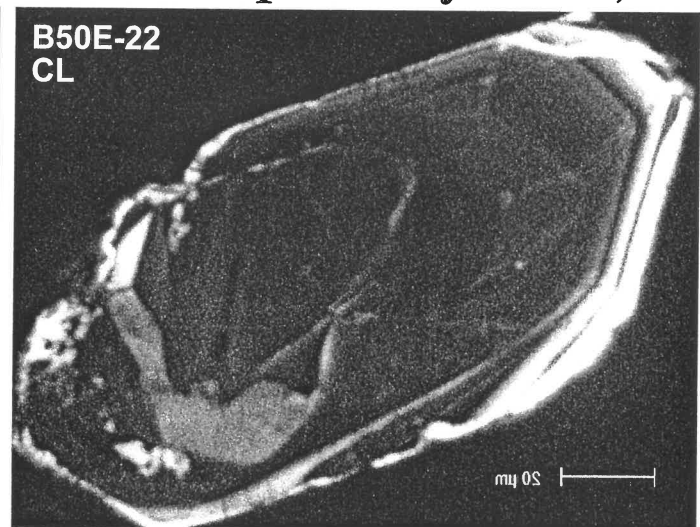
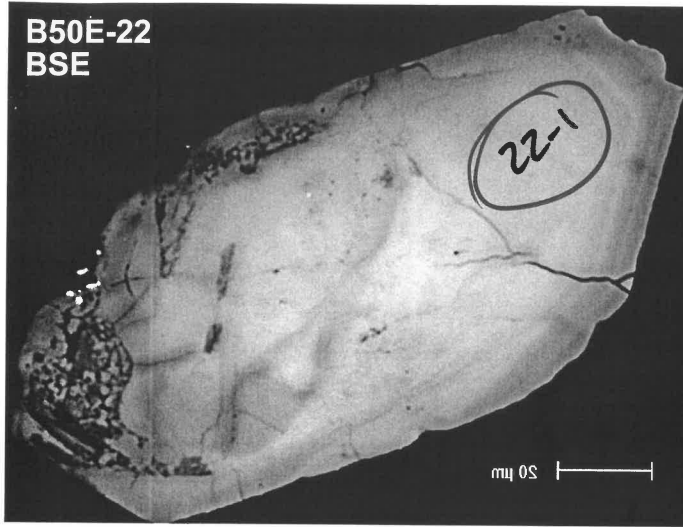


✓
+

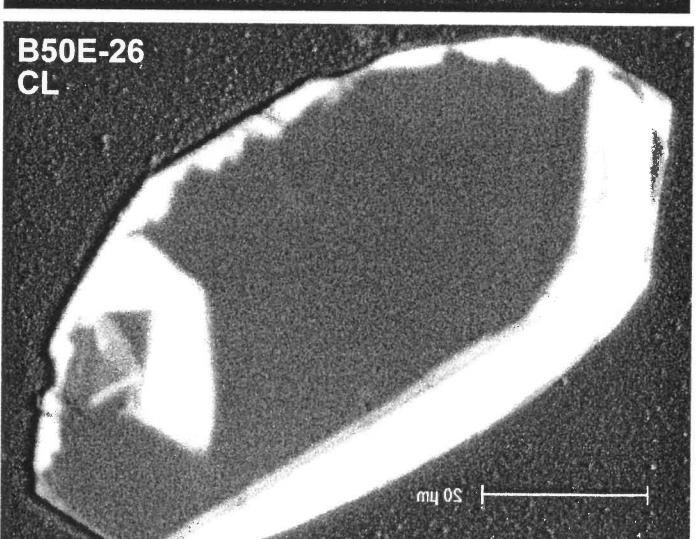
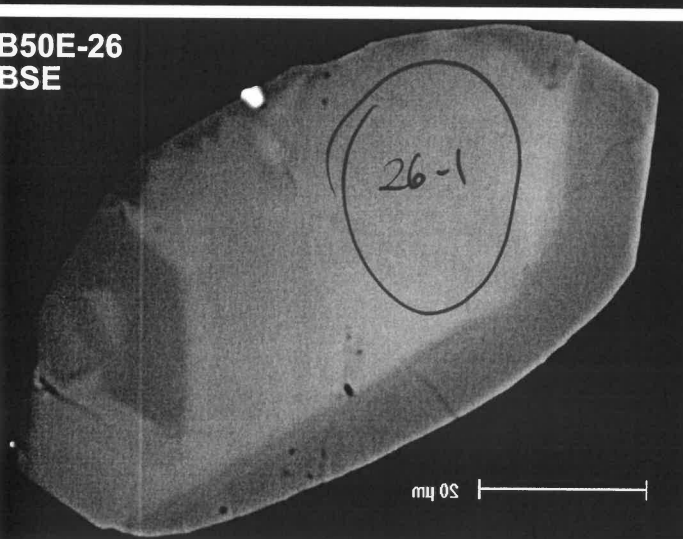
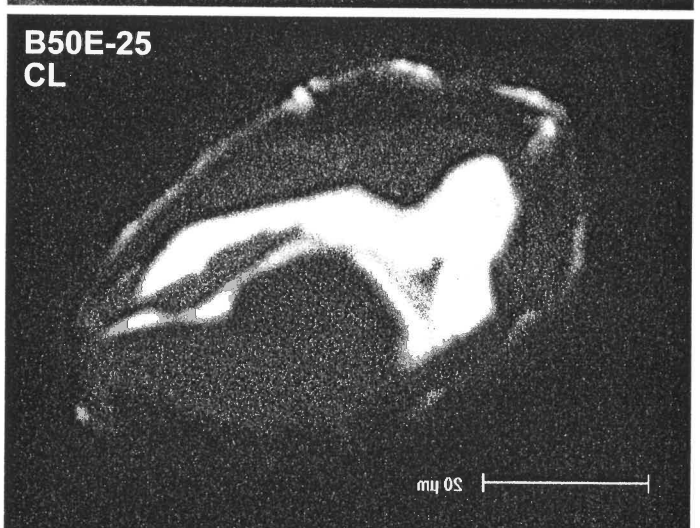
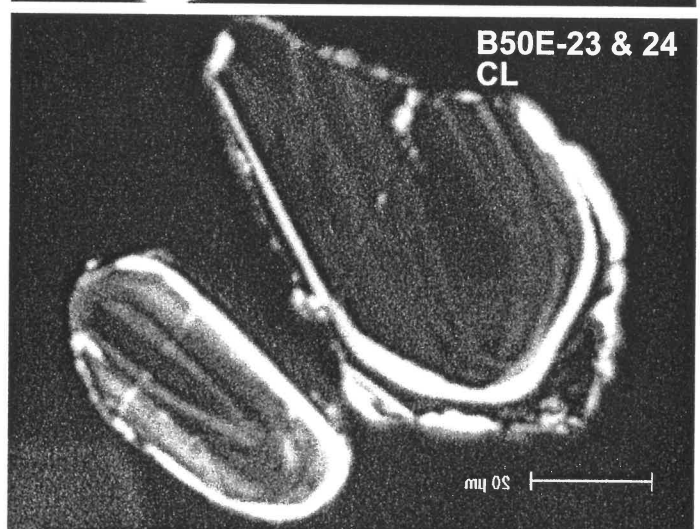
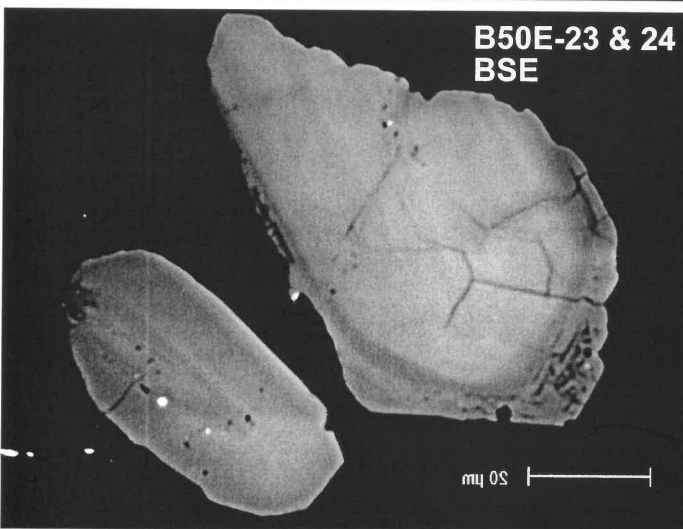


✓

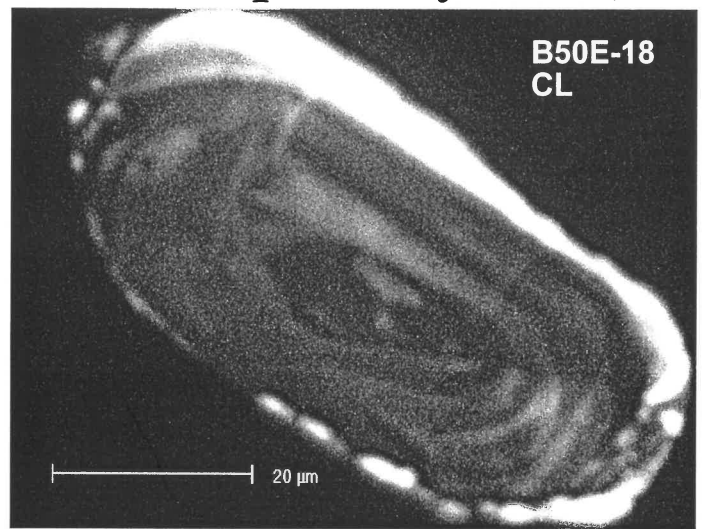
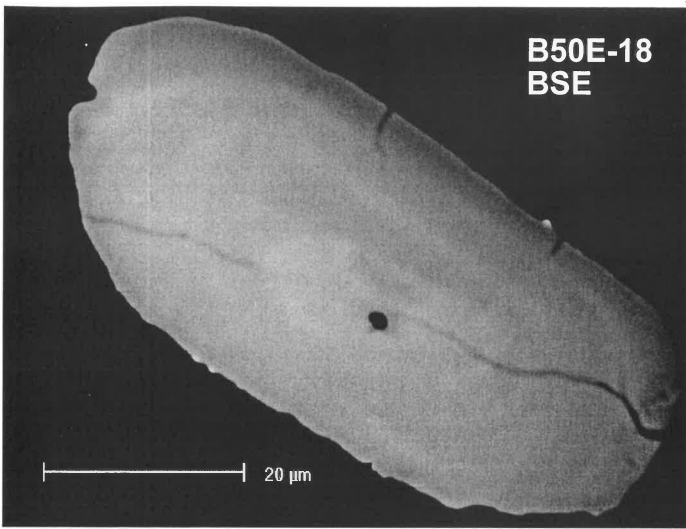
UWA B50 E - D128816 (Plutonic protomylonite)



R

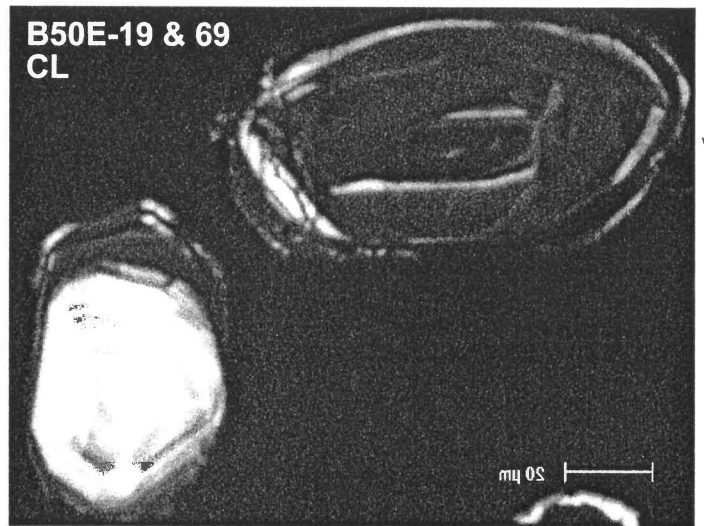
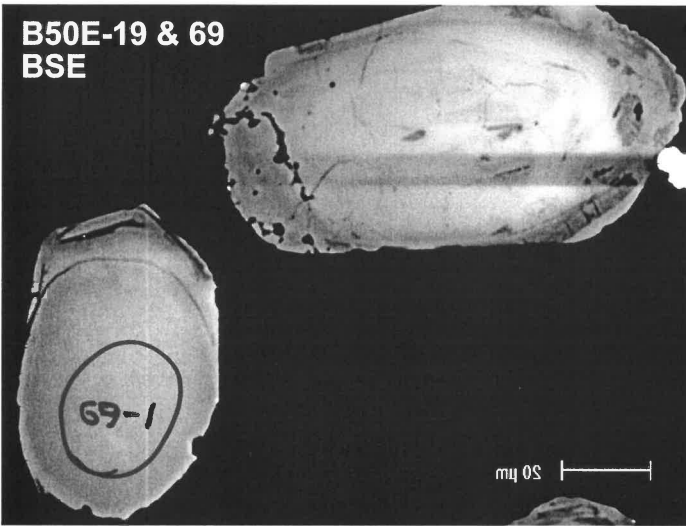


UWA B50 E - D128816 (Plutonic protomylonite)

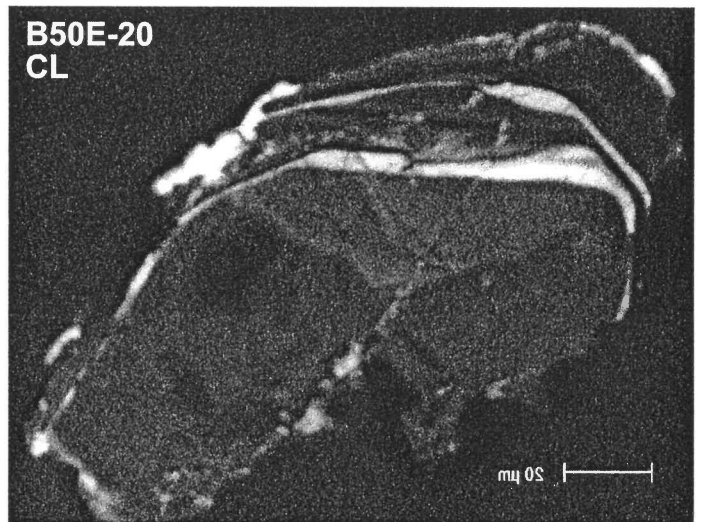
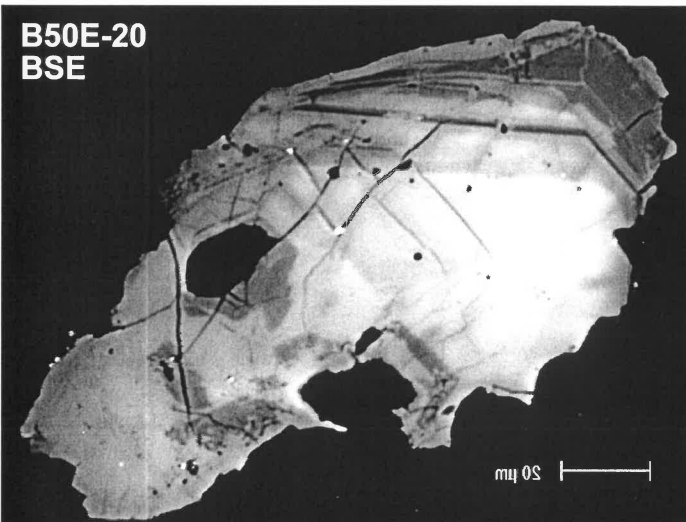


R

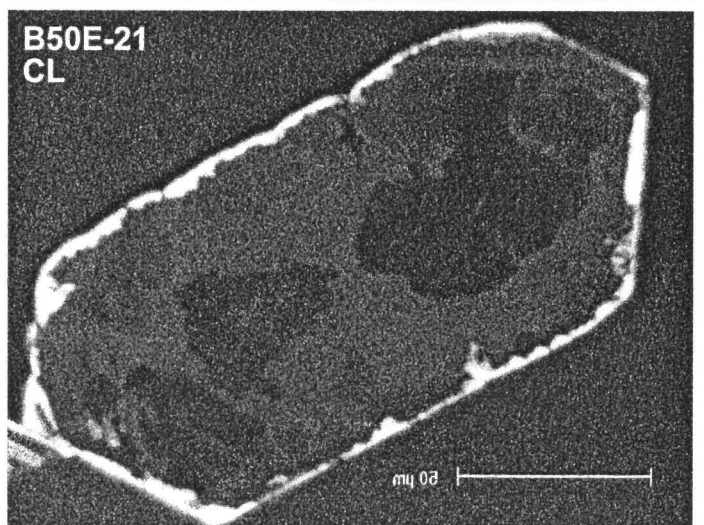
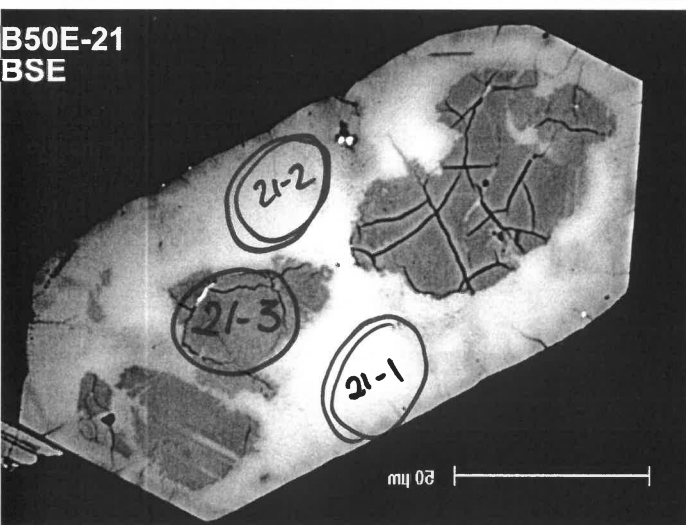
✓



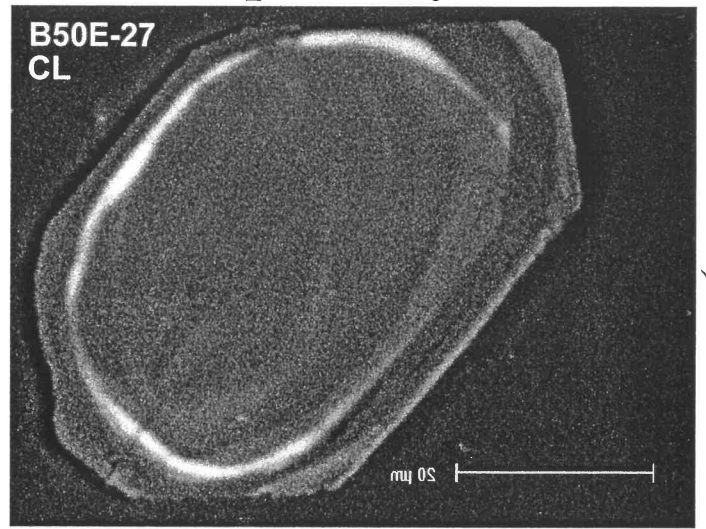
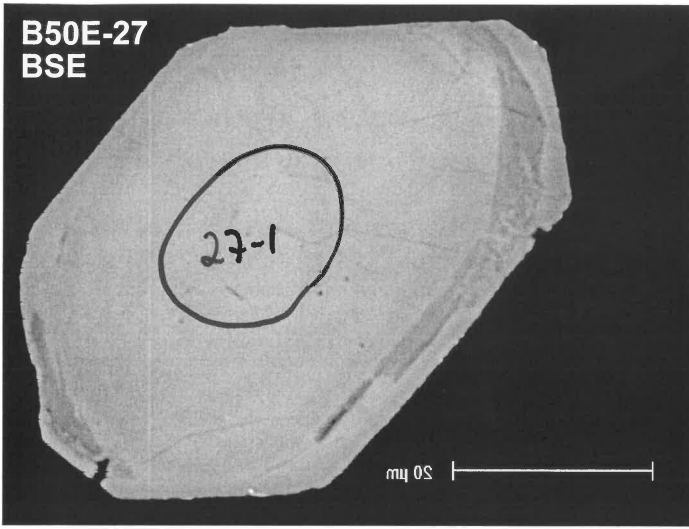
✓



✓

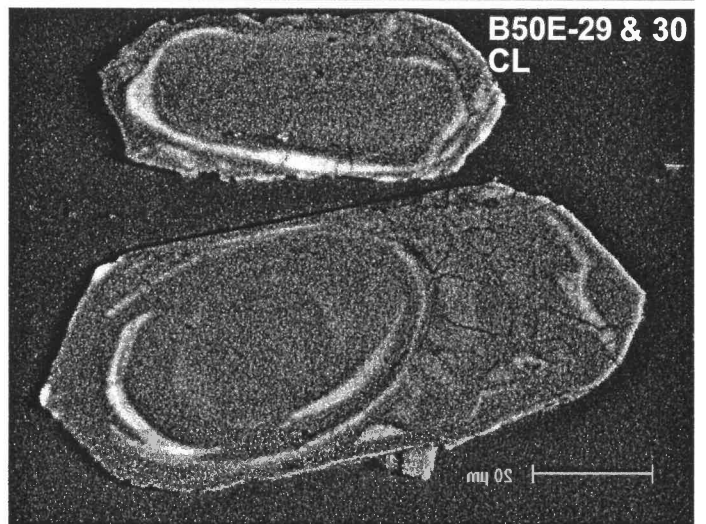
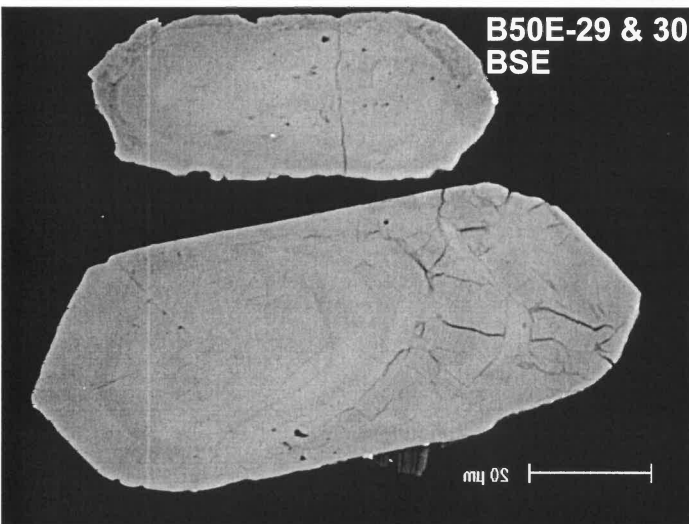
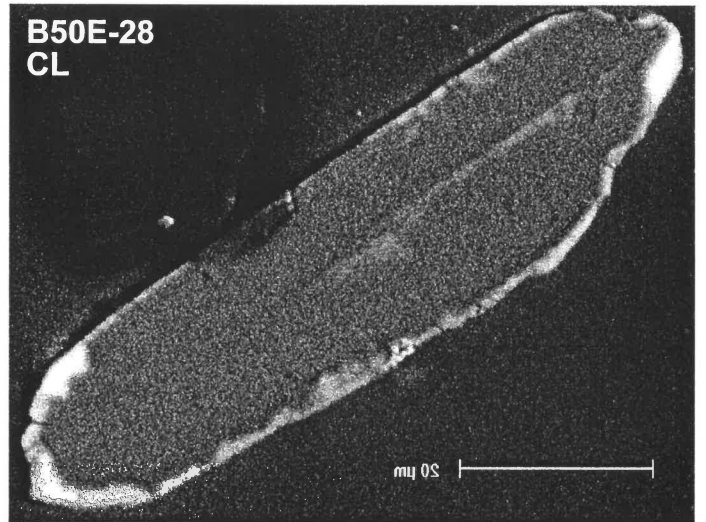
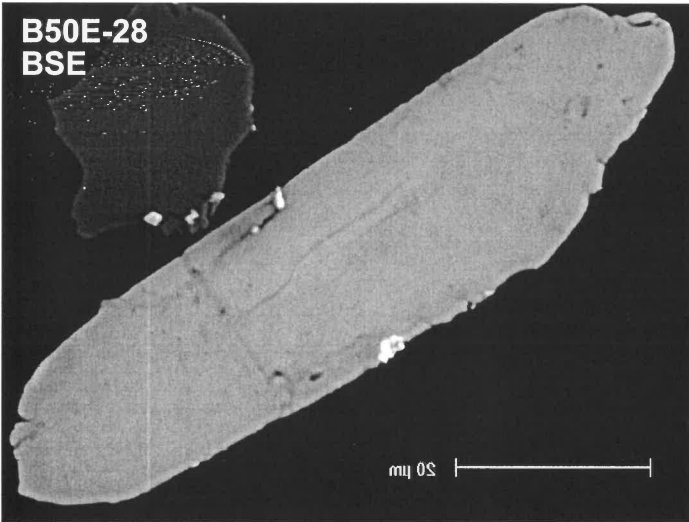


UWA B50 E - D128816 (Plutonic protomylonite)

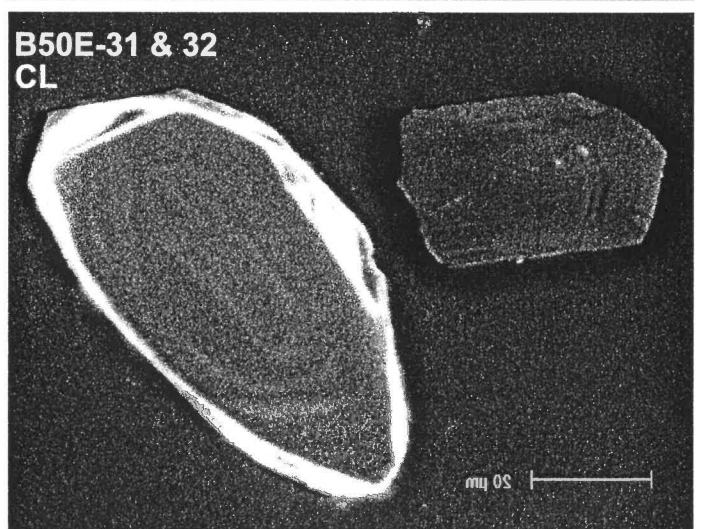
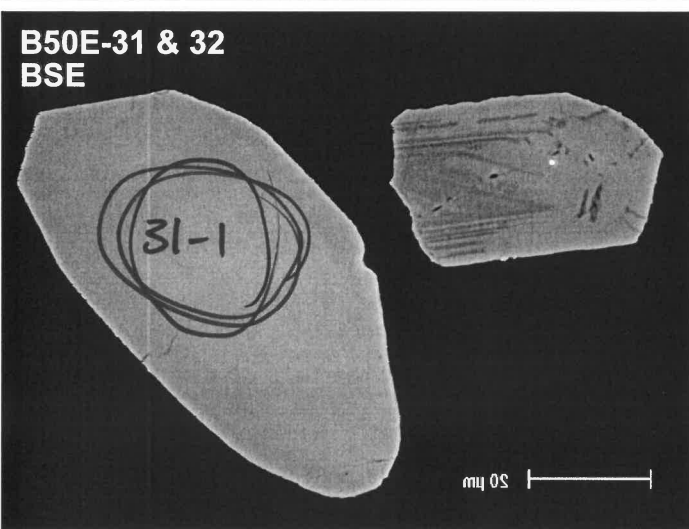


R

✓

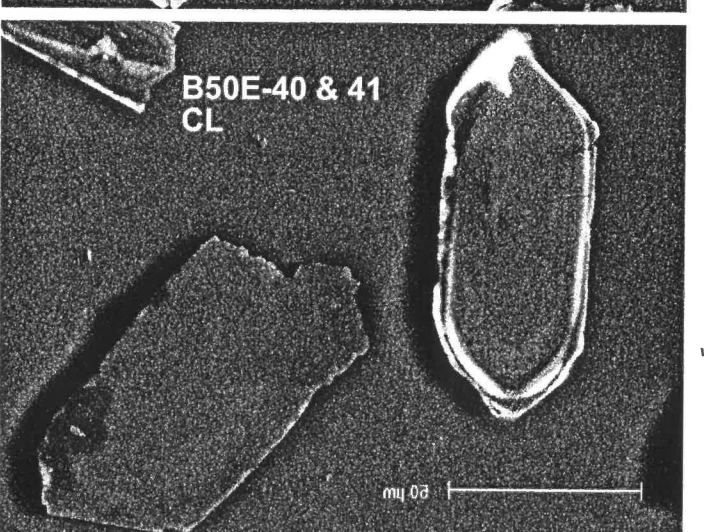
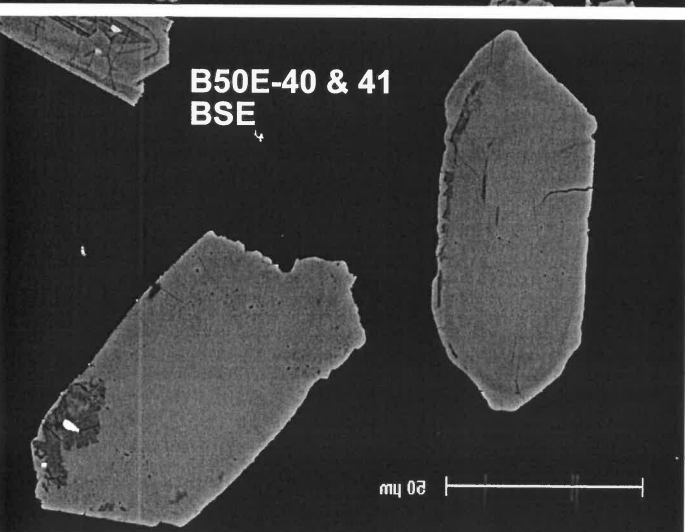
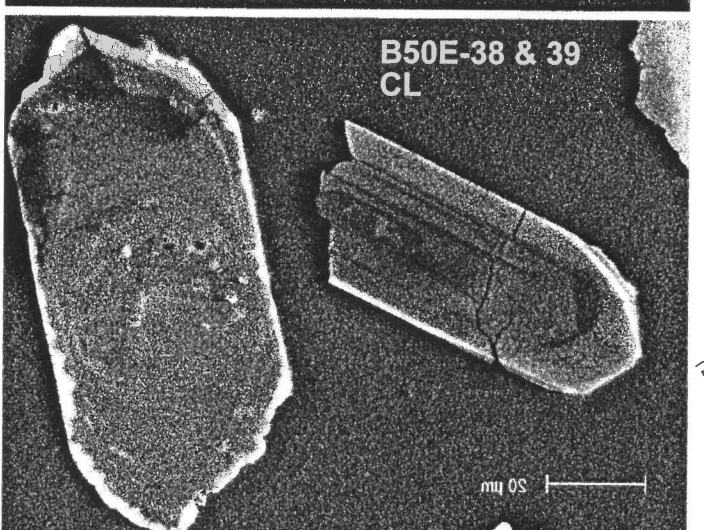
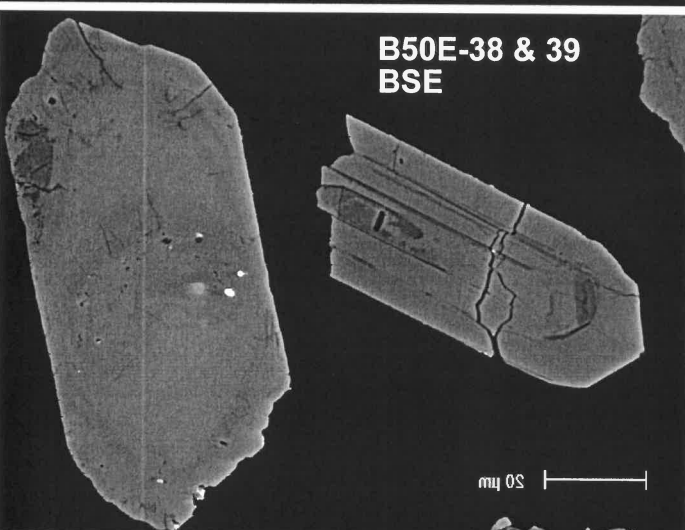
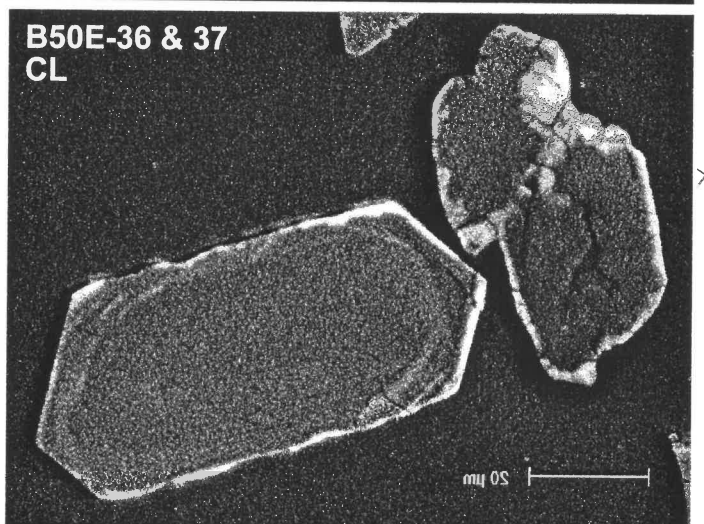
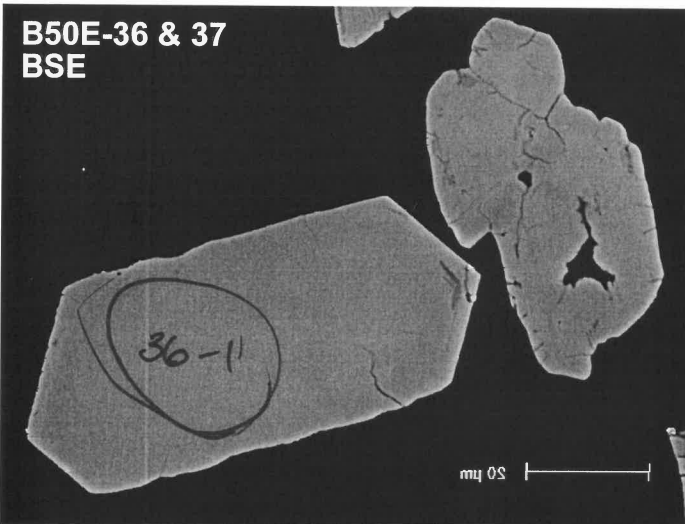
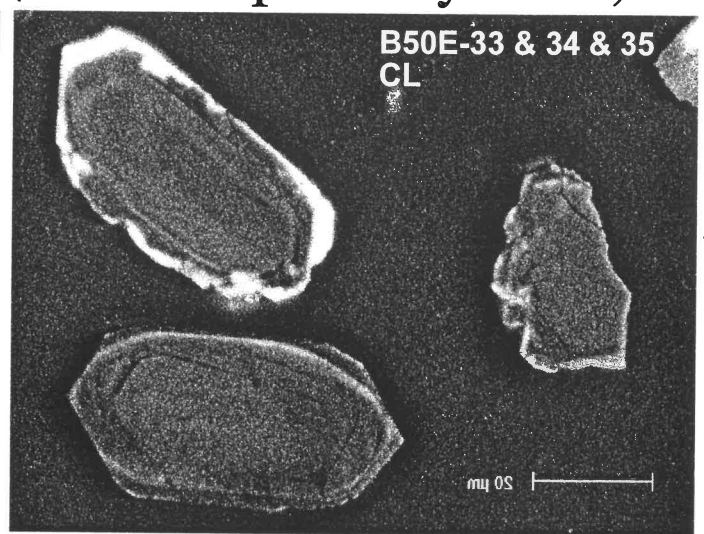
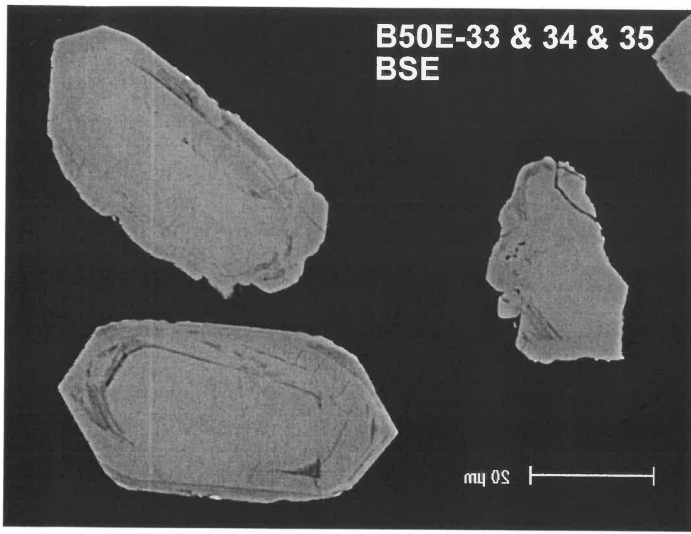


?



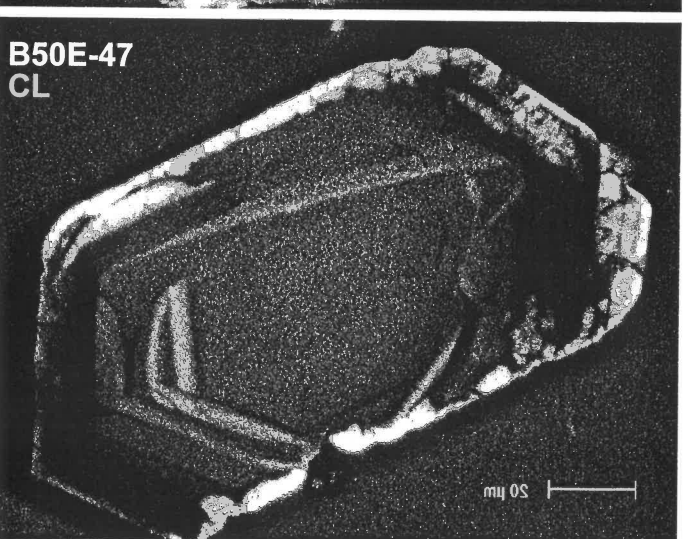
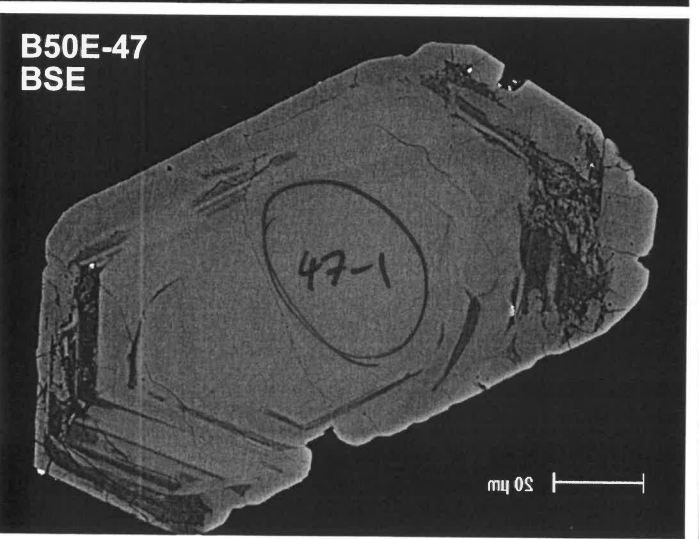
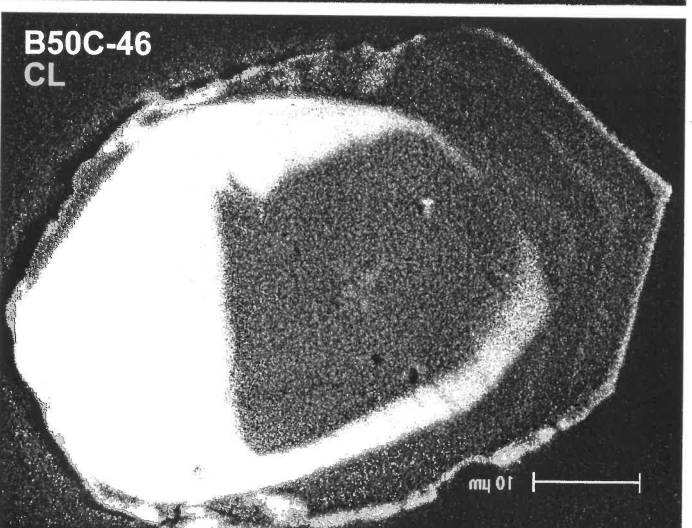
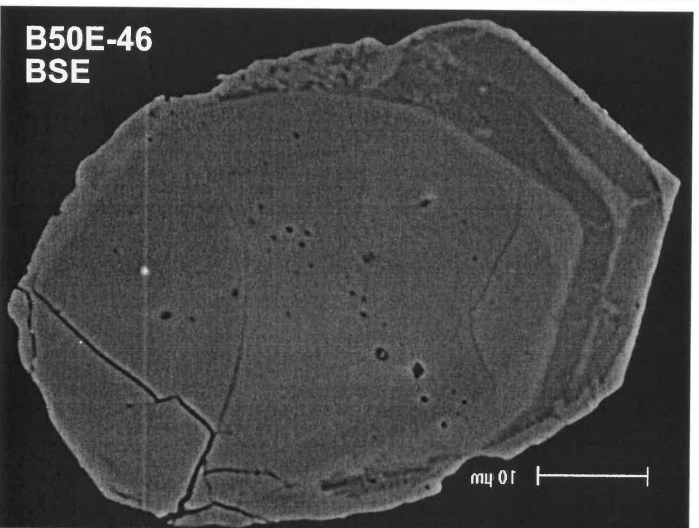
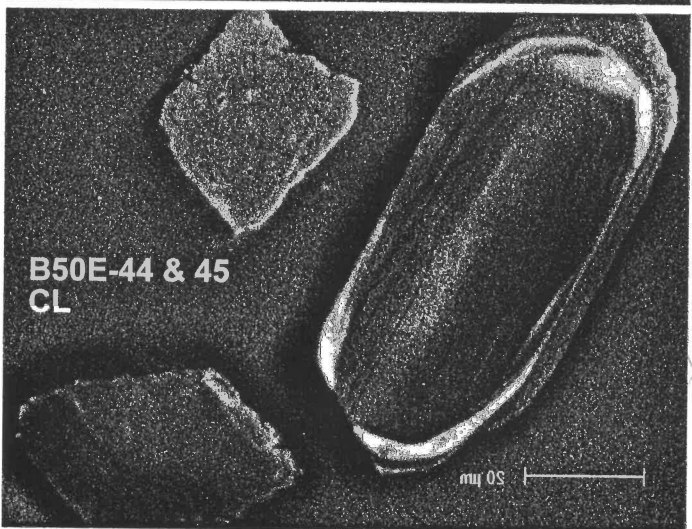
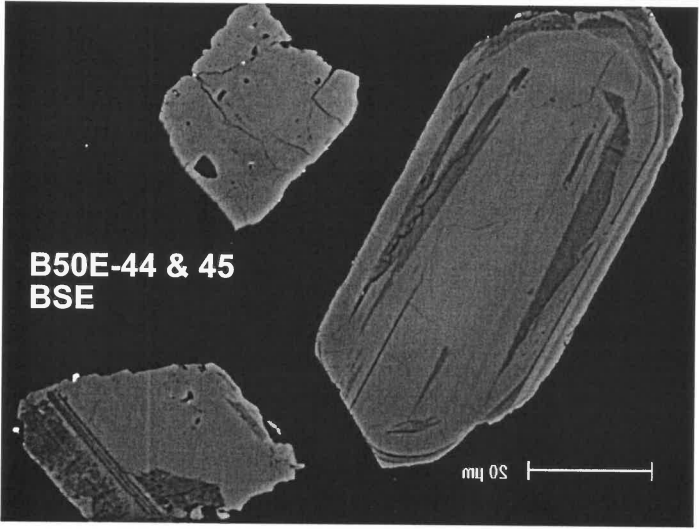
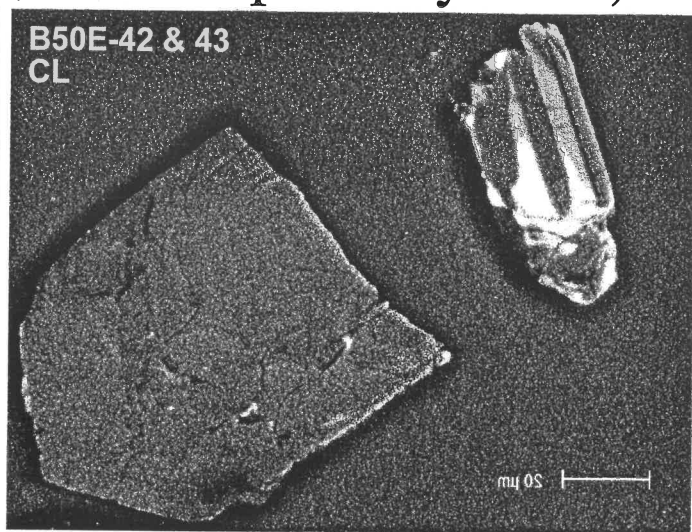
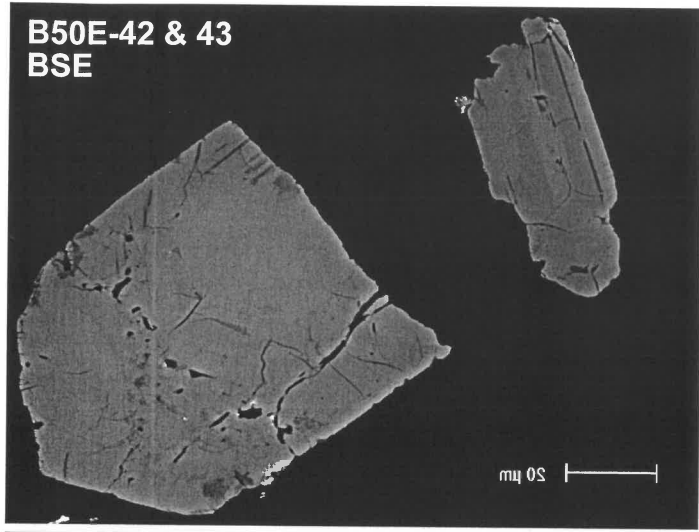
x

UWA B50 E - D128816 (Plutonic protomylonite)



R
?
?
?
X
X
2
✓
✓

UWA B50 E - D128816 (Plutonic protomylonite)



R

x

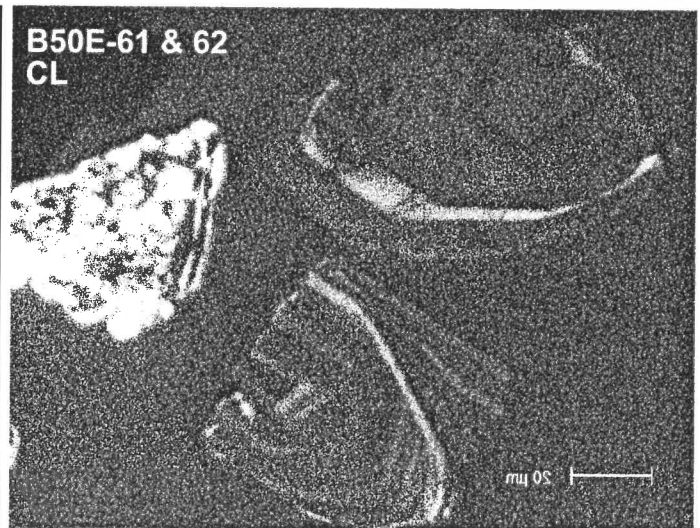
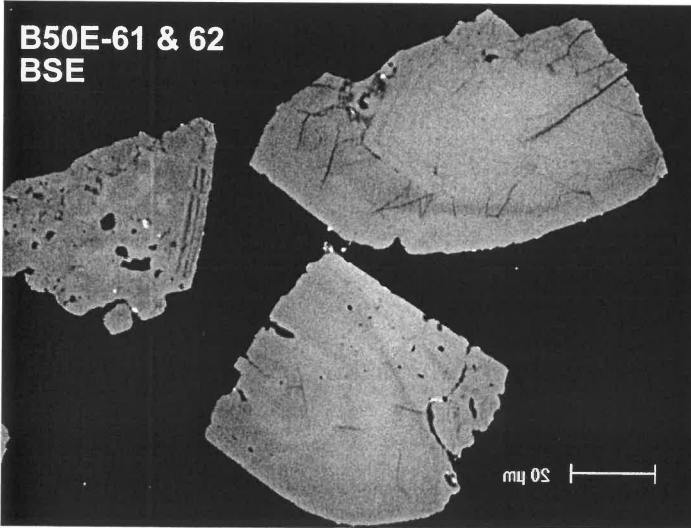
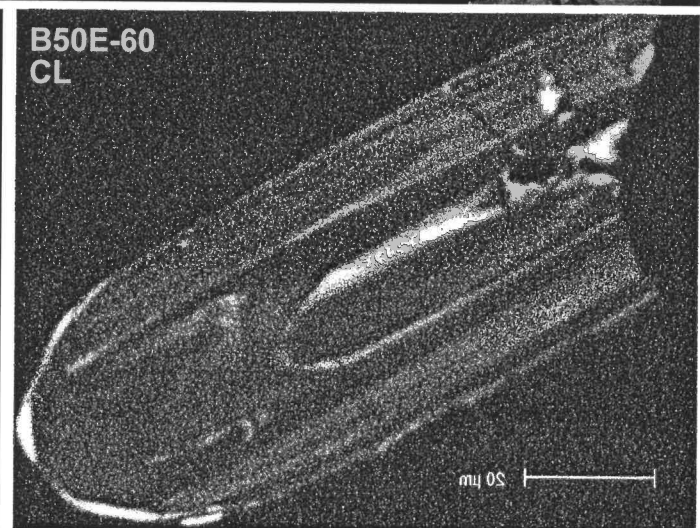
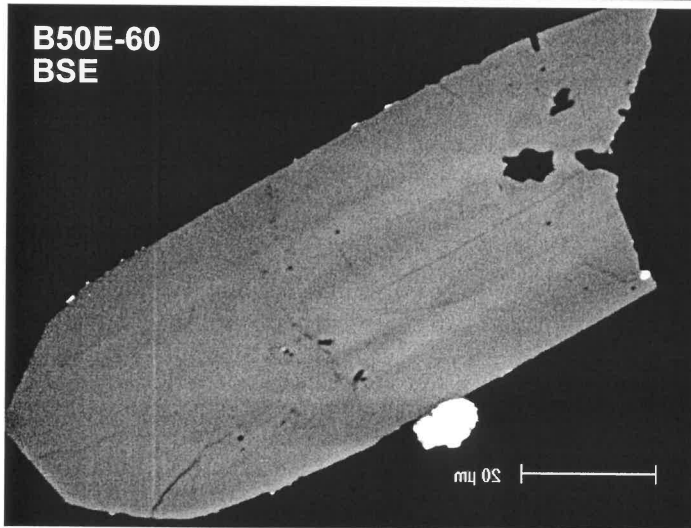
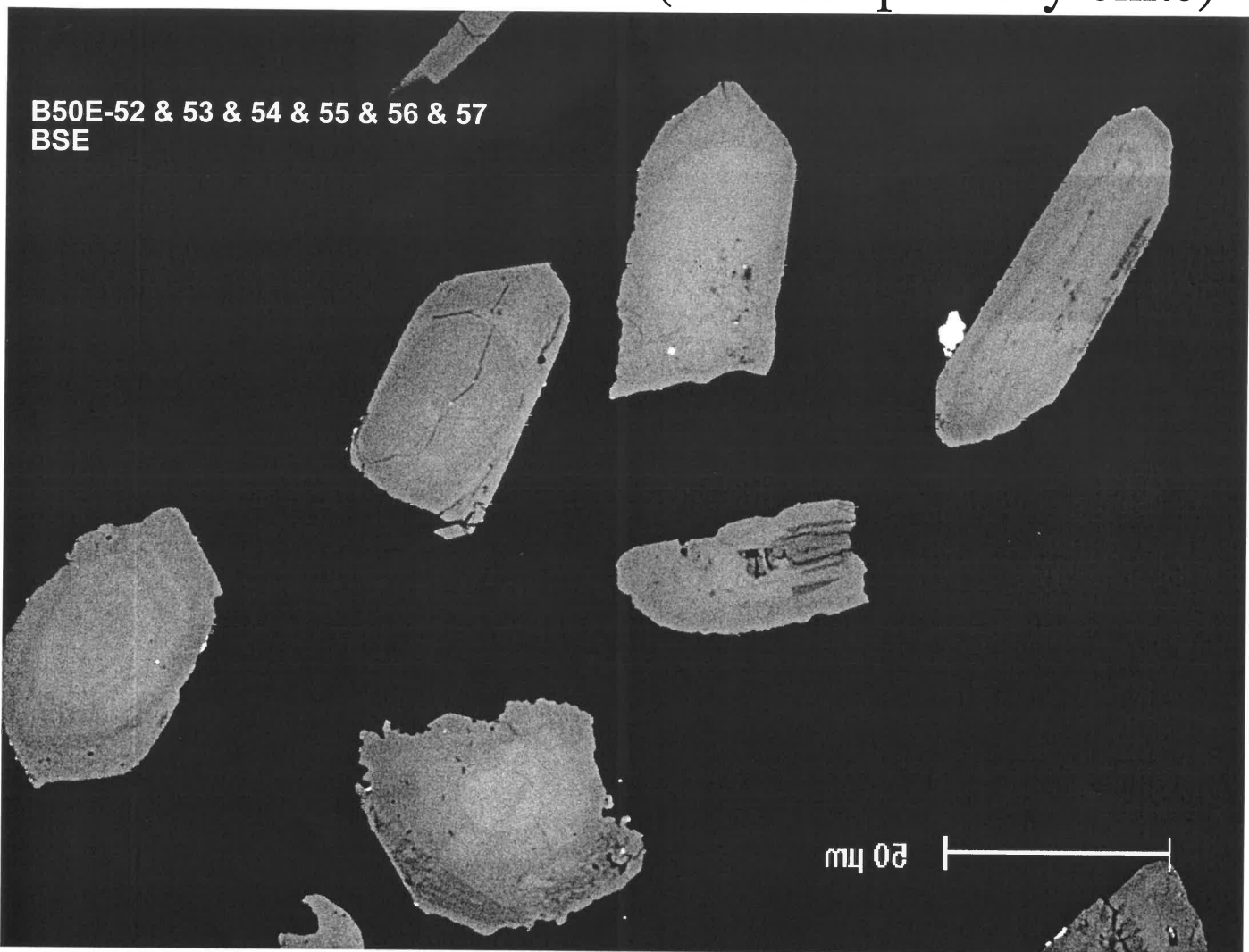
x

x

?

UWA B50 E - D128816 (Plutonic protomylonite)

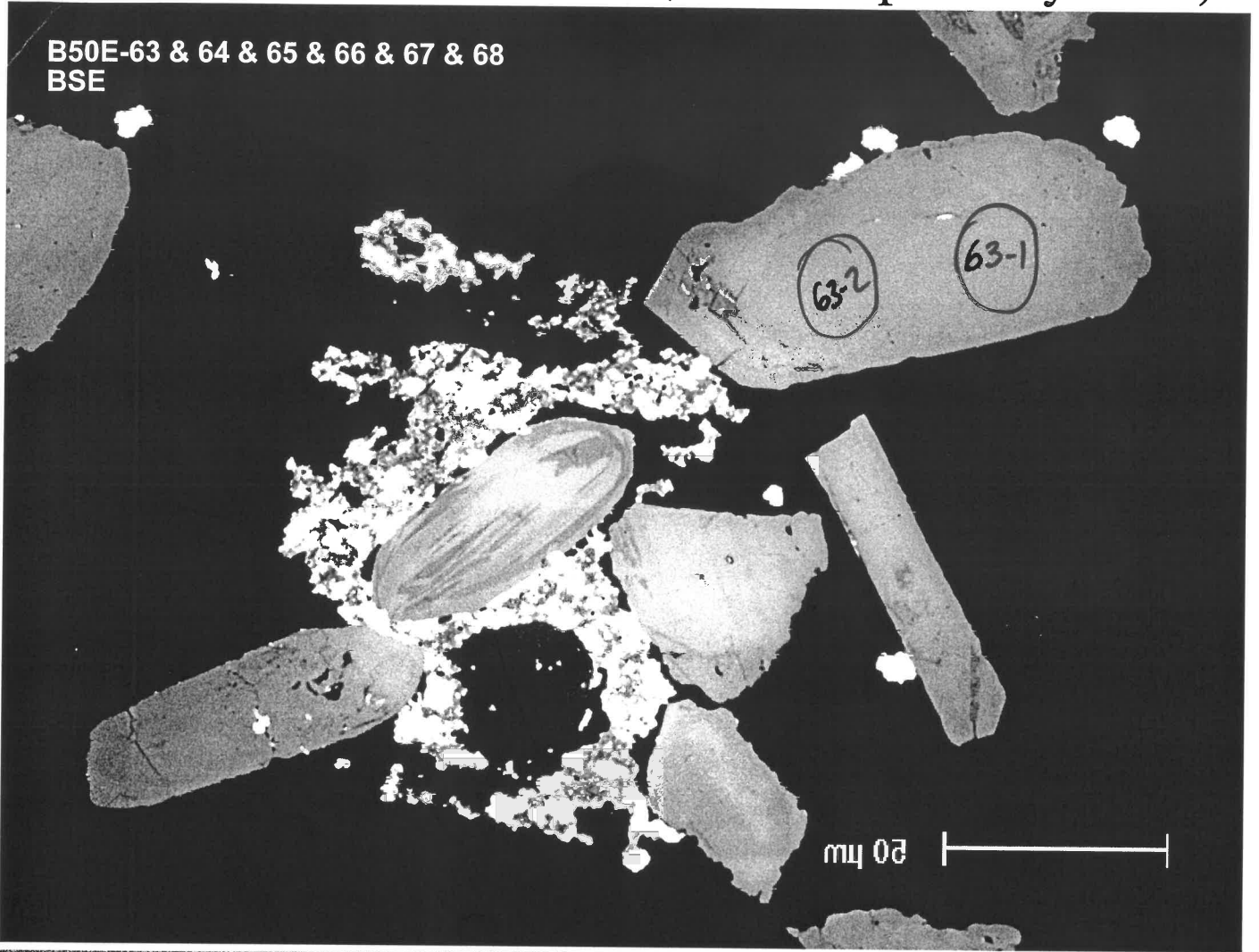
R



UWA B50 E - D128816 (Plutonic protomylonite)

R

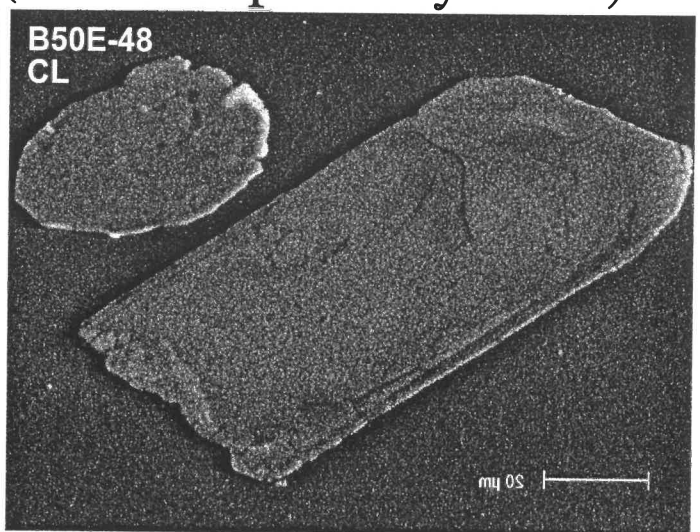
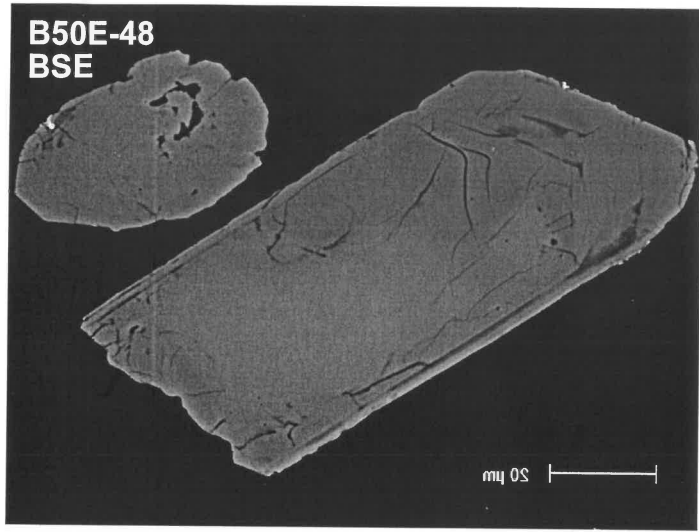
B50E-63 & 64 & 65 & 66 & 67 & 68
BSE



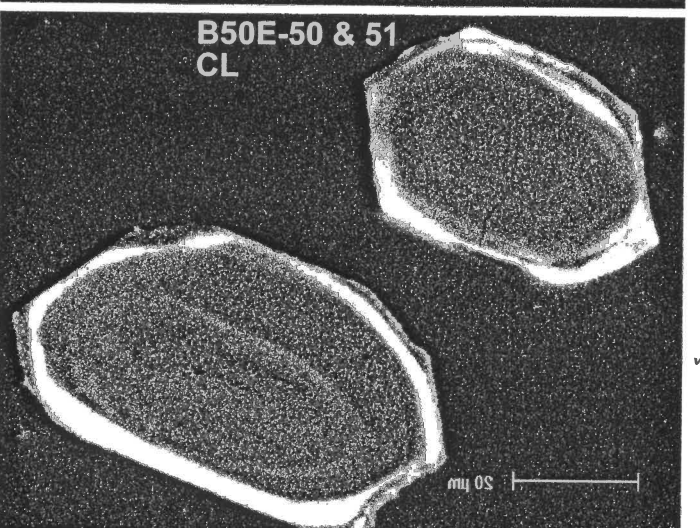
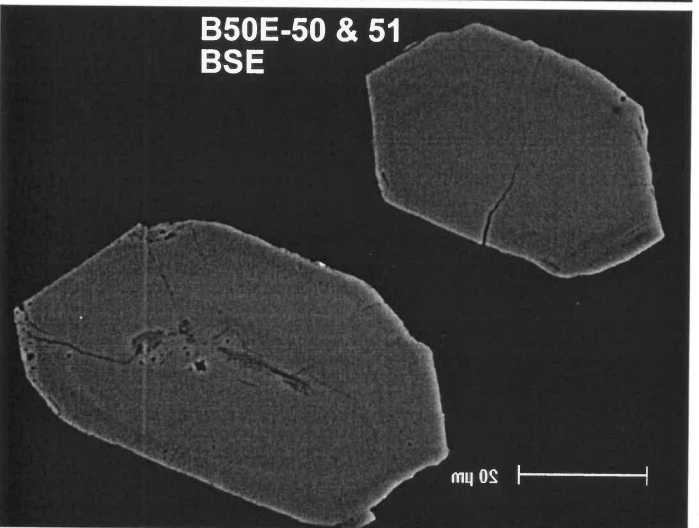
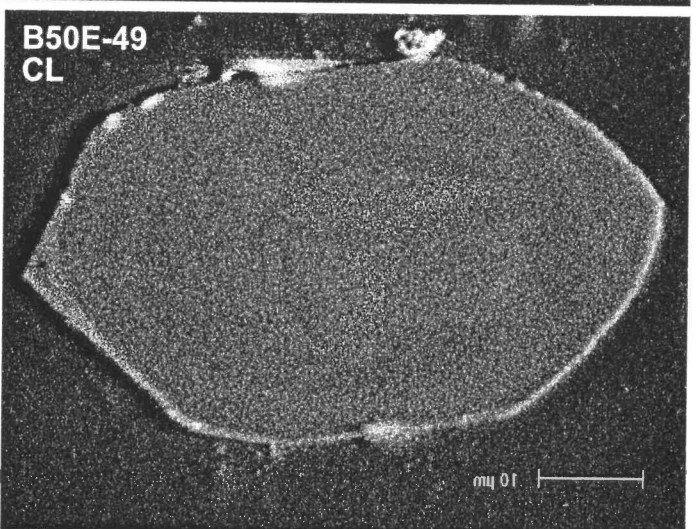
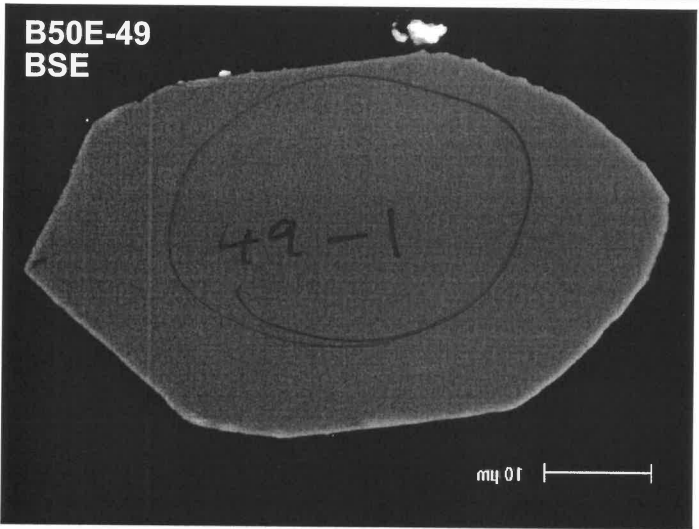
B50E-63 & 64 & 65 & 66 & 67 & 68
CL



UWA B50 E - D128816 (Plutonic protomylonite)

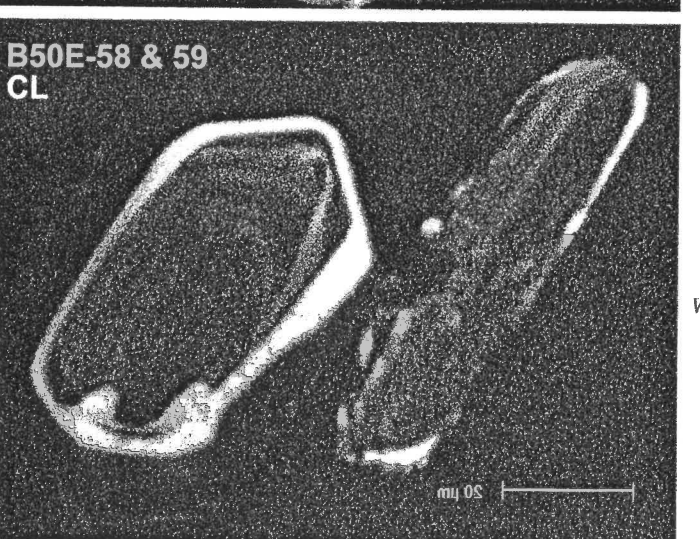
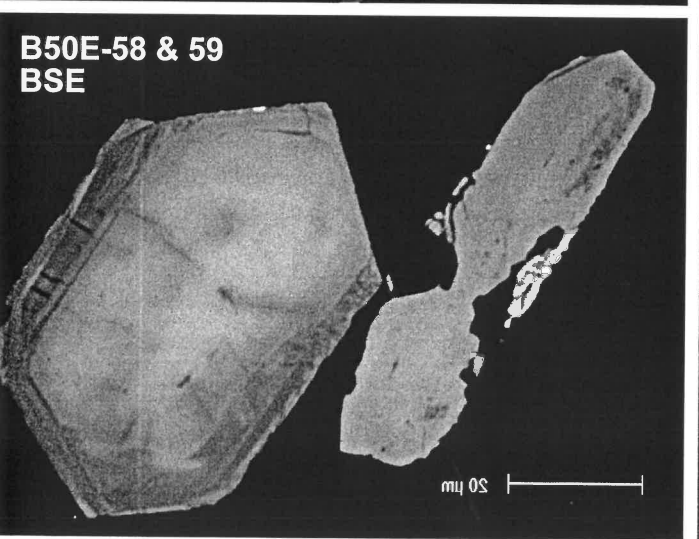


R



✓

✓



X

✓