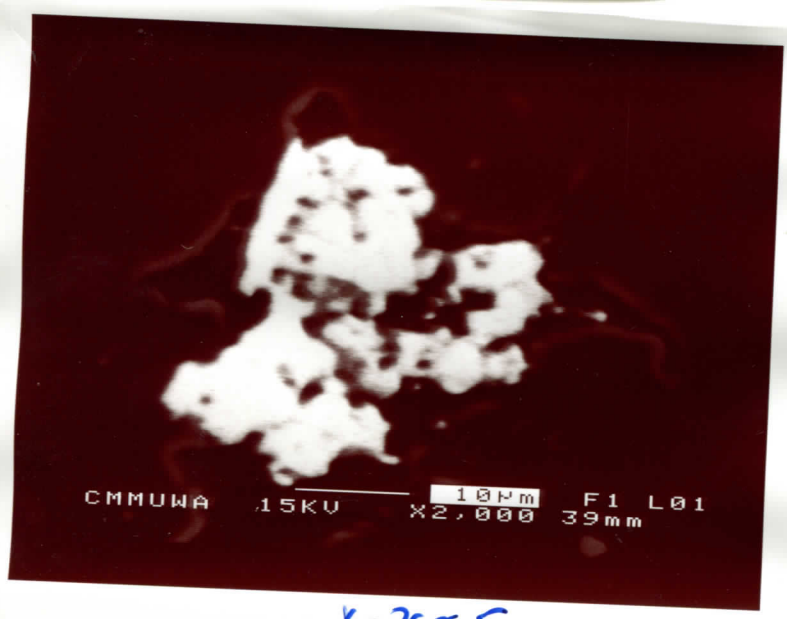
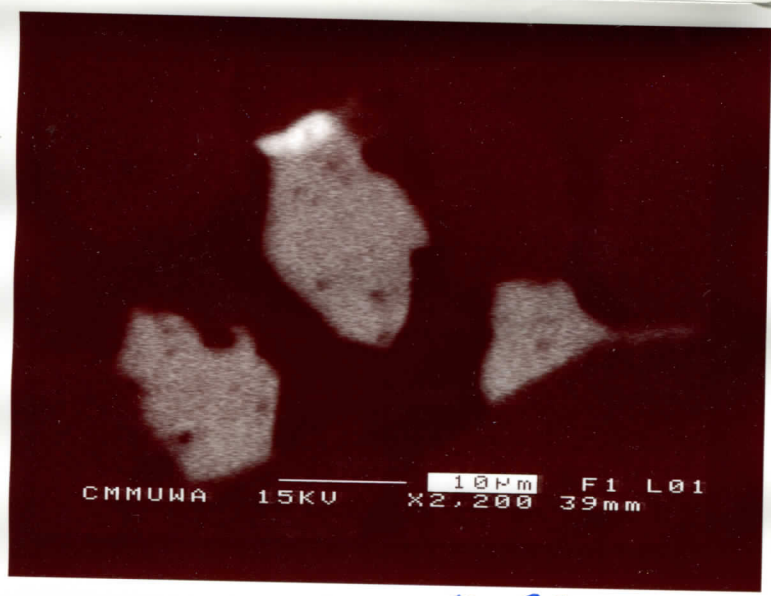


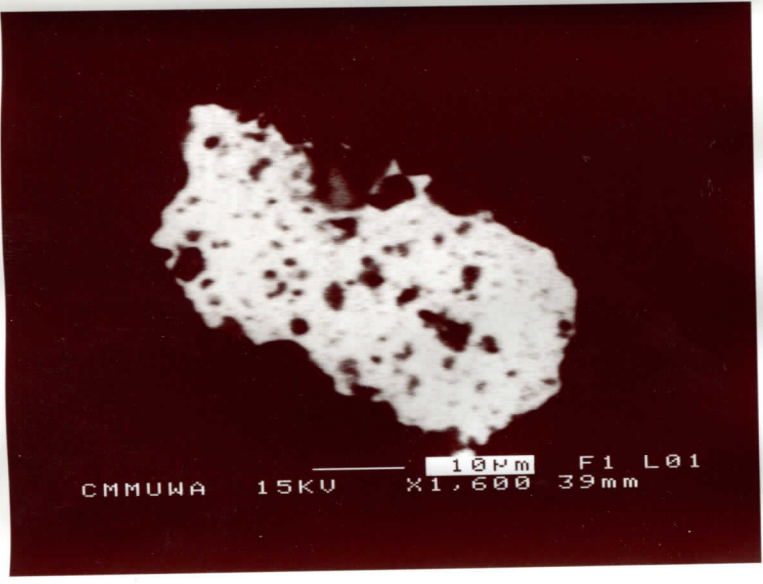
THORN PT.



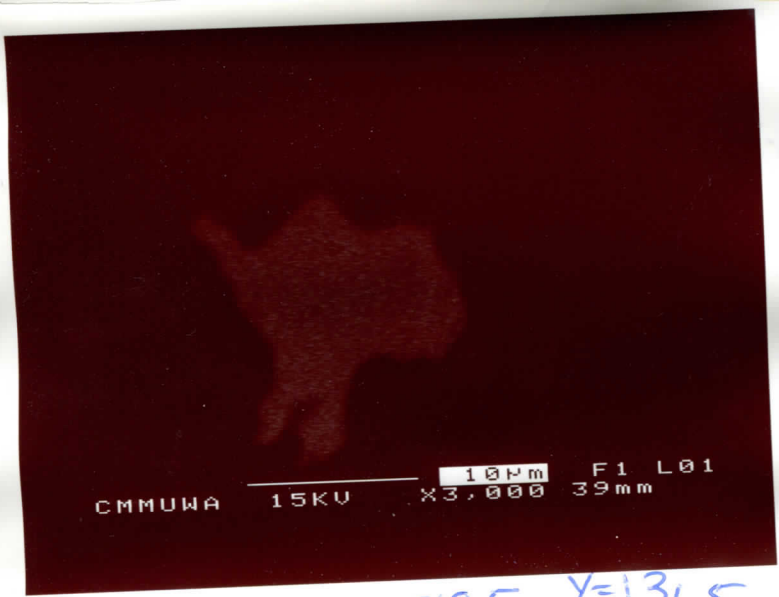
X=268.5  
Y=370



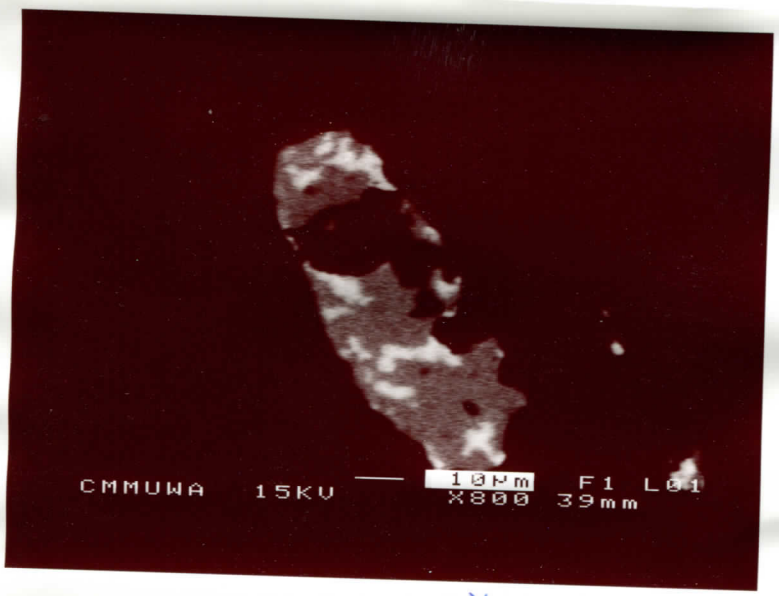
X=370  
Y=333



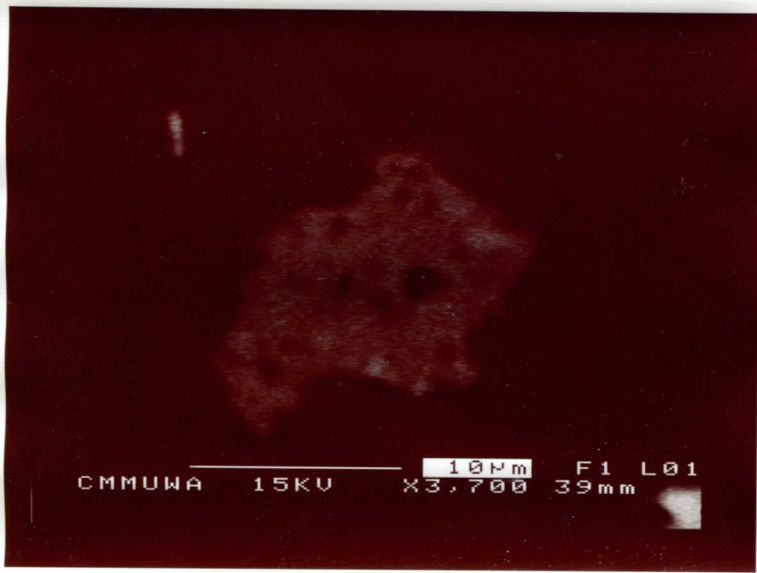
X=139  
Y=171.5  
monz



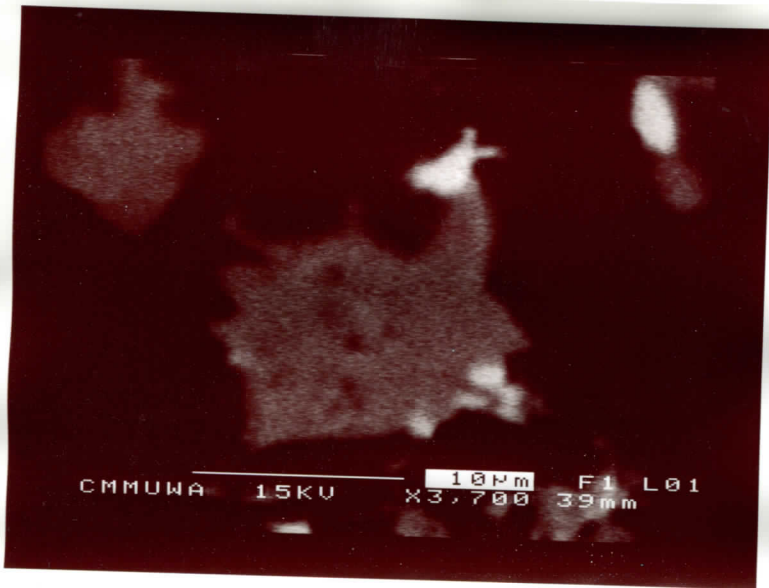
X=310.5 Y=131.5



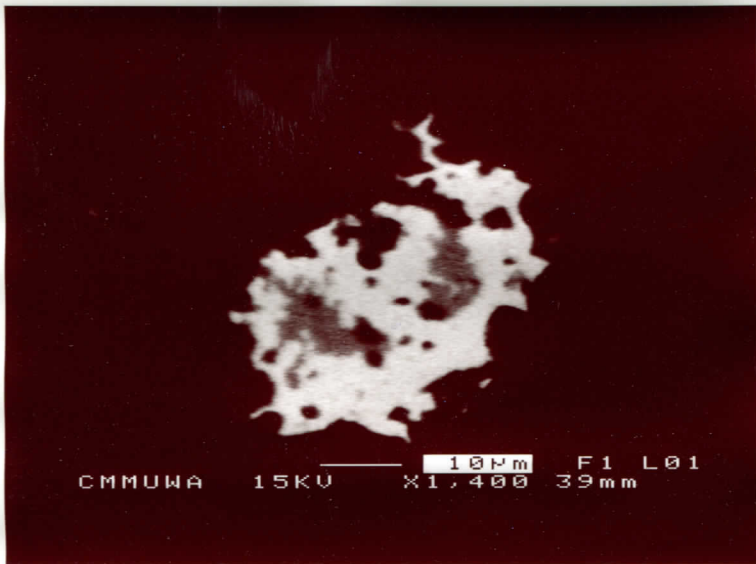
bgo  
X=245  
Y=138.5



X=160  
Y=141

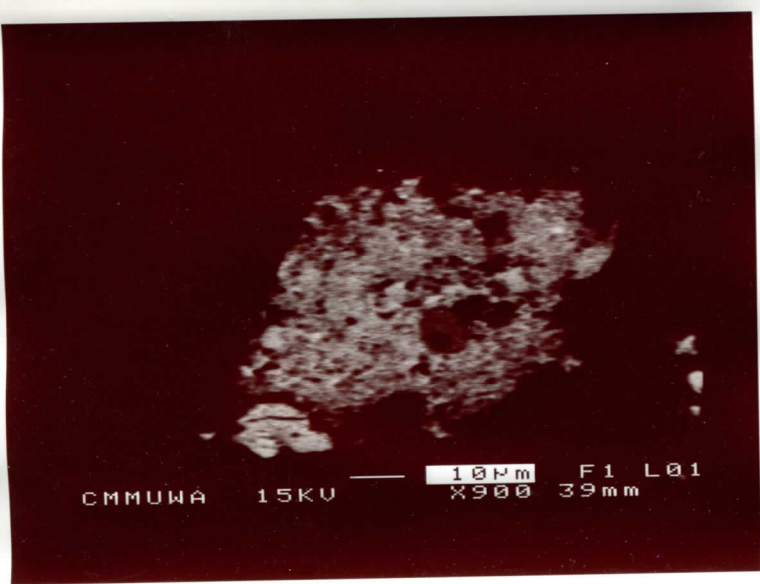


X=160  
Y=142



Xenor  
worm  
brym

X=157.5  
Y=142.5



2.



4.

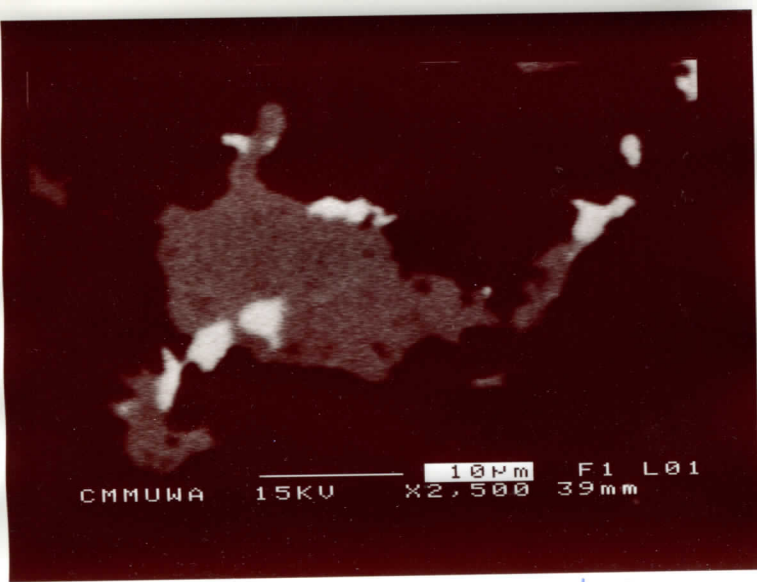
CeNdPca



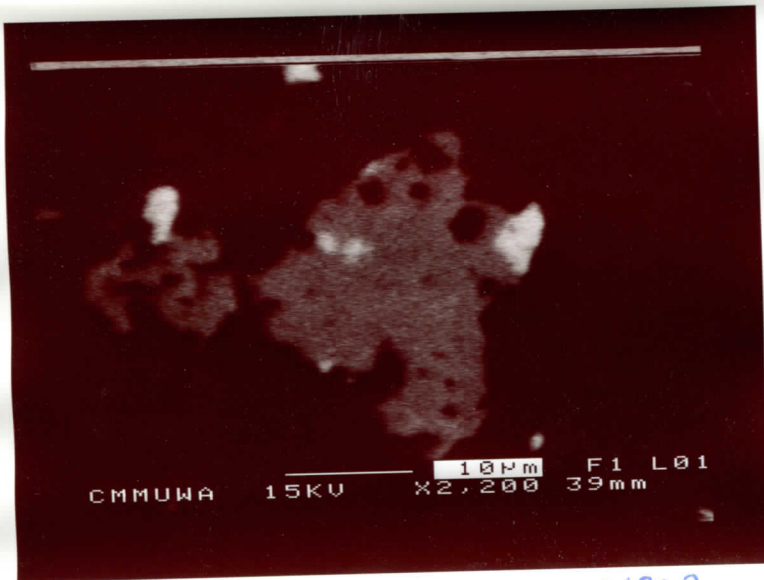
11.

Ce,Nd,Ca.

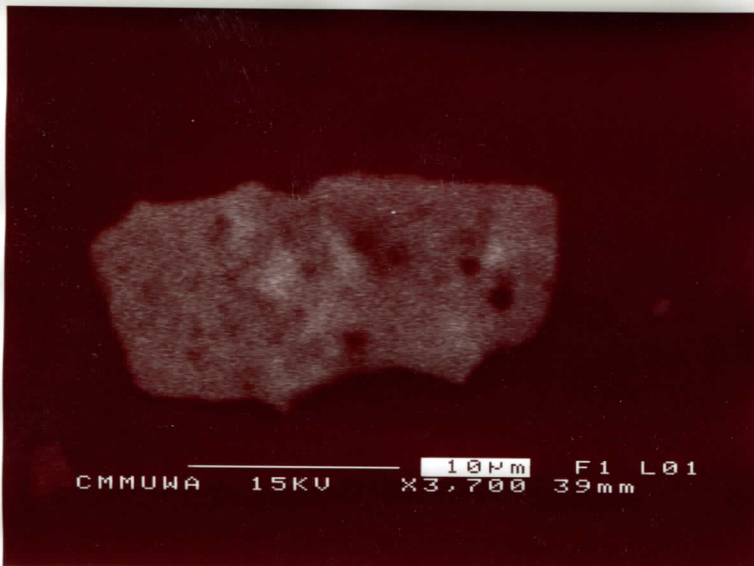




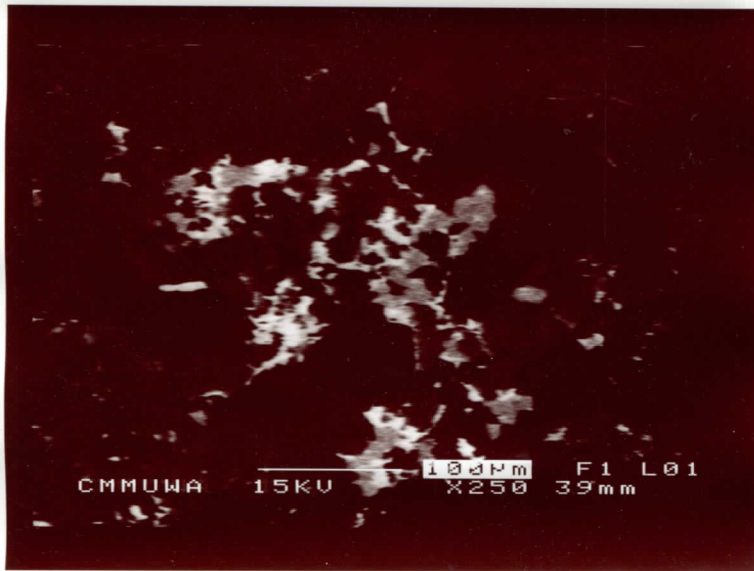
X = 217.7 ~~210.7~~ 21. bje XPOY.  
Y = 124.5



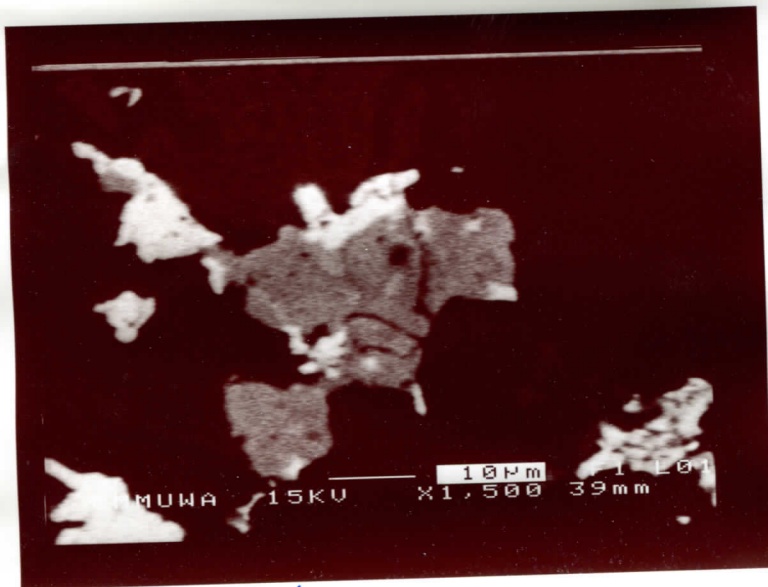
X = ~~272.5~~ 272.5 xeno  
Y = 123.5 bji



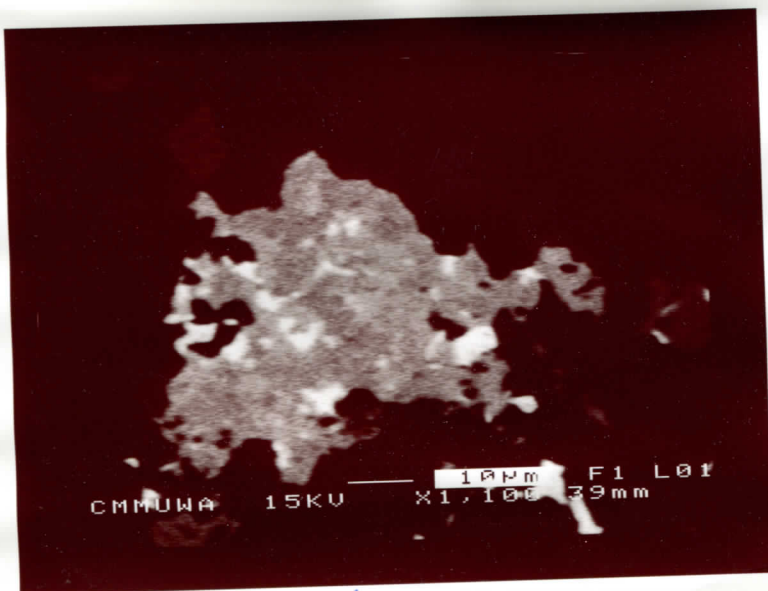
bjj xeno Y.  
320.5 = X  
126.5 = Y



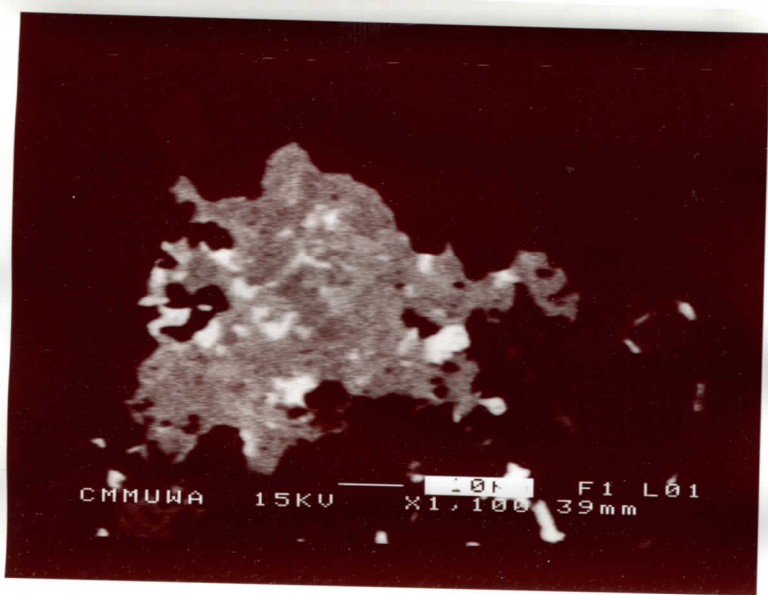
X=189  
Y=413



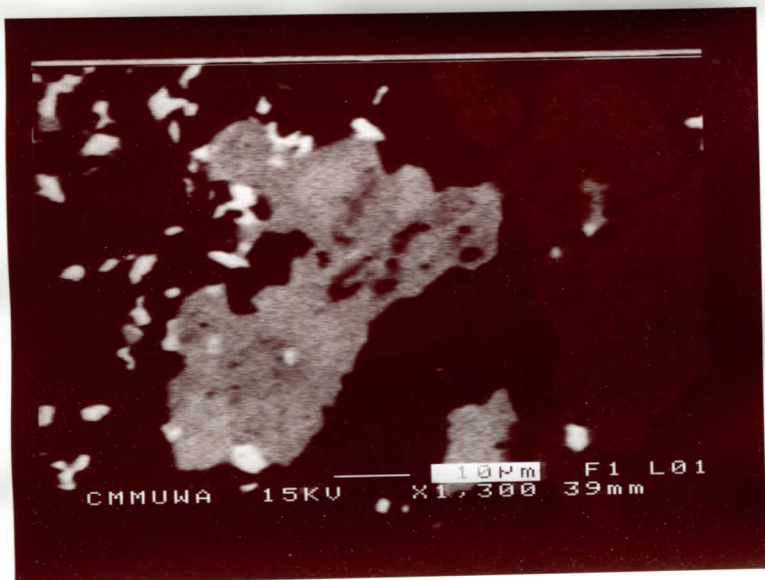
X=188  
Y=413.5



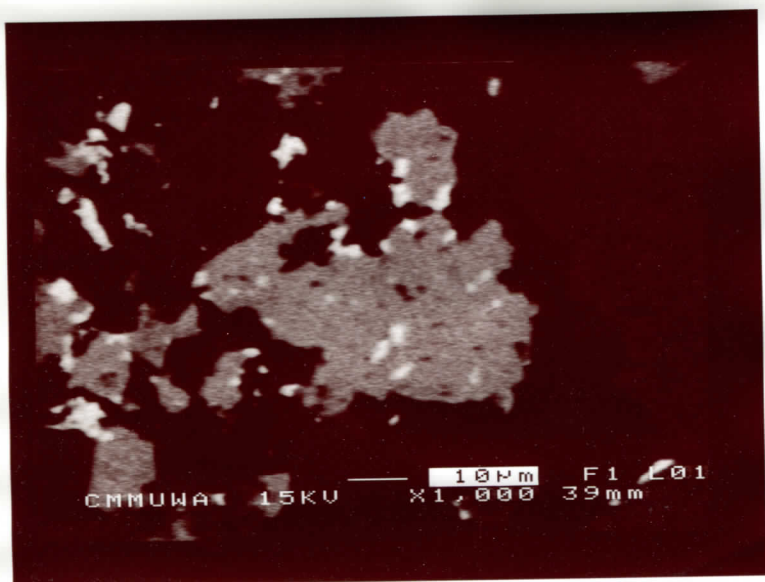
X=254.5  
Y=418.8



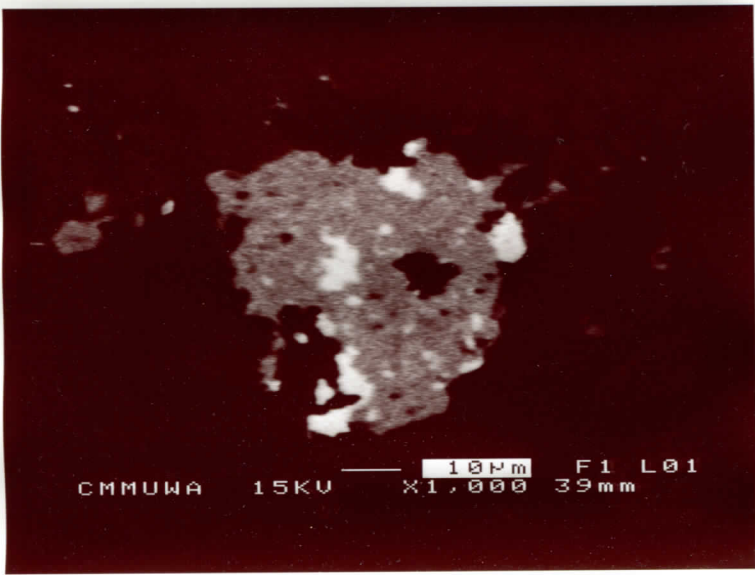
X=254.5  
Y=419



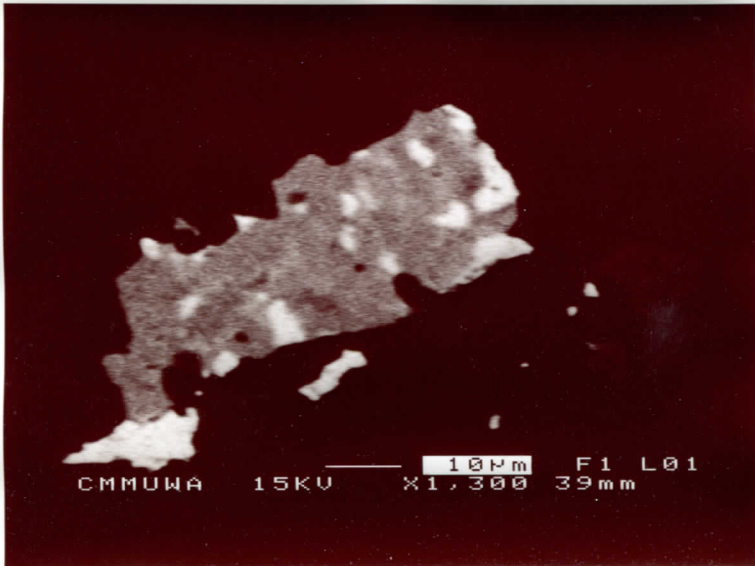
X=360.5  
Y=414.5



X=358  
Y=413

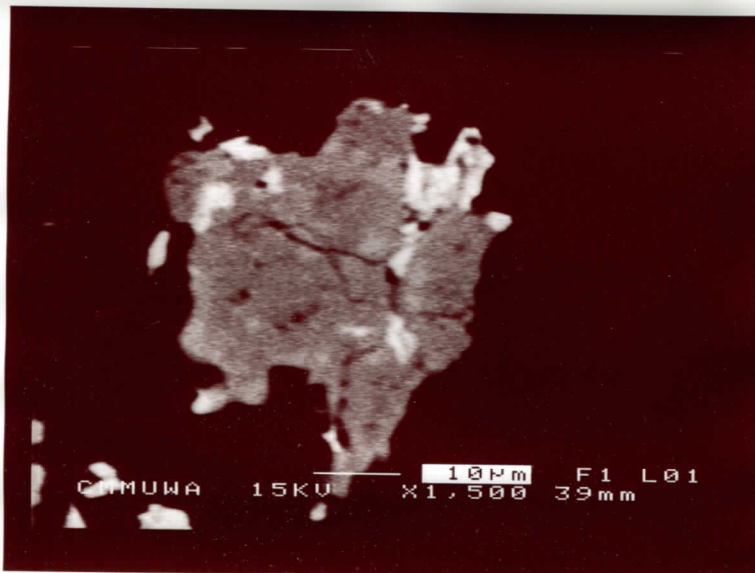


X = 360  
Y = 418.5



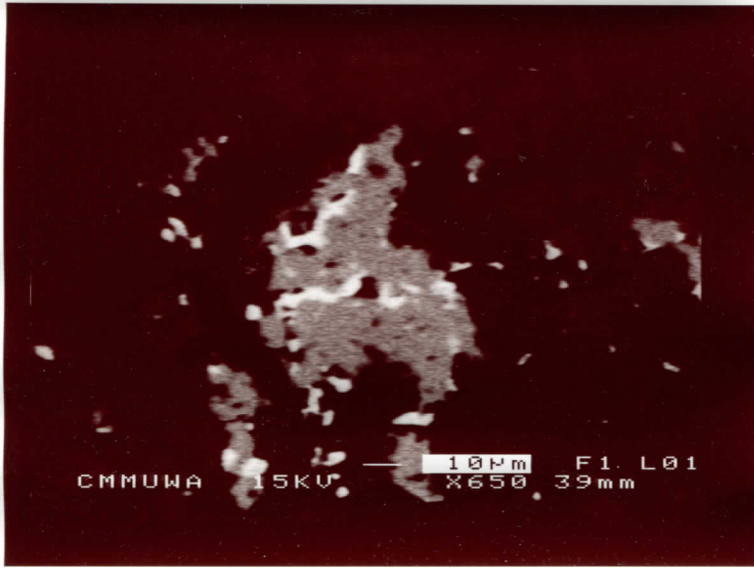
X = 188  
Y = 409.5

from  
Y = 406.5  
X = 187 disc  
5mm dia.

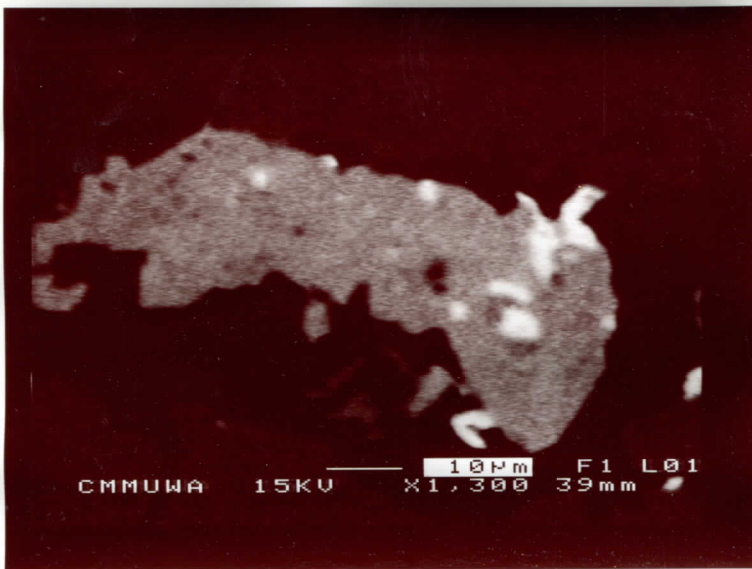


X = 184.5  
Y = 410

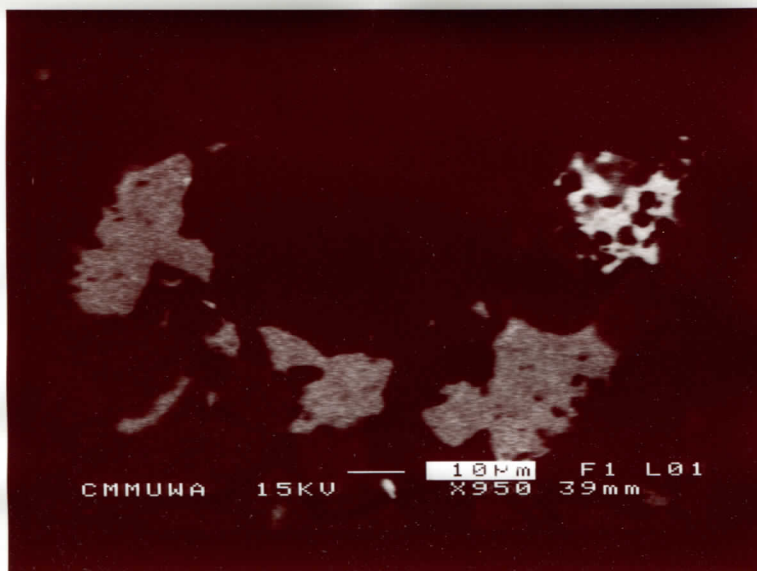




X=162  
Y=361

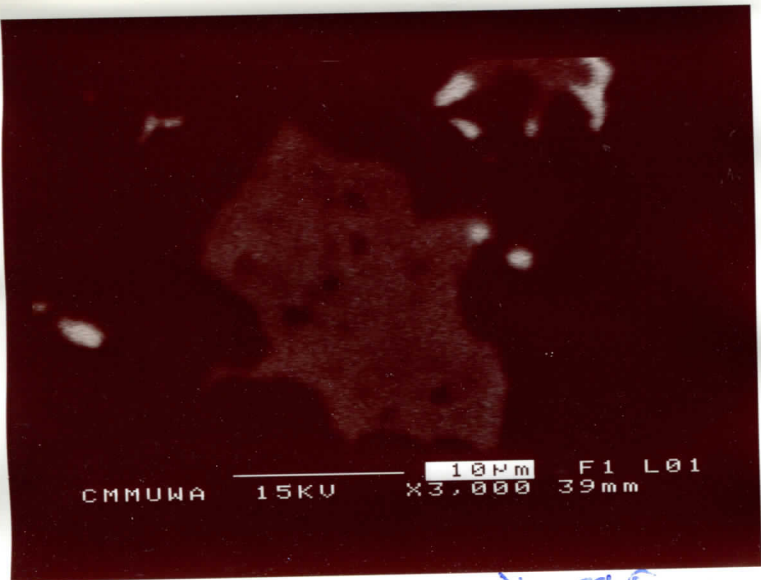


X=294  
Y=363.5

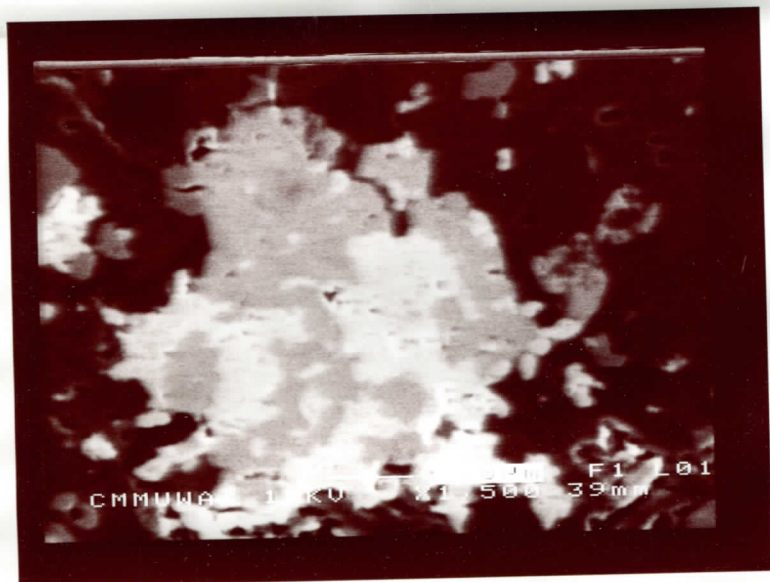
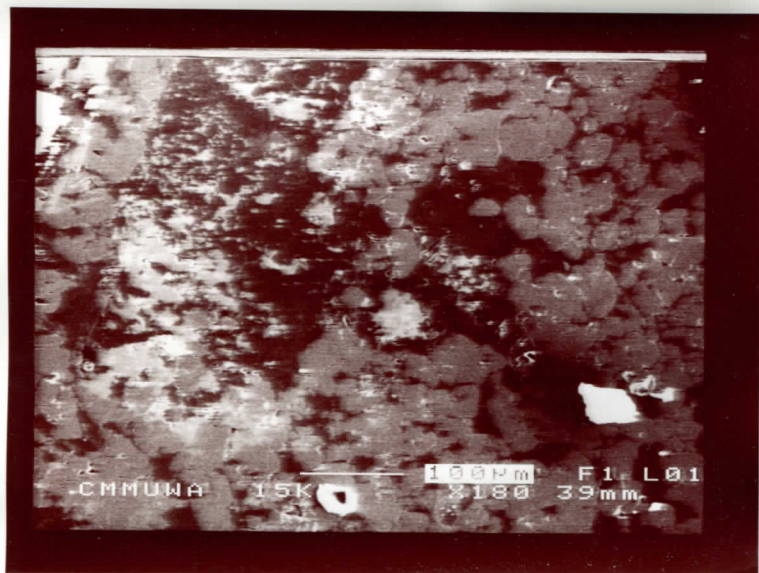


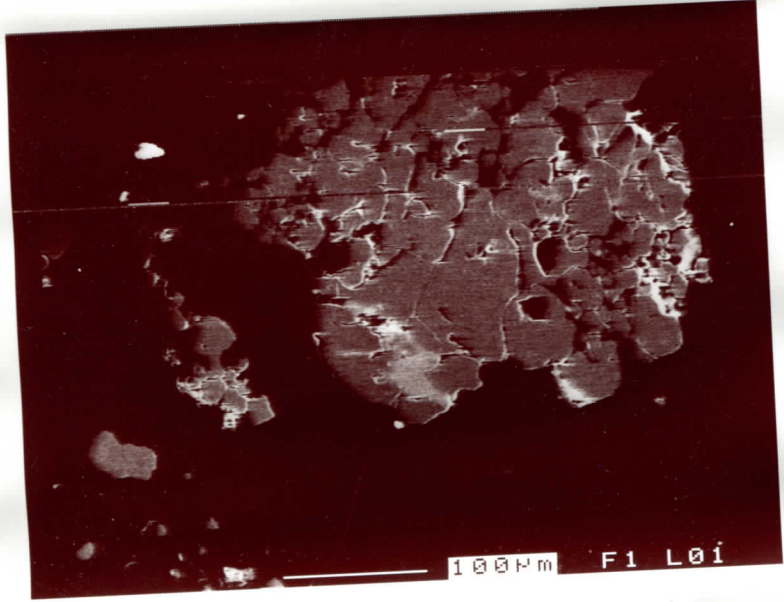
X=368  
Y=336.5



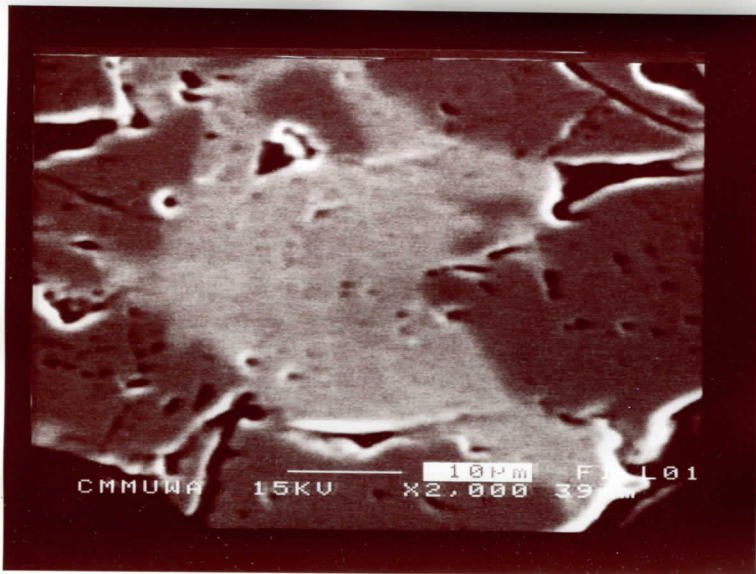


Y=139.5  
X=159

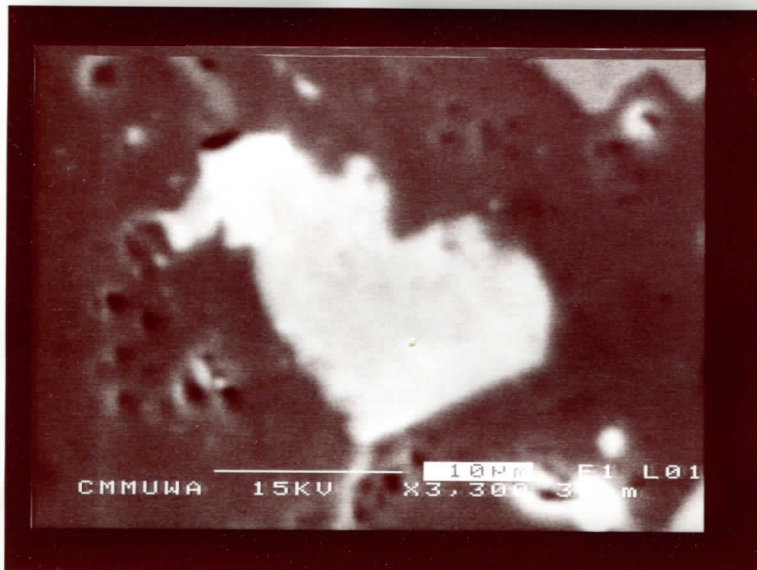


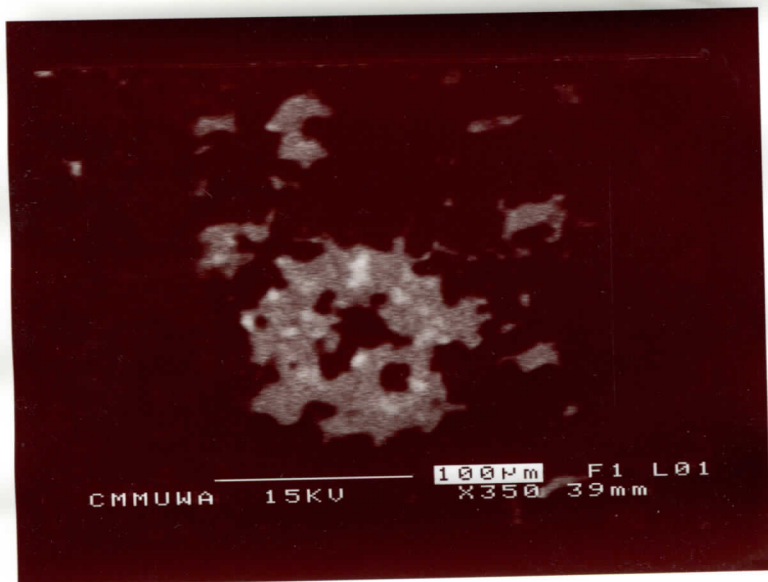
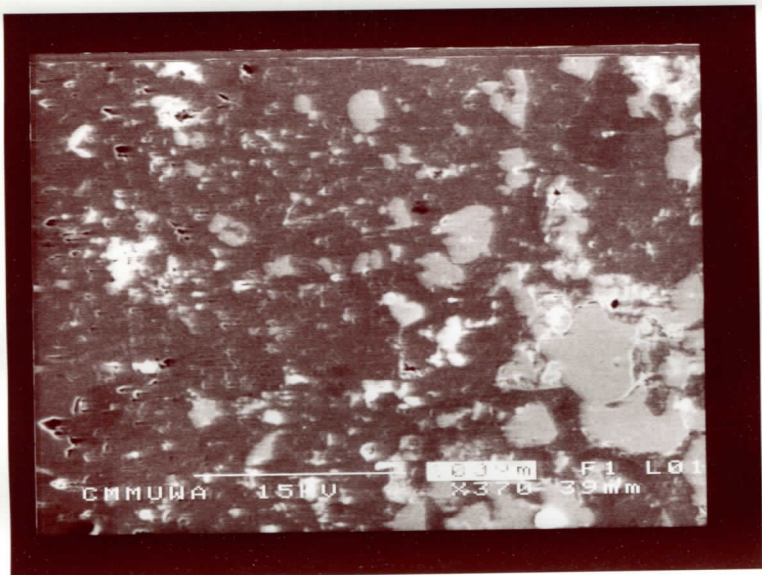


xeno 1

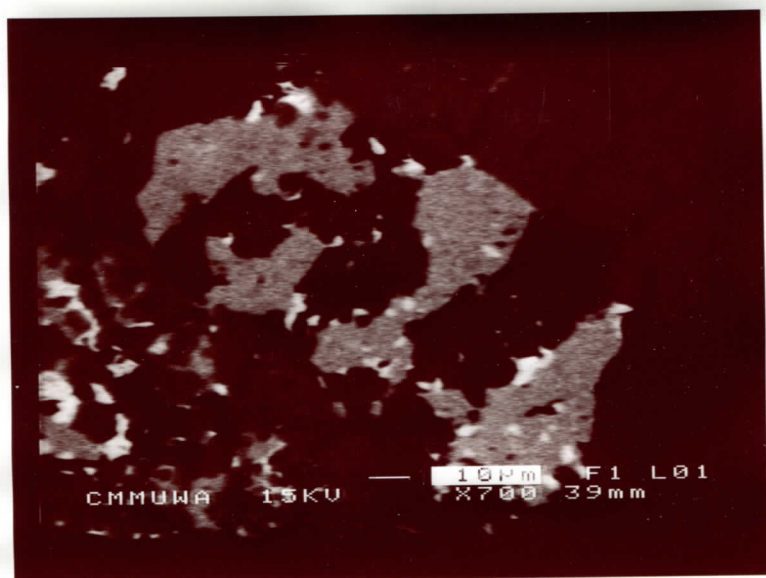


xeno 1



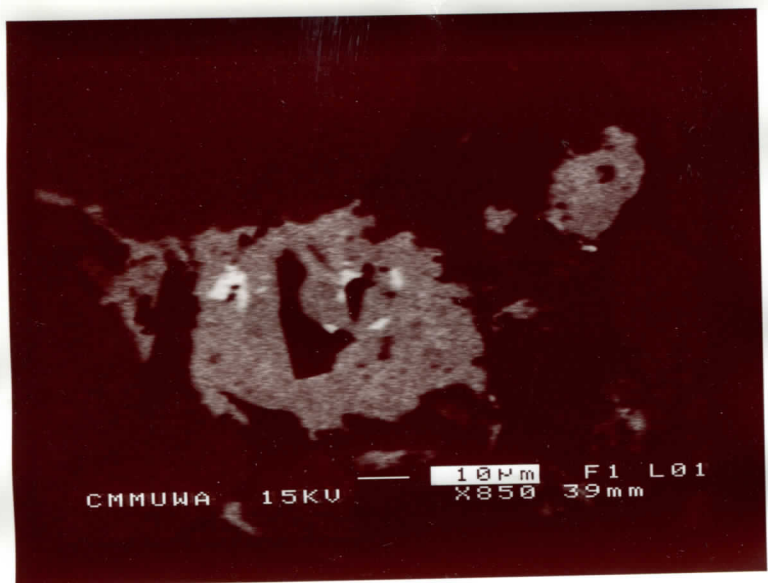


X=361  
Y=407

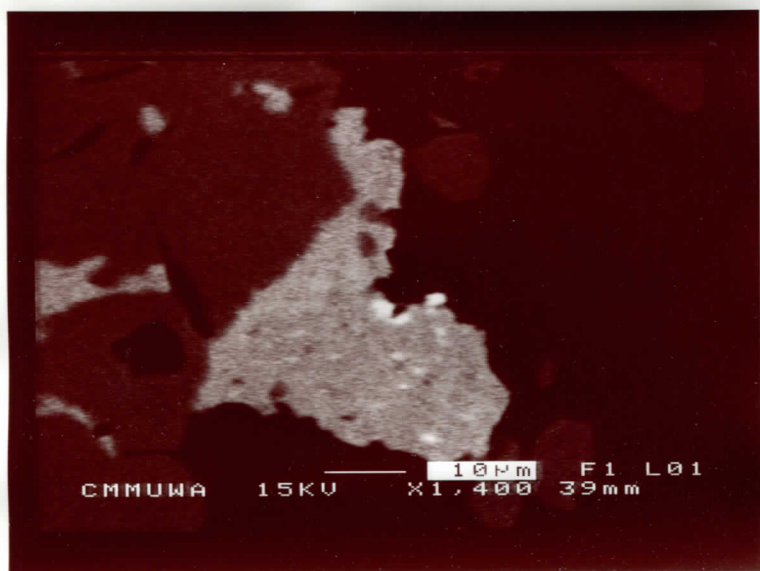


X=334  
Y=343

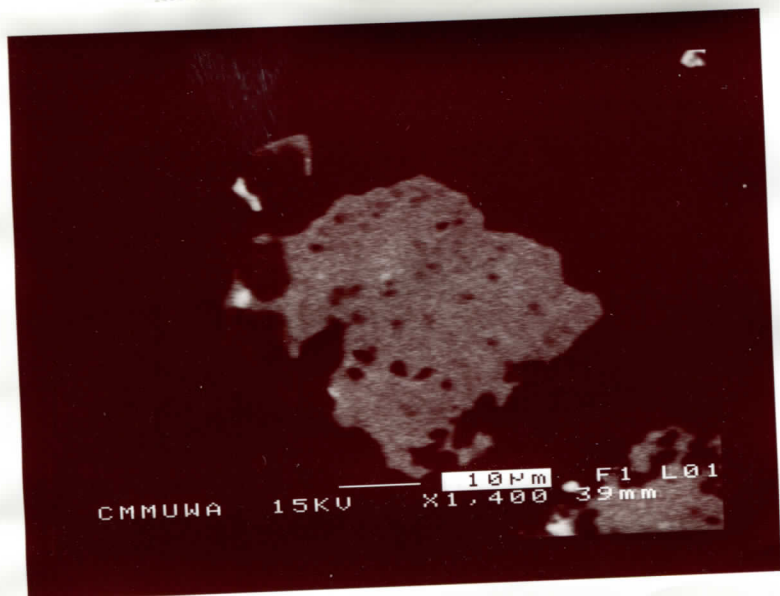




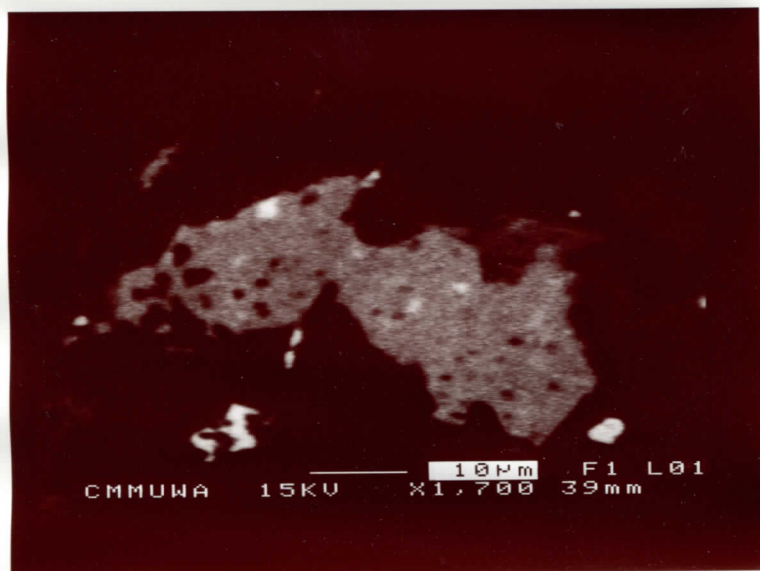
X = 382  
Y = 337.5



X = 345.5  
Y = 363

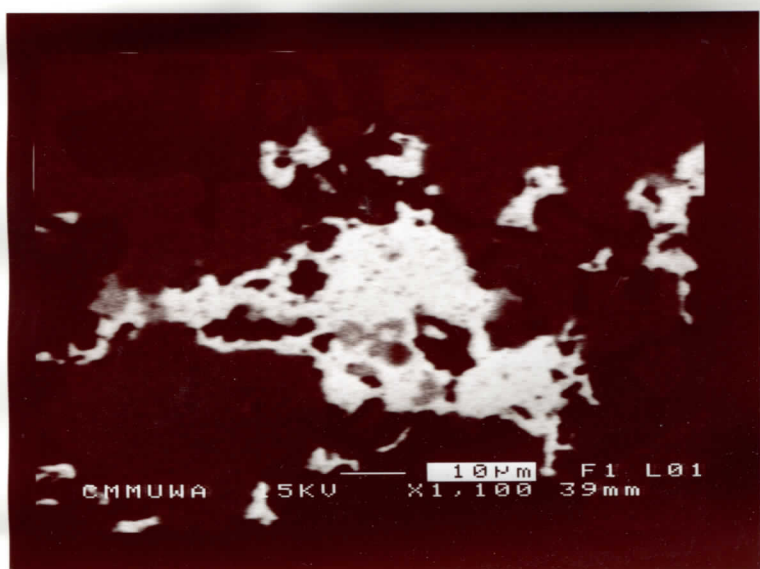


X = 158  
Y = 154  
Xene.  
bgg



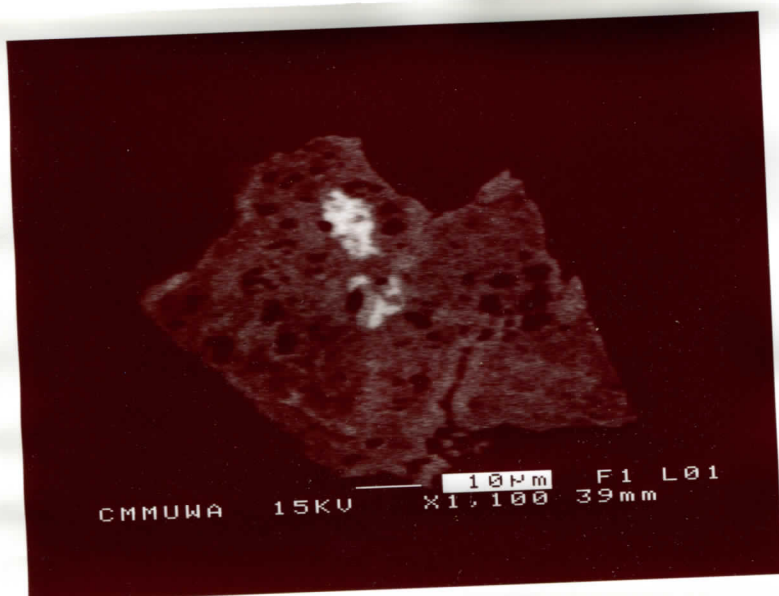
bgt

X=142  
Y=170.5



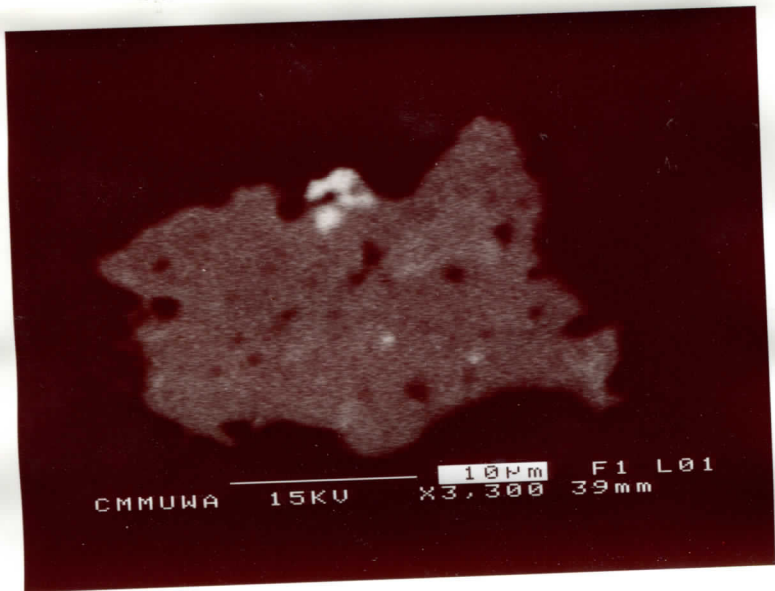
CA2

X=387  
Y=261



X=225  
Y=211





Ze X=216 Photo. YPO4  
Y=126 bgh.

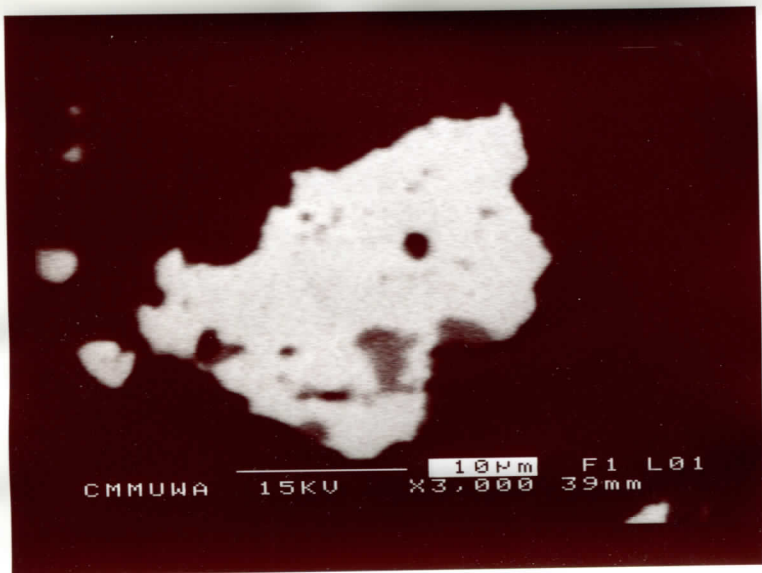
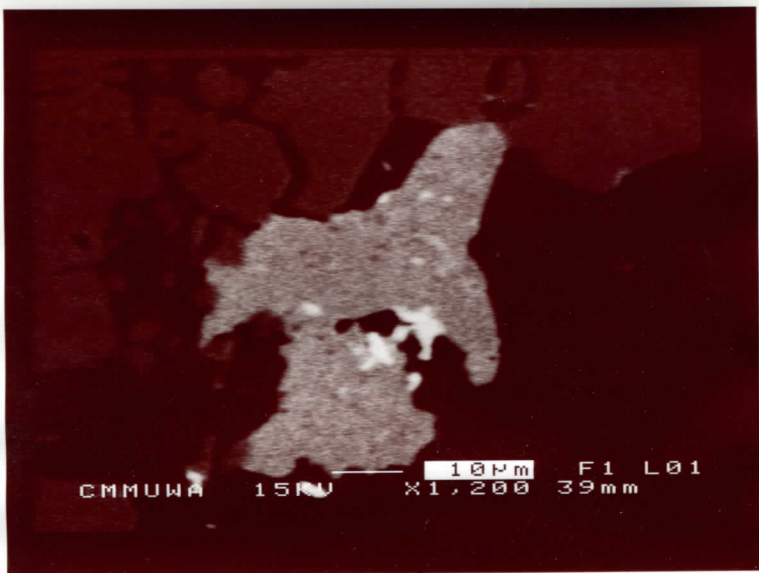
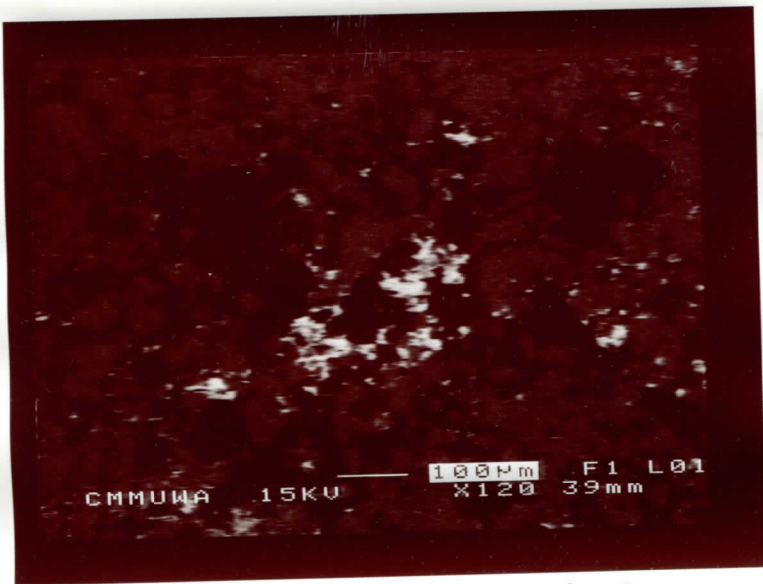


Photo bgh. MnO3.  
X=238.7 Y=124

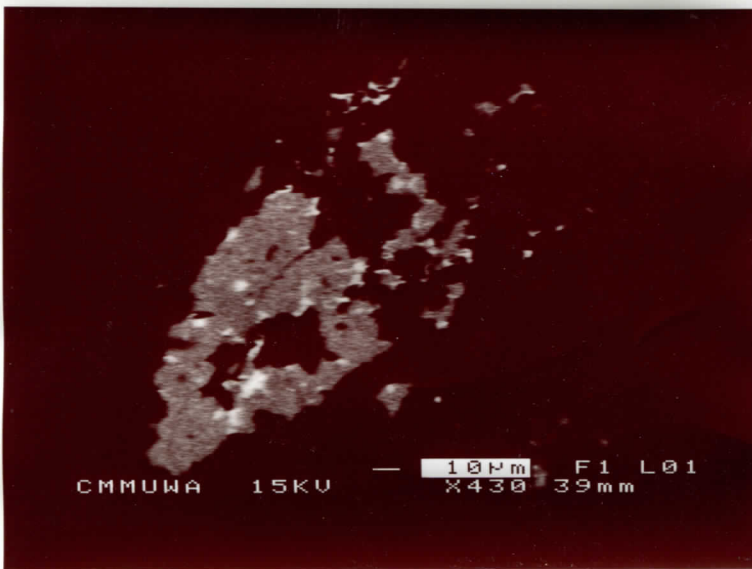


Xeno  
X=368

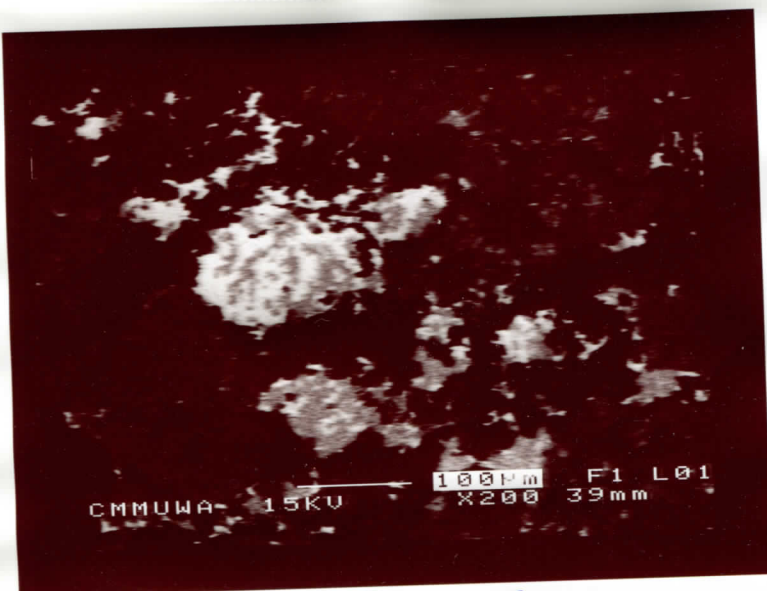


CA

W013



X= 272  
Y= 572

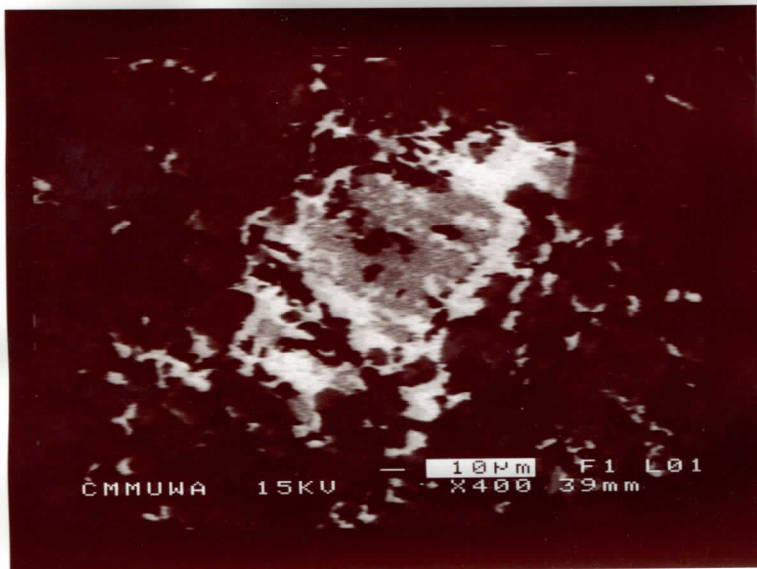


X= 527  
Y= 276.5



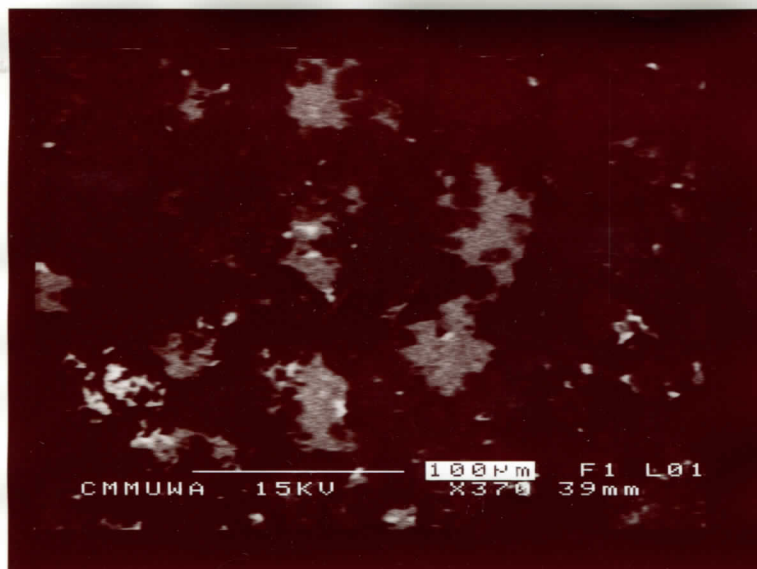
CMMUWA 15KV 100µm F1 L01  
X250 39mm

X=268  
Y=378.5



CMMUWA 15KV 100µm F1 L01  
X400 39mm

XERO + WONG  
X=338 Y=268

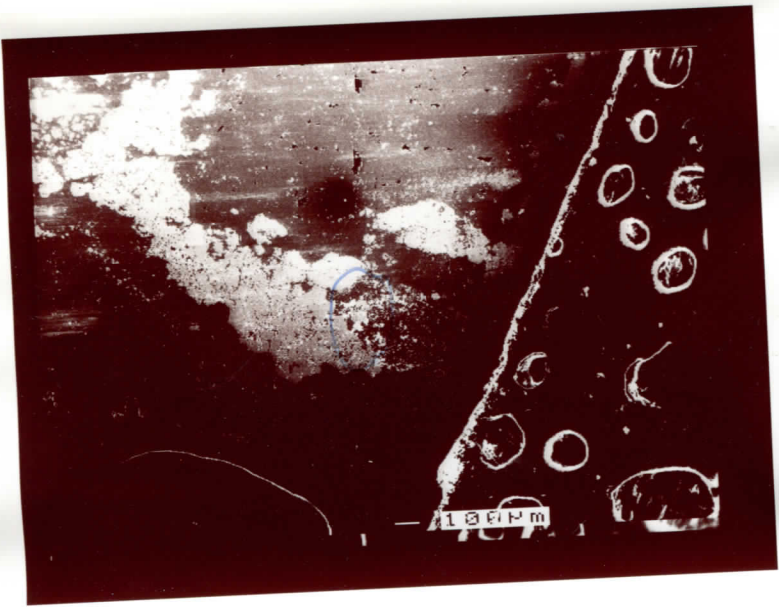


CMMUWA 15KV 100µm F1 L01  
X370 39mm

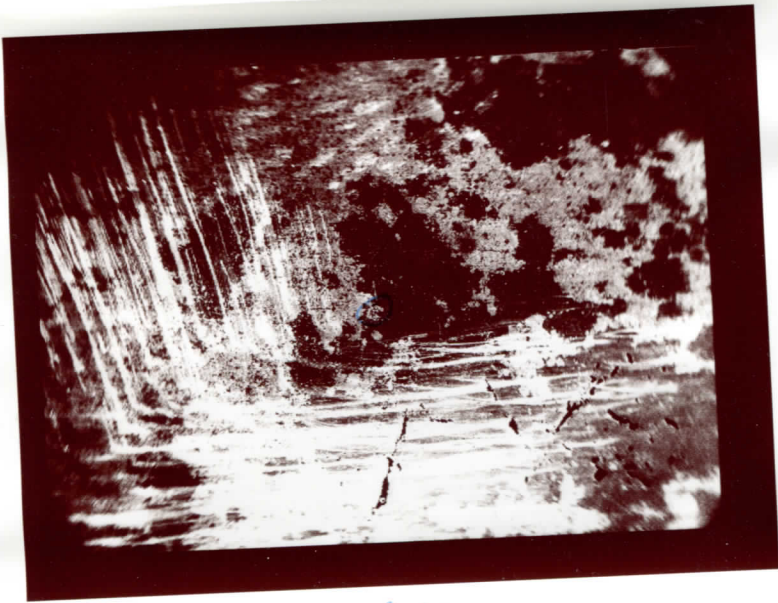
6

X=175.5 XERO  
Y=197 } get all

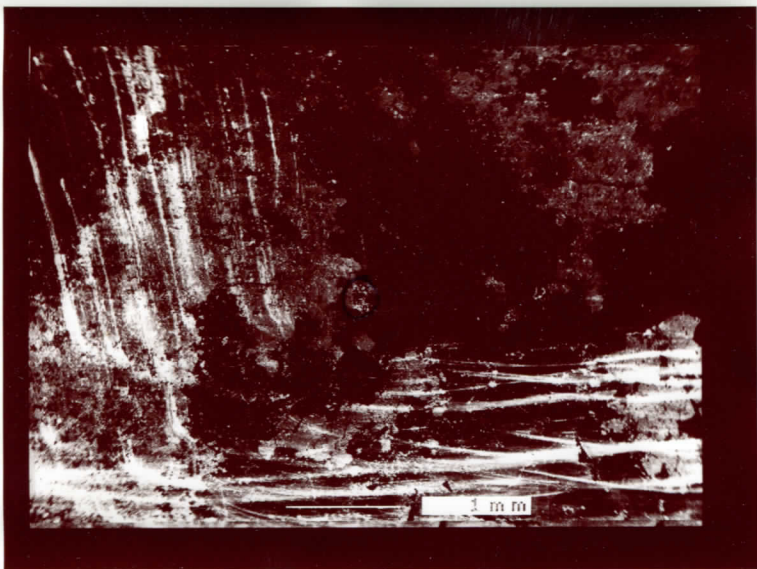




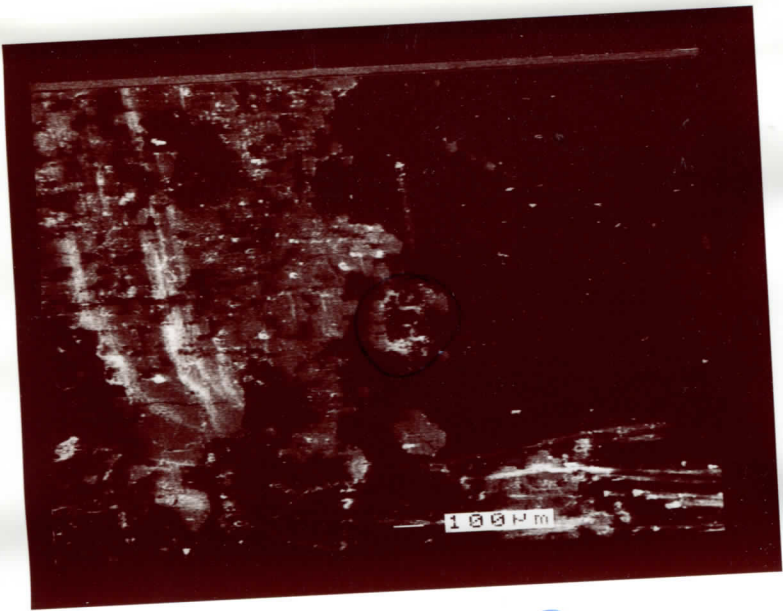
X40



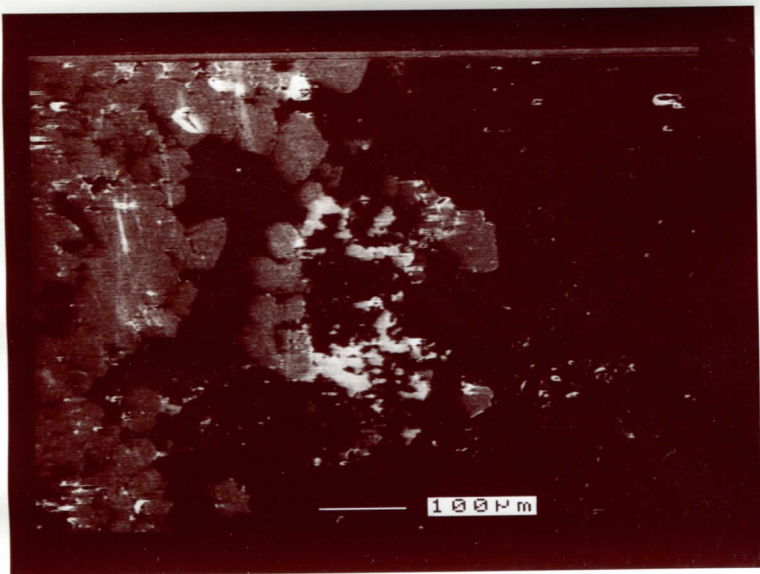
X10



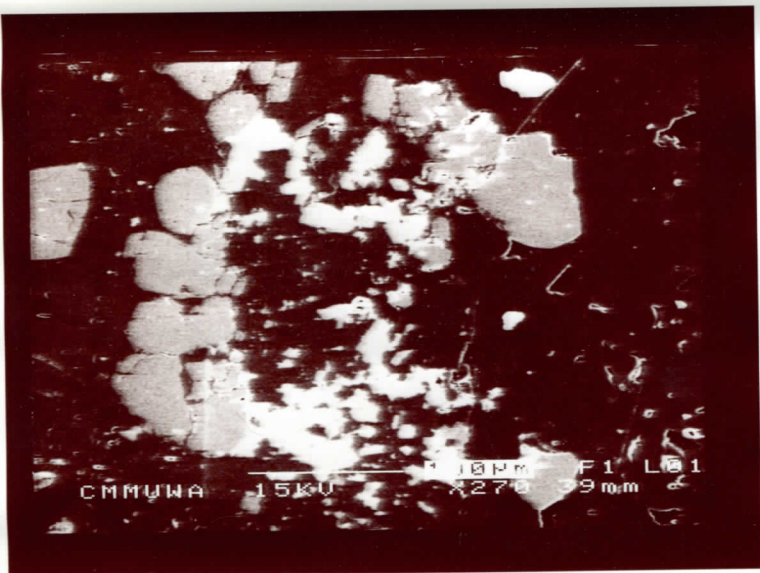
X20



X50

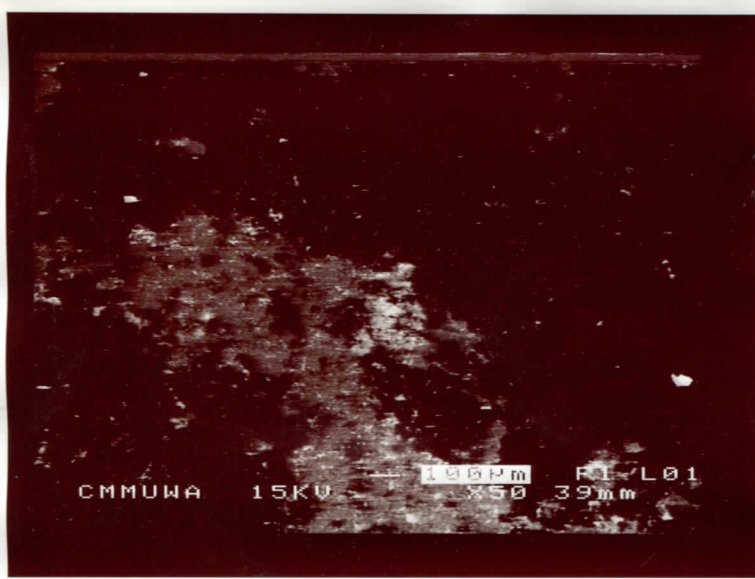


X150

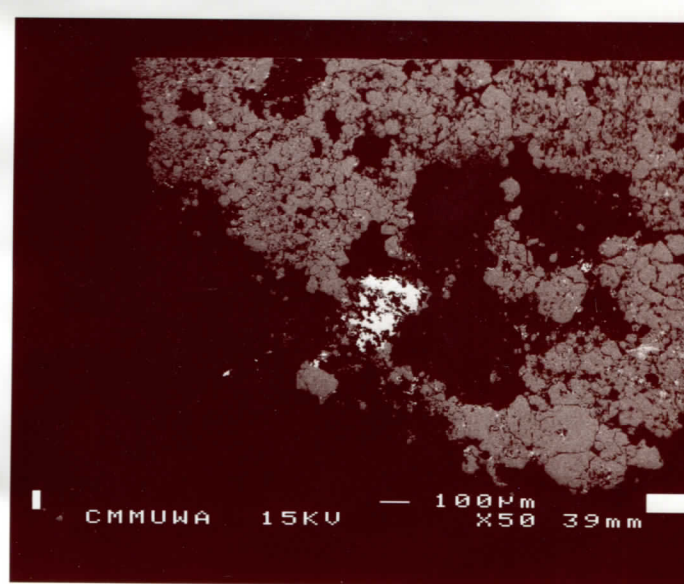


8

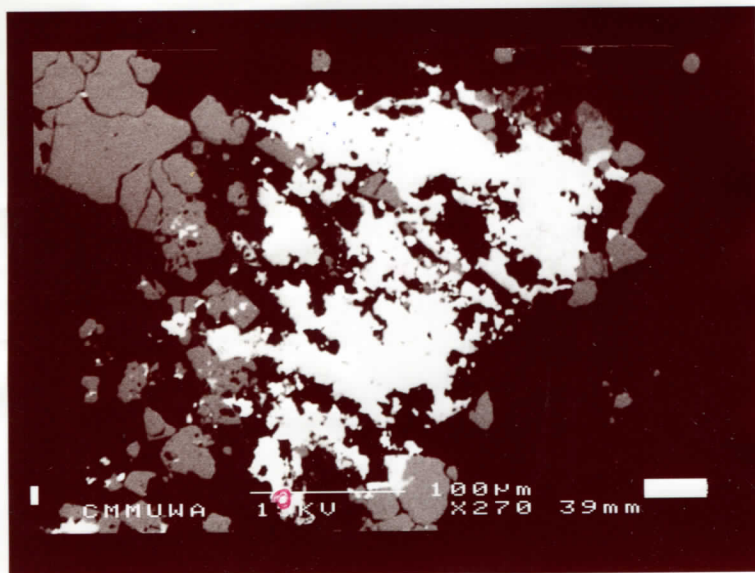




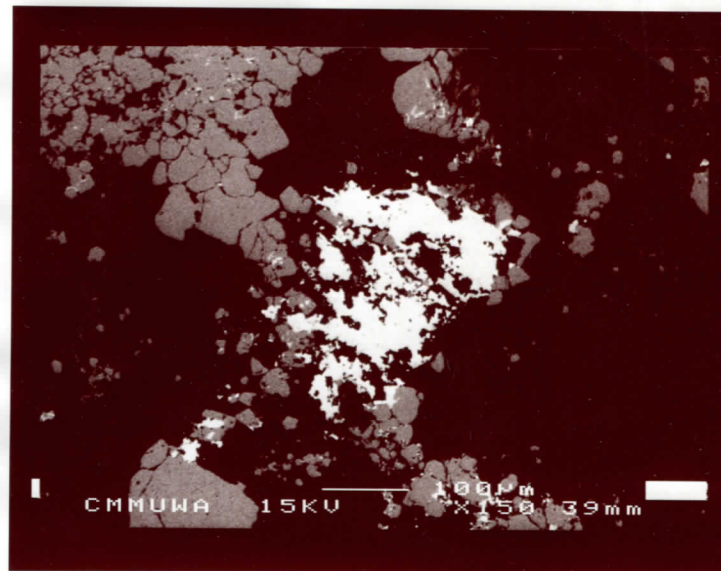
G X= near edge  
Y



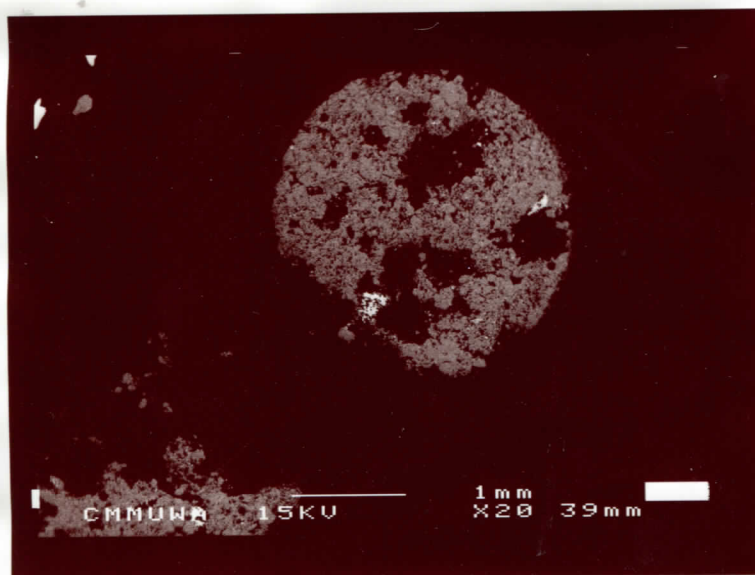
m1



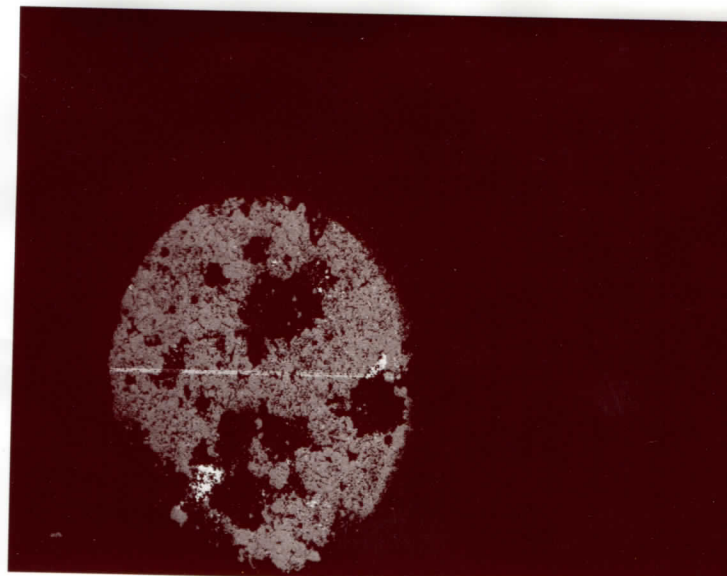
m1-1 m1-2 m1



m1

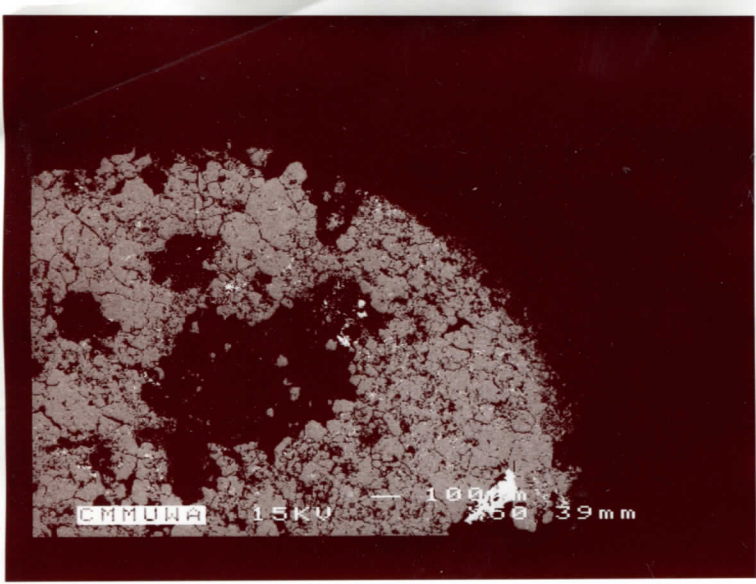


m1

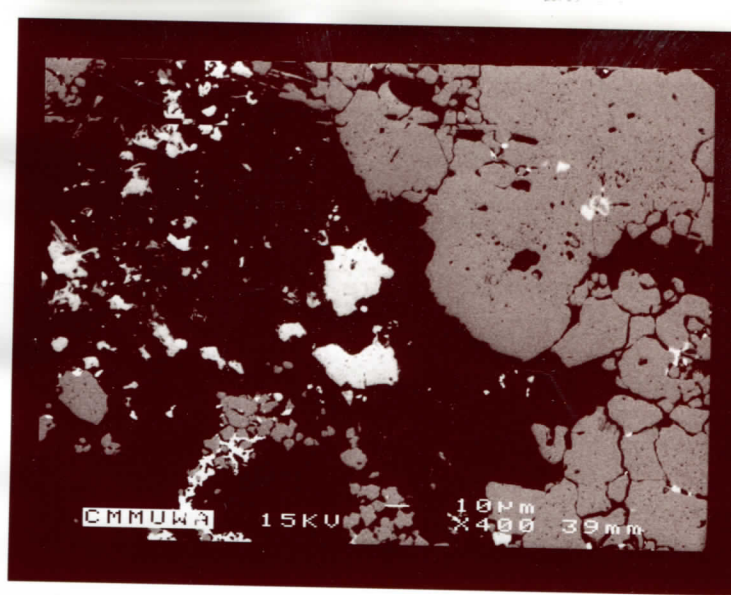


m2

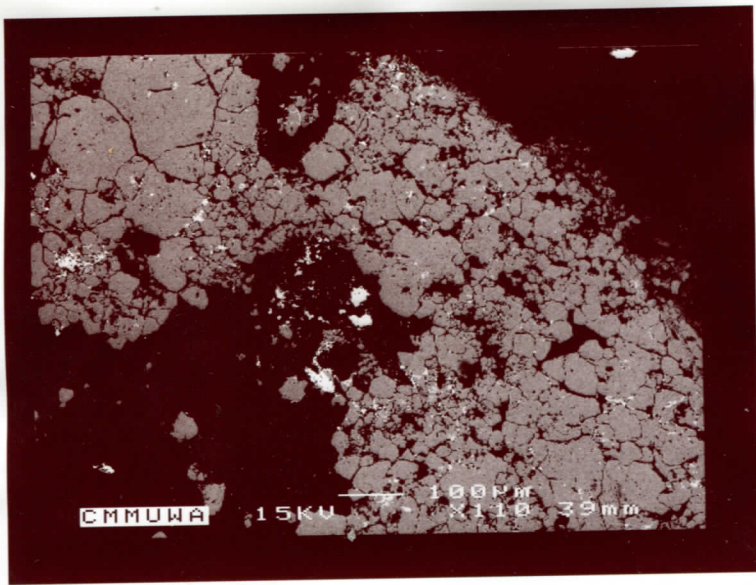




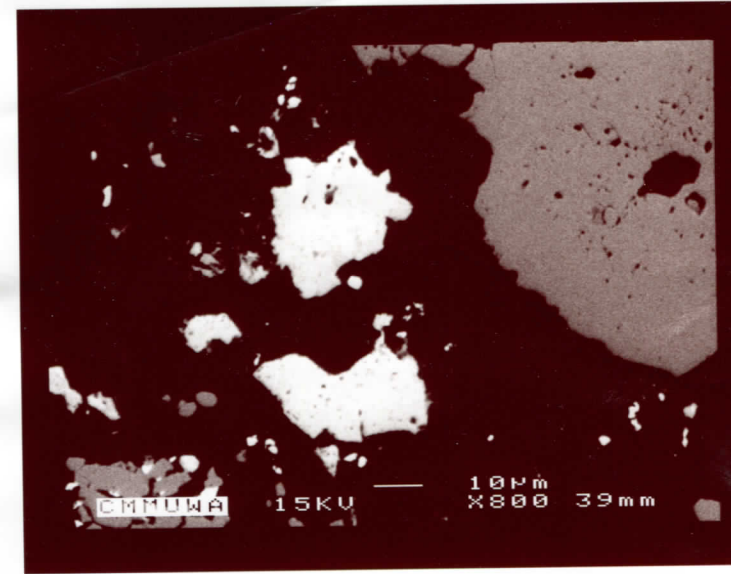
m2



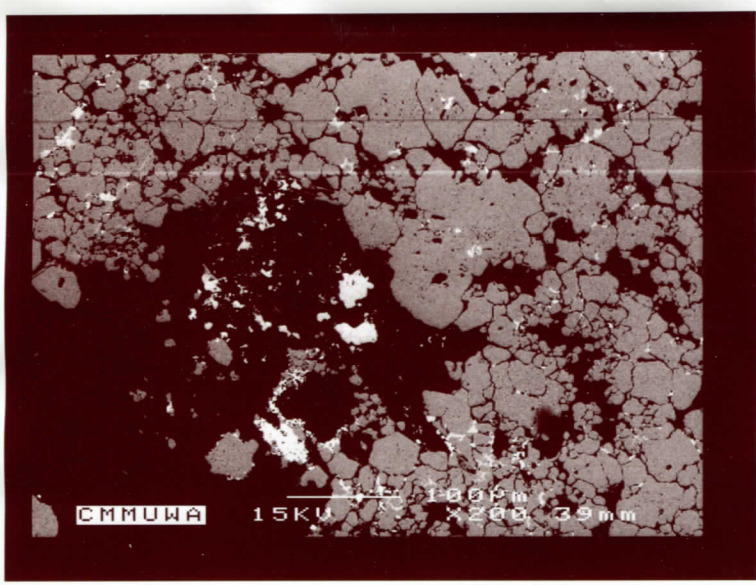
m2



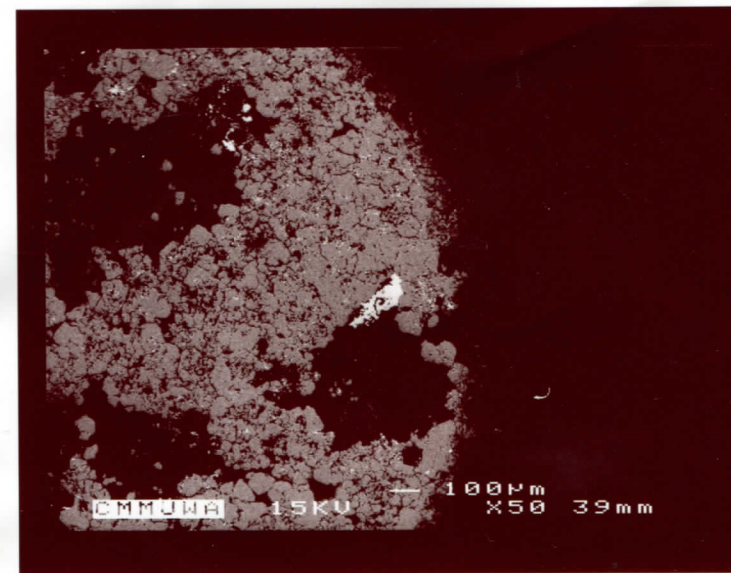
m2



m2

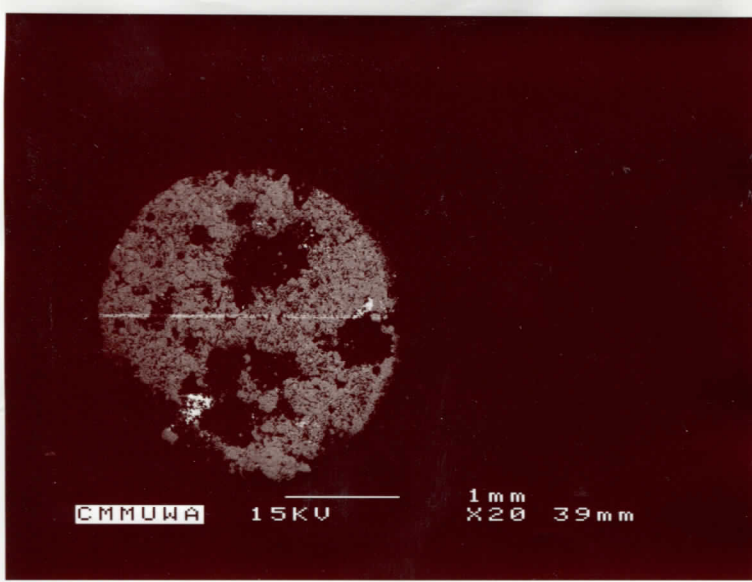


m2

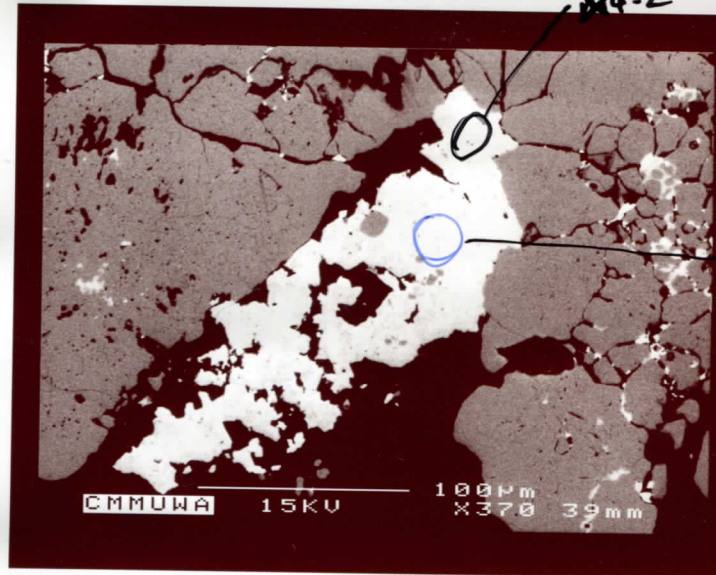


m2

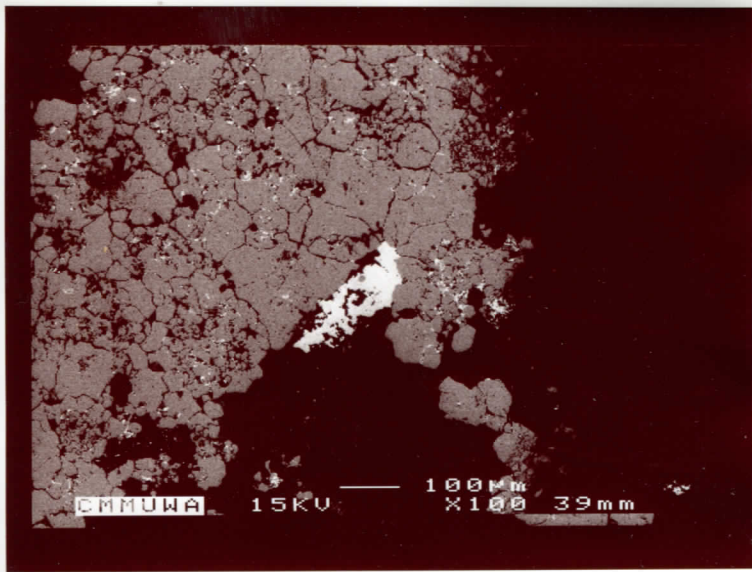




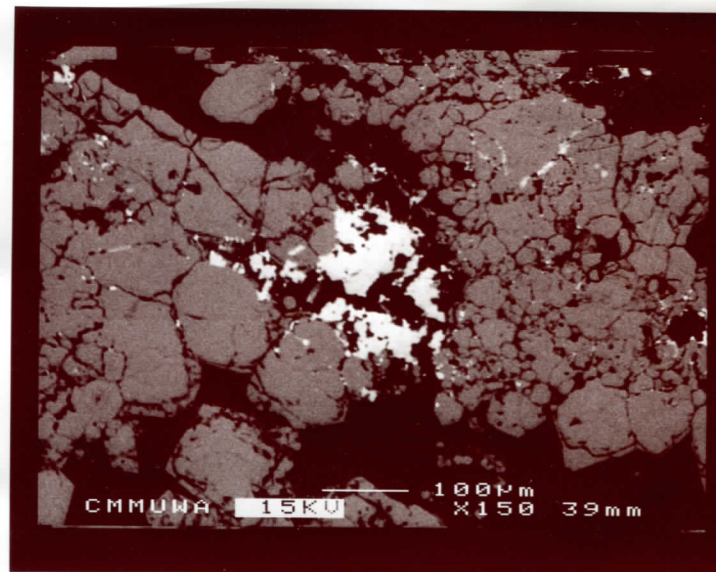
m4



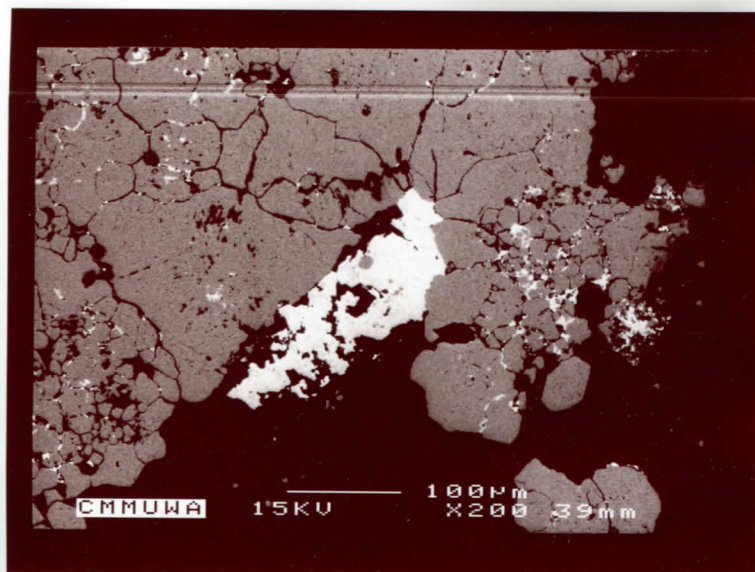
m4



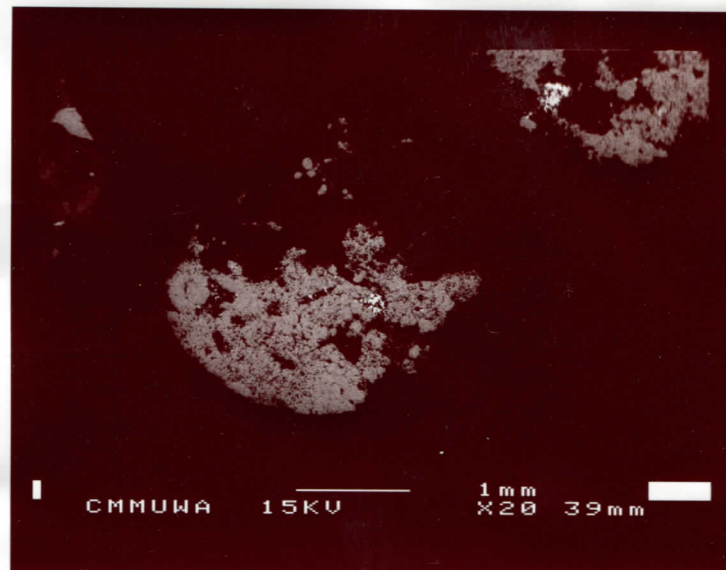
m4



m5

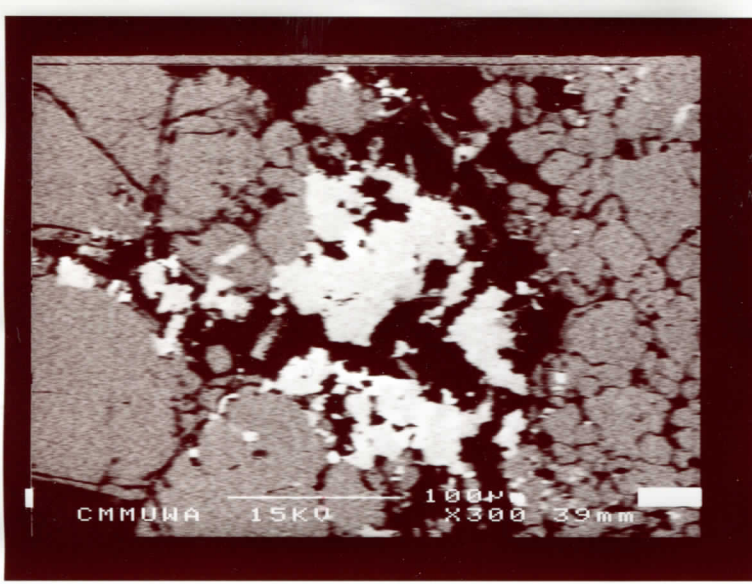


m4

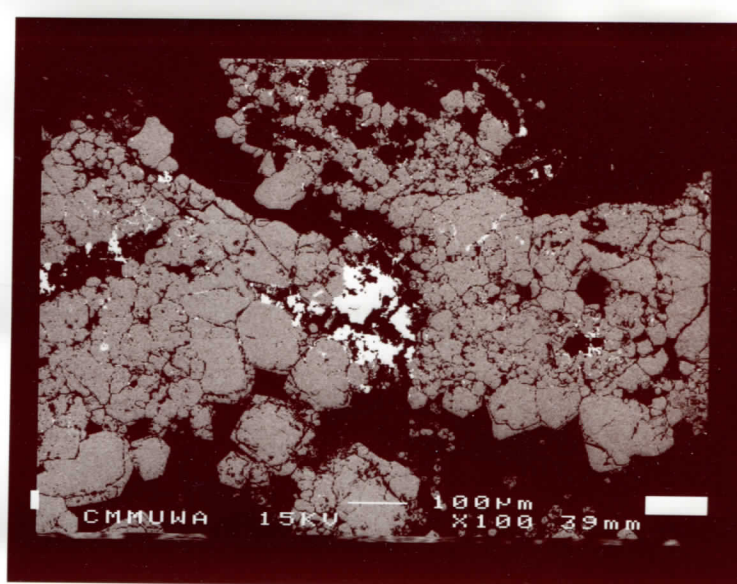


m5

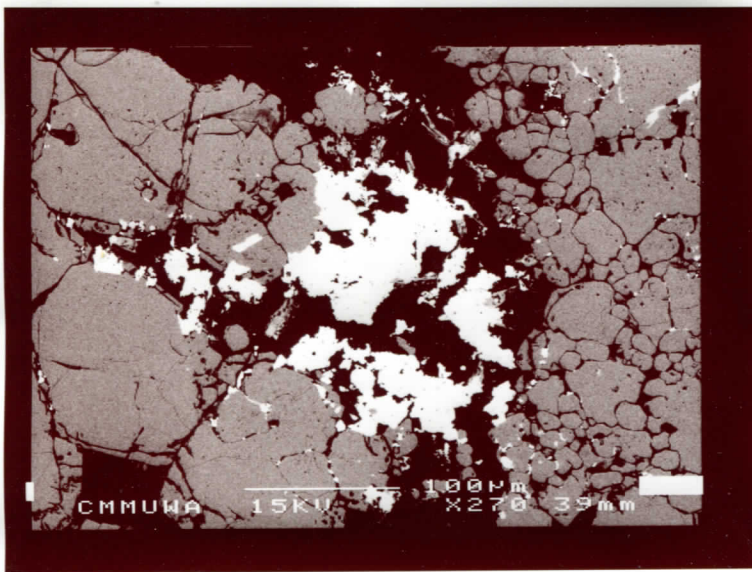




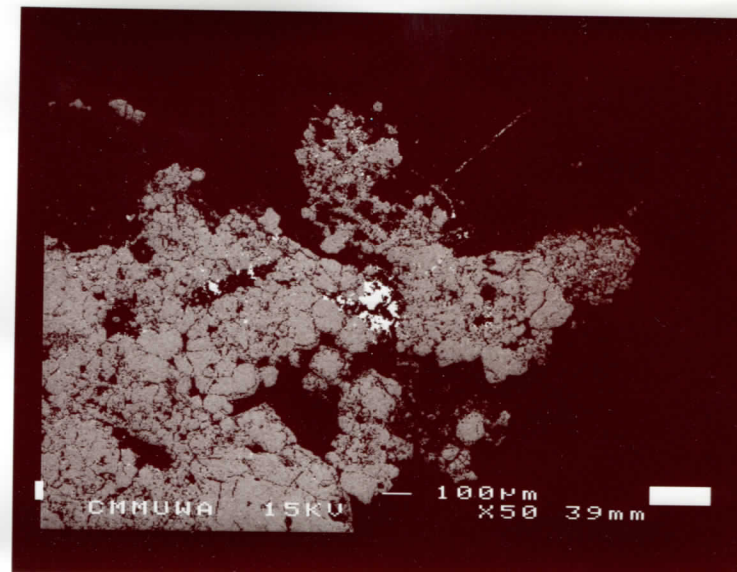
m5



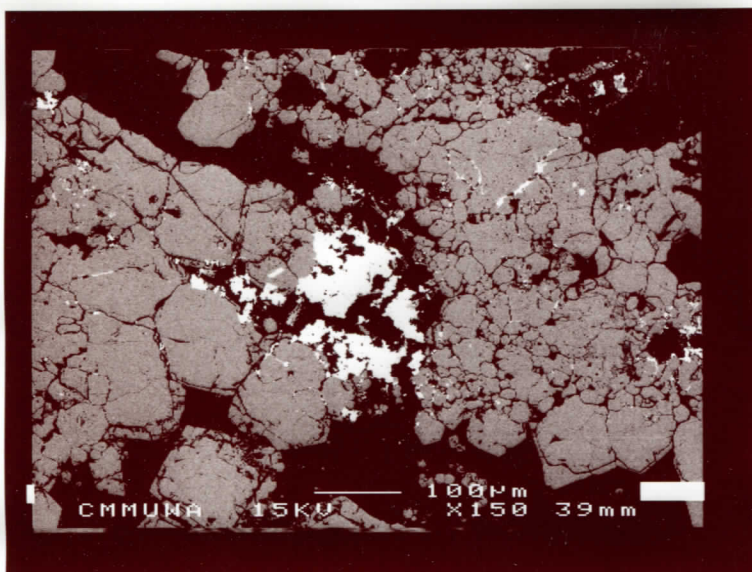
m5



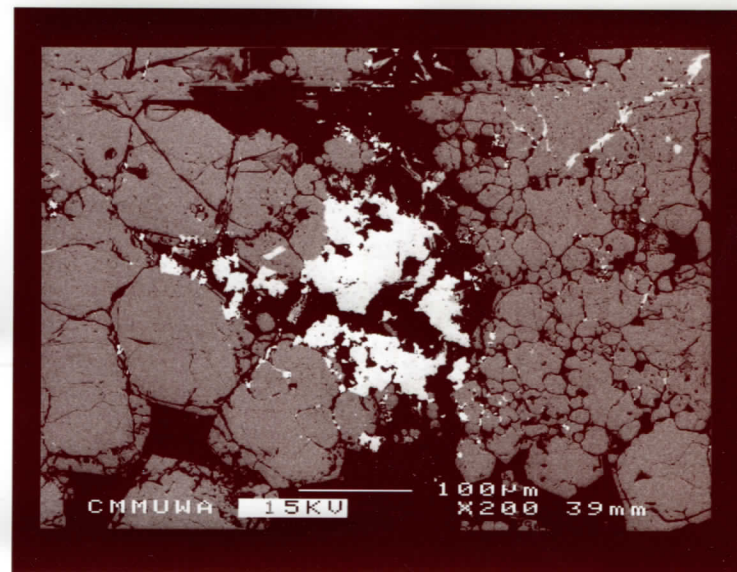
m5



m5

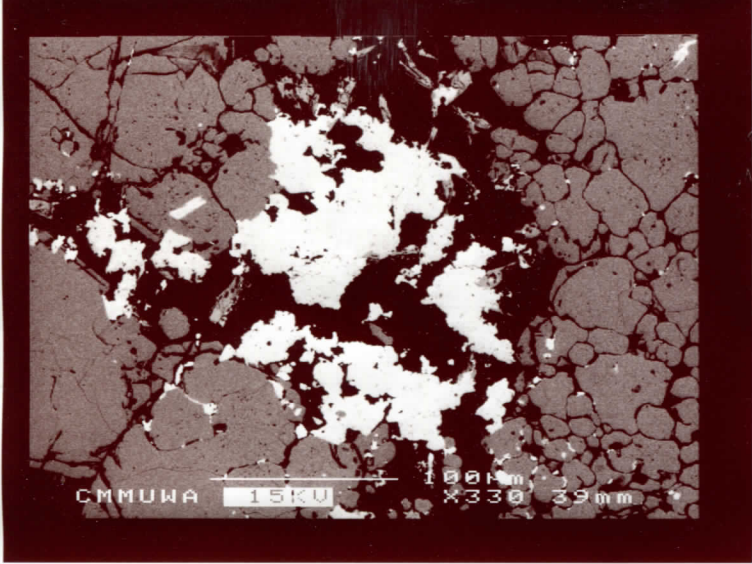


m5

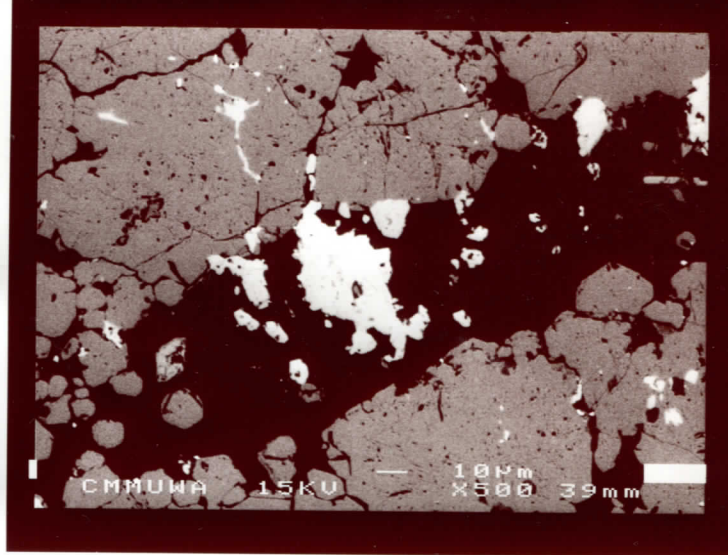


m5

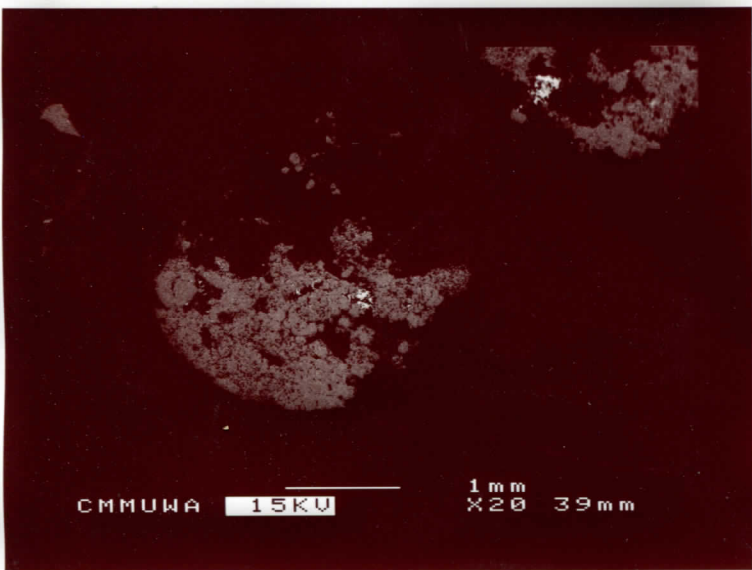




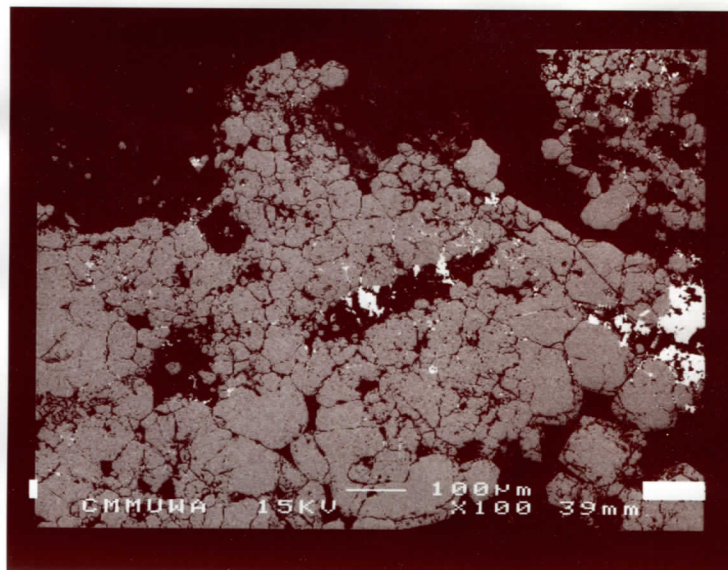
m5



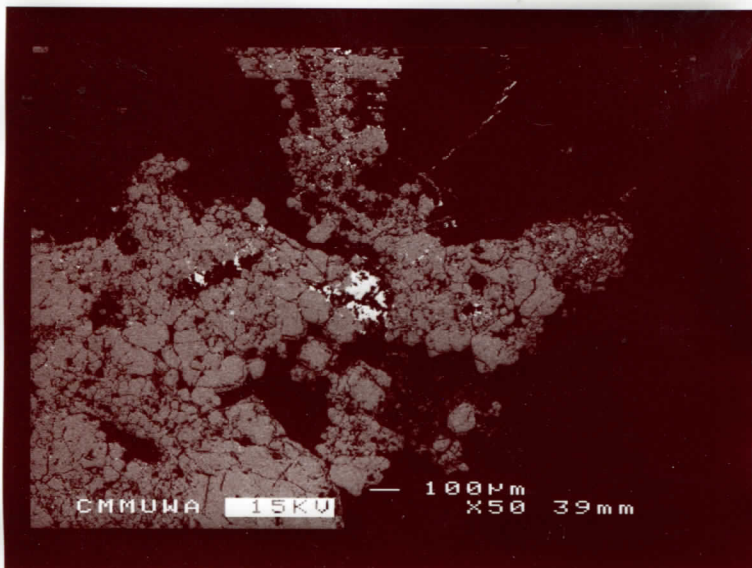
mb



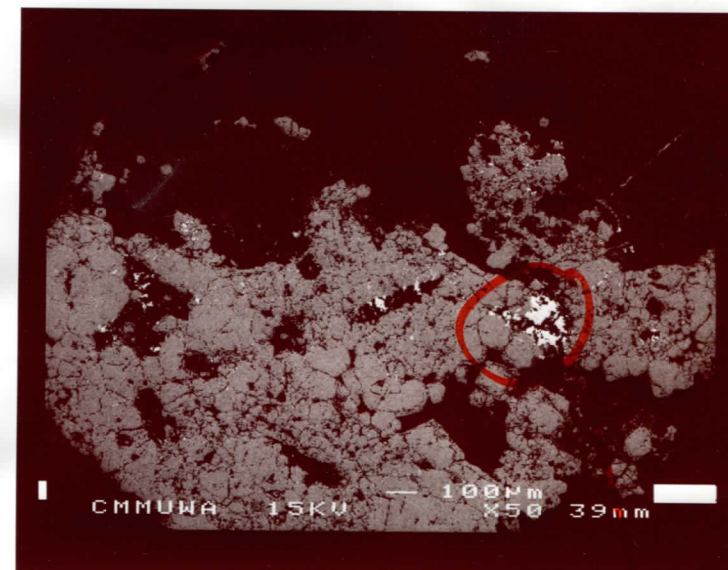
m5



mb



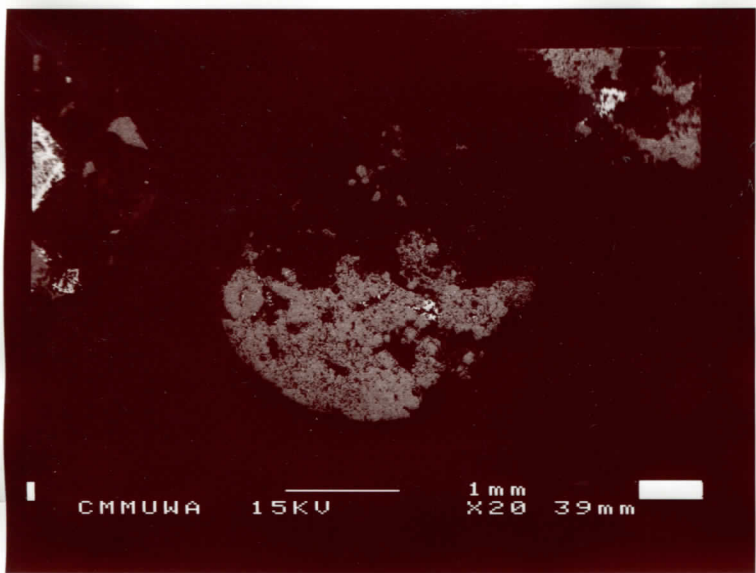
m5



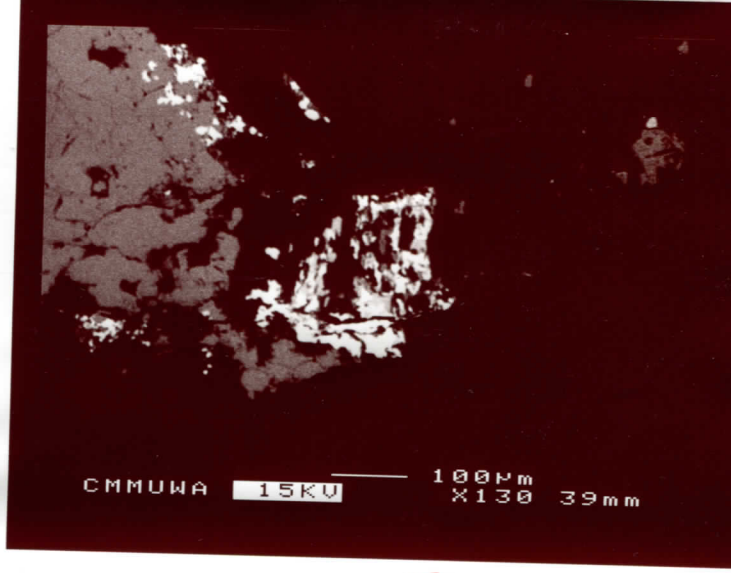
mb

lms

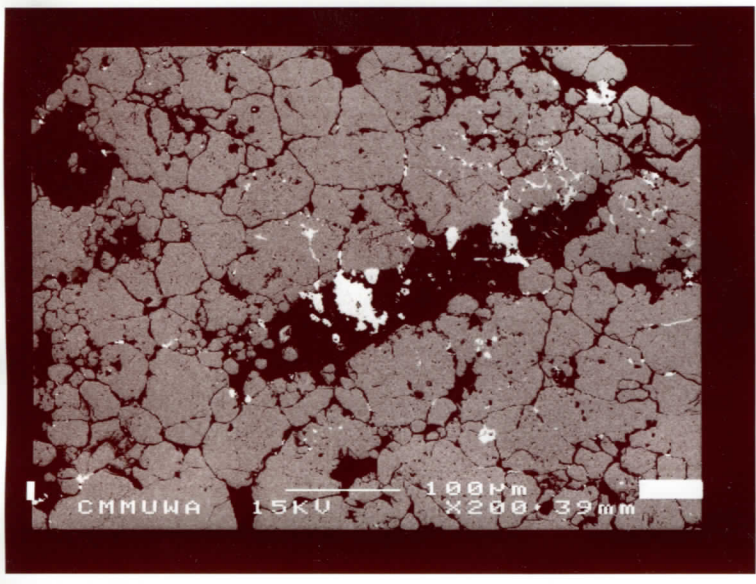




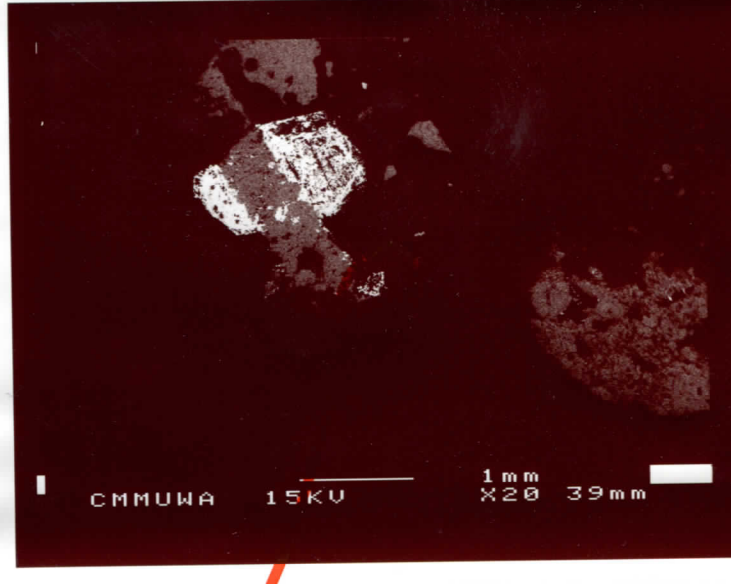
mb



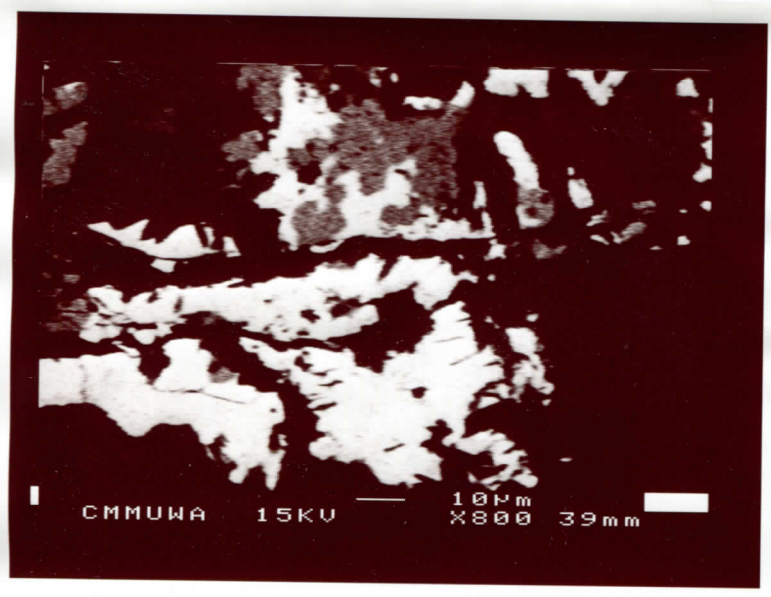
m7



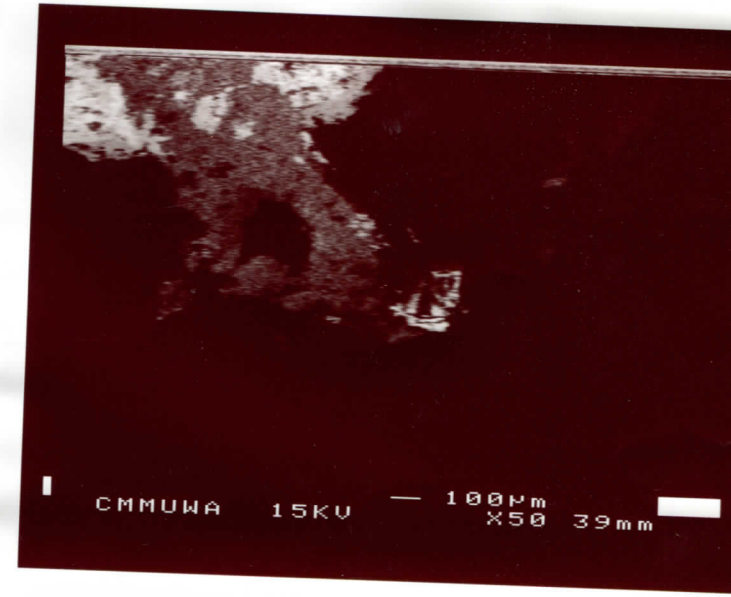
mb



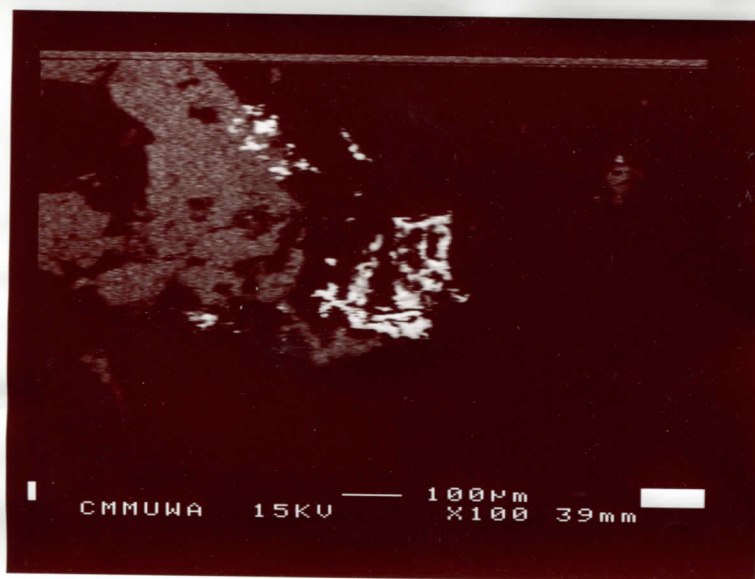
m7



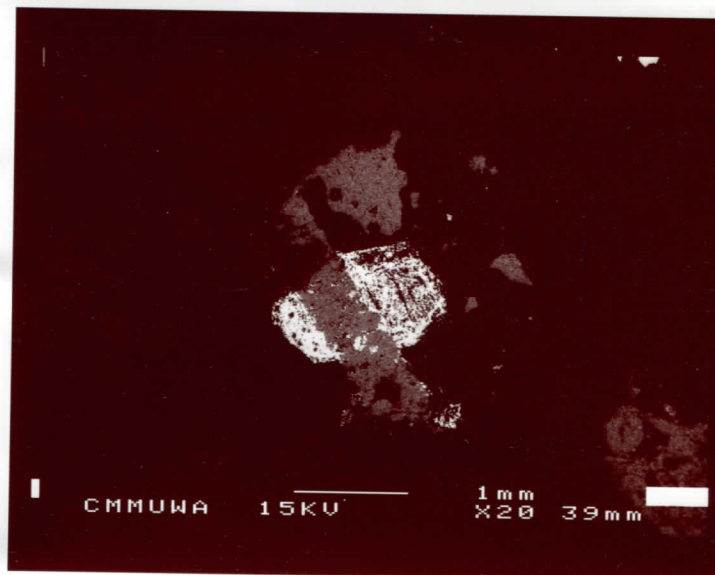
m7



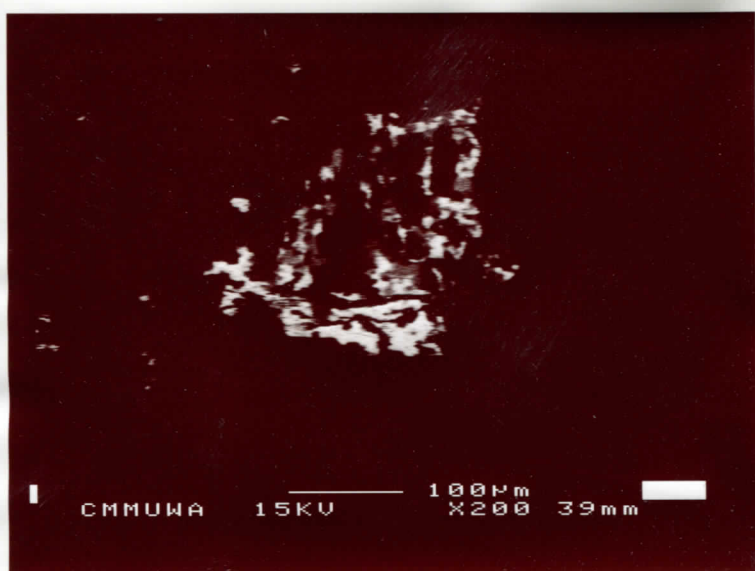
m7



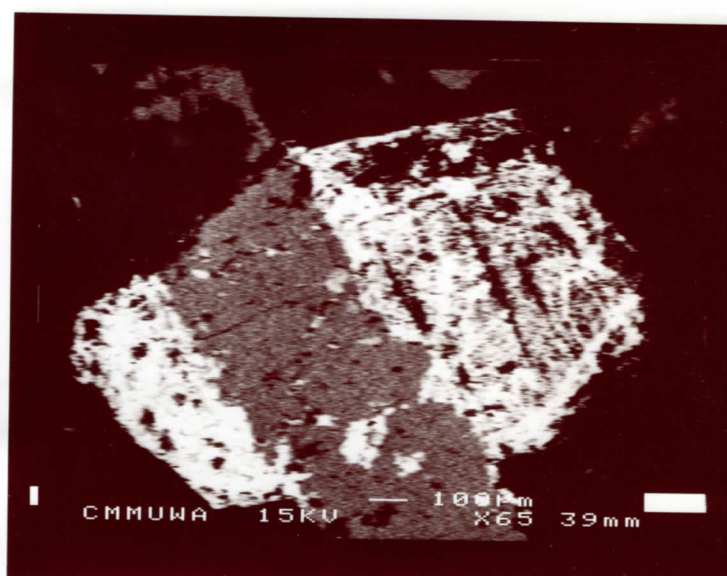
m7



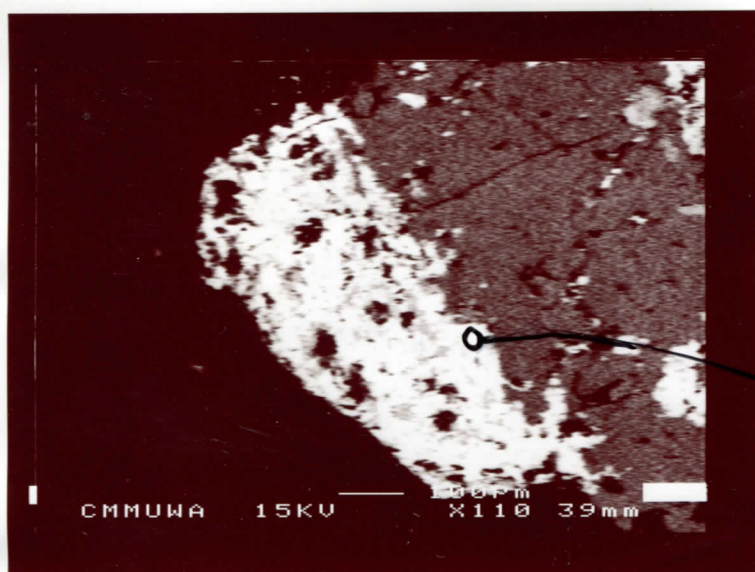
m8



m7

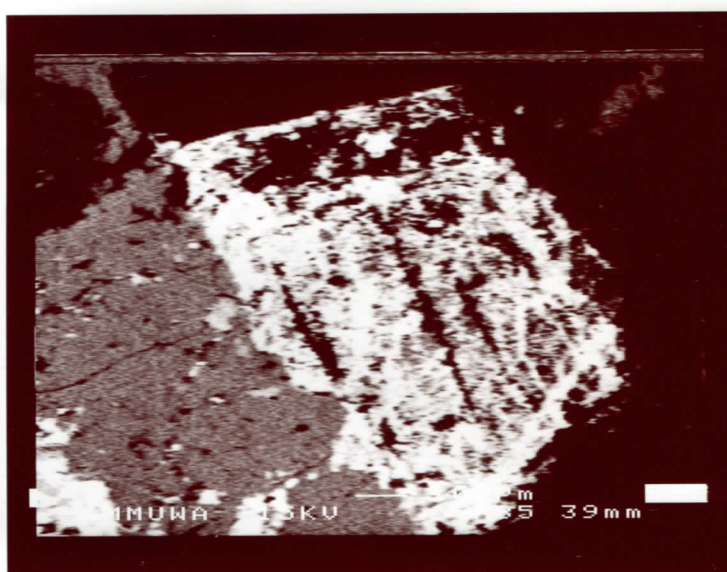


m8



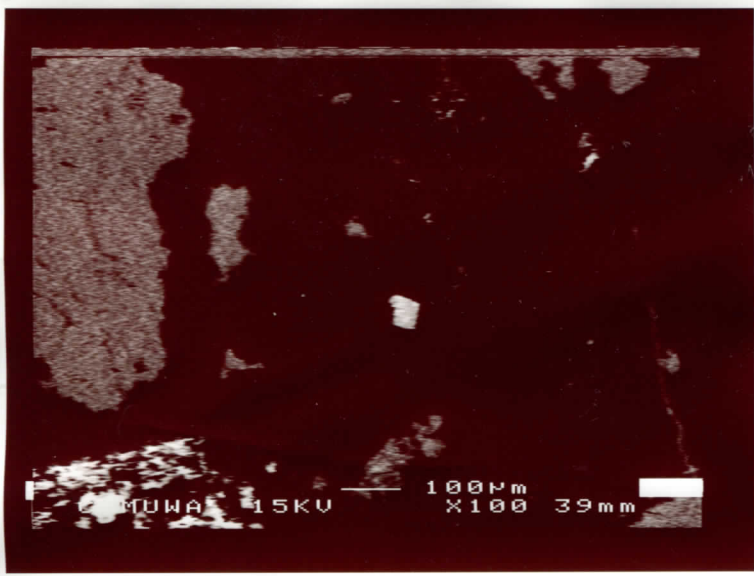
m8

m8-1

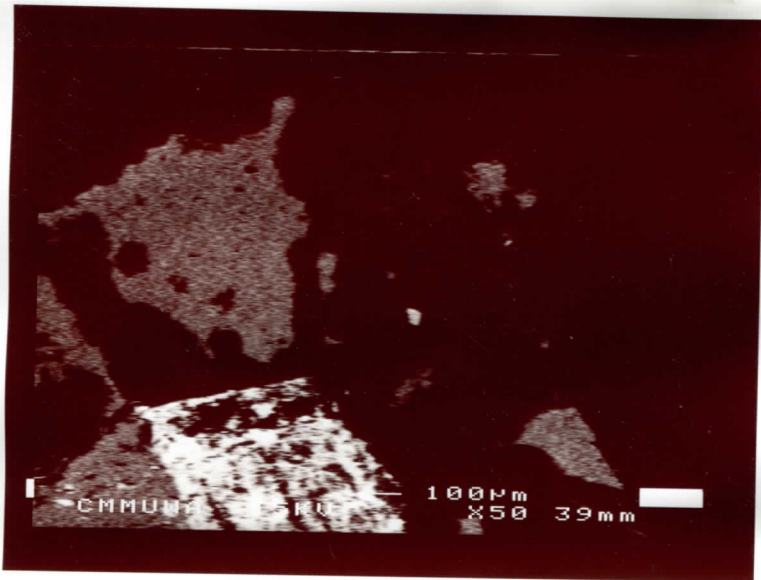


m8





m10

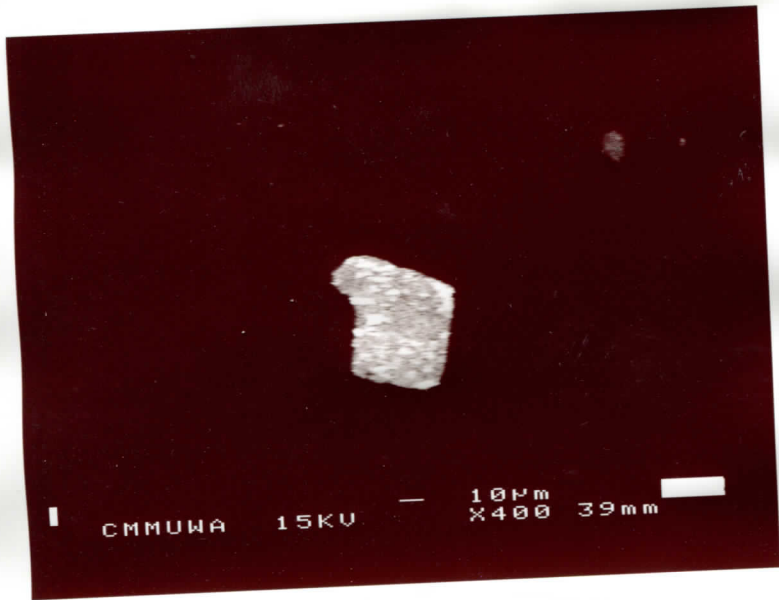


m10

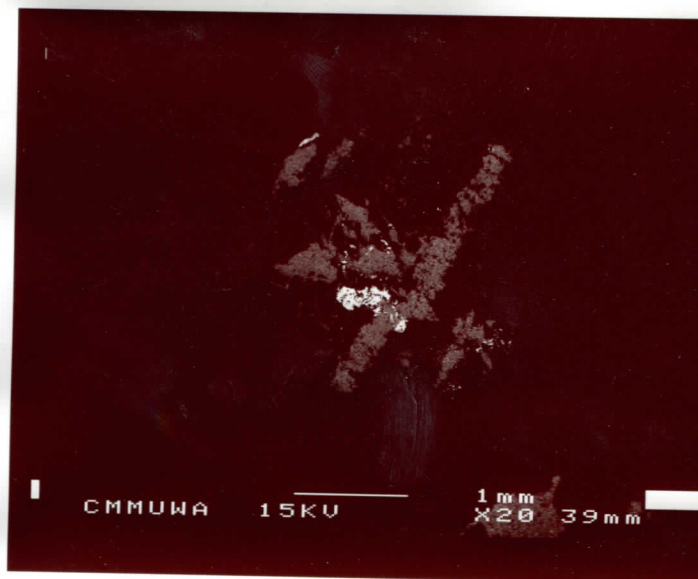


m10

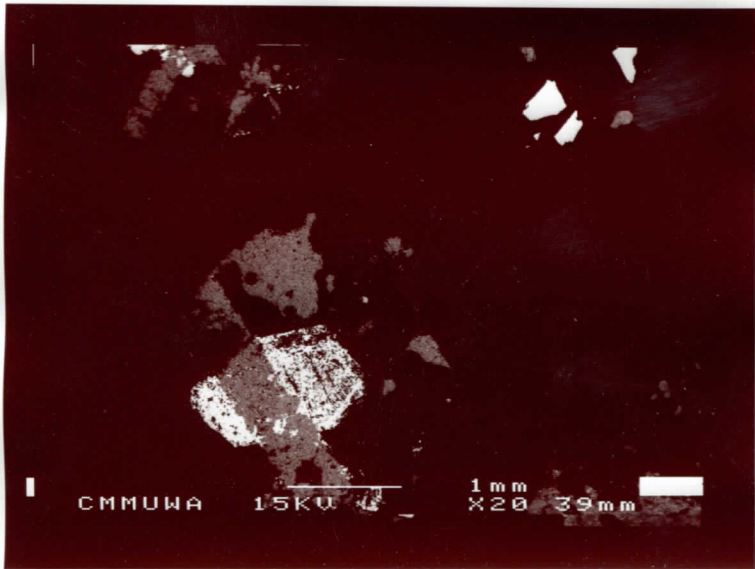




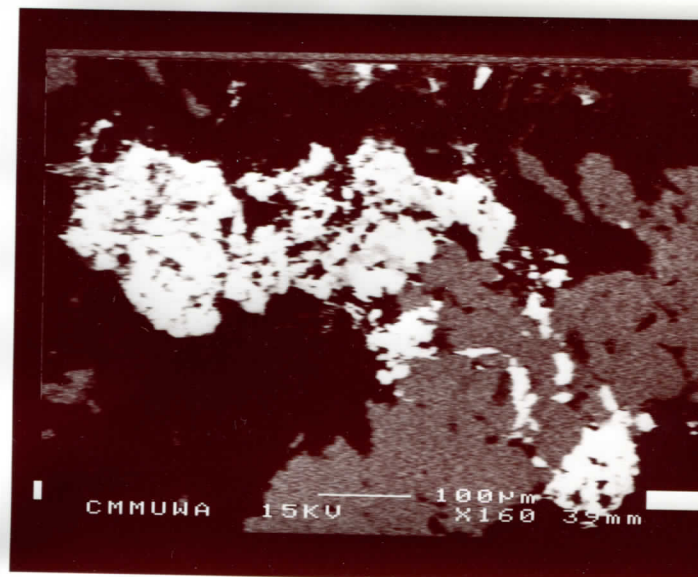
m10



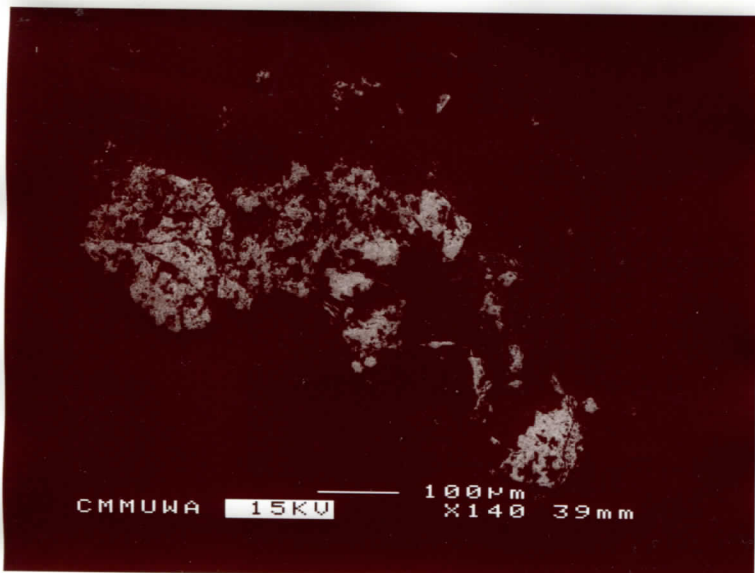
m12



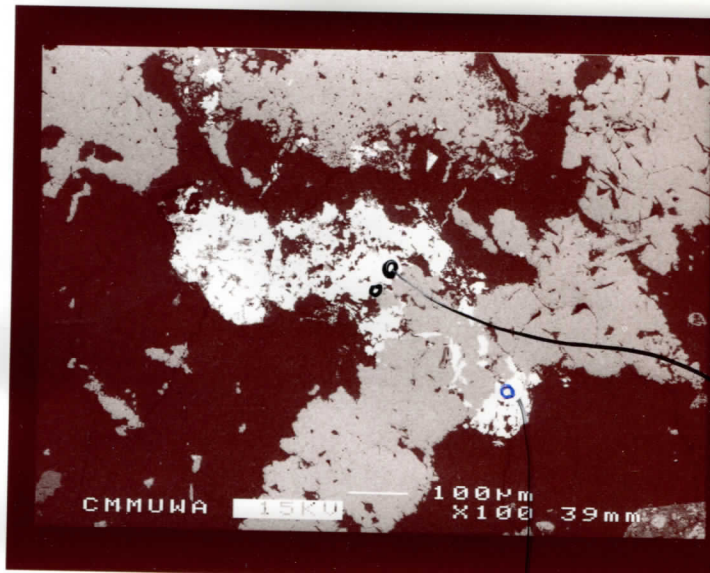
m10



m12

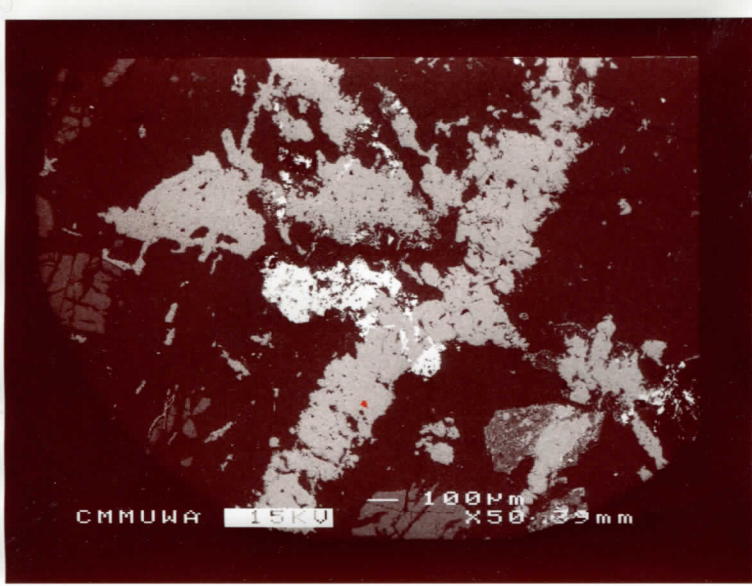


m12

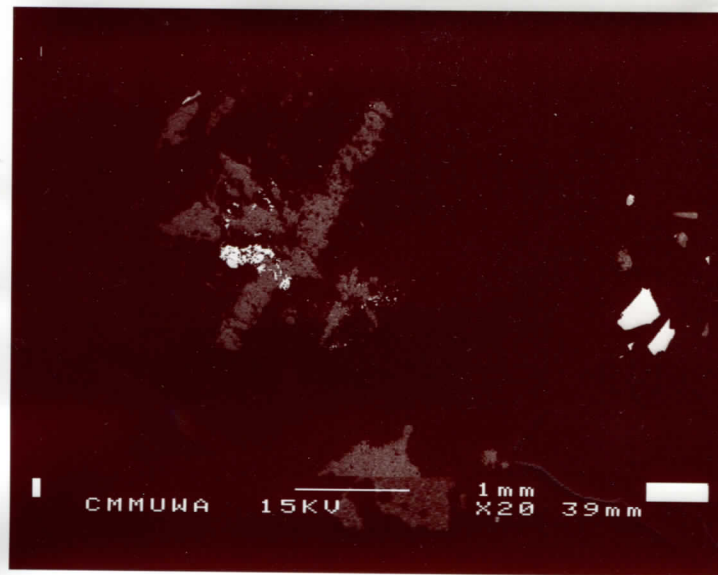


m12

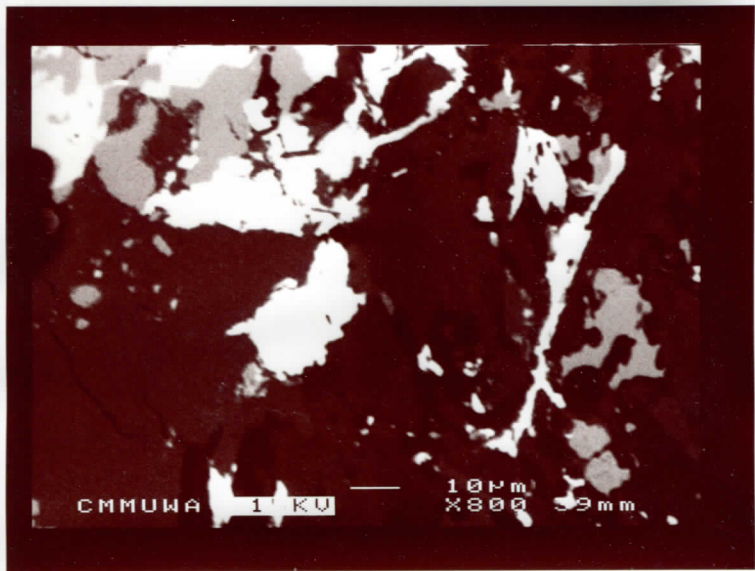
1-CPM



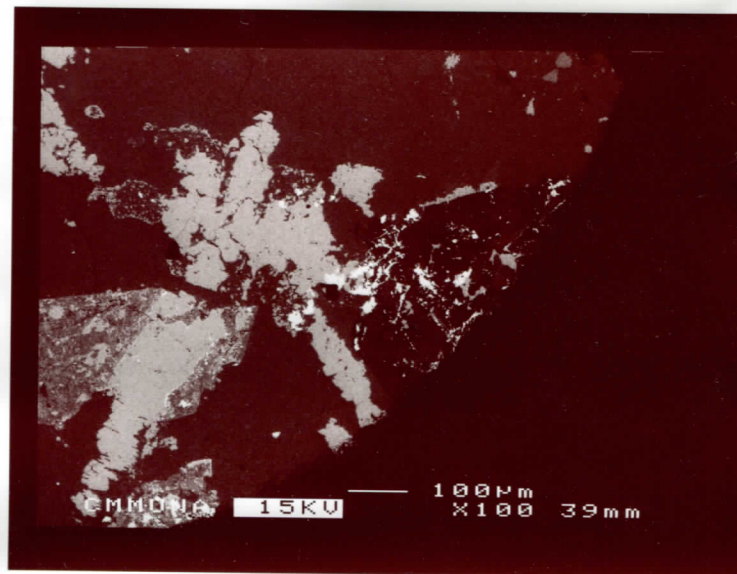
m12



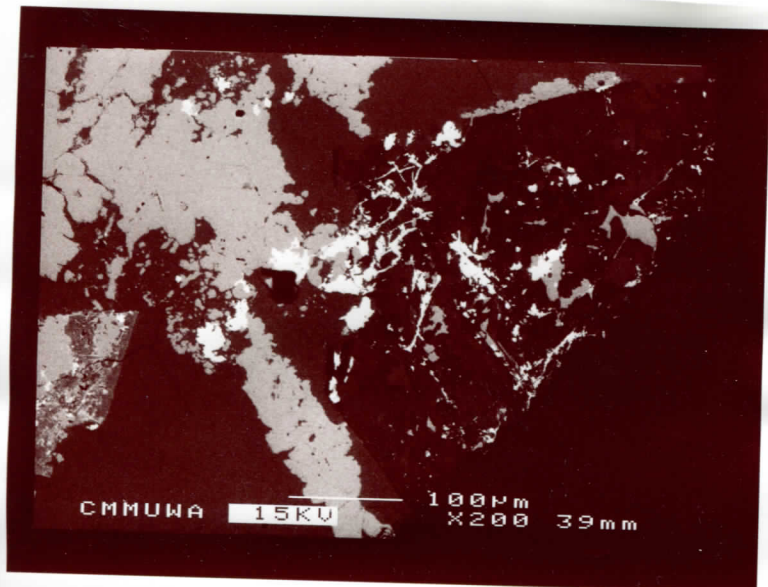
m13



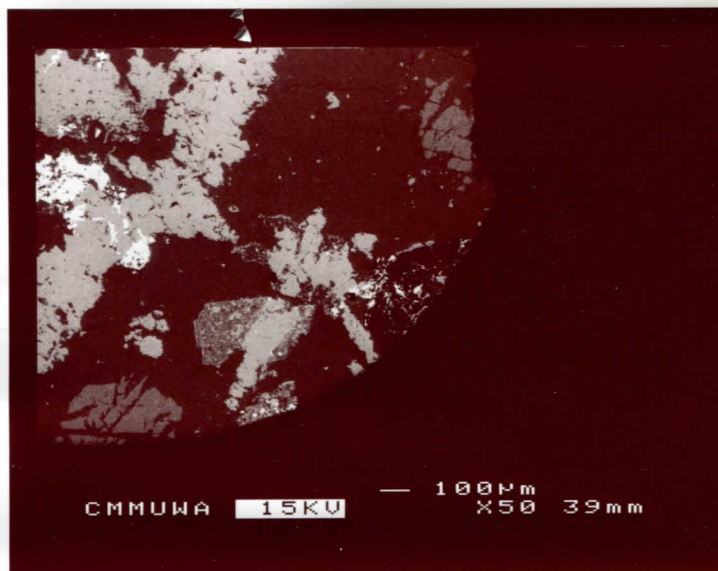
m13



m13

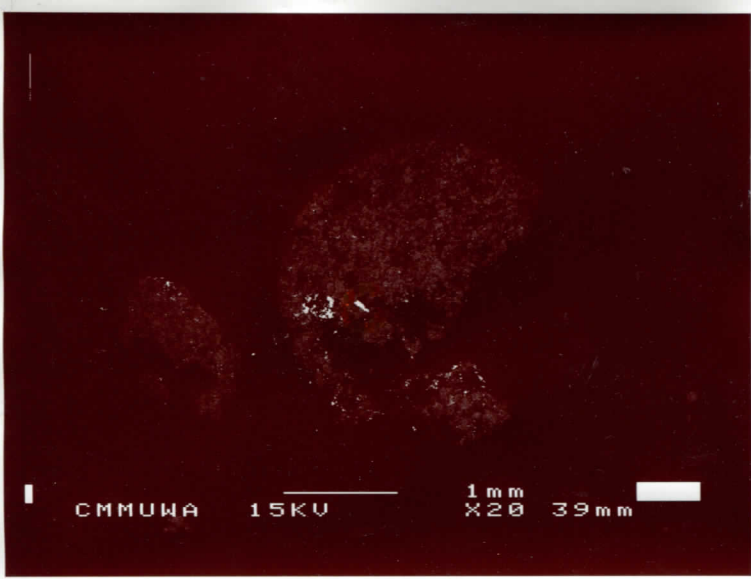


m13

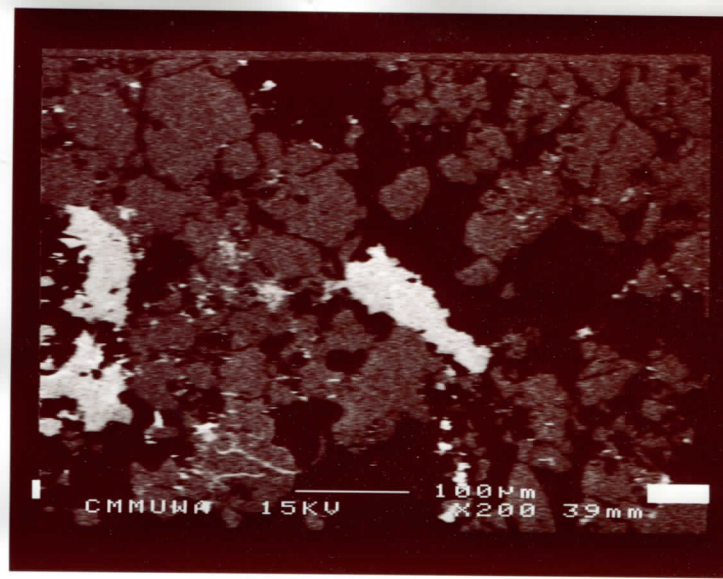


m13

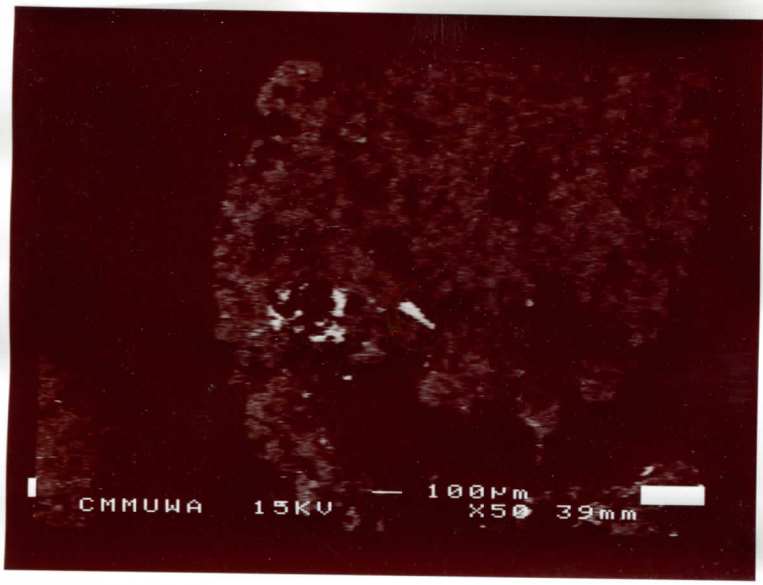




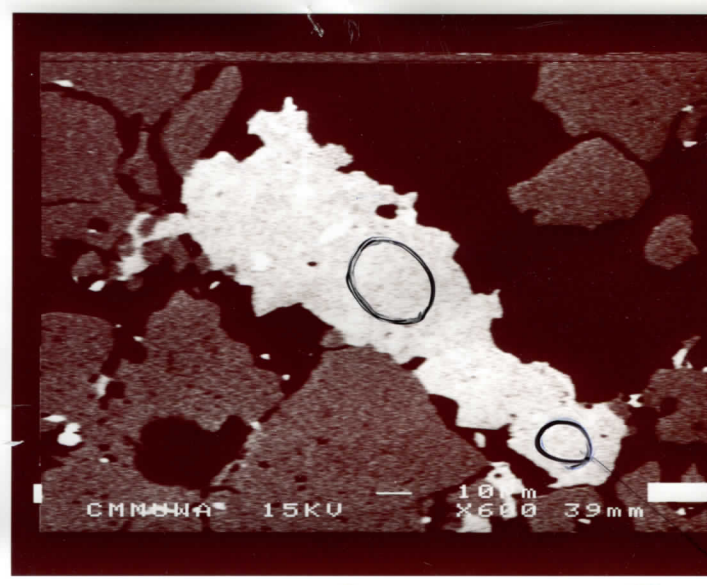
M14



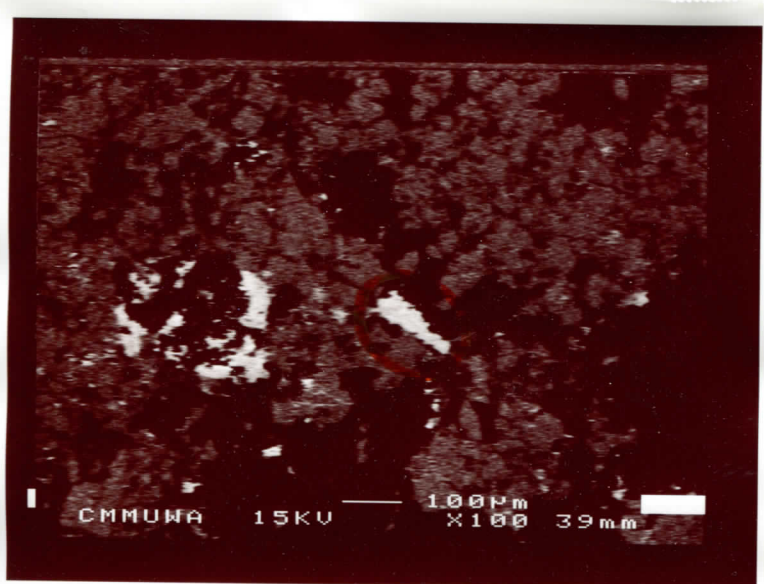
M14



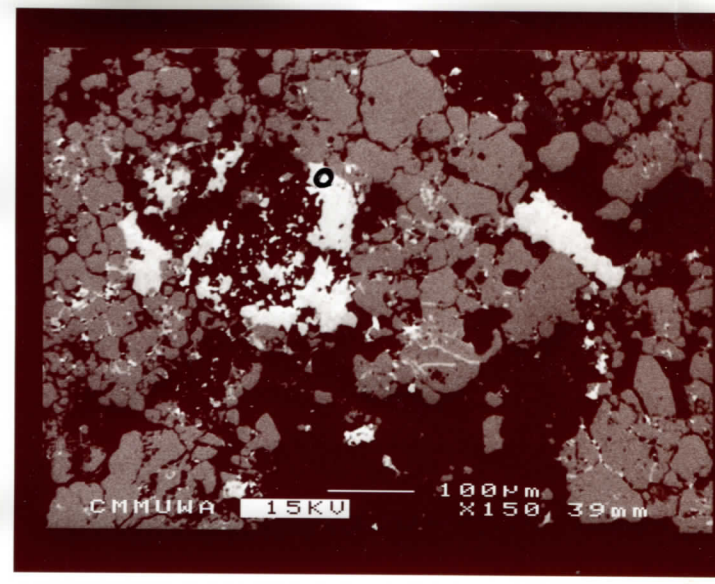
M14



M14 B X15-2 see m15

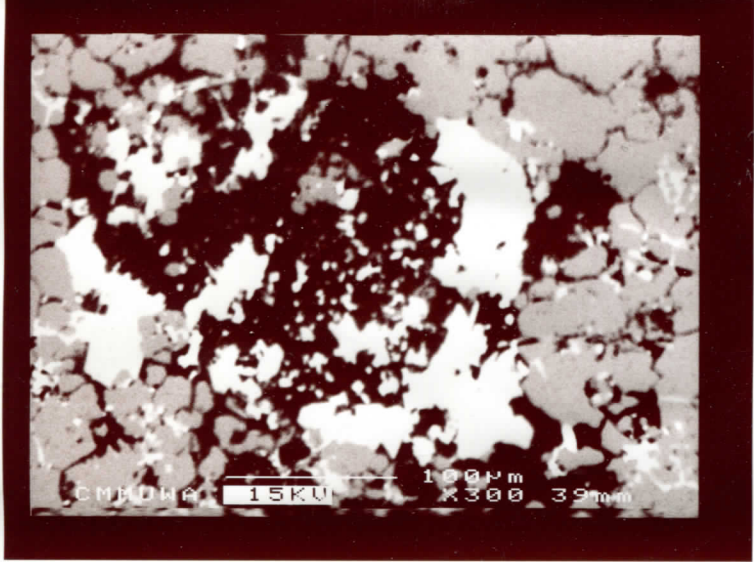


M14

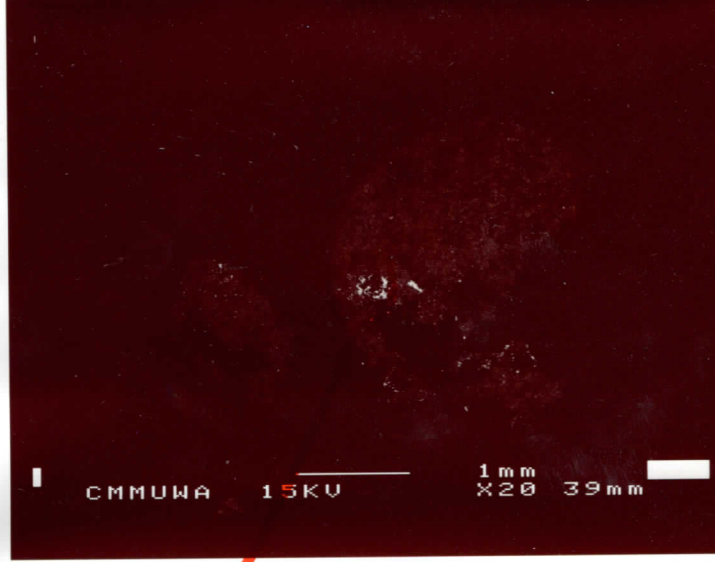


X15-1 M15

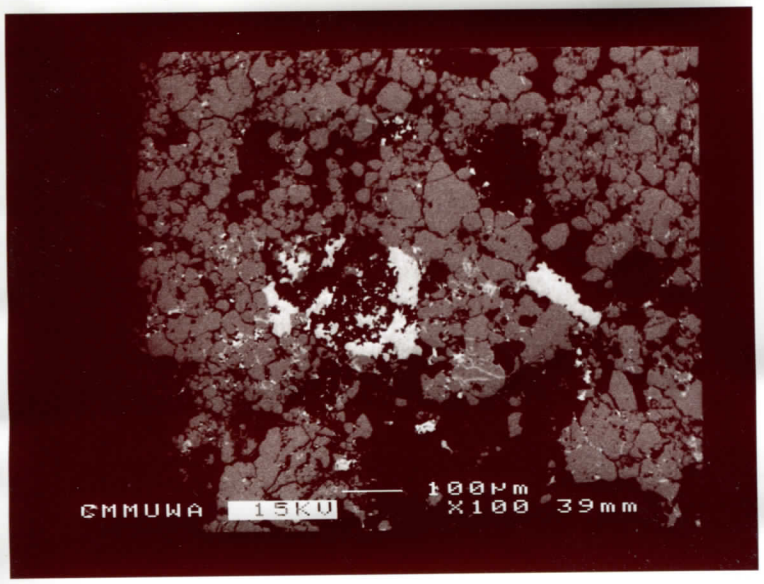




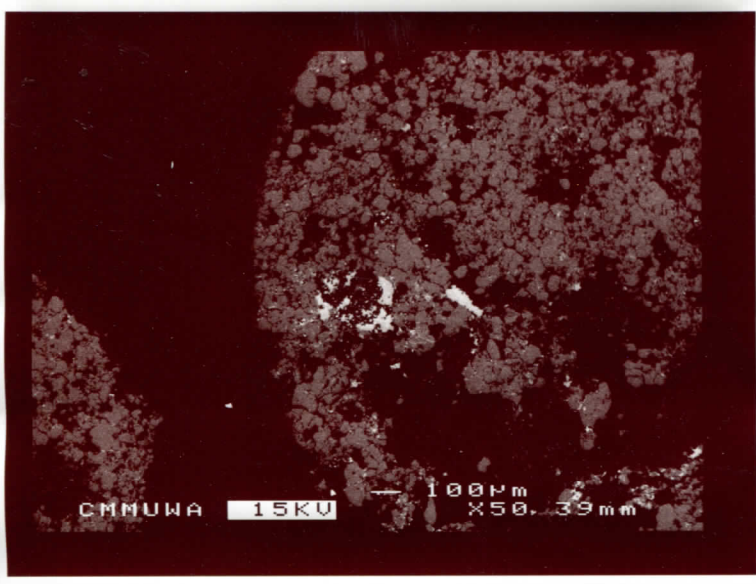
m15



m15



m15



m15